



DIGITAL LOG (785) 625-3858

Borehole Compensated  
Sonic Log

API No. 15-009-25,529-00-00

Company Reif Oil and Gas Company, LLC.  
Well Huslig No. 2  
Field Huslig  
County Barton State Kansas

Location NW SW SE  
930' FSL & 2,310' FEL

Sec: 13 Twp: 17 S Rge: 12 W

Other Services  
CNL/CDL  
MEL/DIL

Permanent Datum Ground Level Elevation 1830  
Log Measured From Kelly Bushing 7 Ft. Above Perm. Datum  
Drilling Measured From Kelly Bushing

K.B. 1837  
D.F. G.L. 1830

Date	3/23/2011	
Run Number	Two	
Type Log	BHC Sonic	
Depth Driller	3360	
Depth Logger	3363	
Bottom Logged Interval	3352	
Top Logged Interval	350	
Type Fluid In Hole	Chemical	
Salinity, PPM CL	7900	
Density	9.3	
Level	Full	
Max. Rec. Temp. F	110	
Operating Rig Time	5 Hours	
Equipment -- Location	10 Hays	
Recorded By	Jim Schuler	
Witnessed By	Jim Musgrove	Josh Austin
		Don Reif

Borehole Record				Casing Record			
Run No.	Bit	From	To	Size	Wgt.	From	To
1	12.25	00	366	8.625	24#	00	366
2	7.875	366	3360				

<<< Fold Here >>>

All interpretations are opinions based on inferences from electrical or other measurements and we cannot and do not guarantee the accuracy or correctness of any interpretation, and we shall not, except in the case of gross or willful negligence on our part, be liable or responsible for any loss, costs, damages, or expenses incurred or sustained by anyone resulting from any interpretation made by any of our officers, agents or employees. These interpretations are also subject to our general terms and conditions set out in our current Price Schedule.

Comments

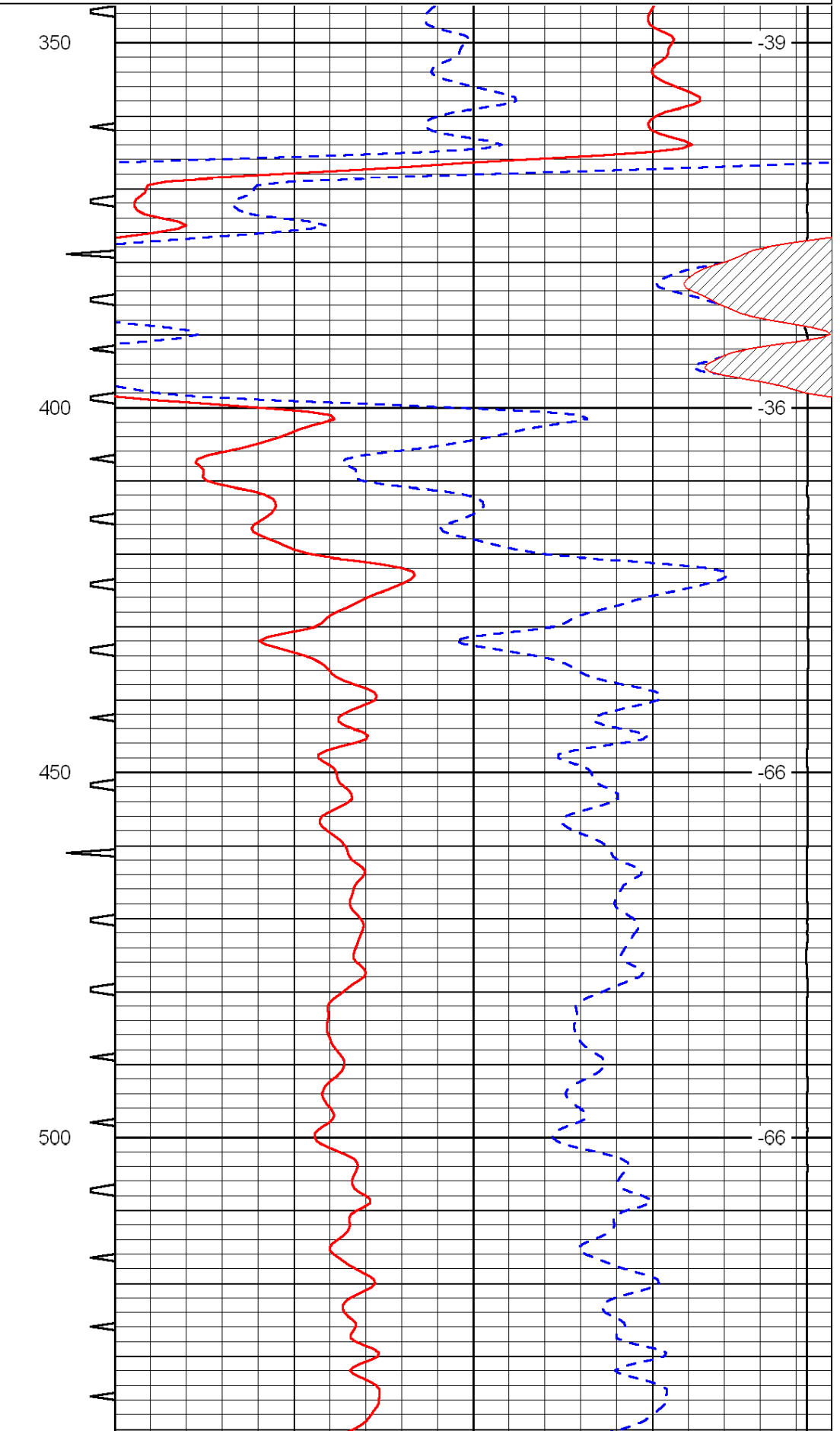
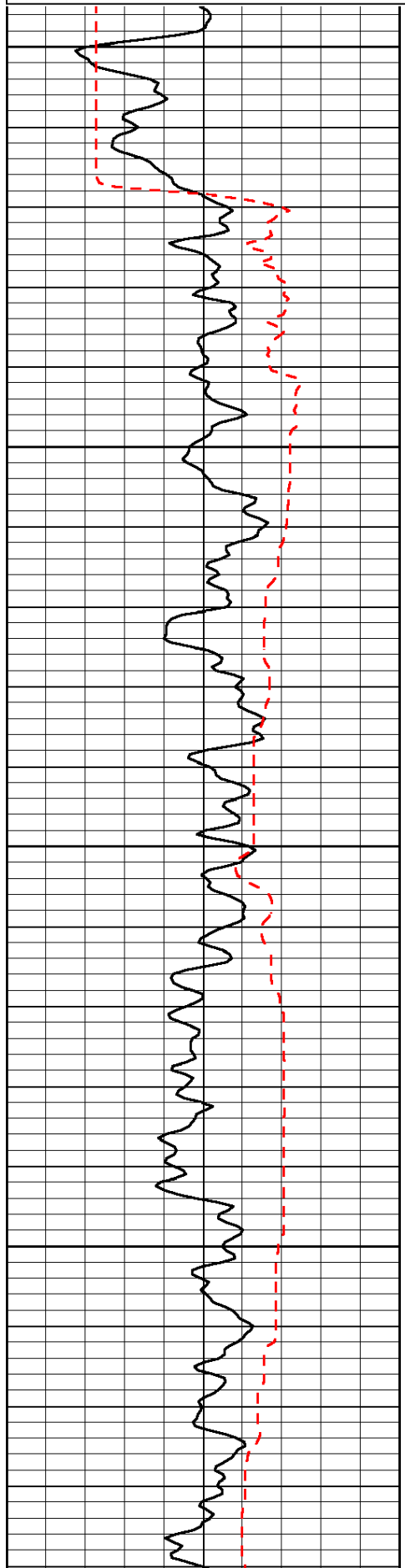
Thank you for using Log-Tech, Inc.  
(785) 625-3858

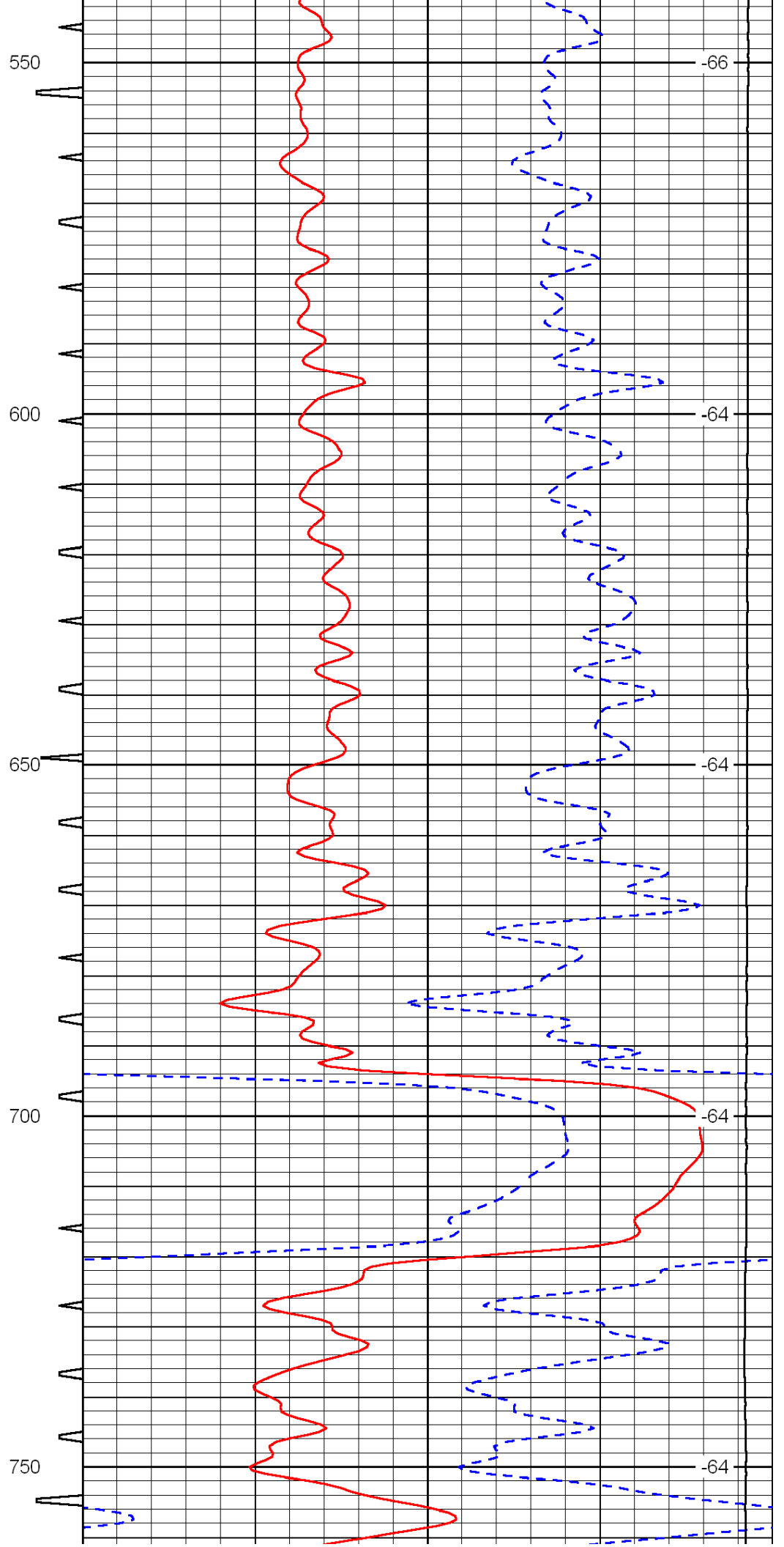
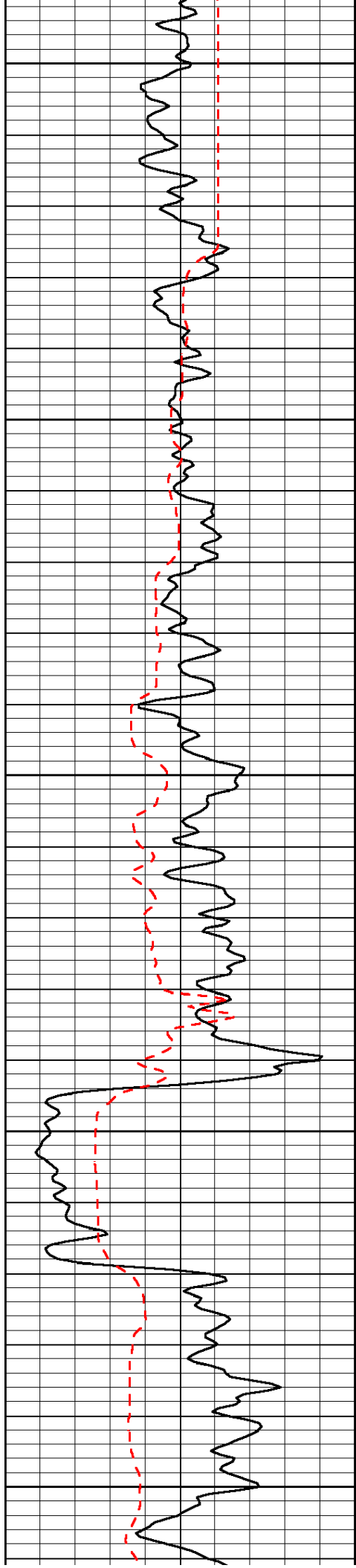
Odin, Kansas, 1/2 East, North Into

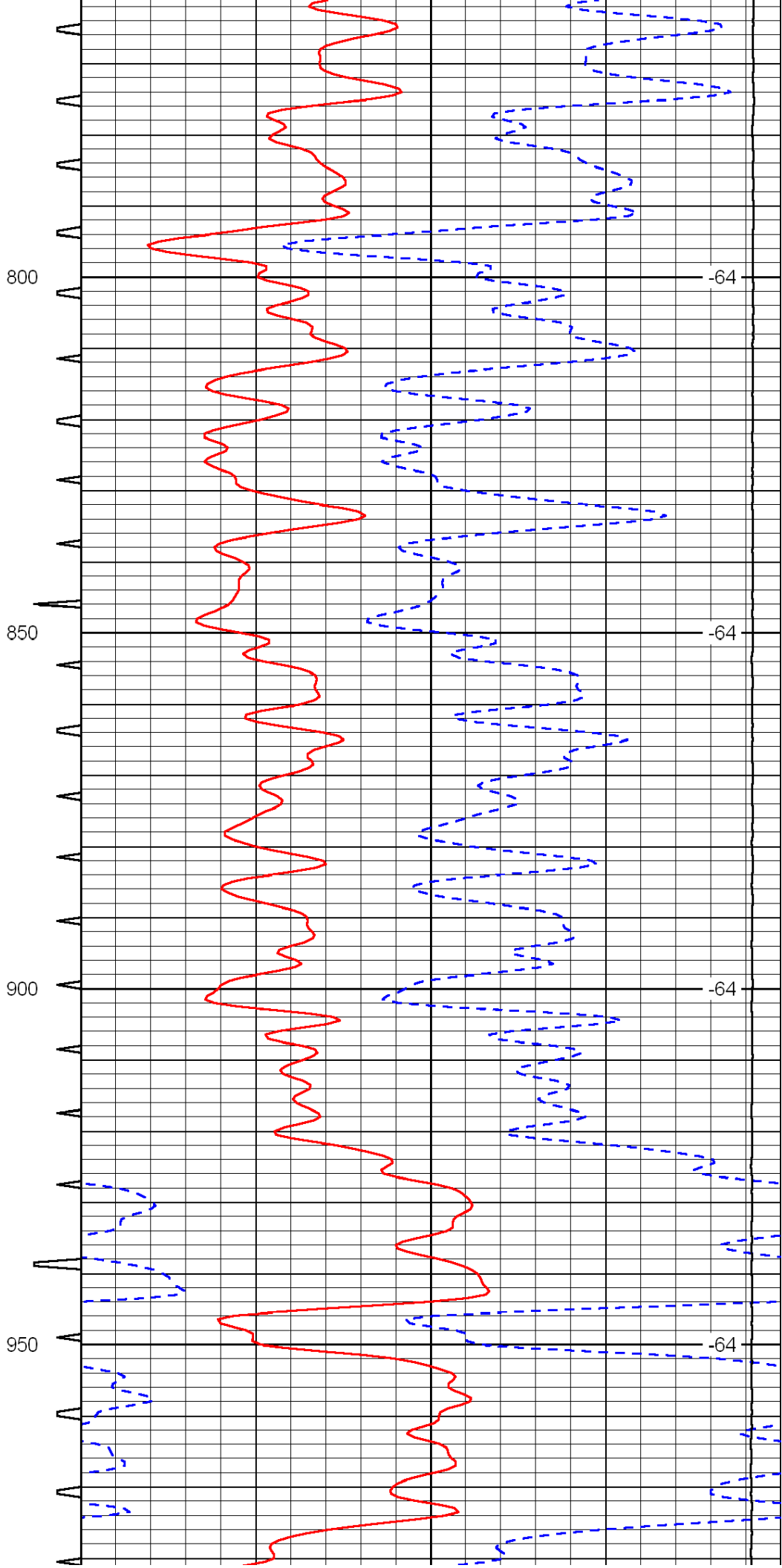
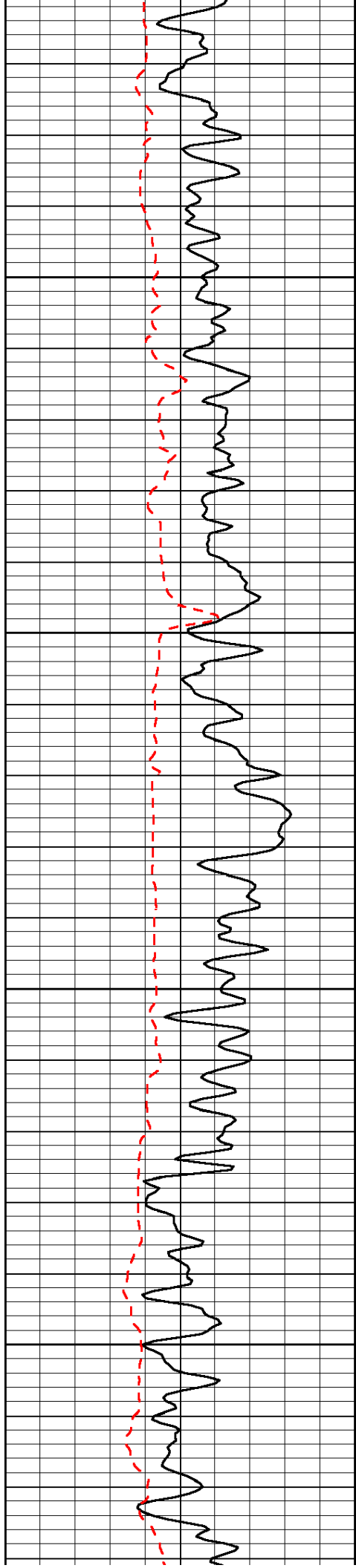
Database File: c:\warrior\data\reif\_huslig no. 2\reif\_huslig\_2hd.db  
 Dataset Pathname: DIL/reistk3  
 Presentation Format: sonic  
 Dataset Creation: Wed Mar 23 16:45:31 2011  
 Charted by: Depth in Feet scaled 1:240

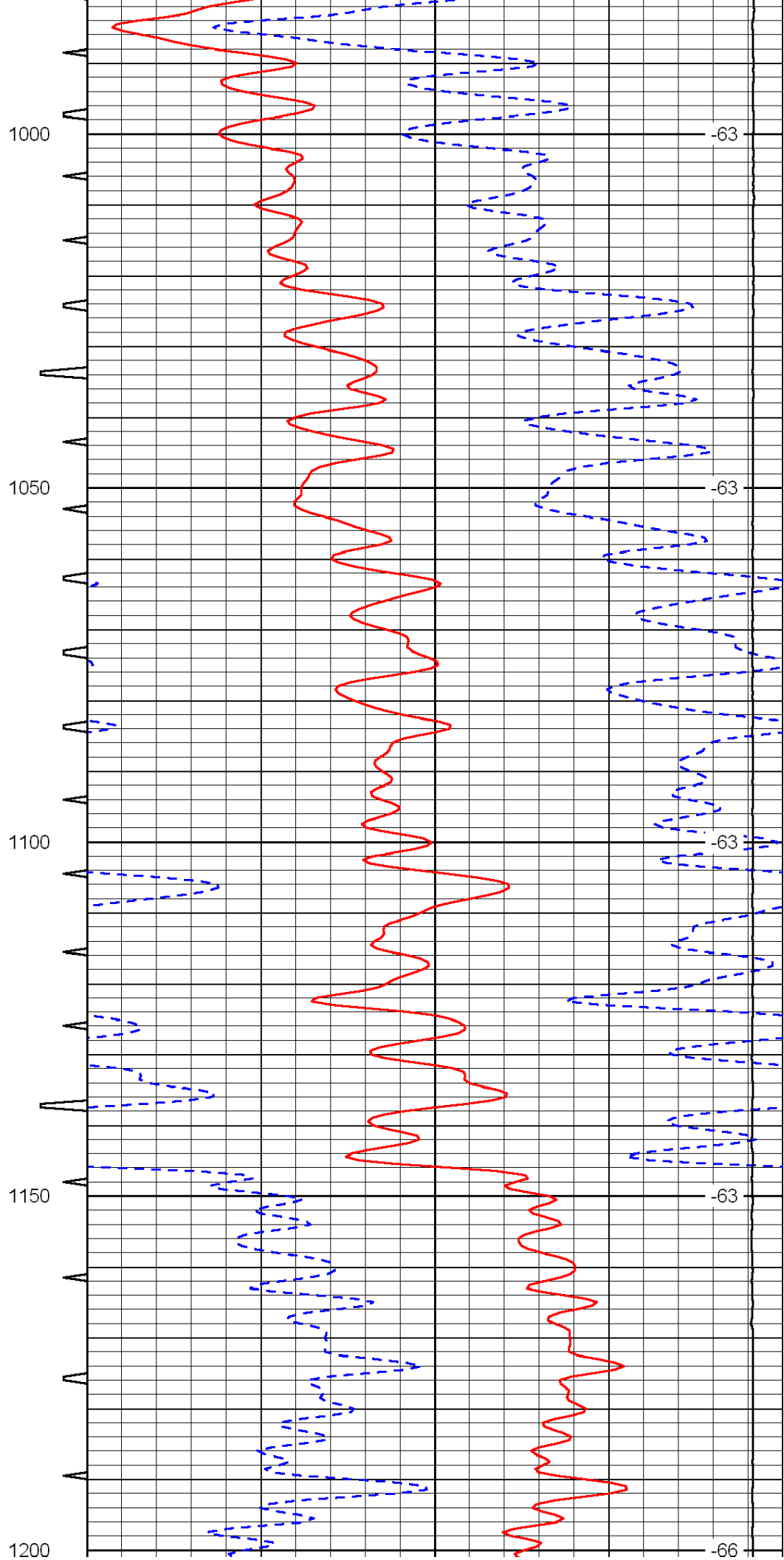
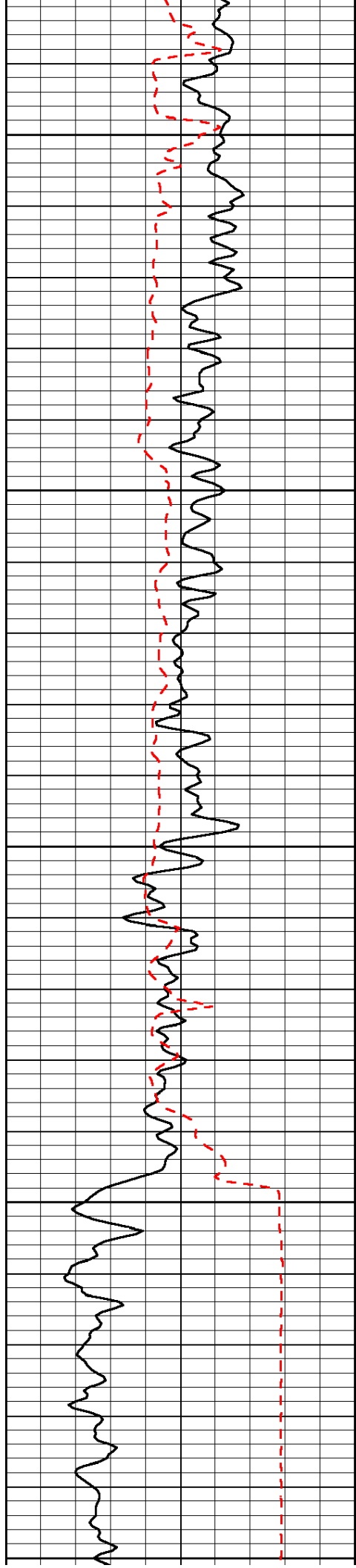
0	Gamma Ray	150	Sonic Int	140	Delta Time (usec/ft)	40
150	Gamma Ray	300	5	0	SPOR	-10
6	Caliper (GAPI)	16		15000	LTEN (lb)	0

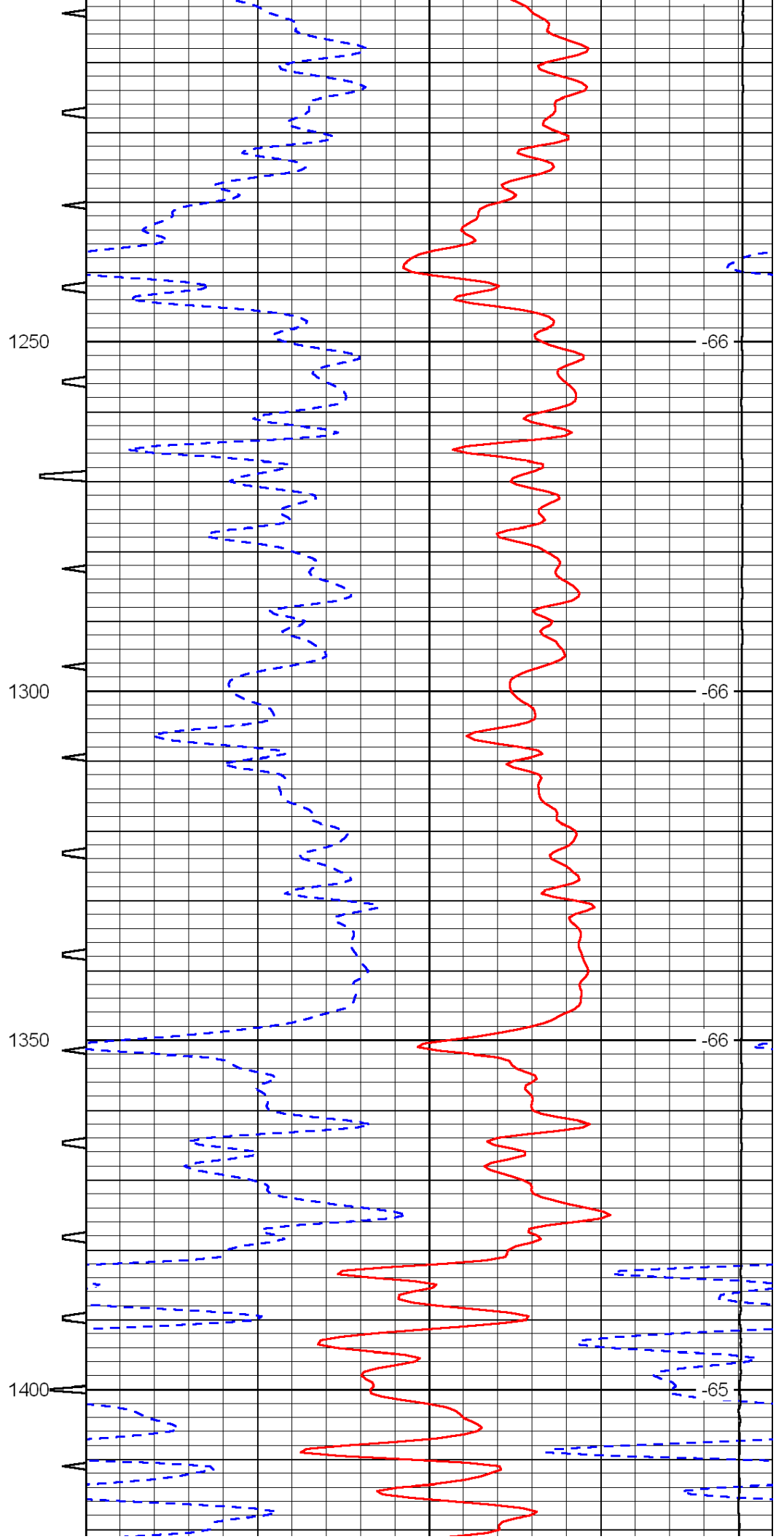
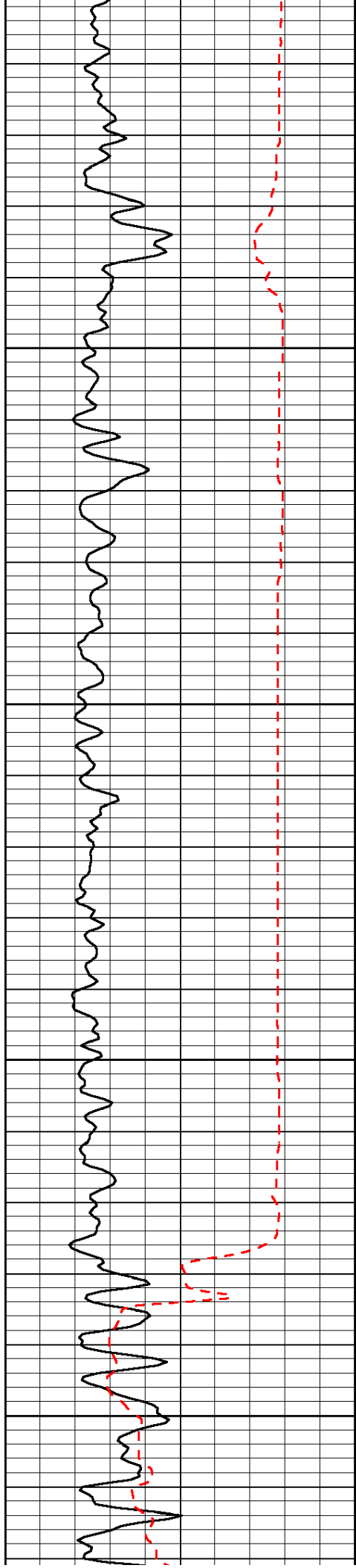
LSPD

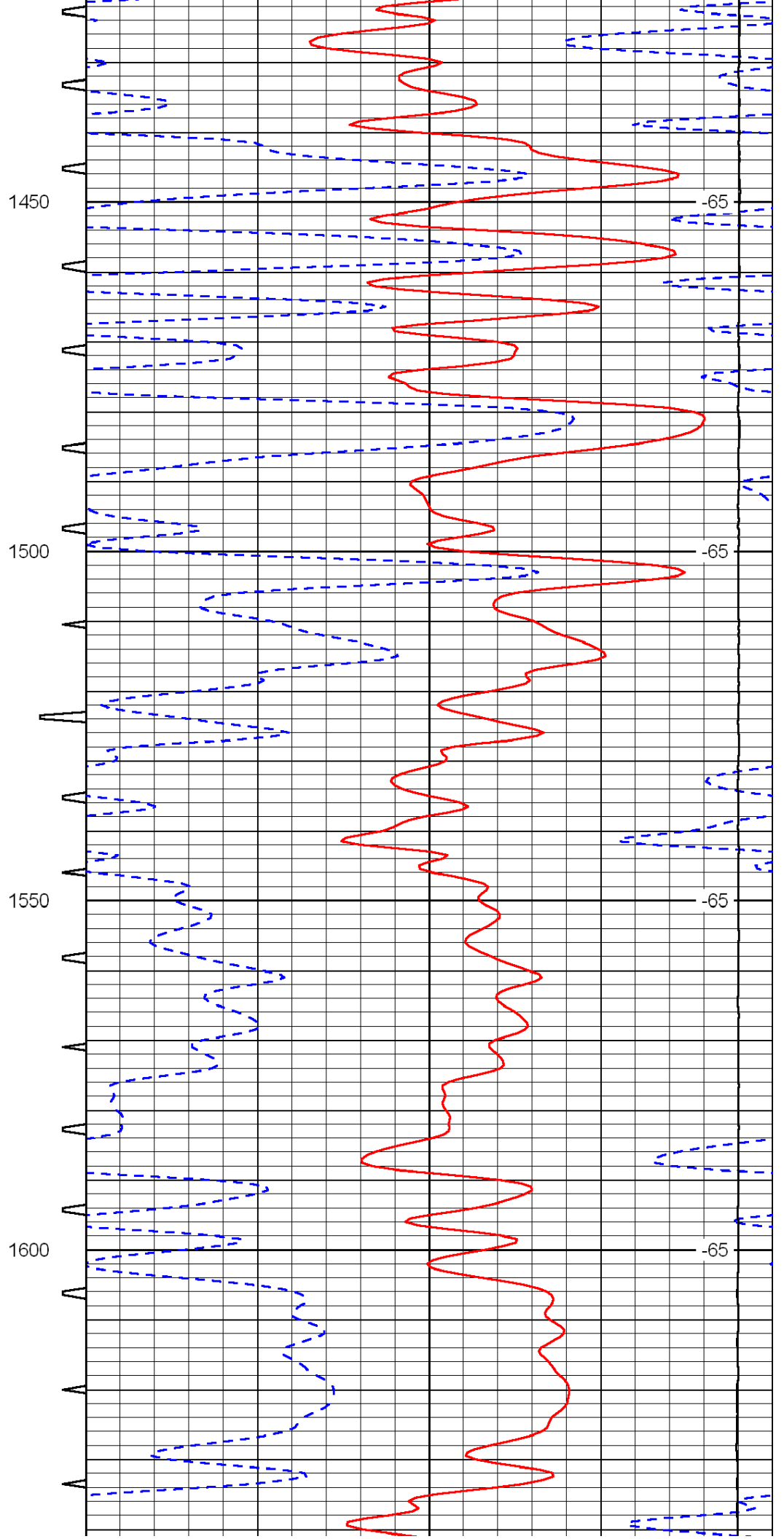
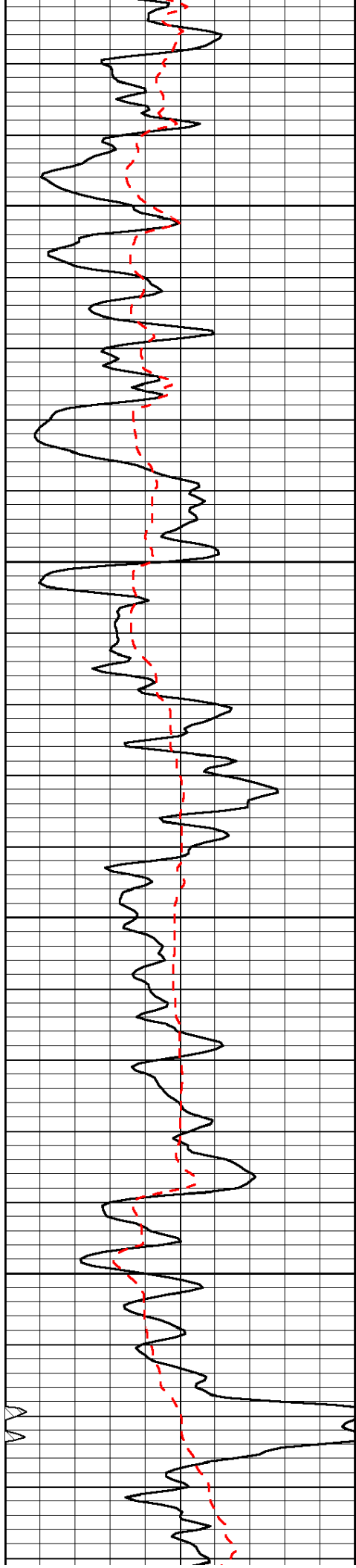


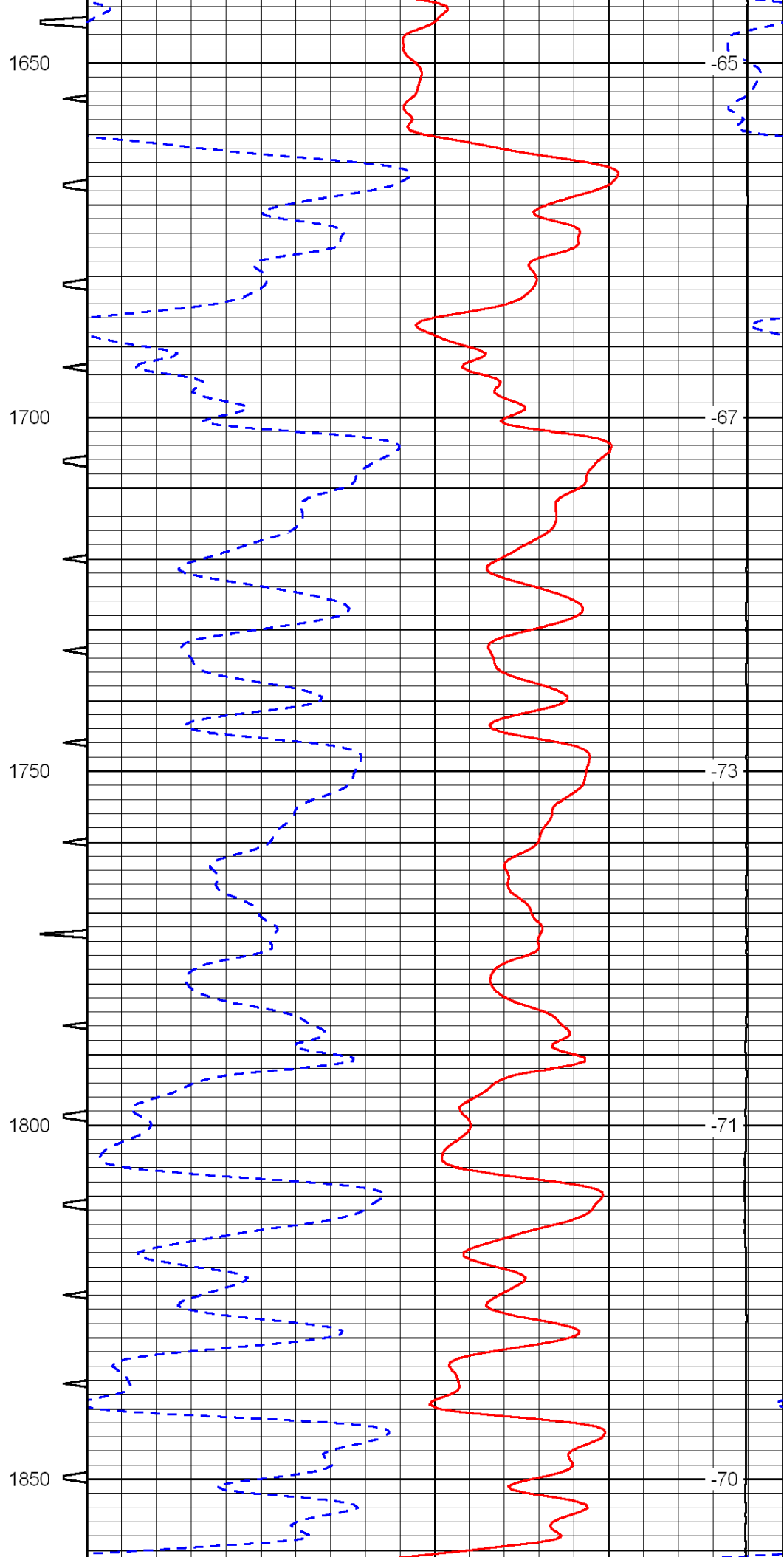
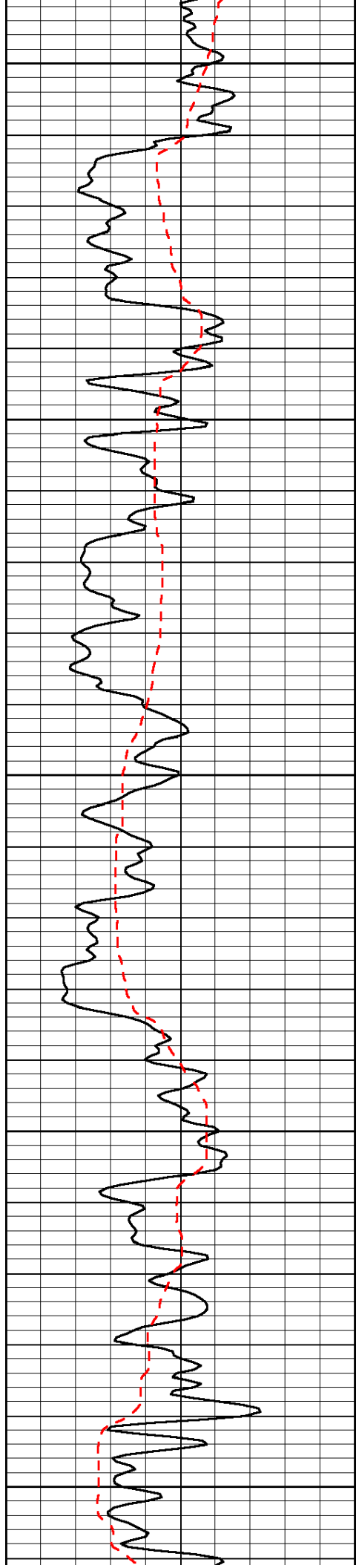


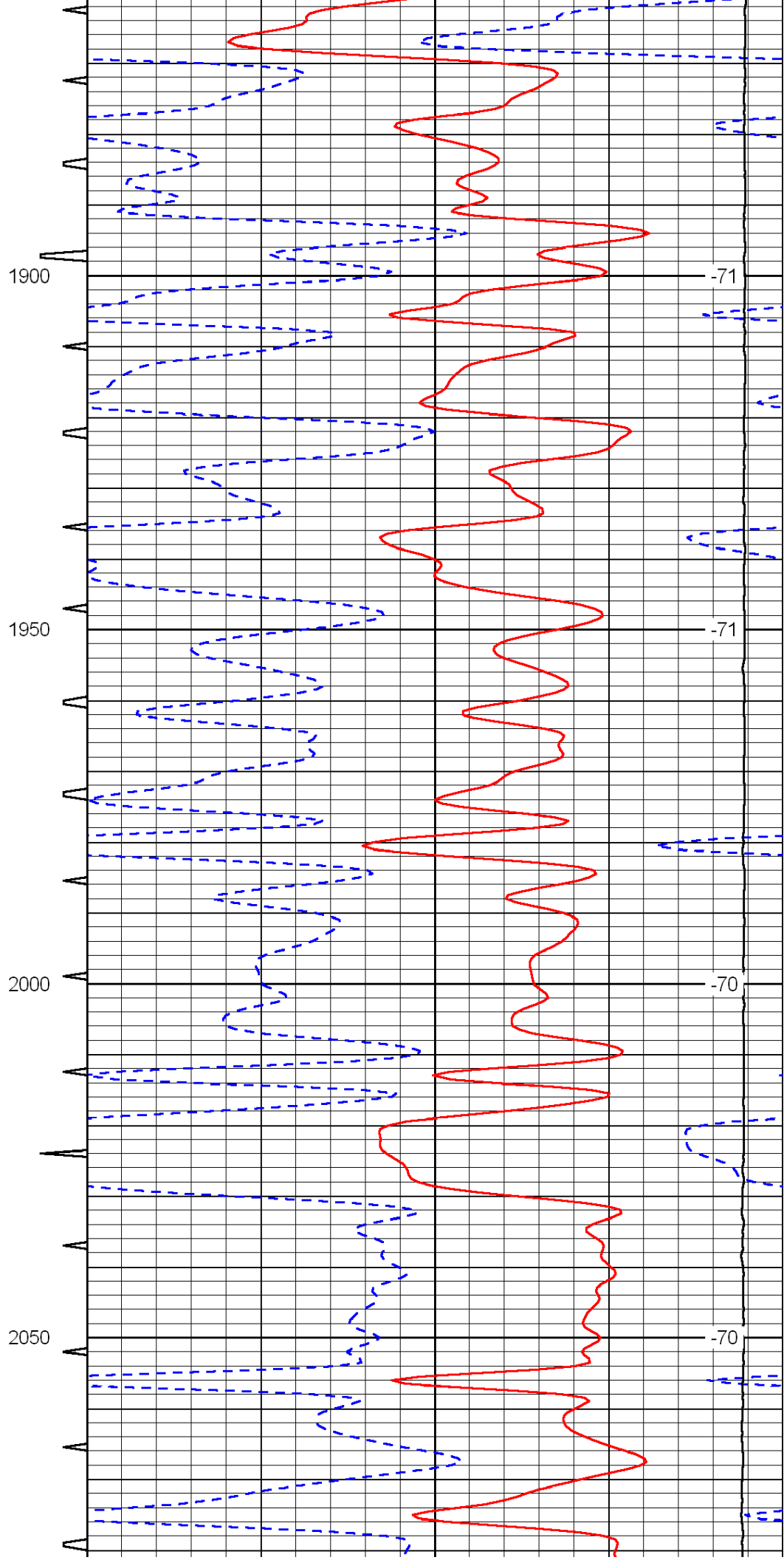
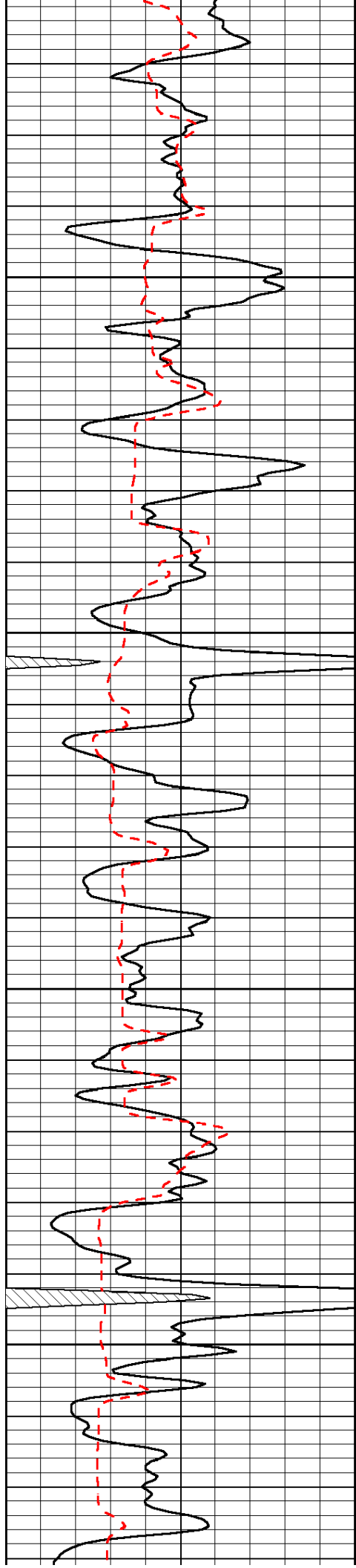


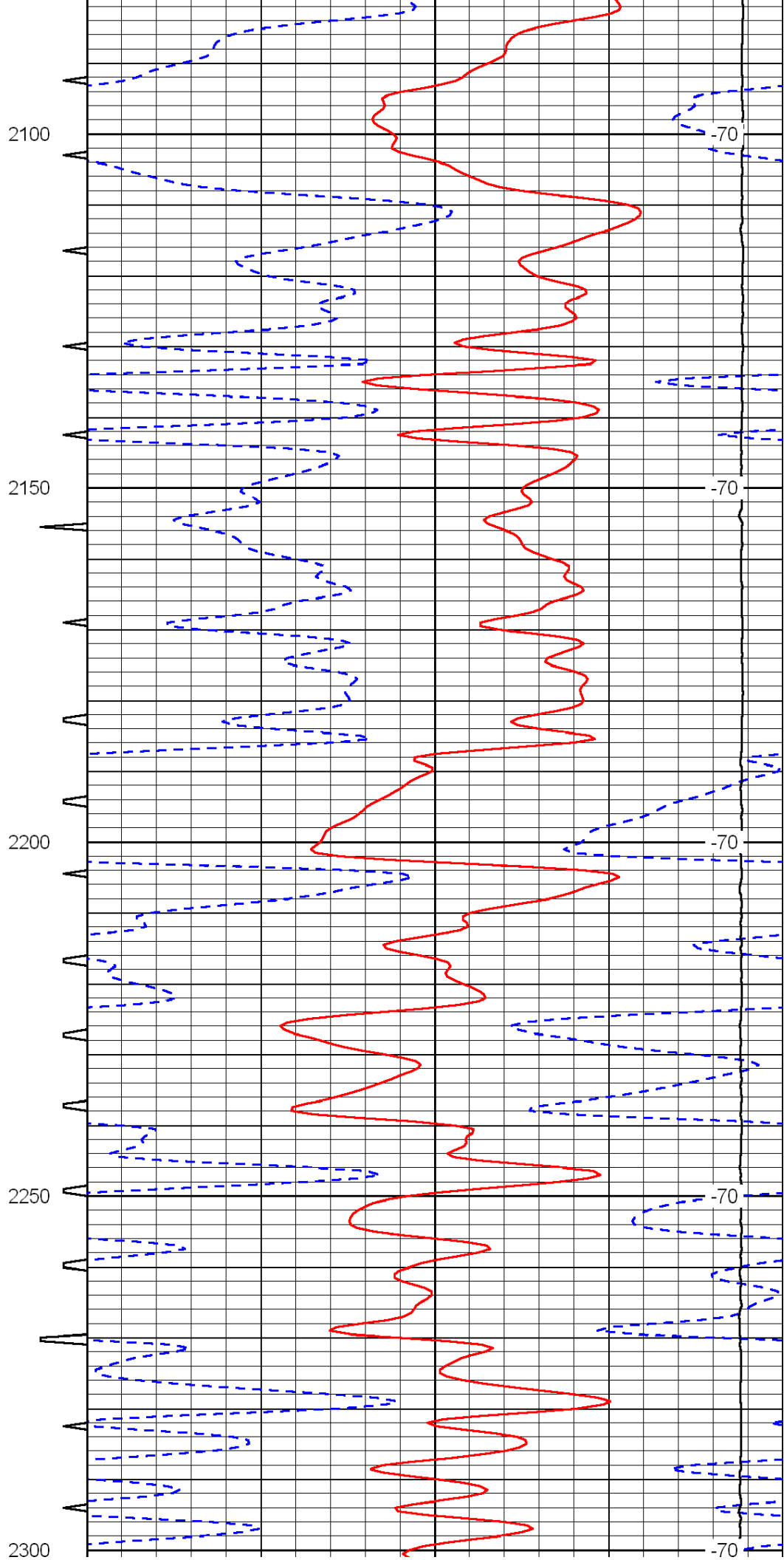
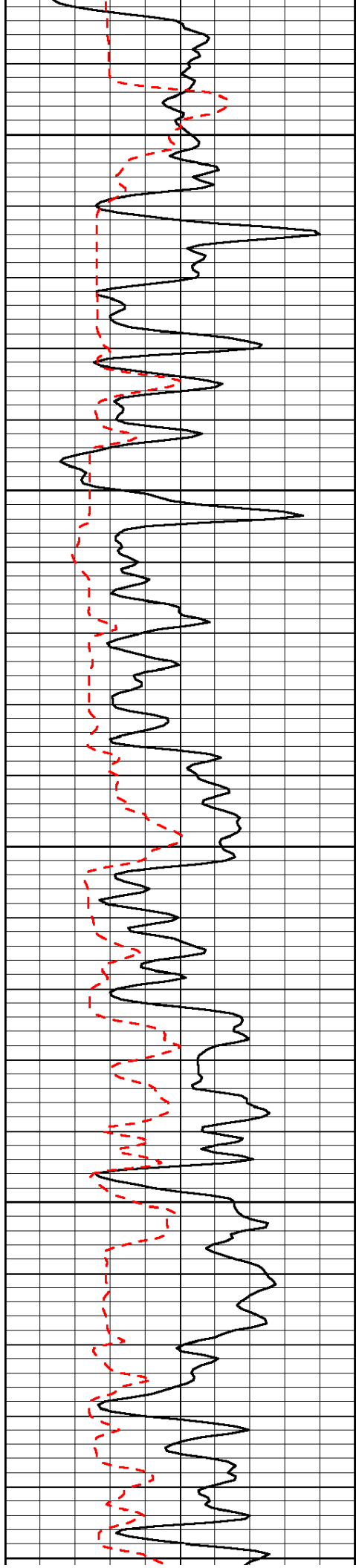


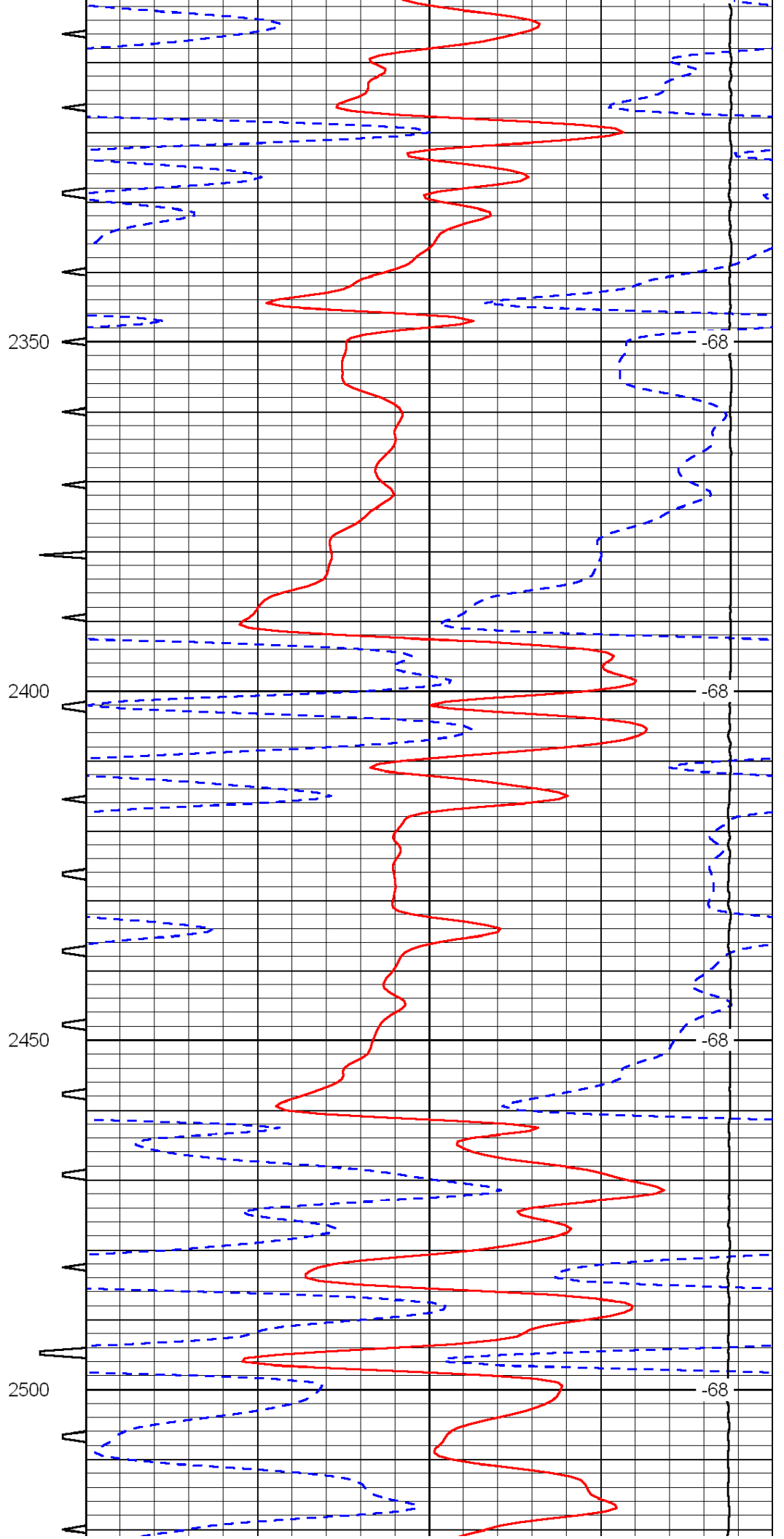
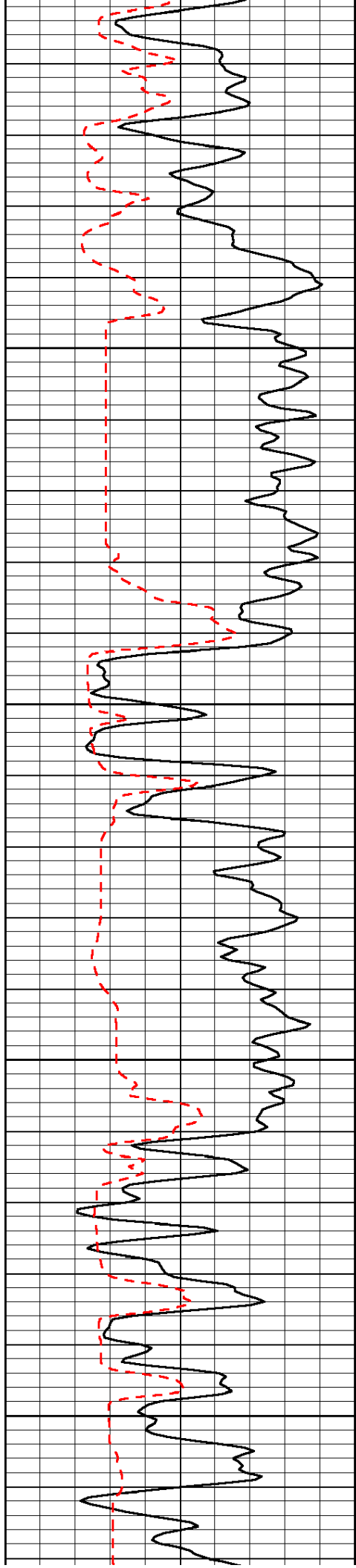


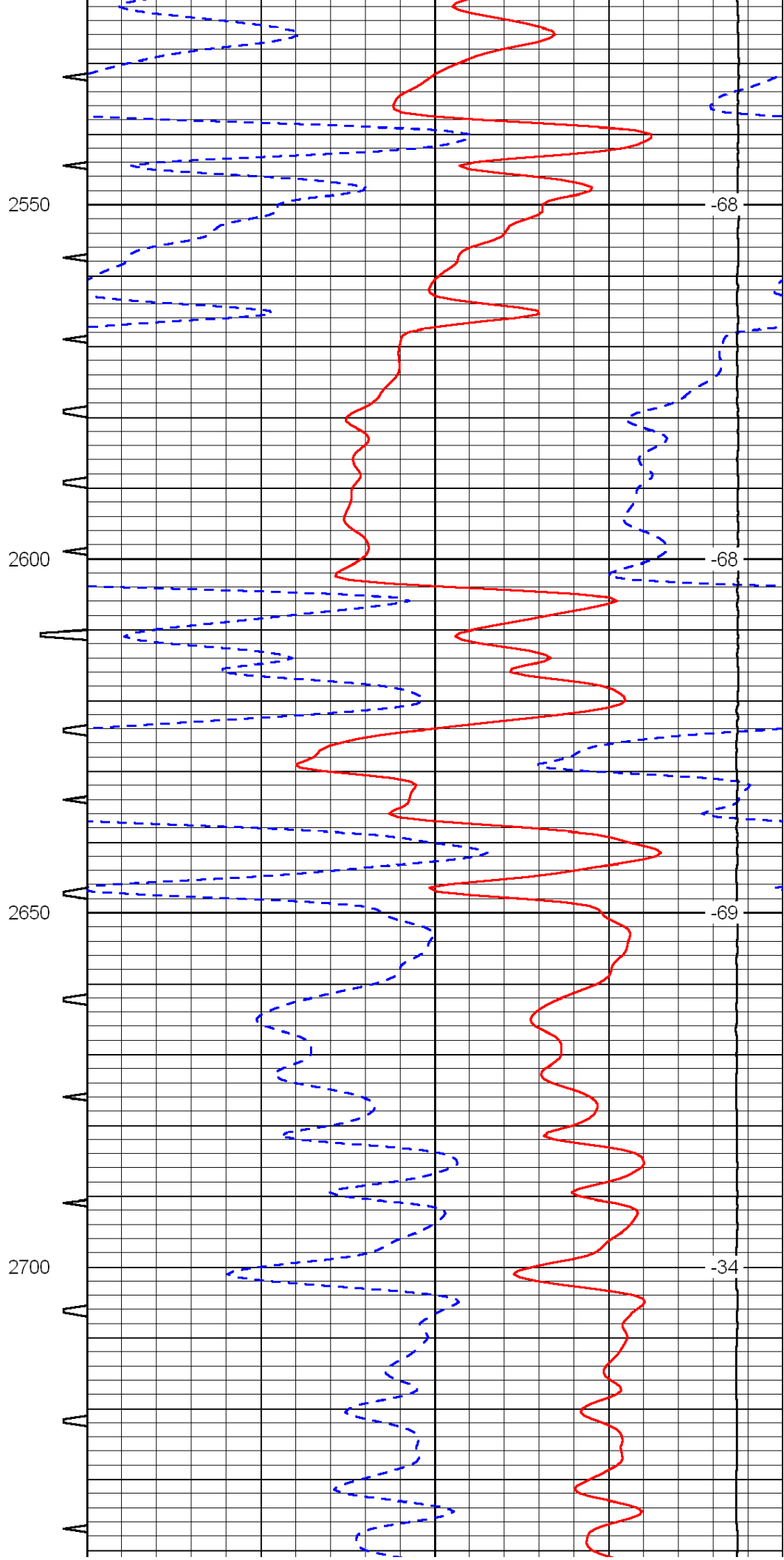
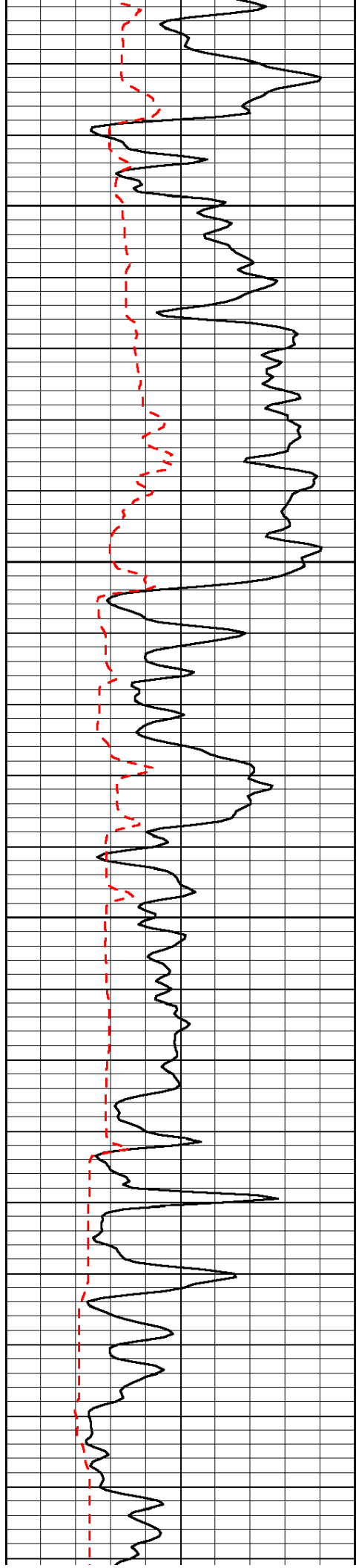


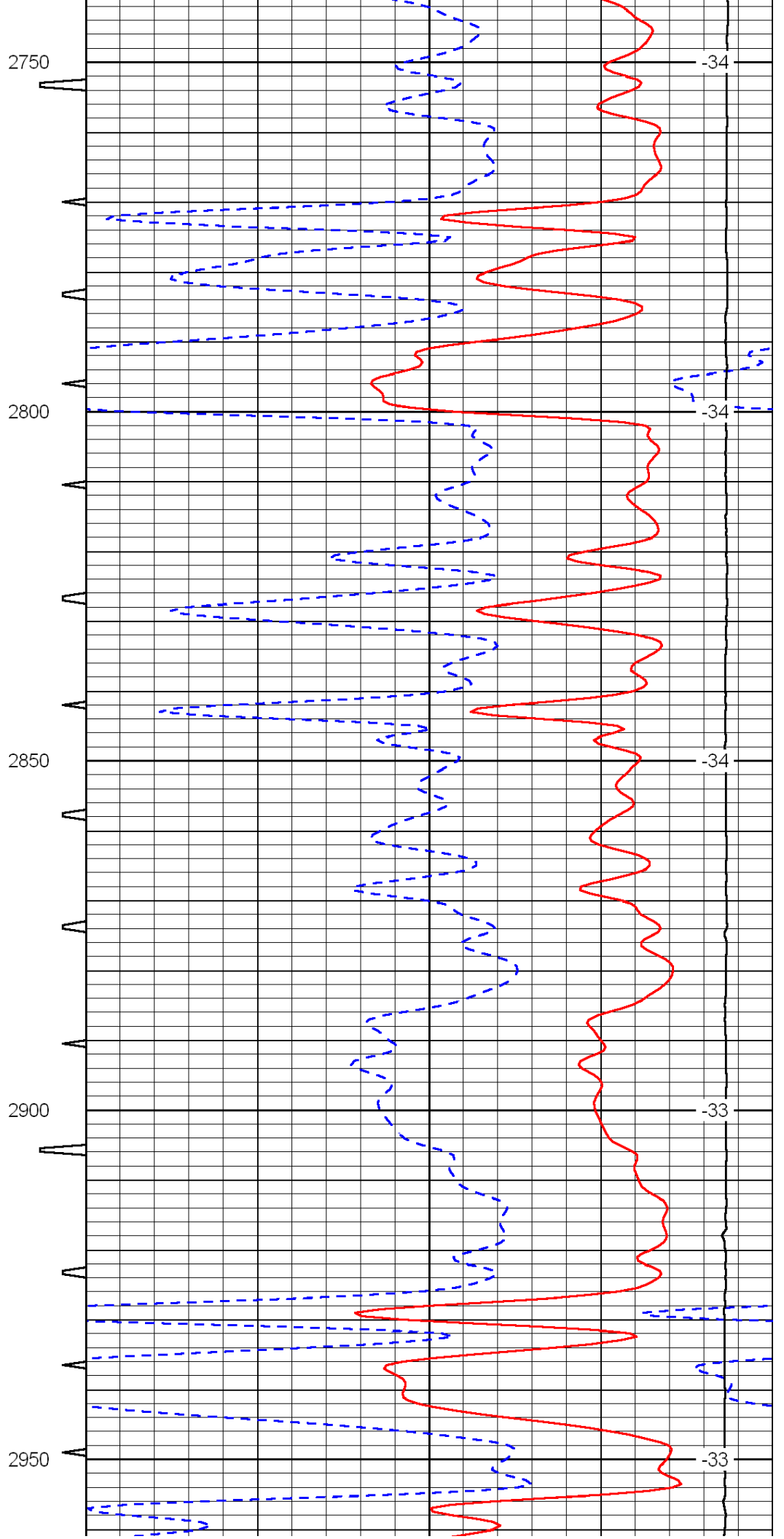
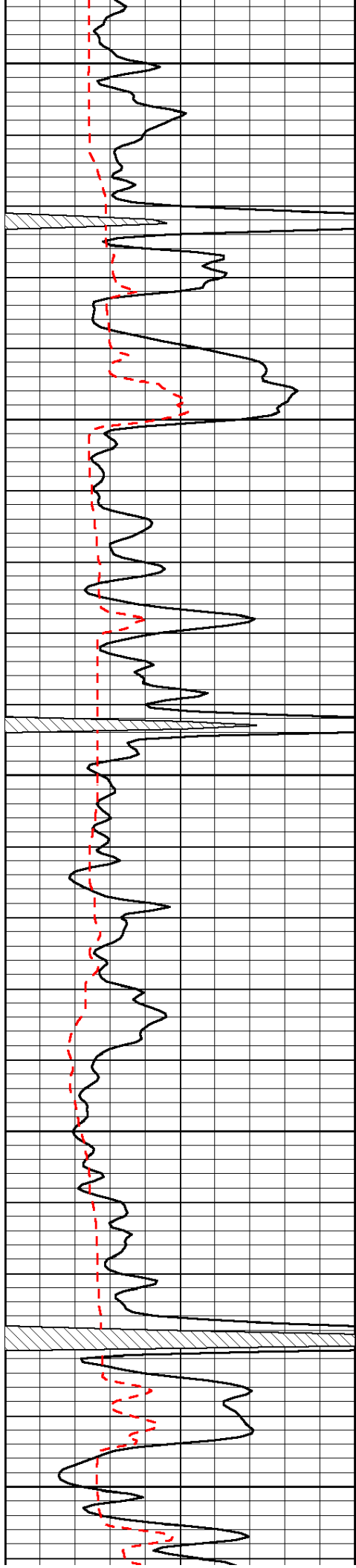


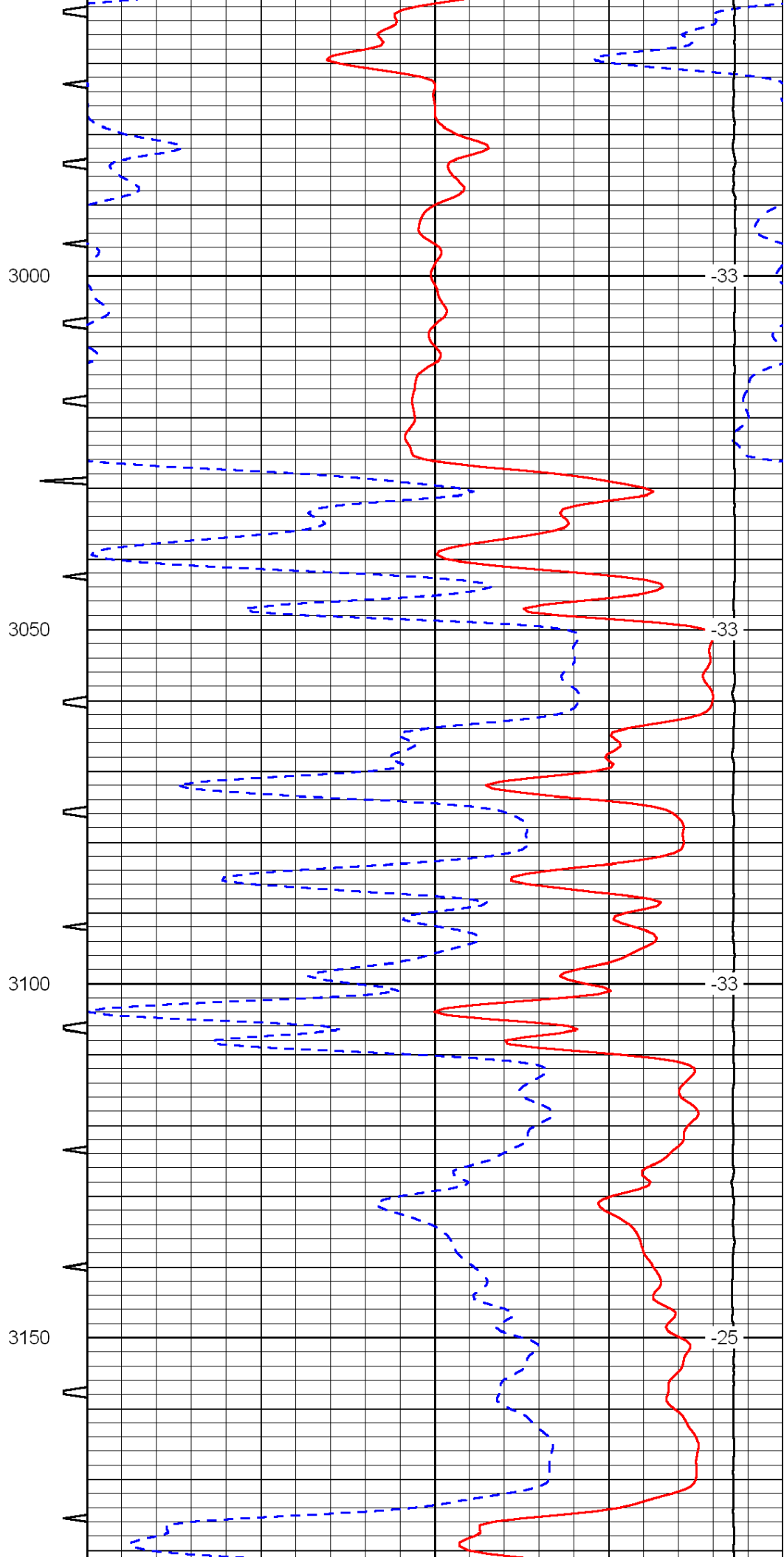
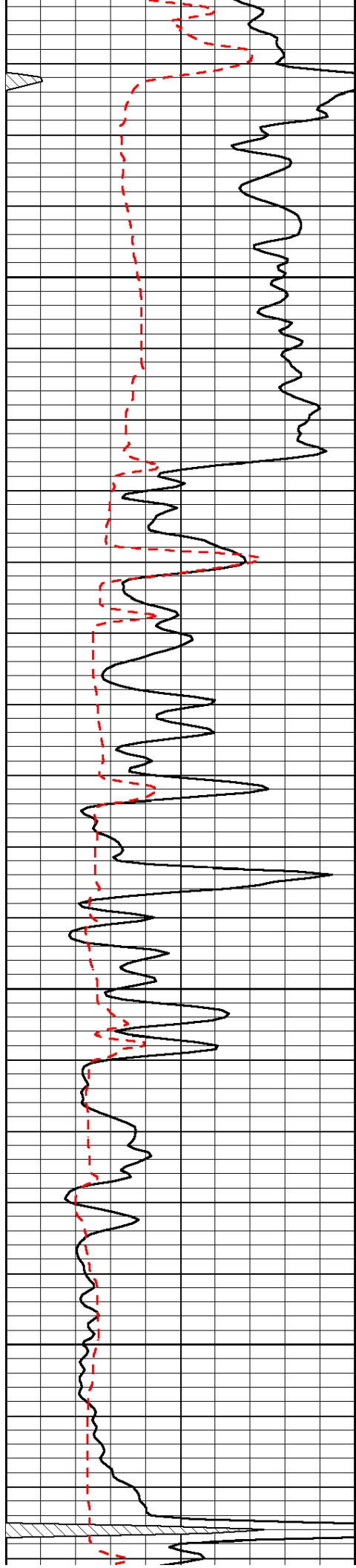


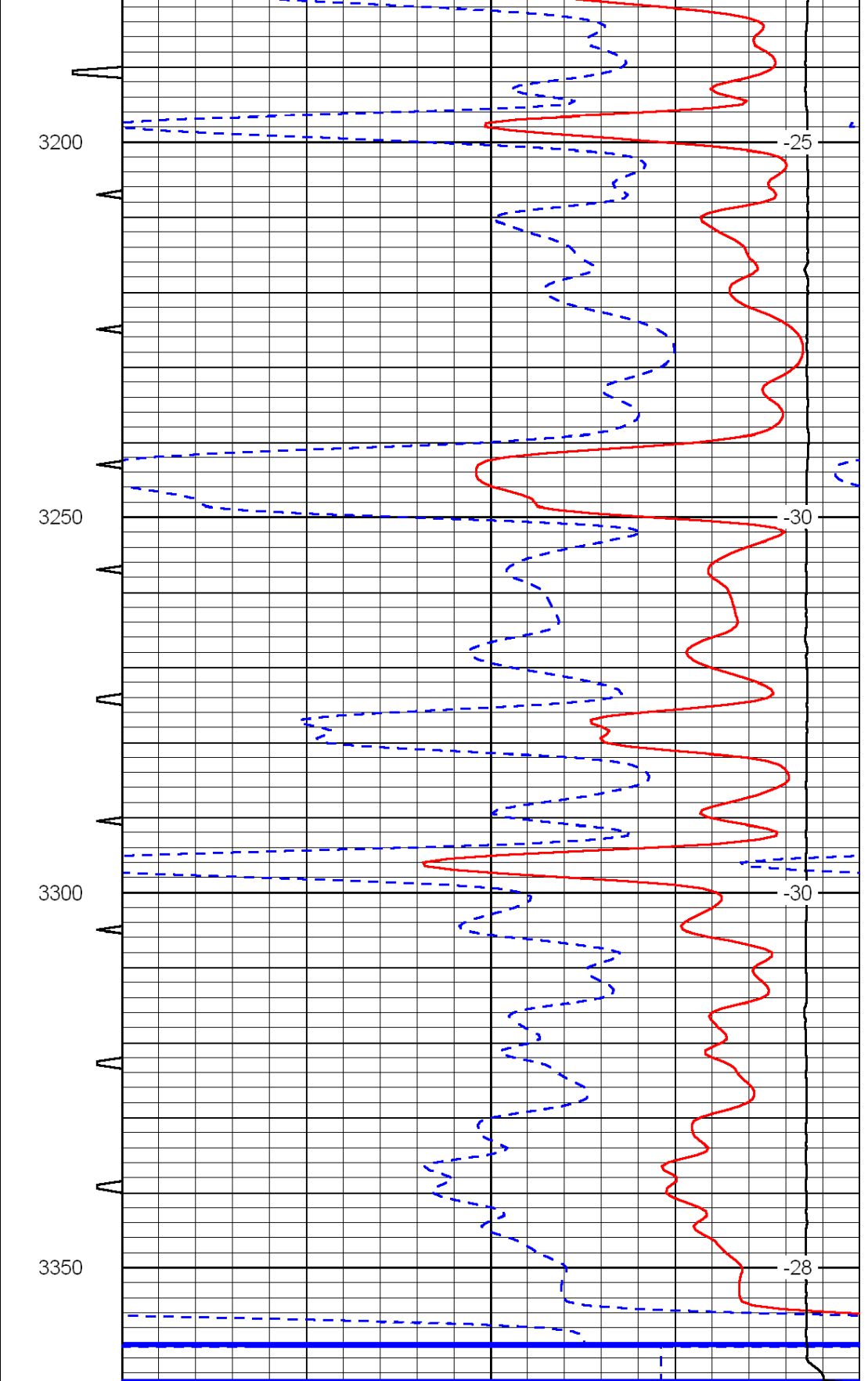
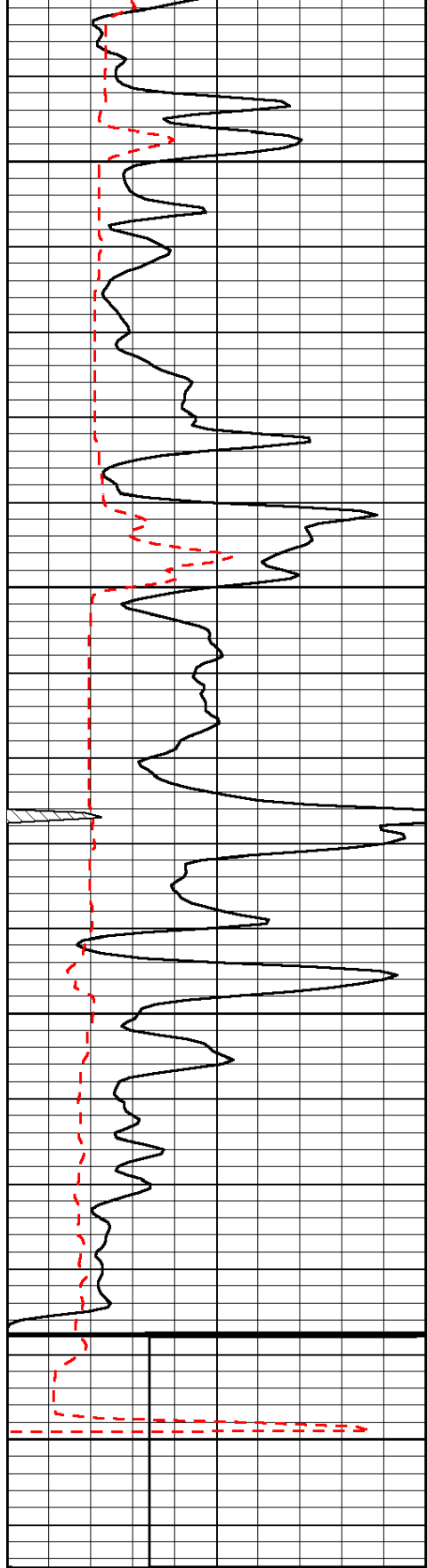












0	Gamma Ray	150	Sonic Int	140	Delta Time (usec/ft)	40
150	Gamma Ray	300	5	0	SPOR	-10
6	Caliper (GAPI)	16		15000	LTEN (lb)	0
LSPD						