



Microresistivity Log

DIGITAL LOG (785) 625-3858

API No.	15-009-25,529-00-00		
Company	Reif Oil and Gas Company, LLC.		
Well	Huslig No. 2		
Field	Huslig		
County	Barton	State	Kansas
Location	NW SW SE 930' FSL & 2,310' FEL		
Sec: 13	Twp: 17 S	Rge: 12 W	Other Services CNL/CDL DIL/BHCS
Permanent Datum	Ground Level	Elevation	Elevation
Log Measured From	Kelly Bushing	1830	K.B. 1837
Drilling Measured From	Kelly Bushing	7 Ft. Above Perm. Datum	D.F. 1830
			G.L. 1830

Date	3/23/2011	
Run Number	Two	
Depth Driller	3360	
Depth Logger	3363	
Bottom Logged Interval	3362	
Top Log Interval	2700	
Casing Driller	8.625 @ 366	
Casing Logger	367	
Bit Size	8.625	
Type Fluid in Hole	Chemical	
Salinity, ppm CL	7900	
Density / Viscosity	9.3	50
pH / Fluid Loss	10.5	9.2
Source of Sample	Flowline	
Rm @ Meas. Temp	.54	@ 69
Rmf @ Meas. Temp	.41	@ 69
Rmc @ Meas. Temp	.73	@ 69
Source of Rmf / Rmc	Charts	
Rm @ BHT	.34	@ 110
Operating Rig Time	5 Hours	
Max Rec. Temp. F	110	
Equipment Number	10	
Location	Hays	
Recorded By	Jim Schuler	
Witnessed By	Jim Musgrave	Josh Austin
		Don Reif

<<< Fold Here >>>

All interpretations are opinions based on inferences from electrical or other measurements and we cannot and do not guarantee the accuracy or correctness of any interpretation, and we shall not, except in the case of gross or willful negligence on our part, be liable or responsible for any loss, costs, damages, or expenses incurred or sustained by anyone resulting from any interpretation made by any of our officers, agents or employees. These interpretations are also subject to our general terms and conditions set out in our current Price Schedule.

Comments

Thank you for using Log-Tech, Inc.
(785) 625-3858

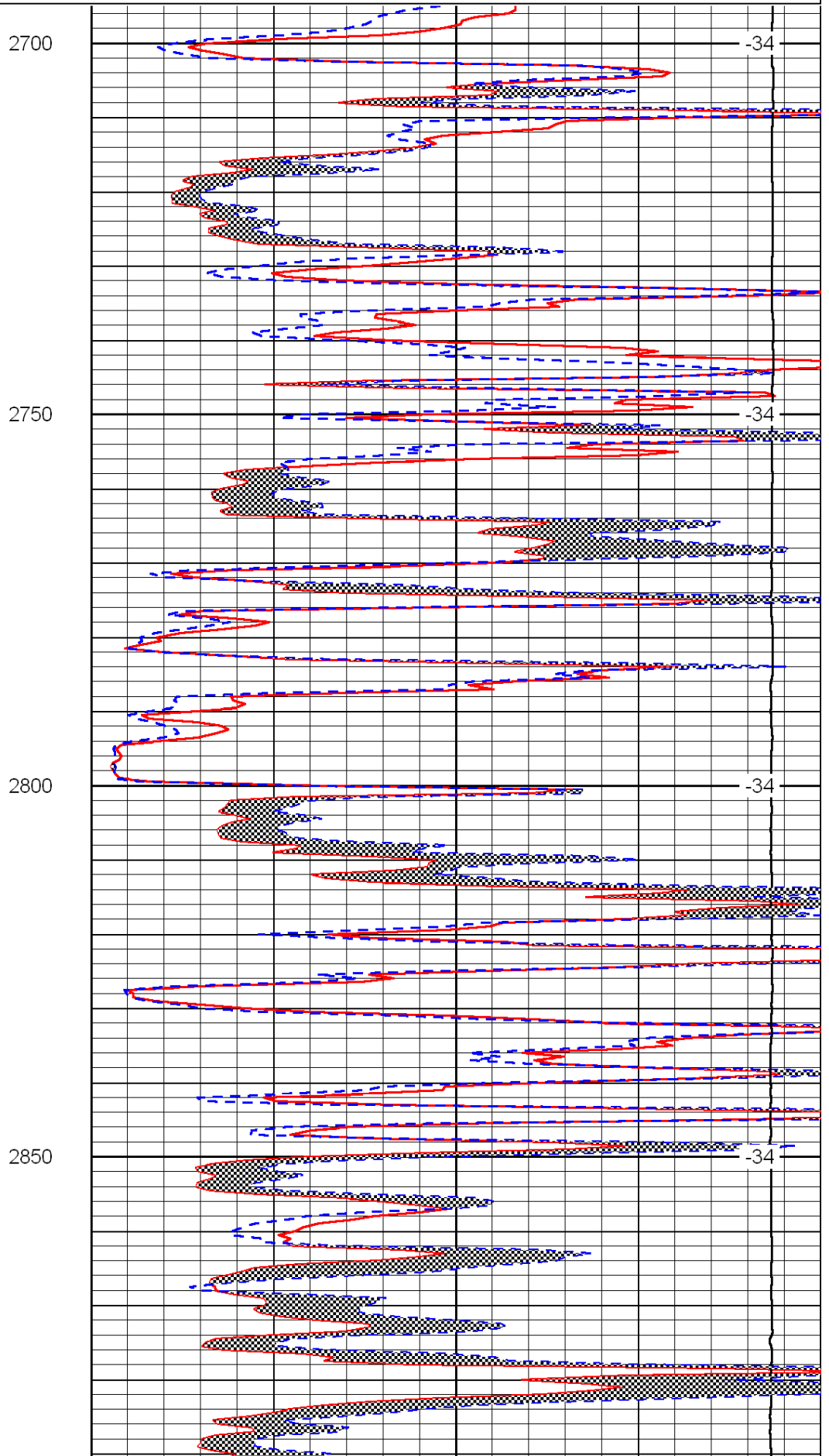
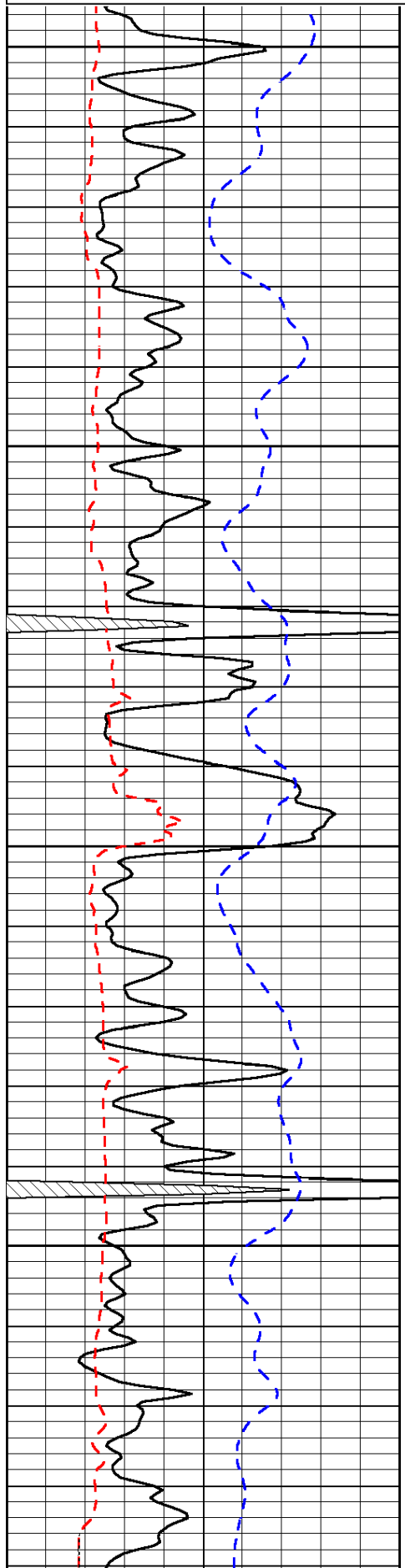
Odin, Kansas, 1/2 East, North Into

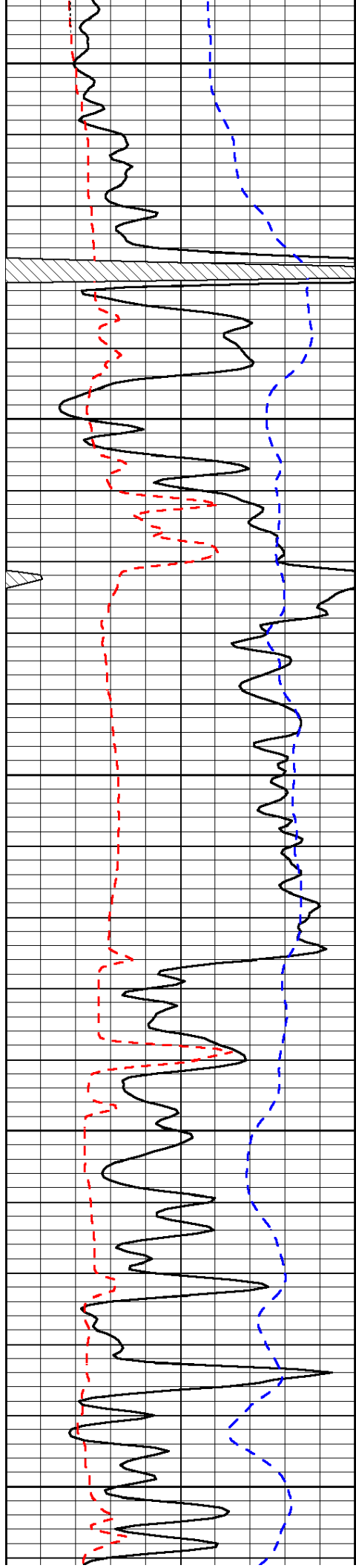
Database File: c:\warrior\data\reif_huslig no. 2\reif_huslig_2hd.db
 Dataset Pathname: DIL/reistk3
 Presentation Format: micro
 Dataset Creation: Wed Mar 23 16:45:31 2011
 Charted by: Depth in Feet scaled 1:240

0	Gamma Ray	150
6	Micro Log Caliper (GAPI)	16
-200	SP (mV)	0

0	Micro Inverse 1 X 1	40
0	Micro Normal 2"	40
15000	Line Weight	0

LSPD





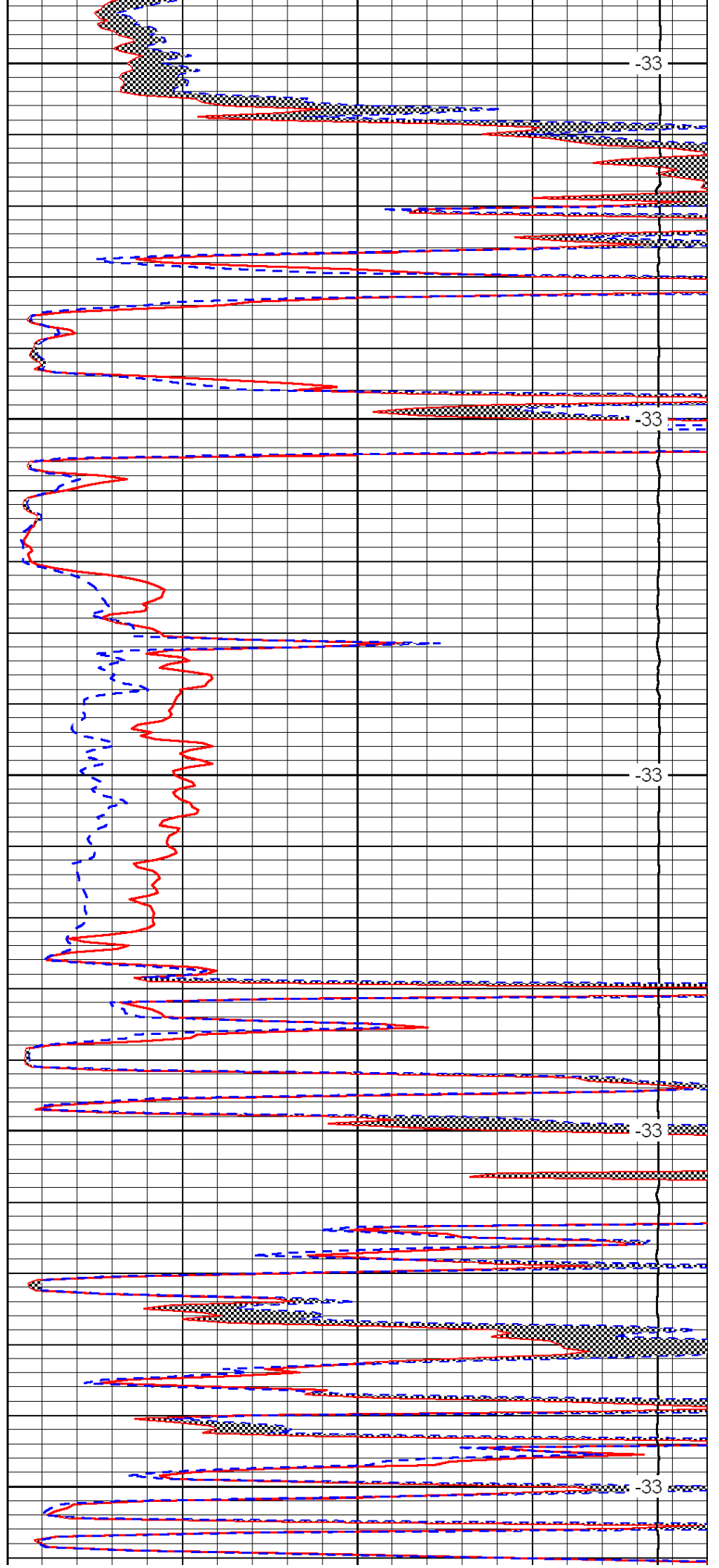
2900

2950

3000

3050

3100



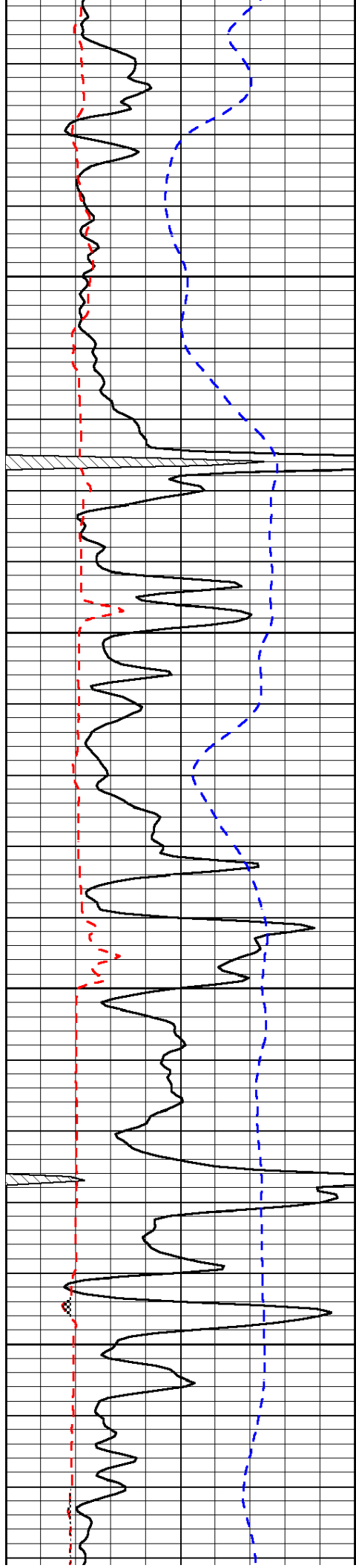
-33

-33

-33

-33

-33

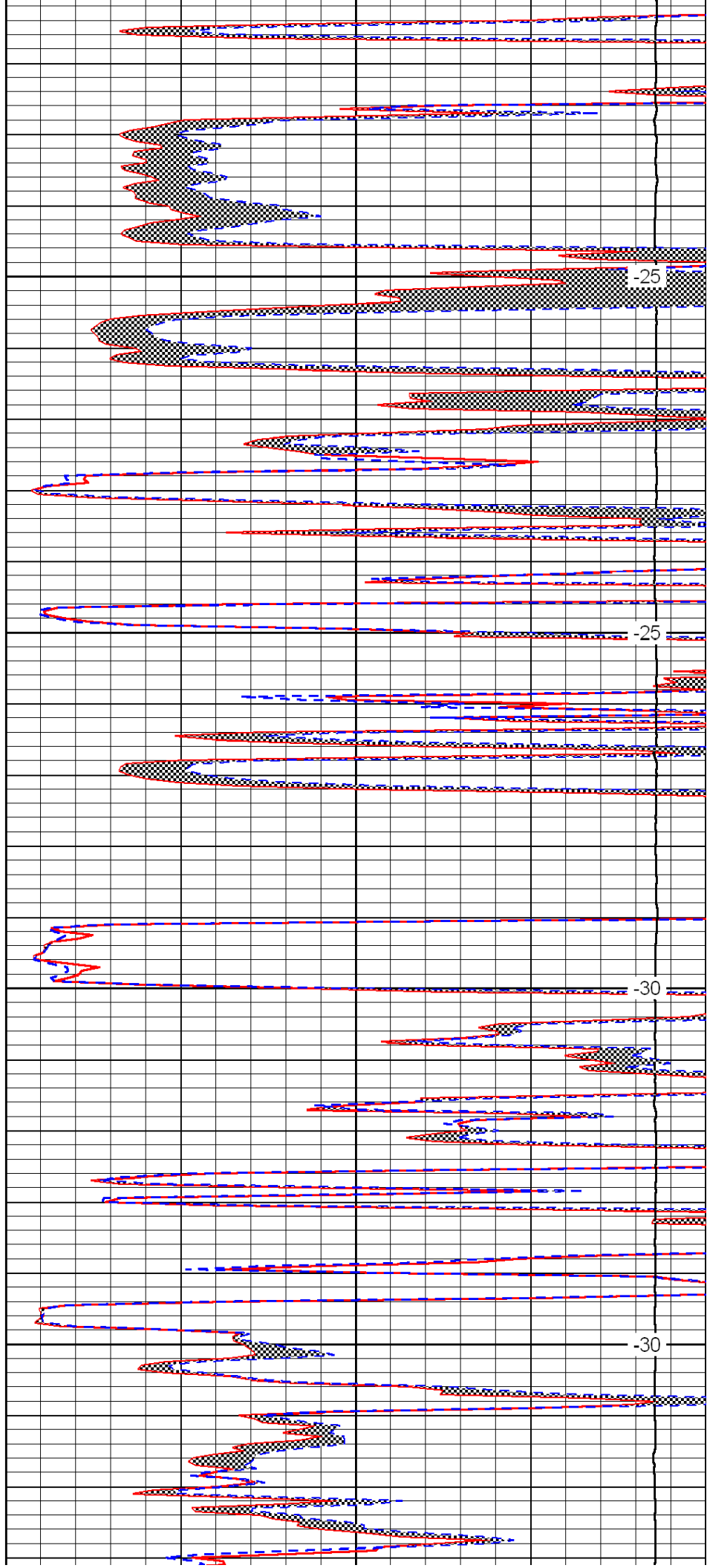


3150

3200

3250

3300

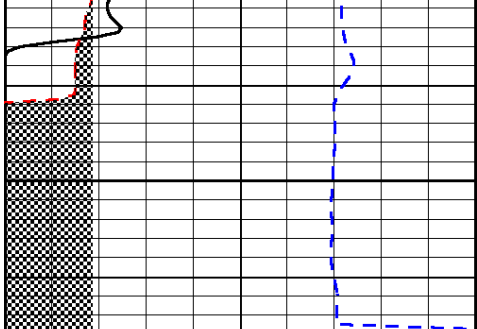


-25

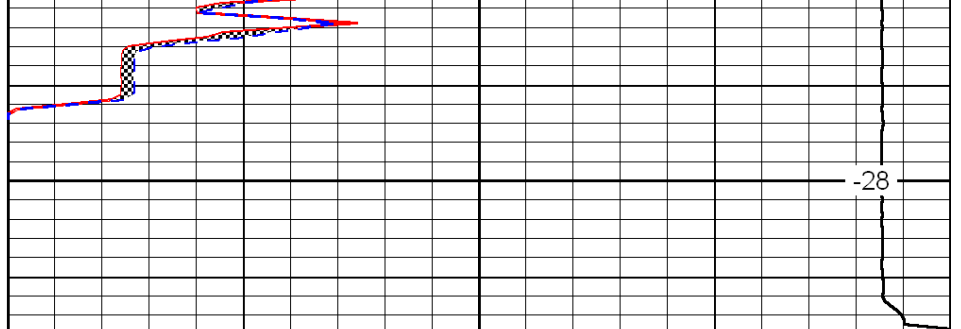
-25

-30

-30



3350



0	Gamma Ray	150
6	Micro Log Caliper (GAPI)	16
-200	SP (mV)	0

0	Micro Inverse 1 X 1	40
0	Micro Normal 2''	40
15000	Line Weight	0

LSPD