



# Dual Compensated Porosity Log

**DIGITAL LOG** (785) 625-3858

API No. 15-101-22,278-00-00

Company **Larson Engineering, Inc.**  
 Well **Harris Unit No. 1-20**  
 Field **Cowdery**  
 County **Lane** State **Kansas**

Location **SE NE SE SW  
758' FSL & 2,502' FWL**

Sec: 20 Twp: 18 S Rge: 30 W

Other Services  
DIL  
MEL

Permanent Datum **Ground Level** Elevation **2889**  
 Log Measured From **Kelly Bushing** 7 Ft. Above Perm. Datum  
 Drilling Measured From **Kelly Bushing**

K.B. 2896  
D.F. 2889  
G.L. 2889

Date **2/21/2011**

Run Number **One**

Type Log **CNL / CDL**

Depth Driller **4650**

Depth Logger **4651**

Bottom Logged Interval **4630**

Top Logged Interval **3600**

Type Fluid In Hole **Chemical**

Salinity, PPM CL **3000**

Density **9.4**

Level **Full**

Max. Rec. Temp. F **123**

Operating Rig Time **4 Hours**

Equipment -- Location **10 Hays**

Recorded By **Jim Schuler**

Witnessed By **Bob Lewellyn**

Borehole Record				Casing Record			
Run No.	Bit	From	To	Size	Wgt.	From	To
1	12.25	00	255	8.625	24#	00	255
2	7.875	255	4650				

<<< Fold Here >>>

All interpretations are opinions based on inferences from electrical or other measurements and we cannot and do not guarantee the accuracy or correctness of any interpretation, and we shall not, except in the case of gross or willful negligence on our part, be liable or responsible for any loss, costs, damages, or expenses incurred or sustained by anyone resulting from any interpretation made by any of our officers, agents or employees. These interpretations are also subject to our general terms and conditions set out in our current Price Schedule.

**Comments**

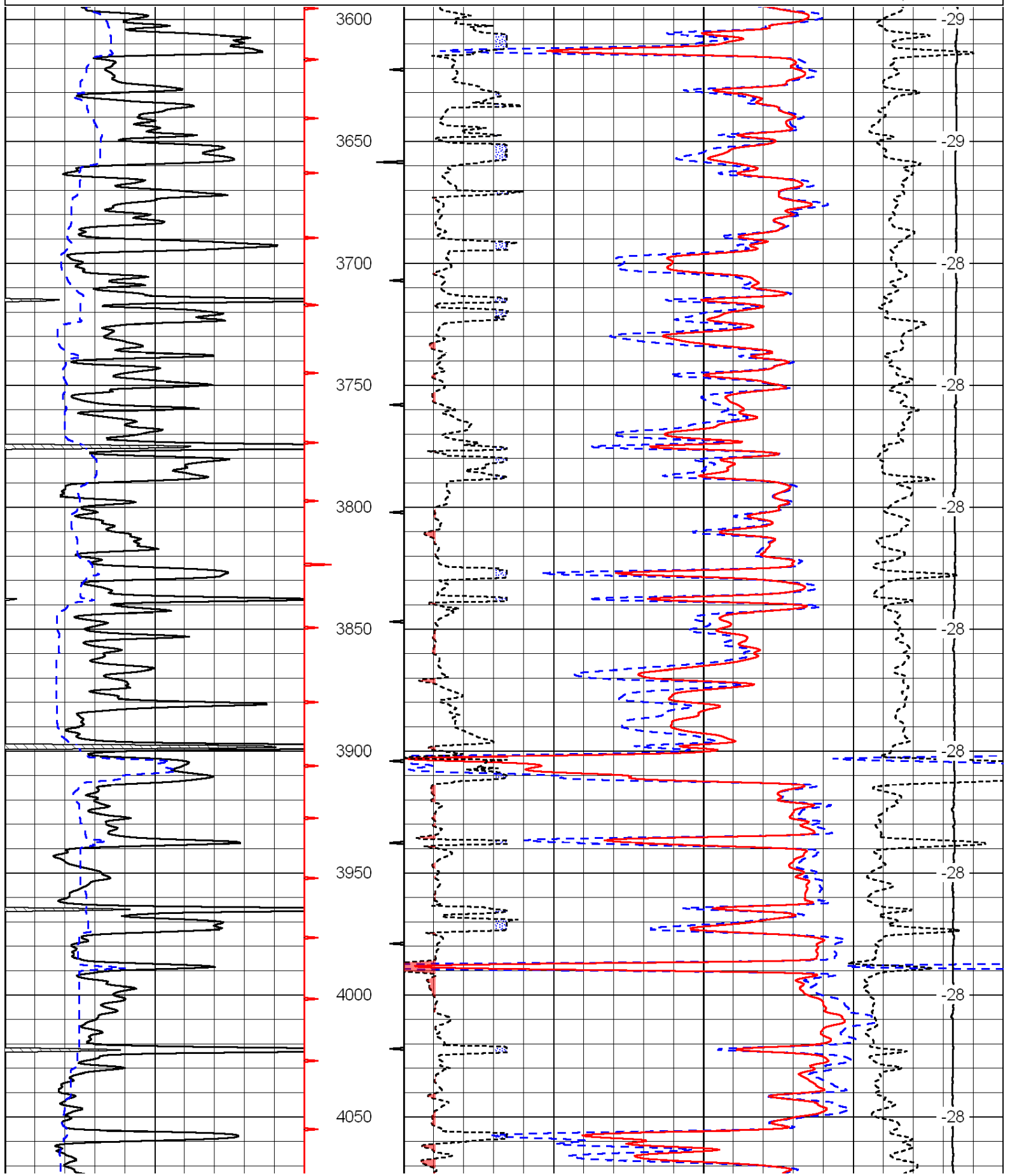
Thank you for using Log-Tech, Inc.  
 (785) 625-3858

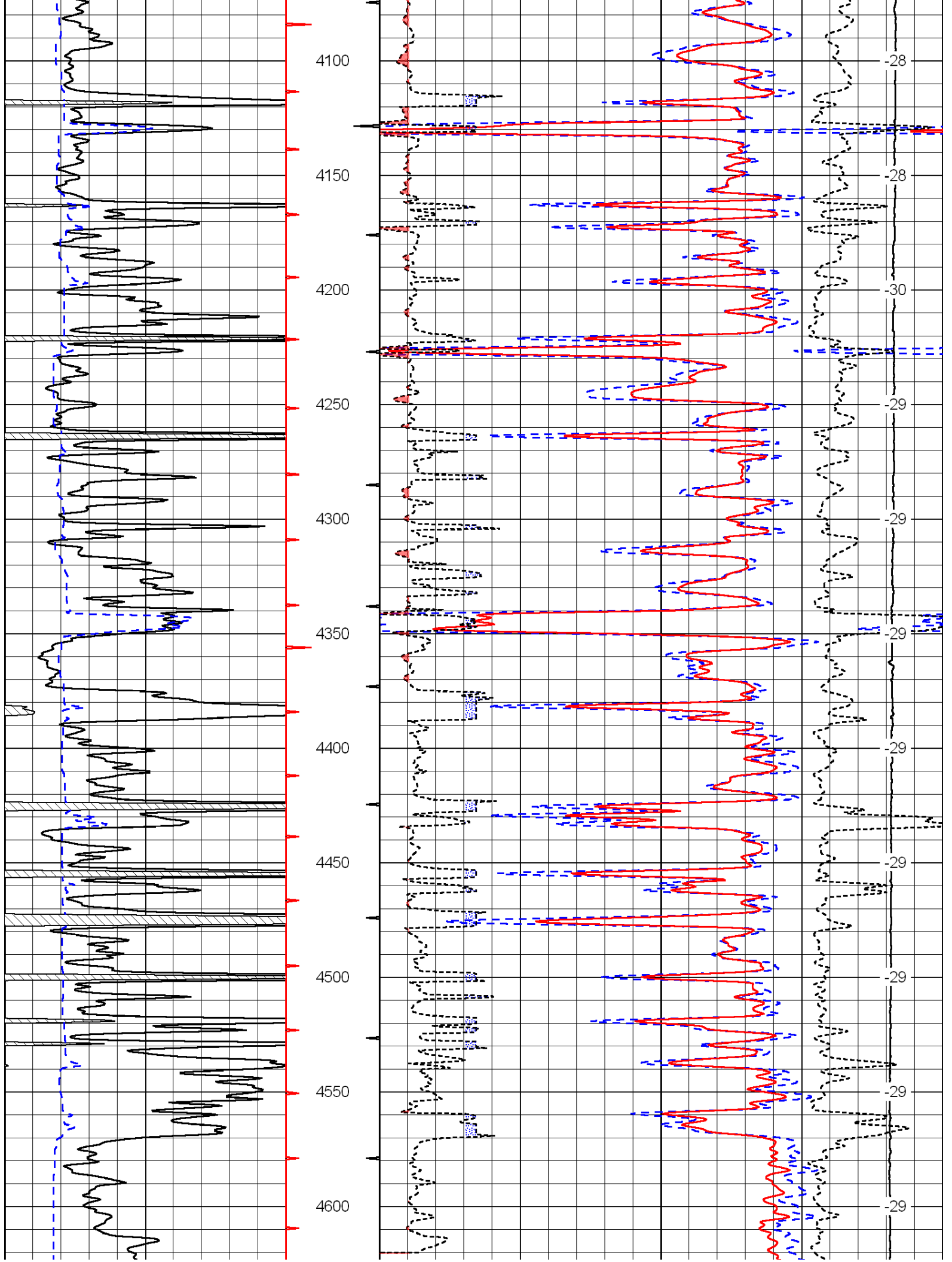
Dighton, Kansas, 10 Miles West to Bison Road,  
 1 Mile South to 140 RD, West 1/2 Mile, North Into

Database File: c:\warrior\data\larson\_harris unit no. 1-20\larson.db  
 Dataset Pathname: dil\larstk  
 Presentation Format: cdl  
 Dataset Creation: Tue Feb 22 00:07:58 2011  
 Charted by: Depth in Feet scaled 1:600

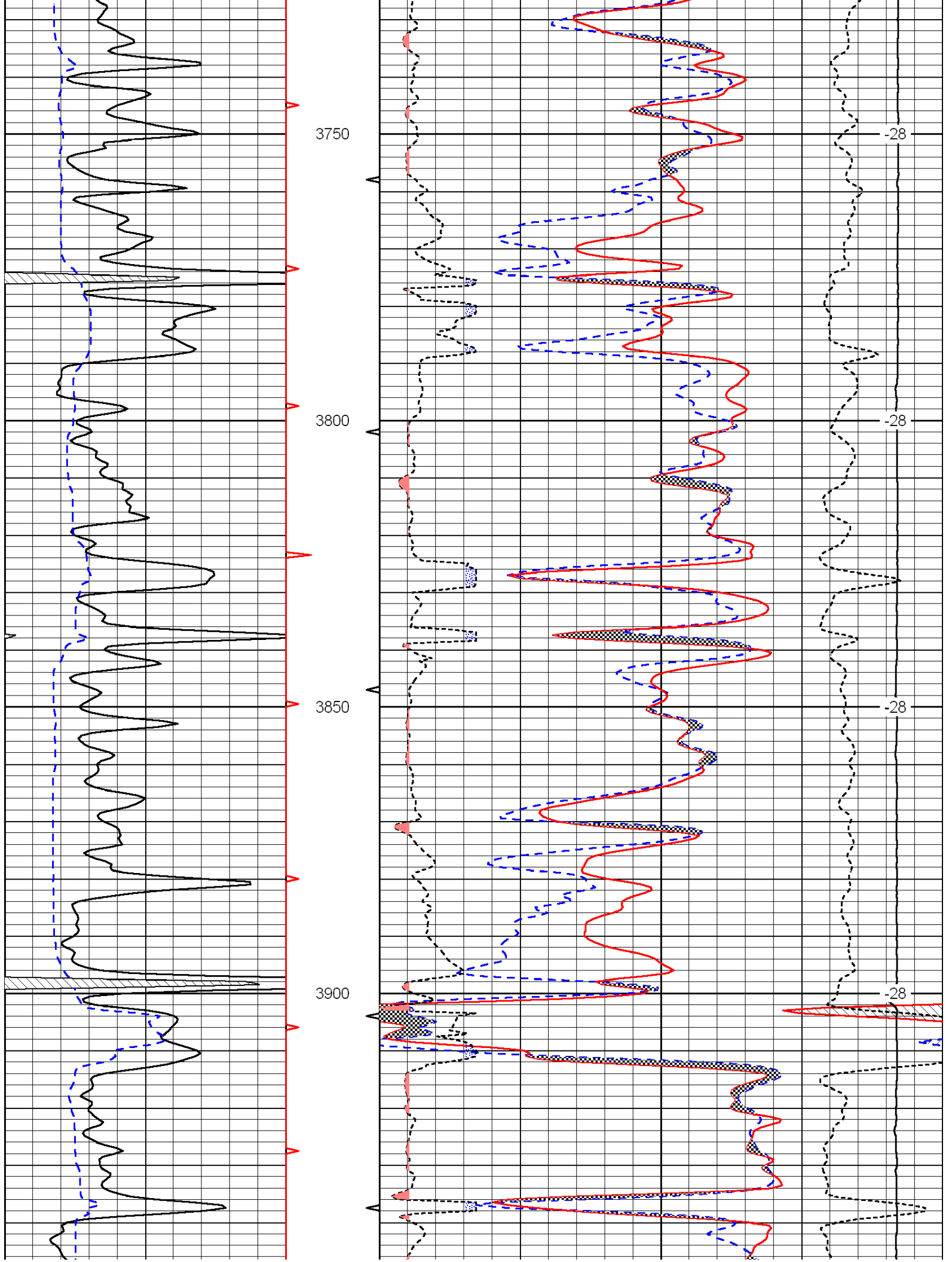
0	Gamma Ray	150
6	Caliper (GAPI)	16

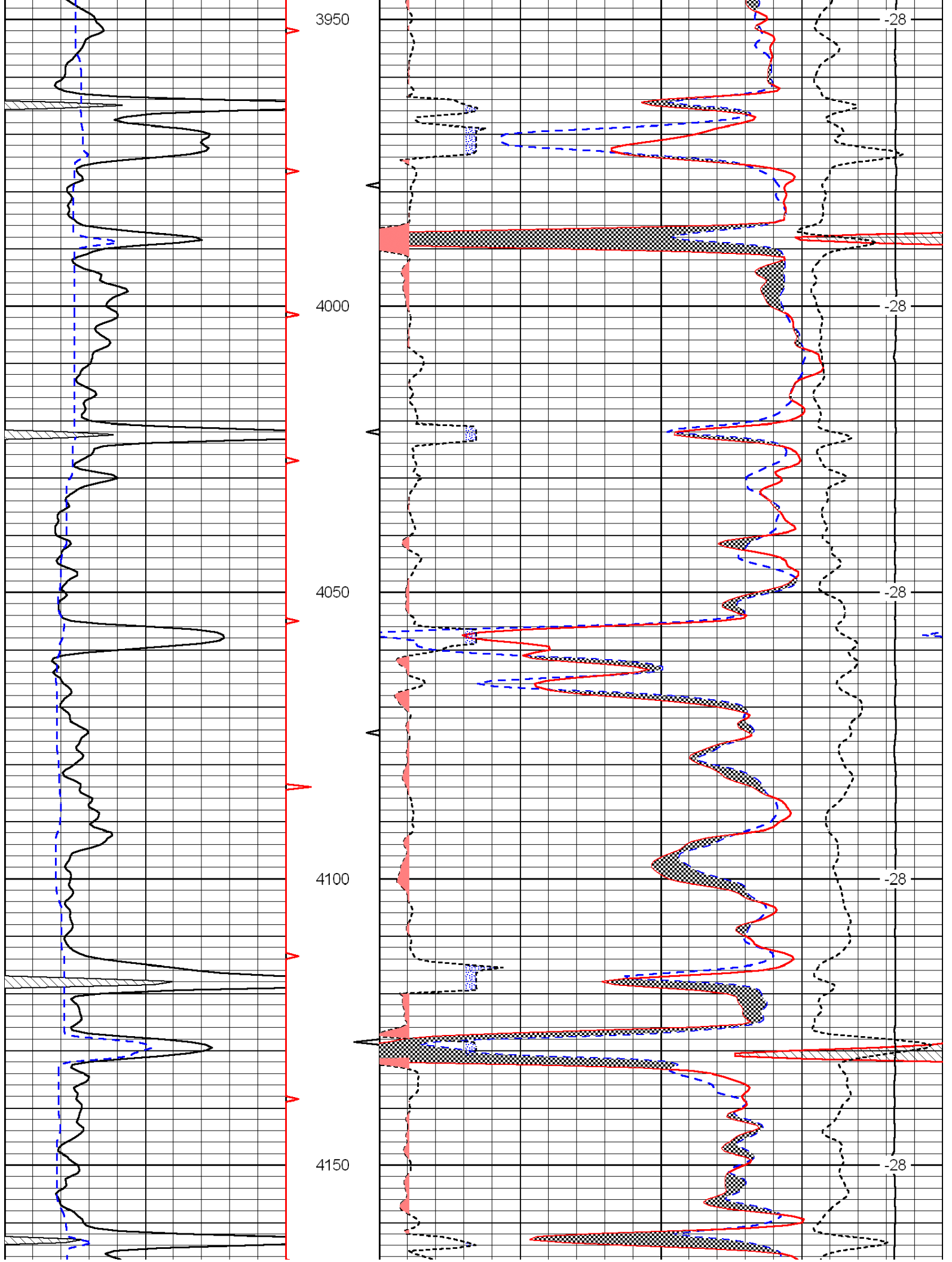
30	Compensated Density		-10
2	Bulk Density		3
15000	Line Tension		0
2.625	DGA	3.425	-0.25
Correction			0.25
LSPD			

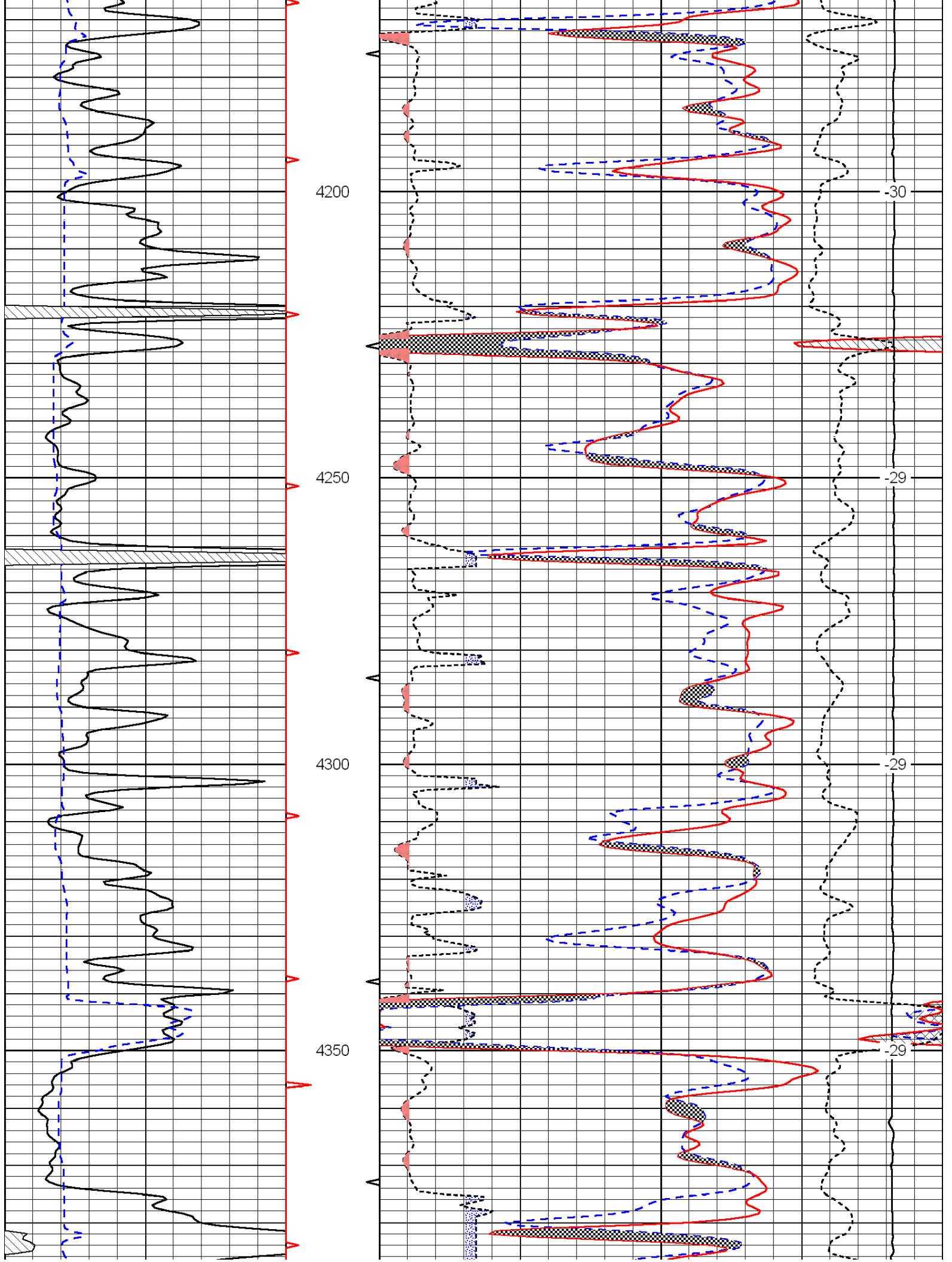




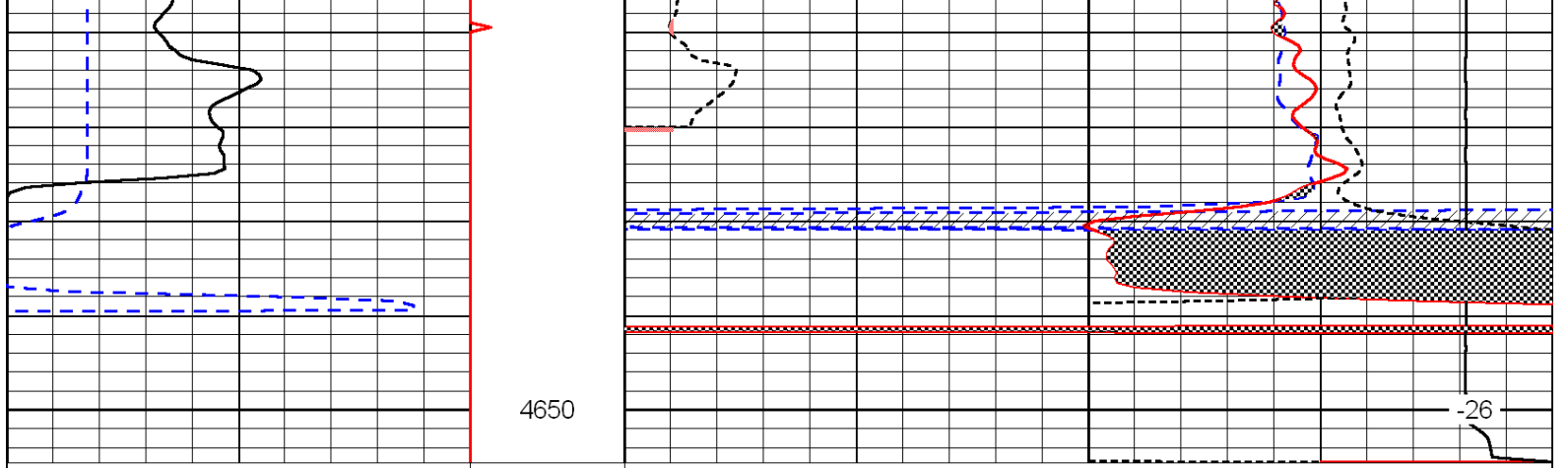












0	Gamma Ray	150
6	Caliper (GAPI)	16

4650

30	Compensated Neutron (Limestone)			-10	
30	Compensated Density (Limestone)			-10	
2.625	DGA	3.425	-0.25	Correction	0.25
15000	Line Tension			0	

-26

LSPD