



**Borehole Compensated
Sonic Log**

DIGITAL LOG (785) 625-3858

API No.	15-195-22692-00-00
Company	Cholla Production, LLC
Well	Denison #1-10
Field	Wakeeney
County	Trego
State	Kansas
Location	NE NW NW SW 2530' FSL / 630' FWL
Sec: 10	Twp: 11S Rge: 23W
Other Services	CNL/CDL MEL / DIL

Permanent Datum	Ground Level	Elevation 2251
Log Measured From	Kelly Bushing	5 Ft. Above Perm. Datum
Drilling Measured From	Kelly Bushing	
Date	2/21/2011	K.B. 2256 D.F. 2251 G.L. 2251

Run Number	Two
Type Log	BHC Sonic
Depth Driller	3979
Depth Logger	3985
Bottom Logged Interval	3974
Top Logged Interval	250
Type Fluid In Hole	Chemical
Salinity, PPM CL	1900
Density	9.1
Level	Full
Max. Rec. Temp. F	116
Operating Rig Time	5 Hours
Equipment -- Location	4 Days
Recorded By	R. Barnhart
Witnessed By	Bill Goff

Borehole Record				Casing Record			
Run No.	Bit	From	To	Size	Wgt.	From	To
1	2.25	00	263	8.625	24#	00	263
2	7.875	263	3979				

<<< Fold Here >>>

All interpretations are opinions based on inferences from electrical or other measurements and we cannot and do not guarantee the accuracy or correctness of any interpretation, and we shall not, except in the case of gross or willful negligence on our part, be liable or responsible for any loss, costs, damages, or expenses incurred or sustained by anyone resulting from any interpretation made by any of our officers, agents or employees. These interpretations are also subject to our general terms and conditions set out in our current Price Schedule.

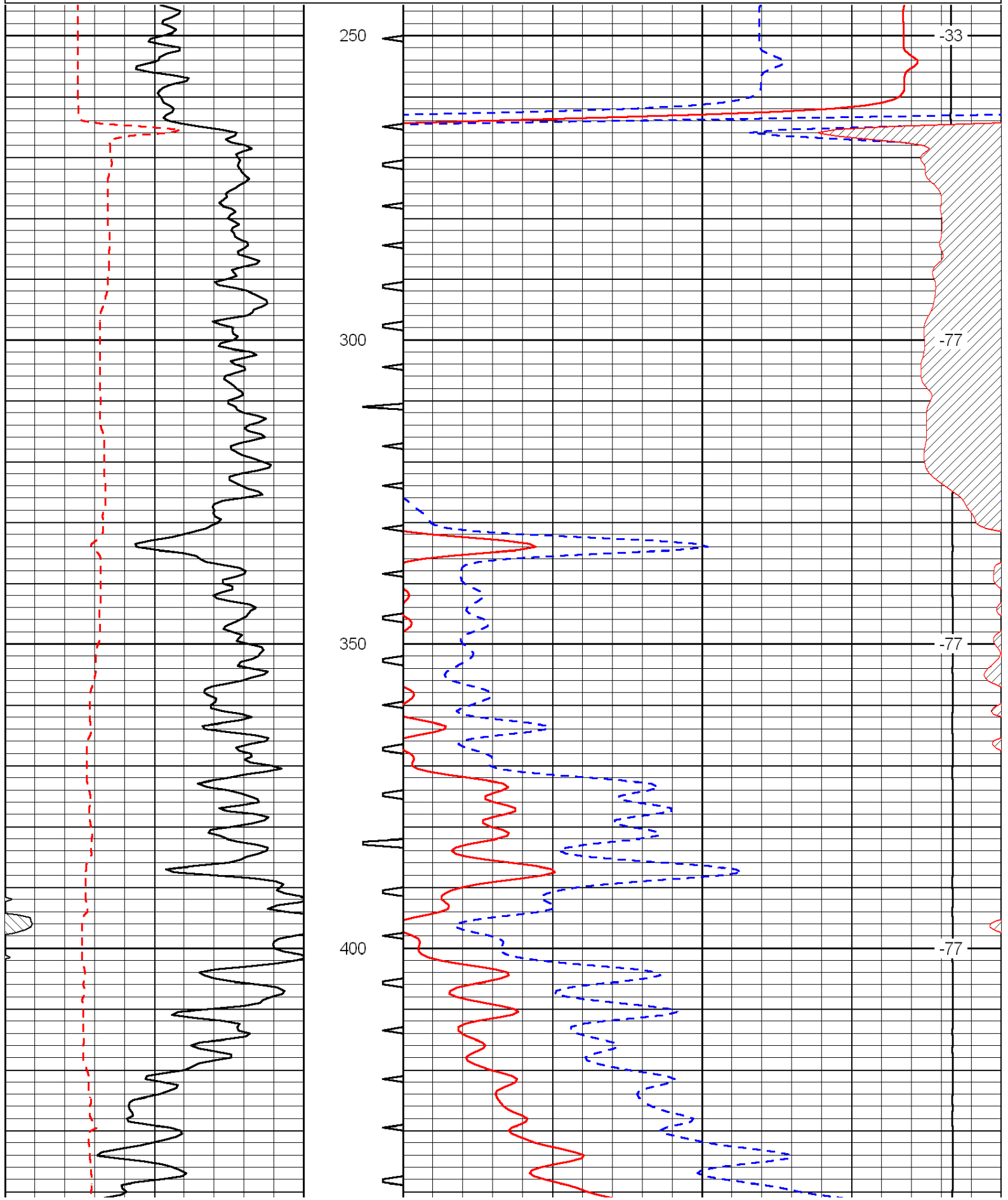
Comments

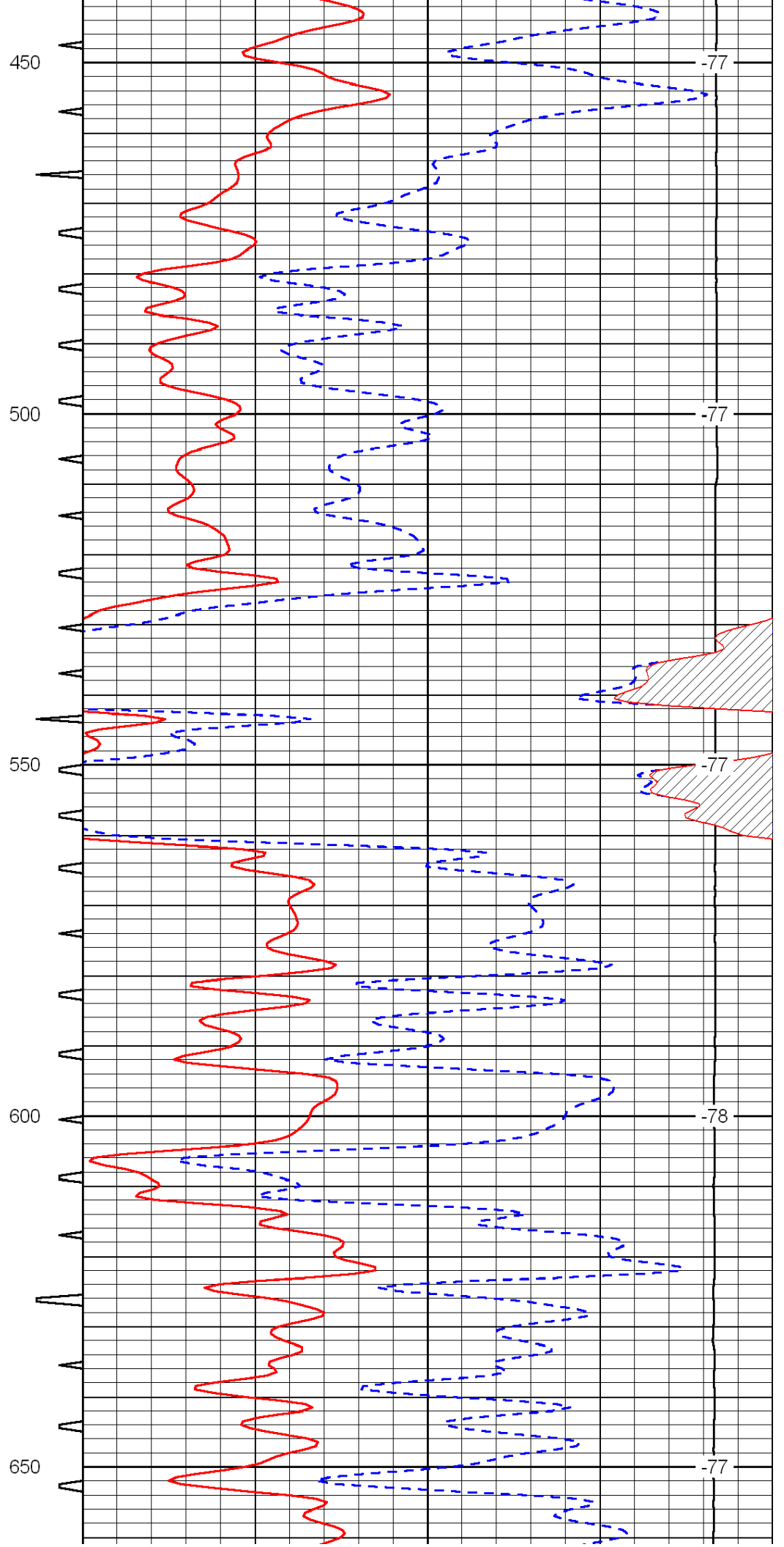
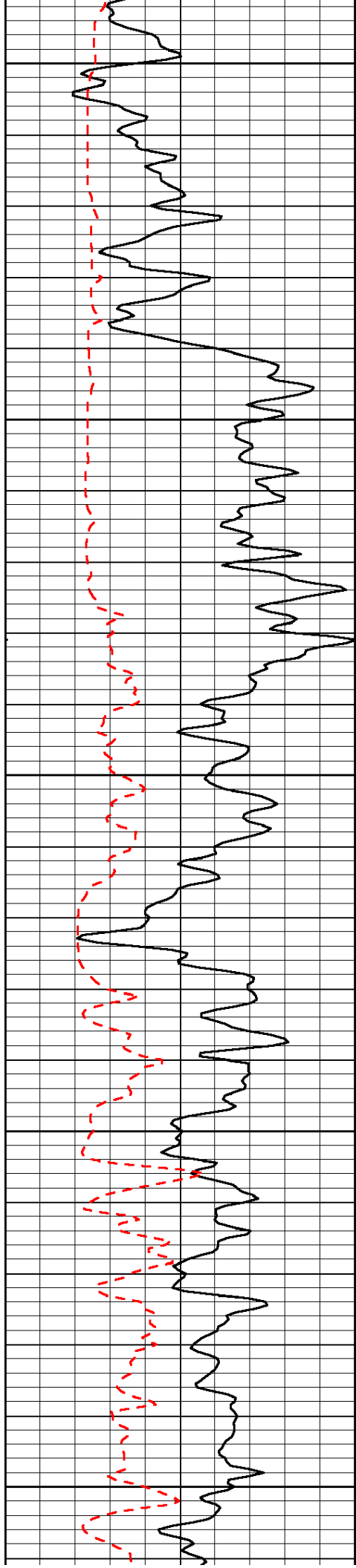
Thank you for using Log-Tech, Inc.
(785) 625-3858

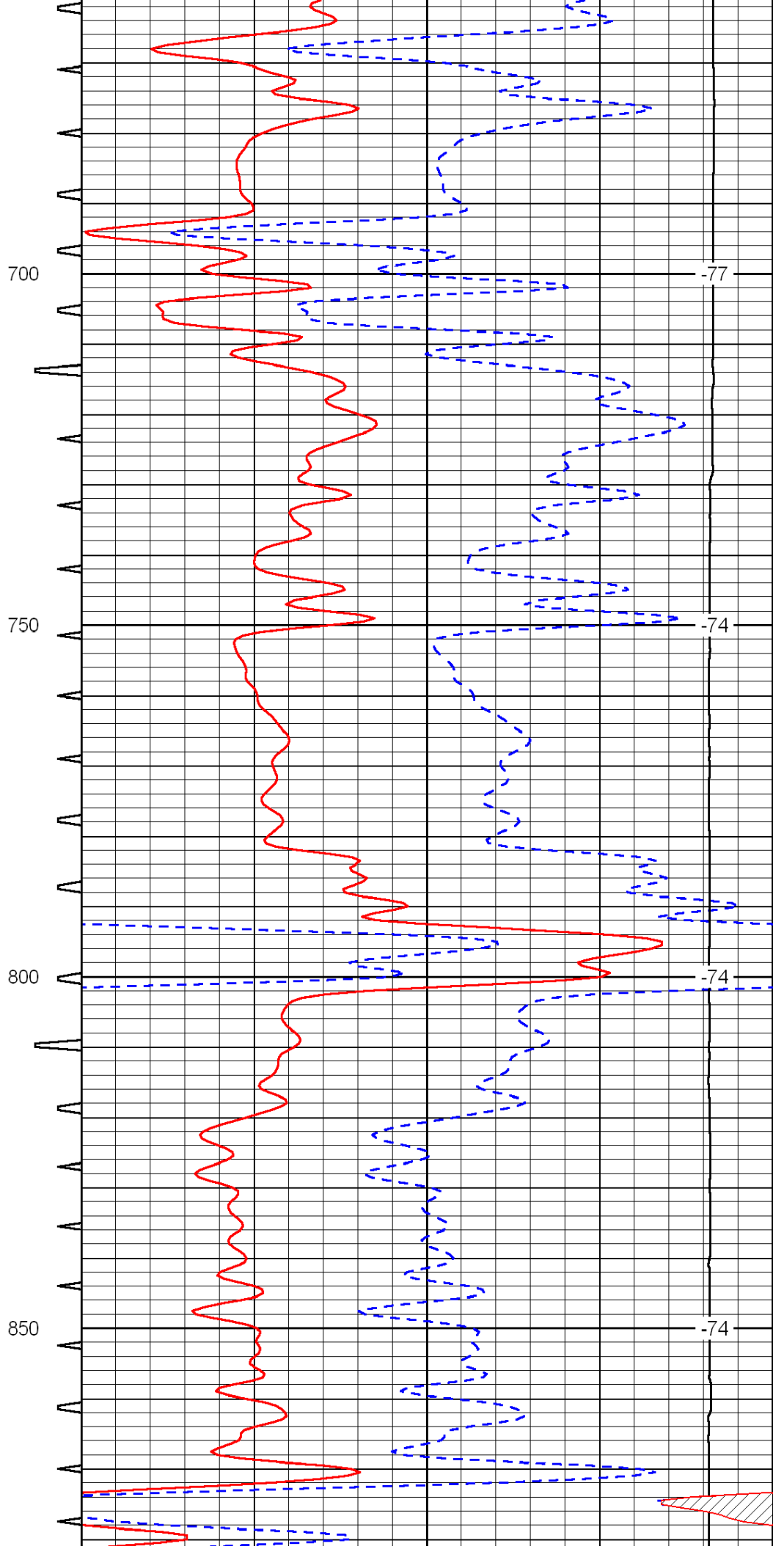
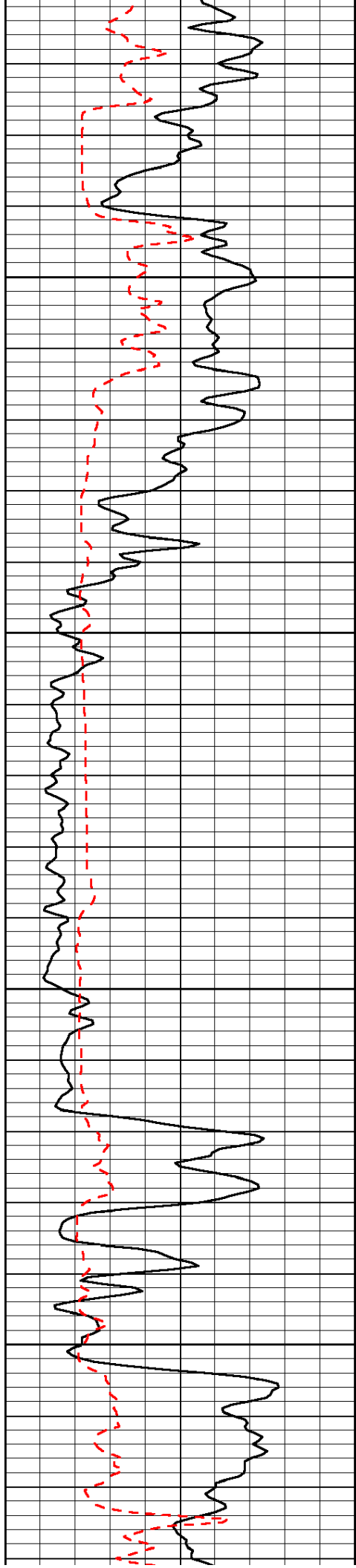
Wakeeney, KS:
6.5N, E into

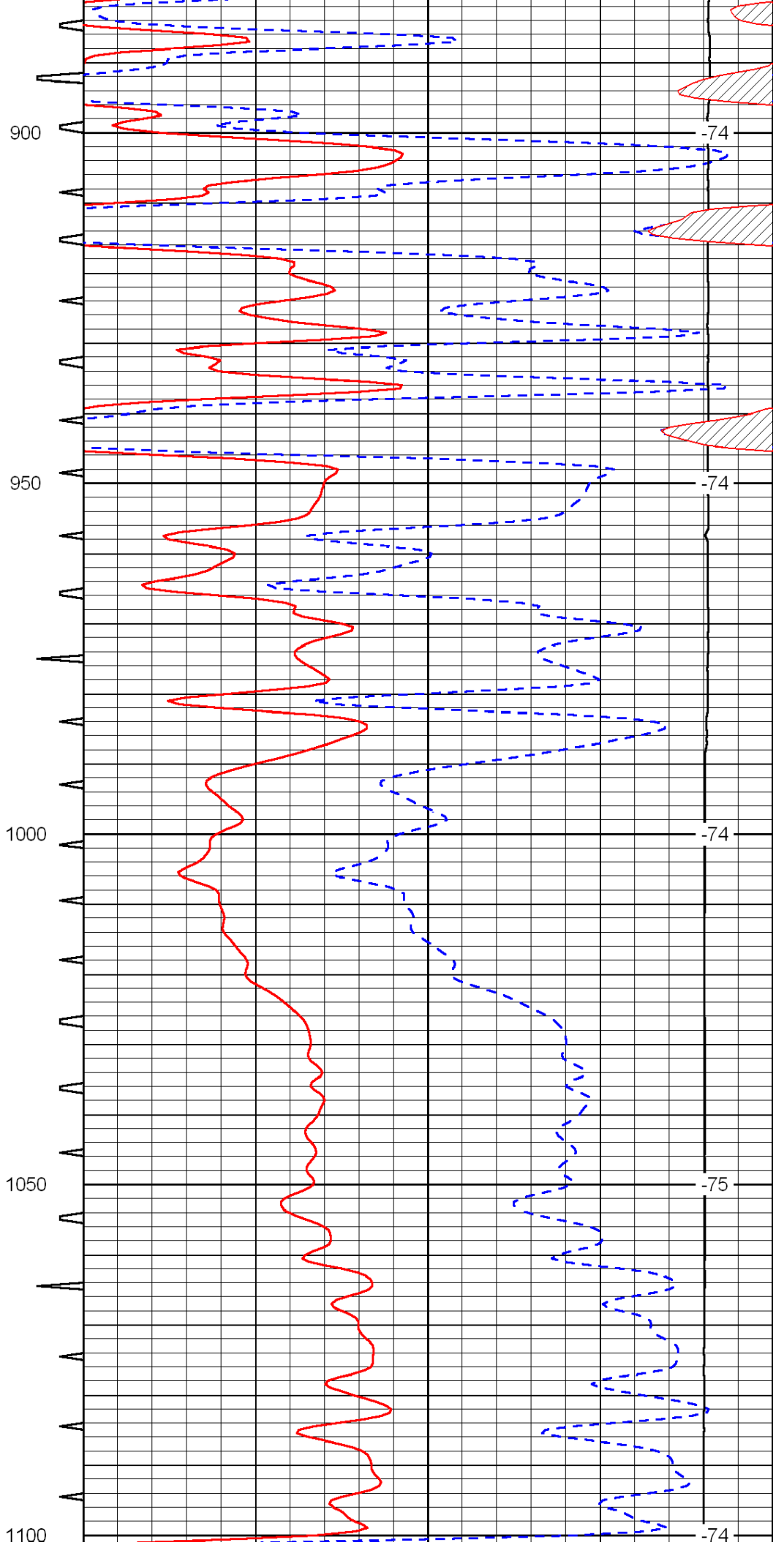
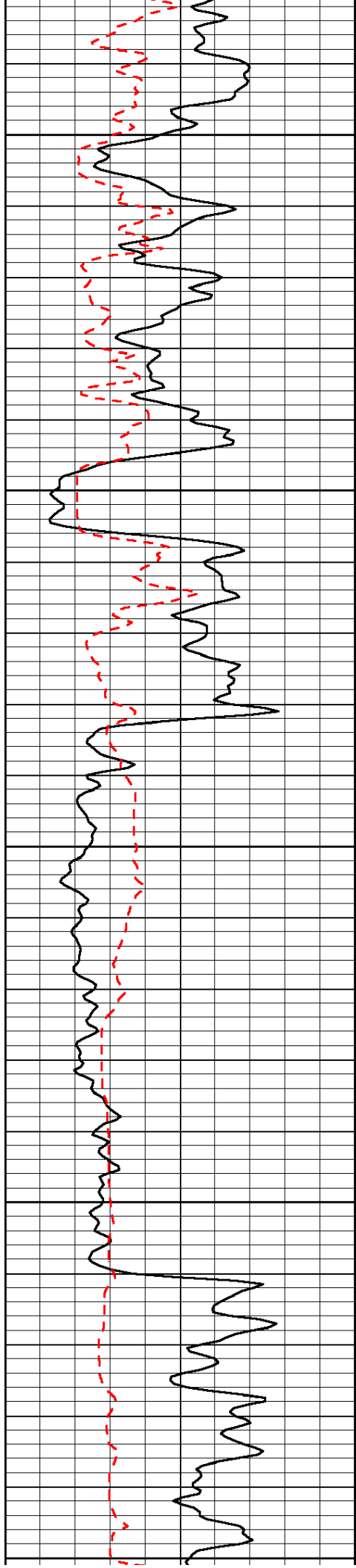
0	Gamma Ray	150	Sonic Int	140	Delta Time (usec/ft)	40
150	Gamma Ray	300	5	0	SPOR	-10
6	Caliper (GAPI)	16		15000	LTEN (lb)	0

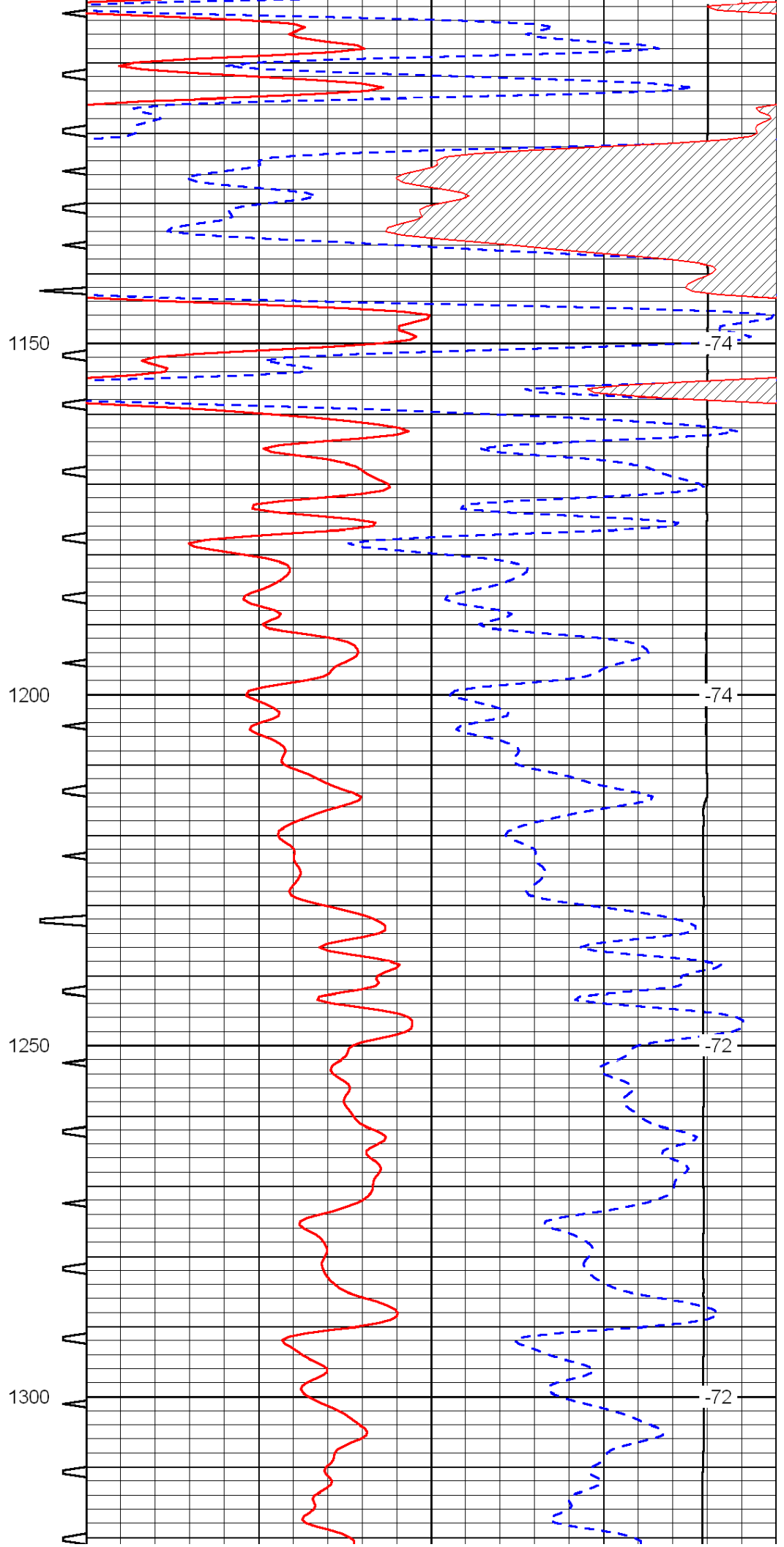
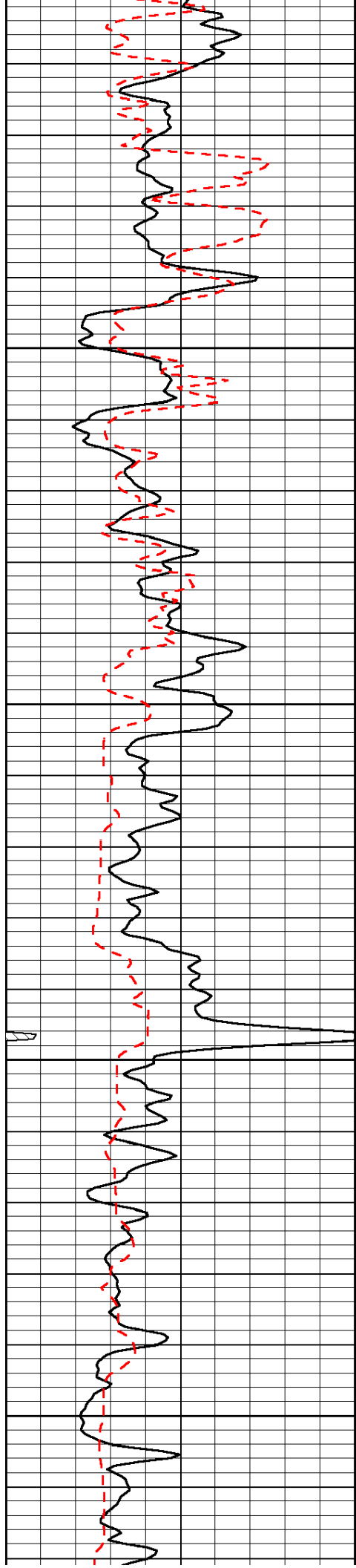
LSPD

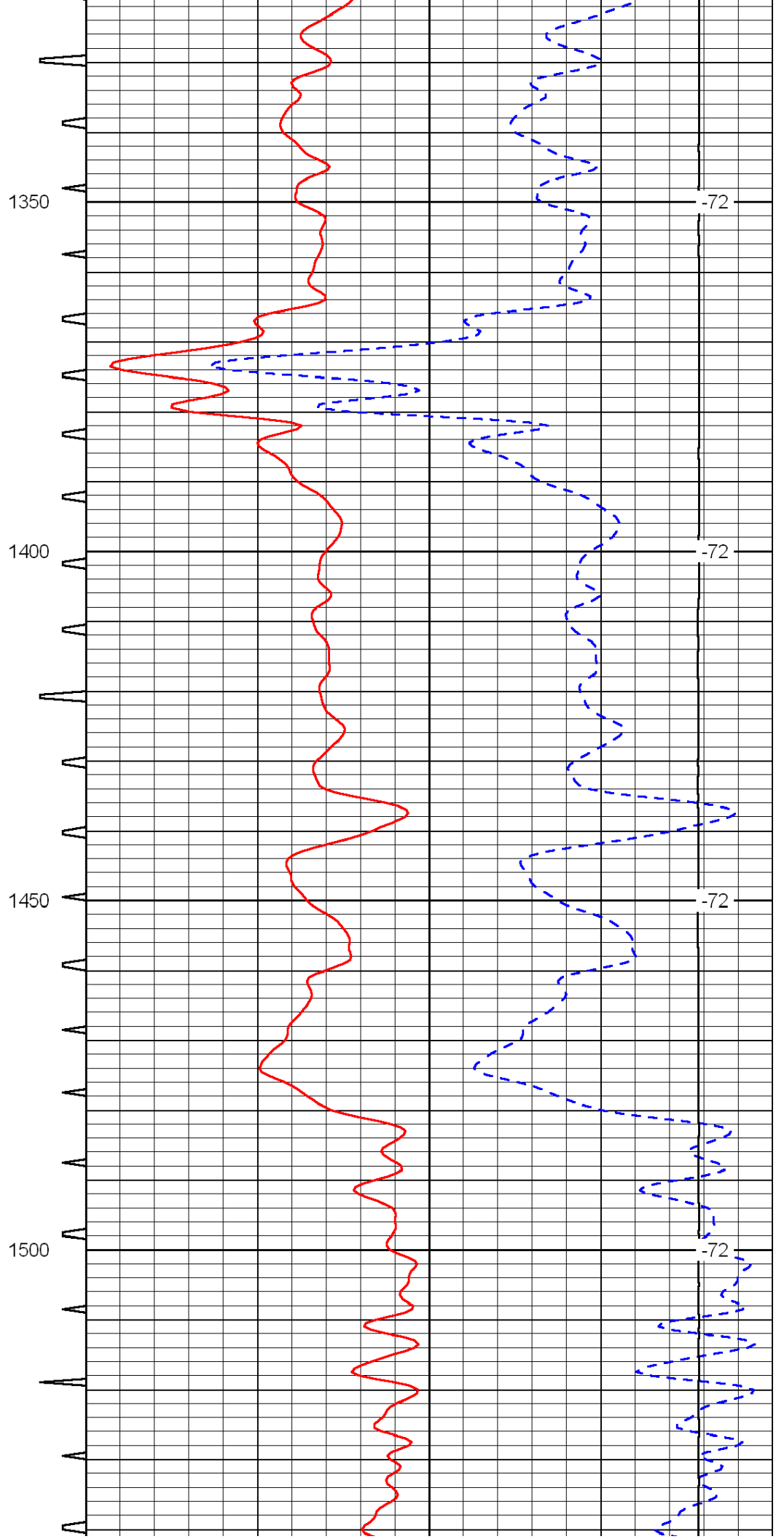
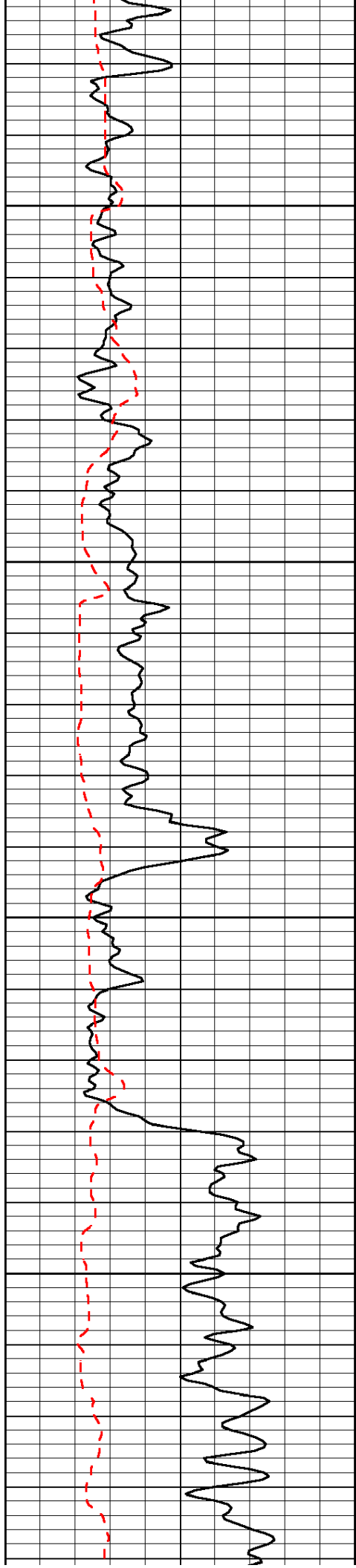


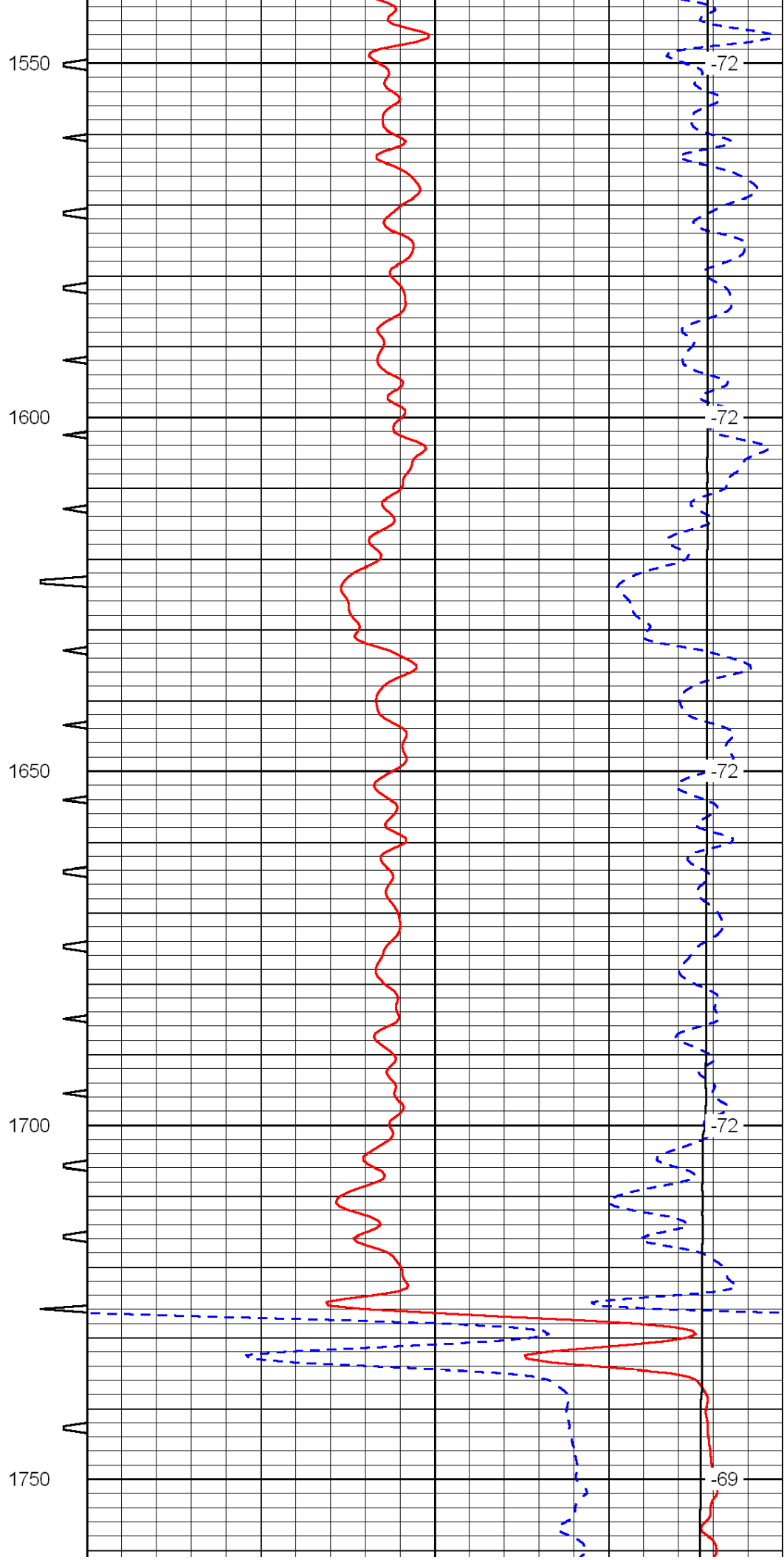
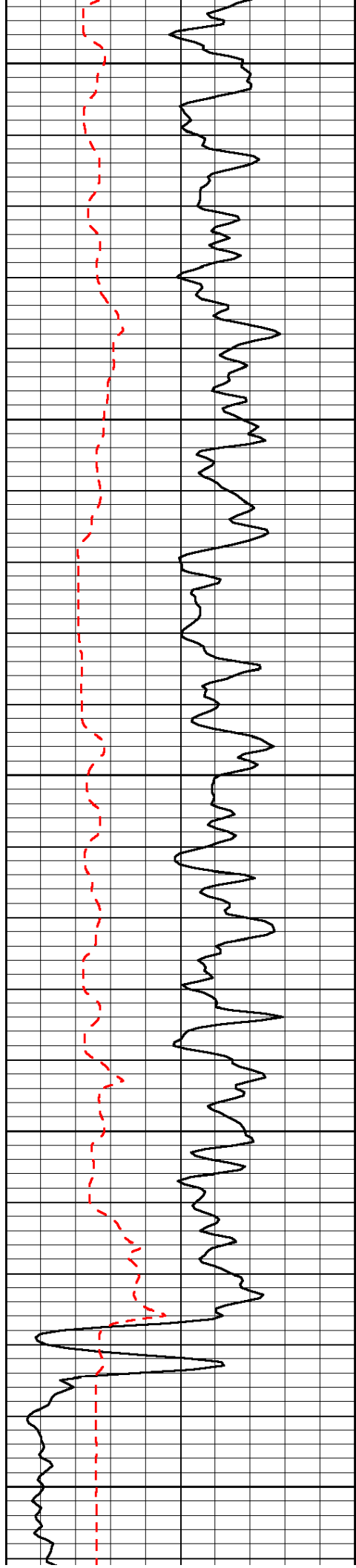


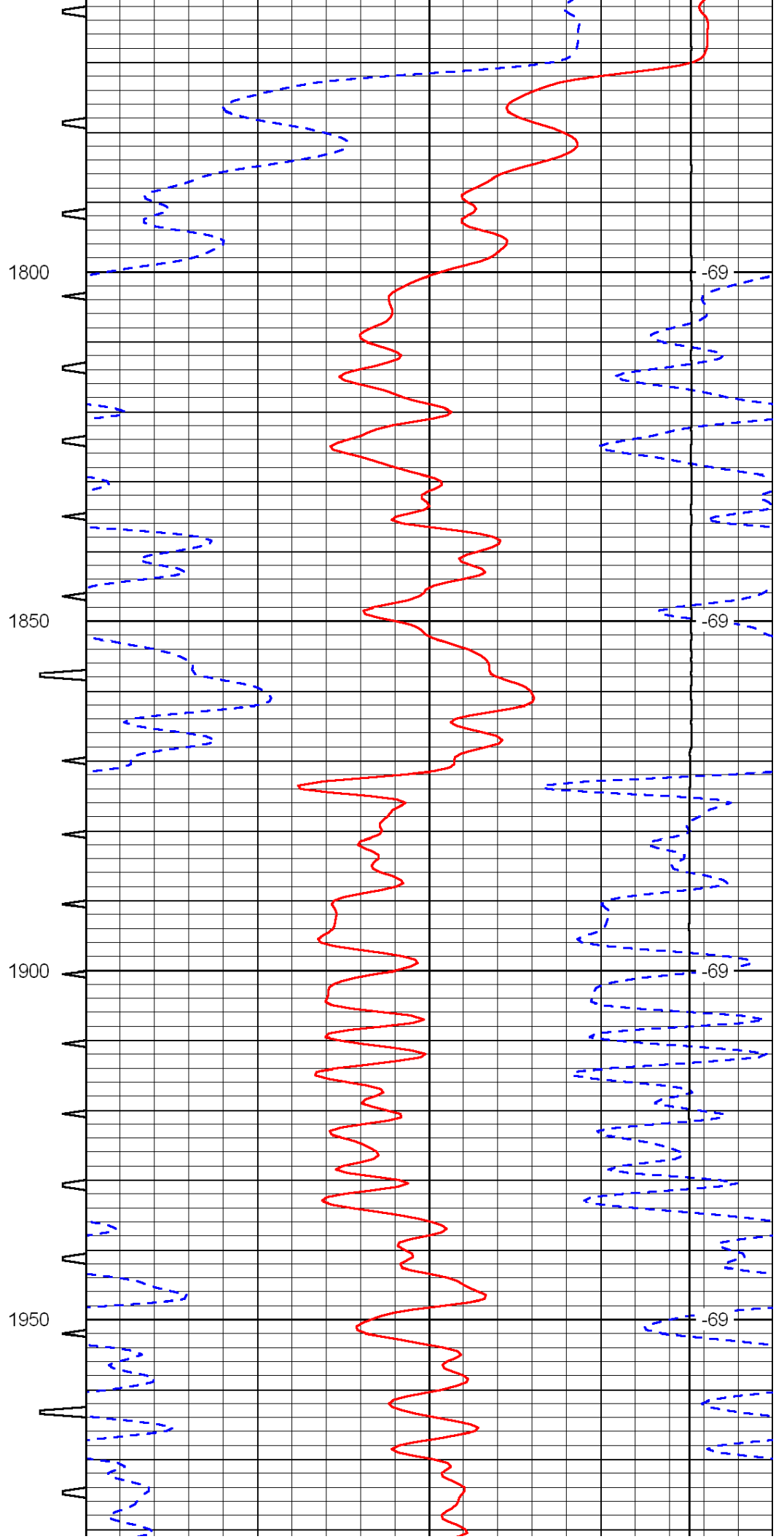
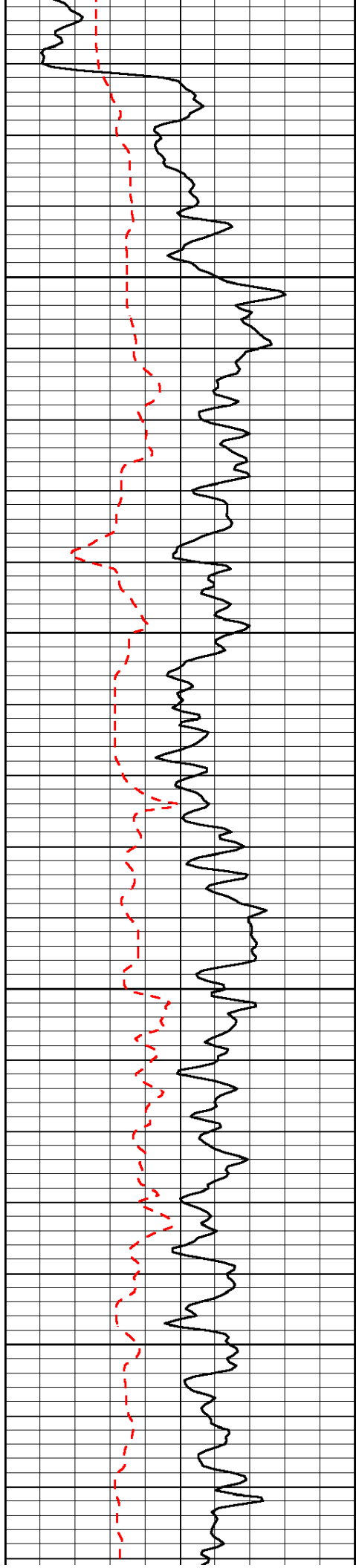


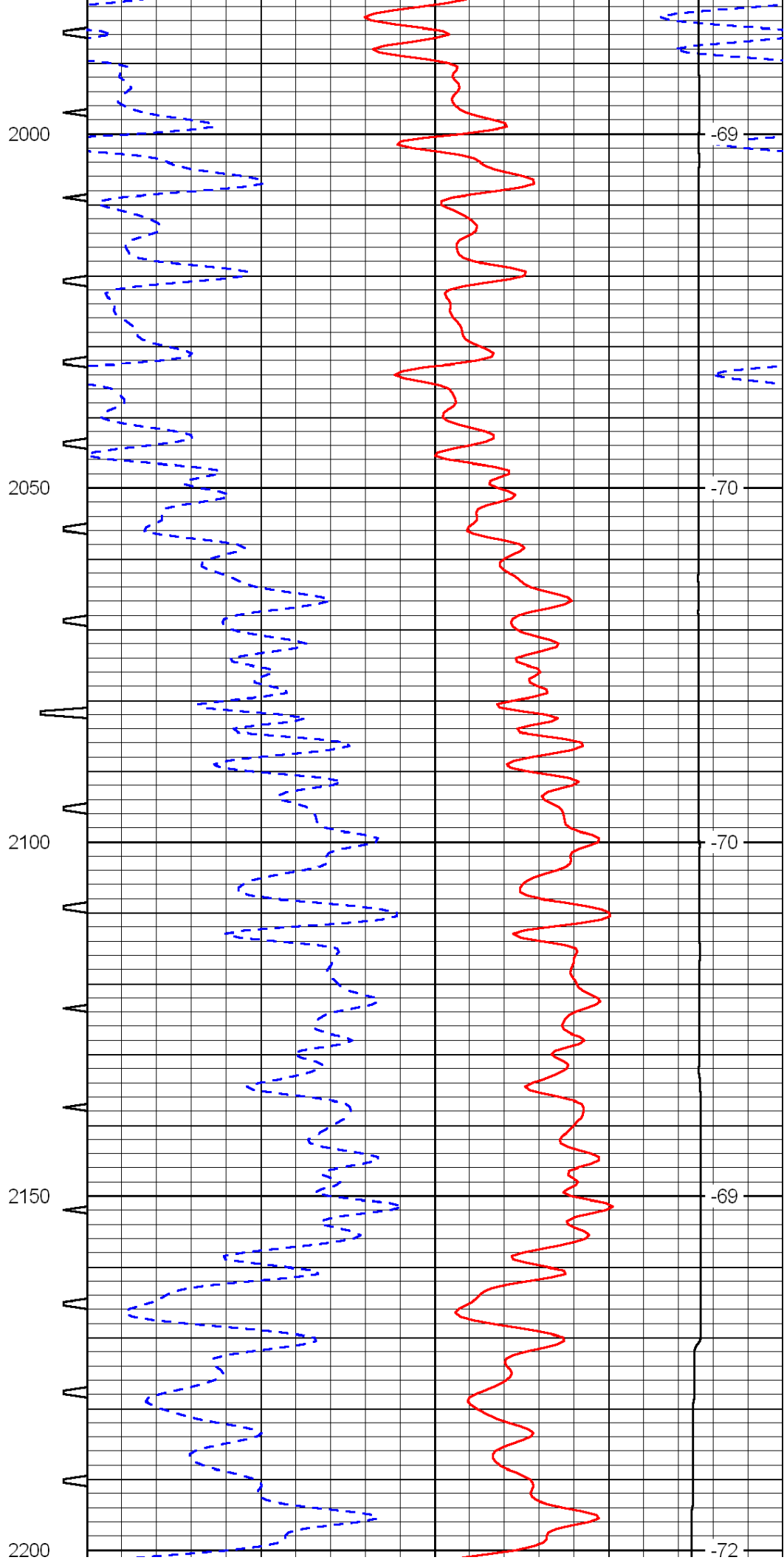
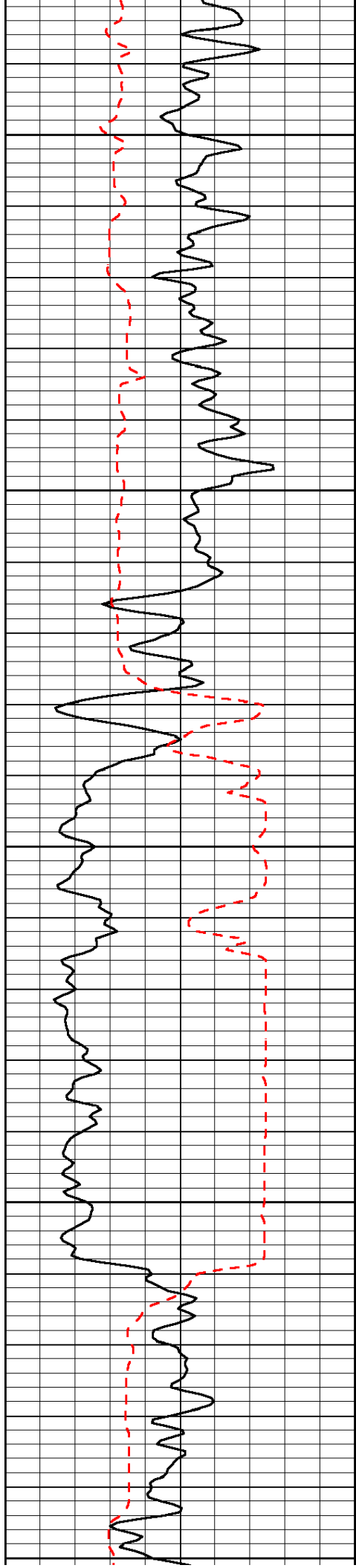


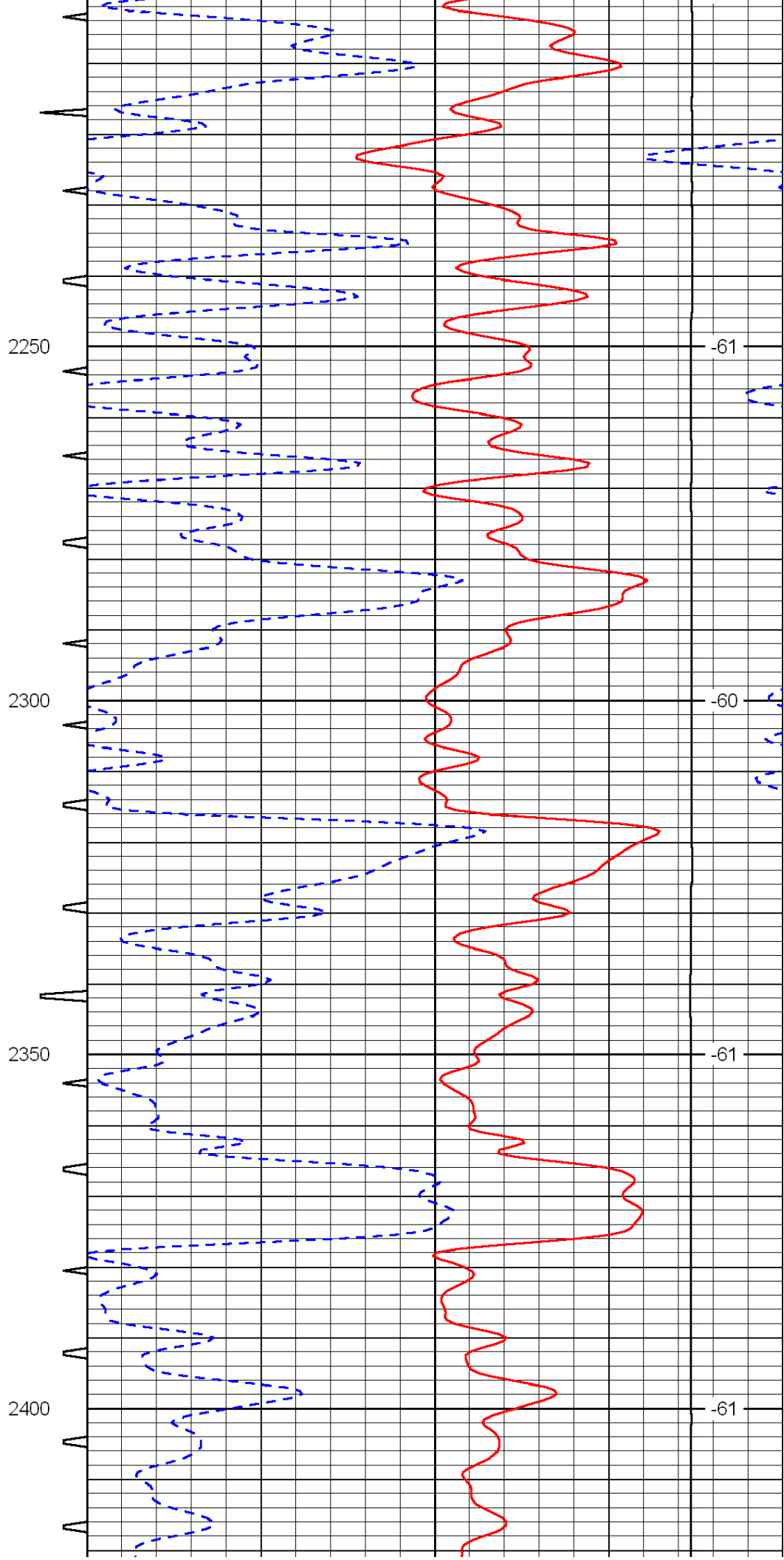
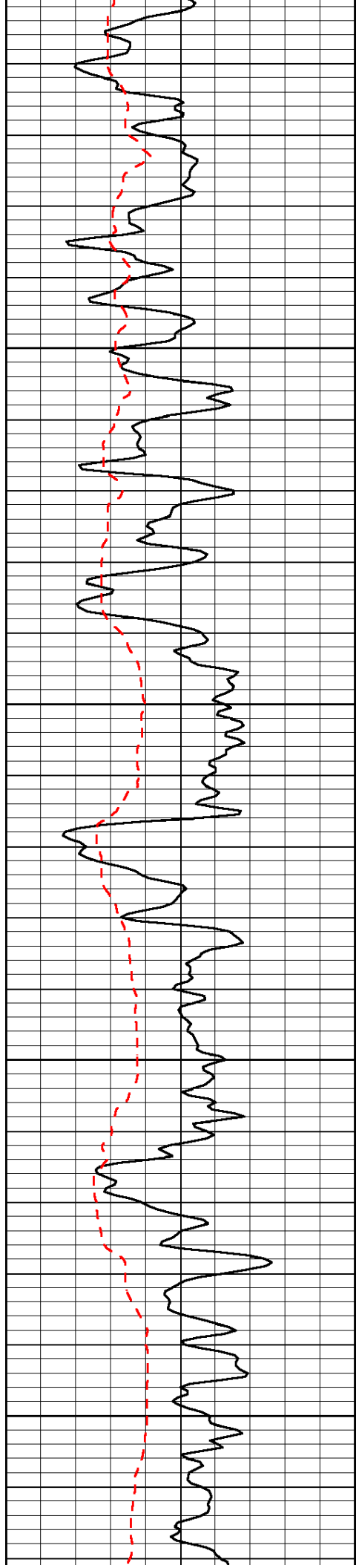


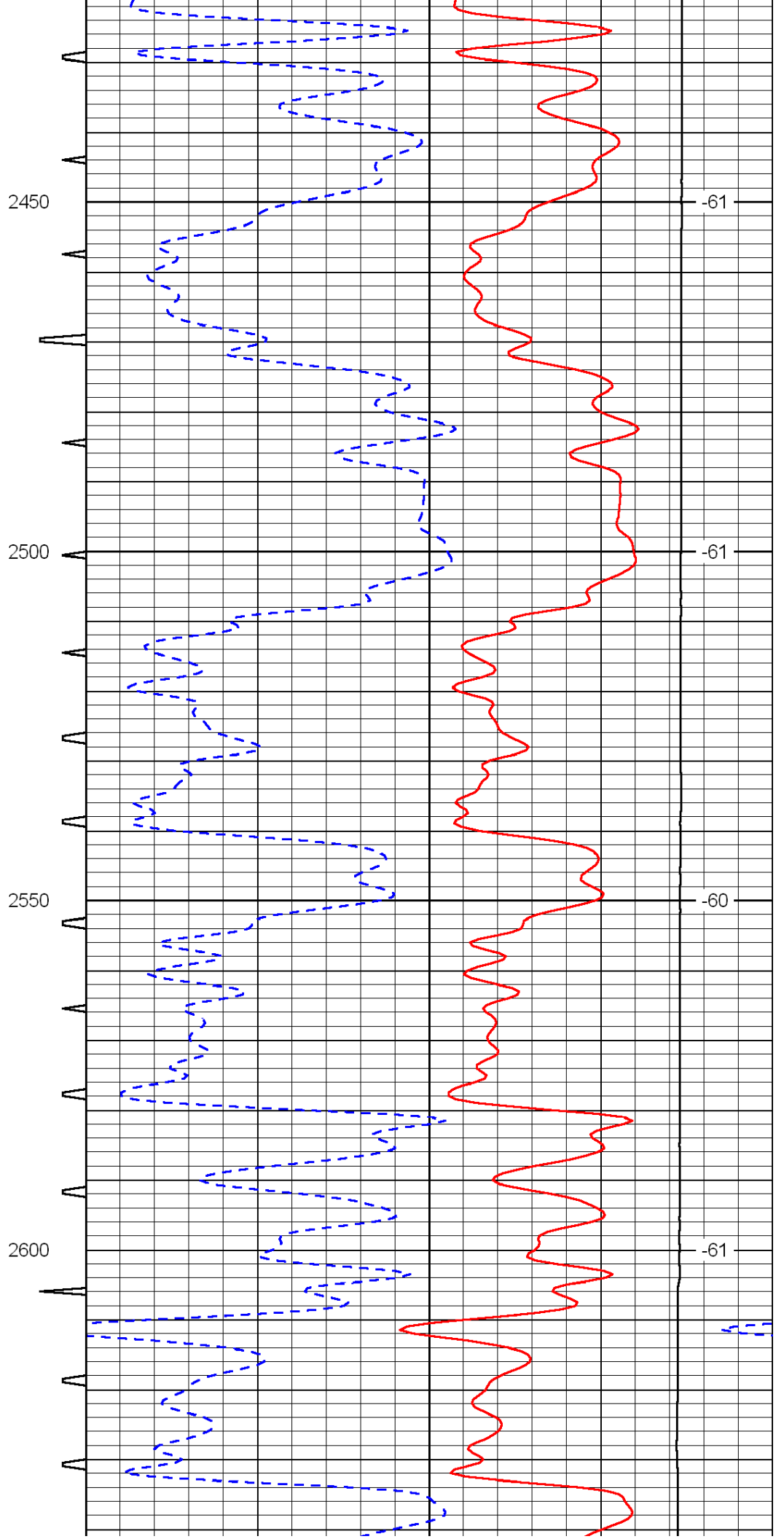
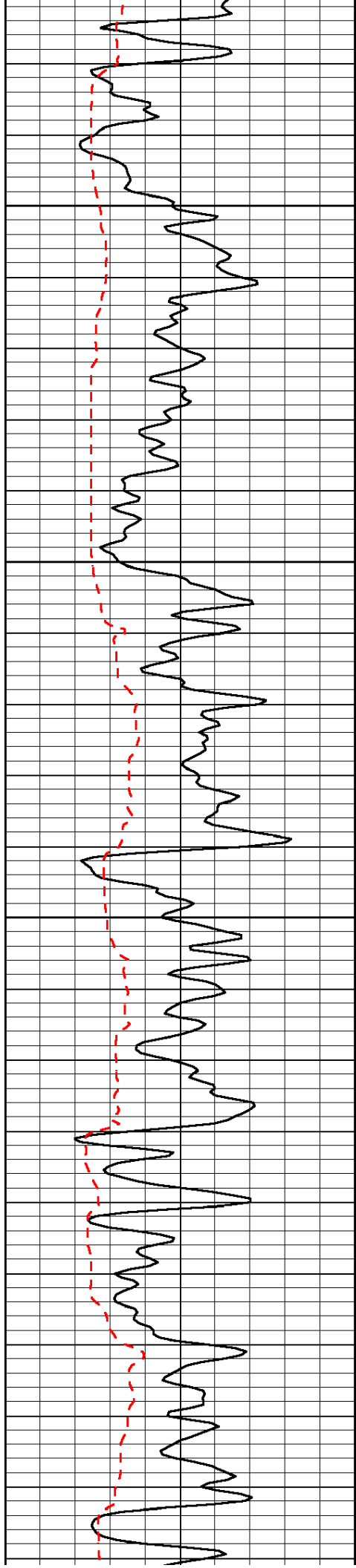


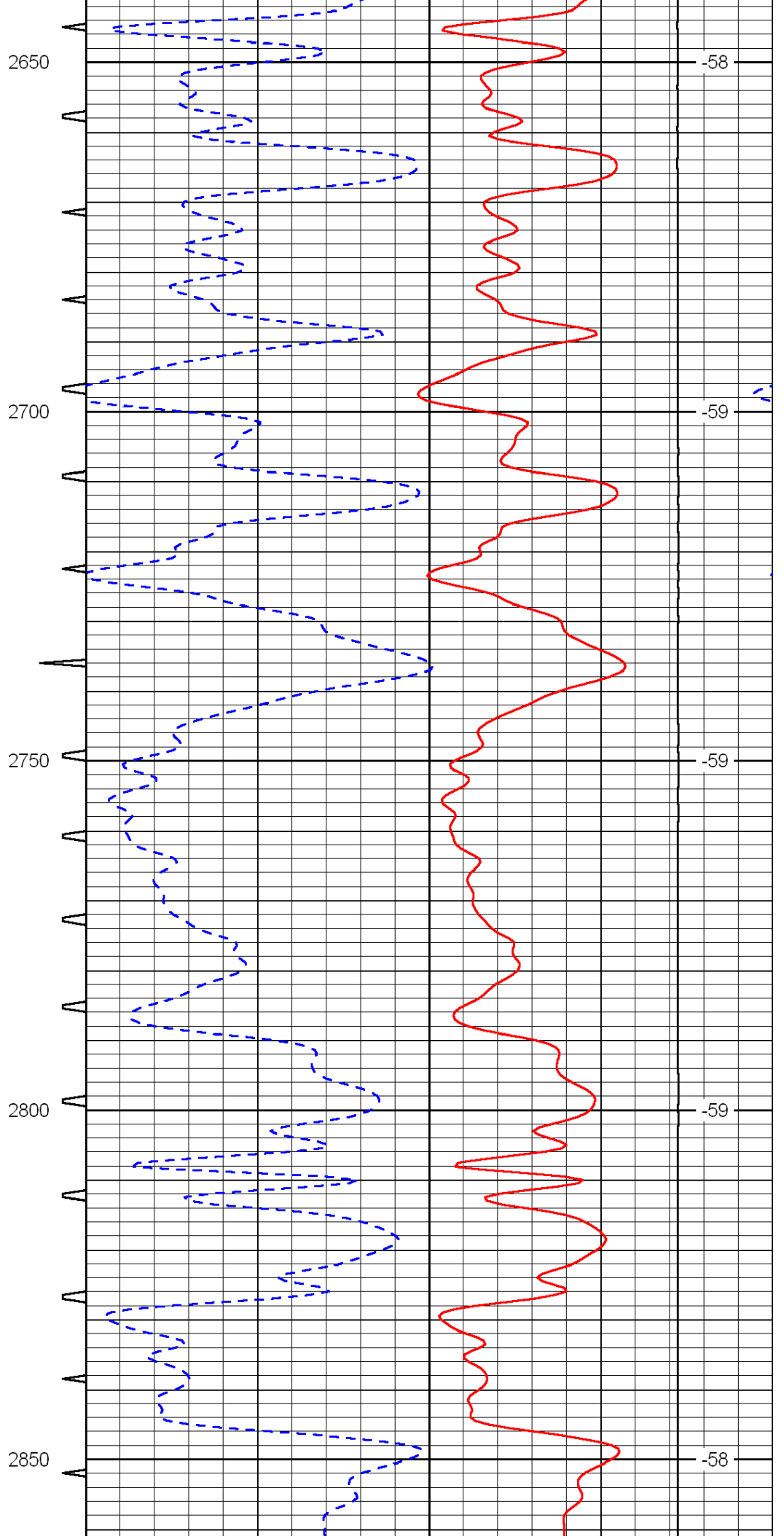
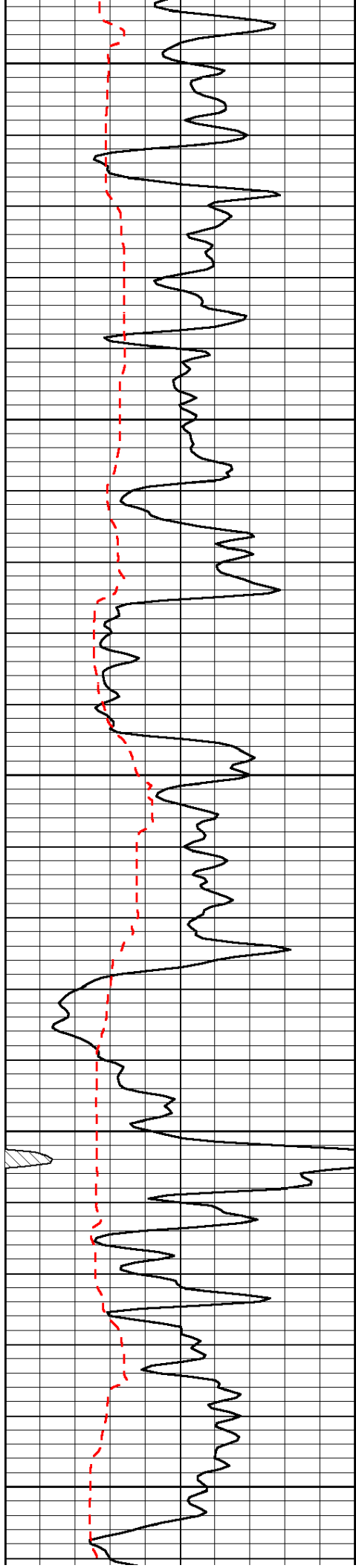


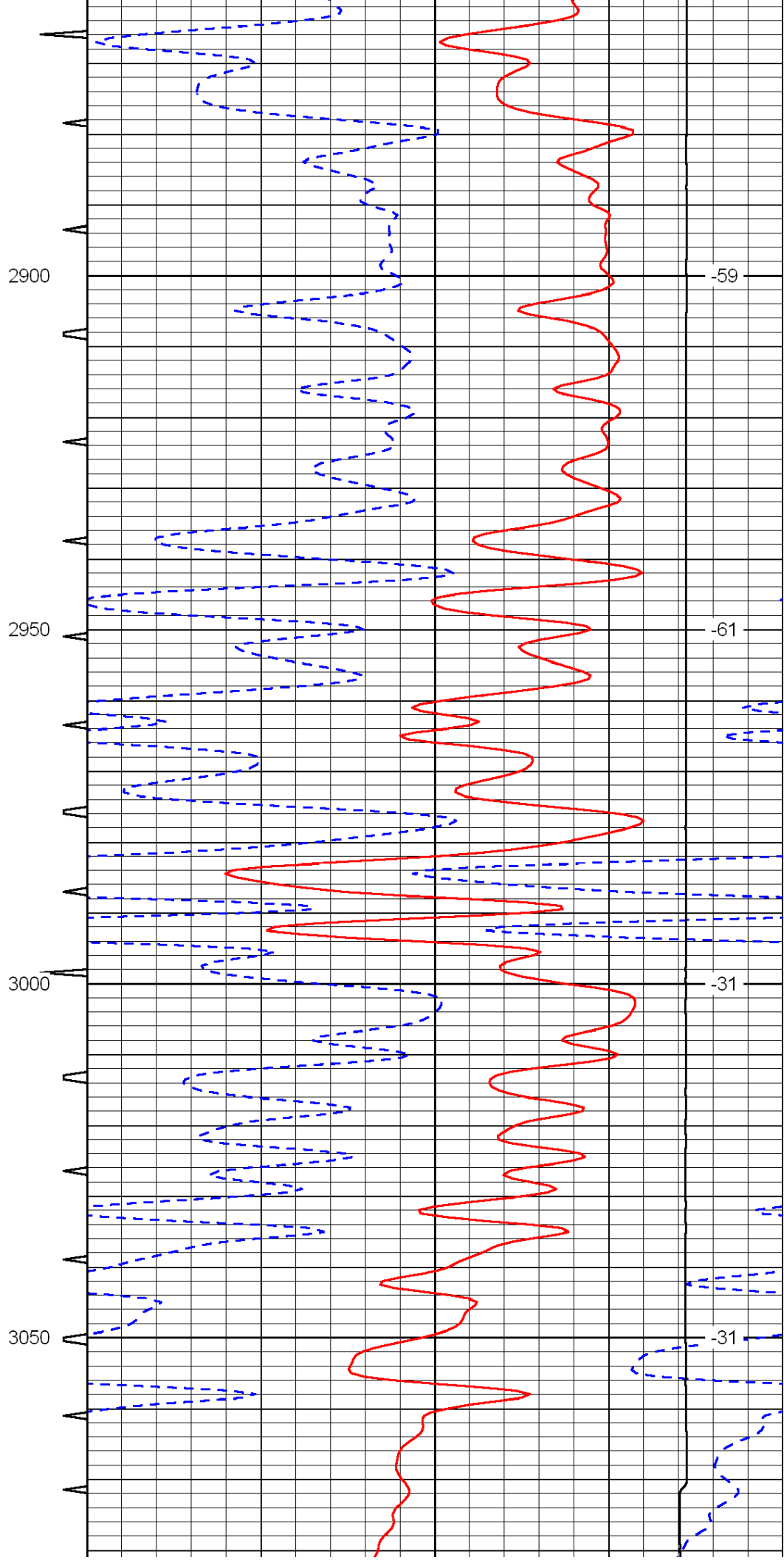
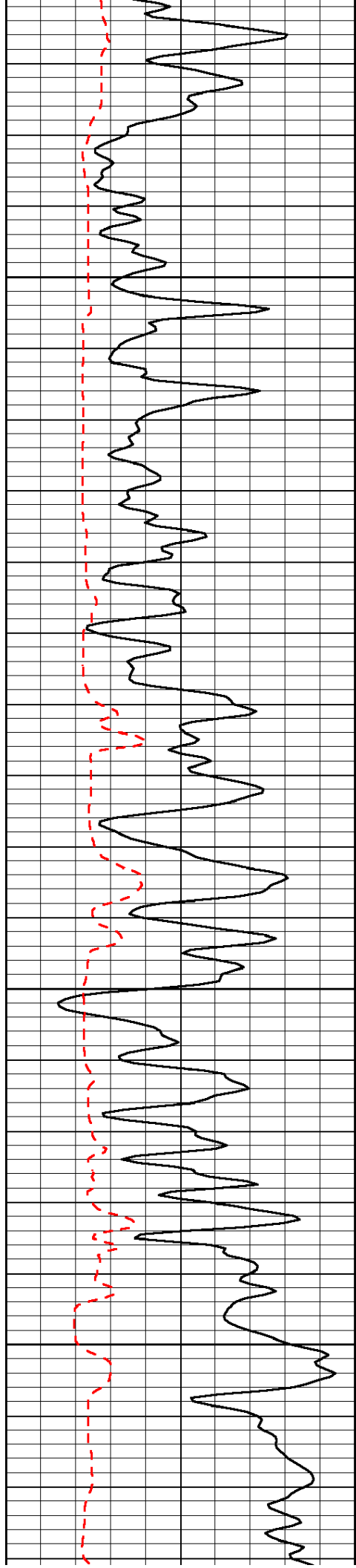


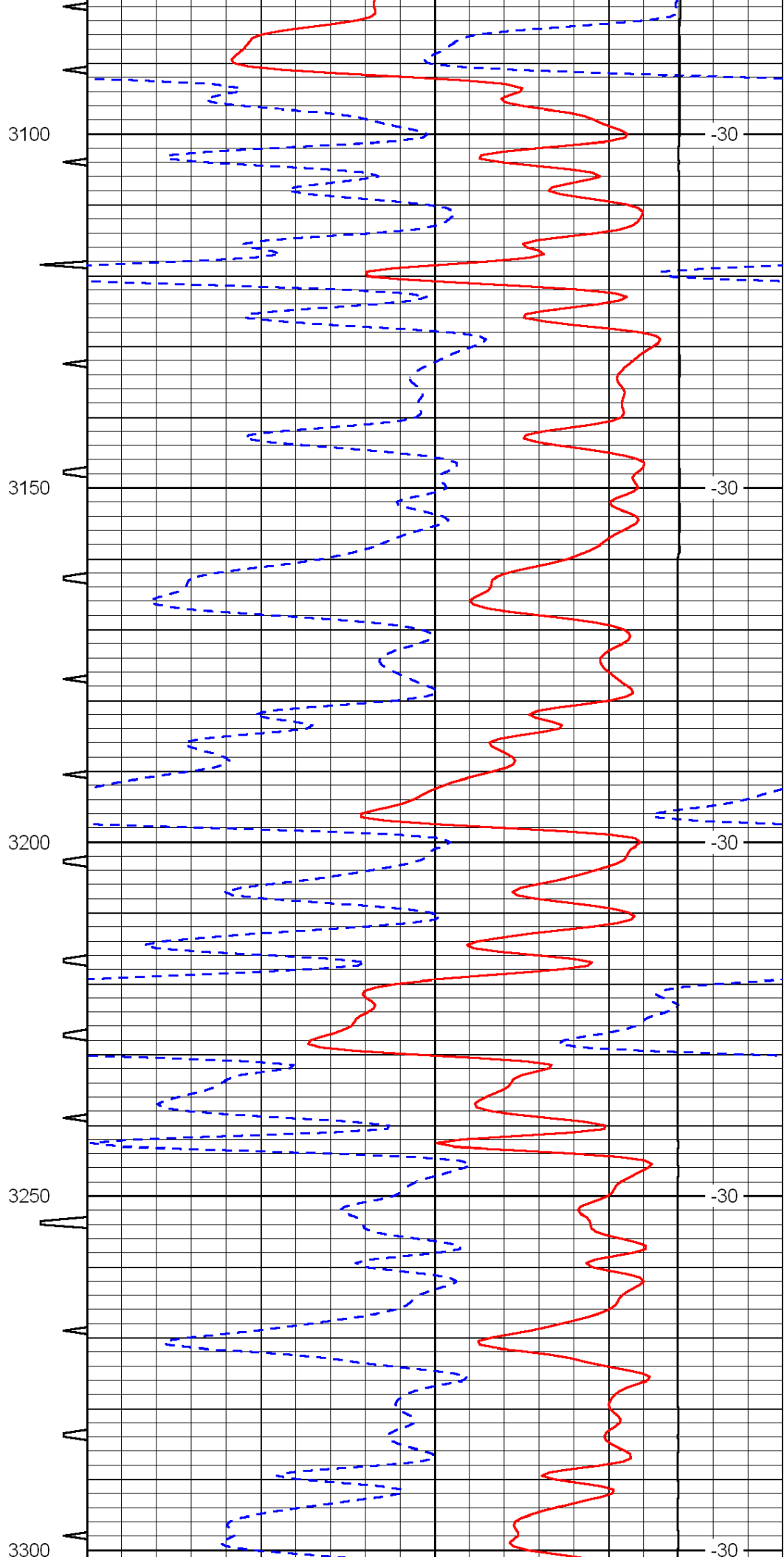
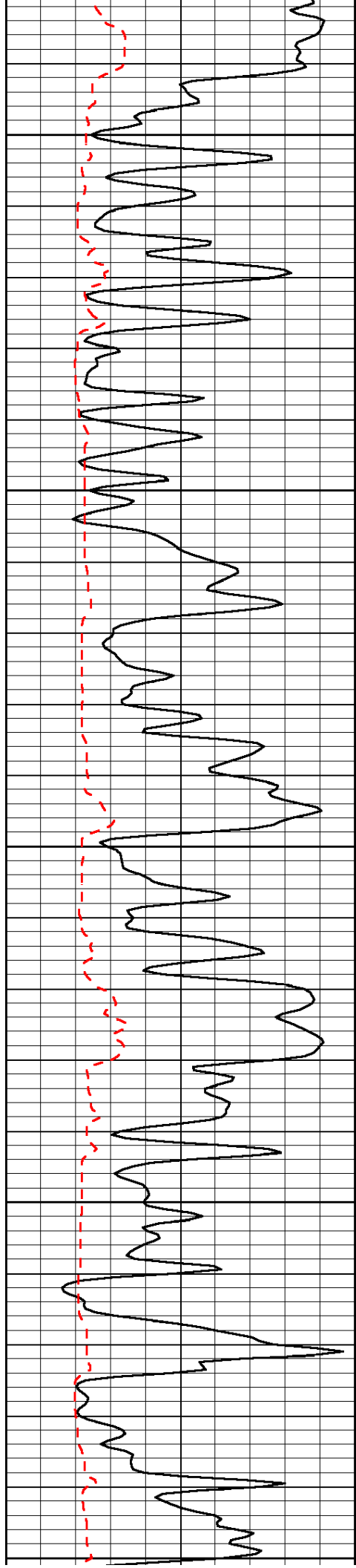


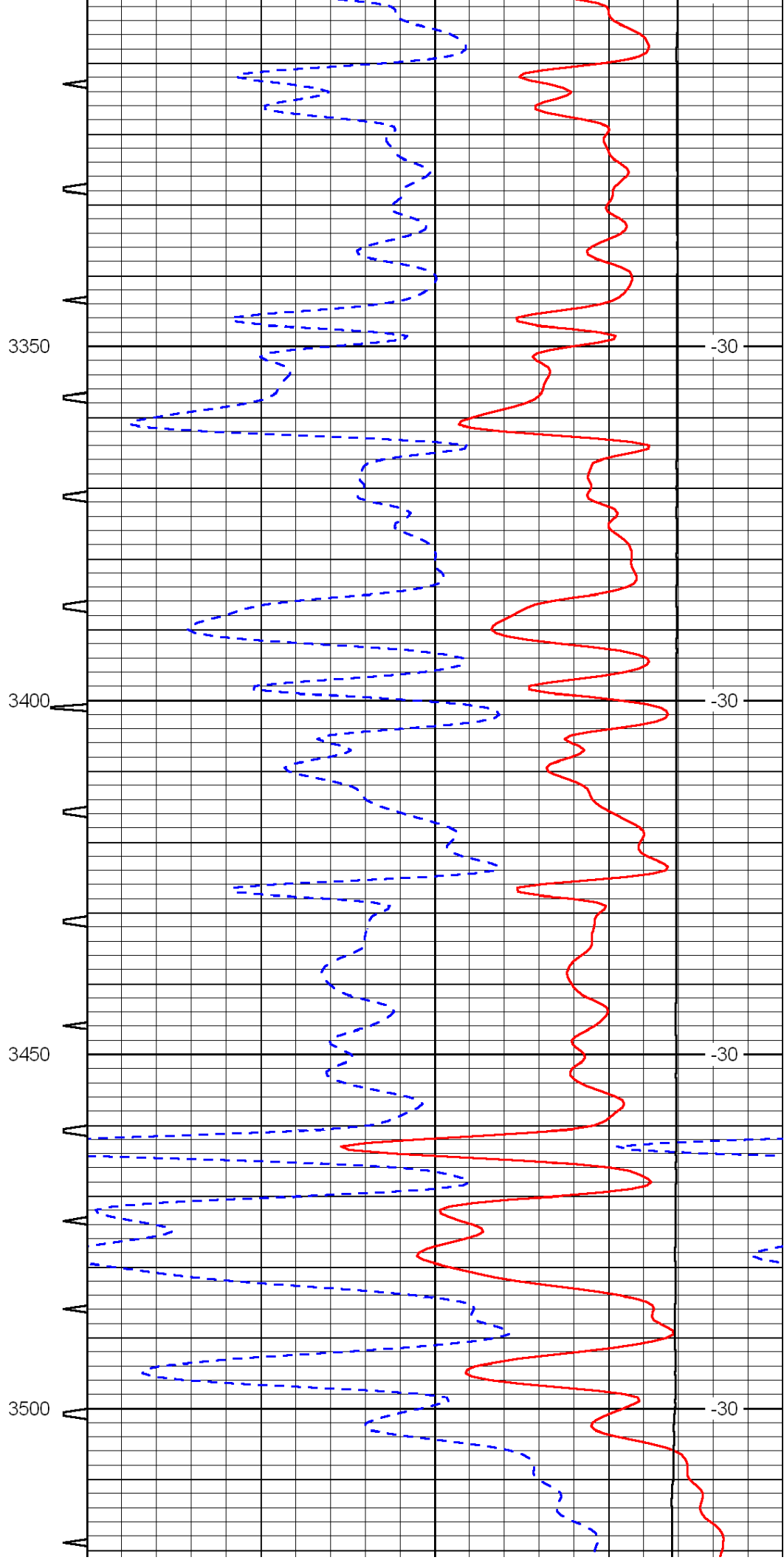
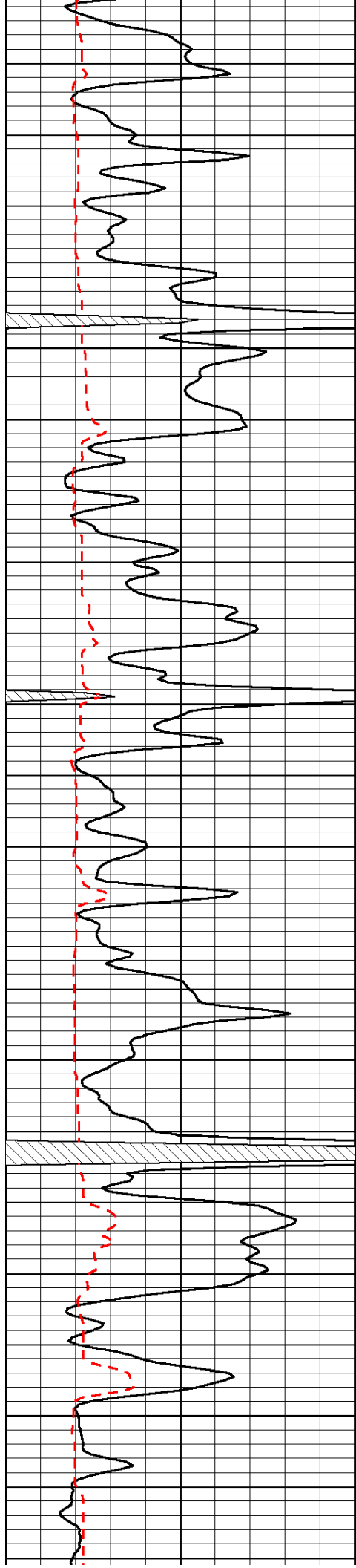


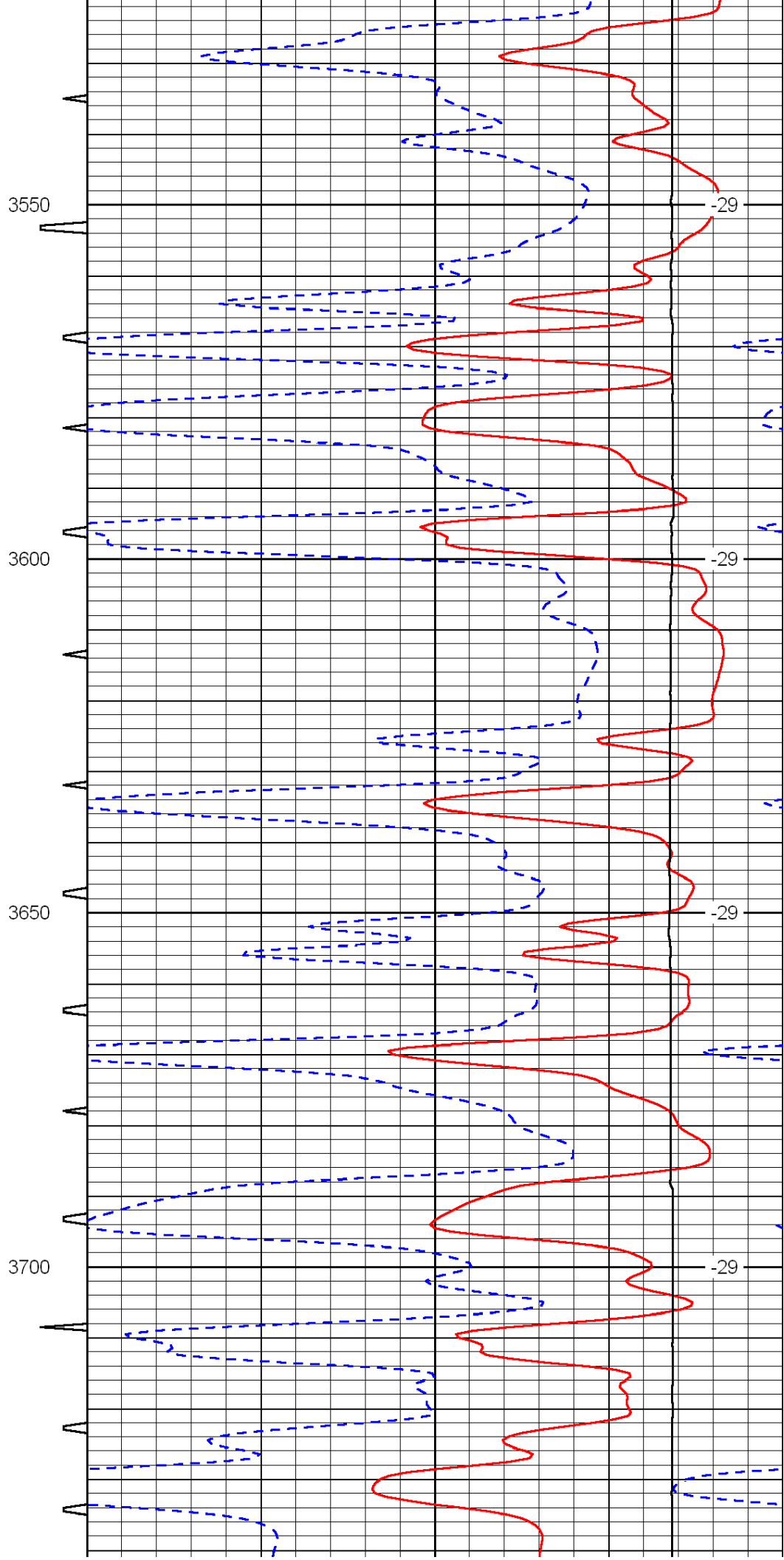
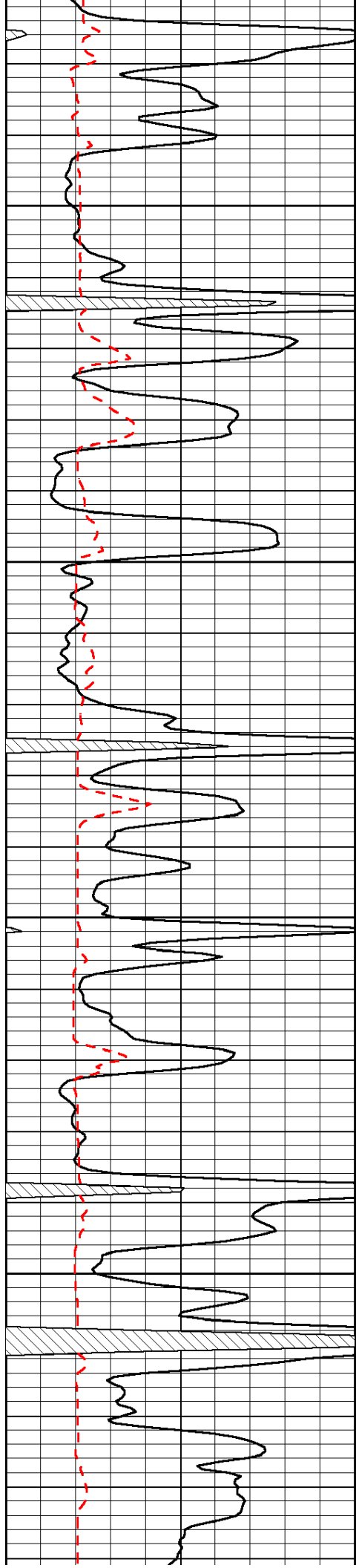


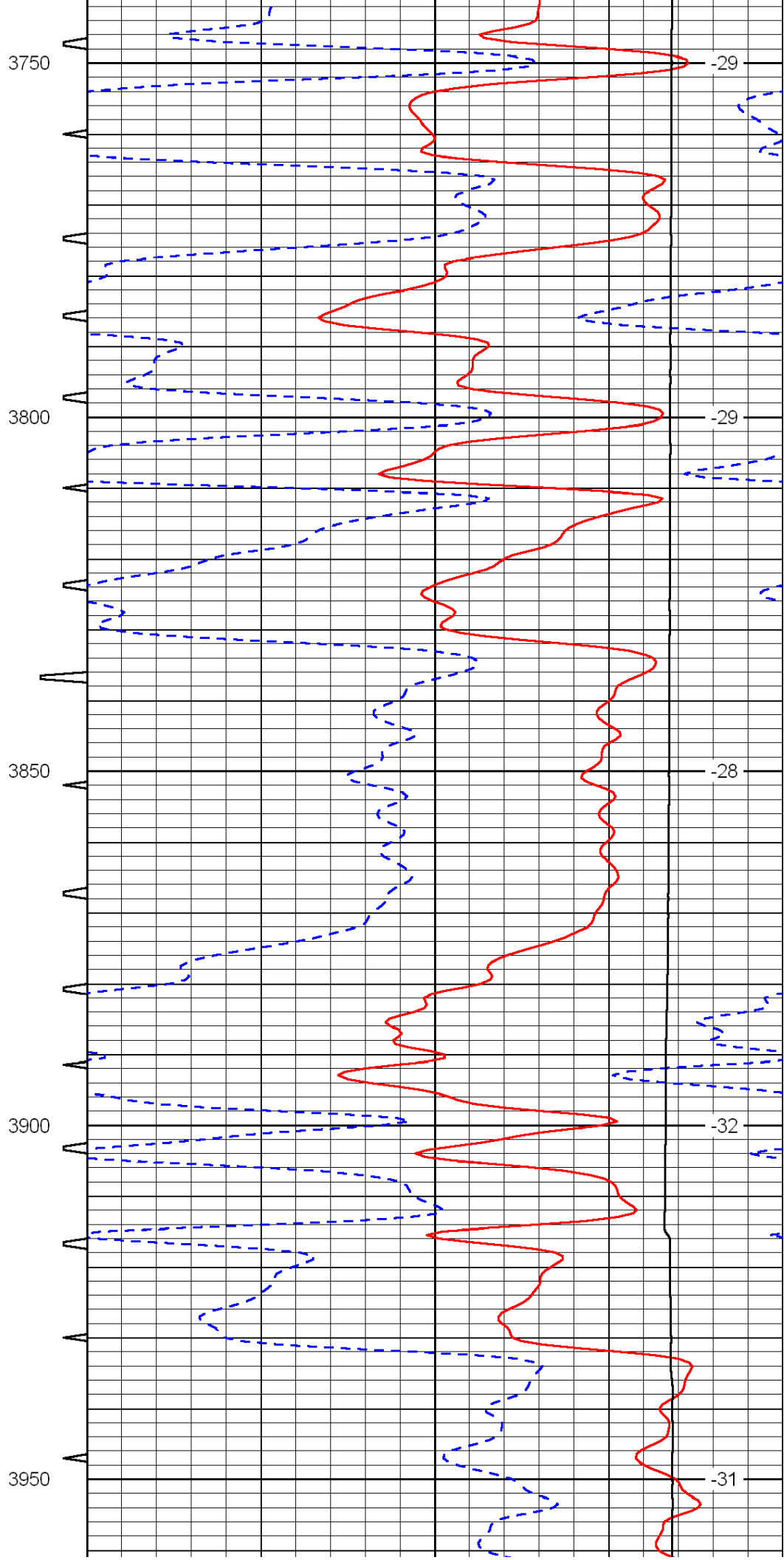
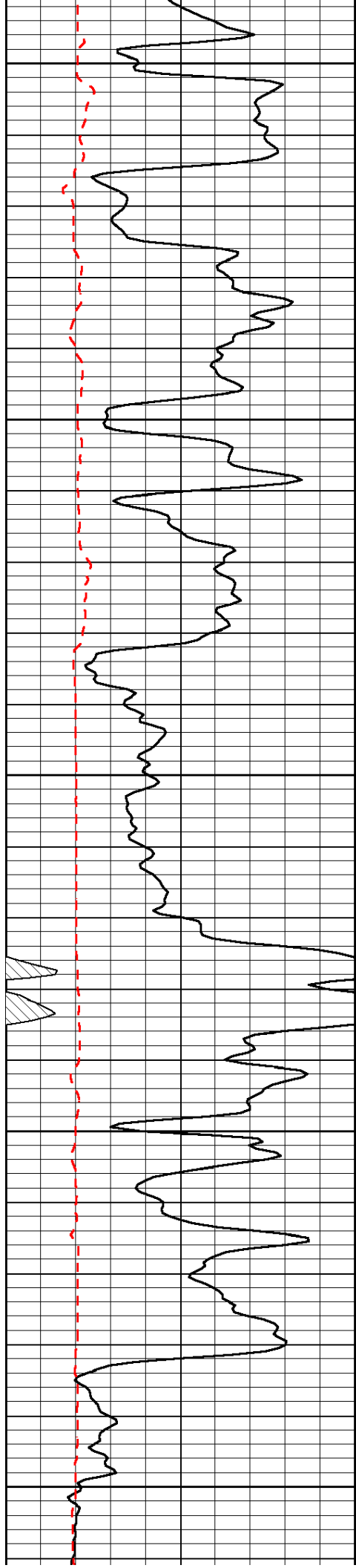


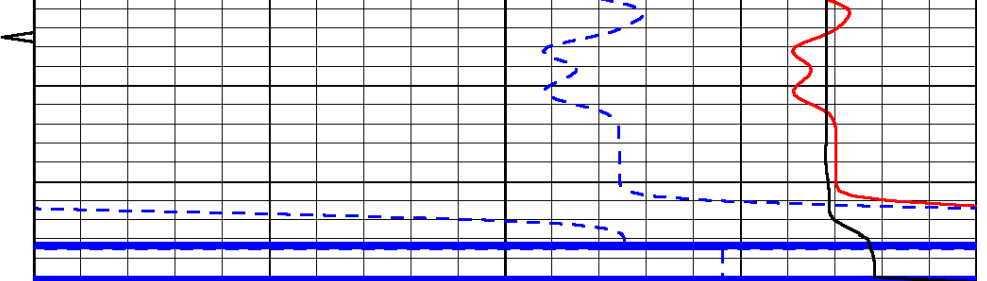
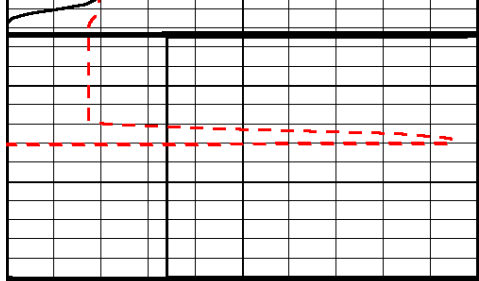












0	Gamma Ray	150	Sonic Int	140	Delta Time (usec/ft)	40
150	Gamma Ray	300	5	0	SPOR	-10
6	Caliper (GAPI)	16		15000	LTEN (lb)	0
						LSPD