



# Microresistivity Log

**DIGITAL LOG (785) 625-3858**

API No. 15-195-22692-00-00	Company <b>Cholla Production, LLC</b>	Location <b>NE NW NW SW 2530' FSL / 630' FWL</b>	Other Services CNL / CDL DIL / BHCS
	Well <b>Denison #1-10</b>		
	Field <b>Wakeeney</b>		
	County <b>Trego</b>	State <b>Kansas</b>	
	Sec: <b>10</b>	Twp: <b>11S</b>	Rge: <b>23W</b>

Permanent Datum	Ground Level	Elevation	2251
Log Measured From	Kelly Bushing	5	Ft. Above Perm. Datum
Drilling Measured From	Kelly Bushing		
Date	2/21/2011		
Run Number	Two		
Depth Driller	3979		
Depth Logger	3985		
Bottom Logged Interval	3984		
Top Log Interval	3000		
Casing Driller	8.625 @ 263		
Casing Logger	263		
Bit Size	7.875		
Type Fluid in Hole	Chemical		
Salinity, ppm CL	1900		
Density / Viscosity	9.1   48		
pH / Fluid Loss	8.5   8.0		
Source of Sample	Flowline		
Rm @ Meas. Temp	1.40 @ 50		
Rmf @ Meas. Temp	1.05 @ 50		
Rmc @ Meas. Temp	1.89 @ 50		
Source of Rmf / Rmc	Charts		
Rm @ BHT	0.60 @ 116		
Operating Rig Time	5 Hours		
Max Rec. Temp. F	116		
Equipment Number	4		
Location	Hays		
Recorded By	R. Barnhart		
Witnessed By	Bill Goff		

<<< Fold Here >>>

All interpretations are opinions based on inferences from electrical or other measurements and we cannot and do not guarantee the accuracy or correctness of any interpretation, and we shall not, except in the case of gross or willful negligence on our part, be liable or responsible for any loss, costs, damages, or expenses incurred or sustained by anyone resulting from any interpretation made by any of our officers, agents or employees. These interpretations are also subject to our general terms and conditions set out in our current Price Schedule.

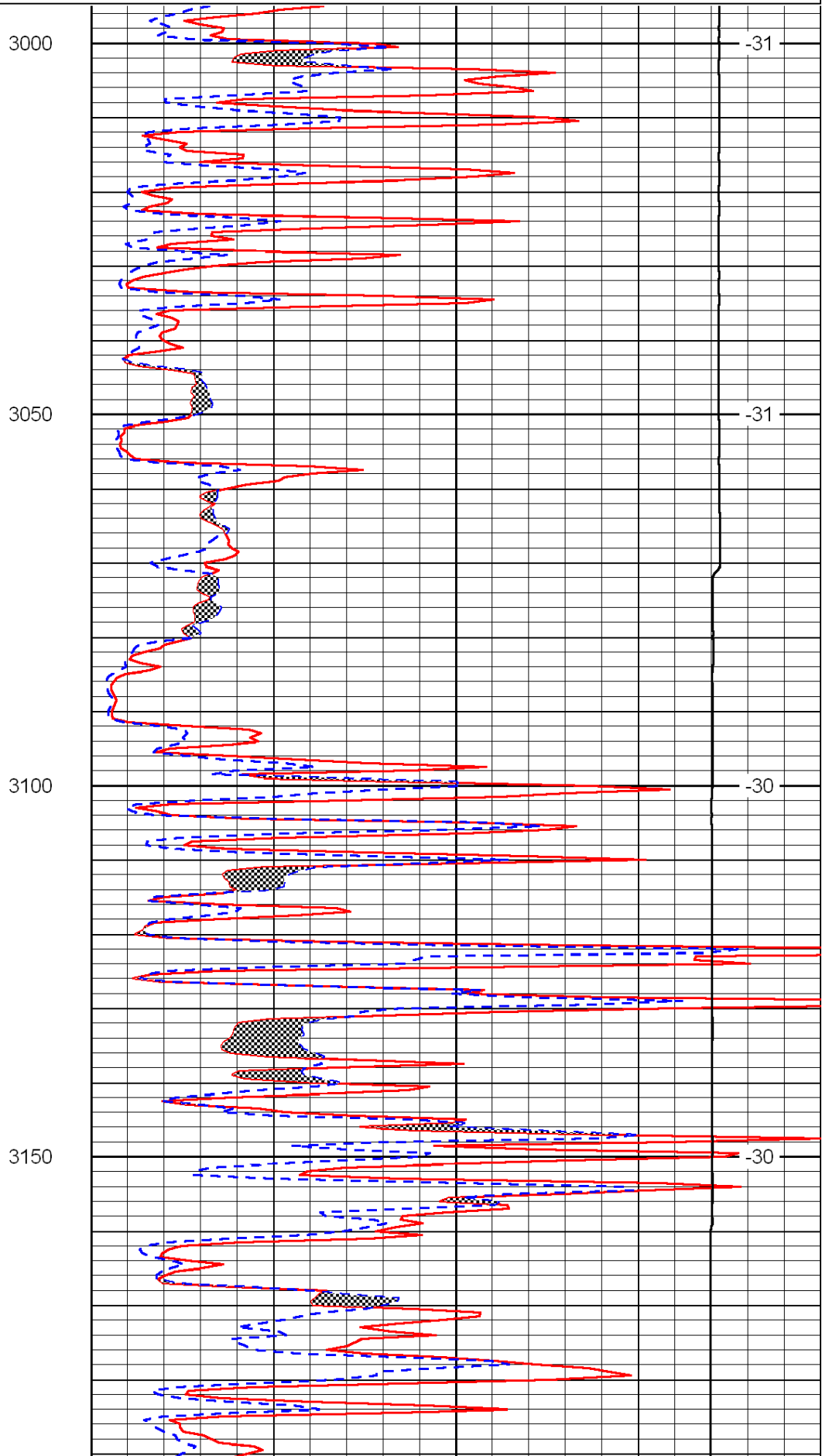
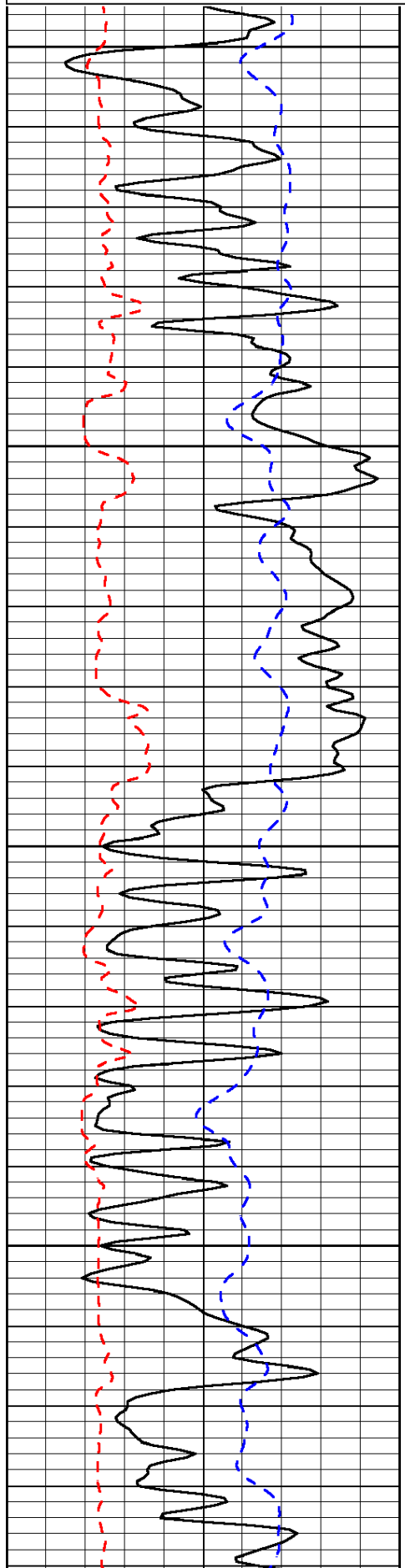
**Comments**

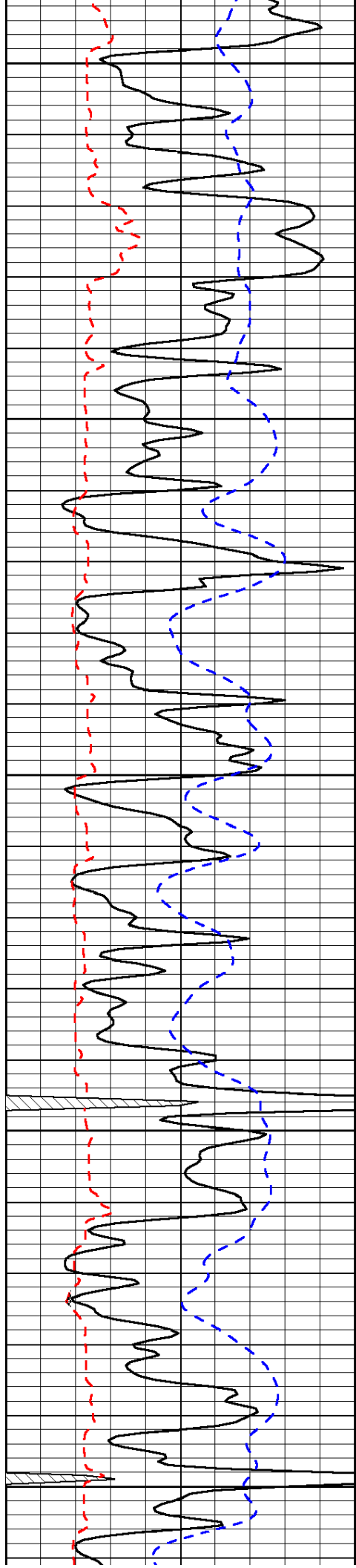
Thank you for using Log-Tech, Inc.  
(785) 625-3858  
  
Wakeeney, KS:  
6.5N, E into

0	Gamma Ray	150
6	Micro Log Caliper (GAPI)	16
-200	SP (mV)	0

0	Micro Inverse 1 X 1	40
0	Micro Normal 2"	40
15000	Line Weight	0

LSPD





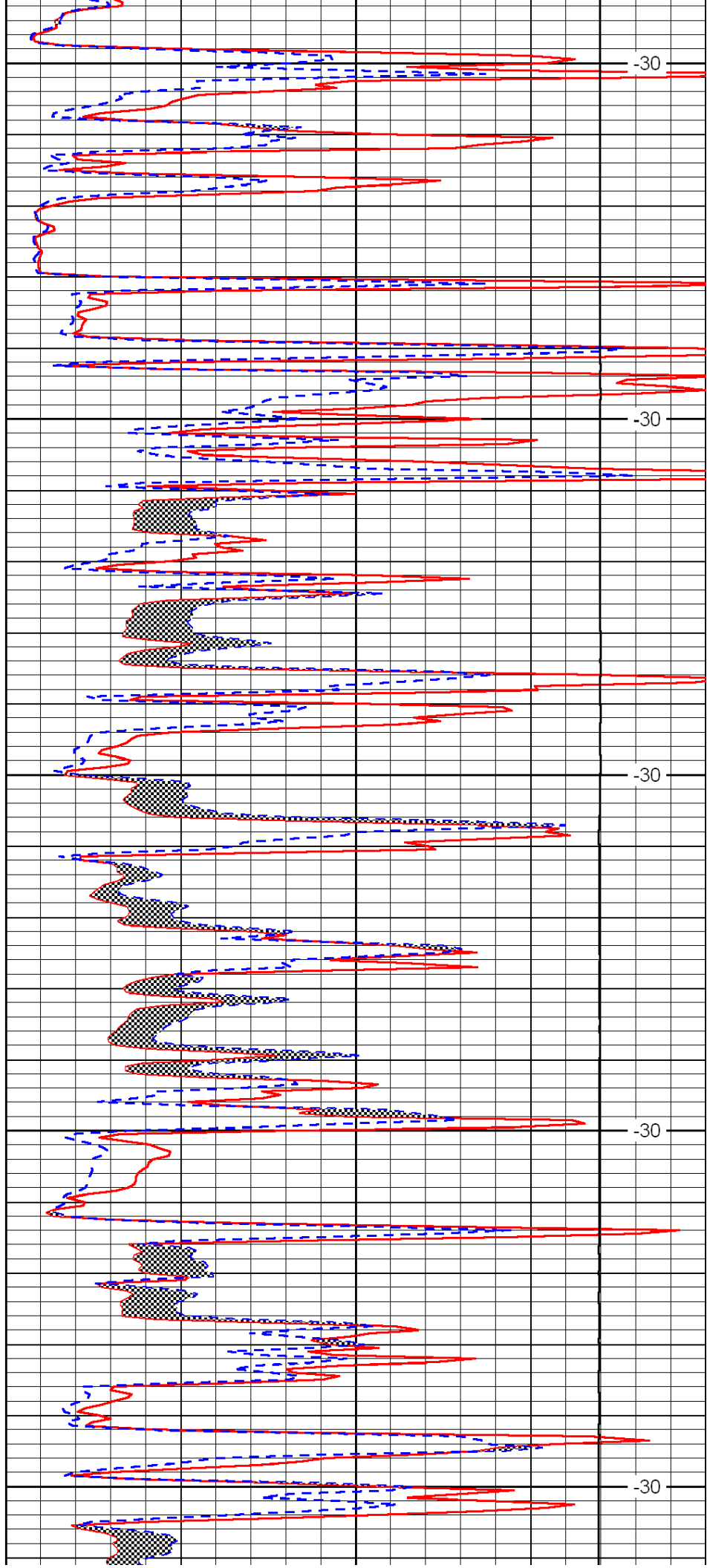
3200

3250

3300

3350

3400



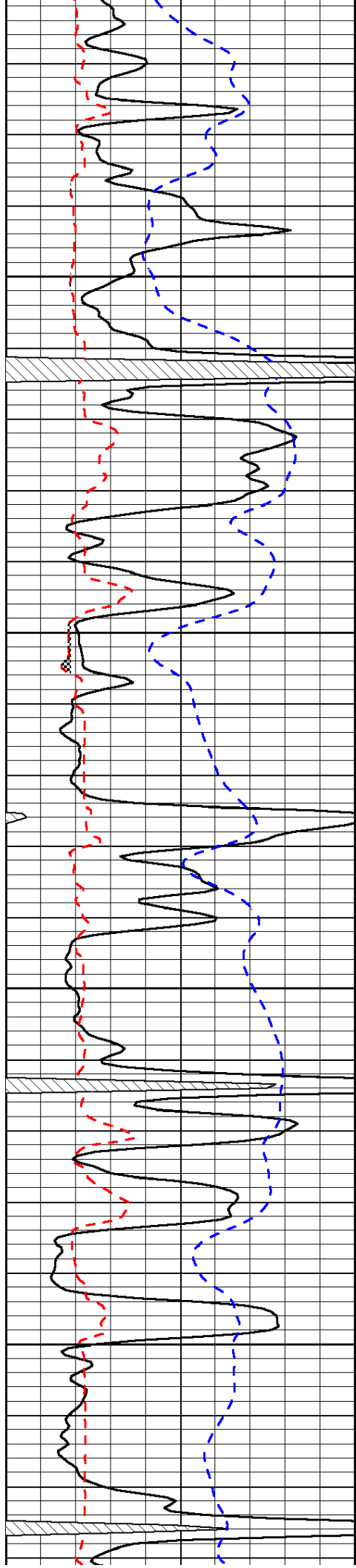
-30

-30

-30

-30

-30

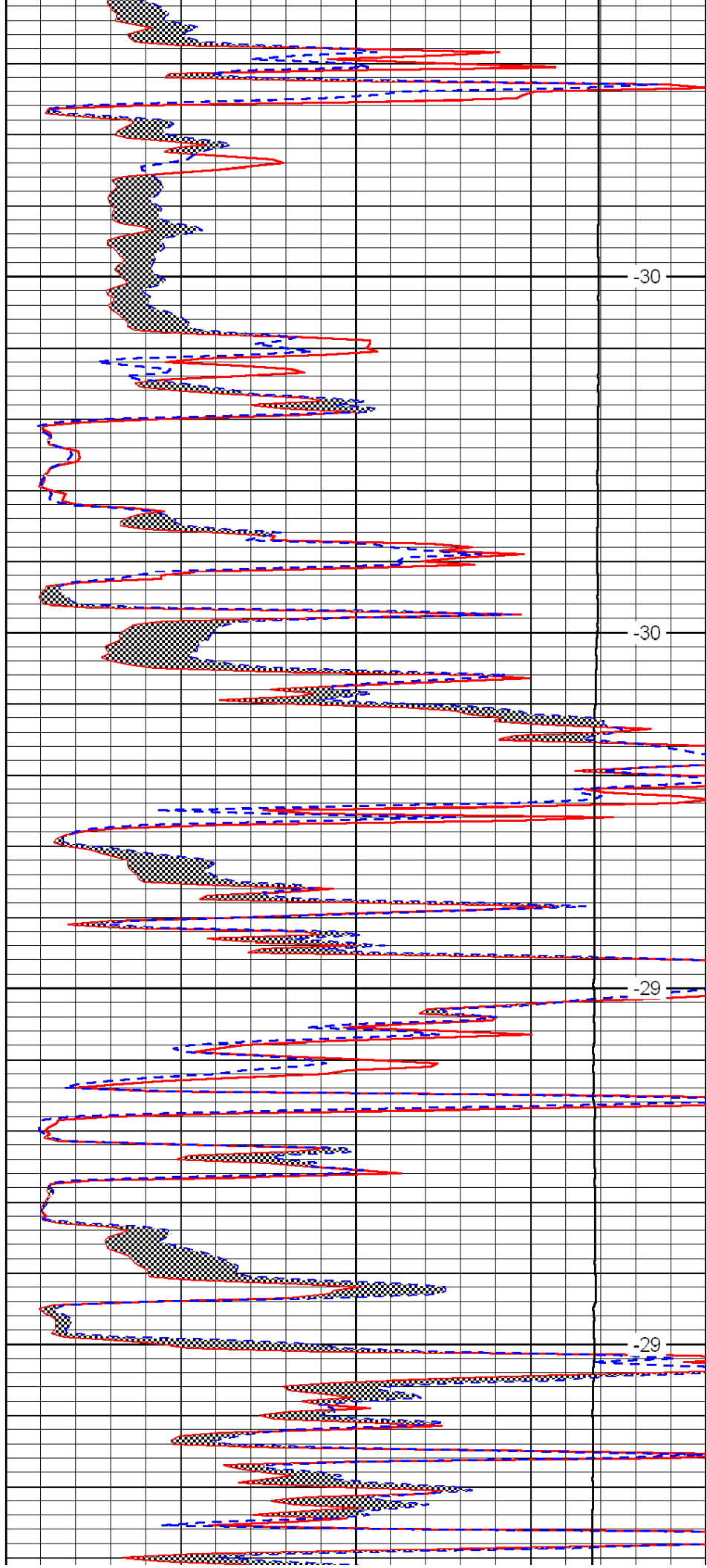


3450

3500

3550

3600

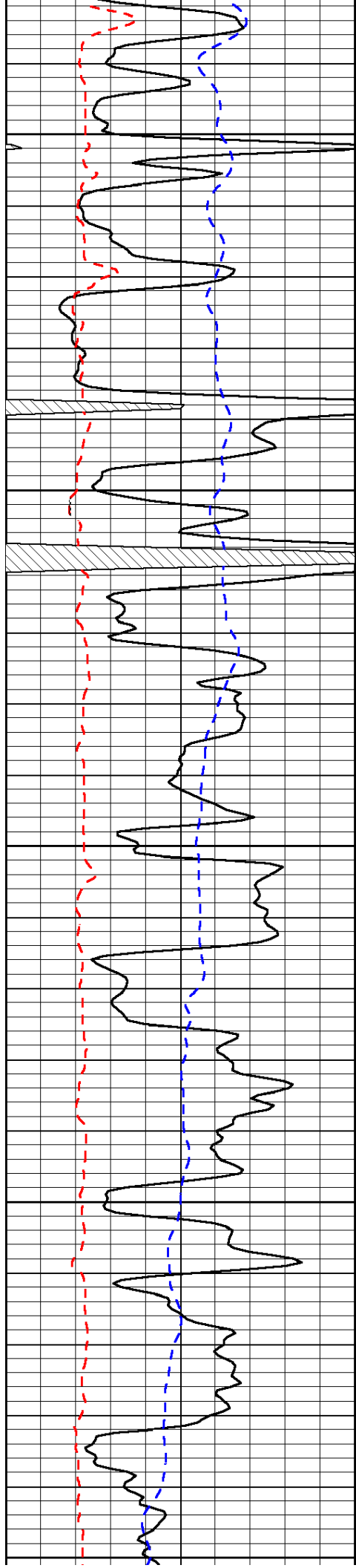


-30

-30

-29

-29



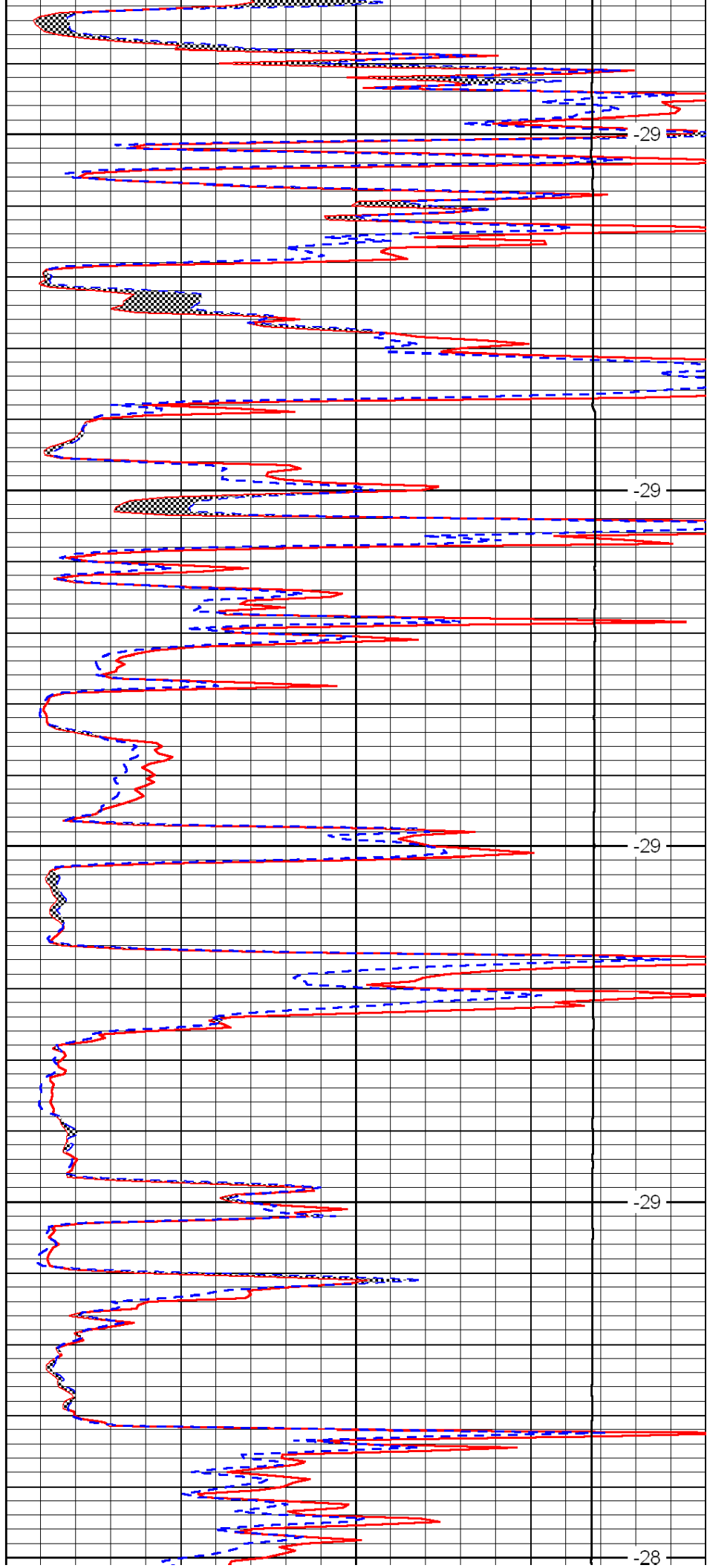
3650

3700

3750

3800

3850



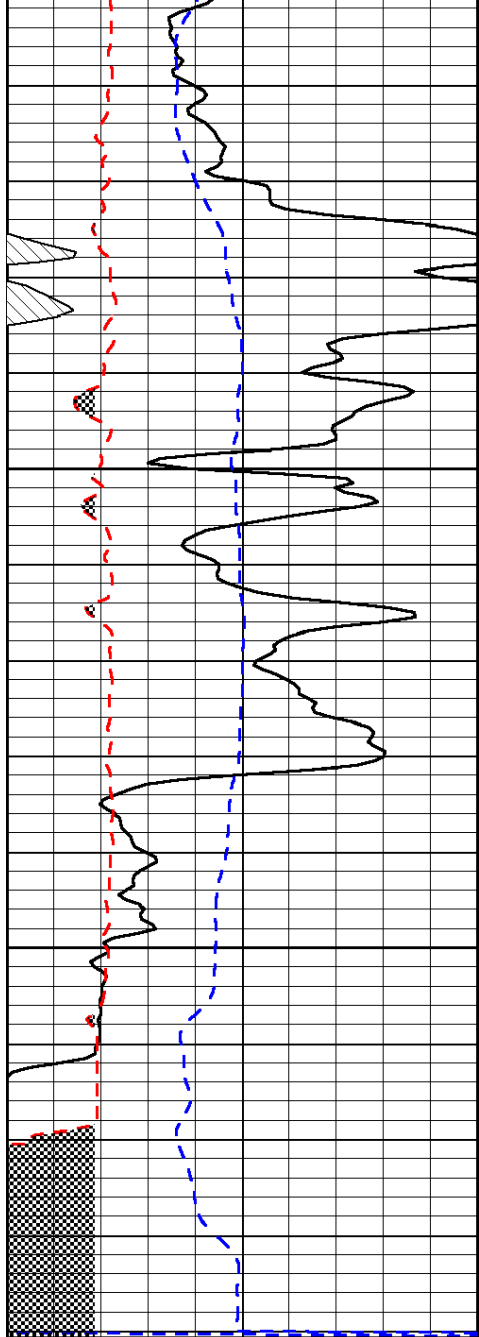
-29

-29

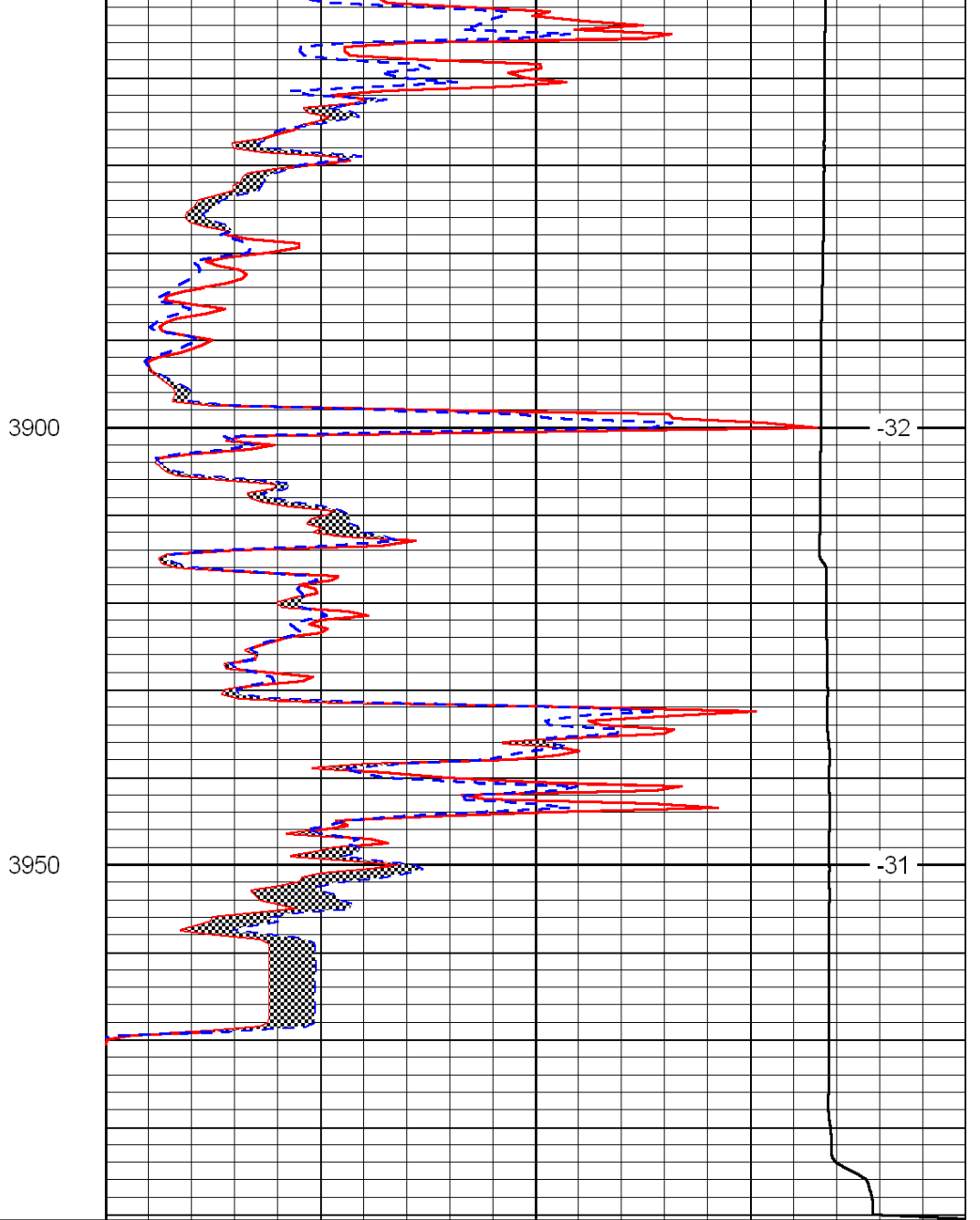
-29

-29

-28



0	Gamma Ray	150
6	Micro Log Caliper (GAPI)	16
-200	SP (mV)	0



0	Micro Inverse 1 X 1	40
0	Micro Normal 2''	40
15000	Line Weight	0

LSPD