



**Borehole Compensated
Sonic Log**

DIGITAL LOG (785) 625-3858

API No.	15-065-23,713-00-00
Company	Venture Resources, Inc.
Well	Billips No.2-16
Field	
County	Graham
State	Kansas
Location	SE NW NE 4390' FSL & 1710' FEL
Other Services	CNL/CDL DIL/FRAC
Permament Datum	Ground Level
Log Measured From	Kelly Bushing
Drilling Measured From	Kelly Bushing
Sec: 16	Twp: 8S
Rge: 21W	Elevation 2003
	7 Ft. Above Perm. Datum
	K.B. 2010
	D.F. 2003
	G.L. 2003

Date	2/7/2011
Run Number	Two
Type Log	BHC Sonic
Depth Driller	3700
Depth Logger	3696
Bottom Logged Interval	3685
Top Logged Interval	250
Type Fluid In Hole	Chemical
Salinity, PPM CL	2,500
Density	9.5
Level	Full
Max. Rec. Temp. F	115
Operating Rig Time	4 Hours
Equipment -- Location	17 Hays
Recorded By	C. Desaire
Witnessed By	Greg Mackey

Borehole Record				Casing Record			
Run No.	Bit	From	To	Size	Wgt.	From	To
1	12.25	00	265	8.625	24#	00	265
2	7.875	265	3700				

<<< Fold Here >>>

All interpretations are opinions based on inferences from electrical or other measurements and we cannot and do not guarantee the accuracy or correctness of any interpretation, and we shall not, except in the case of gross or willful negligence on our part, be liable or responsible for any loss, costs, damages, or expenses incurred or sustained by anyone resulting from any interpretation made by any of our officers, agents or employees. These interpretations are also subject to our general terms and conditions set out in our current Price Schedule.

Comments

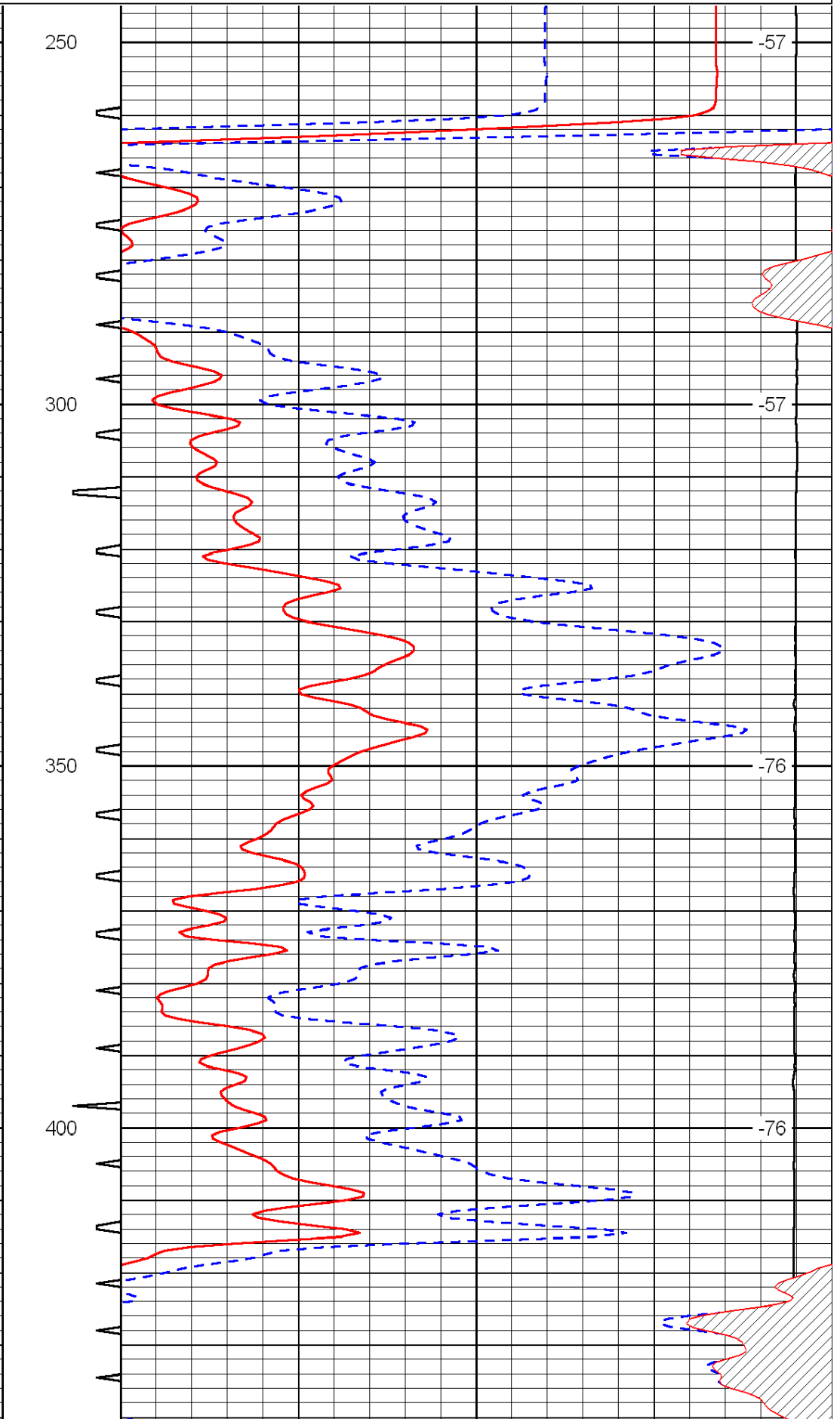
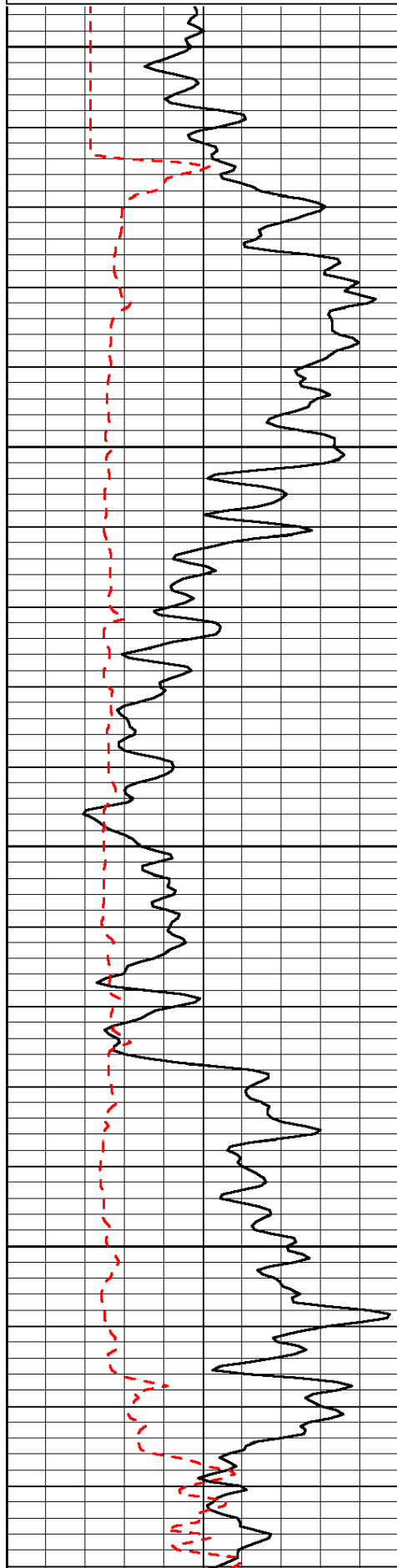
Thank you for using Log-Tech, Inc.
(785) 625-3858

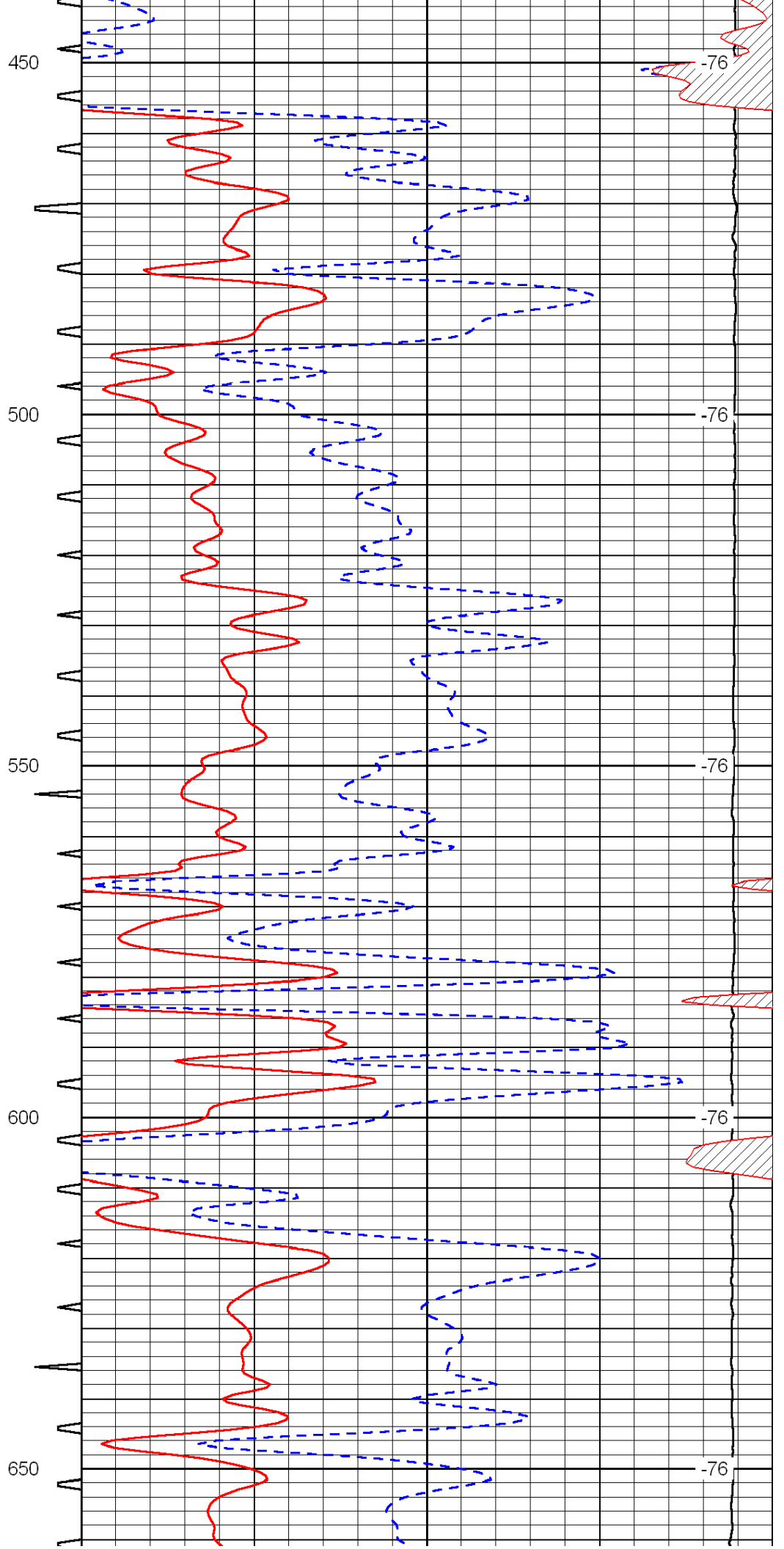
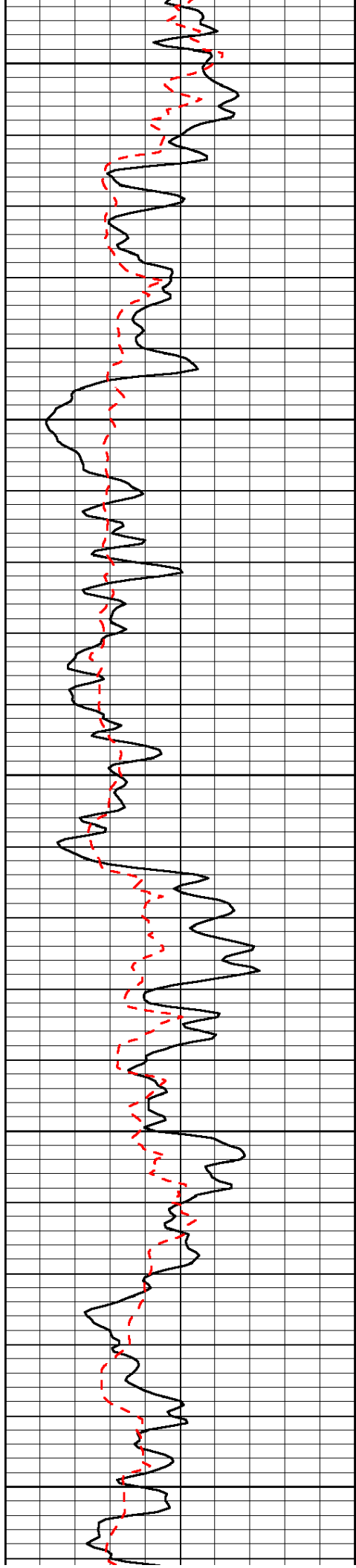
Bogue, 1 E, N Into

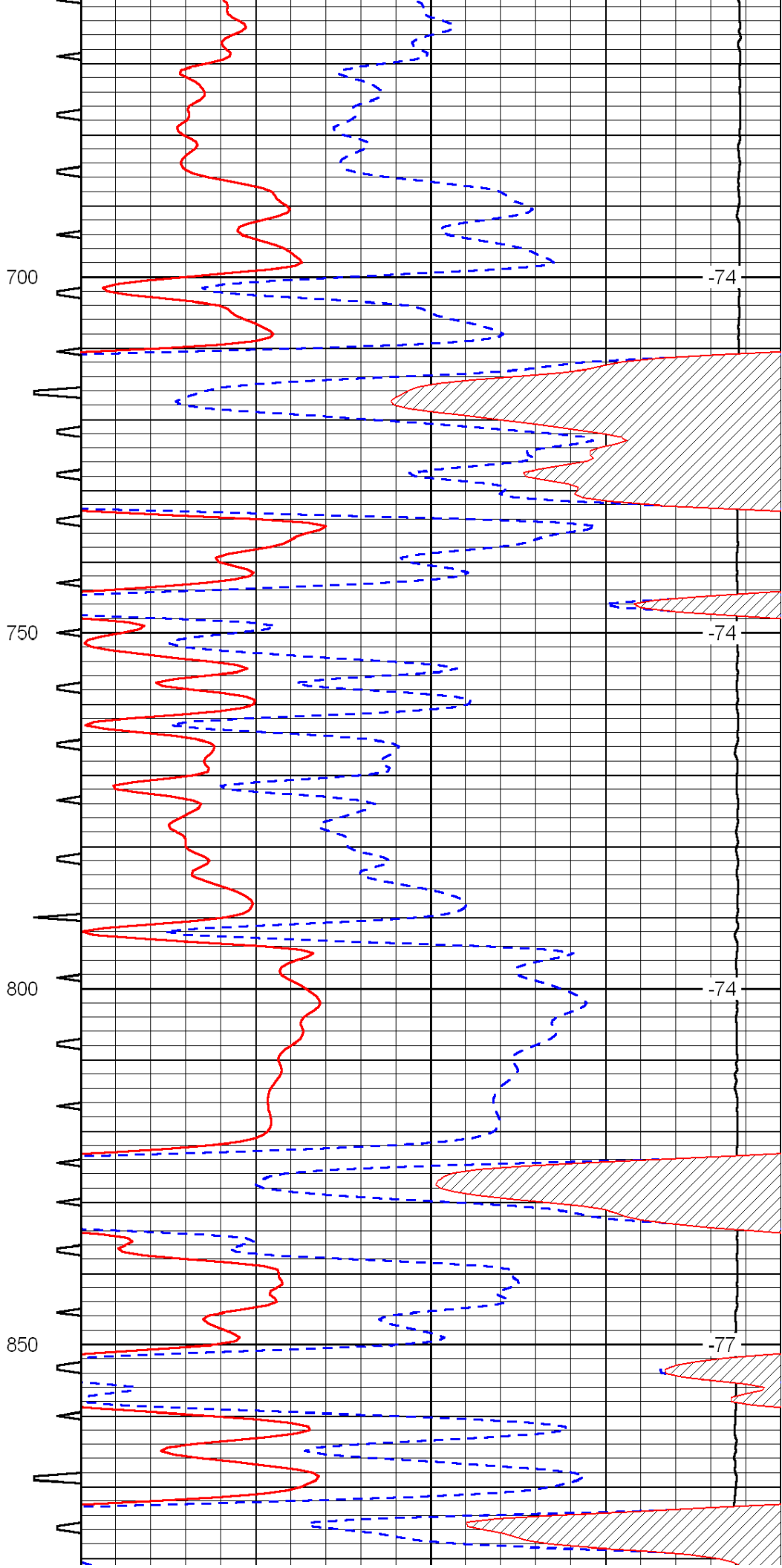
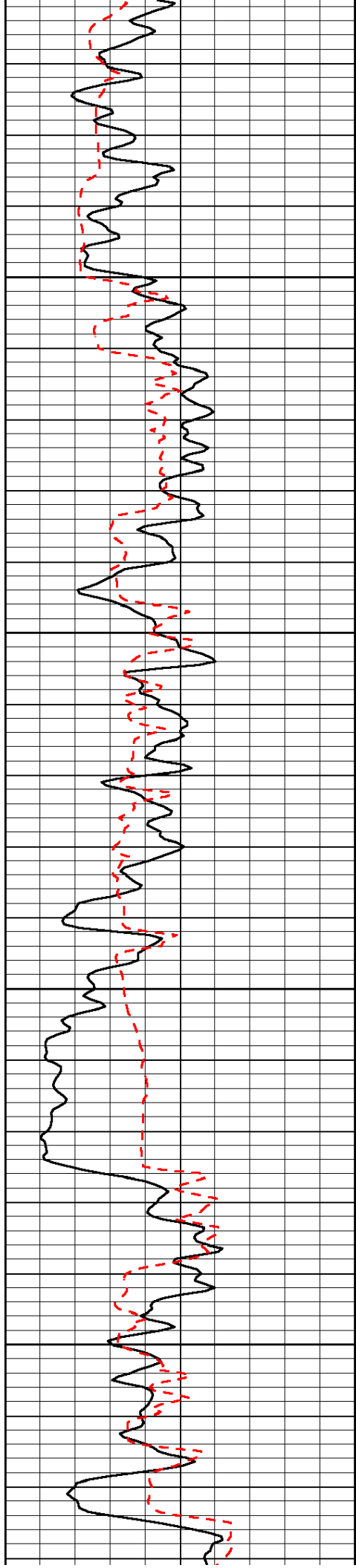
Database File: c:\warrior\data\venture_billips no.2-16\venthd.db
 Dataset Pathname: dil/ventstk
 Presentation Format: sonic
 Dataset Creation: Mon Feb 07 20:12:08 2011
 Charted by: Depth in Feet scaled 1:240

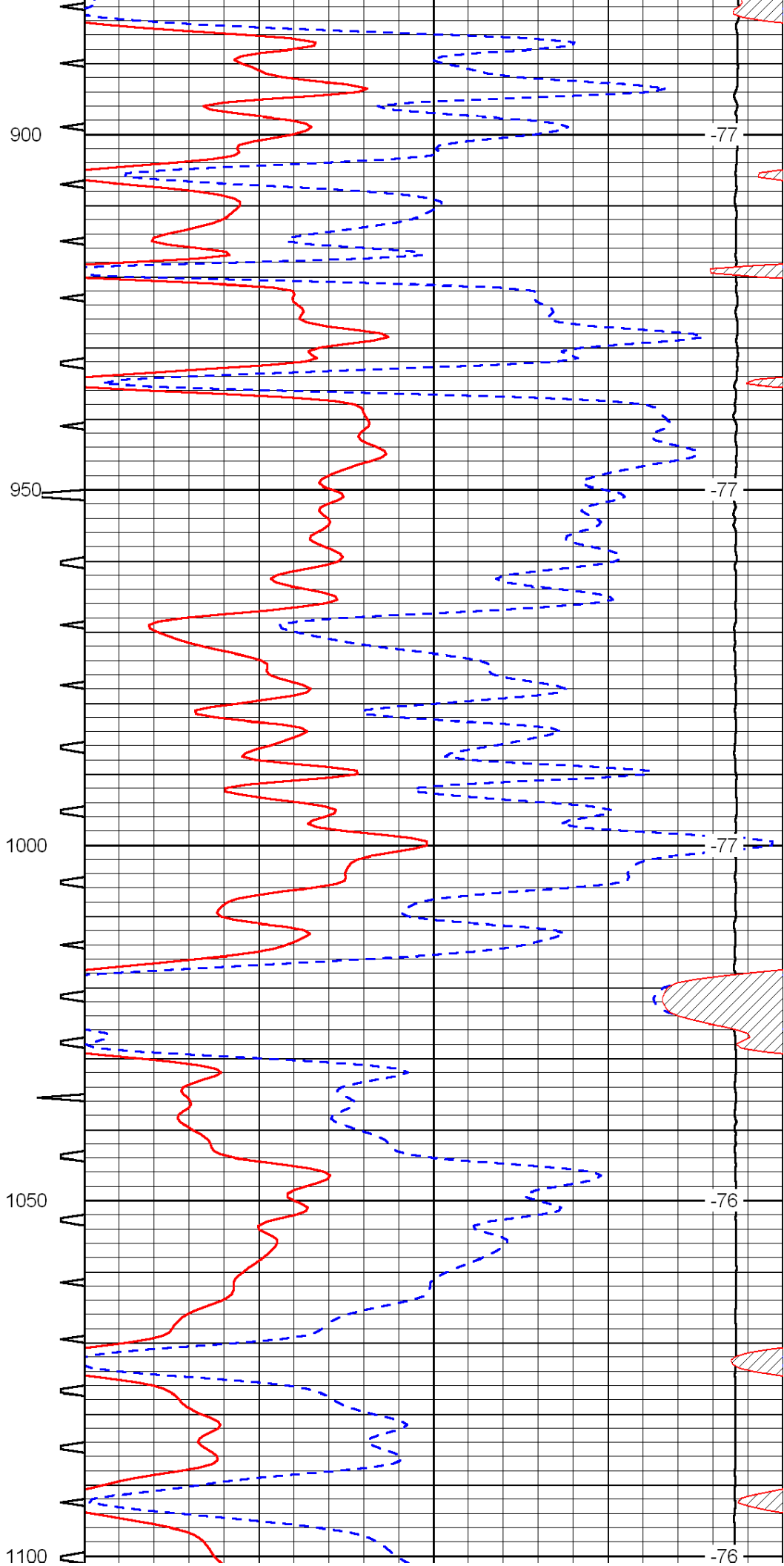
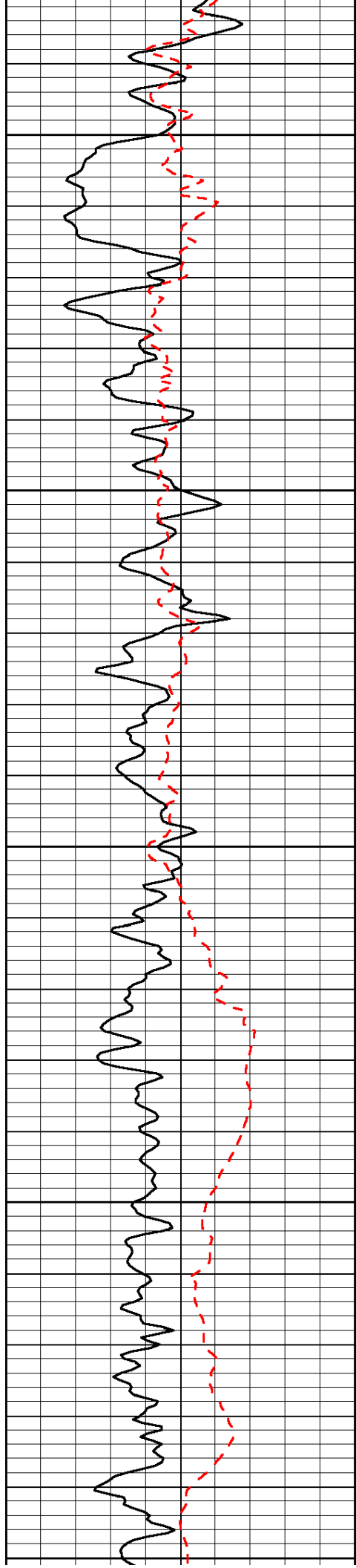
0	Gamma Ray	150	Sonic Int	140	Delta Time (usec/ft)	40
150	Gamma Ray	300	5	0	SPOR	-10
6	Caliper (GAPI)	16		15000	LTEN (lb)	0

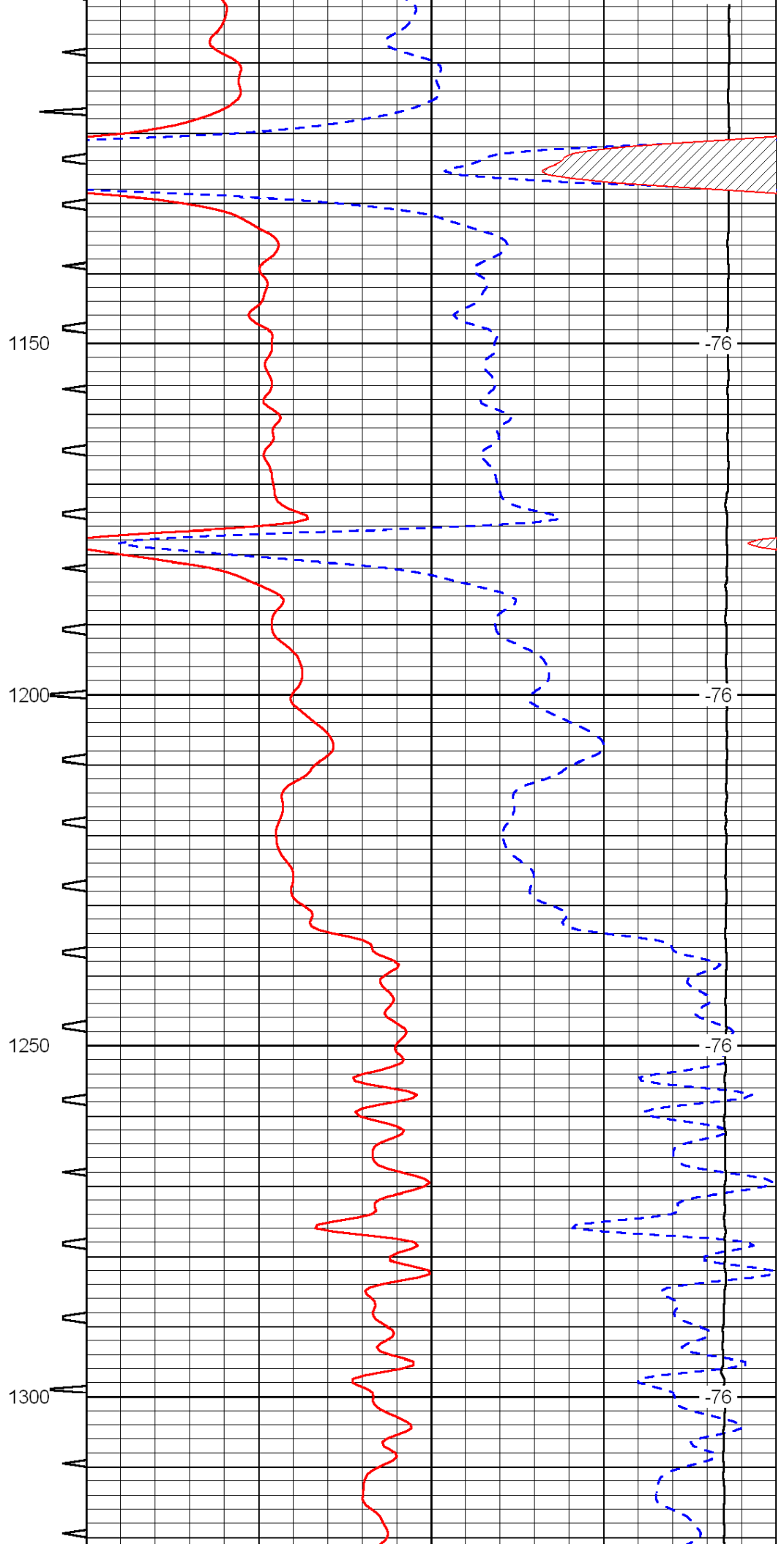
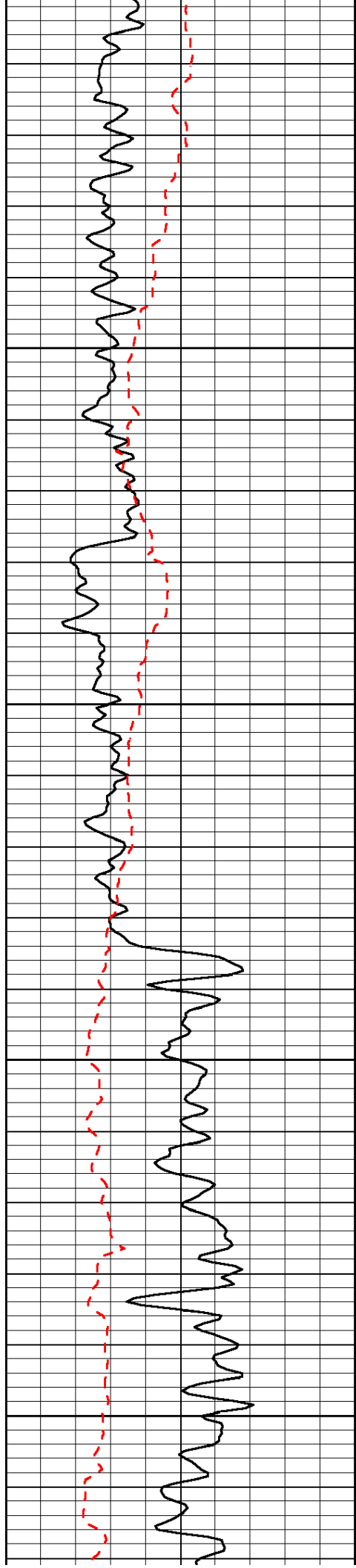
LSPD

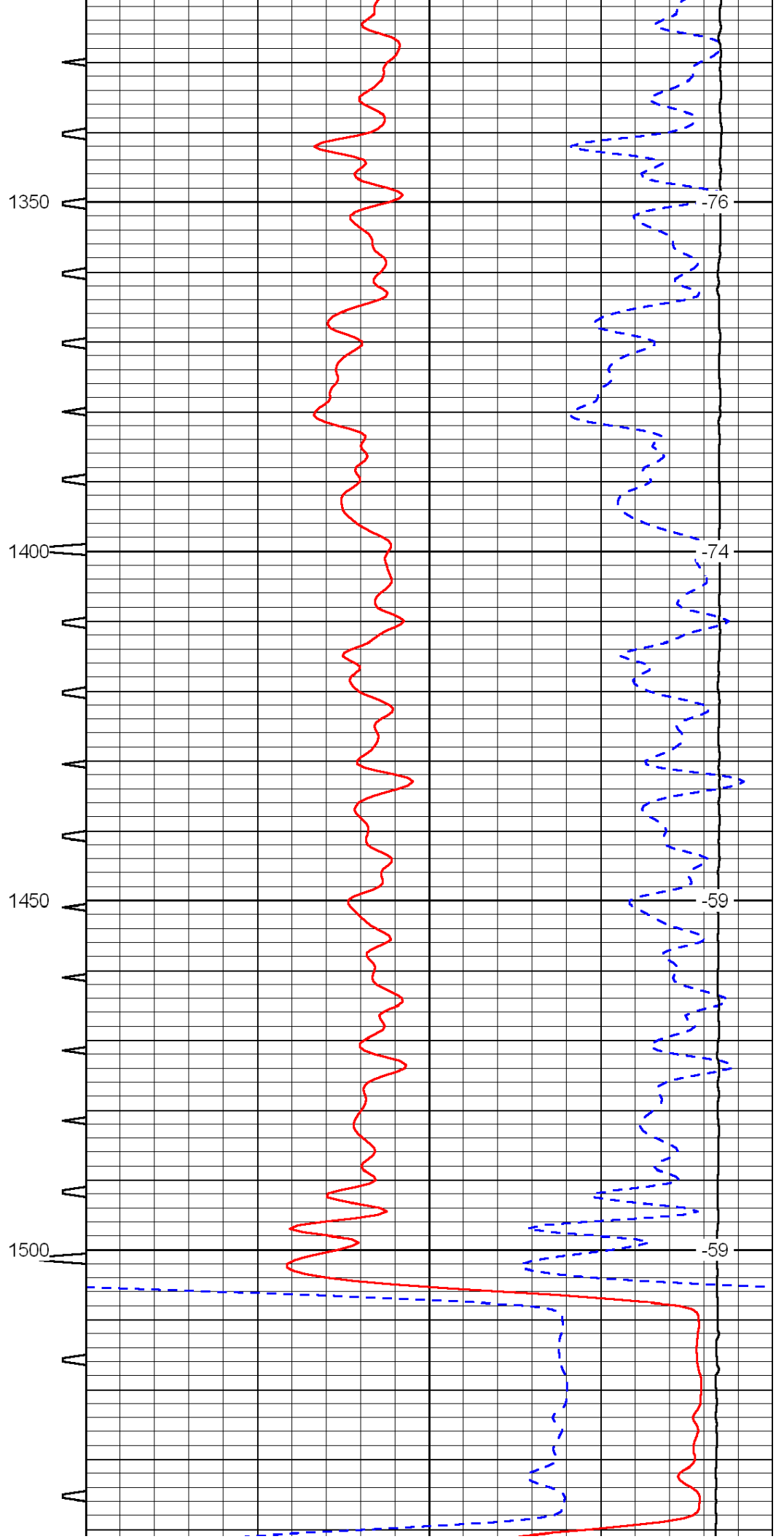
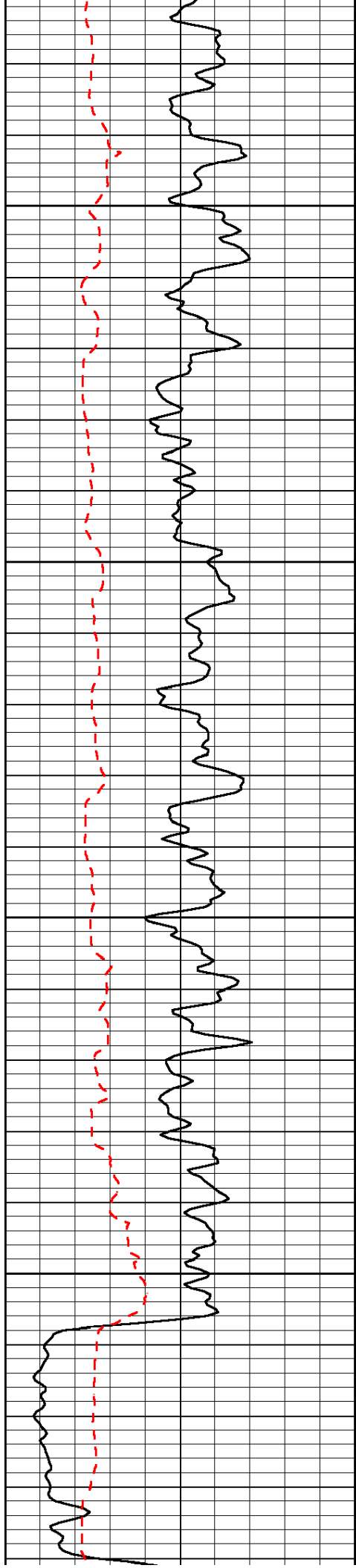


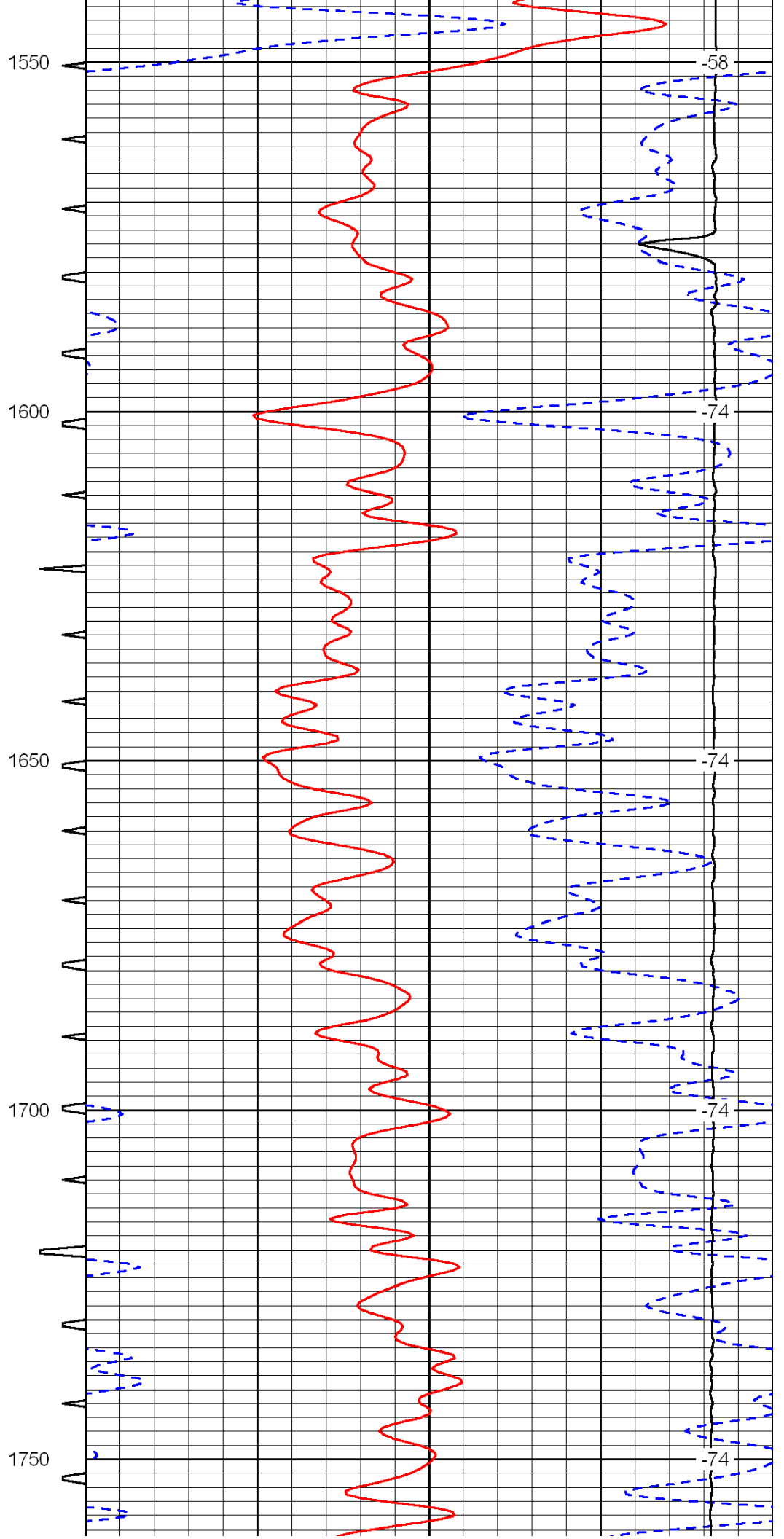
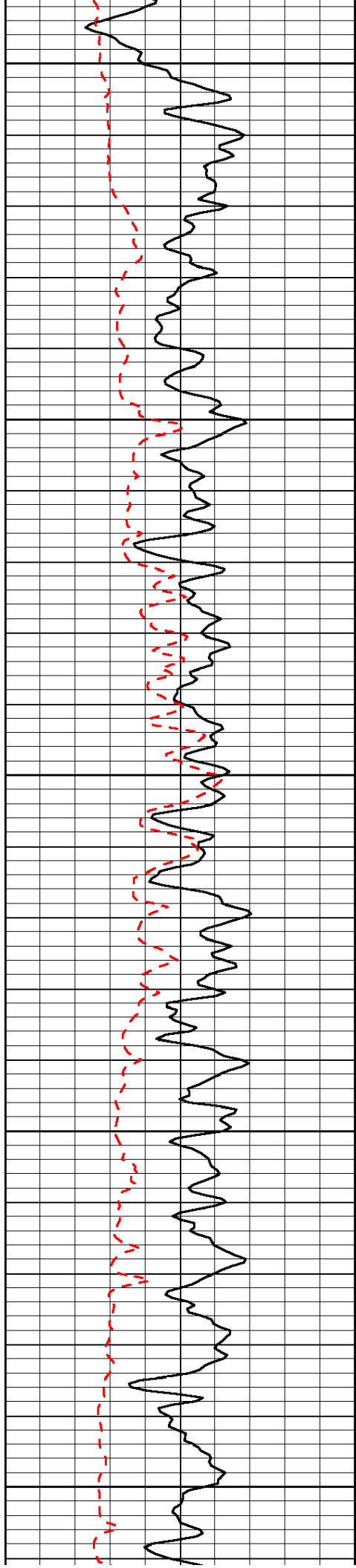


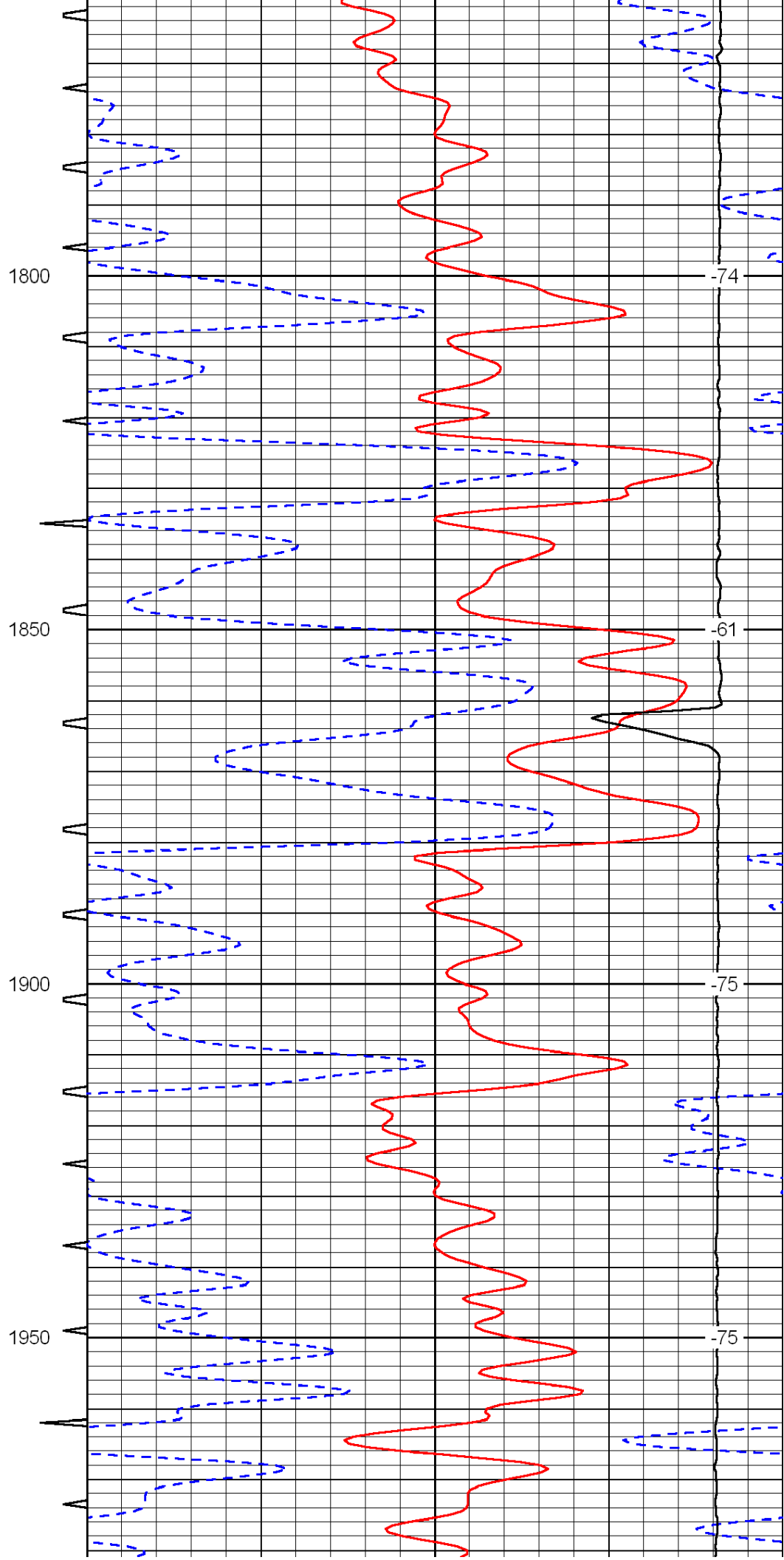
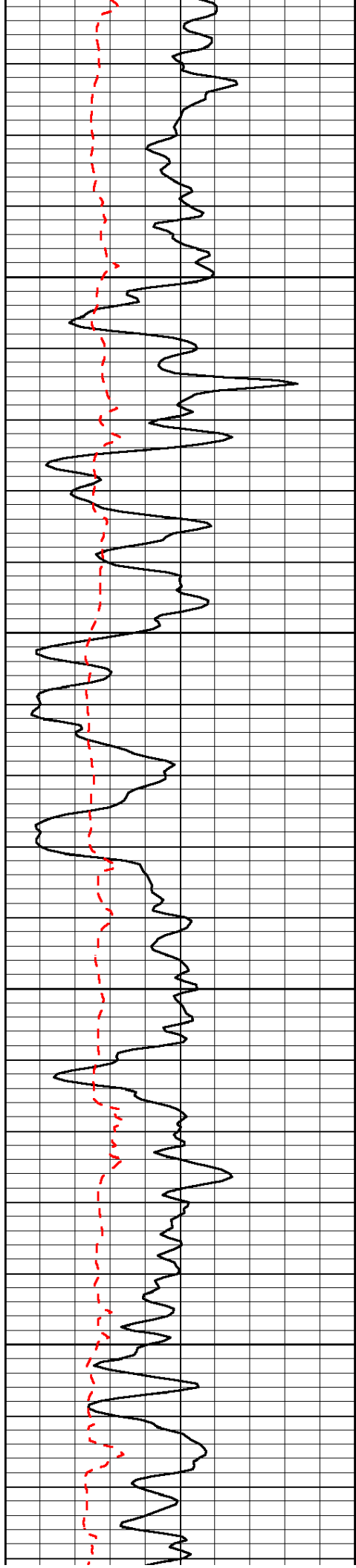


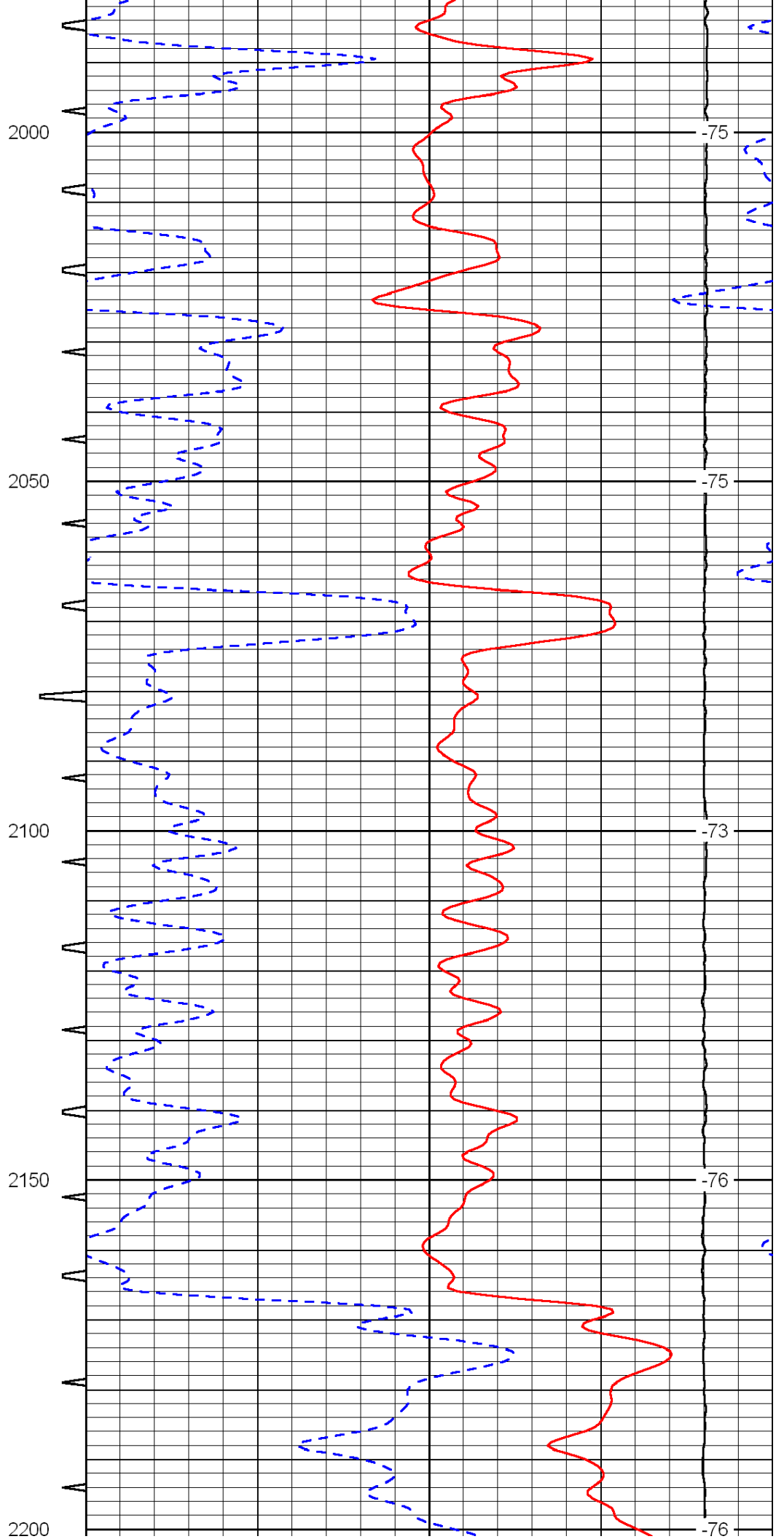
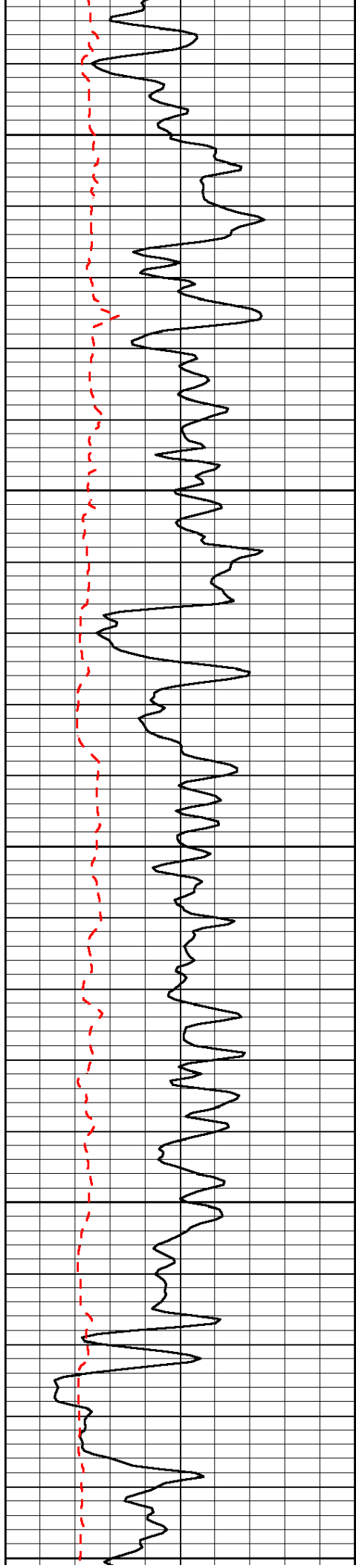


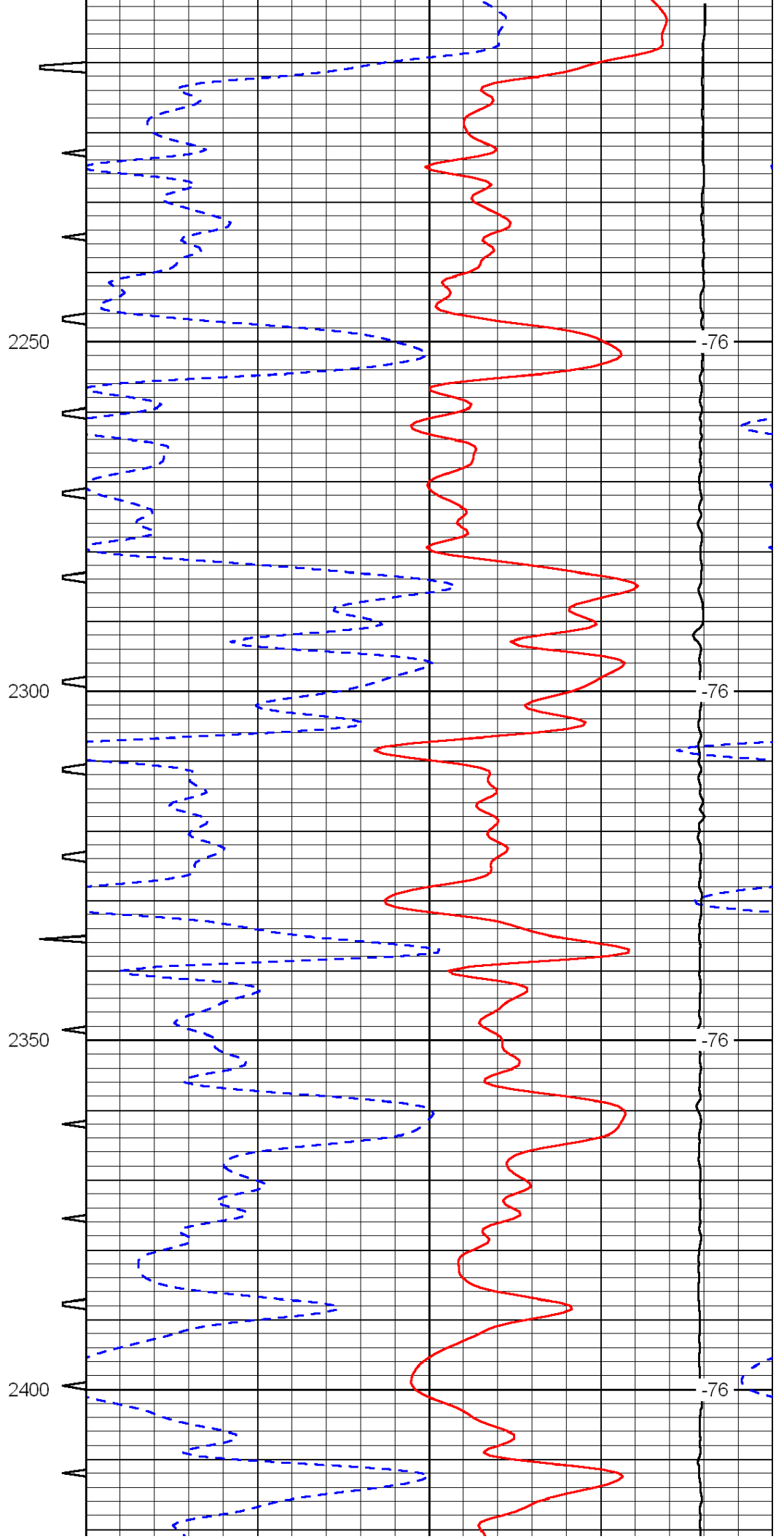
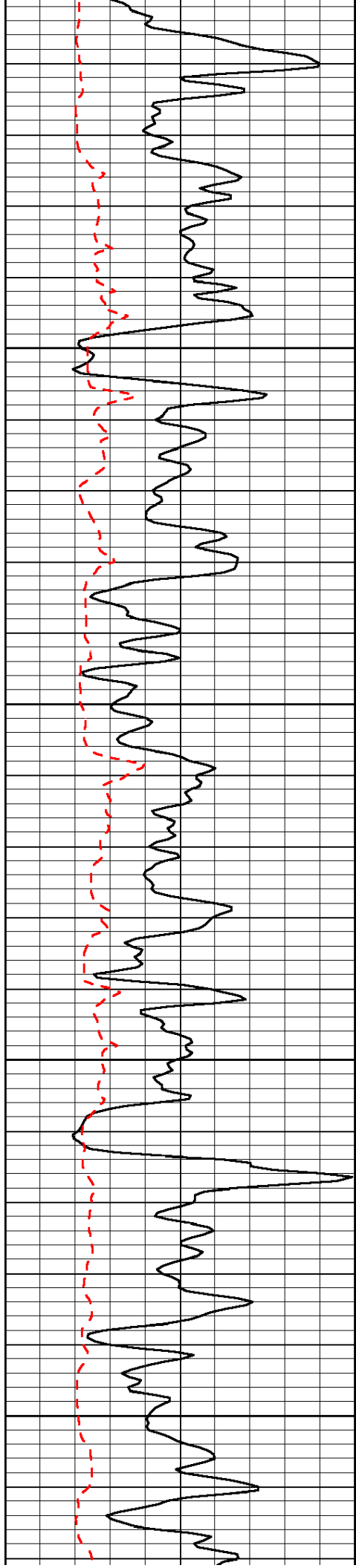


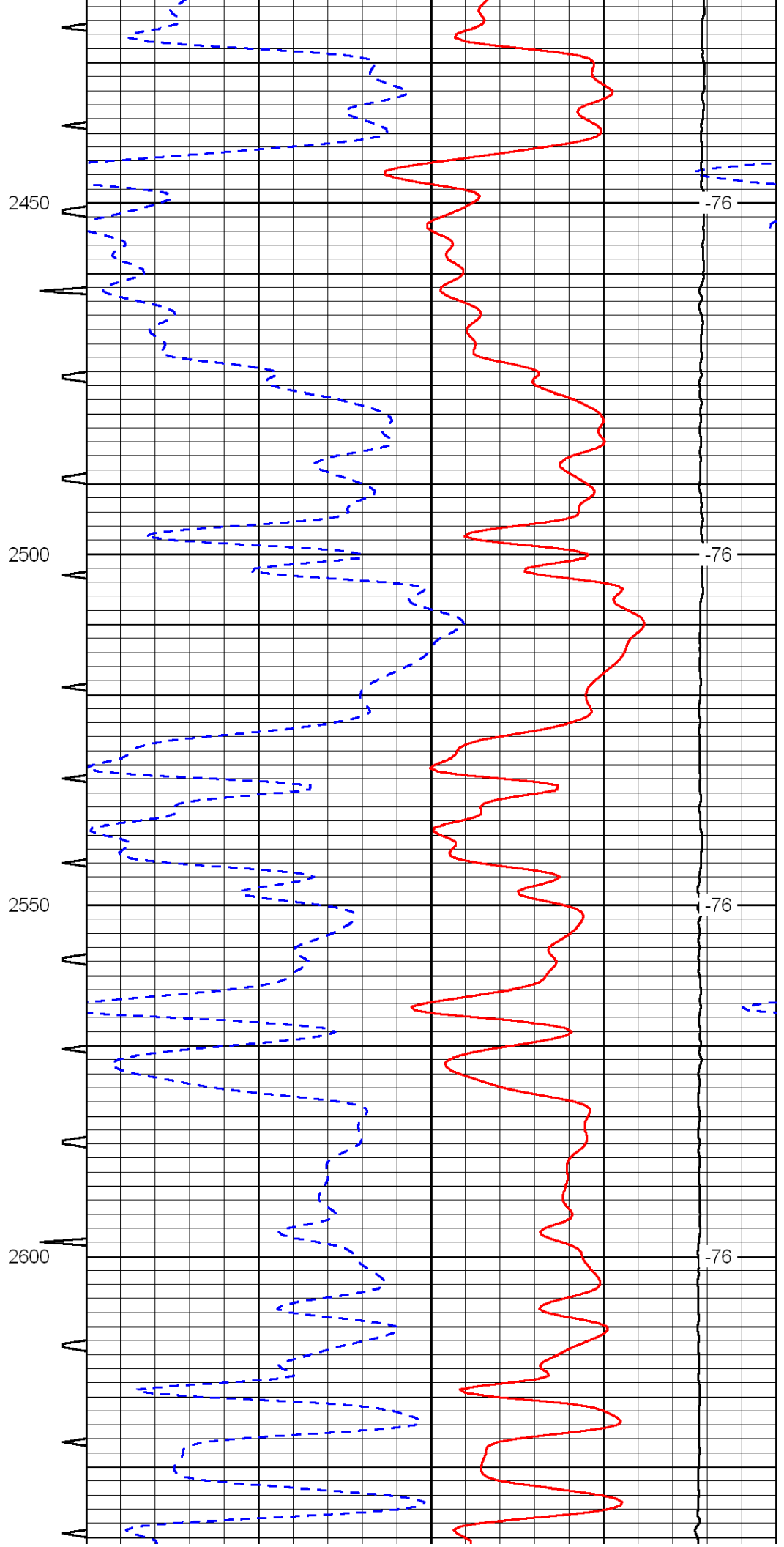
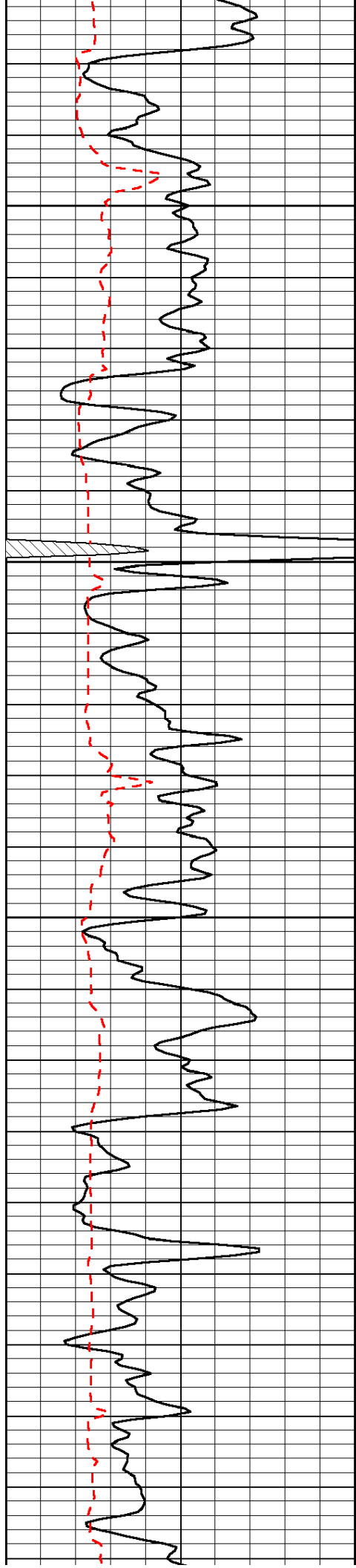


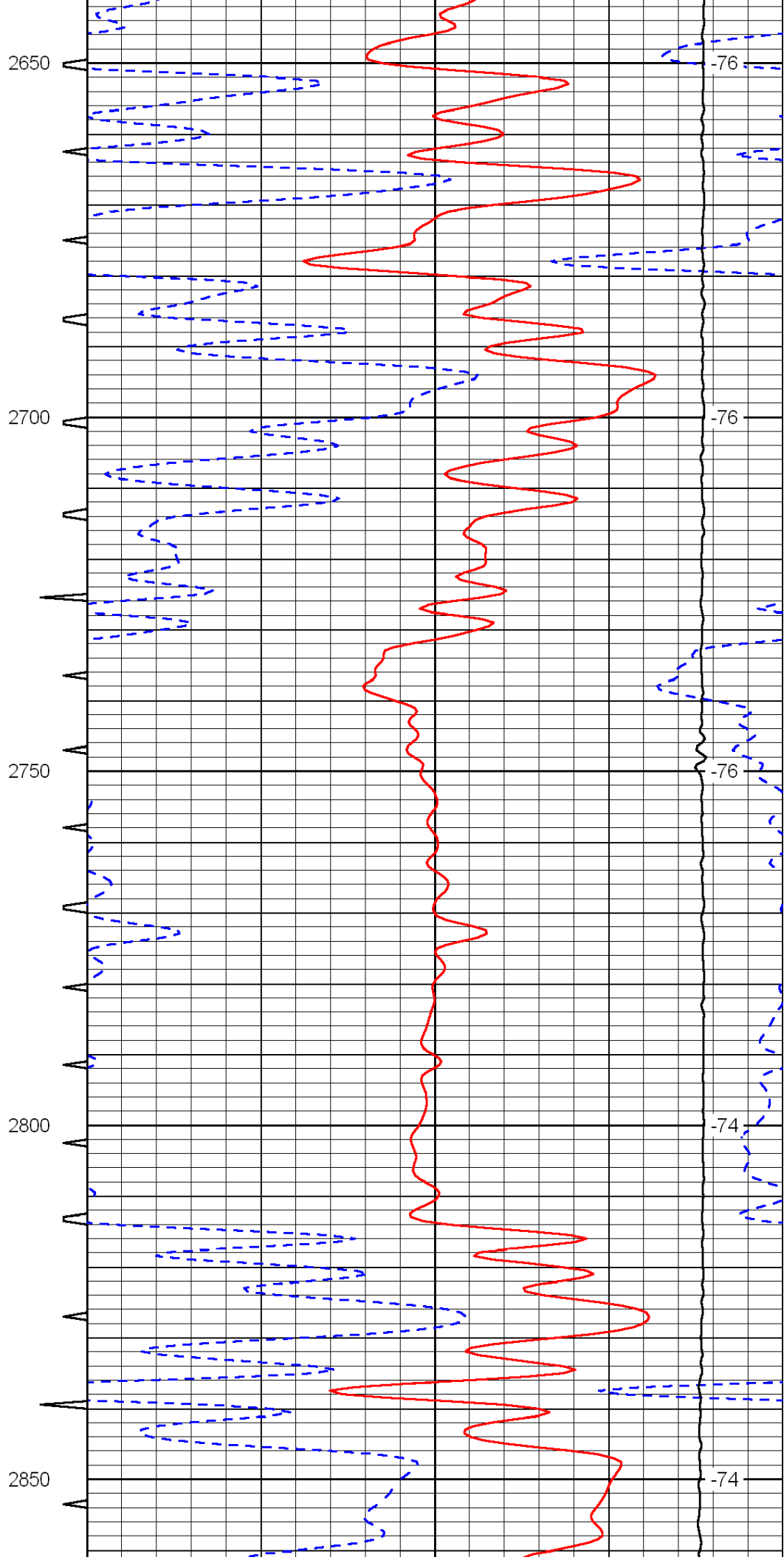
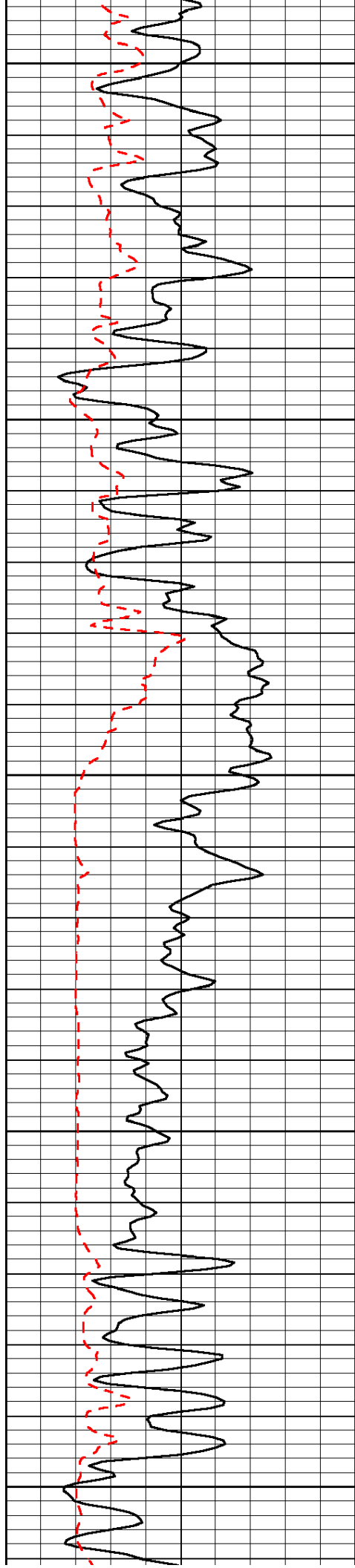


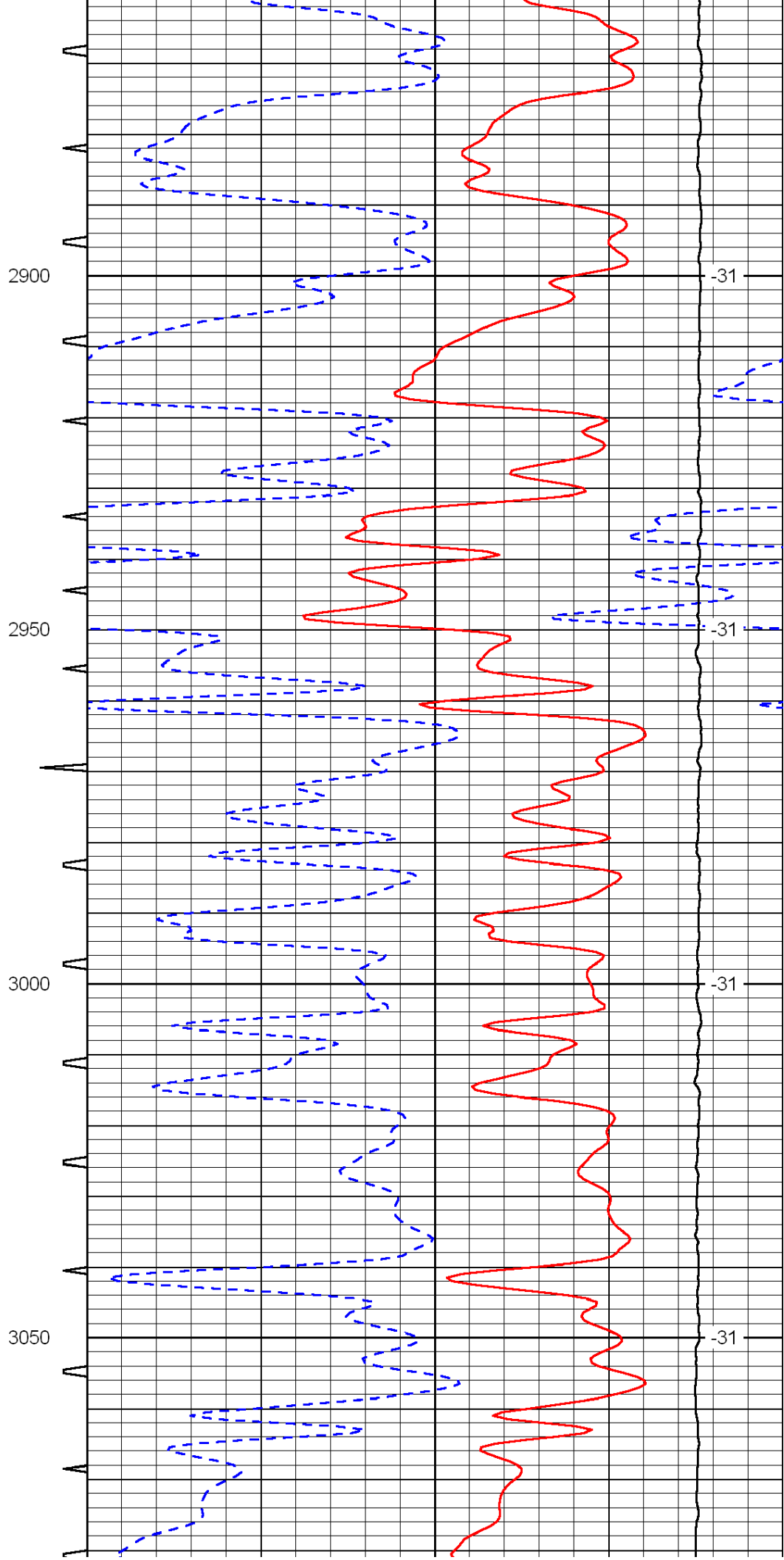
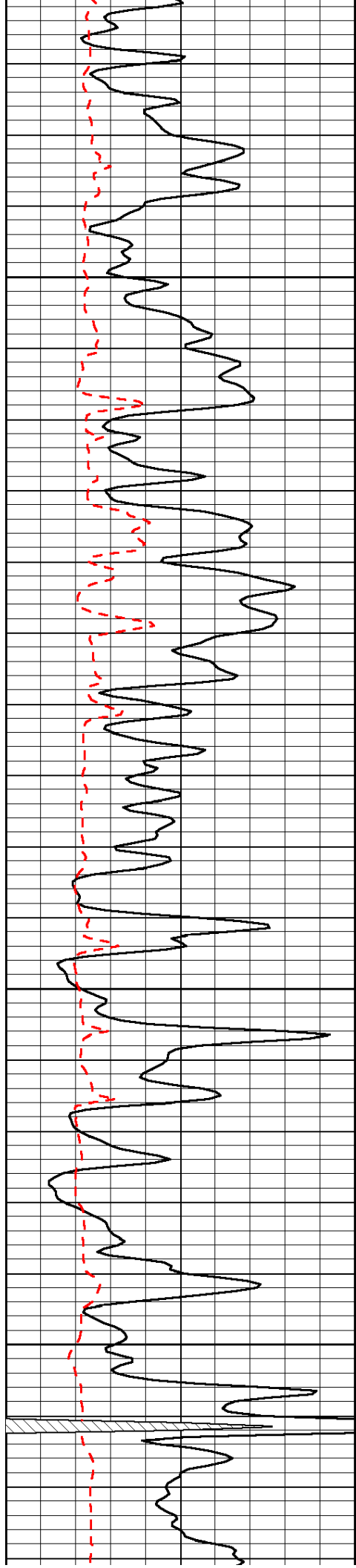


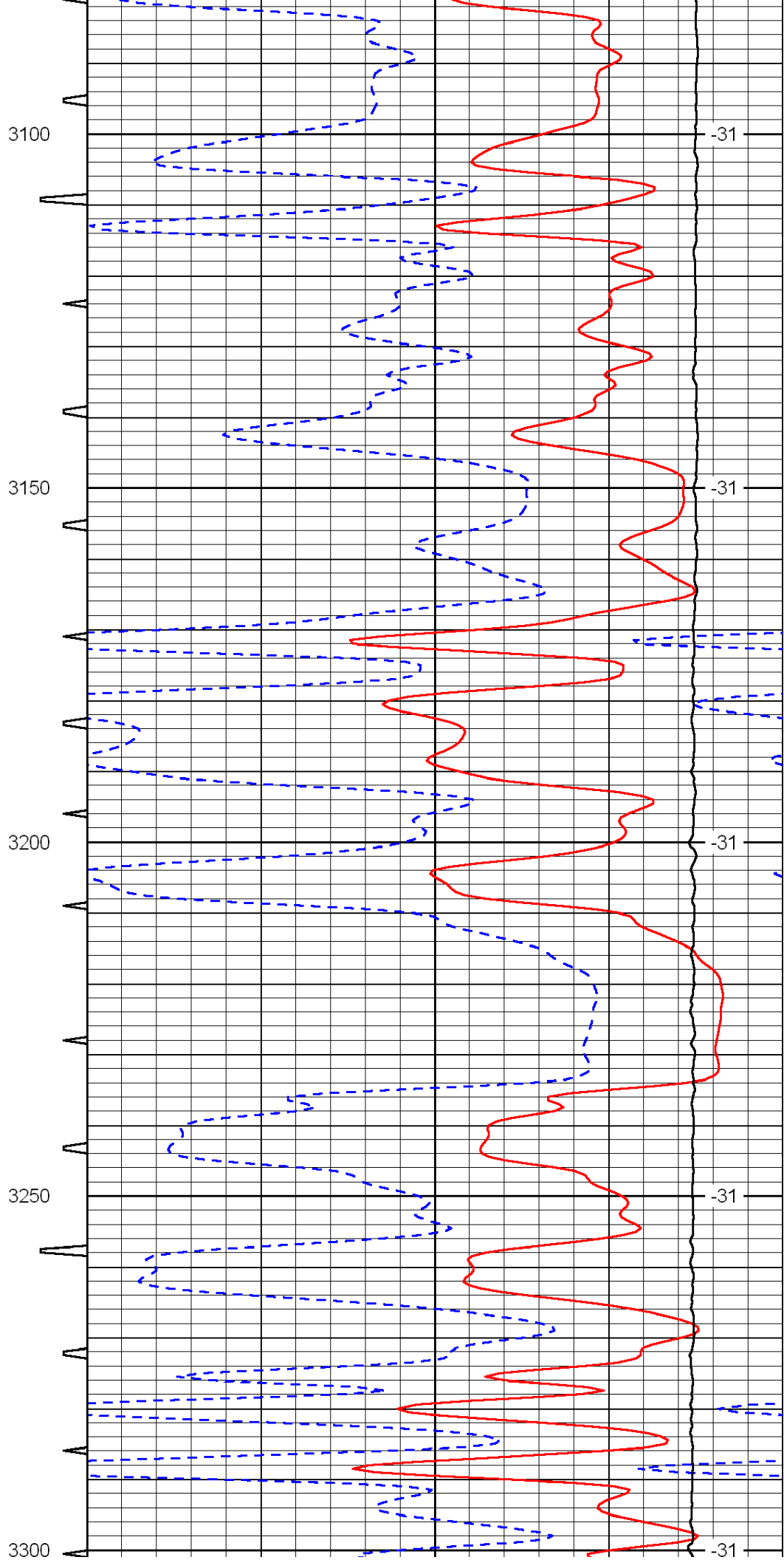
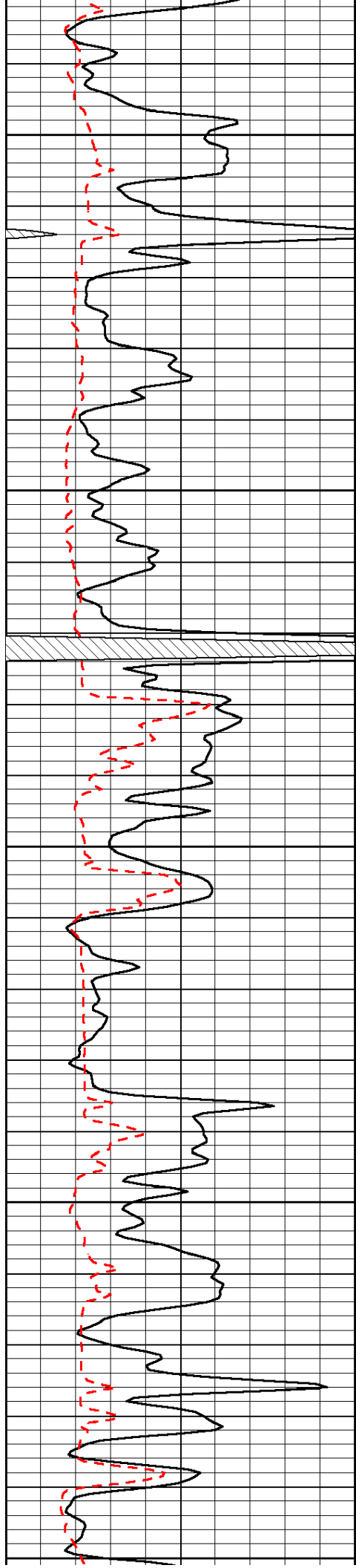


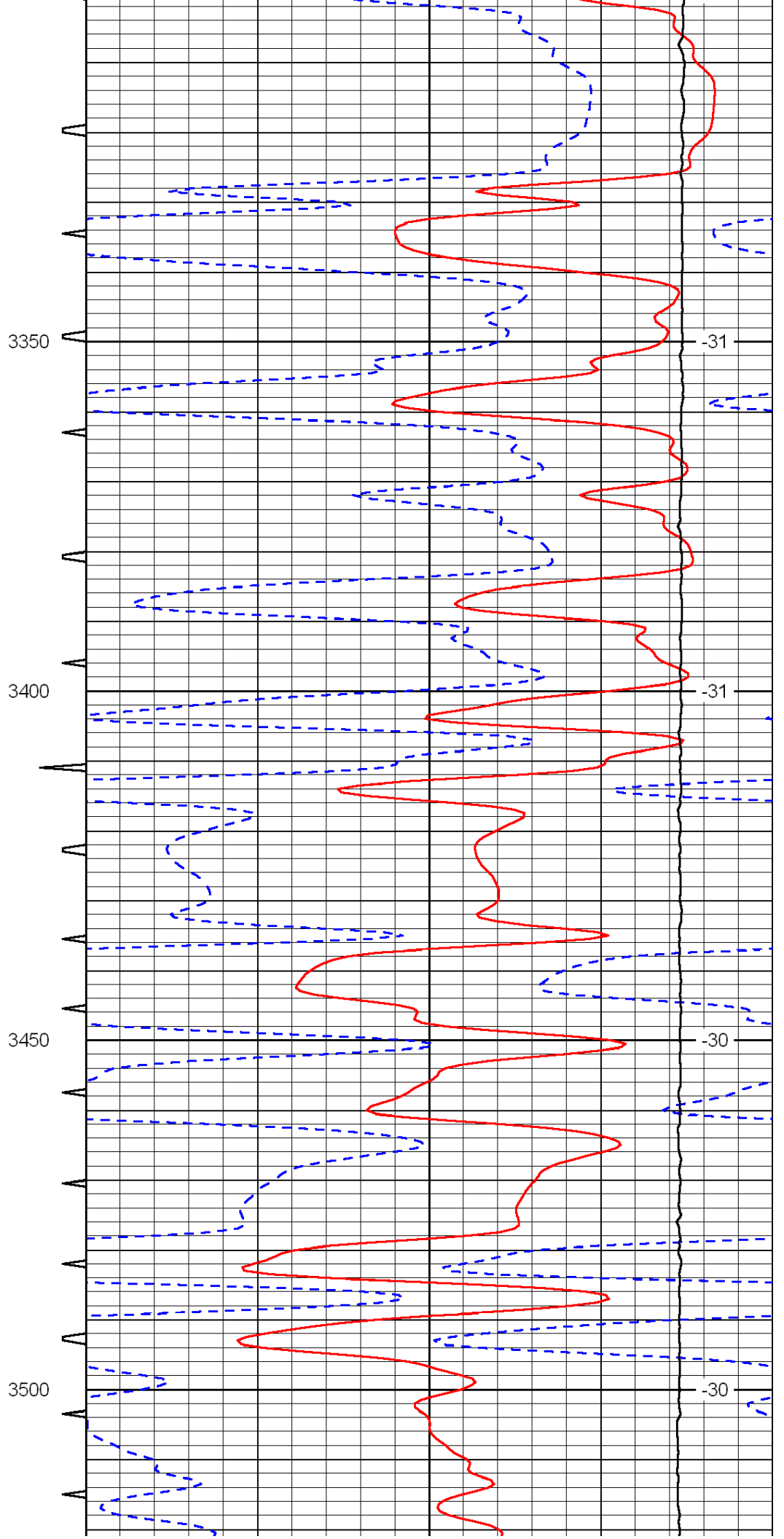
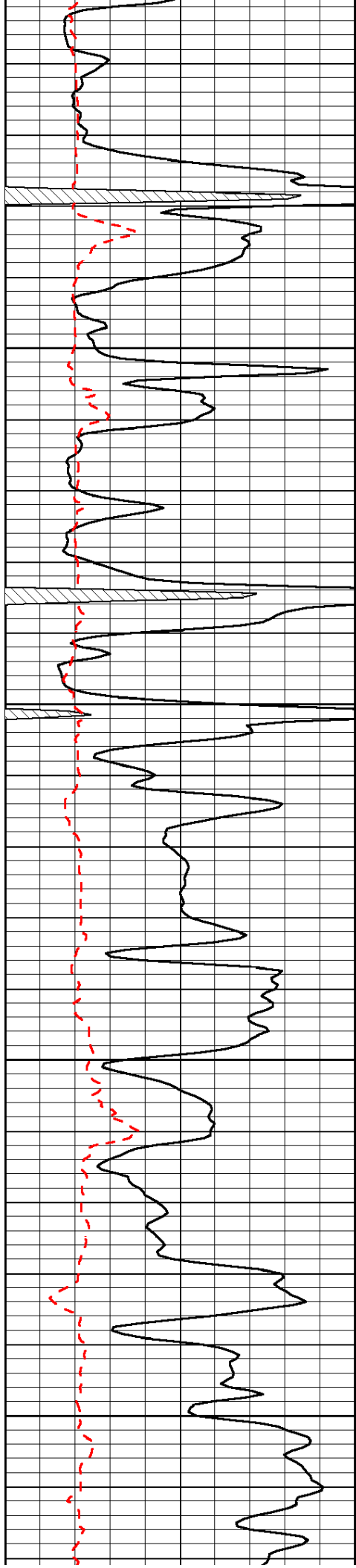


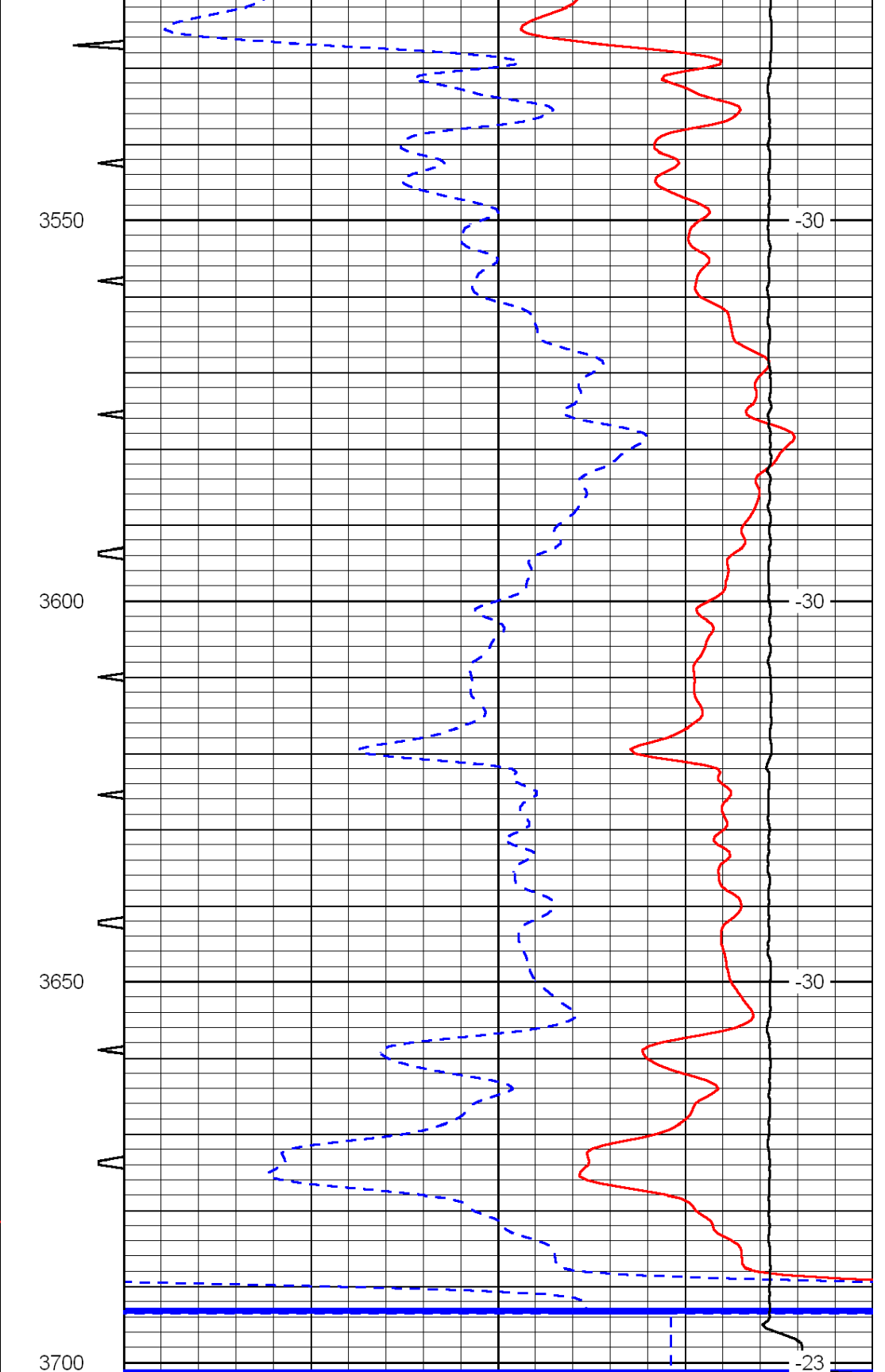
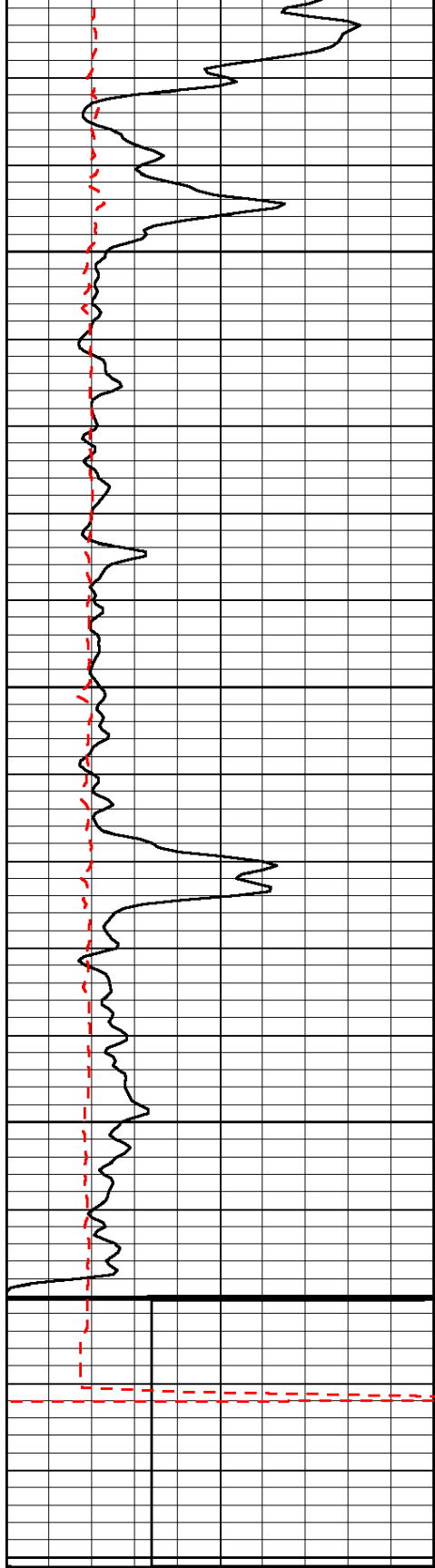












0	Gamma Ray	150	Sonic Int	140	Delta Time (usec/ft)	40
150	Gamma Ray	300	5	0	SPOR	-10
6	Caliper (GAPI)	16		15000	LTEN (lb)	0
LSPD						