



DIGITAL LOG (785) 625-3858

Dual Induction Log

API No.	15-065-23,713-00-00	
Company	Venture Resources, Inc.	
Well	Billips No.2-16	
Field	Graham	
County	State	Kansas
Location	SE NW NE 4390' FSL & 1710' FEL	
Sec: 16	Twp: 8S	Rge: 21W
Other Services	CNL/CDL BHCS/FRAC	

Permanent Datum	Ground Level	Elevation 2003
Log Measured From	Kelly Bushing	7 Ft. Above Perm. Datum
Drilling Measured From	Kelly Bushing	
Date	2/7/2011	

Run Number	One
Depth Driller	3700
Depth Logger	3696
Bottom Logged Interval	3695
Top Log Interval	250
Casing Driller	8.625 @ 265
Casing Logger	265
Bit Size	7.875
Type Fluid in Hole	Chemical
Salinity,ppm CL	2.500
Density / Viscosity	9.5 45
pH / Fluid Loss	10.0 11.2
Source of Sample	Flowline
Rm @ Meas. Temp	1.9 @ 62
Rmf @ Meas. Temp	1.43 @ 62
Rmc @ Meas. Temp	2.57 @ 62
Source of Rmf / Rmc	Charts
Rm @ BHT	1.02 @ 115
Operating Rig Time	4 Hours
Max Rec. Temp. F	115
Equipment Number	17
Location	Hays
Recorded By	C. Desaire
Witnessed By	Greg Mackey

<<< Fold Here >>>

All interpretations are opinions based on inferences from electrical or other measurements and we cannot and do not guarantee the accuracy or correctness of any interpretation, and we shall not, except in the case of gross or willful negligence on our part, be liable or responsible for any loss, costs, damages, or expenses incurred or sustained by anyone resulting from any interpretation made by any of our officers, agents or employees. These interpretations are also subject to our general terms and conditions set out in our current Price Schedule.

Comments

Thank you for using Log-Tech, Inc.
(785) 625-3858

Bogue, 1 E, N Into

Database File: c:\warrior\data\venture_billips no.2-16\venthd.db
 Dataset Pathname: dil\ventstk
 Presentation Format: dil2in
 Dataset Creation: Mon Feb 07 20:12:08 2011
 Charted by: Depth in Feet scaled 1:600

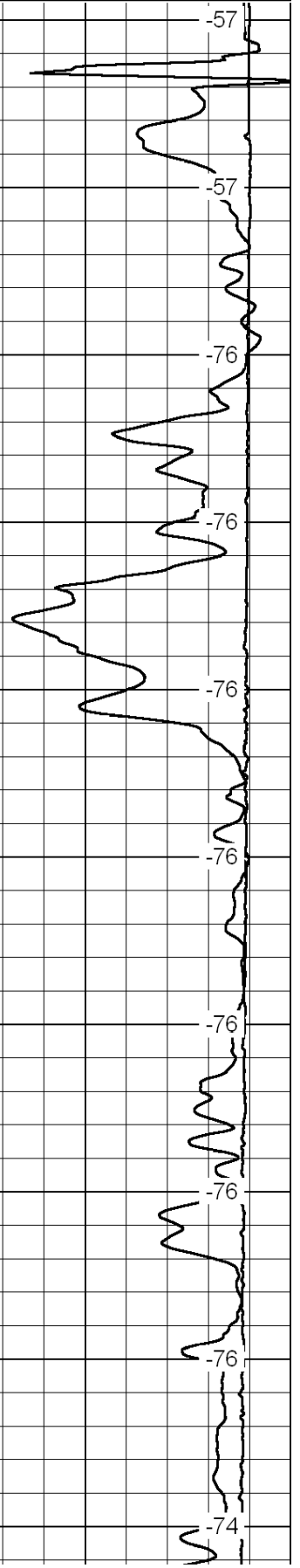
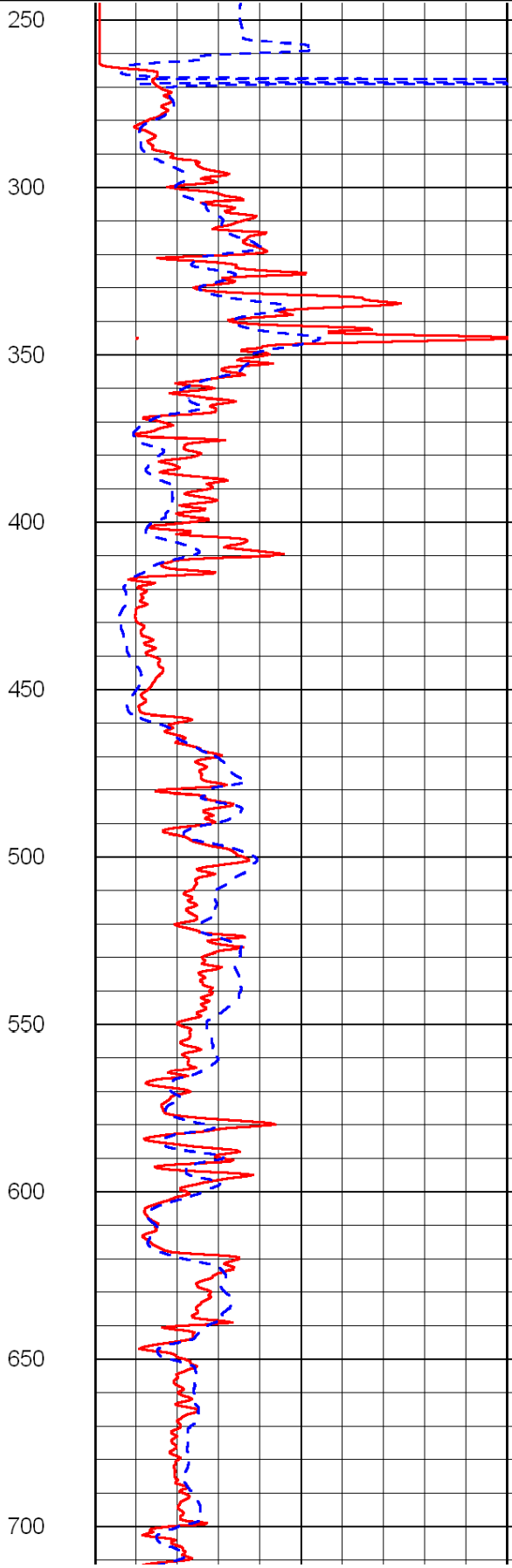
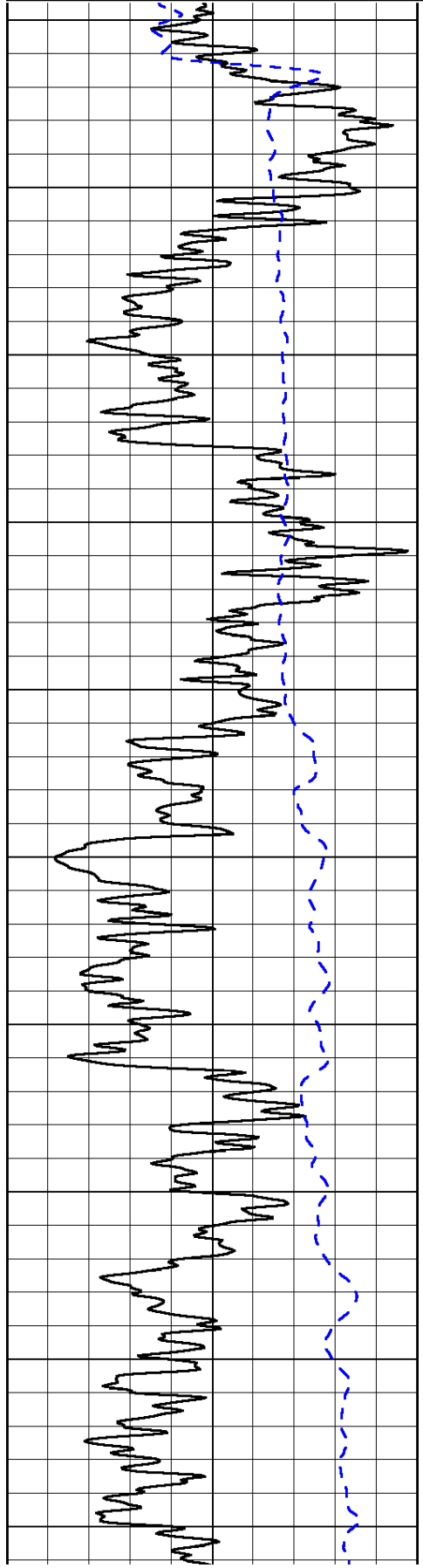
0	Gamma Ray	150
-200	SP (mV)	0

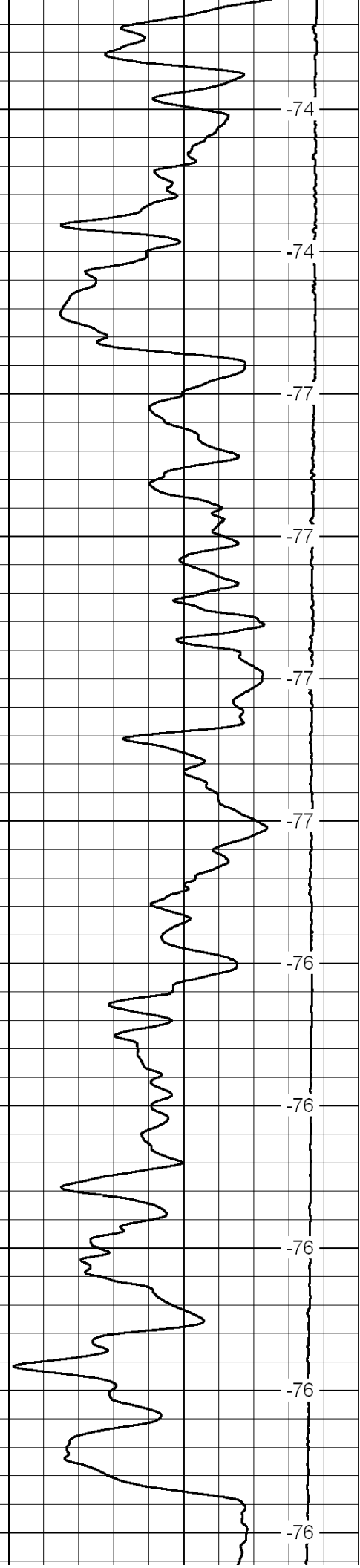
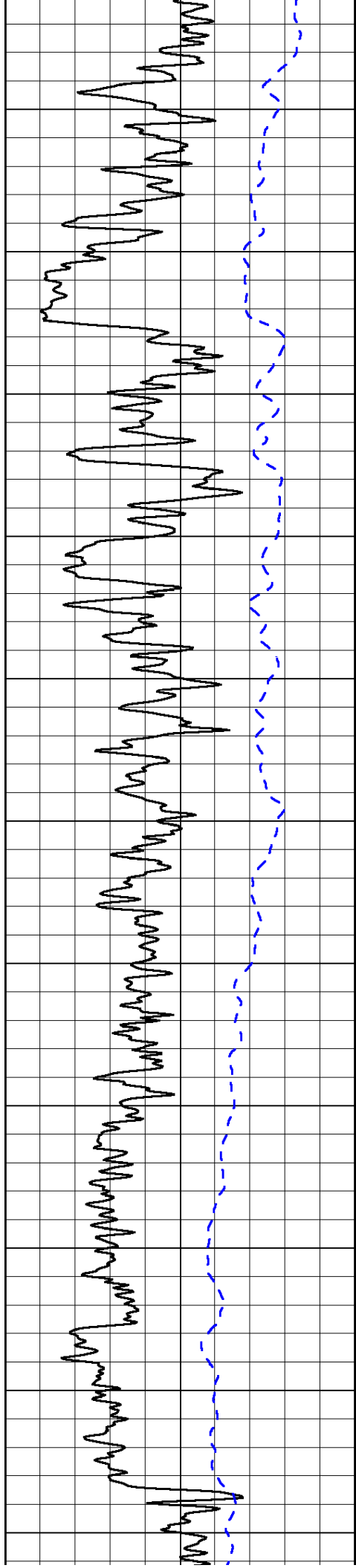
0	Shallow Resistivity	50
0	Deep Resistivity	50

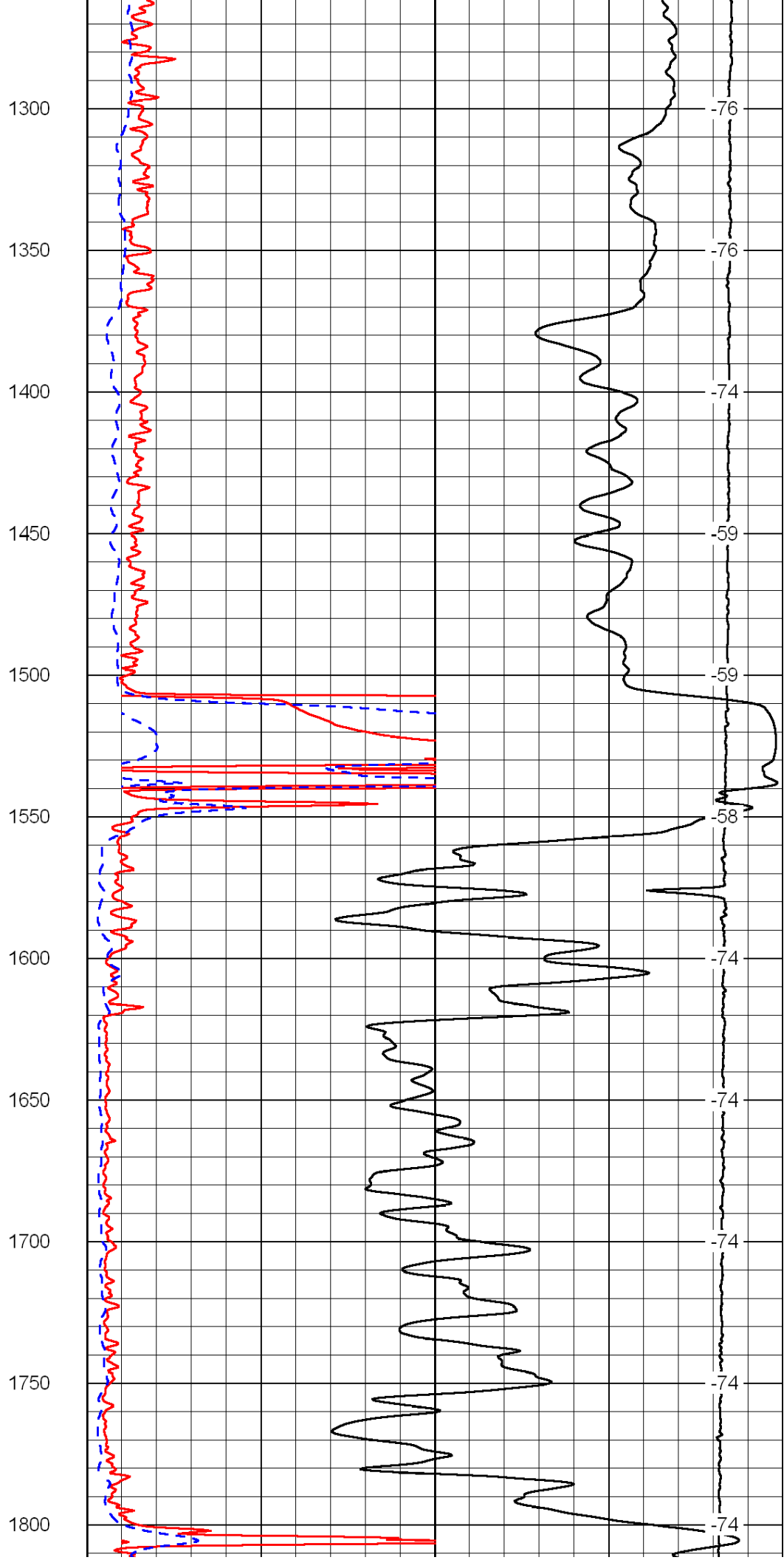
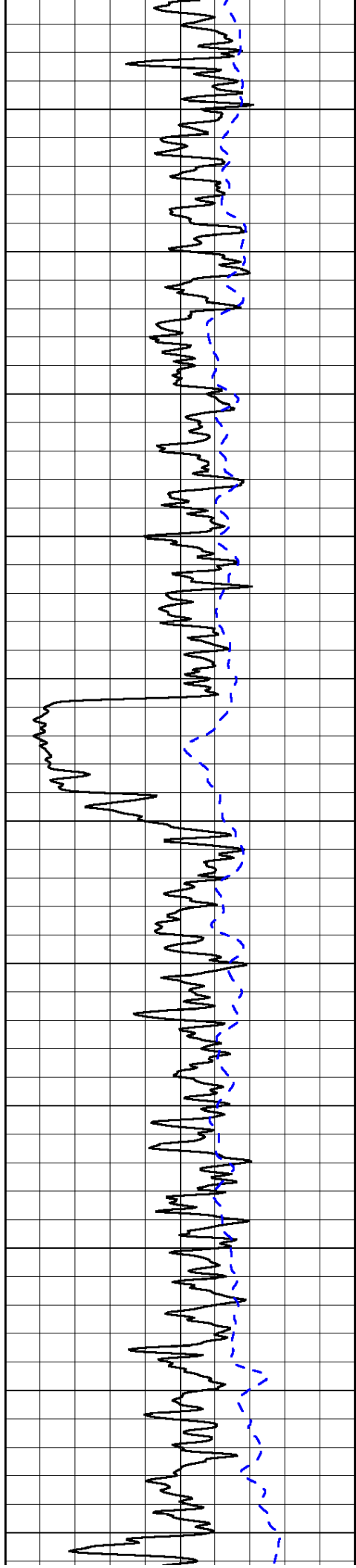
LSPD

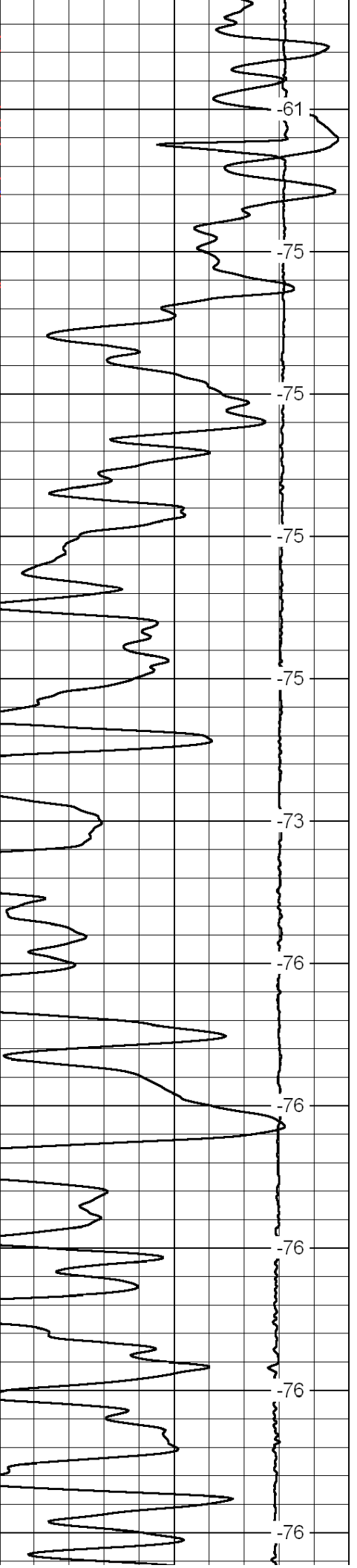
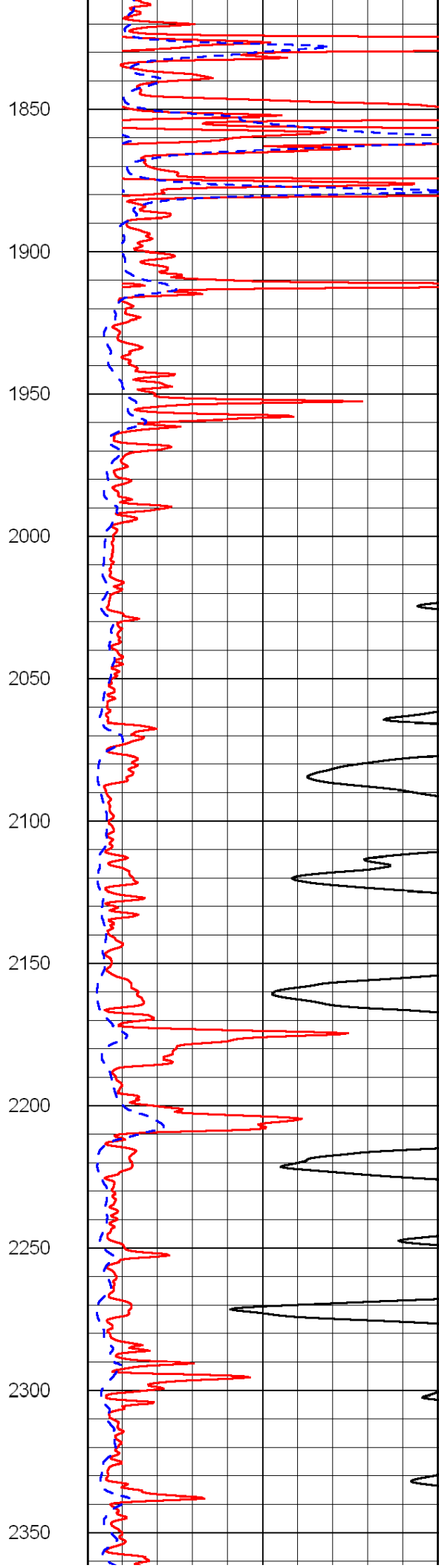
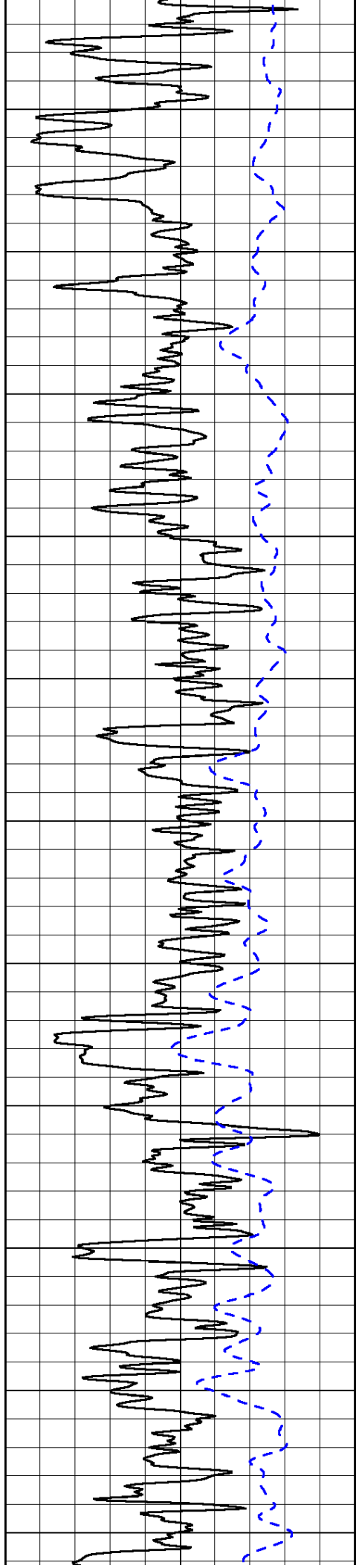
1000	Conductivity	0
15000	Line Tension	0

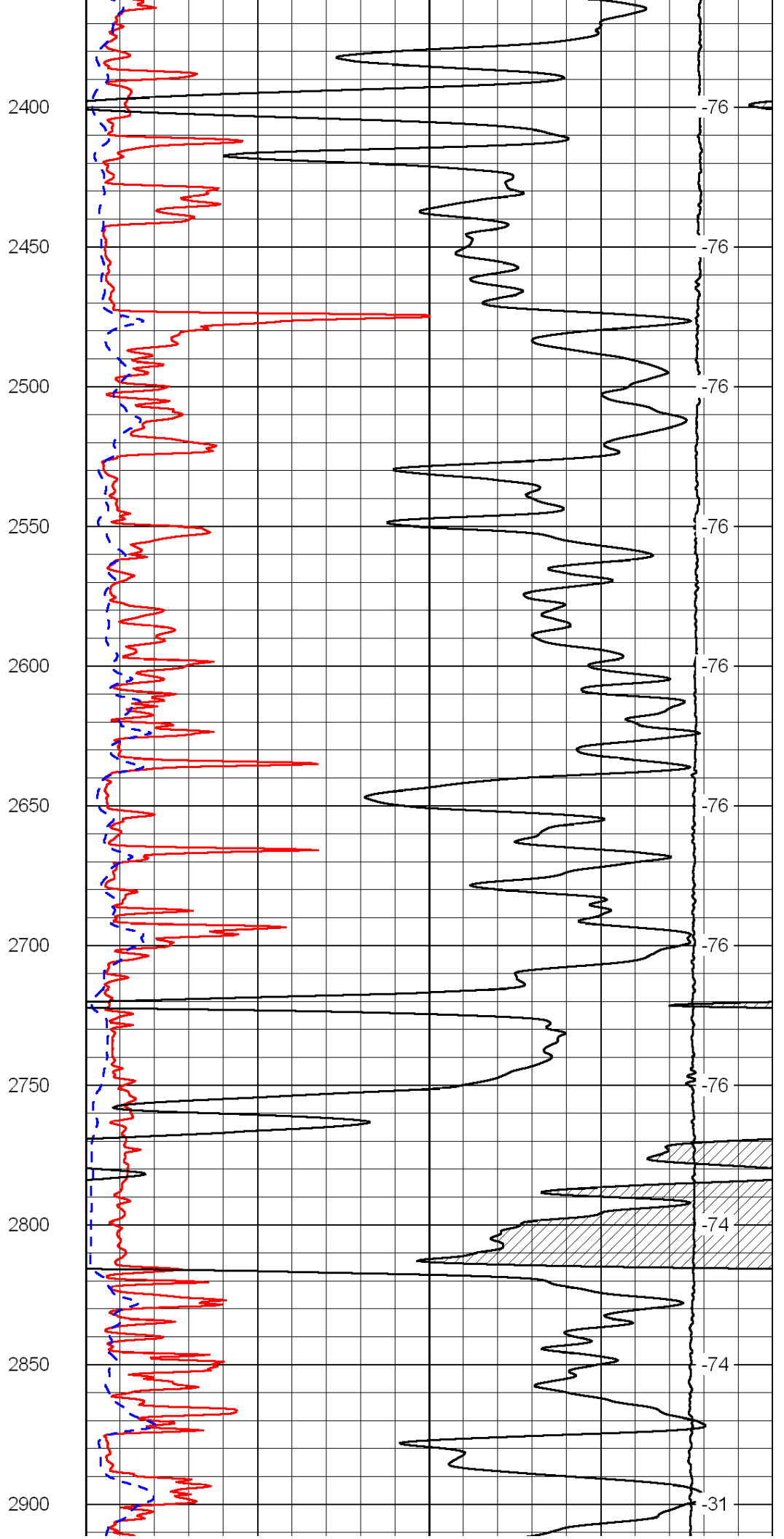
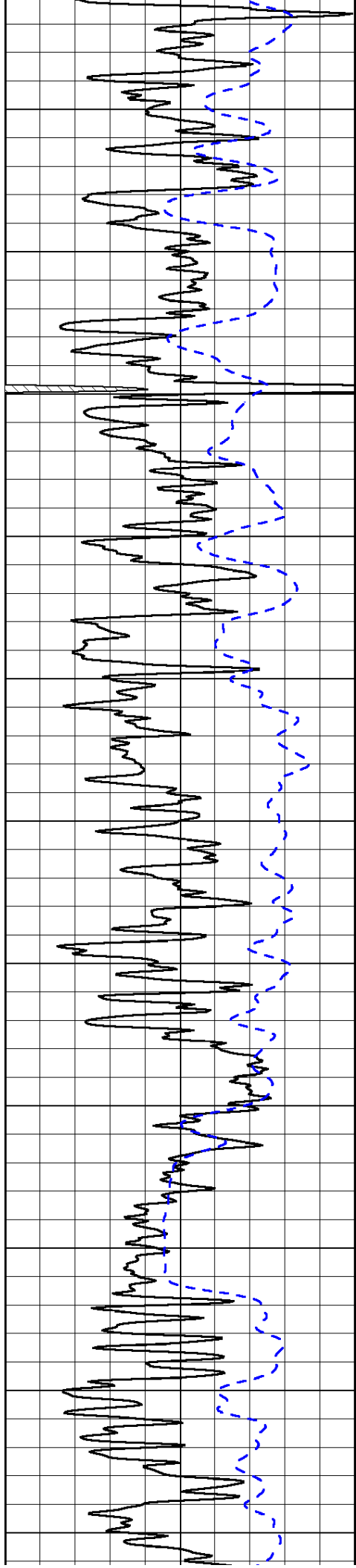
50	Shallow Resistivity	500
50	Deep Resistivity	500

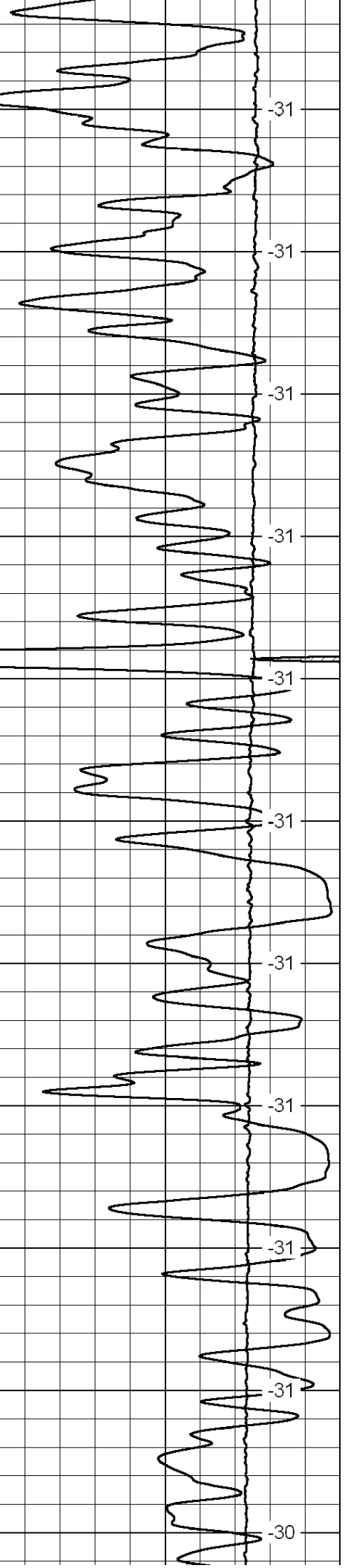
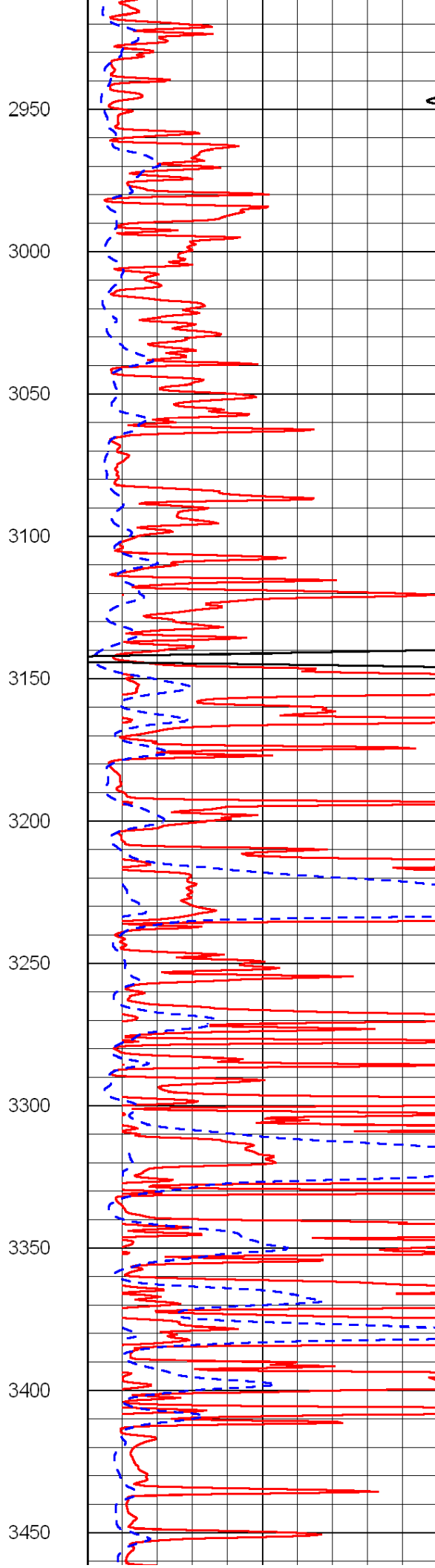
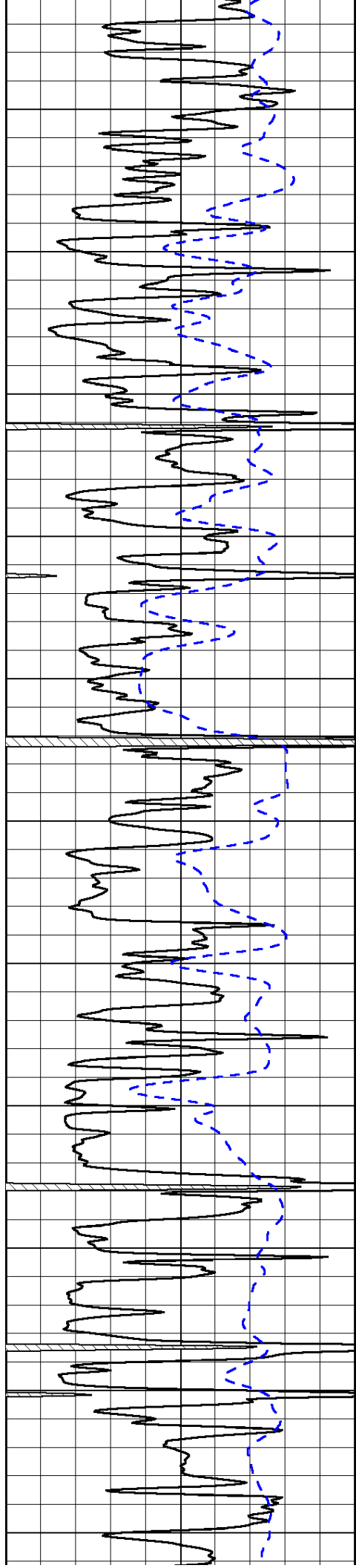


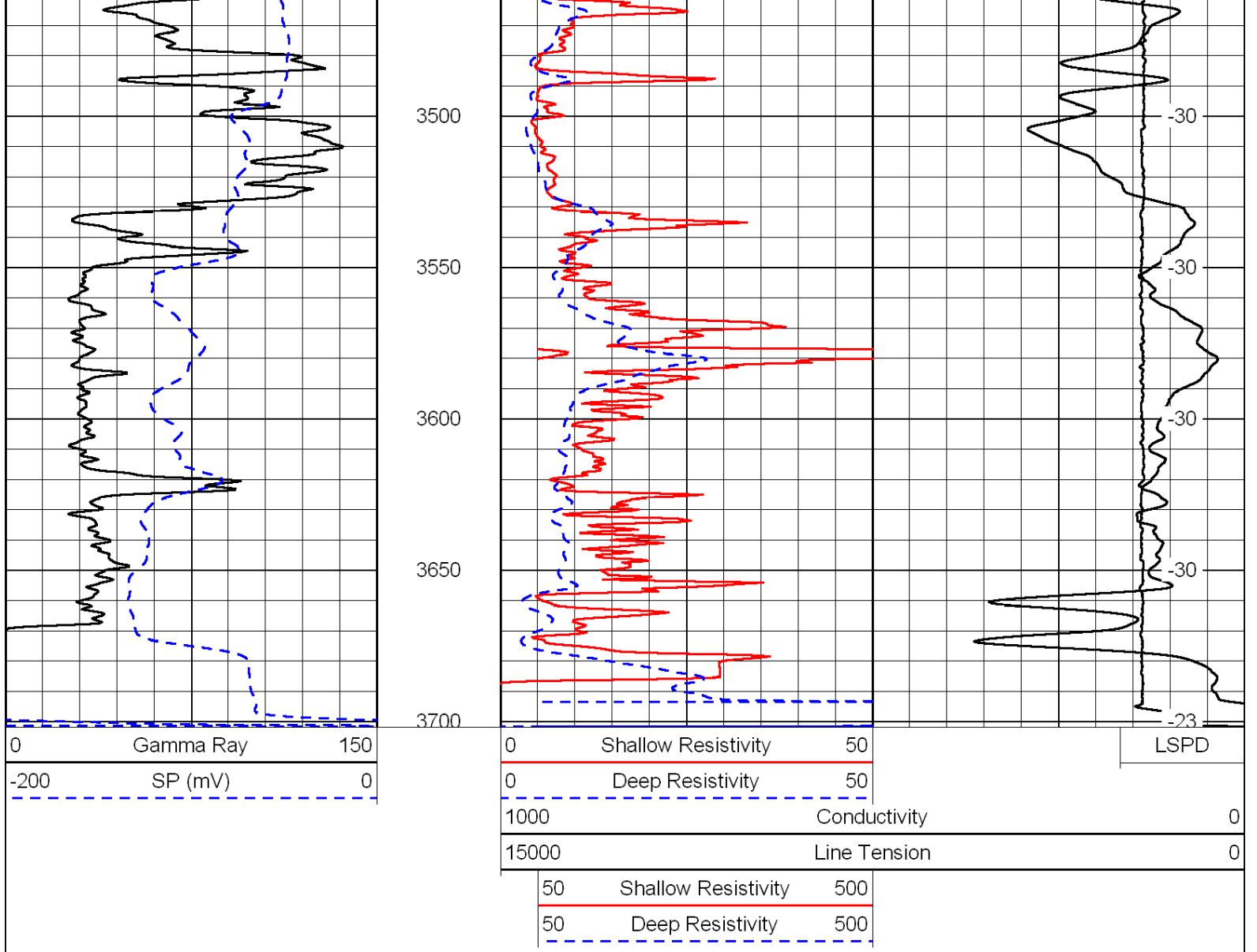




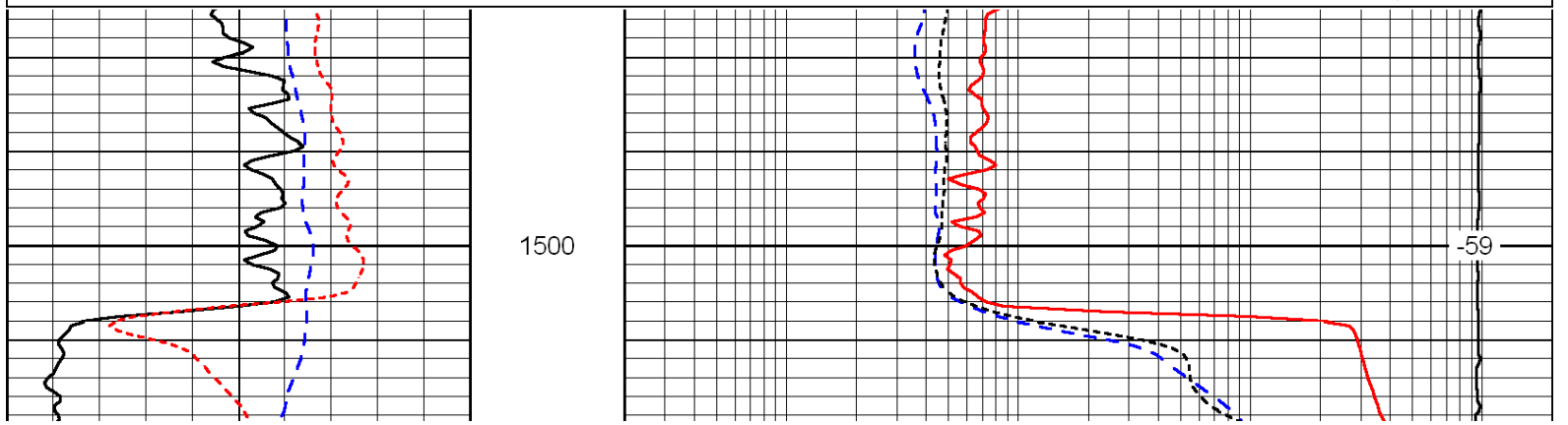
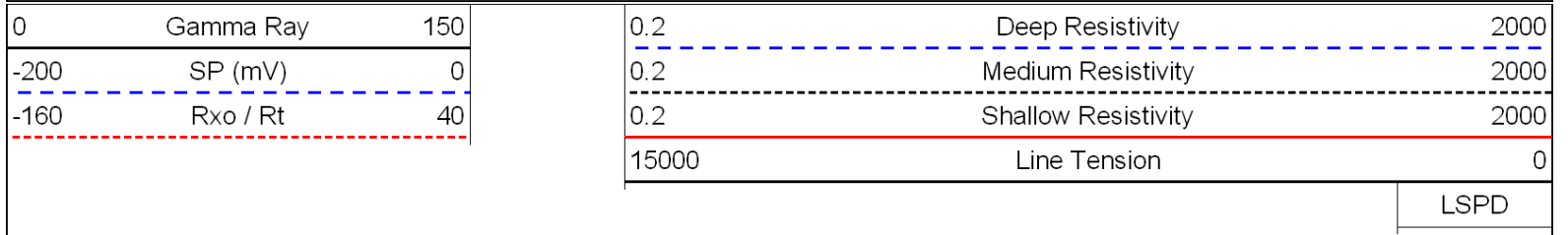


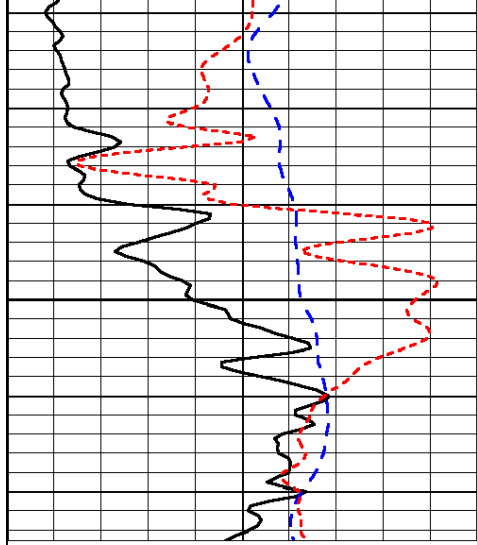






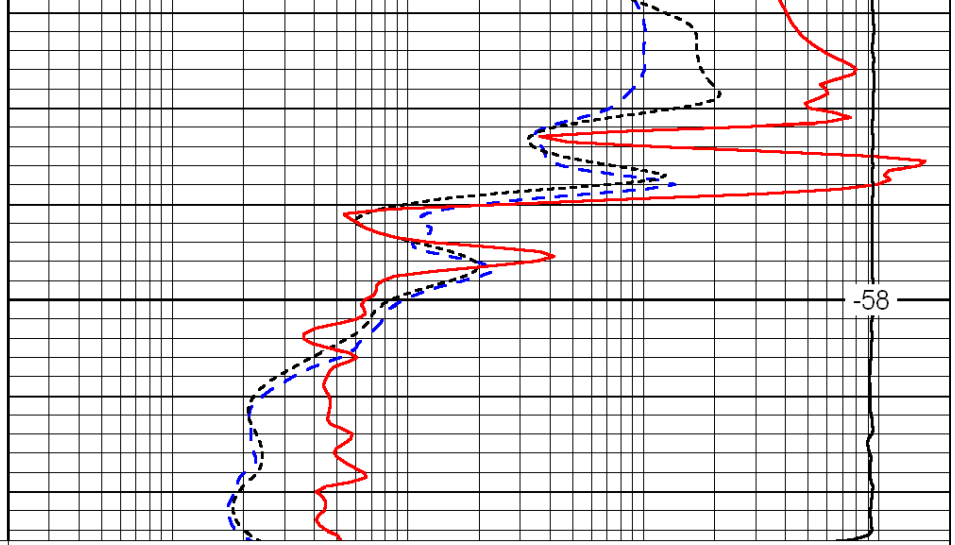
Database File: c:\warrior\data\venture_billips no.2-16\venthd.db
 Dataset Pathname: dil/ventstk
 Presentation Format: dil
 Dataset Creation: Mon Feb 07 20:12:08 2011
 Charted by: Depth in Feet scaled 1:240





0	Gamma Ray	150
-200	SP (mV)	0
-160	Rxo / Rt	40

1550



0.2	Deep Resistivity	2000
0.2	Medium Resistivity	2000
0.2	Shallow Resistivity	2000
15000	Line Tension	0

-58

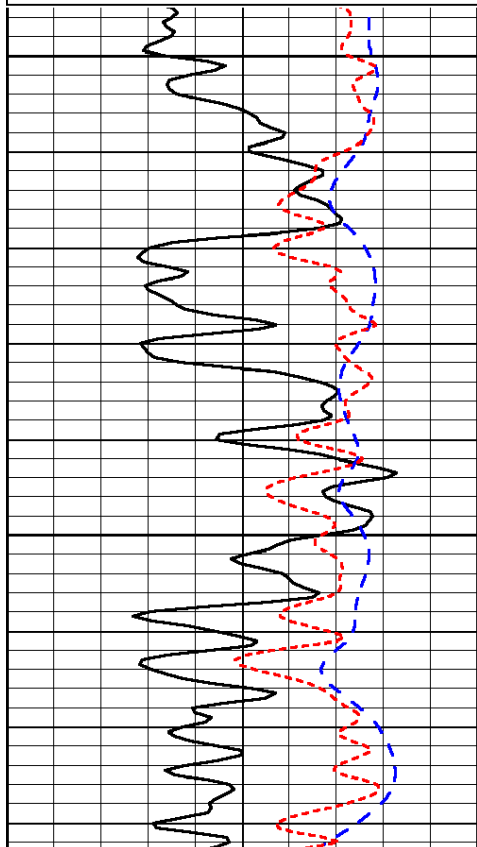
LSPD

Database File: c:\warrior\data\venture_billips no.2-16\venthd.db
 Dataset Pathname: dil/ventstk
 Presentation Format: dil
 Dataset Creation: Mon Feb 07 20:12:08 2011
 Charted by: Depth in Feet scaled 1:240

0	Gamma Ray	150
-200	SP (mV)	0
-160	Rxo / Rt	40

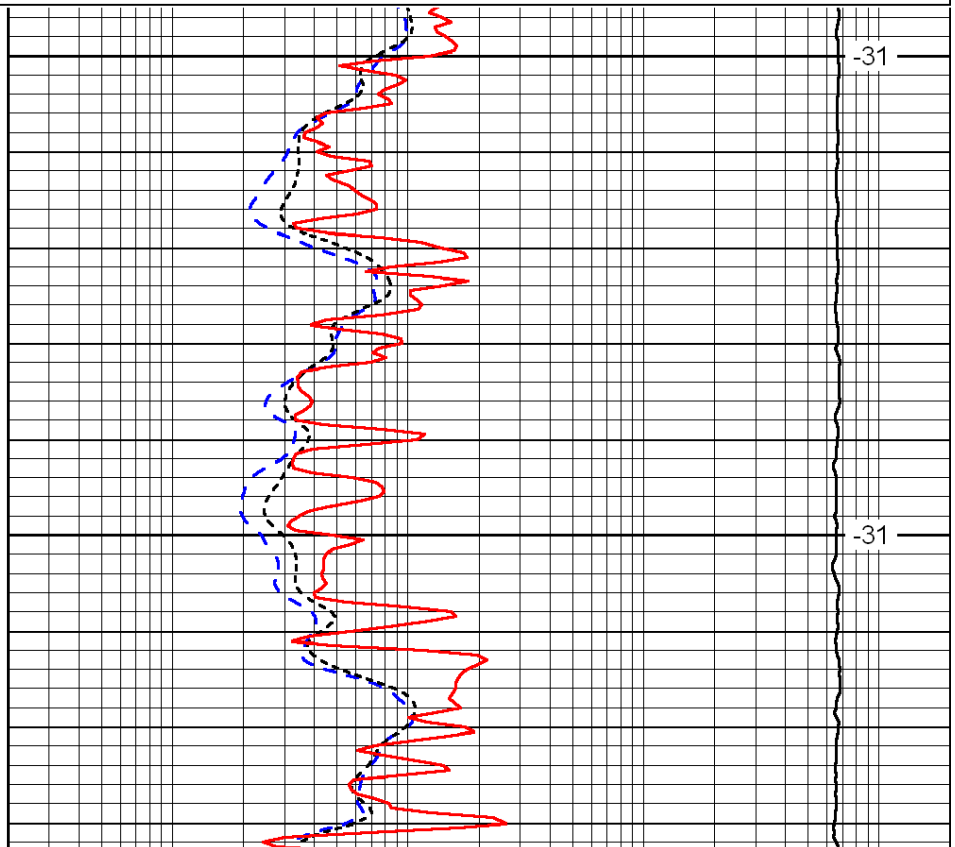
0.2	Deep Resistivity	2000
0.2	Medium Resistivity	2000
0.2	Shallow Resistivity	2000
15000	Line Tension	0

LSPD



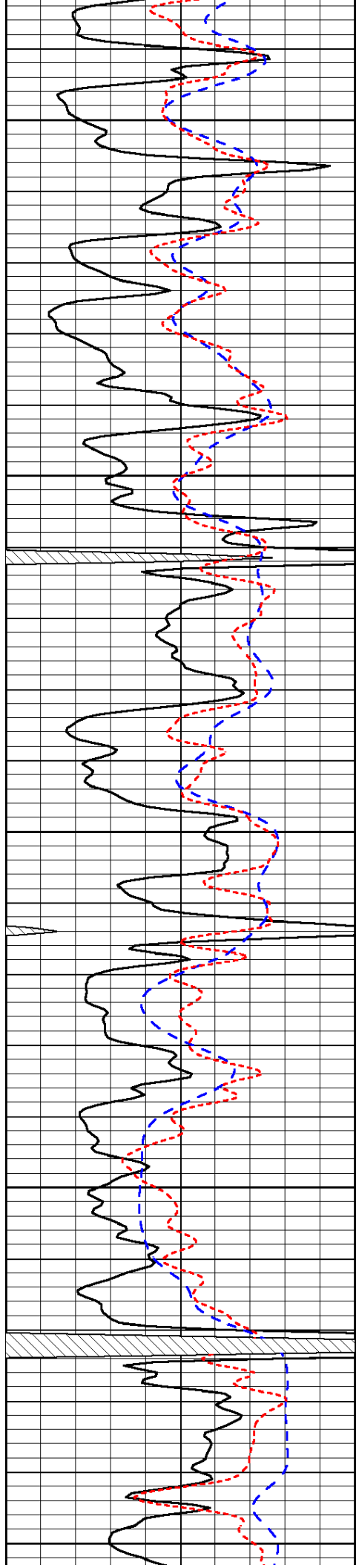
2900

2950



-31

-31



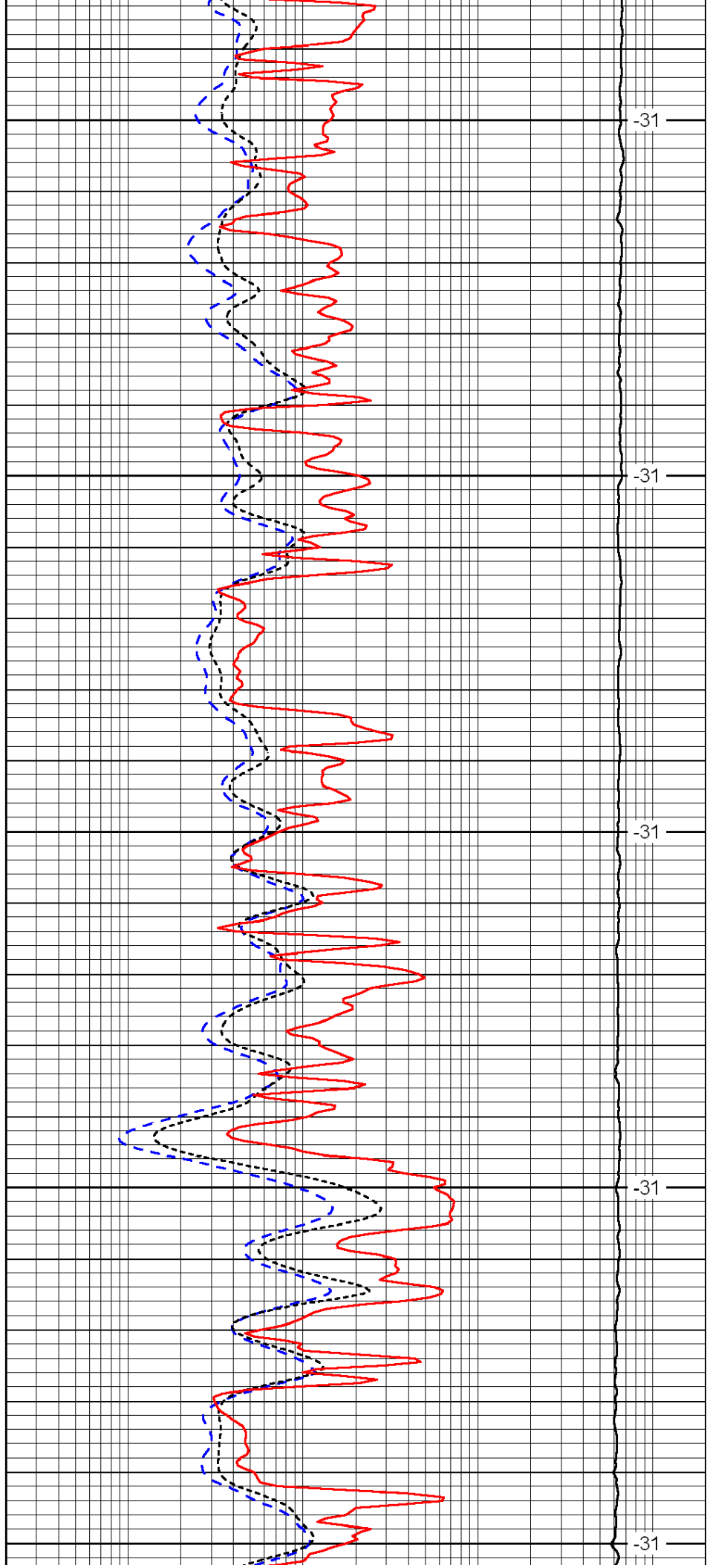
3000

3050

3100

3150

3200



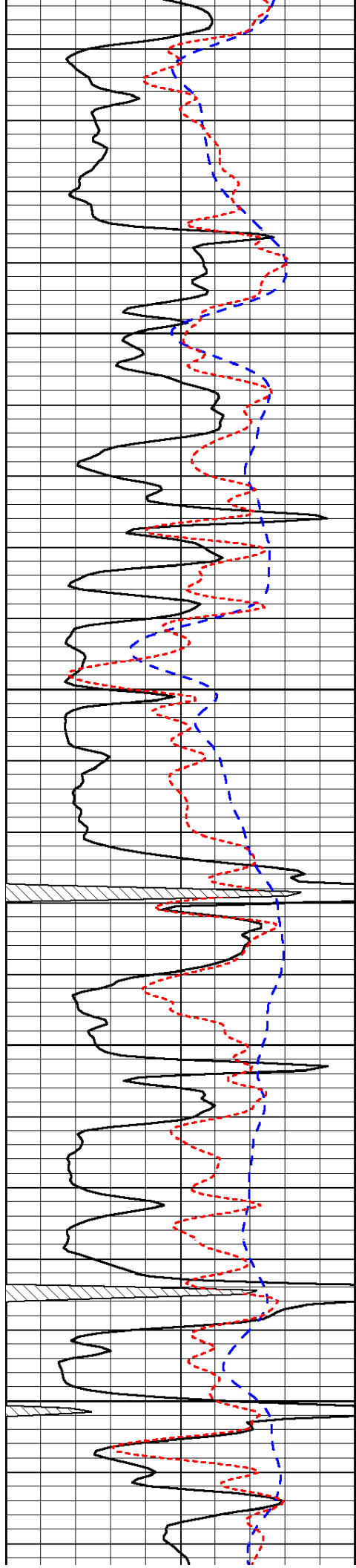
-31

-31

-31

-31

-31

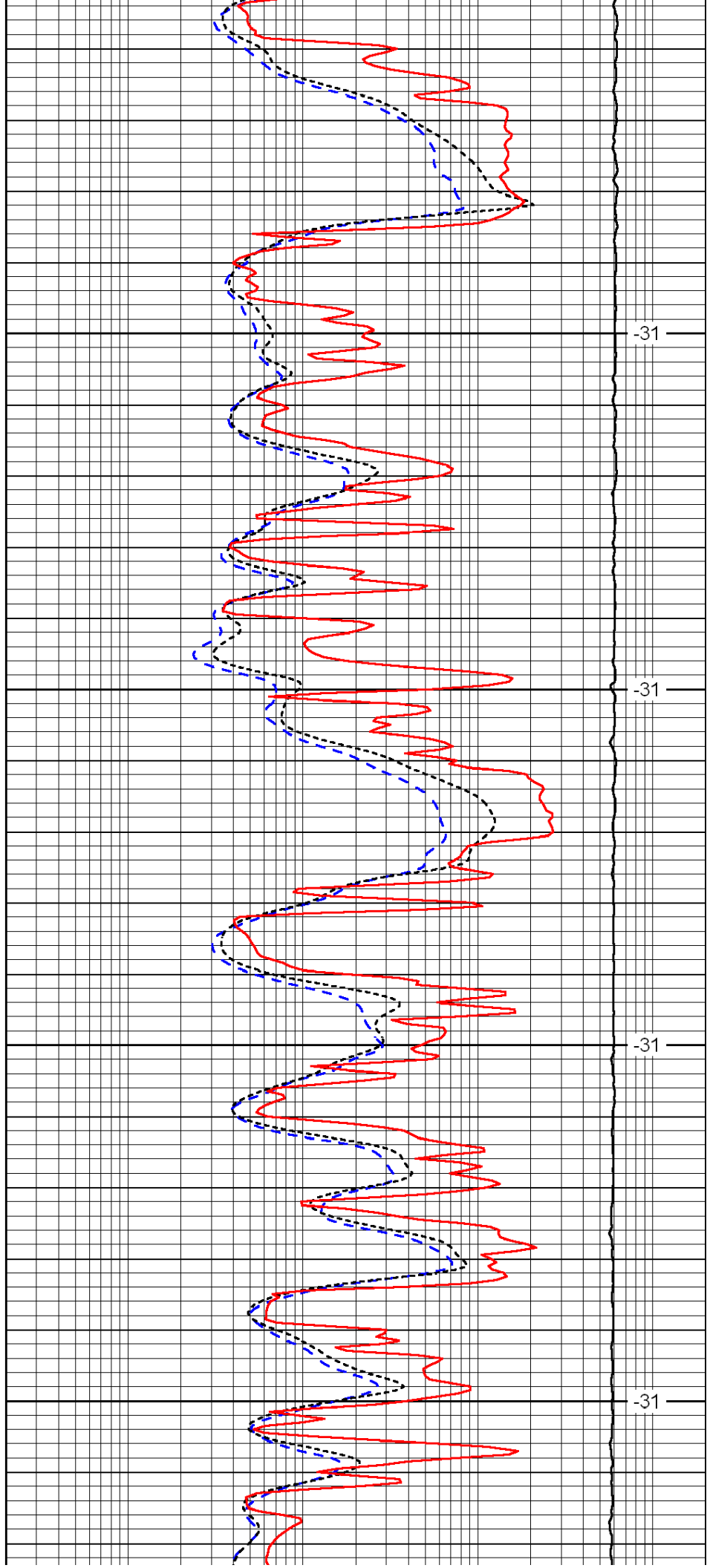


3250

3300

3350

3400

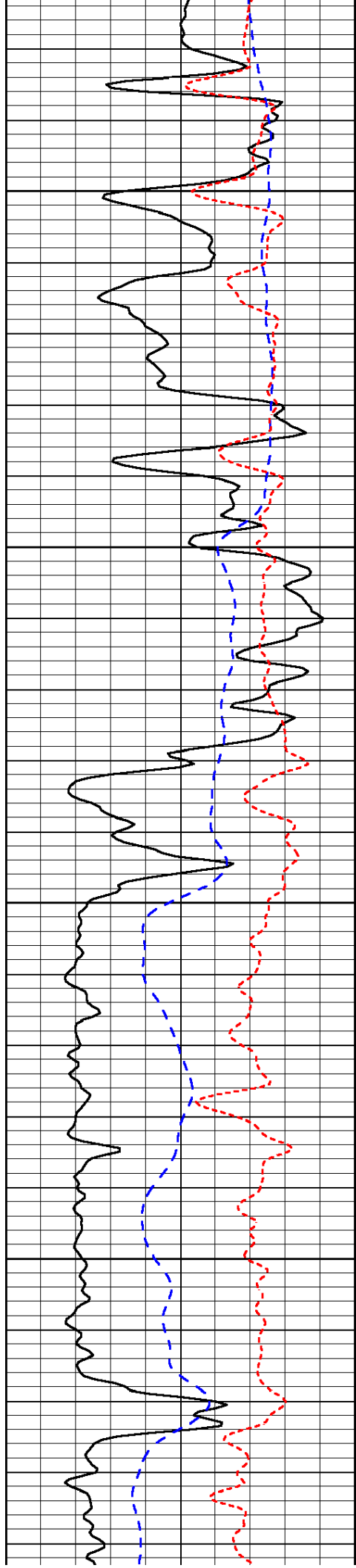


-31

-31

-31

-31

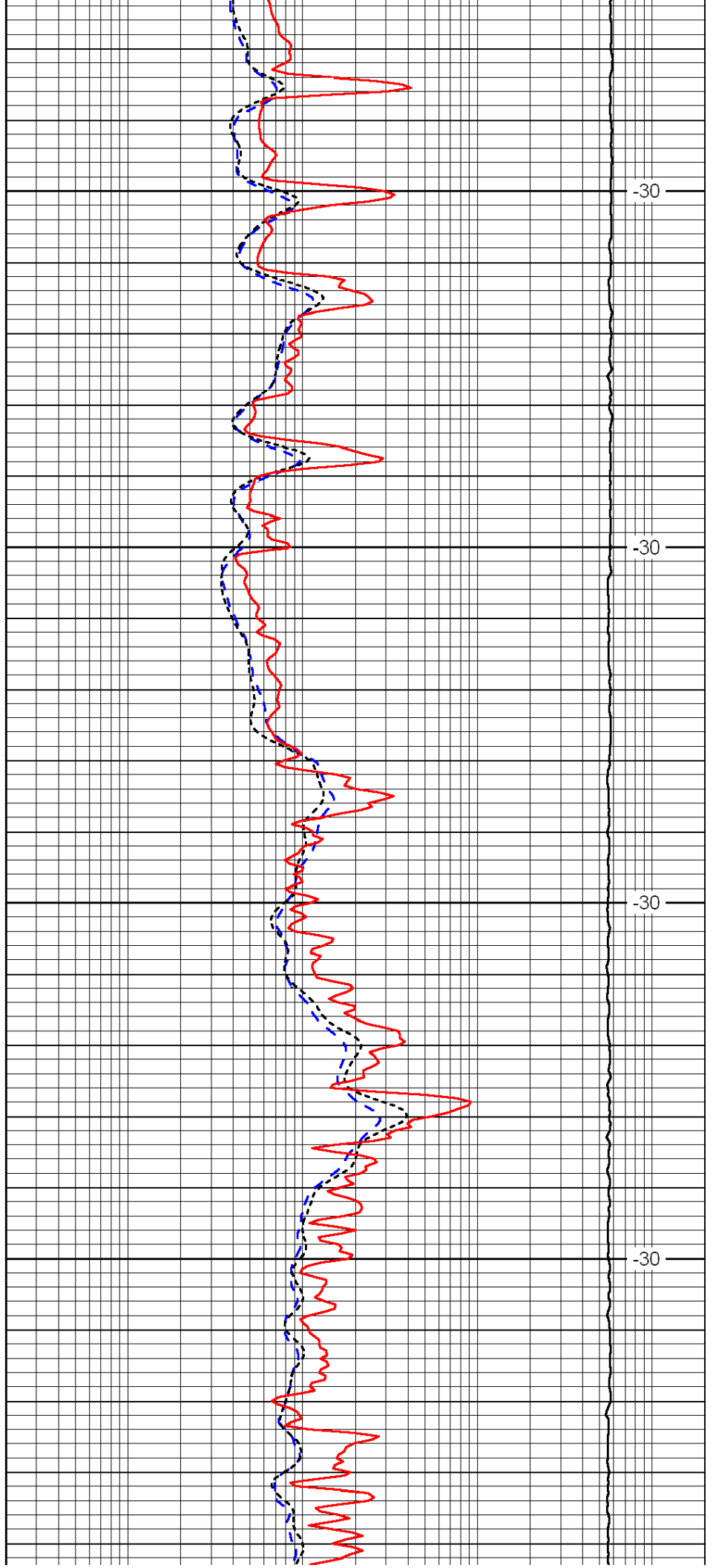


3450

3500

3550

3600

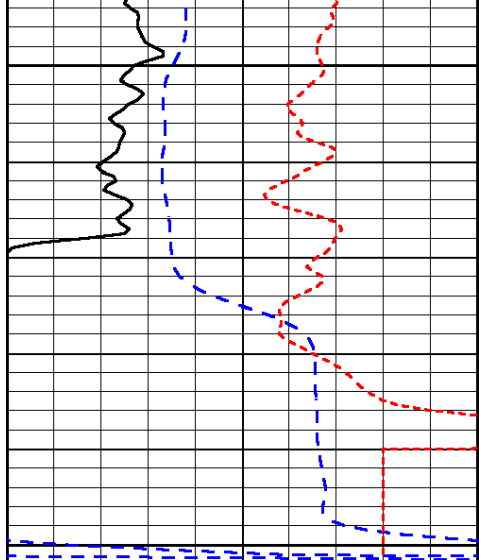


-30

-30

-30

-30



0	Gamma Ray	150
-200	SP (mV)	0
-160	Rxo / Rt	40



0.2	Deep Resistivity	2000
0.2	Medium Resistivity	2000
0.2	Shallow Resistivity	2000
15000	Line Tension	0

LSPD