



Microresistivity Log

DIGITAL LOG (785) 625-3858

API No.	15-101-22,273-00-00		
Company	Murfin Drilling Company Inc.		
Well	Harris No. 1-23		
Field			
County	Lane	State	Kansas
Location	1,000' FNL & 335' FEL		
Sec: 23	Twp: 18 S	Rge: 30 W	
Permanent Datum	Ground Level	Elevation 2848	Other Services CNL/CDL DIL/BHCS
Log Measured From	Kelly Bushing	11 Ft. Above Perm. Datum	
Drilling Measured From	Frotkelly Bushing		K.B. 2859 D.F. 2848 G.L. 2848

Date	1/7/2011	
Run Number	Two	
Depth Driller	4665	
Depth Logger	4671	
Bottom Logged Interval	4670	
Top Log Interval	3550	
Casing Driller	8.625 @ 226	
Casing Logger	223	
Bit Size	7.875	
Type Fluid in Hole	Chemical	
Salinity, ppm CL	3300	
Density / Viscosity	9.3	55
pH / Fluid Loss	6.0	10.5
Source of Sample	Flowline	
Rm @ Meas. Temp	1.70 @	60
Rmf @ Meas. Temp	1.28 @	60
Rmc @ Meas. Temp	2.30 @	60
Source of Rmf / Rmc	Charts	
Rm @ BHT	.83 @	123
Operating Rig Time	5 Hours	
Max Rec. Temp. F	123	
Equipment Number	10	
Location	Hays	
Recorded By	J Schuler	
Witnessed By	Robert Hendrix	

<<< Fold Here >>>

All interpretations are opinions based on inferences from electrical or other measurements and we cannot and do not guarantee the accuracy or correctness of any interpretation, and we shall not, except in the case of gross or willful negligence on our part, be liable or responsible for any loss, costs, damages, or expenses incurred or sustained by anyone resulting from any interpretation made by any of our officers, agents or employees. These interpretations are also subject to our general terms and conditions set out in our current Price Schedule.

Comments

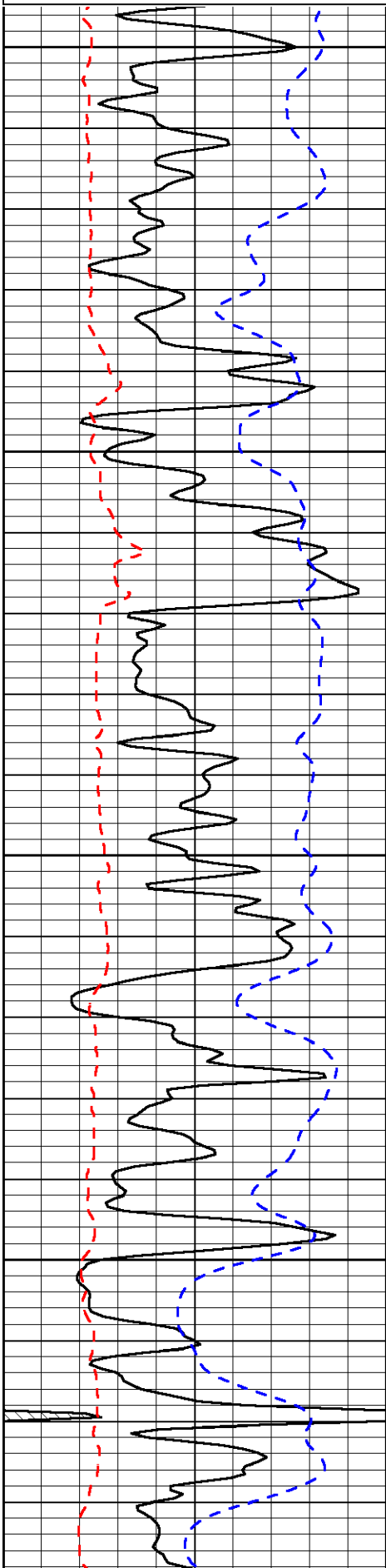
Thank you for using Log-Tech, Inc.
(785) 625-3858

Dighton, 7 Miles West to Eagle Road, South 1/8th, West Into

Database File: murfin_harris_1_23hd.db
 Dataset Pathname: dil/murstk
 Presentation Format: micro
 Dataset Creation: Fri Jan 07 18:15:12 2011
 Charted by: Depth in Feet scaled 1:240

0	Gamma Ray	150
6	MCAL (GAPI)	16
2.875	Mud Cake (GAPI)	7.875
-200	SP	0

0	Micro Inverse 1 X 1	40
0	Micro Normal 2"	40
10000	Line Weight	0
		LSPD

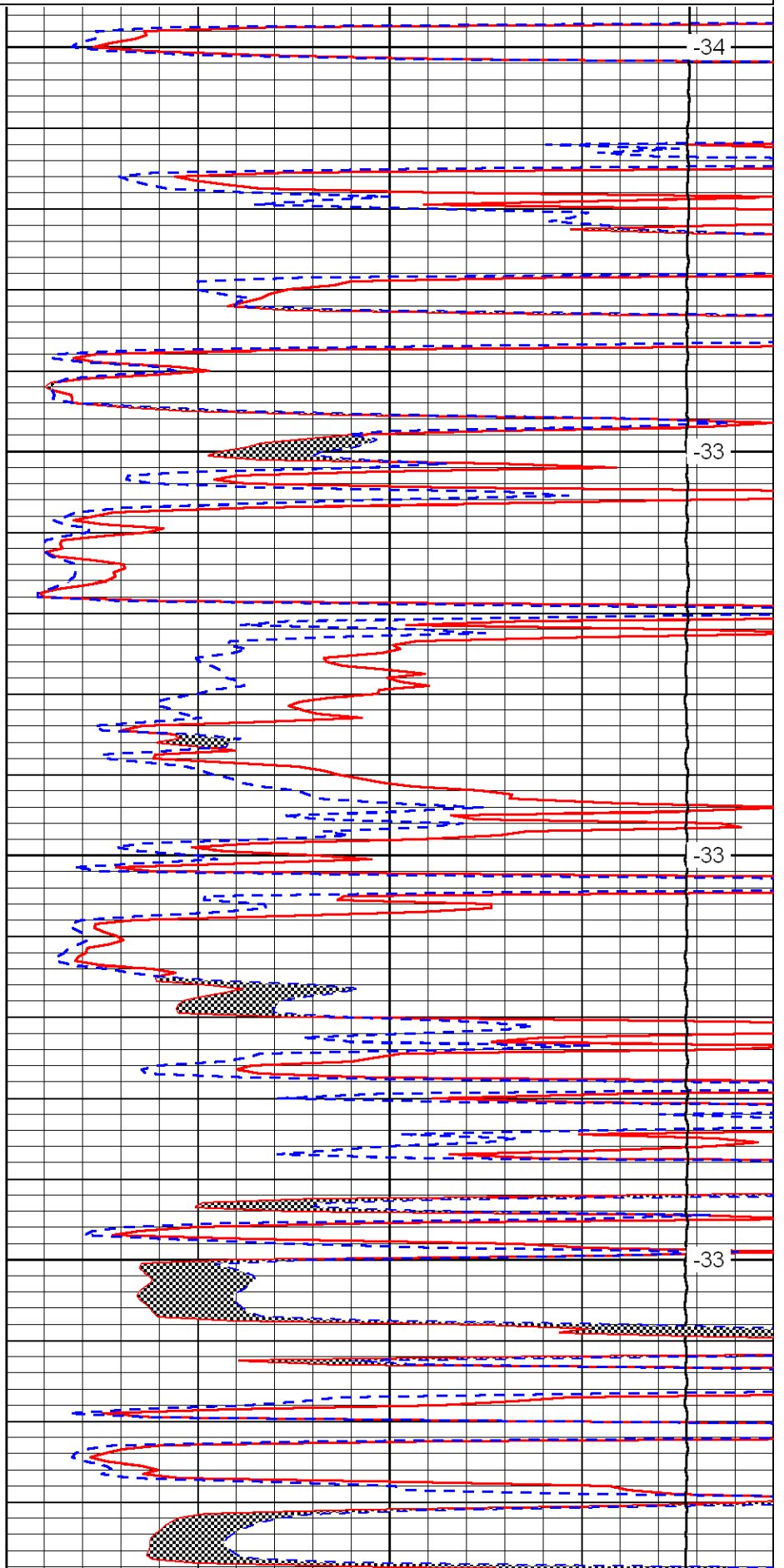


3550

3600

3650

3700

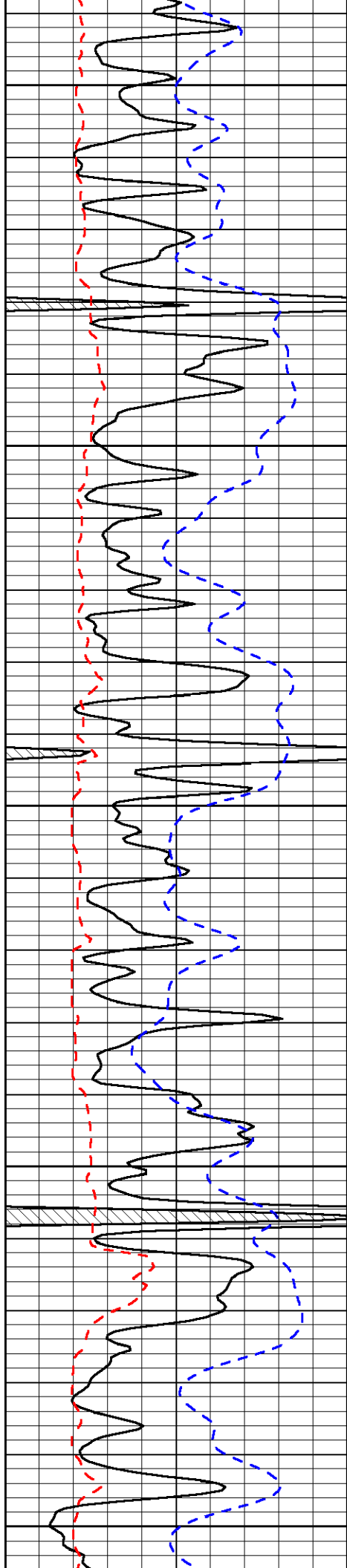


-34

-33

-33

-33



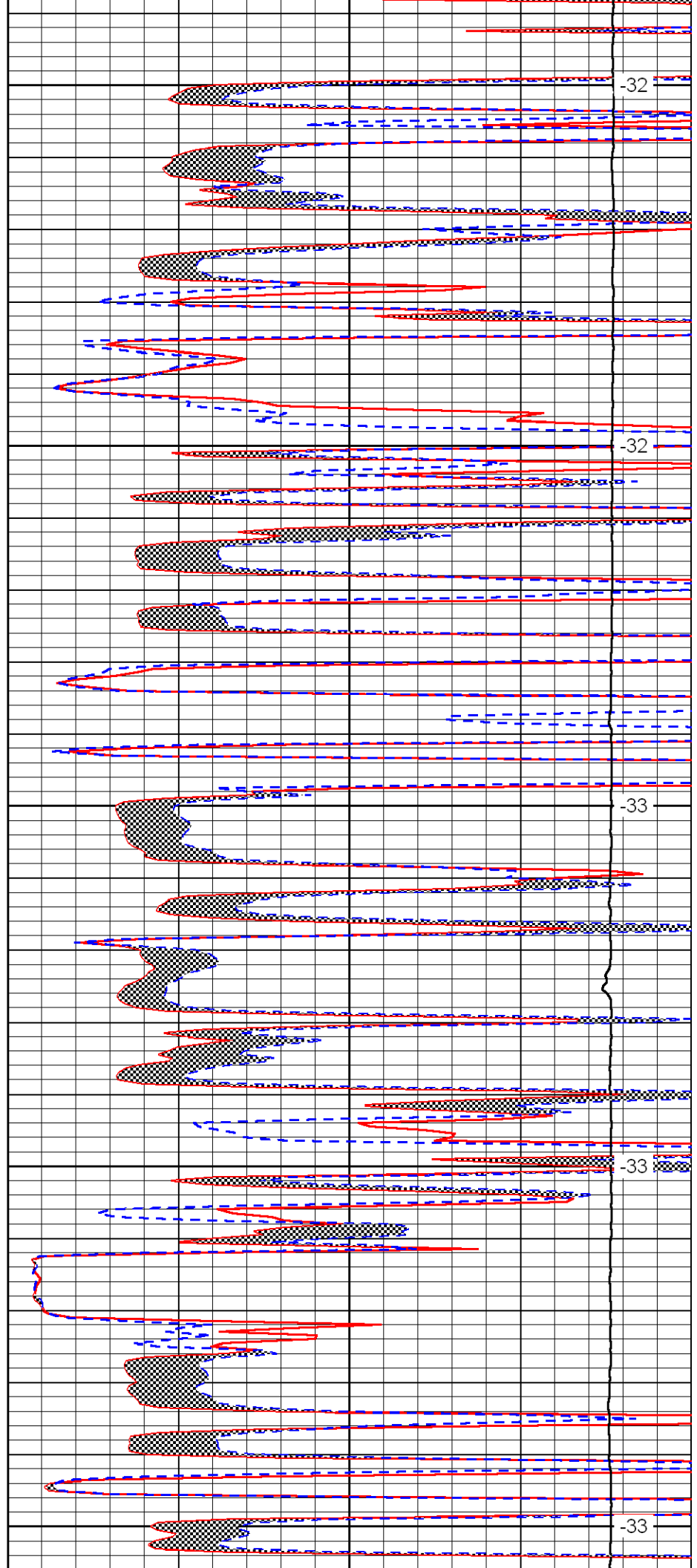
3750

3800

3850

3900

3950



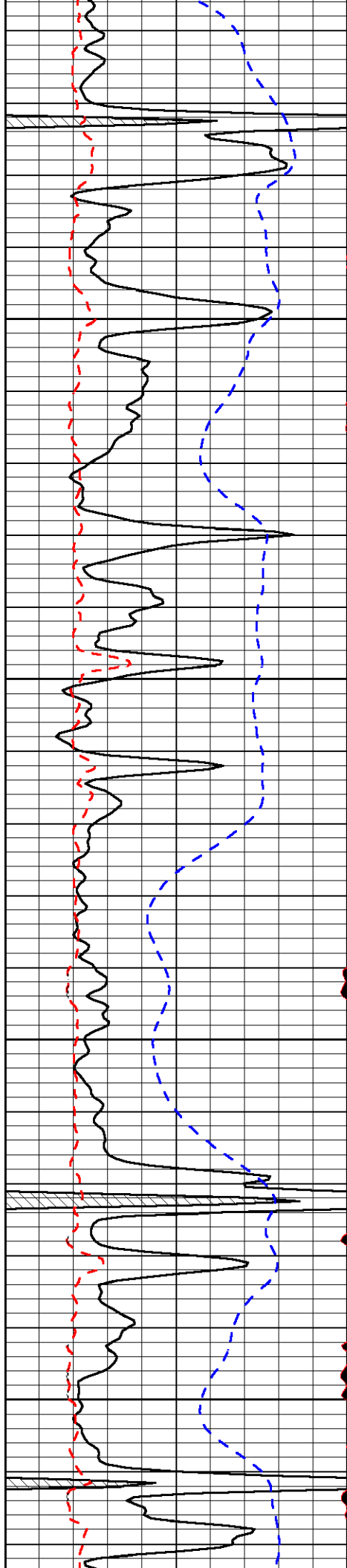
-32

-32

-33

-33

-33

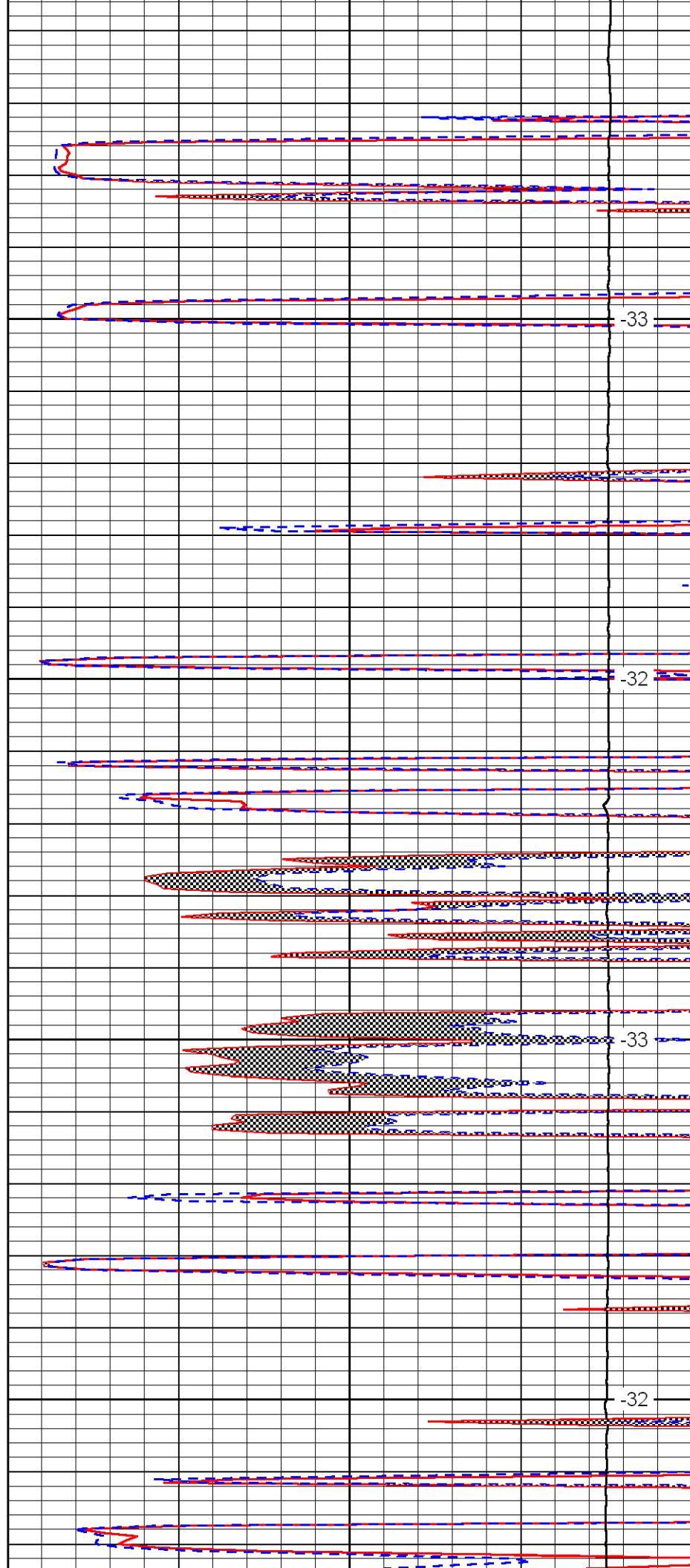


4000

4050

4100

4150

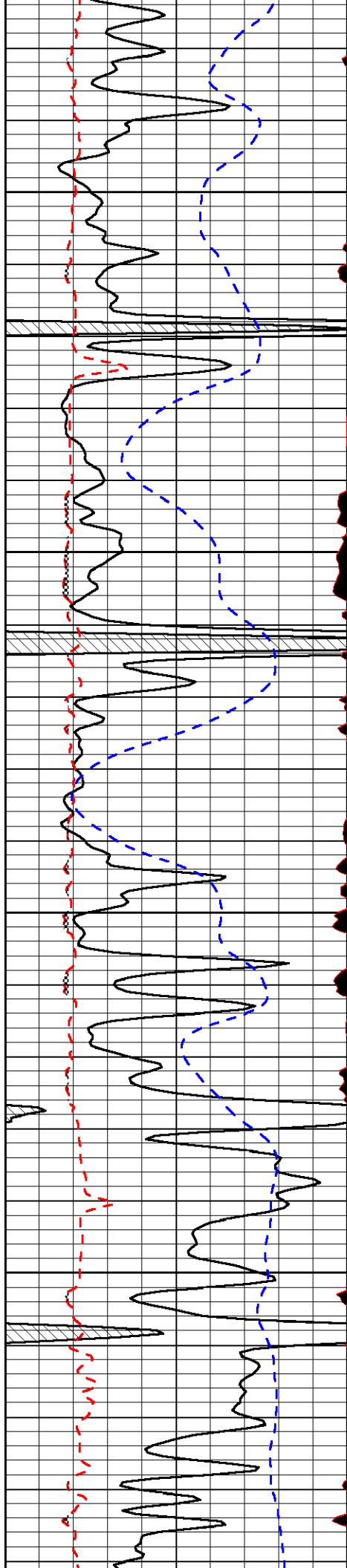


-33

-32

-33

-32

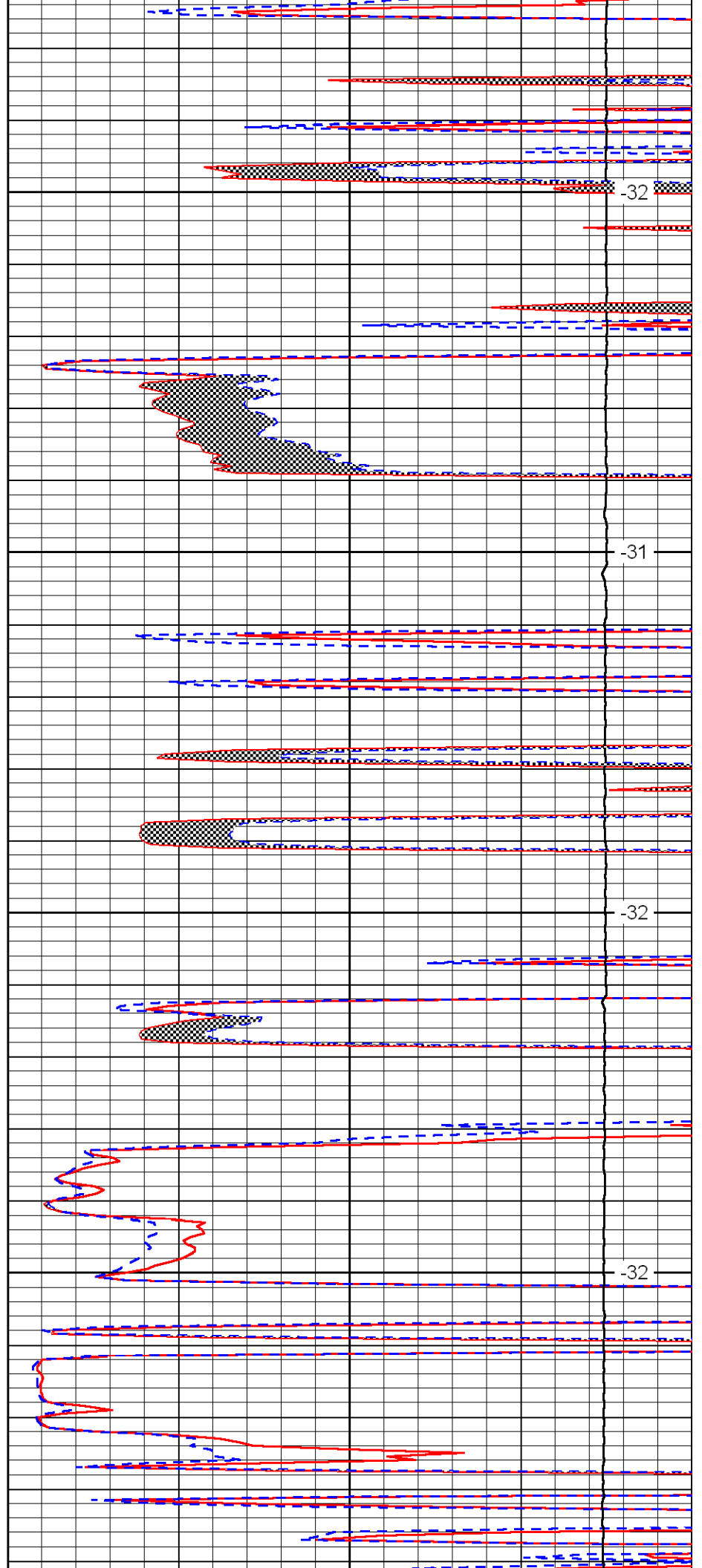


4200

4250

4300

4350

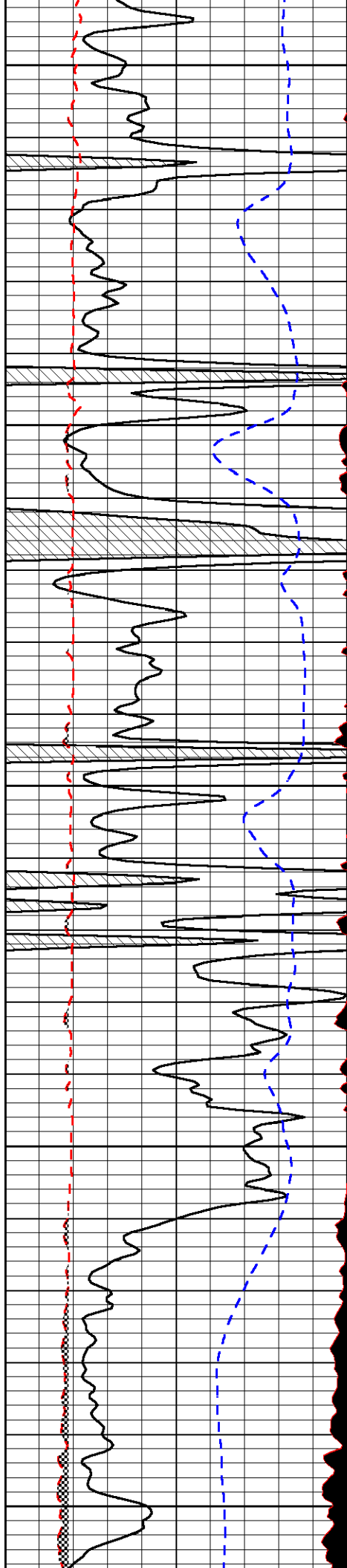


-32

-31

-32

-32



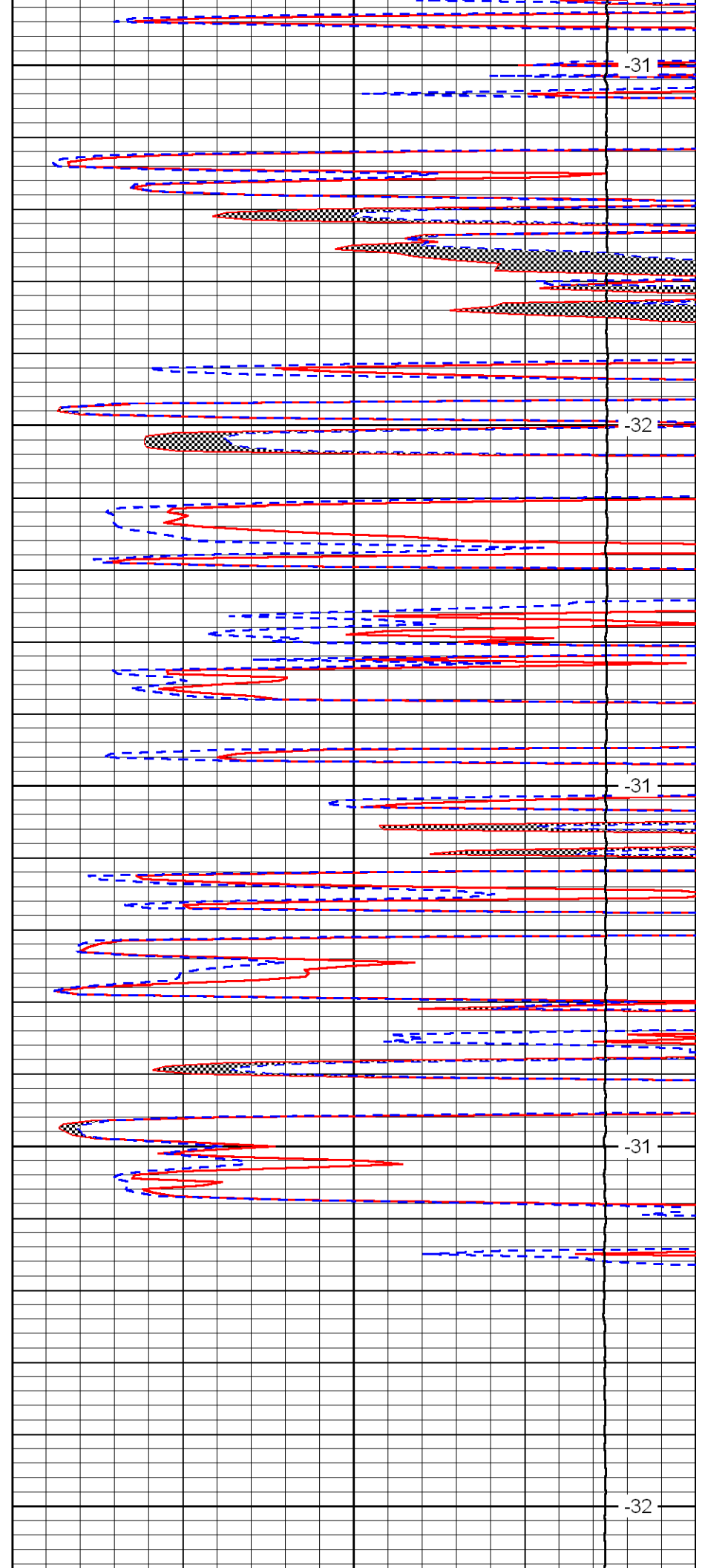
4400

4450

4500

4550

4600



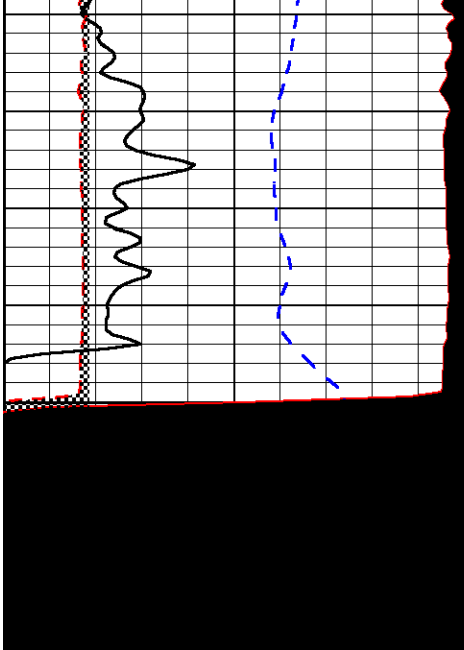
-31

-32

-31

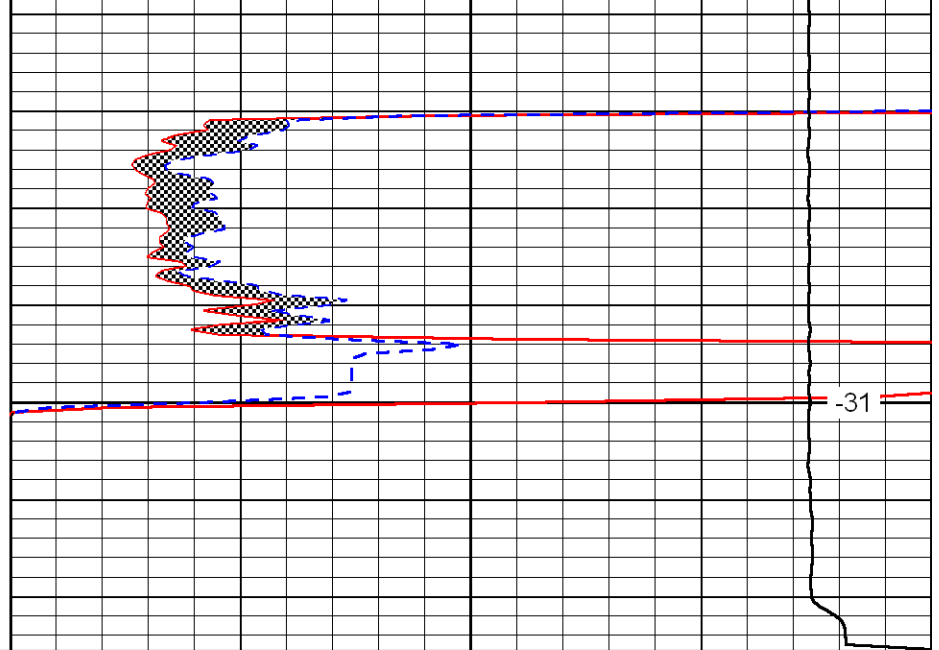
-31

-32



0	Gamma Ray	150
6	MCAL (GAPI)	16
2.875	Mud Cake (GAPI)	7.875
-200	SP	0

4650



0	Micro Inversese 1 X 1	40
0	Micro Normal 2''	40
10000	Line Weight	0

-31

LSPD