



Dual Compensated
Porosity Log

DIGITAL LOG (785) 625-3858

API No. 15-101-22,273-00-00	Company Murfin Drilling Company Inc.	Location 1,000' FNL & 335' FEL	Other Services DIL MEL/BHCS
	Well Harris No. 1-23		Elevation K.B. 2859 D.F. G.L. 2848
	Field		
	County Lane		
		State Kansas	
	Sec: 23	Twp: 18 S	Rge: 30 W
Permanent Datum	Ground Level	Elevation 2848	
Log Measured From	Kelly Bushing	11 Ft. Above Perm. Datum	
Drilling Measured From	Kelly Bushing		

Date	1/7/2011
Run Number	One
Type Log	CNL / CDL
Depth Driller	4665
Depth Logger	4671
Bottom Logged Interval	4650
Top Logged Interval	3550
Type Fluid In Hole	Chemical
Salinity, PPM CL	3300
Density	9.3
Level	Full
Max. Rec. Temp. F	123
Operating Rig Time	5 Hours
Equipment -- Location	10 Hays
Recorded By	J Schuler
Witnessed By	Robert Hendrix

Borehole Record		Casing Record					
Run No	Bit	From	To	Size	Wgt.	From	To
One	12.25	00	226	8.625	23#	00	226
Two	7.875	226					

<<< Fold Here >>>

All interpretations are opinions based on inferences from electrical or other measurements and we cannot and do not guarantee the accuracy or correctness of any interpretation, and we shall not, except in the case of gross or willful negligence on our part, be liable or responsible for any loss, costs, damages, or expenses incurred or sustained by anyone resulting from any interpretation made by any of our officers, agents or employees. These interpretations are also subject to our general terms and conditions set out in our current Price Schedule.

Comments

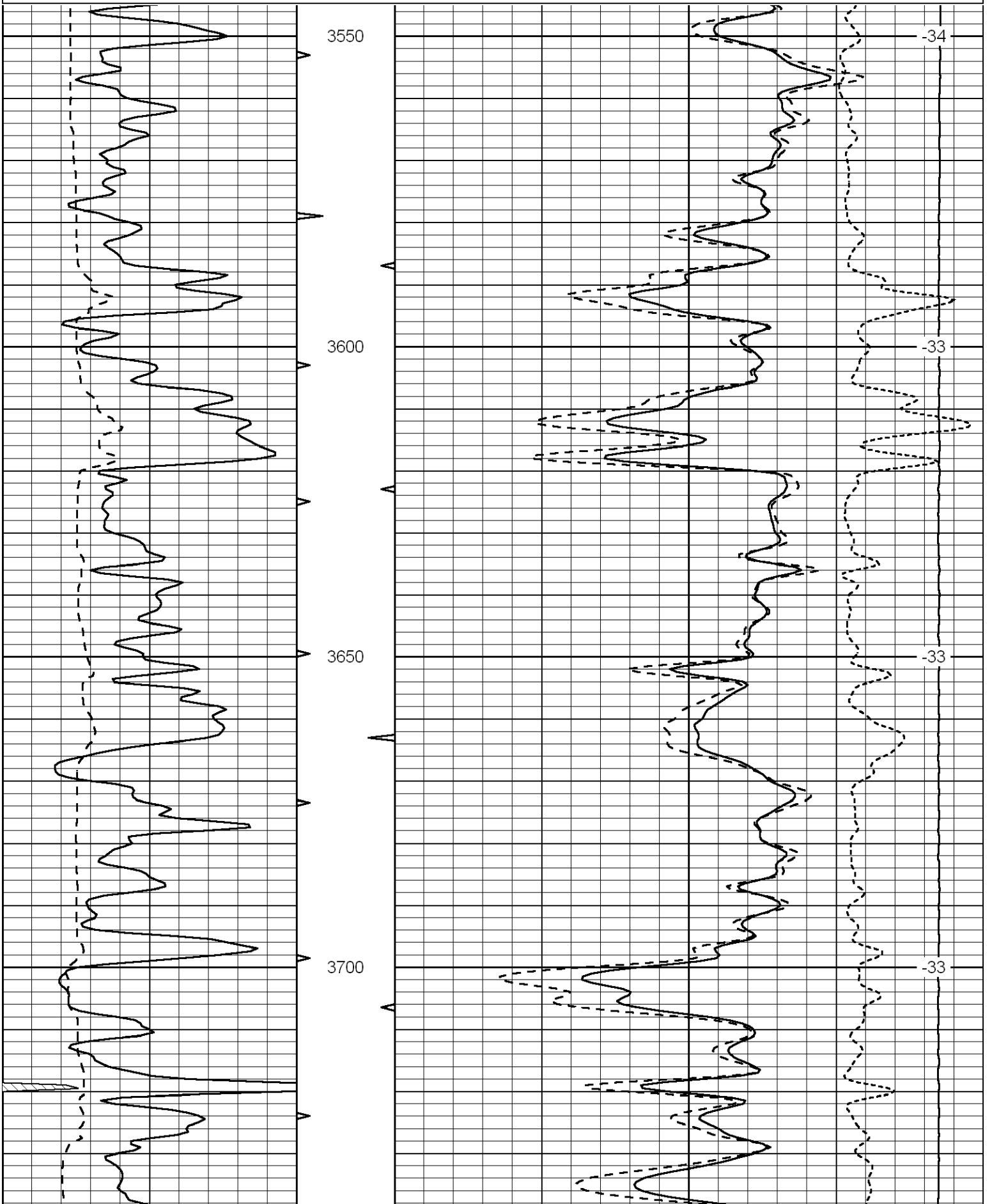
Thank you for using Log-Tech, Inc.
(785) 625-3858

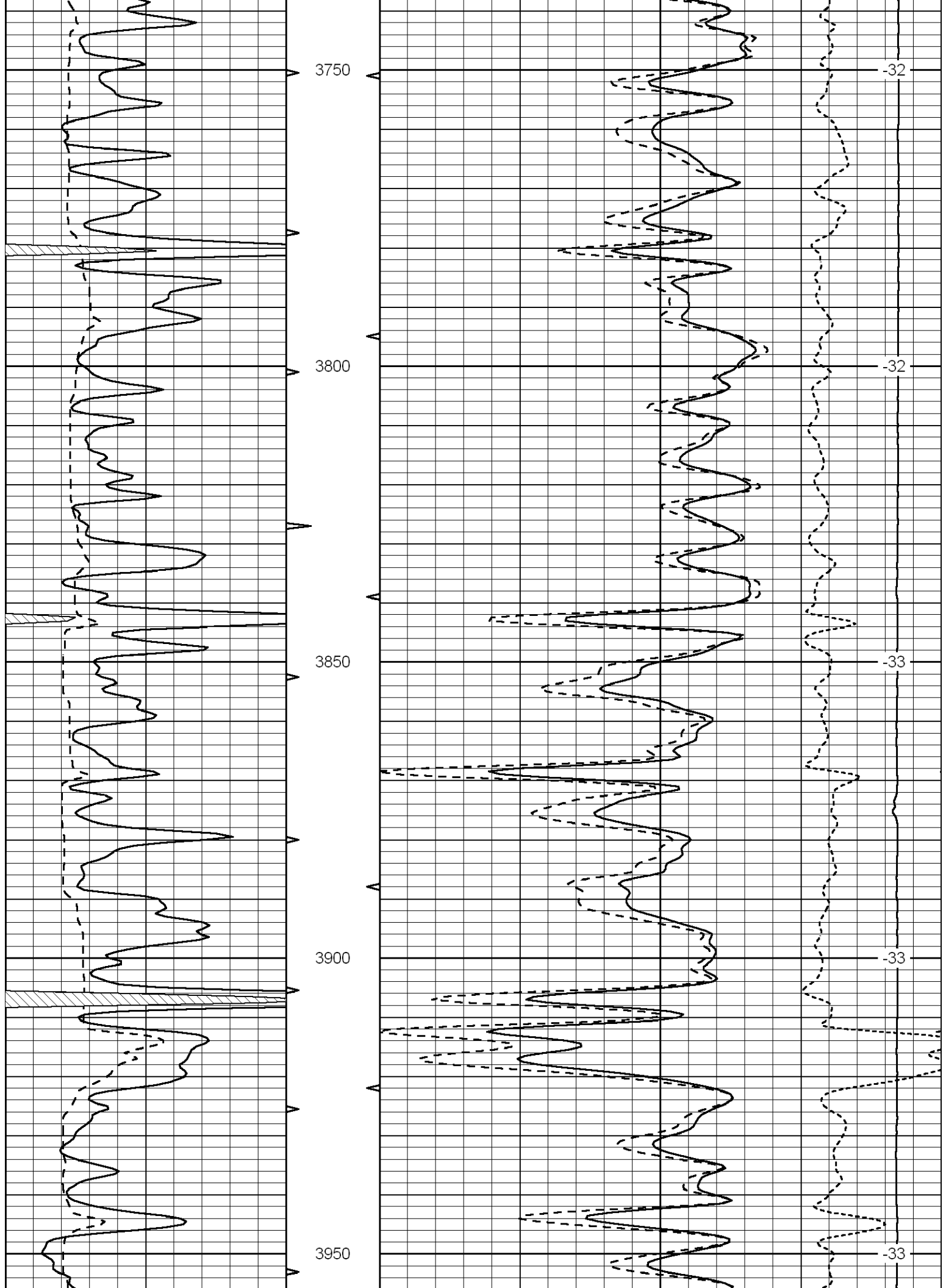
Dighton, 7 Miles West to Eagle Road, South 1/8th, West Into

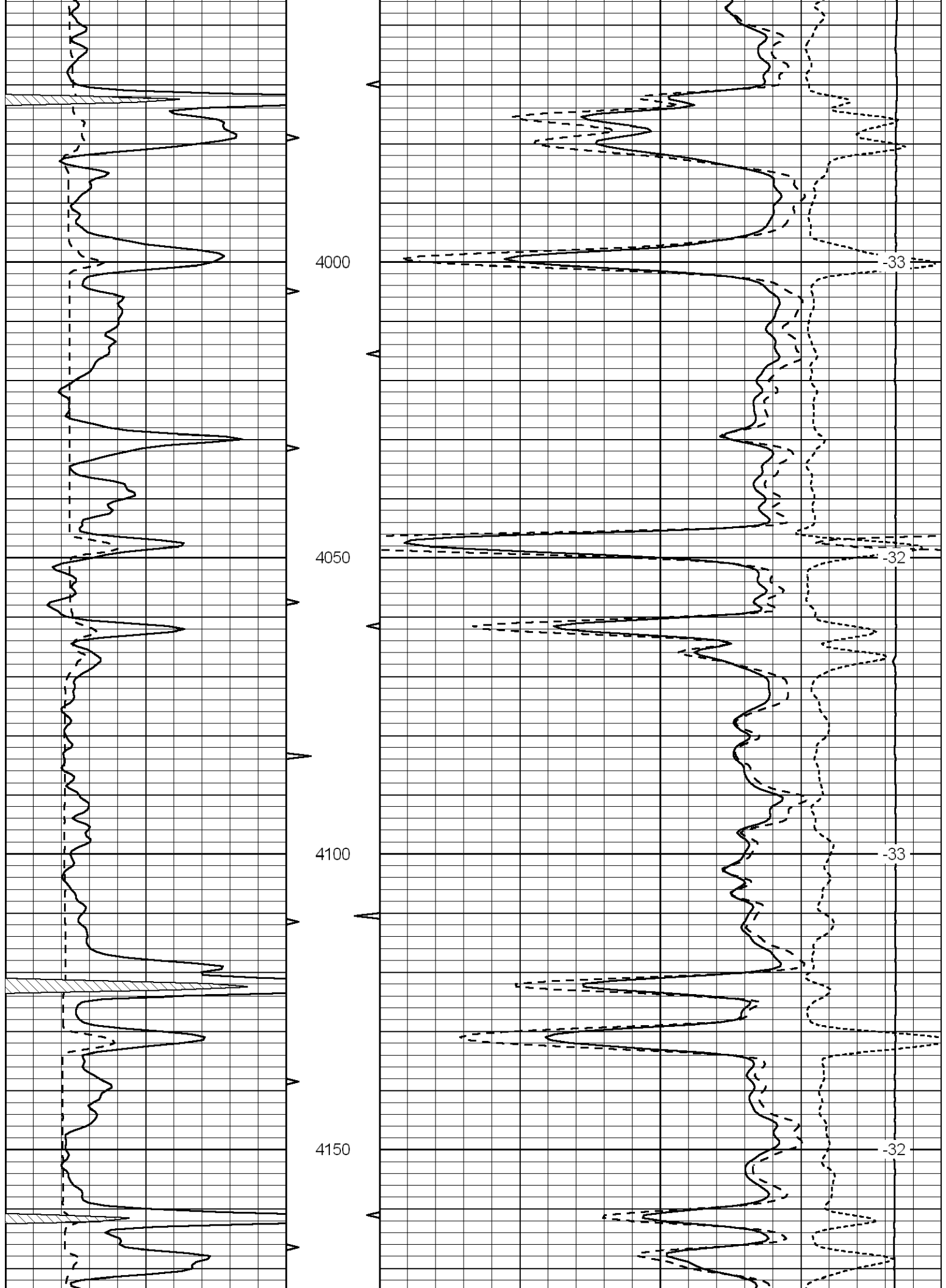
Database File: murfin_harris_1_23hd.db
 Dataset Pathname: dil/murstk
 Presentation Format: cdl
 Dataset Creation: Fri Jan 07 18:15:12 2011
 Charted by: Depth in Feet scaled 1:240

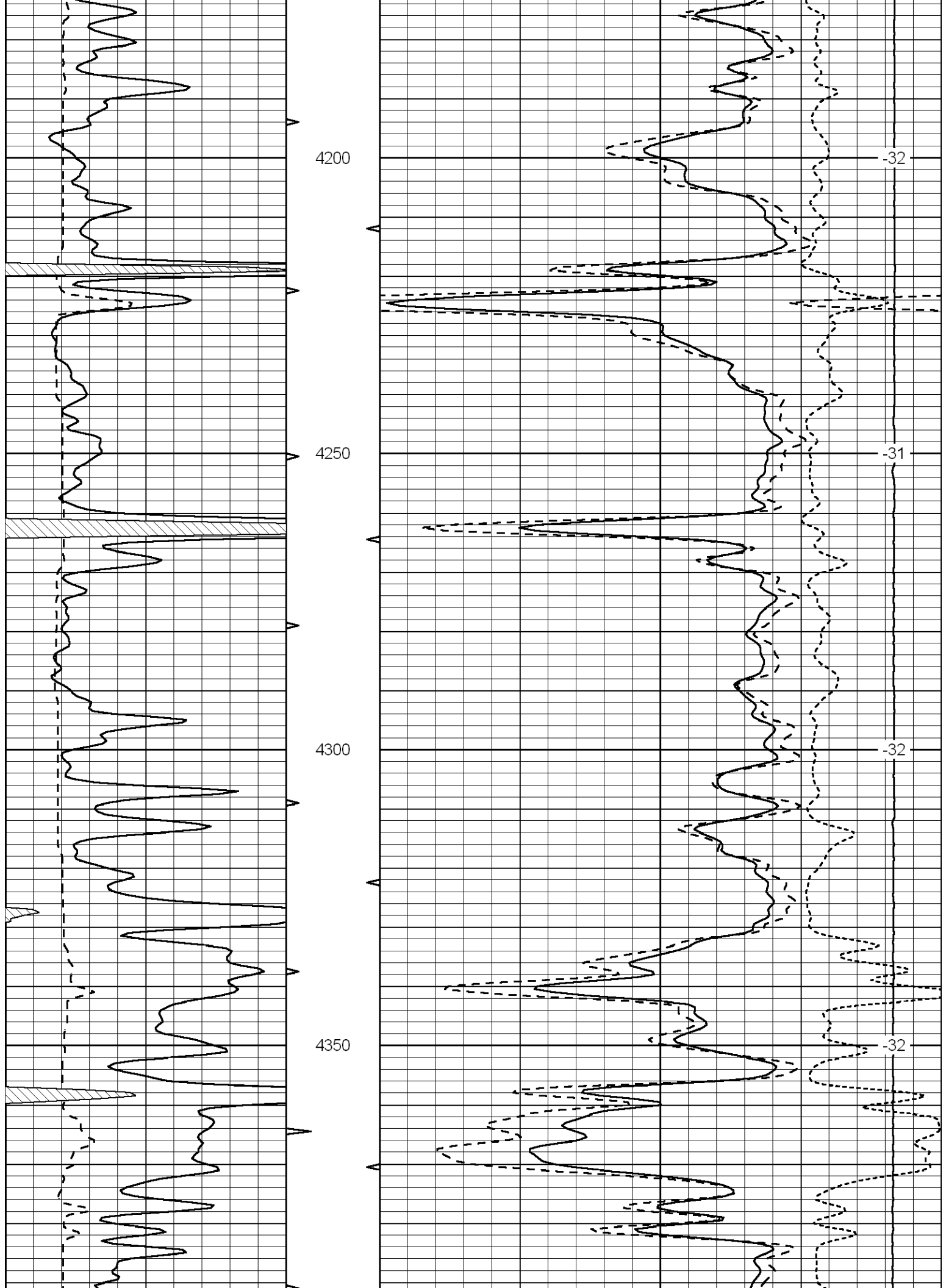
0	Gamma Ray	150
6	Caliper (GAPI)	16

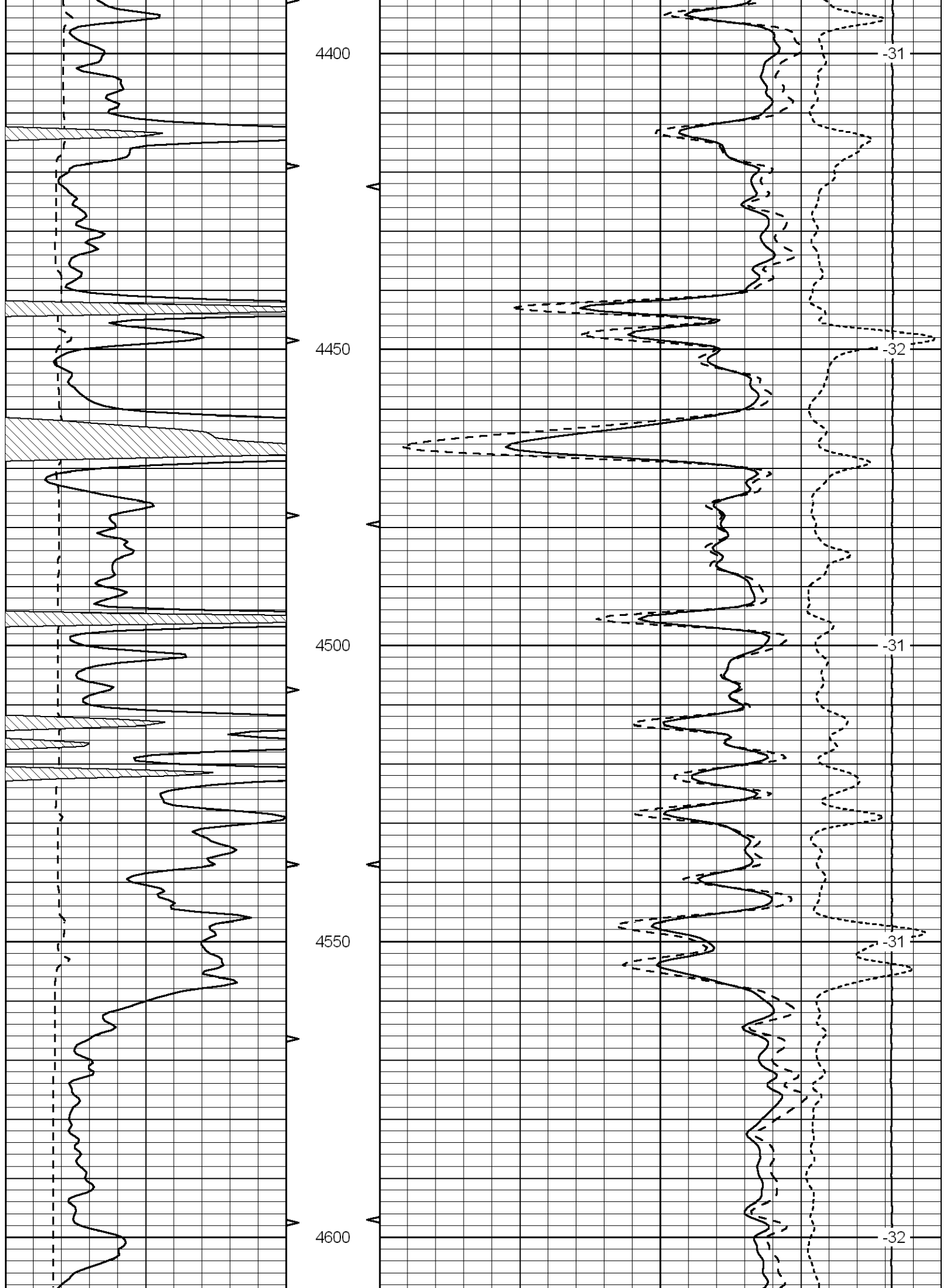
30	Compensated Density	-10
2	Bulk Density	3
15000	Line Tension	0
	-0.25 Correction	0.25
	LSPD	

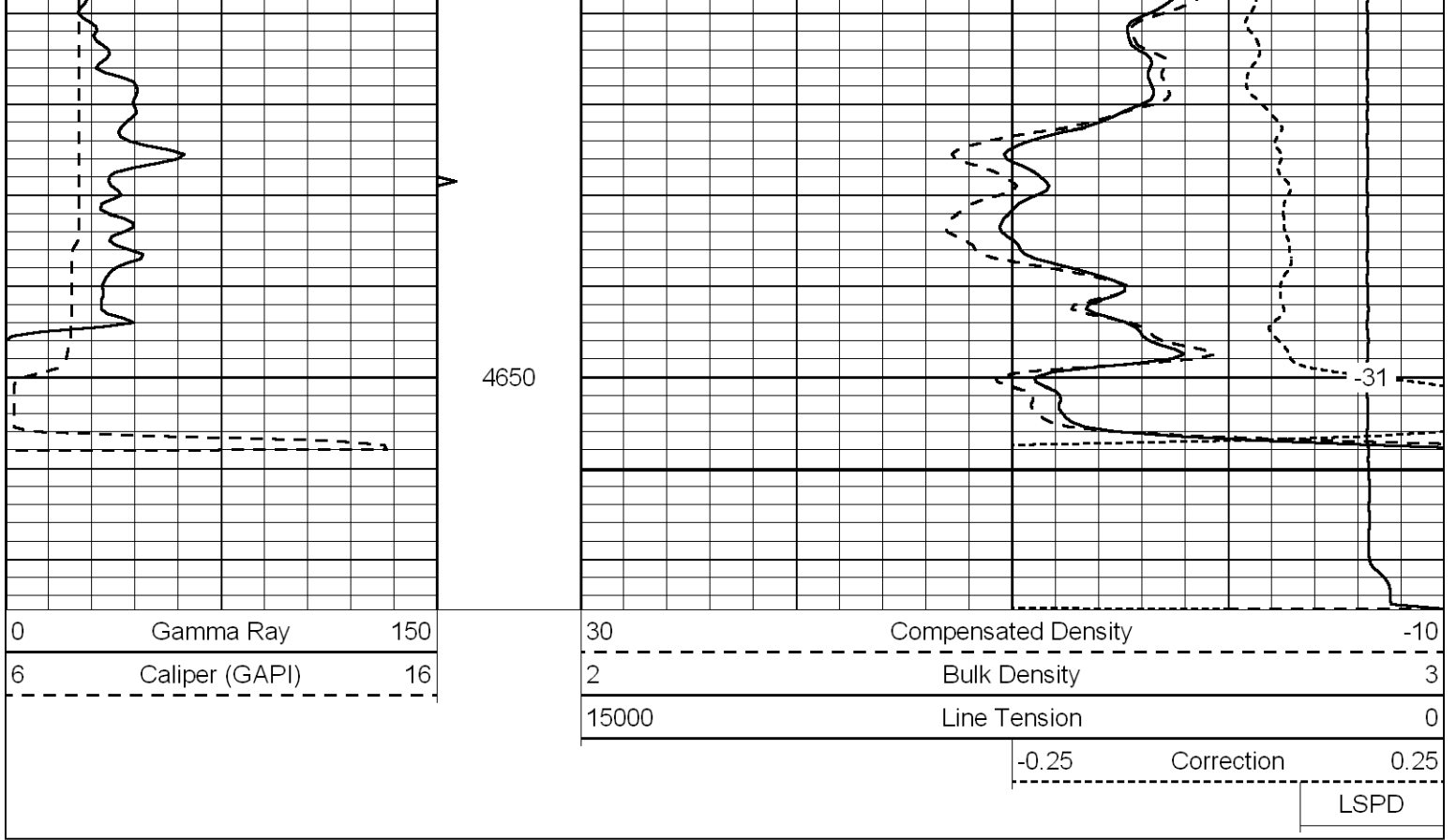












Database File: murfin_harris_1_23hd.db
 Dataset Pathname: dil/murstk
 Presentation Format: cndlspec
 Dataset Creation: Fri Jan 07 18:15:12 2011
 Charted by: Depth in Feet scaled 1:240

