



DIGITAL LOG (785) 625-3858

Dual Induction Log

API No. 15-077-21,717-00-00

Company **Charles N Griffin**
 Well **Ferguson No. 1**
 Field **Little Sandy Creek East**
 County **Harper** State **Kansas**

Location **SE SW NW**
2310' FNL & 990' FWL

Sec: **29** Twp: **32S** Rge: **9W**

Other Services
 CNL/CDL

Permanent Datum **Ground Level** Elevation **1399**
 Log Measured From **Kelly Bushing** 9 Ft. Above Perm. Datum
 Drilling Measured From **Kelly Bushing**

Elevation **K.B. 1408**
D.F. 1399
G.L. 1399

Date	11/11/2010
Run Number	One
Depth Driller	4800
Depth Logger	4799
Bottom Logged Interval	4798
Top Log Interval	250
Casing Driller	8.625 @ 269
Casing Logger	264
Bit Size	7.875
Type Fluid in Hole	Chemical
Salinity, ppm CL	12,000
Density / Viscosity	9.2 43
pH / Fluid Loss	11.0 9.2
Source of Sample	Flowline
Rm @ Meas. Temp	.3 @ 68
Rmf @ Meas. Temp	.23 @ 68
Rmc @ Meas. Temp	.41 @ 68
Source of Rmf / Rmc	Charts
Rm @ BHT	.16 @ 126
Operating Rig Time	3 Hours
Max Rec. Temp. F	126
Equipment Number	15
Location	Hays
Recorded By	Mike Garrison
Witnessed By	Bruce A Reed

<<< Fold Here >>>

All interpretations are opinions based on inferences from electrical or other measurements and we cannot and do not guarantee the accuracy or correctness of any interpretation, and we shall not, except in the case of gross or willful negligence on our part, be liable or responsible for any loss, costs, damages, or expenses incurred or sustained by anyone resulting from any interpretation made by any of our officers, agents or employees. These interpretations are also subject to our general terms and conditions set out in our current Price Schedule.

Comments

Thank you for using Log-Tech, Inc.
 (785) 625-3858

Sharon, East to Countyline, 1 South, 1 1/10 East South Into

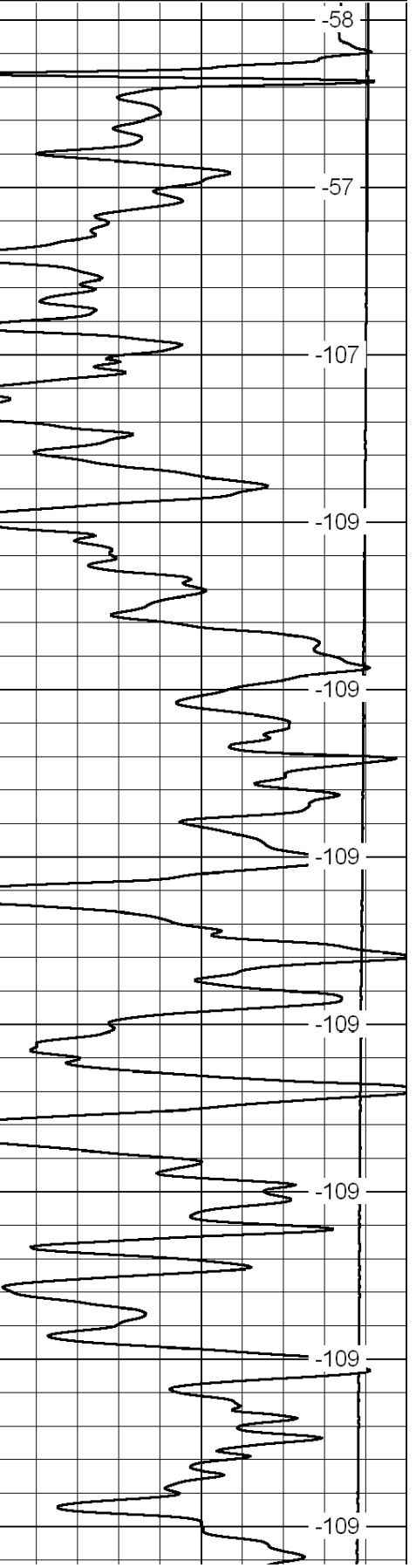
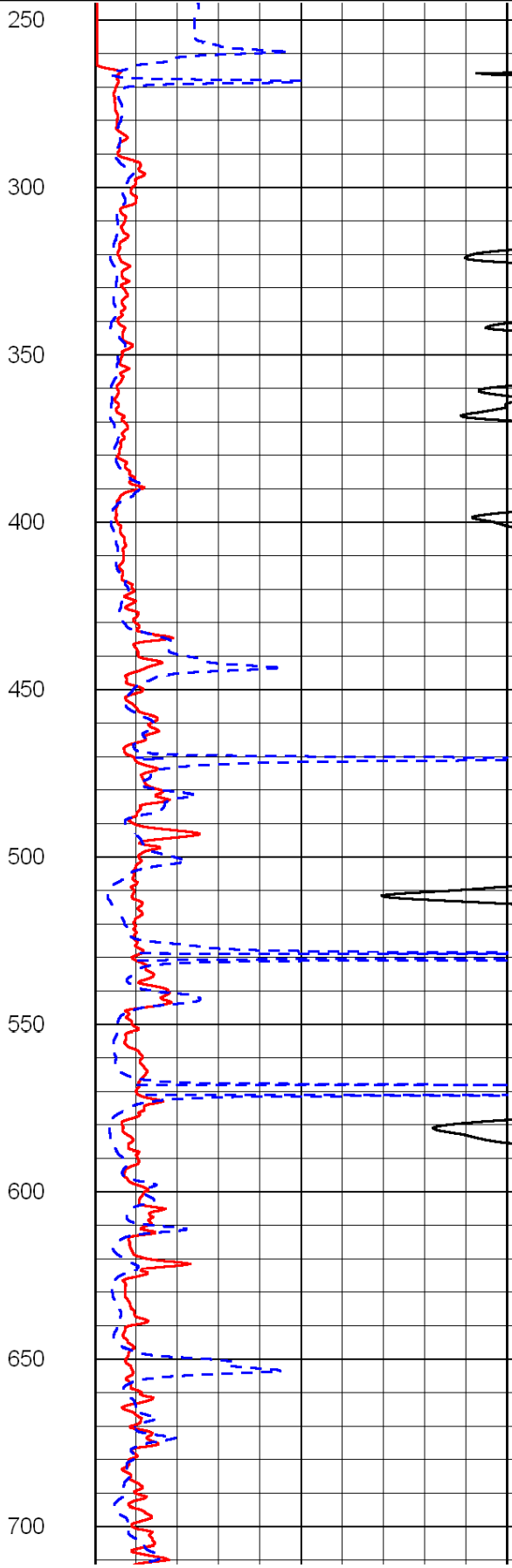
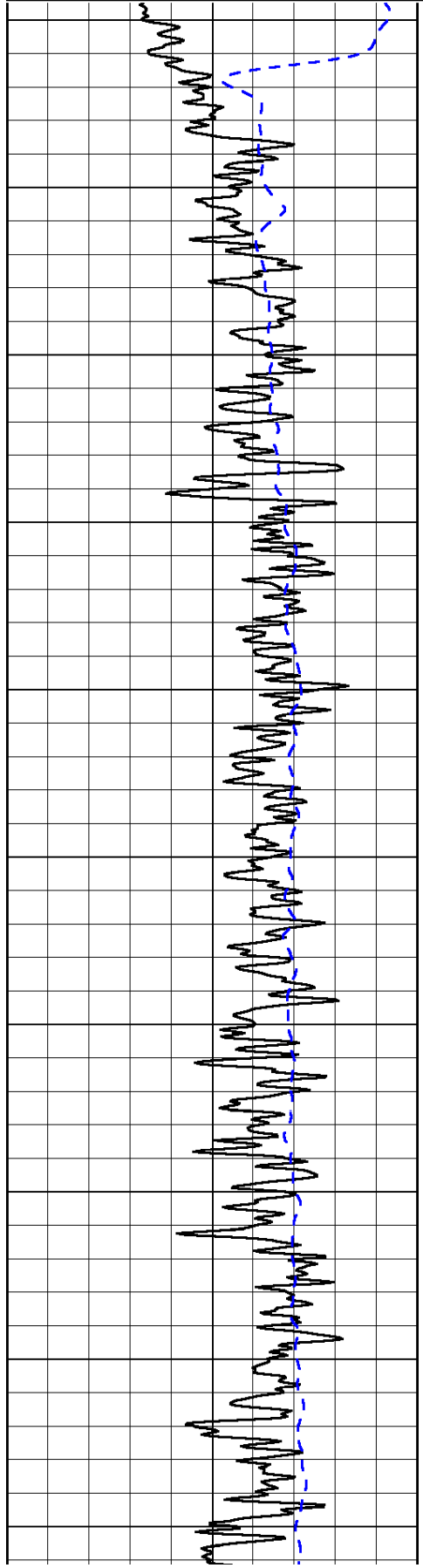
0	Gamma Ray	150
-200	SP (mV)	0

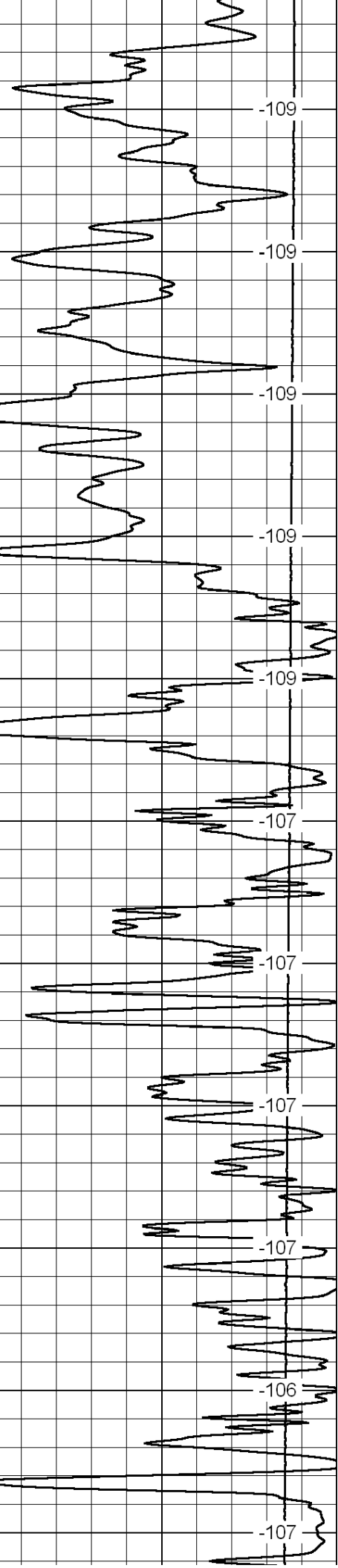
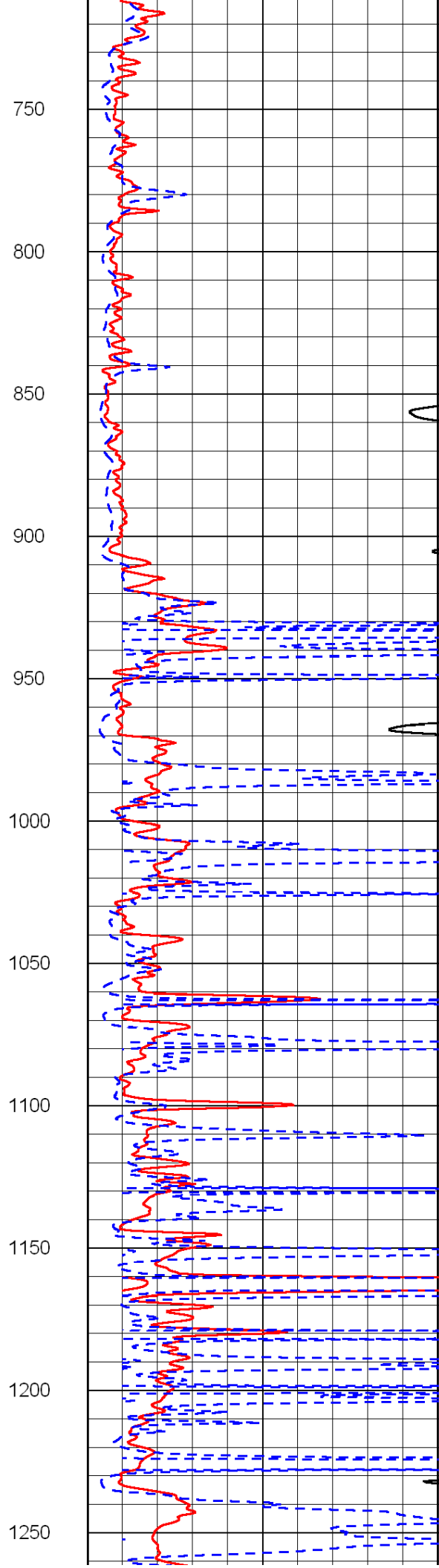
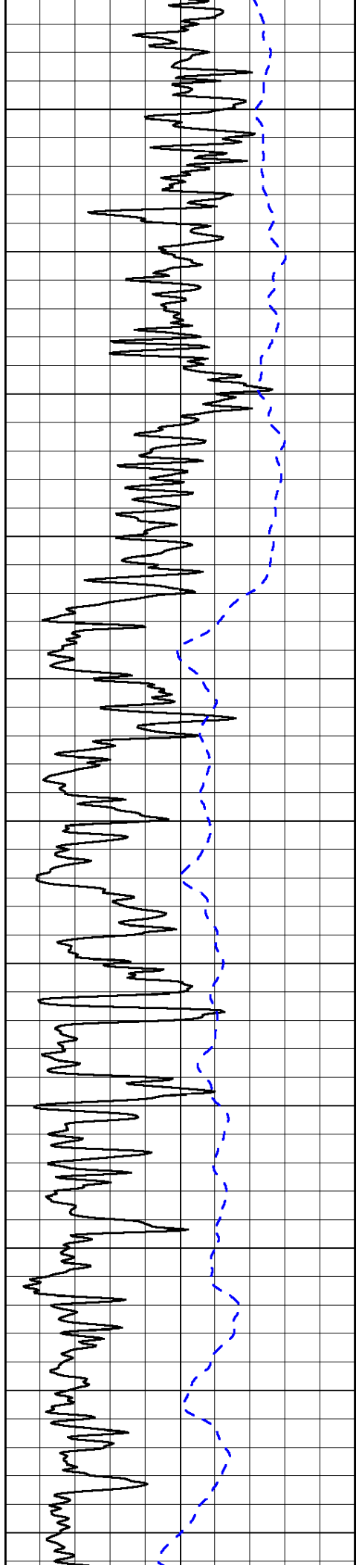
0	Shallow Resistivity	50
0	Deep Resistivity	50

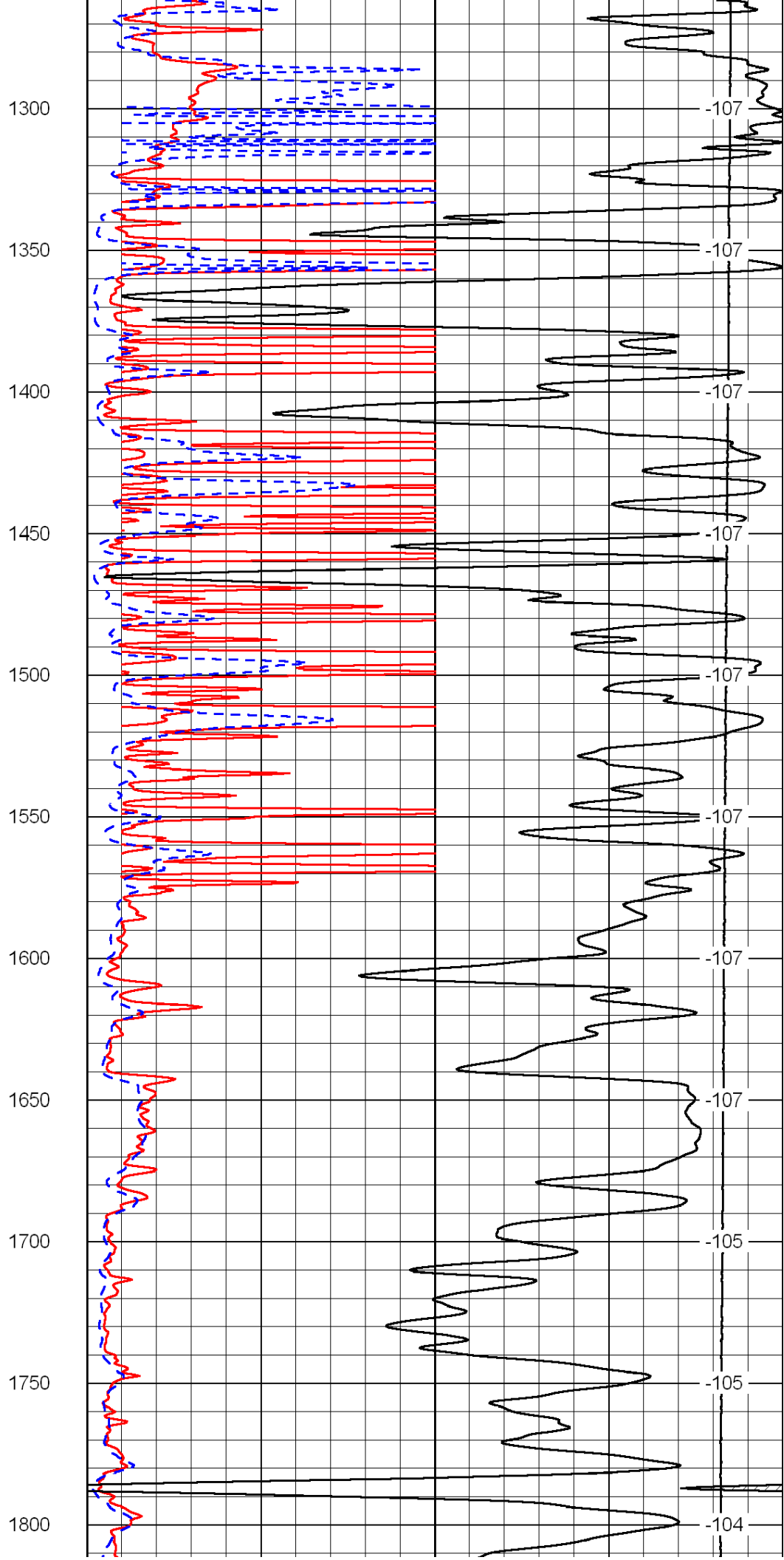
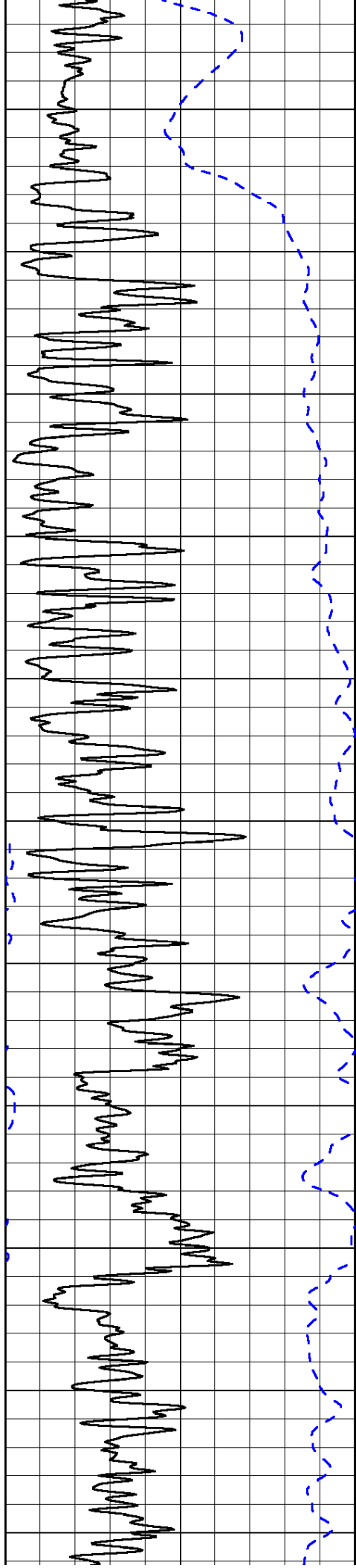
LSPD

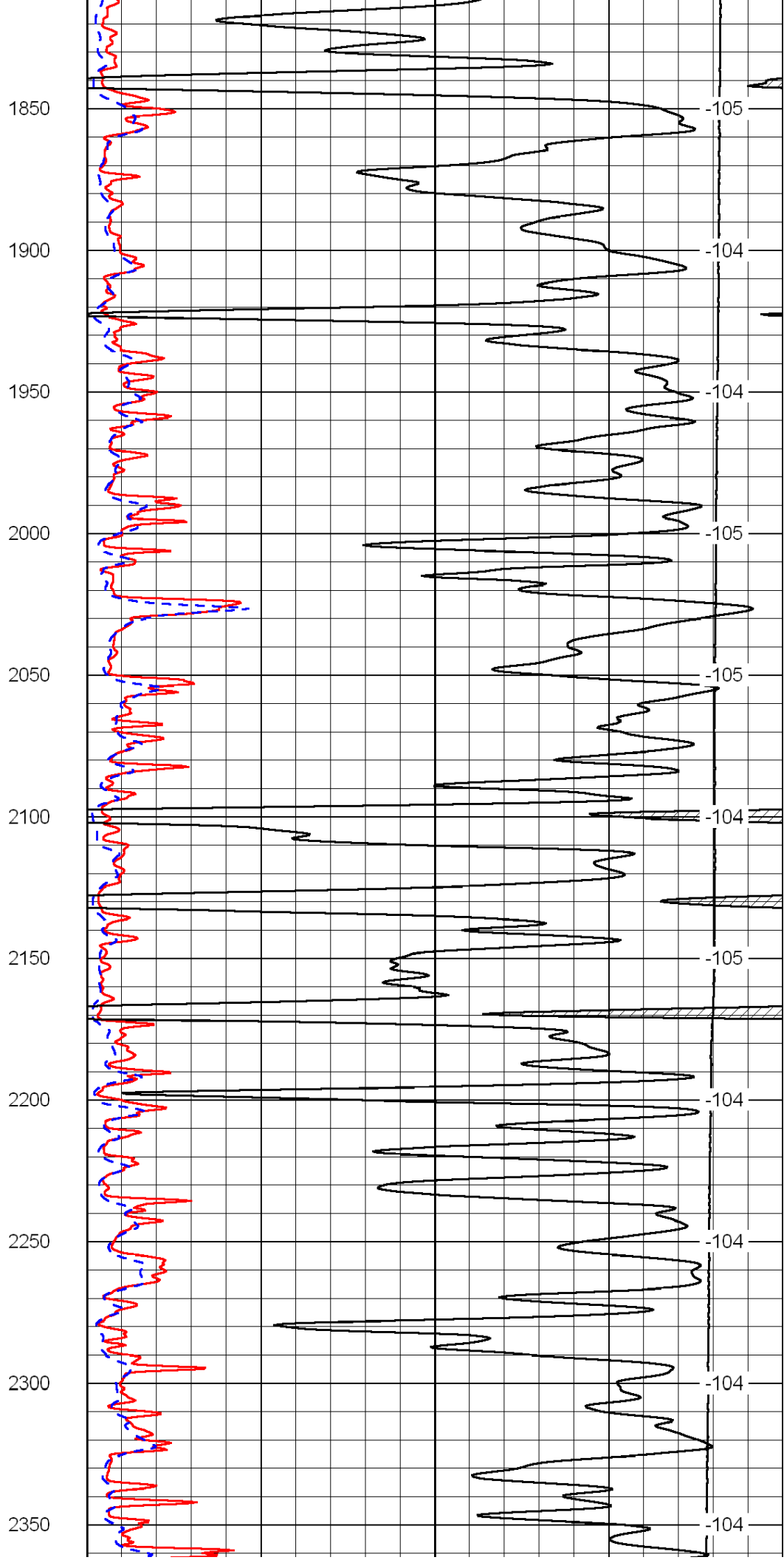
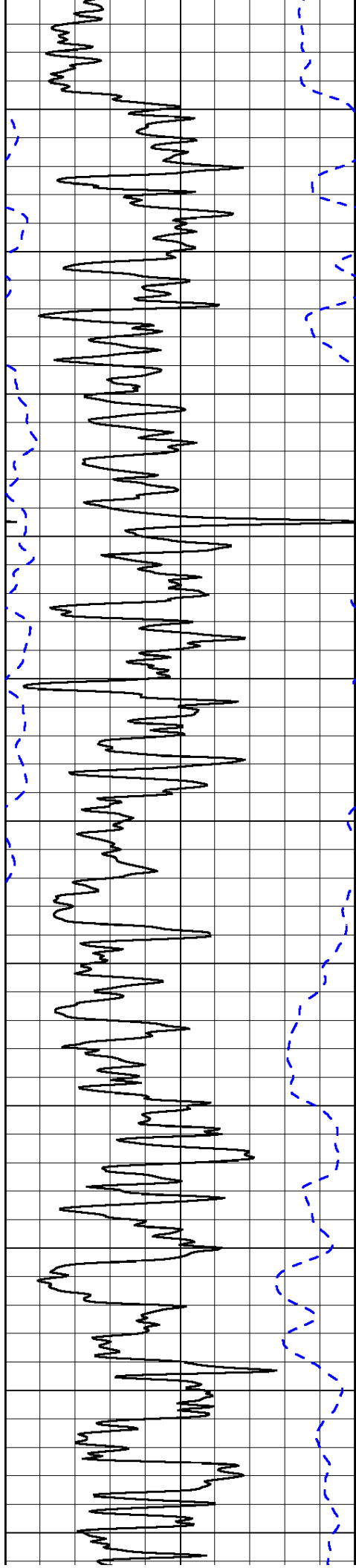
1000	Conductivity	0
15000	Line Tension	0

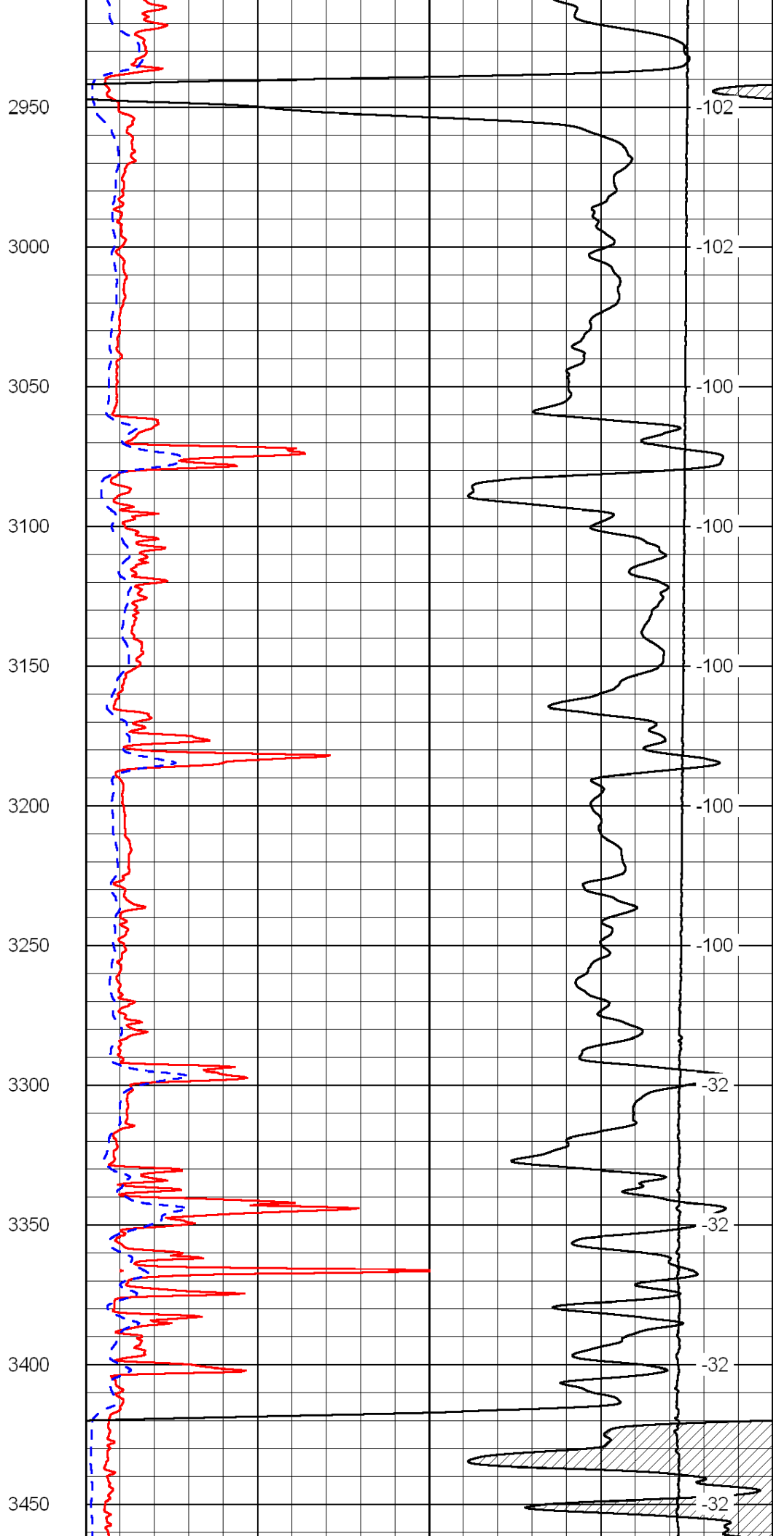
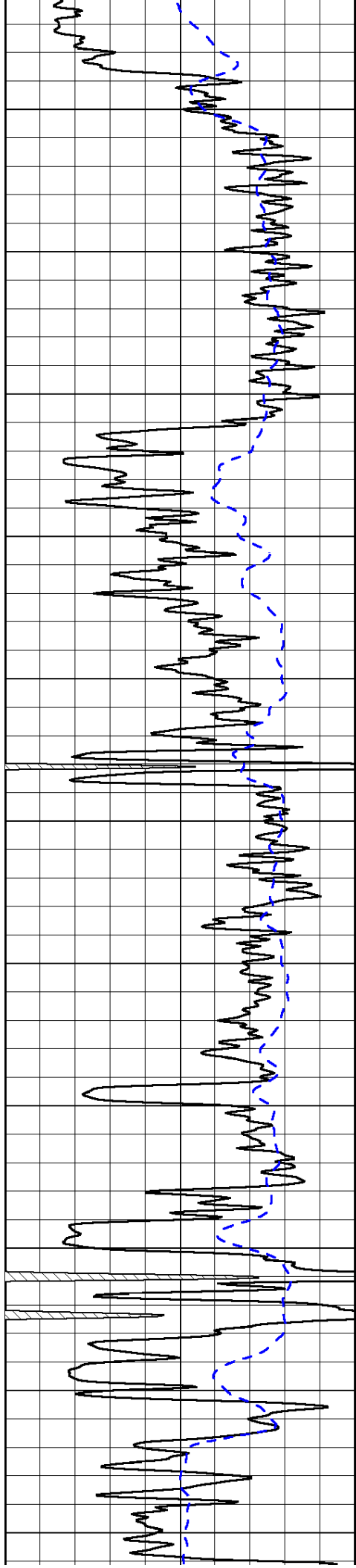
50	Shallow Resistivity	500
50	Deep Resistivity	500

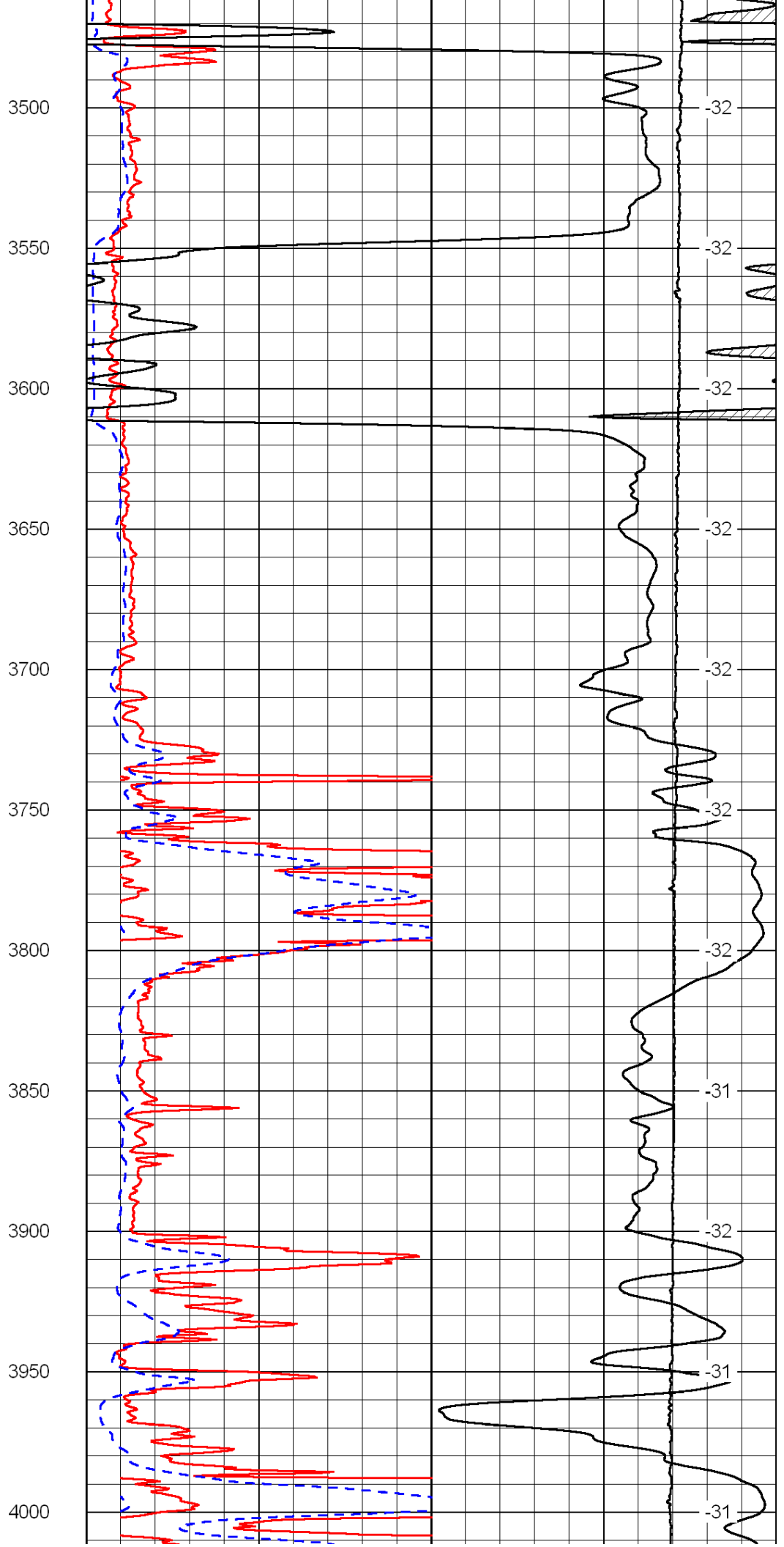
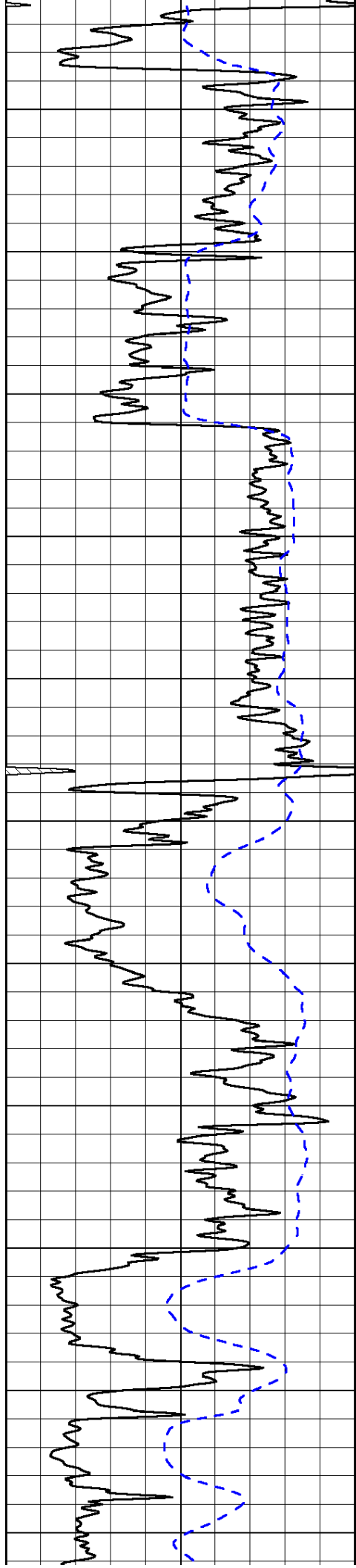


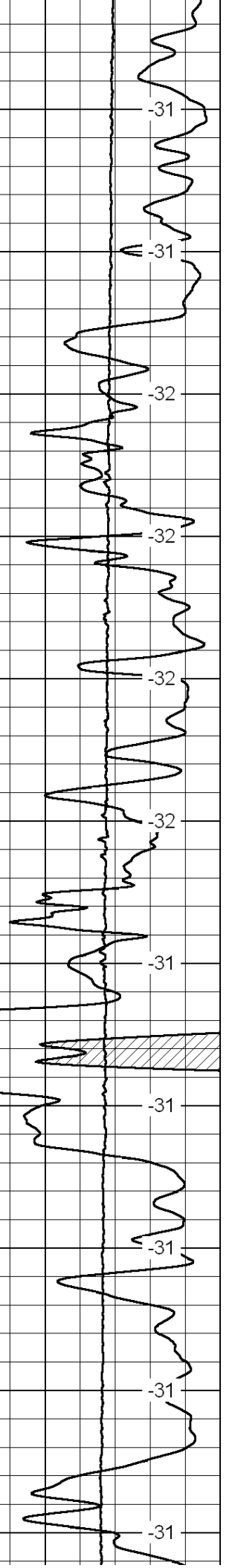
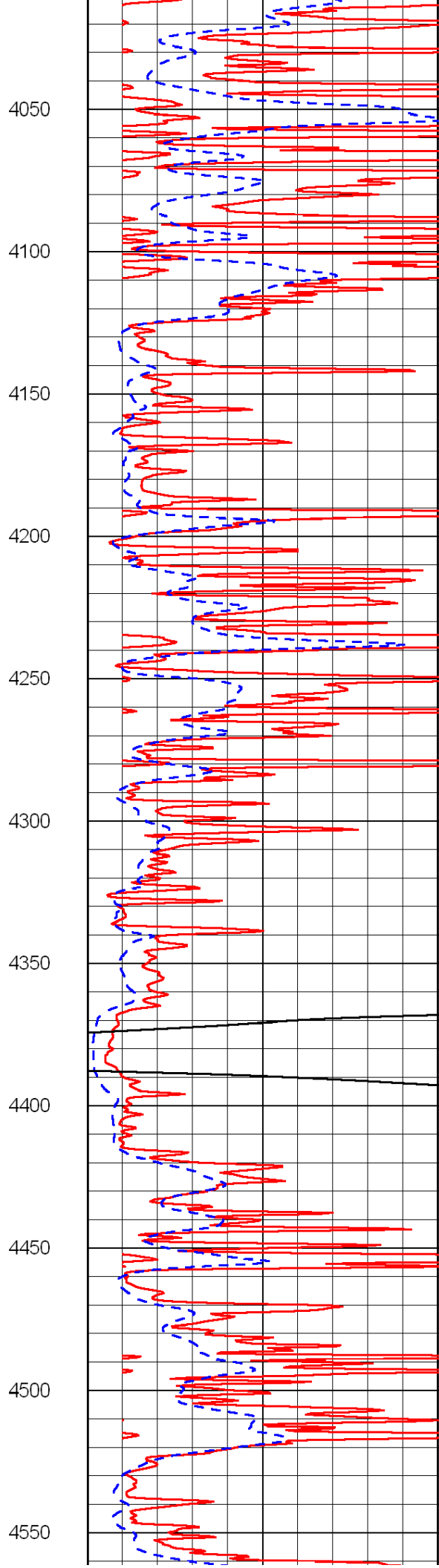
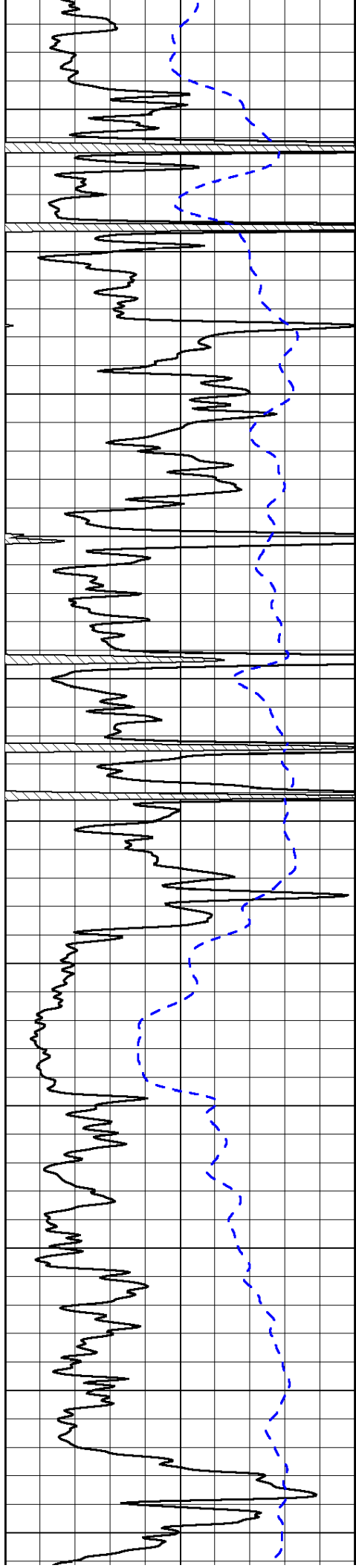


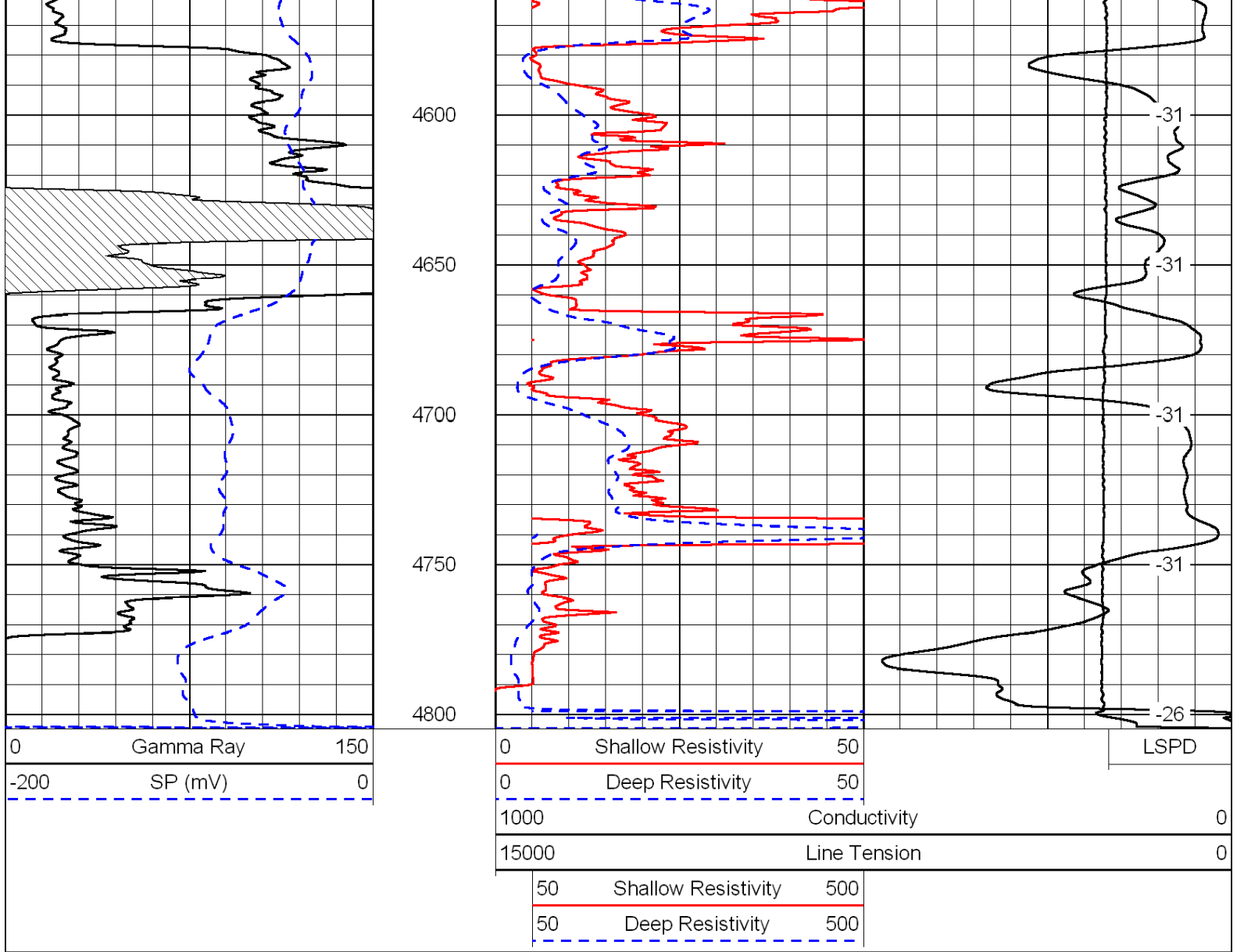




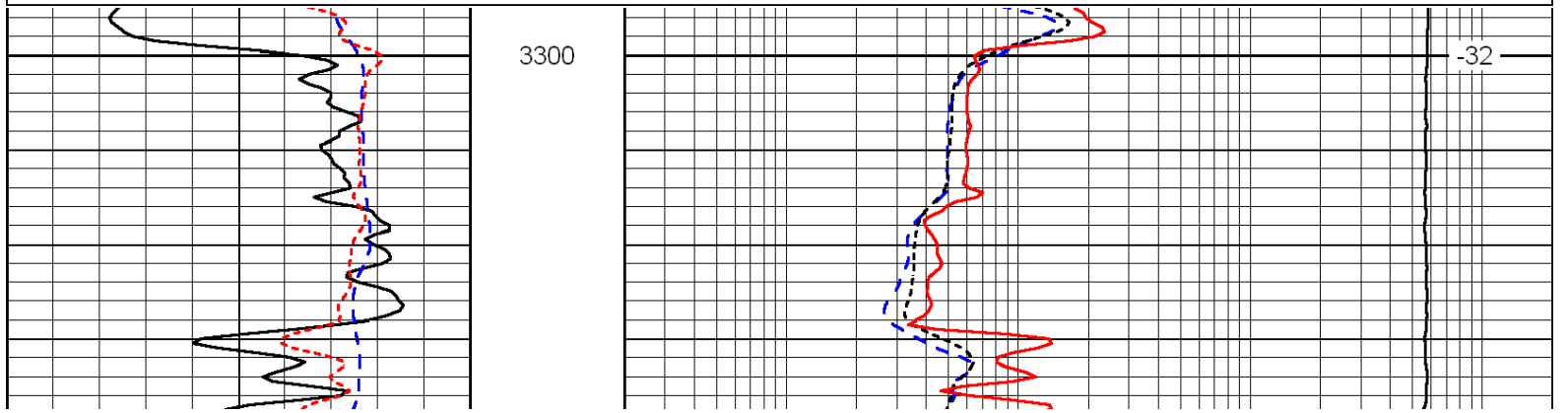
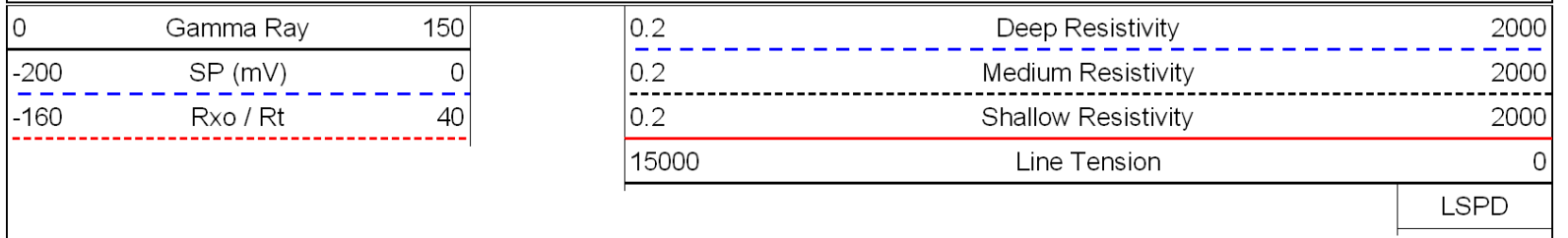


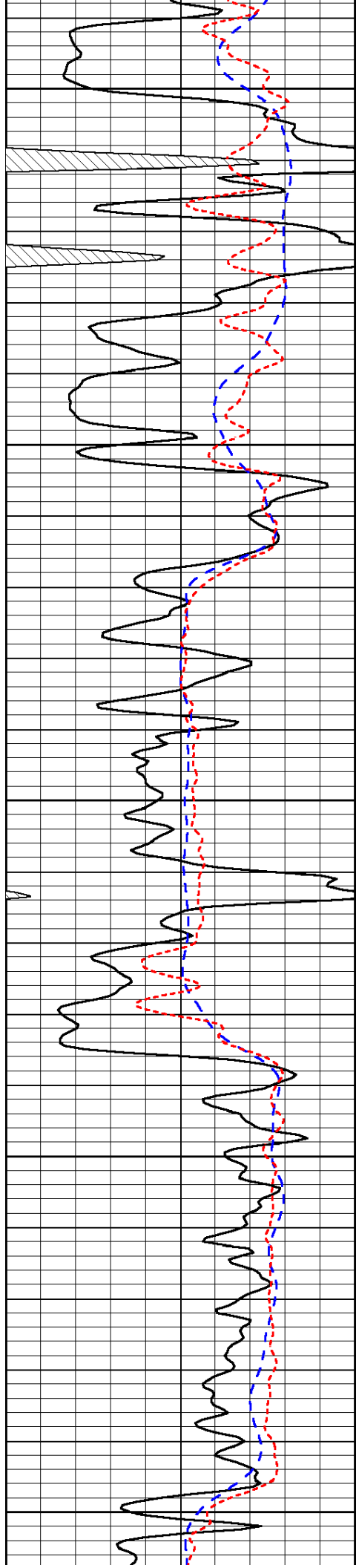






Database File: c:\warrior\data\griffin_ferguson no. 1\griffin_ferguson-1hd.db
 Dataset Pathname: dil/grifstck
 Presentation Format: dil
 Dataset Creation: Thu Nov 11 14:21:40 2010
 Charted by: Depth in Feet scaled 1:240





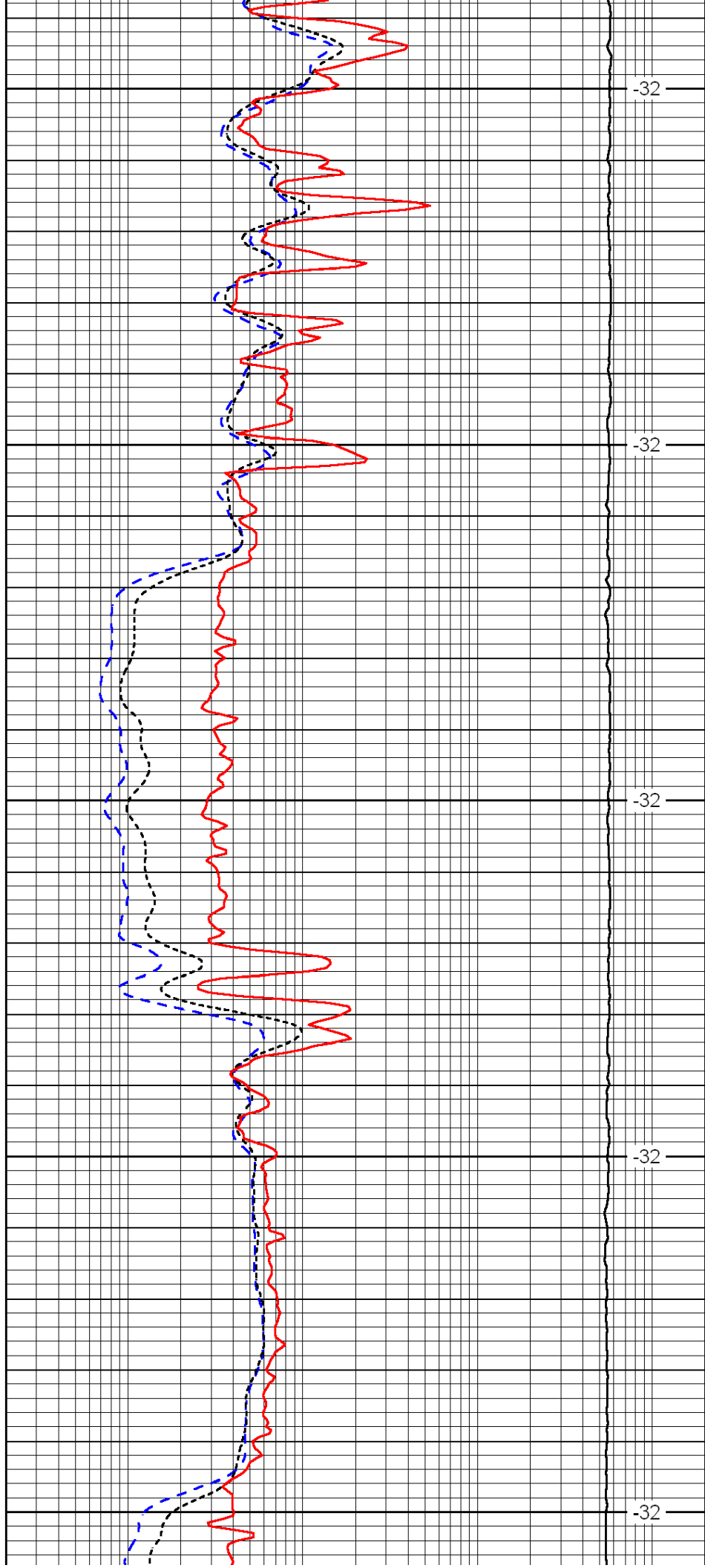
3350

3400

3450

3500

3550



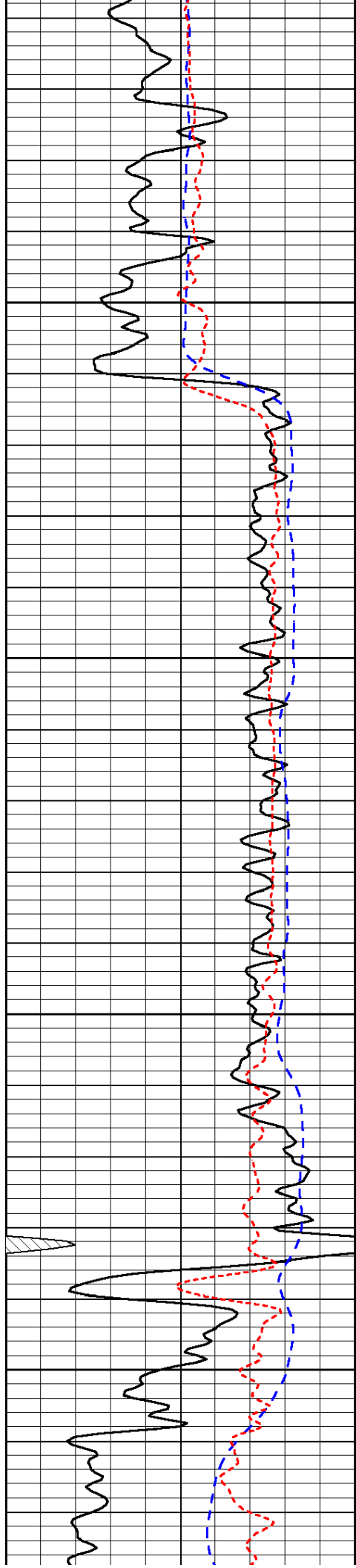
-32

-32

-32

-32

-32

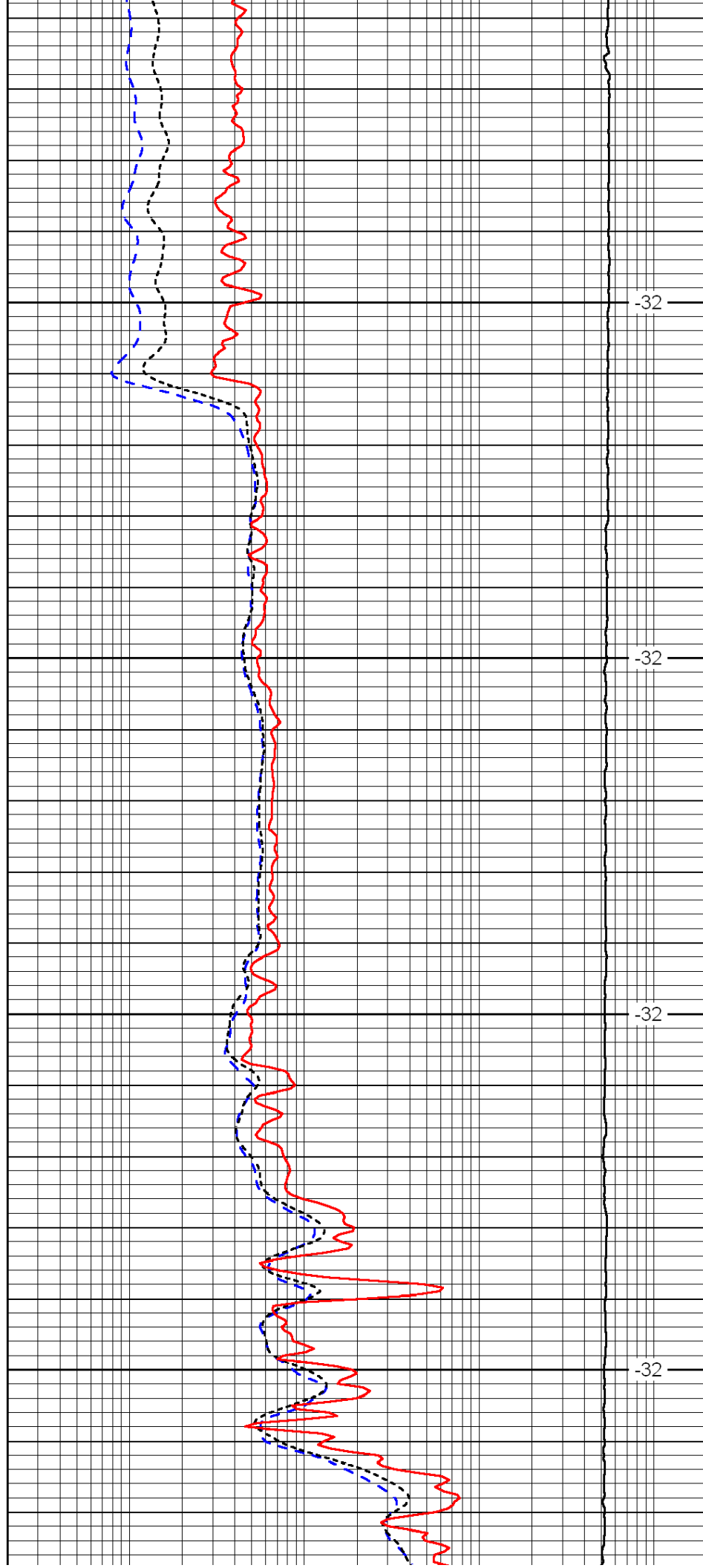


3600

3650

3700

3750

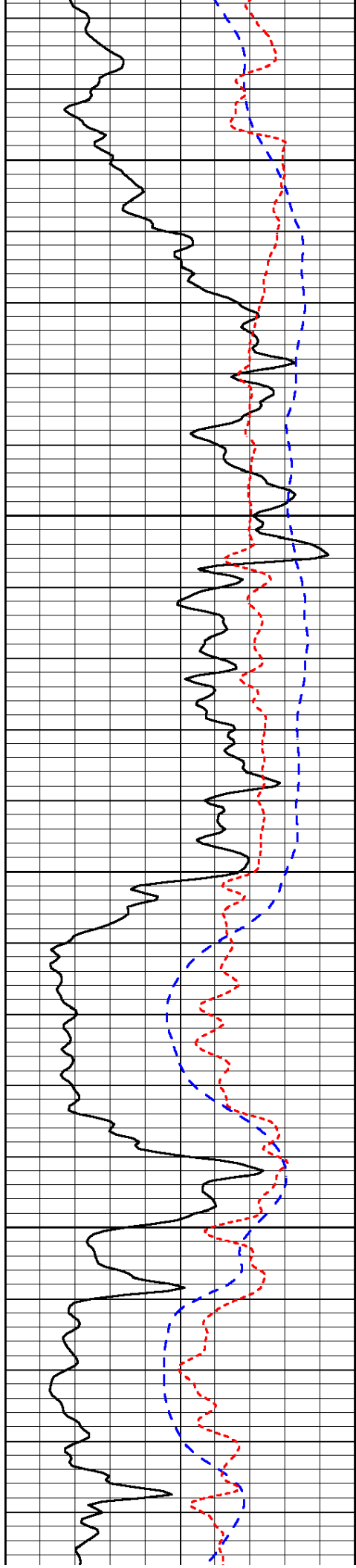


-32

-32

-32

-32

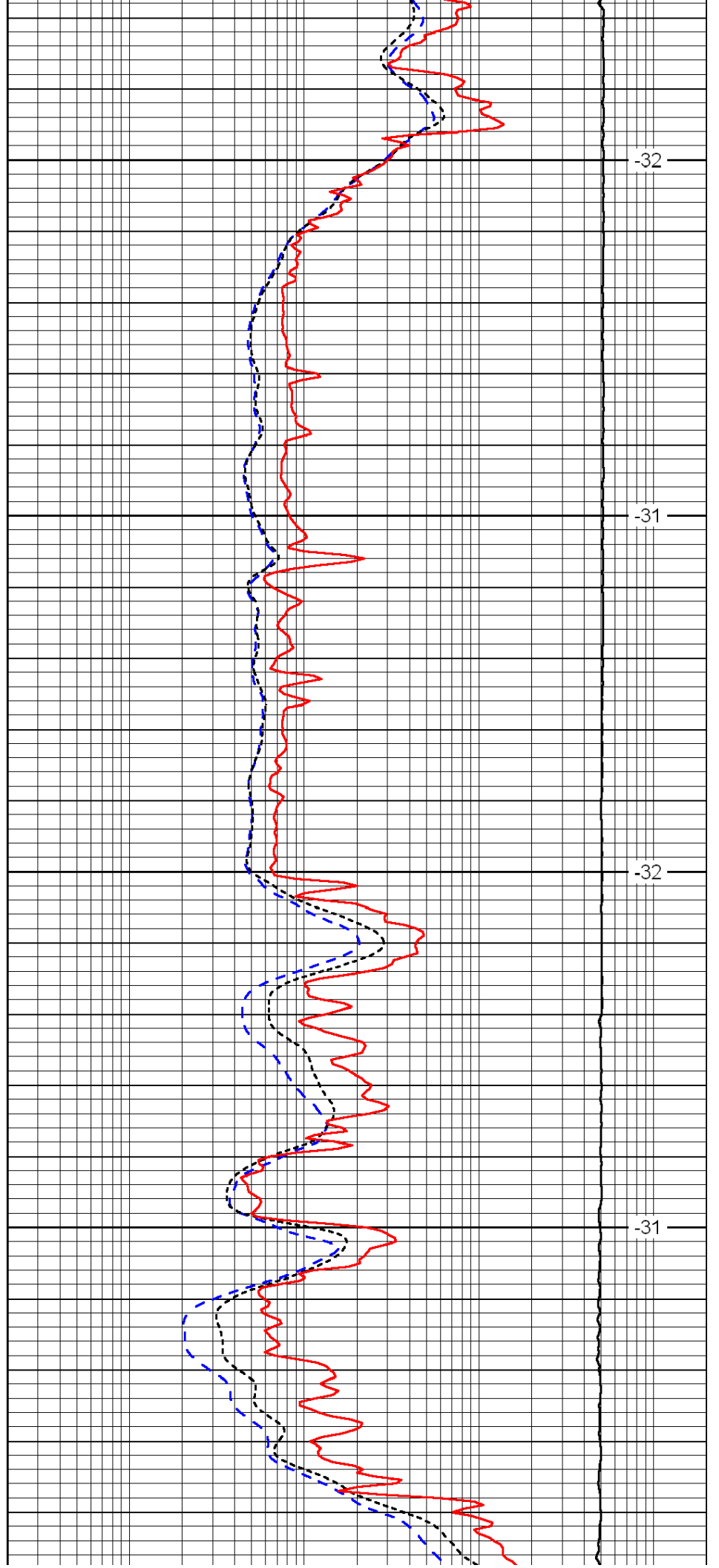


3800

3850

3900

3950

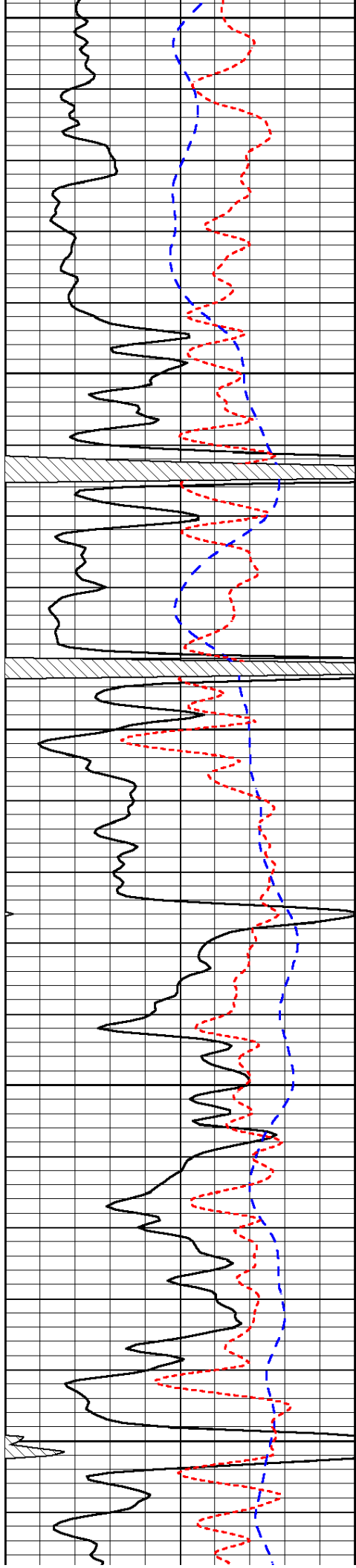


-32

-31

-32

-31



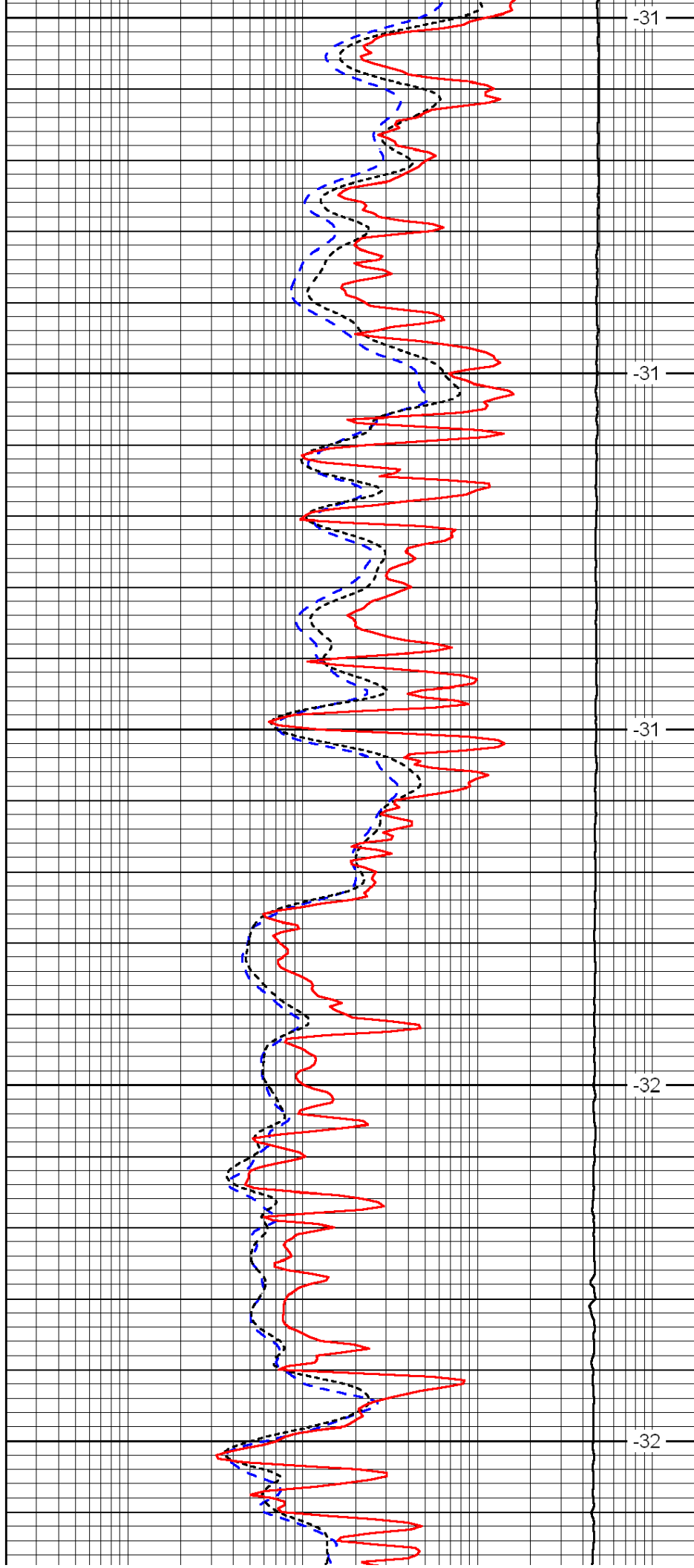
4000

4050

4100

4150

4200



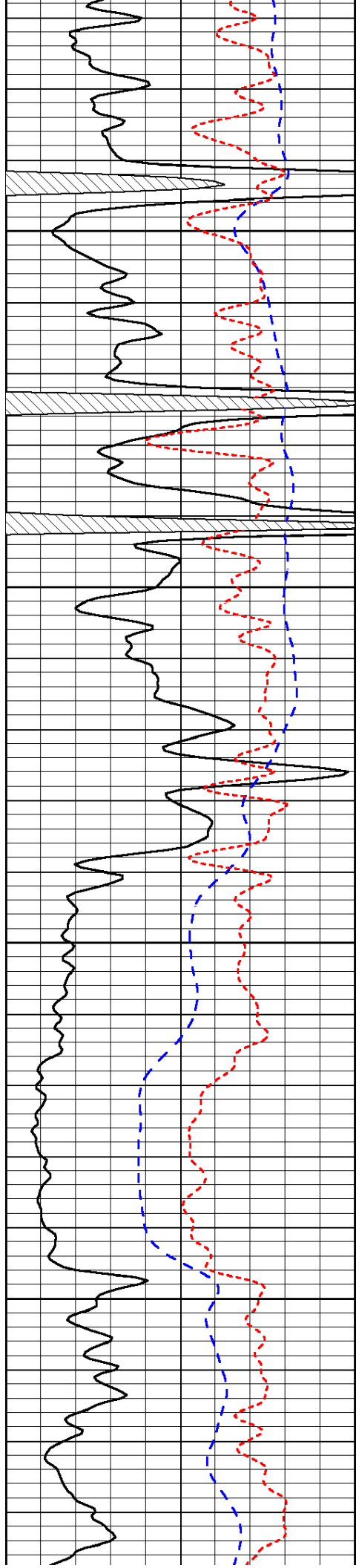
-31

-31

-31

-32

-32

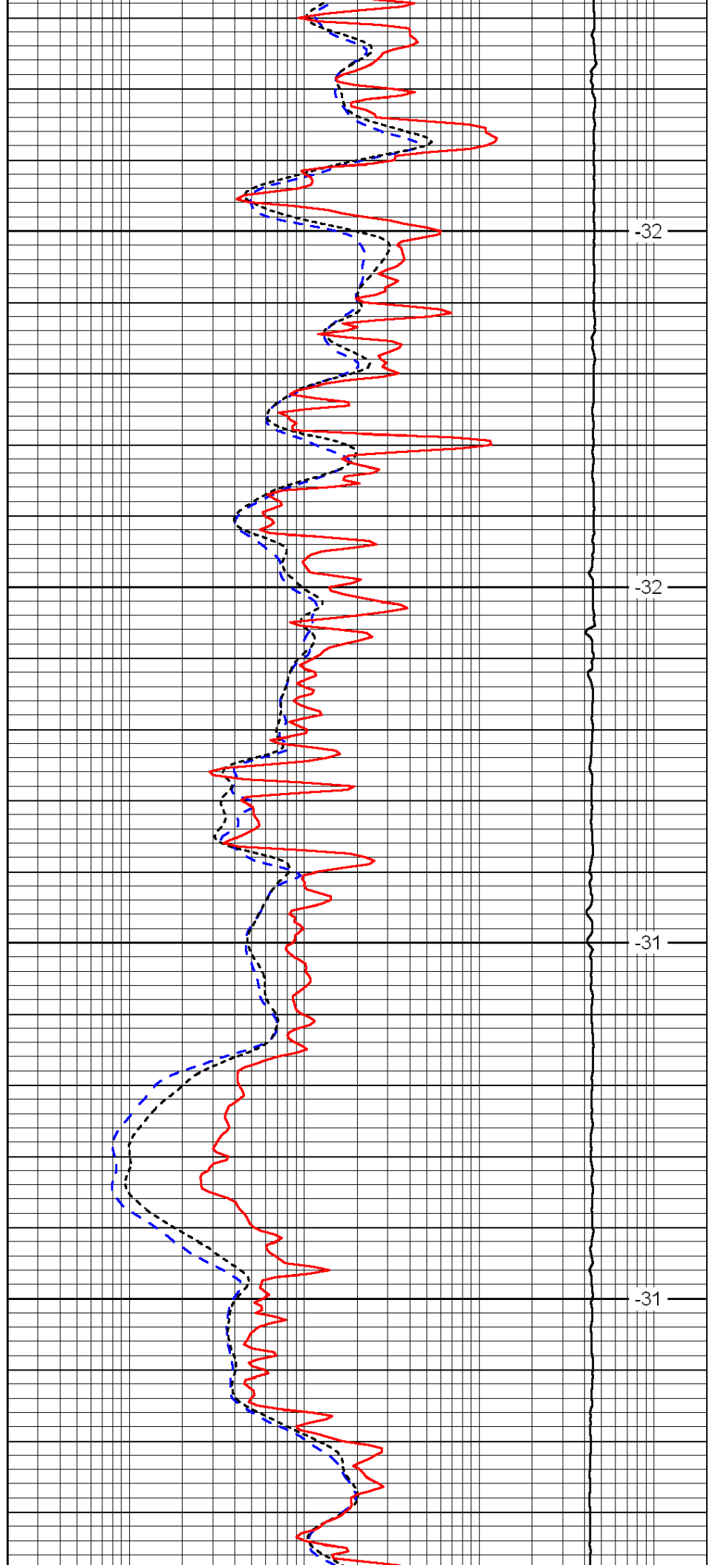


4250

4300

4350

4400

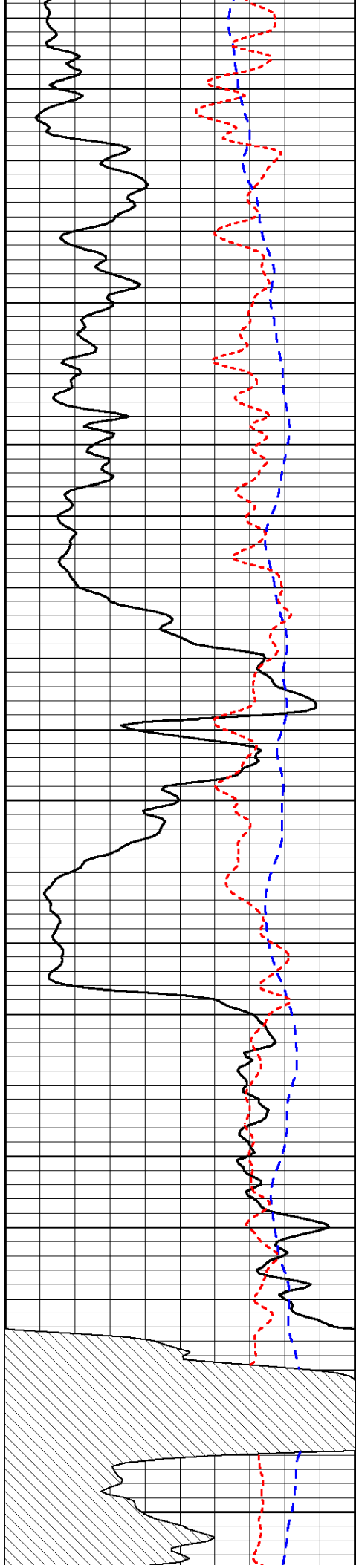


-32

-32

-31

-31



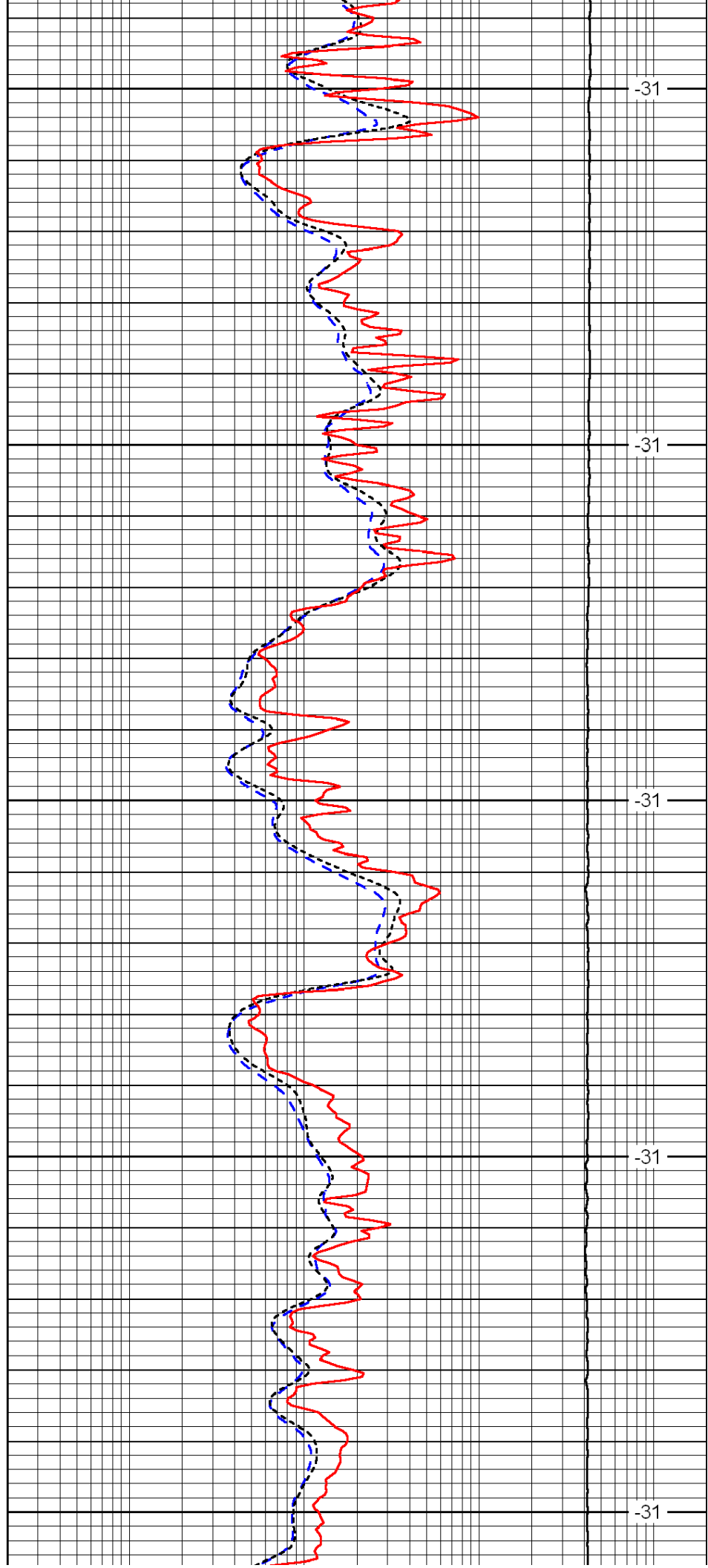
4450

4500

4550

4600

4650



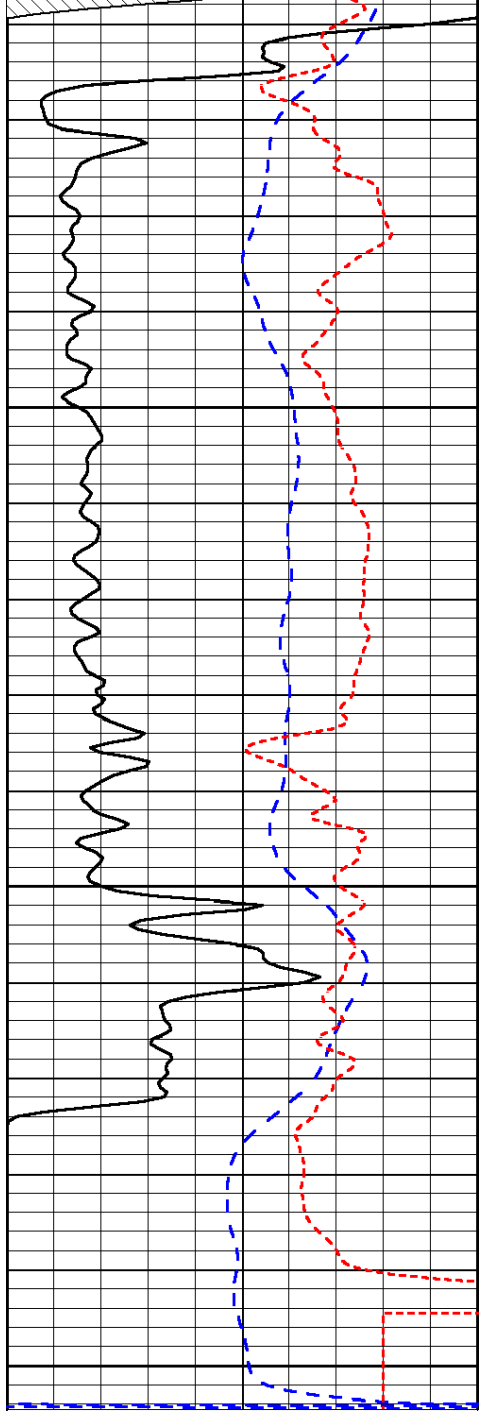
-31

-31

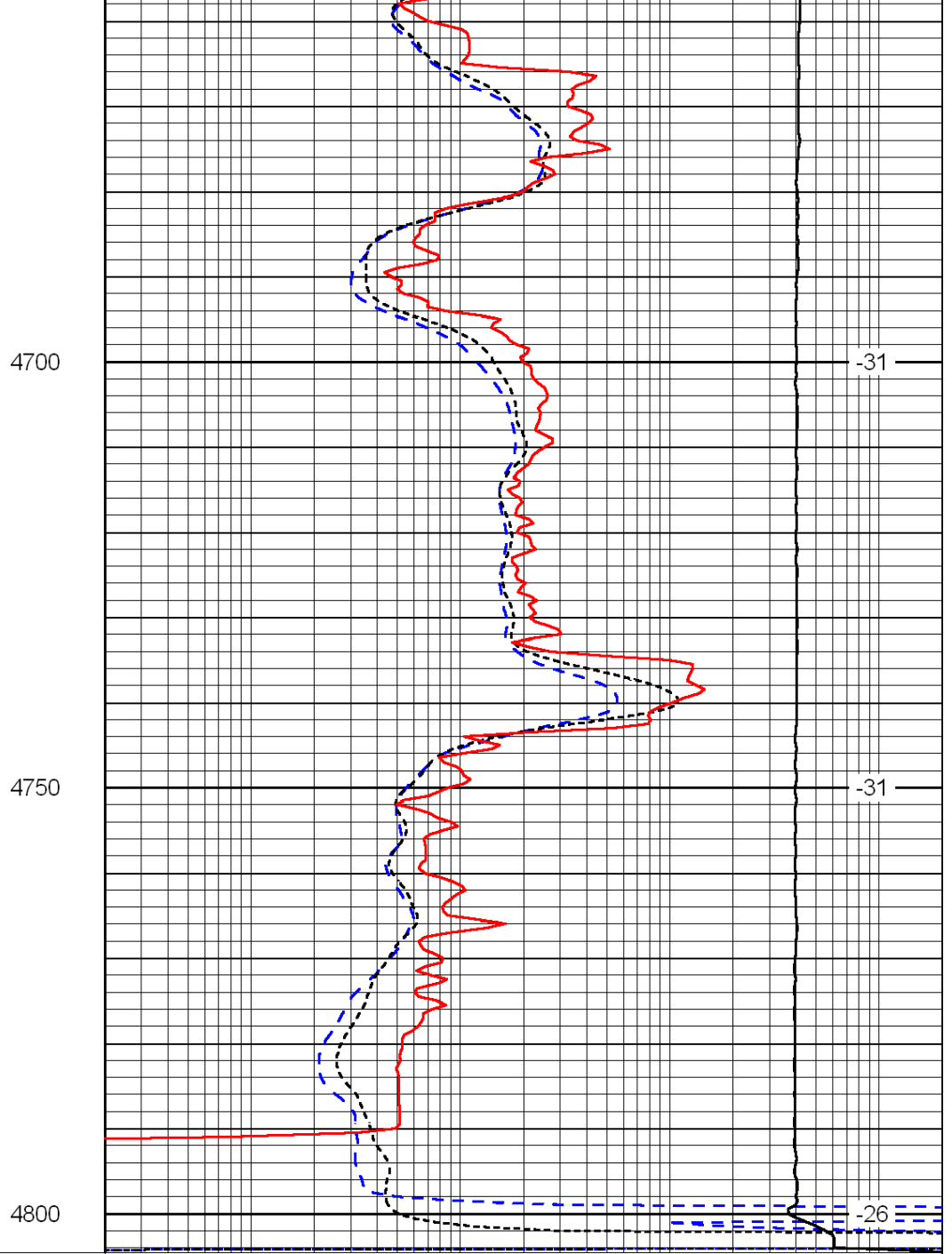
-31

-31

-31



0	Gamma Ray	150
-200	SP (mV)	0
-160	Rxo / Rt	40



0.2	Deep Resistivity	2000
0.2	Medium Resistivity	2000
0.2	Shallow Resistivity	2000
15000	Line Tension	0

LSPD