



Dual Compensated Porosity Log

DIGITAL LOG (785) 625-3858

API No. 15-077-21,717-00-00

Company **Charles N Griffin**
 Well **Ferguson No. 1**
 Field **Little Sandy Creek East**
 County **Harper** State **Kansas**

Location **SE SW NW
2310' FNL & 990' FWL**

Sec: **29** Twp: **32S** Rge: **9W**

Other Services
DIL

Permanent Datum **Ground Level** Elevation **1399**
 Log Measured From **Kelly Bushing** 9 Ft. Above Perm. Datum
 Drilling Measured From **Kelly Bushing**

Date **11/11/2010**

Run Number **One**

Type Log **CNL / CDL**

Depth Driller **4800**

Depth Logger **4799**

Bottom Logged Interval **4778**

Top Logged Interval **3300**

Type Fluid In Hole **Chemical**

Salinity, PPM CL **12,000**

Density **9.2**

Level **Full**

Max. Rec. Temp. F **126**

Operating Rig Time **3 Hours**

Equipment -- Location **15 Hays**

Recorded By **Mike Garrison**

Witnessed By **Bruce A Reed**

Borehole Record				Casing Record			
Run No.	Bit	From	To	Size	Wgt.	From	To
1	12.25	00	269	8.625	24#	00	269
2	7.875	269	4800				

<<< Fold Here >>>

All interpretations are opinions based on inferences from electrical or other measurements and we cannot and do not guarantee the accuracy or correctness of any interpretation, and we shall not, except in the case of gross or willful negligence on our part, be liable or responsible for any loss, costs, damages, or expenses incurred or sustained by anyone resulting from any interpretation made by any of our officers, agents or employees. These interpretations are also subject to our general terms and conditions set out in our current Price Schedule.

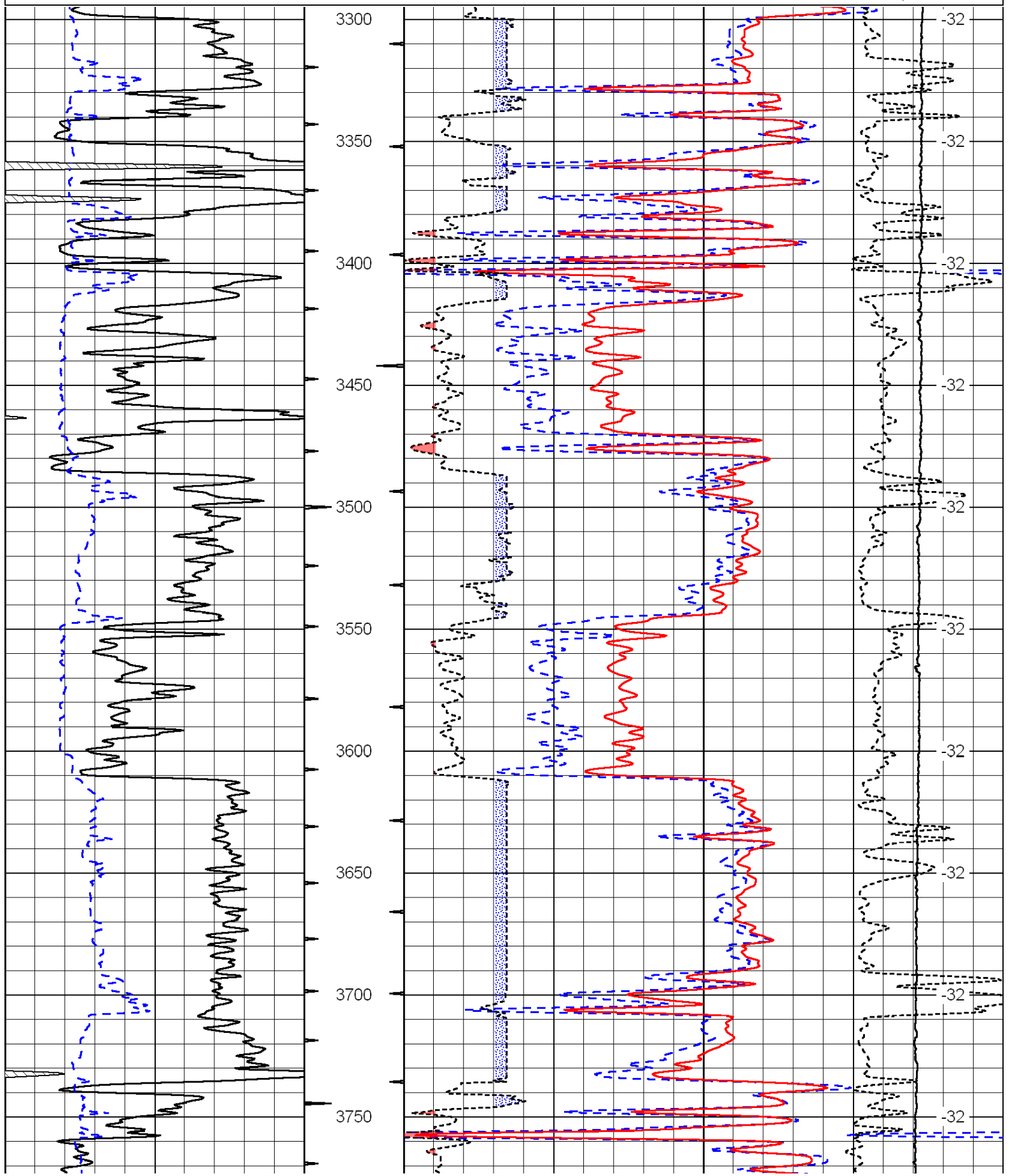
Comments

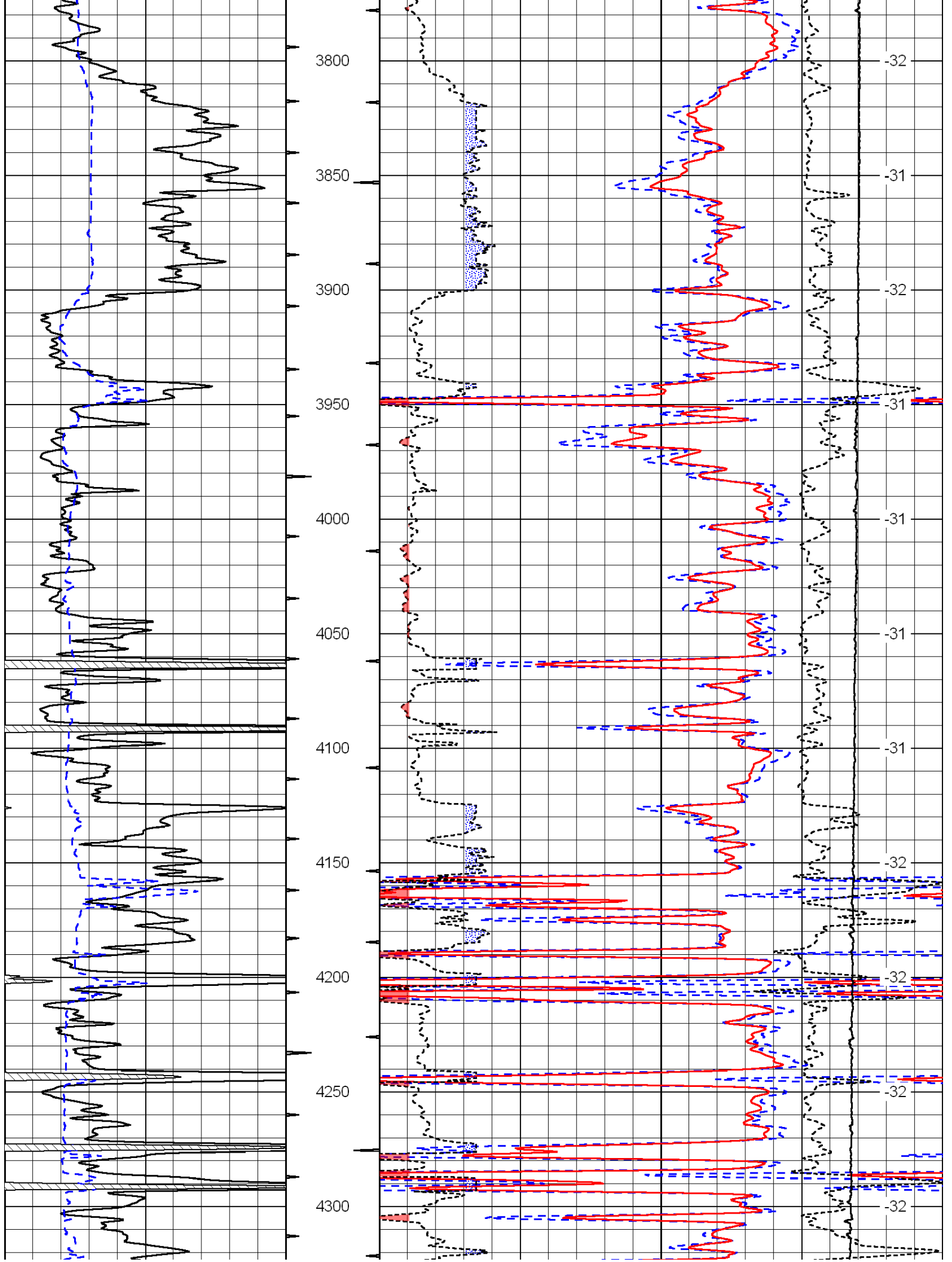
Thank you for using Log-Tech, Inc.
 (785) 625-3858

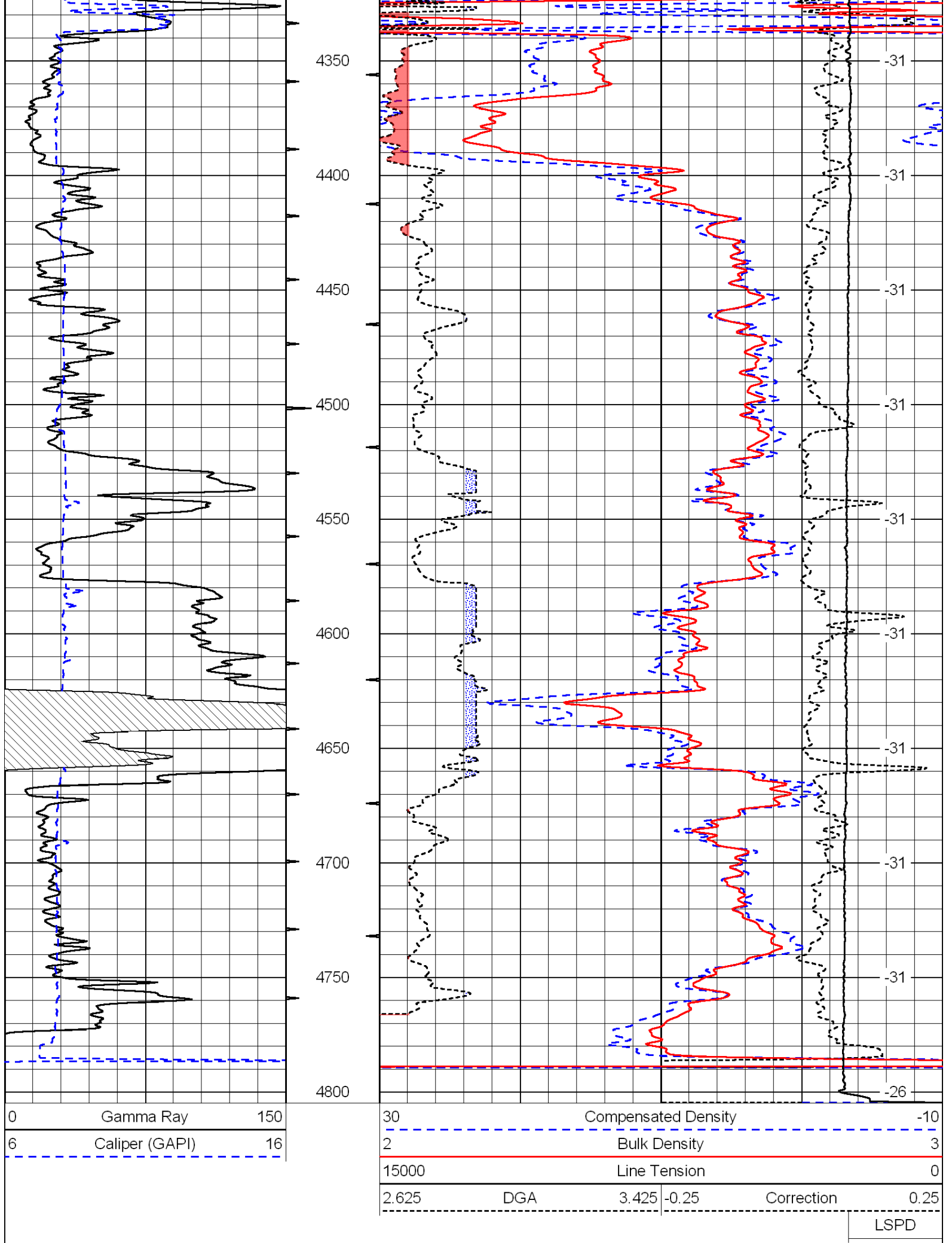
Sharon, East to Countyline, 1 South, 1 1/10 East South Into

0	Gamma Ray	150
6	Caliper (GAPI)	16

30	Compensated Density		-10
2	Bulk Density		3
15000	Line Tension		0
2.625	DGA	3.425	-0.25
Correction			0.25
LSPD			





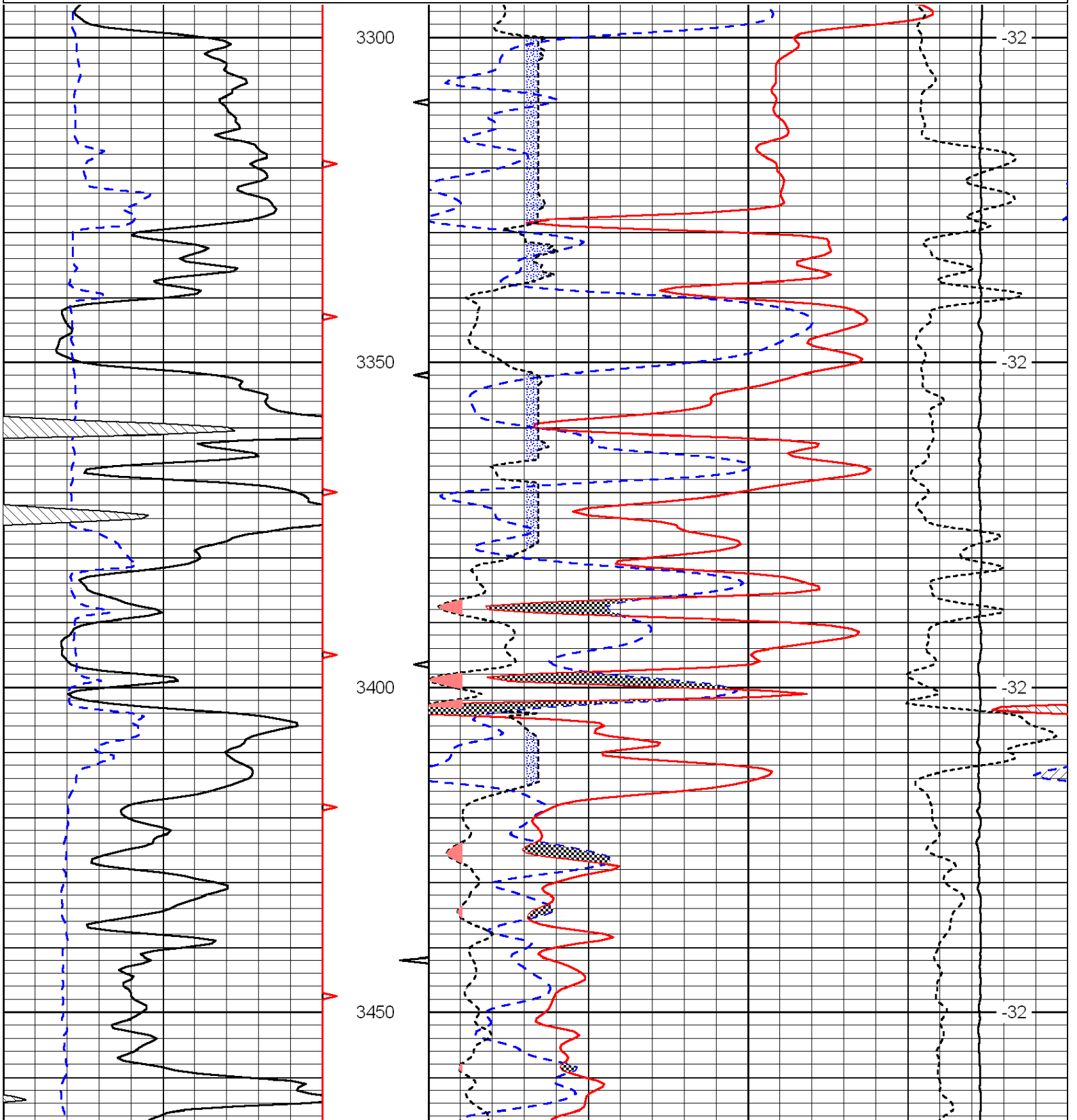


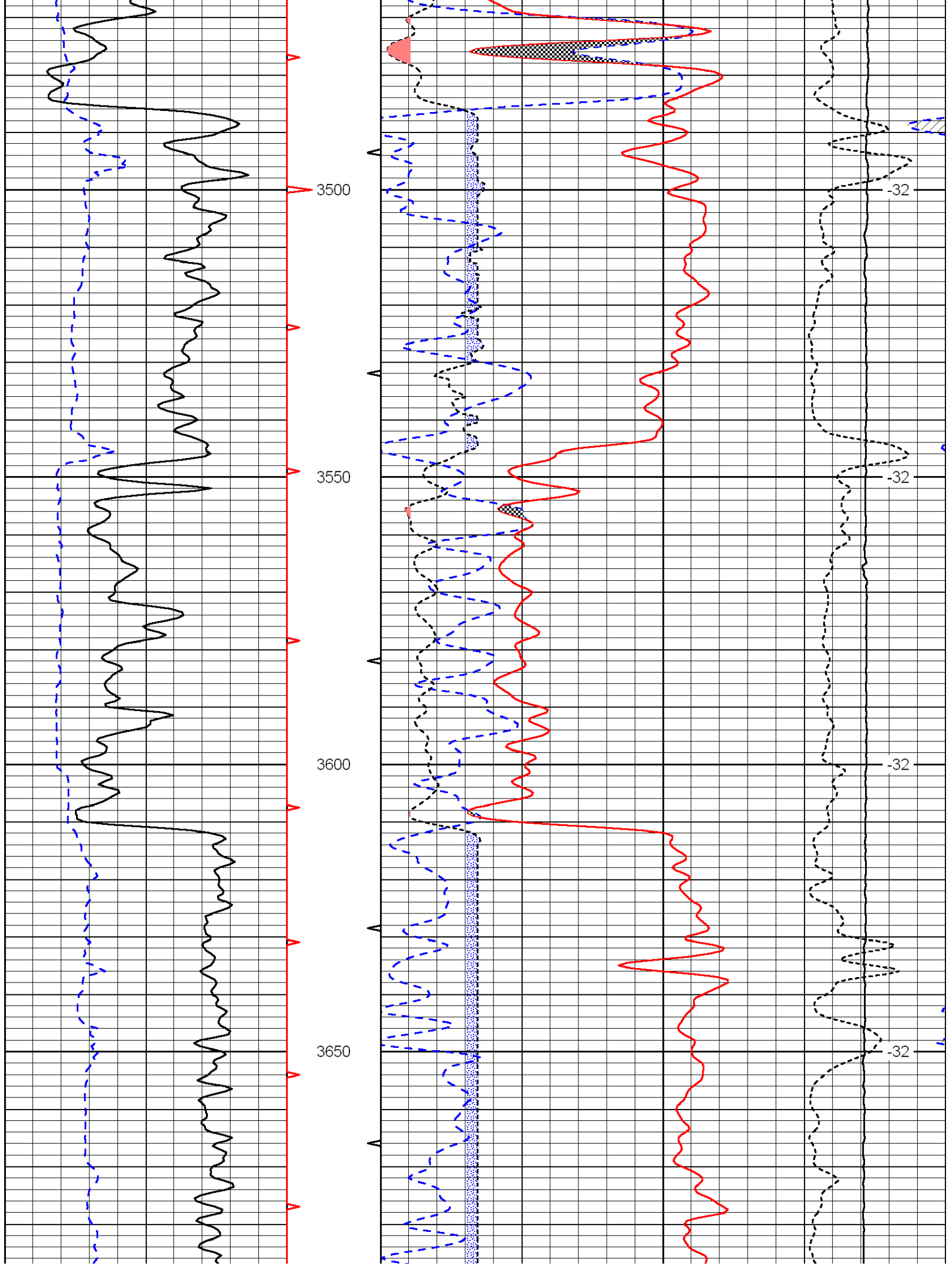
Database File: c:\warrior\data\griffin_ferguson no. 1\griffin_ferguson-1hd.db
 Dataset Pathname: dil/grifstck
 Presentation Format: cndlspec
 Dataset Creation: Thu Nov 11 14:21:40 2010
 Charted by: Depth in Feet scaled 1:240

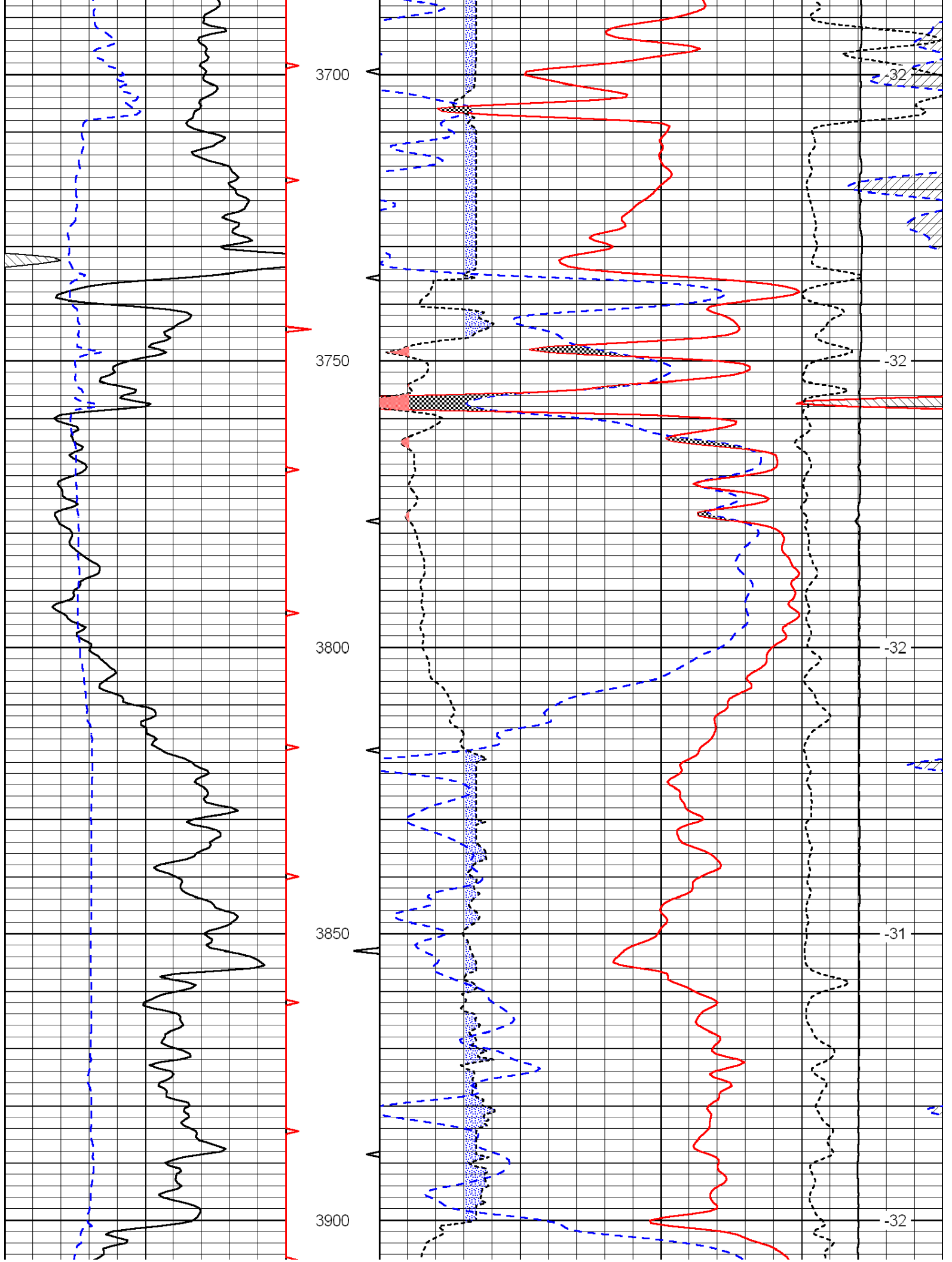
0	Gamma Ray	150
6	Caliper (GAPI)	16

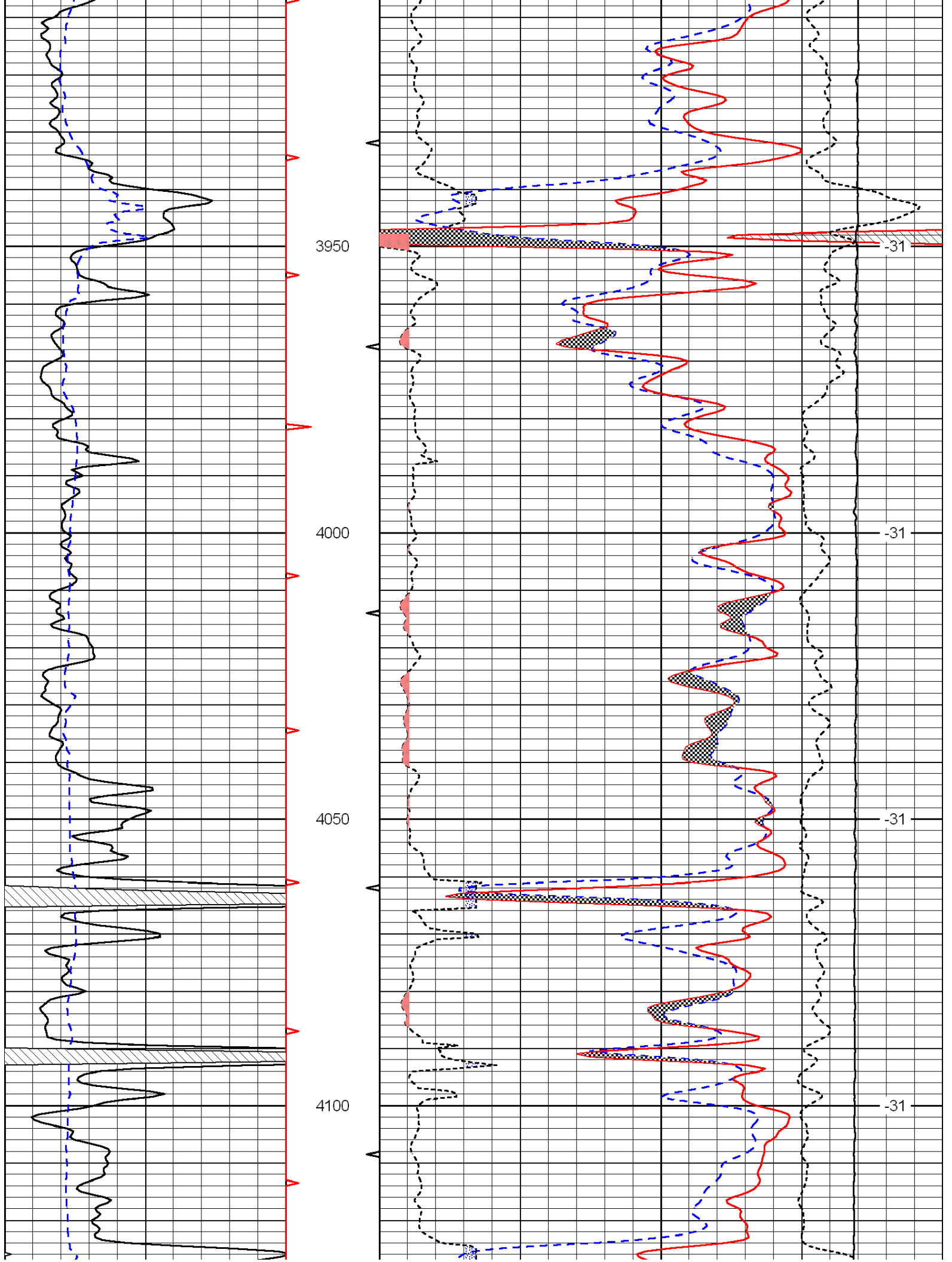
30	Compensated Neutron (Limestone)			-10	
30	Compensated Density (2.71 ma)			-10	
2.625	DGA	3.425	-0.25	Correction	0.25
15000	Line Tension			0	

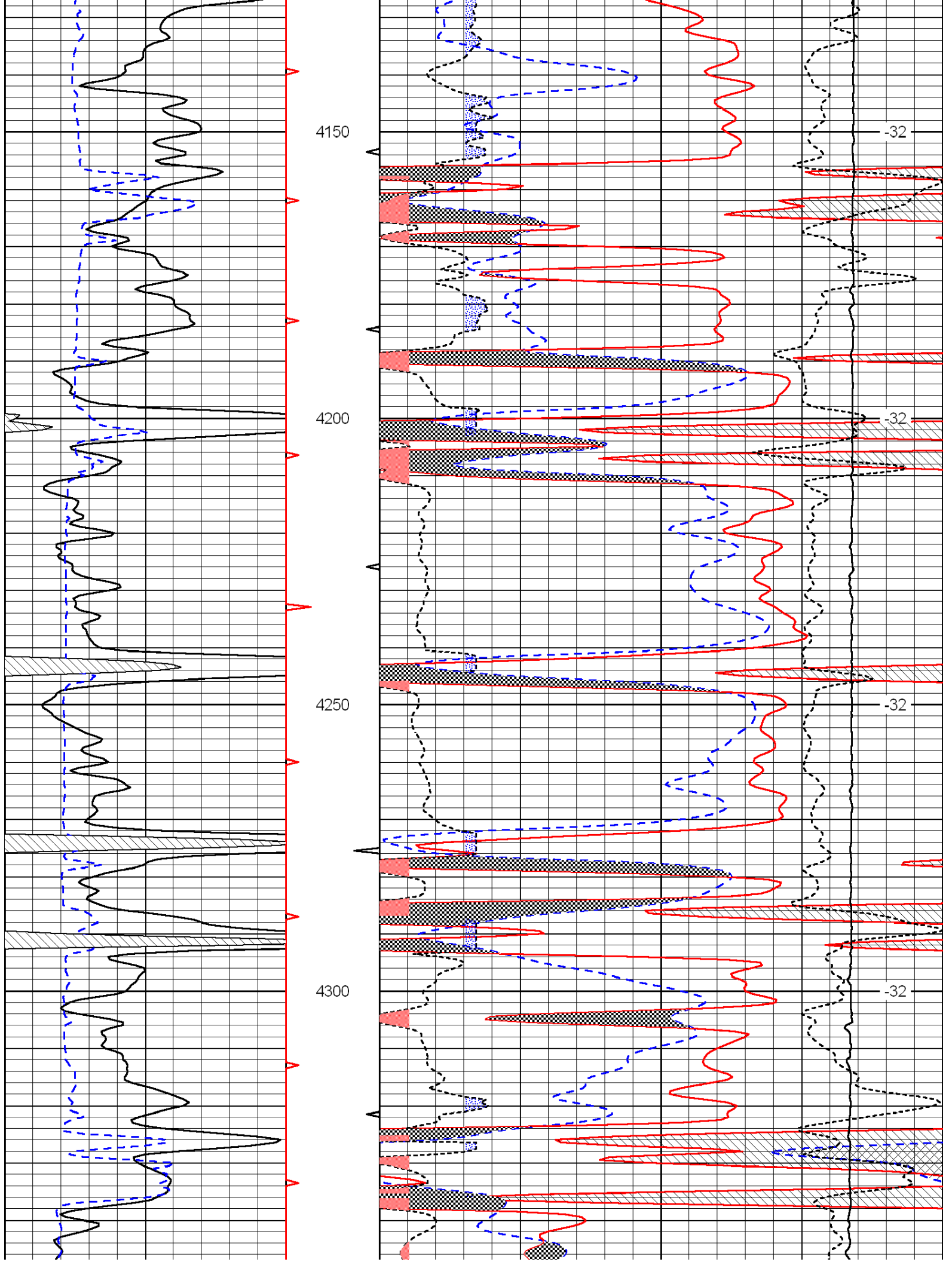
LSPD

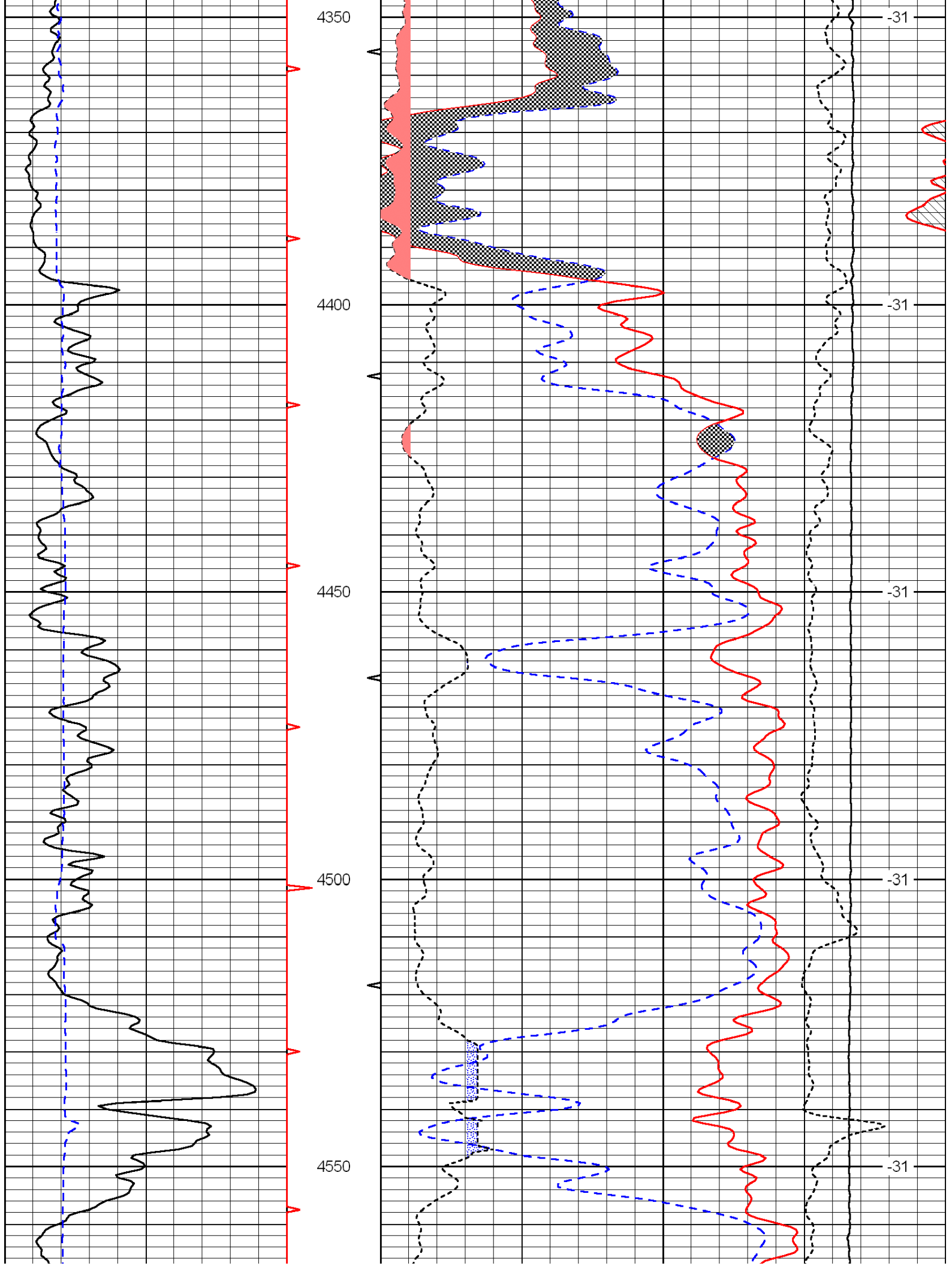


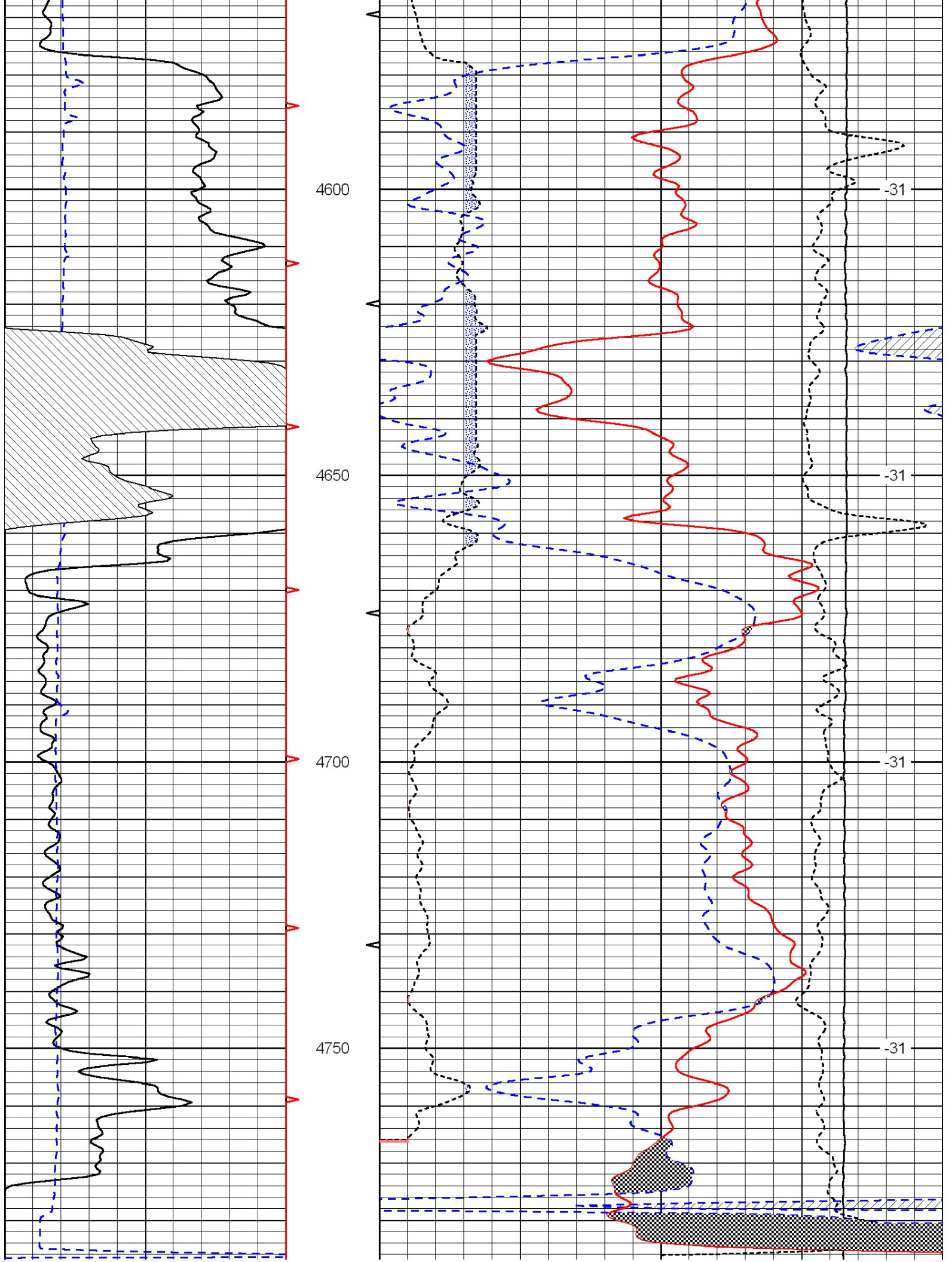


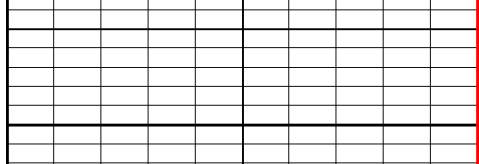




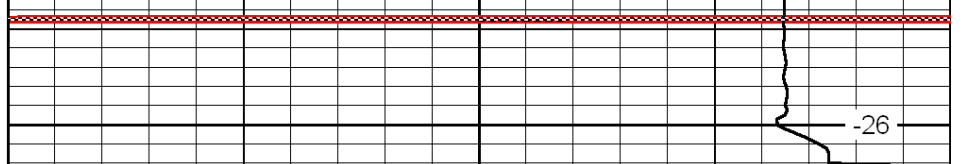








4800



0	Gamma Ray	150
6	Caliper (GAPI)	16

30	Compensated Neutron (Limestone)		-10
30	Compensated Density (2.71 ma)		-10

2.625	DGA	3.425	-0.25	Correction	0.25
15000	Line Tension				0

LSPD