



**GAMMA RAY  
NEUTRON  
COMPLETION LOG**

Company INTREPID RESOURCES, LLC  
Well PIERCE #PIERCE IR 23  
Field NEODESHA  
County MONTGOMERY  
State KANSAS

Location: ARI #: 15-125-23348-00-00  
1000' FSL & 1828' FEL  
NW NE SW SE  
SEC 3 TWP 31S RGE 16E  
Permanent Datum G.L.  
Log Measured From G.L.  
Drilling Measured From G.L.  
Elevation 793 EST  
K.B. ELEVATION  
D.F. 795 EST.

Date 6-20-13  
Run Number 1 NW  
Depth Driller 1062  
Depth Logger 986.3'  
Top Log Interval 0  
Bottom Logged Interval 986.3'  
Fluid Level FULL  
Type Fluid WATER

Production Ceiling 4.5' @ 972'  
Max. Recorded Temp. @  
Estimated Cement Top @  
Calculated Cement Top @  
Amount & Type Cement @  
Drilling Contractor @  
Equipment Number @  
Location @  
Recorded By @  
Witnessed By @

Production Ceiling 4.5' @ 972'  
Max. Recorded Temp. @  
Estimated Cement Top @  
Calculated Cement Top @  
Amount & Type Cement @  
Drilling Contractor @  
Equipment Number @  
Location @  
Recorded By @  
Witnessed By @

<<< Fold Here >>>

All interpretations are opinions based on inferences from electrical or other measurements and we cannot and do not guarantee the accuracy or correctness of any interpretation, and we shall not, except in the case of gross or willful negligence on our part, be liable or responsible for any loss, costs, damages, or expenses incurred or sustained by anyone resulting from any interpretation made by any of our officers, agents or employees. These interpretations are also subject to our general terms and conditions set out in our current Price Schedule.

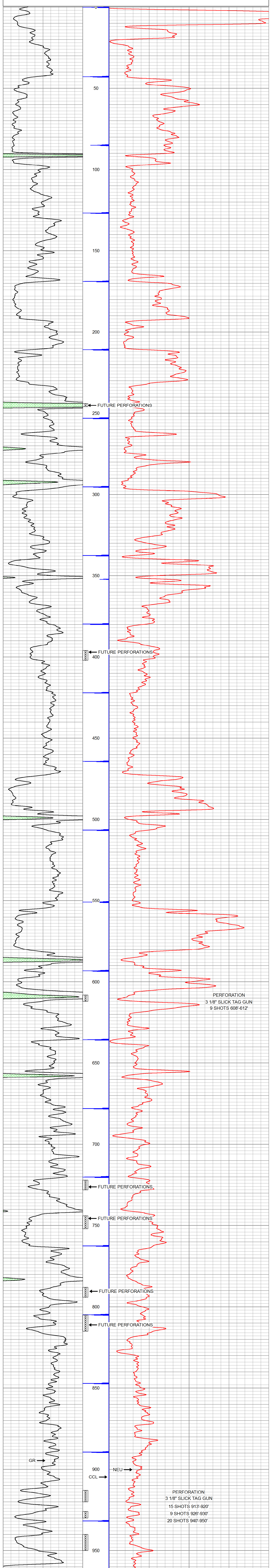
Comments

THANK YOU

Sensor	Offset (ft)	Schematic	Description	Len (ft)	OD (in)	Wt (lb)
GR	7.59		GR-TITAN_169 (TIT169_001) Titan 1 11/16" Gamma Ray	4.75	1.69	20.00
CCL	5.05		CCL-TITAN_169 (TIT169) Titan 1 11/16" Logging CCL	1.83	1.69	7.50
NEU	0.63		NEU-TITAN (TIT801) TITAN 1 11/16" Neutron	4.33	1.69	25.00

Dataset: pierce #pierce ir 23.db: field/well/run1/pass1  
Total Length: 10.92 ft  
Total Weight: 52.50 lb  
O.D.: 1.69 in

Database File: e:\pierce #pierce ir 23.db  
Dataset Pathname: pass1  
Presentation Format: gr-n-ccl  
Dataset Creation: Thu Jun 20 09:33:22 2013 by Log Std Casdhole 09061  
Charted by: Depth in Feet scaled 1:240



Dataset: pierce #pierce ir 23.db: field/well/run1/pass1  
Total Length: 10.92 ft  
Total Weight: 52.50 lb  
O.D.: 1.69 in