



SUPERIOR
Hays,
Kansas

MICRO
LOG

Company HESS OIL COMPANY
Well WOOD #1-7
Field FREY
County STAFFORD
State KANSAS

Company HESS OIL COMPANY
Well WOOD #1-7
Field FREY
County STAFFORD State KANSAS

Location: API # : 15-185-23674-0000
330' FNL & 2310' FEL
SEC 7 TWP 21S RGE 14W
Permanent Datum GROUND LEVEL Elevation 1927
Log Measured From KELLY BUSHING 5' A.G.L.
Drilling Measured From KELLY BUSHING
Other Services
CDL/CNL/PE
DIL/SONIC
Elevation
K.B. 1932
D.F. 1930
G.L. 1927

Date	3/29/11
Run Number	TWO
Depth Driller	3840
Depth Logger	3842
Bottom Logged Interval	3819
Top Log Interval	2300
Casing Driller	8 5/8"@900'
Casing Logger	900
Bit Size	7 7/8"
Type Fluid in Hole	CHEMICAL MUD
Density / Viscosity	9.2/50
pH / Fluid Loss	11.0/9.0
Source of Sample	FLOWLINE
Rim @ Meas. Temp	.850@62F
Rmf @ Meas. Temp	.638@62F
Rmc @ Meas. Temp	1.02@62F
Source of Rmf / Rmc	MEASUREMENT
Rim @ BHT	.458@115F
Time Circulation Stopped	4 HOURS
Time Logger on Bottom	6:15 P.M.
Maximum Recorded Temperature	115F
Equipment Number	0836
Location	HAYS, KANSAS
Recorded By	JEFF LUEBBERS
Witnessed By	DEREK PATTERSON
	JAMIE HESS

<<< Fold Here >>>

All interpretations are opinions based on inferences from electrical or other measurements and we cannot and do not guarantee the accuracy or correctness of any interpretation, and we shall not, except in the case of gross or willful negligence on our part, be liable or responsible for any loss, costs, damages, or expenses incurred or sustained by anyone resulting from any interpretation made by any of our officers, agents or employees. These interpretations are also subject to our general terms and conditions set out in our current Price Schedule.

Comments

THANK YOU FOR USING SUPERIOR WELL SERVICE HAYS, KANSAS (785) 628-6395
DIRECTIONS
PAWNEE ROCK, KS. 2 N.E. ON HWY 156 TO "RADIUM RD." 7S. ON BLKTOP TO "RD. 200", 1/2W., S. INTO

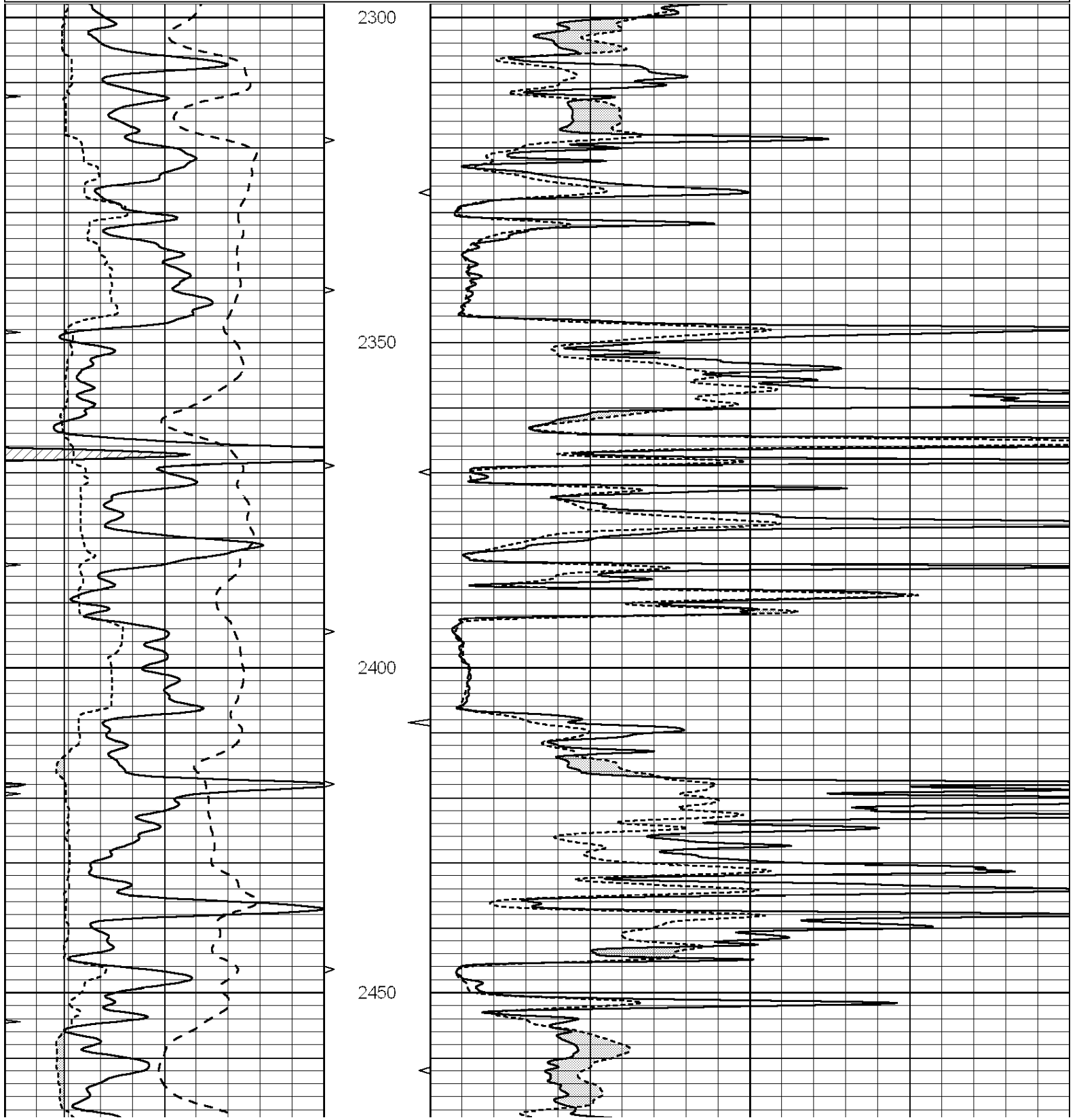


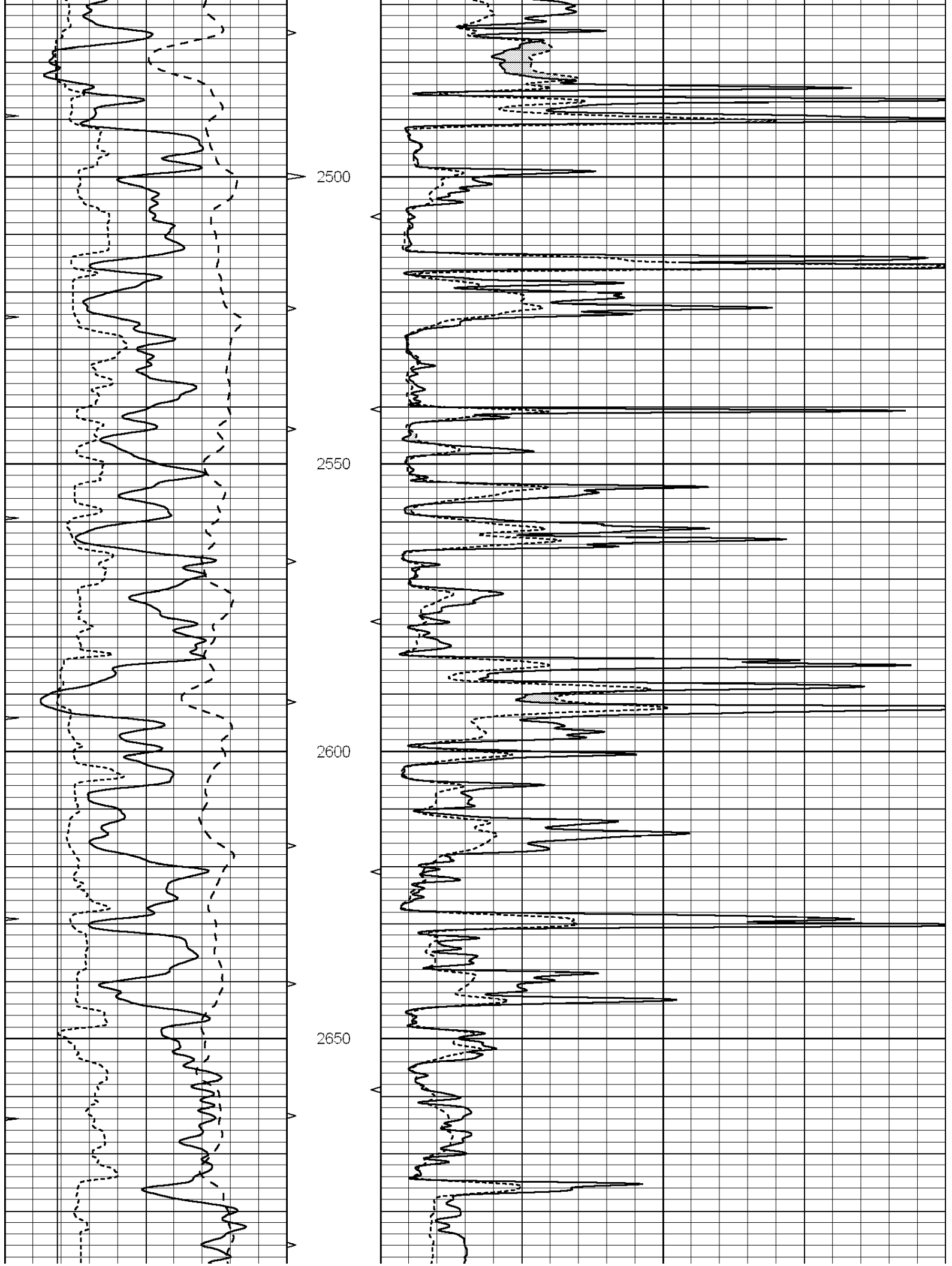
SUPERIOR
Hays,
Kansas

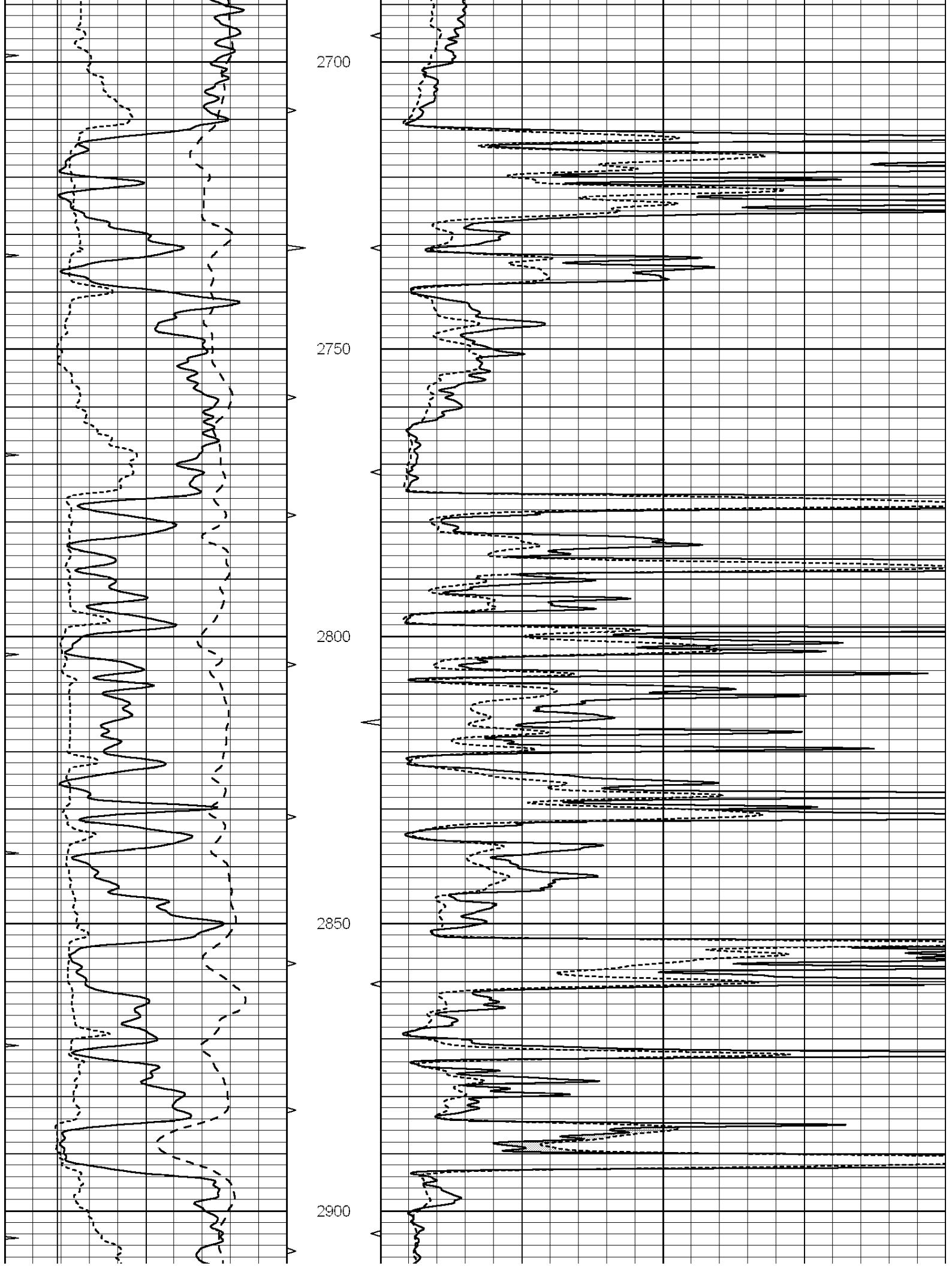
MAIN SECTION

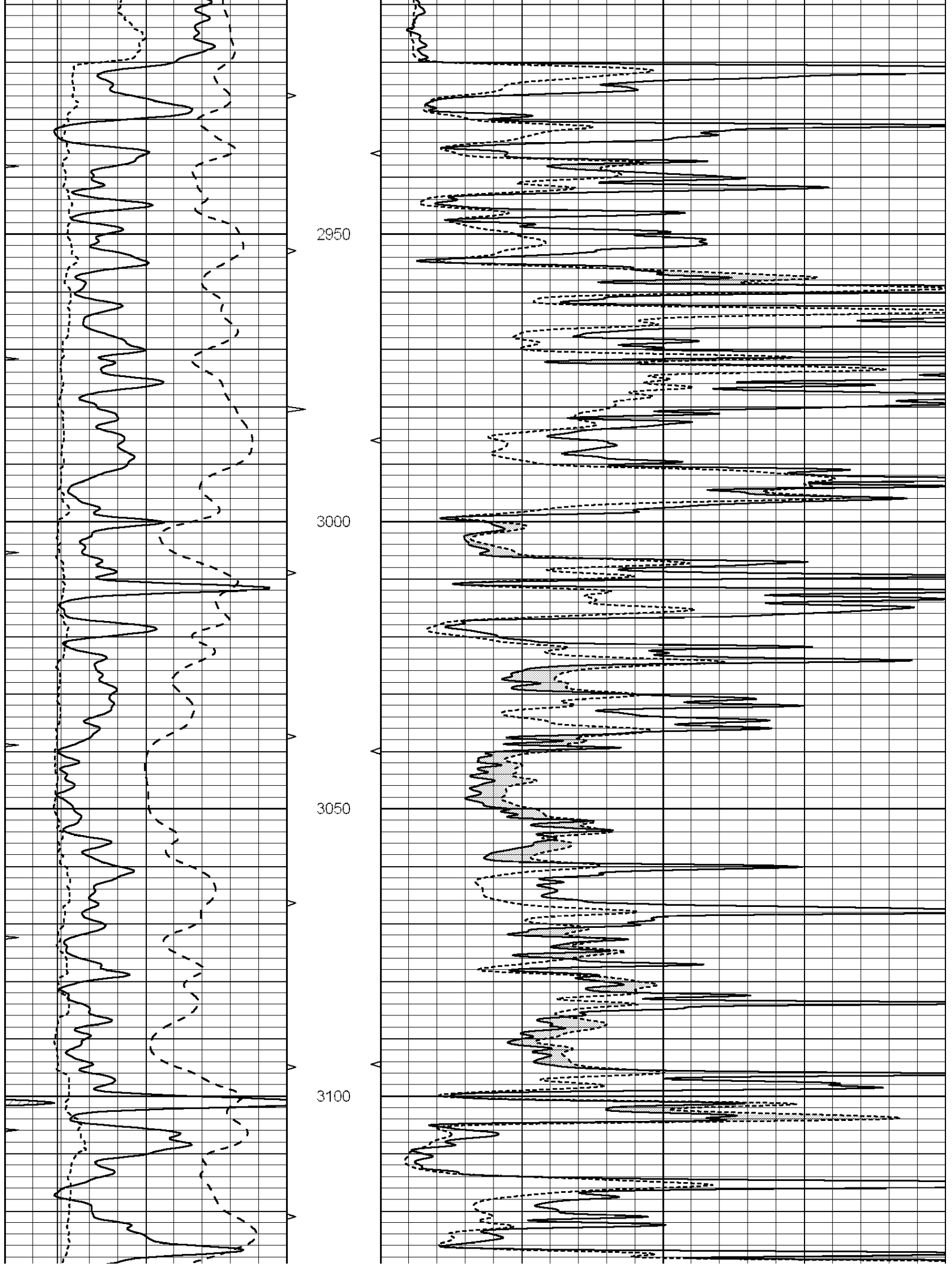
Database File: 006624pe.db
 Dataset Pathname: pass6.5
 Presentation Format: micro
 Dataset Creation: Tue Mar 29 22:12:12 2011
 Charted by: Depth in Feet scaled 1:240

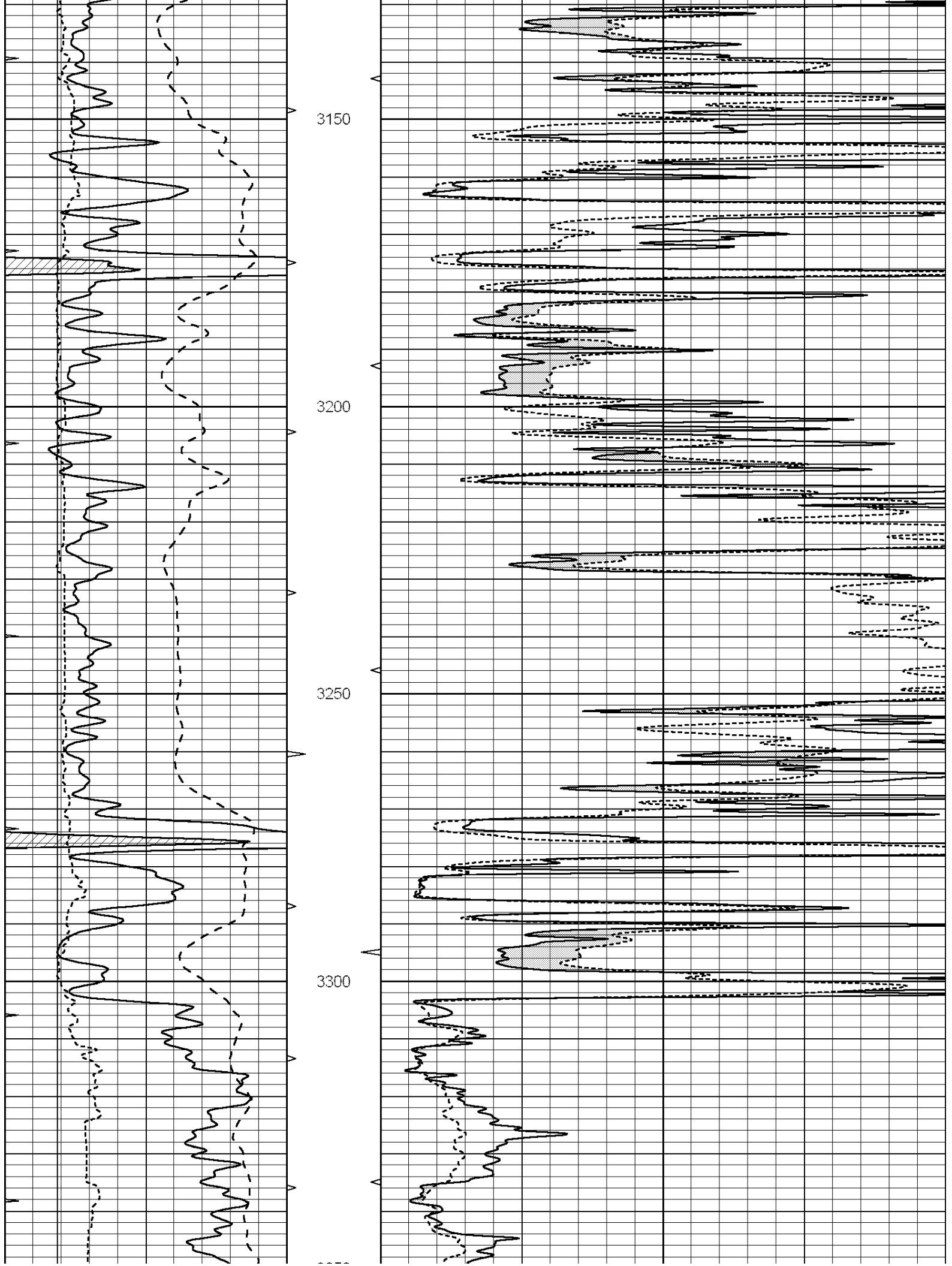
0	GAMMA RAY (GAPI)	150	ABHV	0	MEL1.5 (Ohm-m)	40
-100	SP (mV)	100	10 (ft3)	0	MEL2.0 (Ohm-m)	40
6	CALIPER (in)	16	TBHV			
0	MINMK	20	0 (ft3)	10		

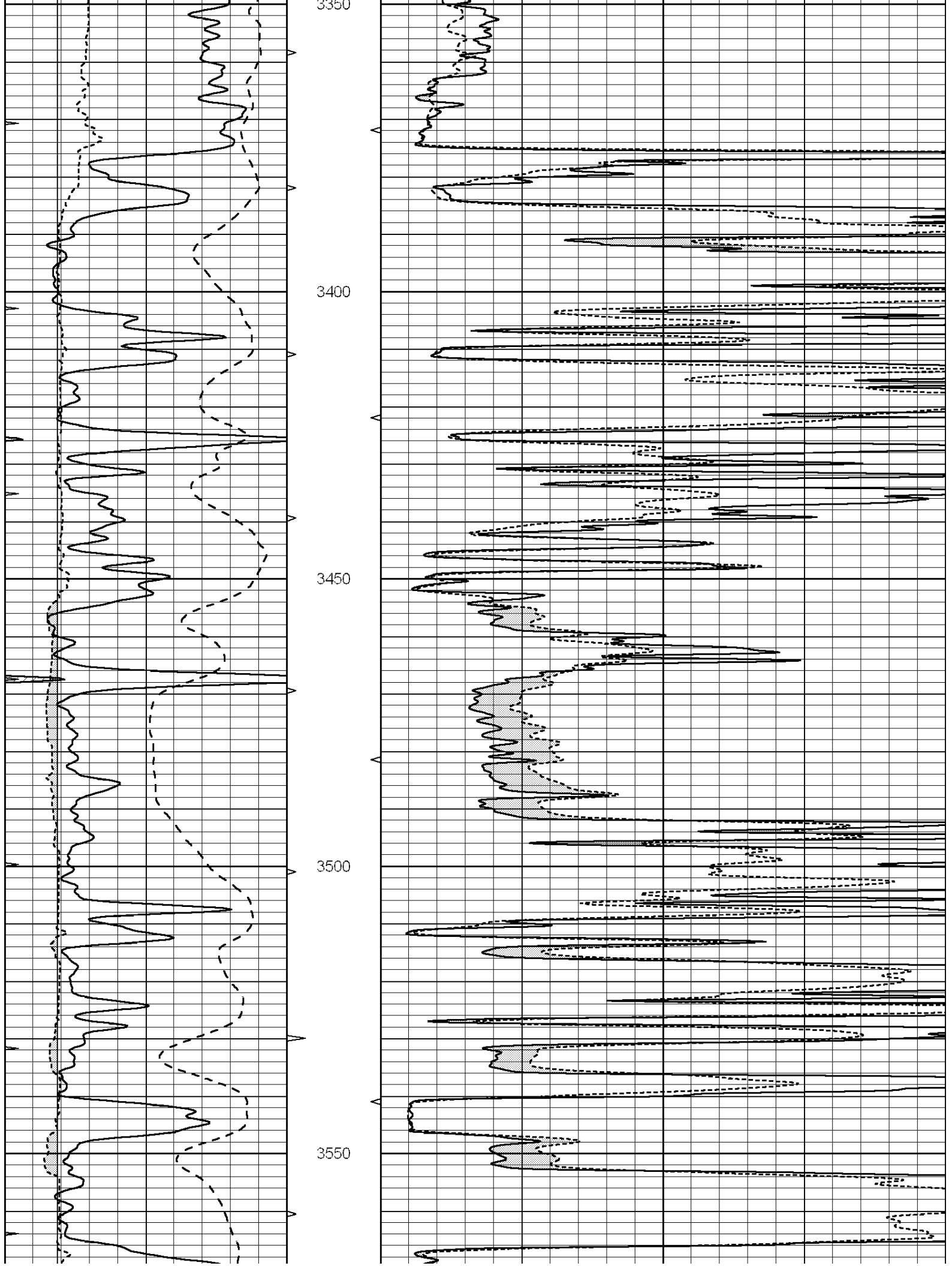


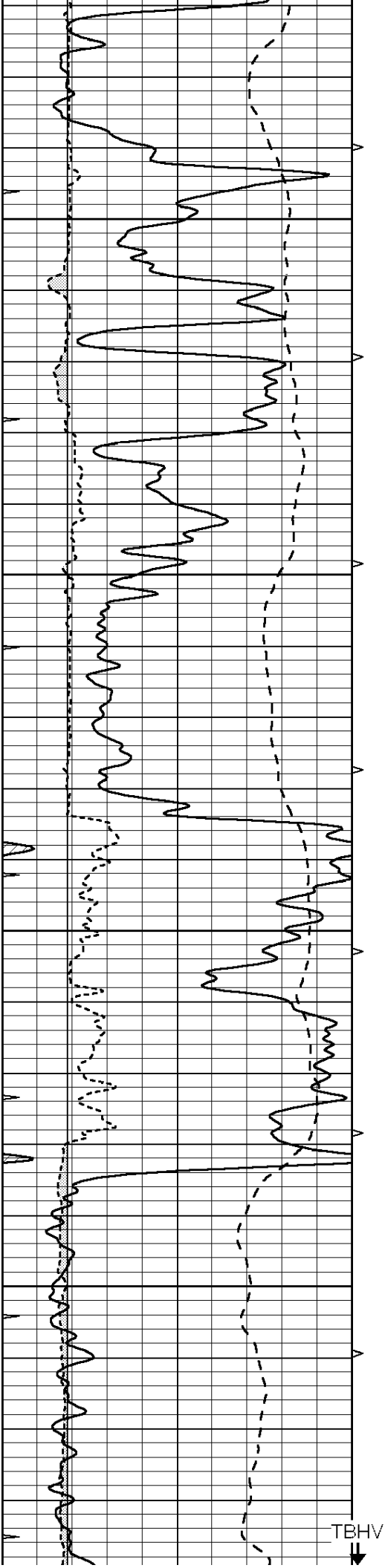












3600

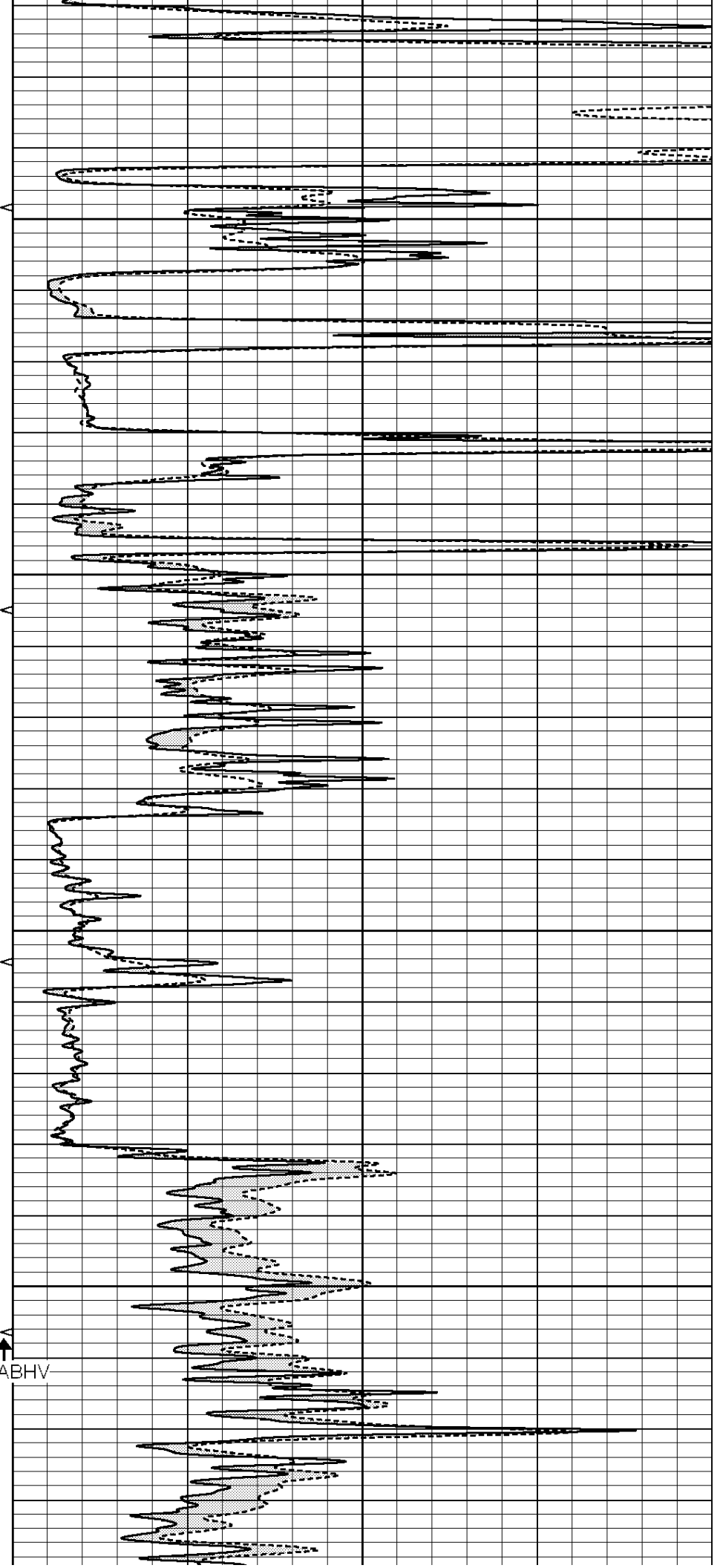
3650

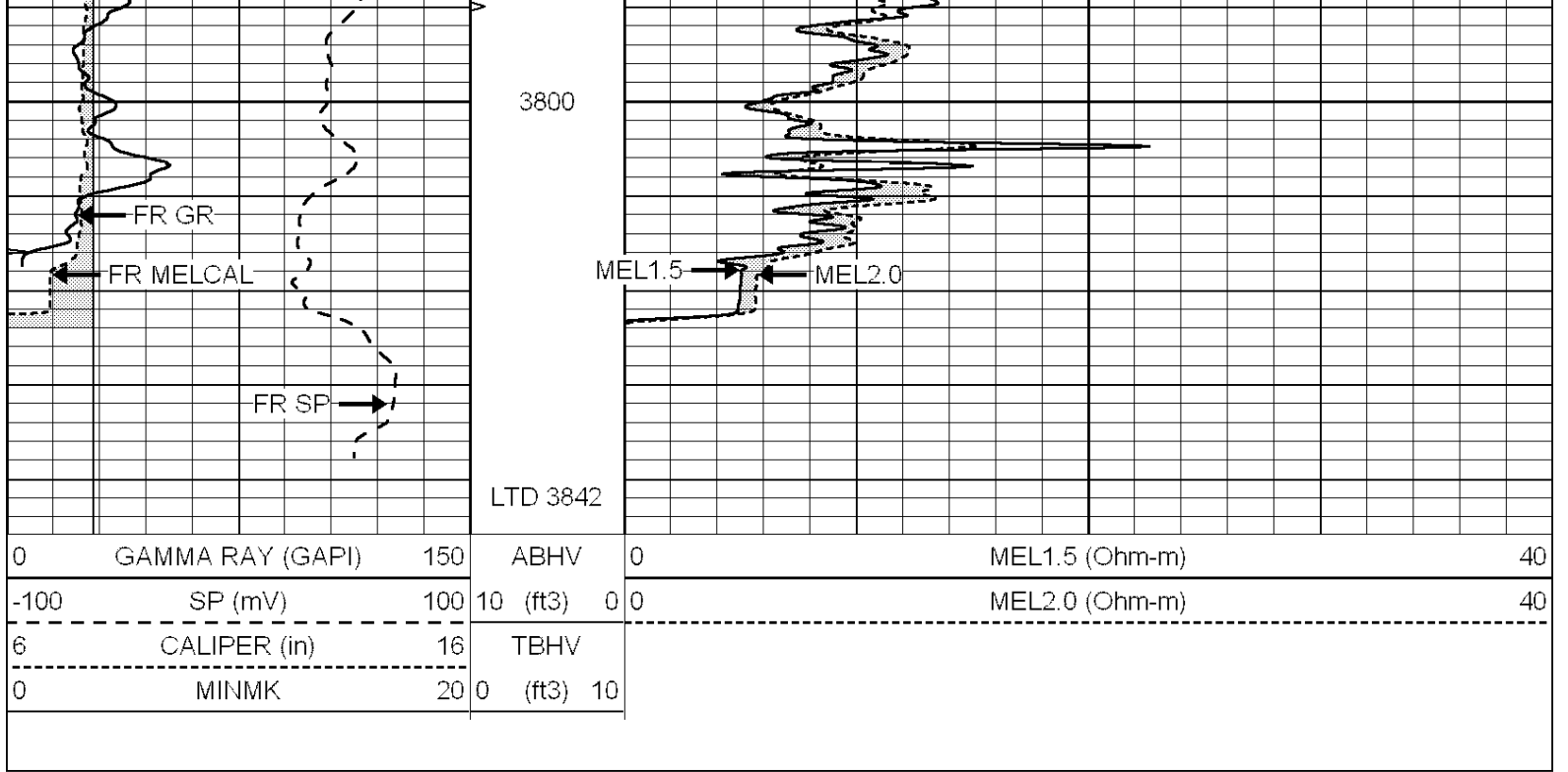
3700

3750

5.5" ABHV

TBHV



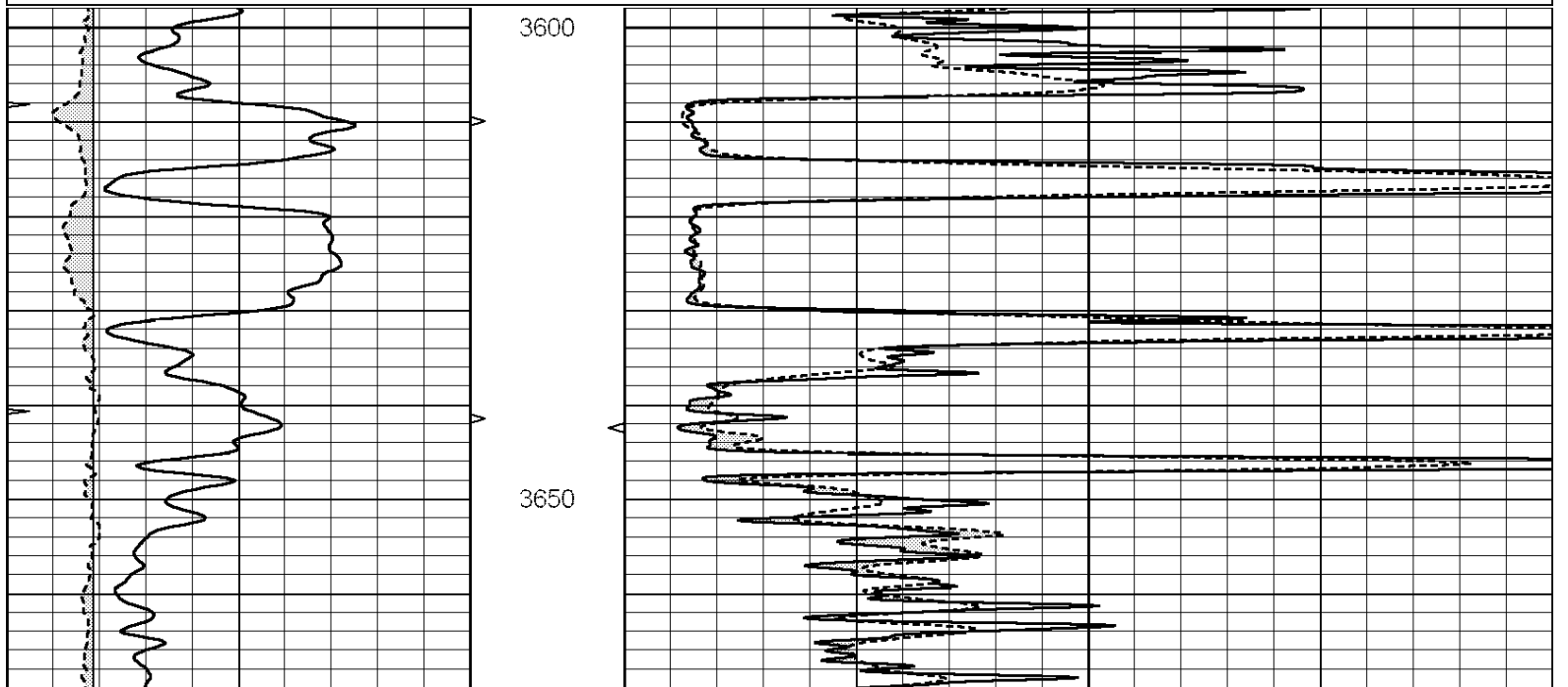


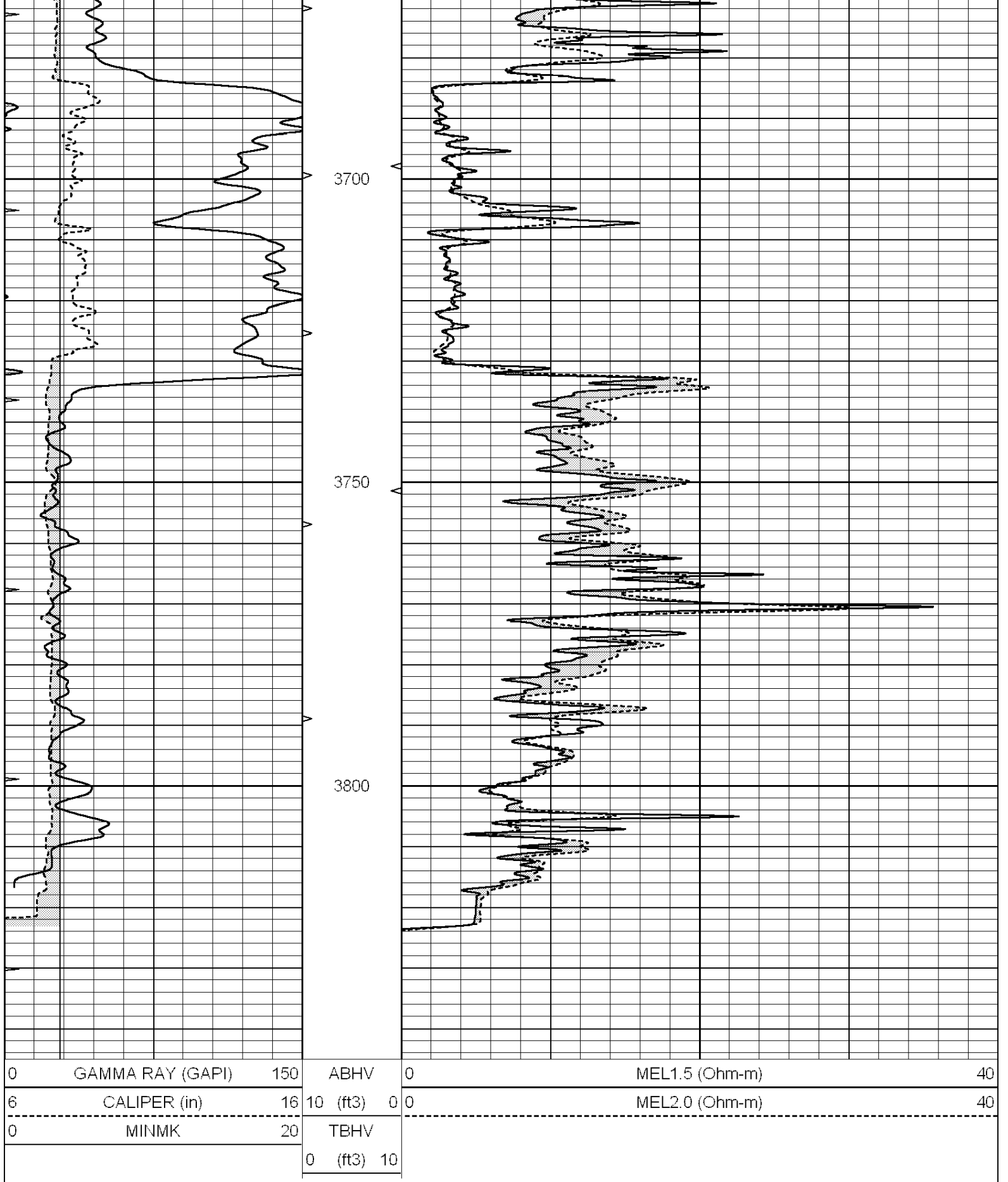
SUPERIOR
Hays,
Kansas

REPEAT SECTION

Database File: 006624pe.db
 Dataset Pathname: pass5.3
 Presentation Format: micro
 Dataset Creation: Tue Mar 29 21:11:29 2011
 Charted by: Depth in Feet scaled 1:240

0	GAMMA RAY (GAPI)	150	ABHV	0	MEL1.5 (Ohm-m)	40
6	CALIPER (in)	16	10 (ft3)	0	MEL2.0 (Ohm-m)	40
0	MINMK	20	TBHV			
			0 (ft3)	10		





Calibration Report

Database File: 006624pe.db
 Dataset Pathname: pass6.5
 Dataset Creation: Tue Mar 29 22:12:12 2011

MICRO5 Calibration Report

Serial Number:	MICRO5
Tool Model:	PROBE
Performed:	Tue Mar 29 20:48:20 2011

Caliper Calibration:	Gain=5.773	Offset=-33.858
	Low Cal	High Cal
References	7.600	15.000
Readings	7.181	8.463

1.5" Calibration:	Gain=40.000	Offset=-0.500
	Low Cal	High Cal
References	0.000	20.000
Readings	0.008	0.991

2" Calibration:	Gain=55.000	Offset=-1.000
	Low Cal	High Cal
References	0.000	20.000
Readings	0.014	0.905

Gamma Ray Calibration Report

Serial Number:	GR3
Tool Model:	OPEN
Performed:	Tue Mar 29 20:48:13 2011

Calibrator Value:	200.0	GAPI
Background Reading:	3.0	cps
Calibrator Reading:	186.0	cps
Sensitivity:	0.9000	GAPI/cps