



**SUPERIOR**  
Hays,  
Kansas

**SONIC**  
LOG

Company HESS OIL COMPANY  
Well WOOD #1-7  
Field FREY  
County STAFFORD  
State KANSAS

Company HESS OIL COMPANY  
Well WOOD #1-7  
Field FREY  
County STAFFORD State KANSAS

Location: API # : 15-185-23674-0000  
330' FNL & 2310' FEL  
SEC 7 TWP 21S RGE 14W  
Permanent Datum GROUND LEVEL Elevation 1927  
Log Measured From KELLY BUSHING 5' A.G.L.  
Drilling Measured From KELLY BUSHING  
Other Services  
CDL/CNL/PE  
DIL/MEL  
Elevation  
K.B. 1932  
D.F. 1930  
G.L. 1927

Date	3/29/11
Run Number	TWO
Depth Driller	3840
Depth Logger	3842
Bottom Logged Interval	3829
Top Log Interval	850
Casing Driller	8 5/8"@900'
Casing Logger	900
Bit Size	7 7/8"
Type Fluid in Hole	CHEMICAL MUD
Density / Viscosity	9.2/50
pH / Fluid Loss	11.0/9.0
Source of Sample	FLOWLINE
Rim @ Meas. Temp	.850@62F
Rmf @ Meas. Temp	.638@62F
Rmc @ Meas. Temp	1.02@62F
Source of Rmf / Rmc	MEASUREMENT
Rim @ BHT	.458@115F
Time Circulation Stopped	4 HOURS
Time Logger on Bottom	6:15 P.M.
Maximum Recorded Temperature	115F
Equipment Number	0836
Location	HAYS, KANSAS
Recorded By	JEFF LUEBBERS
Witnessed By	DEREK PATTERSON
	JAMIE HESS

<<< Fold Here >>>

All interpretations are opinions based on inferences from electrical or other measurements and we cannot and do not guarantee the accuracy or correctness of any interpretation, and we shall not, except in the case of gross or willful negligence on our part, be liable or responsible for any loss, costs, damages, or expenses incurred or sustained by anyone resulting from any interpretation made by any of our officers, agents or employees. These interpretations are also subject to our general terms and conditions set out in our current Price Schedule.

**Comments**

THANK YOU FOR USING SUPERIOR WELL SERVICE HAYS, KANSAS (785) 628-6395  
DIRECTIONS  
PAWNEE ROCK, KS. 2 N.E. ON HWY 156 TO "RADIUM RD." 7S. ON BLKTOP TO "RD. 200", 1/2W., S. INTO

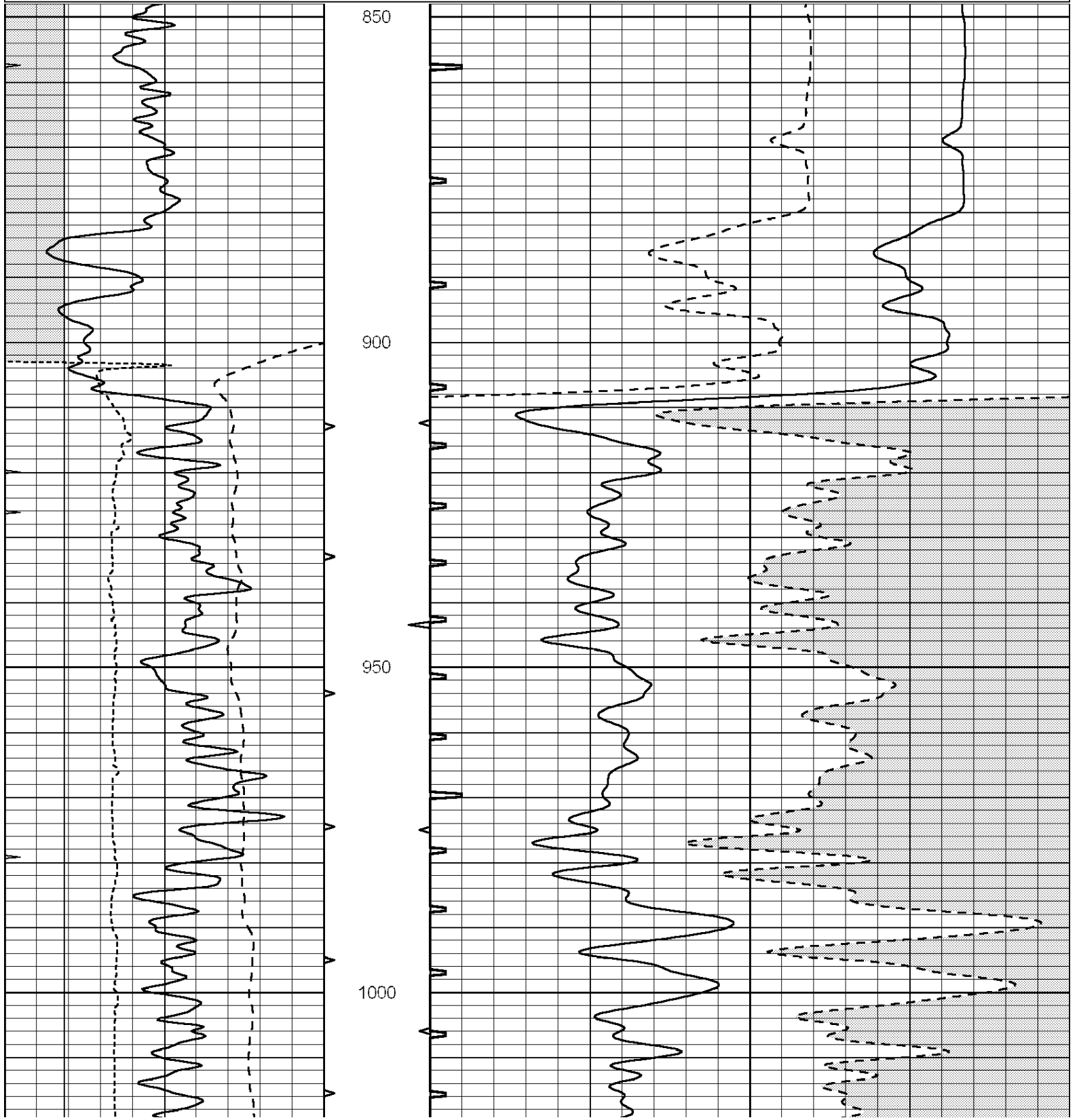


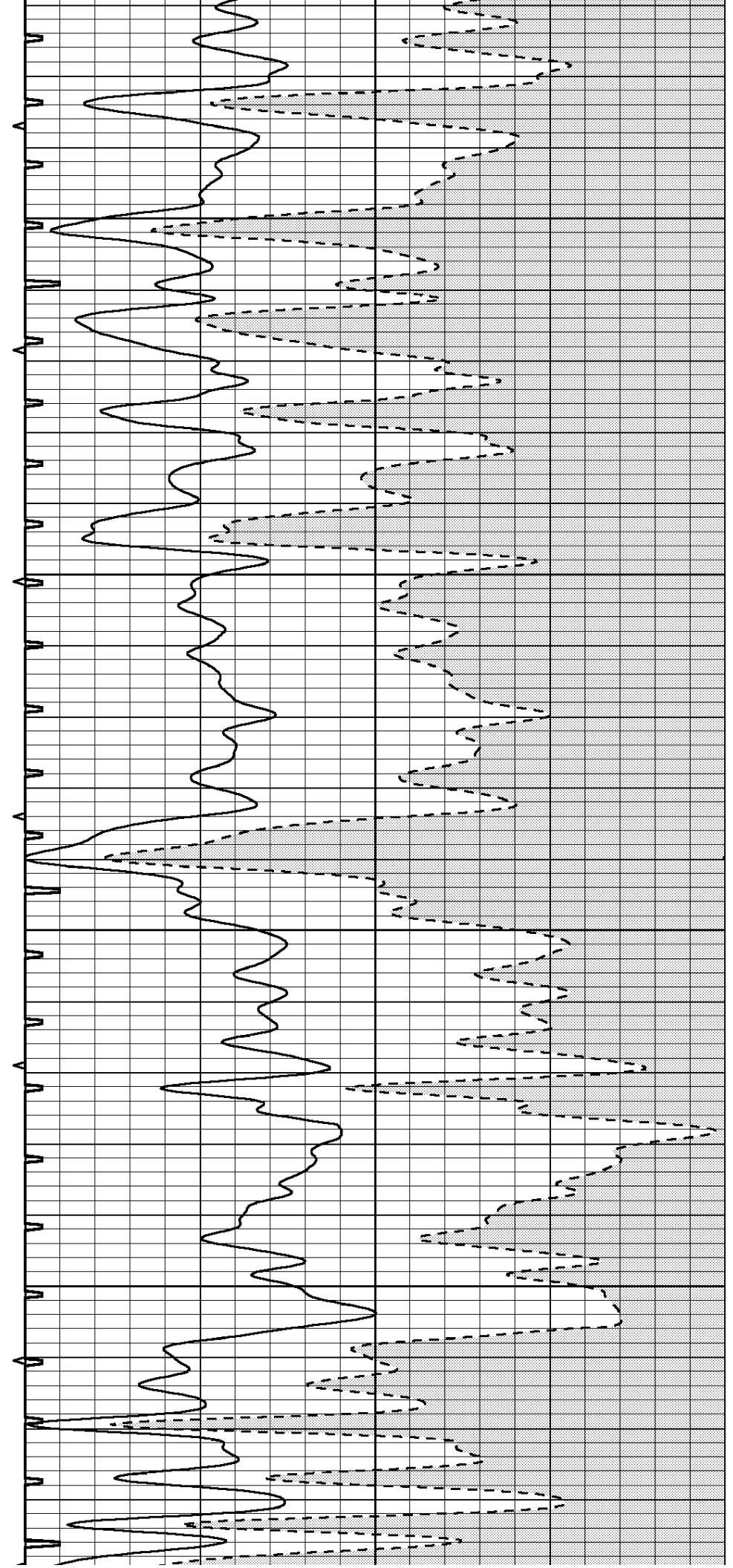
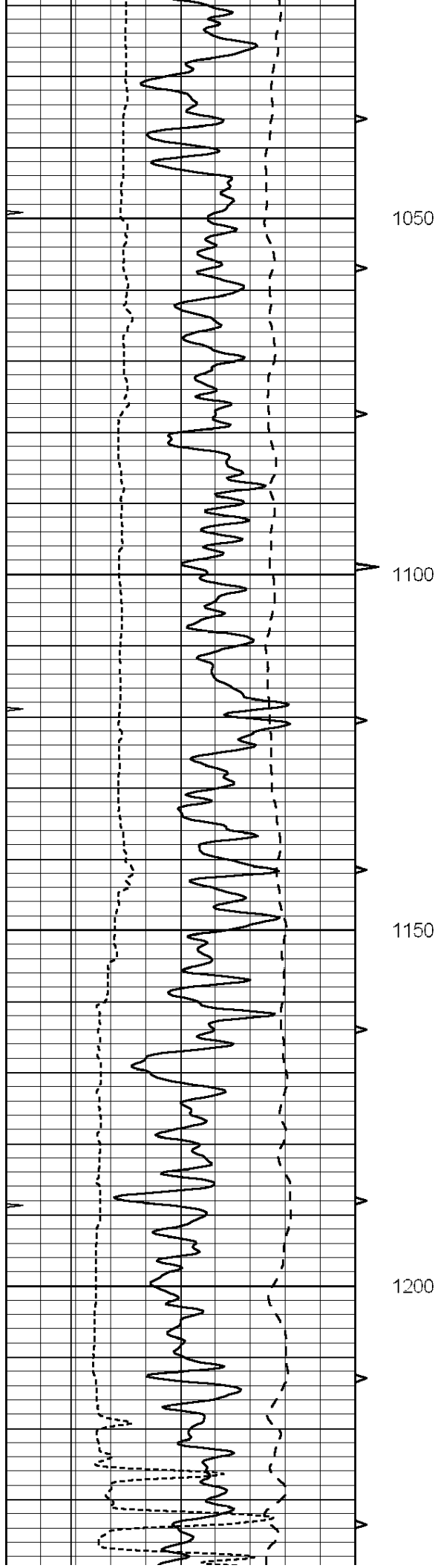
**SUPERIOR**  
Hays,  
Kansas

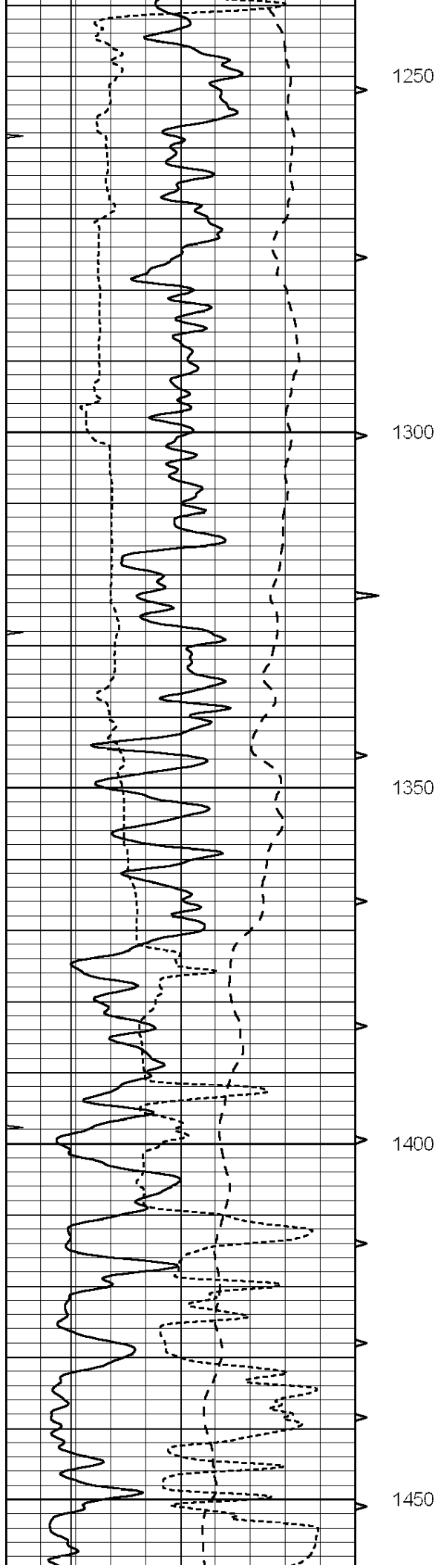
**MAIN SECTION**

Database File: 006624pe.db  
 Dataset Pathname: pass6.5  
 Presentation Format: slt  
 Dataset Creation: Tue Mar 29 22:12:12 2011  
 Charted by: Depth in Feet scaled 1:240

0	GAMMA RAY (GAPI)	150	ABHV	140	DELTA TIME (usec/ft)	40
6	CALIPER (in)	16	10 (ft3)	0	30	SONIC POROSITY (pu)
-100	SP (mV)	100	TBHV	0	ITT (msec)	20
0	MINMK	20	0 (ft3)	10		







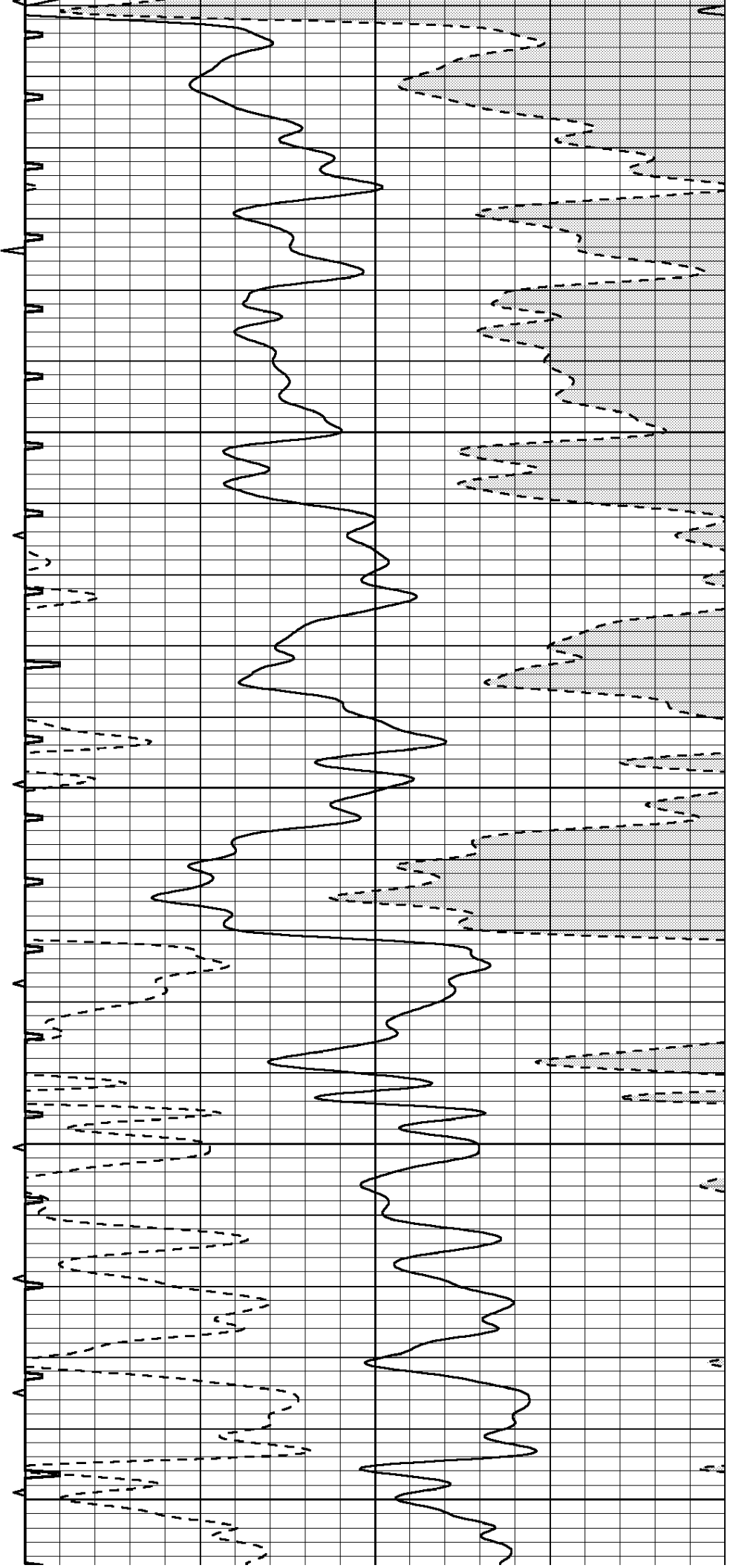
1250

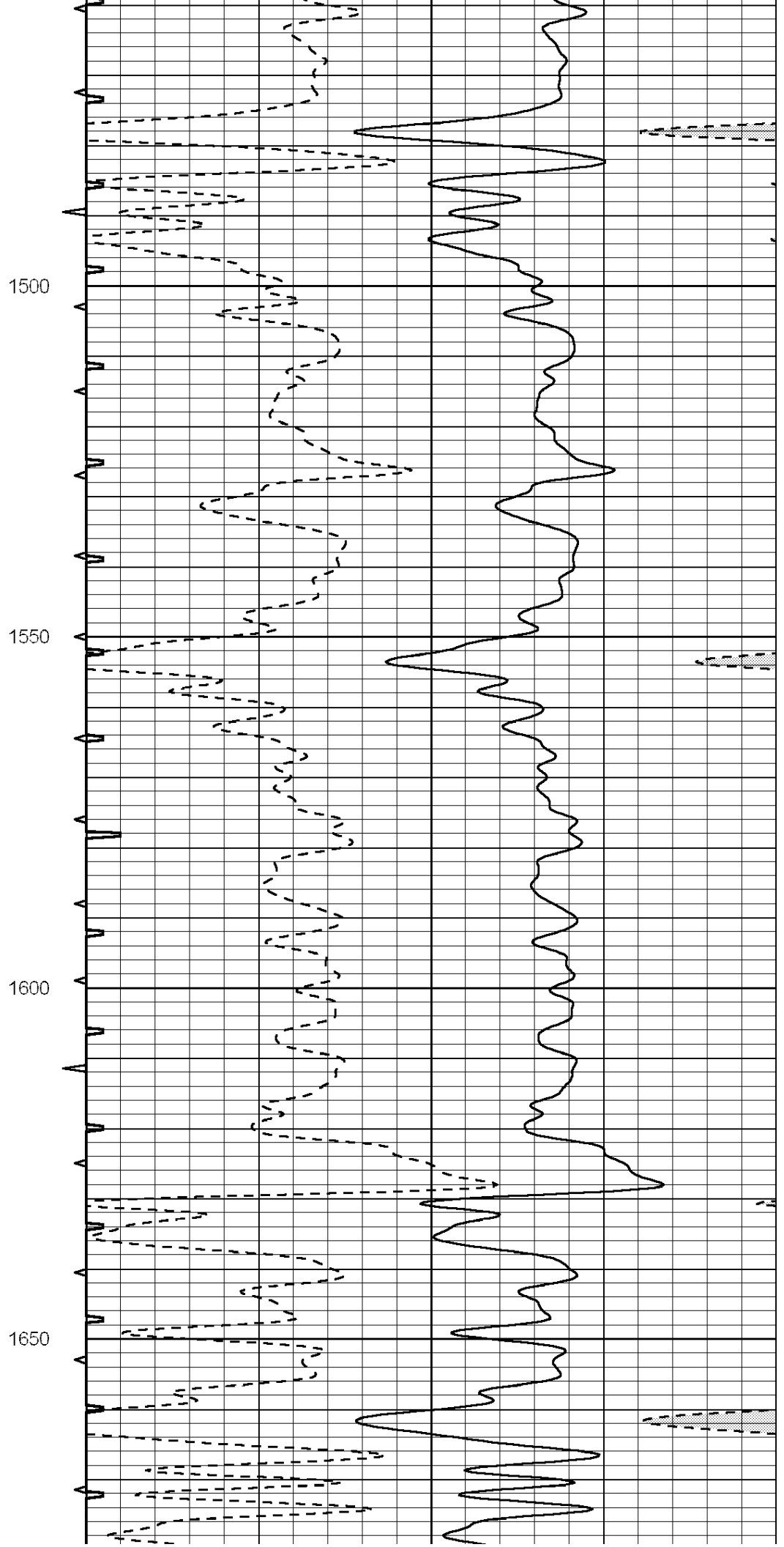
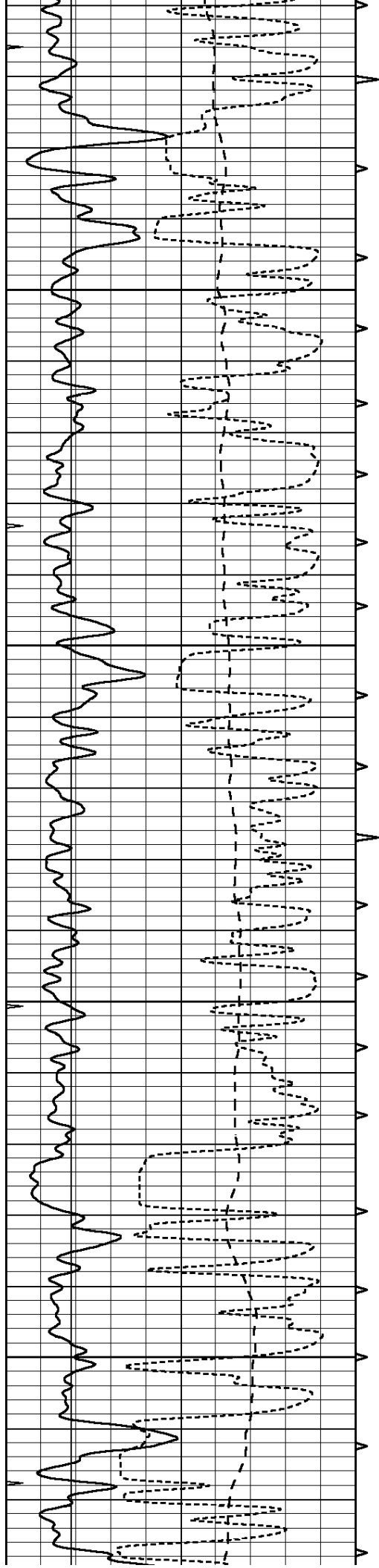
1300

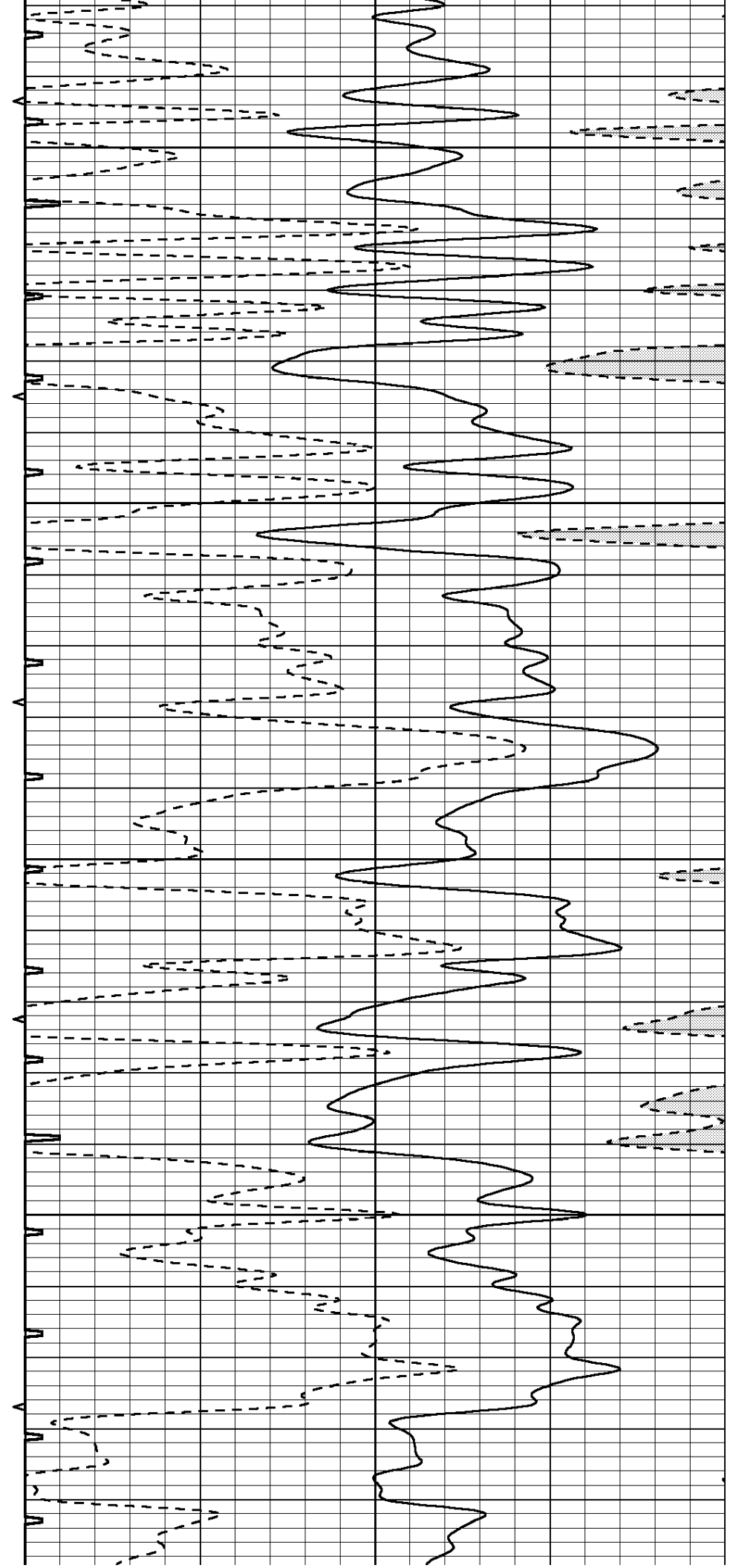
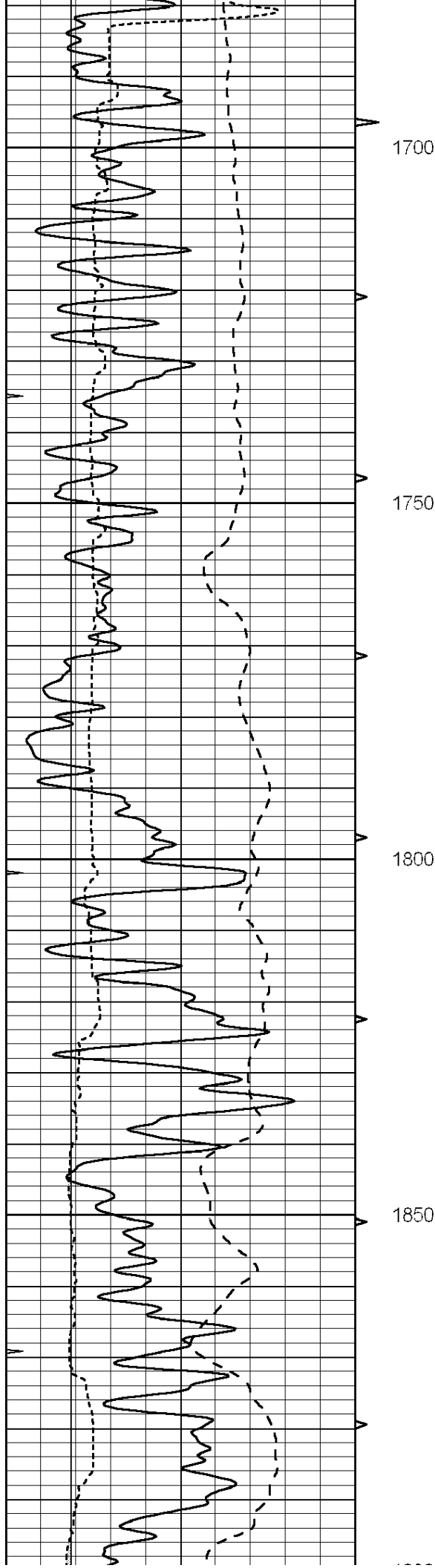
1350

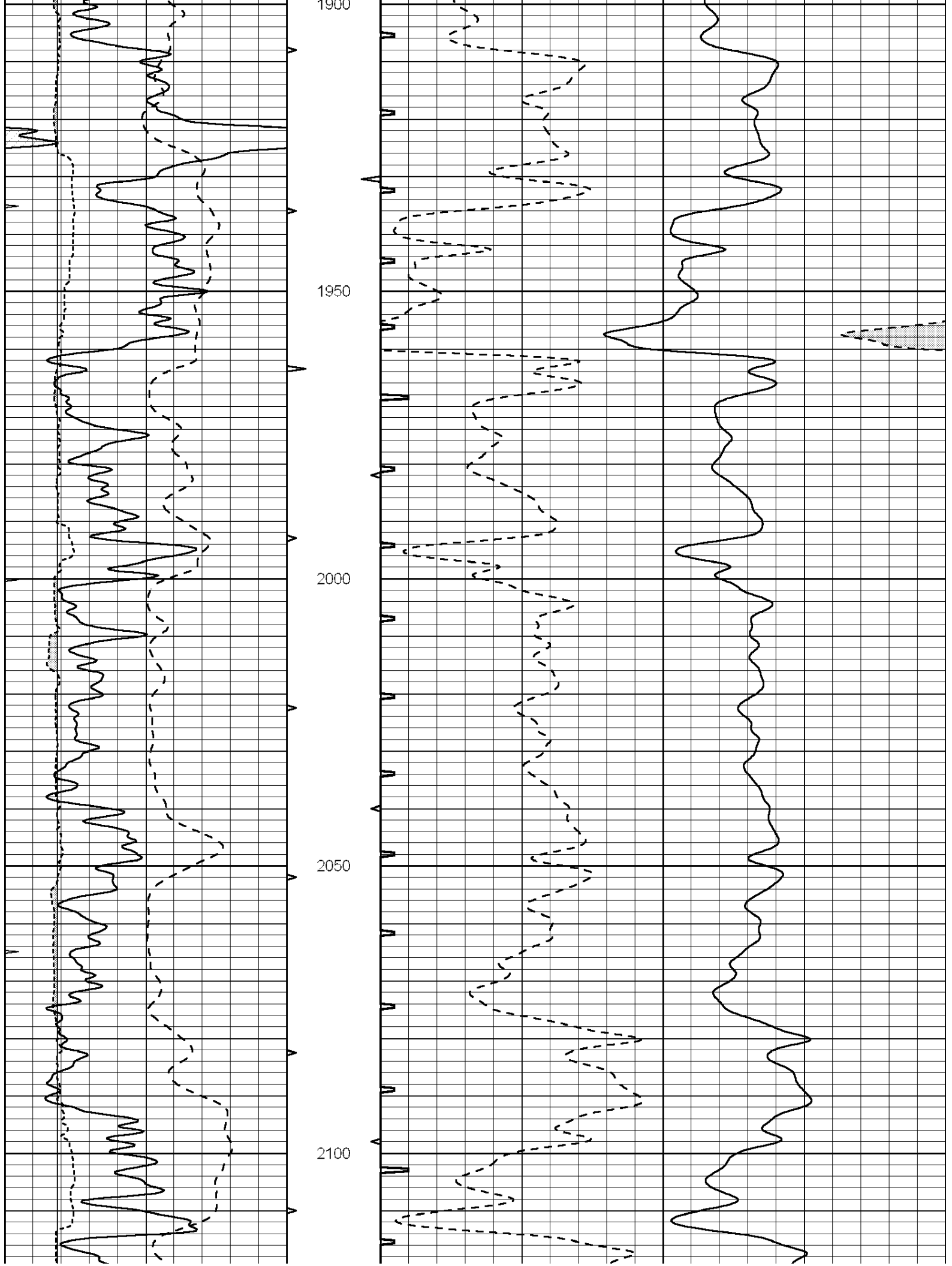
1400

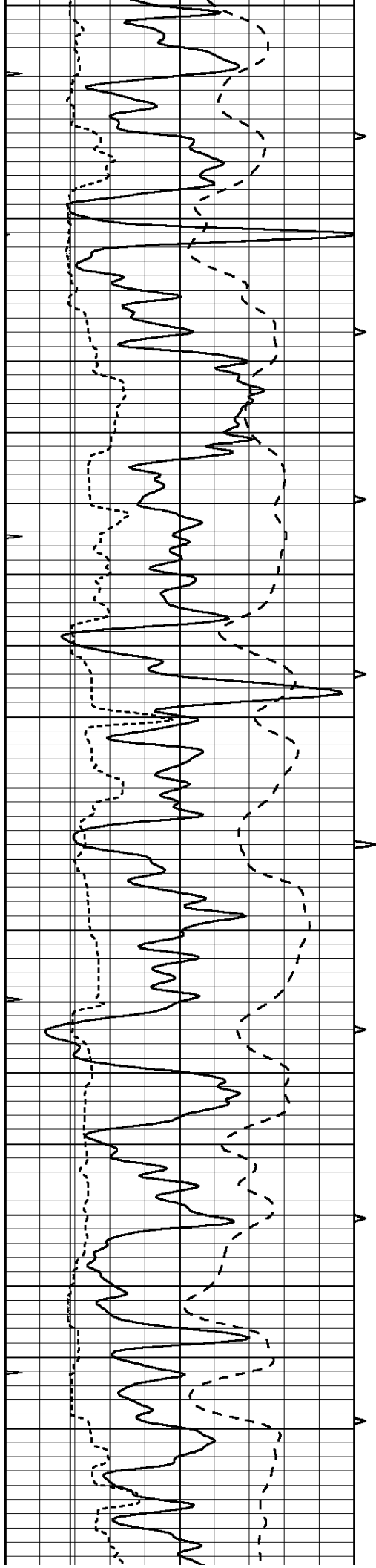
1450









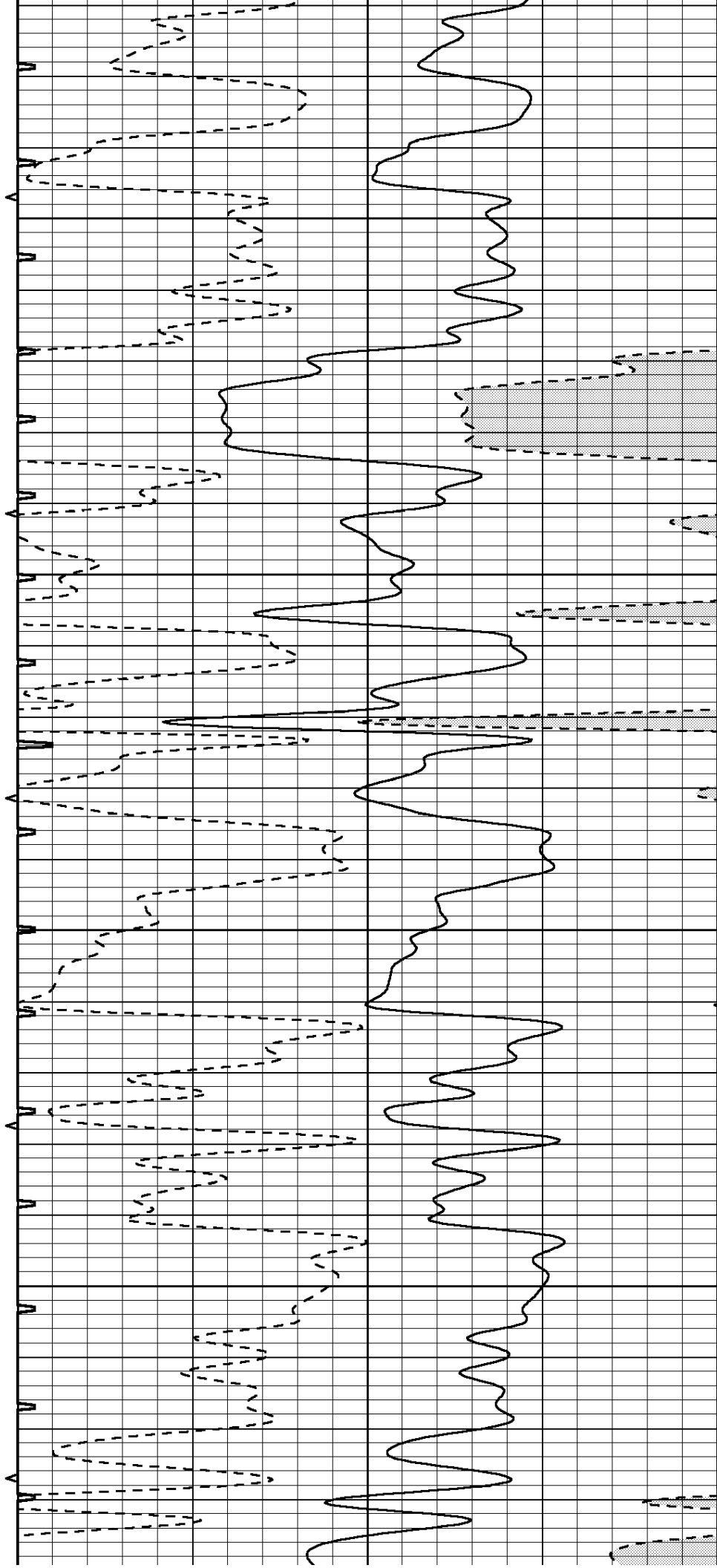


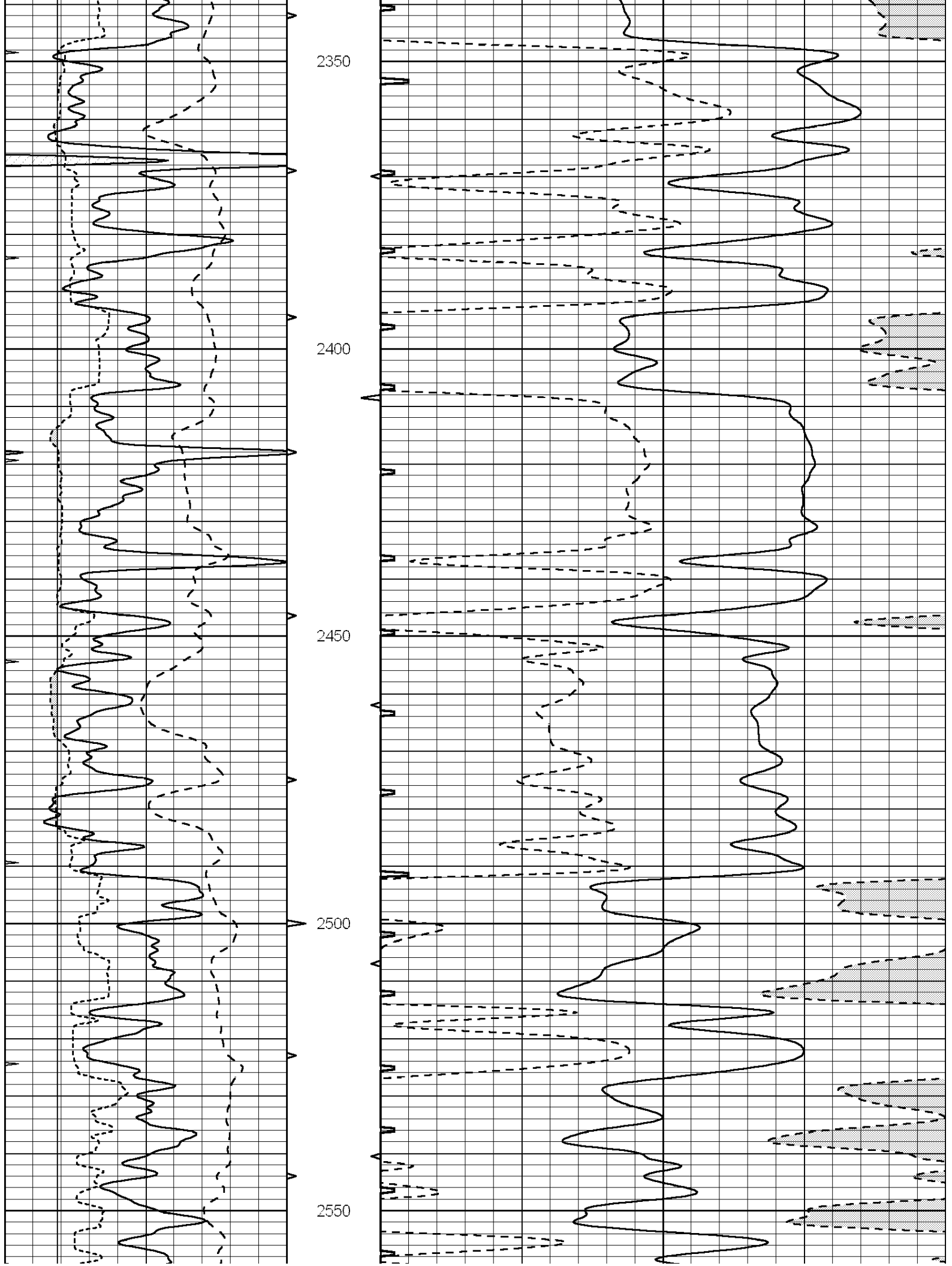
2150

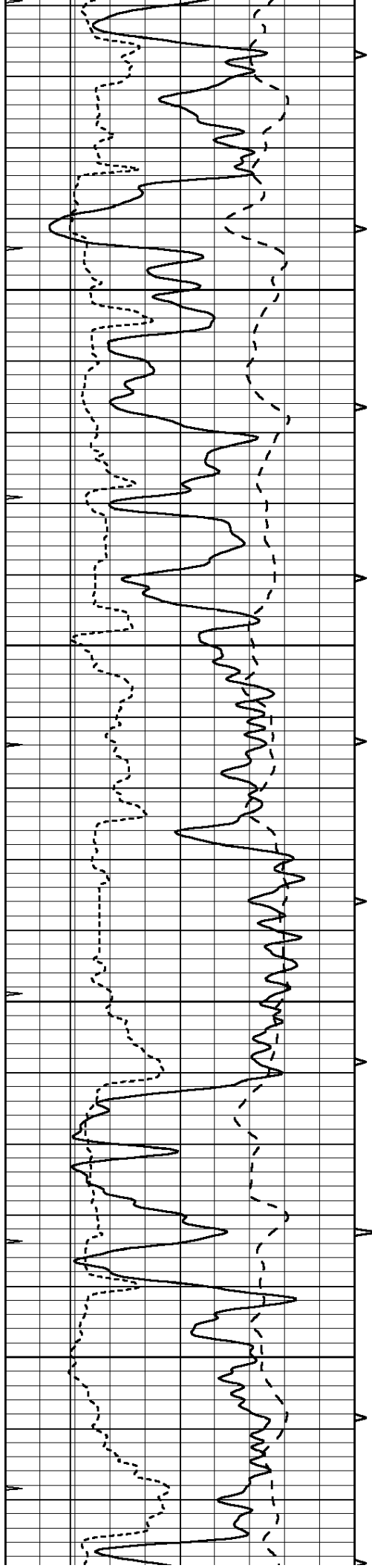
2200

2250

2300





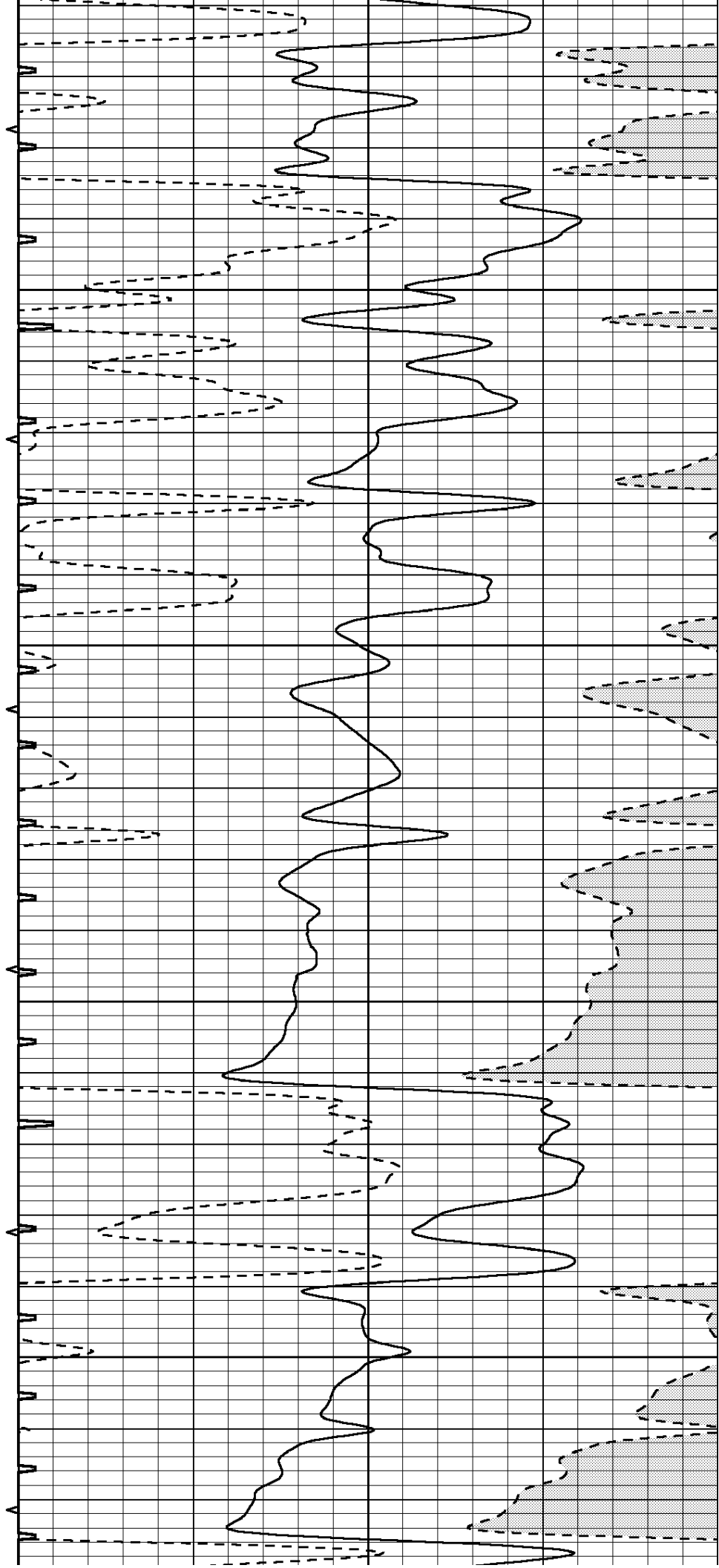


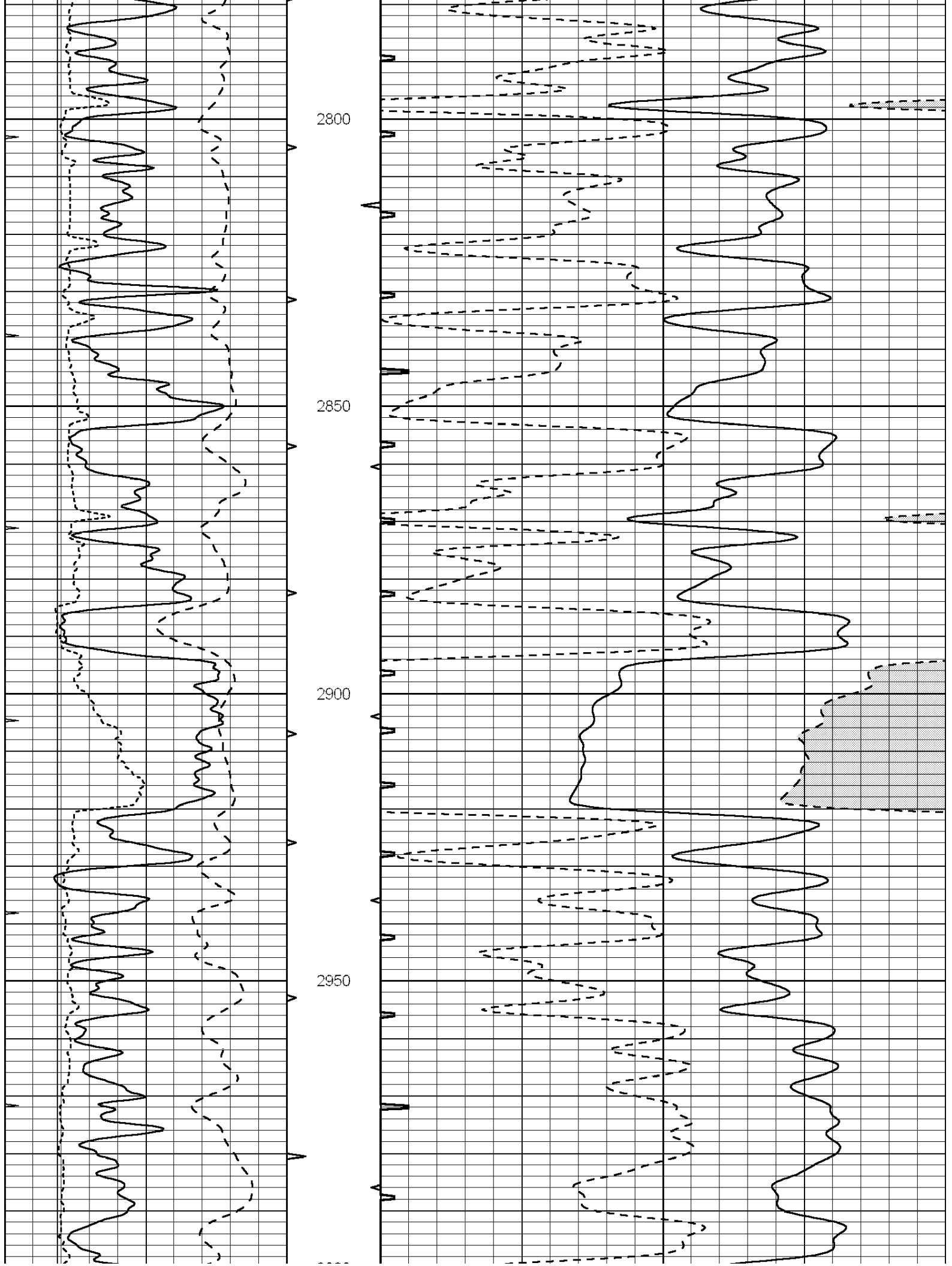
2600

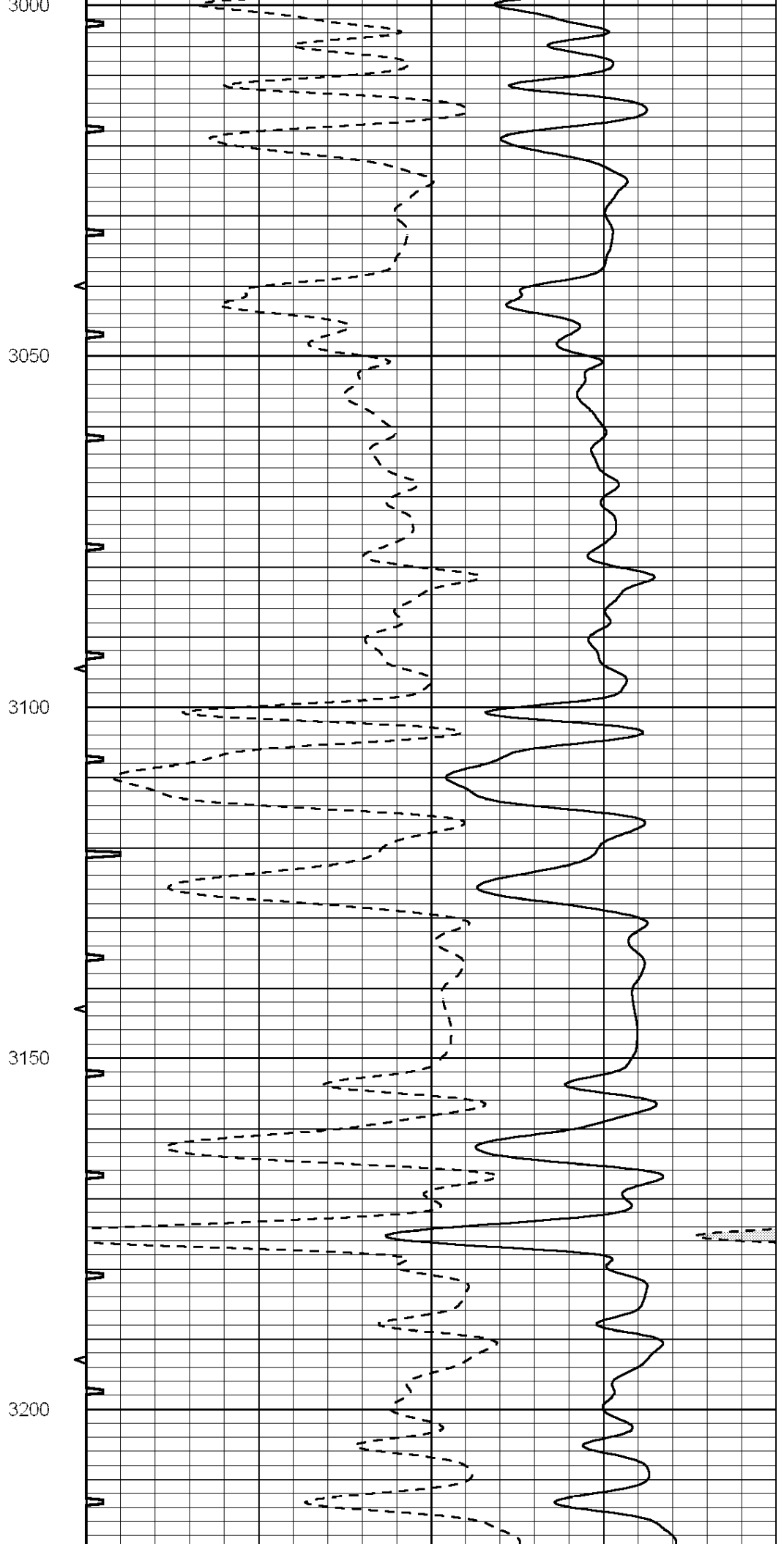
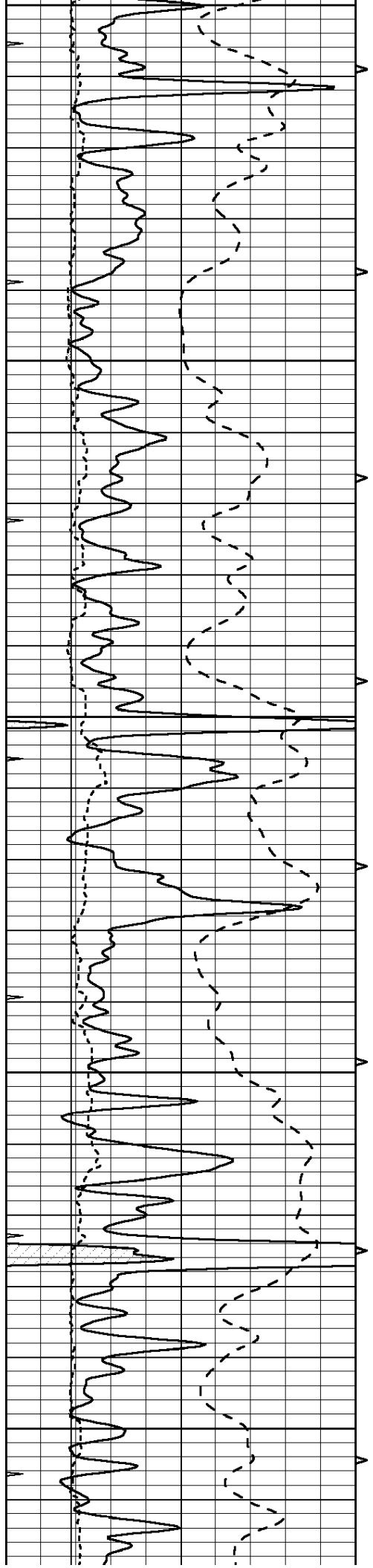
2650

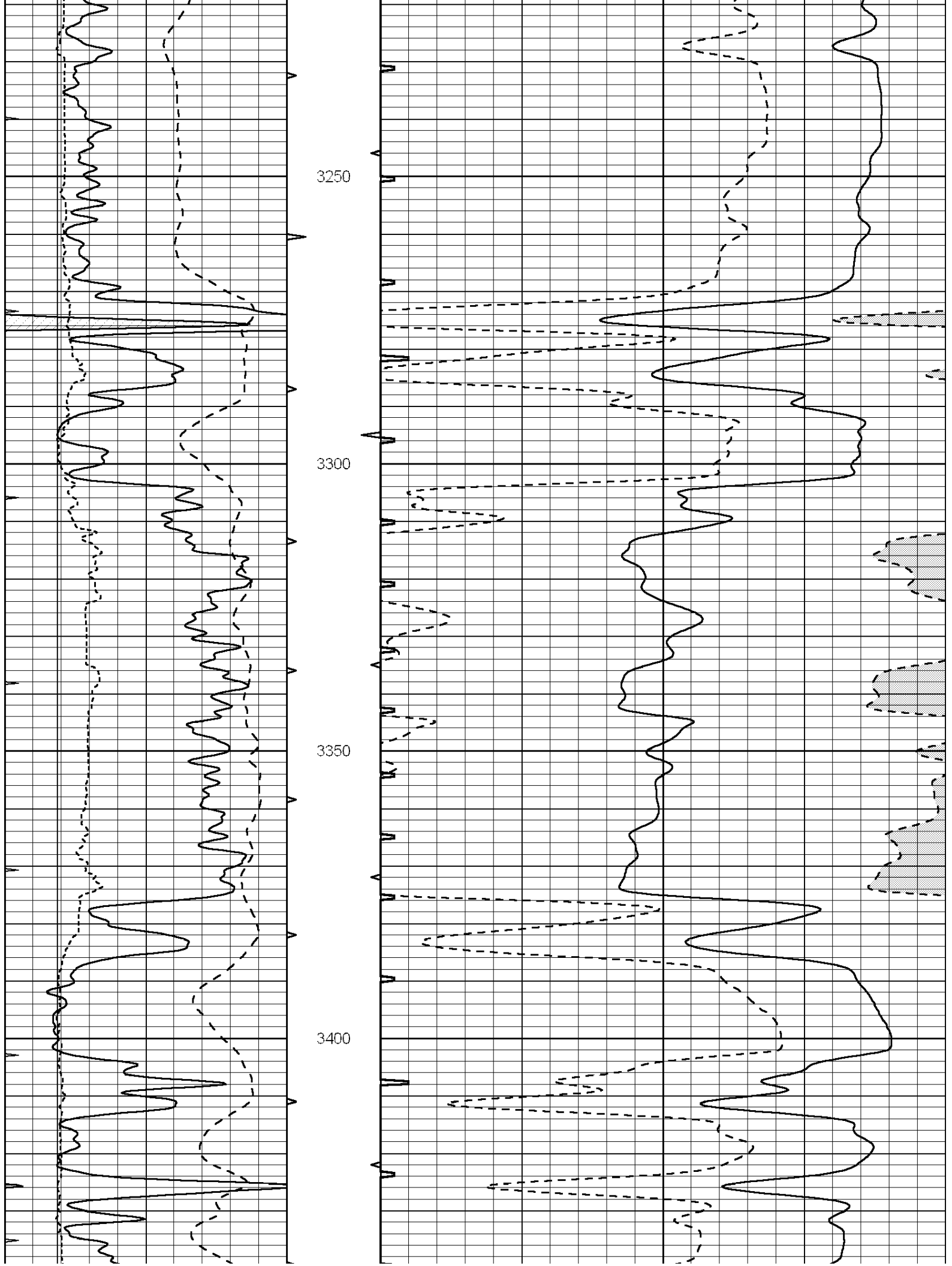
2700

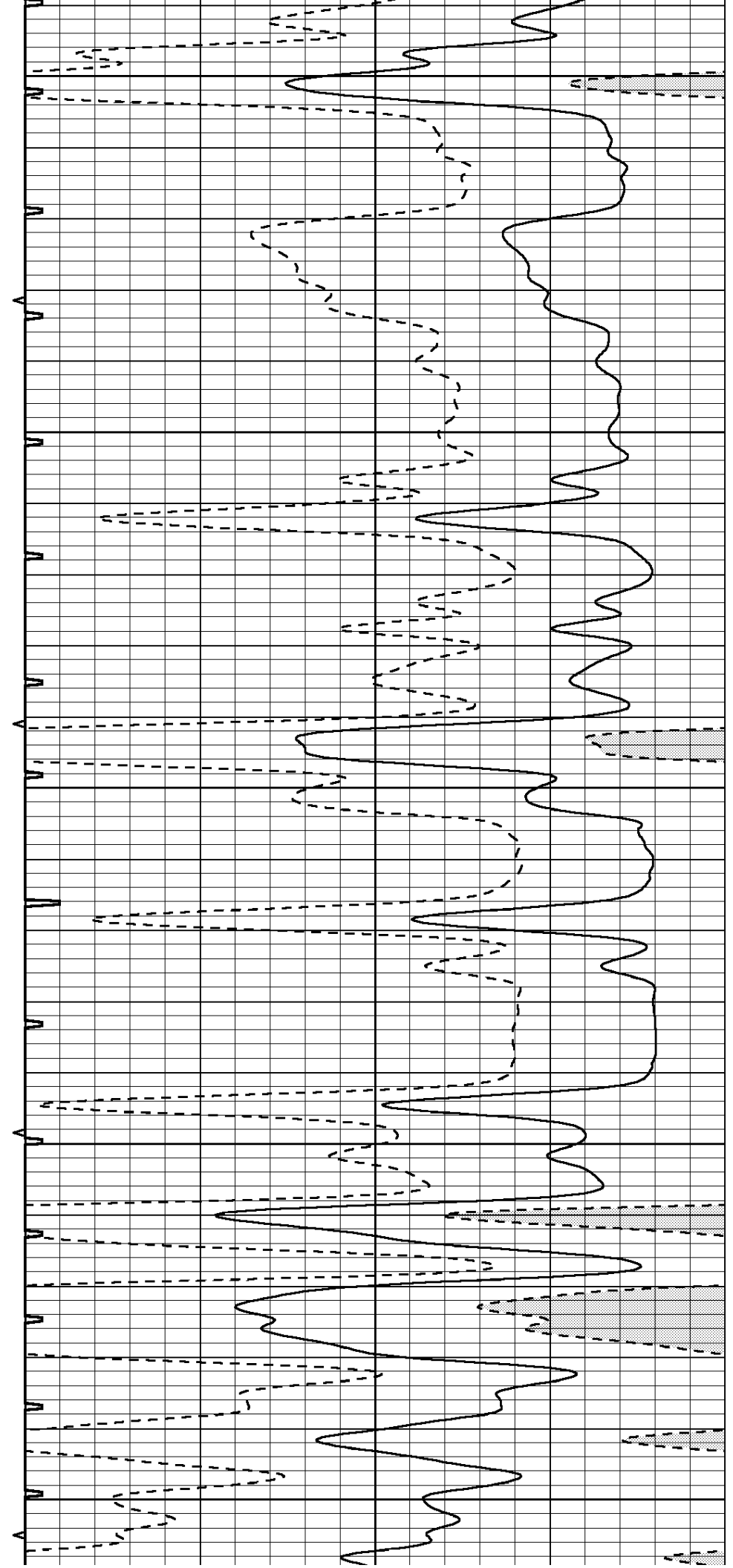
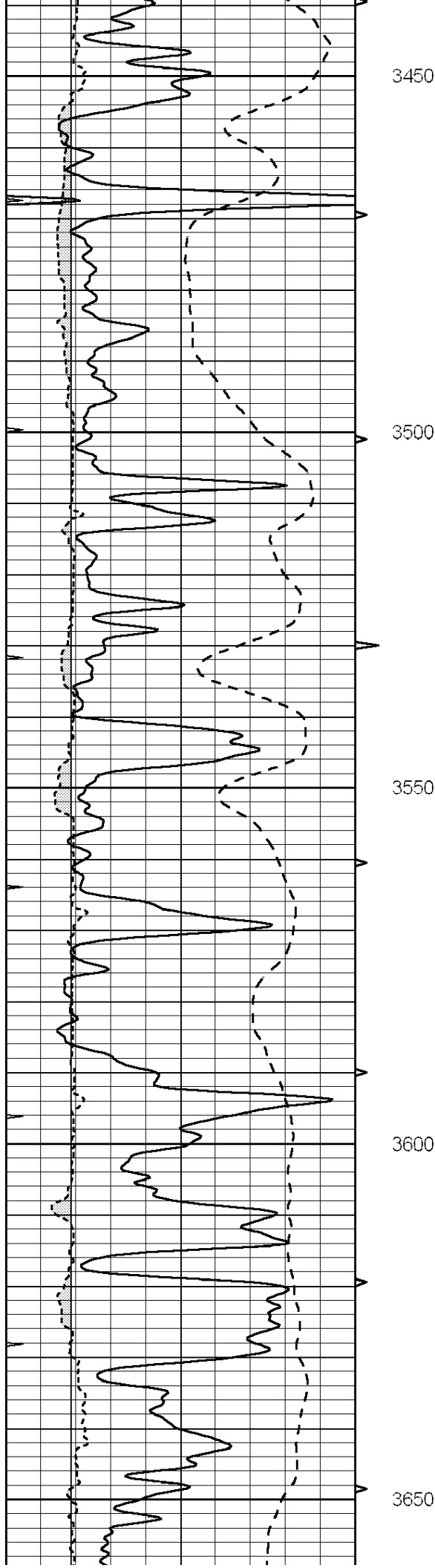
2750

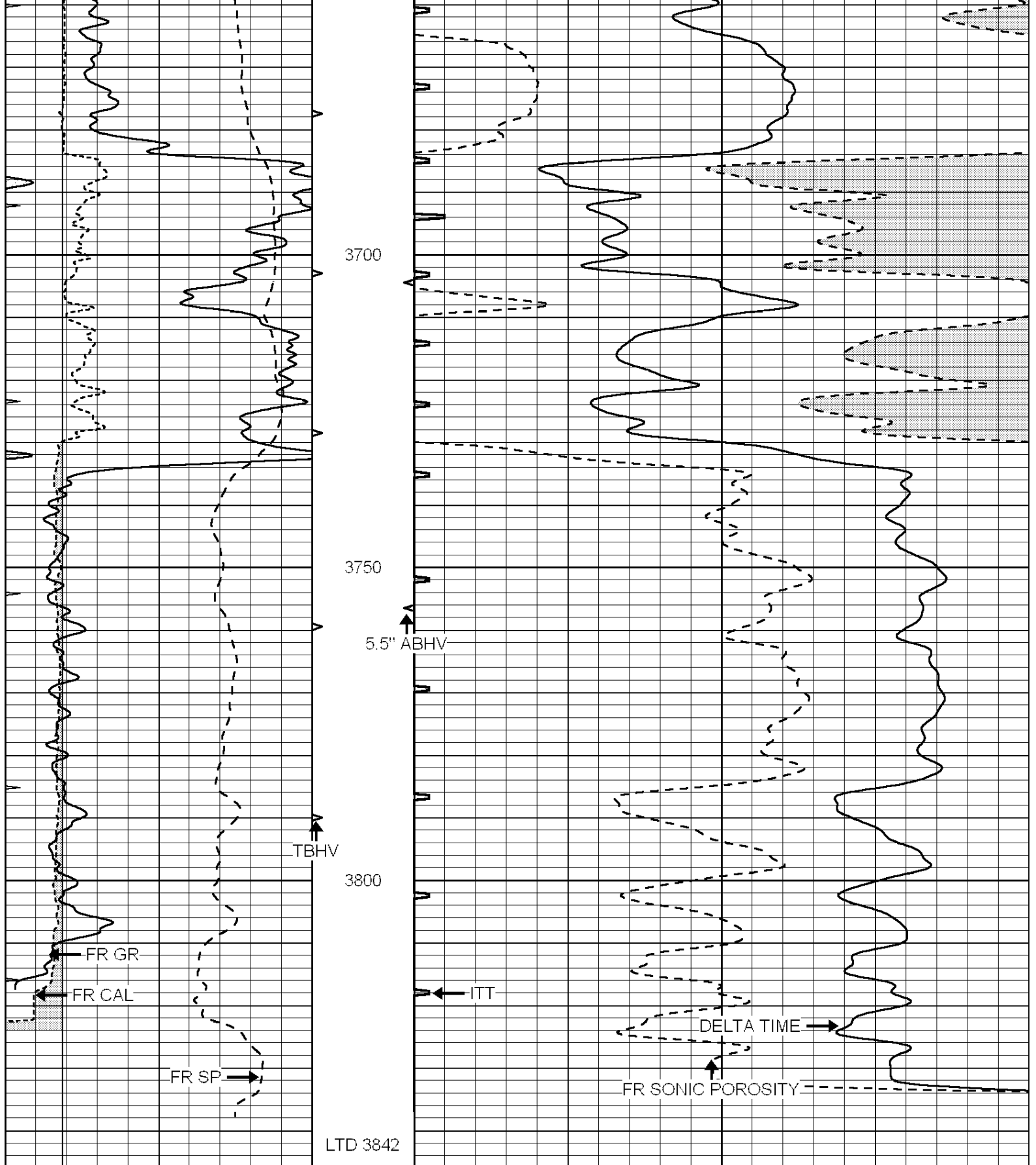












0	GAMMA RAY (GAPI)	150	ABHV	140	DELTA TIME (usec/ft)	40
6	CALIPER (in)	16	10 (ft3)	0	30	SONIC POROSITY (pu)
-100	SP (mV)	100	TBHV	0	ITT (msec)	20
0	MINMK	20	0 (ft3)	10		



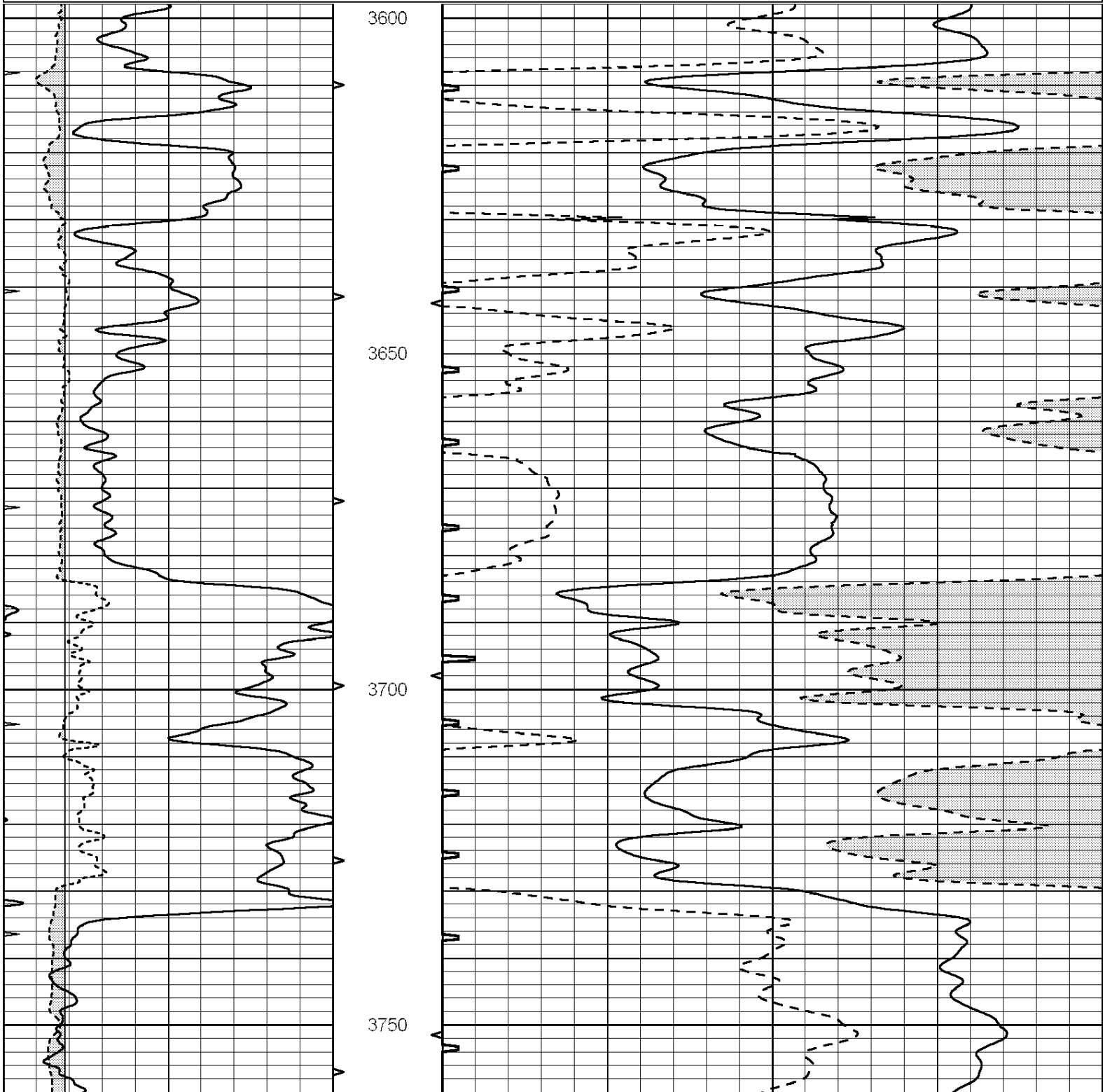


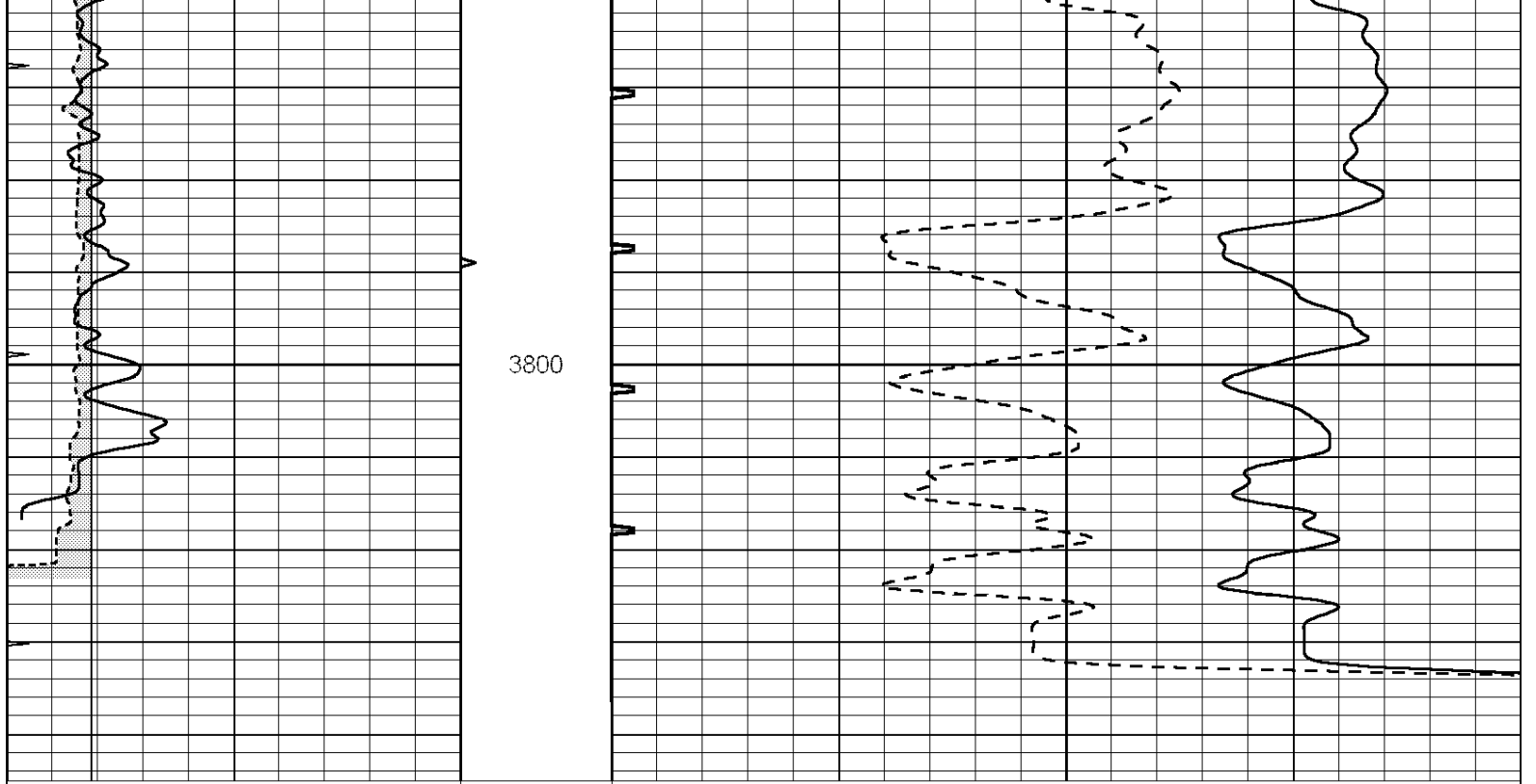
SUPERIOR  
Hays,  
Kansas

# REPEAT SECTION

Database File: 006624pe.db  
 Dataset Pathname: pass5.3  
 Presentation Format: slt  
 Dataset Creation: Tue Mar 29 21:11:29 2011  
 Charted by: Depth in Feet scaled 1:240

0	GAMMA RAY (GAPI)	150	ABHV	140	DELTA TIME (usec/ft)	40	
6	CALIPER (in)	16	10 (ft3)	0	30	SONIC POROSITY (pu)	-10
0	MINMK	20	TBHV	0	ITT (msec)	20	
			0 (ft3)	10			





0	GAMMA RAY (GAPI)	150	ABHV	140	DELTA TIME (usec/ft)	40
6	CALIPER (in)	16	10 (ft3) 0	30	SONIC POROSITY (pu)	-10
0	MINMK	20	TBHV	0	ITT (msec)	20
			0 (ft3) 10			