



MIDWEST SURVEYS
 LOGGING - PERFORATING - CONSULTING SERVICES
 P.O. Box 68, Osawatomie, KS 66064
 913 / 755 - 2128

GAMMA RAY / NEUTRON / CCL

File No.

Company **Energex Kansas, Inc.**

Well **Needham No. BSI-1**

Field **Paola / Rantoul**

County **Franklin** State **Kansas**

Location **4915 FSL & 4940' FEL**

SE-NW-NW-NW

Sec. **17** Twp. **18S** Rge. **21E**

Permanent Datum **GL** Elevation **NA**

Log Measured From **GL** K.B. **NA**

Drilling Measured From **GL** D.F. **NA**

Elevation **GL** G.L. **NA**

Date **3-11-2011**

Run Number **One**

Depth Driller **657.0**

Bottom Logged Interval **655.0**

Top Log Interval **20.0**

Fluid Level **Full**

Type Fluid **Water**

Density / Viscosity **NA**

Salinity - PPM Cl **NA**

Max Recorded Temp **NA**

Estimated Cement Top **0.0**

Equipment No. **104** Location **Osawatomie**

Recorded By **Gary Winkisch**

Witnessed By **Jay Schrendel**

BOREHOLE RECORD				CASINGS RECORD			
Run No.	BIT	FROM	TO	SIZE	WGT.	FROM	TO
One	8.625"	0.0	20.0	6.50"	0.0	0.0	20.0
Two	6.25"	20.0	690.0	2.875"	0.0	0.0	657.0

<<< Fold Here >>>

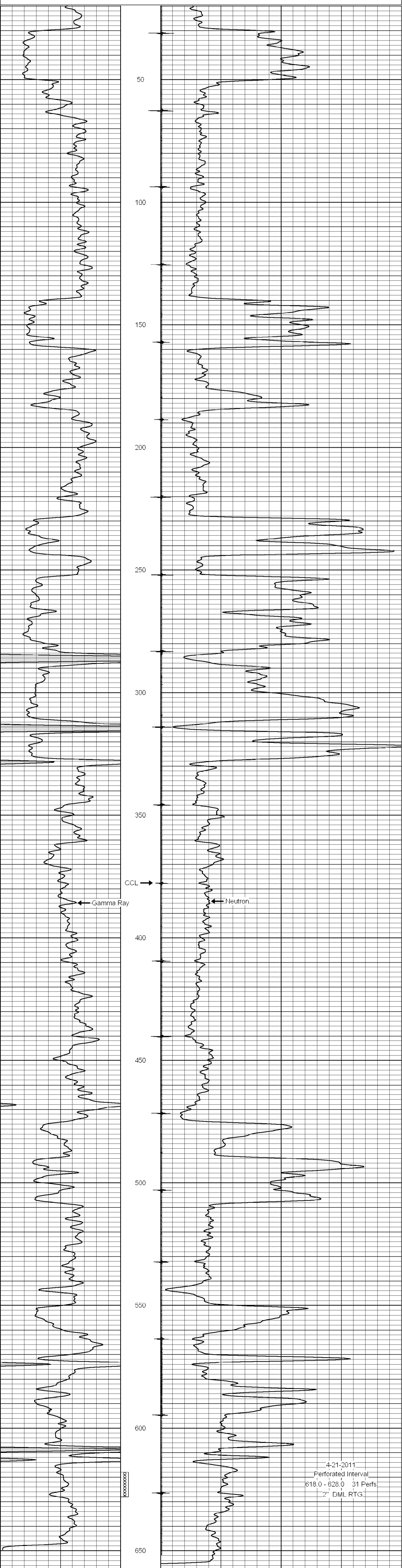
All interpretations are opinions based on inferences from electrical or other measurements and we cannot and do not guarantee the accuracy or correctness of any interpretation, and we shall not, except in the case of gross or willful negligence on our part, be liable or responsible for any loss, costs, damages, or expenses incurred or sustained by anyone resulting from any interpretation made by any of our officers, agents or employees. These interpretations are also subject to our general terms and conditions set out in our current Price Schedule.

Comments

Drilling Contractor :
JTC Oil, Inc.

Database File: ndhm1bsi.db
 Dataset Pathname: pass1
 Presentation Format: gr-n-ccl
 Dataset Creation: Fri Mar 11 13:01:48 2011 by Log Warrior Version 6.6
 Charted by: Depth in Feet scaled 1:240

0	Gamma Ray	150	100	Neutron	1800
150	Gamma Ray	300			



0	Gamma Ray	150	100	Neutron	1800
150	Gamma Ray	300			