



**SUPERIOR  
Hays,  
Kansas**

**COMPENSATED  
DENSITY / NEUTRON  
LOG**

Company **SHELBY, LLC.**  
Well **MILLER #1-16**  
Field **JAMES**  
County **BARTON** State **KANSAS**

Company **SHELBY, LLC.**  
Well **MILLER #1-16**  
Field **JAMES**  
County **BARTON**  
State **KANSAS**

Location: **API # : 15-009-25487**  
**1265' FSL & 1894' FEL**  
**SEC 16 TWP 19S RGE 12W**  
Permanent Datum **GROUND LEVEL** Elevation **1861**  
Log Measured From **KELLY BUSHING 12' A.G.L.**  
Drilling Measured From **KELLY BUSHING**  
Other Services  
**DIL**  
**SONIC/MEL**  
Elevation  
K.B. 1883  
D.F.  
G.L. 1861

Date	11-8-10
Run Number	ONE
Depth Driller	3550
Depth Logger	3548
Bottom Logged Interval	3524
Top Log Interval	2800
Casing Driller	738
Casing Logger	738
Bit Size	7.875
Type Fluid in Hole	CHEMICAL MUD
Density / Viscosity	9.1 / 48
pH / Fluid Loss	10.0 / 8.0
Source of Sample	FLOWLINE
Rm @ Meas. Temp	0.55 @ 73F
Rmf @ Meas. Temp	0.41 @ 73F
Rmc @ Meas. Temp	0.66 @ 73F
Source of Rmf / Rmc	MEASURED
Rm @ BHT	.370 @ 108F
Time Circulation Stopped	2 HOURS
Time Logger on Bottom	11:50 A.M.
Maximum Recorded Temperature	108F
Equipment Number	860
Location	HAYS, KS.
Recorded By	RUPP
Witnessed By	KEITH REAVIS

<<< Fold Here >>>

All interpretations are opinions based on inferences from electrical or other measurements and we cannot and do not guarantee the accuracy or correctness of any interpretation, and we shall not, except in the case of gross or willful negligence on our part, be liable or responsible for any loss, costs, damages, or expenses incurred or sustained by anyone resulting from any interpretation made by any of our officers, agents or employees. These interpretations are also subject to our general terms and conditions set out in our current Price Schedule.

Comments

SUPERIOR WELL SERVICES  
785-628-6395  
THANK YOU FOR YOUR BUSINESS  
DIRECTIONS: GREAT BEND, E TO #156, N.E. TO RD. #20, 1/2E, S INTO.

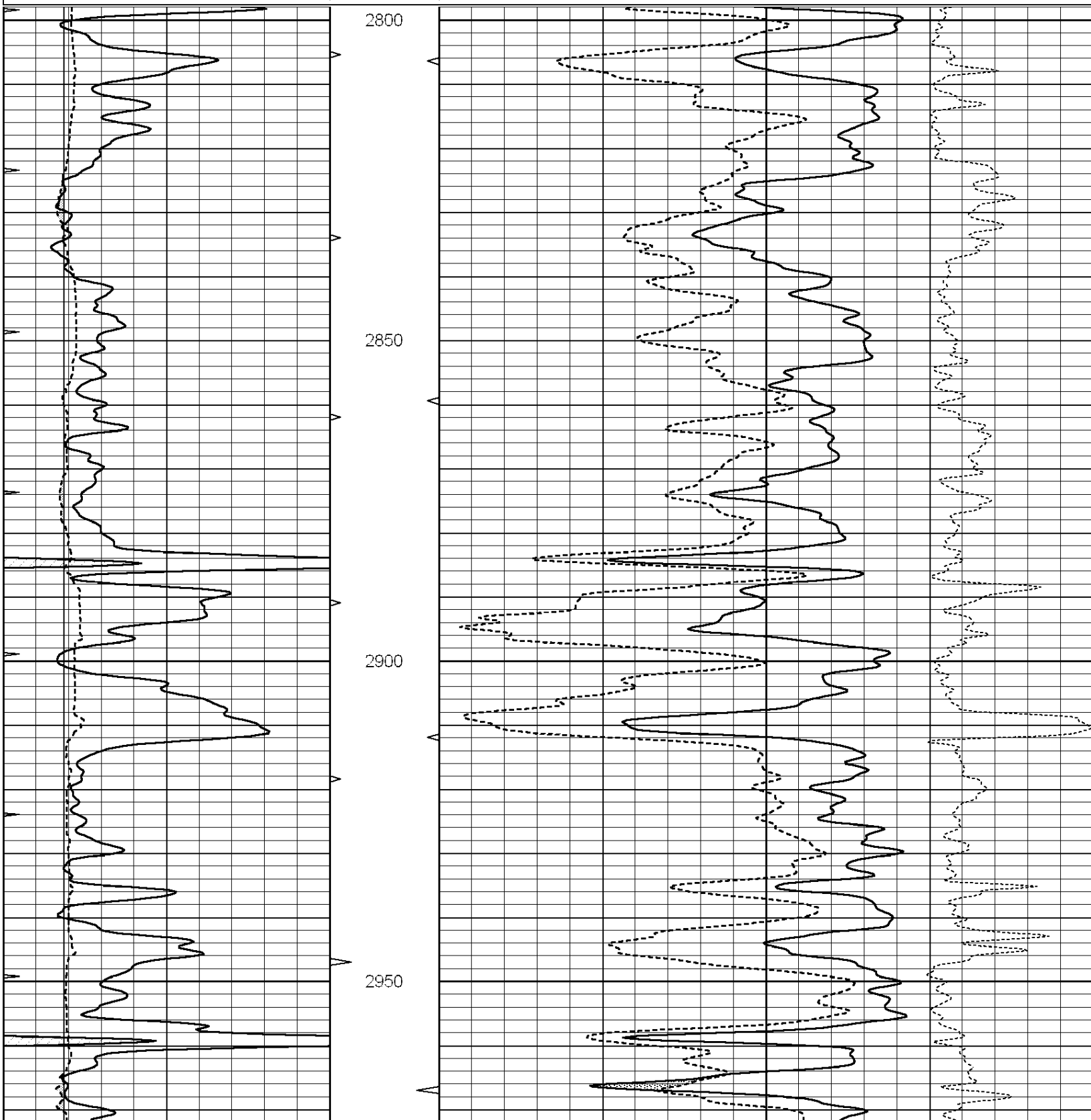


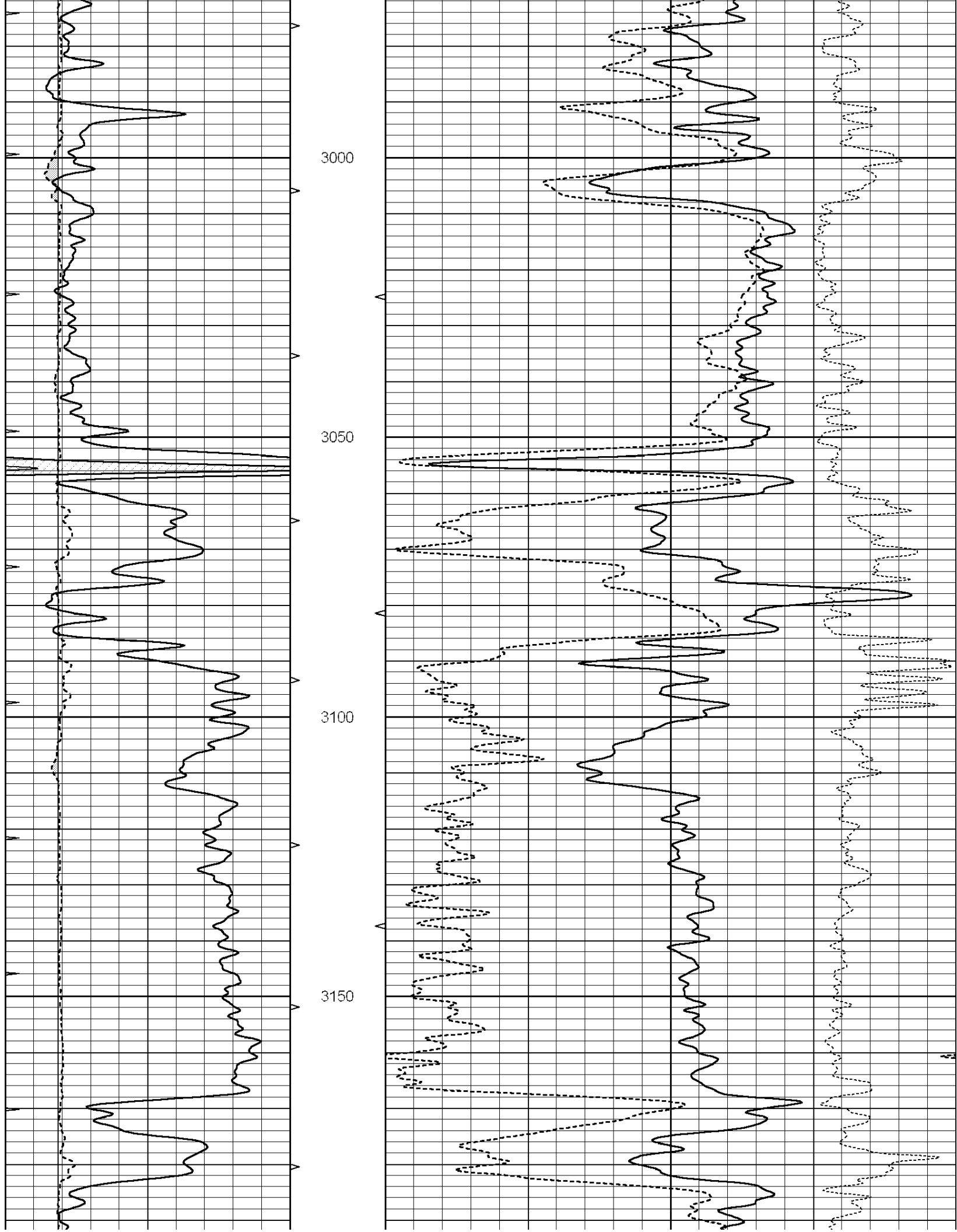
**SUPERIOR  
Hays,  
Kansas**

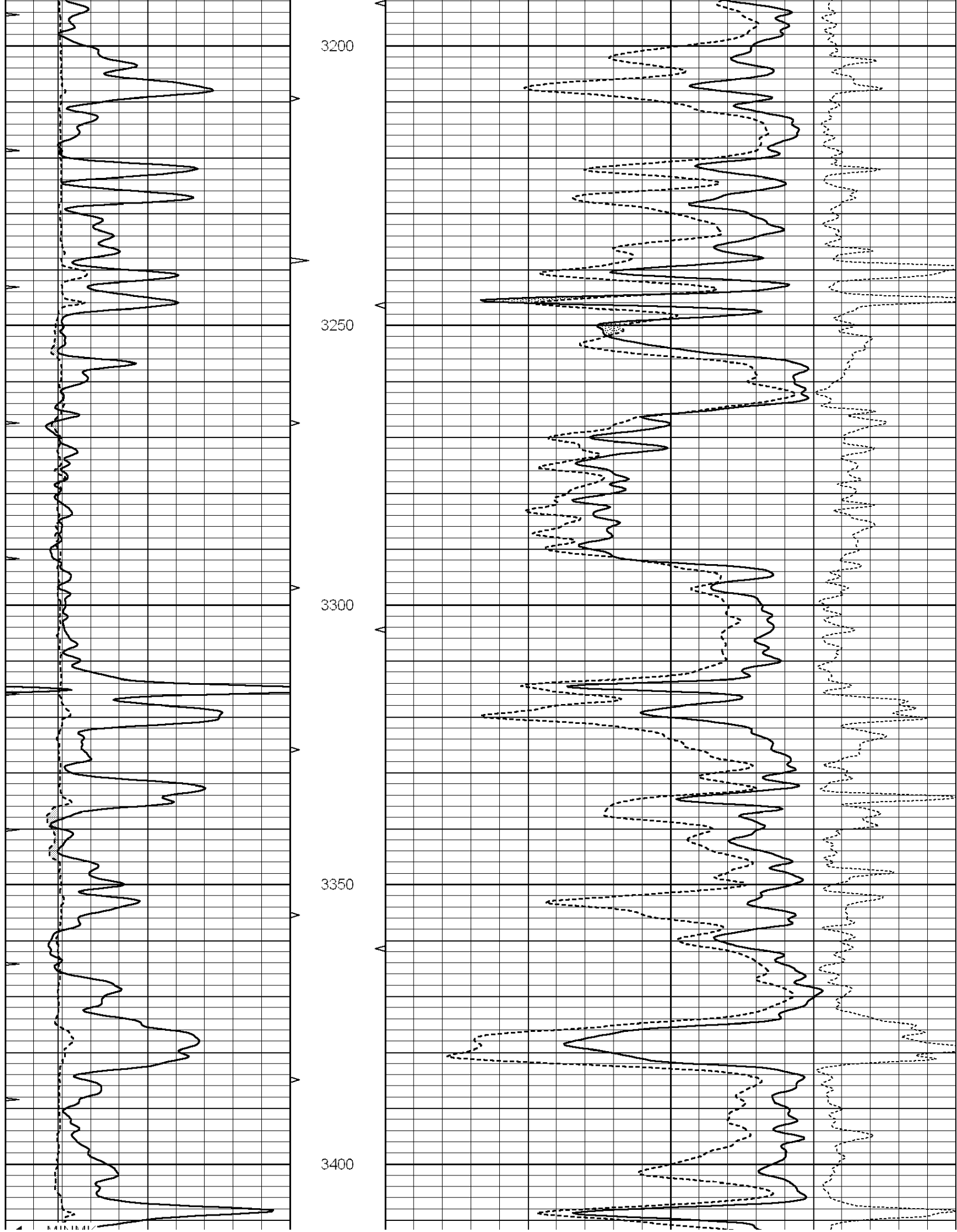
**MAIN SECTION**

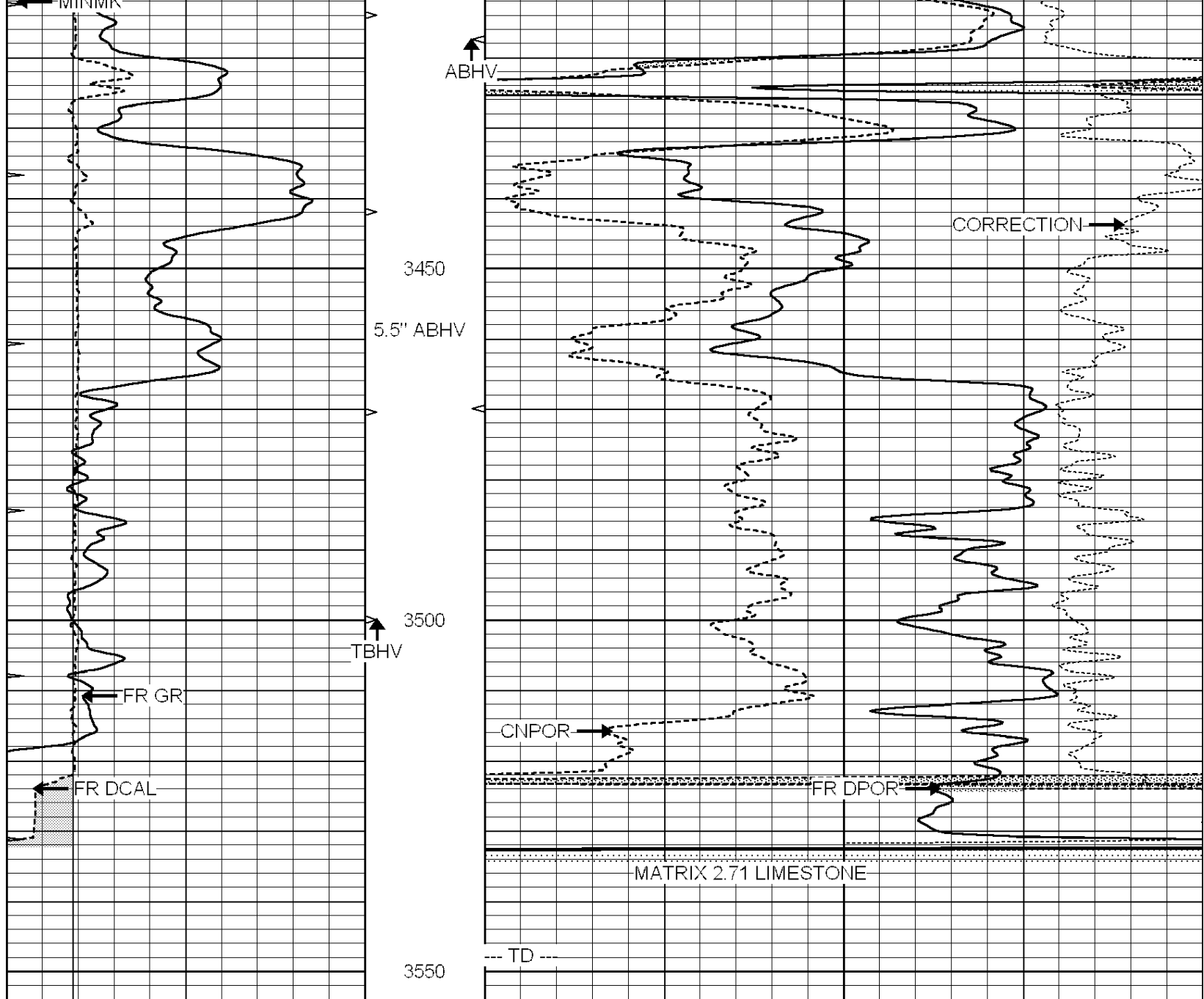
Database File: 005914ddn.db  
 Dataset Pathname: pass3.1  
 Presentation Format: den\_neu  
 Dataset Creation: Mon Nov 08 13:52:10 2010 by Calc Open-Cased 090629  
 Charted by: Depth in Feet scaled 1:240

0	GAMMA RAY (GAPI)	150	ABHV	30	COMPENSATED DENSITY (pu)	-10
6	CALIPER (in)	16	10 (ft3)	0 30	COMPENSATED NEUTRON (pu)	-10
0	MINMK	20	TBHV		-0.25 CORRECTION (g/cc)	0.25
			0 (ft3)	10		









0	GAMMA RAY (GAPI)	150	ABHV	30	COMPENSATED DENSITY (pu)	-10
6	CALIPER (in)	16	10 (ft3)	0 30	COMPENSATED NEUTRON (pu)	-10
0	MINMK	20	TBHV		-0.25 CORRECTION (g/cc)	0.25
			0 (ft3)	10		



SUPERIOR  
Hays,  
Kansas

# REPEAT SECTION

Database File: 005914ddn.db  
 Dataset Pathname: pass2  
 Presentation Format: den\_neu  
 Dataset Creation: Mon Nov 08 12:39:03 2010 by Log Open-Cased 090629  
 Charted by: Depth in Feet scaled 1:240

0	GAMMA RAY (GAPI)	150	ABHV	30	COMPENSATED DENSITY (pu)	-10
6	CALIPER (in)	16	10 (ft3)	0 30	COMPENSATED NEUTRON (pu)	-10

MINMK

20

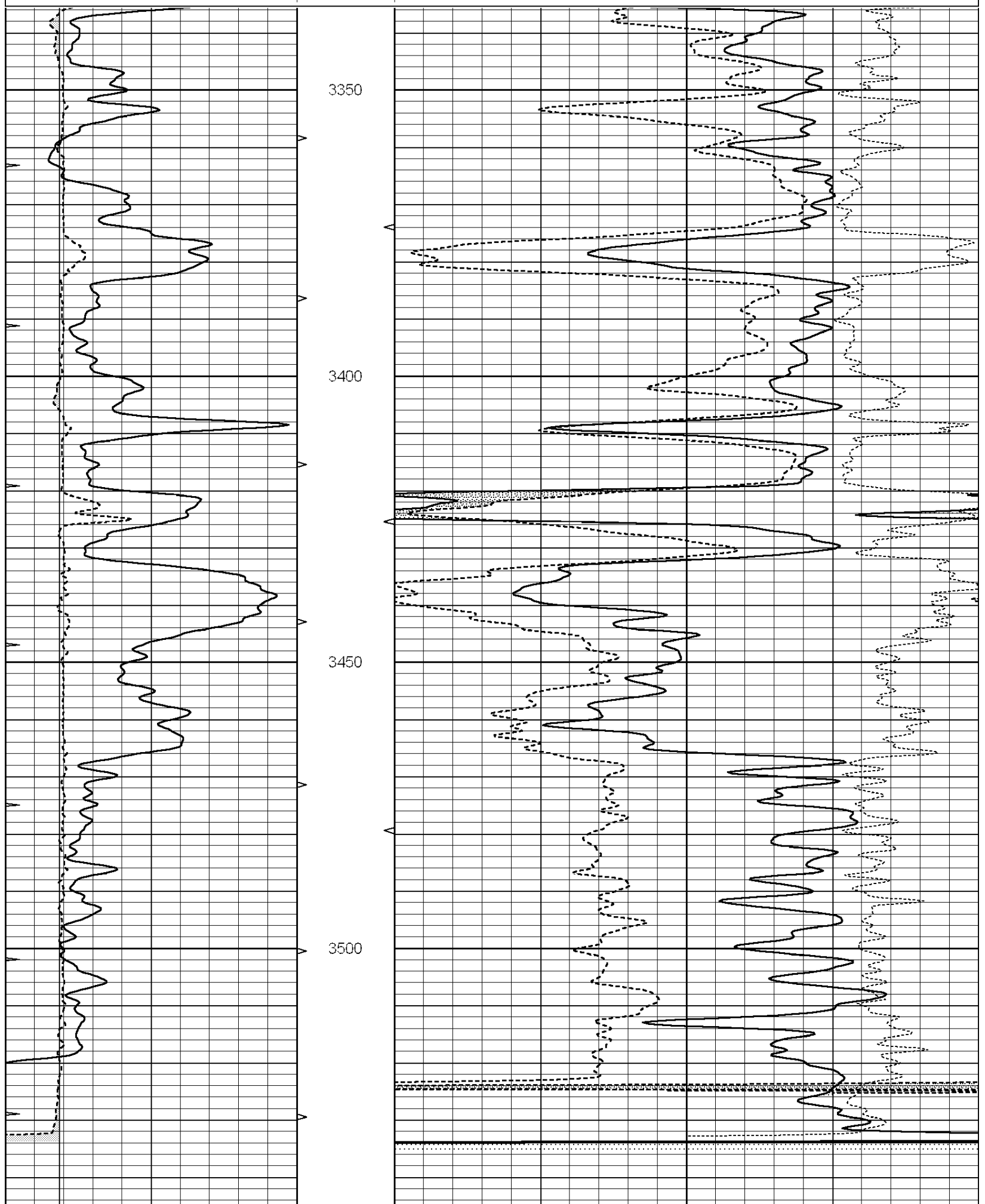
TBHV

-0.25

CORRECTION (g/cc)

0.25

0 (ft3) 10





Tool Model: OPEN  
Performed: Mon Nov 08 12:08:10 2010

Calibrator Value: 1.0 GAPI

Background Reading: 0.0 cps

Calibrator Reading: 1.0 cps

Sensitivity: 0.6500 GAPI/cps