



**SUPERIOR
Hays,
Kansas**

**SONIC
LOG**

Company **SHELBY, LLC.**
Well **MILLER #1-16**
Field **JAMES**
County **BARTON** State **KANSAS**

Company **SHELBY, LLC.**
Well **MILLER #1-16**
Field **JAMES**
County **BARTON**
State **KANSAS**

Location: **API # : 15-009-25487**
1265' FSL & 1894' FEL
SEC 16 TWP 19S RGE 12W
Permanent Datum **GROUND LEVEL** Elevation **1861**
Log Measured From **KELLY BUSHING 12' A.G.L.**
Drilling Measured From **KELLY BUSHING**
Other Services
CDL/CNL
DIL/MEL
Elevation
K.B. 1883
D.F.
G.L. 1861

Date	11-8-10
Run Number	TW0
Depth Driller	3550
Depth Logger	3548
Bottom Logged Interval	3540
Top Log Interval	718
Casing Driller	738
Casing Logger	738
Bit Size	7.875
Type Fluid in Hole	CHEMICAL MUD
Density / Viscosity	9.1 / 48
pH / Fluid Loss	10.0 / 8.0
Source of Sample	FLOWLINE
Rm @ Meas. Temp	0.55 @ 2 73F
Rmf @ Meas. Temp	0.41 @ 73F
Rmc @ Meas. Temp	0.66 @ 73F
Source of Rmf / Rmc	MEASURED
Rm @ BHT	.370 @ 108F
Time Circulation Stopped	2 HOURS
Time Logger on Bottom	11:50 A.M.
Maximum Recorded Temperature	108F
Equipment Number	860
Location	HAYS, KS.
Recorded By	RUPP
Witnessed By	KEITH REAVIS

<<< Fold Here >>>

All interpretations are opinions based on inferences from electrical or other measurements and we cannot and do not guarantee the accuracy or correctness of any interpretation, and we shall not, except in the case of gross or willful negligence on our part, be liable or responsible for any loss, costs, damages, or expenses incurred or sustained by anyone resulting from any interpretation made by any of our officers, agents or employees. These interpretations are also subject to our general terms and conditions set out in our current Price Schedule.

Comments

SUPERIOR WELL SERVICES
785-628-6395
THANK YOU FOR YOUR BUSINESS
DIRECTIONS: GREAT BEND, E TO #156, N.E. TO RD. #20, 1/2E, S INTO.



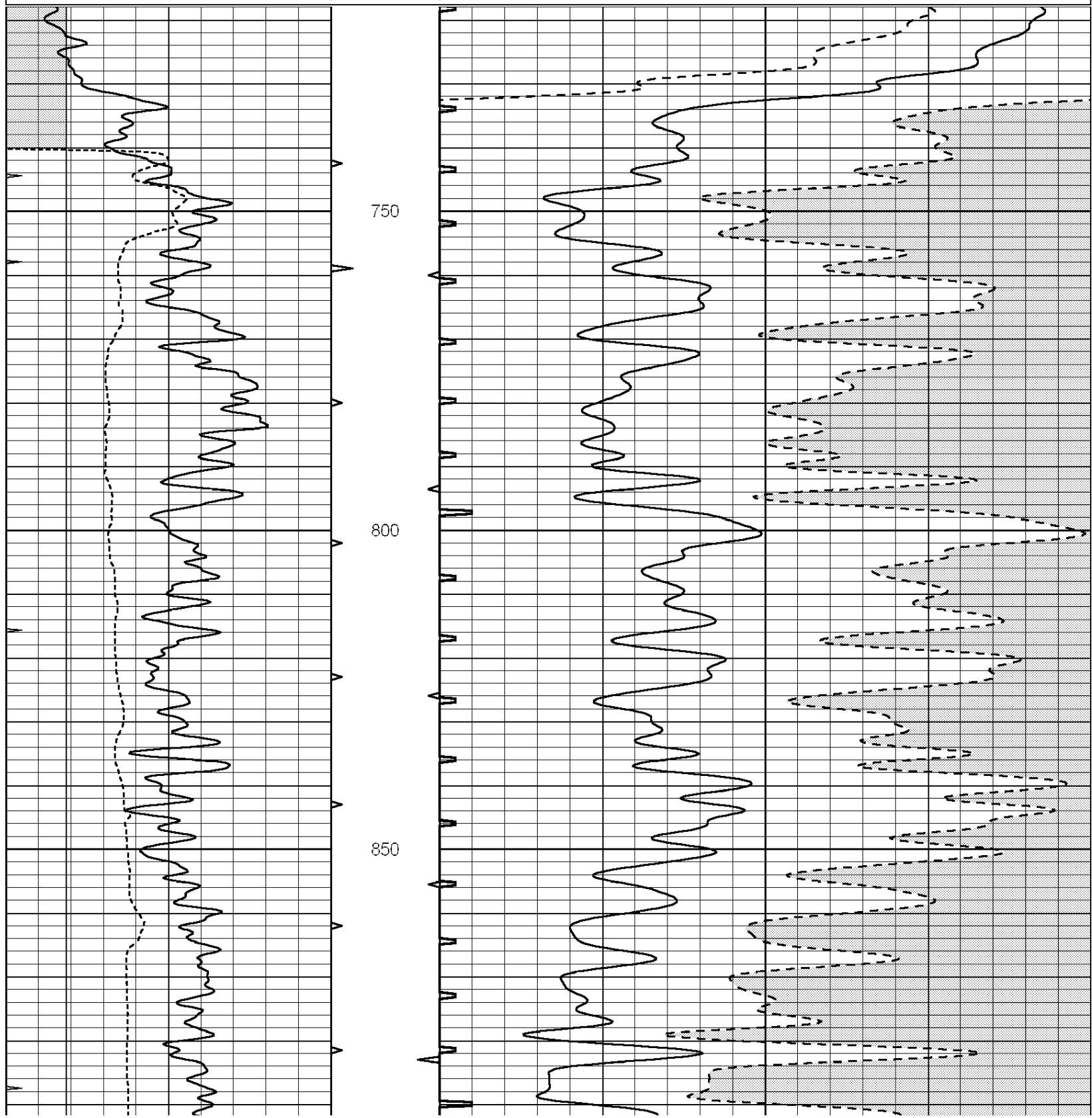
**SUPERIOR
Hays,
Kansas**

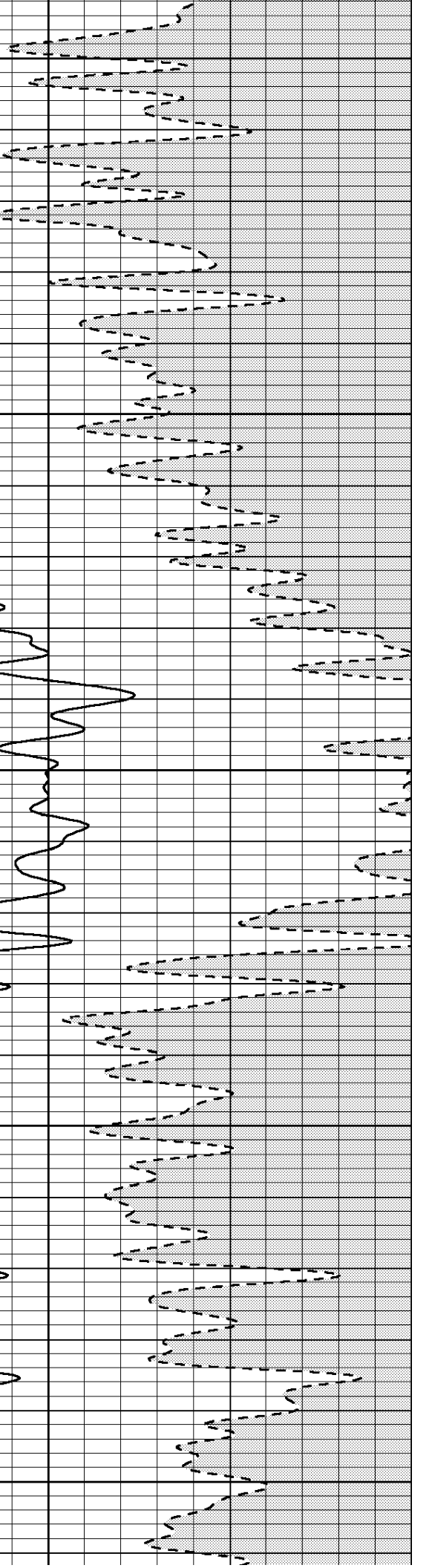
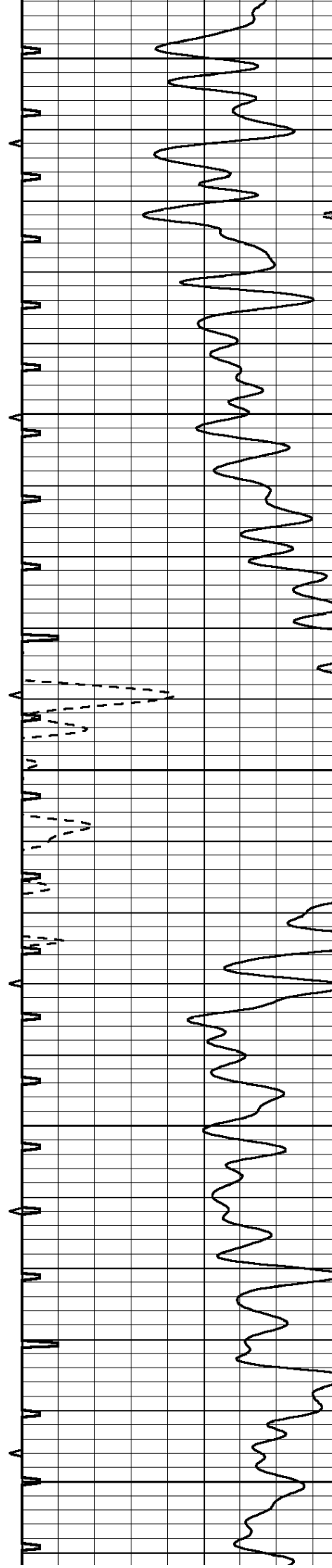
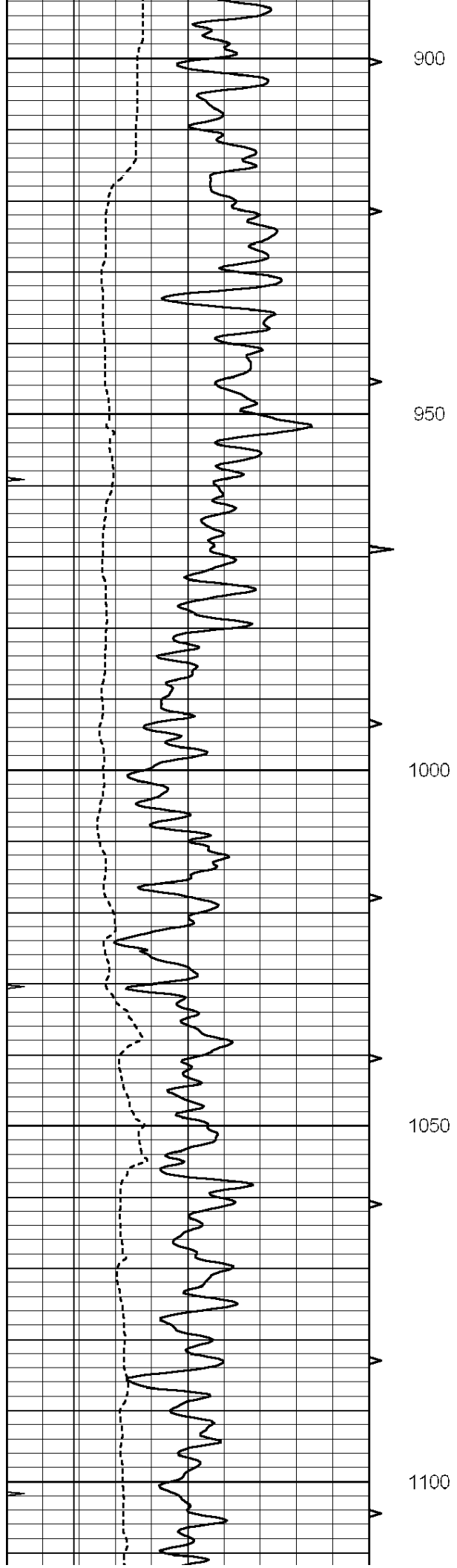
MAIN SECTION

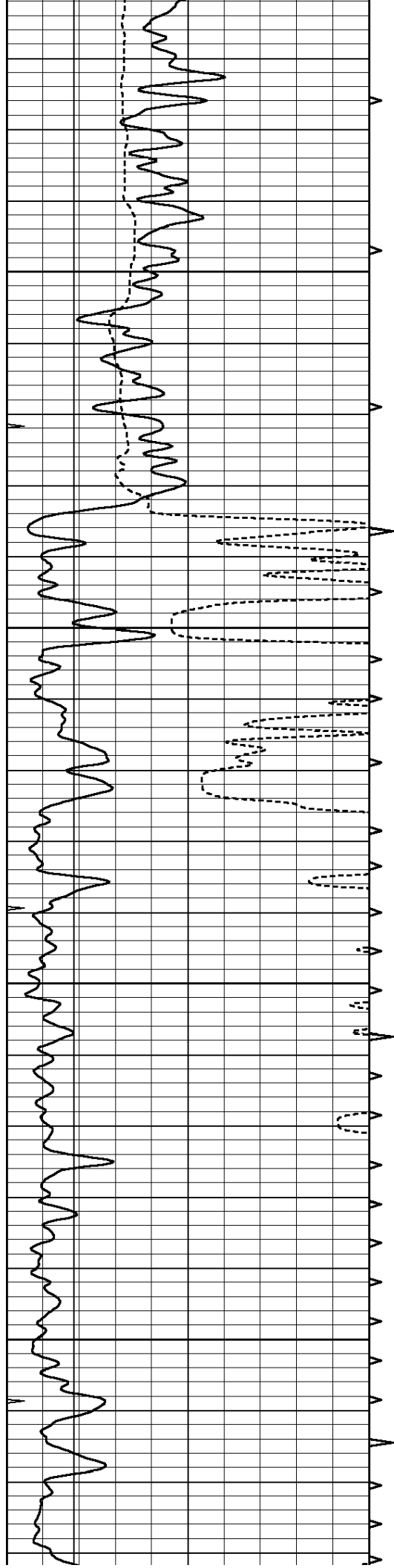


Database File: 005914ddn.db
 Dataset Pathname: pass5
 Presentation Format: slt
 Dataset Creation: Mon Nov 08 14:40:25 2010 by Log Open-Cased 090629
 Charted by: Depth in Feet scaled 1:240

0	GAMMA RAY (GAPI)	150	ABHV	140	DELTA TIME (usec/ft)	40
6	CALIPER (in)	16	10 (ft3)	0 30	SONIC POROSITY (pu)	-10
0	MINMK	20	TBHV	0	ITT (msec)	20
			0 (ft3)	10		





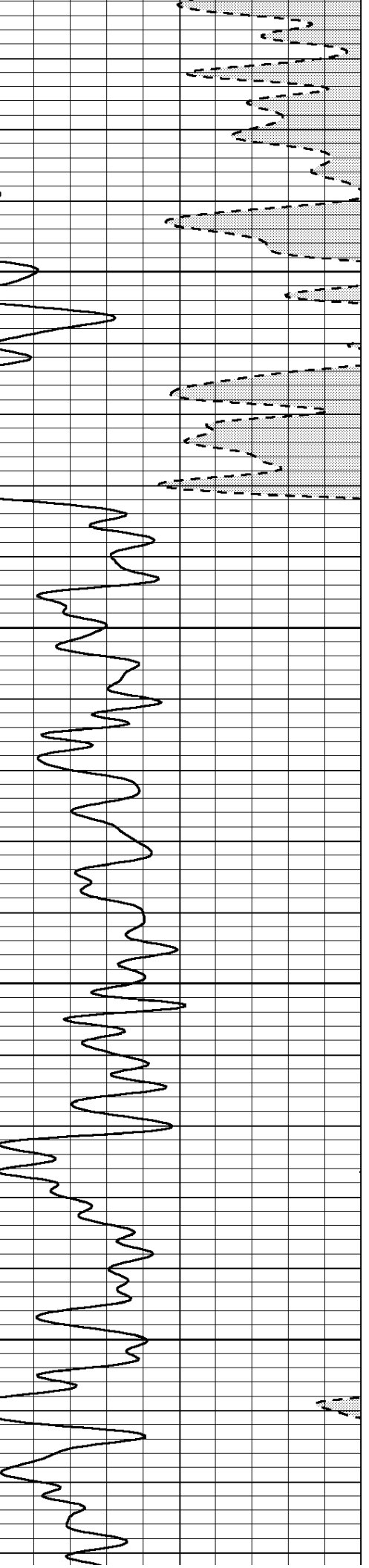
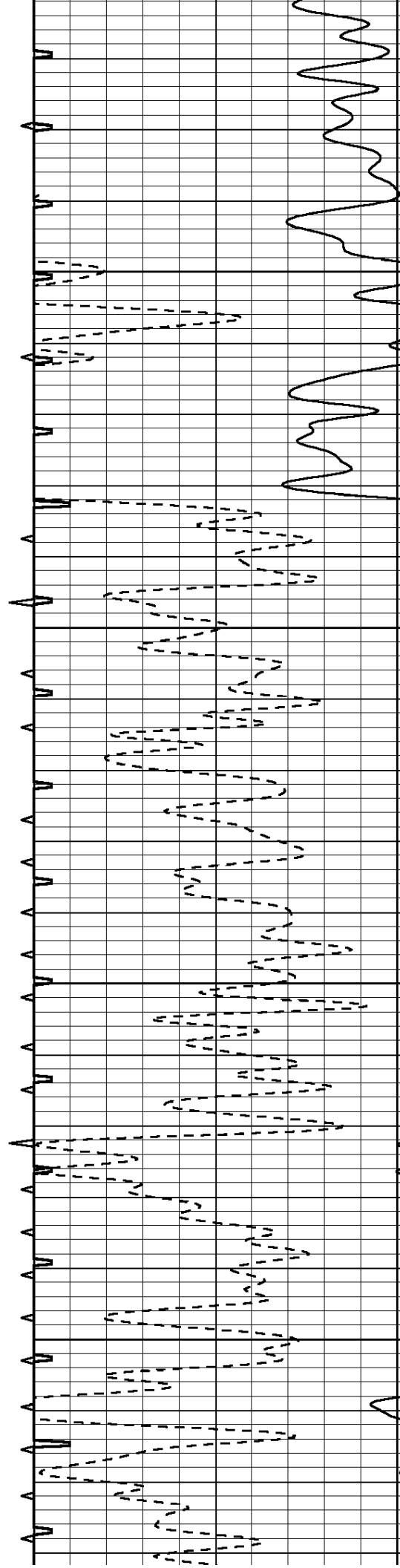


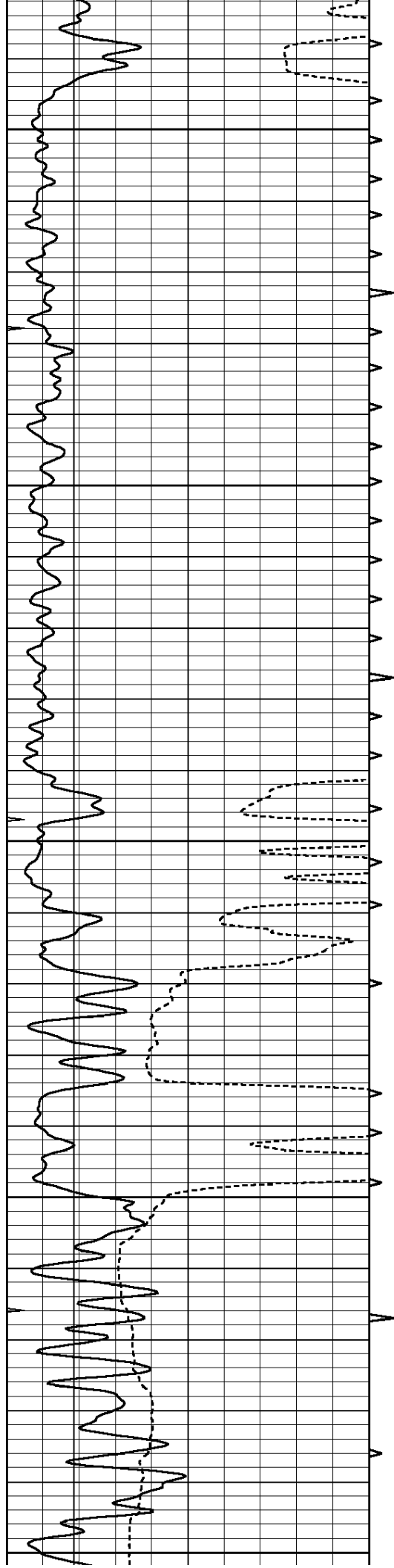
1150

1200

1250

1300





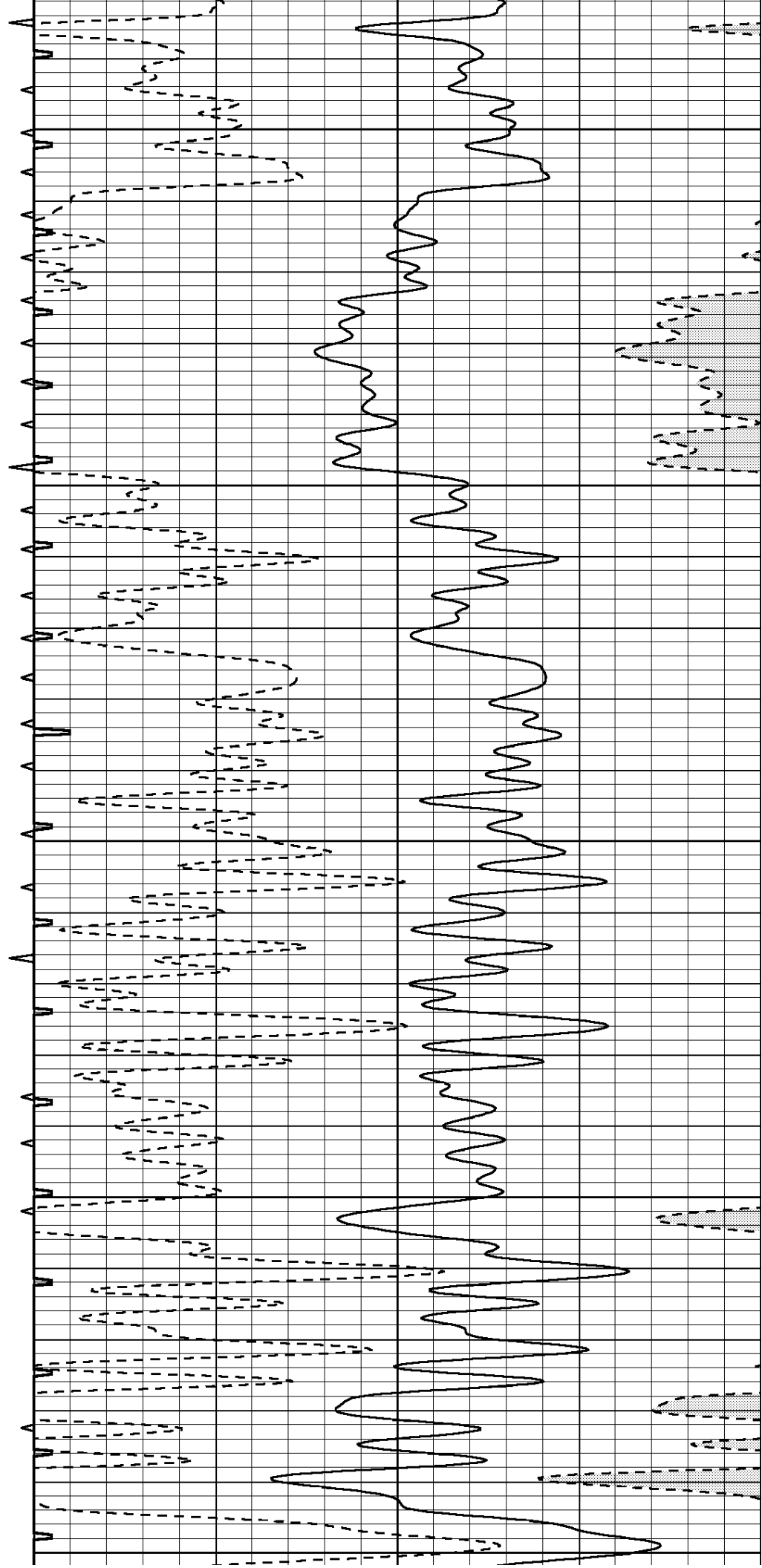
1350

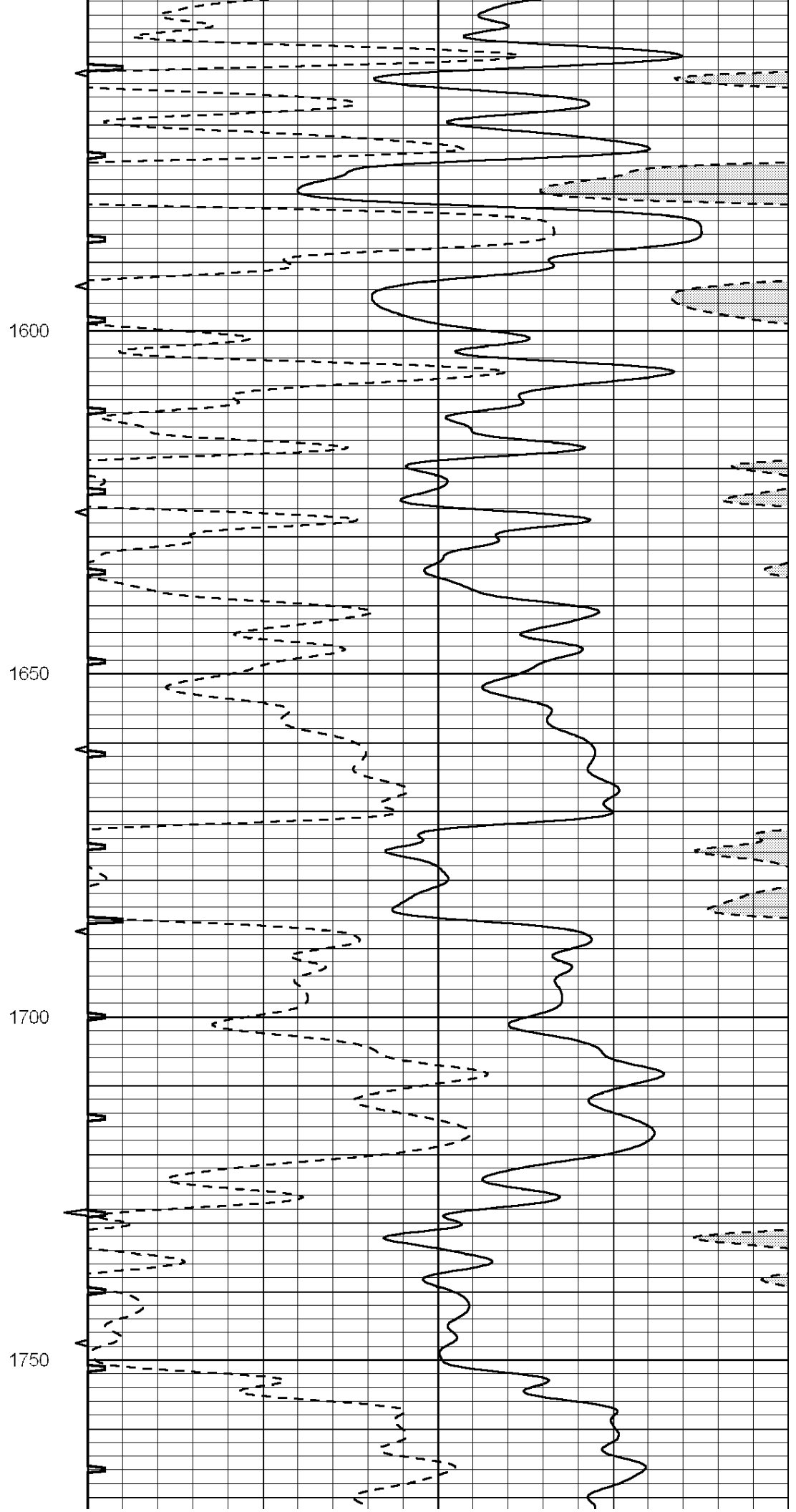
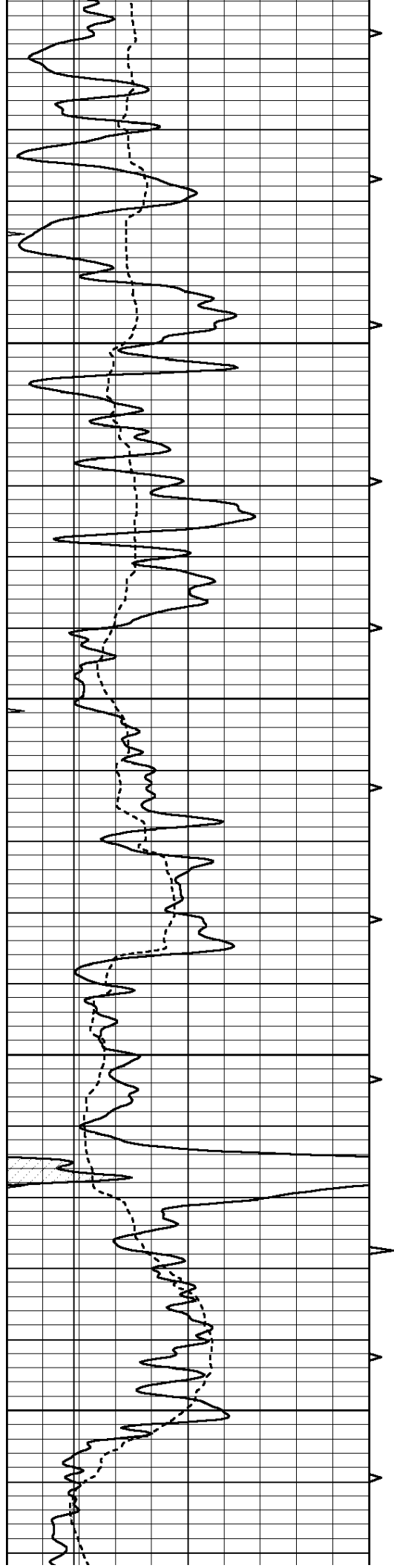
1400

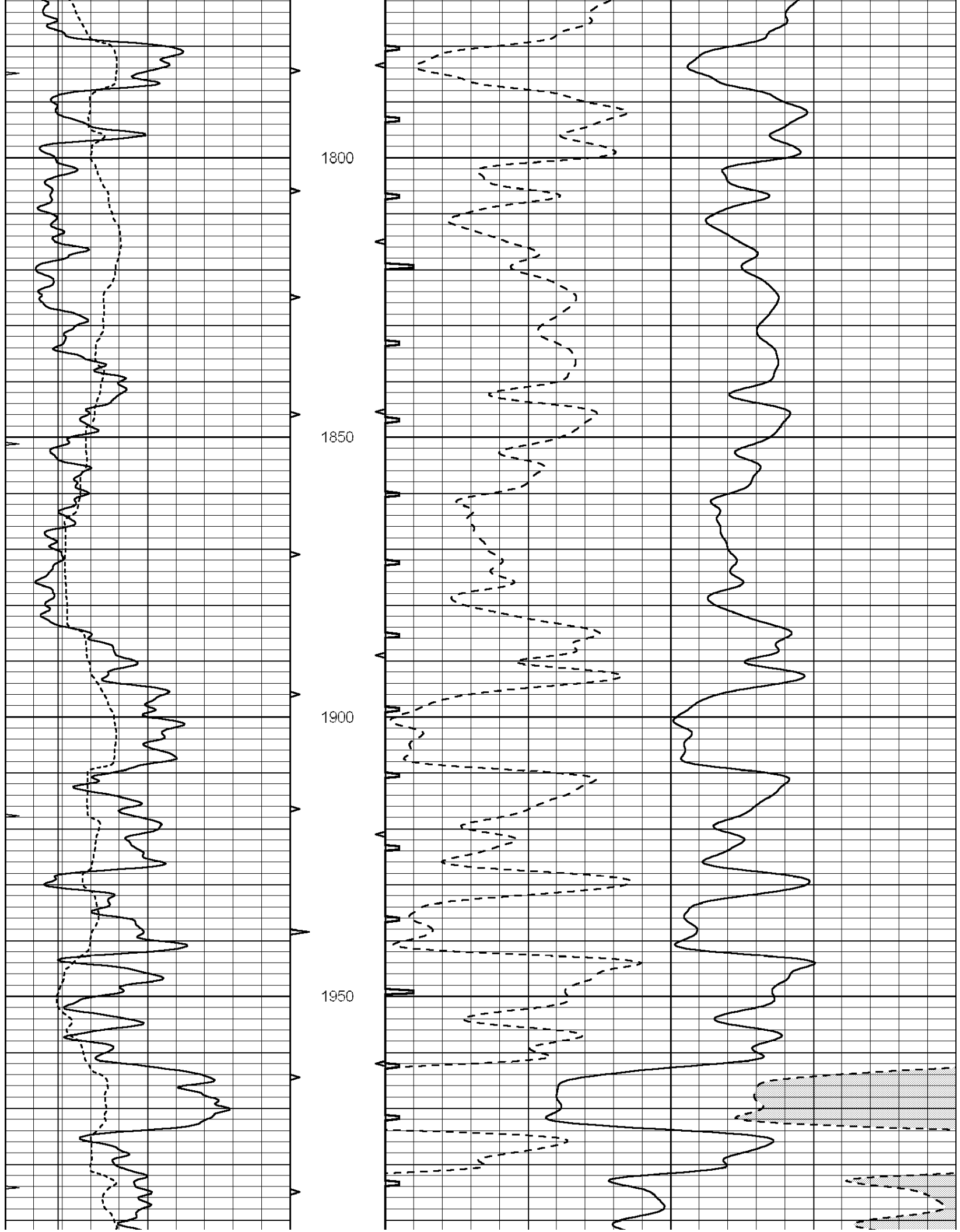
1450

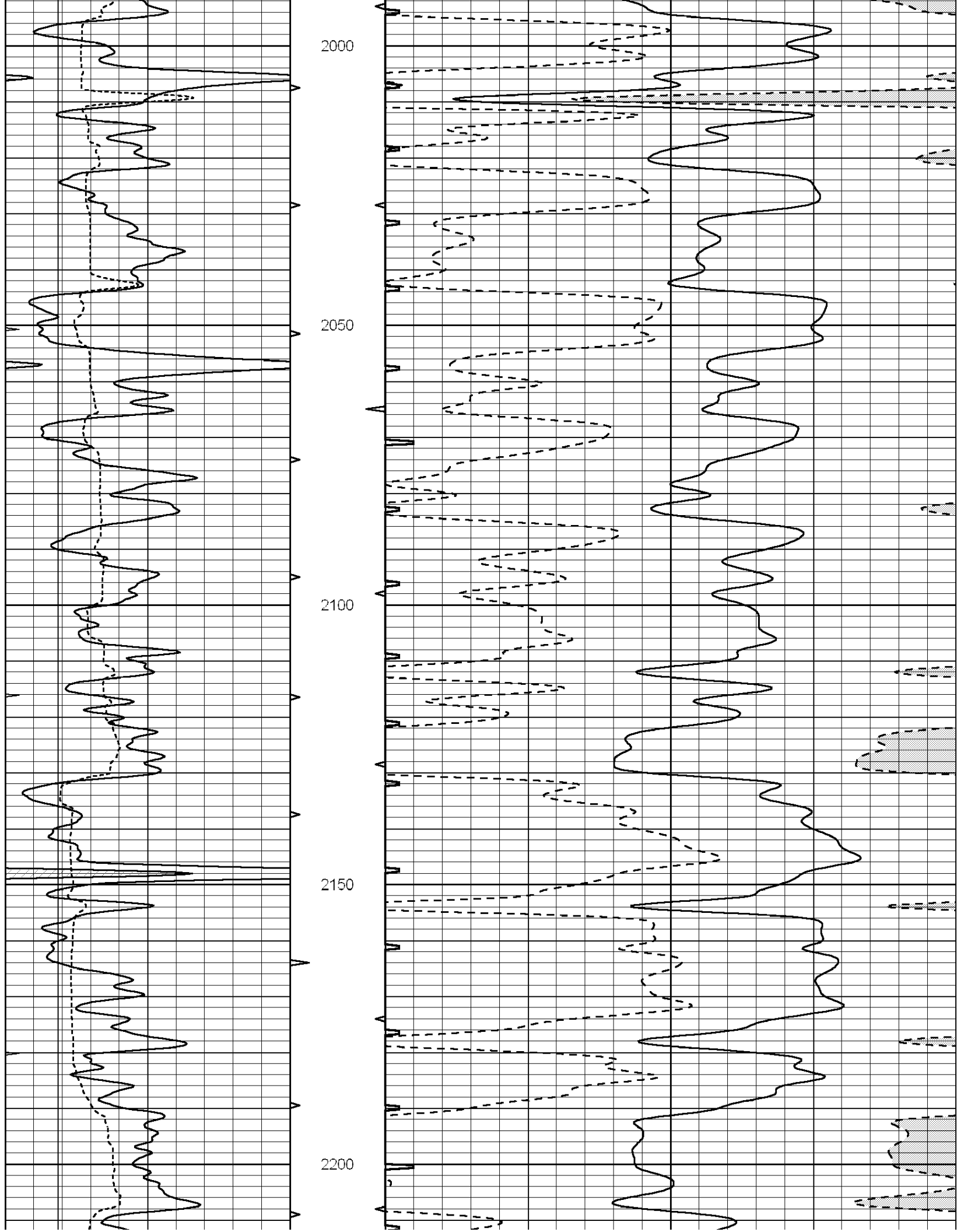
1500

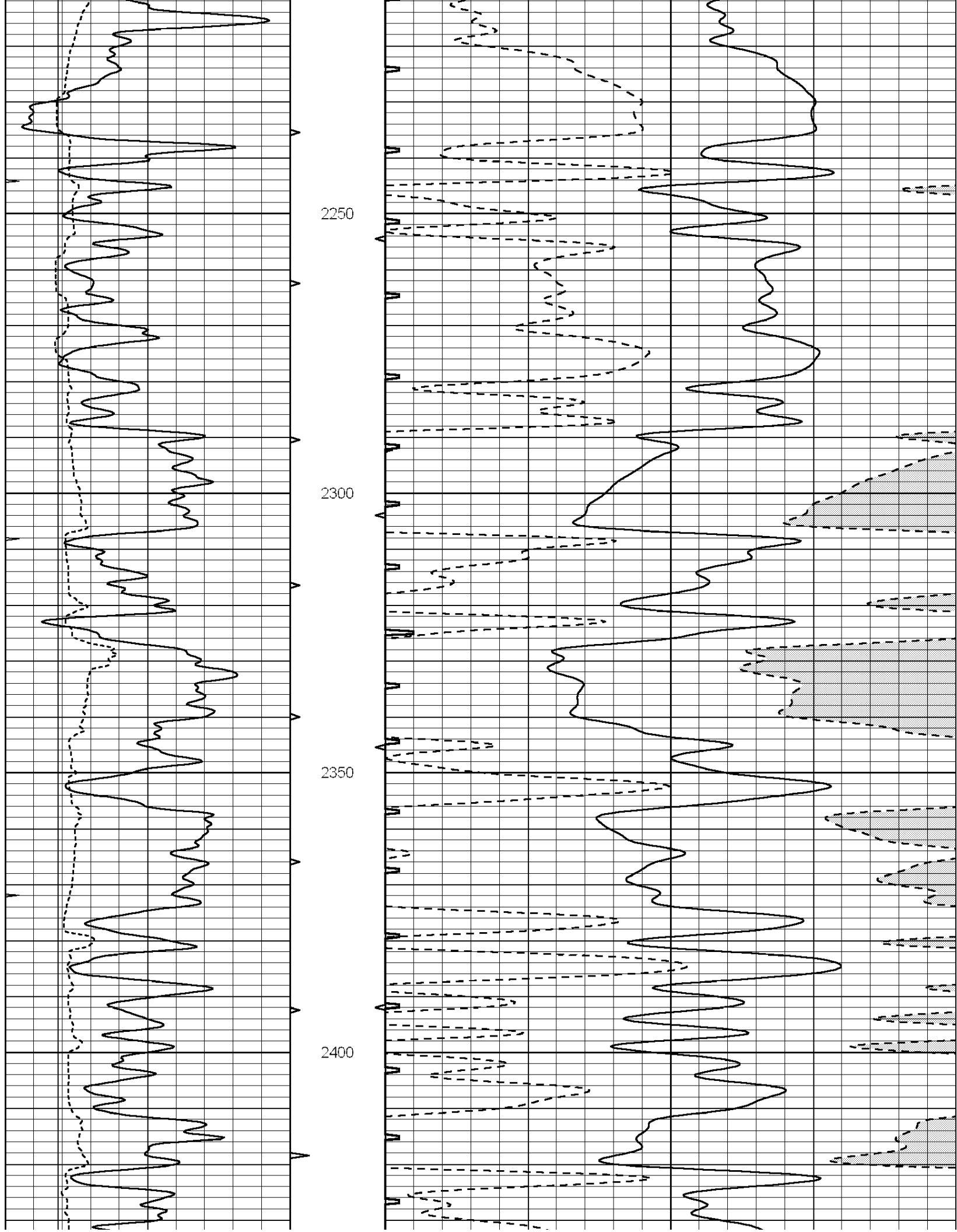
1550

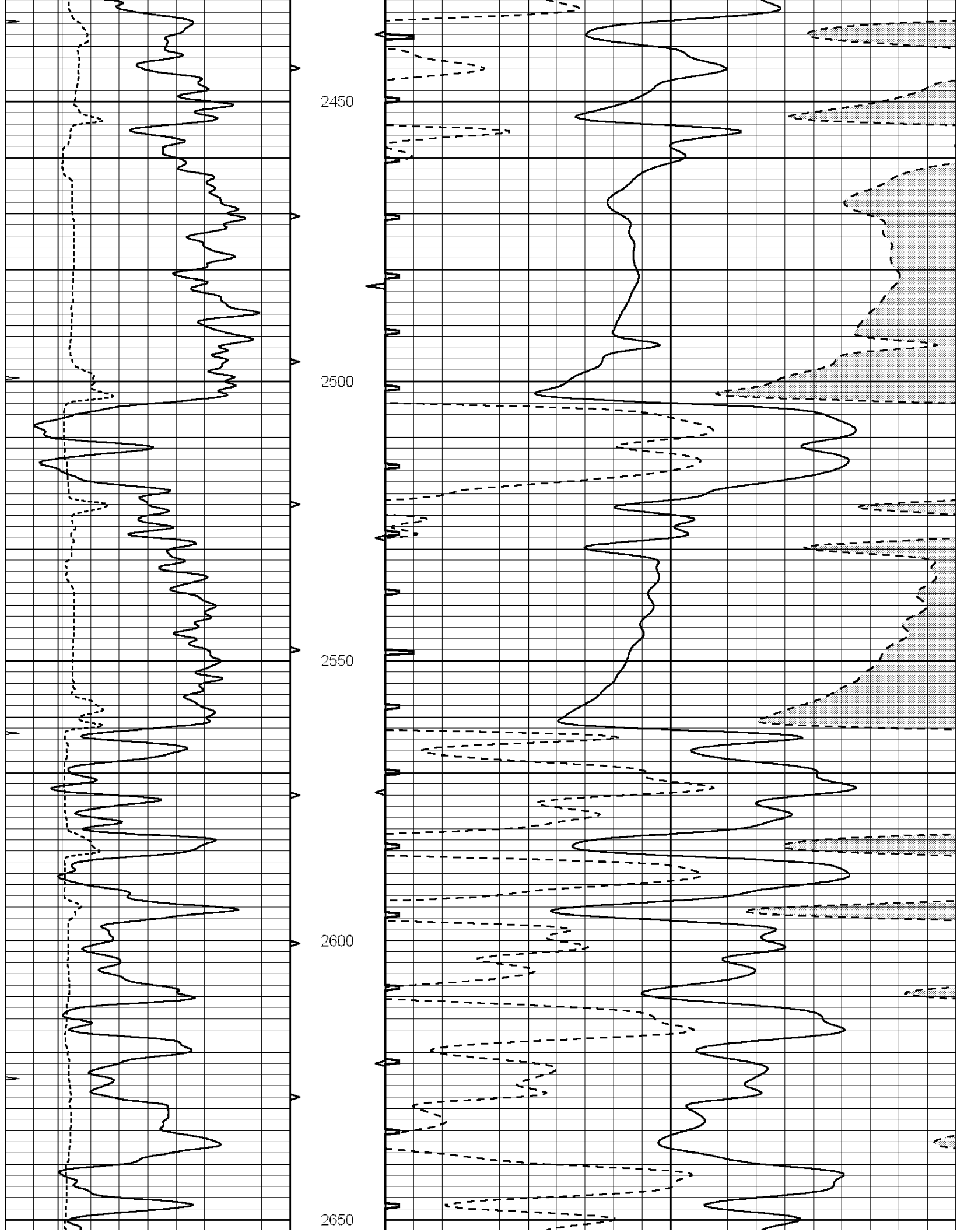


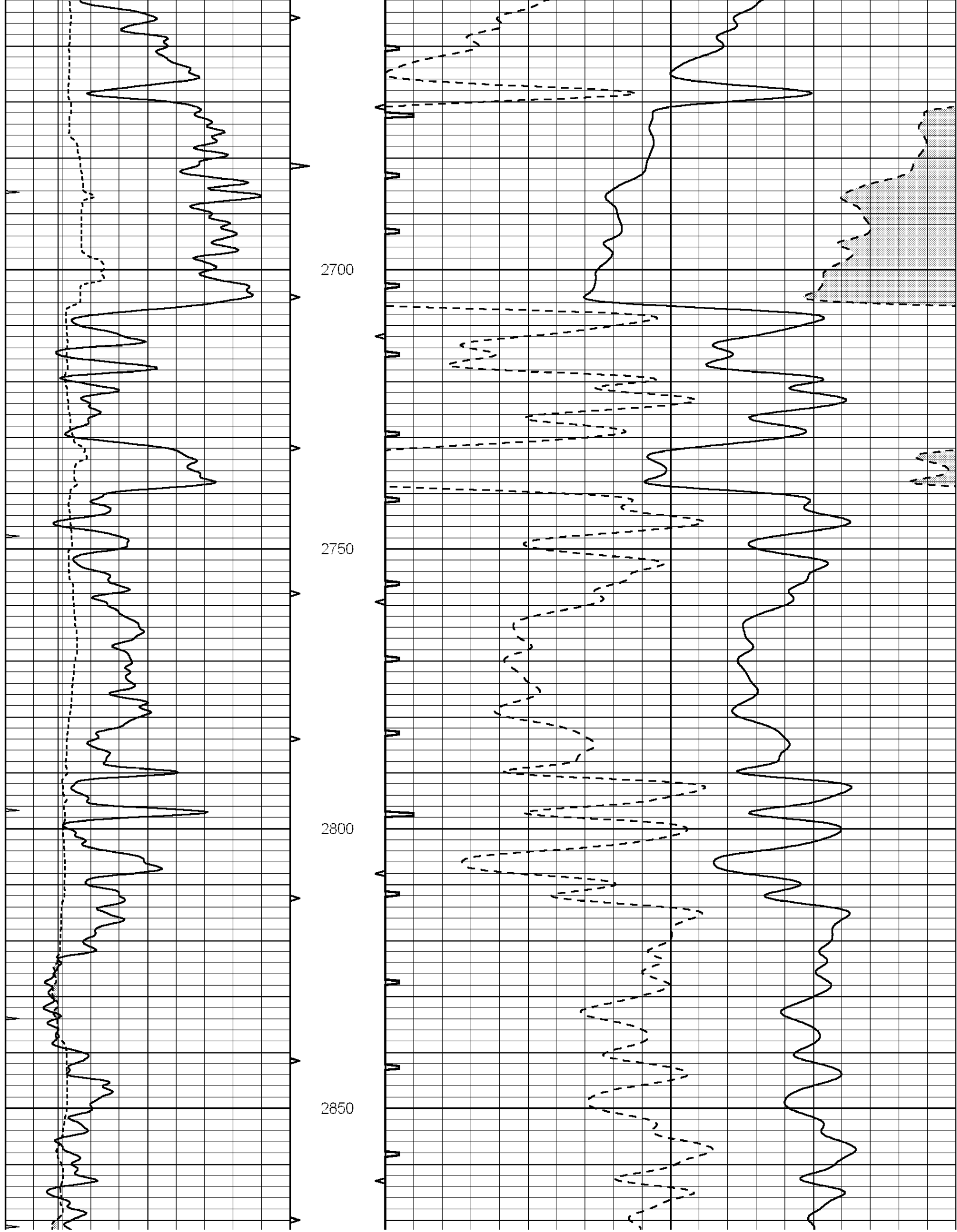


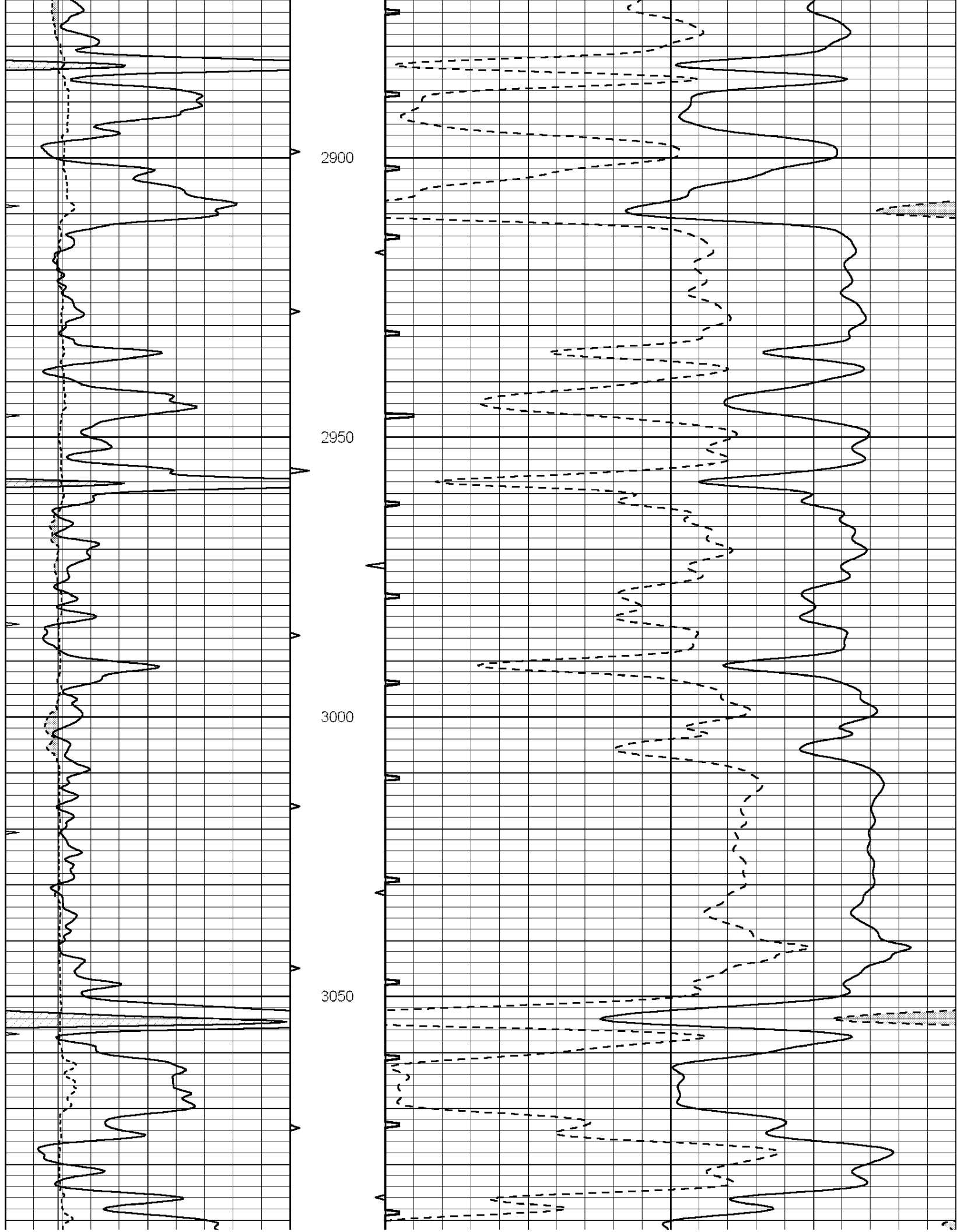


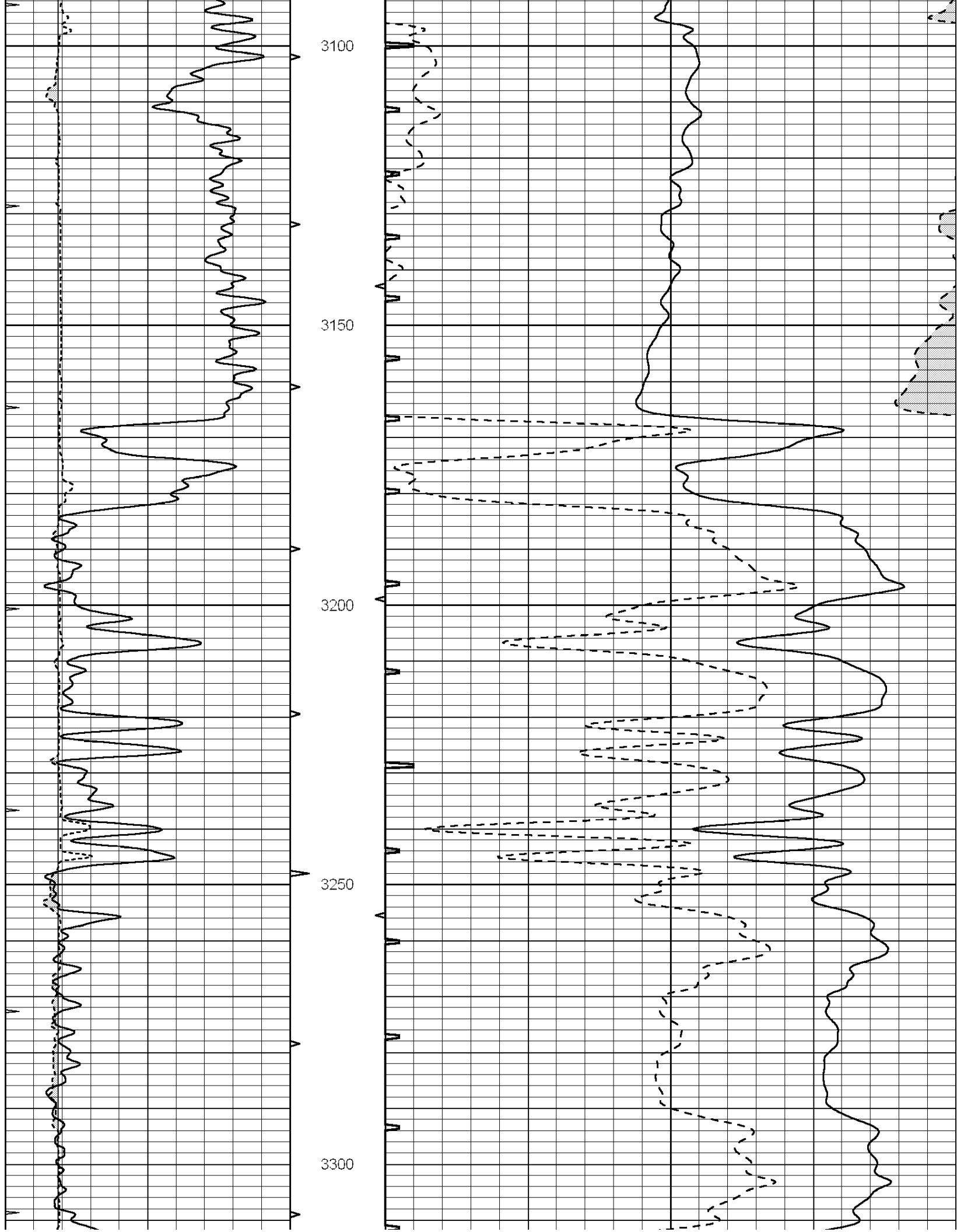


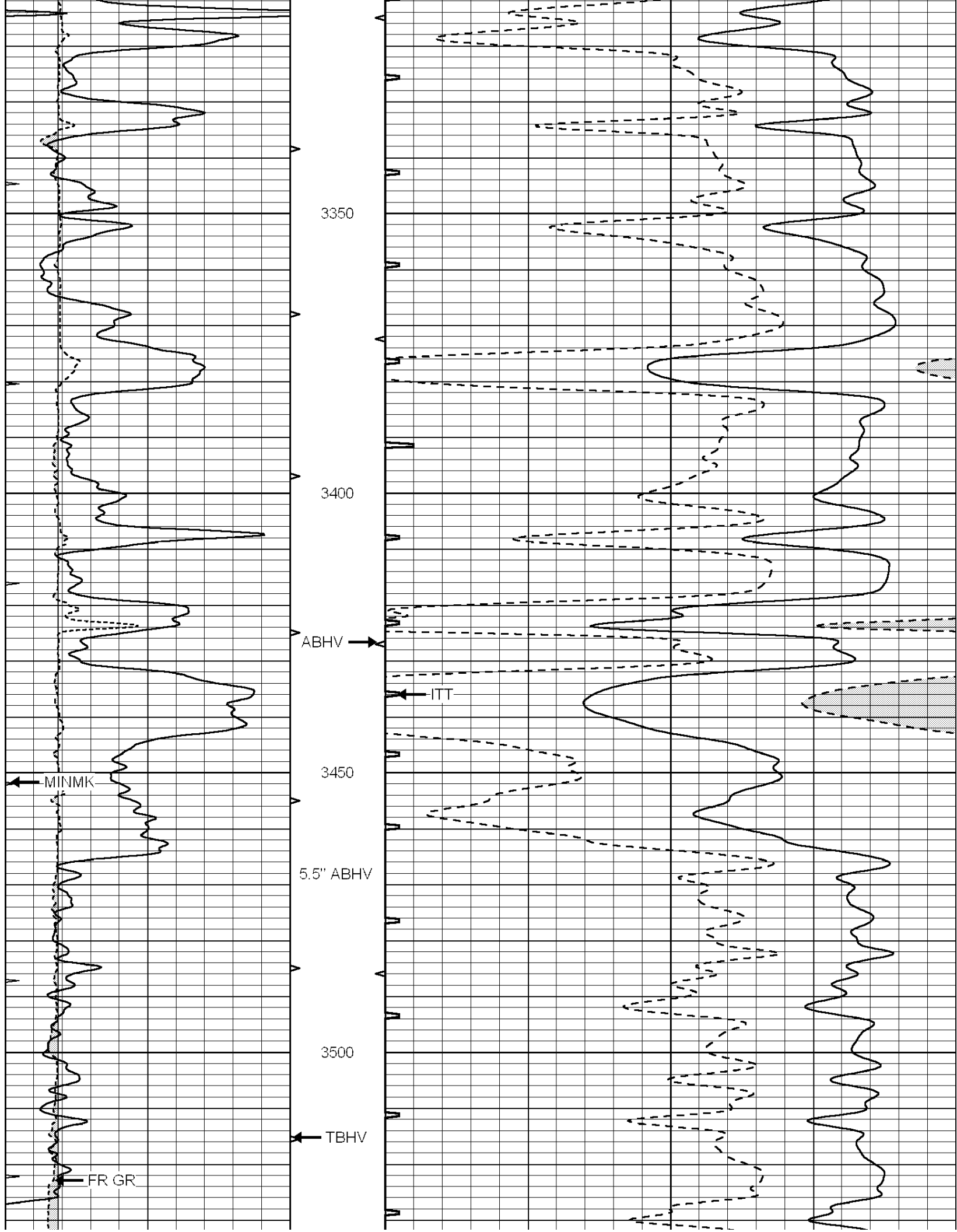


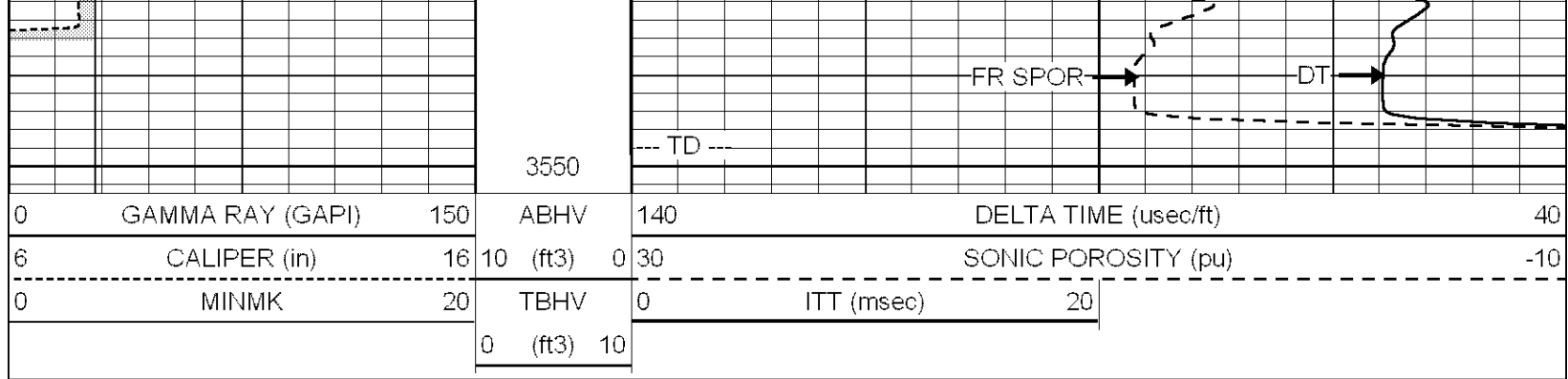




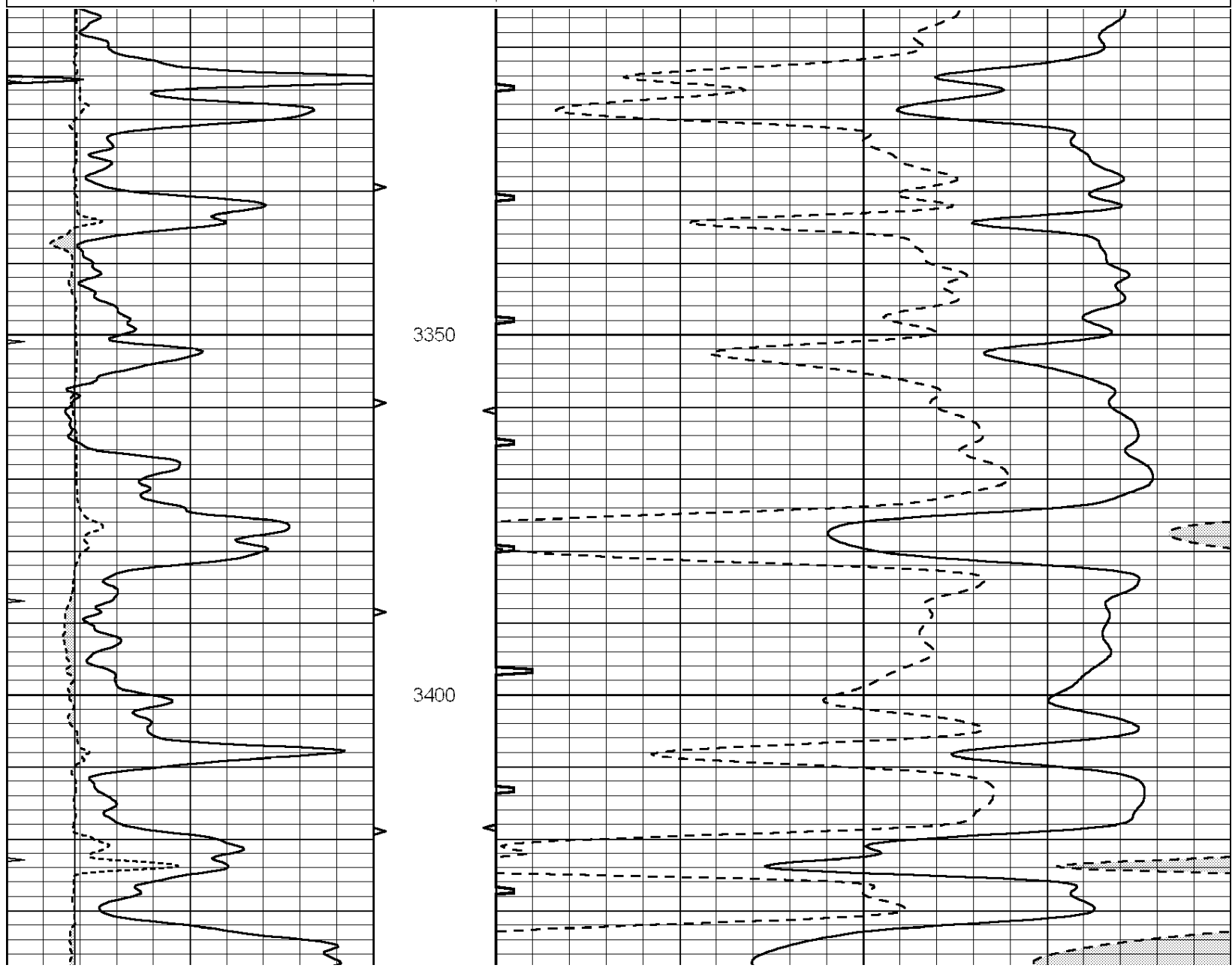
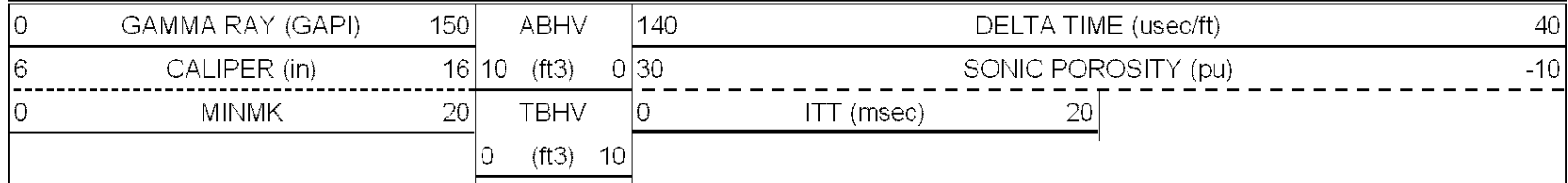


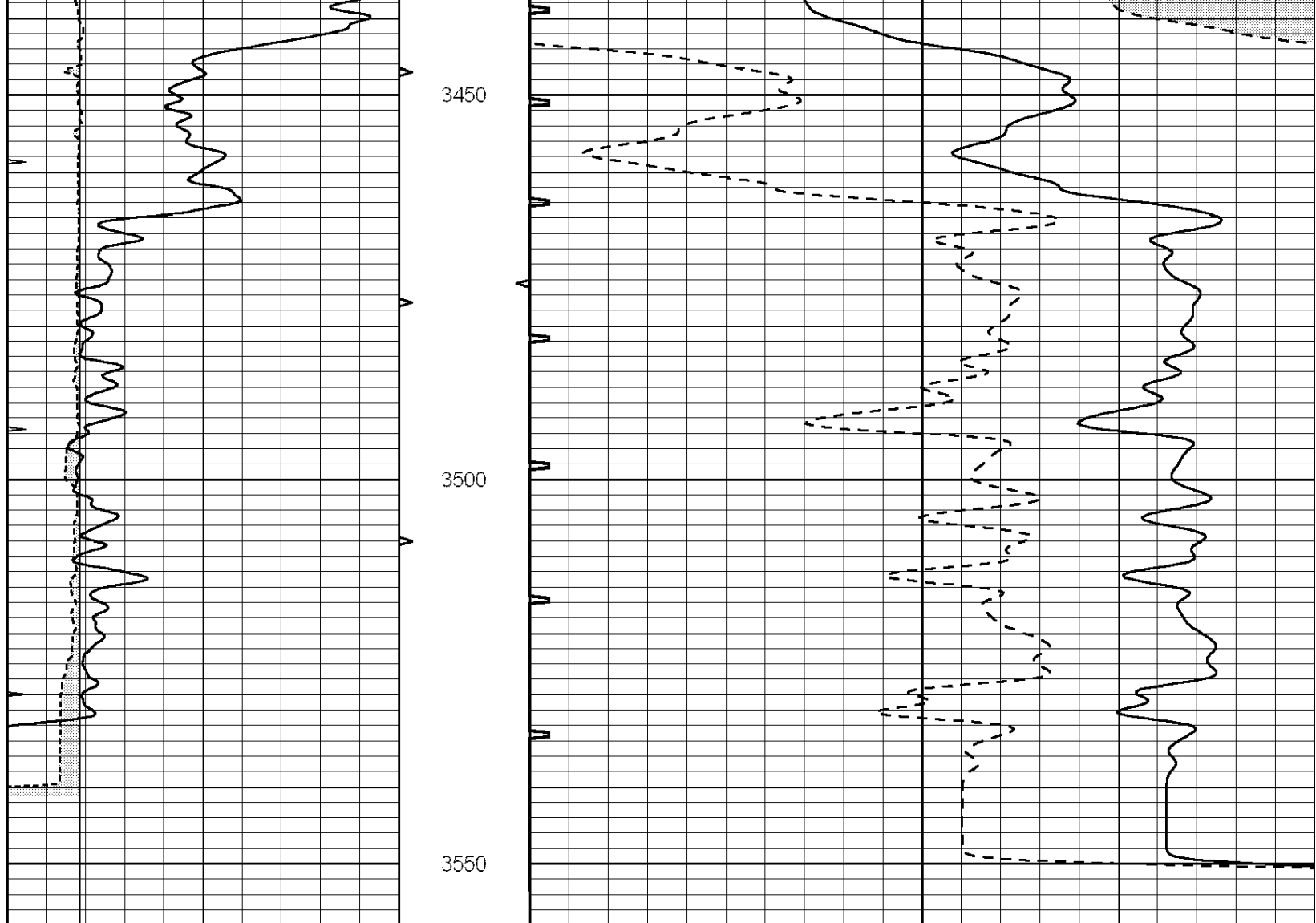






Database File: 005914ddn.db
 Dataset Pathname: pass4
 Presentation Format: slt
 Dataset Creation: Mon Nov 08 14:30:00 2010 by Log Open-Cased 090629
 Charted by: Depth in Feet scaled 1:240





0	GAMMA RAY (GAPI)	150	ABHV	140	DELTA TIME (usec/ft)	40
6	CALIPER (in)	16	10 (ft3)	0 30	SONIC POROSITY (pu)	-10
0	MINMK	20	TBHV	0	ITT (msec)	20
			0 (ft3)	10		