



**SUPERIOR
Hays,
Kansas**

**MICRO
LOG**

Company **SHELBY, LLC.**
Well **MILLER #1-16**
Field **JAMES**
County **BARTON** State **KANSAS**

Company **SHELBY, LLC.**
Well **MILLER #1-16**
Field **JAMES**
County **BARTON**
State **KANSAS**

Location: **API # : 15-009-25487**
1265' FSL & 1894' FEL
SEC 16 TWP 19S RGE 12W
Permanent Datum **GROUND LEVEL** Elevation **1861**
Log Measured From **KELLY BUSHING 12' A.G.L.**
Drilling Measured From **KELLY BUSHING**
Other Services
CDL/CNL
DIL/SONIC
Elevation
K.B. 1883
D.F.
G.L. 1861

Date	11-8-10
Run Number	TWO
Depth Driller	3550
Depth Logger	3548
Bottom Logged Interval	3528
Top Log Interval	2800
Casing Driller	738
Casing Logger	738
Bit Size	7.875
Type Fluid in Hole	CHEMICAL MUD
Density / Viscosity	9.1 / 48
pH / Fluid Loss	10.0 / 8.0
Source of Sample	FLOWLINE
Rm @ Meas. Temp	0.55 @ 2 73F
Rmf @ Meas. Temp	0.41 @ 73F
Rmc @ Meas. Temp	0.66 @ 73F
Source of Rmf / Rmc	MEASURED
Rm @ BHT	.370 @ 108F
Time Circulation Stopped	2 HOURS
Time Logger on Bottom	11:50 A.M.
Maximum Recorded Temperature	108F
Equipment Number	860
Location	HAYS, KS.
Recorded By	RUPP
Witnessed By	KEITH REAVIS

<<< Fold Here >>>

All interpretations are opinions based on inferences from electrical or other measurements and we cannot and do not guarantee the accuracy or correctness of any interpretation, and we shall not, except in the case of gross or willful negligence on our part, be liable or responsible for any loss, costs, damages, or expenses incurred or sustained by anyone resulting from any interpretation made by any of our officers, agents or employees. These interpretations are also subject to our general terms and conditions set out in our current Price Schedule.

Comments

SUPERIOR WELL SERVICES
785-628-6395
THANK YOU FOR YOUR BUSINESS
DIRECTIONS: GREAT BEND, E TO #156, N.E. TO RD. #20, 1/2E, S INTO.

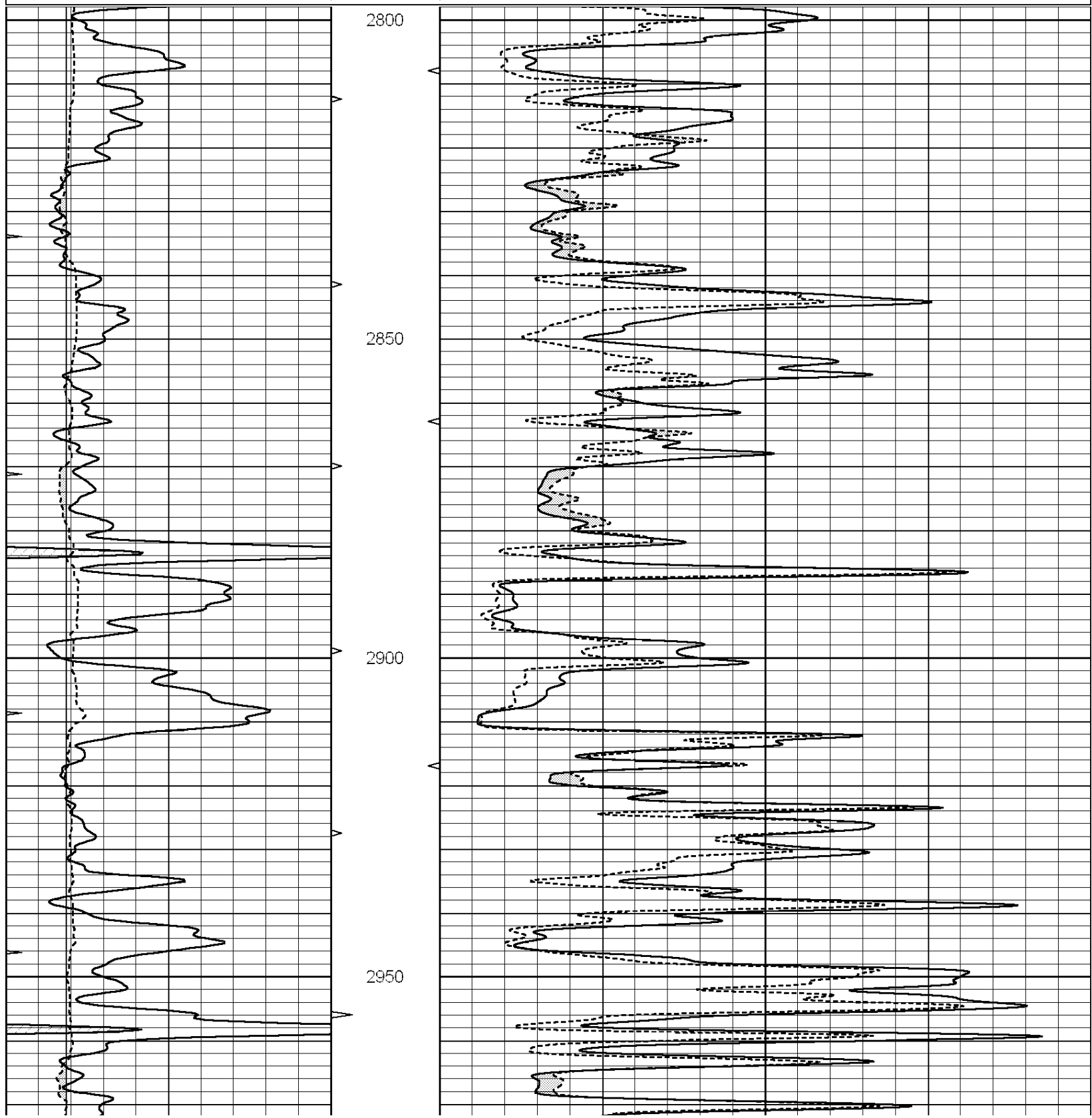


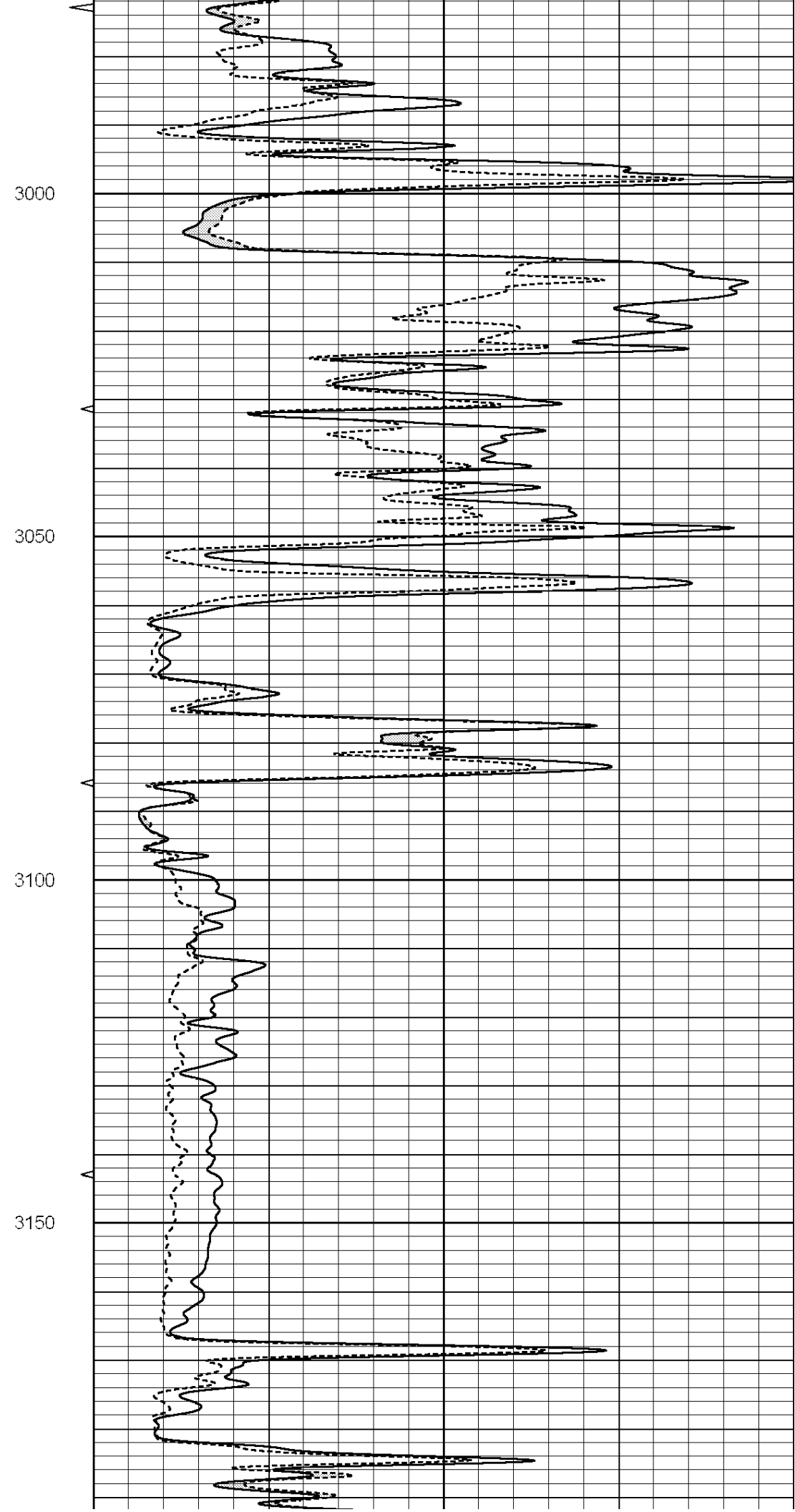
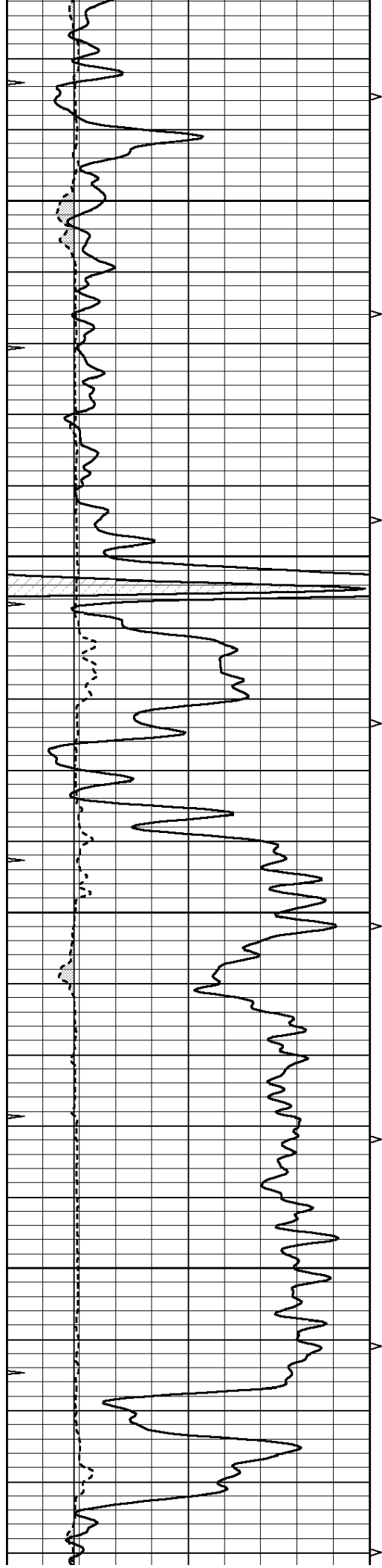
**SUPERIOR
Hays,
Kansas**

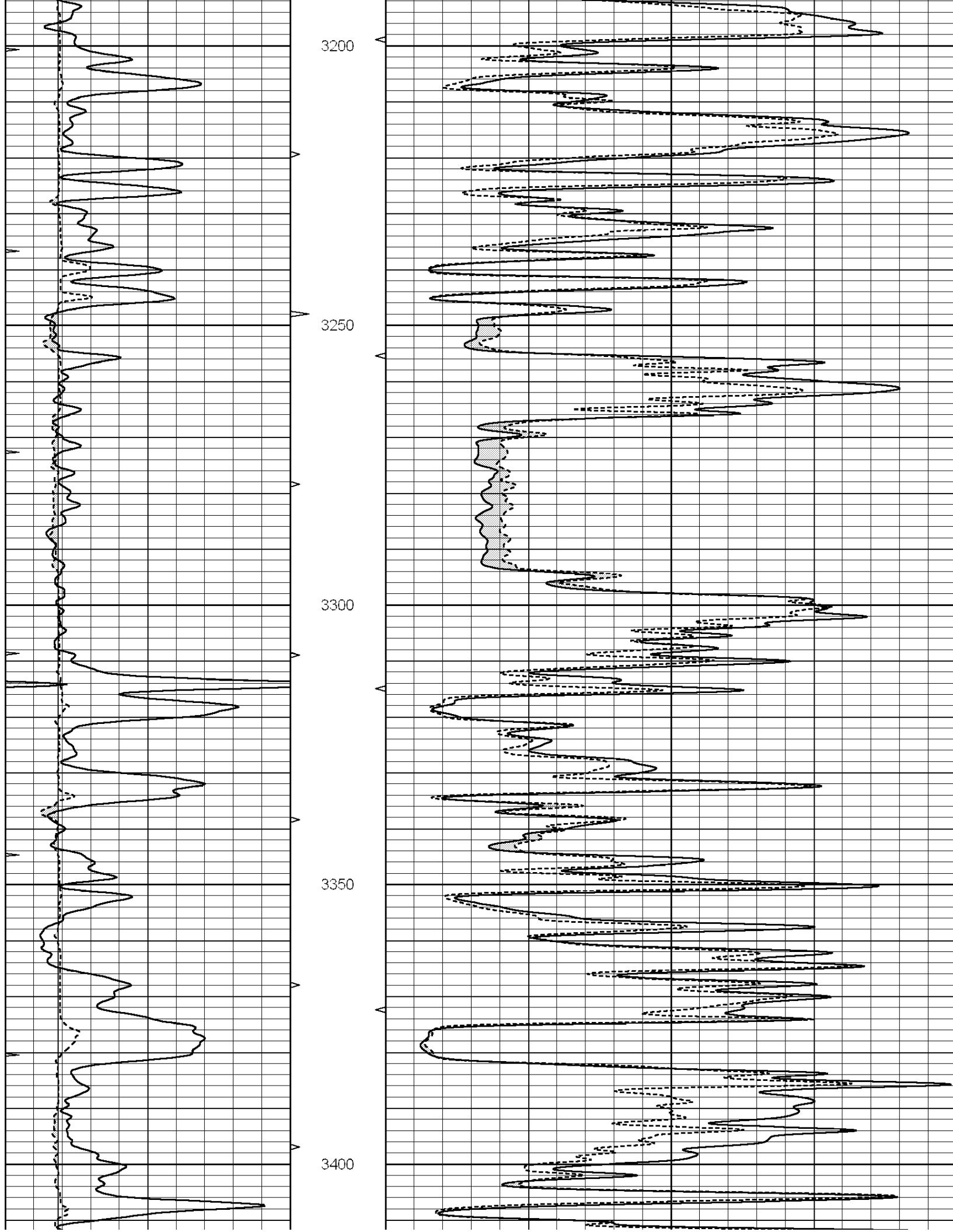
MAIN SECTION

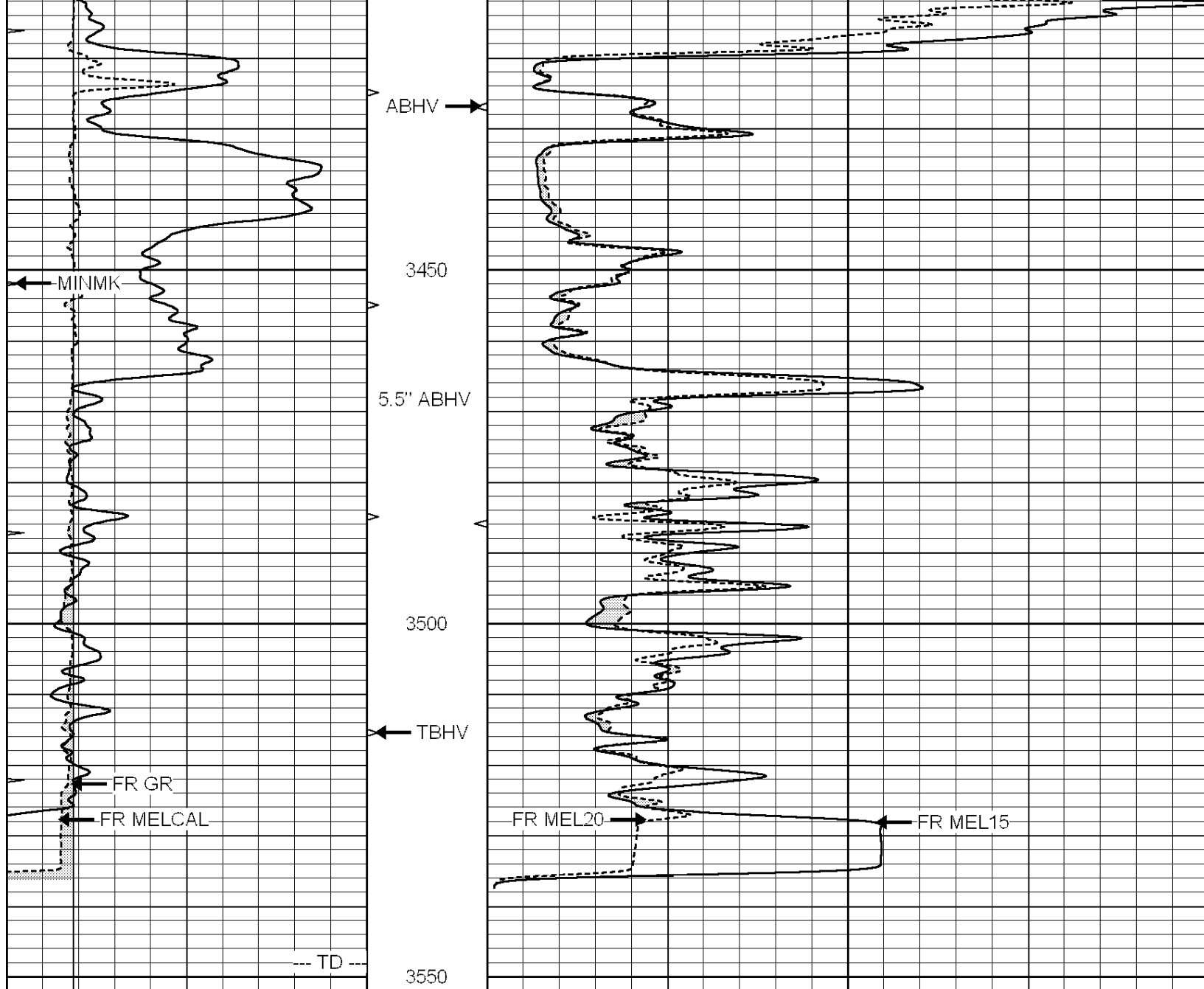
Database File: 005914ddn.db
 Dataset Pathname: pass5
 Presentation Format: micro
 Dataset Creation: Mon Nov 08 14:40:25 2010 by Log Open-Cased 090629
 Charted by: Depth in Feet scaled 1:240

0	GAMMA RAY (GAPI)	150	ABHV	0	MEL1.5 (Ohm-m)	40
6	CALIPER (in)	16	10 (ft3)	0 0	MEL2.0 (Ohm-m)	40
0	MINMK	20	TBHV			
			0 (ft3)	10		









0	GAMMA RAY (GAPI)	150	ABHV	0	MEL1.5 (Ohm-m)	40
6	CALIPER (in)	16	10 (ft3)	0 0	MEL2.0 (Ohm-m)	40
0	MINMK	20	TBHV			
			0 (ft3)	10		



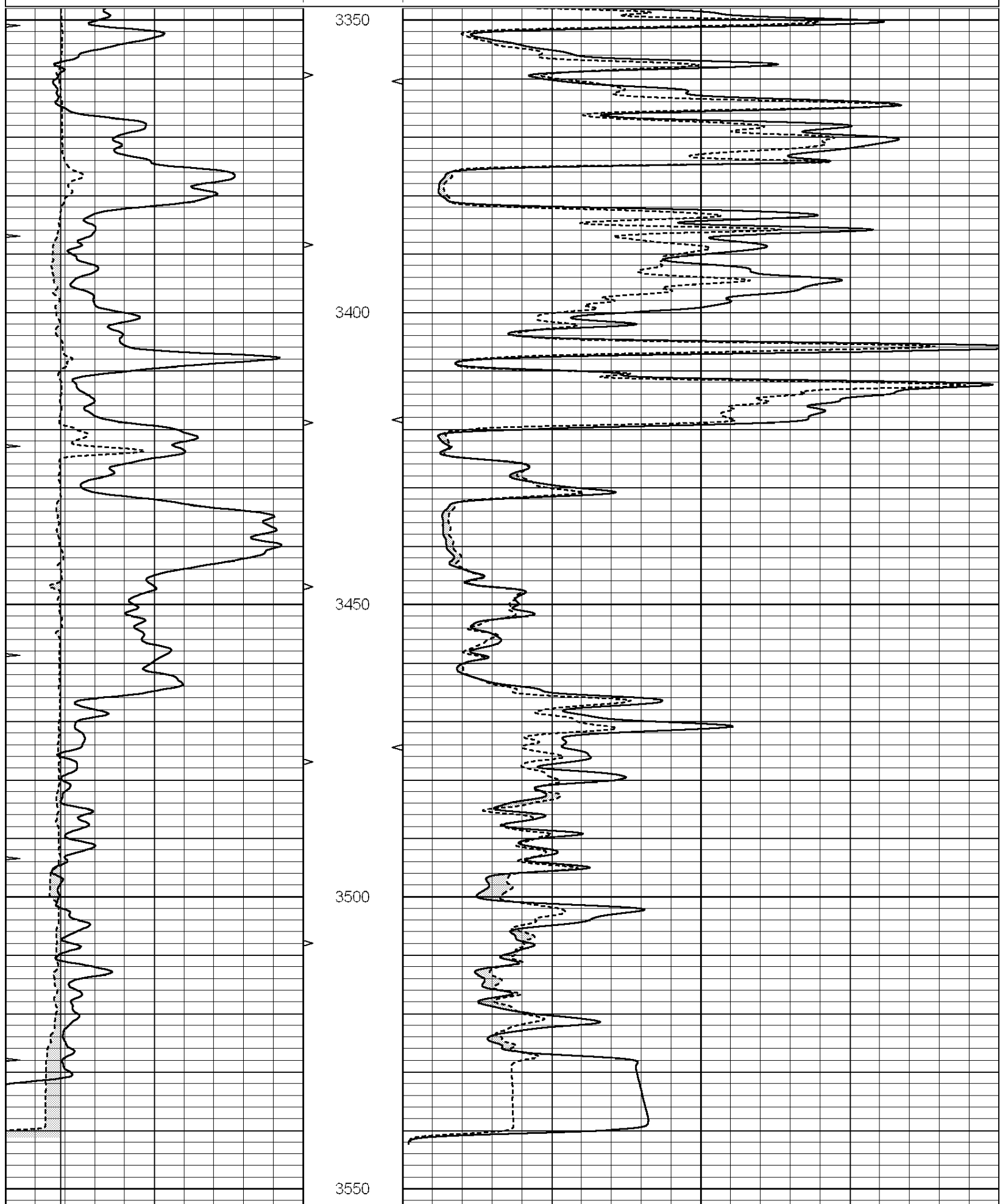
SUPERIOR
Hays,
Kansas

REPEAT SECTION

Database File: 005914ddn.db
 Dataset Pathname: pass4
 Presentation Format: micro
 Dataset Creation: Mon Nov 08 14:30:00 2010 by Log Open-Cased 090629
 Charted by: Depth in Feet scaled 1:240

0	GAMMA RAY (GAPI)	150	ABHV	0	MEL1.5 (Ohm-m)	40
6	CALIPER (in)	16	10 (ft3)	0 0	MEL2.0 (Ohm-m)	40
0	MINMK	20	TBHV			

0 (ft3) 10



3350

3400

3450

3500

3550

GAMMA RAY (API)

API

MFL 4.5 (Observed)

API

0	GAMMA RAY (GAPI)	150	ABHV	0	MEL2.0 (Ohm-m)	40
6	CALIPER (in)	16	10 (ft3)	0		40
0	MINMK	20	TBHV			
			0 (ft3)	10		

Calibration Report

Database File: 005914ddn.db
 Dataset Pathname: pass5
 Dataset Creation: Mon Nov 08 14:40:25 2010 by Log Open-Cased 090629

MICRO Calibration Report

Serial Number: Micro1
 Tool Model: ProbeL
 Performed: Mon Nov 08 09:18:25 2010

Caliper Calibration: Gain=3.171 Offset=-2.141

	Low Cal	High Cal
References	6.300	12.000
Readings	2.662	4.459

1.5" Calibration: Gain=40.000 Offset=0.400

	Low Cal	High Cal
References	0.000	20.000
Readings	0.003	0.844

2" Calibration: Gain=32.000 Offset=0.500

	Low Cal	High Cal
References	0.000	20.000
Readings	0.028	0.817

Gamma Ray Calibration Report

Serial Number: GR5
 Tool Model: OPEN
 Performed: Mon Nov 08 15:28:09 2010

Calibrator Value: 1.0 GAPI

Background Reading: 0.0 cps
 Calibrator Reading: 1.0 cps

Sensitivity: 0.6600 GAPI/cps