



# Microresistivity Log

**DIGITAL LOG** (785) 625-3858

API No. 15-193-20,796-00-00	Company <b>Credo Petroleum Corporation</b>	Location NW SE SE NW 2235' FNL & 2255' FWL	Other Services CNL/CDL DIL/BHCS
	Well <b>Hartzfeld No. 1-22</b>		
	Field <b>N/A</b>		
	County <b>Thomas</b>	State <b>Kansas</b>	
Permanent Datum Log Measured From Drilling Measured From	Ground Level Kelly Bushing Kelly Bushing	Elevation 3282 5 Ft. Above Perm. Datum	Elevation K.B. 3287 D.F. 3282 G.L. 3282
	Sec: <b>22</b>	Twp: <b>10 S</b>	Rge: <b>35 W</b>

Date	5/21/2011
Run Number	Two
Depth Driller	4930
Depth Logger	4930
Bottom Logged Interval	4929
Top Log Interval	3800
Casing Driller	8.625 @ 261
Casing Logger	259
Bit Size	7.875
Type Fluid in Hole	Chemical
Salinity, ppm CL	6.200
Density / Viscosity	9.3   59
pH / Fluid Loss	10.0   9.6
Source of Sample	Flowline
Rm @ Meas. Temp	.52 @ 65
Rmf @ Meas. Temp	.39 @ 65
Rmc @ Meas. Temp	.70 @ 65
Source of Rmf / Rmc	Charts
Rm @ BHT	.27 @ 127
Operating Rig Time	6 Hours
Max Rec. Temp. F	127
Equipment Number	4
Location	Hays
Recorded By	K. Bange
Witnessed By	Bruce Ard

<<< Fold Here >>>

All interpretations are opinions based on inferences from electrical or other measurements and we cannot and do not guarantee the accuracy or correctness of any interpretation, and we shall not, except in the case of gross or willful negligence on our part, be liable or responsible for any loss, costs, damages, or expenses incurred or sustained by anyone resulting from any interpretation made by any of our officers, agents or employees. These interpretations are also subject to our general terms and conditions set out in our current Price Schedule.

**Comments**

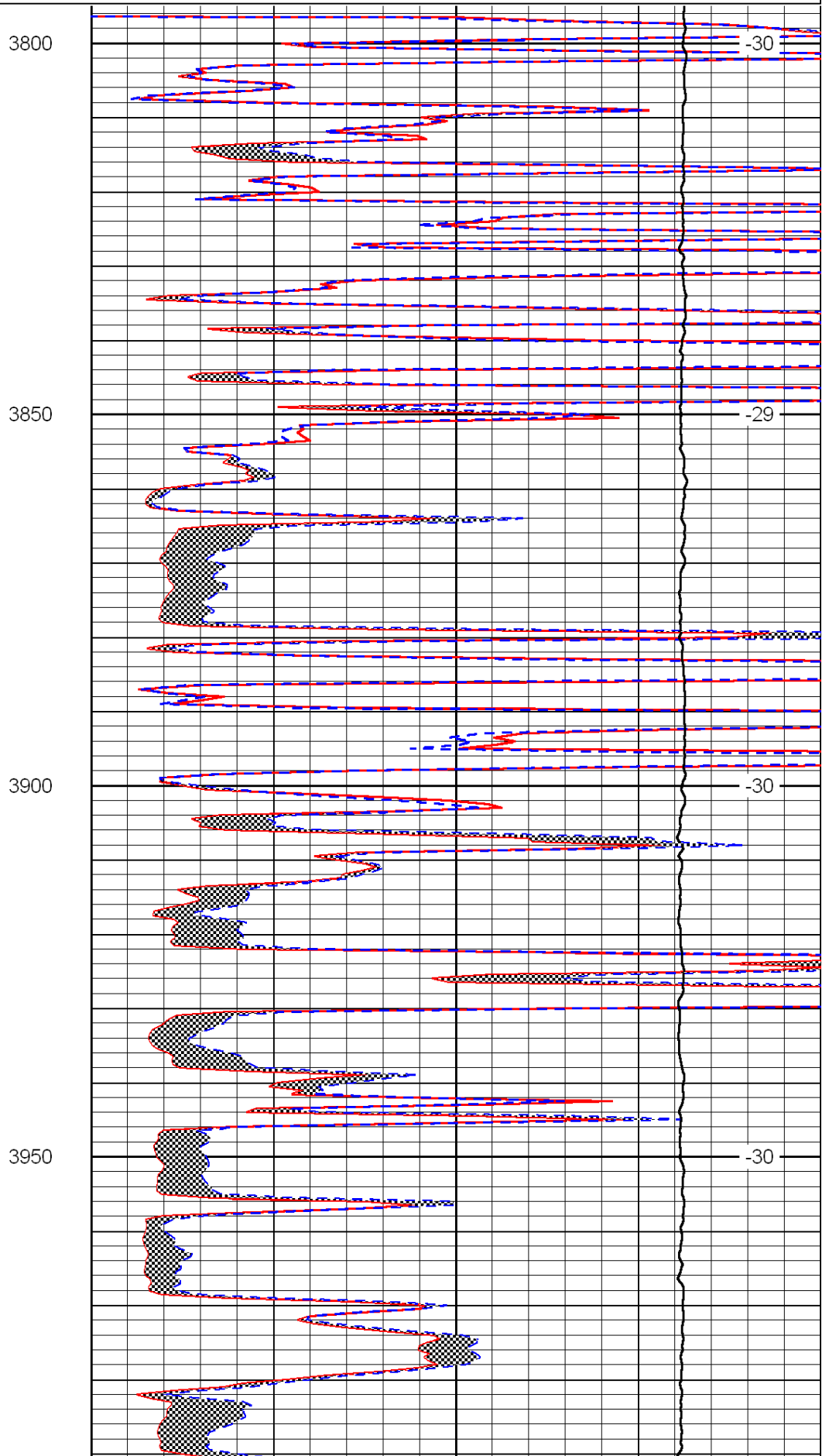
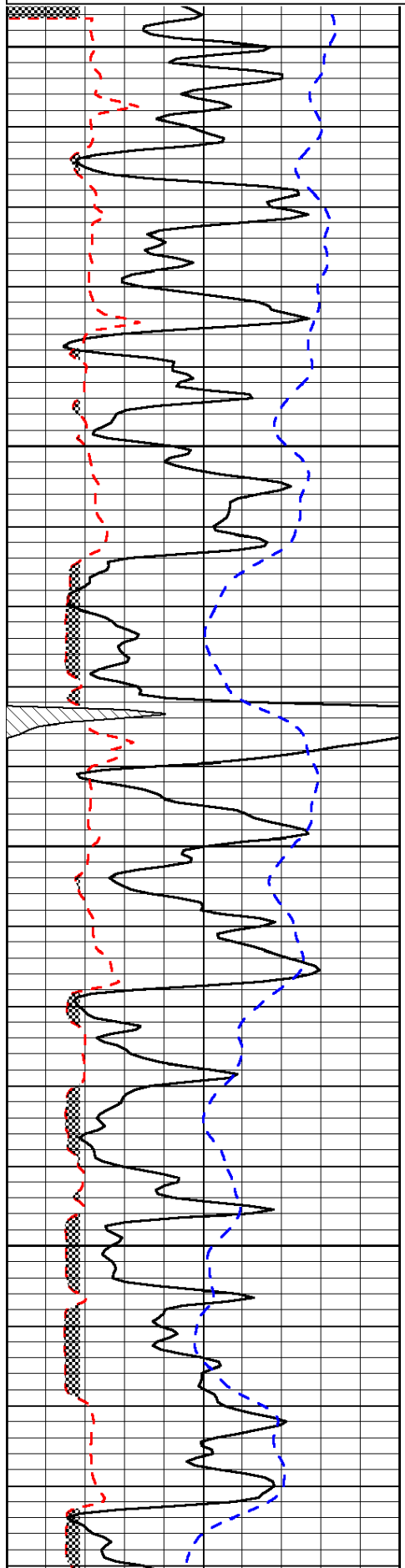
Thank you for using Log-Tech, Inc.  
(785) 625-3858

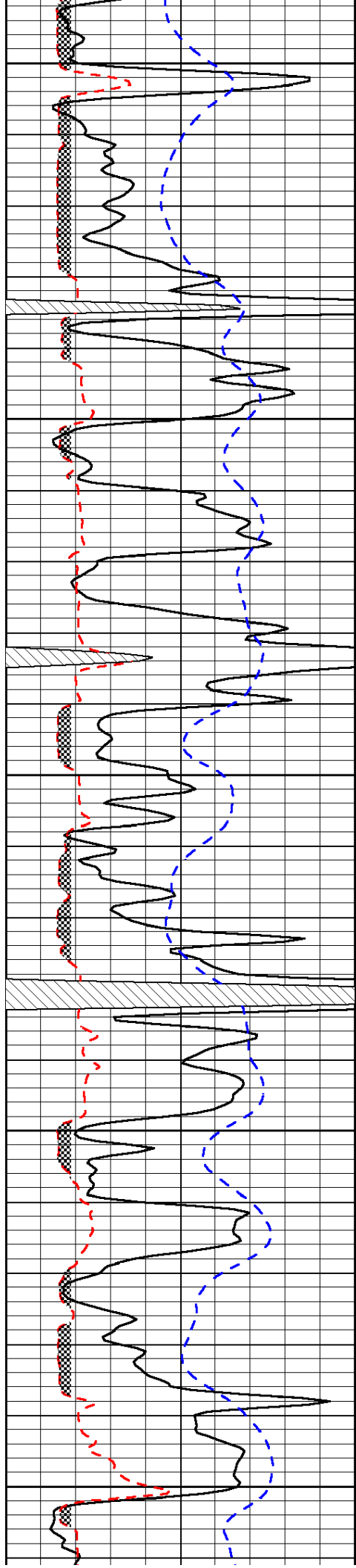
Oakley, W on Hwy 40 to Winona,  
N on blacktop to TH rd D (road corrects E 2mi then back N),  
1/2 W, S into

0	Gamma Ray	150
6	Micro Log Caliper (GAPI)	16
-200	SP (mV)	0

0	Micro Inverse 1 X 1	40
0	Micro Normal 2"	40
15000	Line Weight	0

LSPD





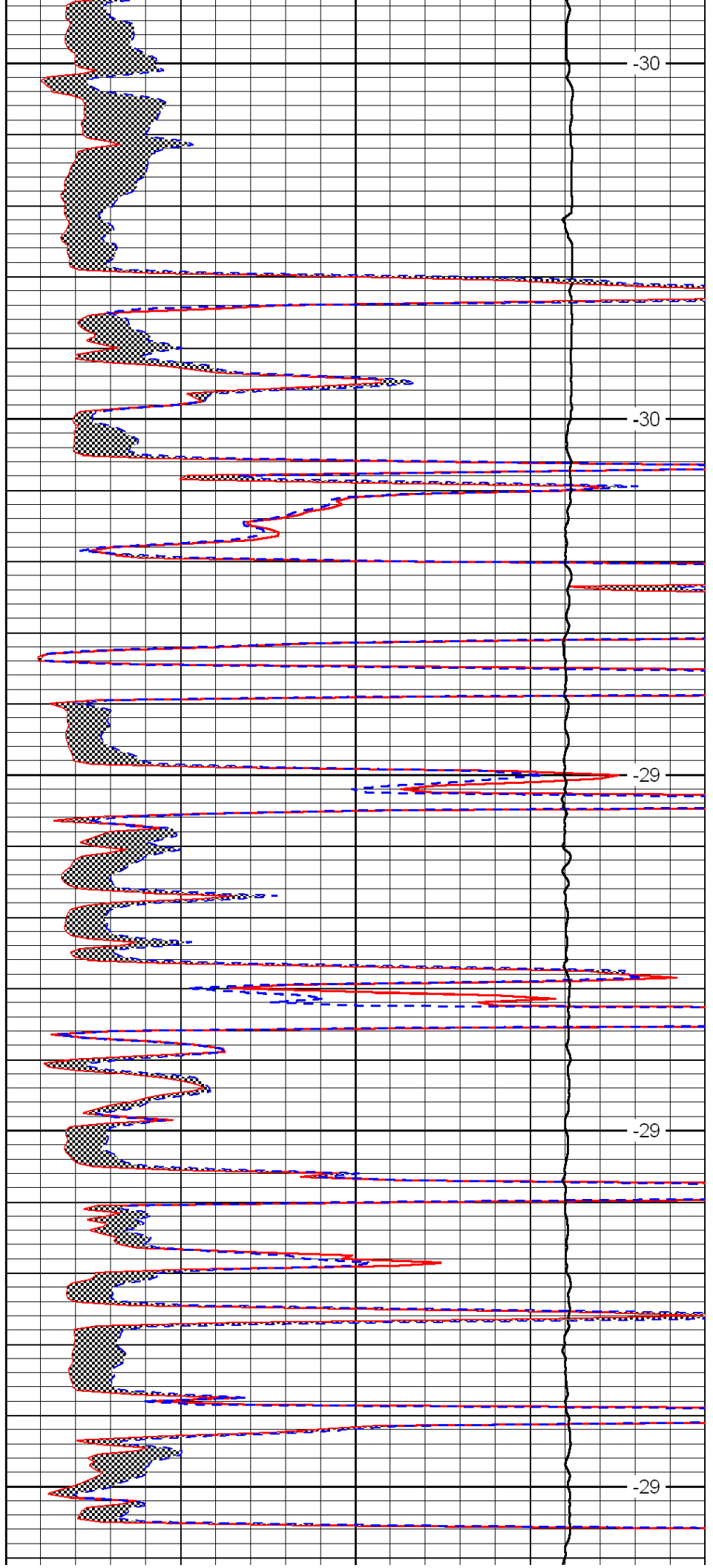
4000

4050

4100

4150

4200



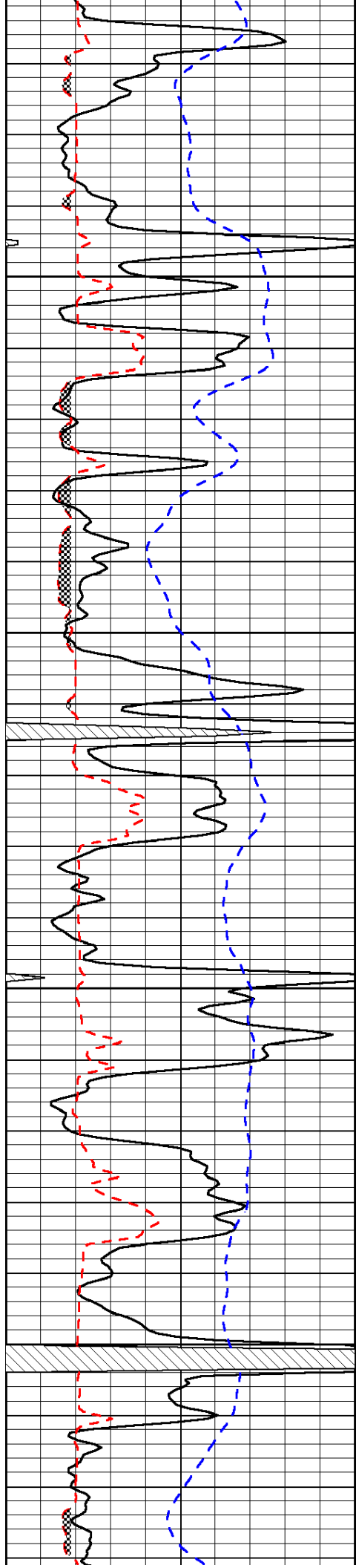
-30

-30

-29

-29

-29

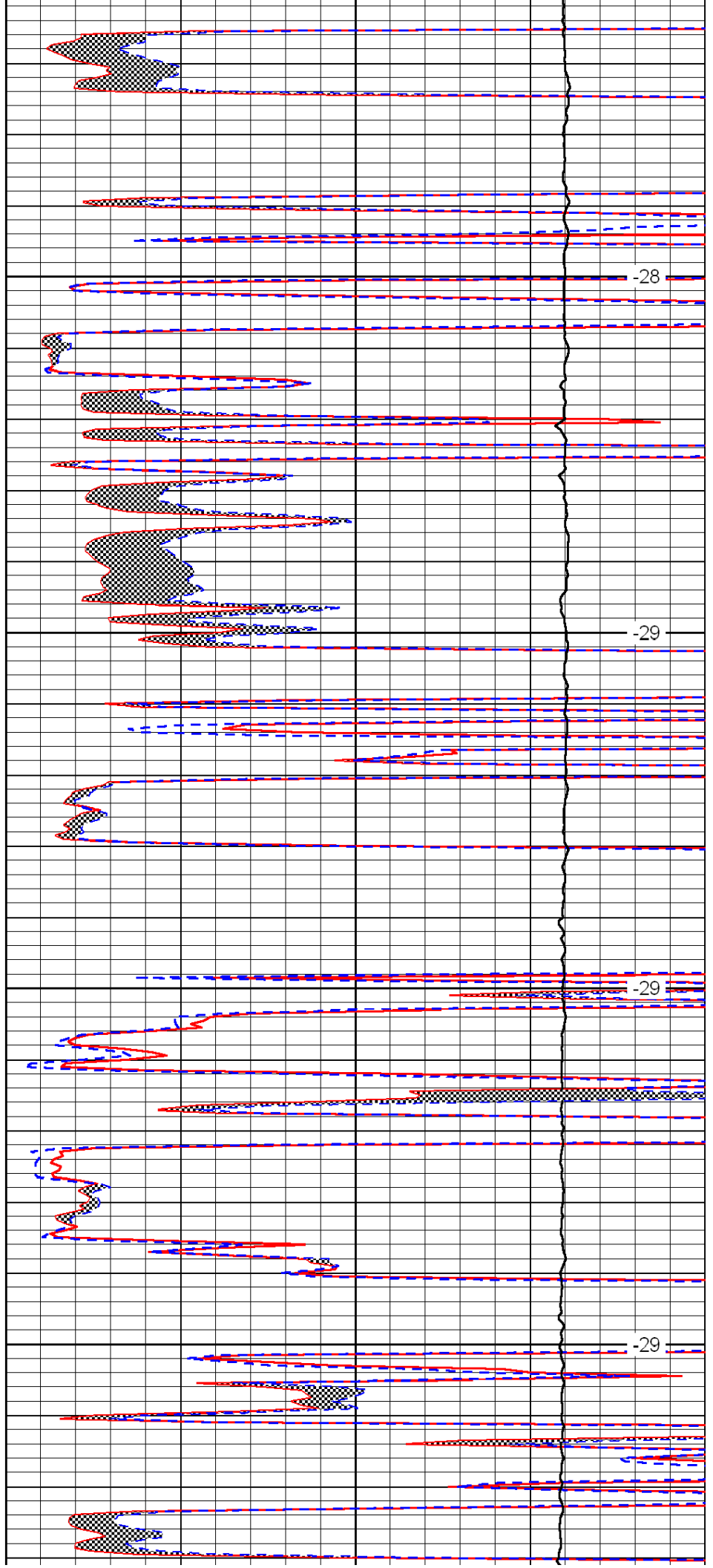


4250

4300

4350

4400

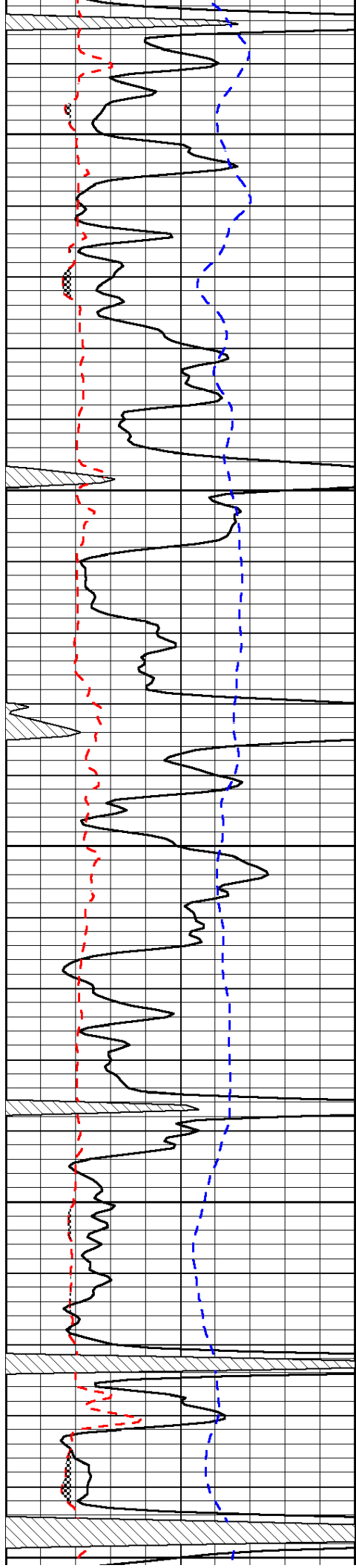


-28

-29

-29

-29



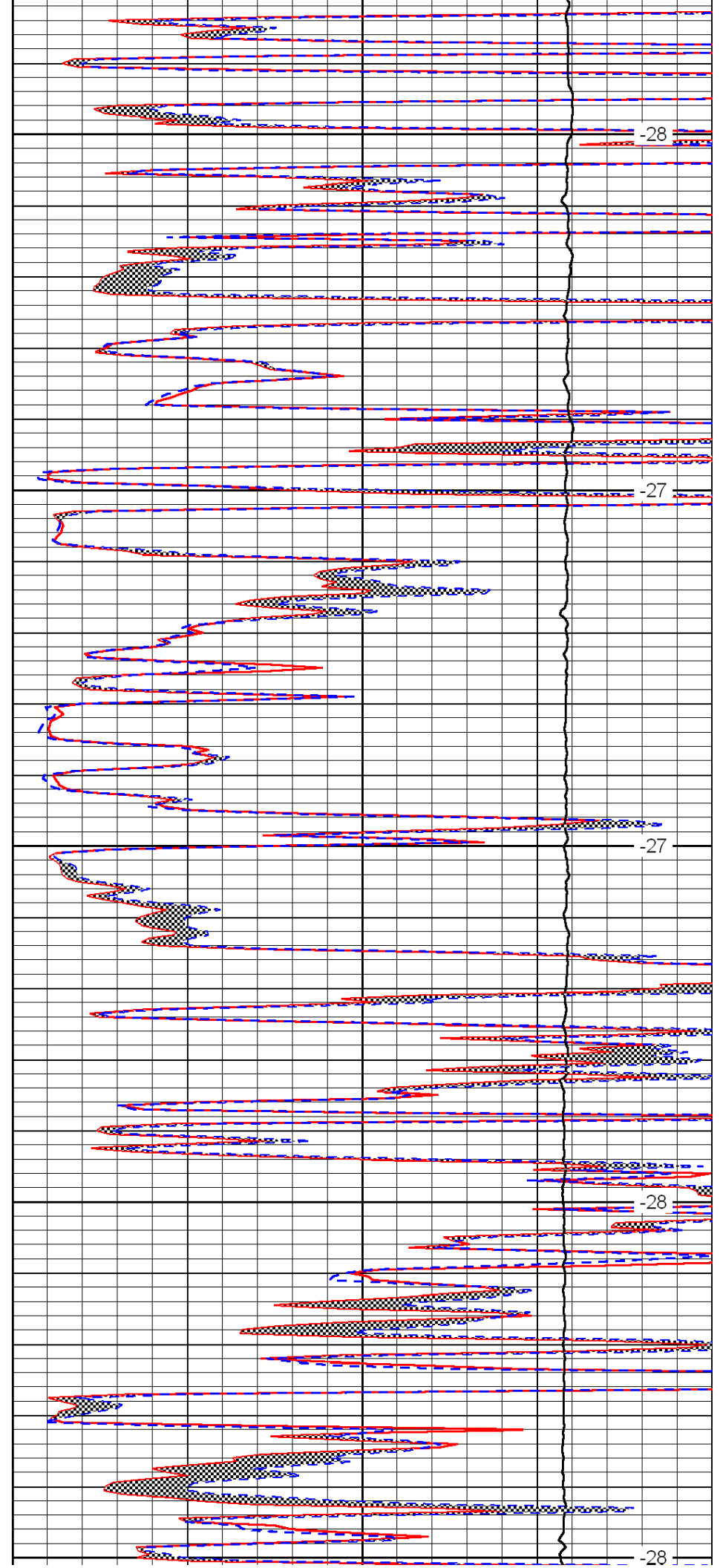
4450

4500

4550

4600

4650



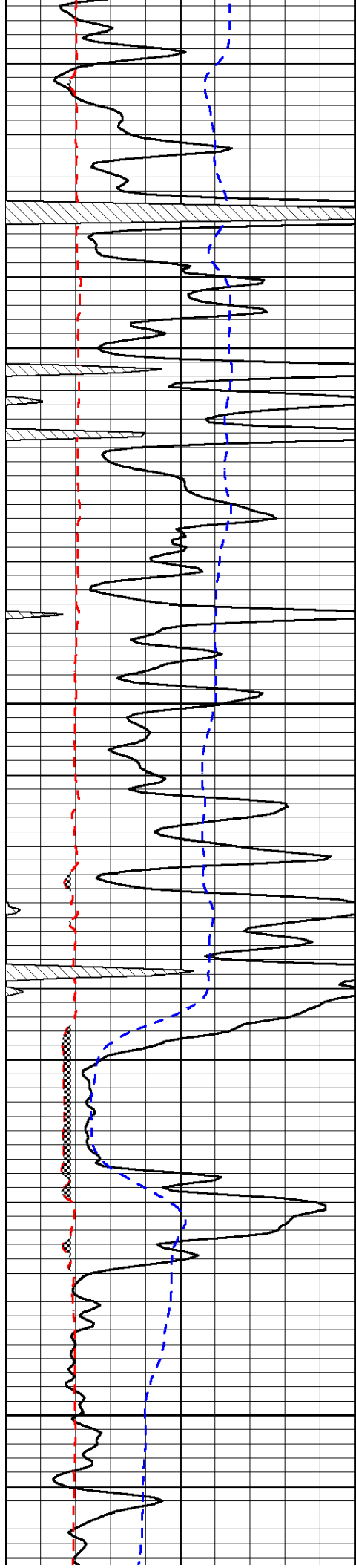
-28

-27

-27

-28

-28

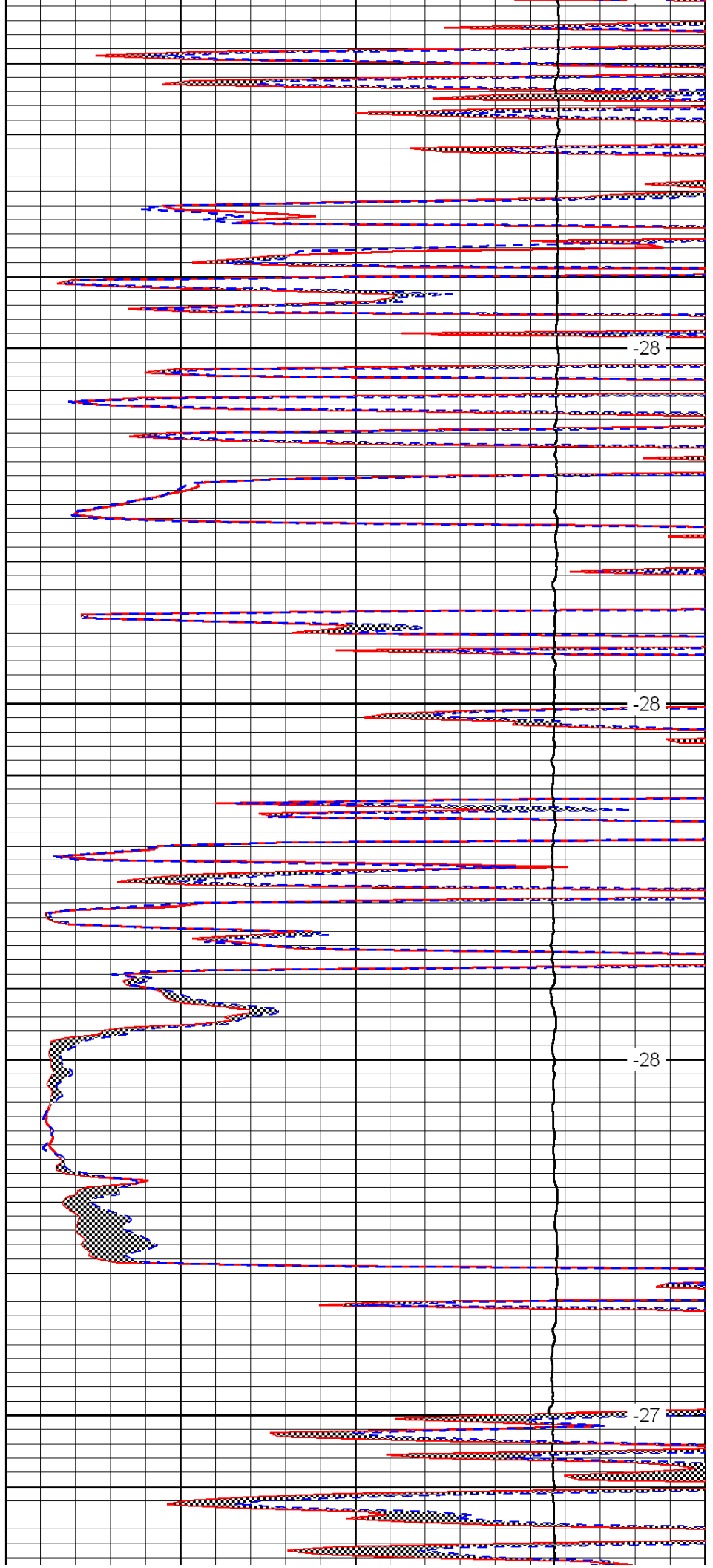


4700

4750

4800

4850

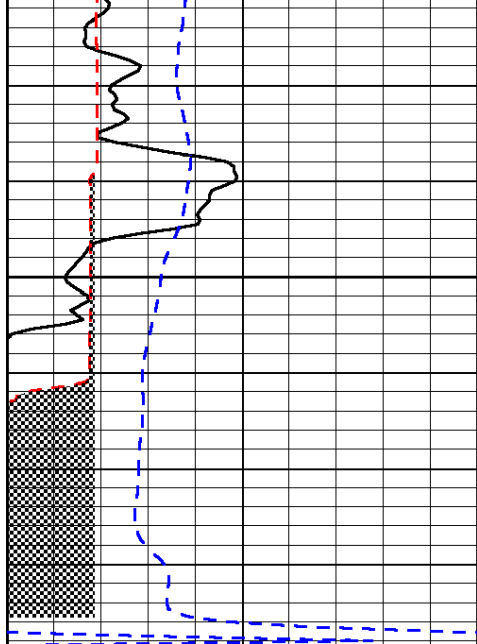


-28

-28

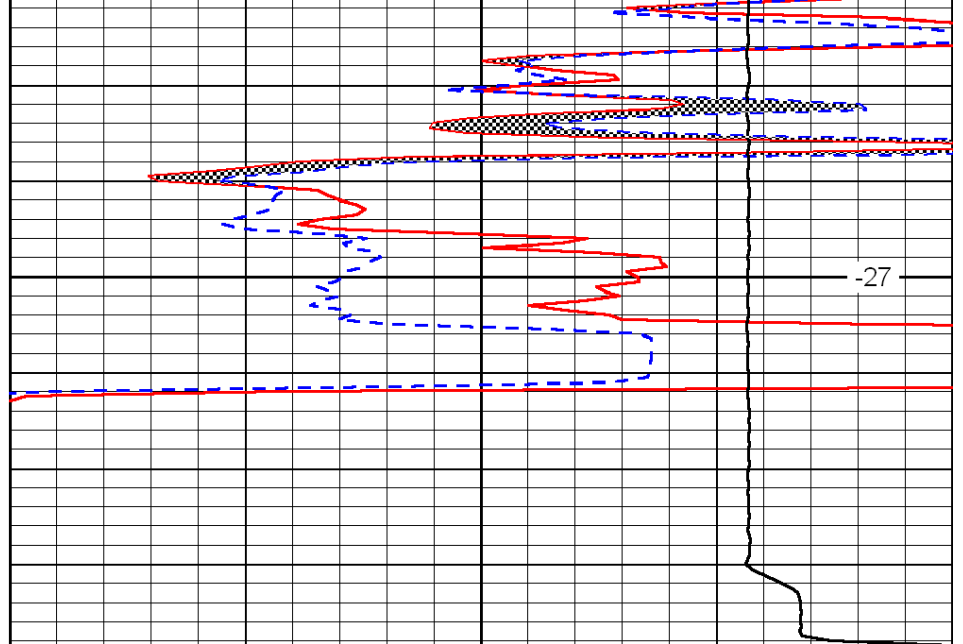
-28

-27



0	Gamma Ray	150
6	Micro Log Caliper (GAPI)	16
-200	SP (mV)	0

4900



0	Micro Inverse 1 X 1	40
0	Micro Normal 2'	40
15000	Line Weight	0

LSPD