



Dual Induction Log

DIGITAL LOG (785) 625-3858

API No.	15-193-20,796-00-00	
Company	Credo Petroleum Corporation	
Well	Hartzfeld No. 1-22	
Field	N/A	
County	Thomas	State
Location	NW SE SE NW 2235' FNL & 2255' FWL	
Sec: 22	Twp: 10 S	Rge: 35 W
Other Services	CNL/CDL MEL/BHCS	
Elevation	K.B. 3287 D.F. 3282 G.L. 3282	

Permanent Datum	Ground Level	Elevation	3282
Log Measured From	Kelly Bushing	5	Ft. Above Perm. Datum
Drilling Measured From	Kelly Bushing		
Date	5/21/2011		
Run Number	One		
Depth Driller	4930		
Depth Logger	4930		
Bottom Logged Interval	4929		
Top Log Interval	250		
Casing Driller	8.625 @ 261		
Casing Logger	259		
Bit Size	7.875		
Type Fluid in Hole	Chemical		
Salinity, ppm CL	6.200		
Density / Viscosity	9.3	59	
pH / Fluid Loss	10.0	9.6	
Source of Sample	Flowline		
Rm @ Meas. Temp	.52	@	65
Rmf @ Meas. Temp	.39	@	65
Rmc @ Meas. Temp	.70	@	65
Source of Rmf / Rmc	Charts		
Rm @ BHT	.27	@	127
Operating Rig Time	6 Hours		
Max Rec. Temp. F	127		
Equipment Number	4		
Location	Hays		
Recorded By	K. Bange		
Witnessed By	Bruce Ard		

<<< Fold Here >>>

All interpretations are opinions based on inferences from electrical or other measurements and we cannot and do not guarantee the accuracy or correctness of any interpretation, and we shall not, except in the case of gross or willful negligence on our part, be liable or responsible for any loss, costs, damages, or expenses incurred or sustained by anyone resulting from any interpretation made by any of our officers, agents or employees. These interpretations are also subject to our general terms and conditions set out in our current Price Schedule.

Comments

Thank you for using Log-Tech, Inc.
(785) 625-3858

Oakley, W on Hwy 40 to Winona,
N on blacktop to TH rd D (road corrects E 2mi then back N),
1/2 W, S into

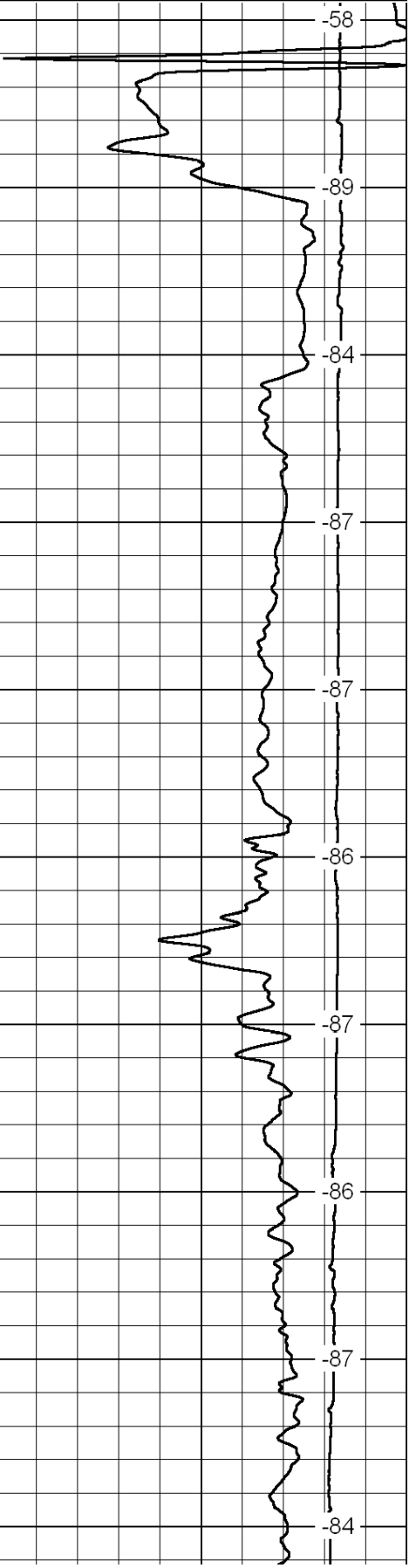
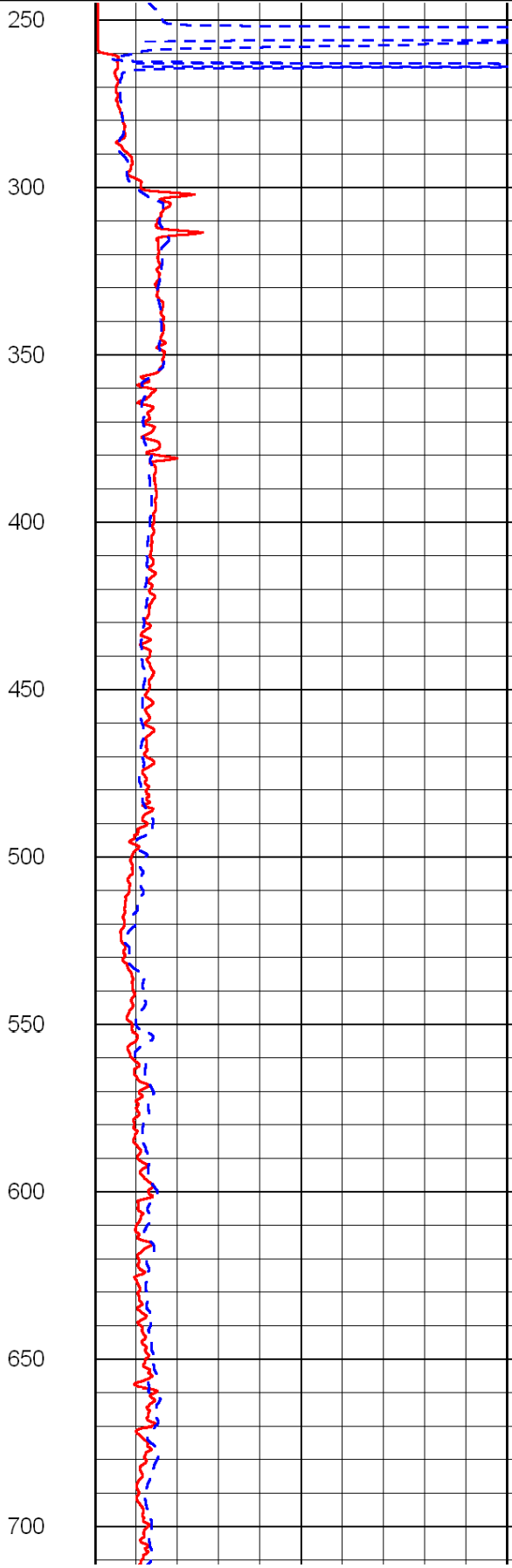
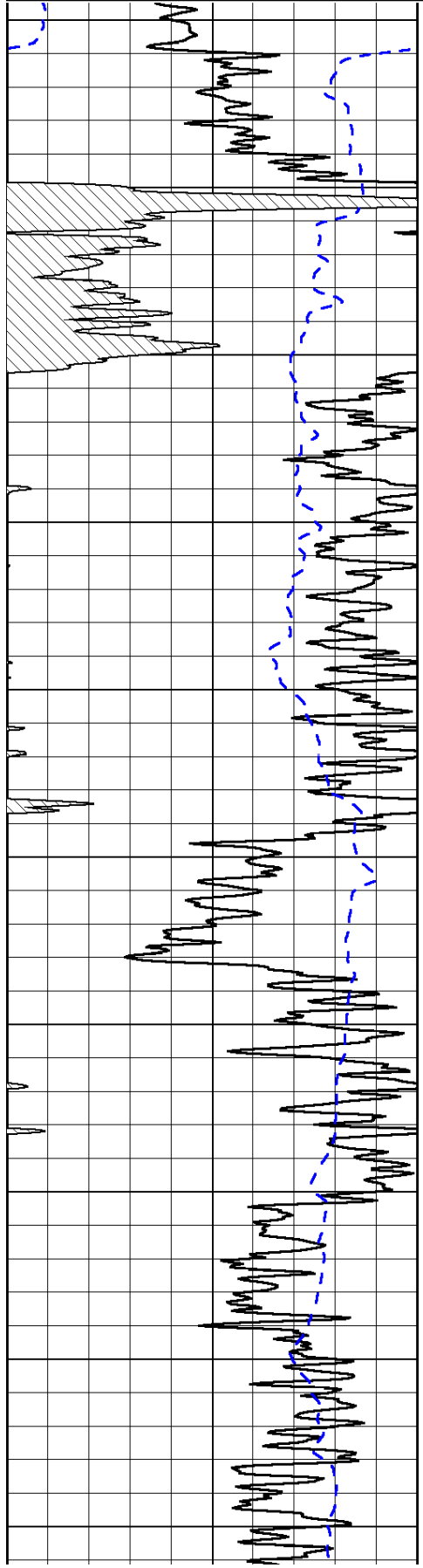
0	Gamma Ray	150
-200	SP (mV)	0

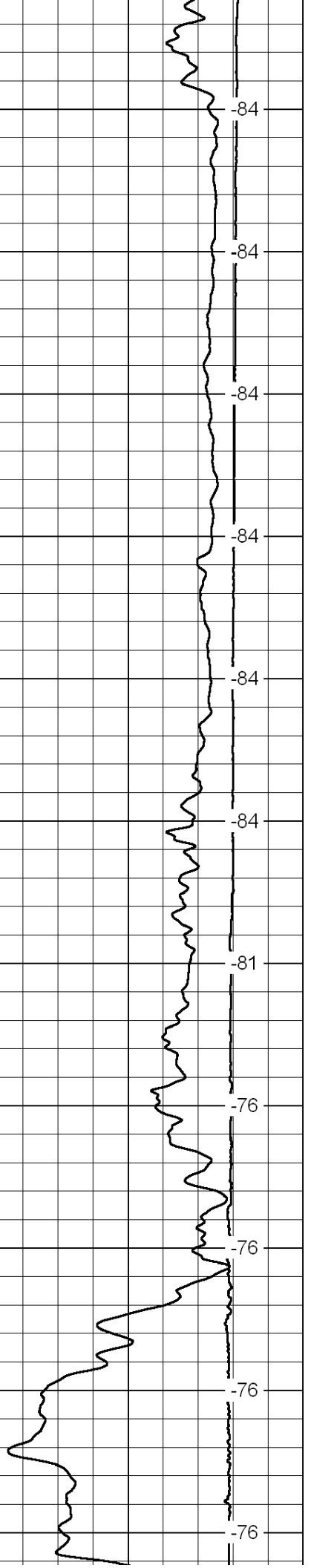
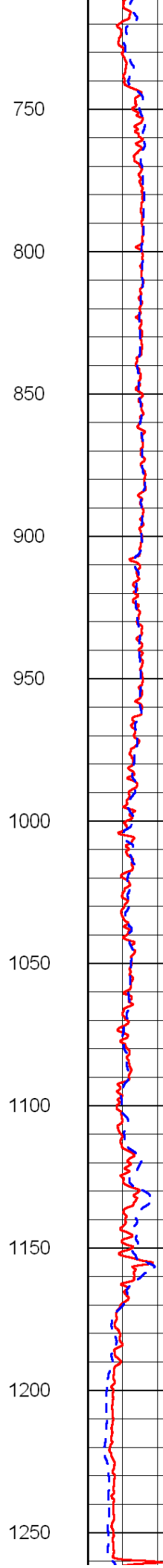
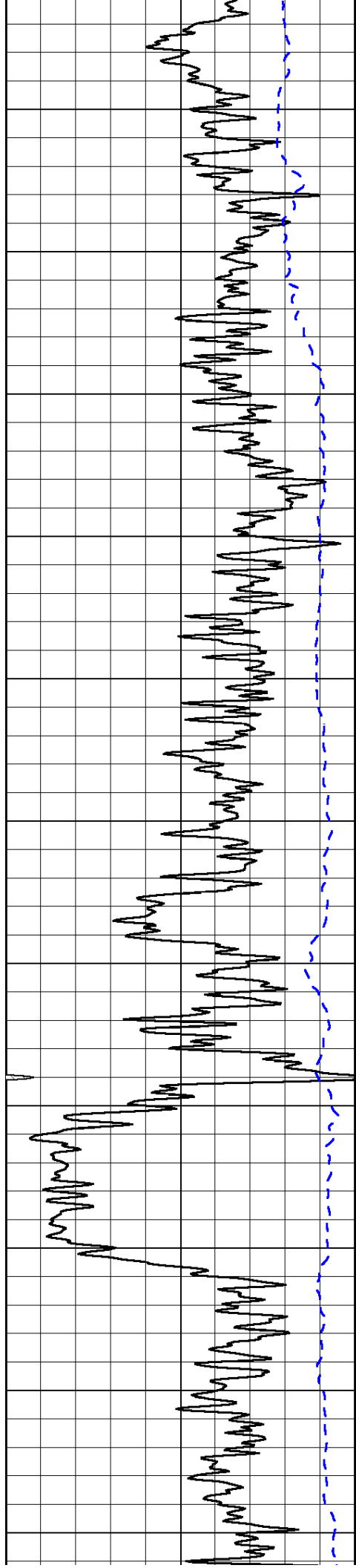
0	Shallow Resistivity	50
0	Deep Resistivity	50

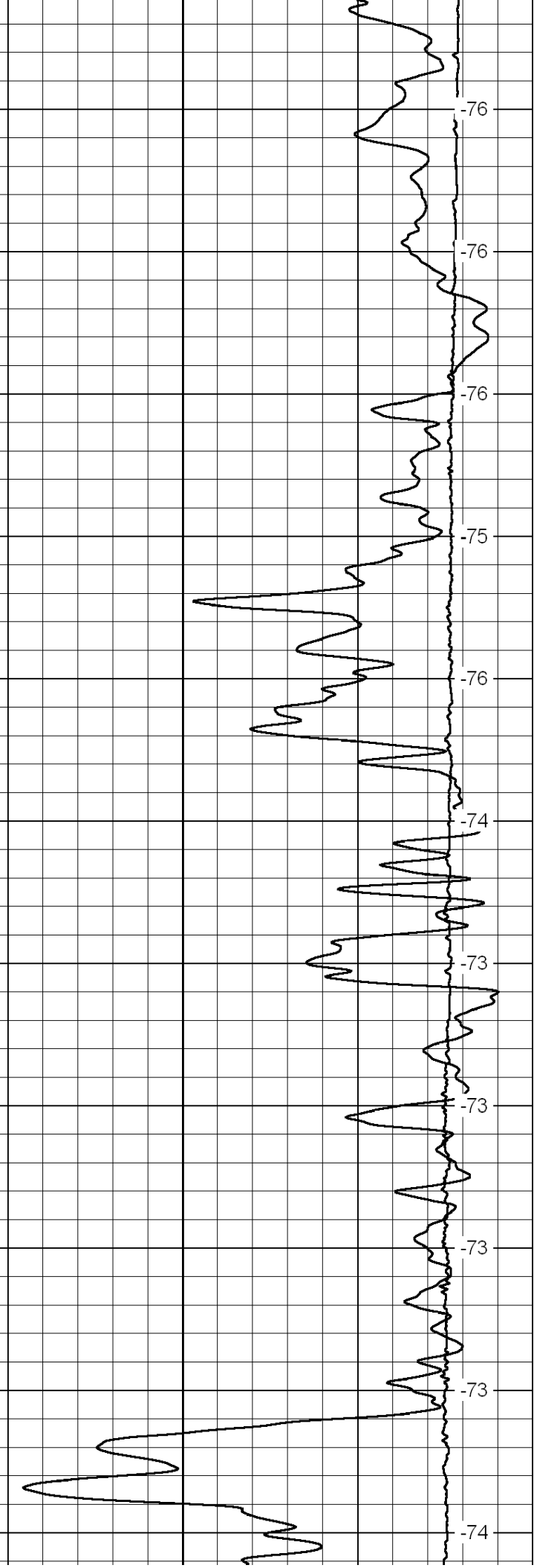
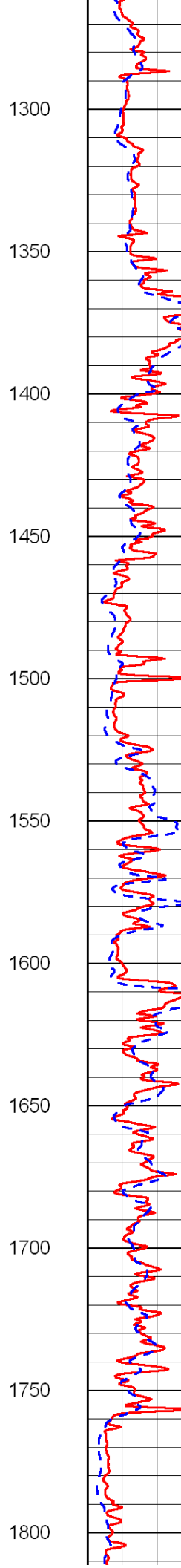
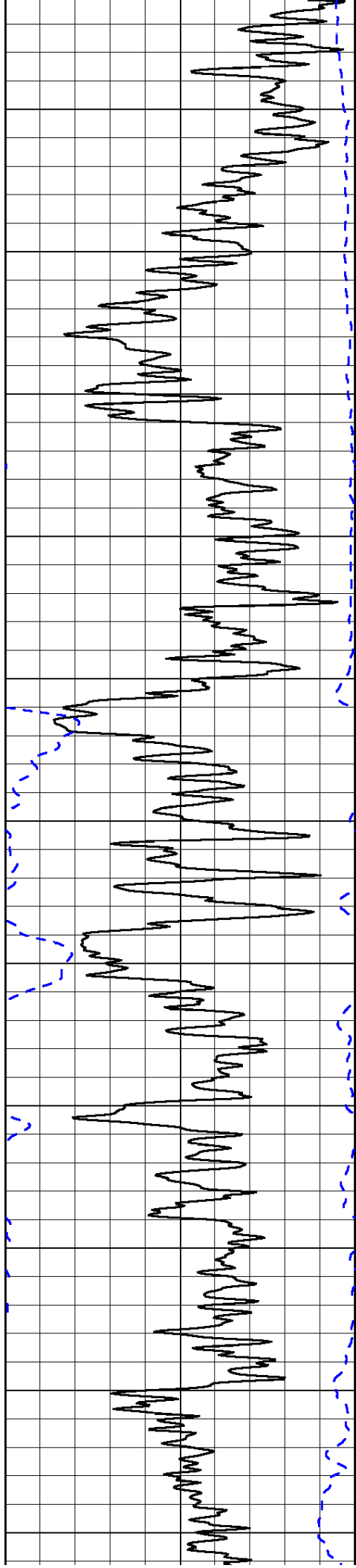
LSPD

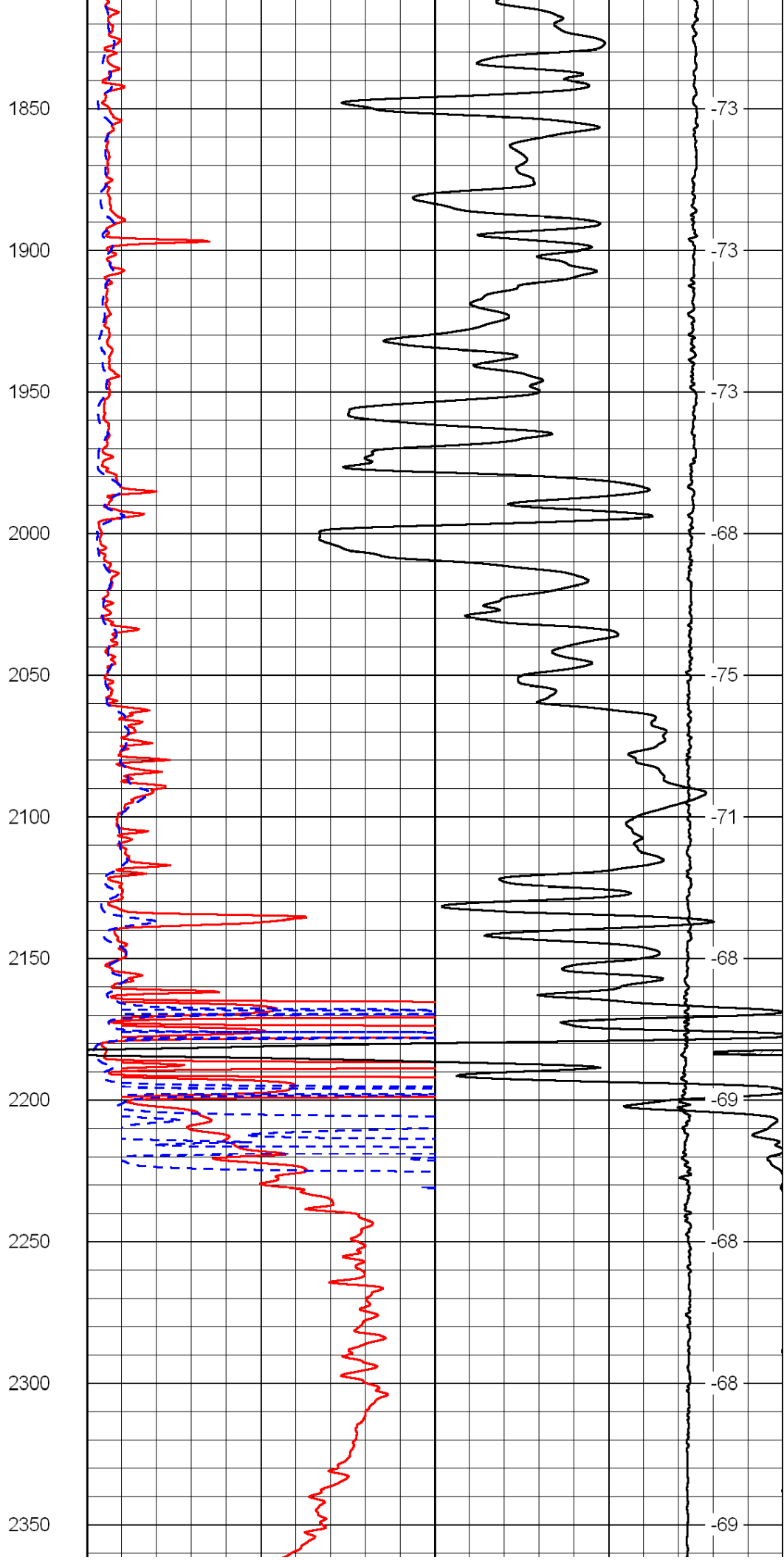
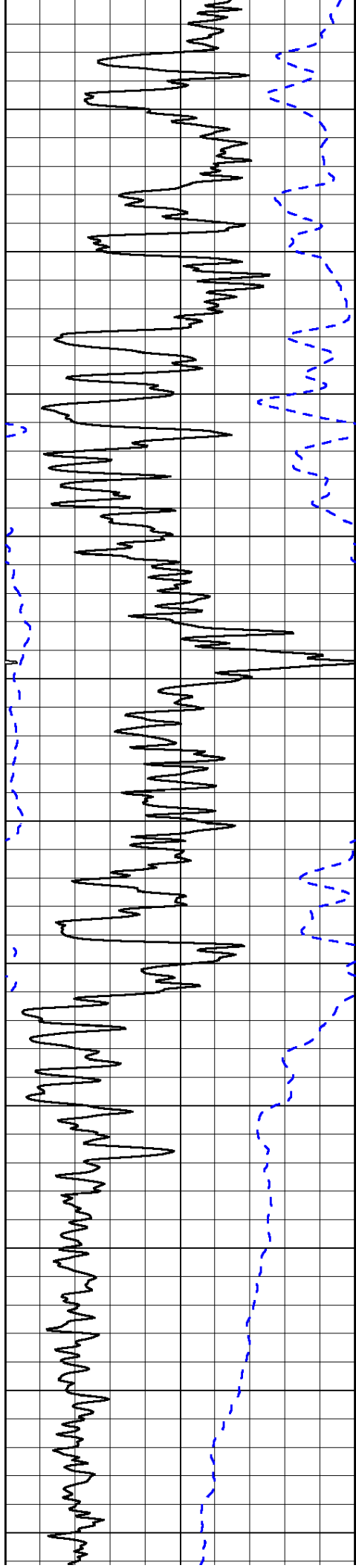
1000	Conductivity	0
15000	Line Tension	0

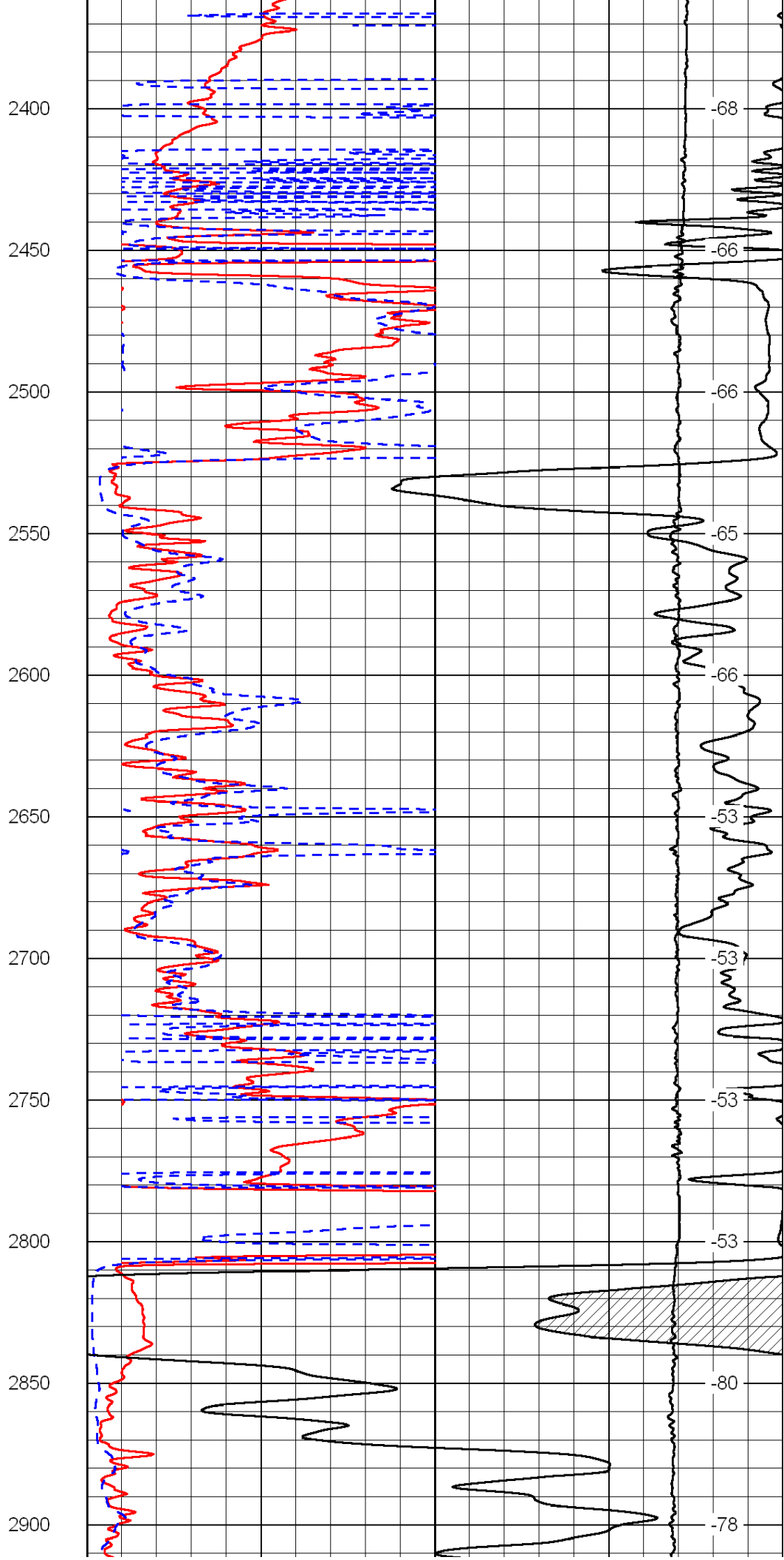
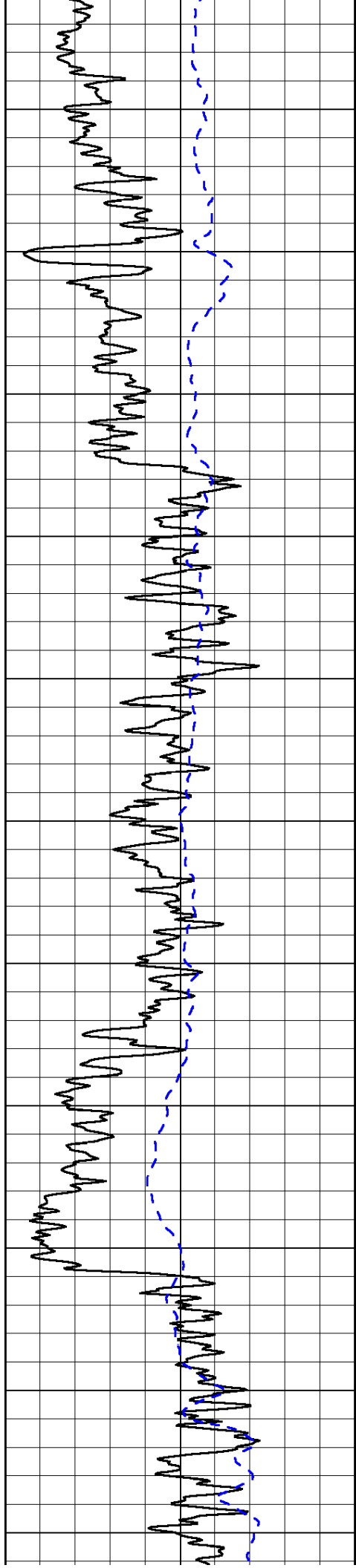
50	Shallow Resistivity	500
50	Deep Resistivity	500

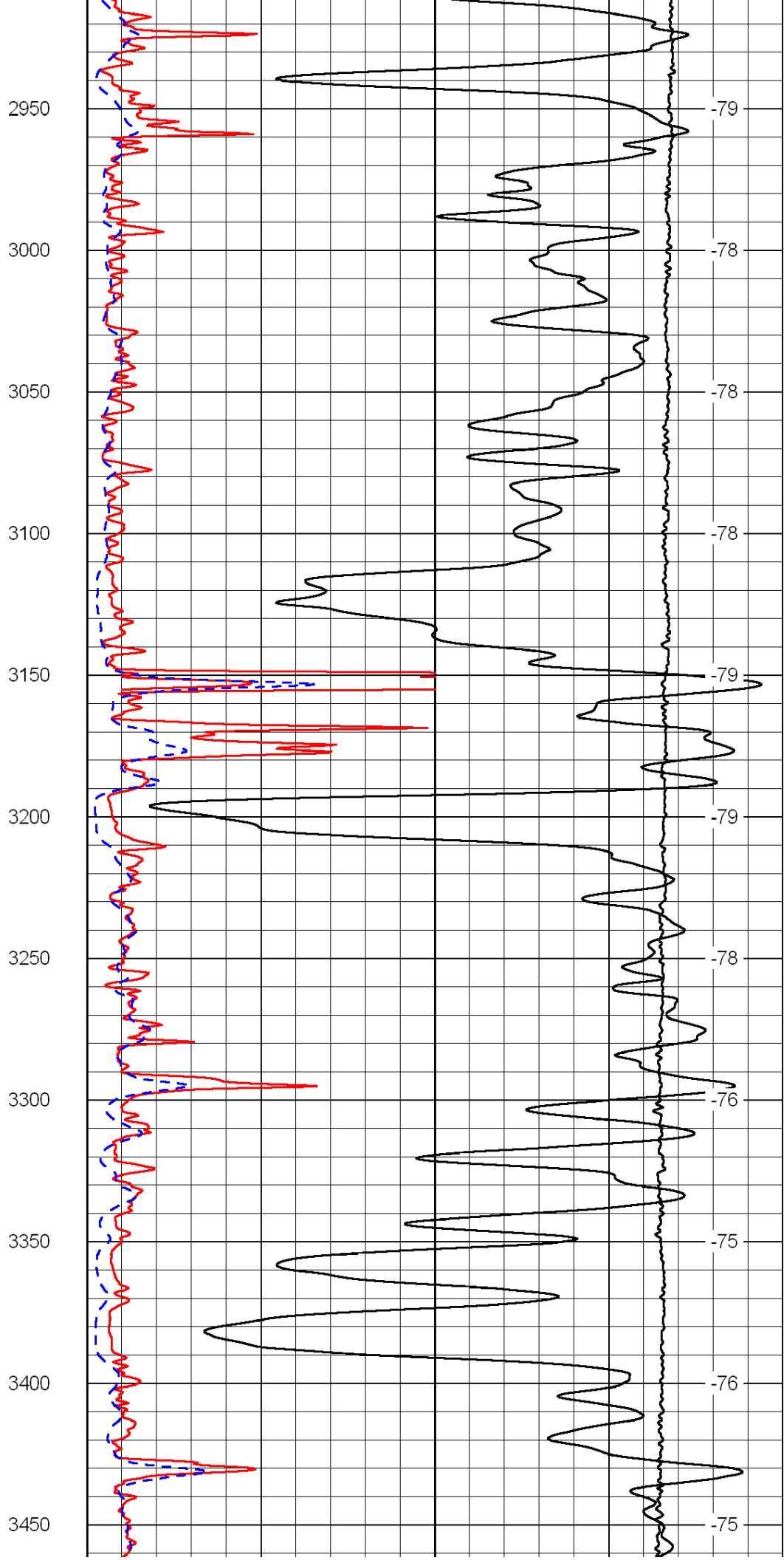
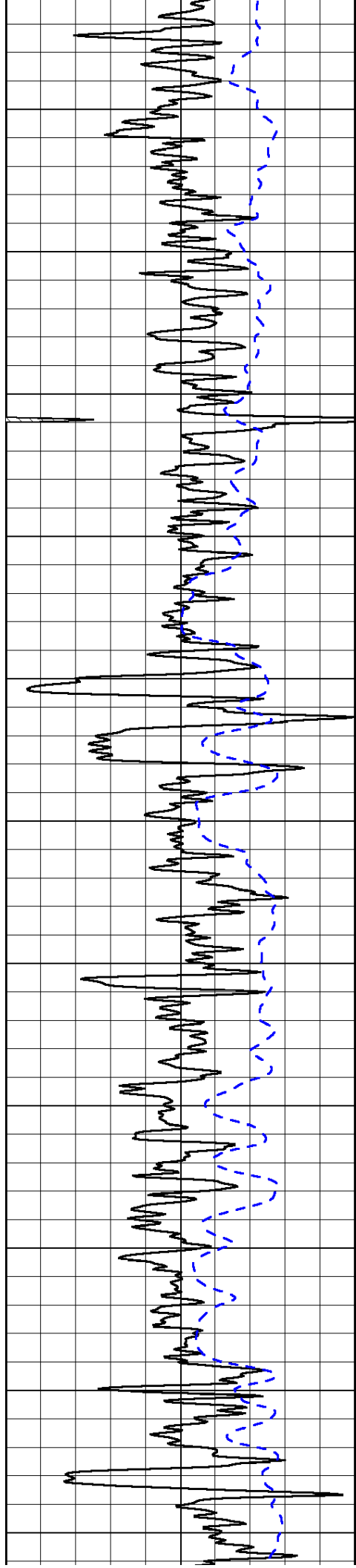


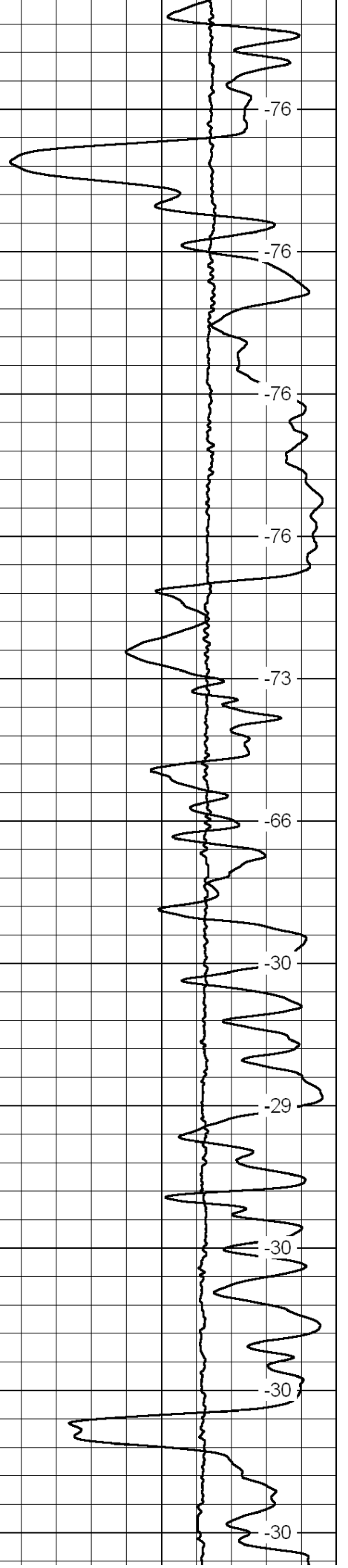
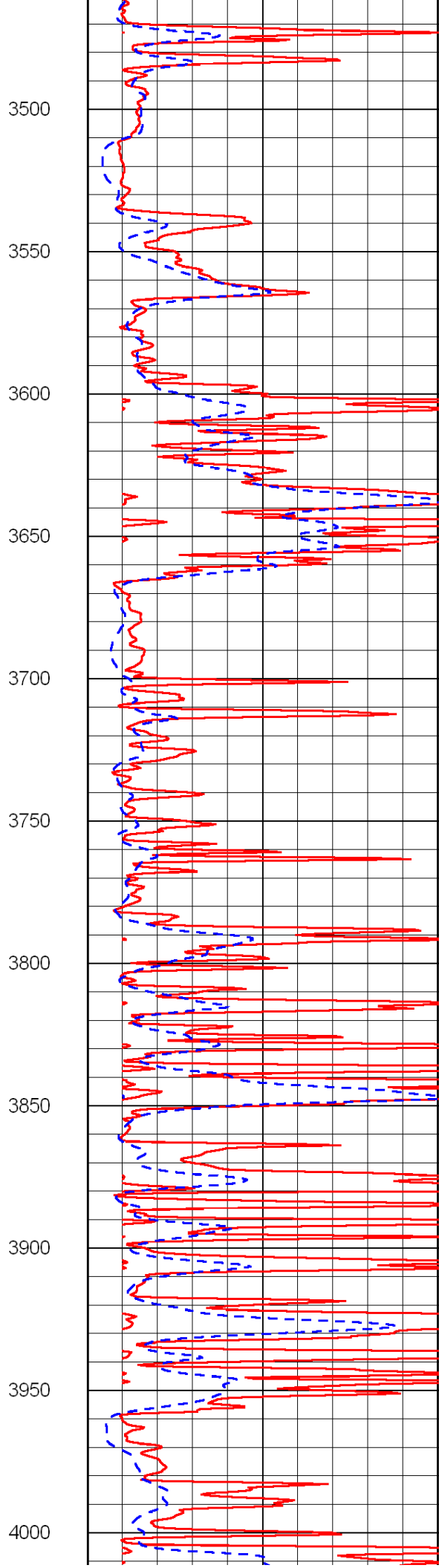
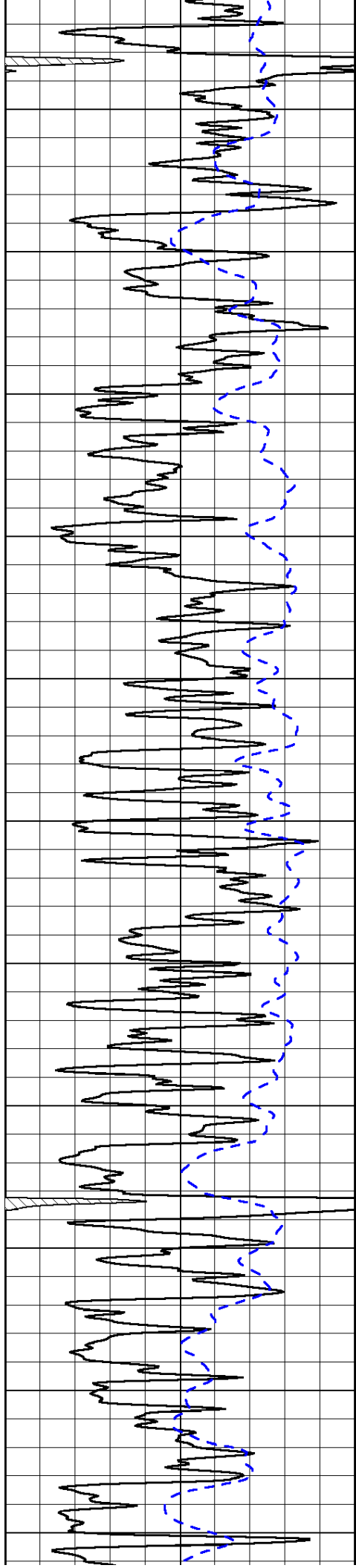


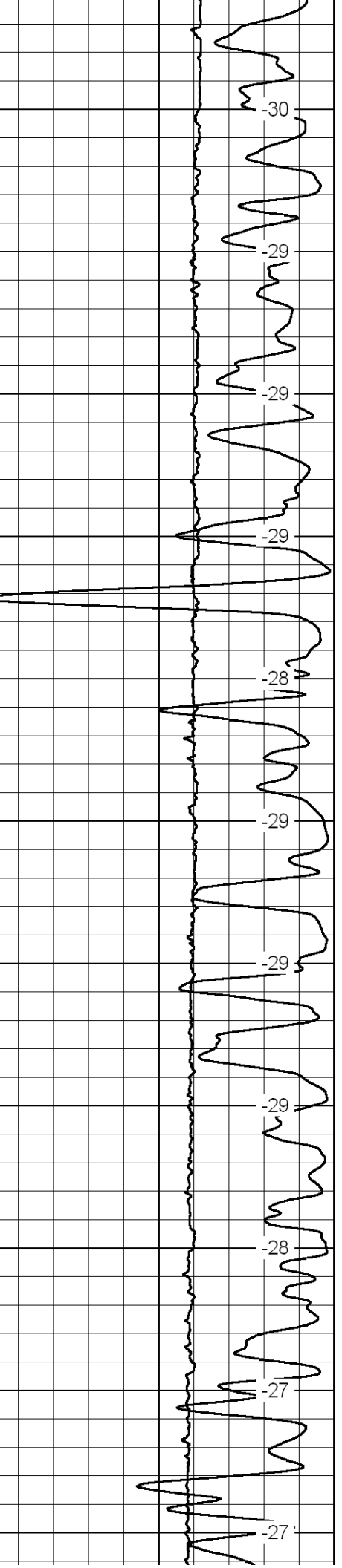
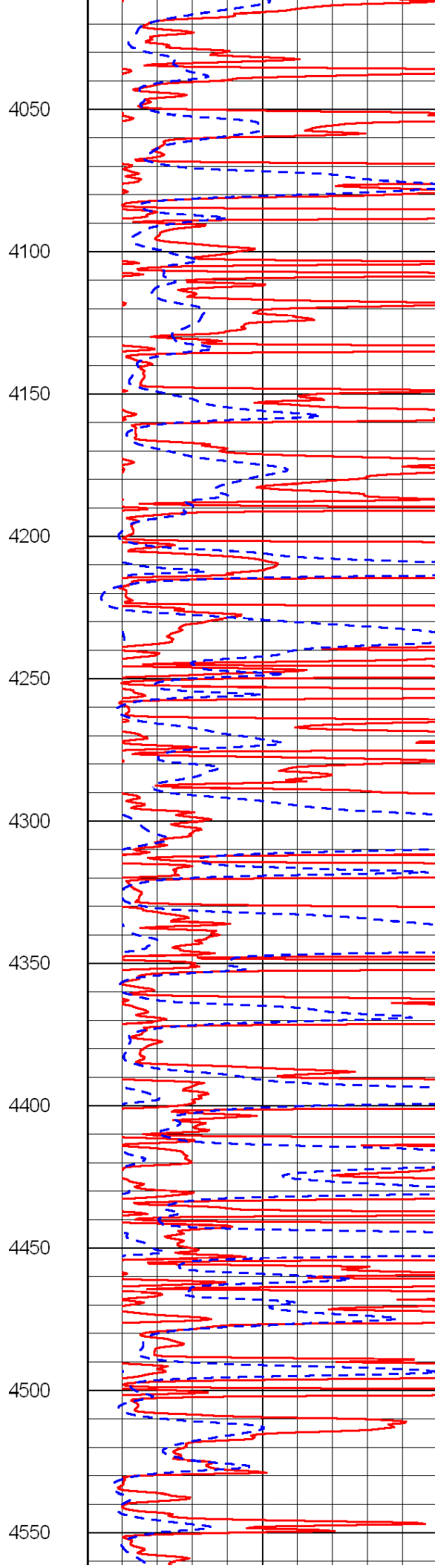
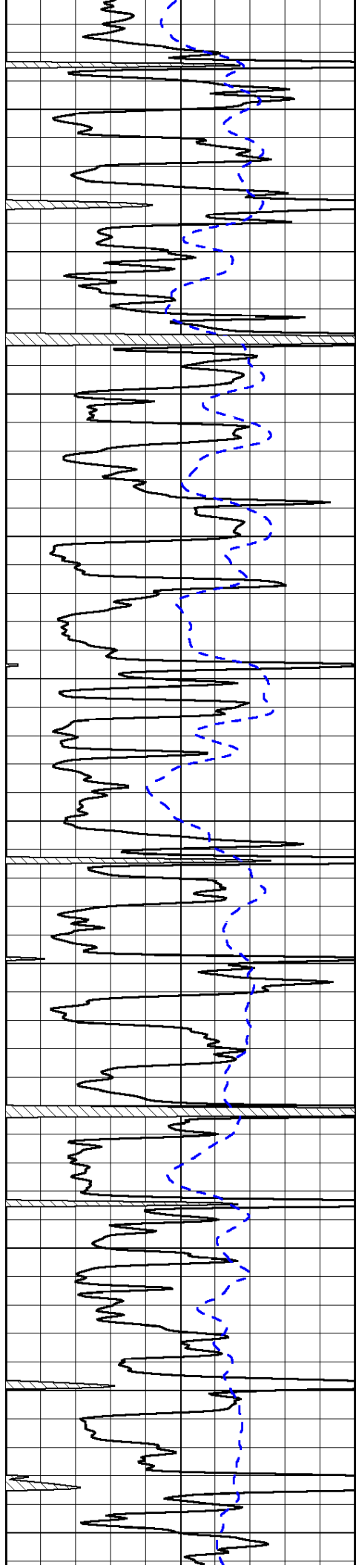


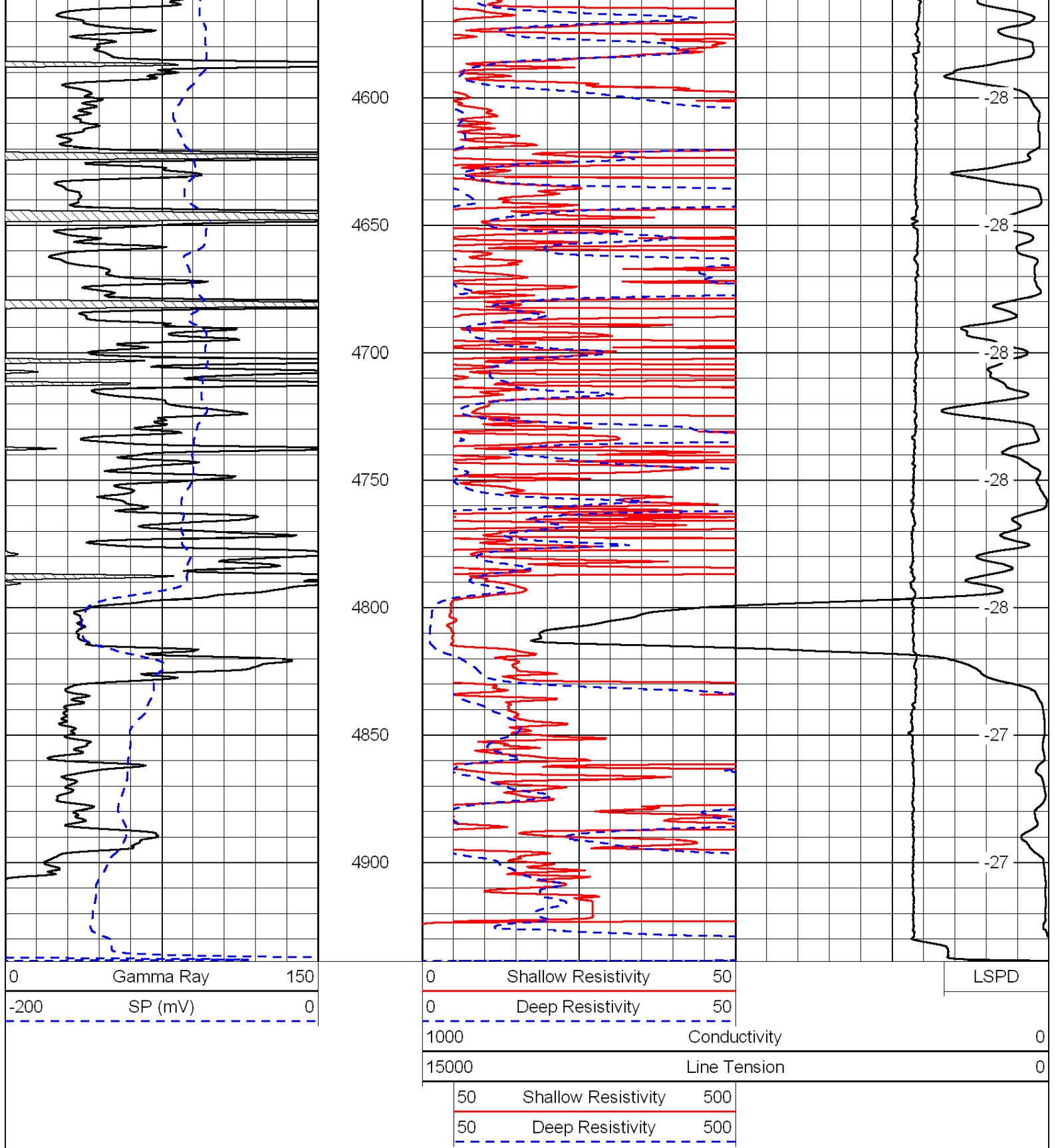




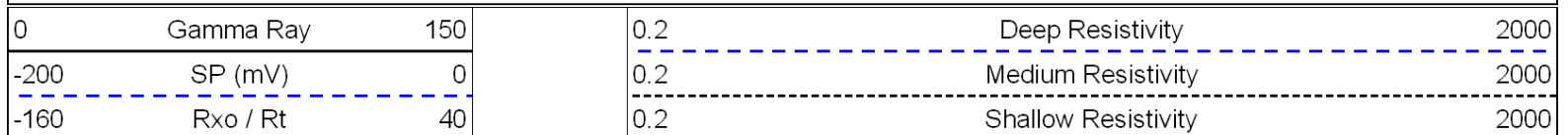


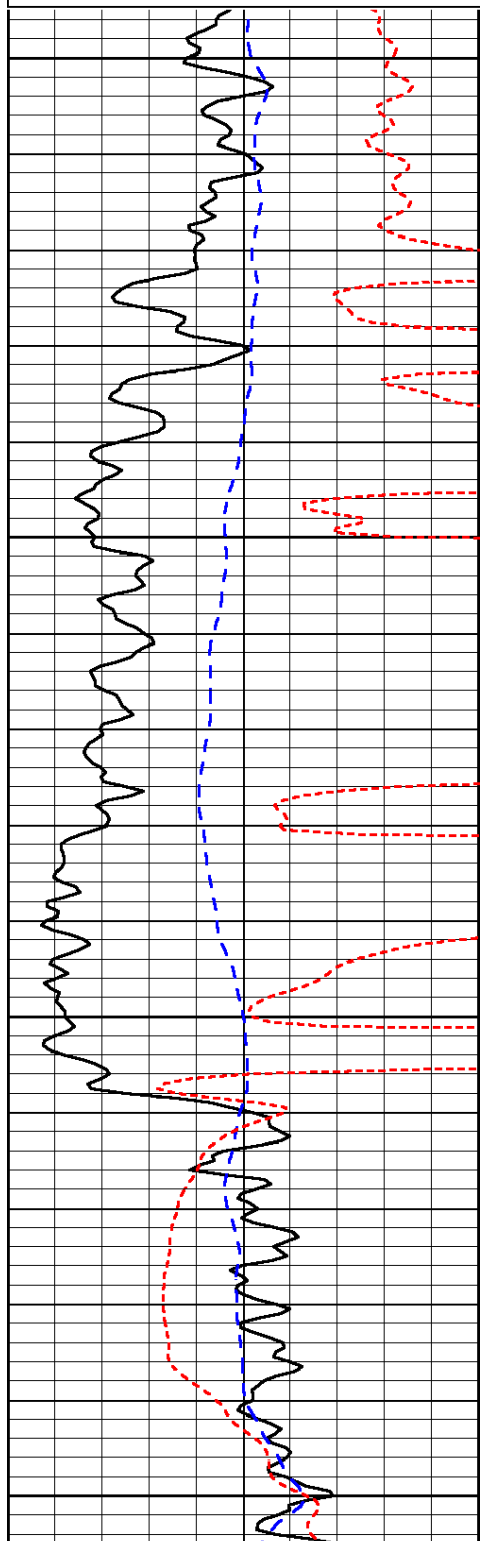






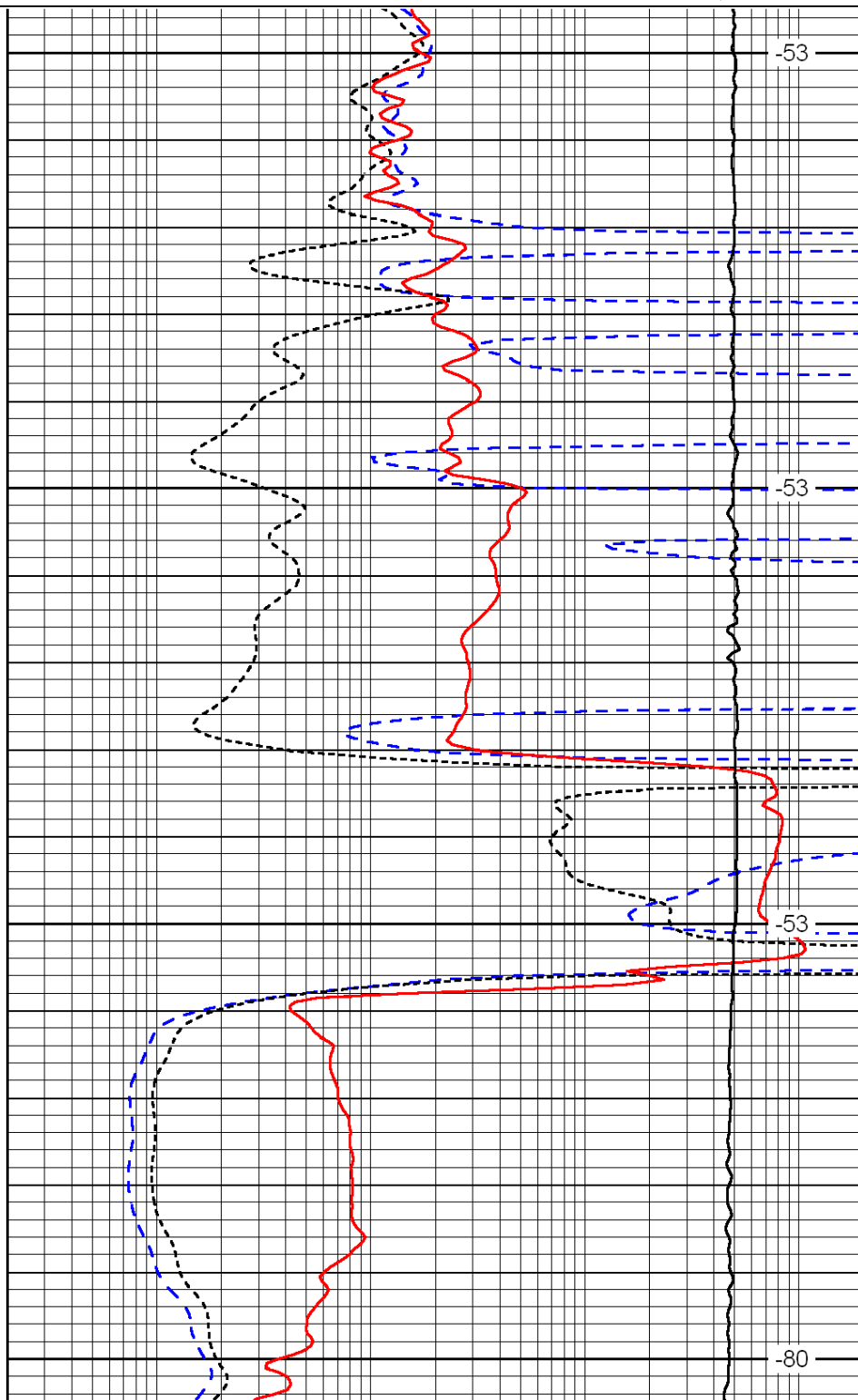
Database File: c:\warrior\data\credo_hartzfeld #1-22\credo052111hd.db
 Dataset Pathname: dil/credo2in
 Presentation Format: dil
 Dataset Creation: Sun May 22 00:32:23 2011
 Charted by: Depth in Feet scaled 1:240





2700
2750
2800
2850

0	Gamma Ray	150
-200	SP (mV)	0
-160	Rxo / Rt	40



-53
-53
-53
-80

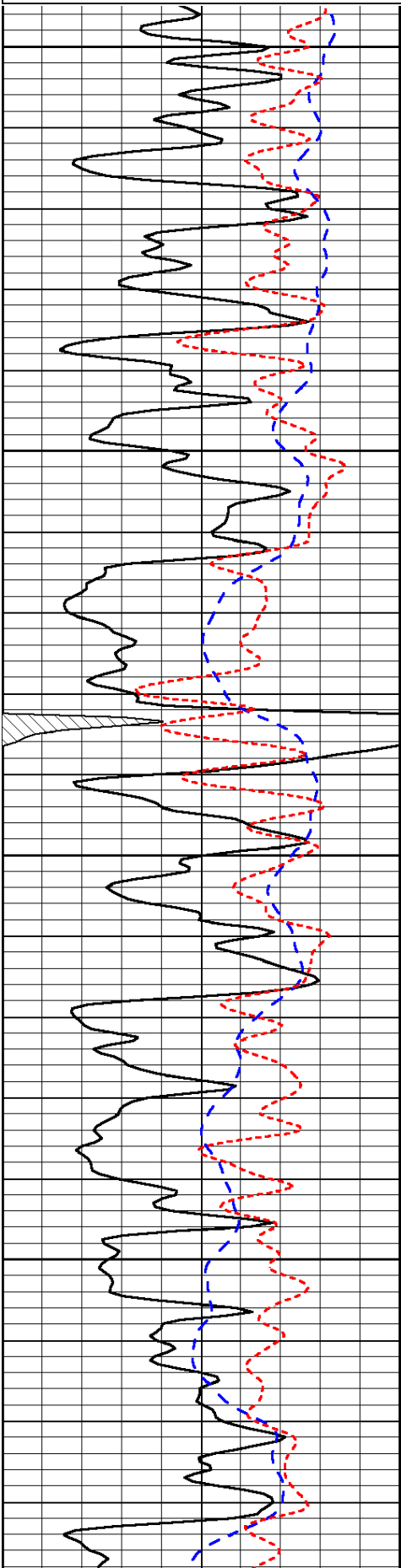
0.2	Deep Resistivity	2000
0.2	Medium Resistivity	2000
0.2	Shallow Resistivity	2000
15000	Line Tension	0

Database File: c:\warrior\data\credo_hartzfeld #1-22\credo052111hd.db
 Dataset Pathname: dil/credo2in
 Presentation Format: dil
 Dataset Creation: Sun May 22 00:32:23 2011
 Charted by: Depth in Feet scaled 1:240

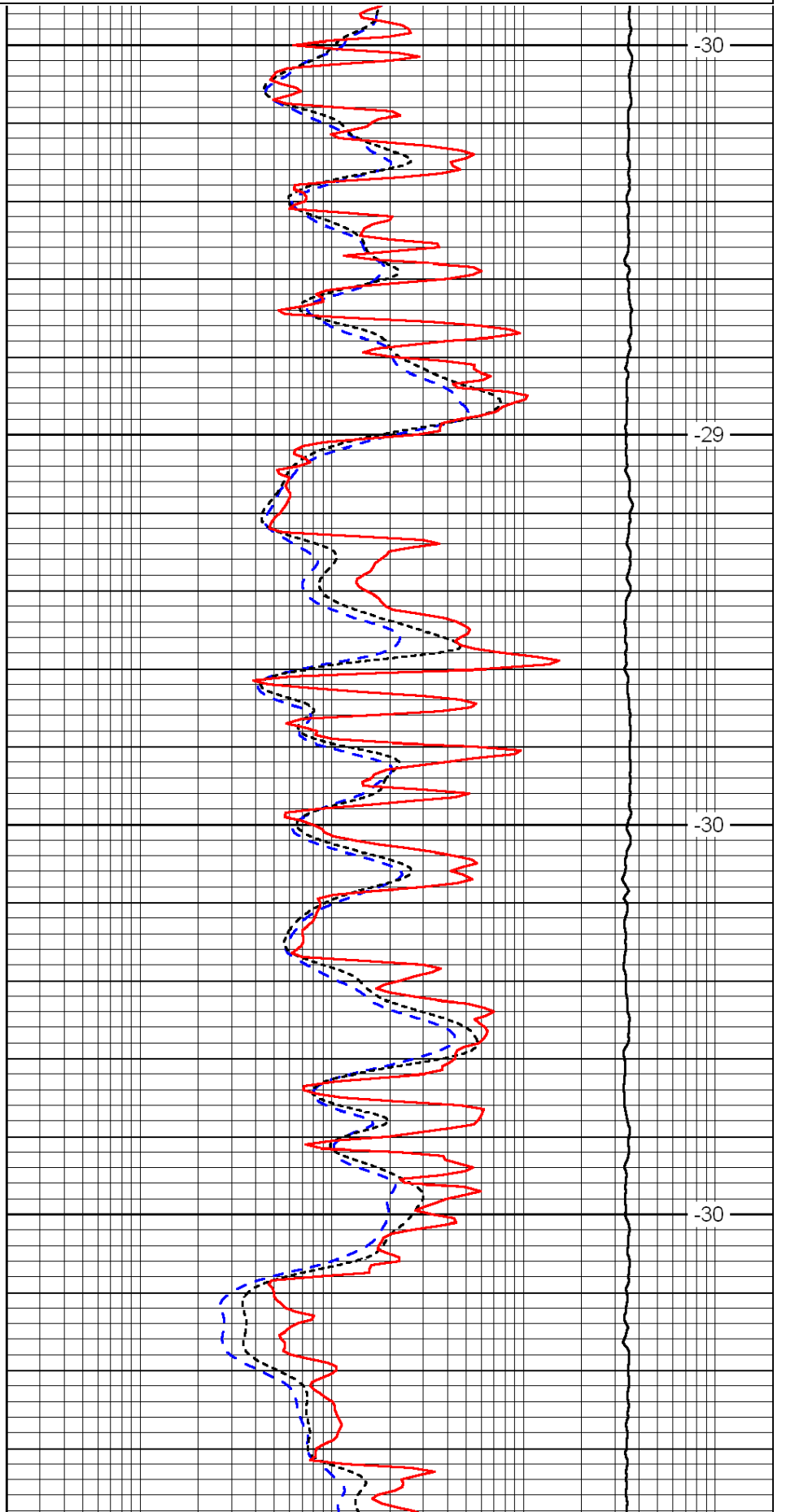
0	Gamma Ray	150
-200	SP (mV)	0
-160	Rxo / Rt	40

0.2	Deep Resistivity	2000
0.2	Medium Resistivity	2000
0.2	Shallow Resistivity	2000
15000	Line Tension	0

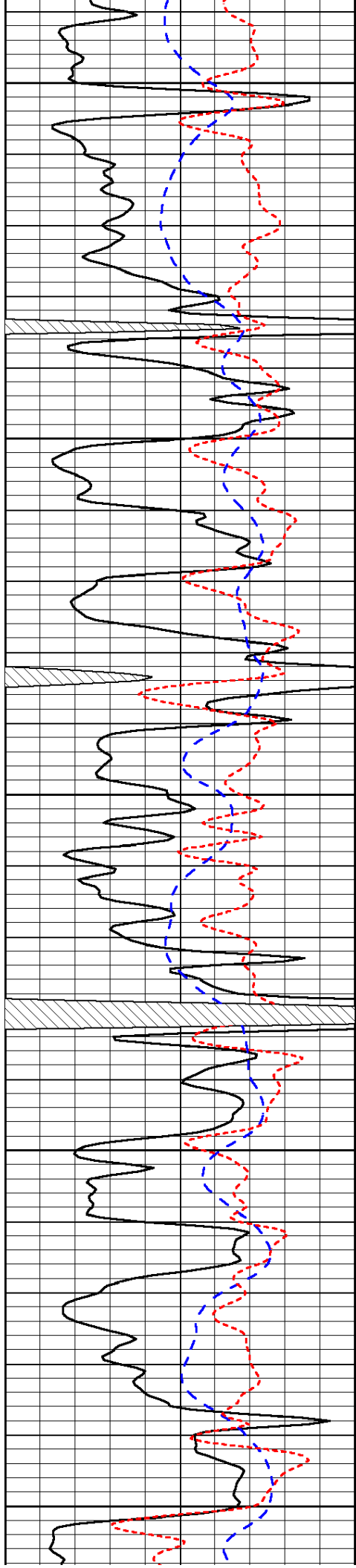
LSPD



3800
3850
3900
3950



-30
-29
-30
-30



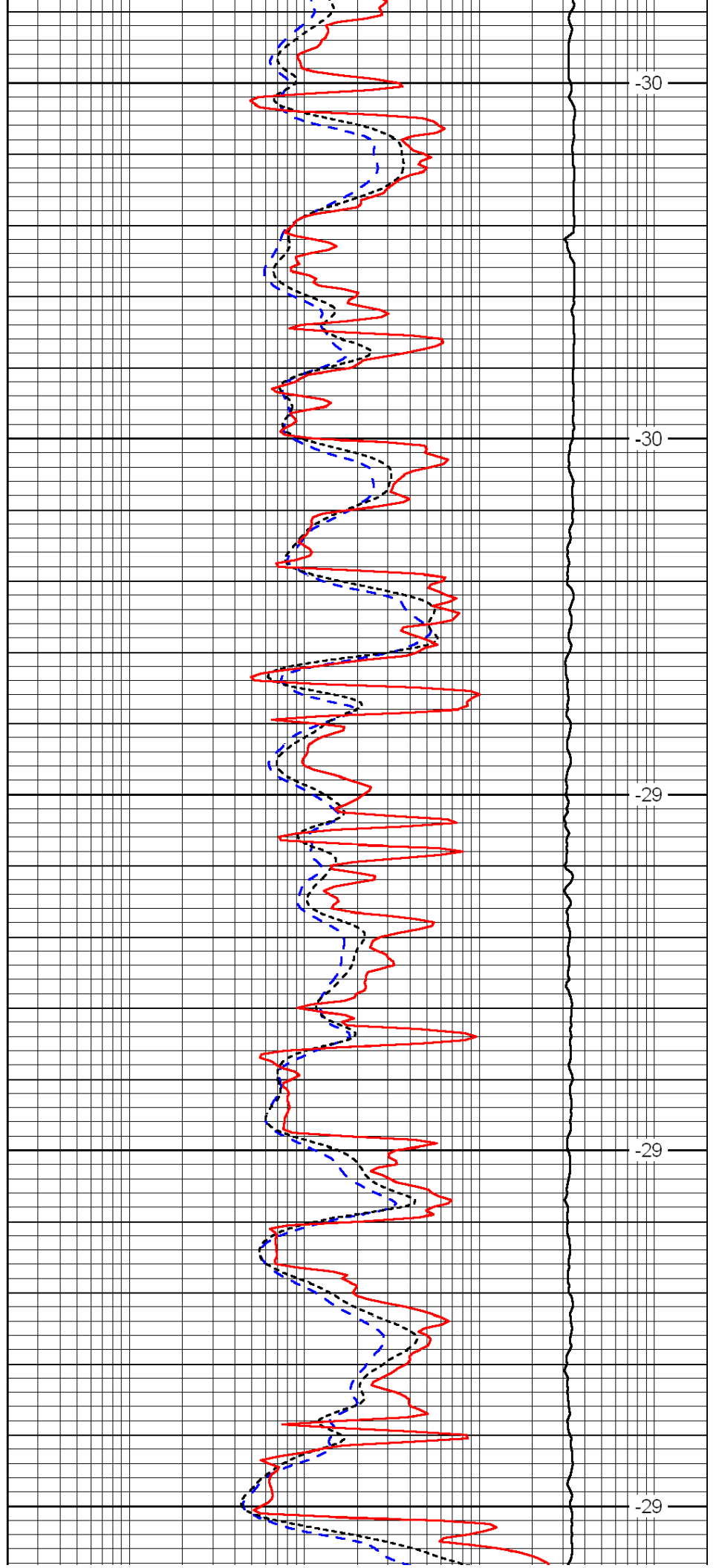
4000

4050

4100

4150

4200



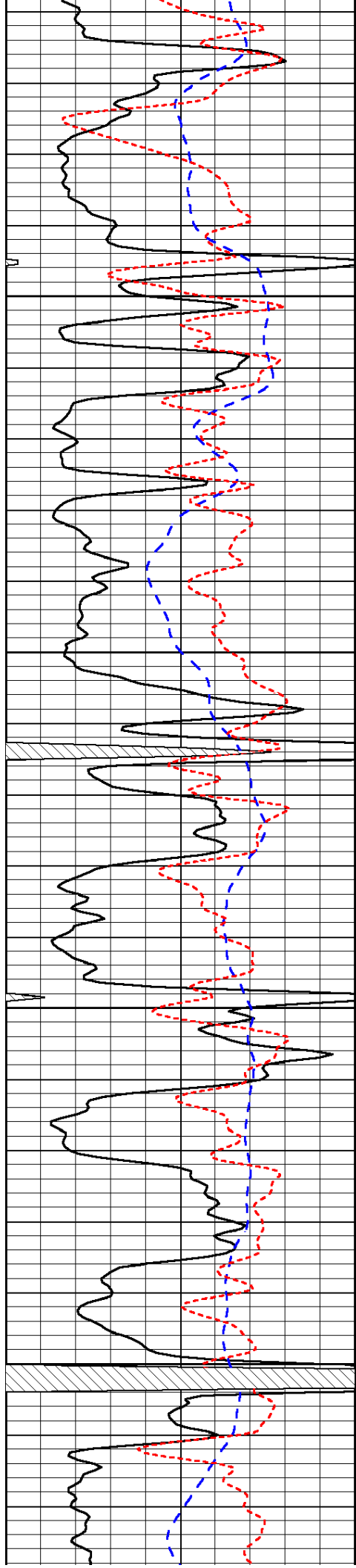
-30

-30

-29

-29

-29

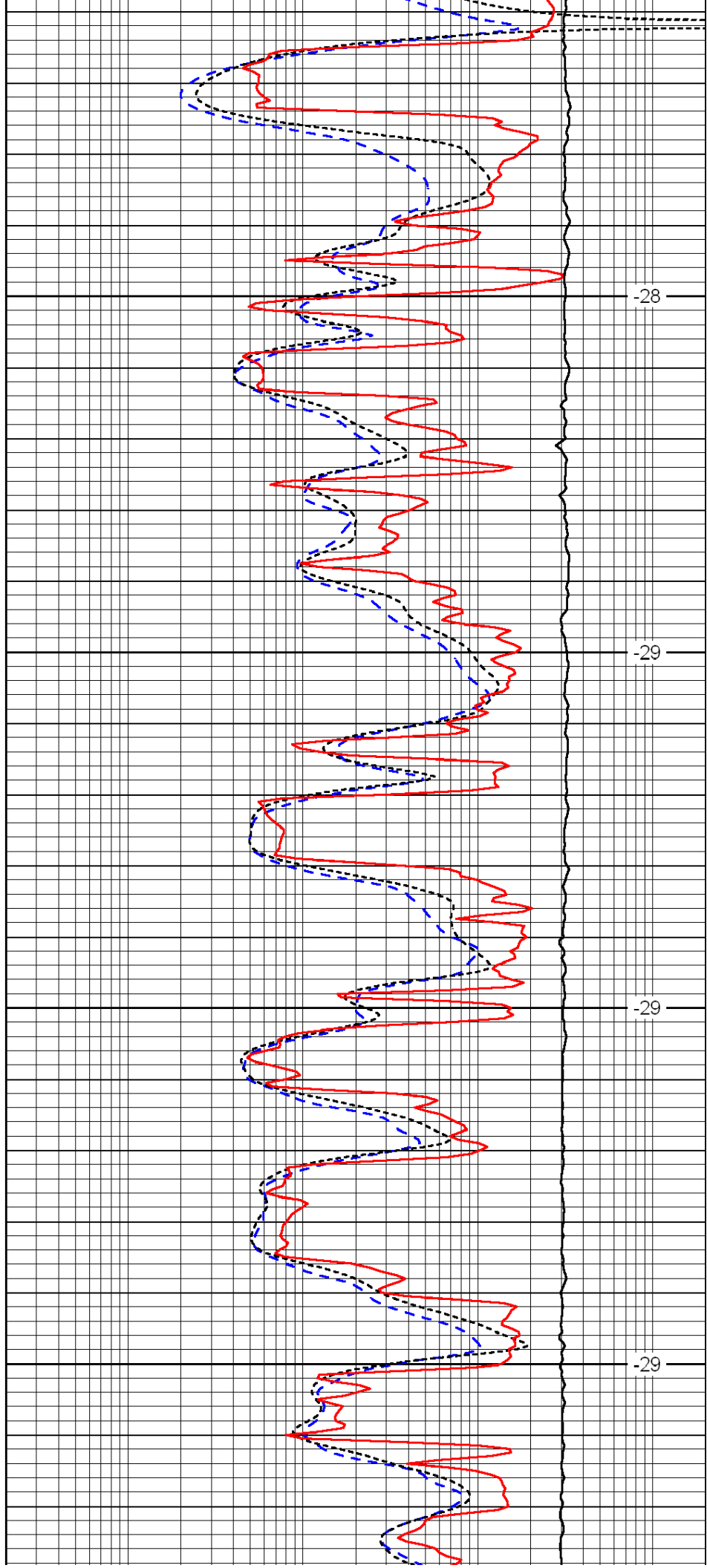


4250

4300

4350

4400

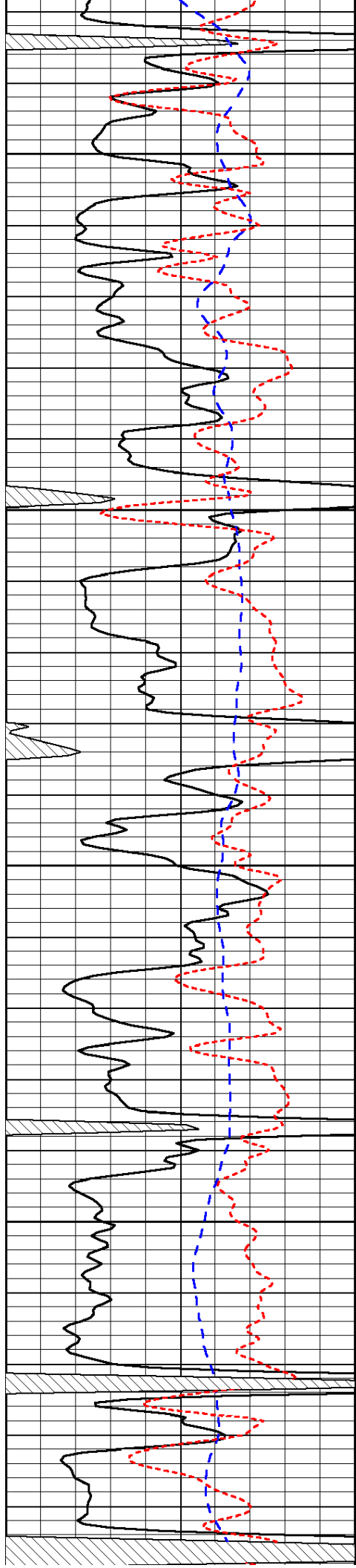


-28

-29

-29

-29

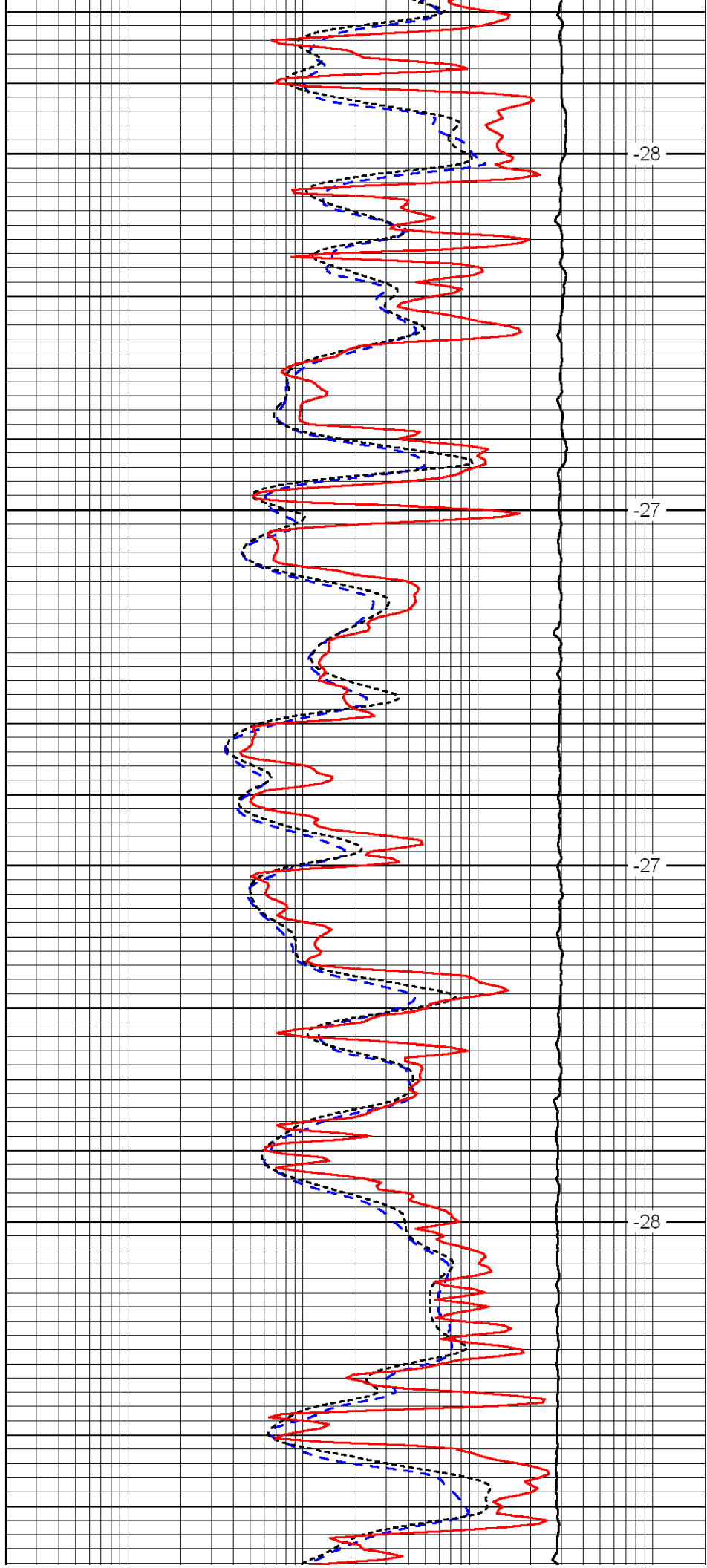


4450

4500

4550

4600

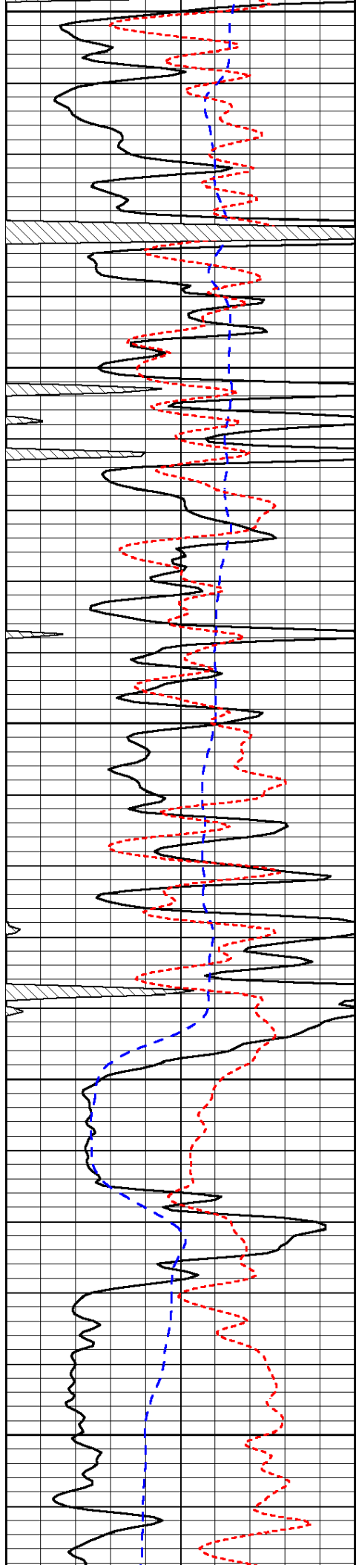


-28

-27

-27

-28



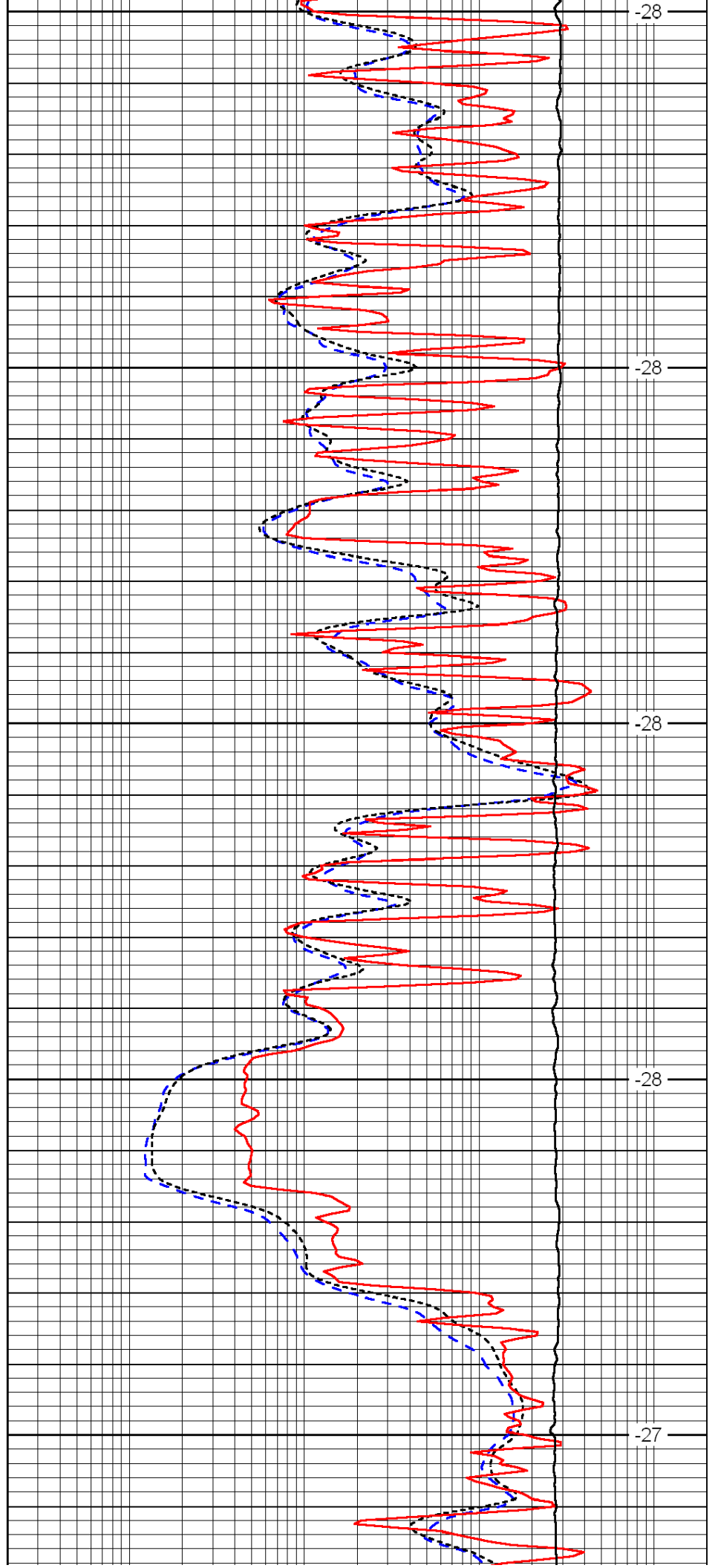
4650

4700

4750

4800

4850



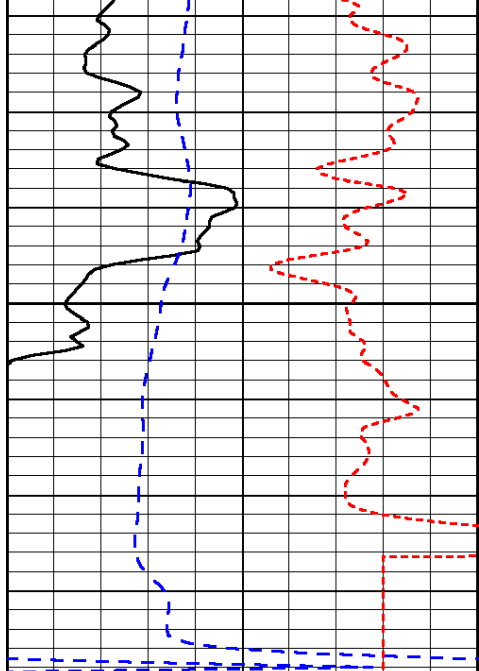
-28

-28

-28

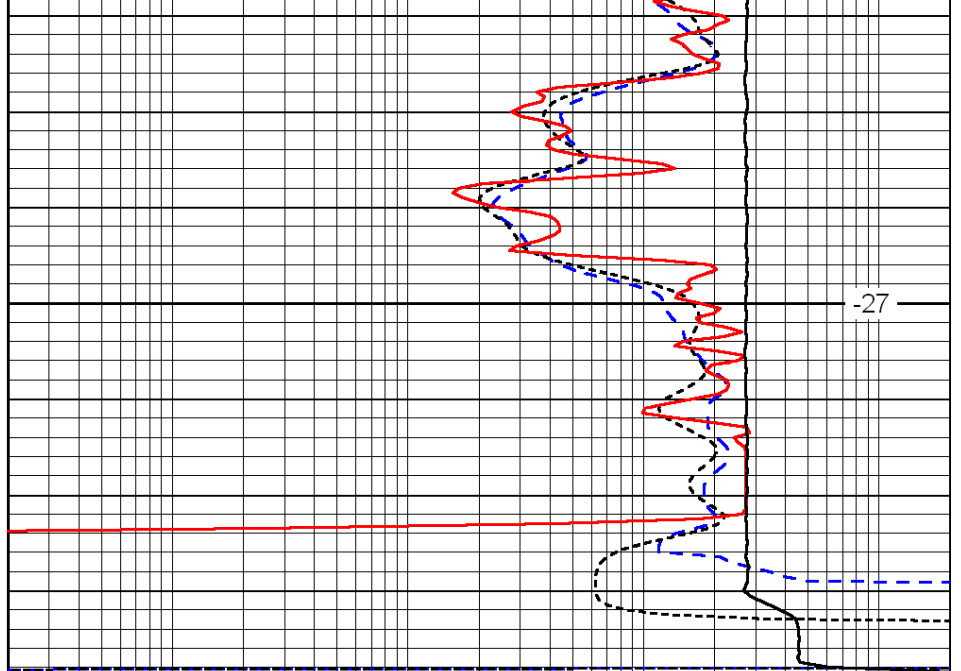
-28

-27



0	Gamma Ray	150
-200	SP (mV)	0
-160	Rxo / Rt	40

4900



-27

0.2	Deep Resistivity	2000
0.2	Medium Resistivity	2000
0.2	Shallow Resistivity	2000
15000	Line Tension	0

LSPD