



DIGITAL LOG (785) 625-3858

Dual Induction Log

| | | |
|----------------|--|--------------|
| API No. | 15-007-23,703-00-00 | |
| Company | Wildcat Oil & Gas, LLC | |
| Well | Liebl No. 5 | |
| Field | Landis | |
| County | Barber | State Kansas |
| Location | S2 N2 NE SW 3,190' FNL & 1,980' FWL | |
| Sec: 27 | Twp: 34 S | Rge: 11 W |
| Other Services | CNL/CDL | |

| | | |
|------------------------|---------------|--------------------------|
| Permanent Datum | Ground Level | Elevation 1316 |
| Log Measured From | Kelly Bushing | 10 Ft. Above Perm. Datum |
| Drilling Measured From | Kelly Bushing | |
| Date | 5/18/2011 | |
| Run Number | One | |
| Depth Driller | 4825 | |
| Depth Logger | 4825 | |
| Bottom Logged Interval | 4824 | |
| Top Log Interval | 200 | |
| Casing Driller | 8.625 @ 217 | |
| Casing Logger | 214 | |
| Bit Size | 8.625 | |
| Type Fluid in Hole | Chemical | |
| Salinity, ppm CL | 6000 | |
| Density / Viscosity | 9.5 | 48 |
| pH / Fluid Loss | 10.0 | 8.8 |
| Source of Sample | Flowline | |
| Rm @ Meas. Temp | .43 | @ 67 |
| Rmf @ Meas. Temp | .32 | @ 67 |
| Rmc @ Meas. Temp | .58 | @ 67 |
| Source of Rmf / Rmc | Charts | |
| Rm @ BHT | .23 | @ 124 |
| Operating Rig Time | 3 Hours | |
| Max Rec. Temp. F | 124 | |
| Equipment Number | 10 | |
| Location | Hays | |
| Recorded By | Jim Schuler | |
| Witnessed By | Tim Pierce | |

<<< Fold Here >>>

All interpretations are opinions based on inferences from electrical or other measurements and we cannot and do not guarantee the accuracy or correctness of any interpretation, and we shall not, except in the case of gross or willful negligence on our part, be liable or responsible for any loss, costs, damages, or expenses incurred or sustained by anyone resulting from any interpretation made by any of our officers, agents or employees. These interpretations are also subject to our general terms and conditions set out in our current Price Schedule.

Comments

Thank you for using Log-Tech, Inc.
(785) 625-3858

Medicine Lodge, Kansas, 16 Miles South to Rattlesnake Trail,
3 Miles East to Red Dust Road, 1/2 Mile North, East Into

Database File: c:\warrior\data\wildcat_liebl no. 5\wildcat_liebl_5hd.db
 Dataset Pathname: DIL\wcstk
 Presentation Format: dil2in
 Dataset Creation: Thu May 19 02:12:35 2011
 Charted by: Depth in Feet scaled 1:600

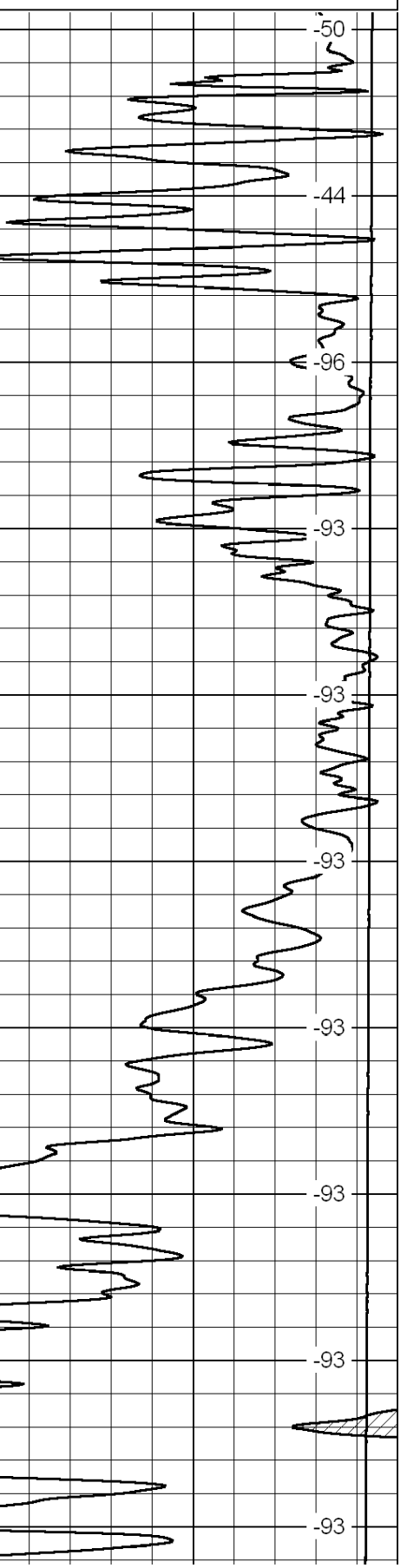
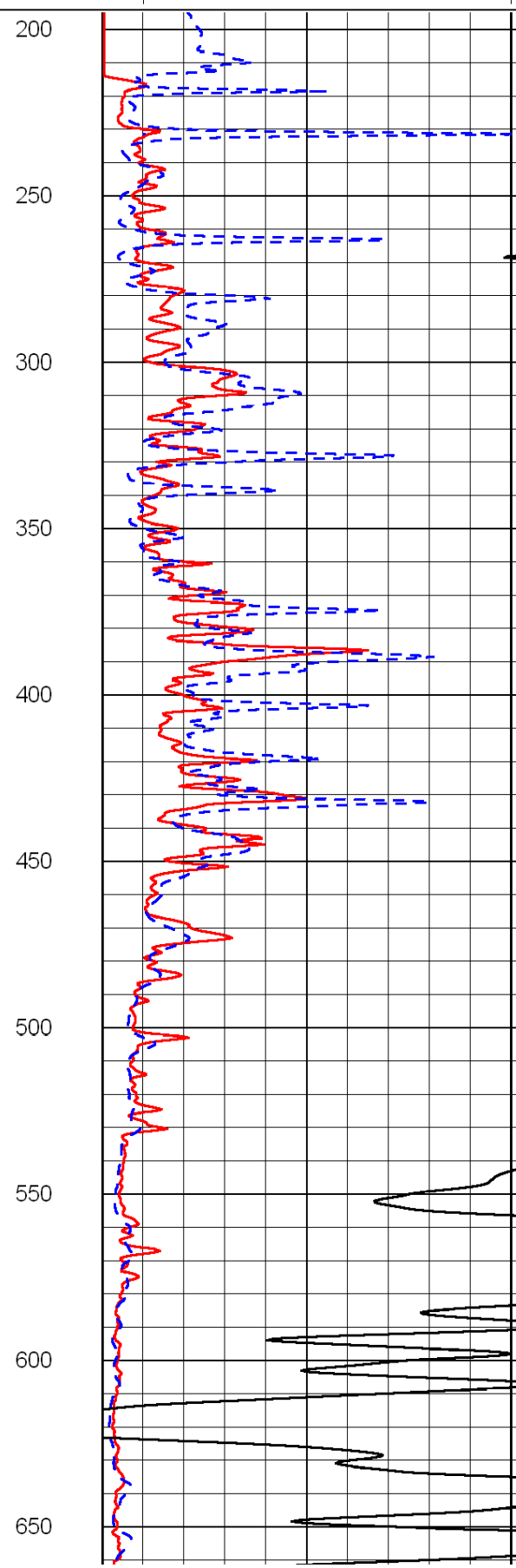
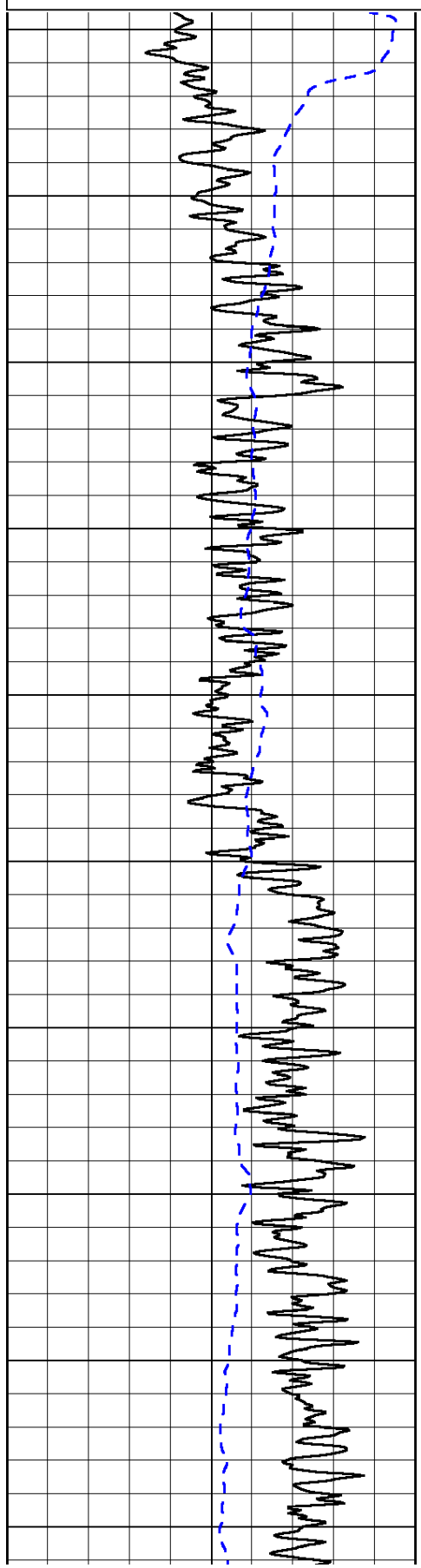
| | | |
|------|-----------|-----|
| 0 | Gamma Ray | 150 |
| -200 | SP (mV) | 0 |

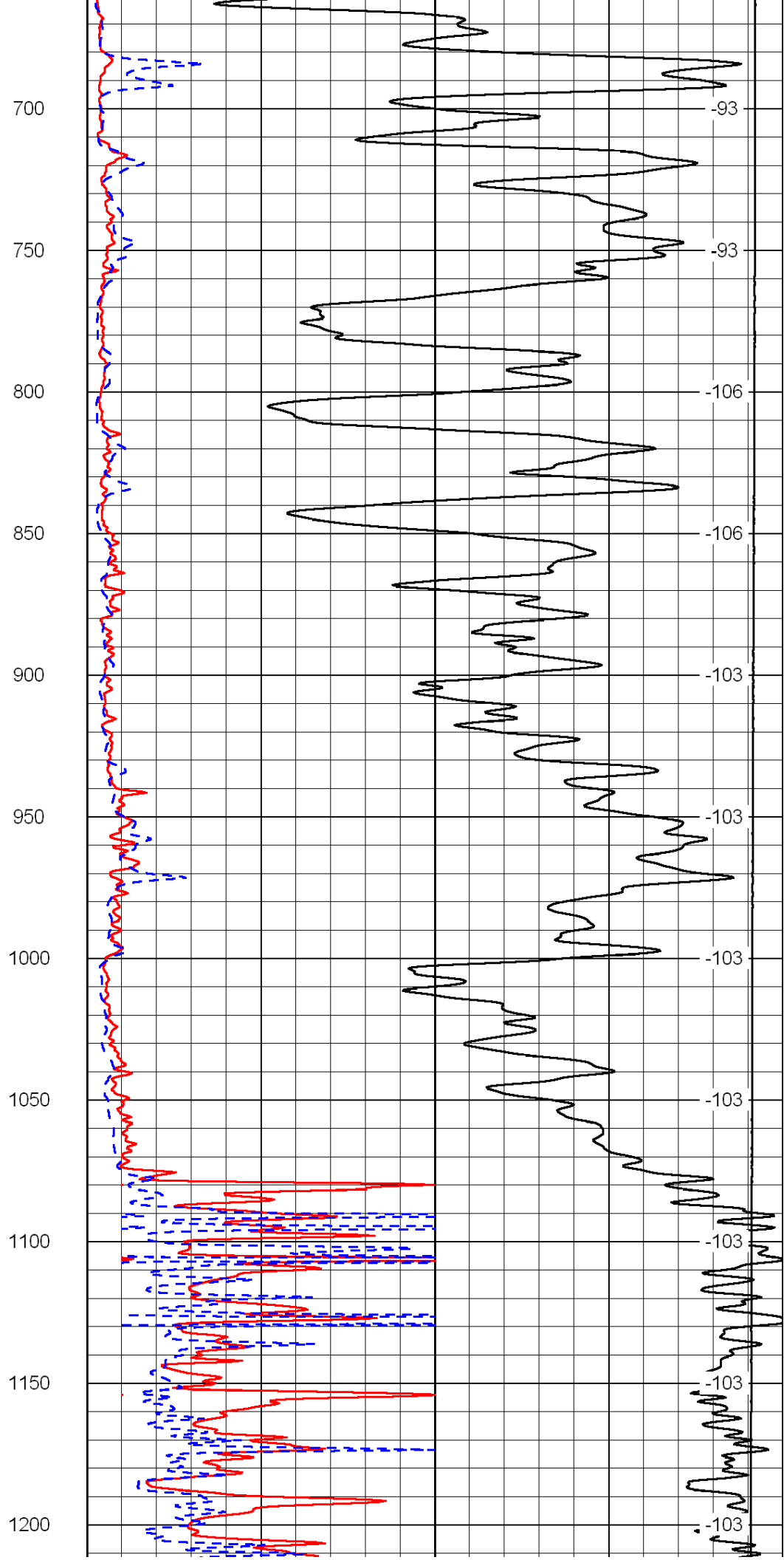
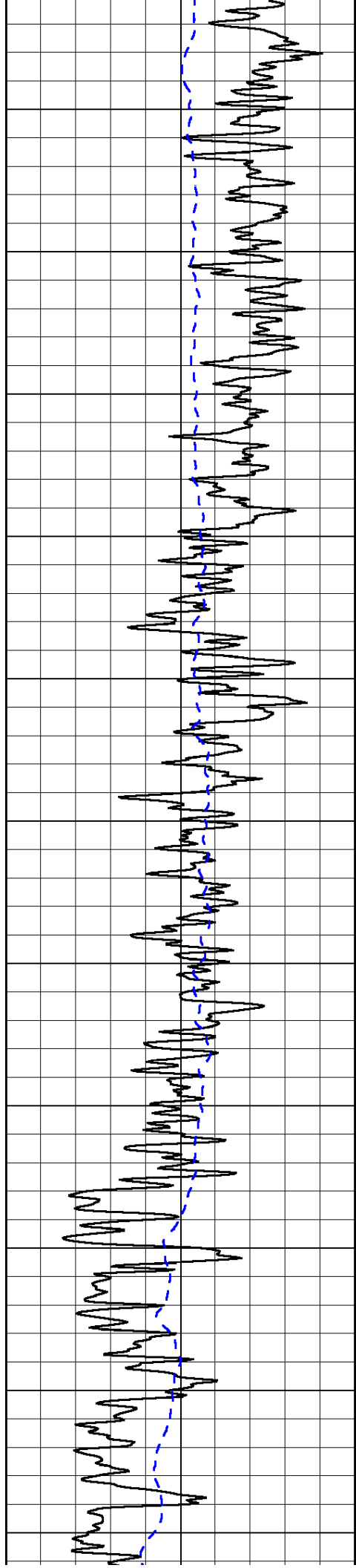
| | | |
|---|---------------------|----|
| 0 | Shallow Resistivity | 50 |
| 0 | Deep Resistivity | 50 |

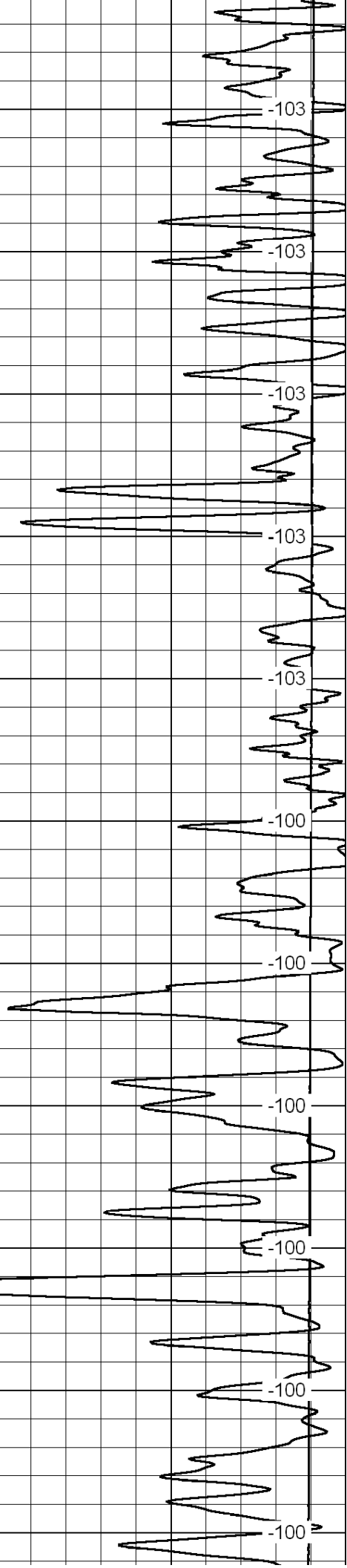
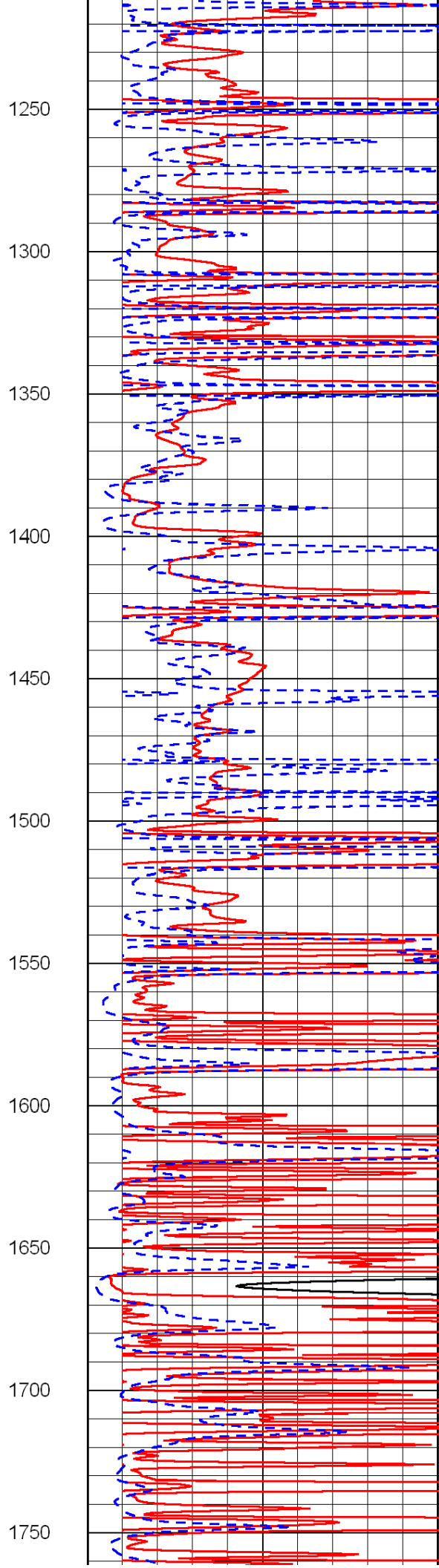
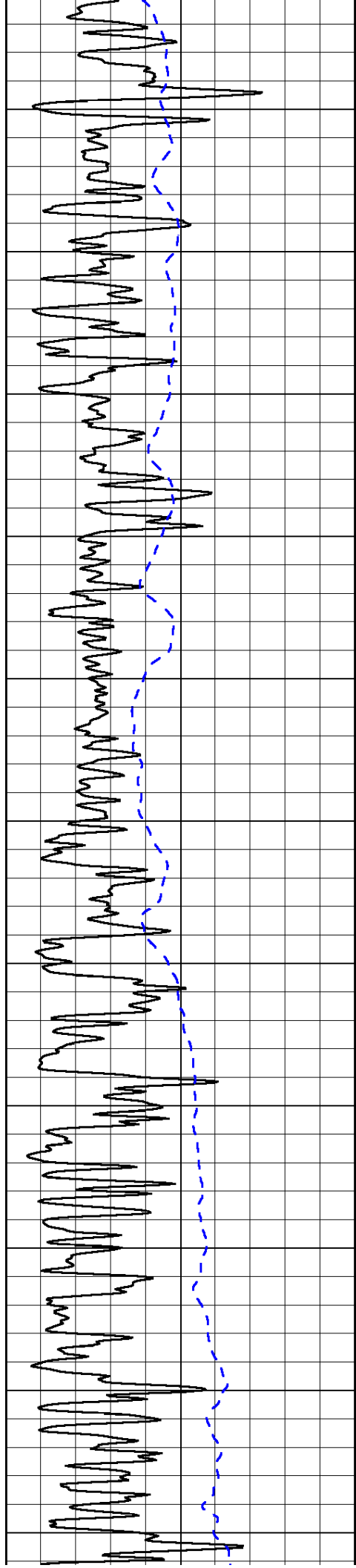
LSPD

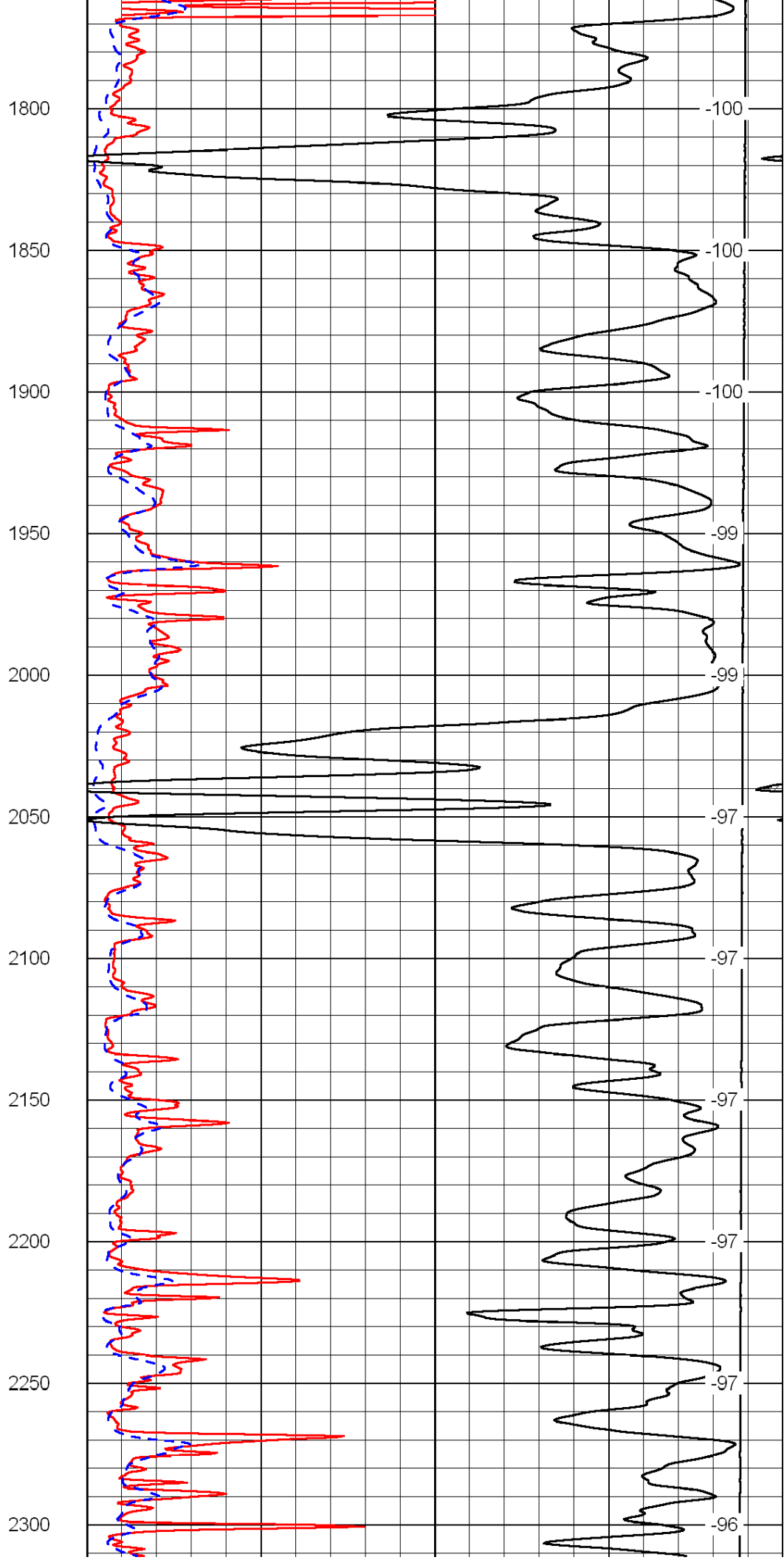
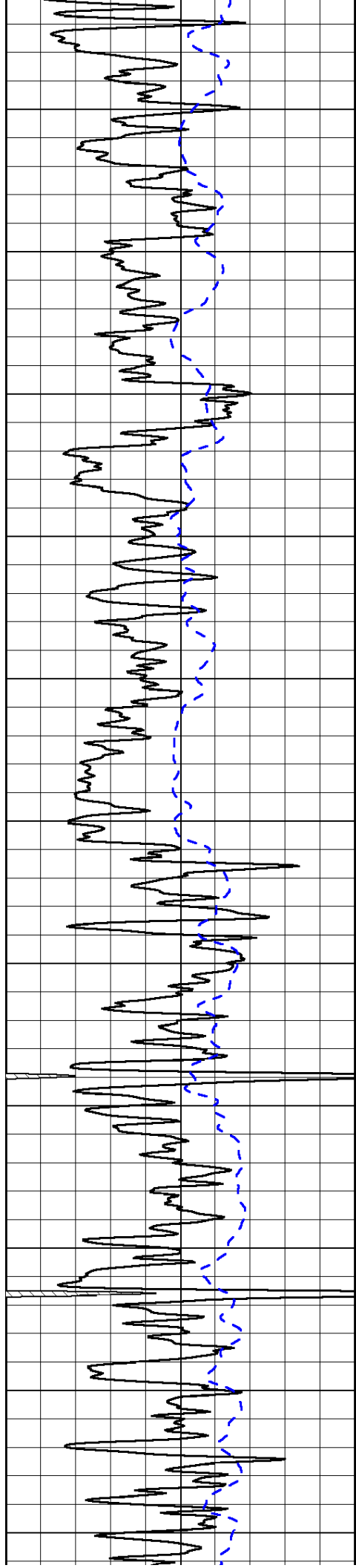
| | | |
|-------|--------------|---|
| 1000 | Conductivity | 0 |
| 15000 | Line Tension | 0 |

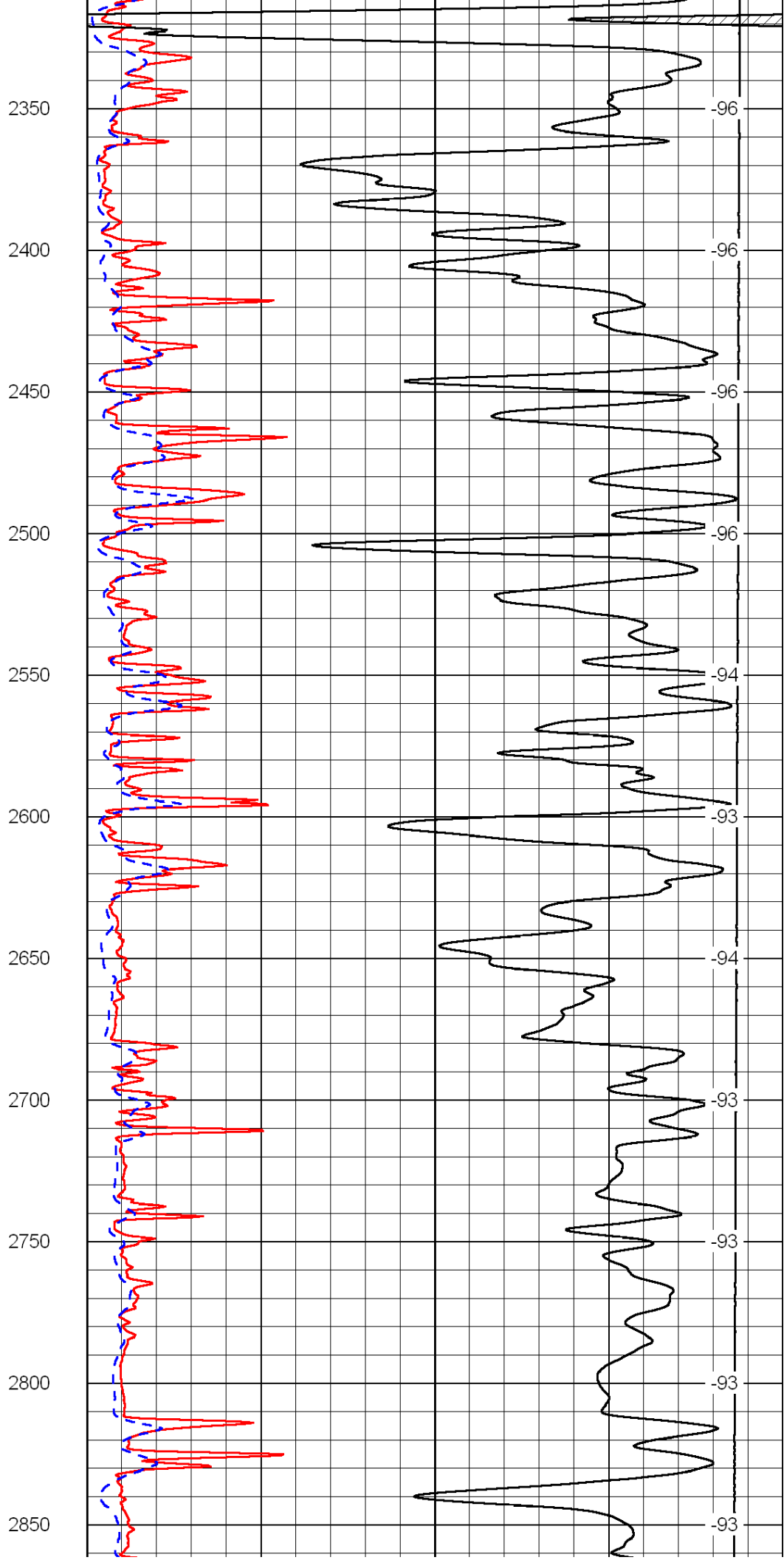
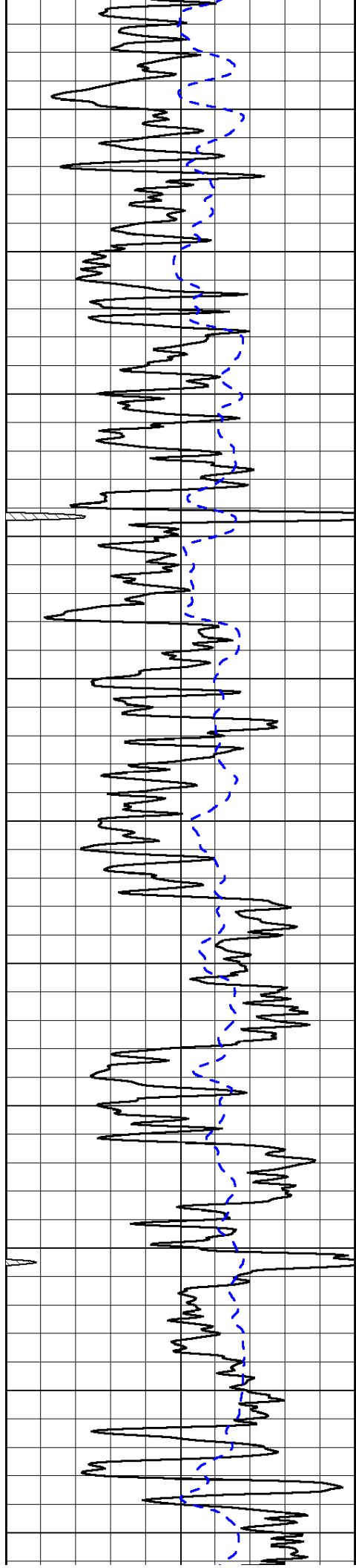
| | | |
|----|---------------------|-----|
| 50 | Shallow Resistivity | 500 |
| 50 | Deep Resistivity | 500 |

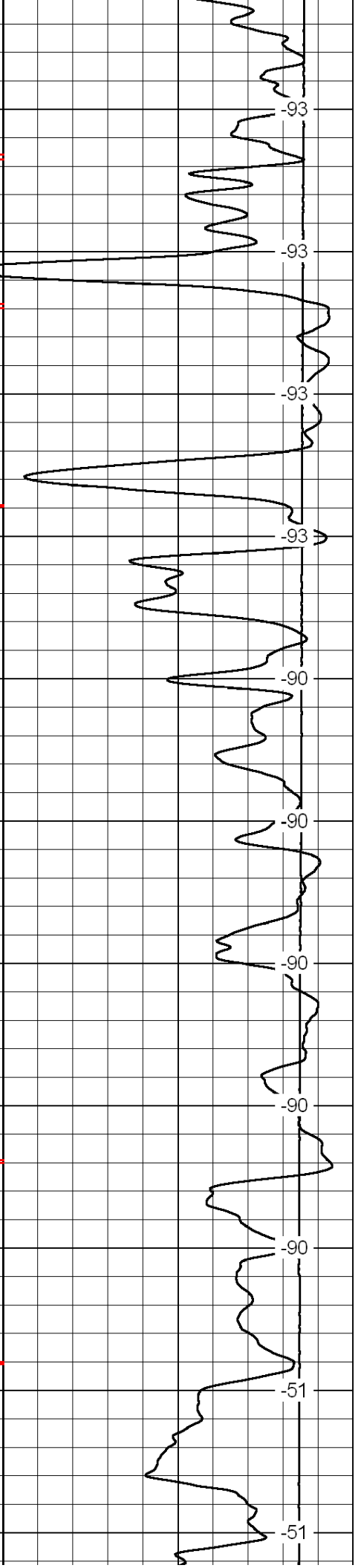
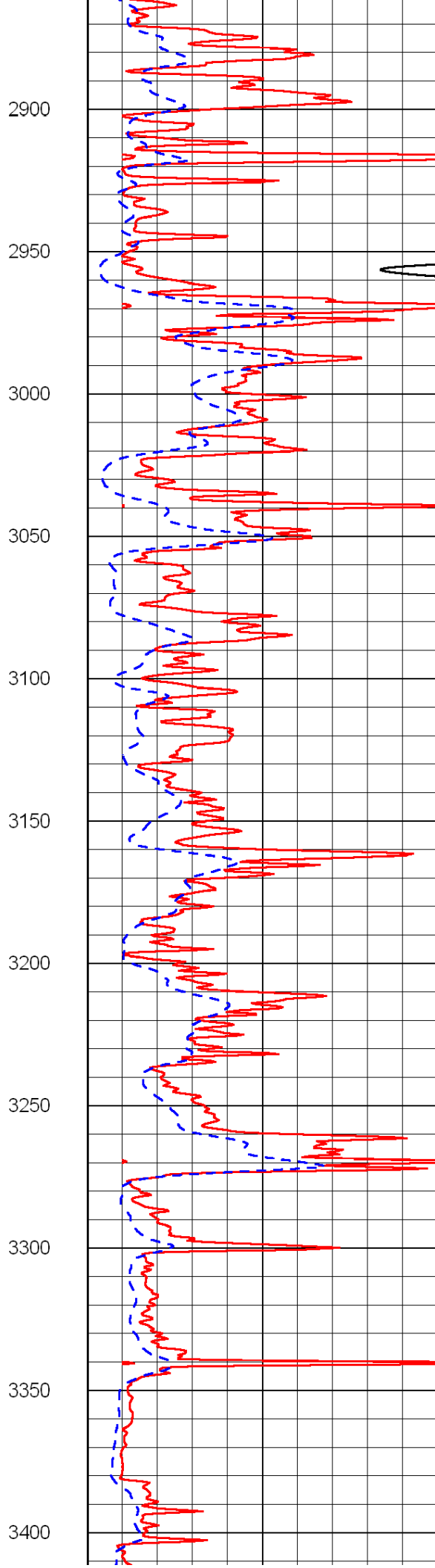
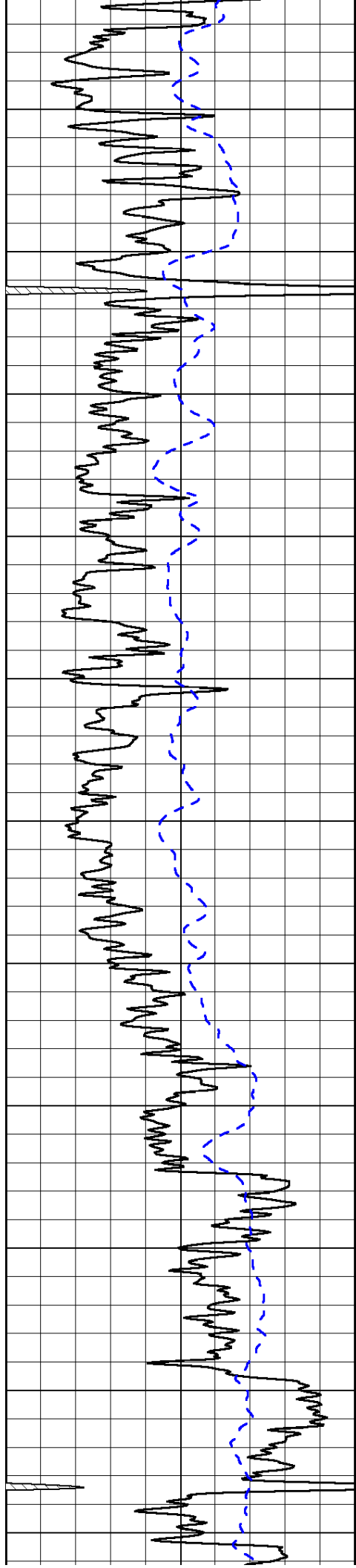


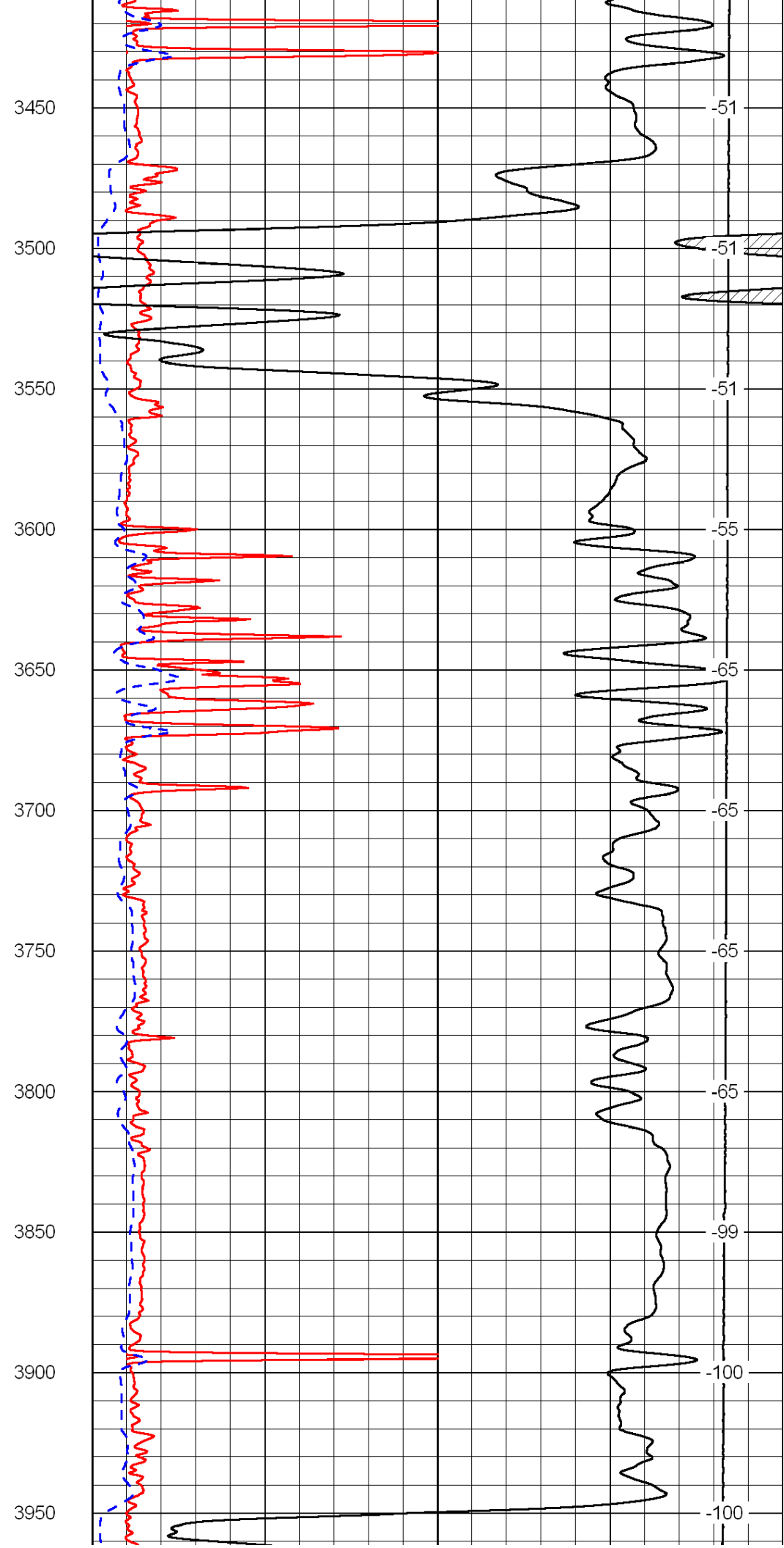
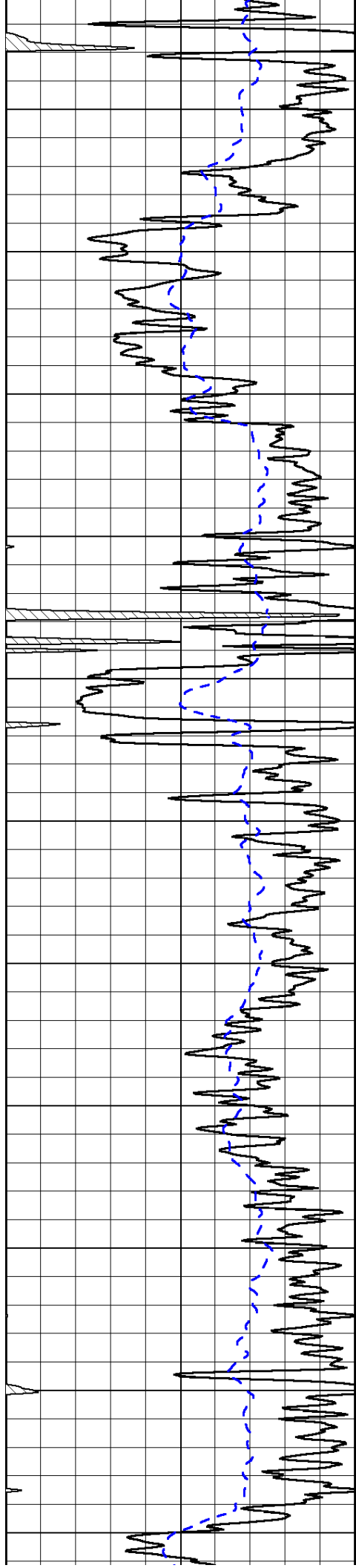


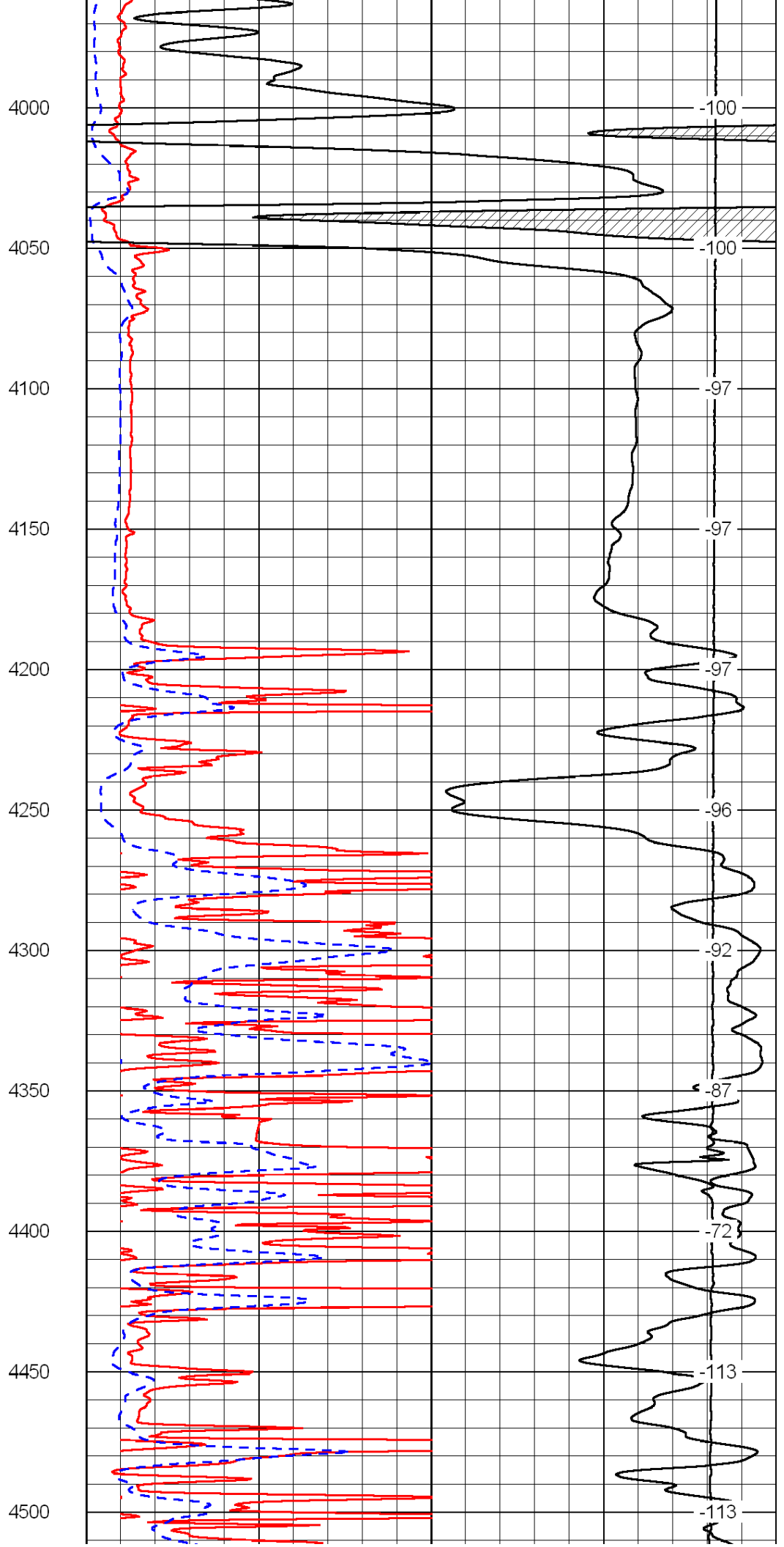
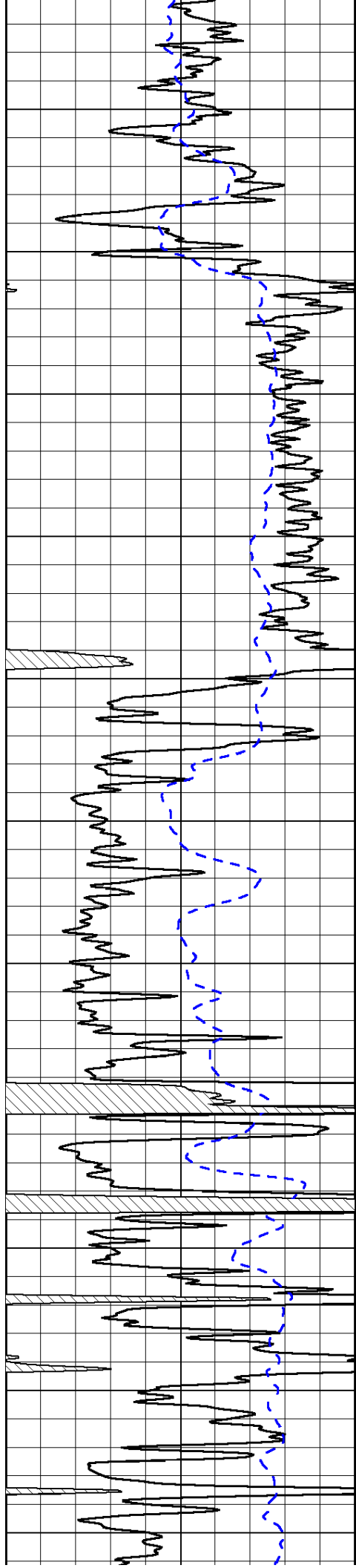


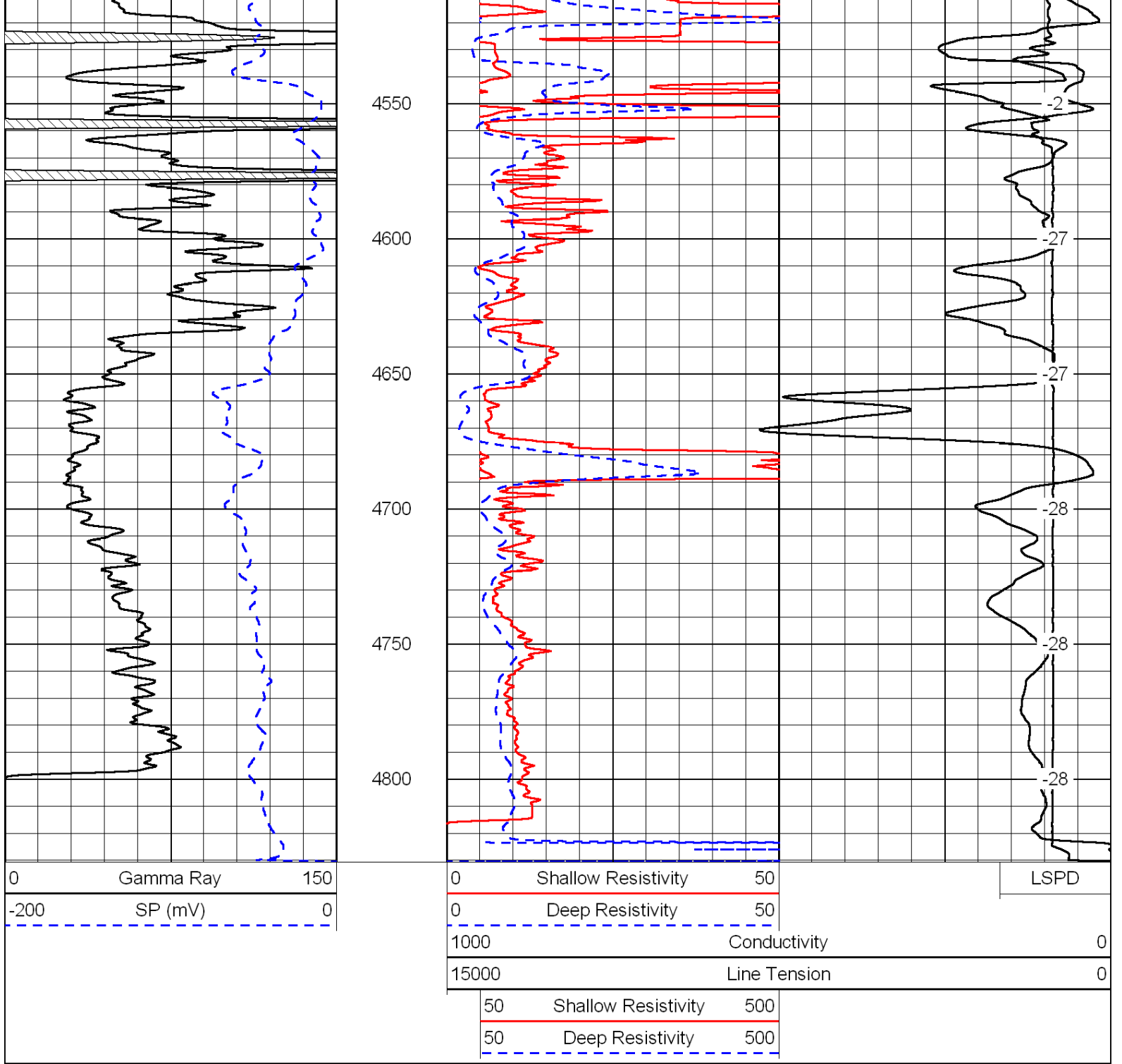




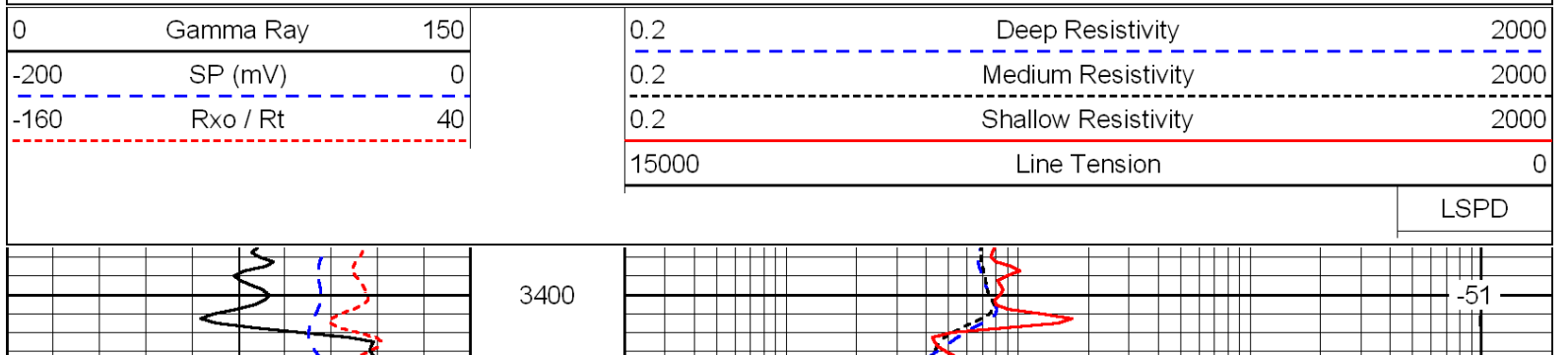


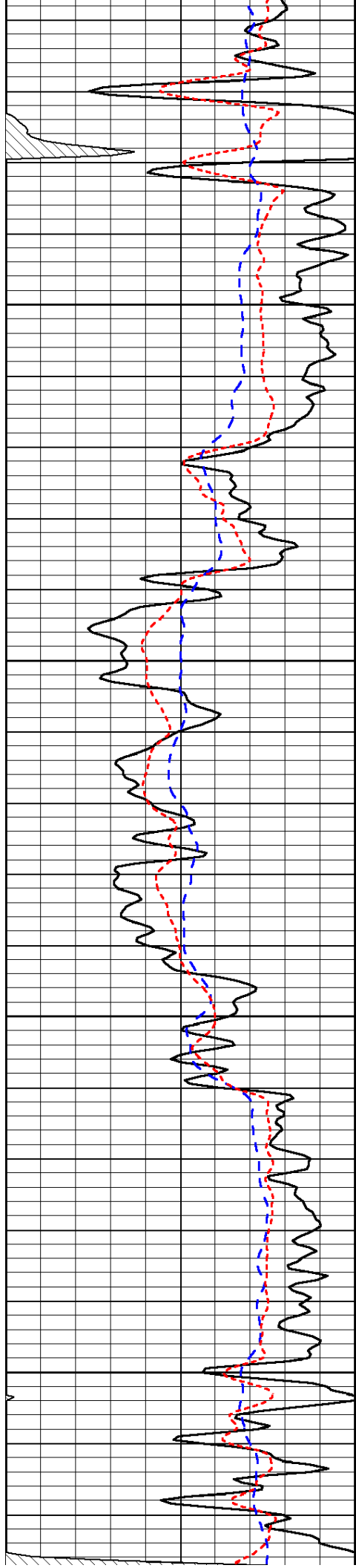






Database File: c:\warrior\data\wildcat_liebl no. 5\wildcat_liebl_5hd.db
 Dataset Pathname: DIL/wcstk
 Presentation Format: dil
 Dataset Creation: Thu May 19 02:12:35 2011
 Charted by: Depth in Feet scaled 1:240



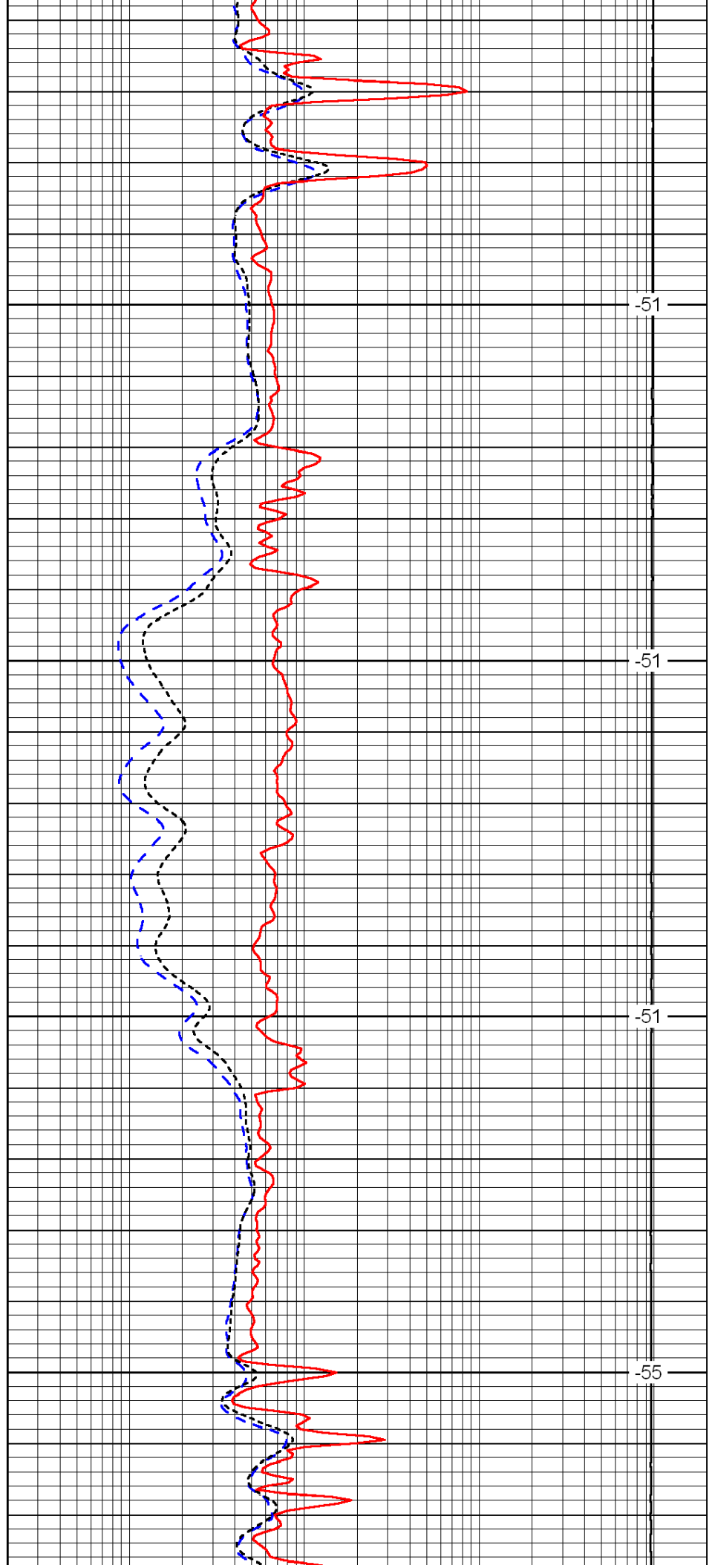


3450

3500

3550

3600

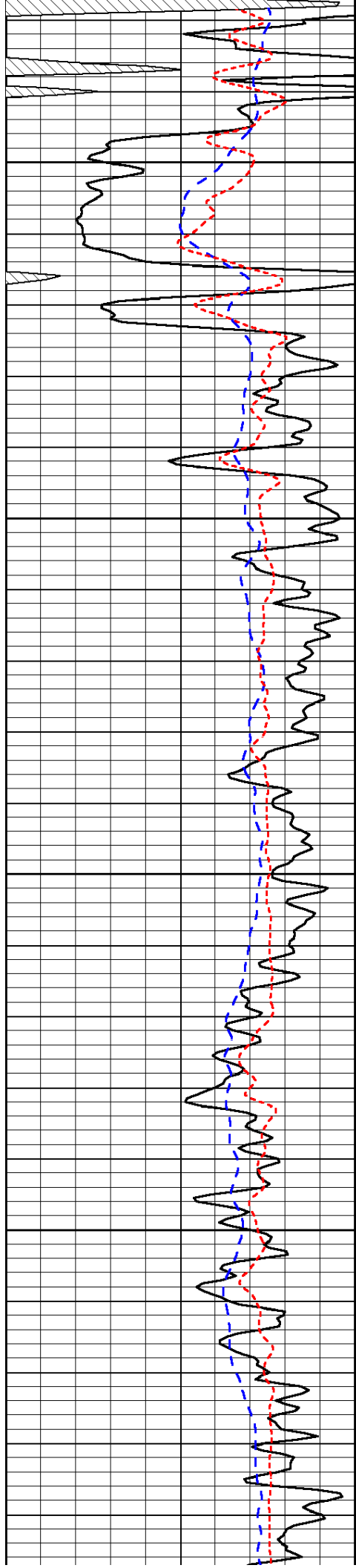


-51

-51

-51

-55

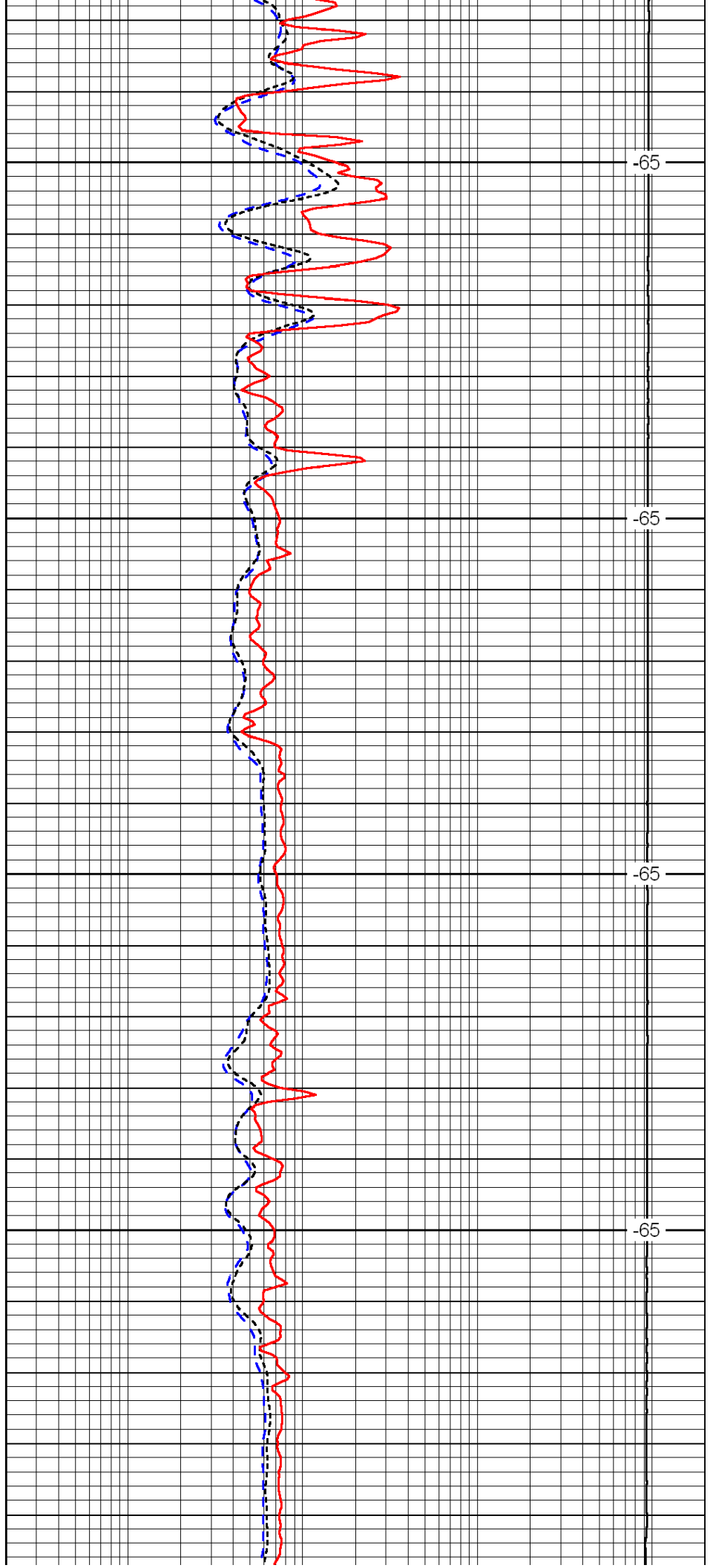


3650

3700

3750

3800

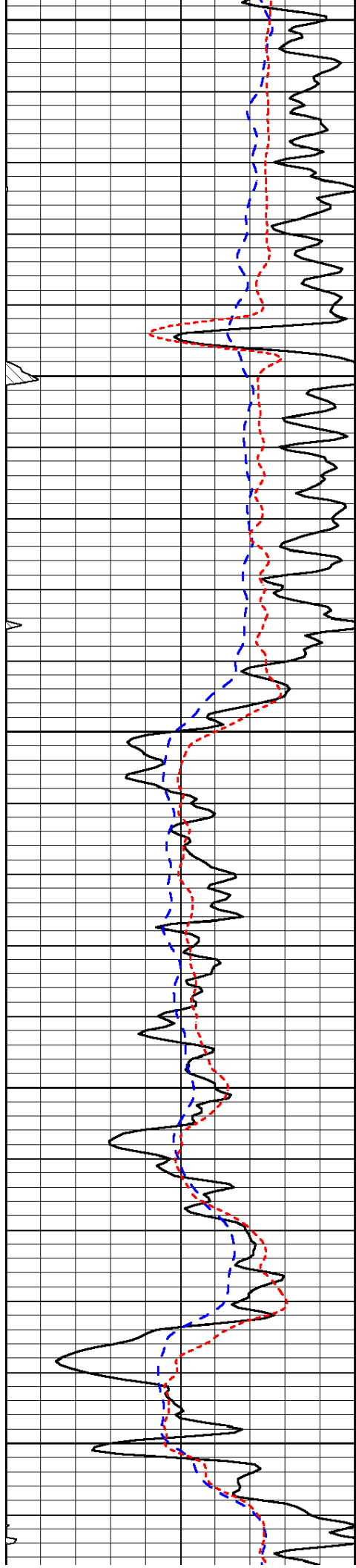


-65

-65

-65

-65



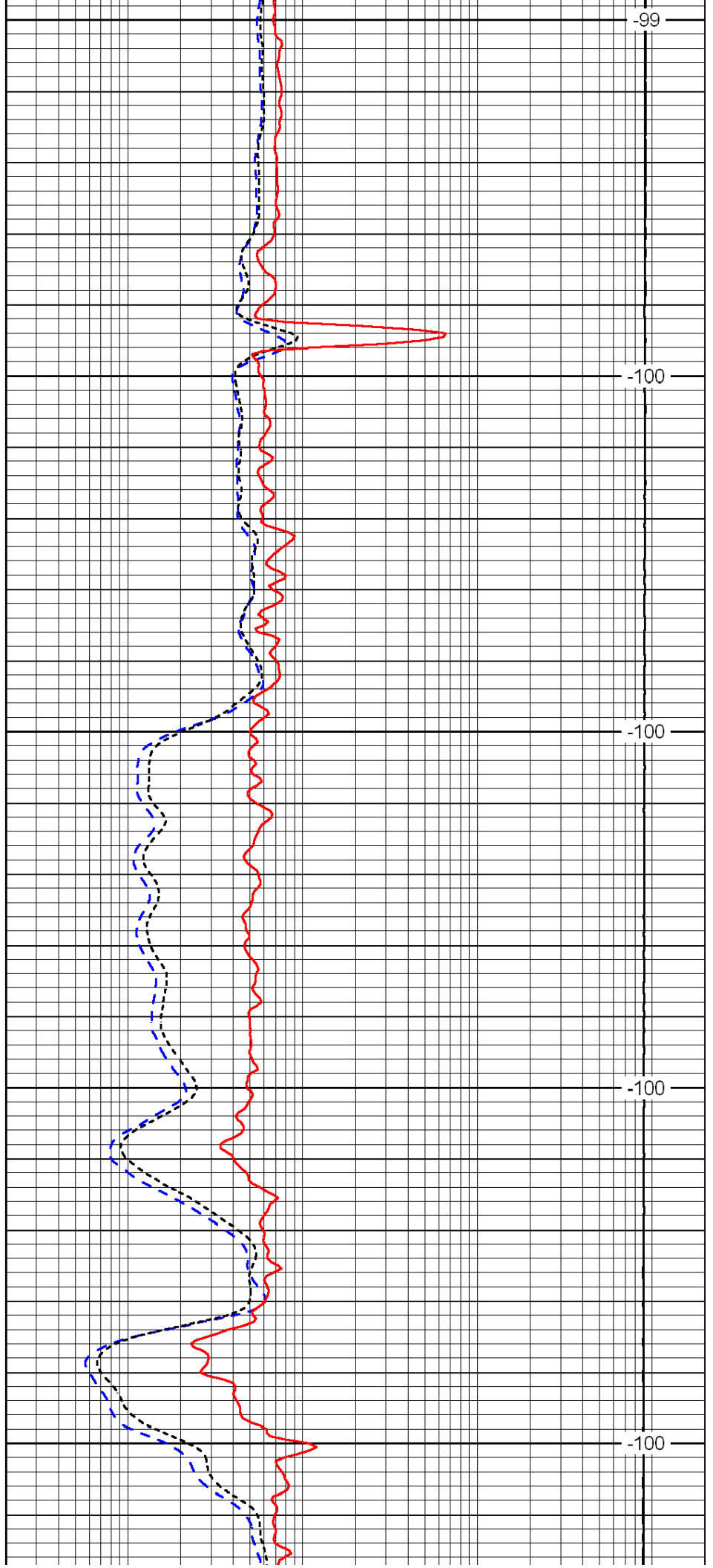
3850

3900

3950

4000

4050



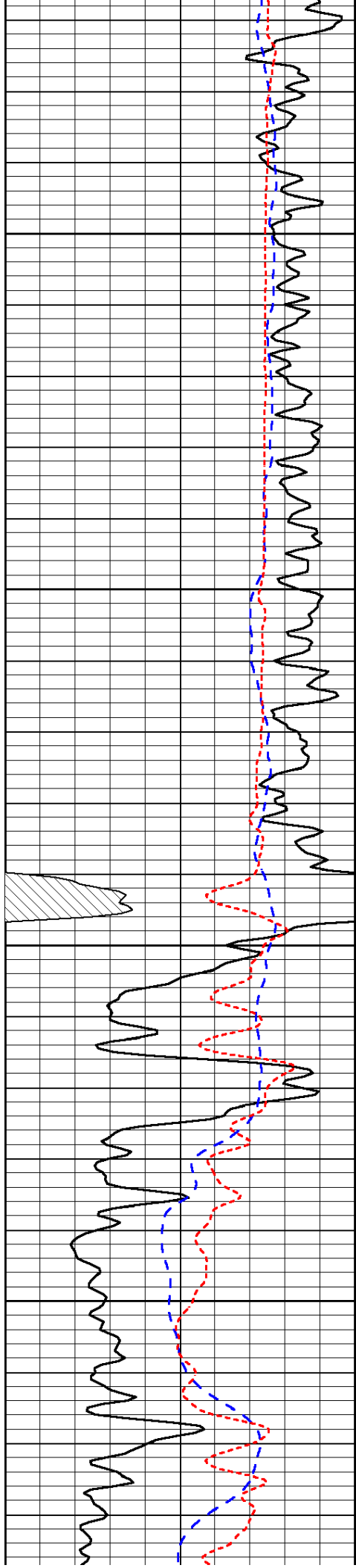
-99

-100

-100

-100

-100



4100

4150

4200

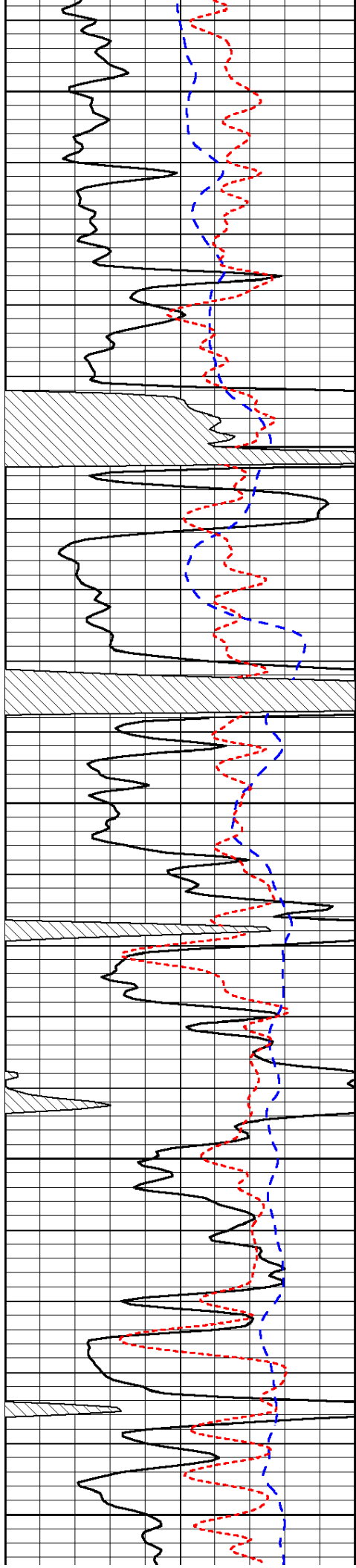
4250

-97

-97

-97

-96



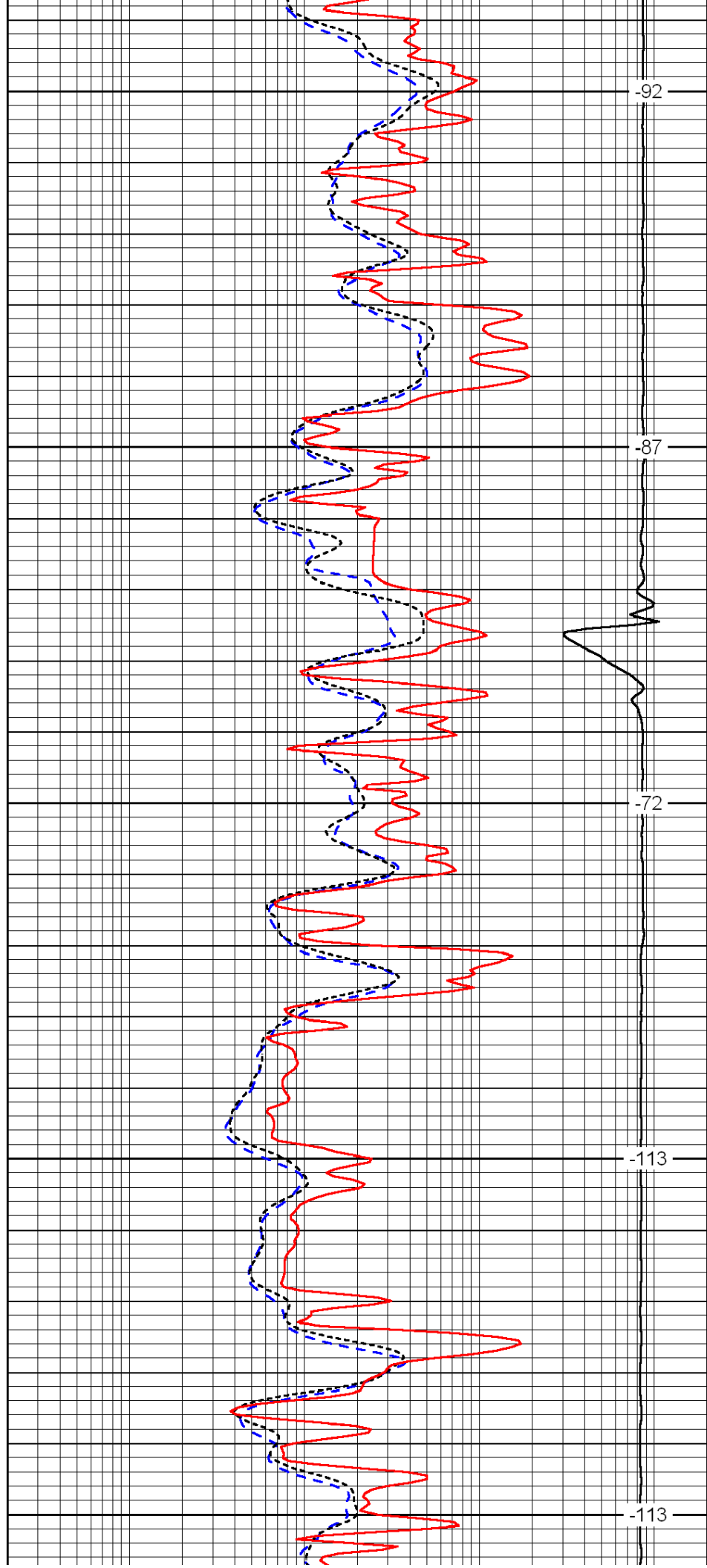
4300

4350

4400

4450

4500



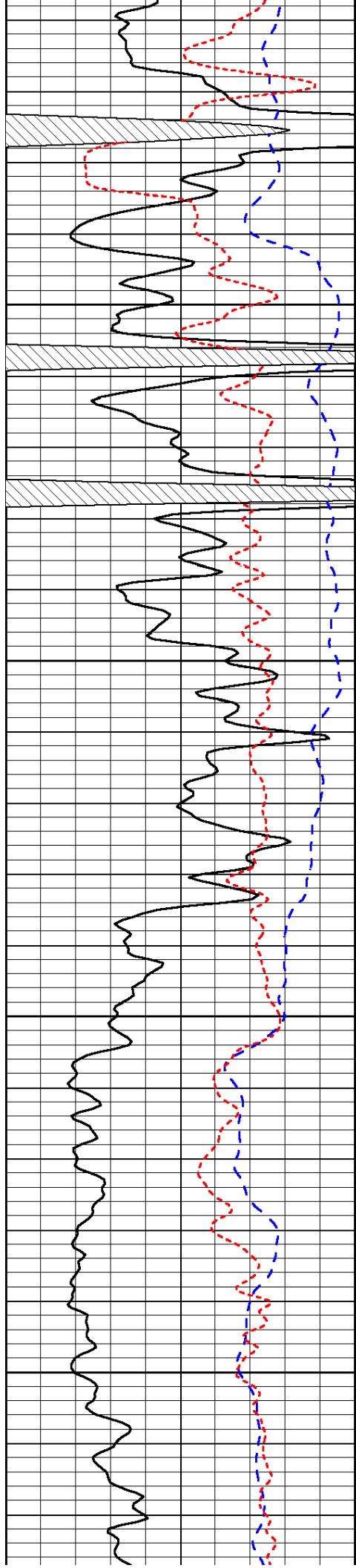
-92

-87

-72

-113

-113

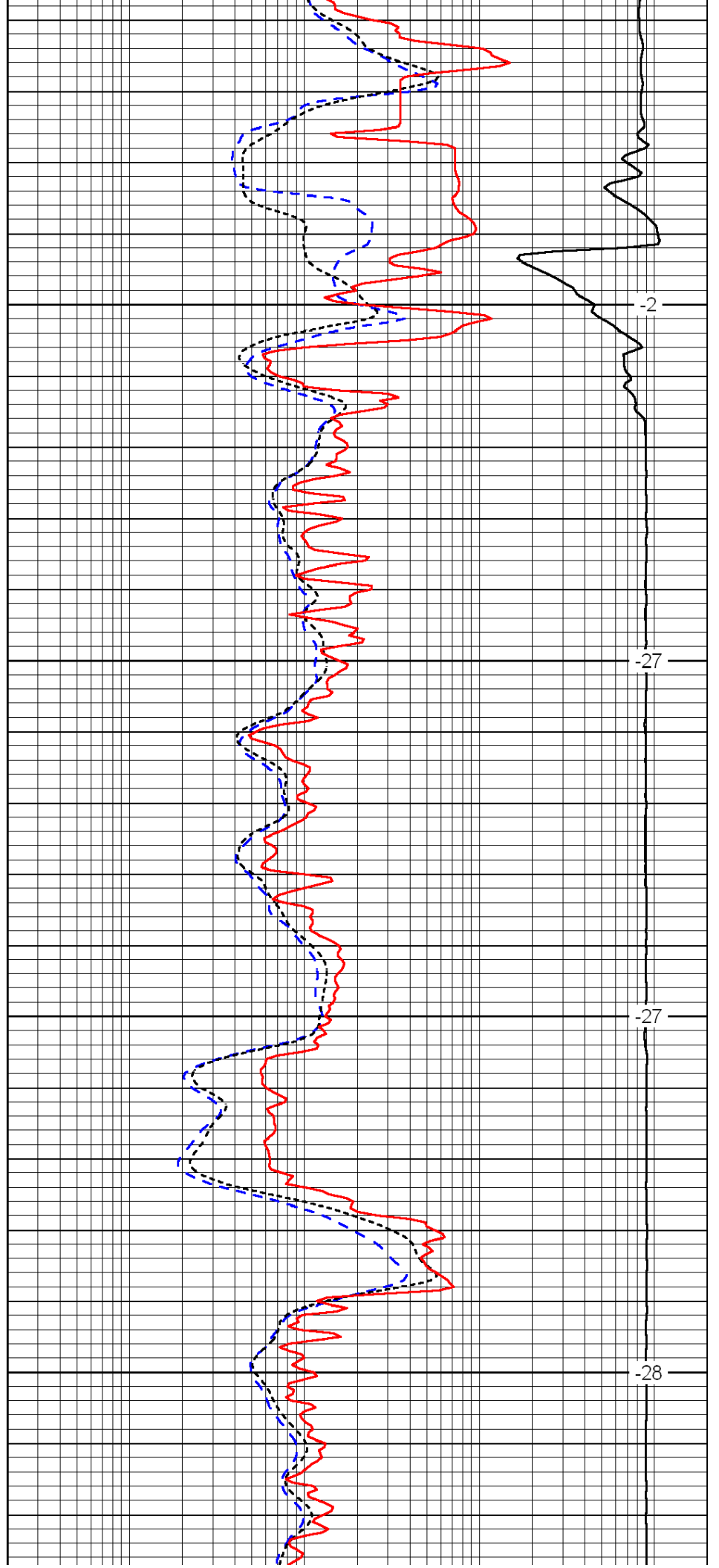


4550

4600

4650

4700

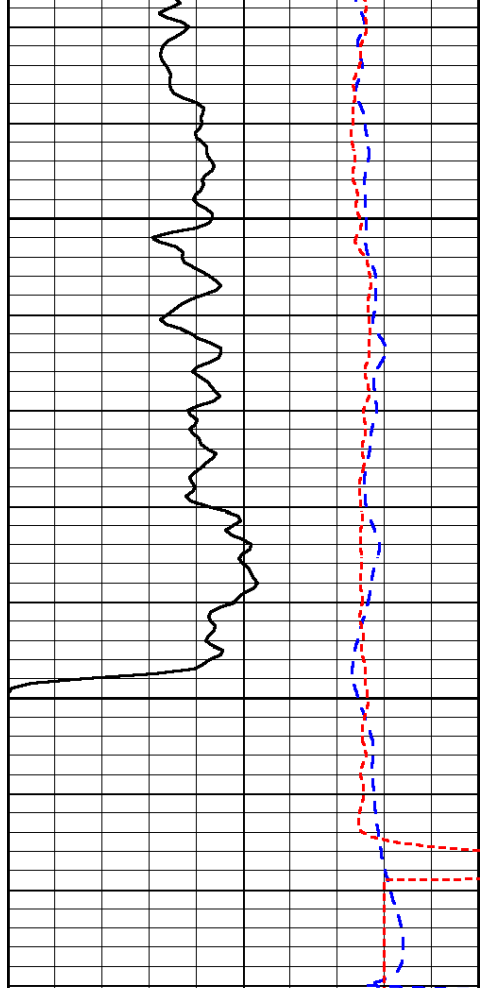


-2

-27

-27

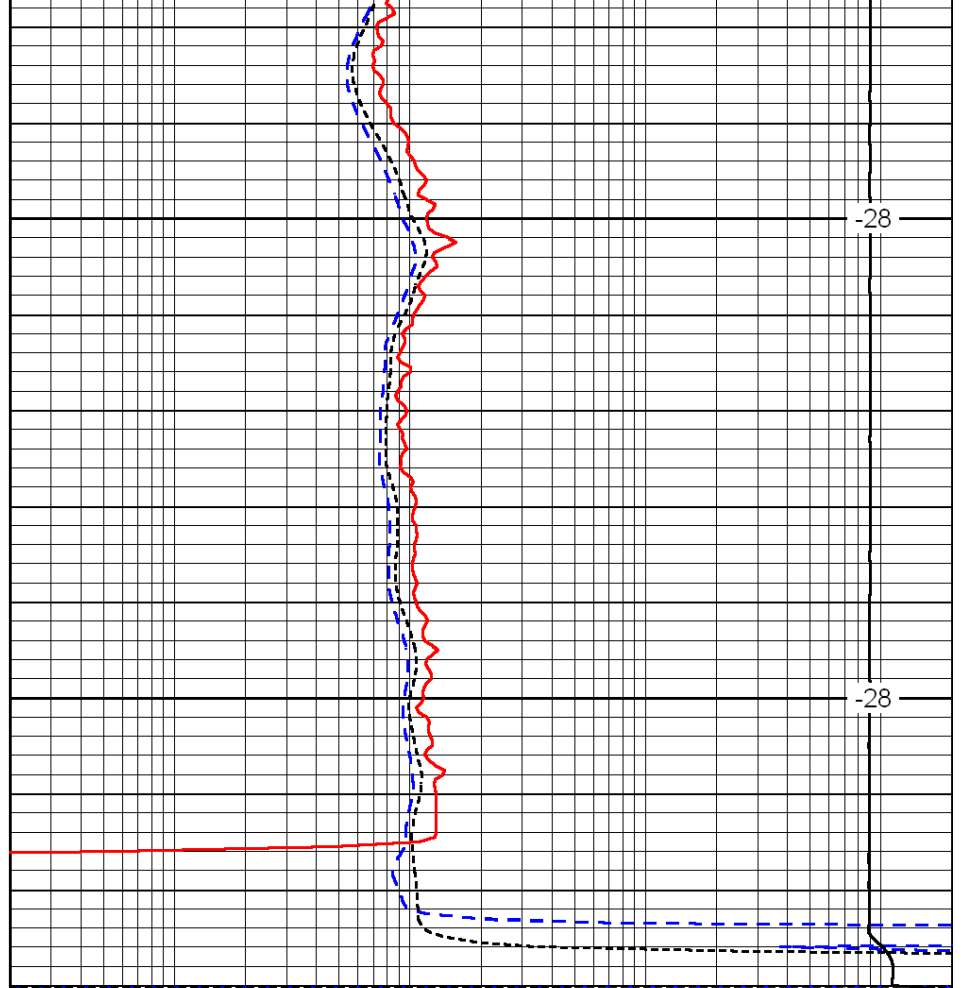
-28



4750

4800

| | | |
|------|-----------|-----|
| 0 | Gamma Ray | 150 |
| -200 | SP (mV) | 0 |
| -160 | Rxo / Rt | 40 |



-28

-28

| | | |
|-------|---------------------|------|
| 0.2 | Deep Resistivity | 2000 |
| 0.2 | Medium Resistivity | 2000 |
| 0.2 | Shallow Resistivity | 2000 |
| 15000 | Line Tension | 0 |

LSPD