



Dual Compensated
Porosity Log

DIGITAL LOG (785) 625-3858

API No. 15-007-23,703-00-00

Company Wildcat Oil & Gas, LLC
Well Liebl No. 5
Field Landis
County Barber
State Kansas

Location S2 N2 NE SW
3,190' FNL & 1,980' FWL

Other Services
DIL

Permament Datum Ground Level Elevation 1316
Log Measured From Kelly Bushing 10 Ft. Above Perm. Datum
Drilling Measured From Kelly Bushing

Sec: 27 Twp: 34 S Rge: 11 W

Elevation
K.B. 1326
D.F. G.L. 1316

Date 5/18/2011

Run Number One

Type Log CNL / CDL

Depth Driller 4825

Depth Logger 4825

Bottom Logged Interval 4804

Top Logged Interval 4530

Type Fluid In Hole Chemical

Salinity, PPM CL 6000

Density 9.5

Level Full

Max. Rec. Temp. F 124

Operating Rig Time 3 Hours

Equipment -- Location 10 Hays

Recorded By Jim Schuler

Witnessed By Tim Pierce

Borehole Record				Casing Record			
Run No.	Bit	From	To	Size	Wgt.	From	To
1	12.25	00	217	8.625	24#	00	217
2	7.875	217	4825				

<<< Fold Here >>>

All interpretations are opinions based on inferences from electrical or other measurements and we cannot and do not guarantee the accuracy or correctness of any interpretation, and we shall not, except in the case of gross or willful negligence on our part, be liable or responsible for any loss, costs, damages, or expenses incurred or sustained by anyone resulting from any interpretation made by any of our officers, agents or employees. These interpretations are also subject to our general terms and conditions set out in our current Price Schedule.

Comments

Thank you for using Log-Tech, Inc.
(785) 625-3858

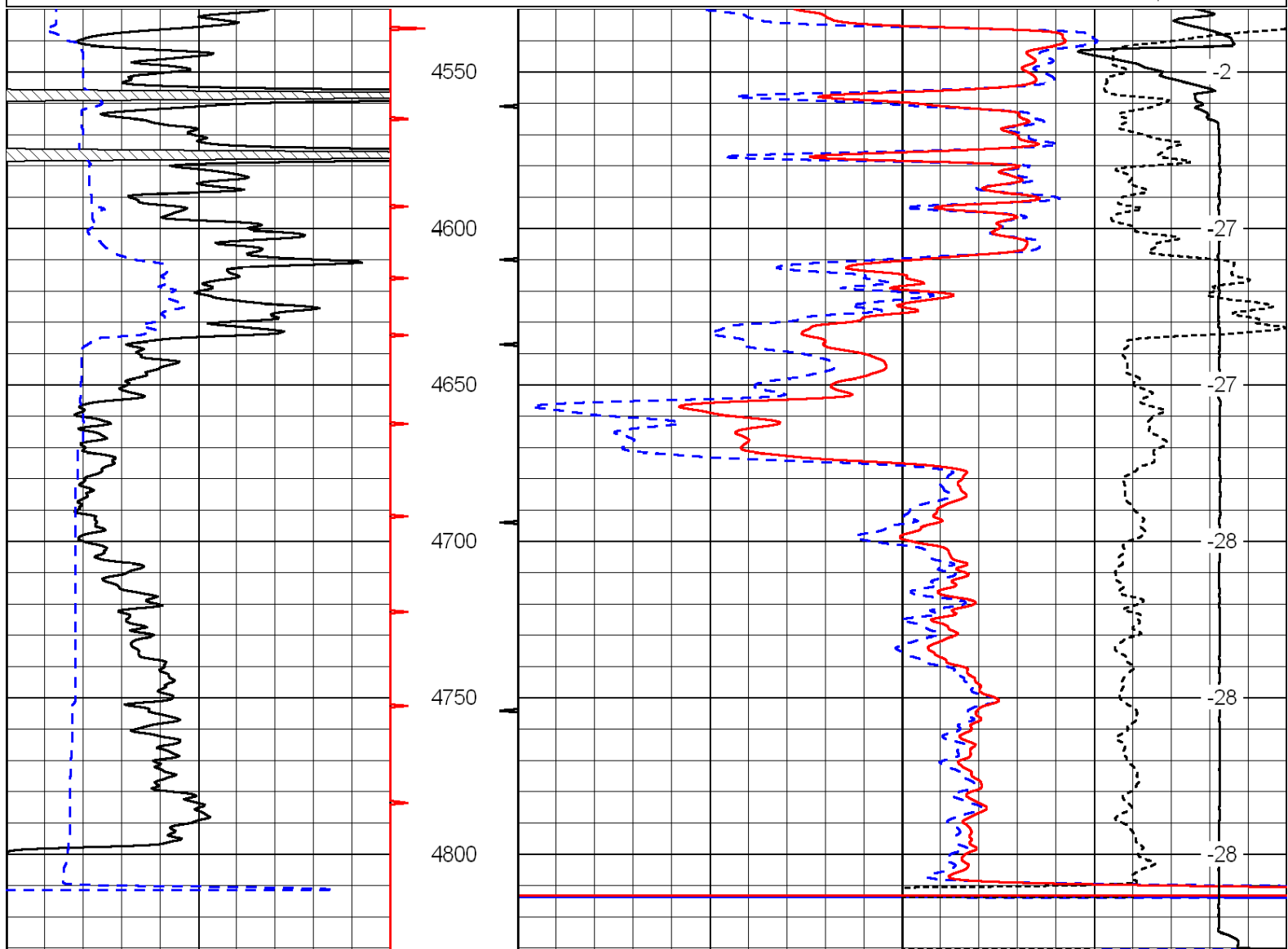
Medicine Lodge, Kansas, 16 Miles South to Rattlesnake Trail,
3 Miles East to Red Dust Road, 1/2 Mile North, East Into

Detail to 4530 only due to hole conditions.

Database File: c:\warrior\data\wildcat_liebl no. 5\wildcat_liebl_5hd.db
Dataset Pathname: DIL\wcstk
Presentation Format: cdl
Dataset Creation: Thu May 19 02:12:35 2011
Charted by: Depth in Feet scaled 1:600

0	Gamma Ray	150
6	Caliper (GAPI)	16

30	Compensated Density	-10
2	Bulk Density	3
15000	Line Tension	0
-0.25	Correction	0.25
LSPD		



0	Gamma Ray	150
6	Caliper (GAPI)	16

30	Compensated Density	-10
2	Bulk Density	3
15000	Line Tension	0
-0.25	Correction	0.25
LSPD		

Database File: c:\warrior\data\wildcat_liebl no. 5\wildcat_liebl_5hd.db
 Dataset Pathname: DIL/wcstk
 Presentation Format: cndlspec
 Dataset Creation: Thu May 19 02:12:35 2011
 Charted by: Depth in Feet scaled 1:240

0	Gamma Ray	150
6	Caliper (GAPI)	16

30	Compensated Neutron (Limestone)	-10
30	Compensated Density (Limestone)	-10
15000	Line Tension	0
-0.25	Correction	0.25
LSPD		

