



Dual Compensated Porosity Log

DIGITAL LOG (785) 625-3858

API No. 15-047-21,598-00-00

Company **McCoy Petroleum Corporation**
 Well **Lewis Trust "E" Unit No. 1-1**
 Field **Wildcat**
 County **Edwards** State **Kansas**

Location **3,031' FSL & 2,970' FEL**

Sec: 1 Twp: 26S Rge: 19W

Other Services
DIL
MEL

Permanent Datum **Ground Level** Elevation **2202**
 Log Measured From **Kelly Bushing** 11 Ft. Above Perm. Datum
 Drilling Measured From **Kelly Bushing**

K.B. 2213
D.F.
G.L. 2202

Date **4/6/2011**

Run Number **One**

Type Log **CNL / CDL**

Depth Driller **4720**

Depth Logger **4720**

Bottom Logged Interval **4718**

Top Logged Interval **3800**

Type Fluid In Hole **Chemical**

Salinity, PPM CL **6500**

Density **9.1**

Level **Full**

Max. Rec. Temp. F **123**

Operating Rig Time **5 Hours**

Equipment -- Location **10 Hays**

Recorded By **J. Long**

Witnessed By **Jerry A. Smith**

Borehole Record				Casing Record			
Run No.	Bit	From	To	Size	Wgt.	From	To
1	12.25	00	273	8.625	24#	00	273
2	7.875	273	4720				

<<< Fold Here >>>

All interpretations are opinions based on inferences from electrical or other measurements and we cannot and do not guarantee the accuracy or correctness of any interpretation, and we shall not, except in the case of gross or willful negligence on our part, be liable or responsible for any loss, costs, damages, or expenses incurred or sustained by anyone resulting from any interpretation made by any of our officers, agents or employees. These interpretations are also subject to our general terms and conditions set out in our current Price Schedule.

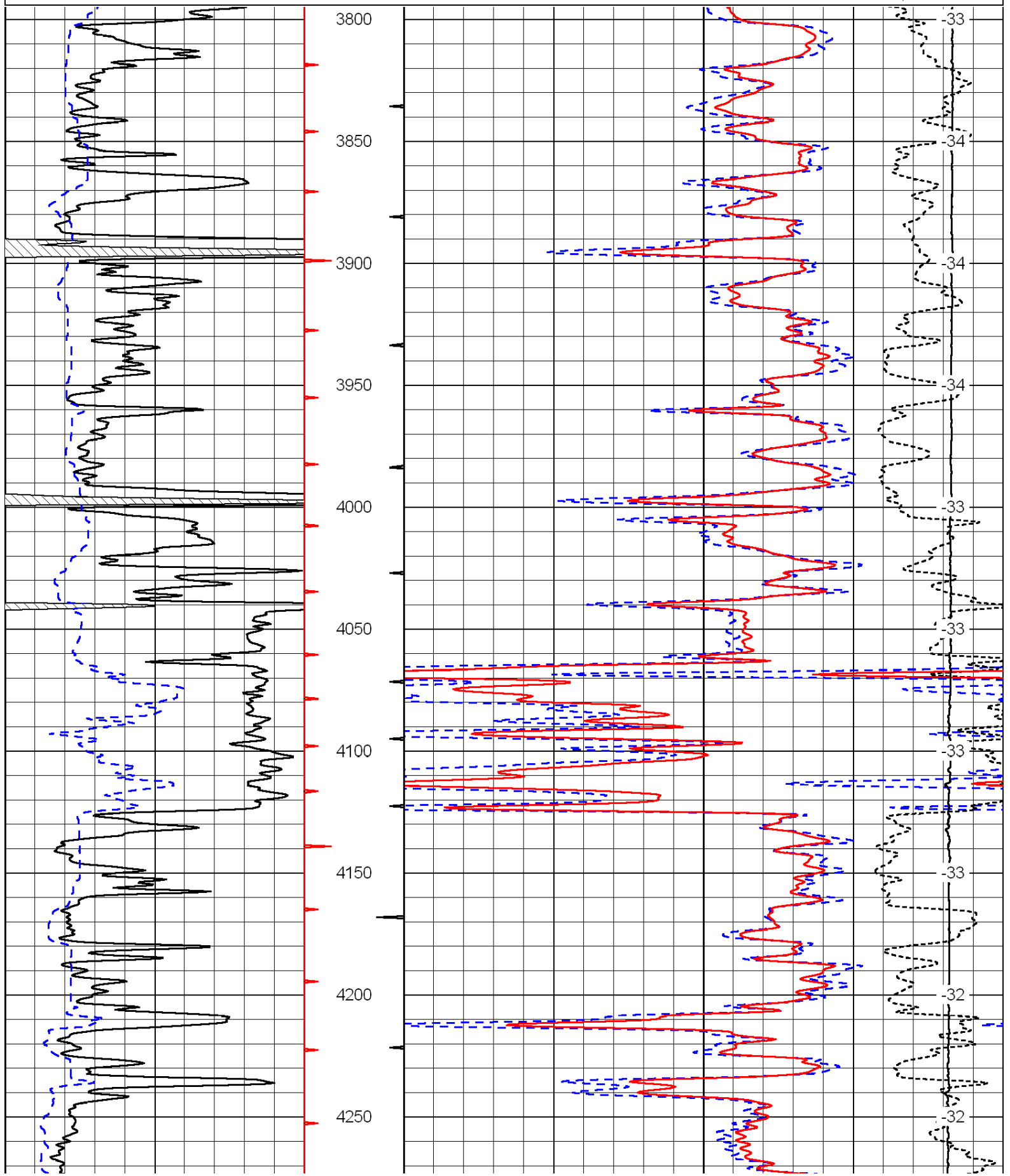
Comments

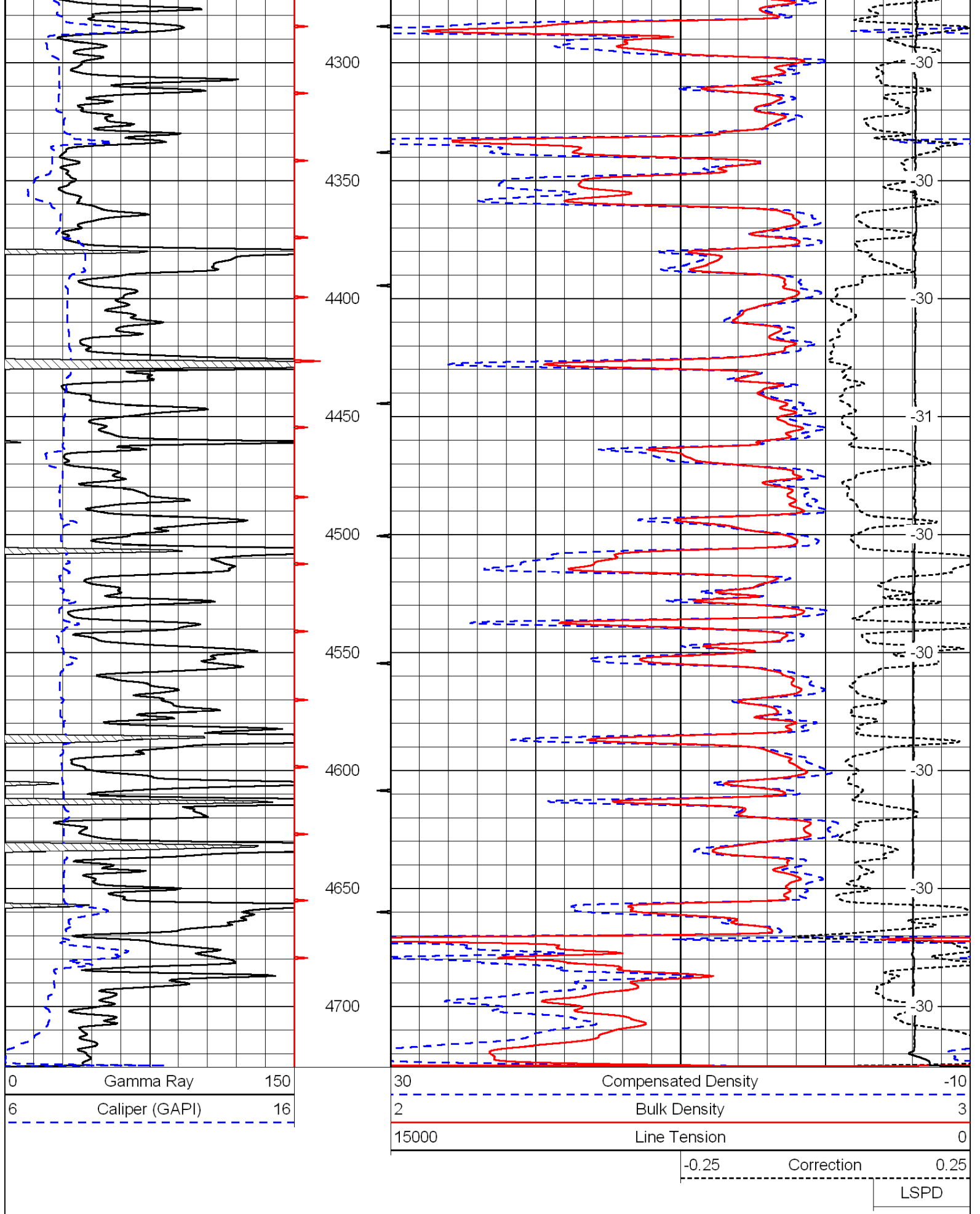
Thank you for using Log-Tech, Inc.
(785) 625-3858

Kinsley, 9 South to T Rd, 2 East, 1/2 North, East Into

0	Gamma Ray	150
6	Caliper (GAPI)	16

30	Compensated Density	-10
2	Bulk Density	3
15000	Line Tension	0
	Correction	0.25
	LSPD	





0	Gamma Ray	150
6	Caliper (GAPI)	16

30	Compensated Neutron (Limestone)	-10
30	Compensated Density (Limestone)	-10
15000	Line Tension	0
-0.25	Correction	0.25
LSPD		

