



Dual Induction Log

DIGITAL LOG (785) 625-3858

API No.	15-047-21,598-00-00		
Company	McCoy Petroleum Corporation		
Well	Lewis Trust "E" Unit No. 1-1		
Field	Wildcat		
County	Edwards	State	Kansas
Location	3,031' FSL & 2,970' FEL		
Sec: 1	Twp: 26S	Rge: 19W	Other Services CNL/CDL MEL

Permanent Datum	Ground Level	Elevation 2202	K.B. 2213
Log Measured From	Kelly Bushing	11 Ft. Above Perm. Datum	D.F. 2202
Drilling Measured From	Kelly Bushing		G.L. 2202
Date	4/6/2011		
Run Number	One		
Depth Driller	4720		
Depth Logger	4720		
Bottom Logged Interval	4719		
Top Log Interval	250		
Casing Driller	8.625 @ 273		
Casing Logger	272		
Bit Size	7.875		
Type Fluid in Hole	Chemical		
Salinity, ppm CL	6500		
Density / Viscosity	9.1	90+	
pH / Fluid Loss	10.5	10.4	
Source of Sample	Flowline		
Rm @ Meas. Temp	.68	@ 62	
Rmf @ Meas. Temp	.51	@ 62	
Rmc @ Meas. Temp	.92	@ 62	
Source of Rmf / Rmc	Charts		
Rm @ BHT	.34	@ 123	
Operating Rig Time	5 Hours		
Max Rec. Temp. F	123		
Equipment Number	10		
Location	Hays		
Recorded By	J. Long		
Witnessed By	Jerry A. Smith		

<<< Fold Here >>>

All interpretations are opinions based on inferences from electrical or other measurements and we cannot and do not guarantee the accuracy or correctness of any interpretation, and we shall not, except in the case of gross or willful negligence on our part, be liable or responsible for any loss, costs, damages, or expenses incurred or sustained by anyone resulting from any interpretation made by any of our officers, agents or employees. These interpretations are also subject to our general terms and conditions set out in our current Price Schedule.

Comments

Thank you for using Log-Tech, Inc.
(785) 625-3858

Kinsley, 9 South to T Rd, 2 East, 1/2 North, East Into

Database File: c:\warrior\data\mccoy_lewis trust e unit no. 1-1\mccoy_lewistruste_1-1hd.db
 Dataset Pathname: dil/mcstck
 Presentation Format: dil2in
 Dataset Creation: Wed Apr 06 04:58:40 2011
 Charted by: Depth in Feet scaled 1:600

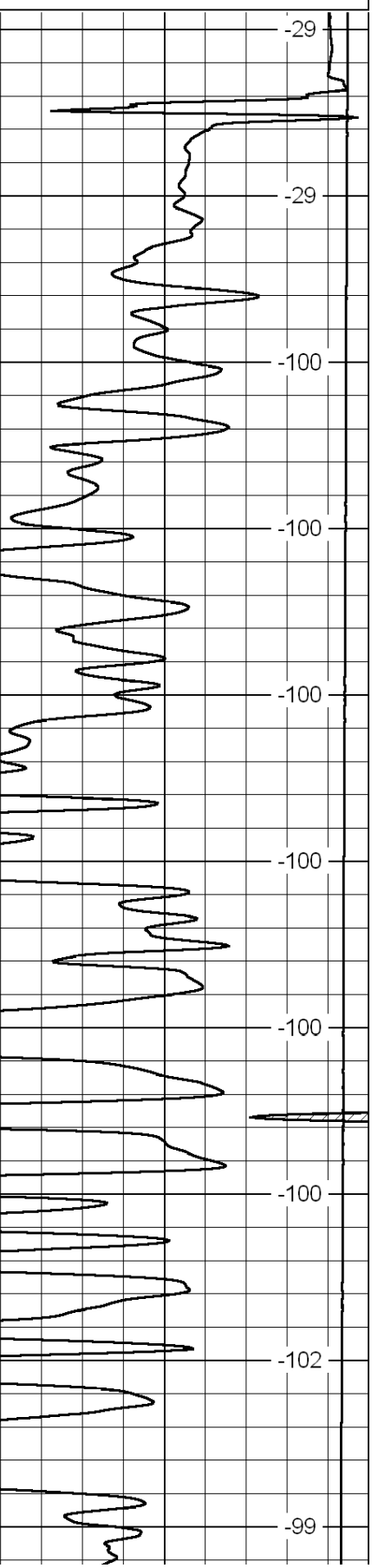
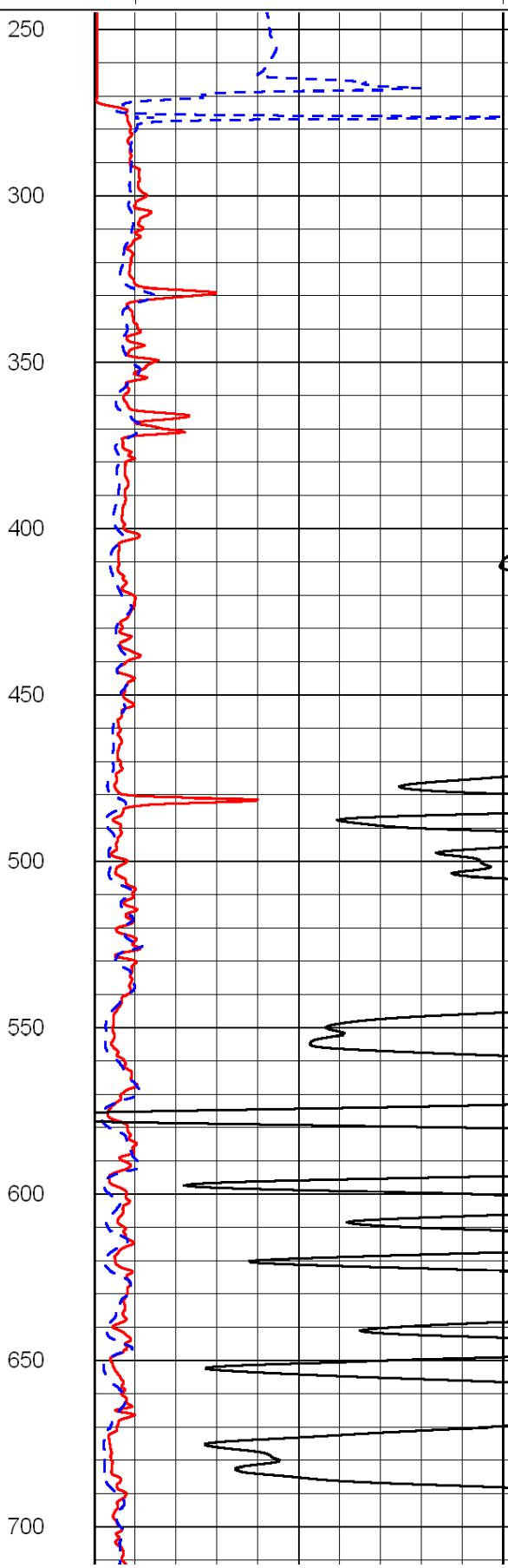
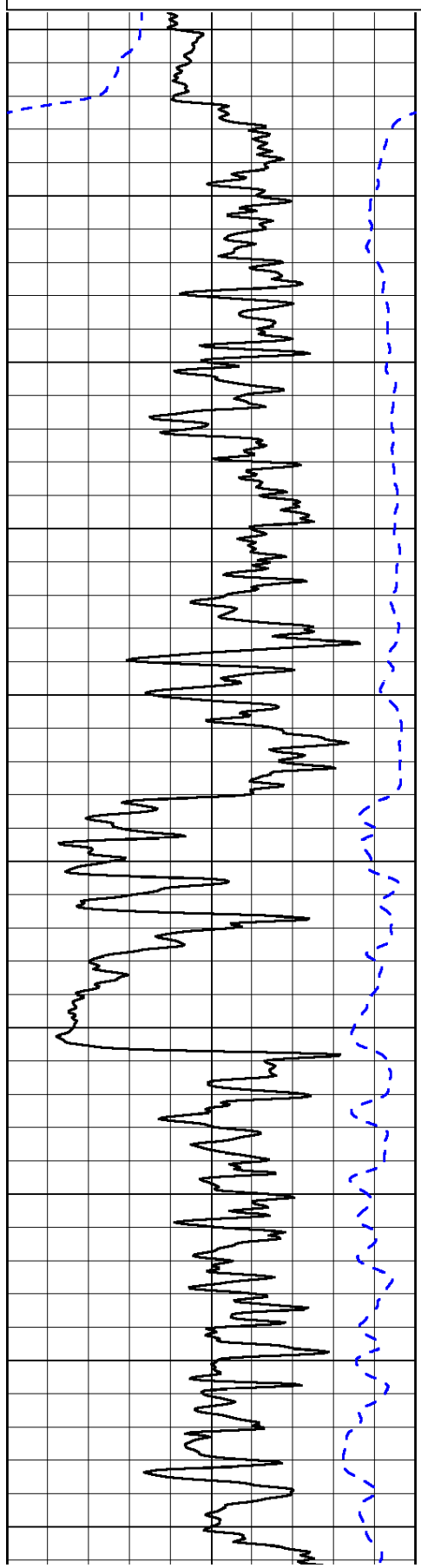
0	Gamma Ray	150
-200	SP (mV)	0

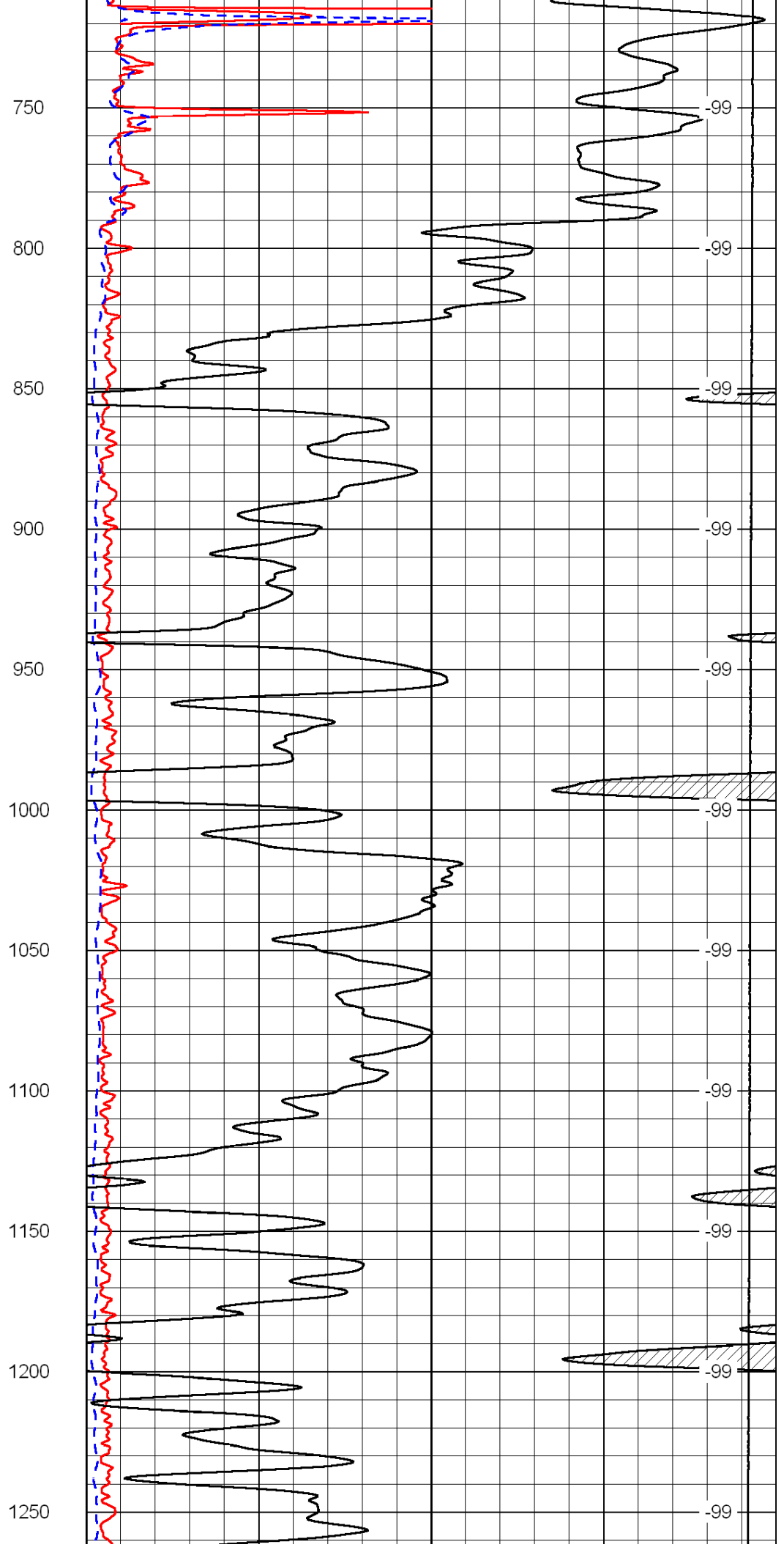
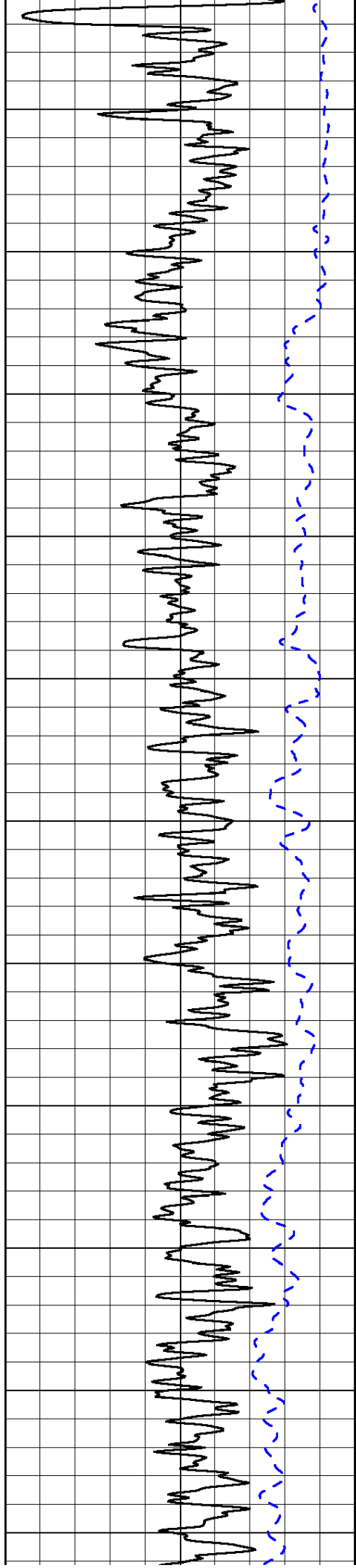
0	Shallow Resistivity	50
0	Deep Resistivity	50

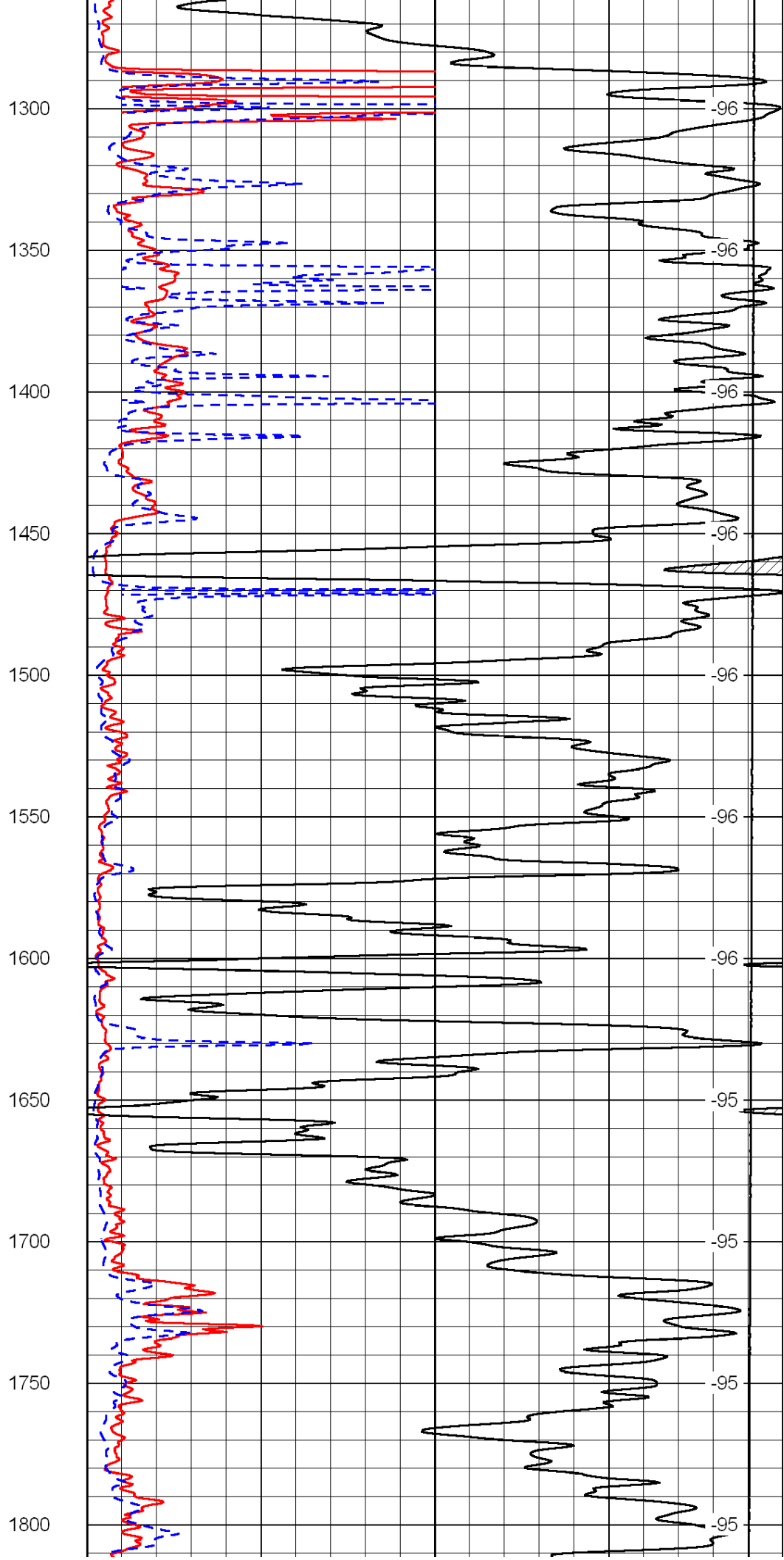
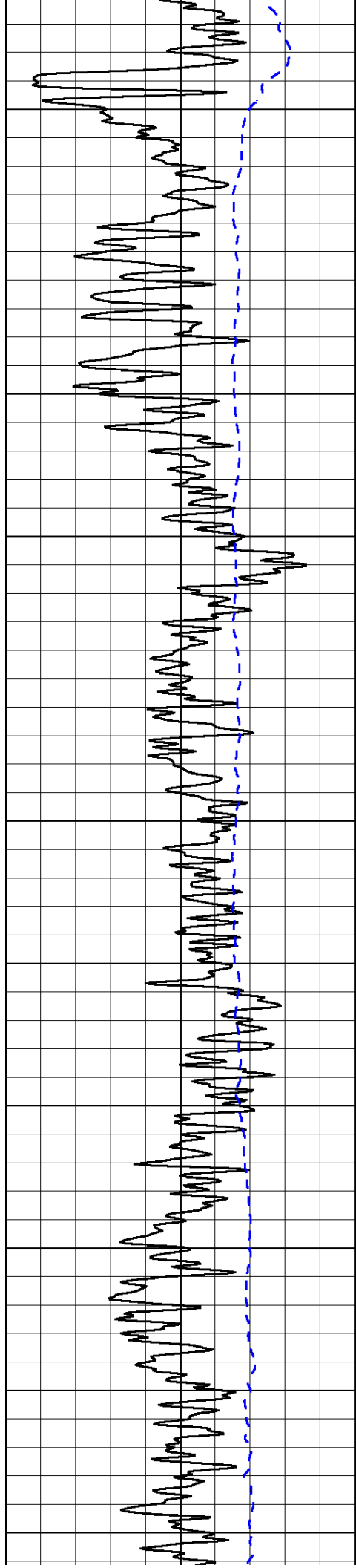
LSPD

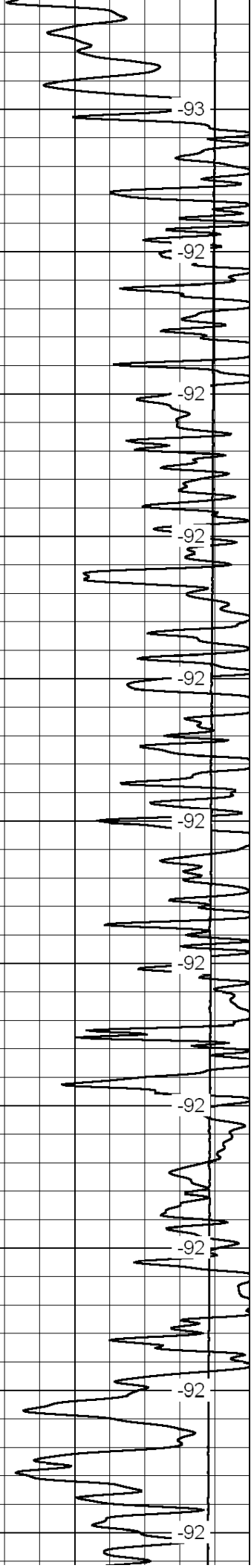
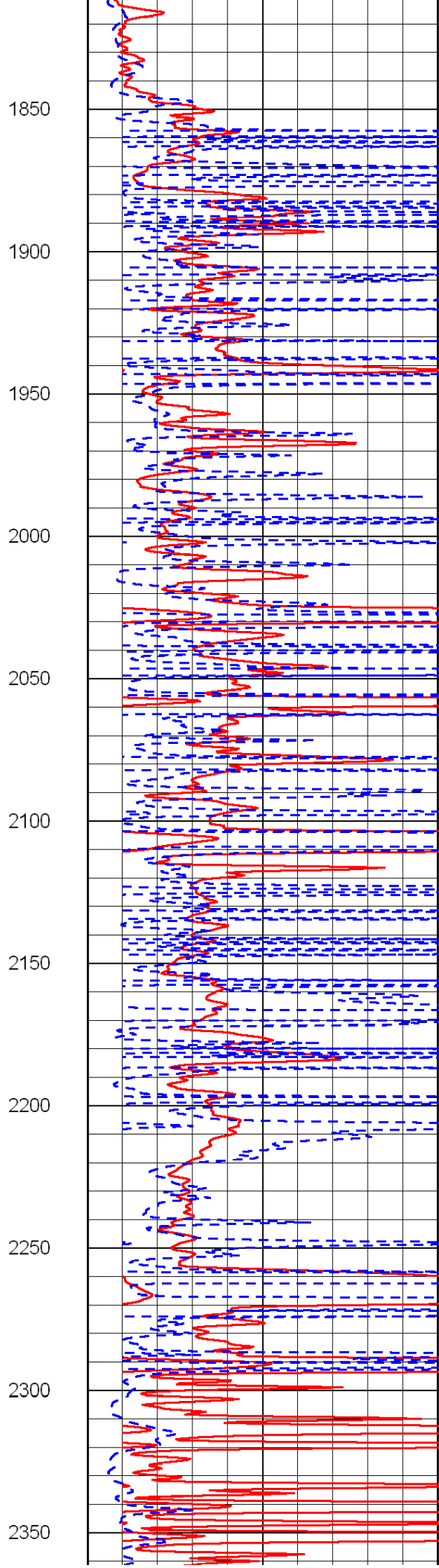
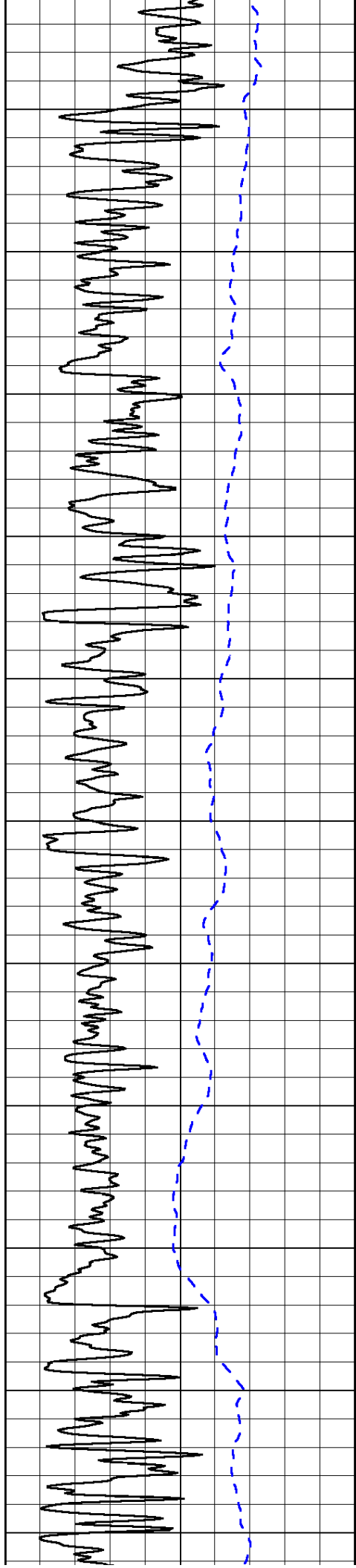
1000	Conductivity	0
15000	Line Tension	0

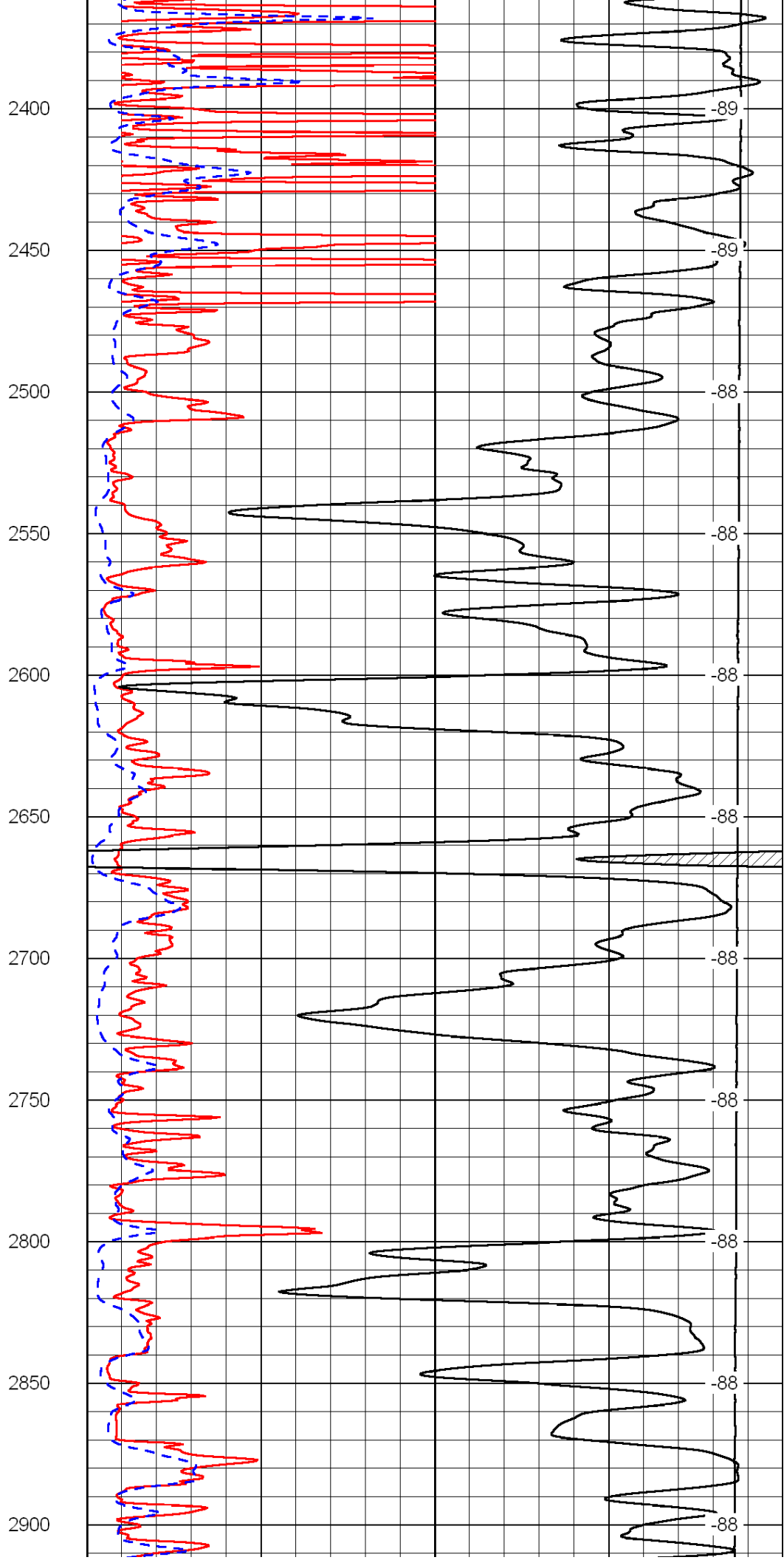
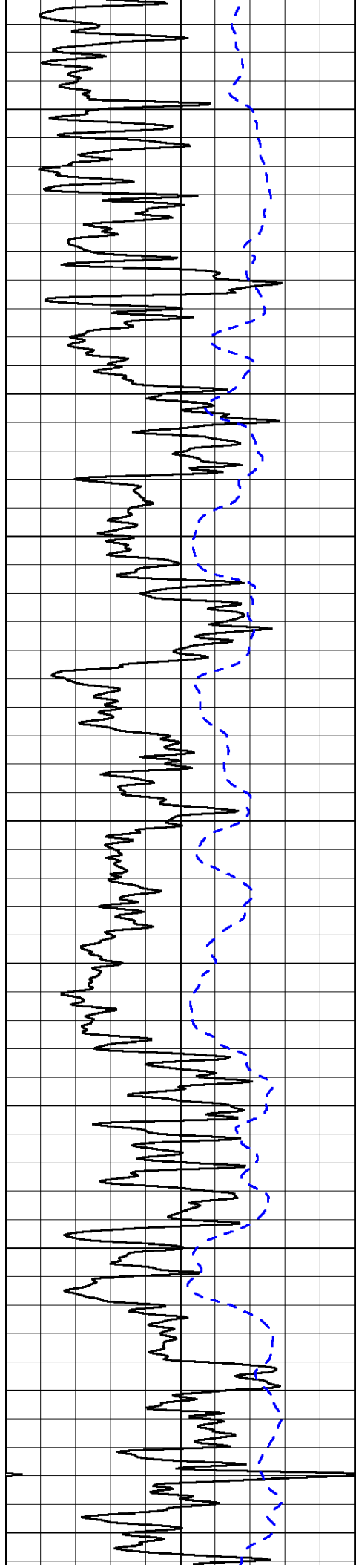
50	Shallow Resistivity	500
50	Deep Resistivity	500

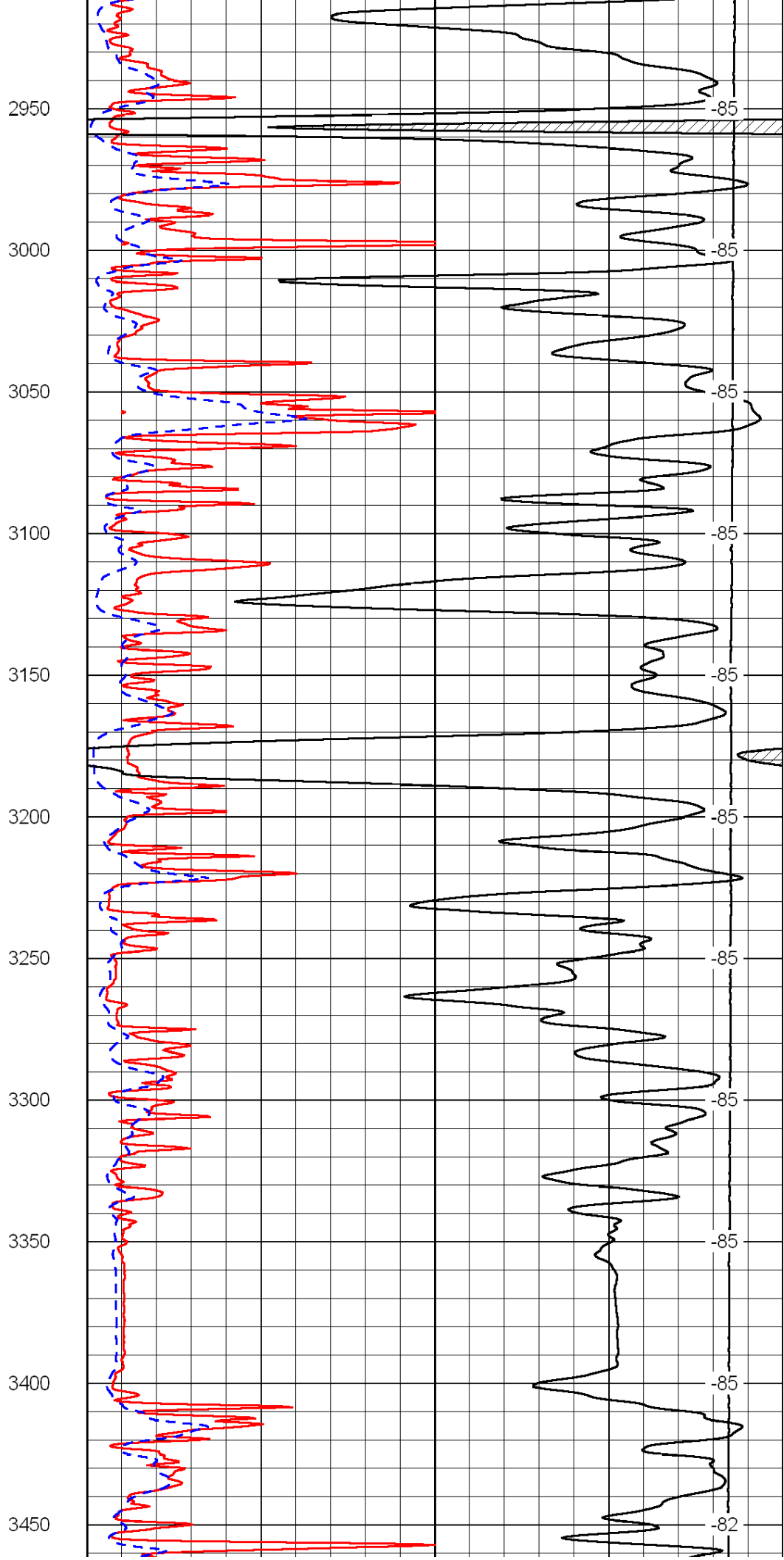
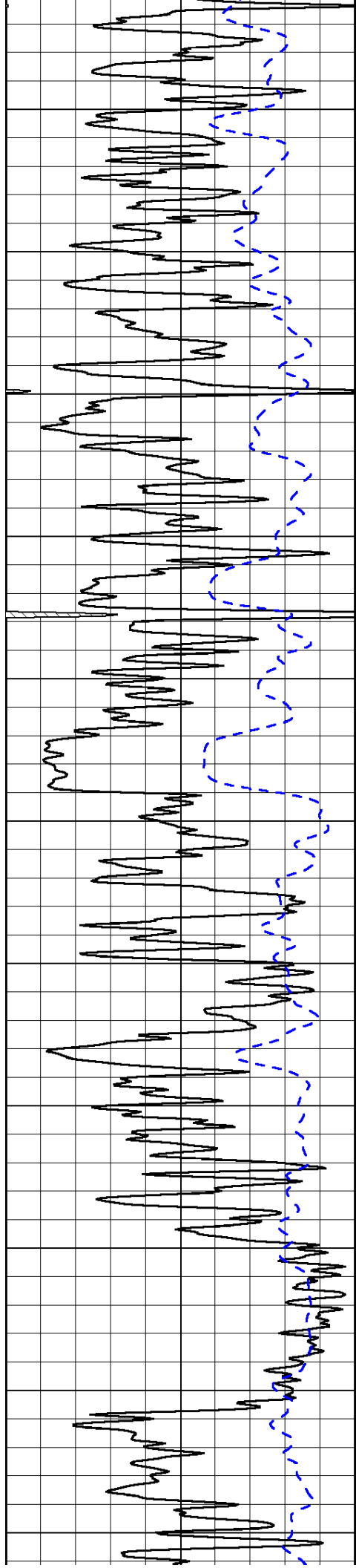


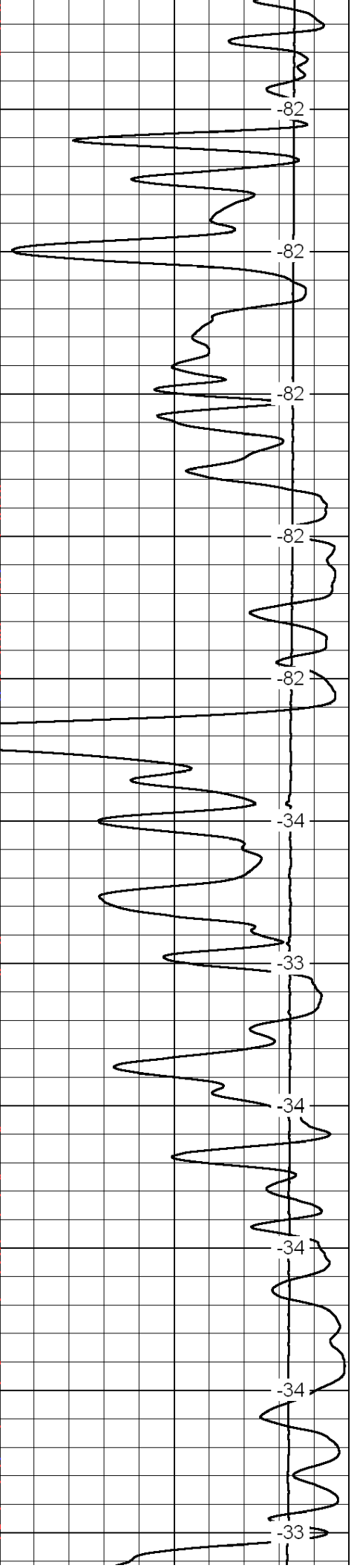
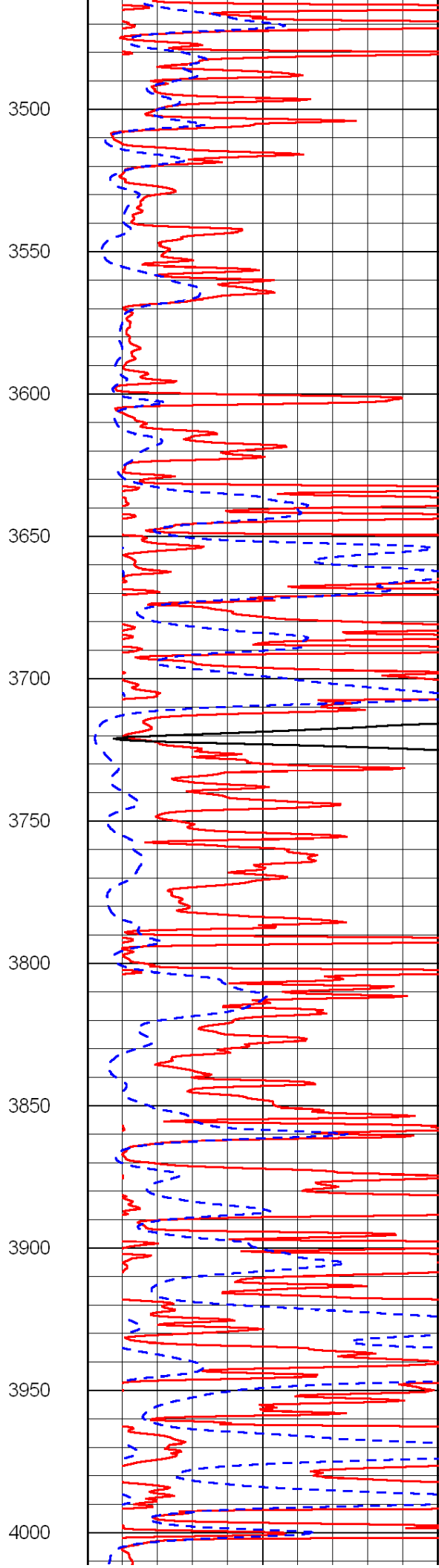
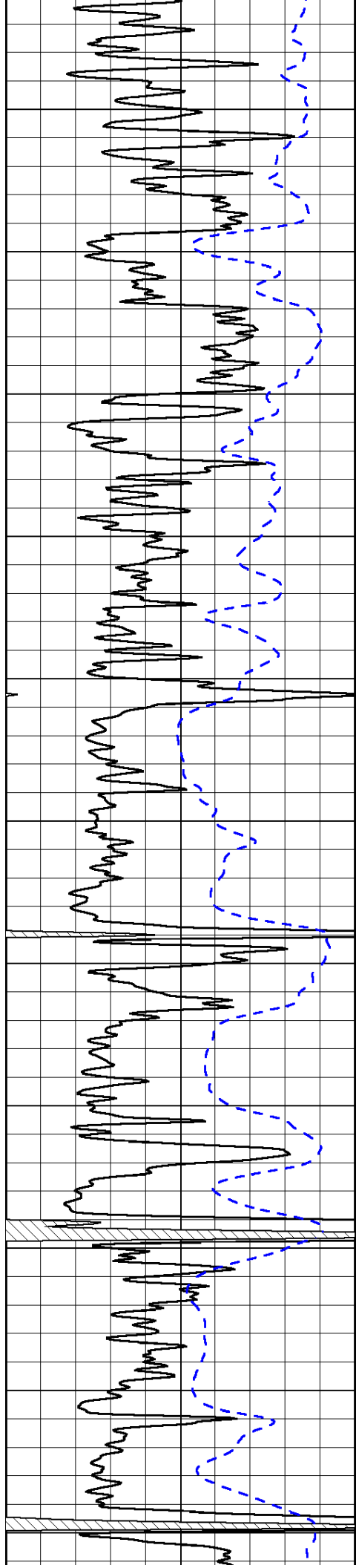


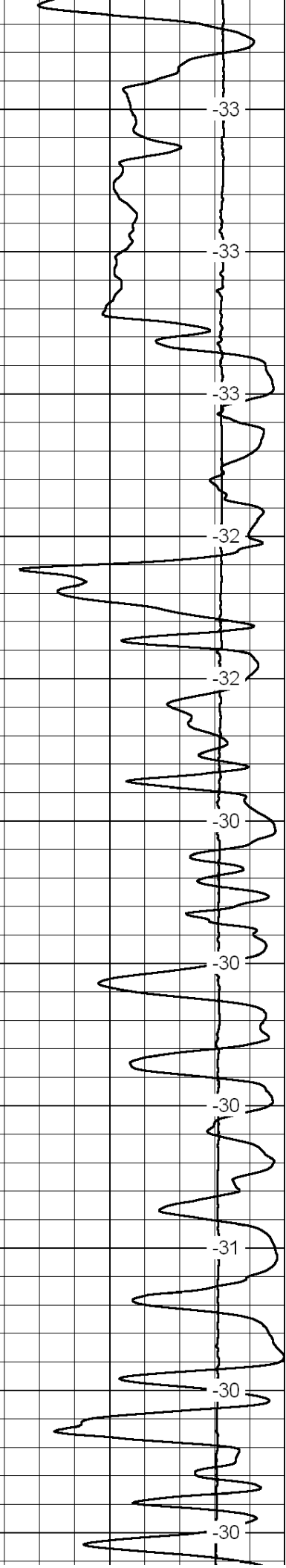
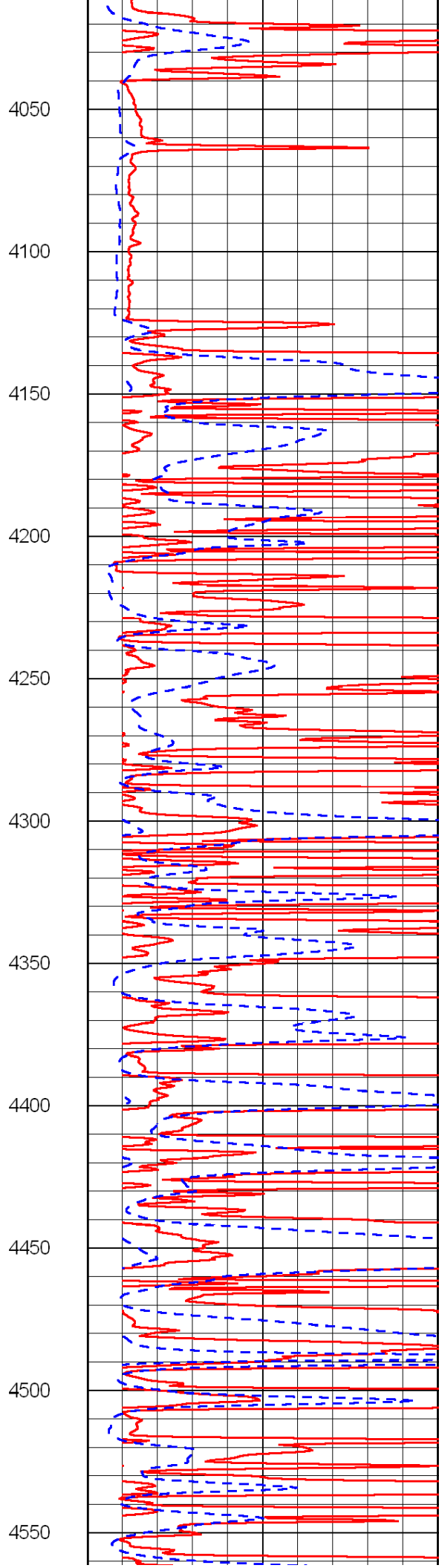
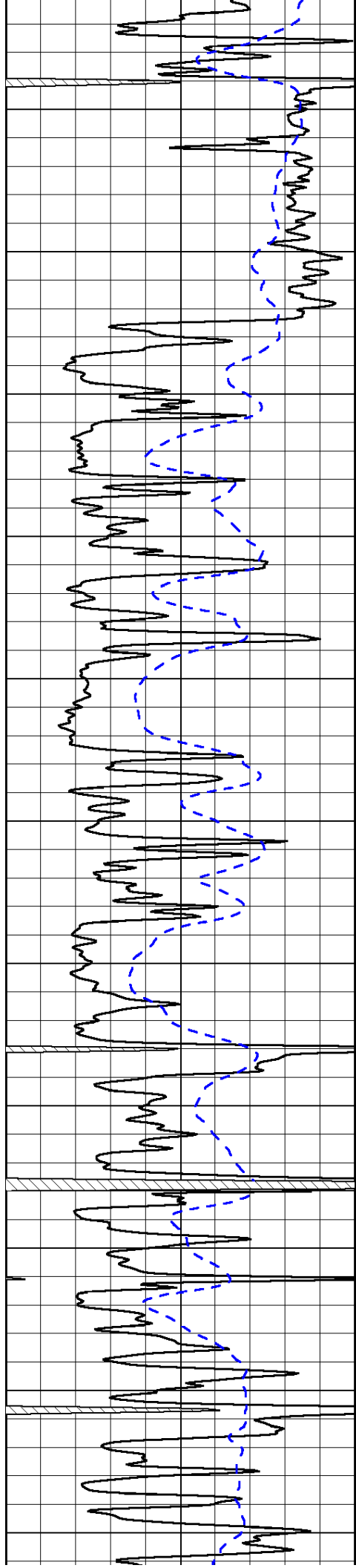


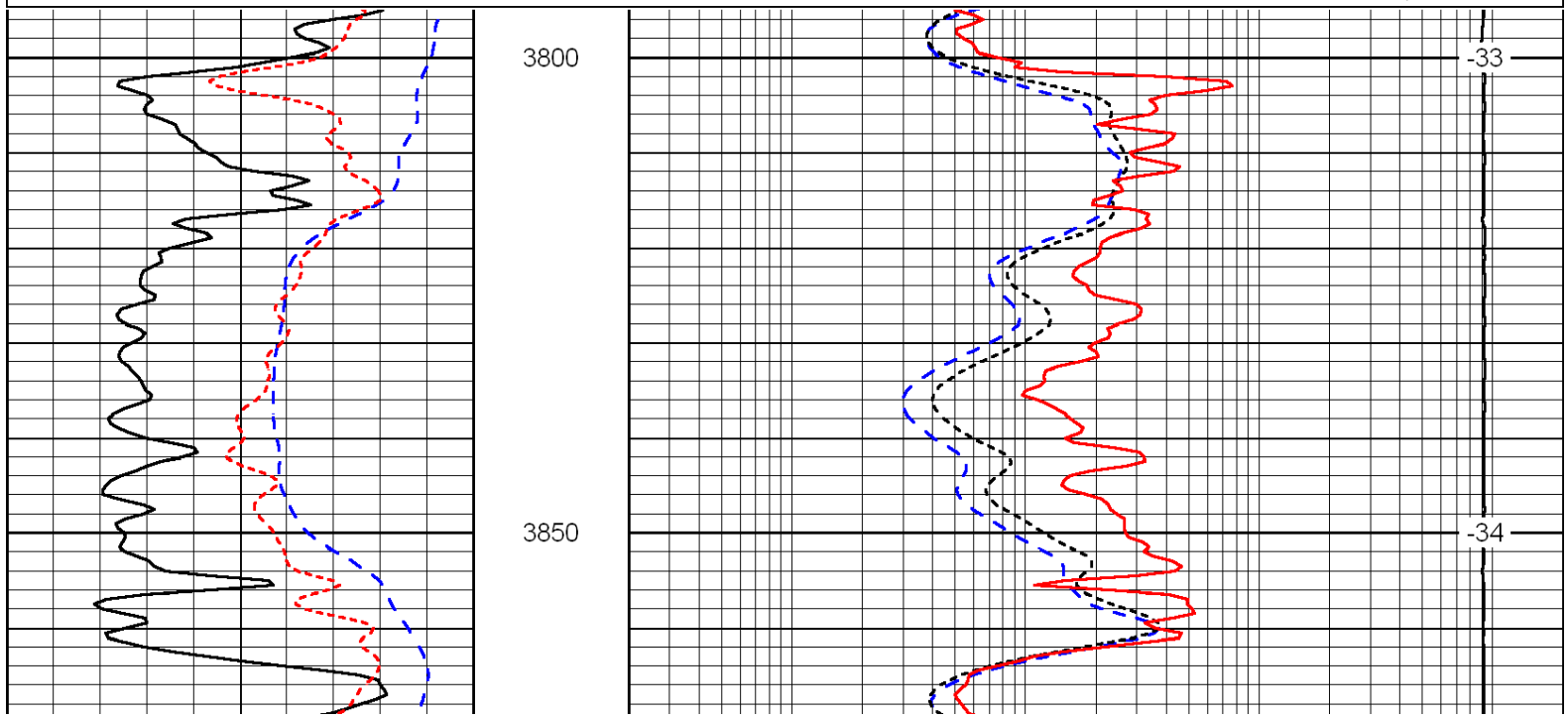
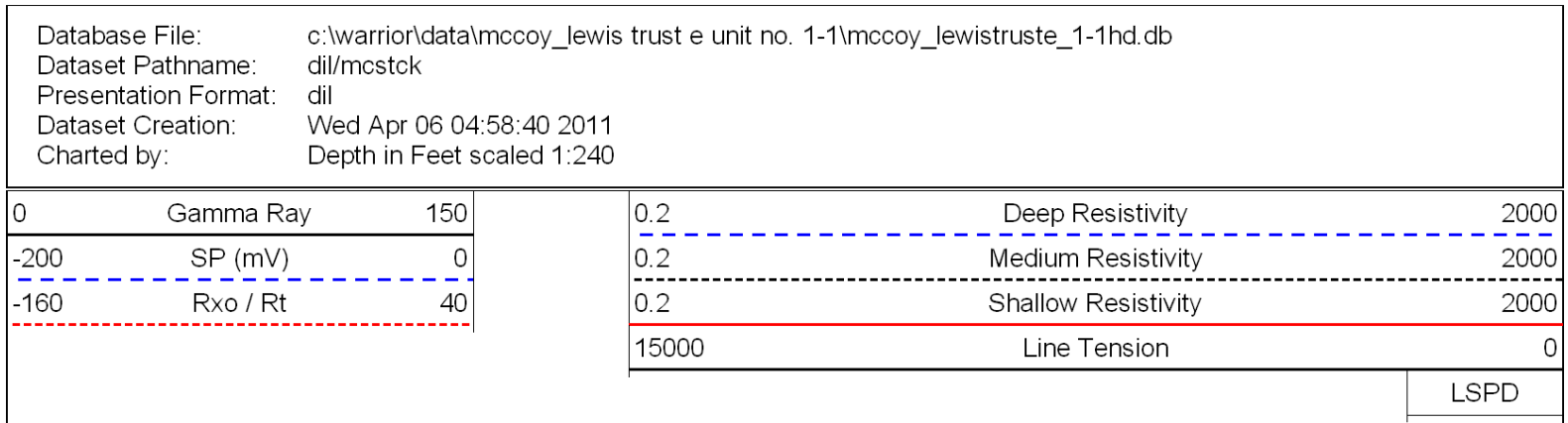
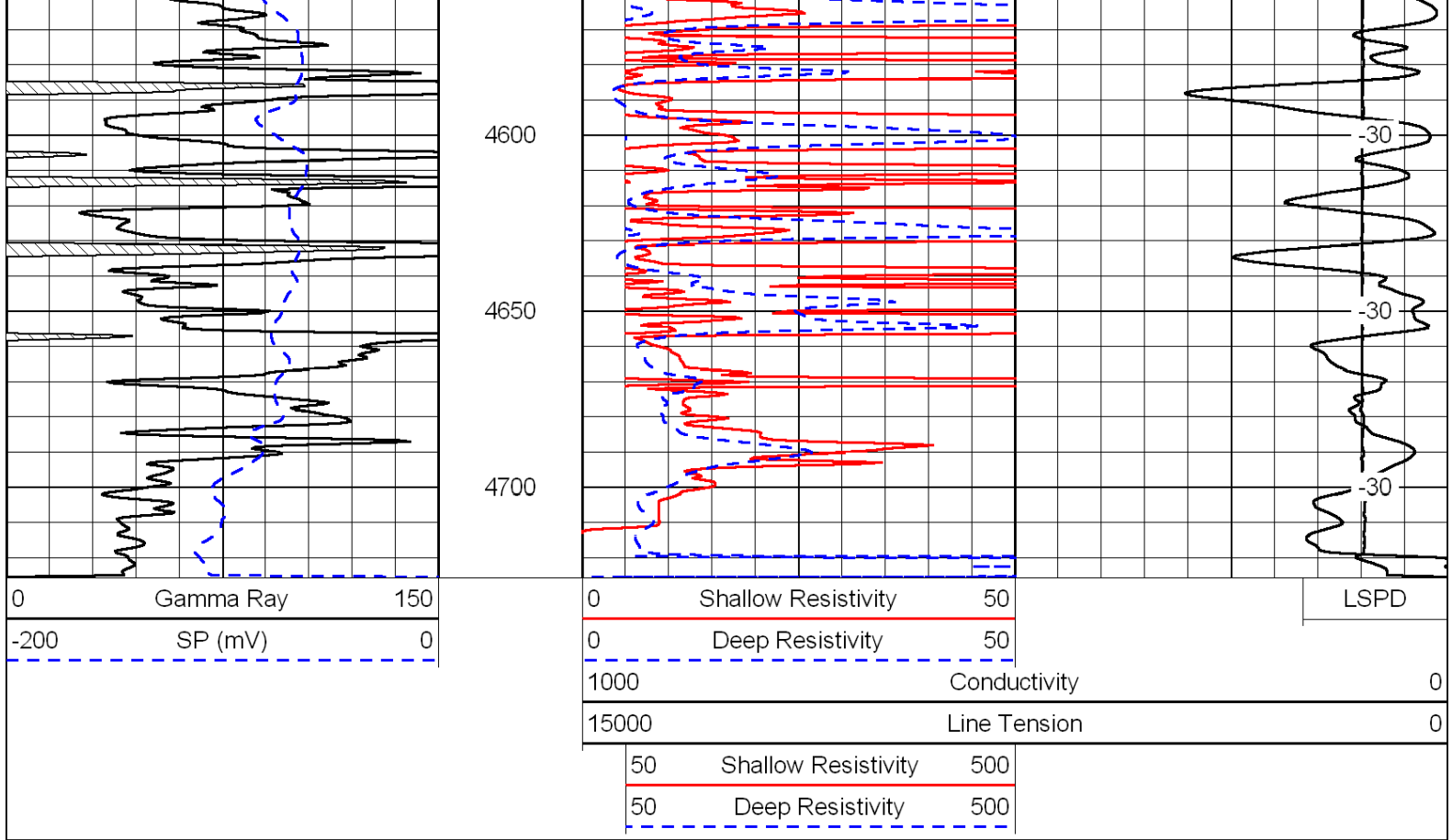


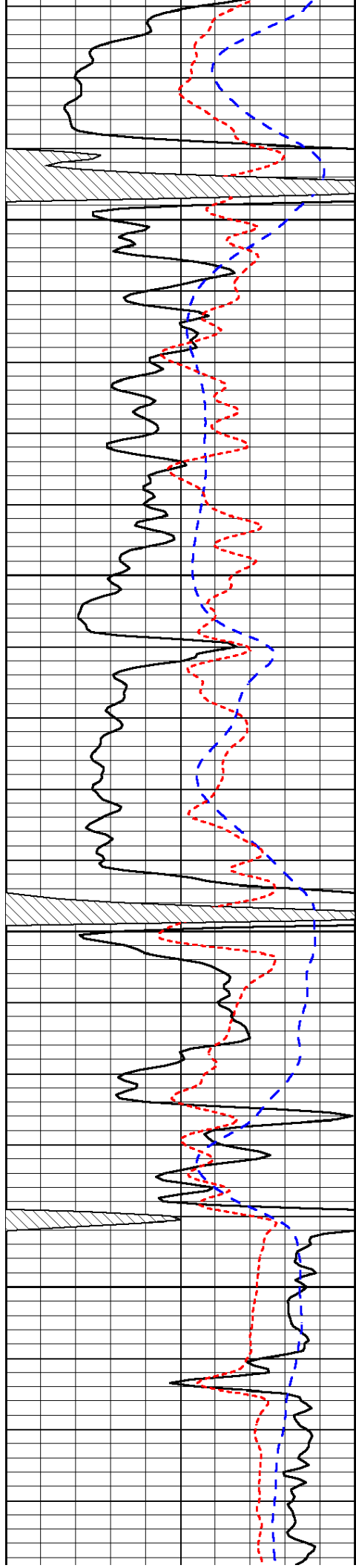










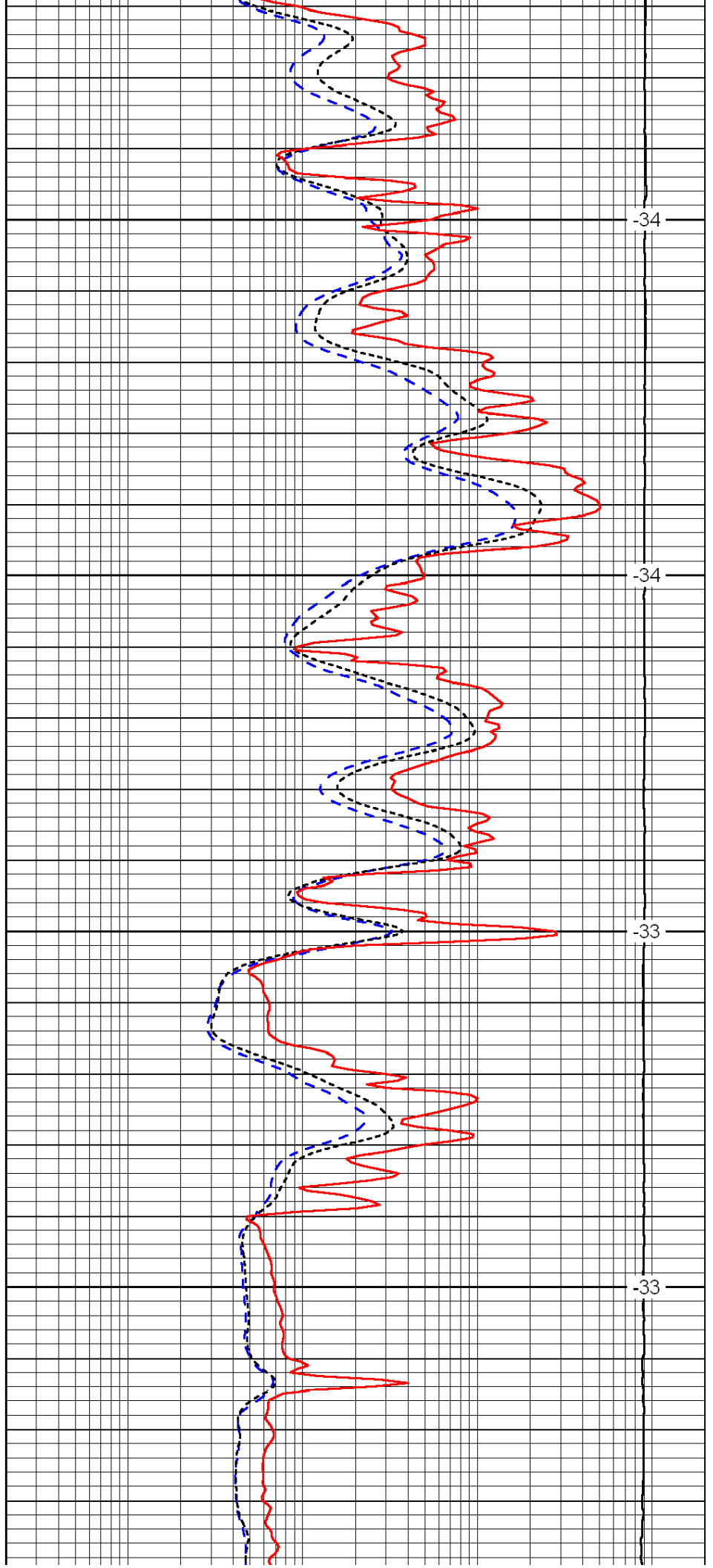


3900

3950

4000

4050

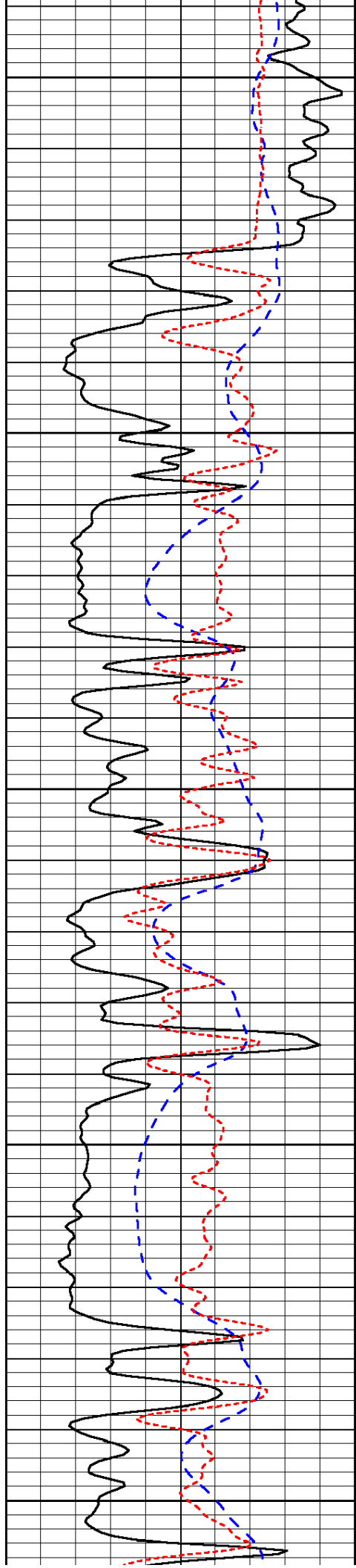


-34

-34

-33

-33



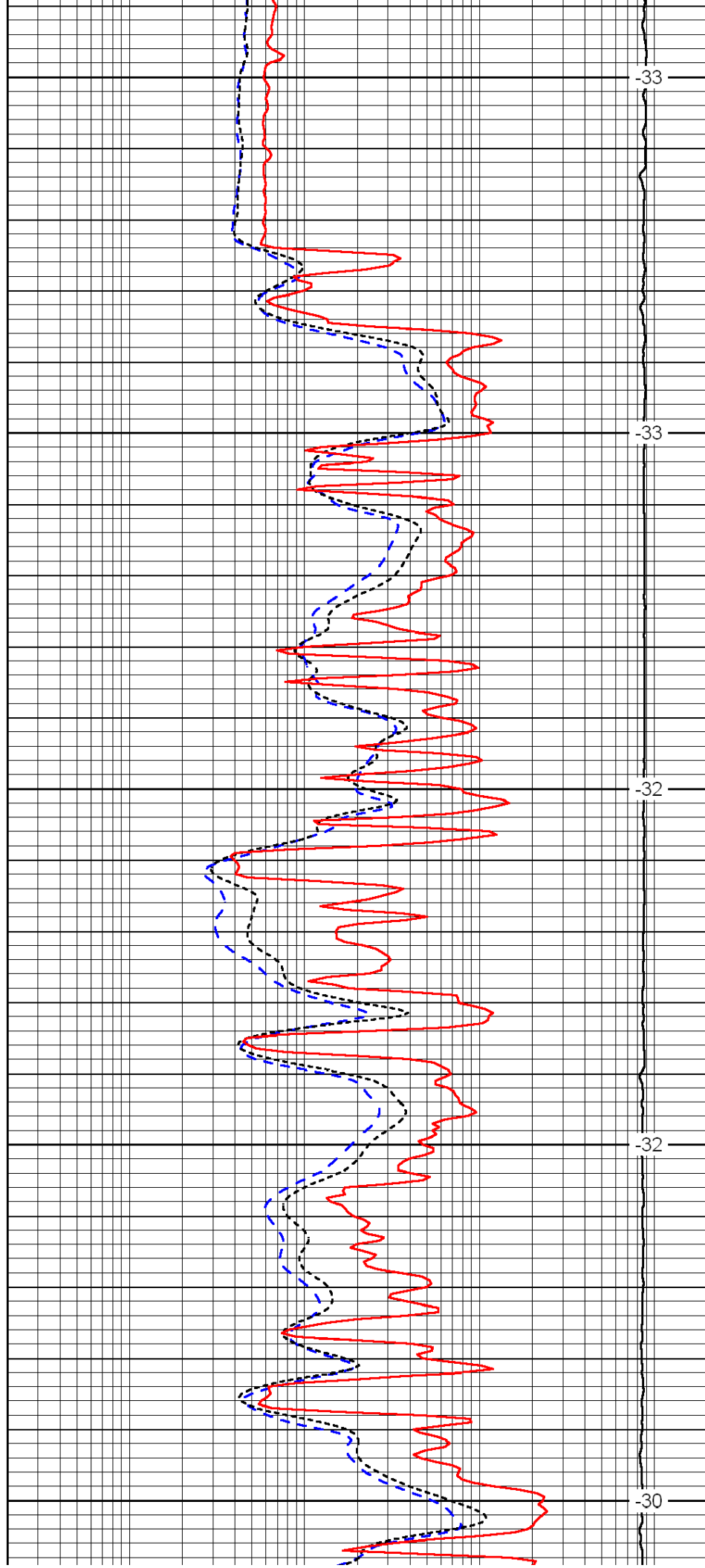
4100

4150

4200

4250

4300



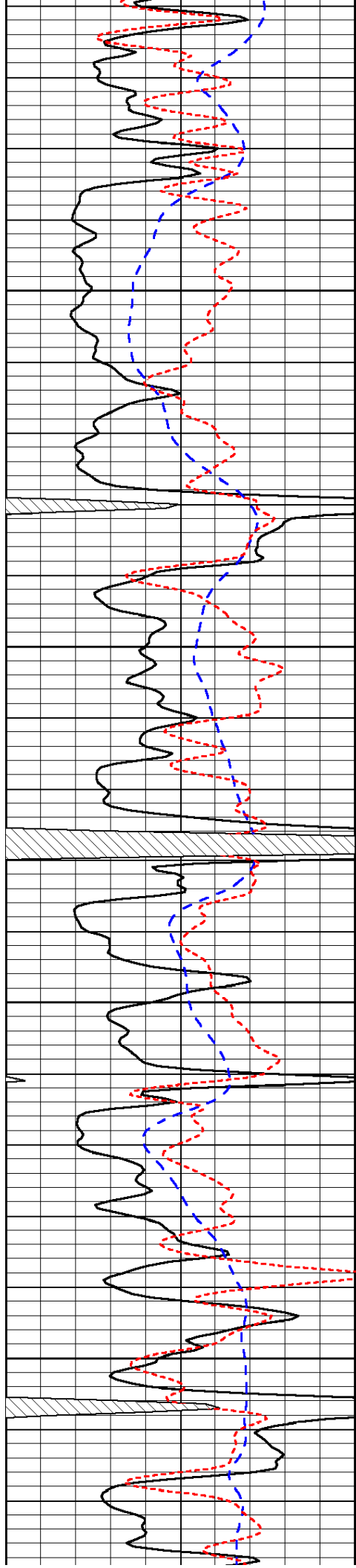
-33

-33

-32

-32

-30

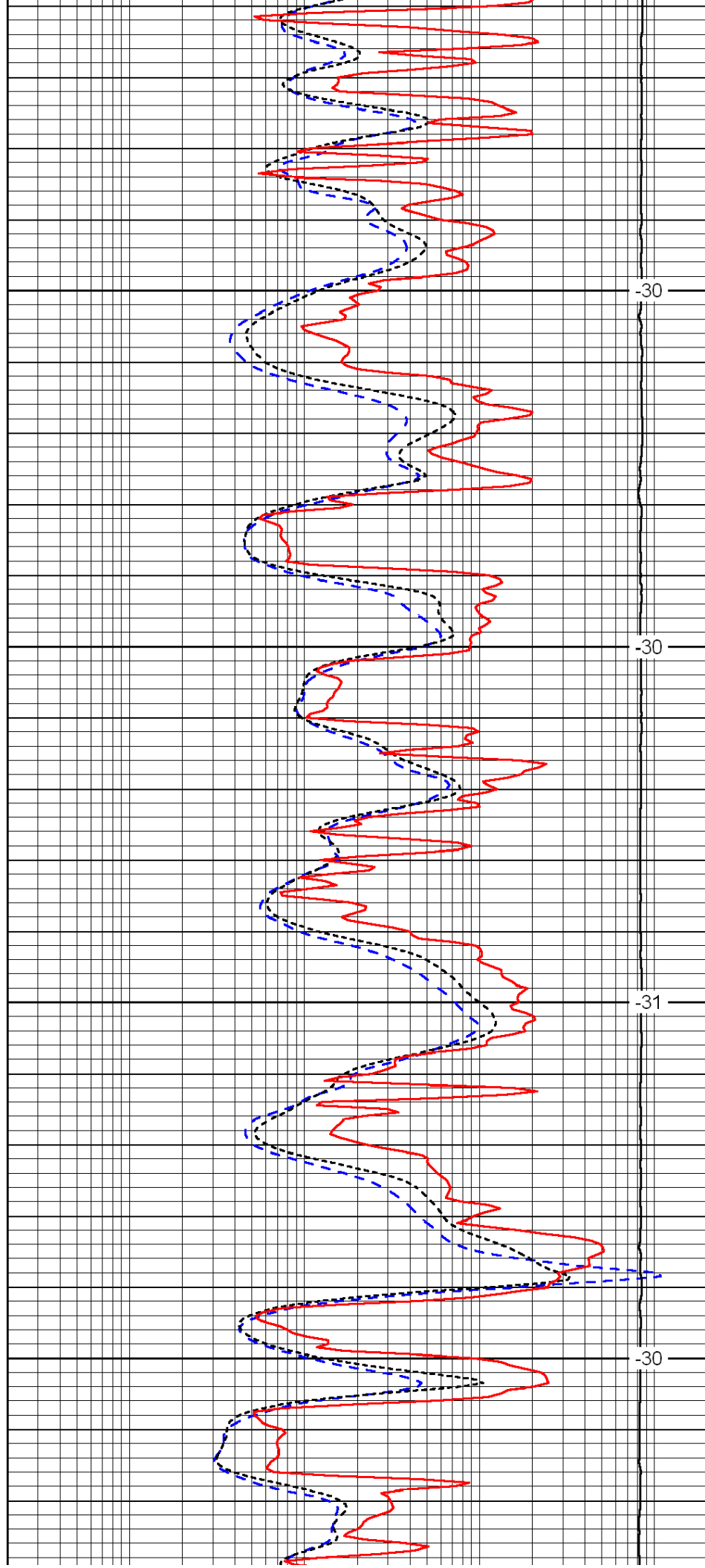


4350

4400

4450

4500

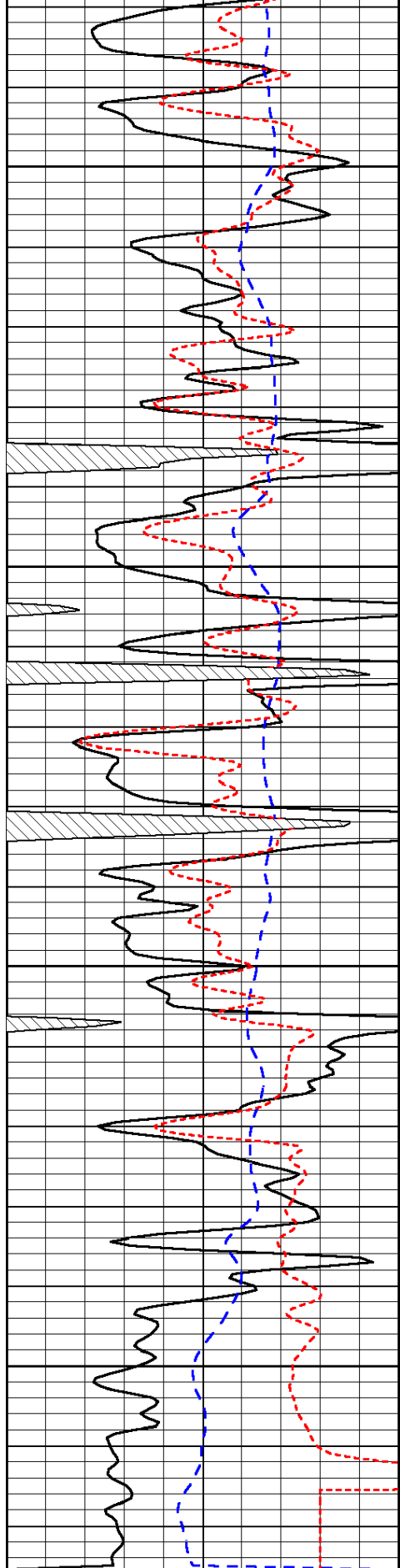


-30

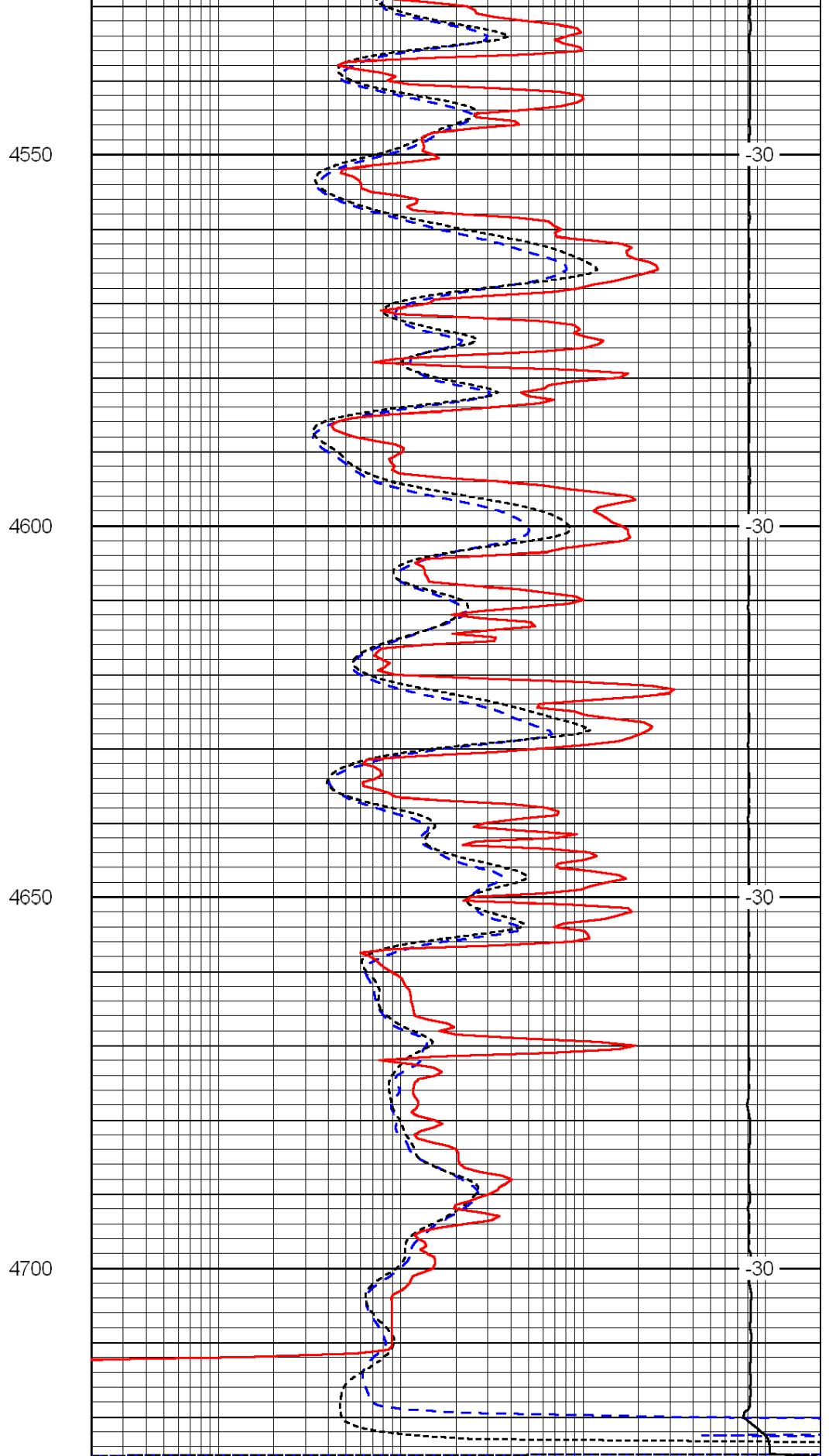
-30

-31

-30



0	Gamma Ray	150
-200	SP (mV)	0
-160	Rxo / Rt	40



0.2	Deep Resistivity	2000
0.2	Medium Resistivity	2000
0.2	Shallow Resistivity	2000
15000	Line Tension	0

