



**Borehole Compensated  
Sonic Log**

**DIGITAL LOG (785) 625-3858**

API No.	15-039-21,130-00-00		
Company	Murfin Drilling Company, Inc.		
Well	May 'B' No. 1-13		
Field	Wildcat		
County	Decatur		
State	Kansas		
Location	660' FNL & 800' FEL		
Sec: 13	Twp: 2 S	Rge: 30 W	
Permanent Datum	Ground Level	Elevation 2787	Other Services CNL/CDL MEL/DIL
Log Measured From	Kelly Bushing	5 Ft. Above Perm. Datum	
Drilling Measured From	Kelly Bushing		Elevation K.B. 2792 D.F. 2787 G.L. 2787

Date	3/10/2011
Run Number	Two
Type Log	BHC Sonic
Depth Driller	4110
Depth Logger	4109
Bottom Logged Interval	4098
Top Logged Interval	250
Type Fluid In Hole	Chemical
Salinity, PPM CL	1,200
Density	9.1
Level	Full
Max. Rec. Temp. F	119
Operating Rig Time	5 1/2 Hours
Equipment -- Location	4 Hays
Recorded By	K. Bange
Witnessed By	Paul Gunzelman

Borehole Record				Casing Record			
Run No.	Bit	From	To	Size	Wgt.	From	To
1	12.25	00	279	8.625	24#	00	279
2	7.875	276	4110				

<<< Fold Here >>>

All interpretations are opinions based on inferences from electrical or other measurements and we cannot and do not guarantee the accuracy or correctness of any interpretation, and we shall not, except in the case of gross or willful negligence on our part, be liable or responsible for any loss, costs, damages, or expenses incurred or sustained by anyone resulting from any interpretation made by any of our officers, agents or employees. These interpretations are also subject to our general terms and conditions set out in our current Price Schedule.

**Comments**

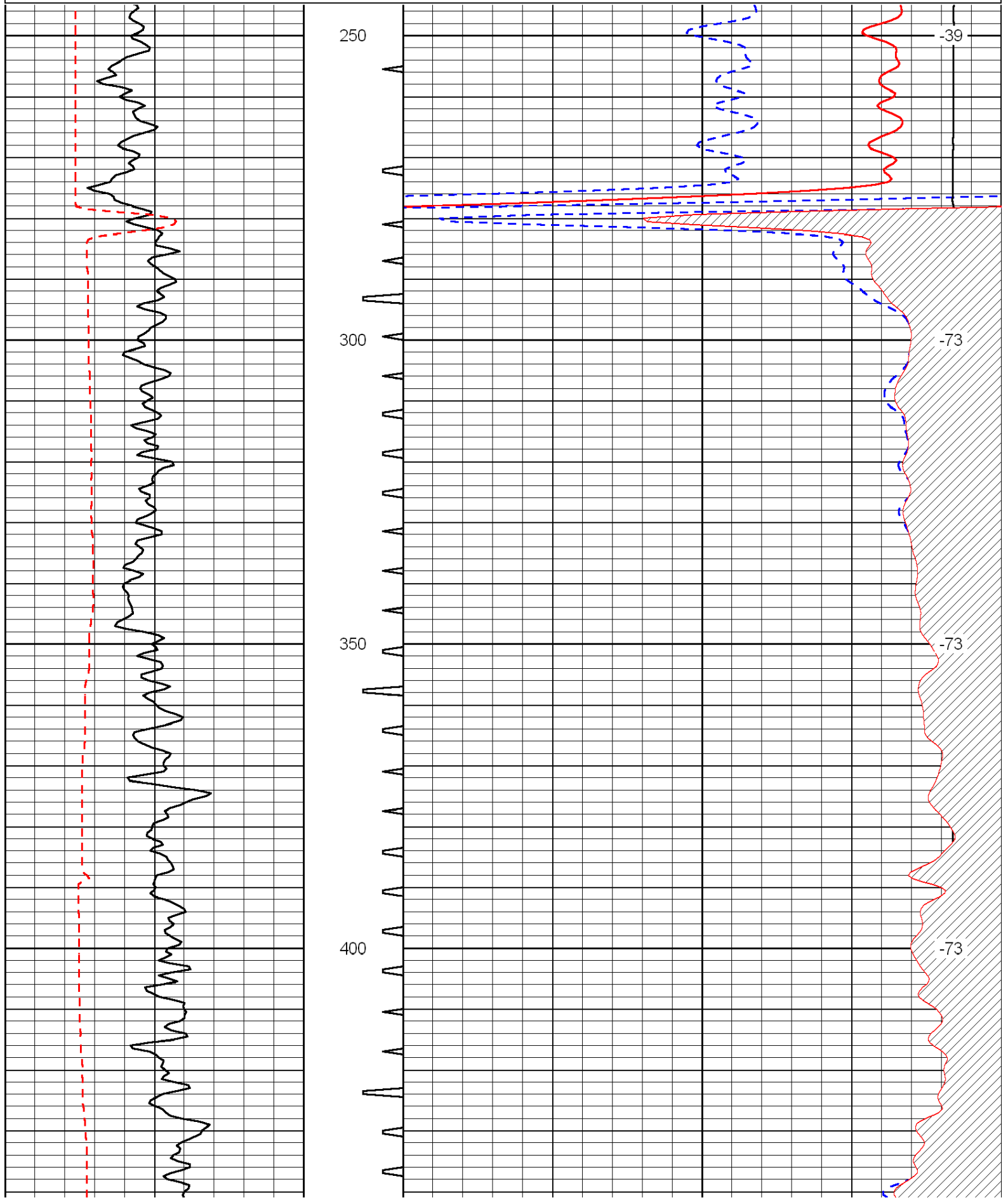
Thank you for using Log-Tech, Inc.  
(785) 625-3858

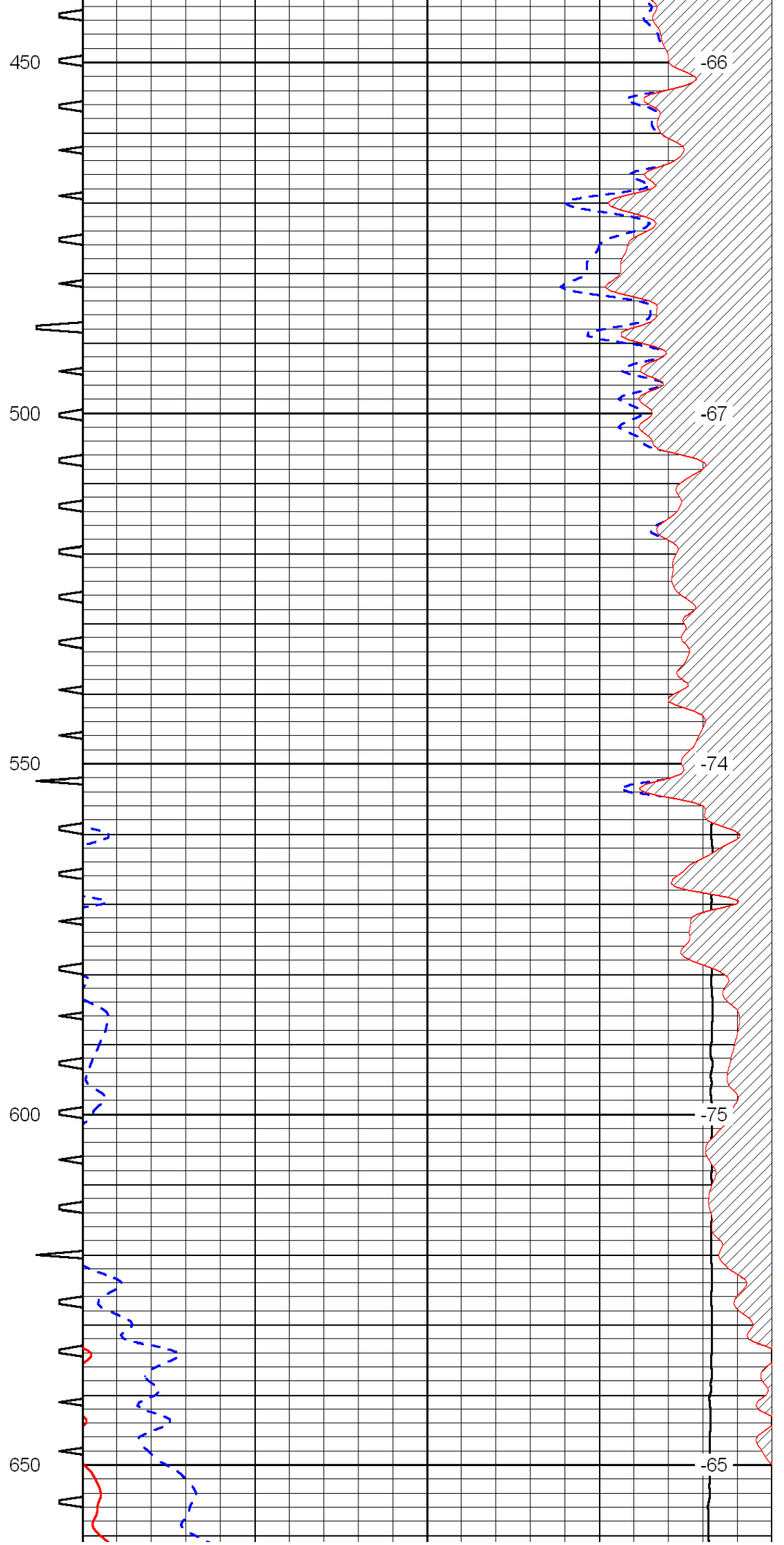
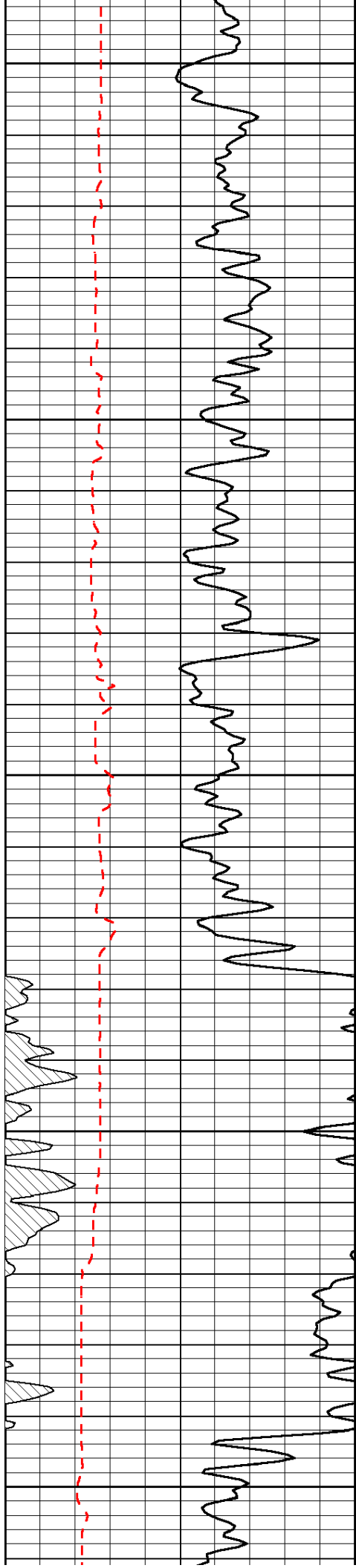
Oberlin, 5 w, 3 1/2 N, W into

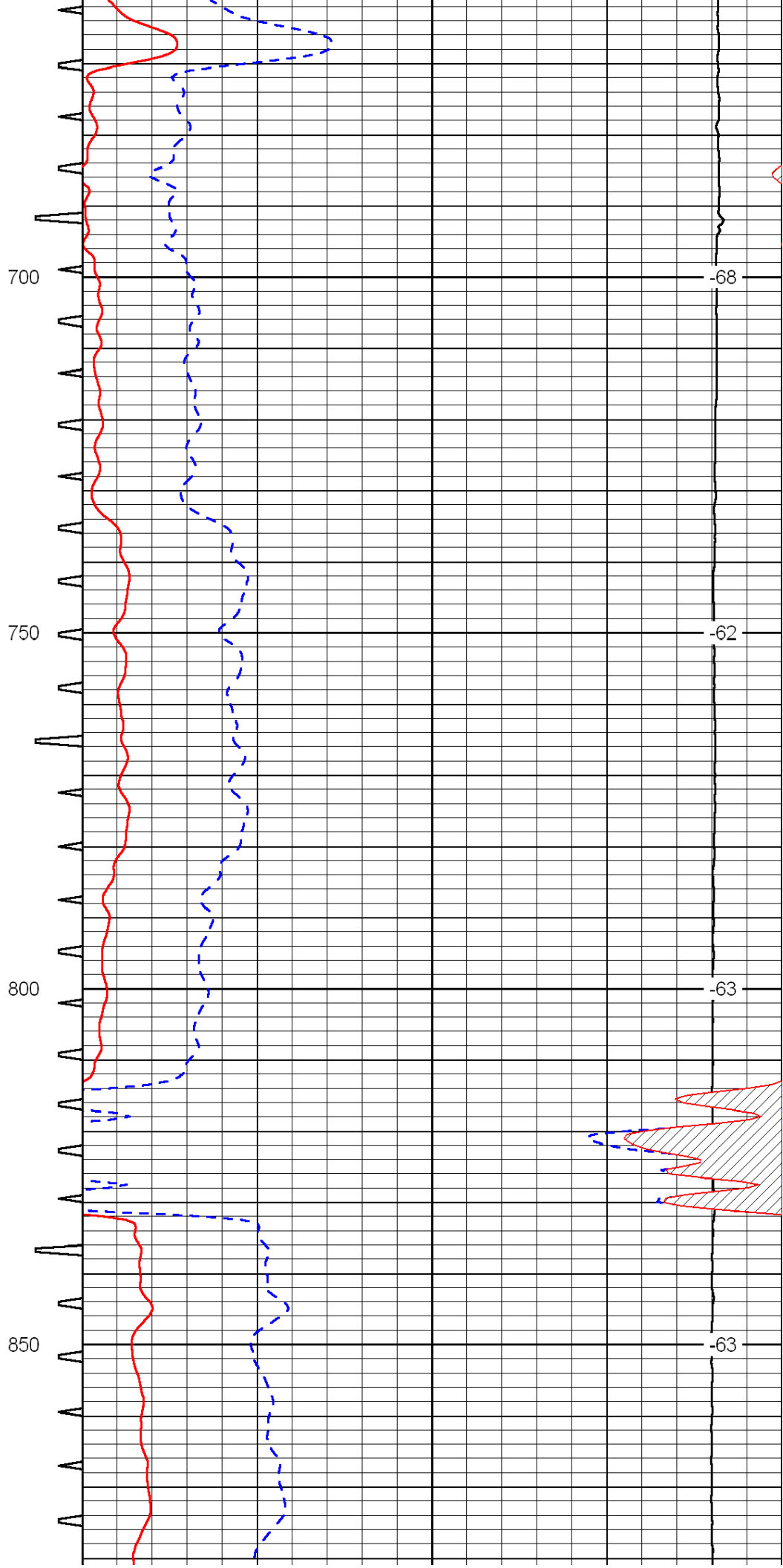
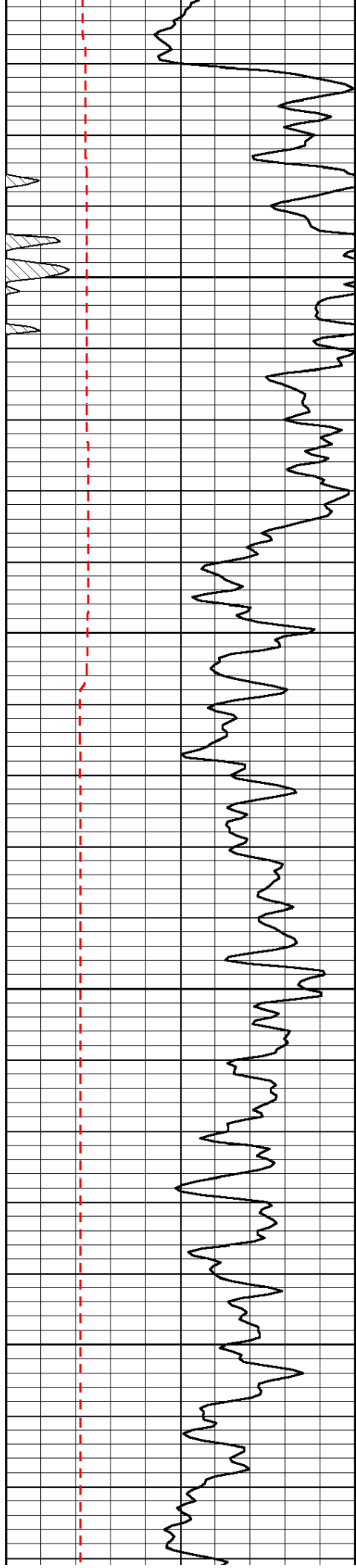
Database File: c:\warrior\data\murfin\_may 'b' no. 1-13\murfin031111hd.db  
 Dataset Pathname: dil/murfstk  
 Presentation Format: sonic  
 Dataset Creation: Thu Mar 10 21:55:55 2011  
 Charted by: Depth in Feet scaled 1:240

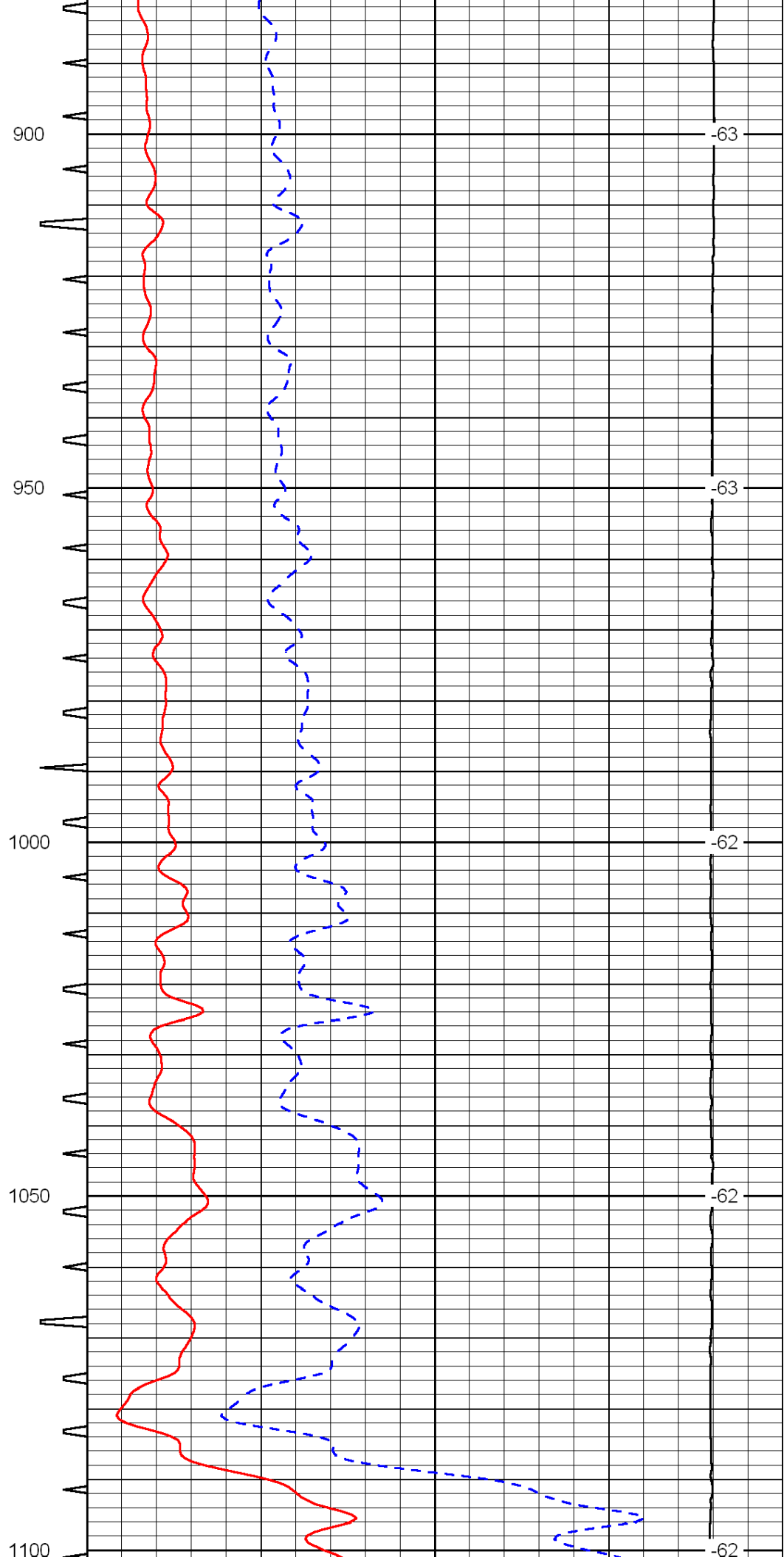
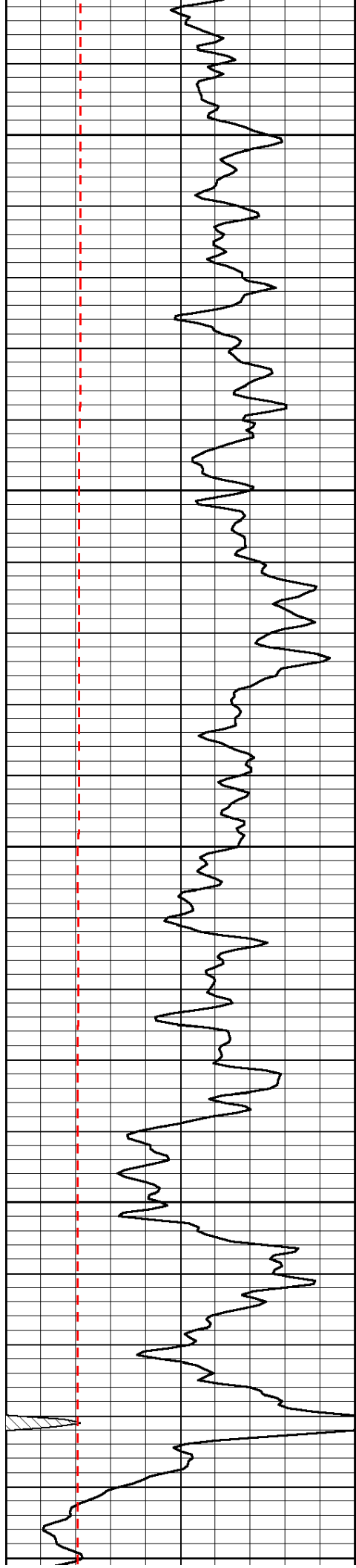
0	Gamma Ray	150	Sonic Int	140	Delta Time (usec/ft)	40
150	Gamma Ray	300	5	0	SPOR	-10
6	Caliper (GAPI)	16		15000	LTEN (lb)	0

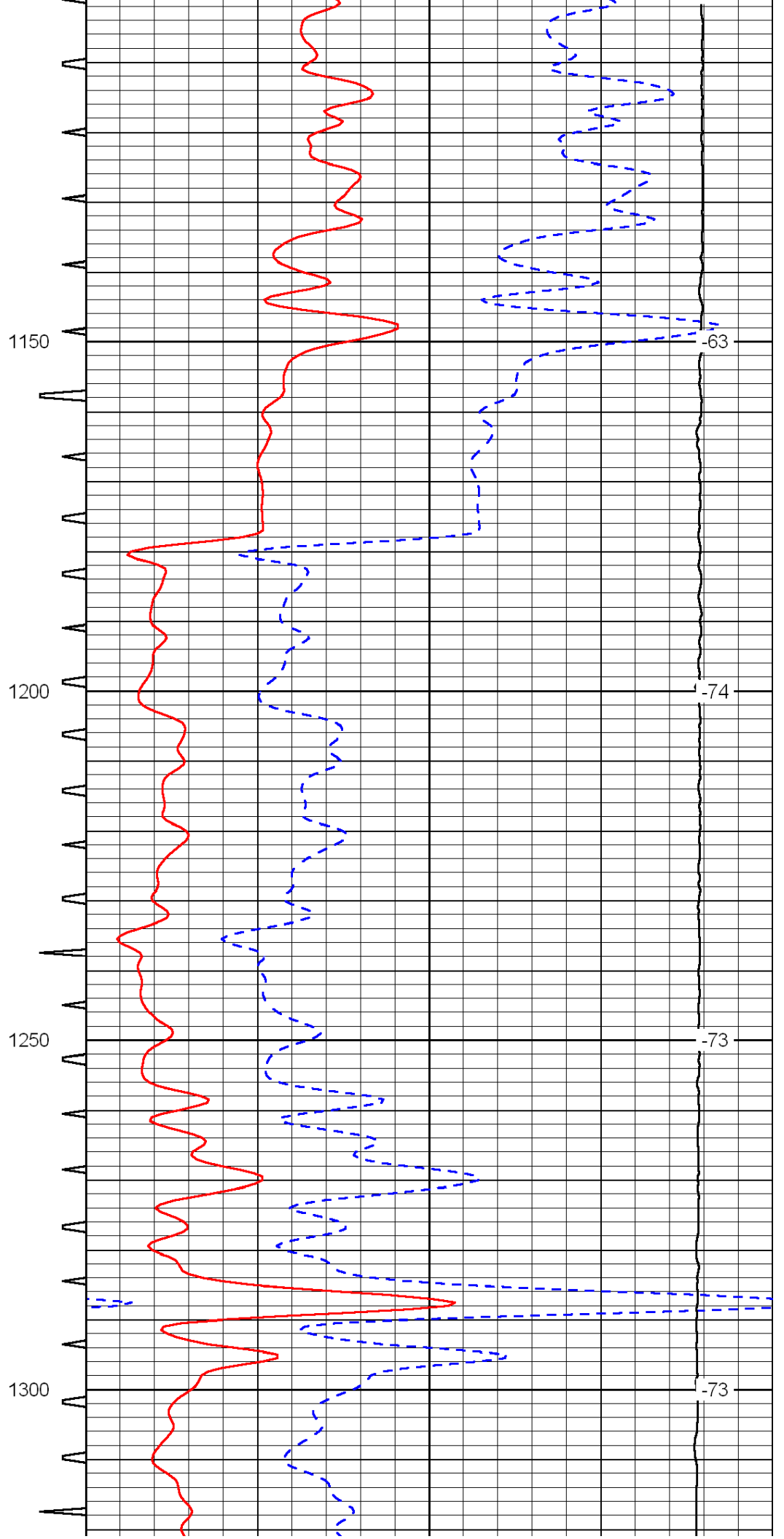
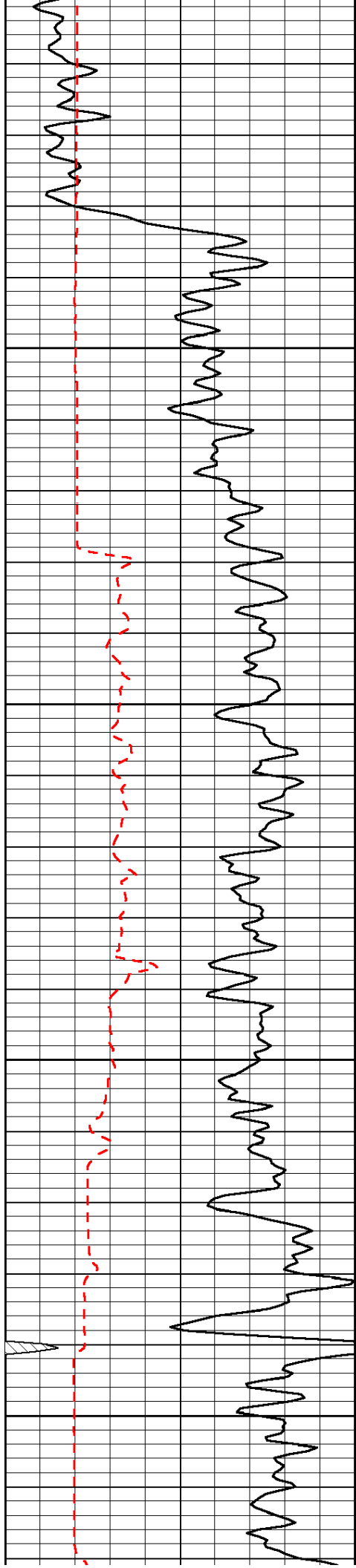
LSPD

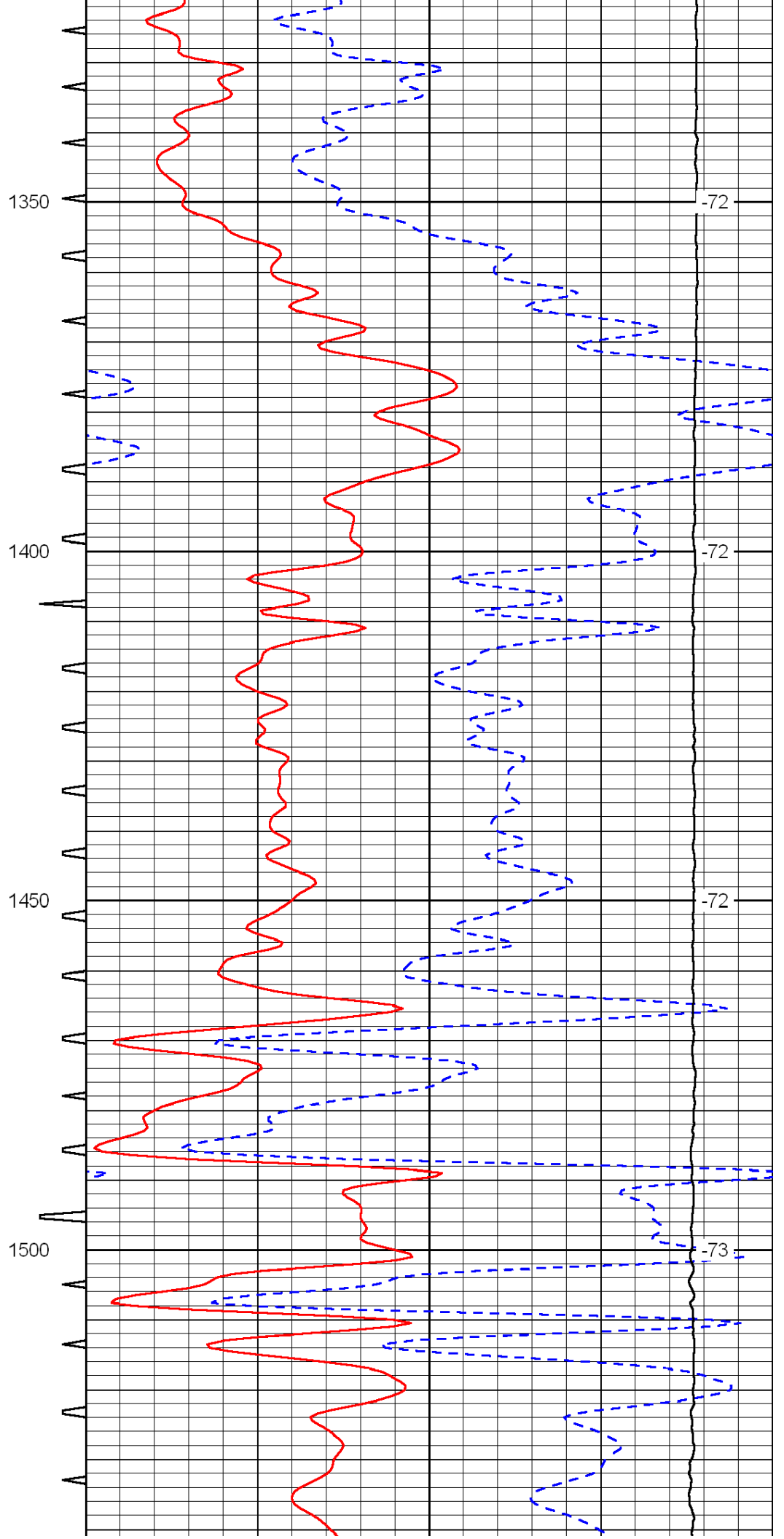
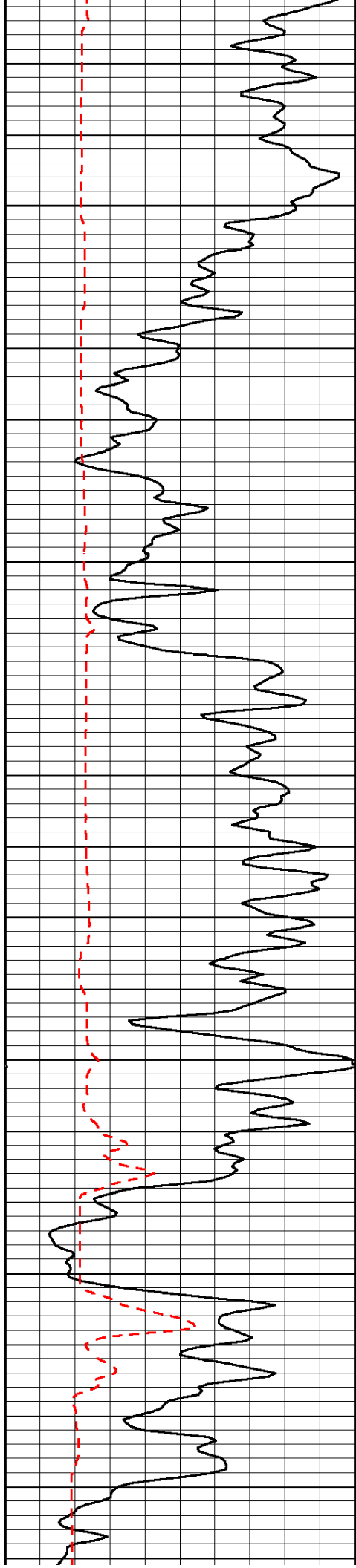


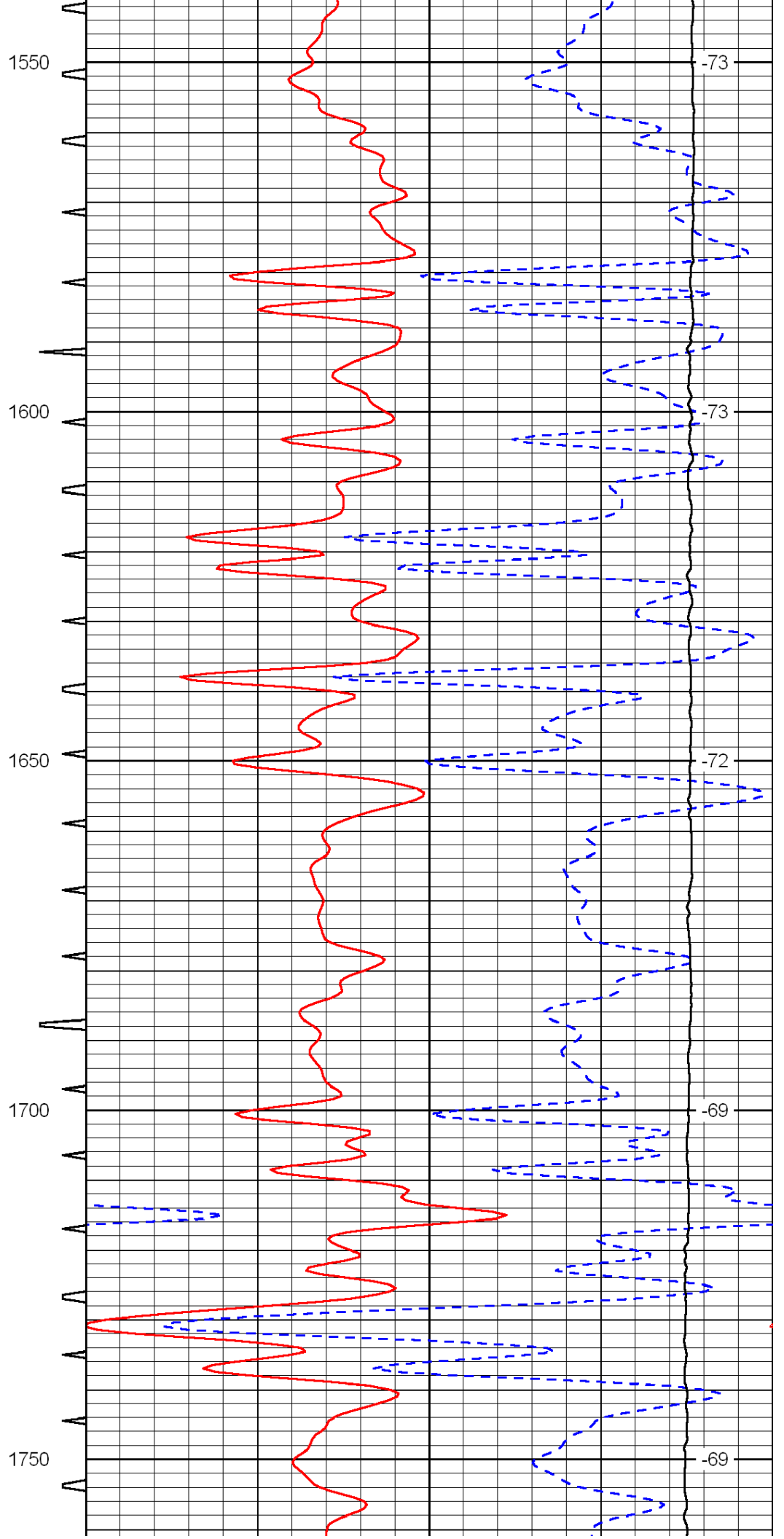
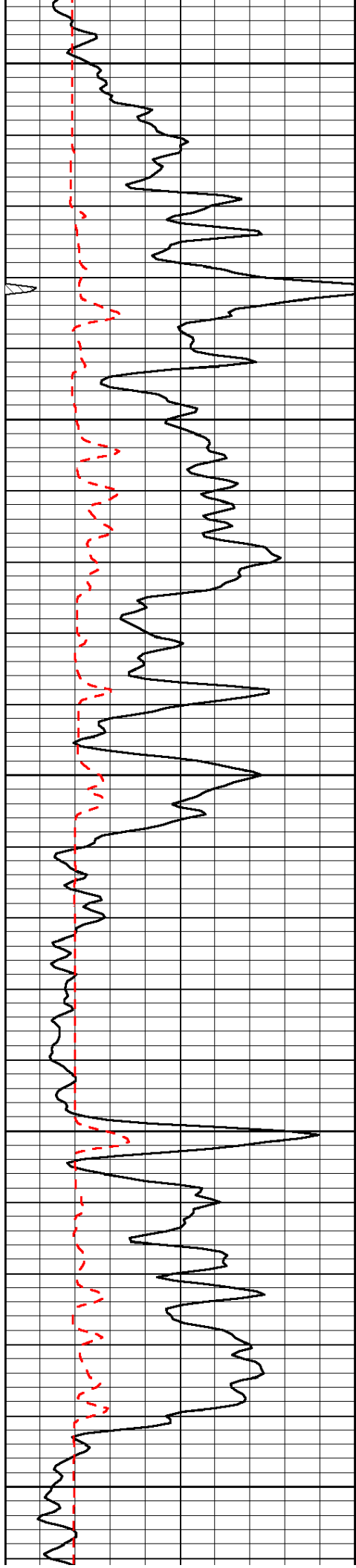


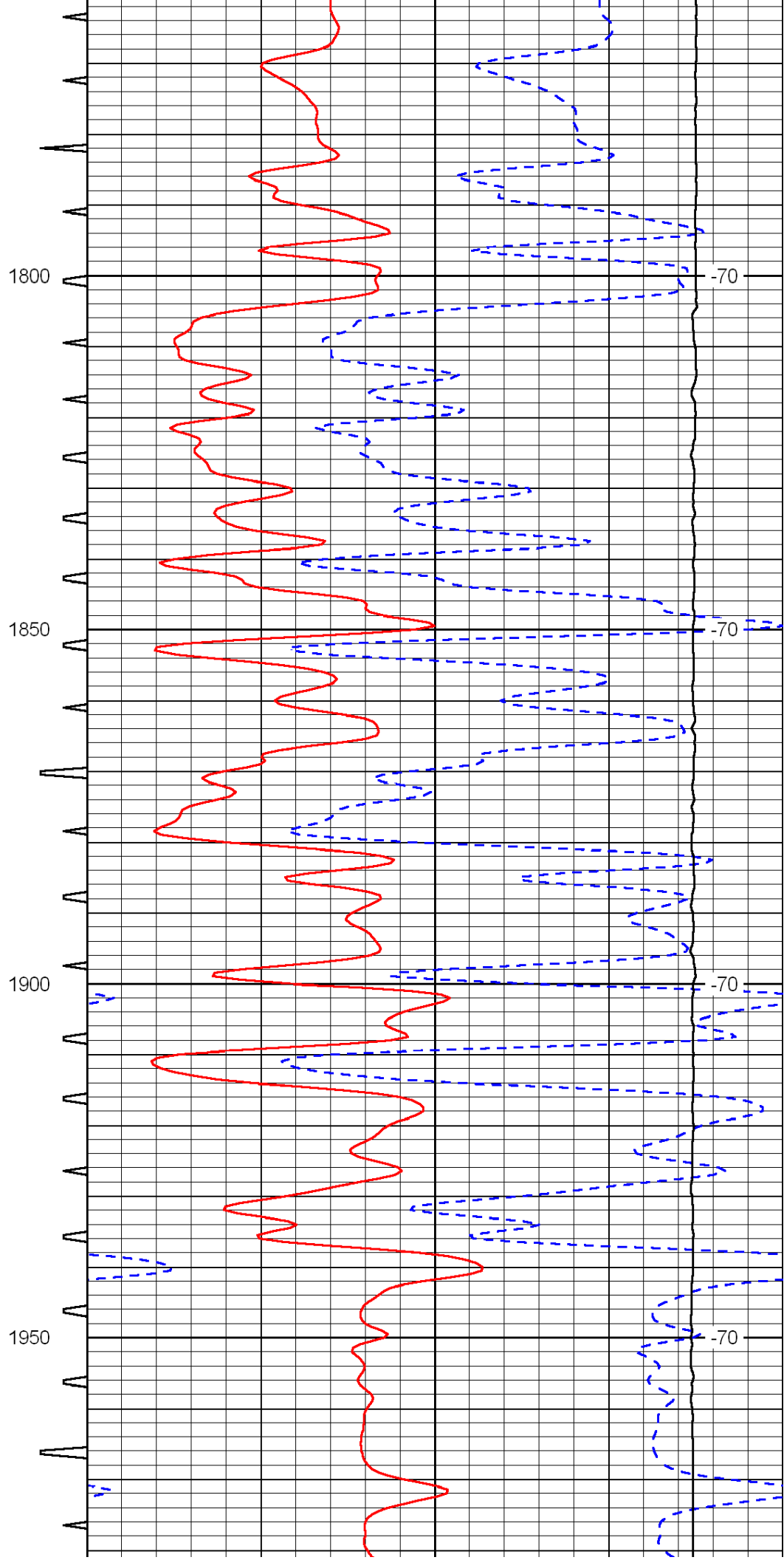
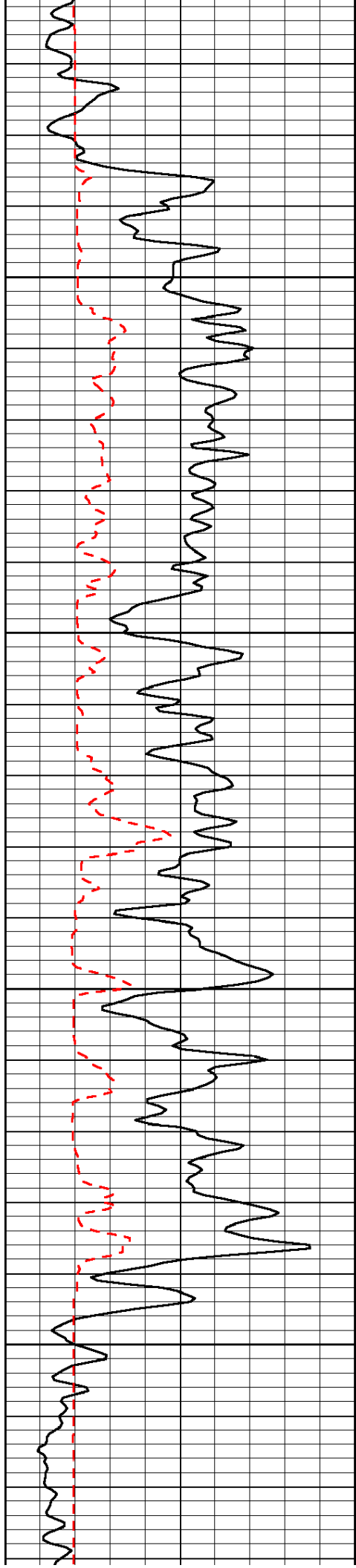


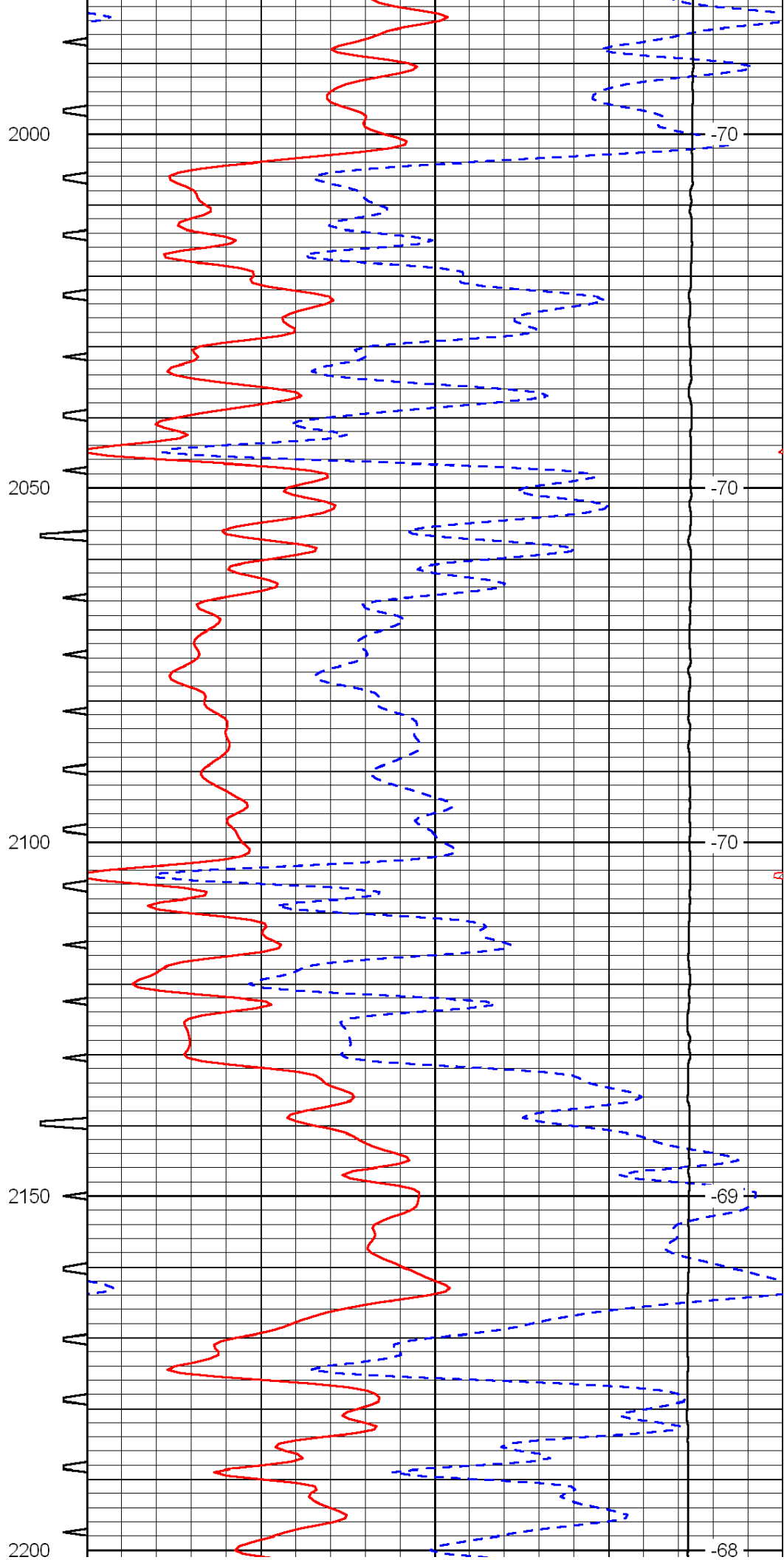
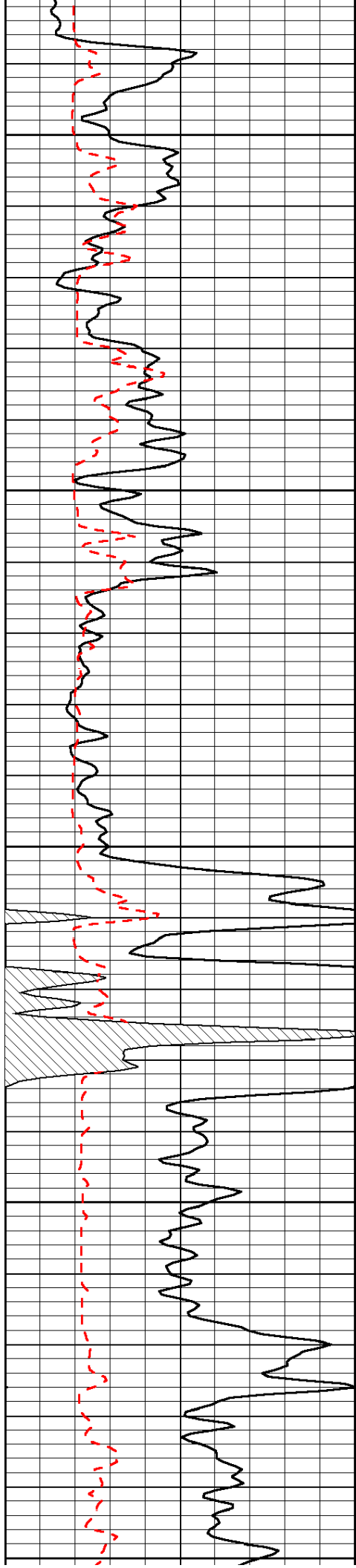


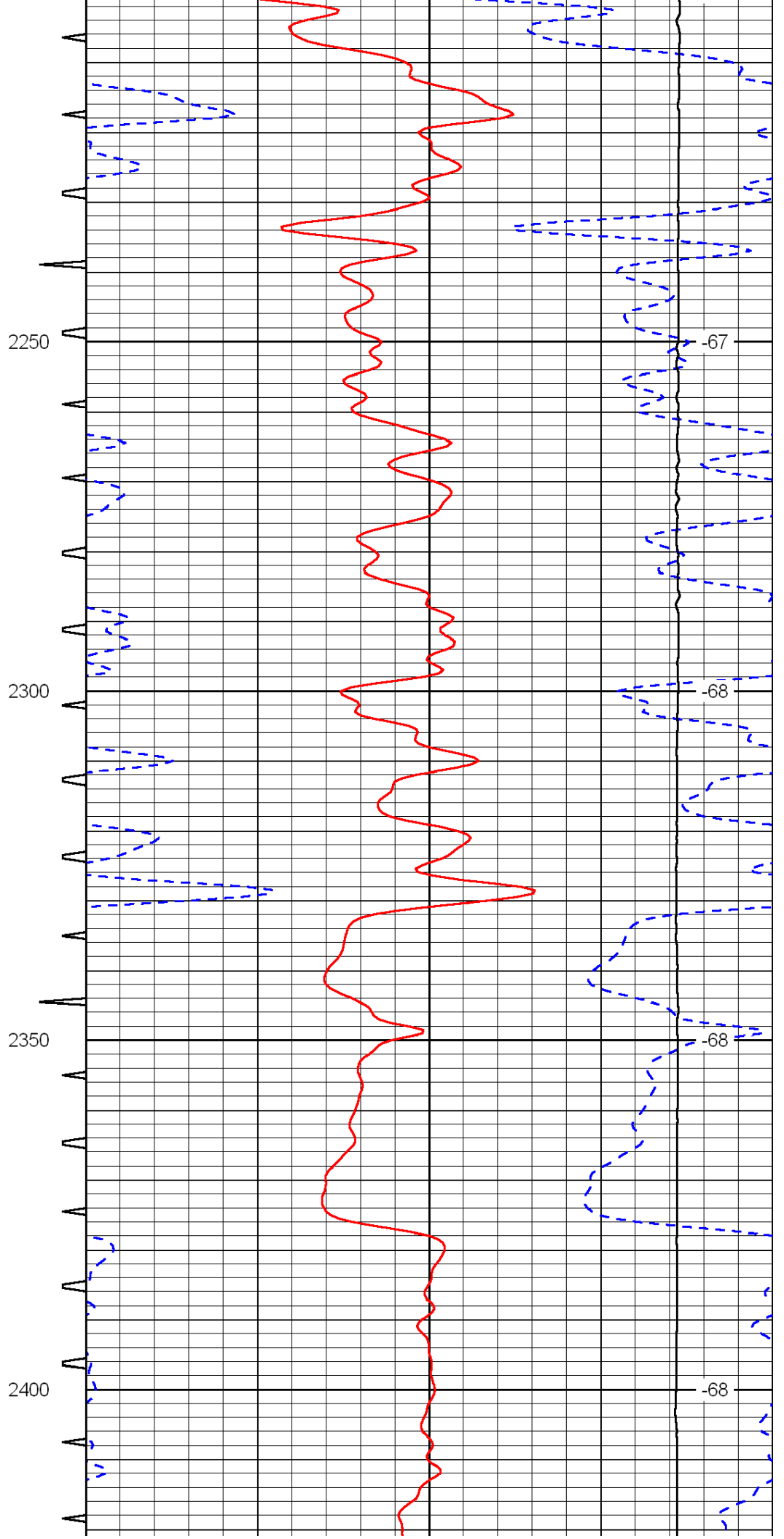
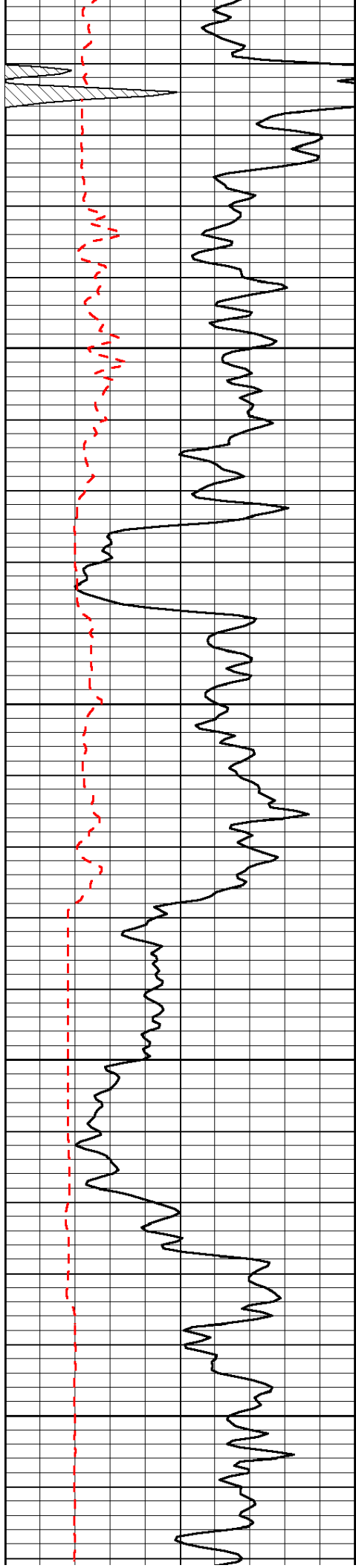


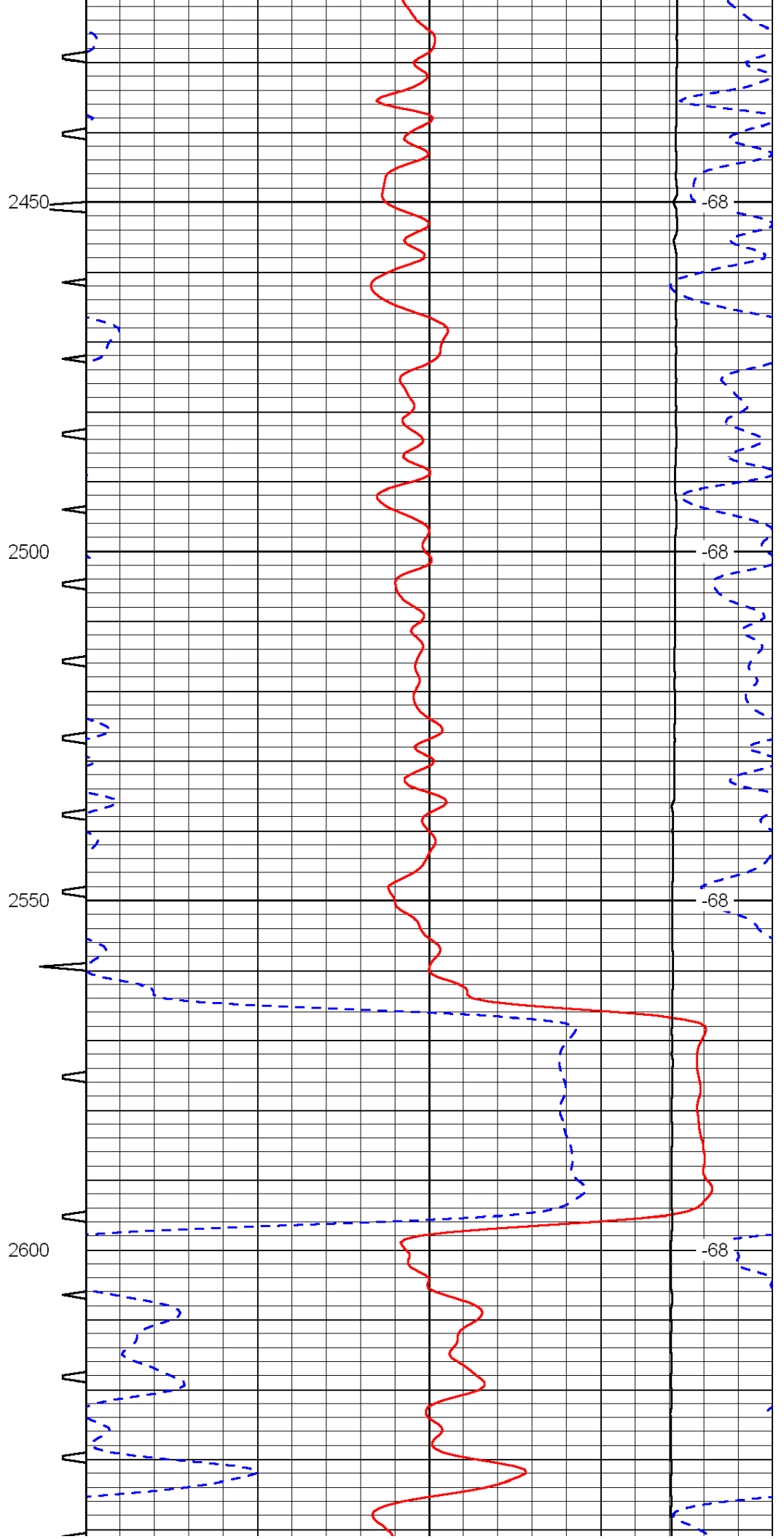
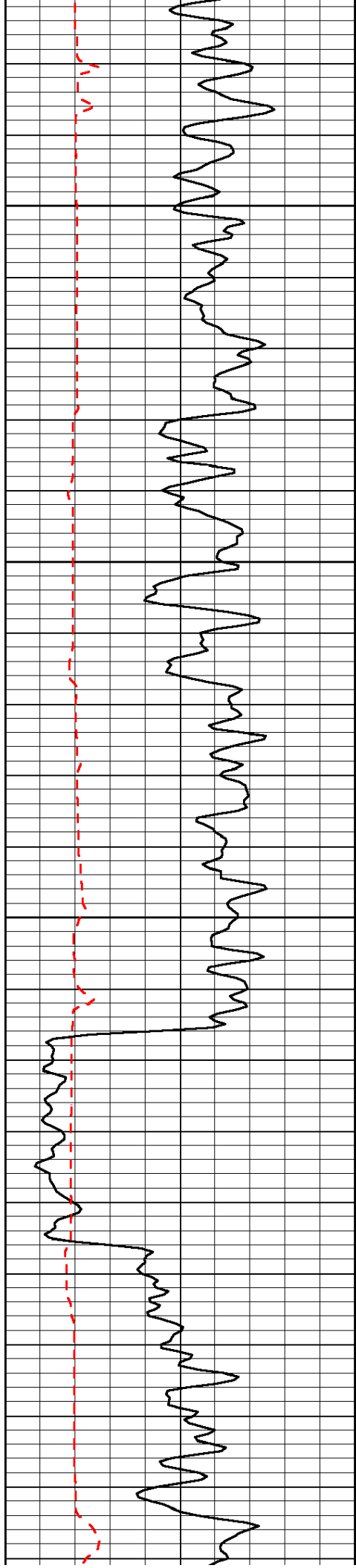


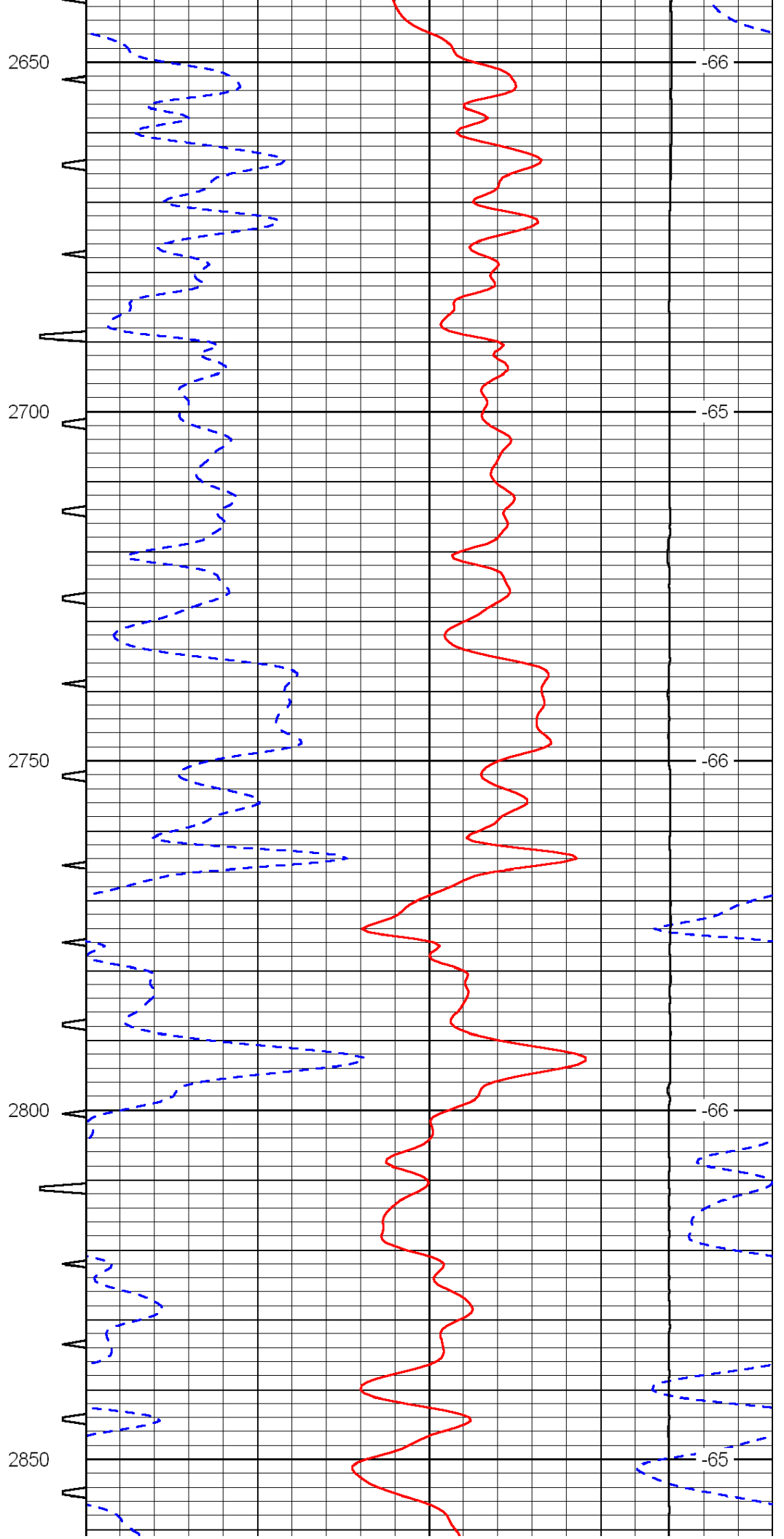
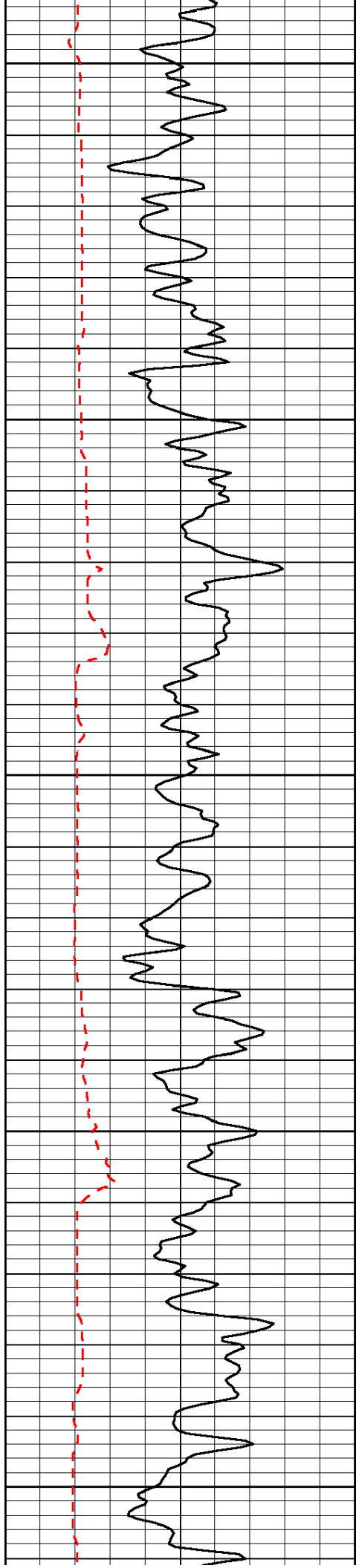


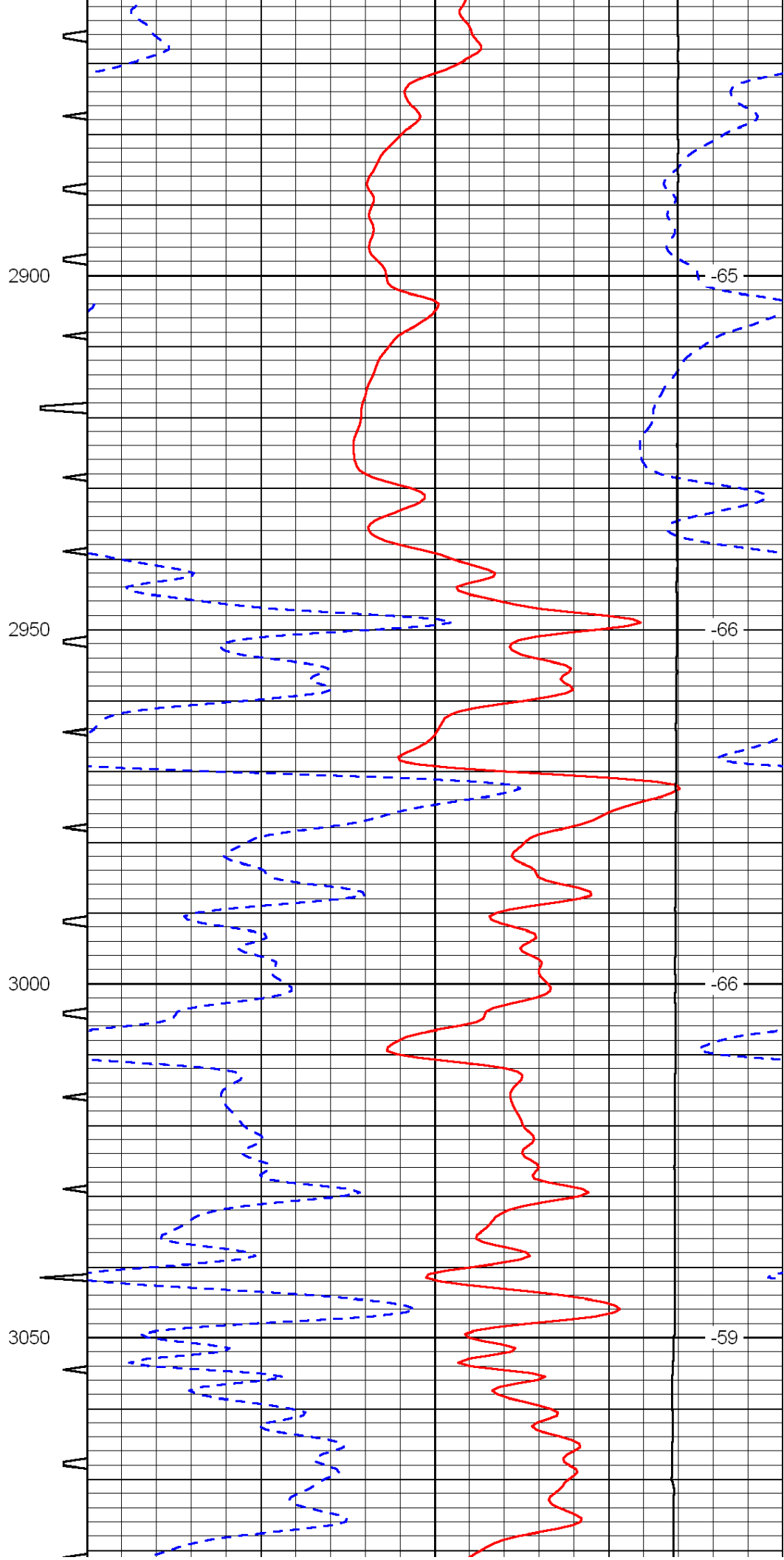
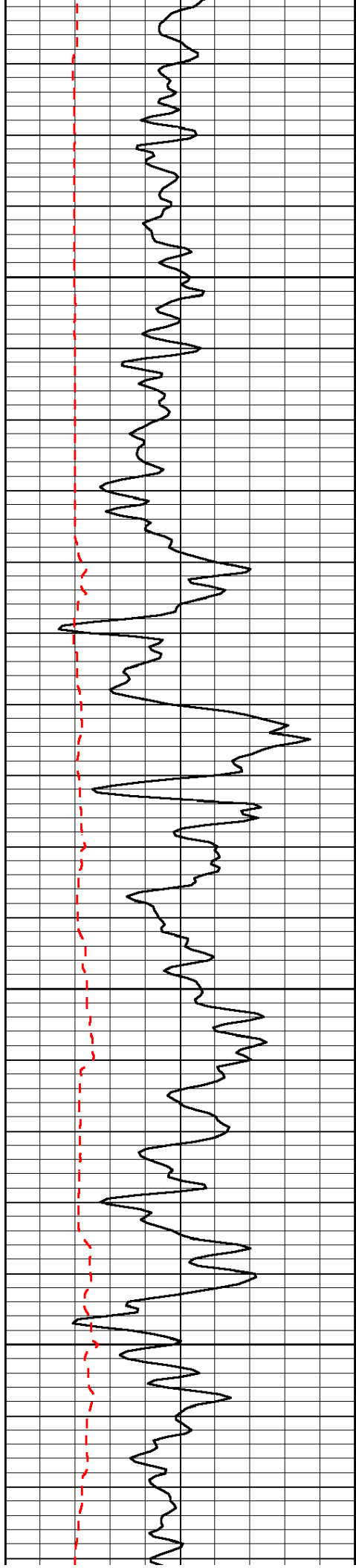


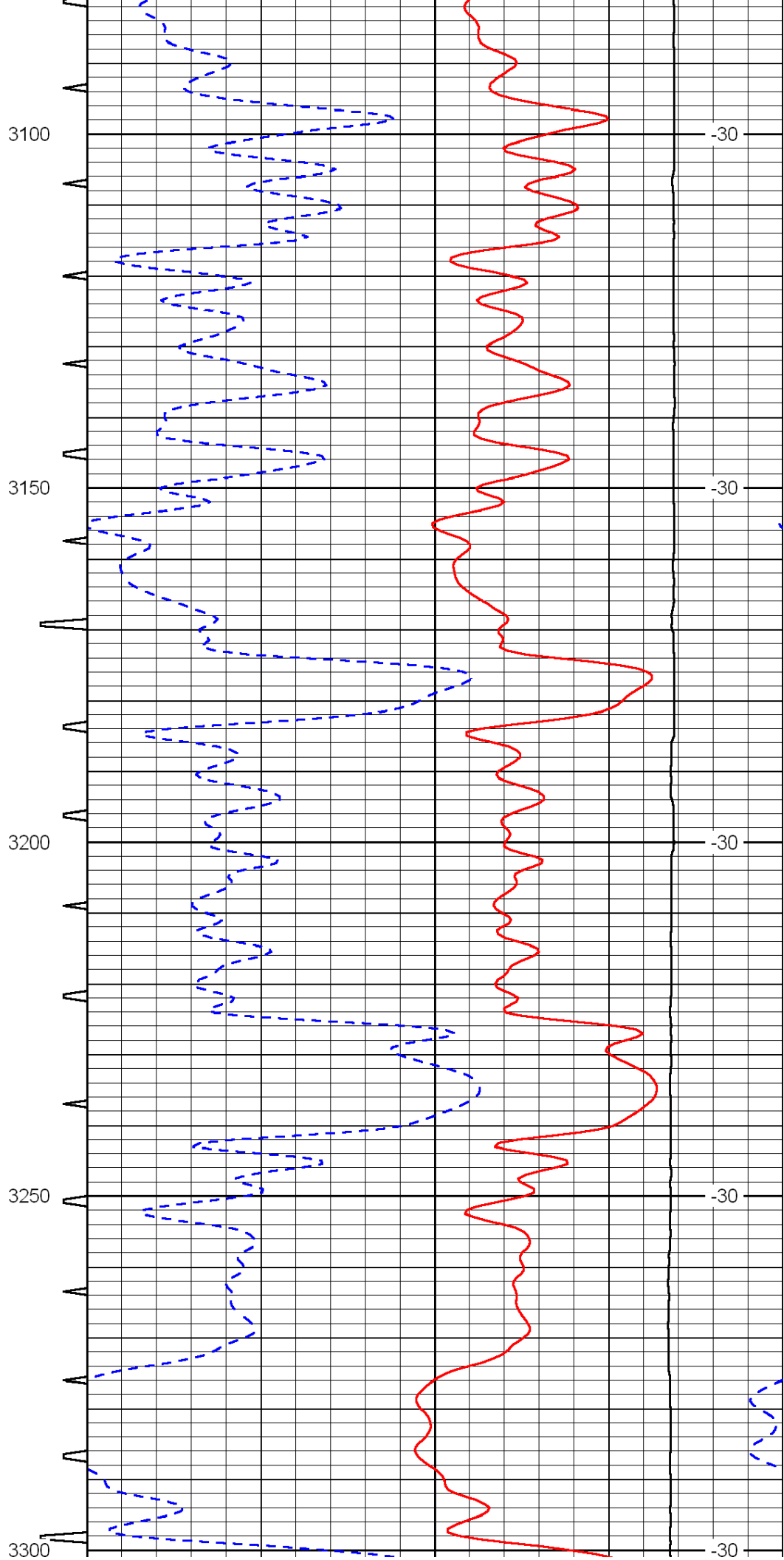
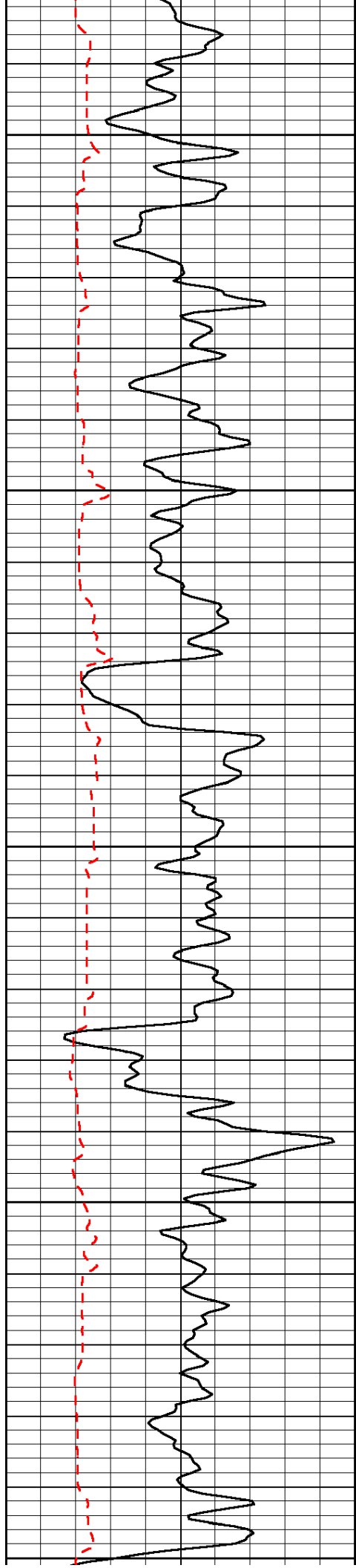


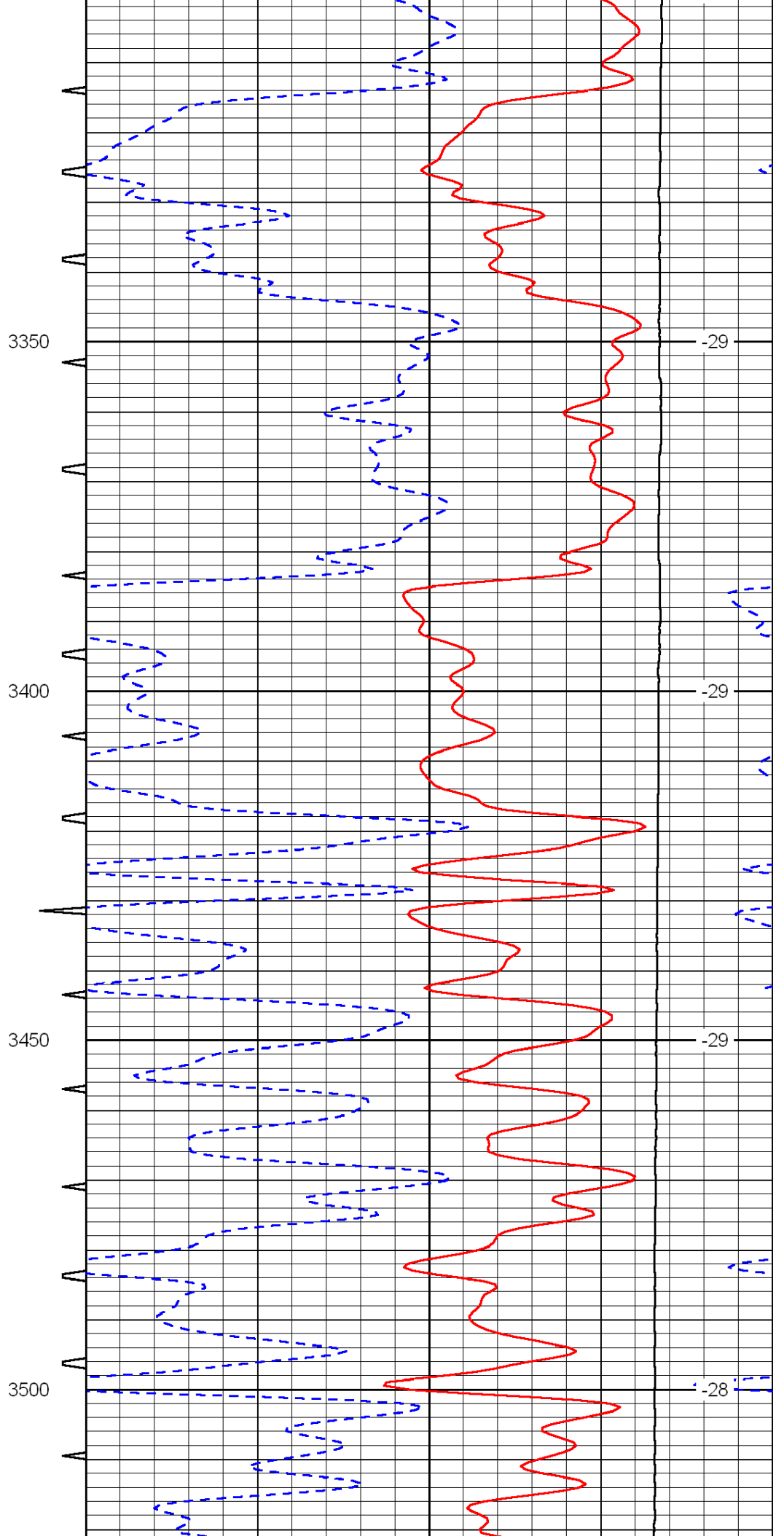
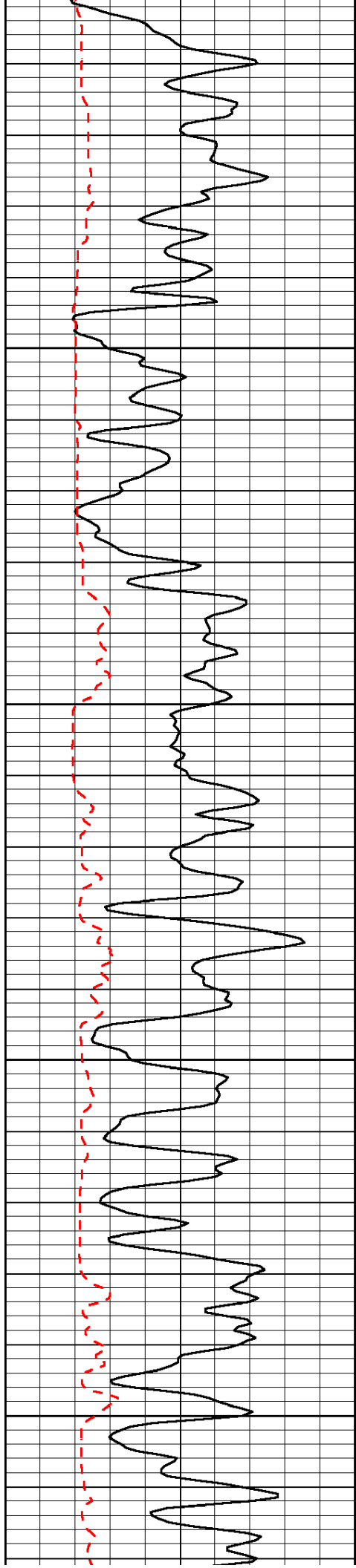


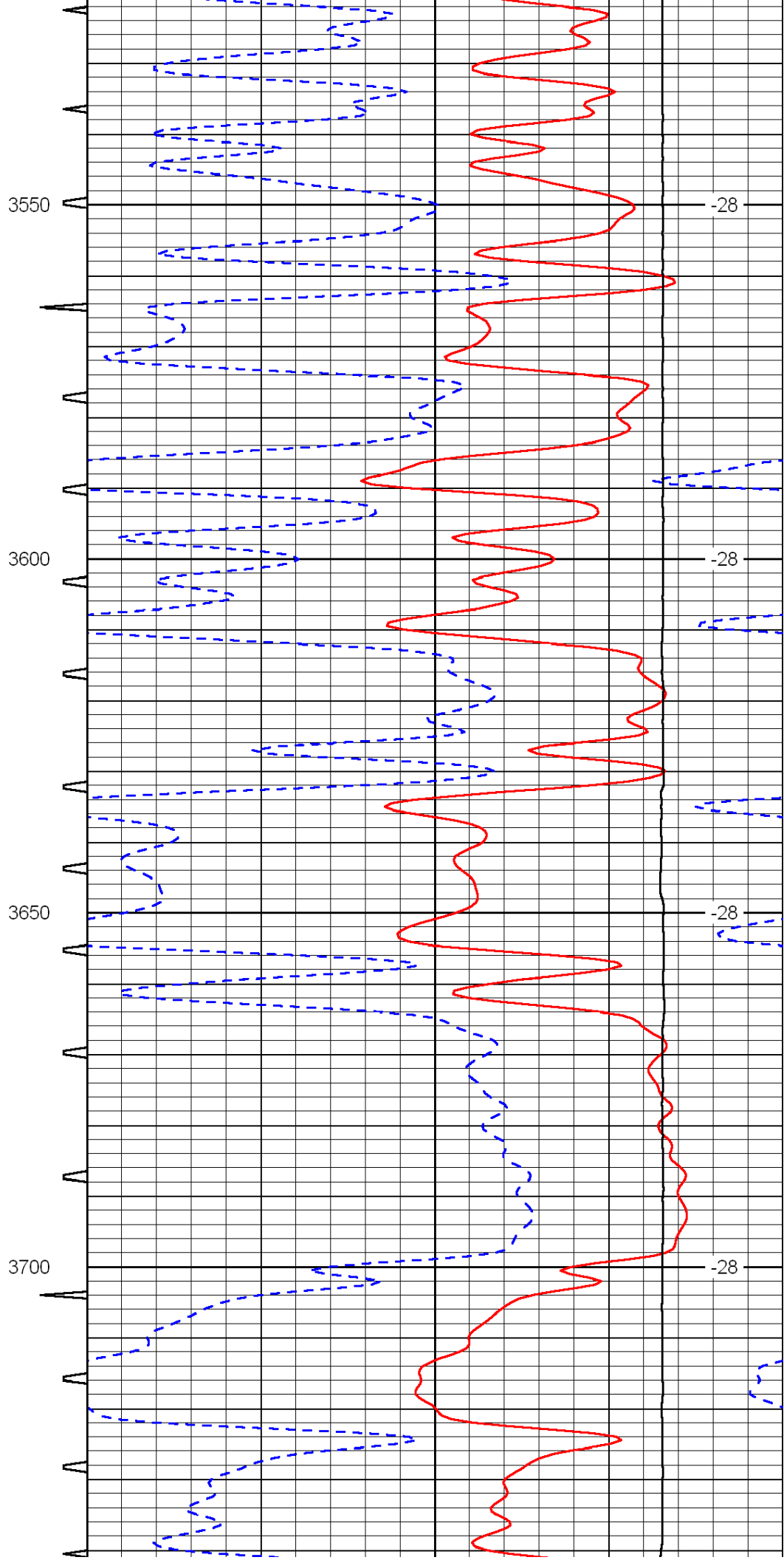
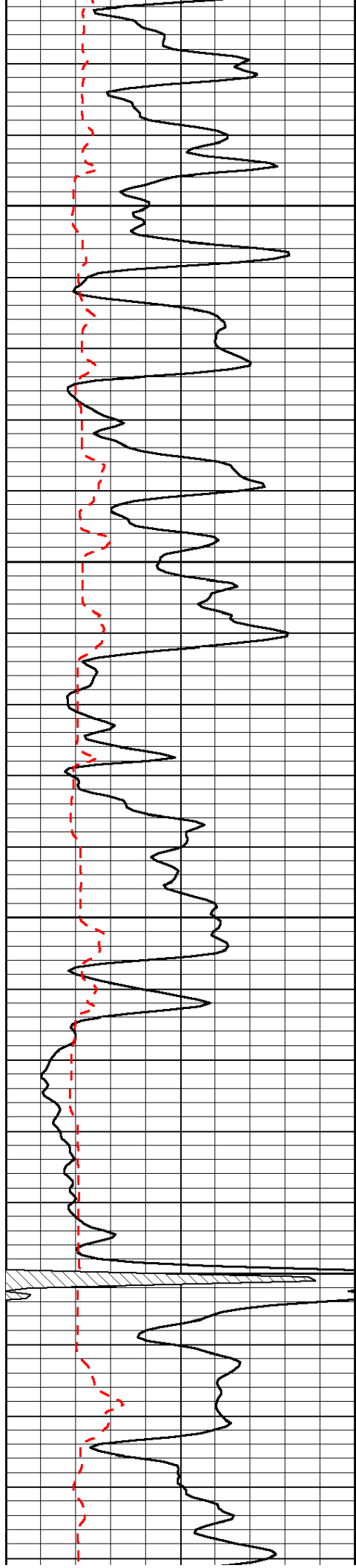


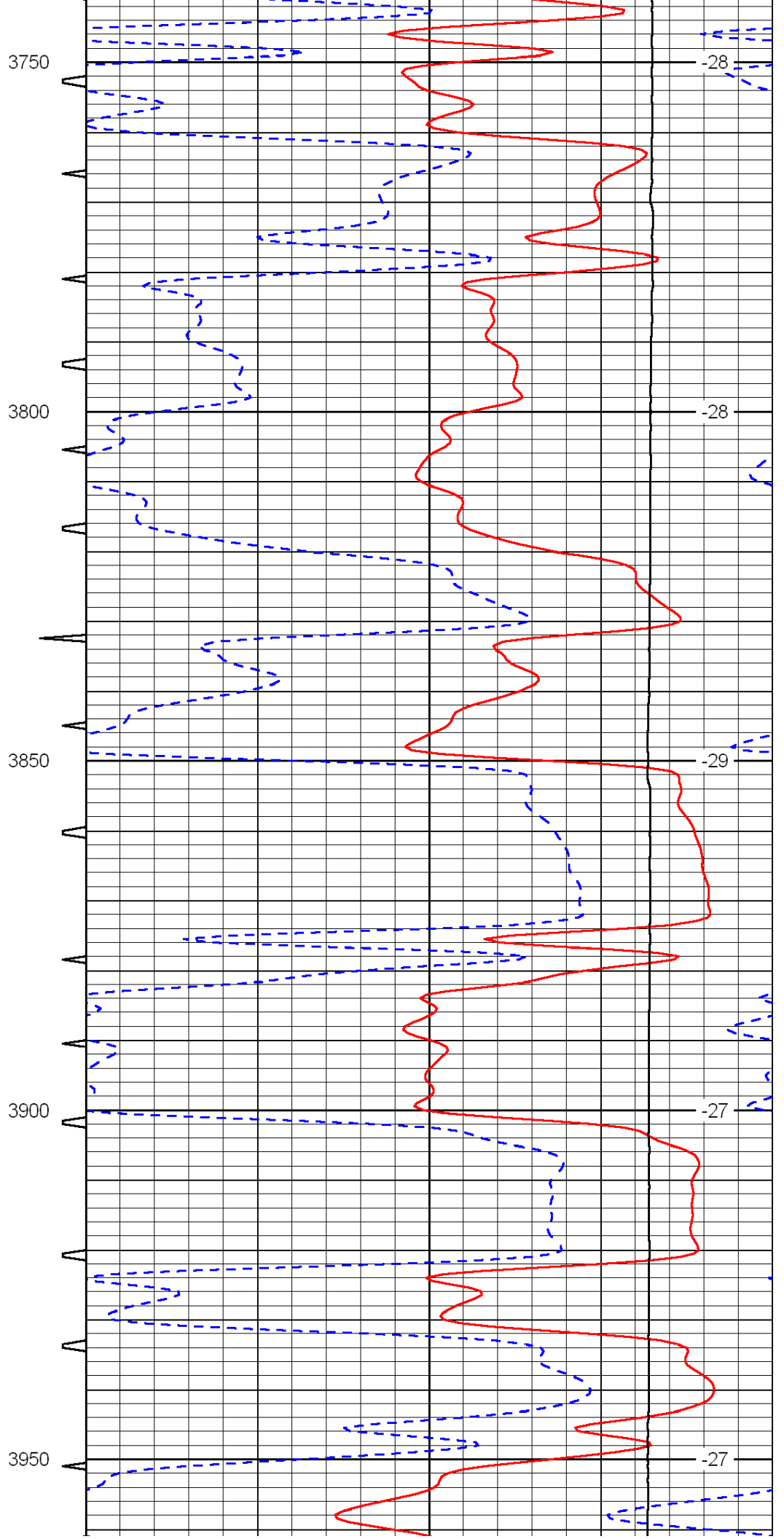
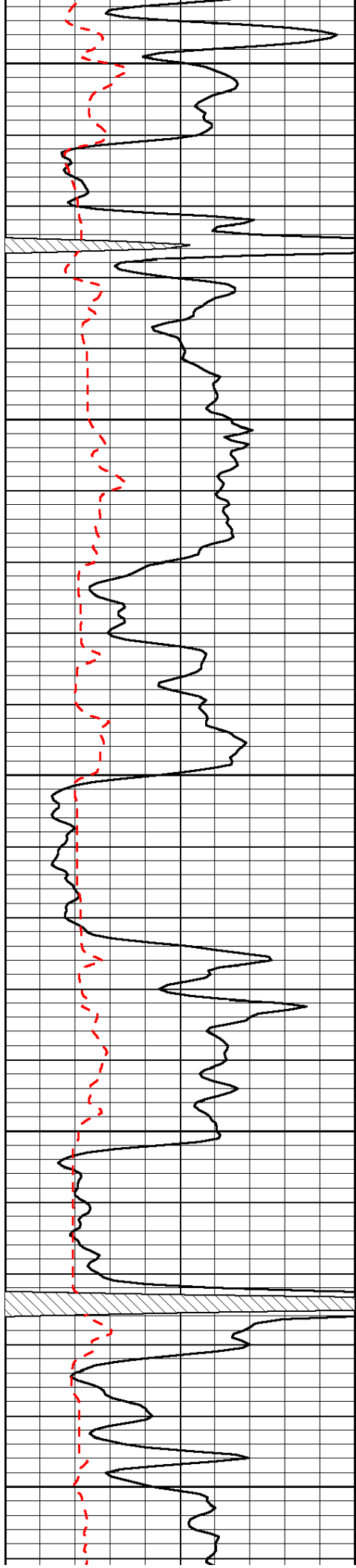


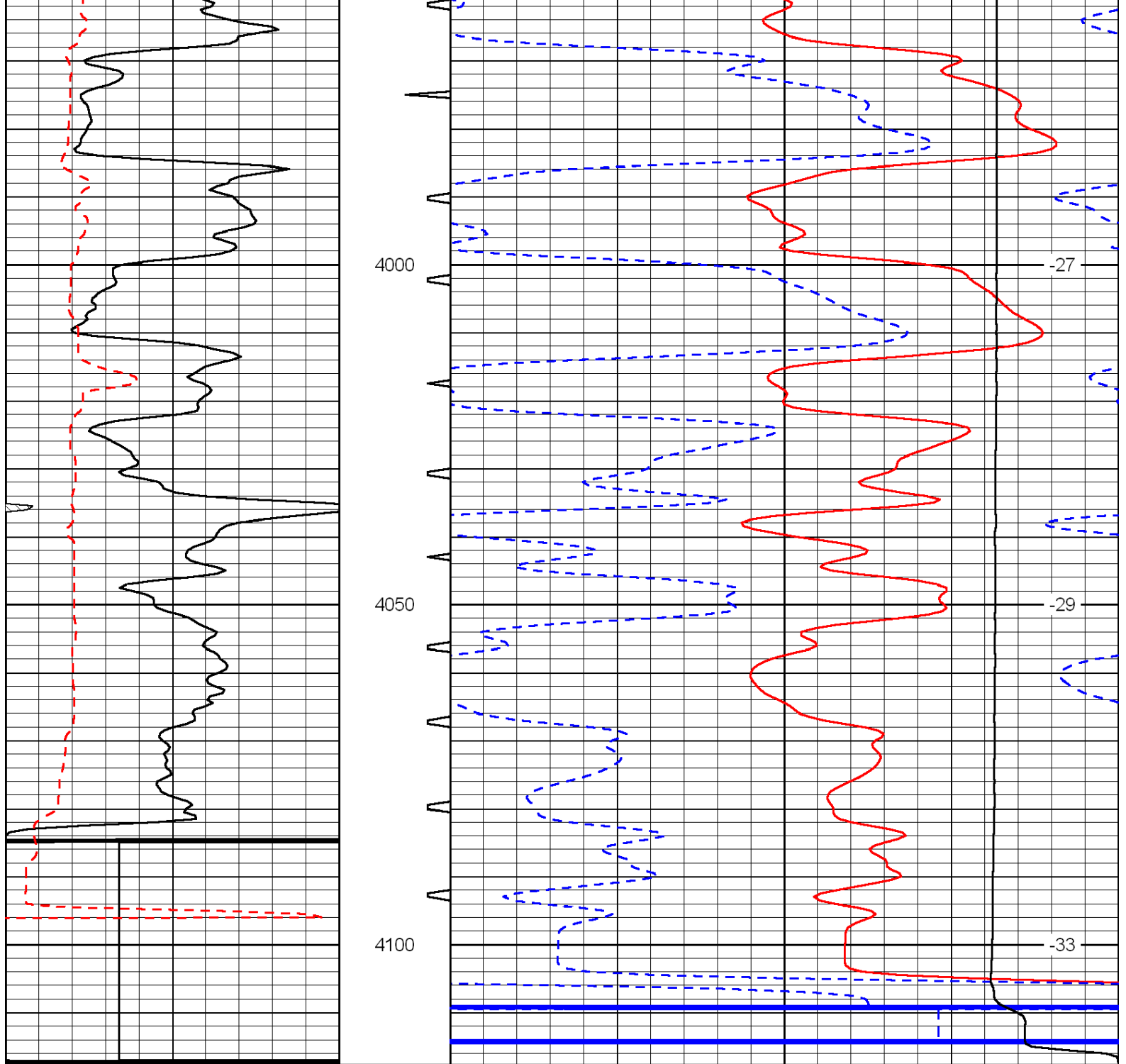












0	Gamma Ray	150	Sonic Int	140	Delta Time (usec/ft)	40
150	Gamma Ray	300	5	0	SPOR	-10
6	Caliper (GAPI)	16		15000	LTEN (lb)	0
LSPD						