



**DIGITAL LOG** (785) 625-3858

Dual Induction Log

API No. 15-101-22279-00-00

Company Larson Engineering, Inc.  
 Well Kim No. 1-17  
 Field Wildcat  
 County Lane State Kansas

Location NE - NW - SW - NW  
 1617' FNL & 586' FWL

Other Services  
 CNL/CDL  
 MEL

Permanent Datum Ground Level Elevation 2849  
 Log Measured From Kelly Bushing 7 Ft. Above Perm. Datum  
 Drilling Measured From Kelly Bushing

Sec: 17 Twp: 19 S Rge: 29 W

Elevation  
 K.B. 2856  
 D.F. 2849  
 G.L. 2849

Date	3/10/2011
Run Number	One
Depth Driller	4680
Depth Logger	4682
Bottom Logged Interval	4681
Top Log Interval	250
Casing Driller	8.625 @ 261
Casing Logger	258
Bit Size	7.875
Type Fluid in Hole	Chemical
Salinity, ppm CL	2100
Density / Viscosity	9.3 50
pH / Fluid Loss	10.5 7.2
Source of Sample	Flowline
Rm @ Meas. Temp	1.50 @ 60
Rmf @ Meas. Temp	1.13 @ 60
Rmc @ Meas. Temp	2.03 @ 60
Source of Rmf / Rmc	Charts
Rm @ BHT	0.73 @ 123
Operating Rig Time	4 Hours
Max Rec. Temp. F	123
Equipment Number	15
Location	Hays
Recorded By	B. Becker
Witnessed By	Steve Davis

<<< Fold Here >>>

All interpretations are opinions based on inferences from electrical or other measurements and we cannot and do not guarantee the accuracy or correctness of any interpretation, and we shall not, except in the case of gross or willful negligence on our part, be liable or responsible for any loss, costs, damages, or expenses incurred or sustained by anyone resulting from any interpretation made by any of our officers, agents or employees. These interpretations are also subject to our general terms and conditions set out in our current Price Schedule.

Comments

Thank you for using Log-Tech, Inc.  
 (785) 625-3858

Dighton, Ks;  
 5 West to Gage Rd;  
 5 South; East Into

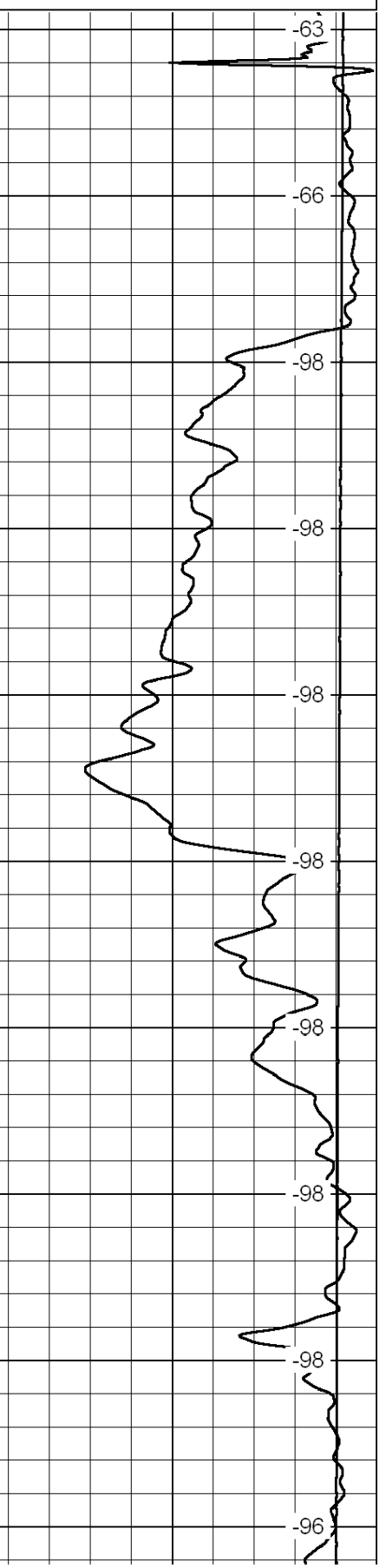
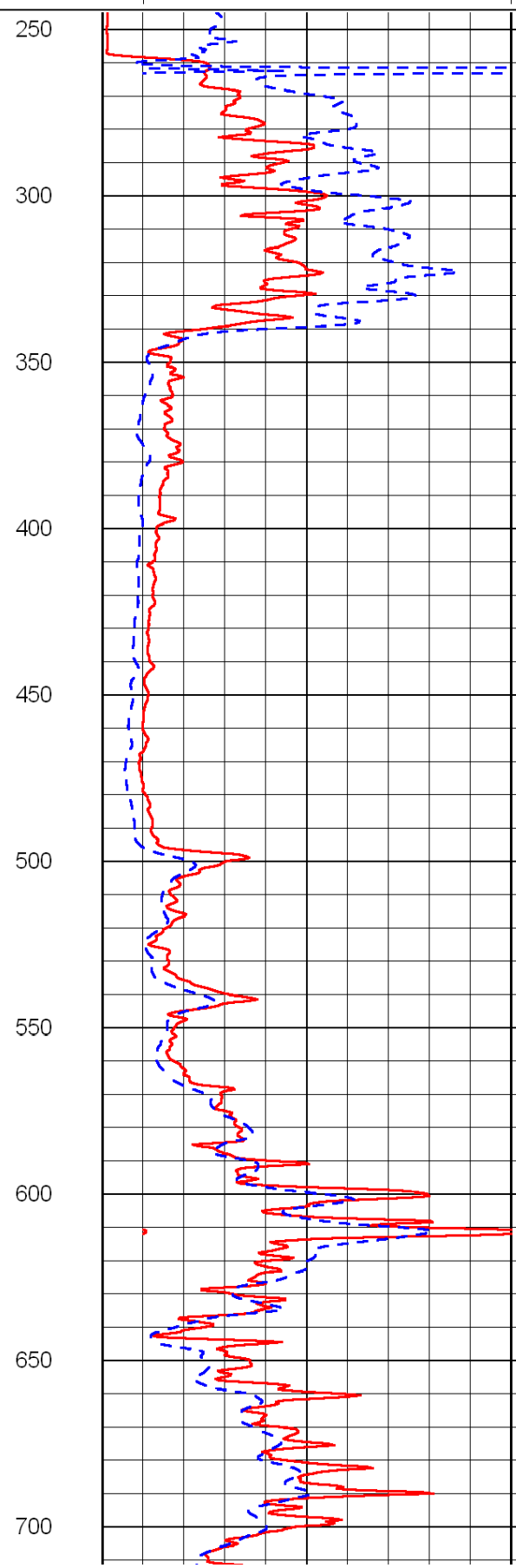
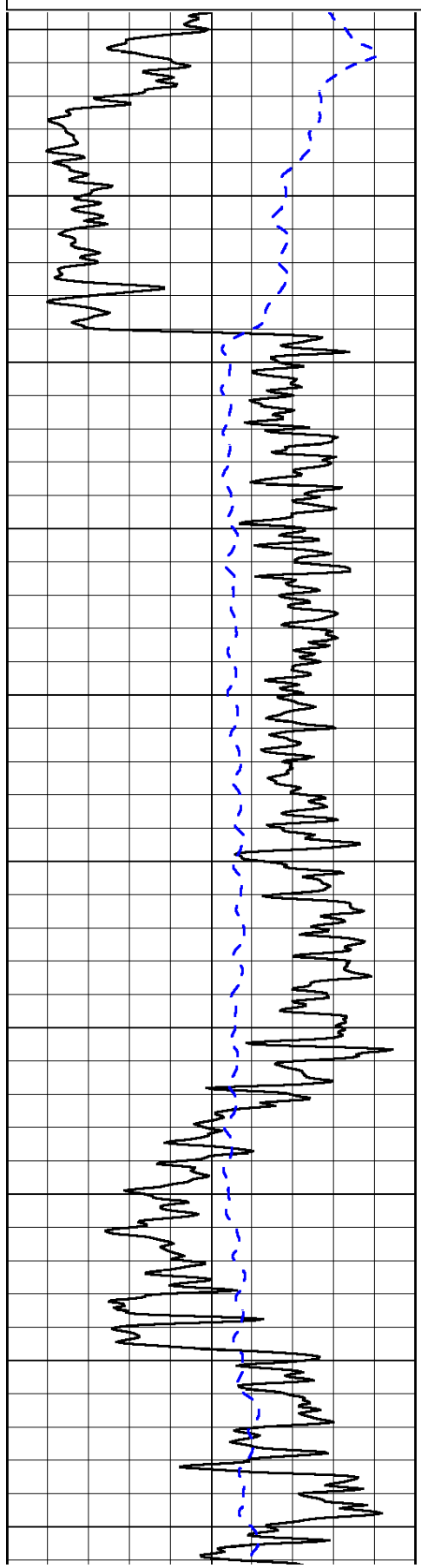
0	Gamma Ray	150
-200	SP (mV)	0

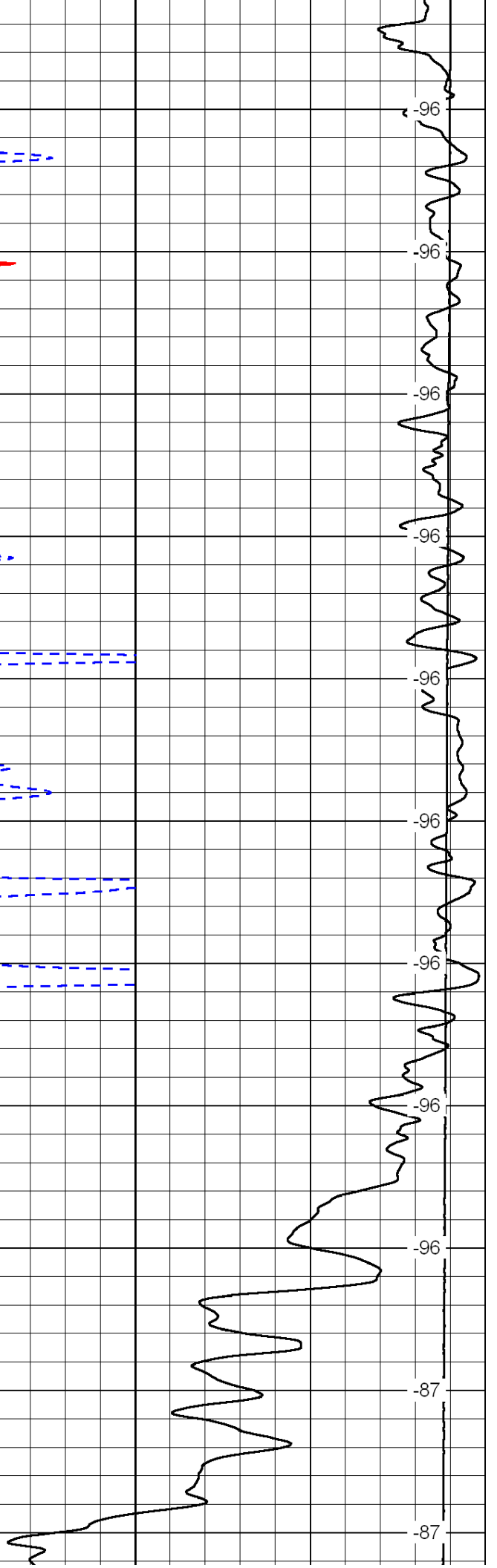
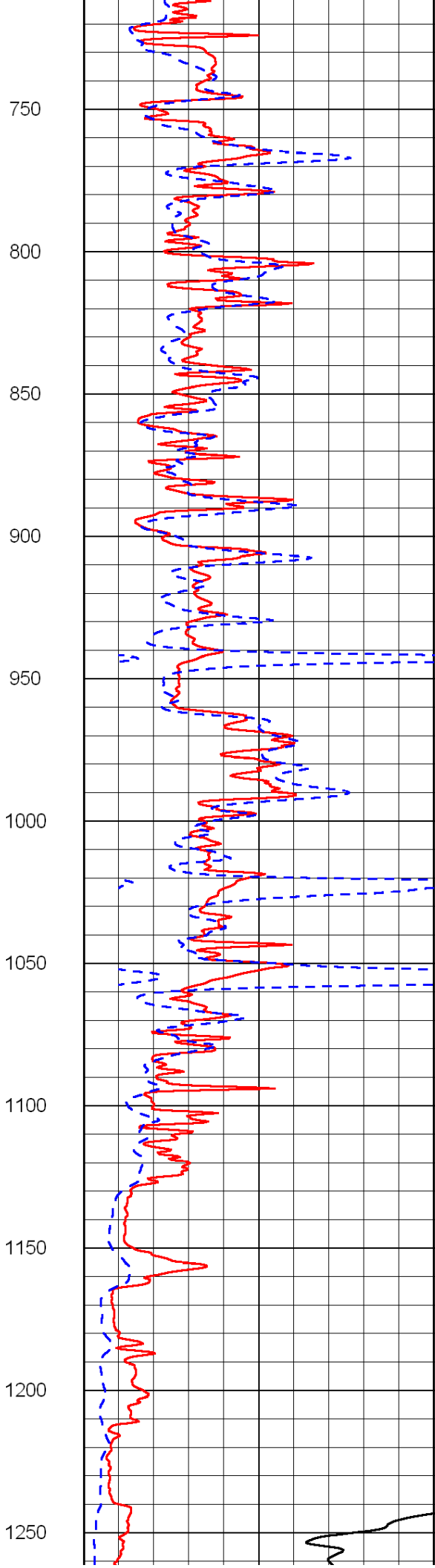
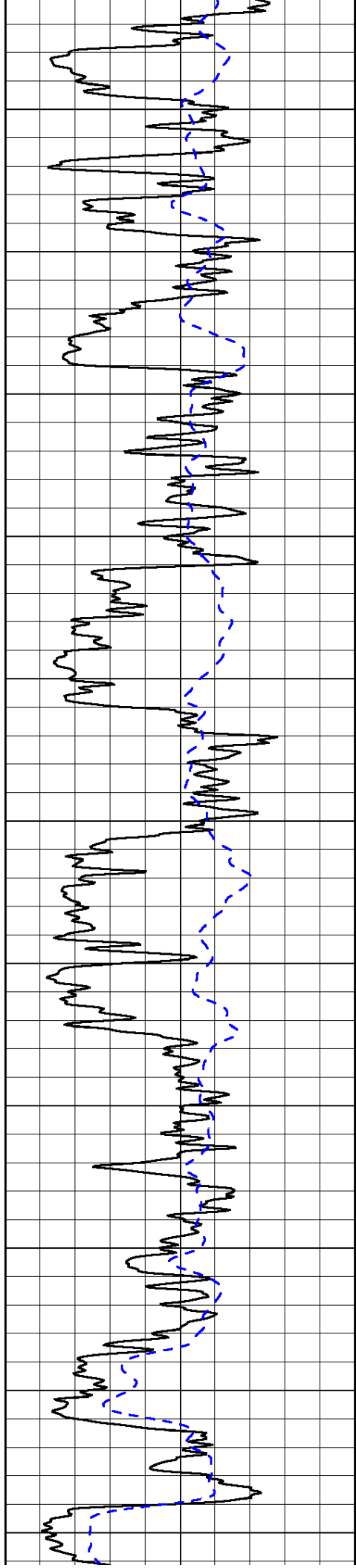
0	Shallow Resistivity	50
0	Deep Resistivity	50

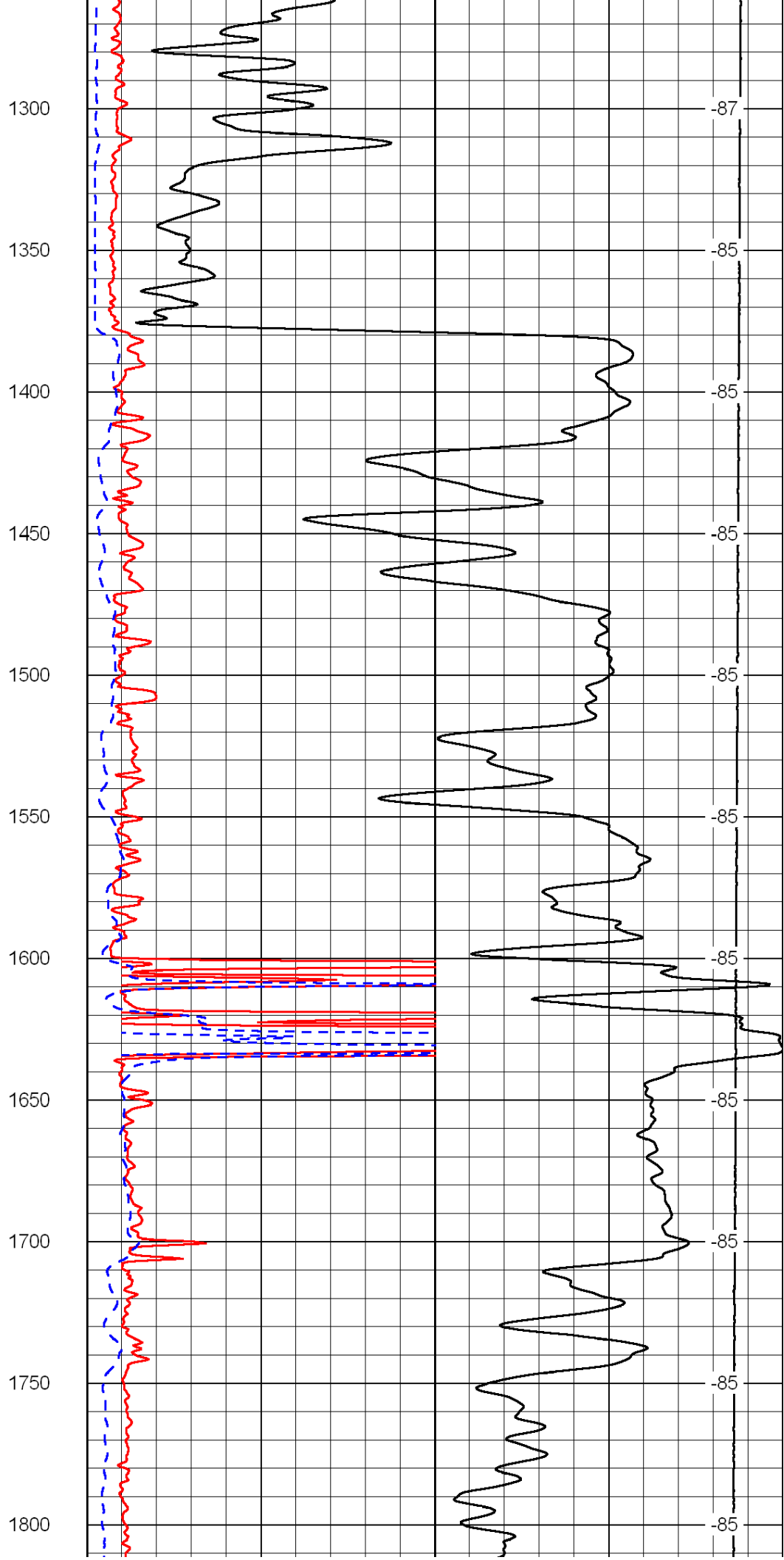
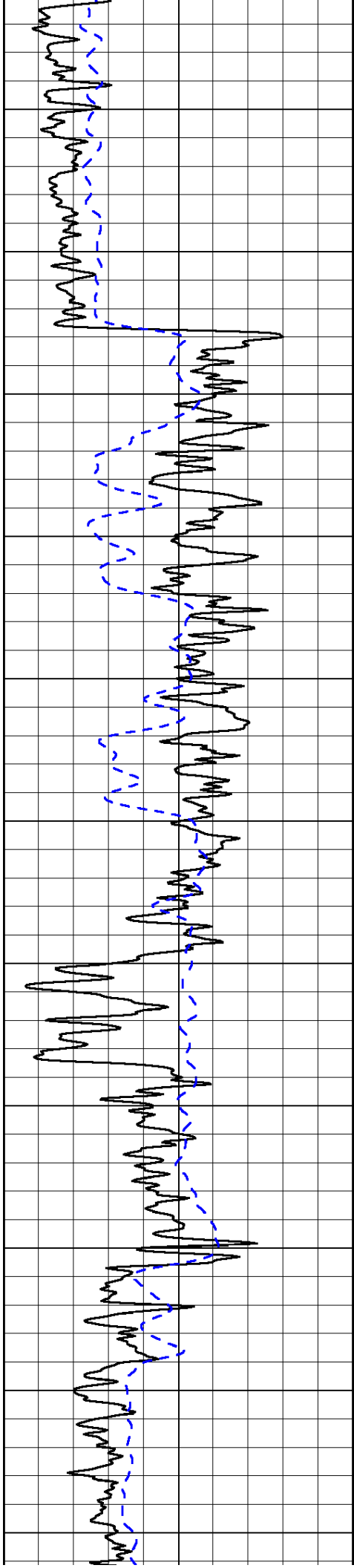
LSPD

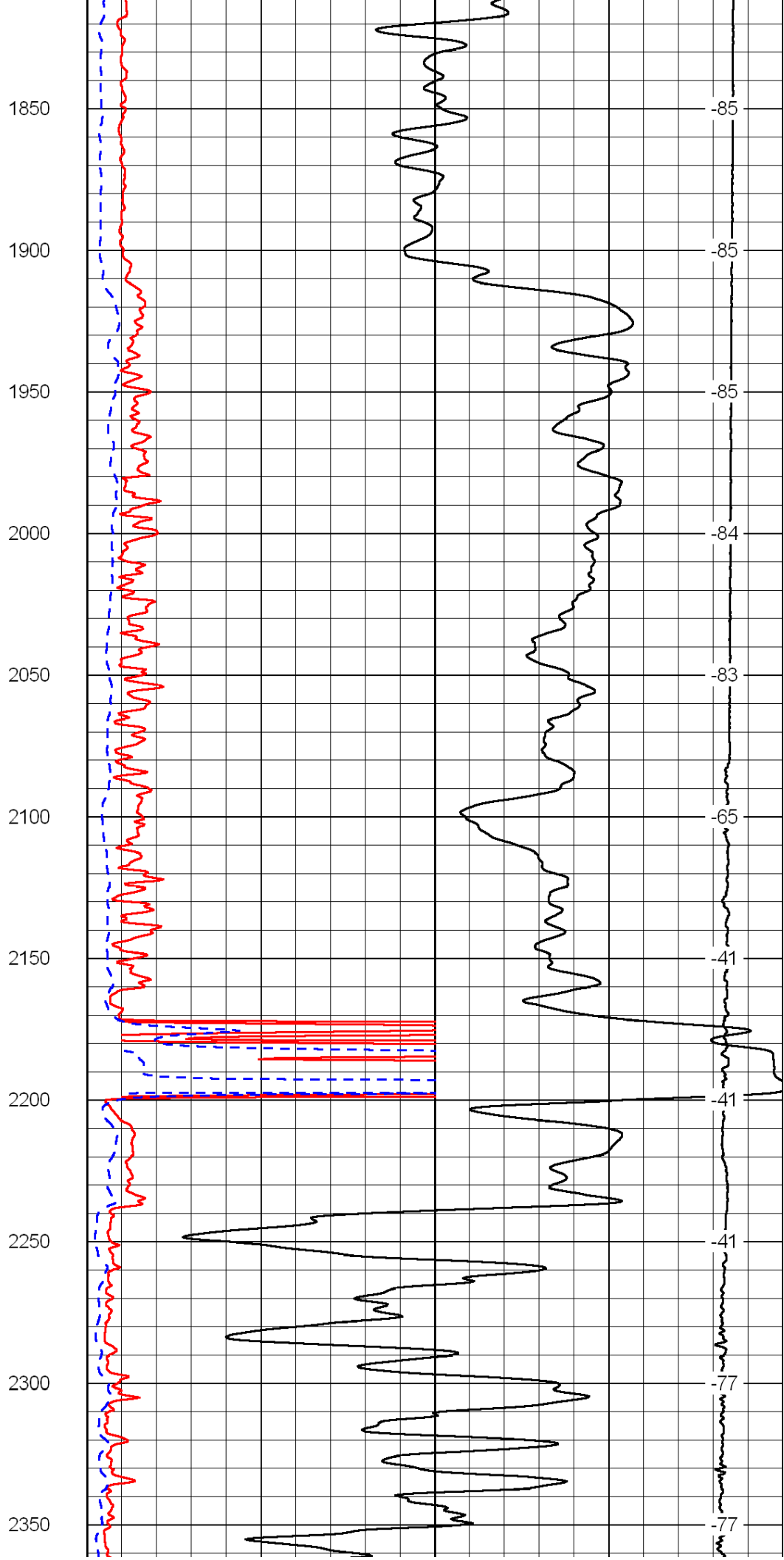
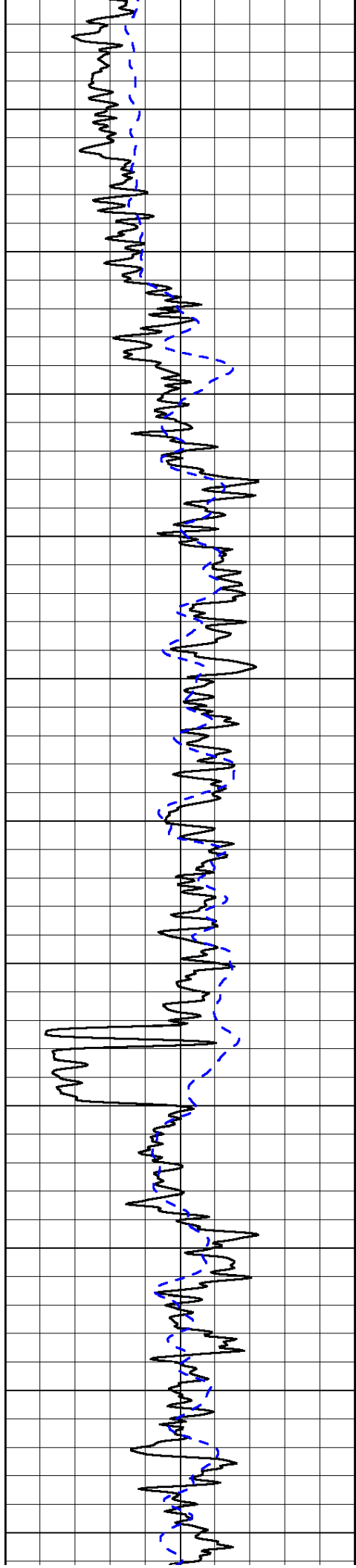
1000	Conductivity	0
15000	Line Tension	0

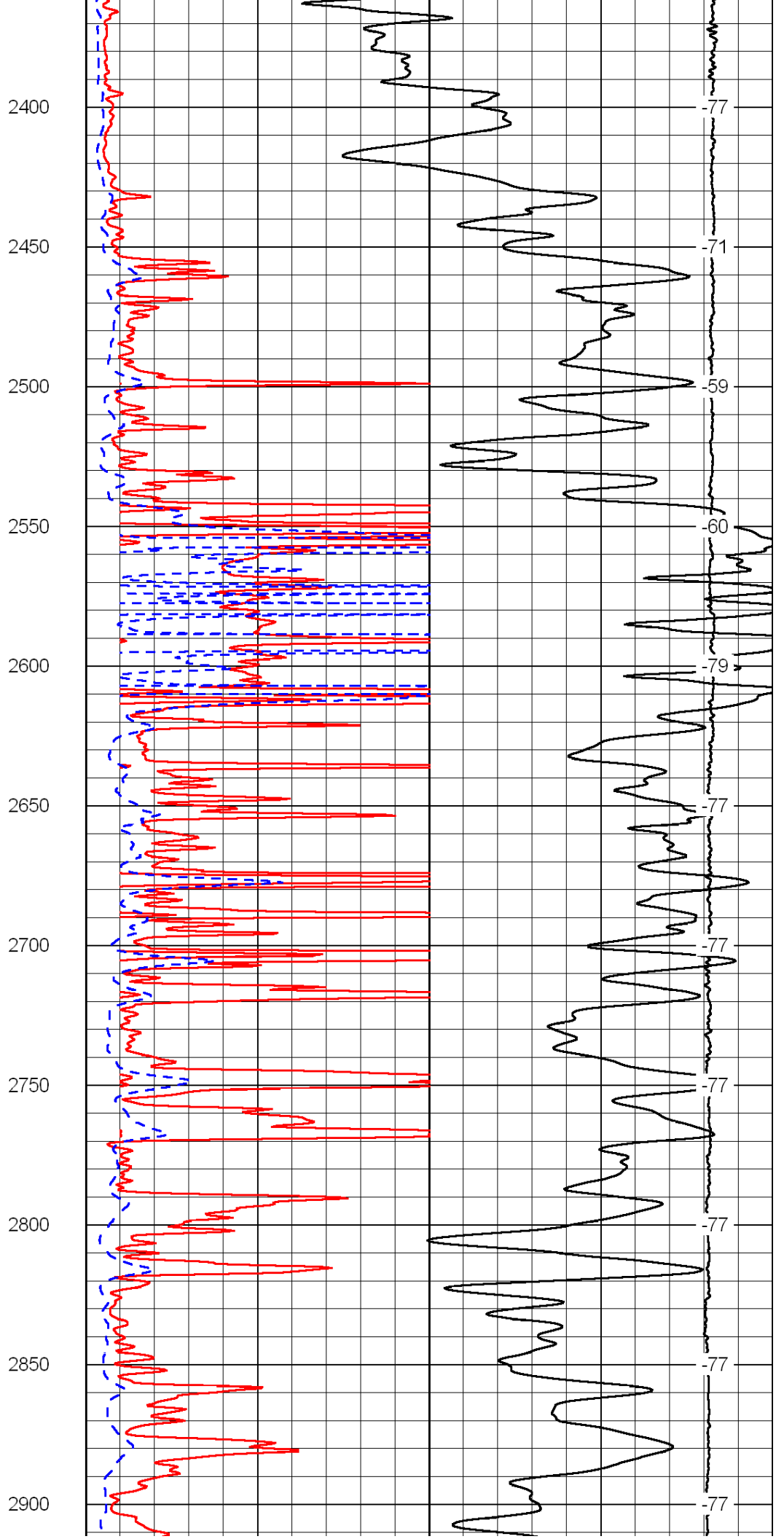
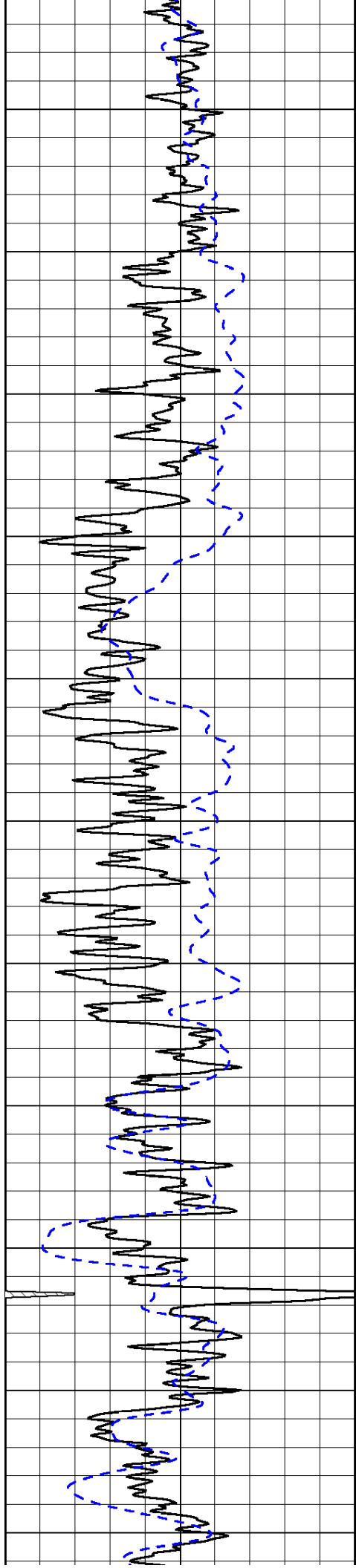
50	Shallow Resistivity	500
50	Deep Resistivity	500

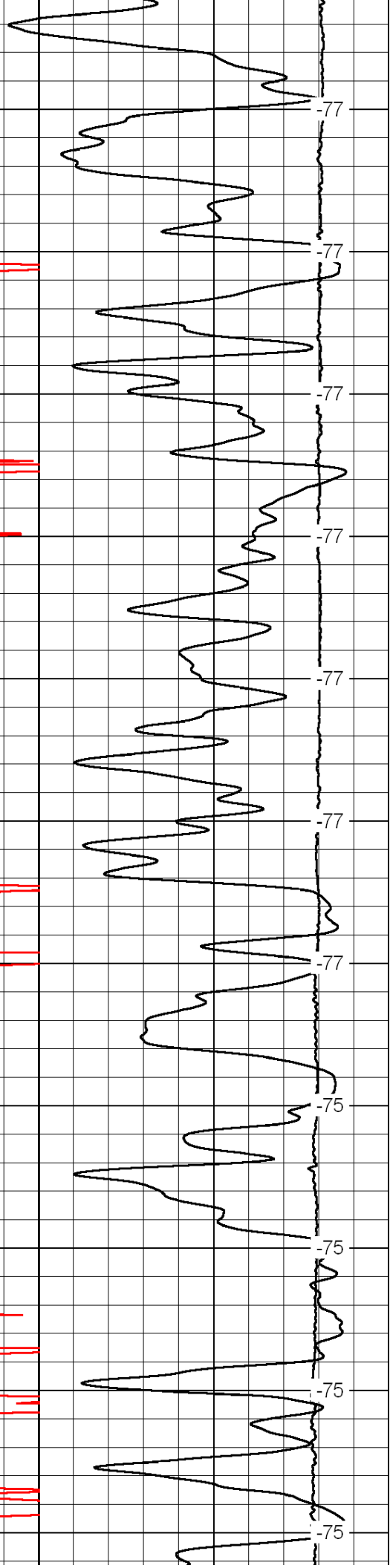
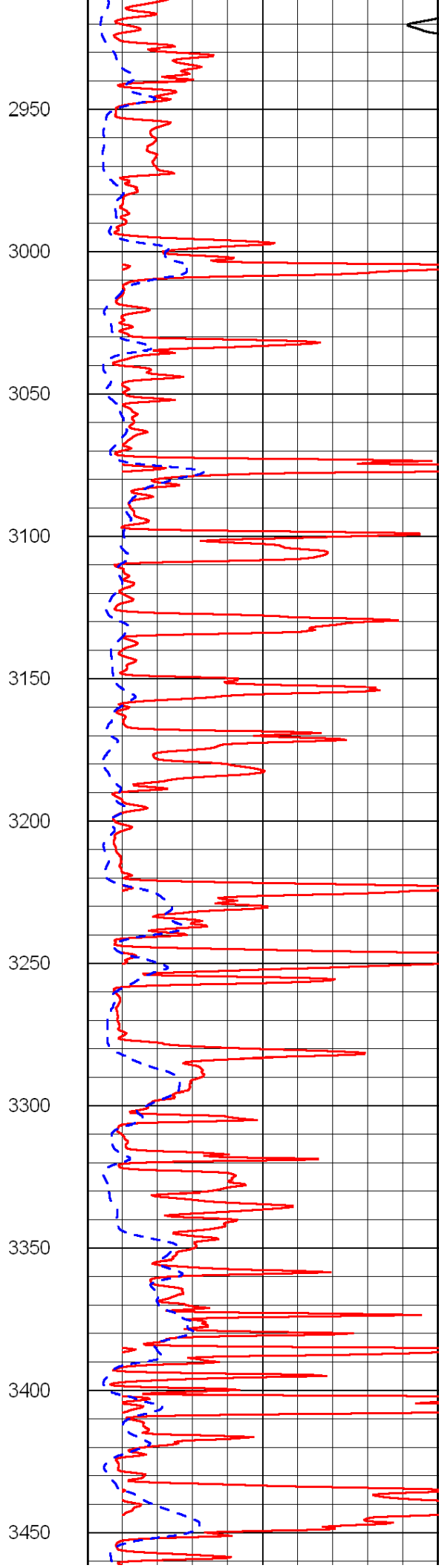
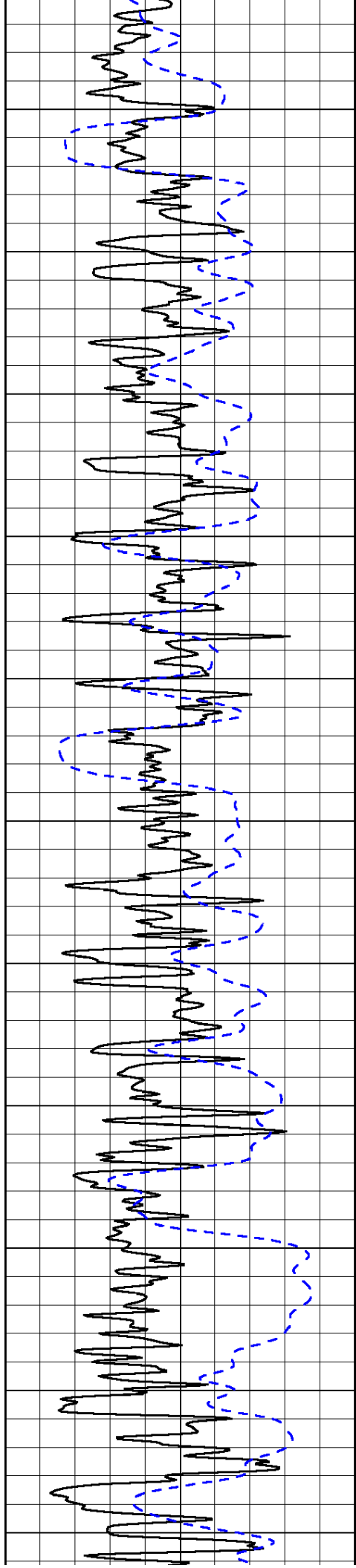


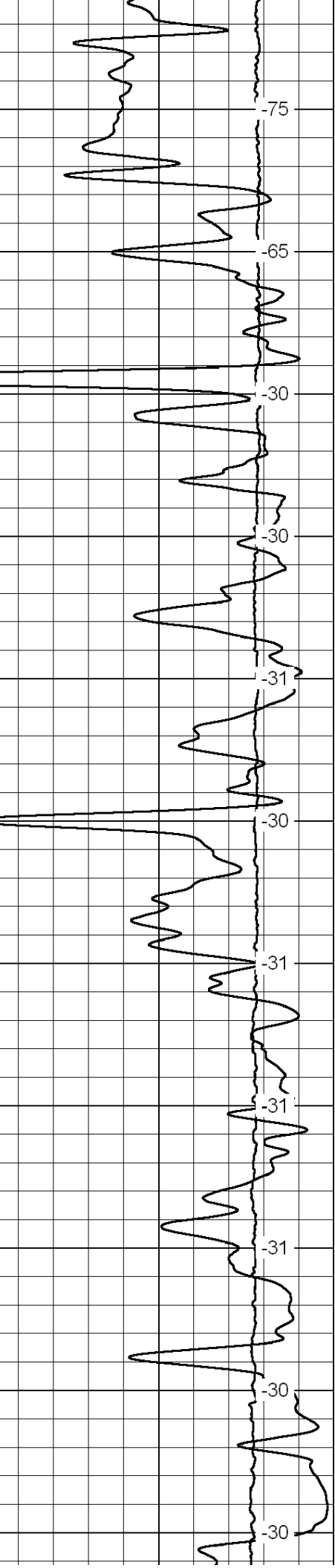
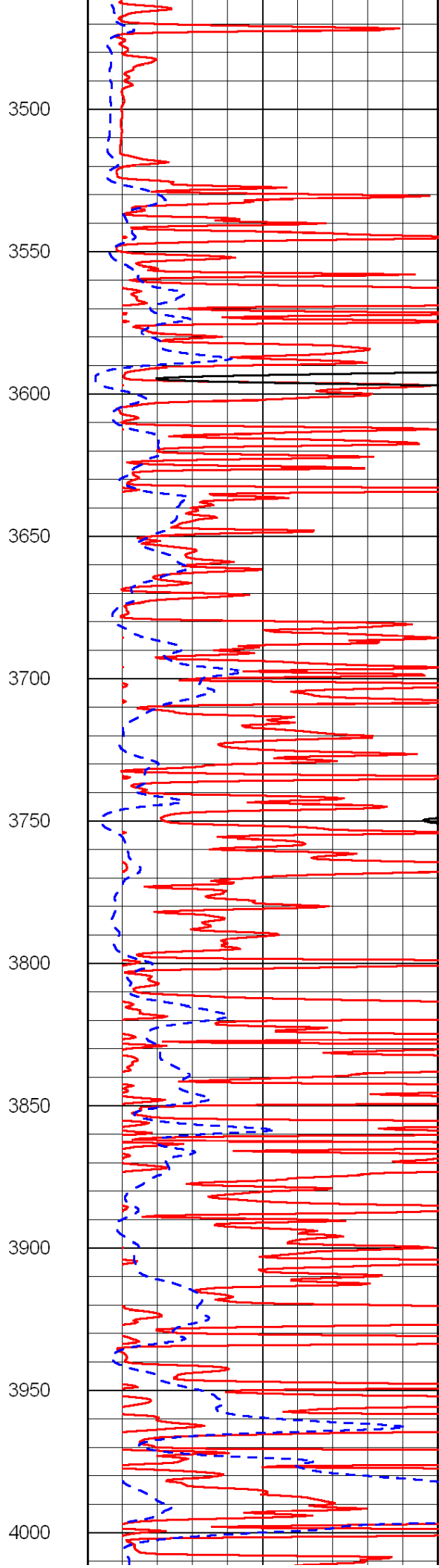
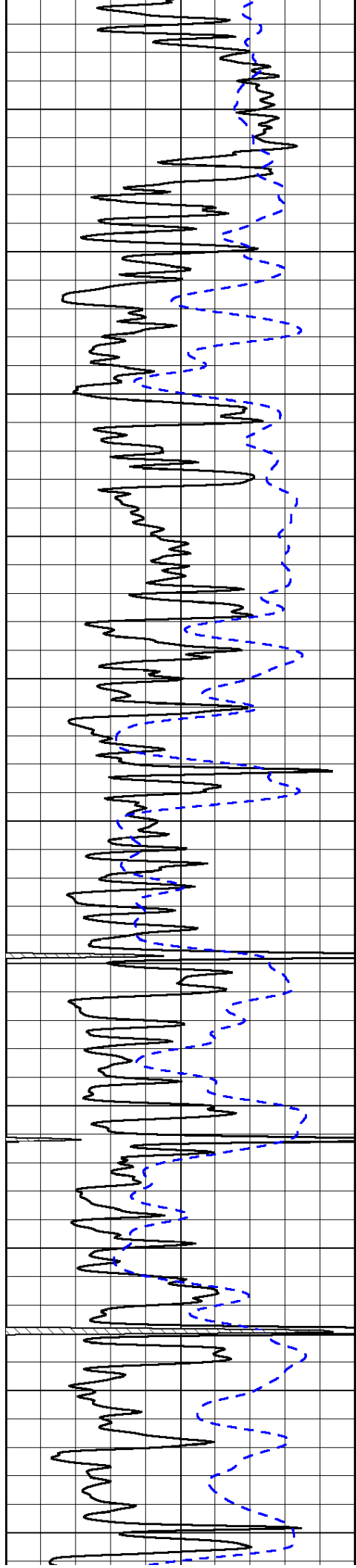


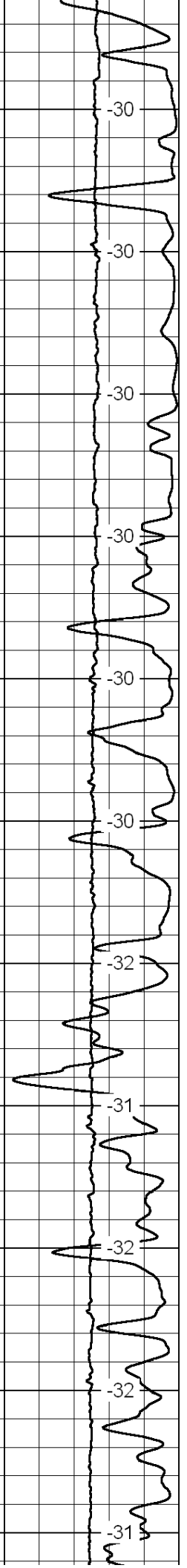
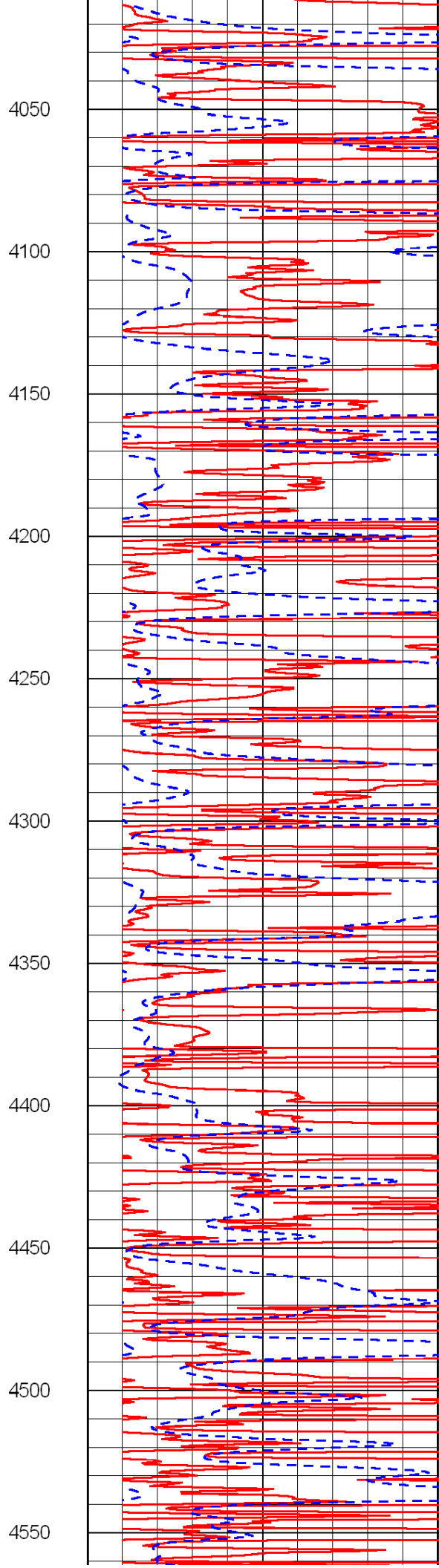
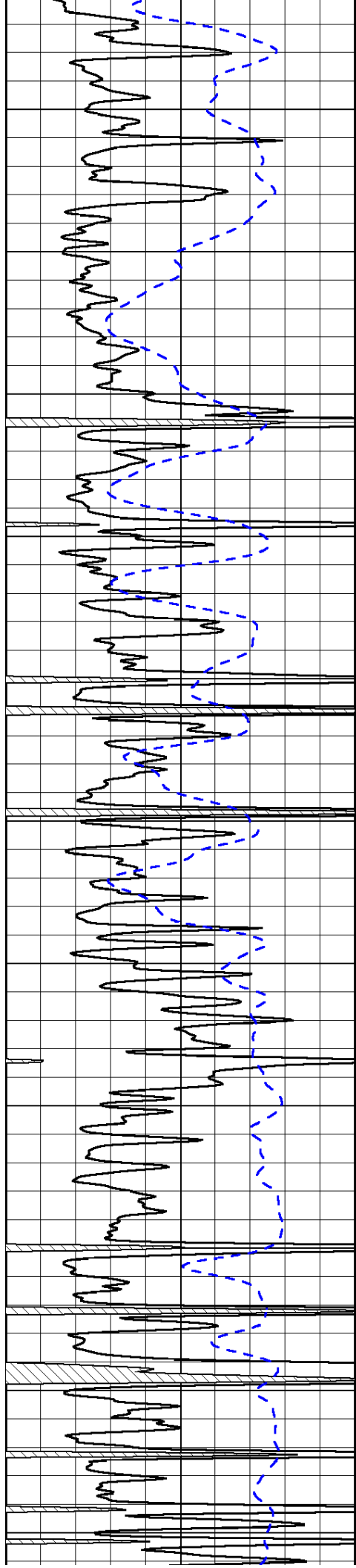


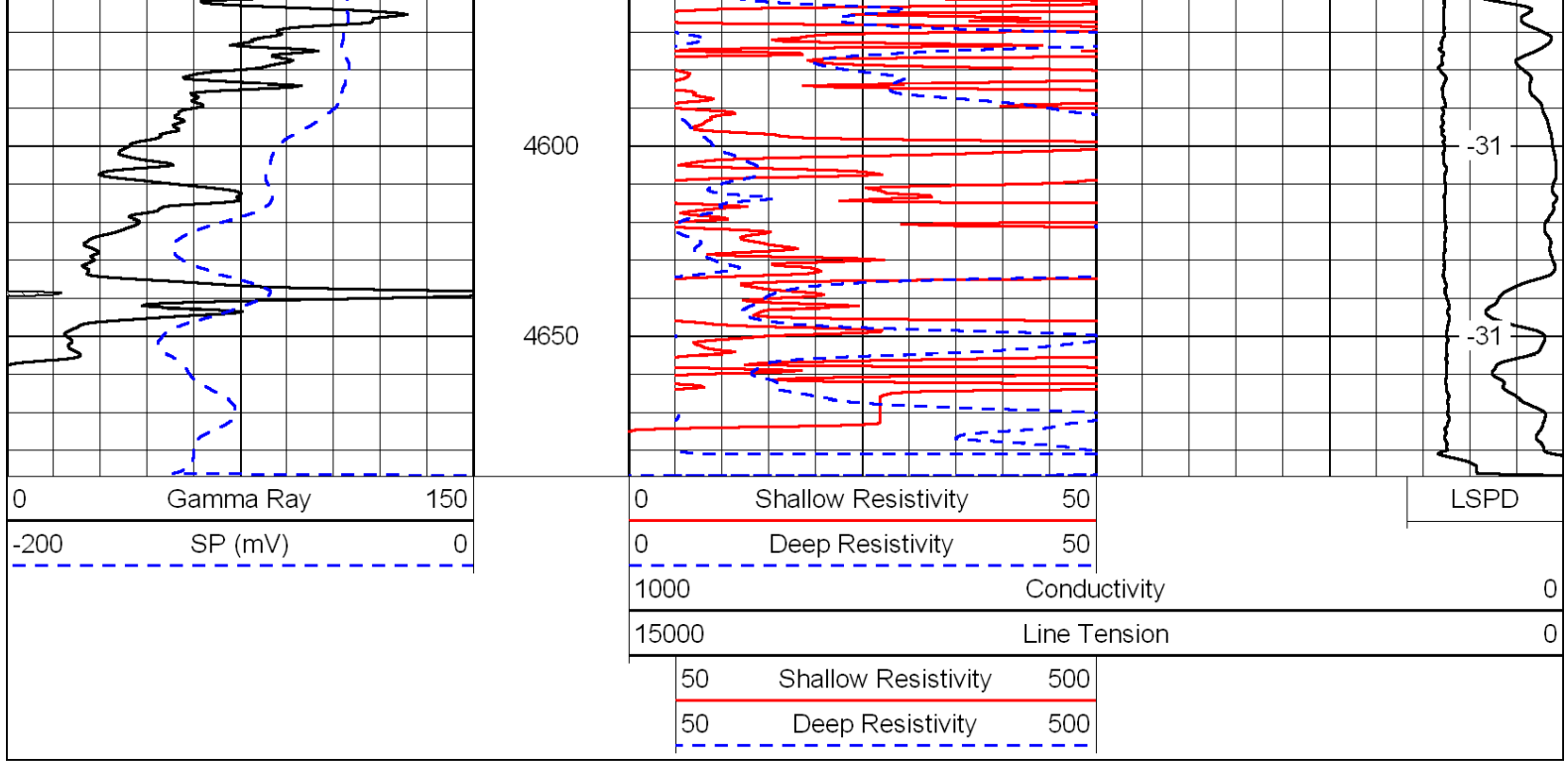




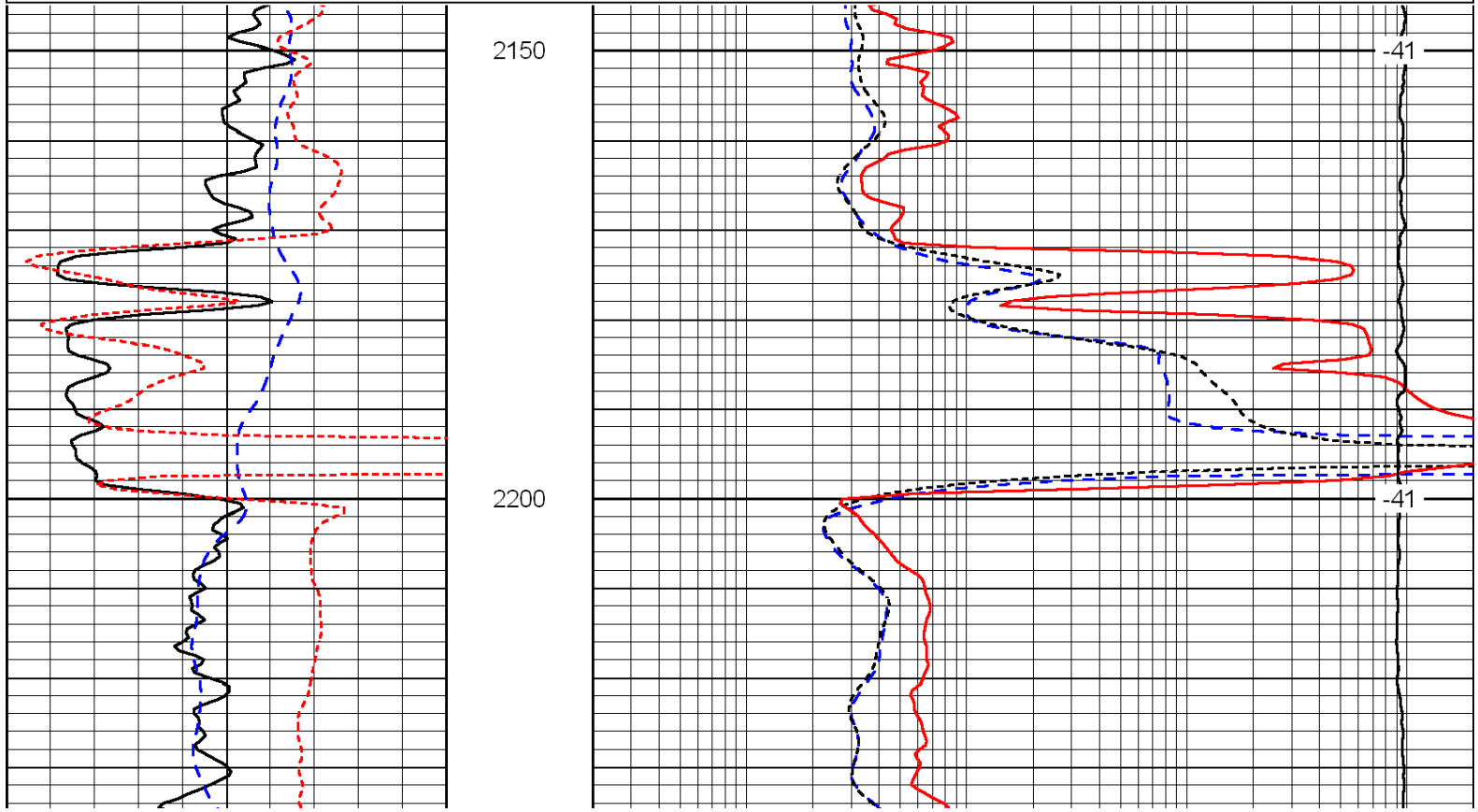
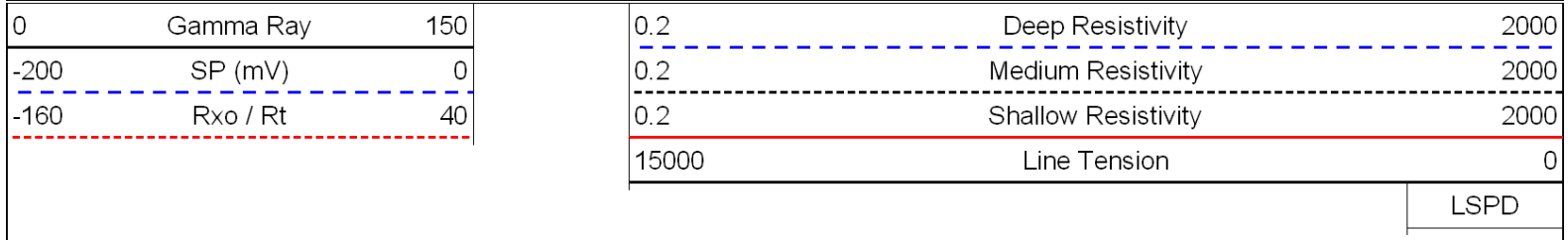


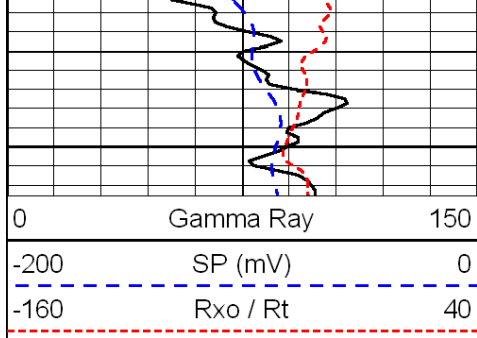




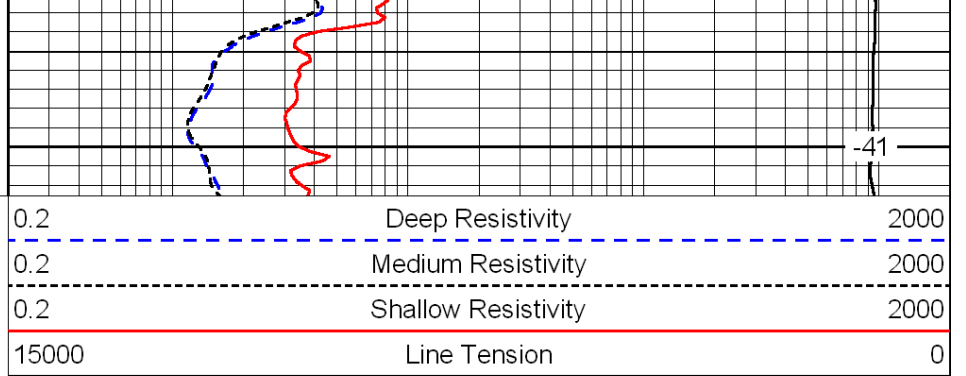


Database File: c:\warrior\data\larson\_kim no. 1-17\larsonhd.db  
 Dataset Pathname: DIL\larstk  
 Presentation Format: dil  
 Dataset Creation: Thu Mar 10 16:24:11 2011  
 Charted by: Depth in Feet scaled 1:240





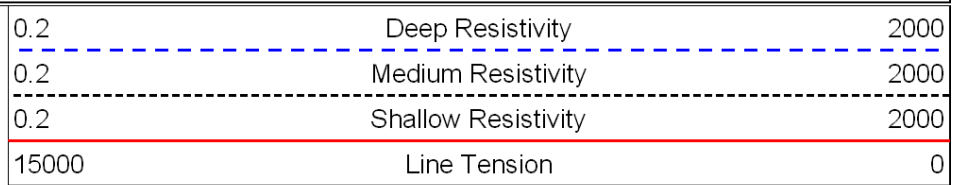
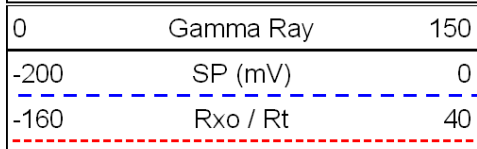
2250



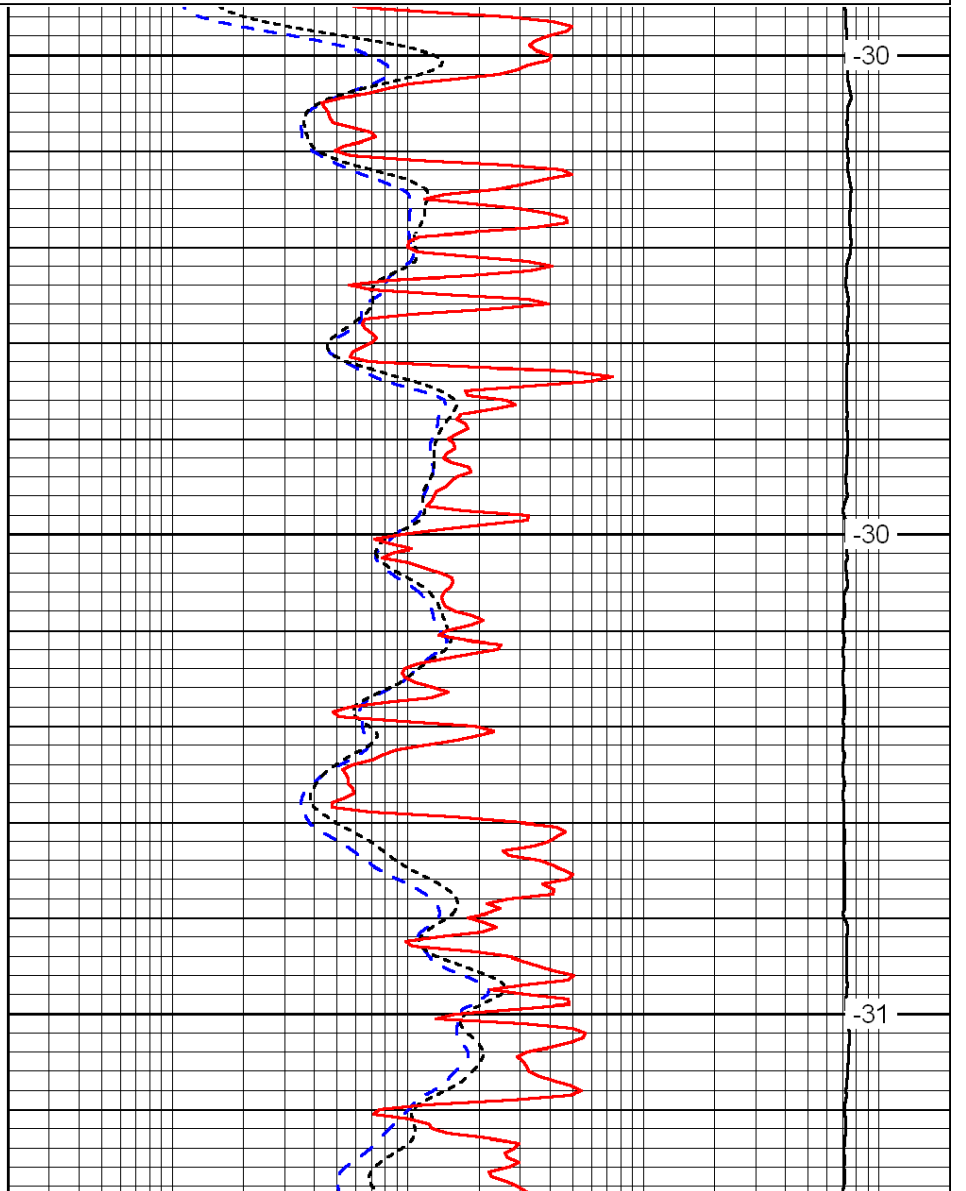
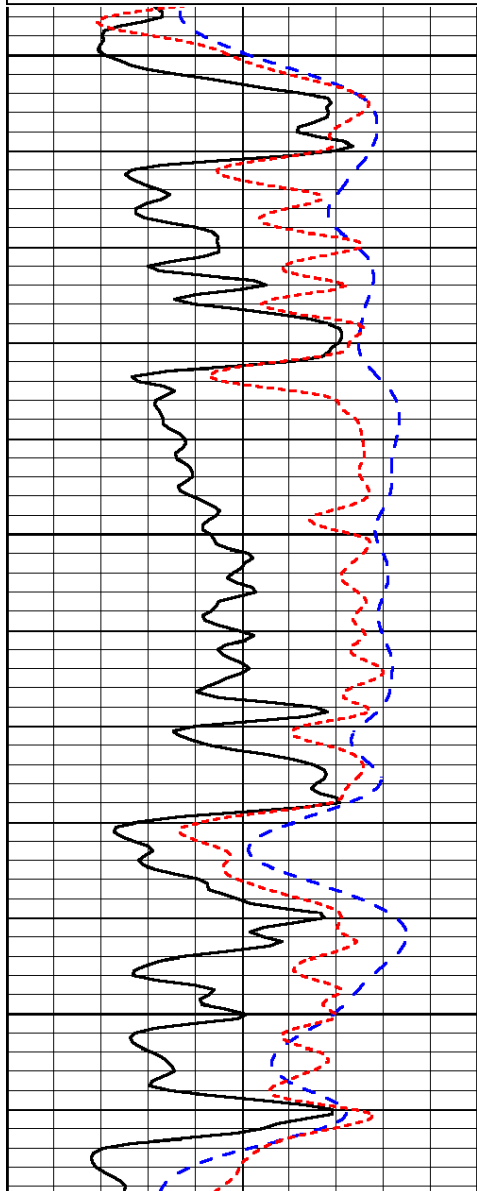
-41

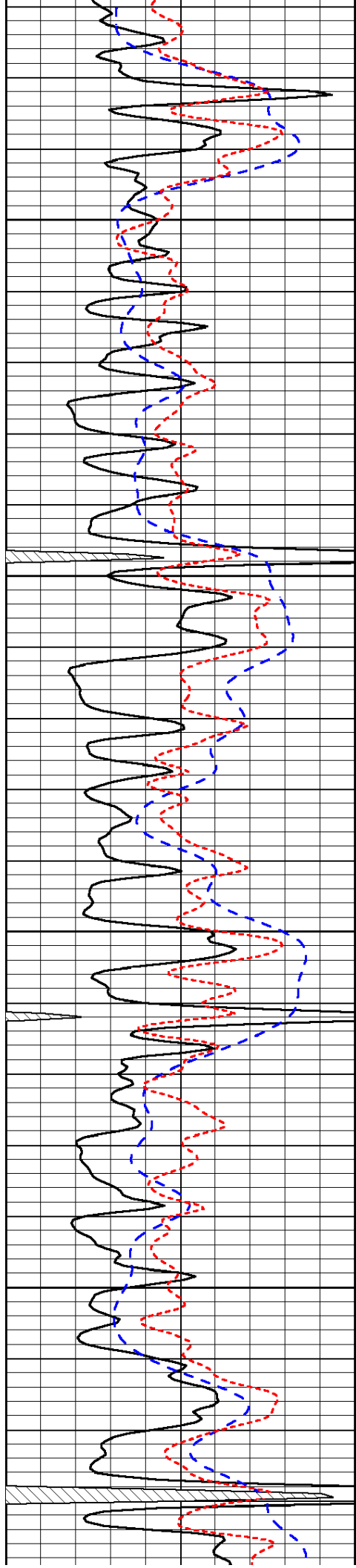
LSPD

Database File: c:\warrior\data\larson\_kim no. 1-17\larsonhd.db  
 Dataset Pathname: DIL/larstk  
 Presentation Format: dil  
 Dataset Creation: Thu Mar 10 16:24:11 2011  
 Charted by: Depth in Feet scaled 1:240



LSPD



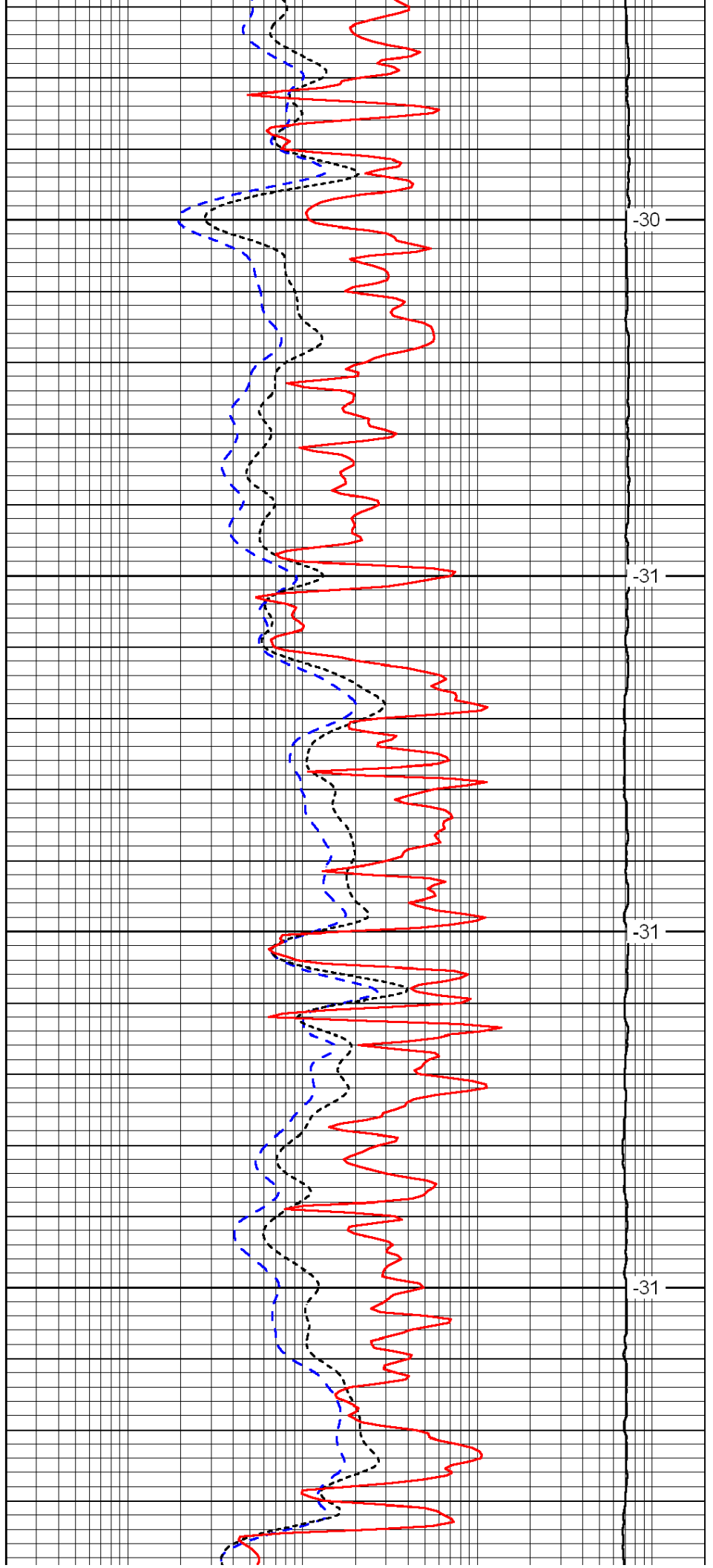


3750

3800

3850

3900

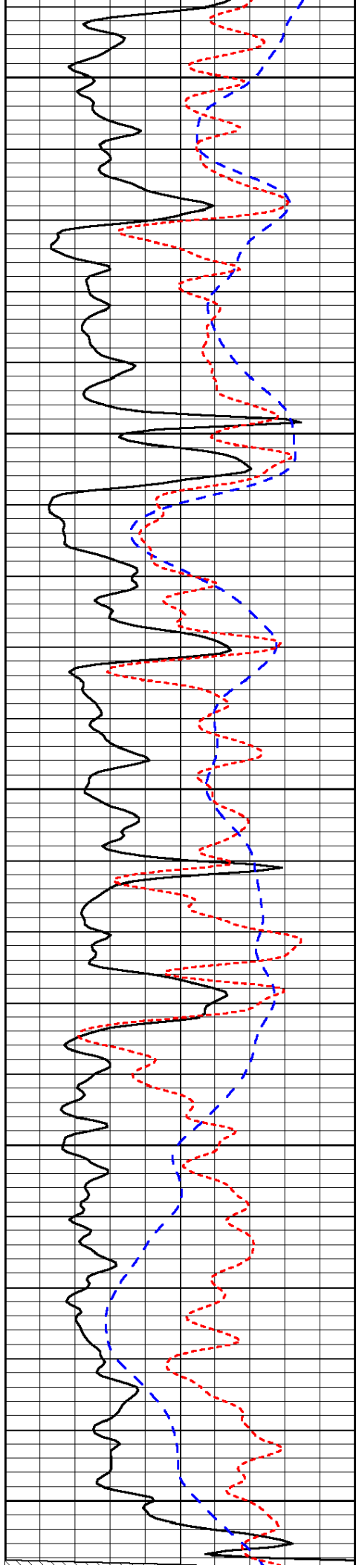


-30

-31

-31

-31



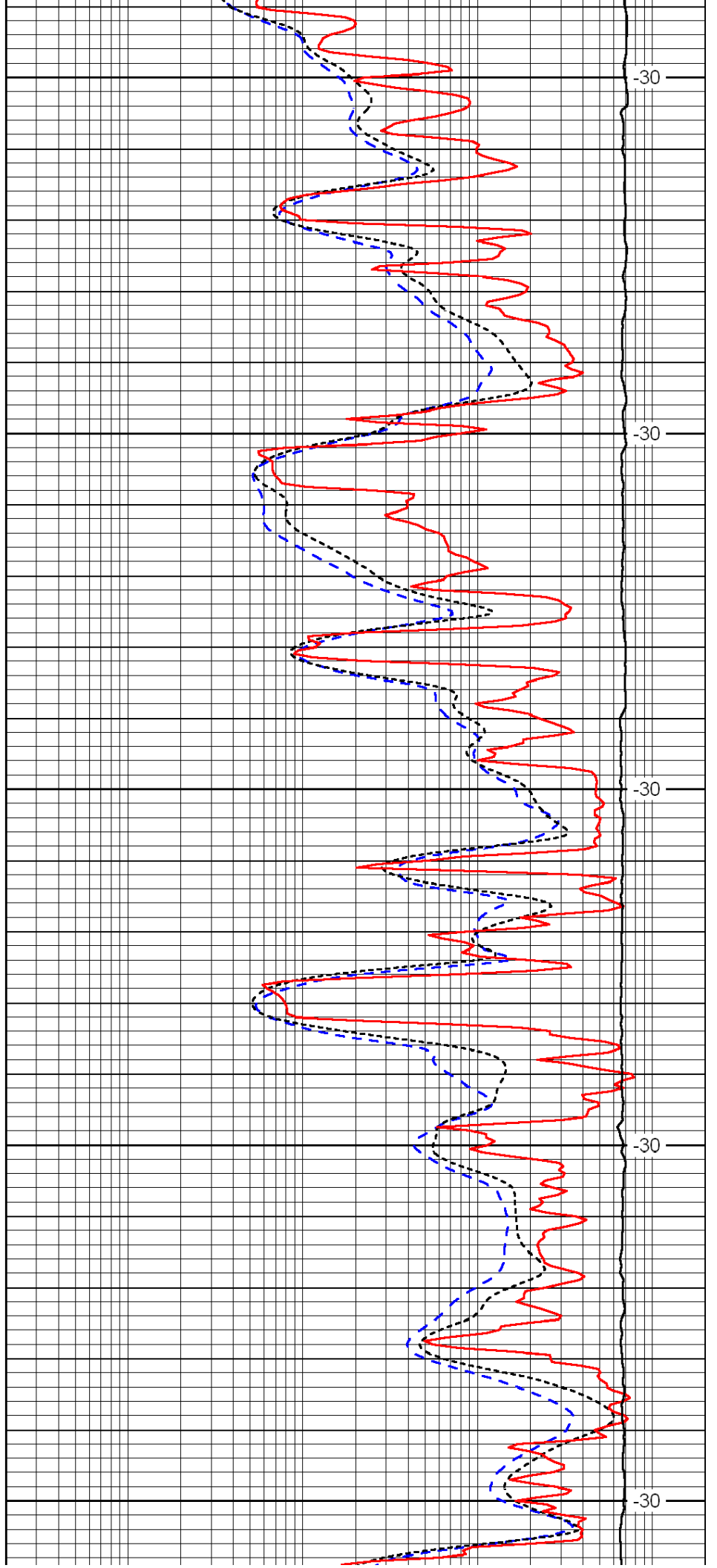
3950

4000

4050

4100

4150



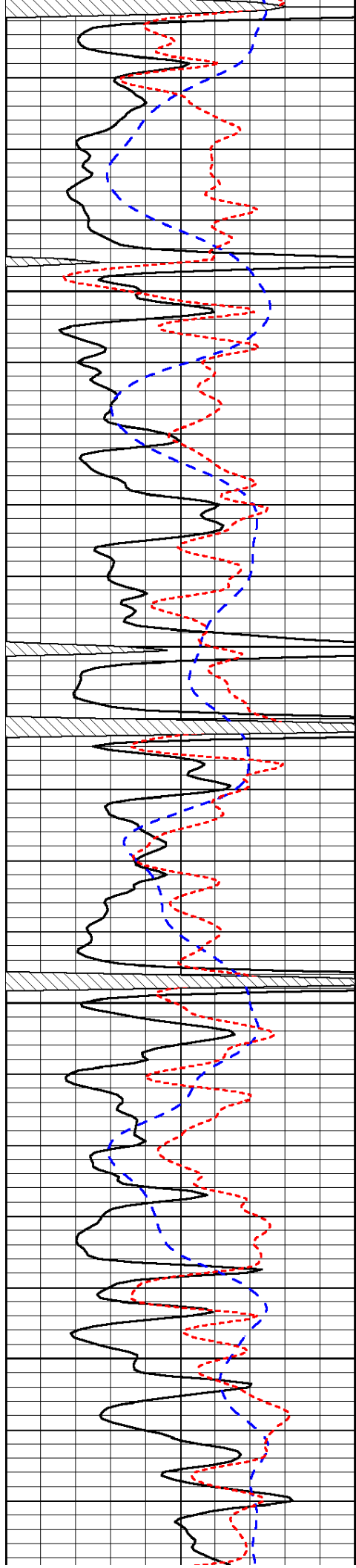
-30

-30

-30

-30

-30

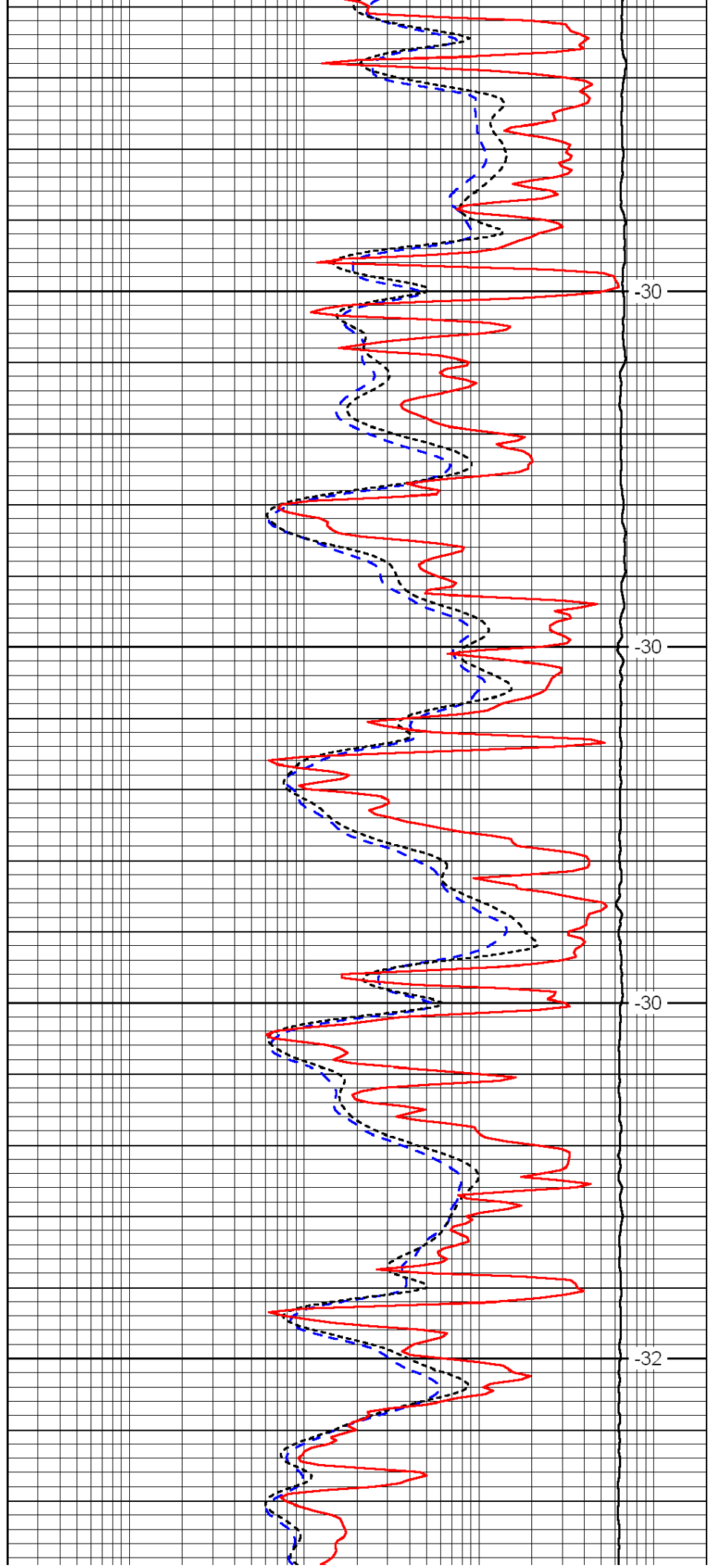


4200

4250

4300

4350

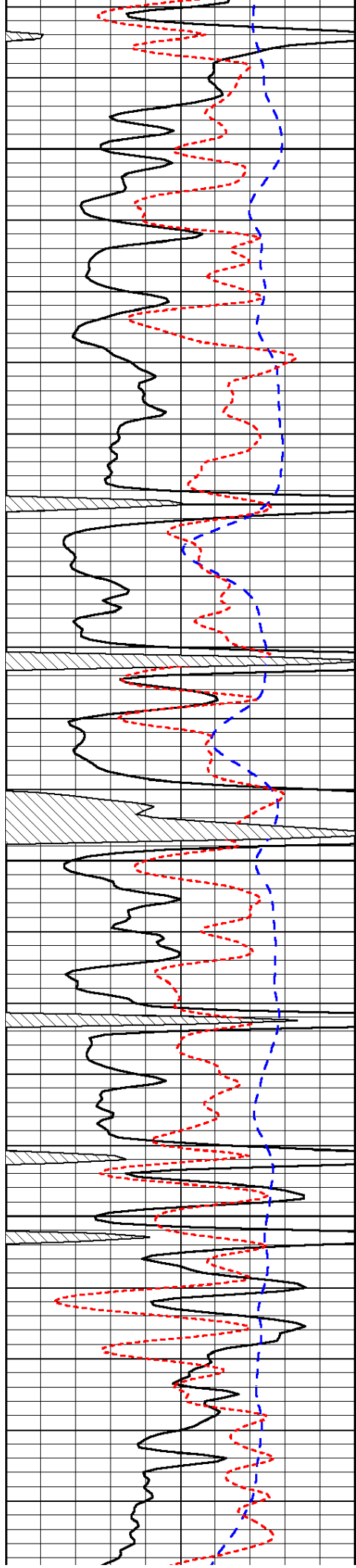


-30

-30

-30

-32

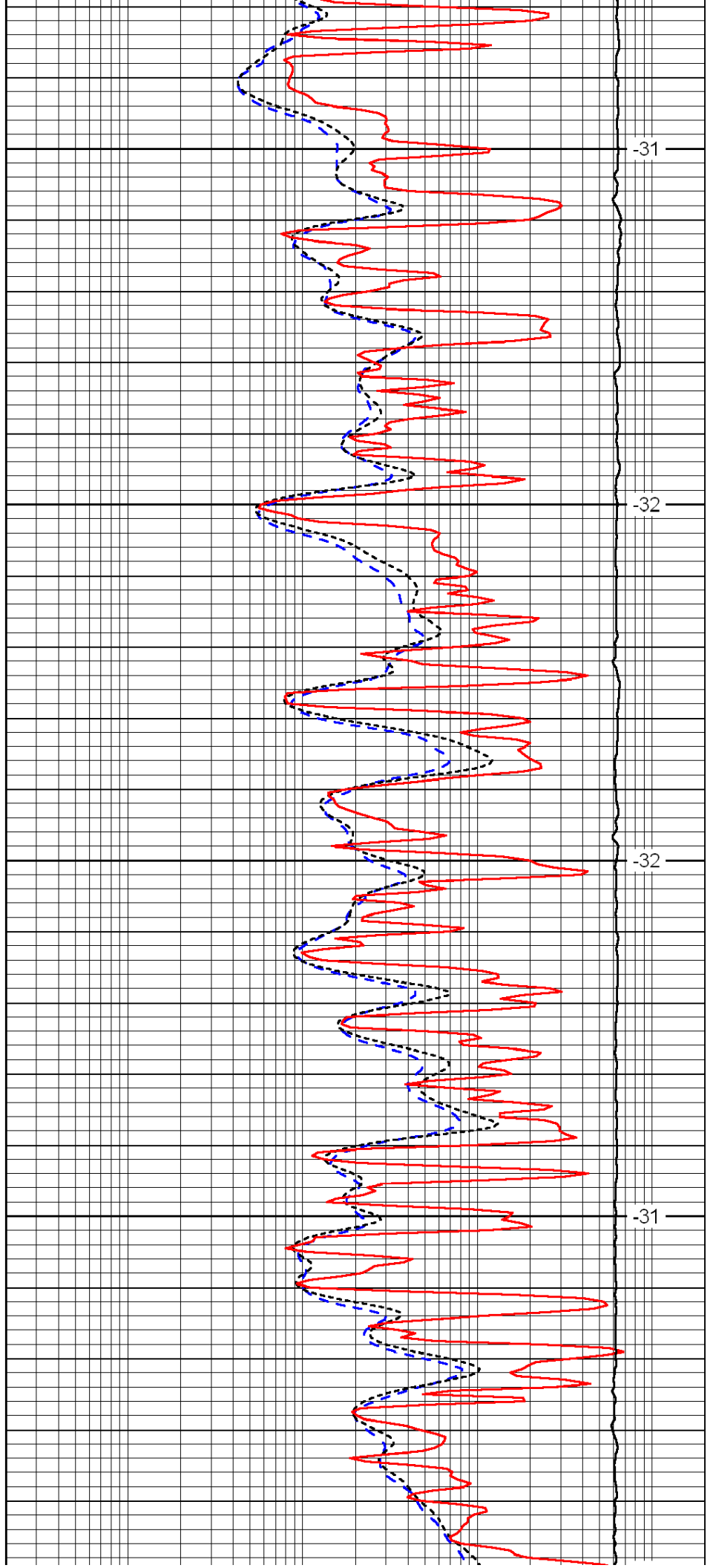


4400

4450

4500

4550

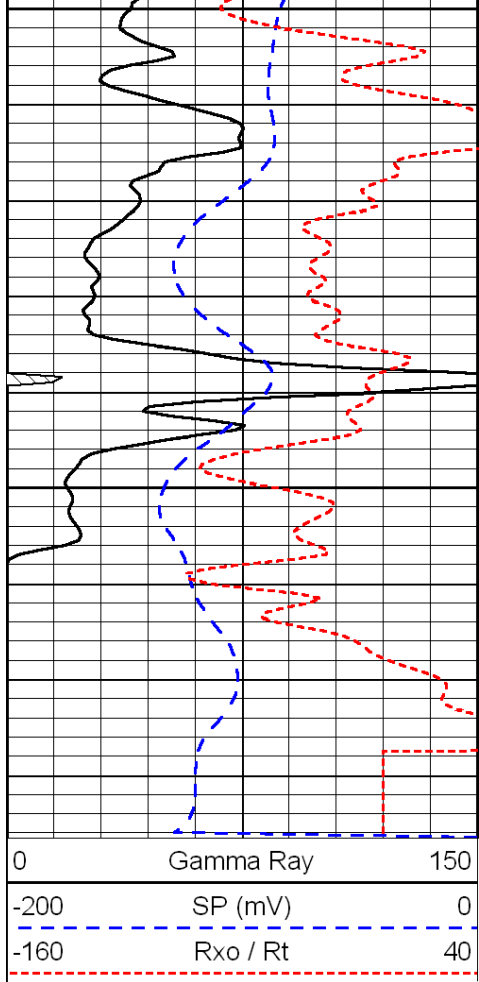


-31

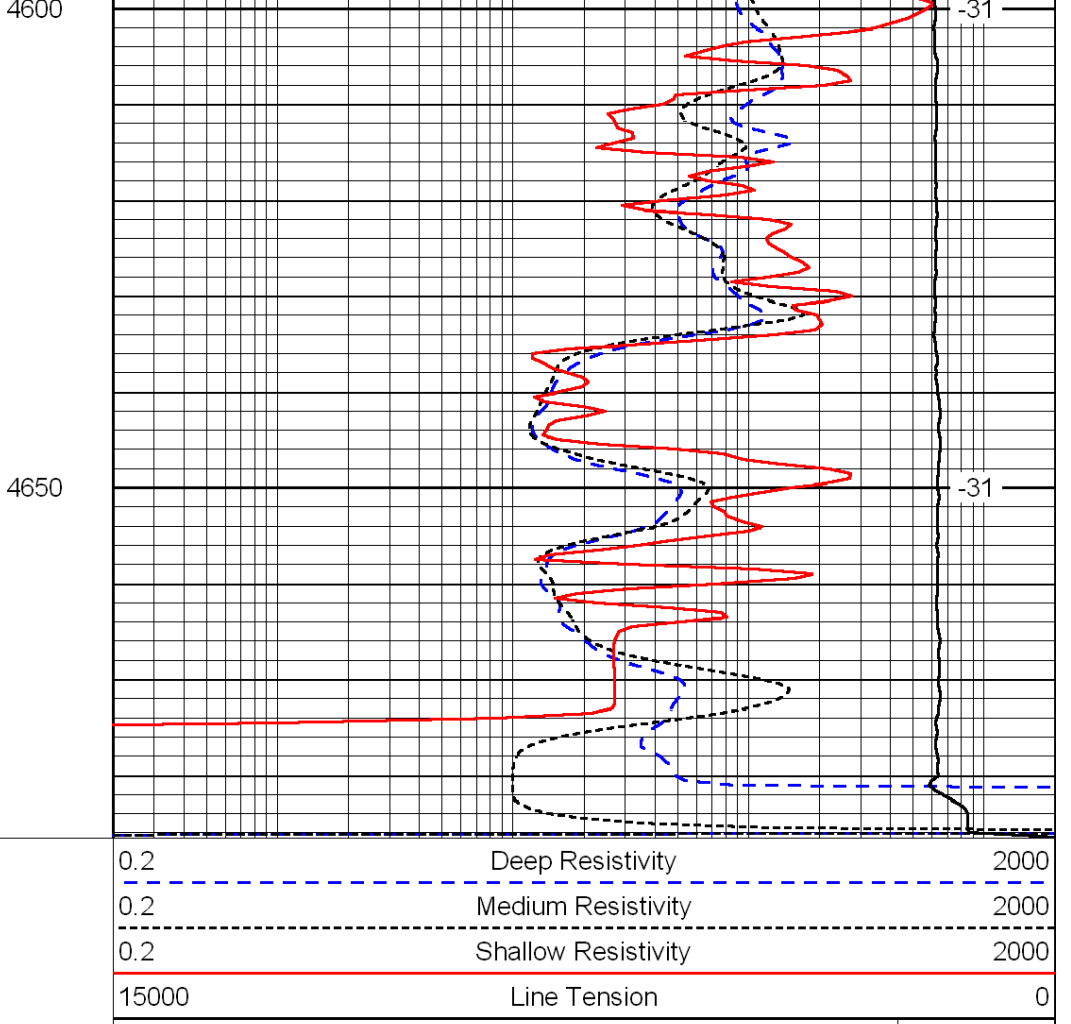
-32

-32

-31



0	Gamma Ray	150
-200	SP (mV)	0
-160	Rxo / Rt	40



0.2	Deep Resistivity	2000
0.2	Medium Resistivity	2000
0.2	Shallow Resistivity	2000
15000	Line Tension	0

LSPD