



Microresistivity Log

DIGITAL LOG (785) 625-3858

API No. 15-101-22279-00-00	Company Larson Engineering, Inc.	Well Kim No. 1-17	Location NE - NW - SW - NW 1617' FNL & 586' FWL
	Field Wildcat	County Lane	State Kansas
	Sec: 17	Twp: 19 S	Rge: 29 W
Permanent Datum Log Measured From Drilling Measured From	Ground Level Kelly Bushing Kelly Bushing	Elevation 2849 7 Ft. Above Perm. Datum	Other Services CNL/CDL DIL
Date	3/10/2011	Elevation	K.B. 2856 D.F. 2849 G.L. 2849

Run Number	Two
Depth Driller	4680
Depth Logger	4682
Bottom Logged Interval	4681
Top Log Interval	3600
Casing Driller	8.625 @ 261
Casing Logger	258
Bit Size	7.875
Type Fluid in Hole	Chemical
Salinity, ppm CL	2100
Density / Viscosity	9.3 50
pH / Fluid Loss	10.5 7.2
Source of Sample	Flowline
Rm @ Meas. Temp	1.50 @ 60
Rmf @ Meas. Temp	1.13 @ 60
Rmc @ Meas. Temp	2.03 @ 60
Source of Rmf / Rmc	Charts
Rm @ BHT	0.73 @ 123
Operating Rig Time	4 Hours
Max Rec. Temp. F	123
Equipment Number	15
Location	Hays
Recorded By	B. Becker
Witnessed By	Steve Davis

<<< Fold Here >>>

All interpretations are opinions based on inferences from electrical or other measurements and we cannot and do not guarantee the accuracy or correctness of any interpretation, and we shall not, except in the case of gross or willful negligence on our part, be liable or responsible for any loss, costs, damages, or expenses incurred or sustained by anyone resulting from any interpretation made by any of our officers, agents or employees. These interpretations are also subject to our general terms and conditions set out in our current Price Schedule.

Comments

Thank you for using Log-Tech, Inc.
(785) 625-3858

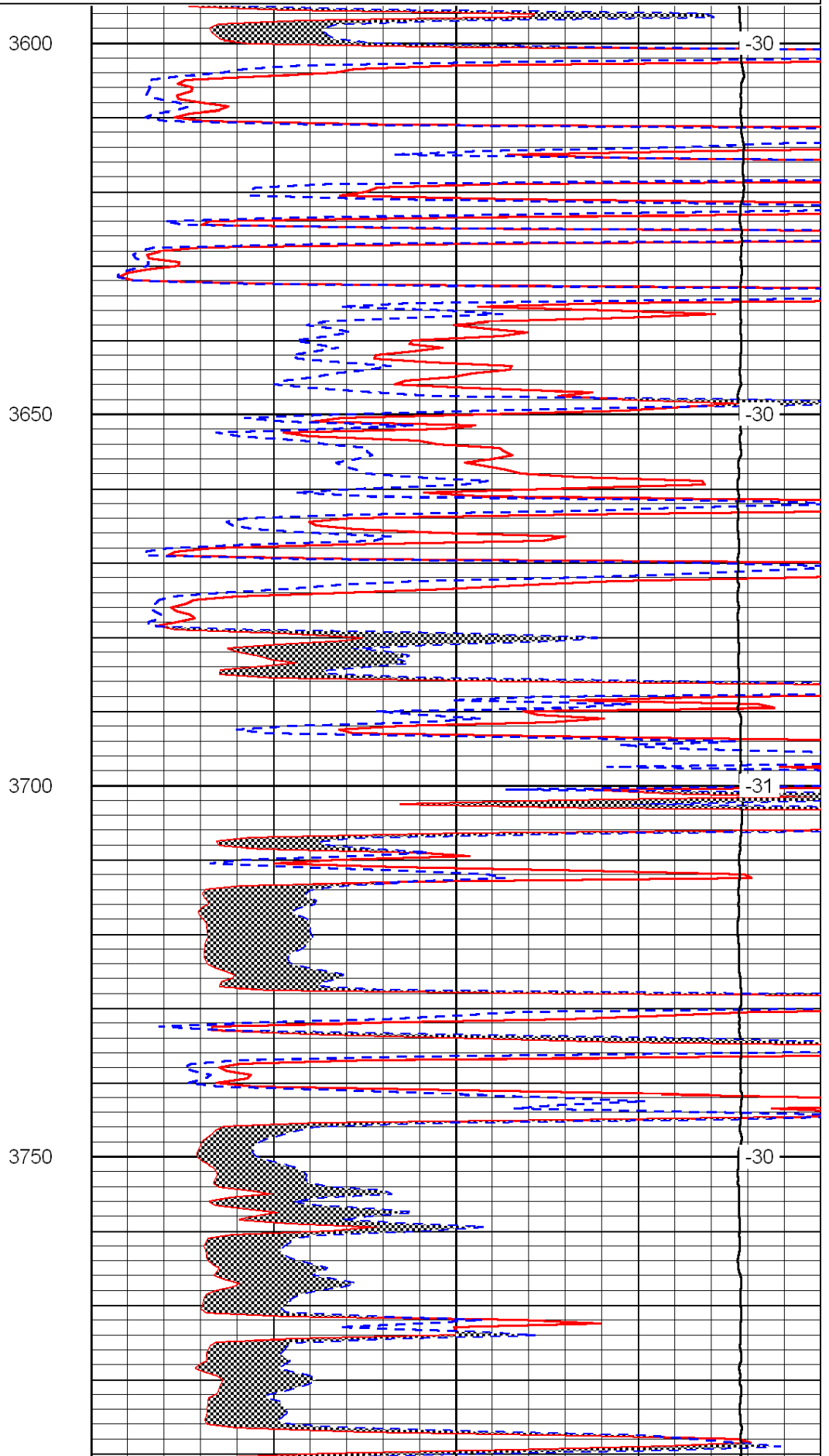
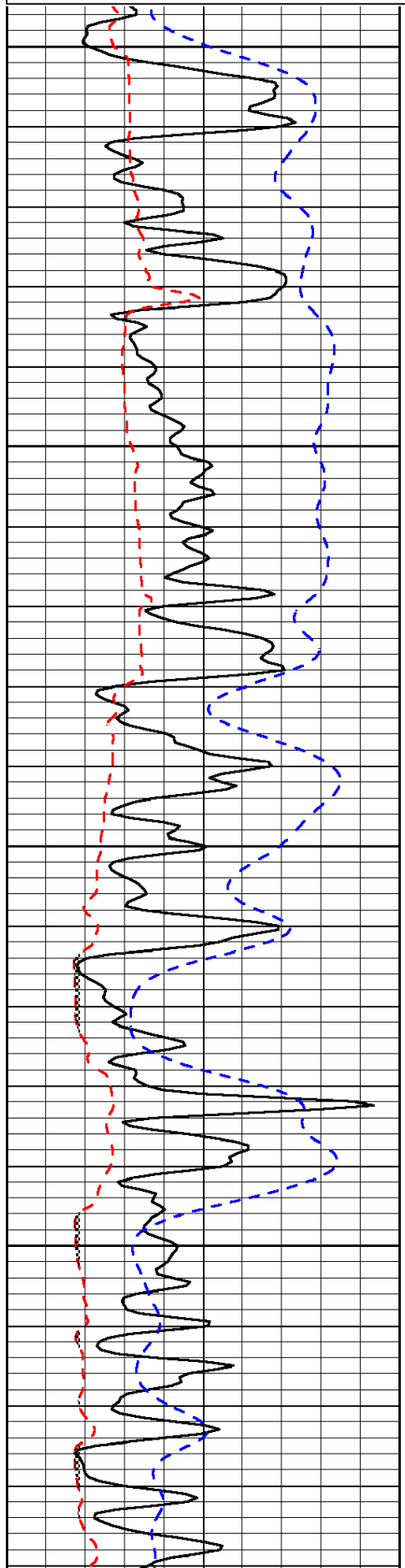
Dighton, Ks;
5 West to Gage Rd;
5 South; East Into

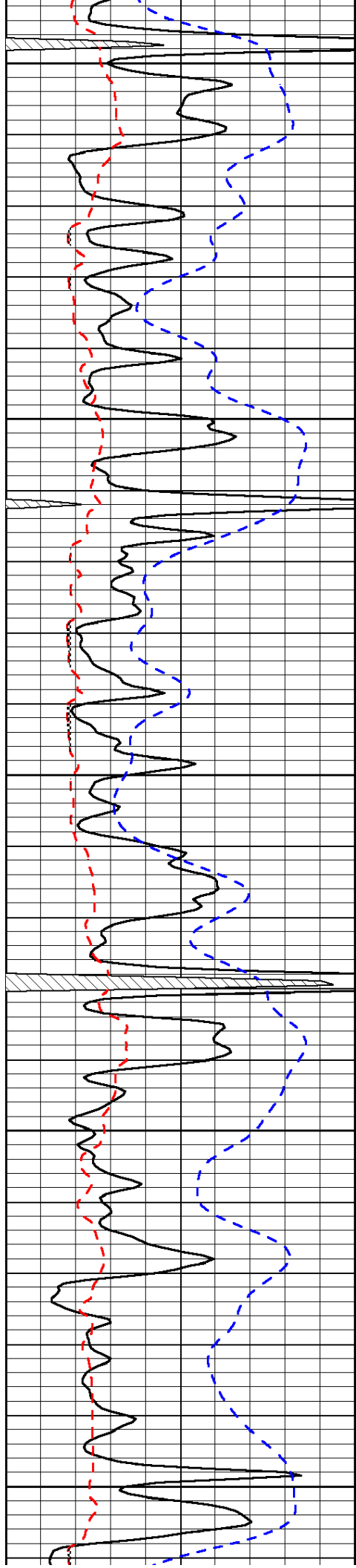
Database File: c:\warrior\data\larson_kim no. 1-17\larsonhd.db
 Dataset Pathname: DIL\larstk
 Presentation Format: micro
 Dataset Creation: Thu Mar 10 16:24:11 2011
 Charted by: Depth in Feet scaled 1:240

0	Gamma Ray	150
6	Micro Log Caliper (GAPI)	16
-200	SP (mV)	0

0	Micro Inverse 1 X 1	40
0	Micro Normal 2"	40
15000	Line Weight	0

LSPD





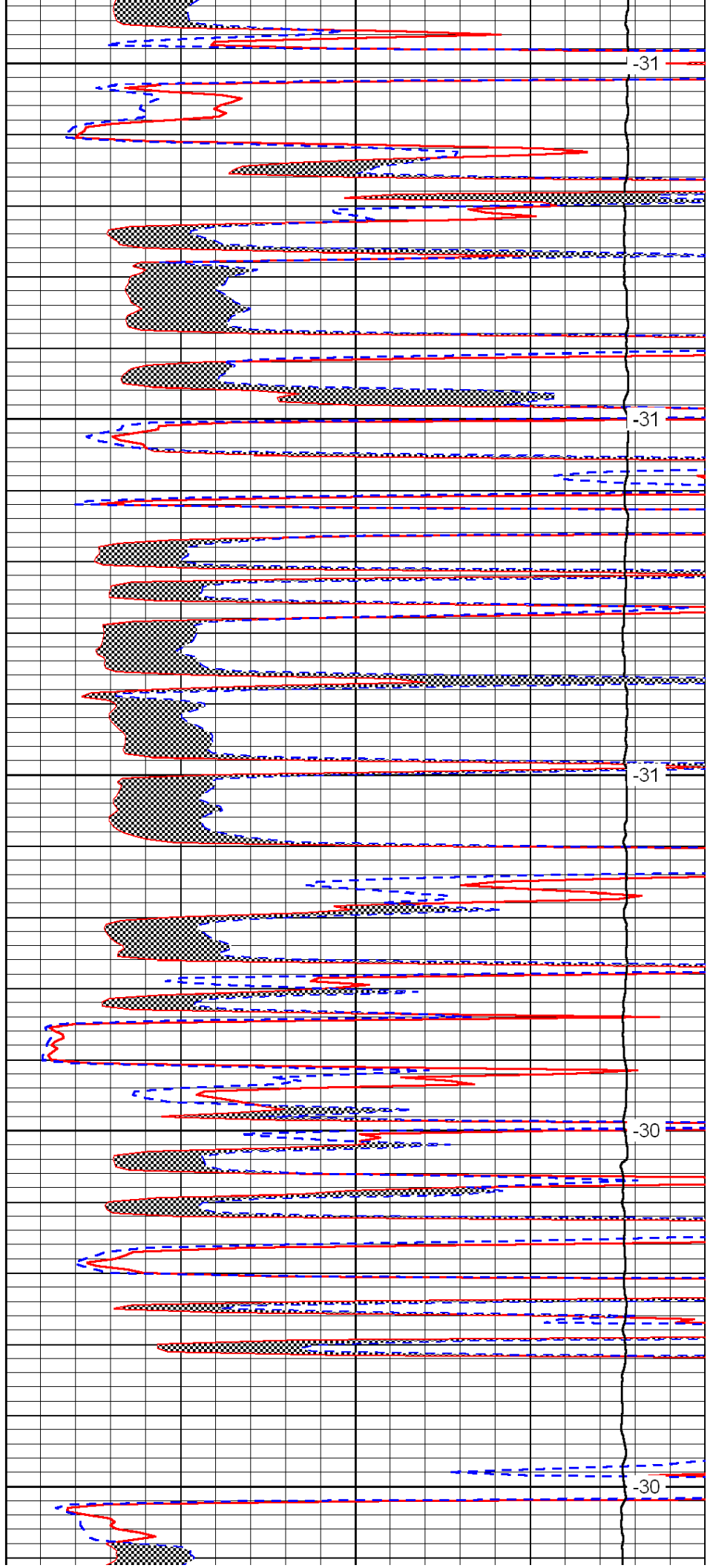
3800

3850

3900

3950

4000



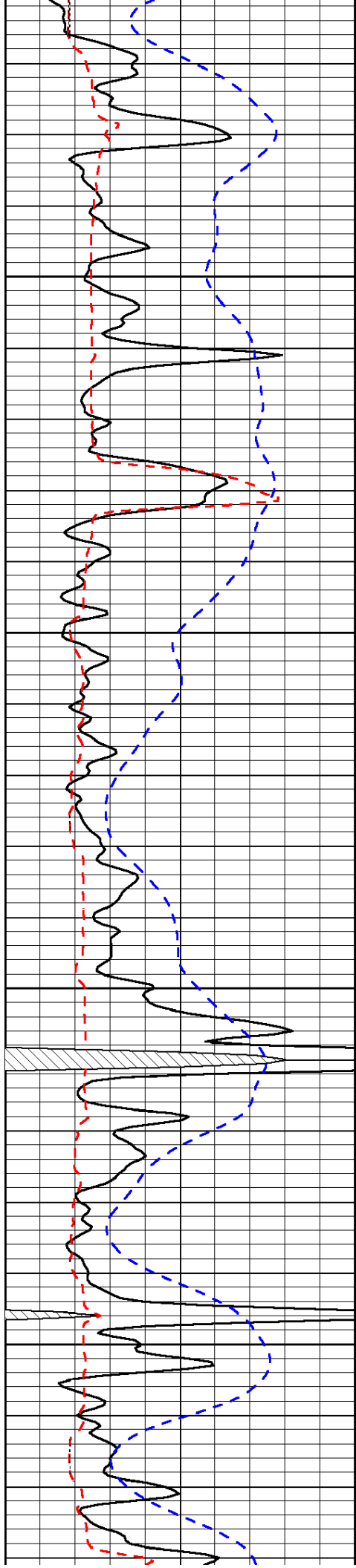
-31

-31

-31

-30

-30

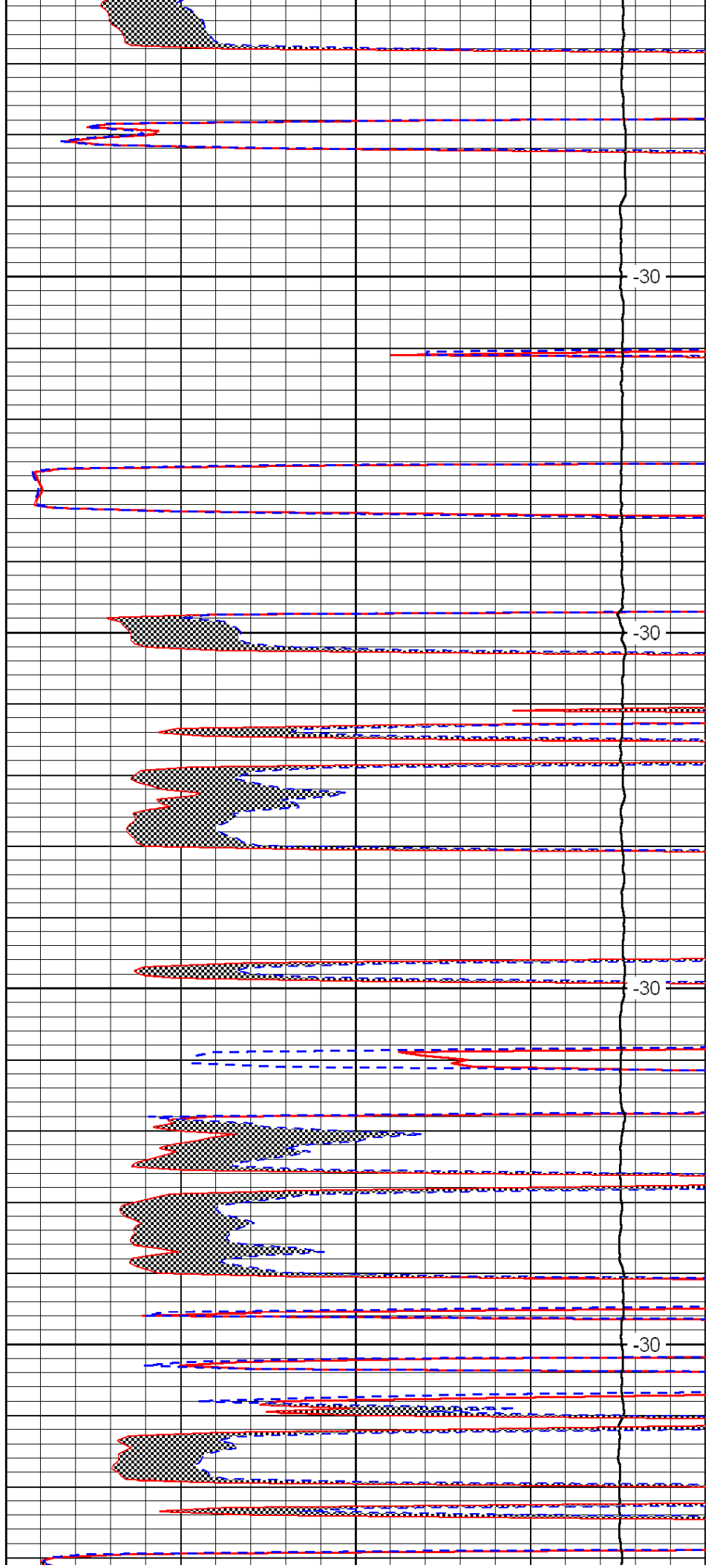


4050

4100

4150

4200

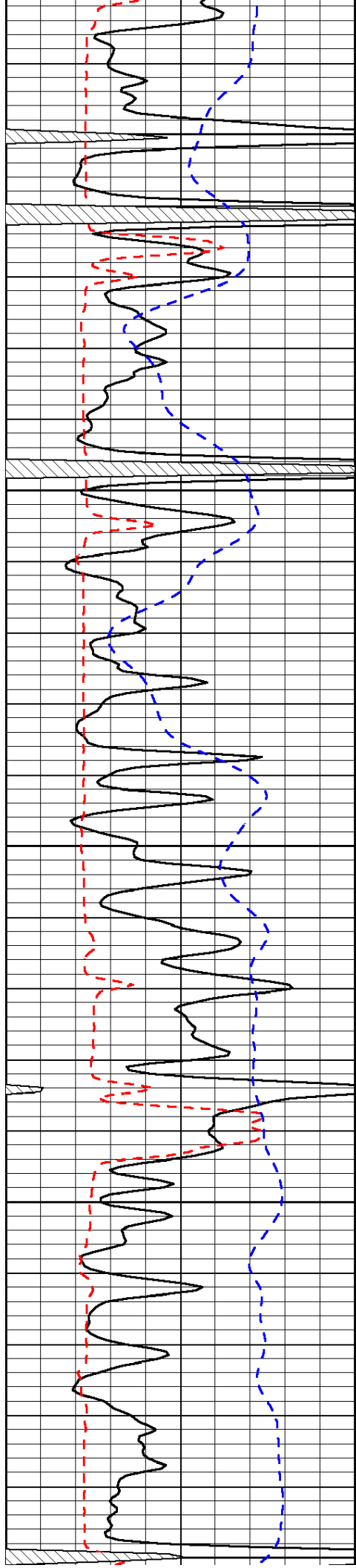


-30

-30

-30

-30



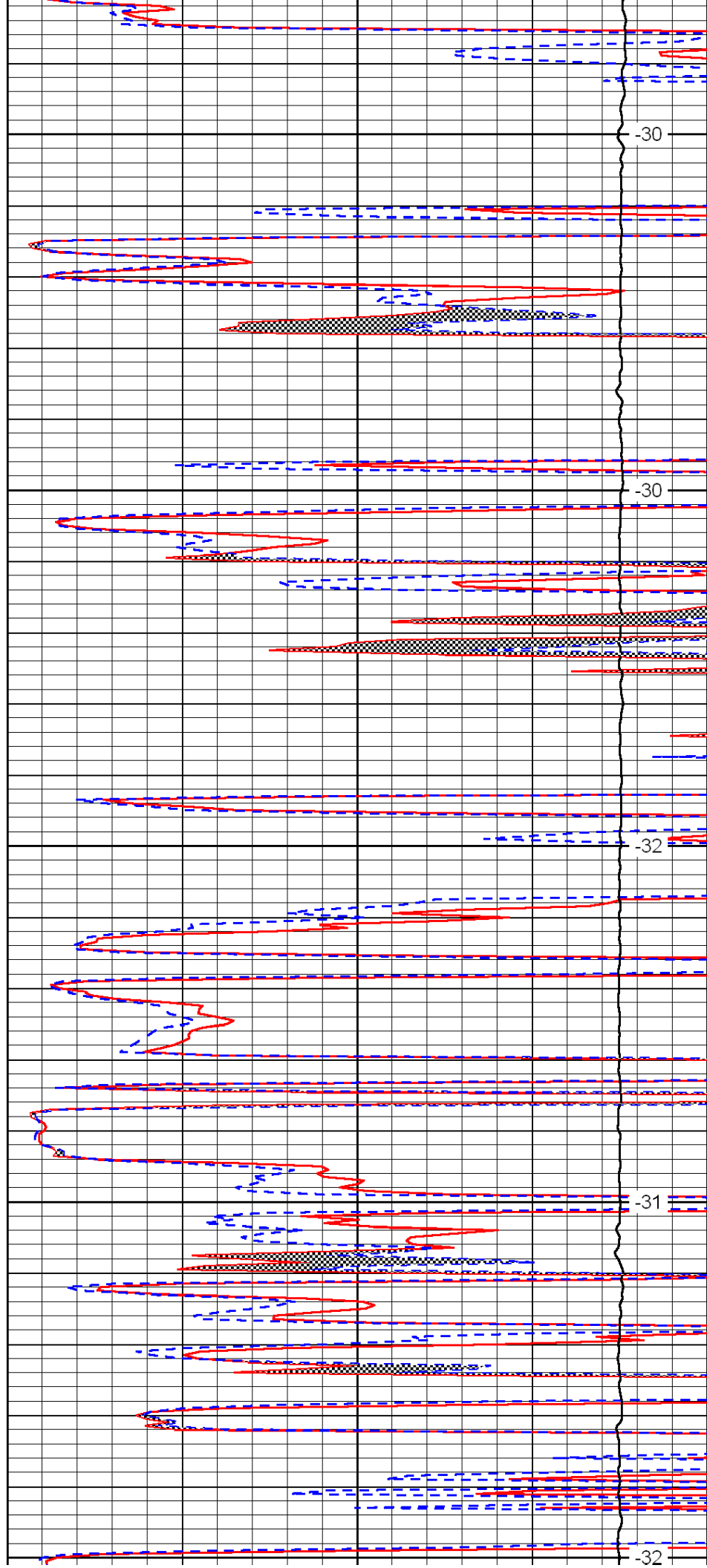
4250

4300

4350

4400

4450



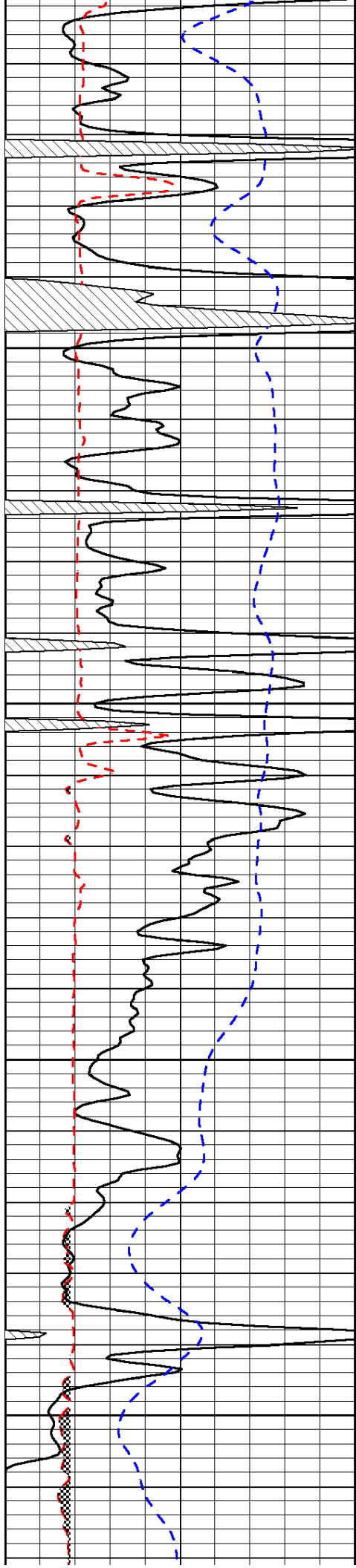
-30

-30

-32

-31

-32

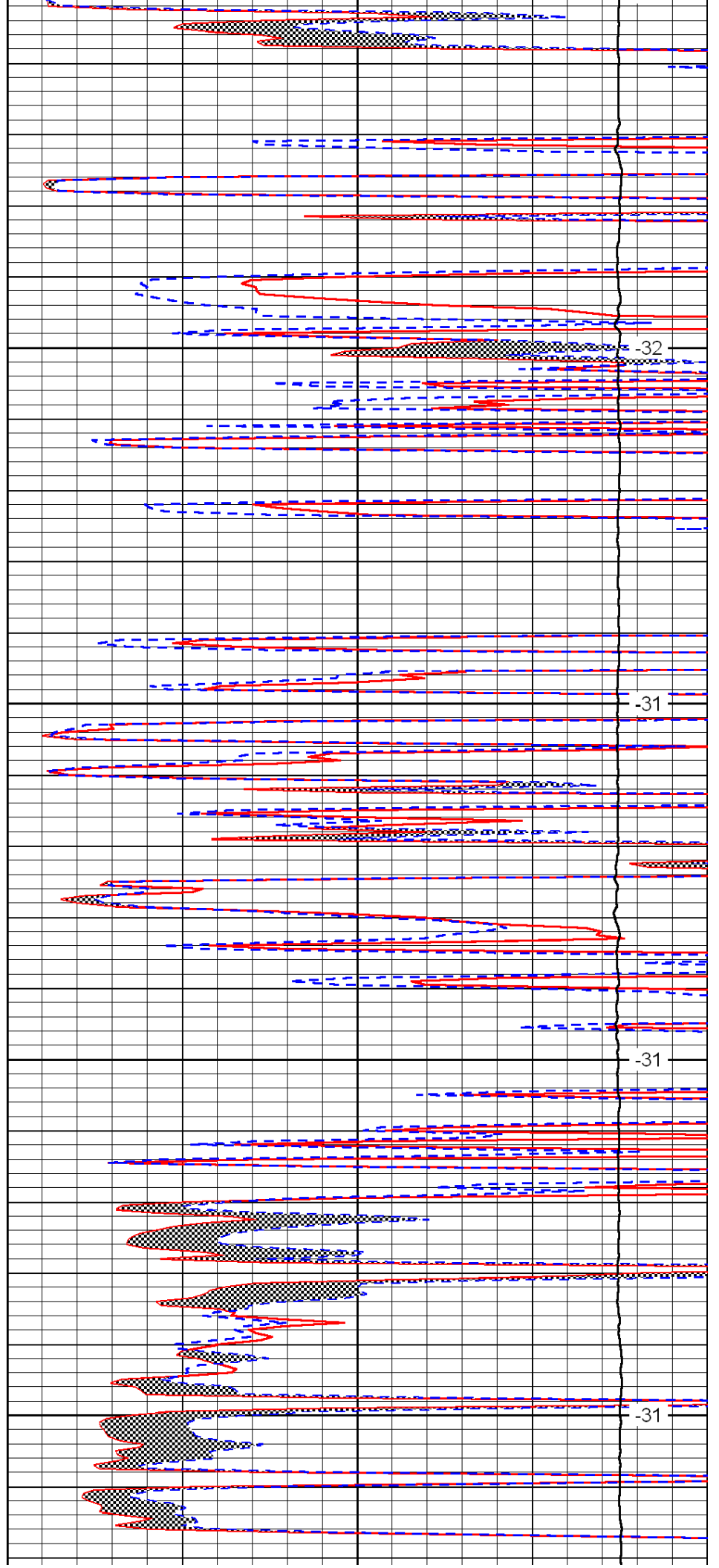


4500

4550

4600

4650

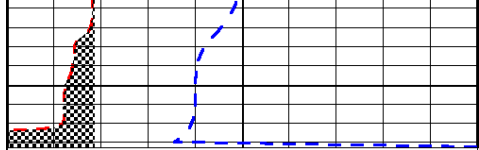


-32

-31

-31

-31



0	Gamma Ray	150
---	-----------	-----

6	Micro Log Caliper (GAPI)	16
---	--------------------------	----

-200	SP (mV)	0
------	---------	---



0	Micro Inverse 1 X 1	40
---	---------------------	----

0	Micro Normal 2"	40
---	-----------------	----

15000	Line Weight	0
-------	-------------	---

LSPD
