



Microresistivity Log

DIGITAL LOG (785) 625-3858

API No. 15-039-21125-00-00	Company Murfin Drilling Company, Inc.	Well Moore 'A' No 1-21	Field Wildcat
	County Decatur	State Kansas	
	Location 1160' FSL & 1620' FEL		Other Services CNL/CDL DIL/BHCS
	Sec: 21	Twp: 1 S	Rge: 29 W

Permanent Datum Ground Level	2727	Elevation
Log Measured From Kelly Bushing	5	Ft. Above Perm. Datum
Drilling Measured From Kelly Bushing		
Date	2/28/2011	
Run Number	Two	
Depth Driller	3965	
Depth Logger	3966	
Bottom Logged Interval	3965	
Top Log Interval	3000	
Casing Driller	8.625 @ 263	
Casing Logger	261	
Bit Size	7.875	
Type Fluid in Hole	Chemical	
Salinity, ppm CL	2.000	
Density / Viscosity	9.2 50	
pH / Fluid Loss	11.0 6.4	
Source of Sample	Flowline	
Rm @ Meas. Temp	1.90 @ 60	
Rmf @ Meas. Temp	1.43 @ 60	
Rmc @ Meas. Temp	2.57 @ 60	
Source of Rmf / Rmc	Charts	
Rm @ BHT	0.99 @ 116	
Operating Rig Time	5 Hours	
Max Rec. Temp. F	116	
Equipment Number	15	
Location	Hays	
Recorded By	B. Becker	
Witnessed By	Paul Gunzelman	

<<< Fold Here >>>

All interpretations are opinions based on inferences from electrical or other measurements and we cannot and do not guarantee the accuracy or correctness of any interpretation, and we shall not, except in the case of gross or willful negligence on our part, be liable or responsible for any loss, costs, damages, or expenses incurred or sustained by anyone resulting from any interpretation made by any of our officers, agents or employees. These interpretations are also subject to our general terms and conditions set out in our current Price Schedule.

Comments

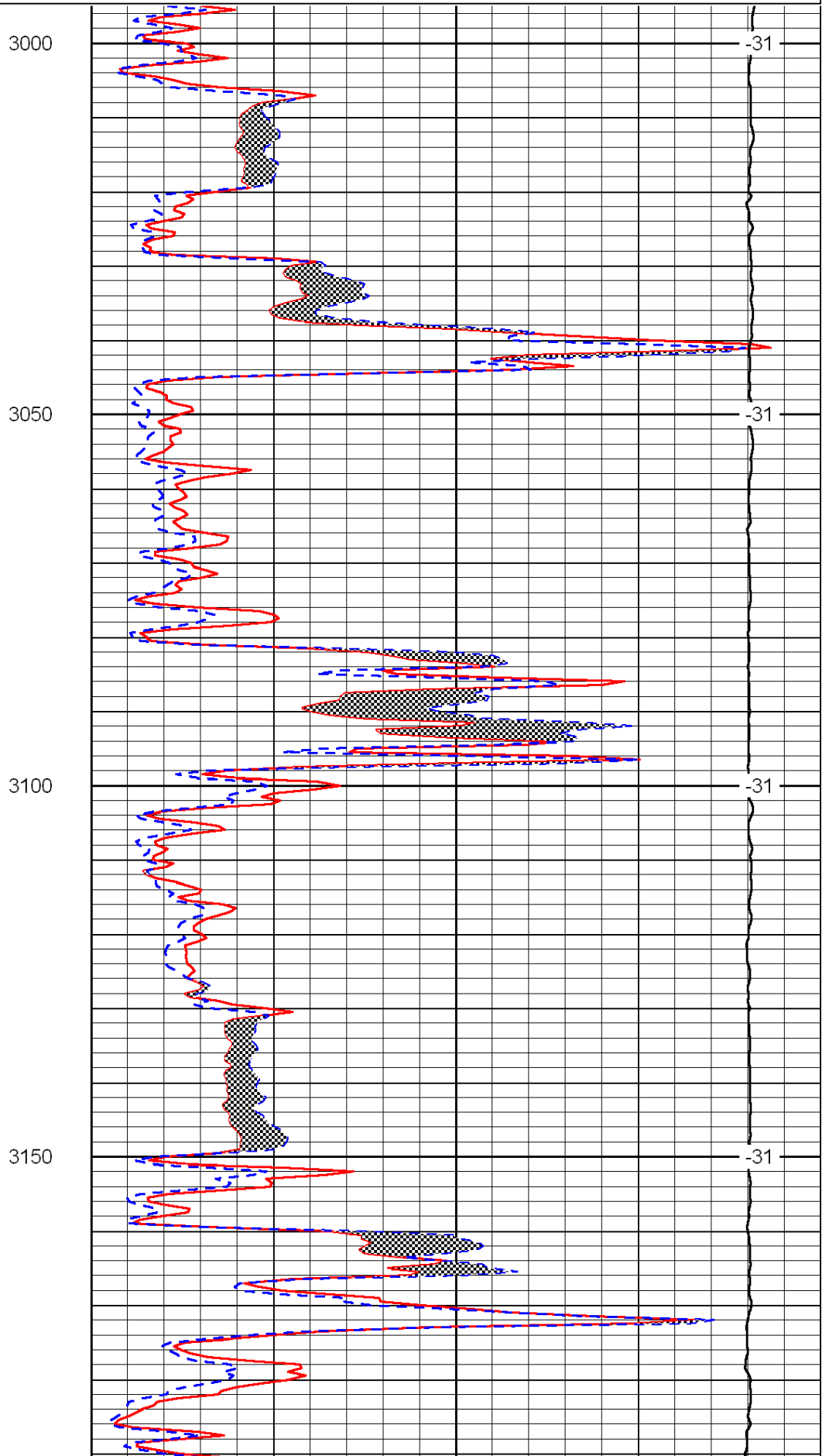
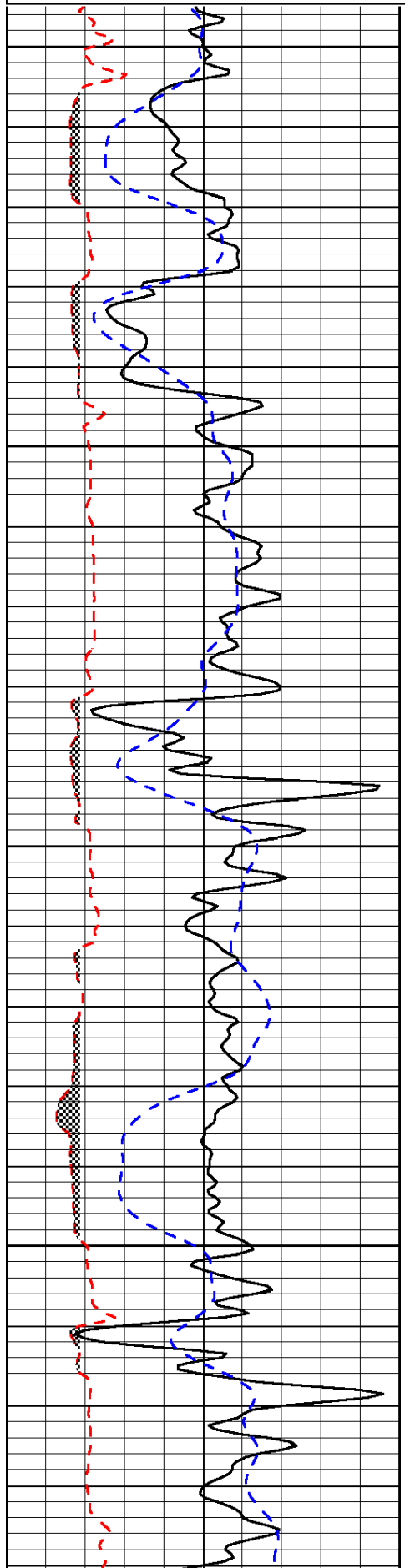
Thank you for using Log-Tech, Inc.
(785) 625-3858

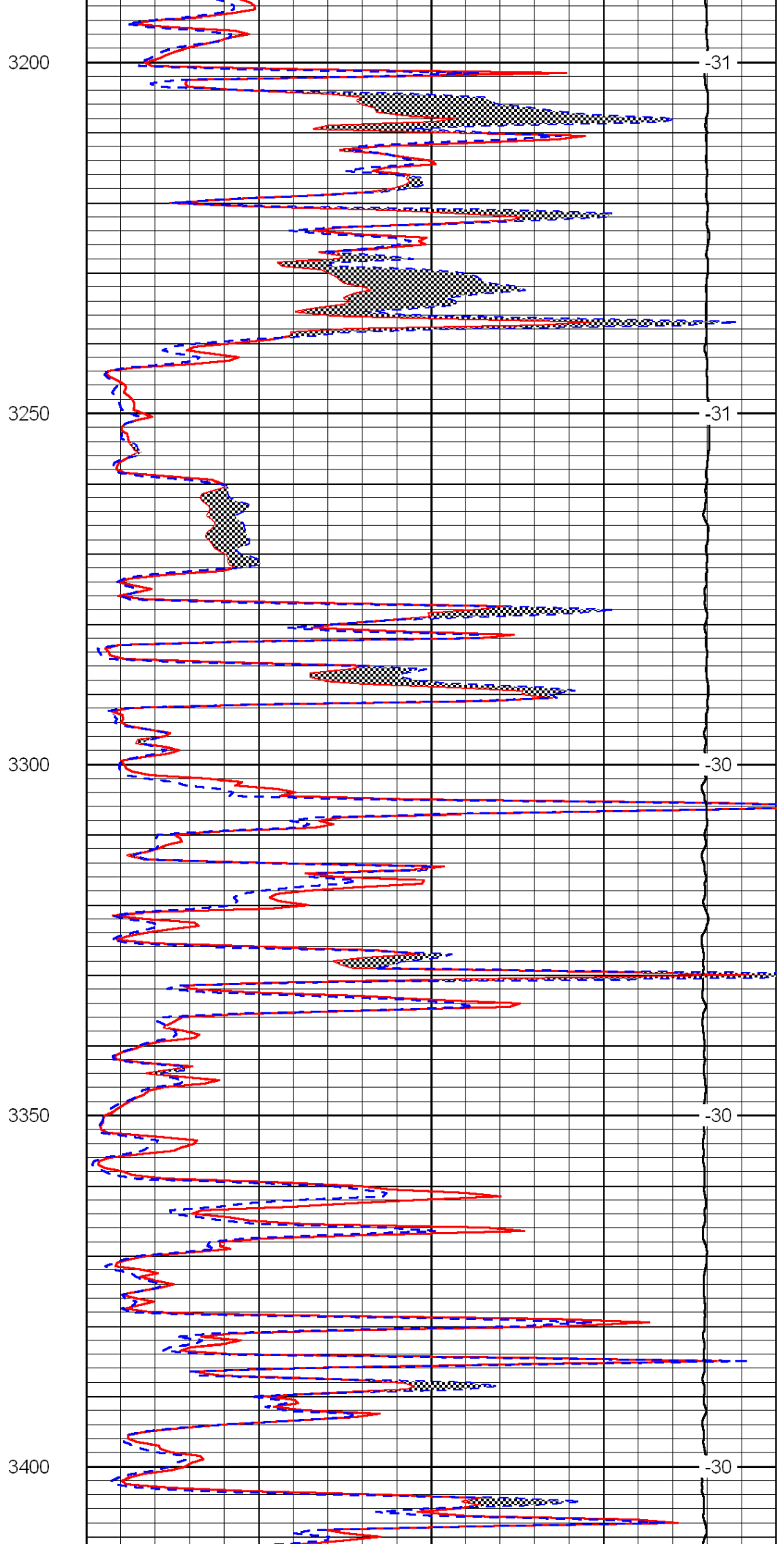
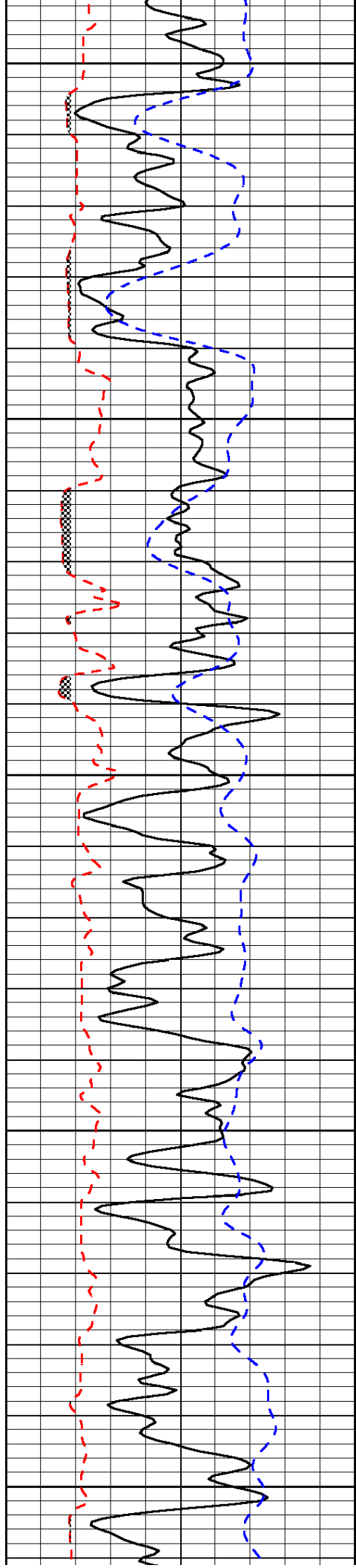
Oberlin, Ks; 10-1/2 North to Cedar Bluffs;
West to stop sign; 1/4 South; 1 West;
2-1/2 South; West and North Into

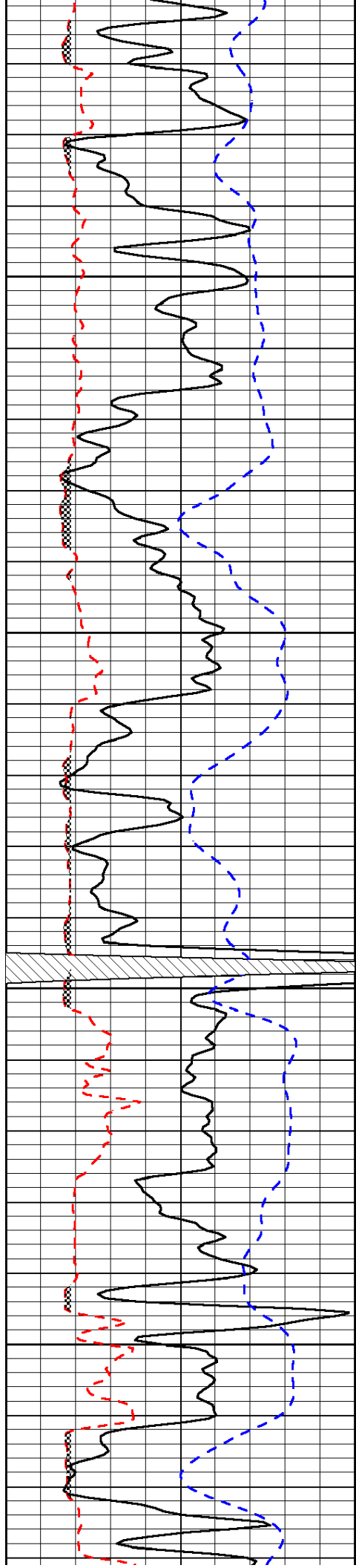
0	Gamma Ray	150
6	Micro Log Caliper (GAPI)	16
-200	SP (mV)	0

0	Micro Inverse 1 X 1	40
0	Micro Normal 2"	40
15000	Line Weight	0

LSPD





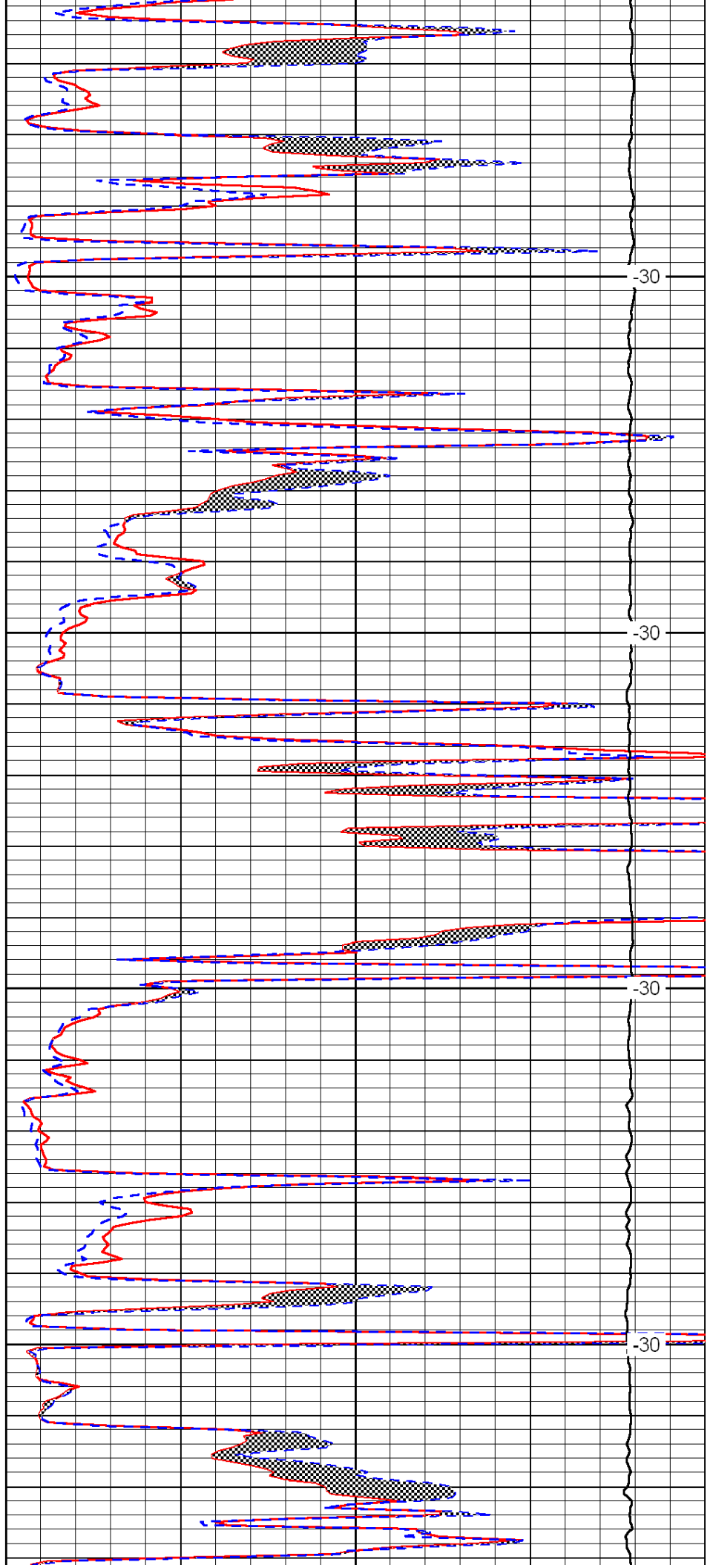


3450

3500

3550

3600

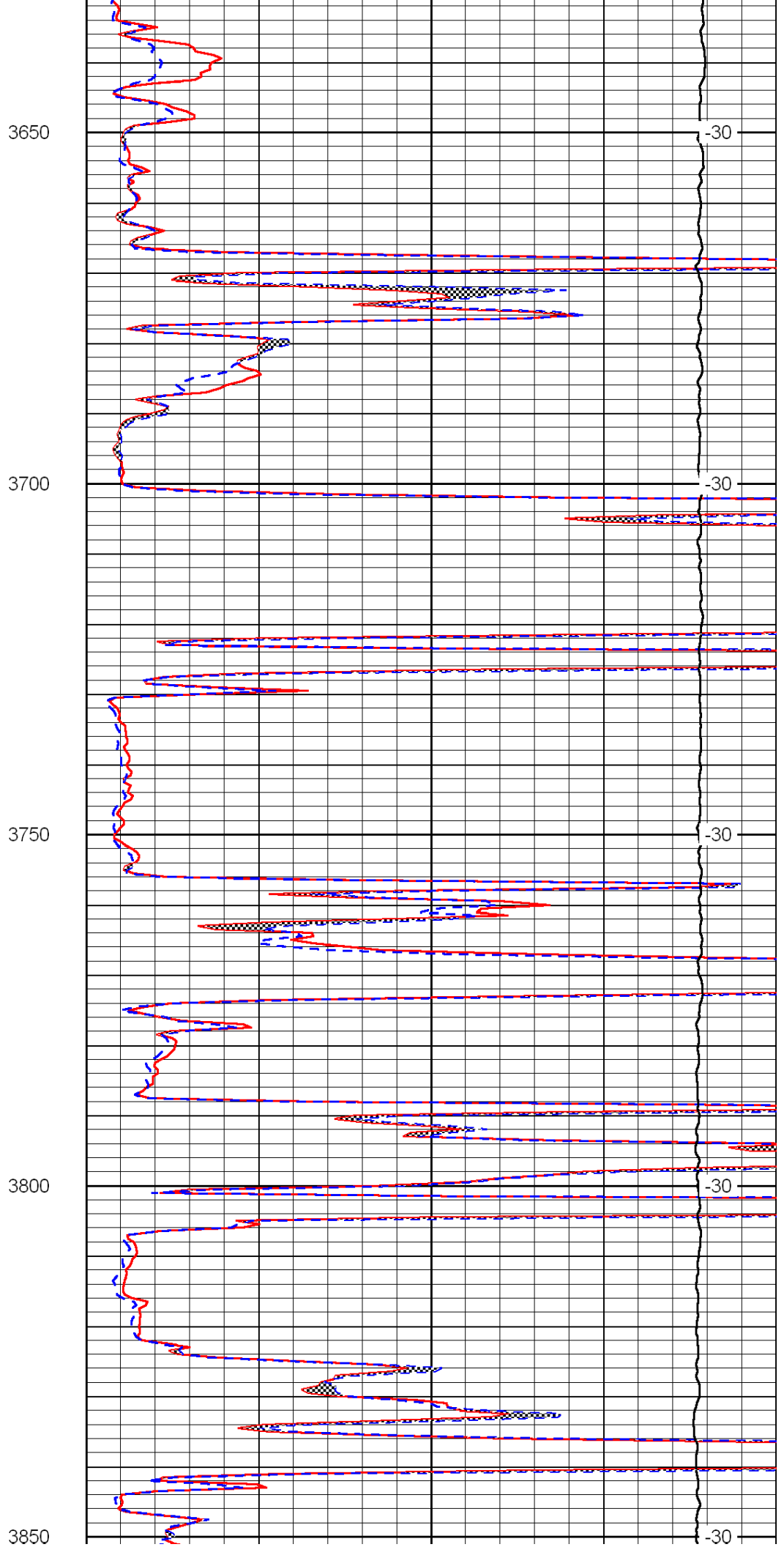
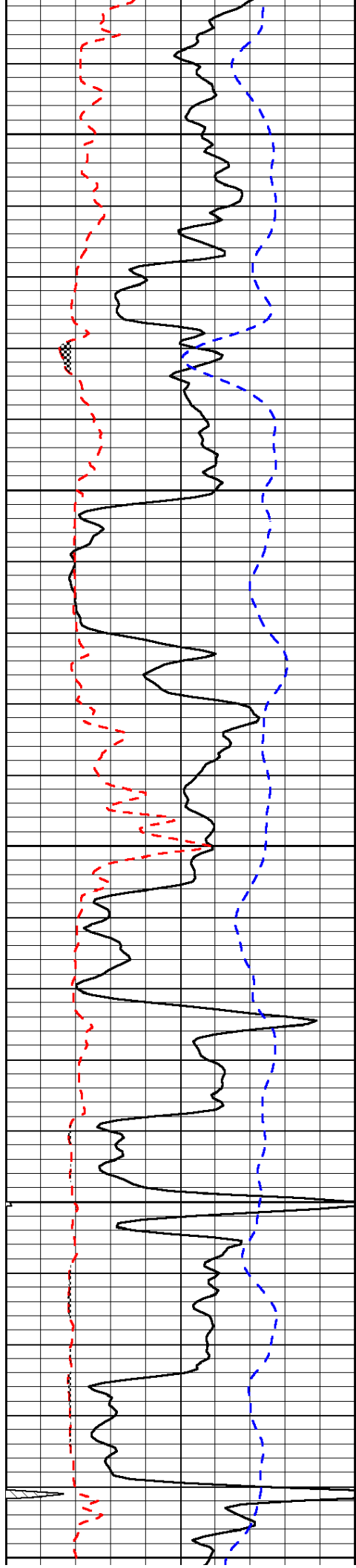


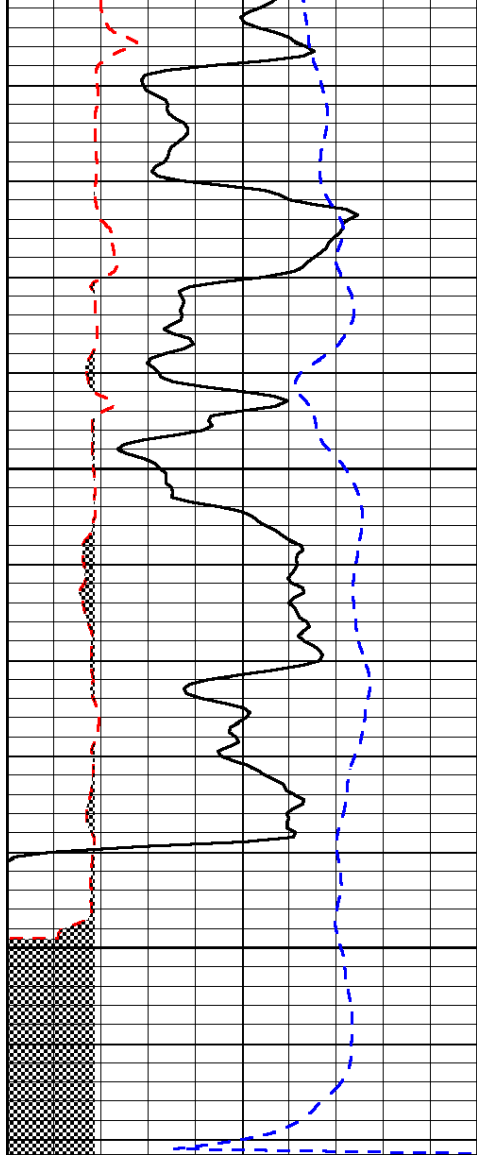
-30

-30

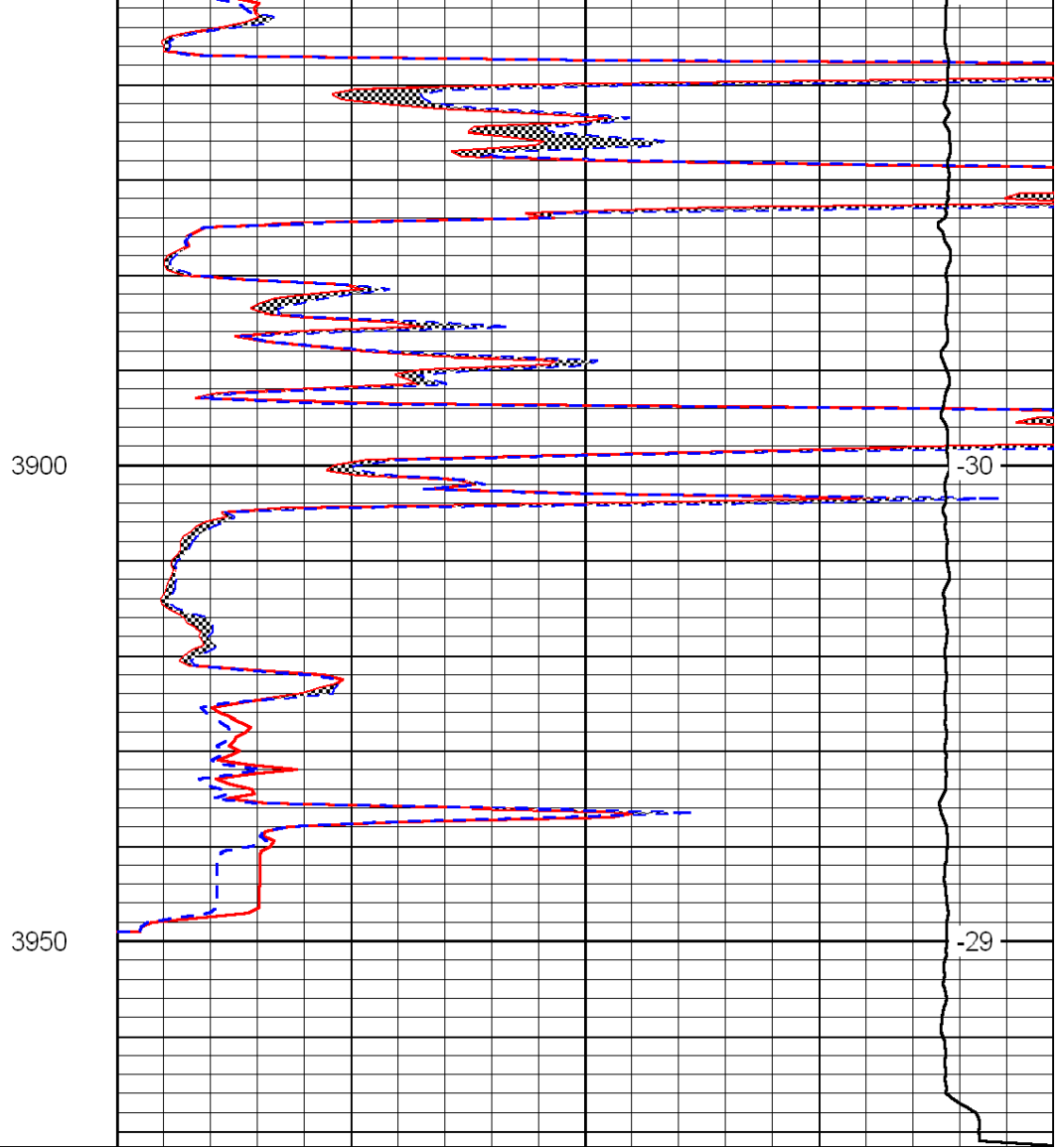
-30

-30





0	Gamma Ray	150
6	Micro Log Caliper (GAPI)	16
-200	SP (mV)	0



0	Micro Inverse 1 X 1	40
0	Micro Normal 2''	40
15000	Line Weight	0

LSPD