



**Borehole Compensated
Sonic Log**

DIGITAL LOG (785) 625-3858

API No.	15-039-21125-00-00		
Company	Murfin Drilling Company, Inc.		
Well	Moore 'A' No 1-21		
Field	Wildcat		
County	Decatur		
State	Kansas		
Location	1160' FSL & 1620' FEL		
Sec: 21	Twp: 1 S	Rge: 29 W	Other Services CNL/CDL MEL/DIL
Permanent Datum	Ground Level	Elevation 2727	Elevation
Log Measured From	Kelly Bushing	5 Ft. Above Perm. Datum	K.B. 2732
Drilling Measured From	Kelly Bushing		D.F. 2727
Date	2/28/2011		

Run Number	Two
Type Log	BHC Sonic
Depth Driller	3965
Depth Logger	3966
Bottom Logged Interval	3955
Top Logged Interval	250
Type Fluid In Hole	Chemical
Salinity, PPM CL	2,000
Density	9.2
Level	Full
Max. Rec. Temp. F	116
Operating Rig Time	5 Hours
Equipment -- Location	15 Hays
Recorded By	B. Becker
Witnessed By	Paul Gunzelman

Borehole Record				Casing Record			
Run No.	Bit	From	To	Size	Wgt.	From	To
1	12.25	00	263	8.625	24#	00	263
2	7.875	263	3965				

<<< Fold Here >>>

All interpretations are opinions based on inferences from electrical or other measurements and we cannot and do not guarantee the accuracy or correctness of any interpretation, and we shall not, except in the case of gross or willful negligence on our part, be liable or responsible for any loss, costs, damages, or expenses incurred or sustained by anyone resulting from any interpretation made by any of our officers, agents or employees. These interpretations are also subject to our general terms and conditions set out in our current Price Schedule.

Comments

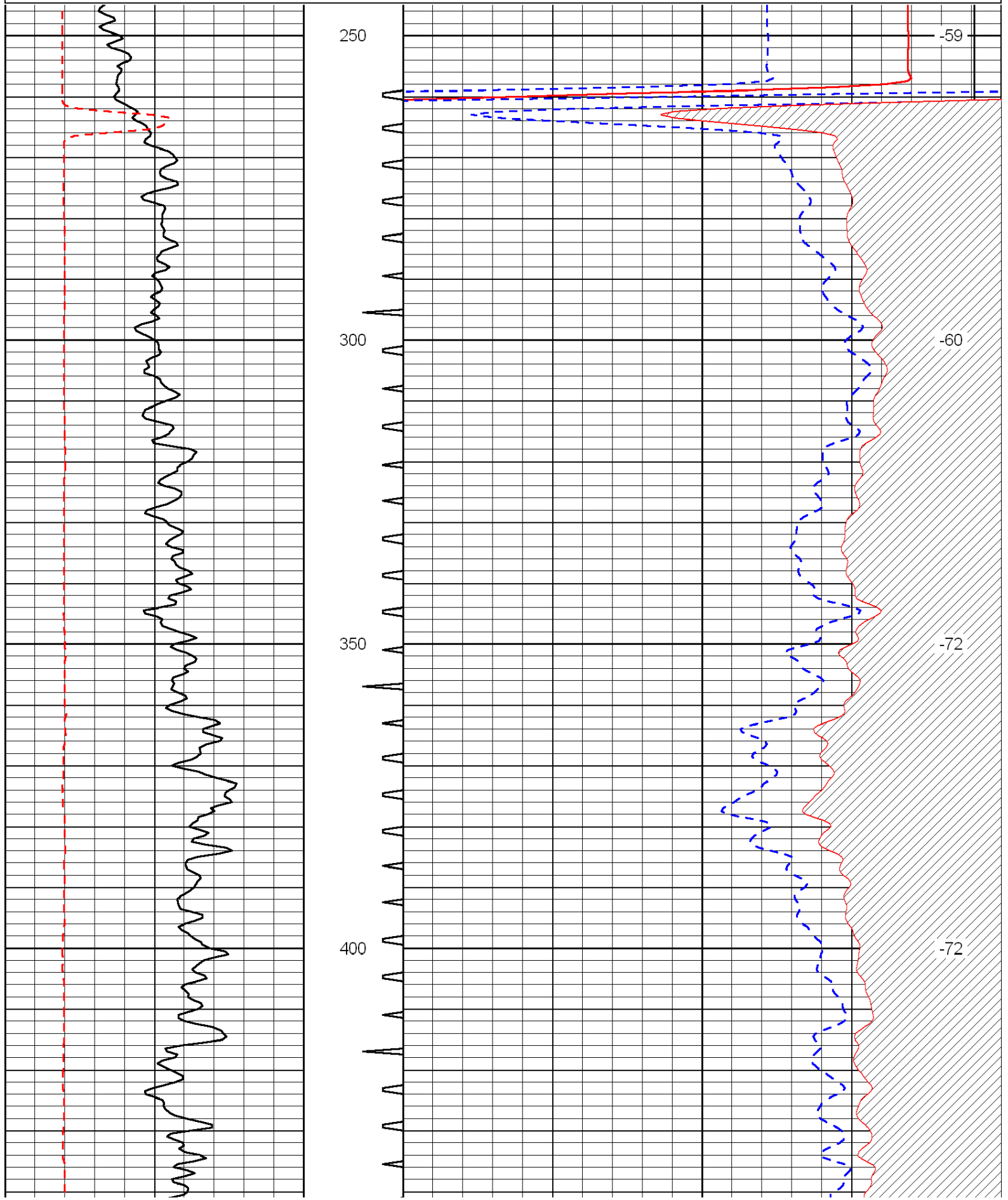
Thank you for using Log-Tech, Inc.
 (785) 625-3858

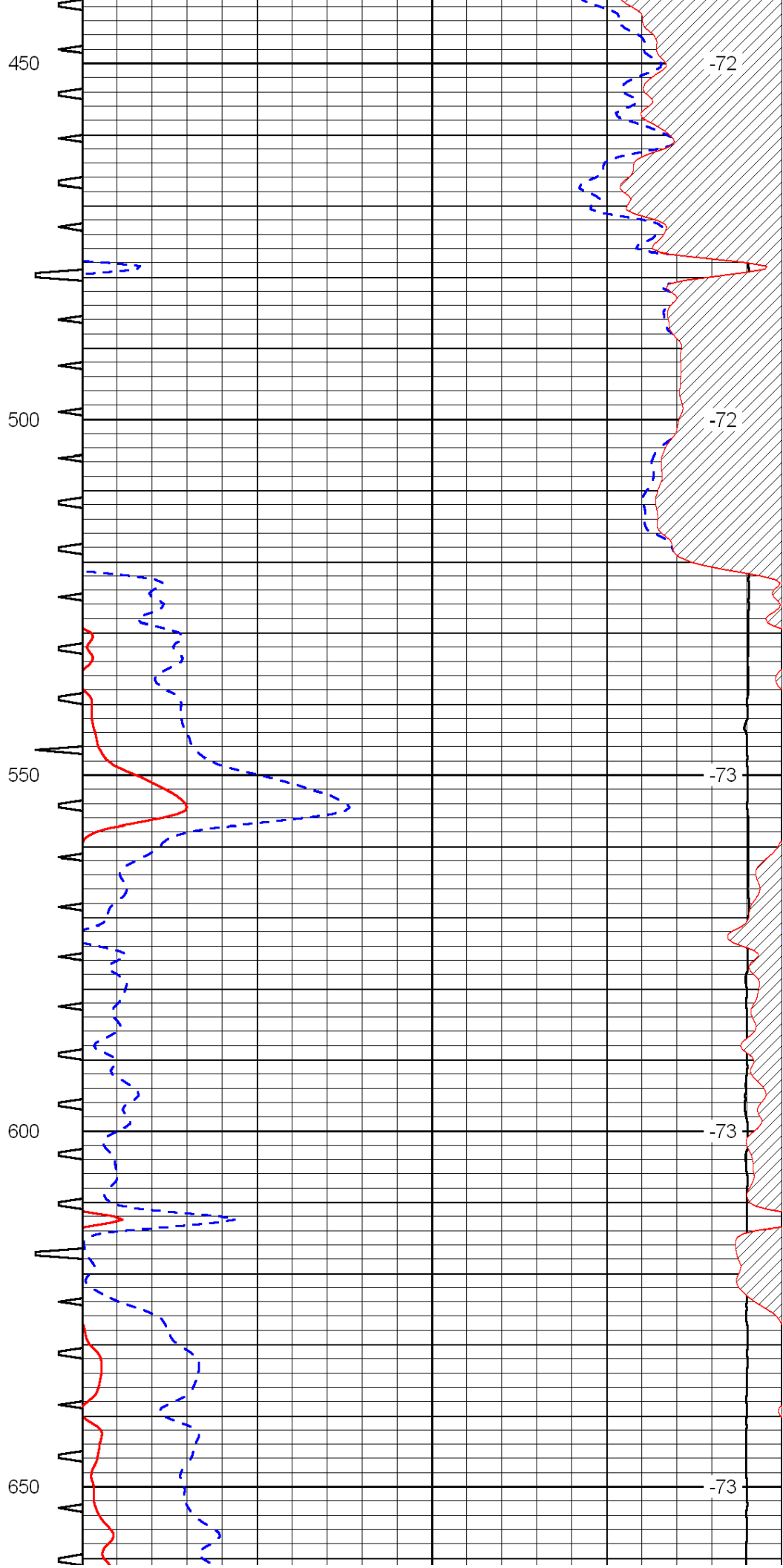
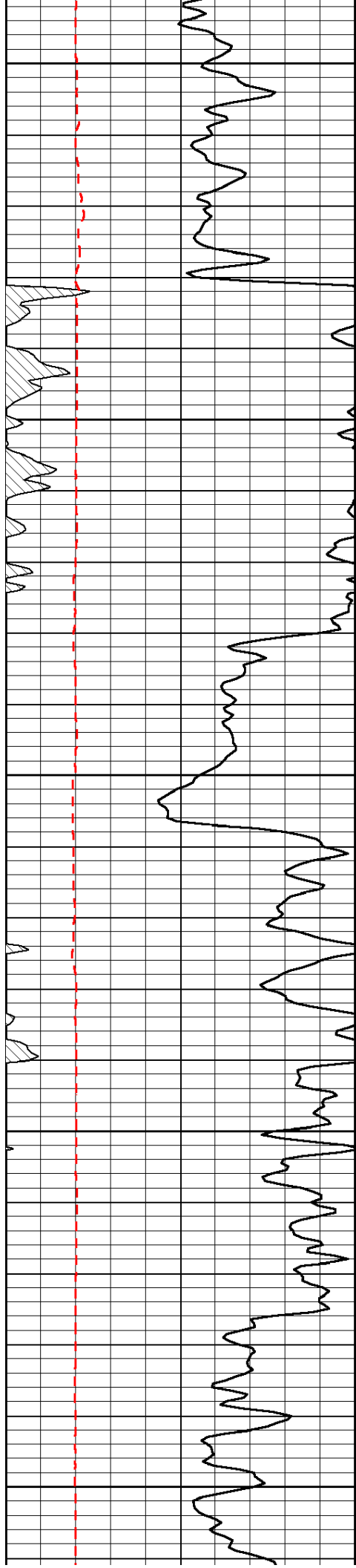
 Oberlin, Ks; 10-1/2 North to Cedar Bluffs;
 West to stop sign; 1/4 South; 1 West;
 2-1/2 South; West and North Into

Database File: c:\warrior\data\murfin_moore 'a' no 1-21\murfinhd.db
 Dataset Pathname: DIL\murfdil
 Presentation Format: sonic
 Dataset Creation: Tue Mar 01 01:30:47 2011
 Charted by: Depth in Feet scaled 1:240

0	Gamma Ray	150	Sonic Int	140	Delta Time (usec/ft)	40
150	Gamma Ray	300	5	0	SPOR	-10
6	Caliper (GAPI)	16		15000	LTEN (lb)	0

LSPD





450

500

550

600

650

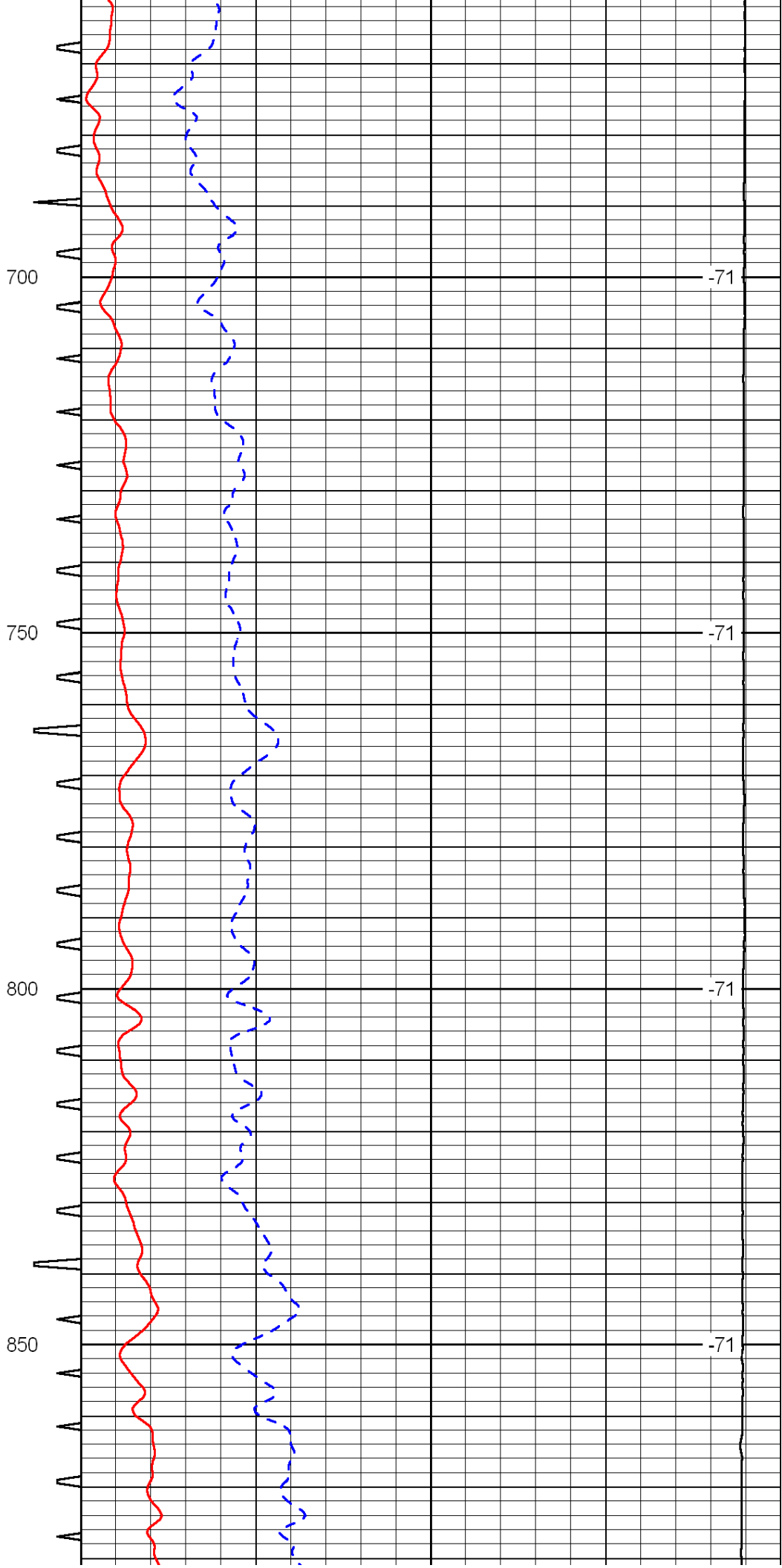
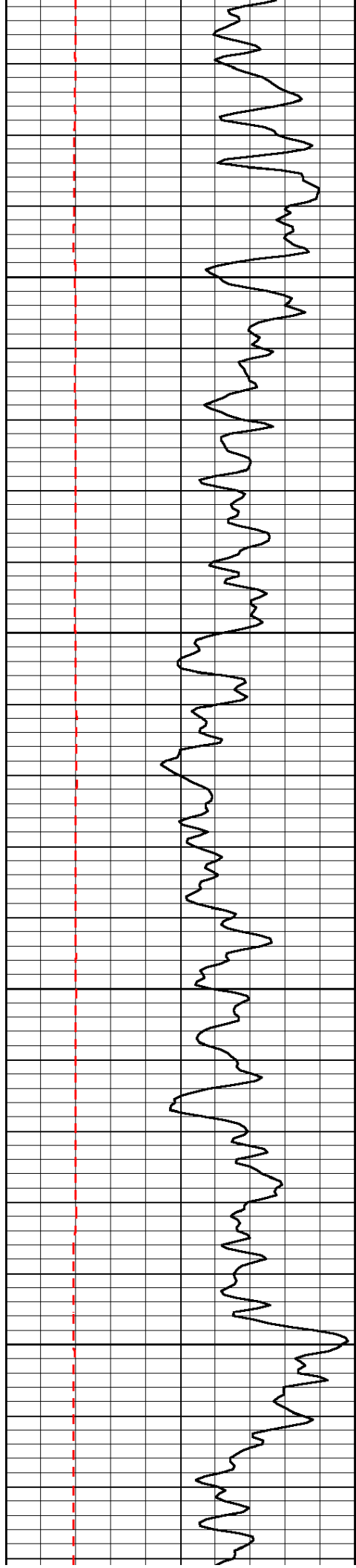
-72

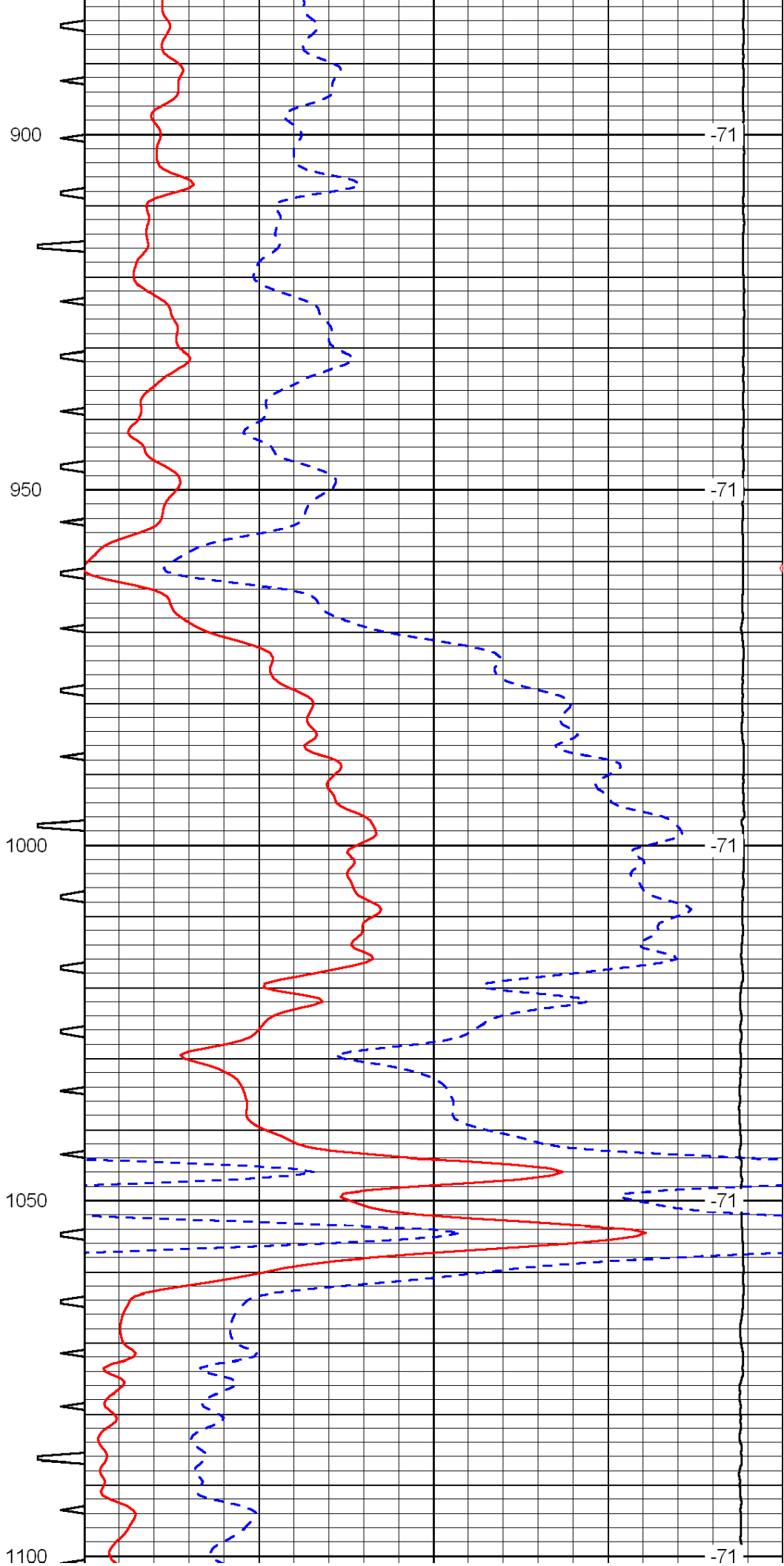
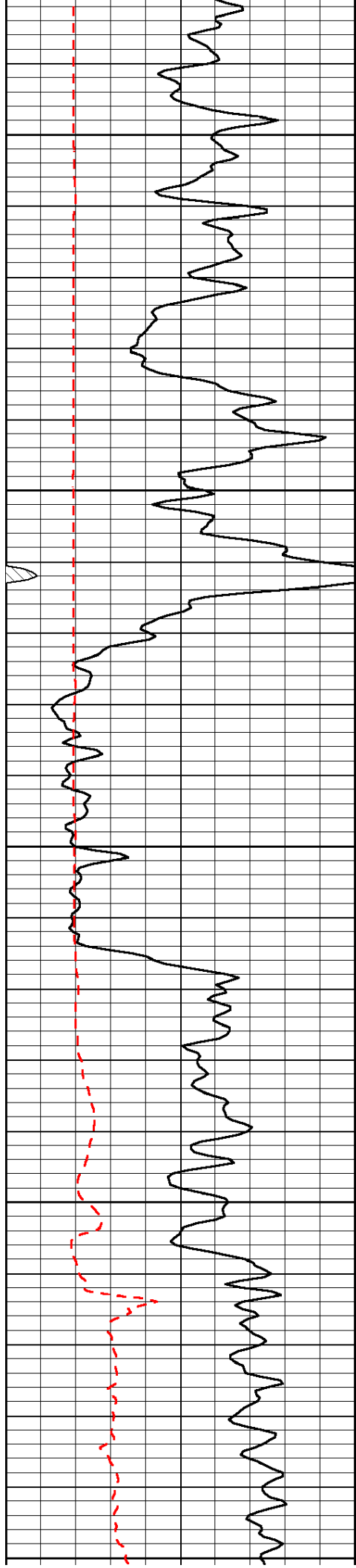
-72

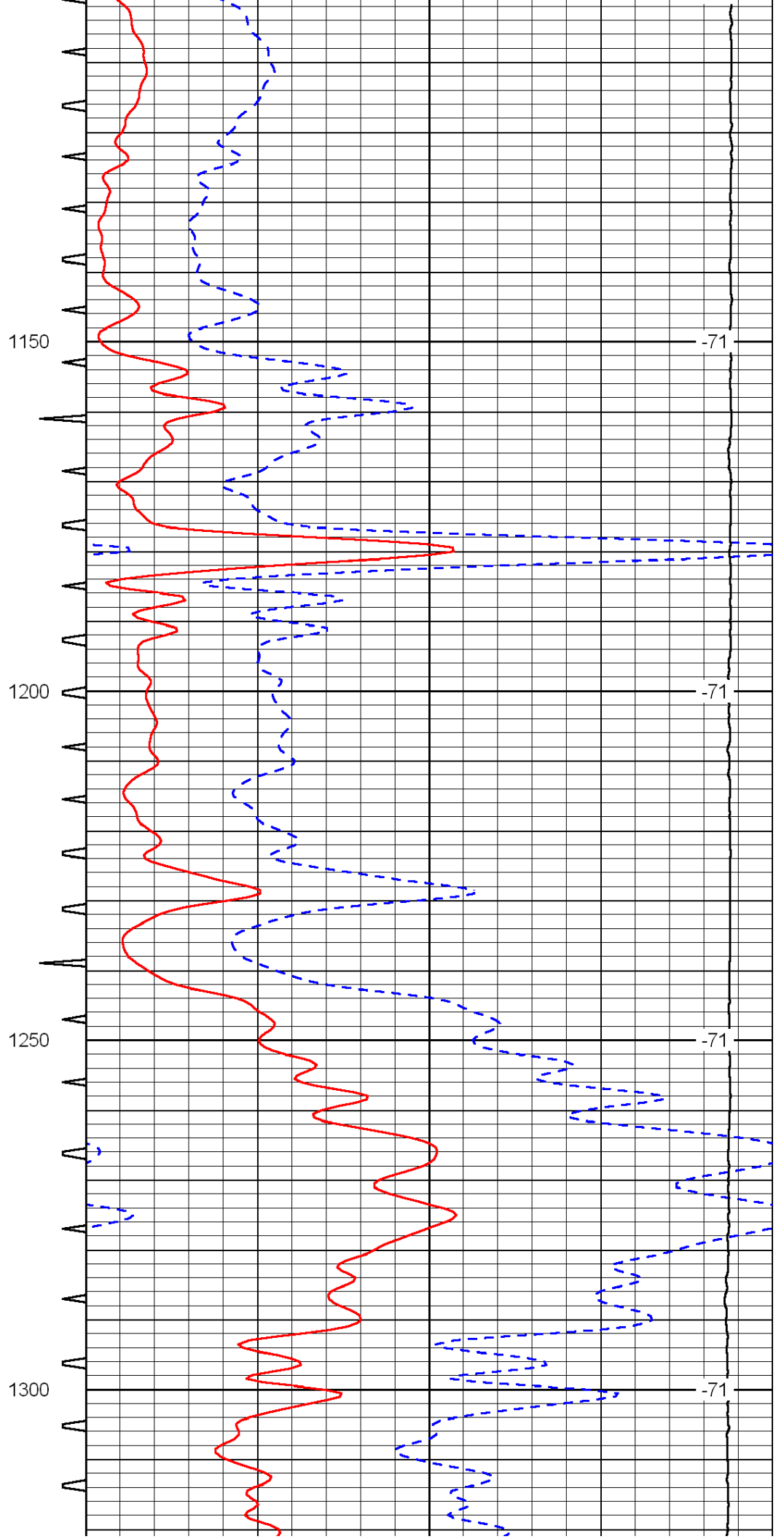
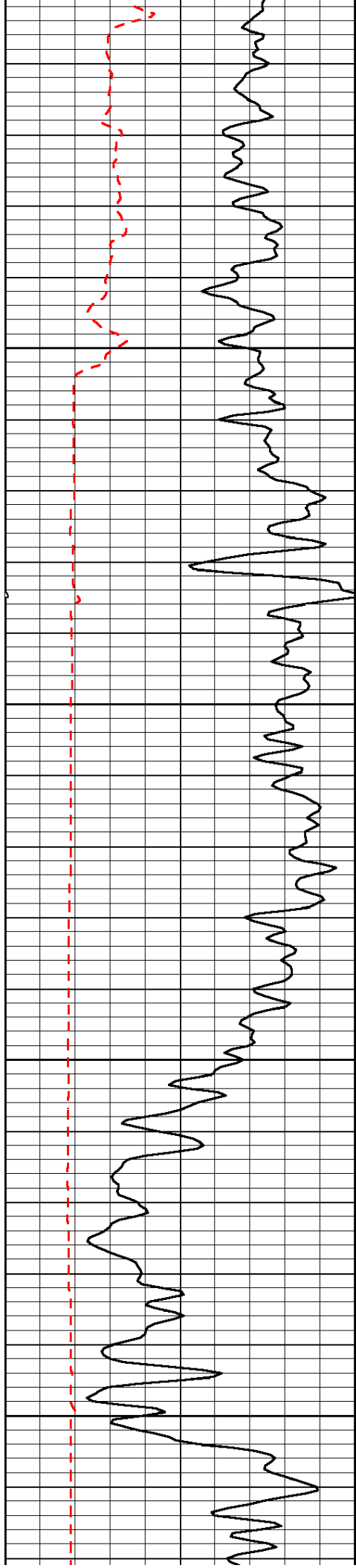
-73

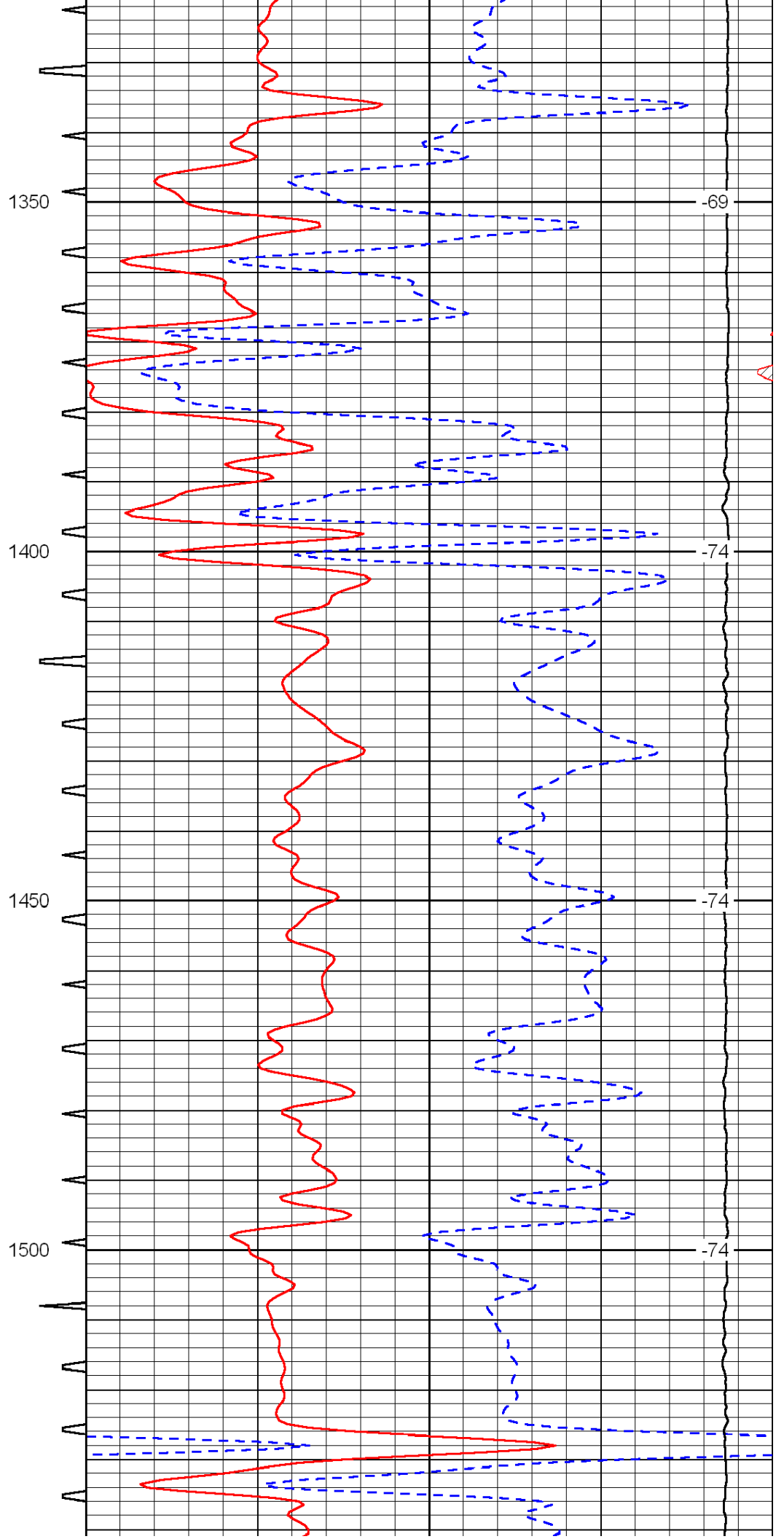
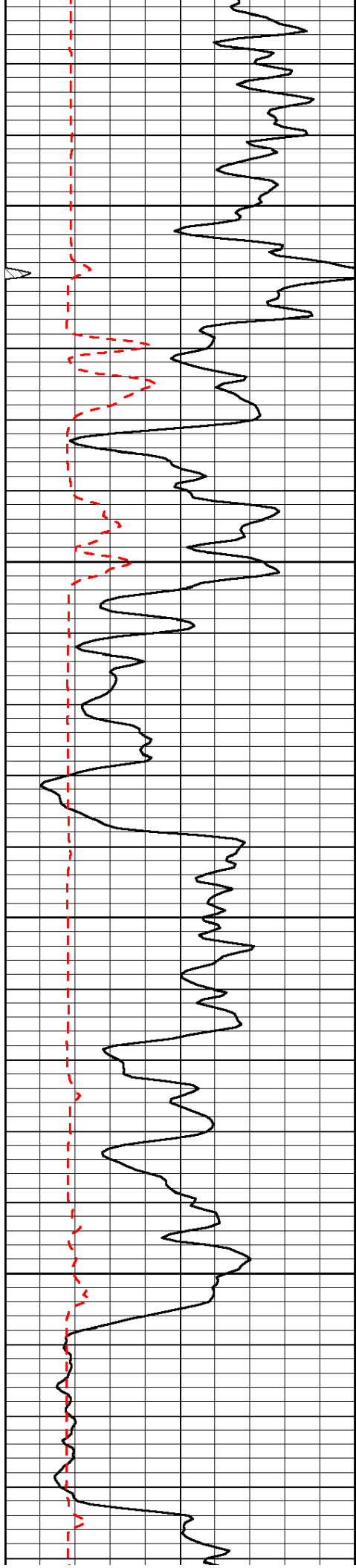
-73

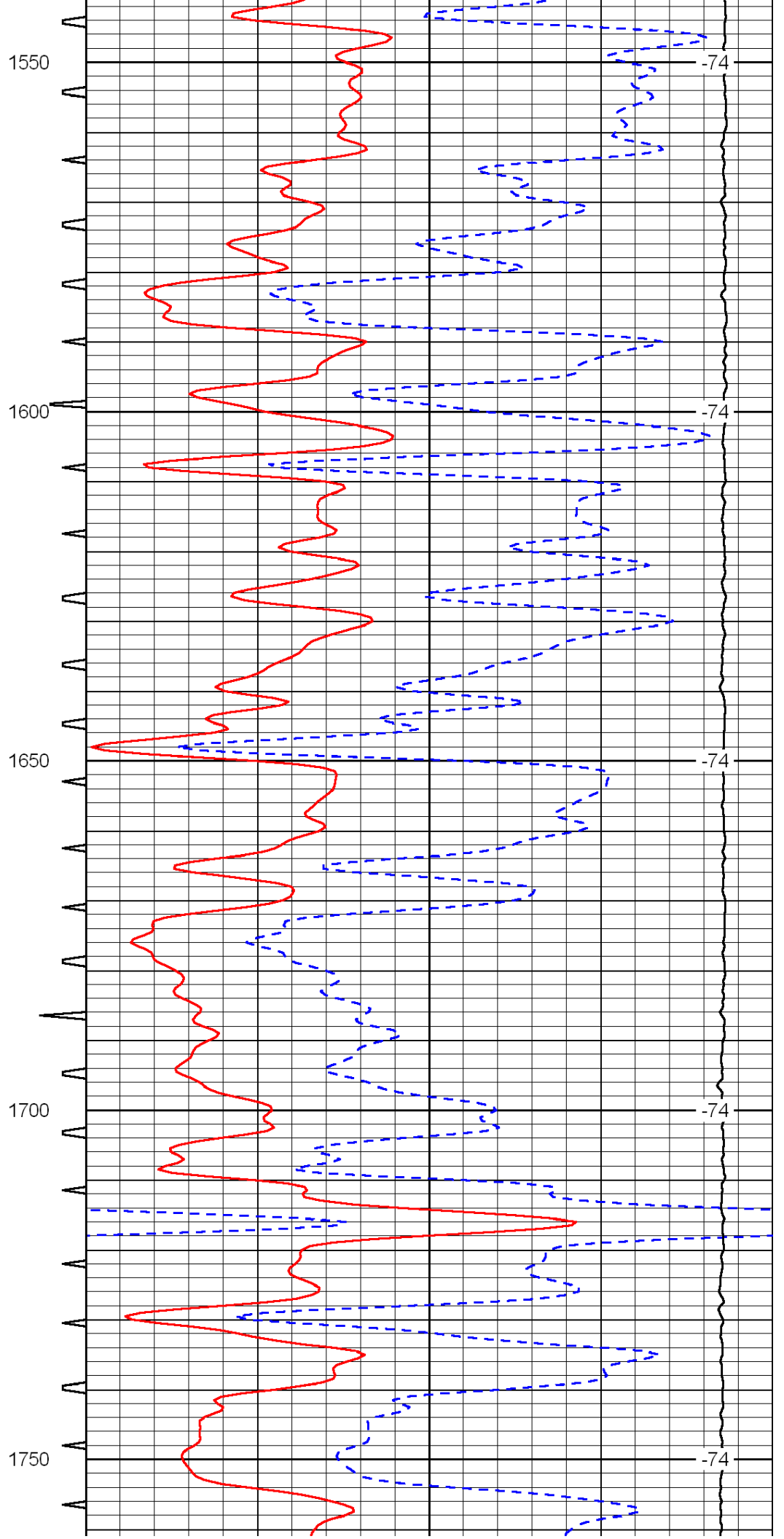
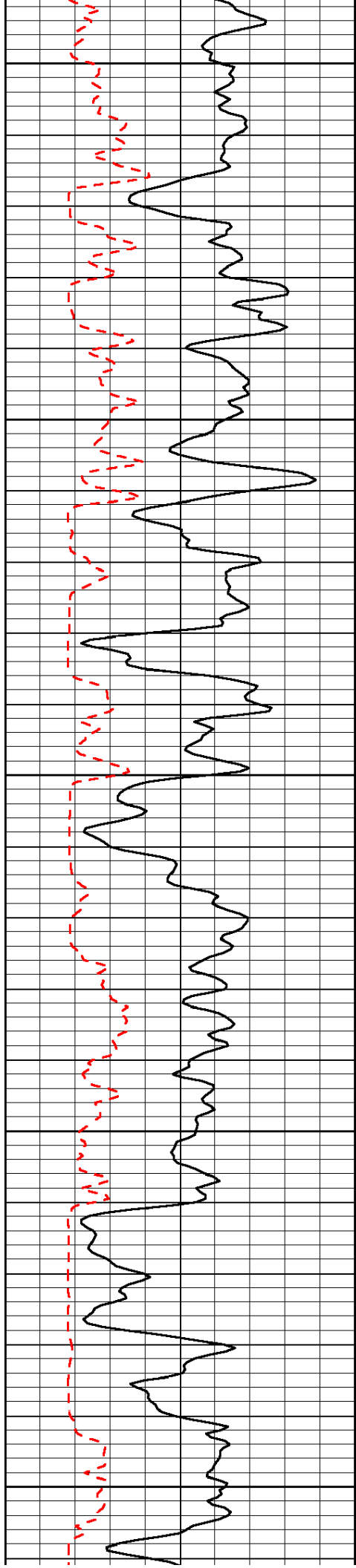
-73

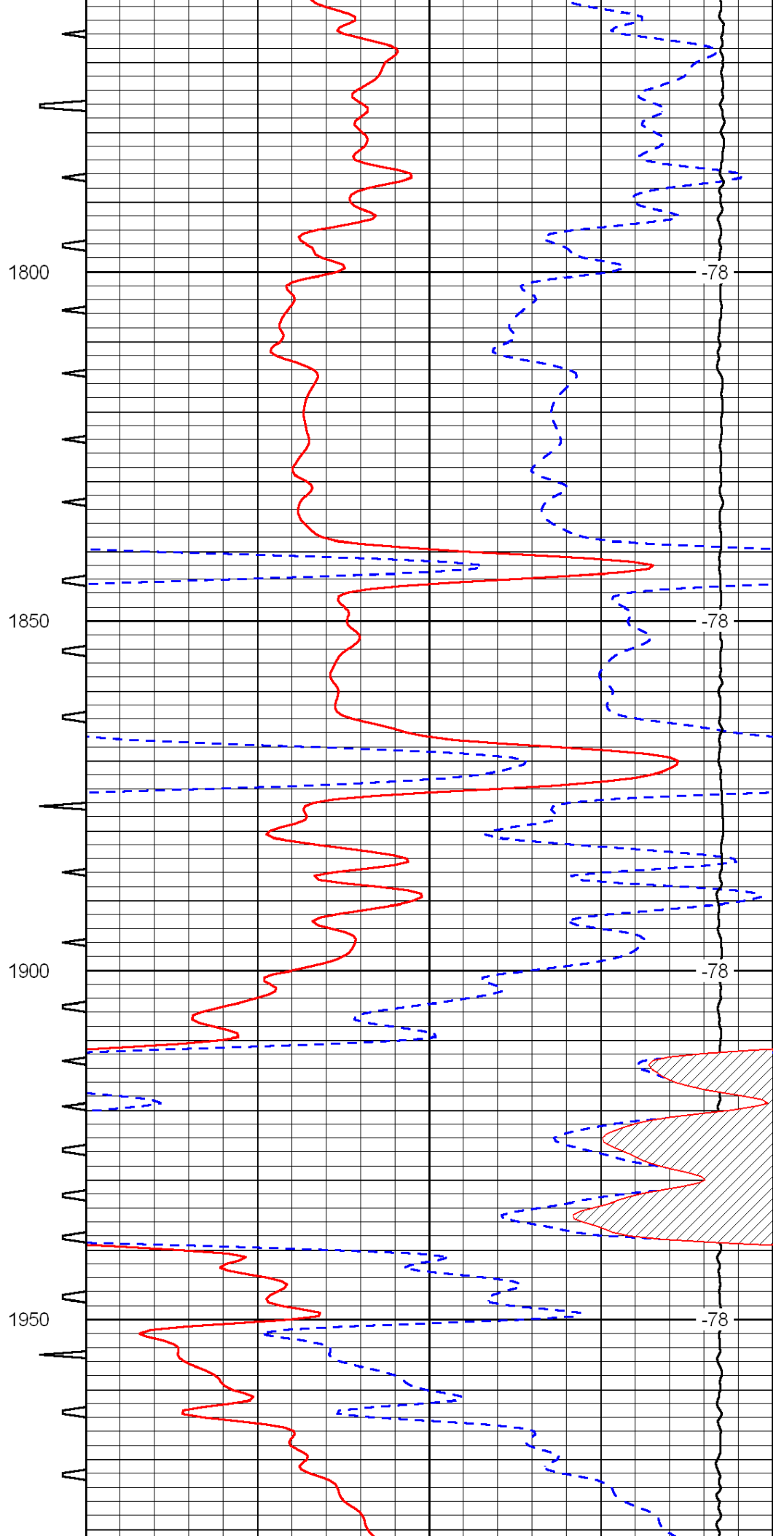
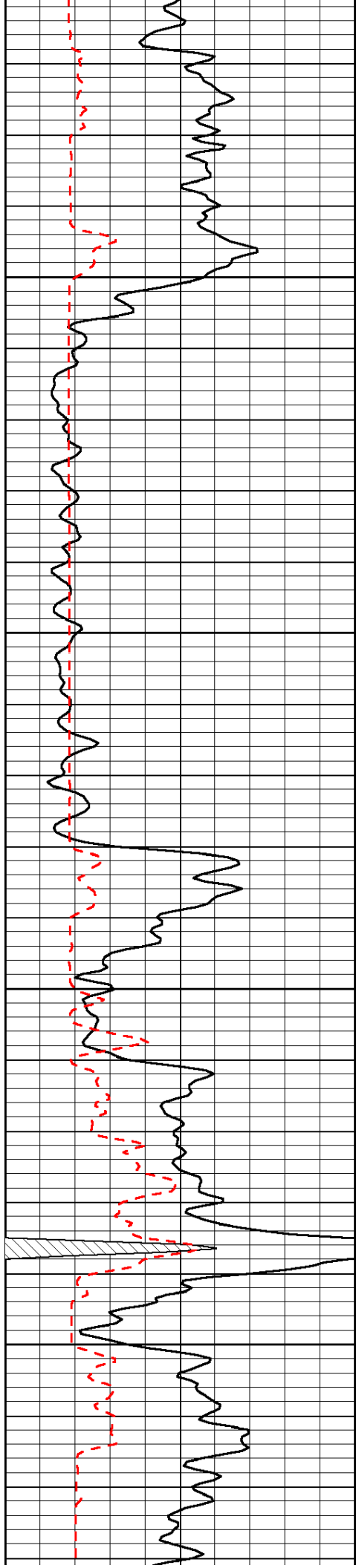


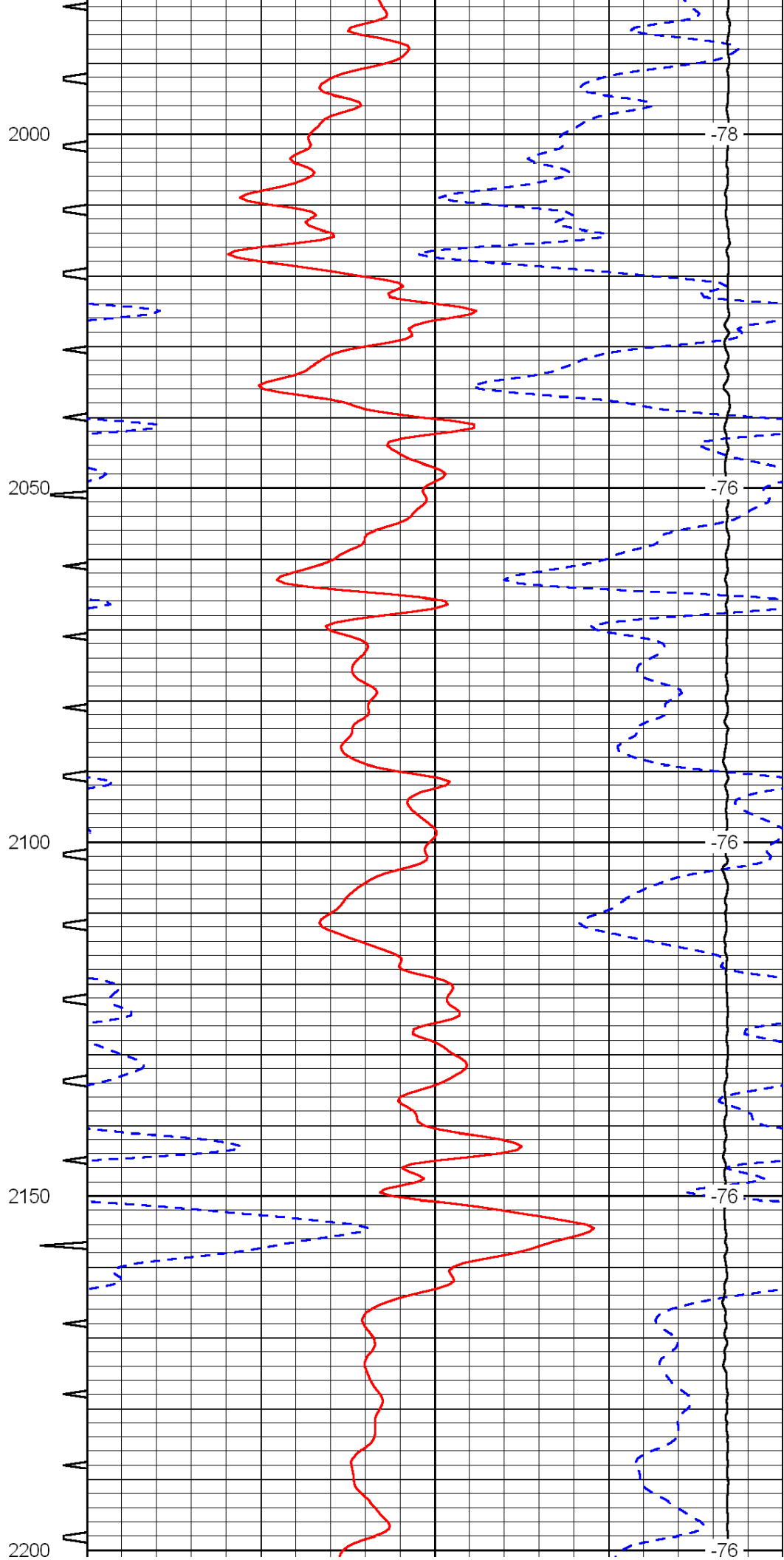
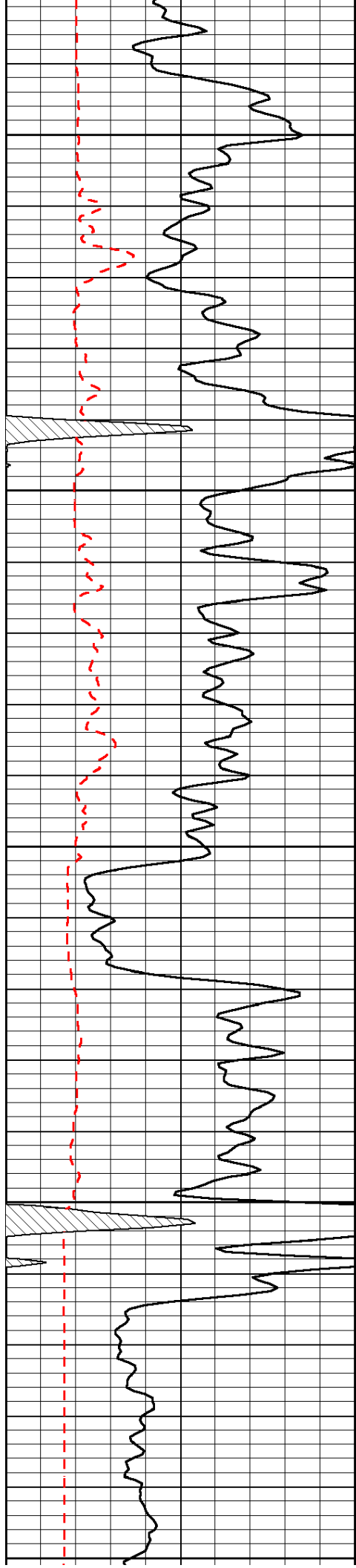


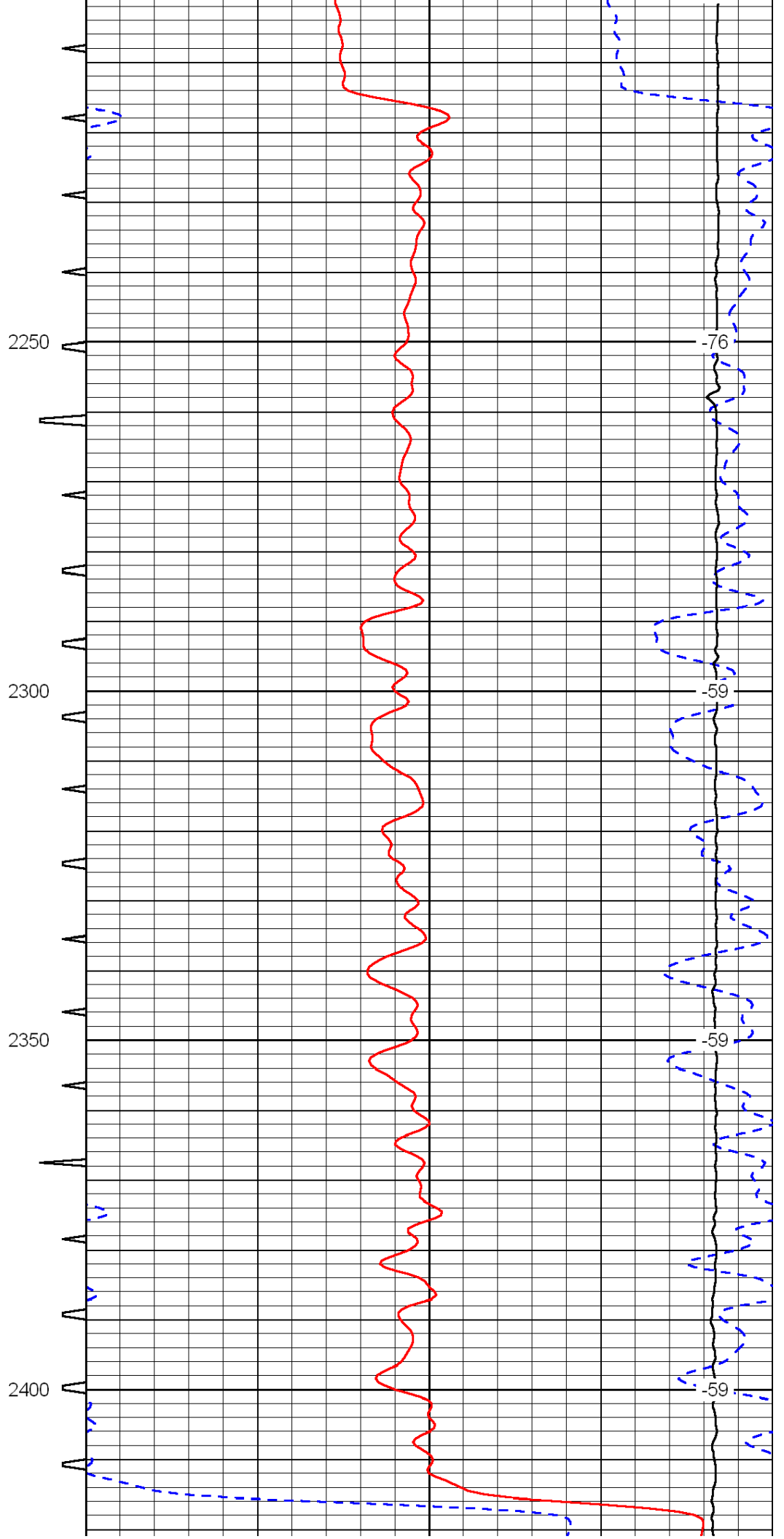
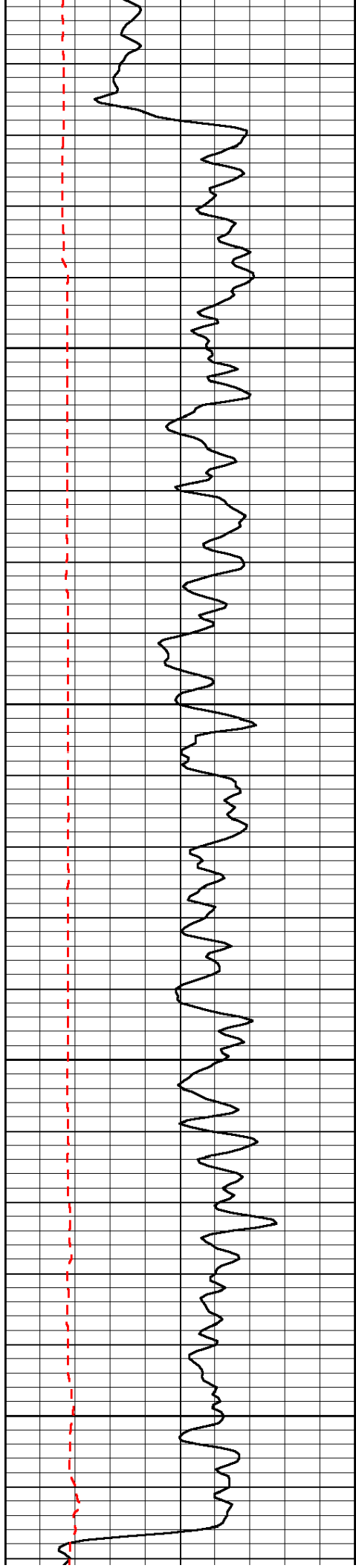


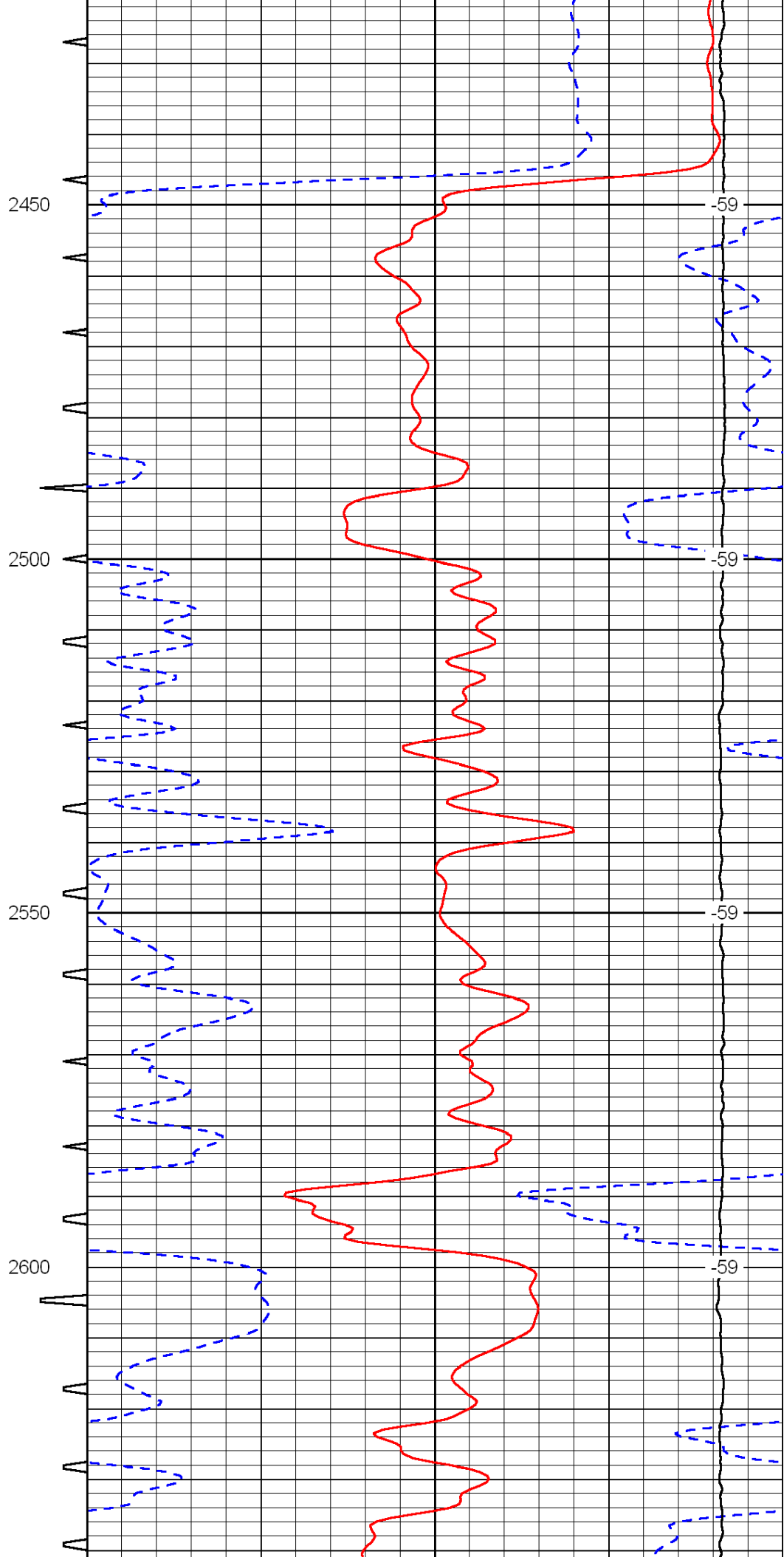
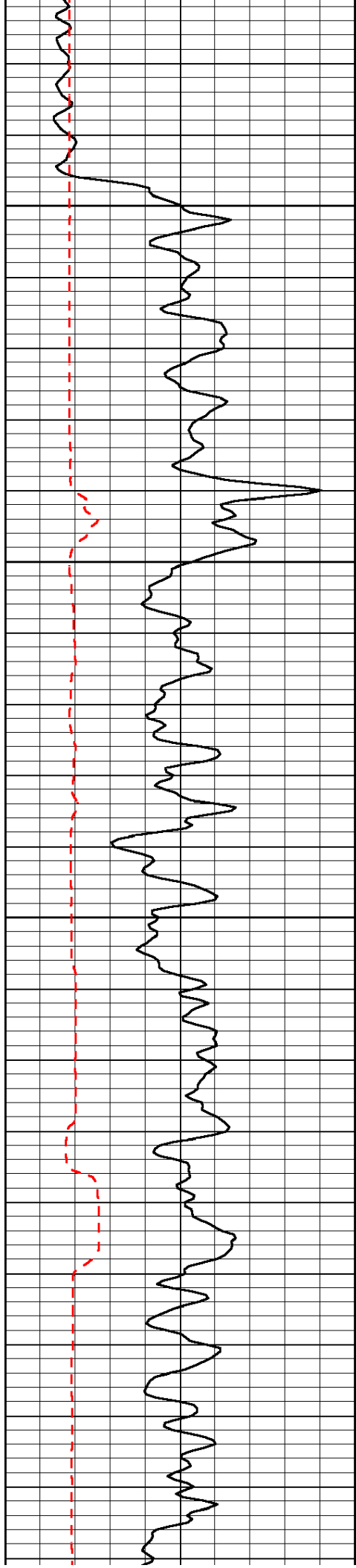


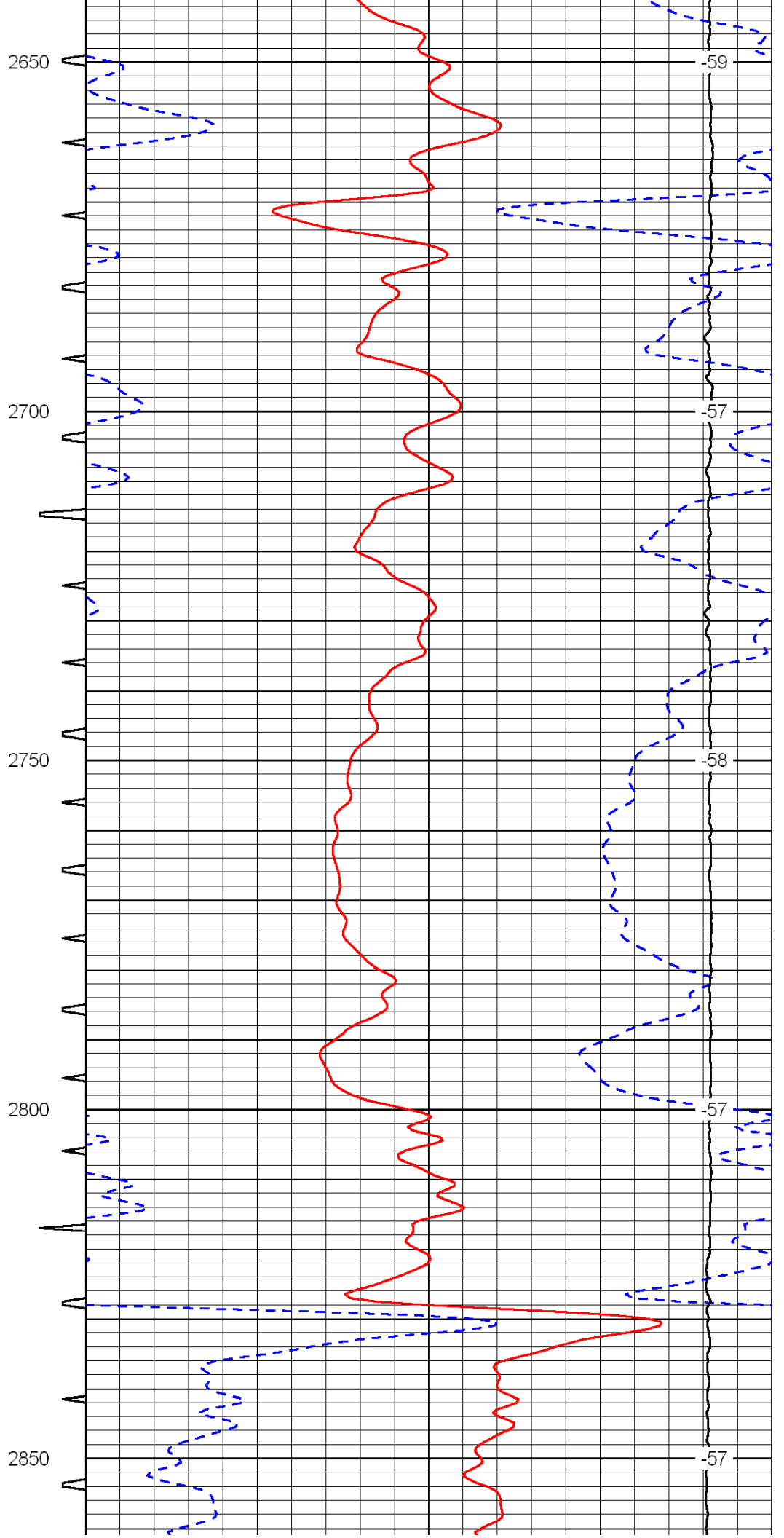
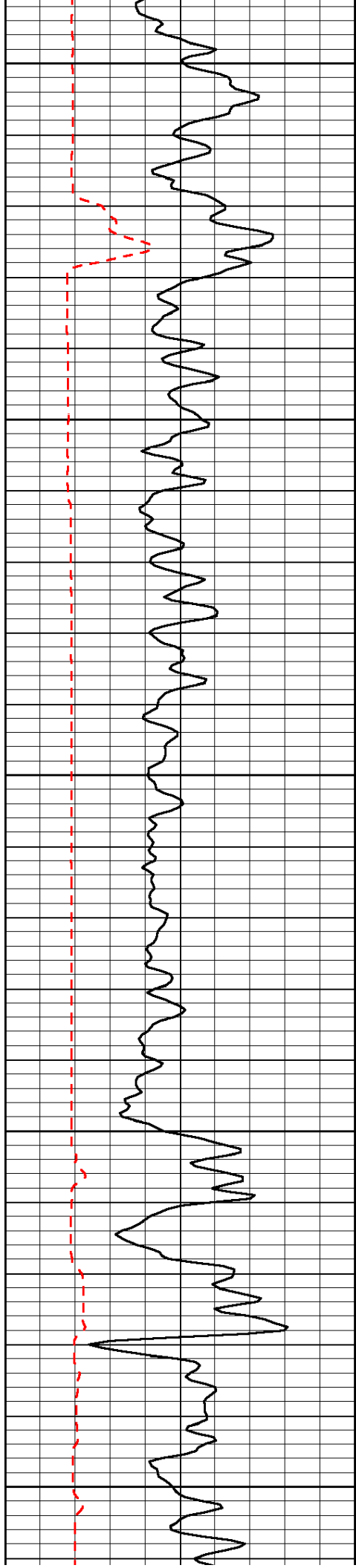


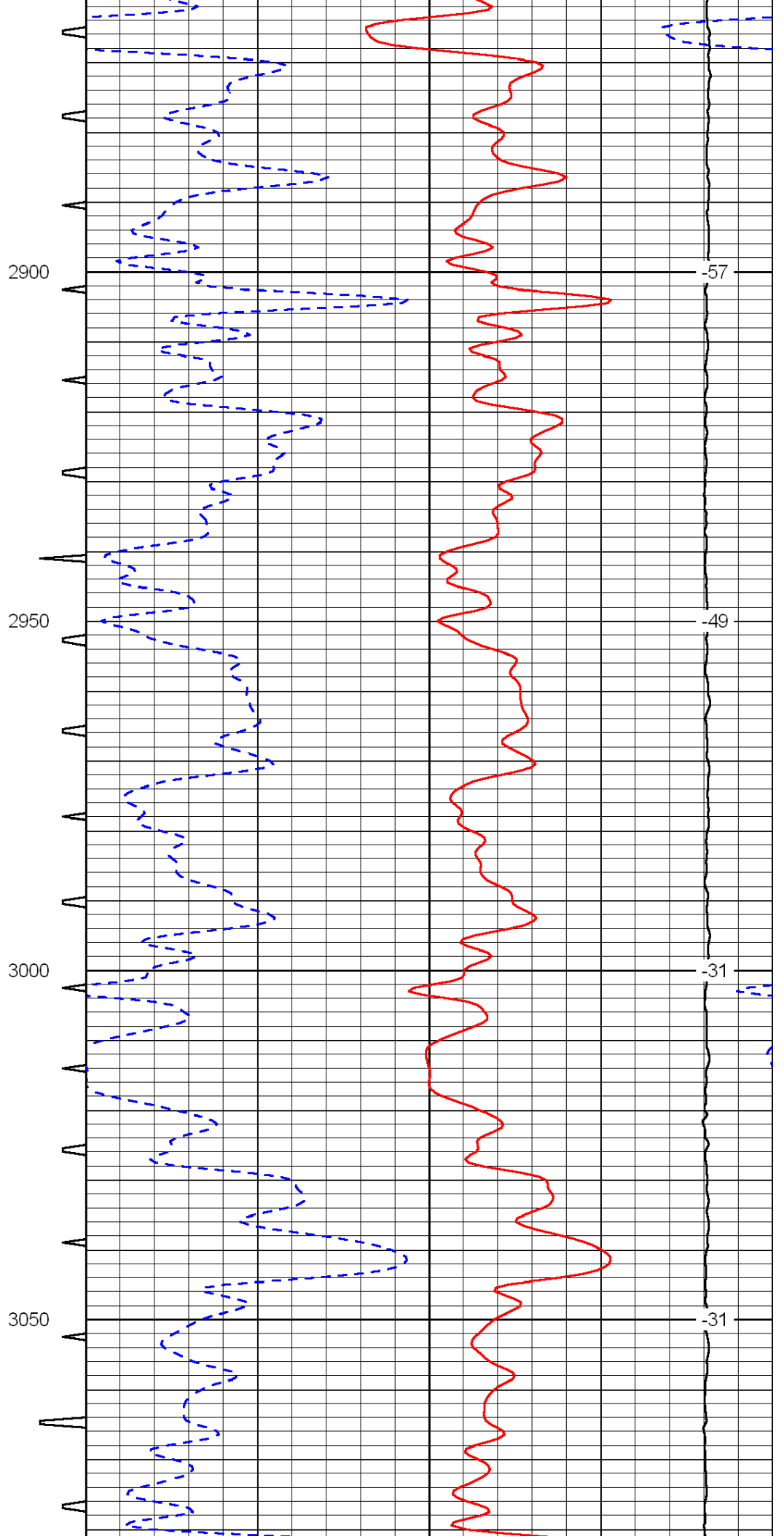
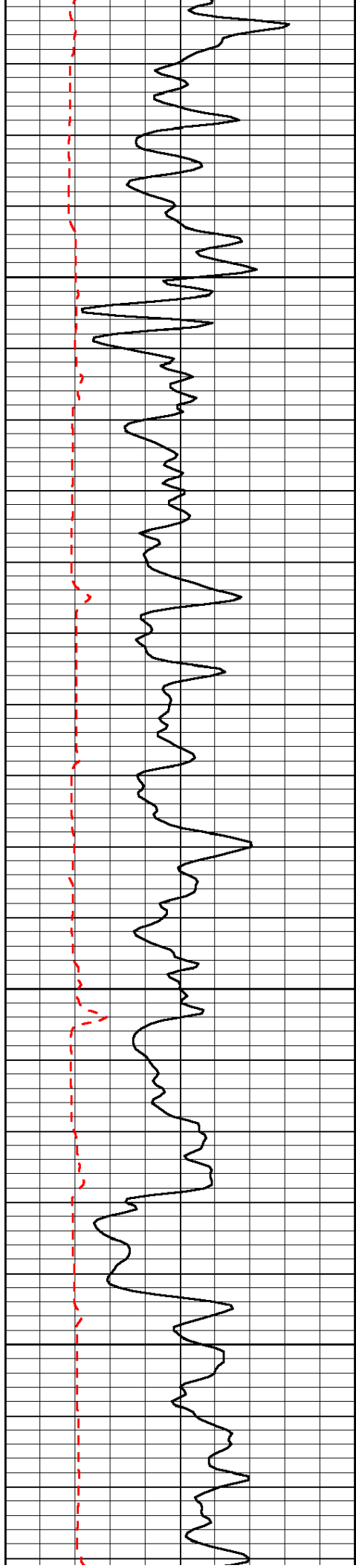


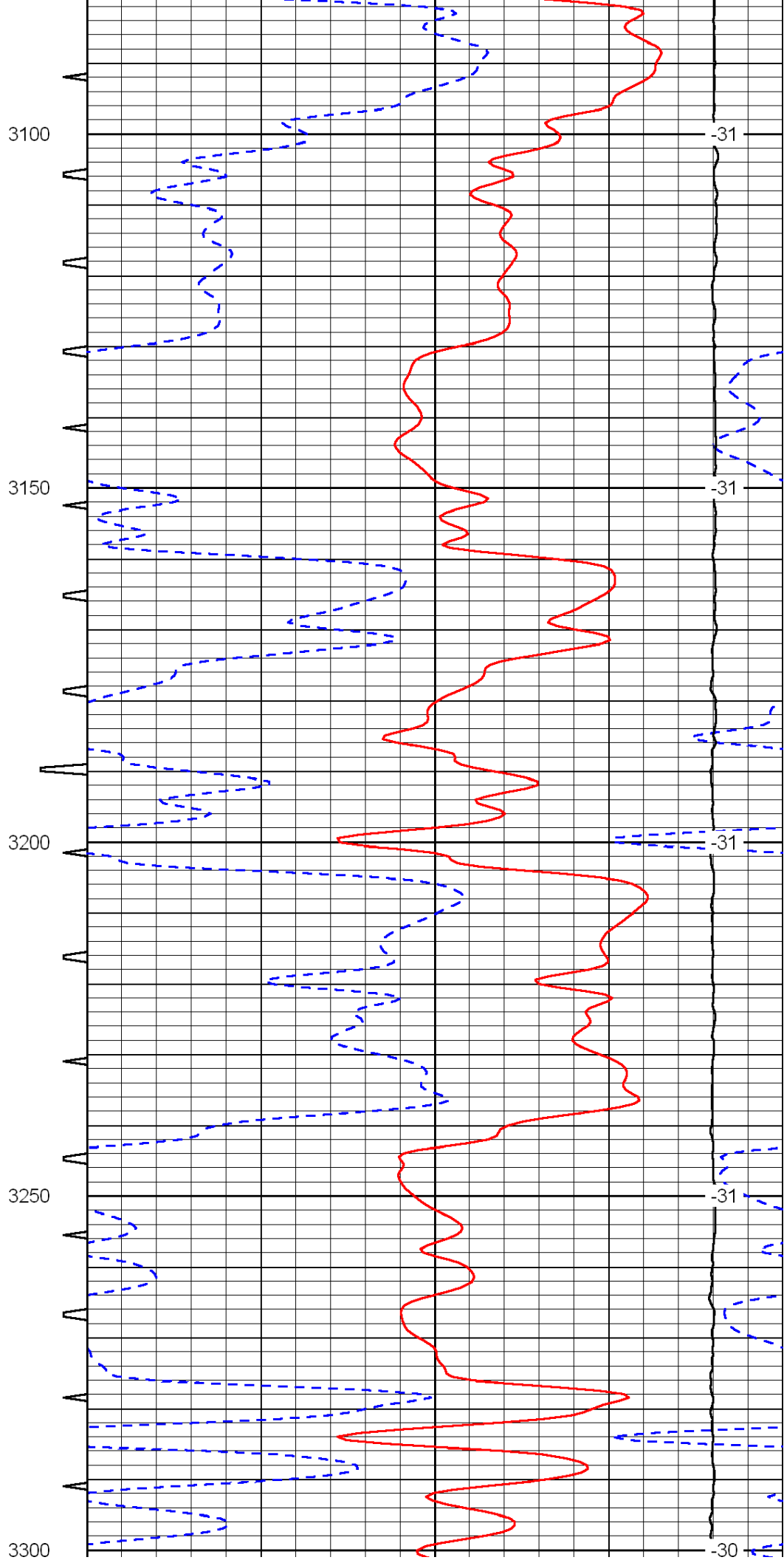
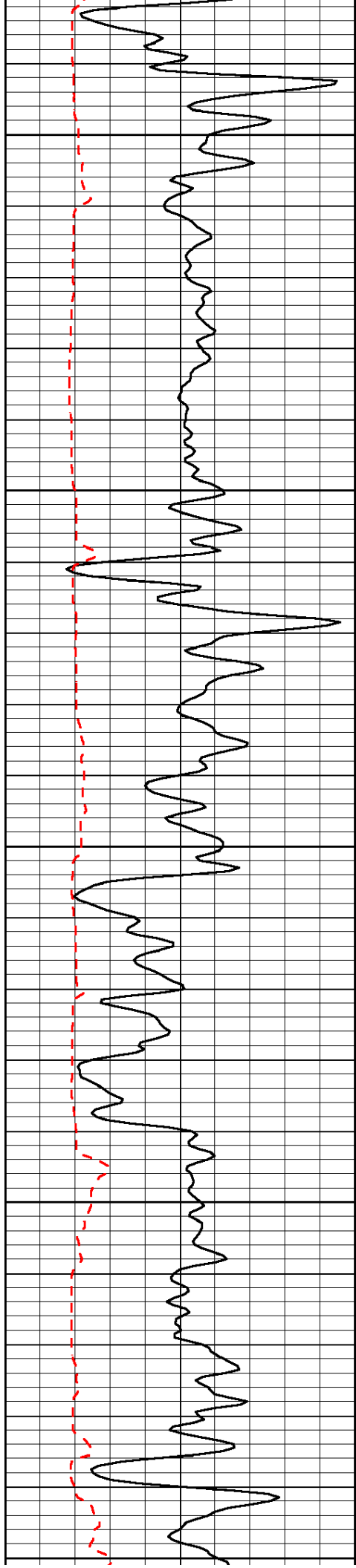


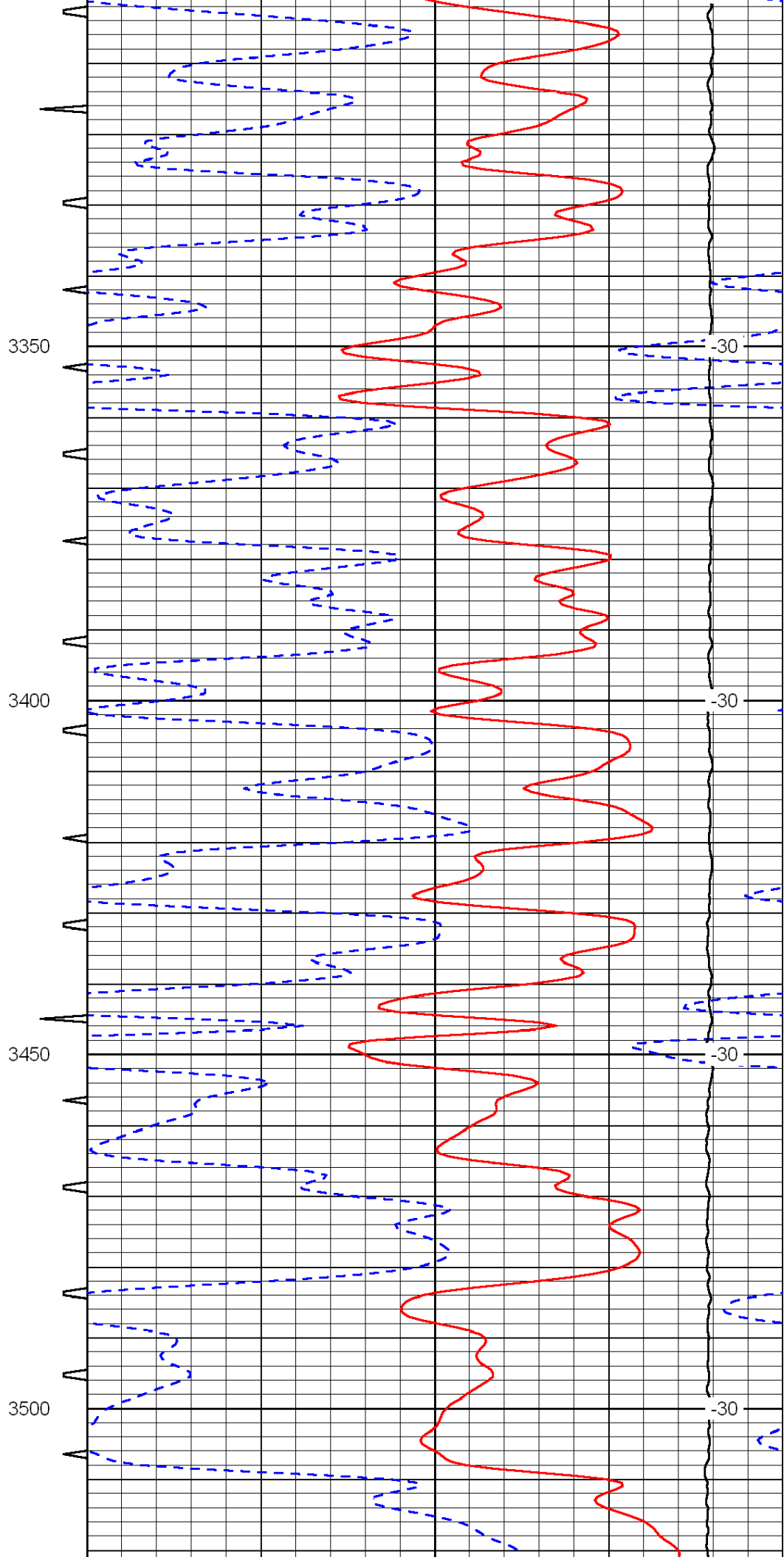
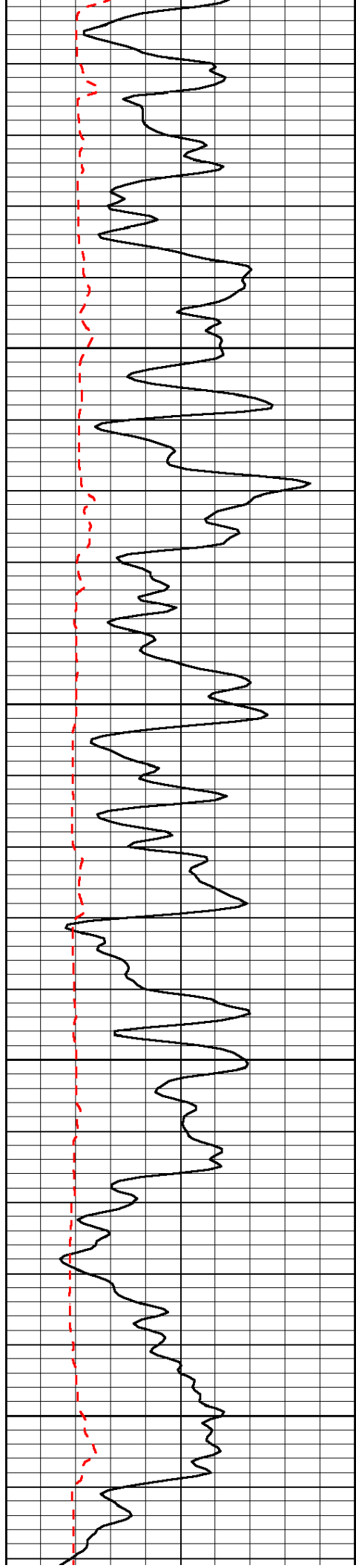


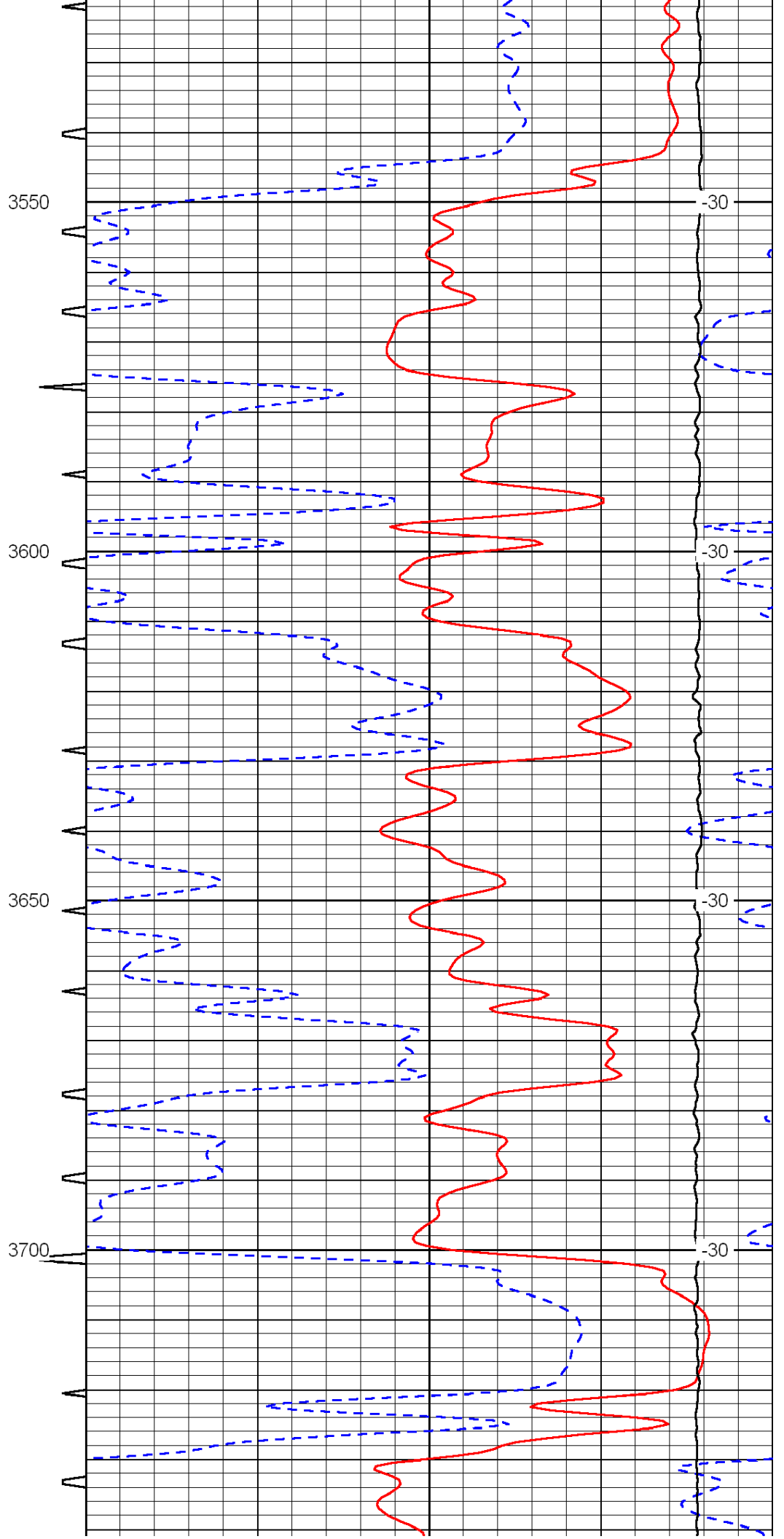
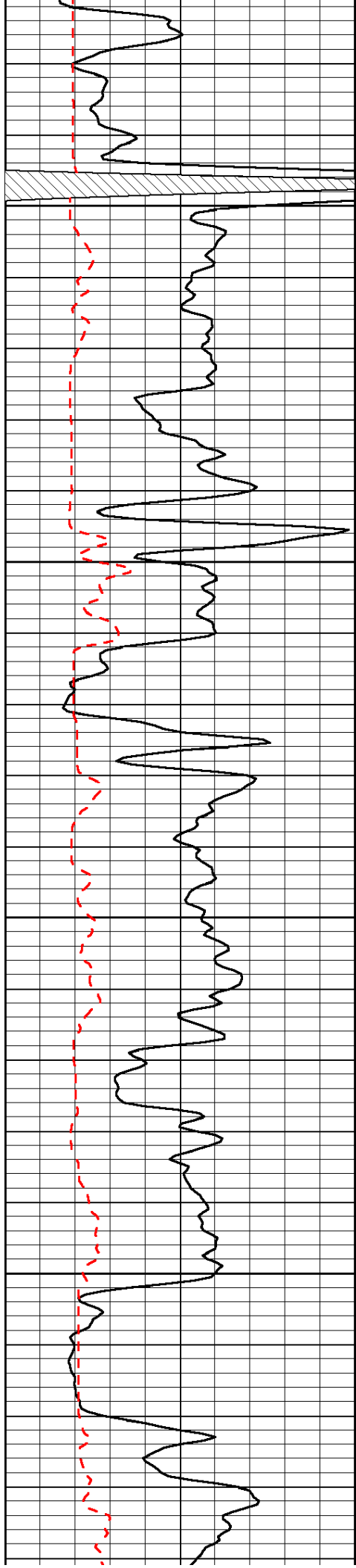


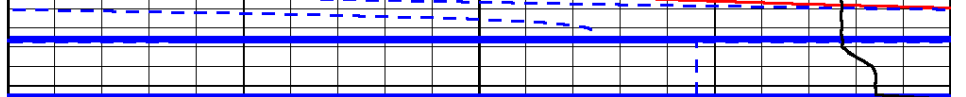
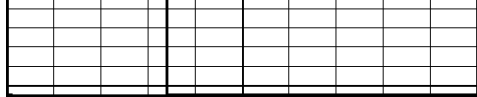












0	Gamma Ray	150	Sonic Int	140	Delta Time (usec/ft)	40
150	Gamma Ray	300	5	0	SPOR	-10
6	Caliper (GAPI)	16		15000	LTEN (lb)	0
						LSPD