

**MIDWEST SURVEYS**  
 LOGGING - PERFORATING - CONSULTING SERVICES  
 P.O. Box 66, Osawatomie, KS 66064  
 913 753-2728

**GAMMA RAY / NEUTRON / CCL**

File No: Company: **Dennis & Peggy Hodges**  
 Well: **Wilson** No. - **1**  
 Field: **Finnerty**  
 County: **Coffey** State: **Kansas**

Location: **1350 FNL & 170' FEL**  
 Sec. 11 Twp. 21S Rge. 13E  
 Permian Drums NE-NE-SENE  
 Log Measured From: **GL** Elev: **1144'**  
 Logging Interval From: **GL** Elev: **1144'**  
 Logging Interval To: **GL 1144'**

Date: **05-15-2013**  
 Run Number: **016**  
 Depth Logger: **1557.4**  
 Bottom Interval: **1898.4**  
 Total Depth: **2010**  
 Fluid Level: **Full**

Type Fluid: **Water**  
 Spindle / Viscosity: **NA**  
 Spindle - P/F/L: **NA**  
 Max. Recorded Temp: **NA**  
 Estimated Cement Top: **0.0**  
 Equipment No.: **107** Location: **Cassatahena**  
 Recorded By: **Steve Whitbeck**  
 Witnessed By: **Dennis Hodges**

BOREHOLE RECORD  
 RUN: **TO** **FROM** **SIZE** **WT** **FROM** **TO**  
 No: **12.25"** **1510** **8.625"** **28.0#** **0.0** **151.0**  
 Casing Record  
 No: **7.875"** **1510** **1824.0** **5.97"** **17.0#** **0.0** **1809.8**

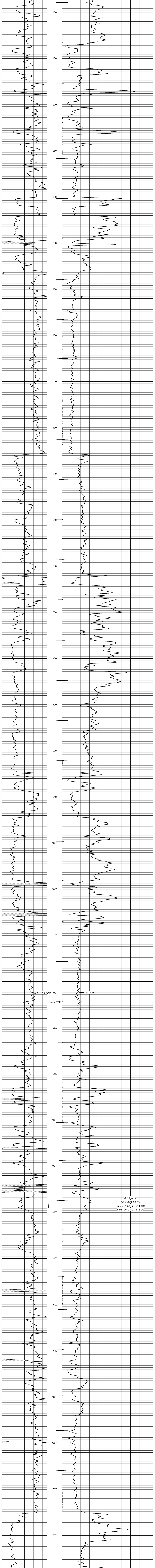
<<< Fold Here >>>

All interpretations are opinions based on inferences from electrical or other measurements and we cannot and do not guarantee the accuracy or correctness of any interpretation, and we shall not, except in the case of gross or willful negligence on our part, be liable or responsible for any loss, costs, damages, or expenses incurred or sustained by anyone resulting from any interpretation made by any of our officers, agents or employees. These interpretations are also subject to our general terms and conditions set out in our current Price Schedule.

Comments

Drilling Contractor :  
**Three Rivers Exploration, LLC**

Database File: wilson1.db  
 Dataset Pathname: pass1  
 Presentation Format: gr-h-ccl  
 Dataset Creation: Wed May 15 15:18:08 2013 by Log SCH 111116  
 Charted by: Depth in Feet scaled 1:240



05-15-2013  
 Perforated Interval  
 1390.0 - 1395.0 21 Perfs  
 3 3/8" DP 23 Gr T EOG