



SUPERIOR
Hays,
Kansas

COMPENSATED
DENSITY / NEUTRON
PE LOG

Company LOTUS OPERATING CO. LLC.
Well #2 MOLZ "L"
Field STANATHAN
County BARBER
State KANSAS

Company LOTUS OPERATING COMPANY, LLC.
Well #2 MOLZ "L"
Field STANATHAN
County BARBER State KANSAS

Location: API # : 15-007-23691-0000
660' FSL & 330' FEL
SEC 1 TWP 35S RGE 12W
Permanent Datum GROUND LEVEL Elevation 1399
Log Measured From KELLY BUSHING 13' A.G.L.
Drilling Measured From KELLY BUSHING
Other Services
DIL/MEL
SONIIC
Elevation
K.B. 1412
D.F. 1410
G.L. 1399

Date	5/11/11		
Run Number	ONE		
Depth Driller	5567		
Depth Logger	5568		
Bottom Logged Interval	5544		
Top Log Interval	3700		
Casing Driller	10 3/4" @ 255'		
Casing Logger	255		
Bit Size	7 7/8"		
Type Fluid in Hole	CHEMICAL MUD	CHLORIDES 3,000 PPM	
Density / Viscosity	9.3/43		
pH / Fluid Loss	9.0/10.0		
Source of Sample	FLOWLINE		
Rim @ Meas. Temp	.650 @ 75F		
Rmf @ Meas. Temp	.488 @ 75F		
Rmc @ Meas. Temp	.780 @ 75F		
Source of Rmf / Rmc	MEASUREMENT		
Rim @ BHT	.375 @ 130F		
Time Circulation Stopped	3 HOURS		
Time Logger on Bottom	9:15 A.M.		
Maximum Recorded Temperature	130F		
Equipment Number	0836		
Location	HAYS, KANSAS		
Recorded By	JEFF LUEBBERS		
Witnessed By	TIM HELLMAN		

<<< Fold Here >>>

All interpretations are opinions based on inferences from electrical or other measurements and we cannot and do not guarantee the accuracy or correctness of any interpretation, and we shall not, except in the case of gross or willful negligence on our part, be liable or responsible for any loss, costs, damages, or expenses incurred or sustained by anyone resulting from any interpretation made by any of our officers, agents or employees. These interpretations are also subject to our general terms and conditions set out in our current Price Schedule.

Comments

THANK YOU FOR USING SUPERIOR WELL SERVICE HAYS, KANSAS (785) 628-6395
DIRECTIONS
MEDICINE LODGE, KS. (JUNCTION OF HWY 160 & 281) 17 1/2 S. ON HWY 281 W. INTO BEFORE HWY 2

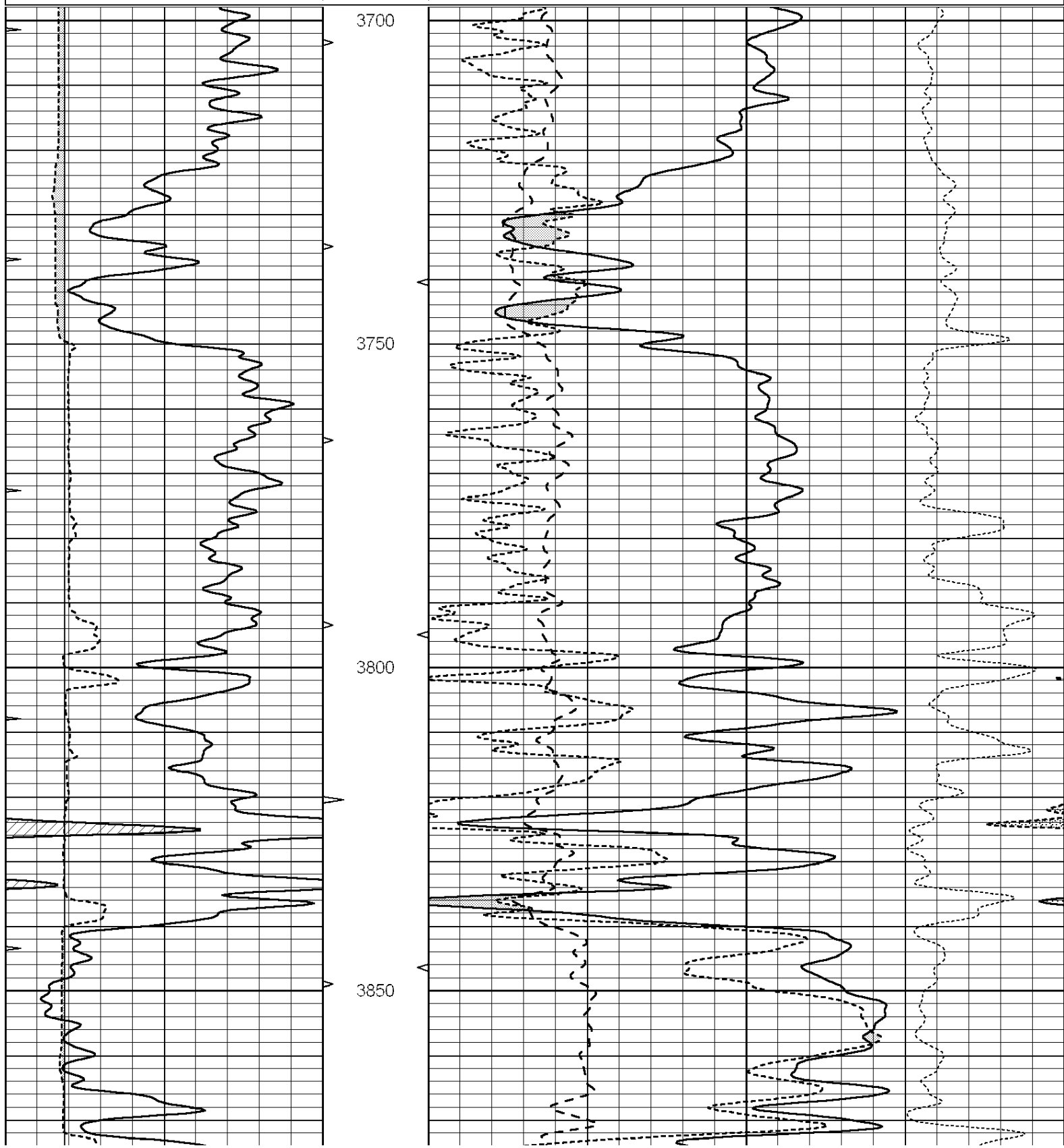


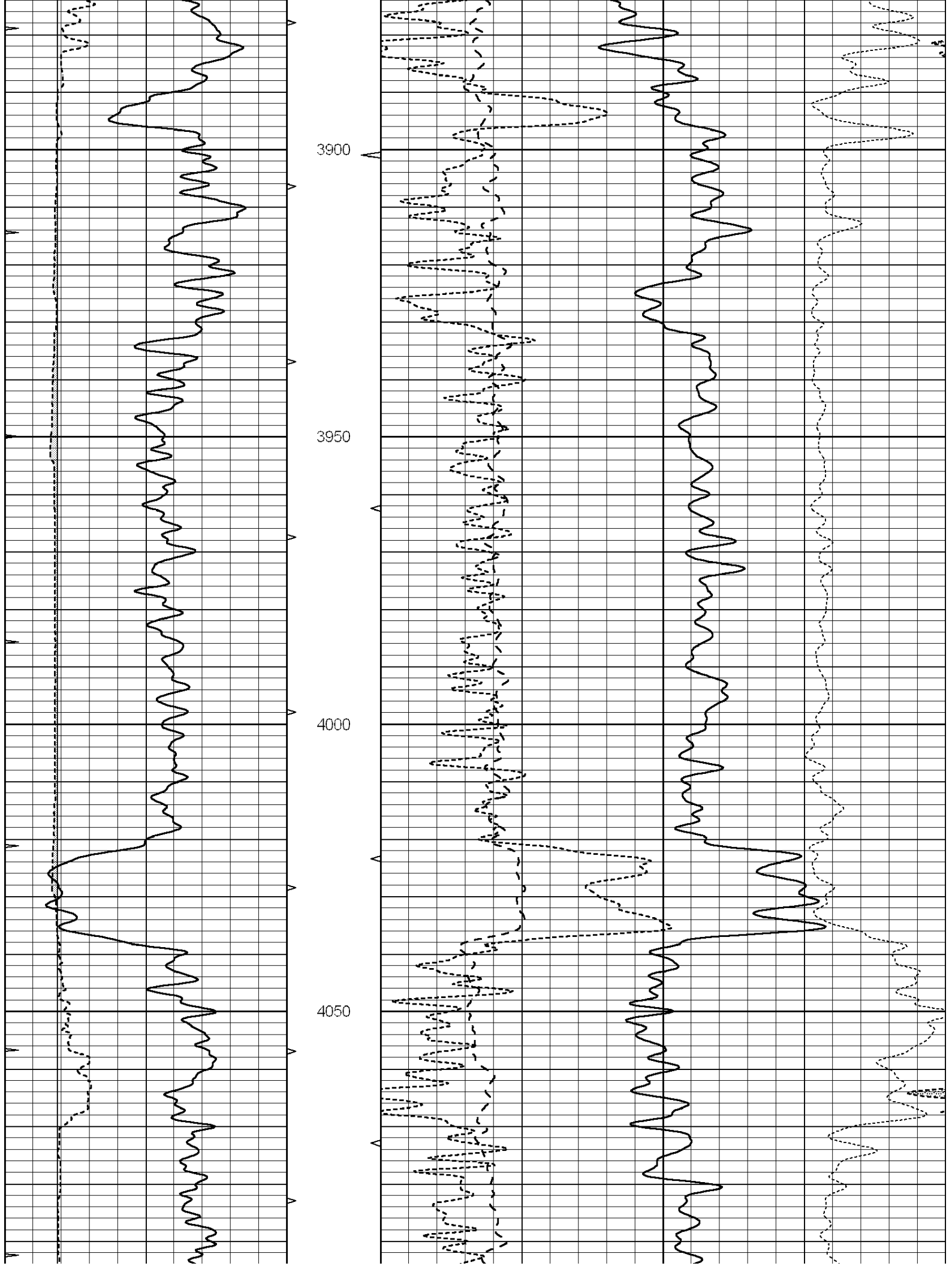
SUPERIOR
Hays,
Kansas

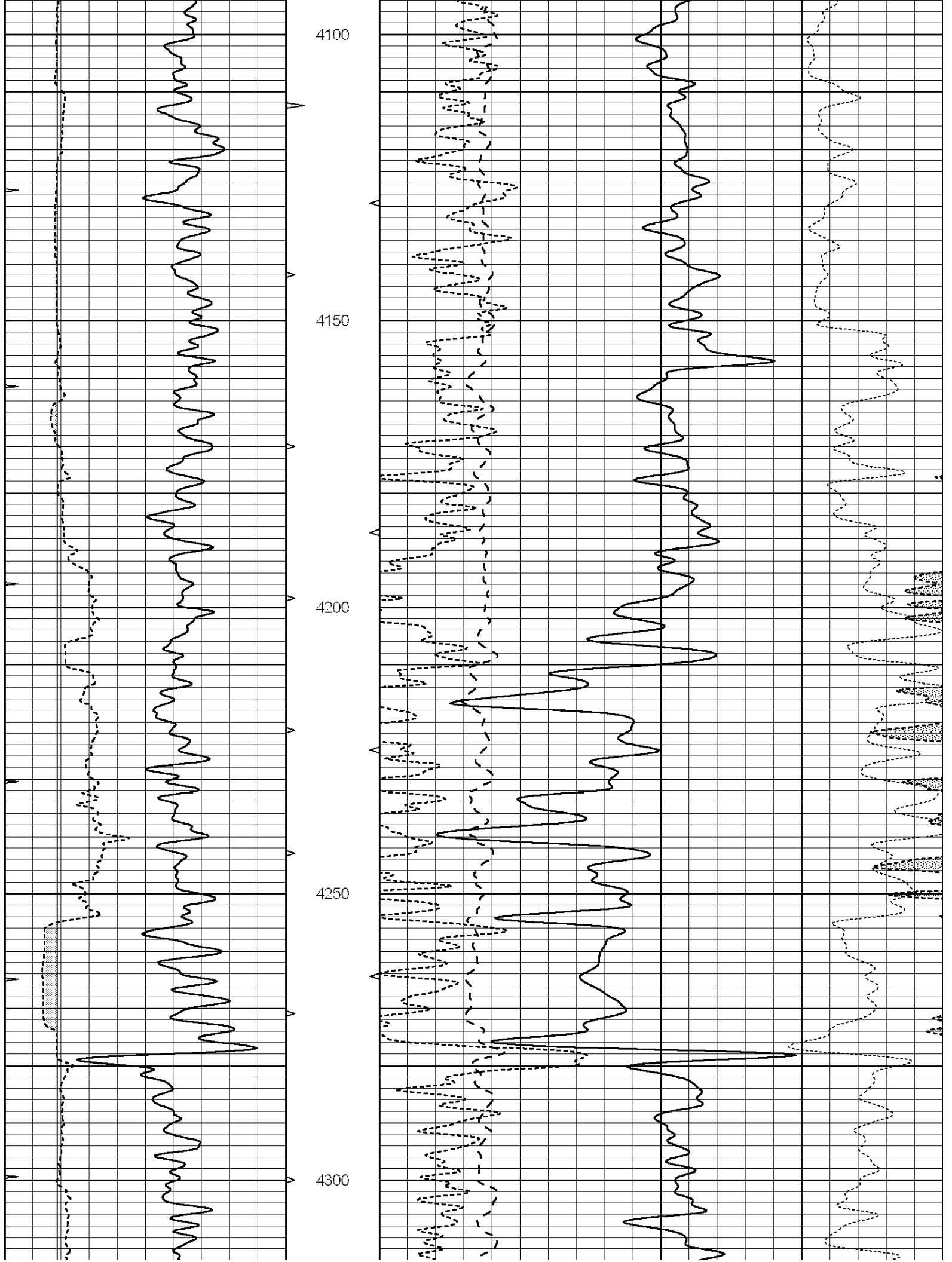
MAIN SECTION

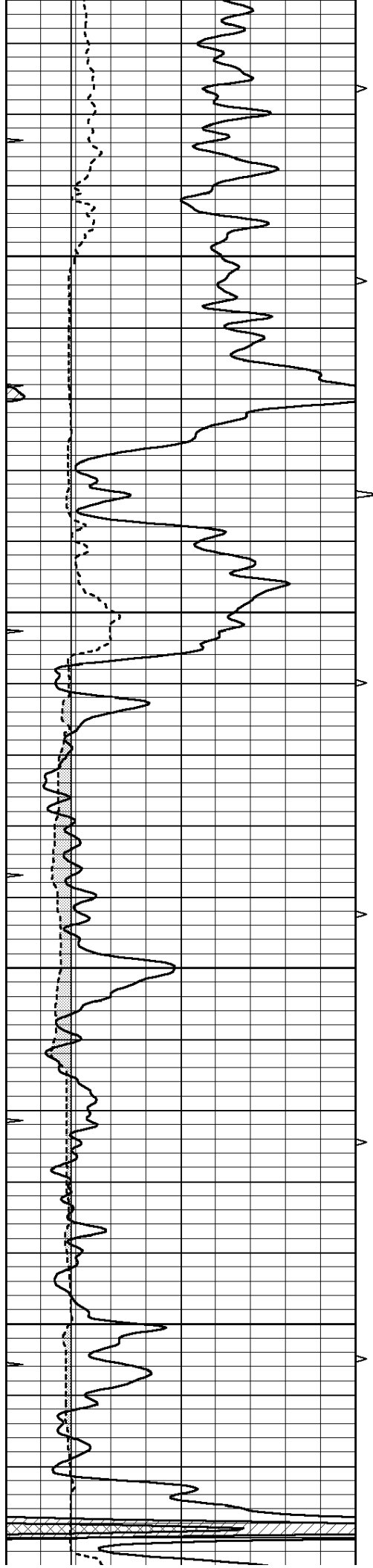
Database File: 006825pe.db
 Dataset Pathname: pass4.3
 Presentation Format: ldt_neu
 Dataset Creation: Wed May 11 10:51:50 2011 by Calc Open-Cased 090629
 Charted by: Depth in Feet scaled 1:240

0	GAMMA RAY (GAPI)	150	ABHV	30	COMPENSATED DENSITY (pu)		-10
6	CALIPER (in)	16	10 (ft3)	0	COMPENSATED NEUTRON (pu)		-10
0	MINMK	20	TBHV	0	PE	10	-0.25 CORRECTION (g/cc) 0.25
			0 (ft3)	10			







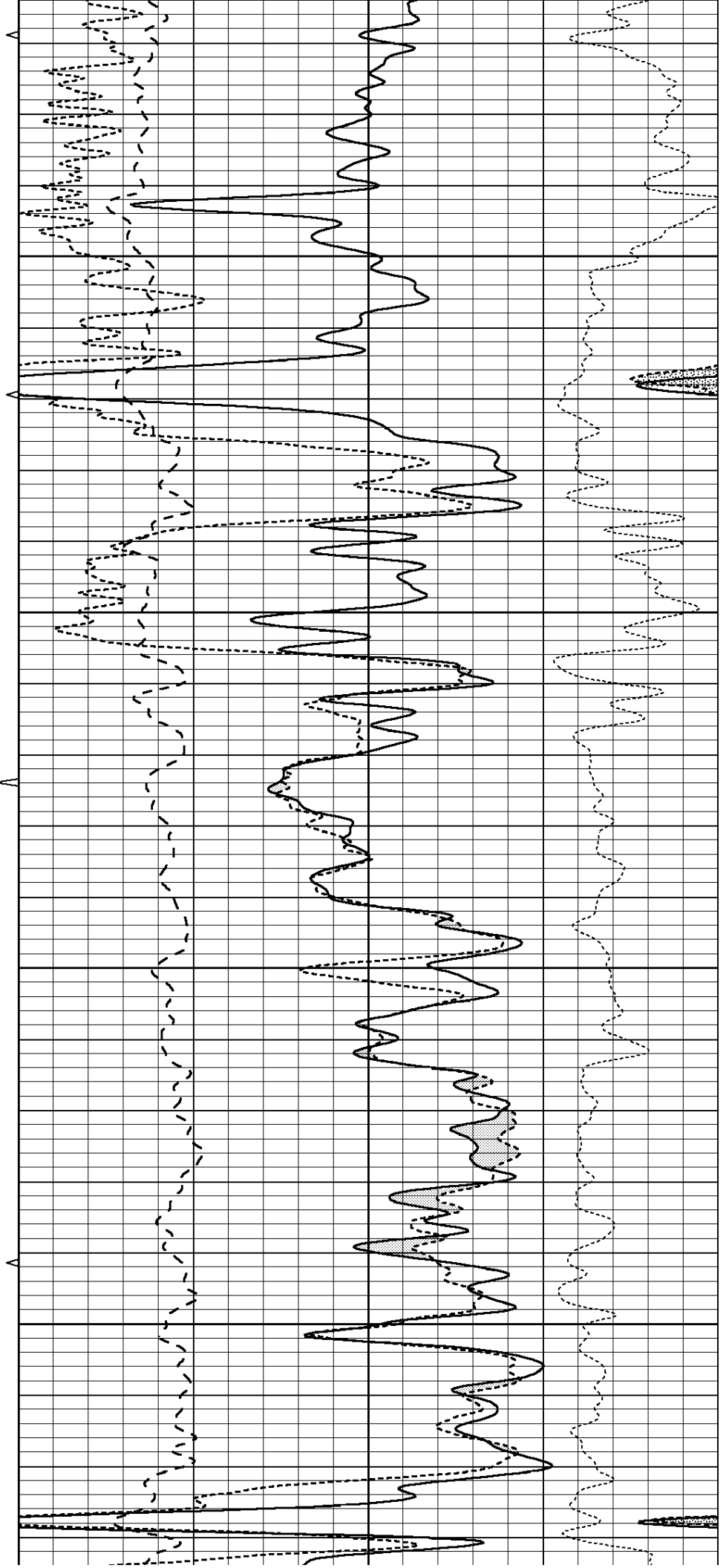


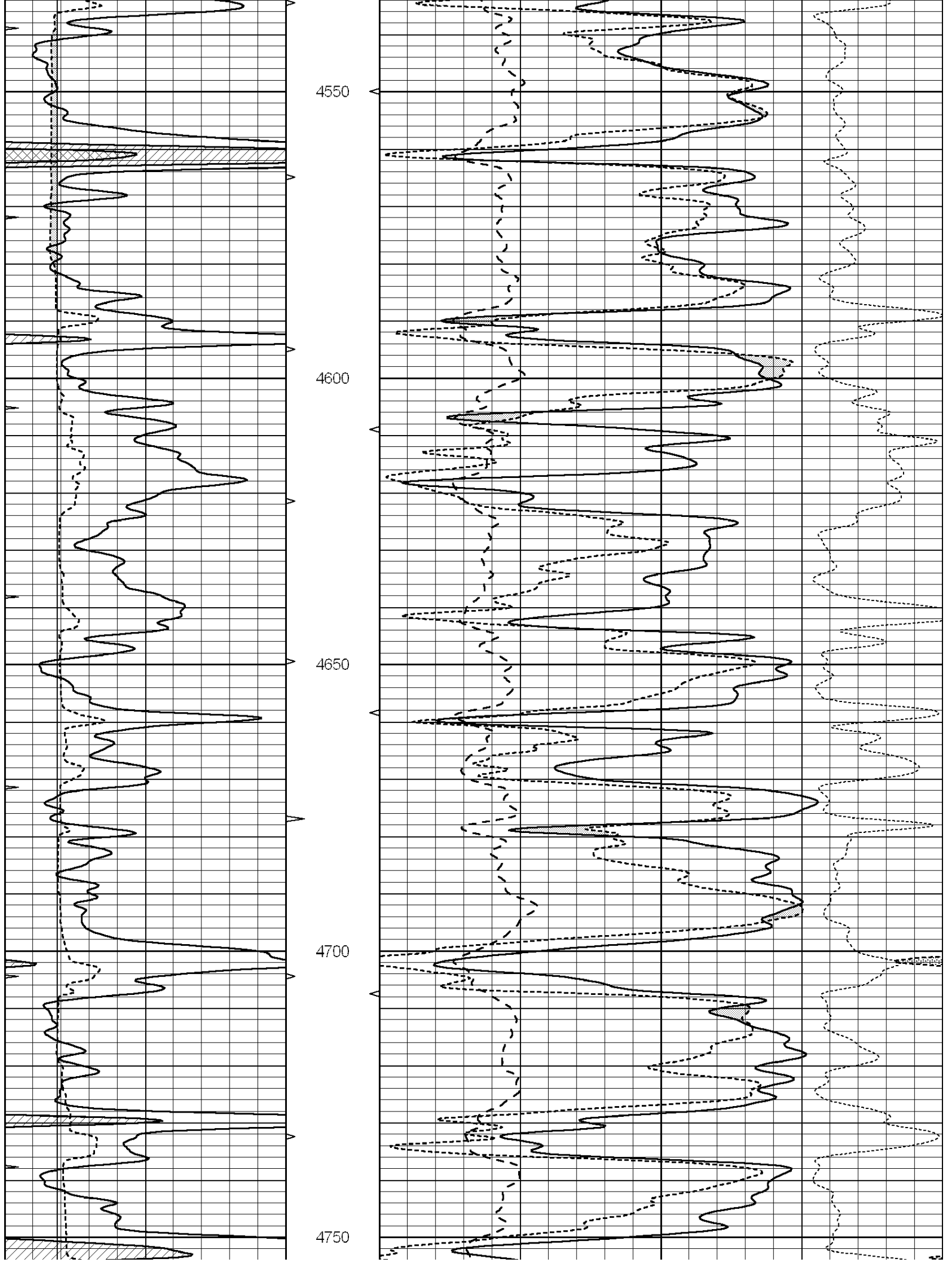
4350

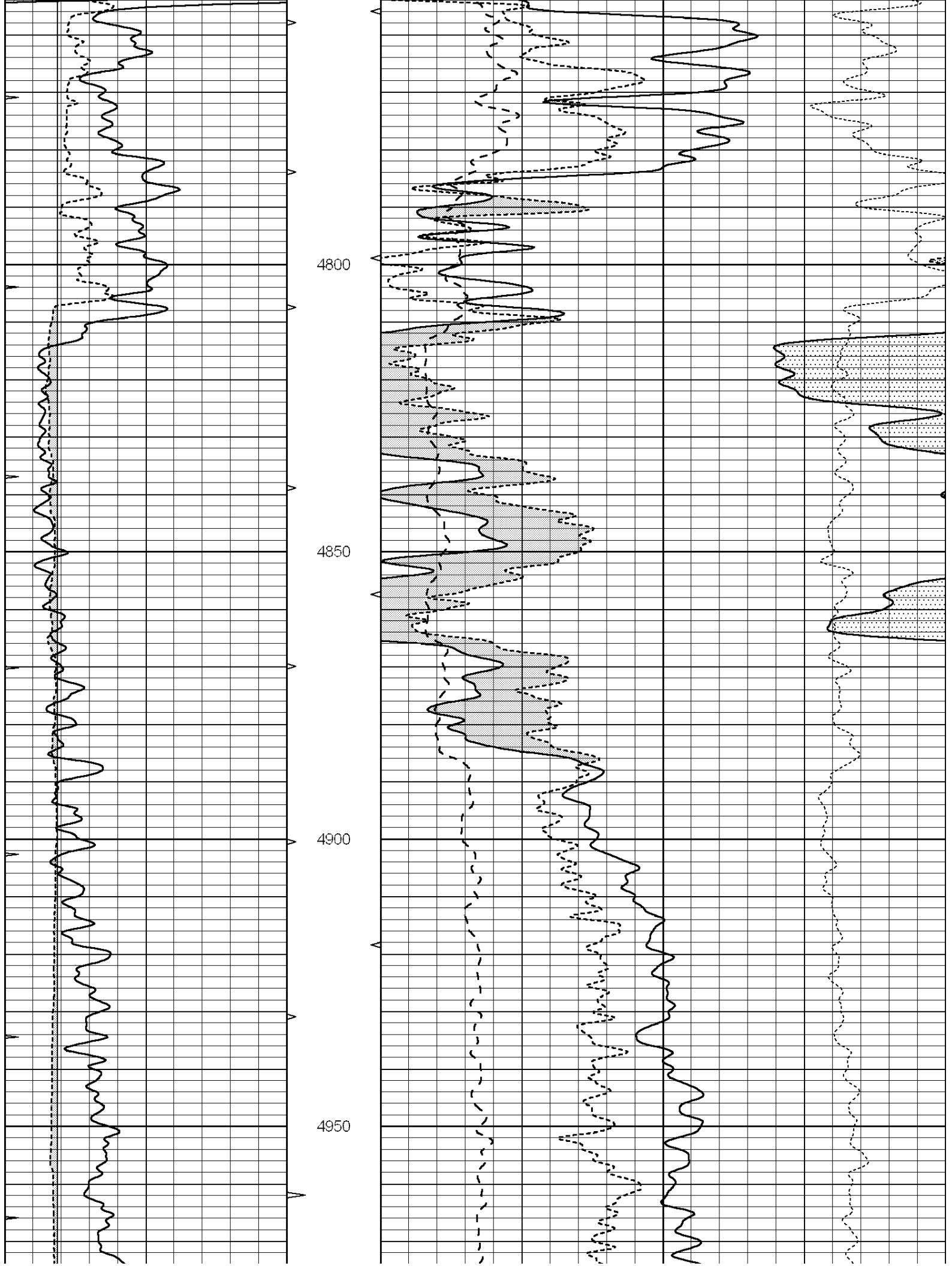
4400

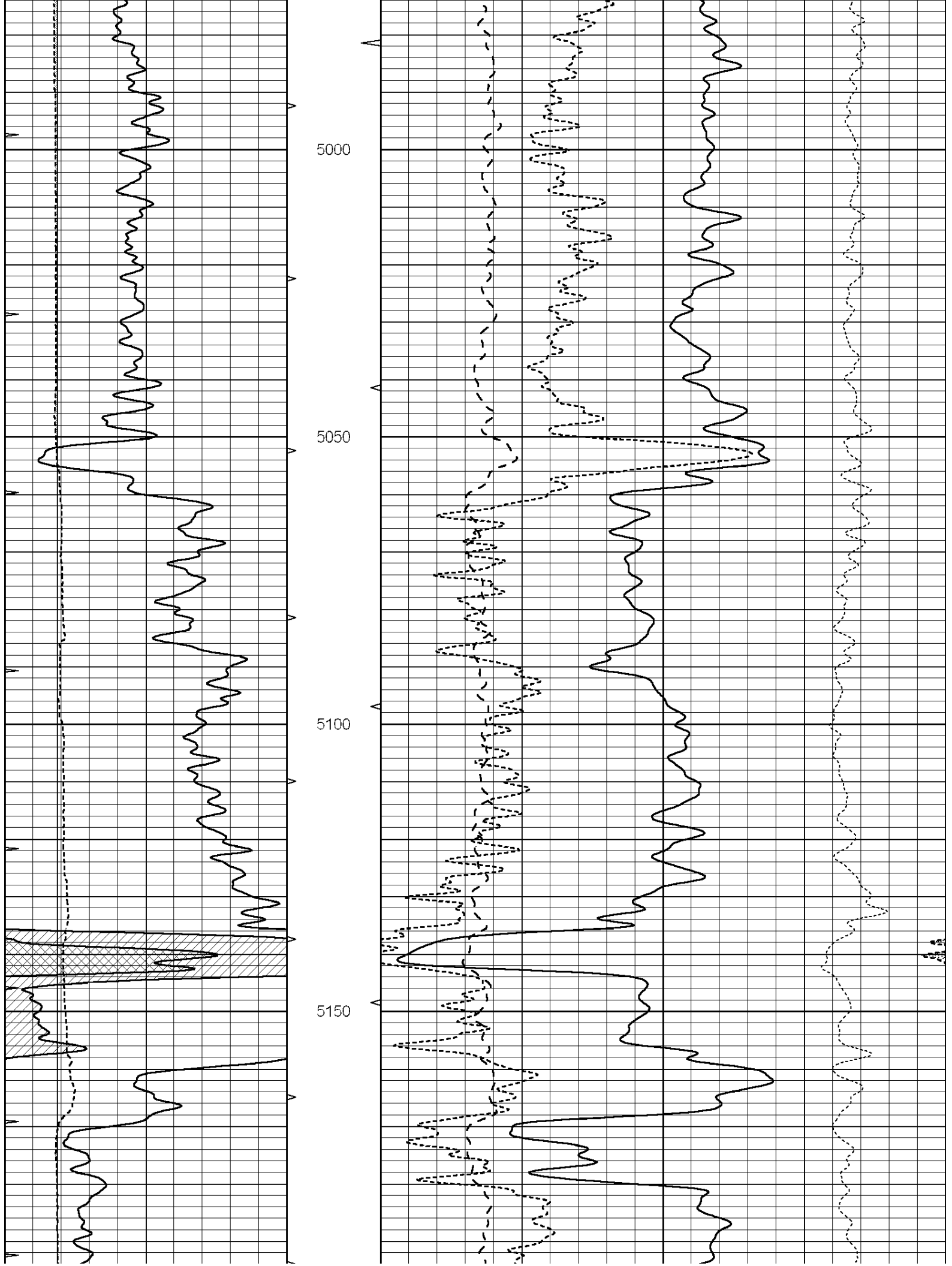
4450

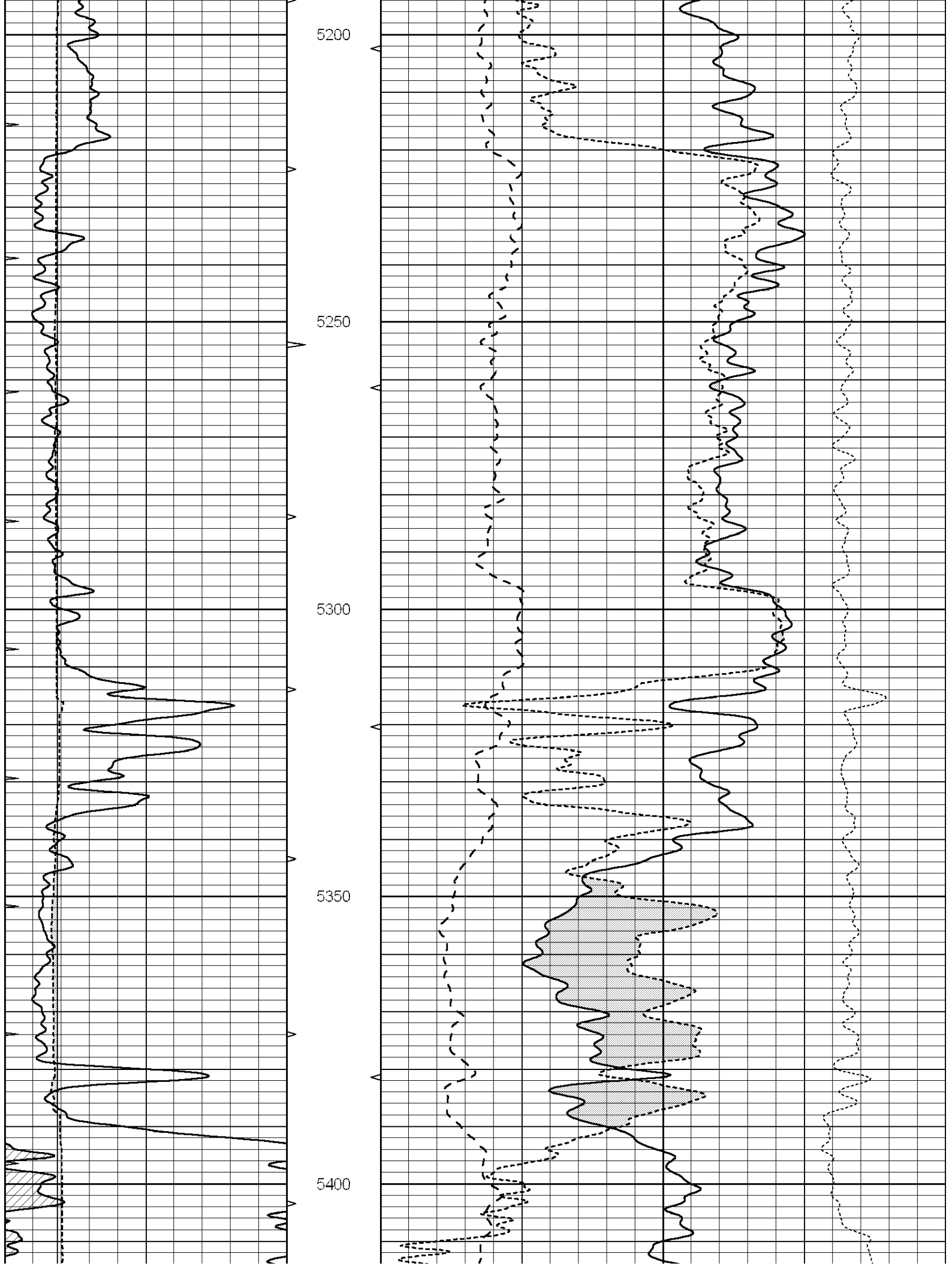
4500

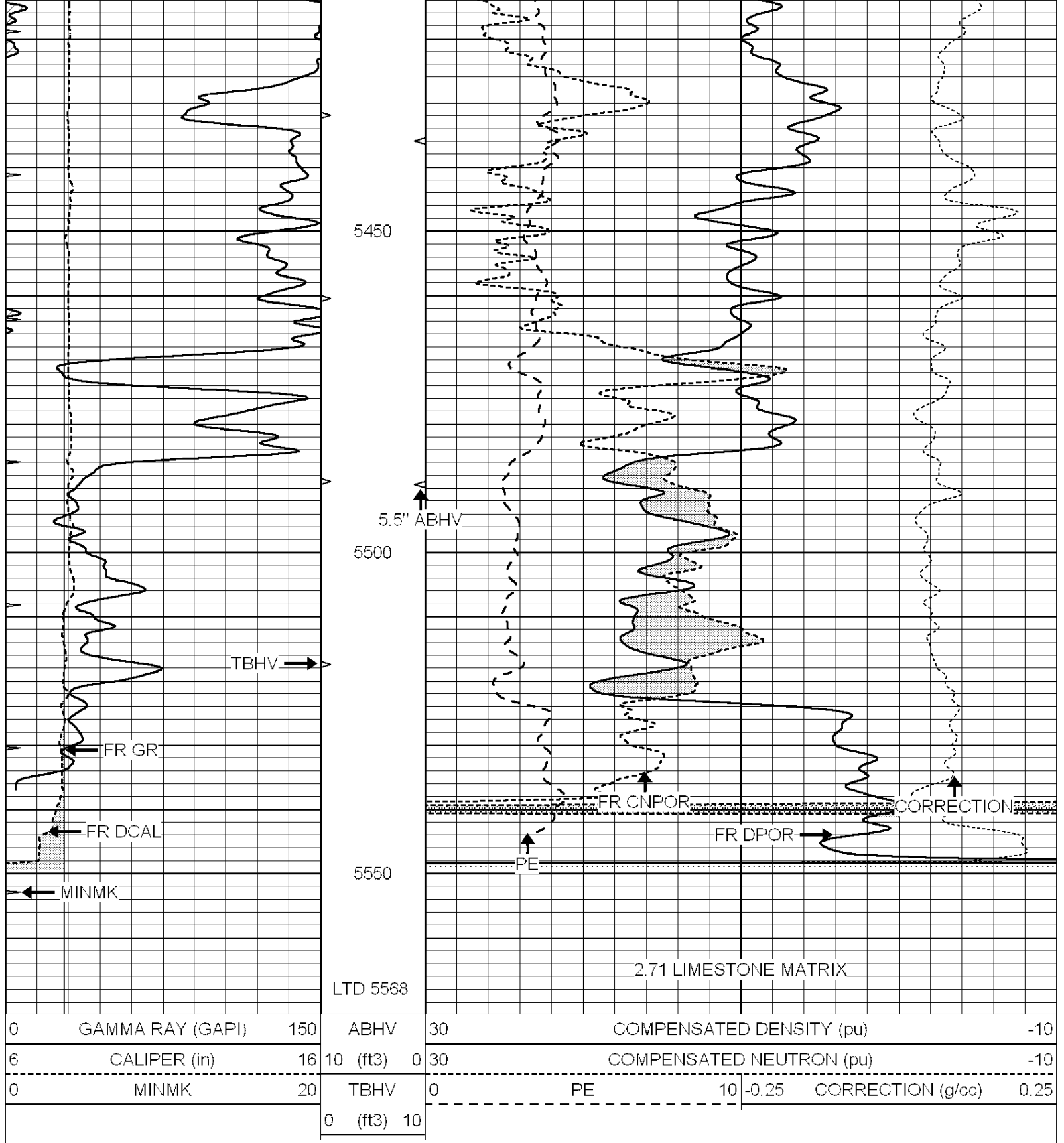










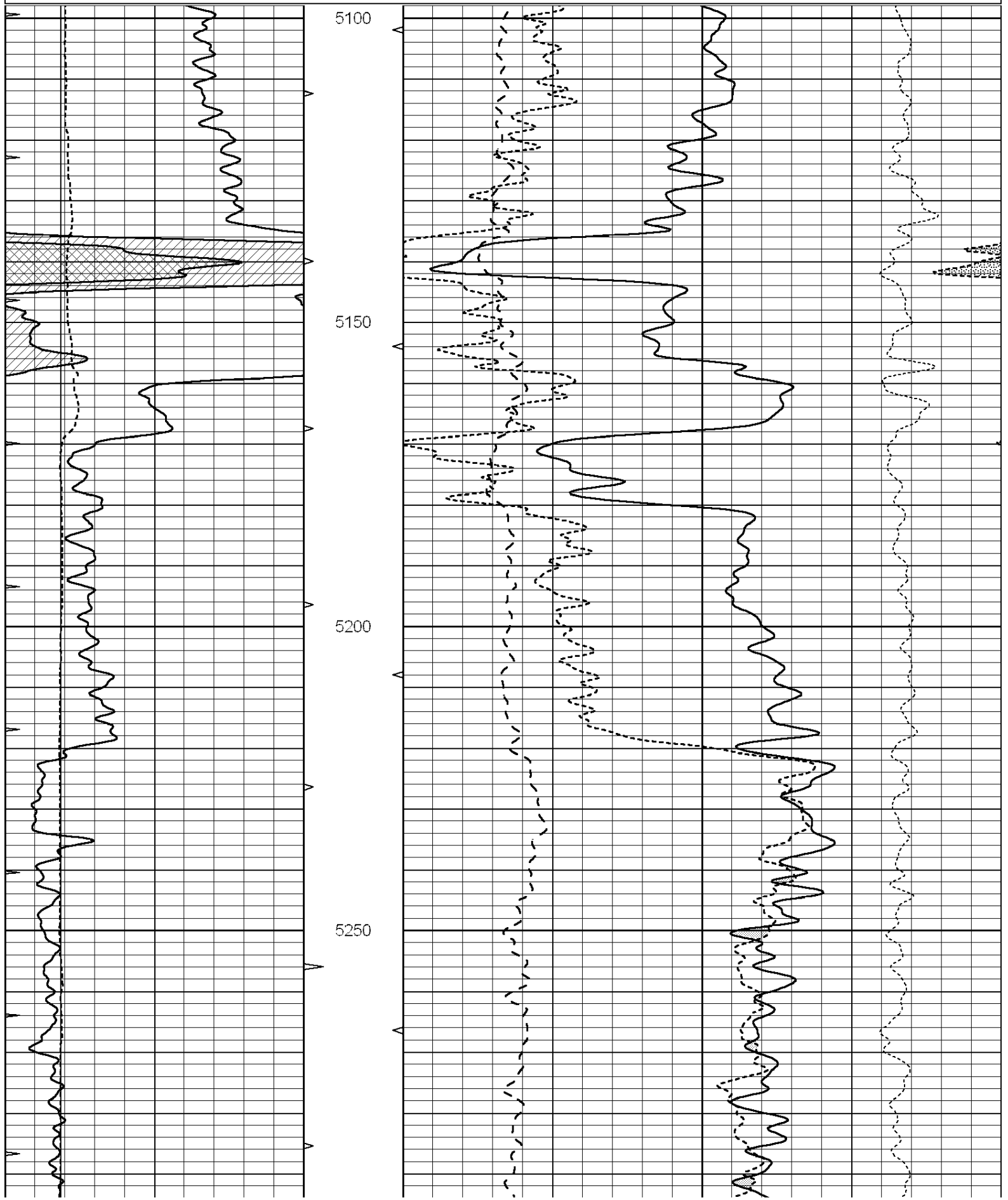


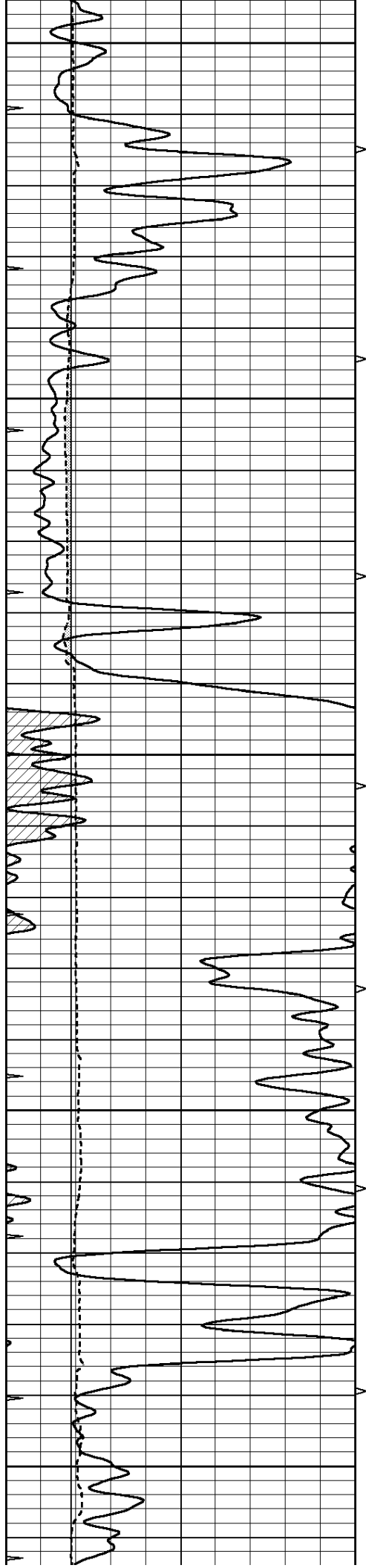
SUPERIOR
Hays,
Kansas

REPEAT SECTION

Database File: 006825pe.db
 Dataset Pathname: pass3.6
 Presentation Format: ldt_neu
 Dataset Creation: Wed May 11 10:52:59 2011 by Calc Open-Cased 090629
 Charted by: Depth in Feet scaled 1:240

0	GAMMA RAY (GAPI)	150	ABHV	30	COMPENSATED DENSITY (pu)	-10
6	CALIPER (in)	16	10 (ft3)	0 30	COMPENSATED NEUTRON (pu)	-10
0	MINMK	20	TBHV	0	PE	10 -0.25 CORRECTION (g/cc) 0.25
			0 (ft3)	10		





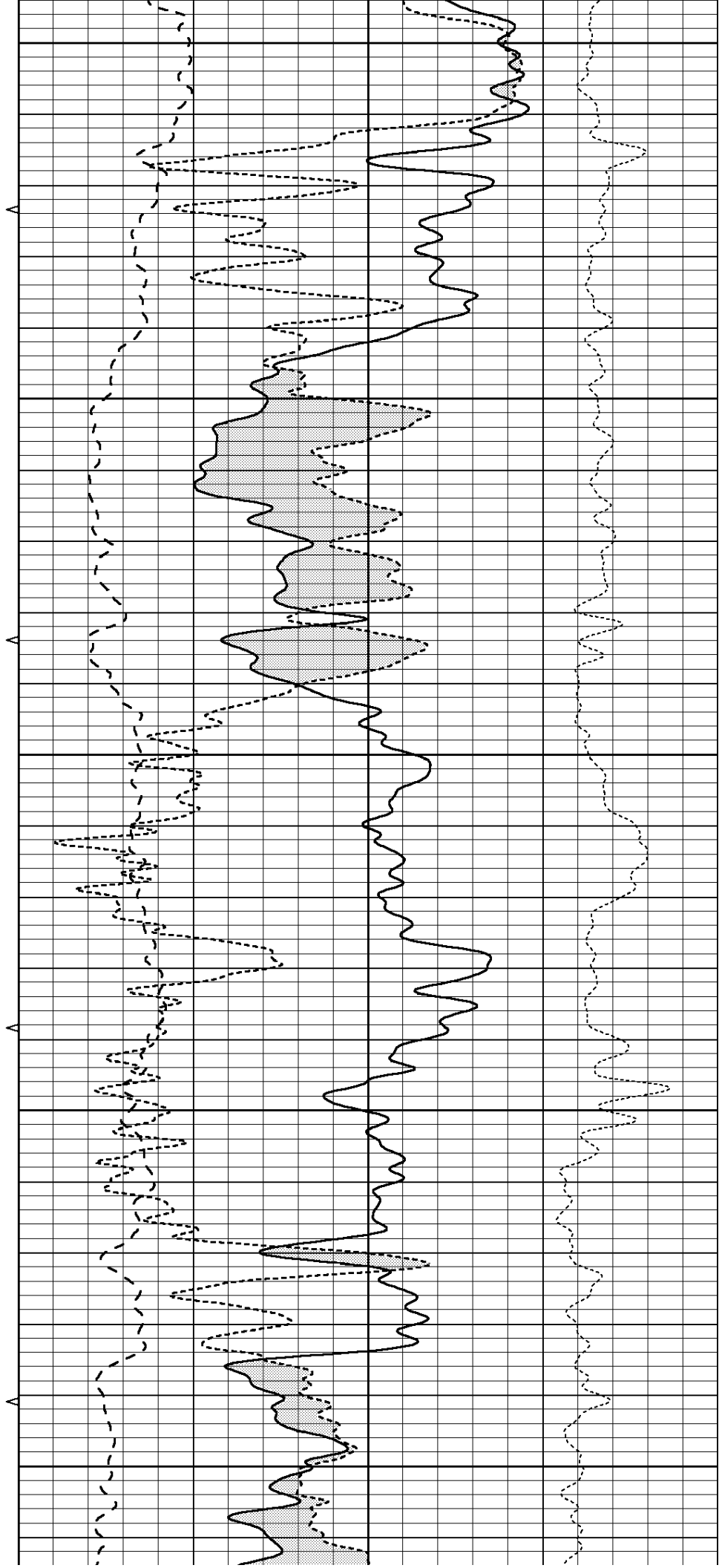
5300

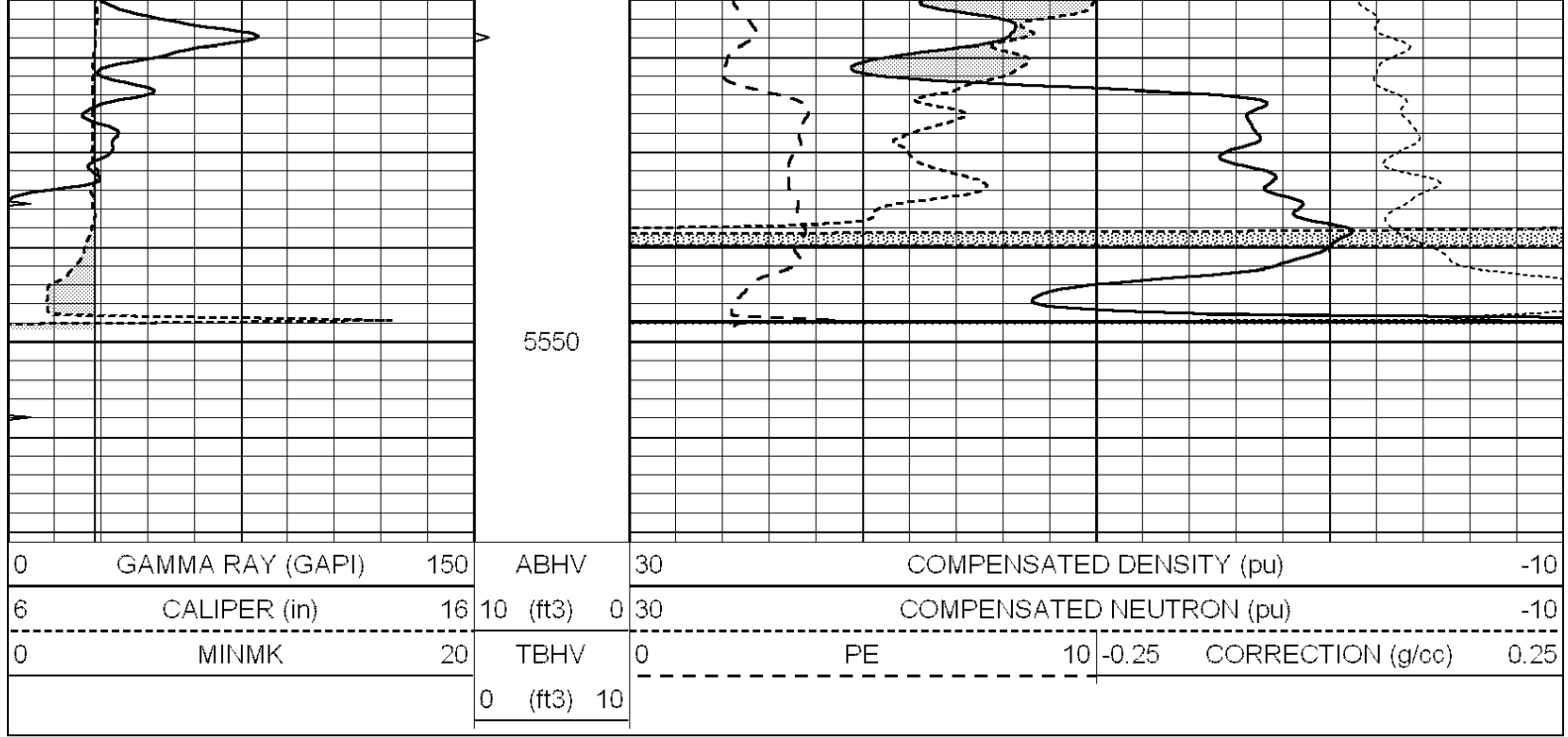
5350

5400

5450

5500





Calibration Report

Database File: 006825pe.db
 Dataset Pathname: pass4.3
 Dataset Creation: Wed May 11 10:51:50 2011 by Calc Open-Cased 090629

Dual Induction Calibration Report

Serial-Model: DIL3-GEAR
 Performed: Wed May 11 09:39:52 2011

Loop:	Readings				References			Results	
	Air	Loop			Air	Loop		m	b
Deep	0.011	0.656	V	0.000	400.000	mmho/m	640.000	0.000	
Medium	0.013	0.740	V	0.000	462.500	mmho/m	700.000	-12.000	
Internal:	Zero	Cal		Zero	Cal		m	b	
Deep	0.002	0.645	V	0.000	400.000	mmho/m	622.059	-1.071	
Medium	0.007	0.740	V	0.000	462.500	mmho/m	631.393	-4.555	

Litho Density Calibration Report

Serial: 003N Model: PRB
 Performed Tue Sep 08 14:14:44 2009

Litho Density Calibration

	Background	Magnesium	Aluminum	Sandstone	
Window 1	2042.6	12312.8	4225.8	13758.4	cps
Window 2	1855.8	10134.7	3624.2	11113.1	cps
Window 3	1639.4	6760.2	2716.3	7260.3	cps
Window 4	466.4	469.2	466.1	476.5	cps
Long Space	0.0	8278.9	1768.4	9257.4	cps
Short Space	2.2	2377.3	1544.1	2574.2	cps
Rho		1.7100	2.5900	1.3800	g/cc
Pe			2.5700	1.5500	
Rib Angle	: 44.4	Rib Slope	: 0.979	Density/Spine Ratio	: 0.549
Spine Angle	: 74.4	Spine Slope	: 3.577	Spine Intercept	: -18.8

Caliper

Readings
Low Ref 2.1
High Ref 4.4
Gain: 3.1

Reference
6.9
14.0

Offset: 0.5

Compensated Neutron Calibration Report

Serial Number: NEU_4I
Tool Model: G

CALIBRATION

Detector	Readings	Target	Normalization
Short Space	996.00 cps	1000.00 cps	1.0000
Long Space	977.00 cps	1000.00 cps	1.0000

Gamma Ray Calibration Report

Serial Number: GR4
Tool Model: OPEN
Performed: Wed May 11 09:40:12 2011

Calibrator Value: 200.0 GAPI

Background Reading: 0.0 cps
Calibrator Reading: 189.0 cps

Sensitivity: 1.8000 GAPI/cps