



SUPERIOR
Hays,
Kansas

**MICRO
LOG**

Company LOTUS OPERATING CO. LLC.
Well #2 MOLZ "L"
Field STANATHAN
County BARBER
State KANSAS

Company LOTUS OPERATING COMPANY, LLC.
Well #2 MOLZ "L"
Field STANATHAN
County BARBER State KANSAS

Location: API # : 15-007-23691-0000
660' FSL & 330' FEL
SEC 1 TWP 35S RGE 12W
Permanent Datum GROUND LEVEL Elevation 1399
Log Measured From KELLY BUSHING 13' A.G.L.
Drilling Measured From KELLY BUSHING
Other Services
CDL/CNL/PE
DIL/SONIC
Elevation
K.B. 1412
D.F. 1410
G.L. 1399

Date	5/11/11		
Run Number	TWO		
Depth Driller	5567		
Depth Logger	5568		
Bottom Logged Interval	5545		
Top Log Interval	3700		
Casing Driller	10 3/4" @ 255'		
Casing Logger	255		
Bit Size	7 7/8"		
Type Fluid in Hole	CHEMICAL MUD	CHLORIDES 3,000 PPM	
Density / Viscosity	9.3/43		
pH / Fluid Loss	9.0/10.0		
Source of Sample	FLOWLINE		
Rin @ Meas. Temp	.650 @ 75F		
Rmf @ Meas. Temp	.488 @ 75F		
Rmc @ Meas. Temp	.780 @ 75F		
Source of Rmf / Rmc	MEASUREMENT		
Rin @ BHT	.375 @ 130F		
Time Circulation Stopped	5.5 HOURS		
Time Logger on Bottom	9:15 A.M.		
Maximum Recorded Temperature	130F		
Equipment Number	0836		
Location	HAYS, KANSAS		
Recorded By	JEFF LUEBBERS		
Witnessed By	TIM HELLMAN		

<<< Fold Here >>>

All interpretations are opinions based on inferences from electrical or other measurements and we cannot and do not guarantee the accuracy or correctness of any interpretation, and we shall not, except in the case of gross or willful negligence on our part, be liable or responsible for any loss, costs, damages, or expenses incurred or sustained by anyone resulting from any interpretation made by any of our officers, agents or employees. These interpretations are also subject to our general terms and conditions set out in our current Price Schedule.

Comments

THANK YOU FOR USING SUPERIOR WELL SERVICE HAYS, KANSAS (785) 628-6395
DIRECTIONS
MEDICINE LODGE, KS. (JUNCTION OF HWY 160 & 281) 17 1/2 S. ON HWY 281 W. INTO BEFORE HWY 2

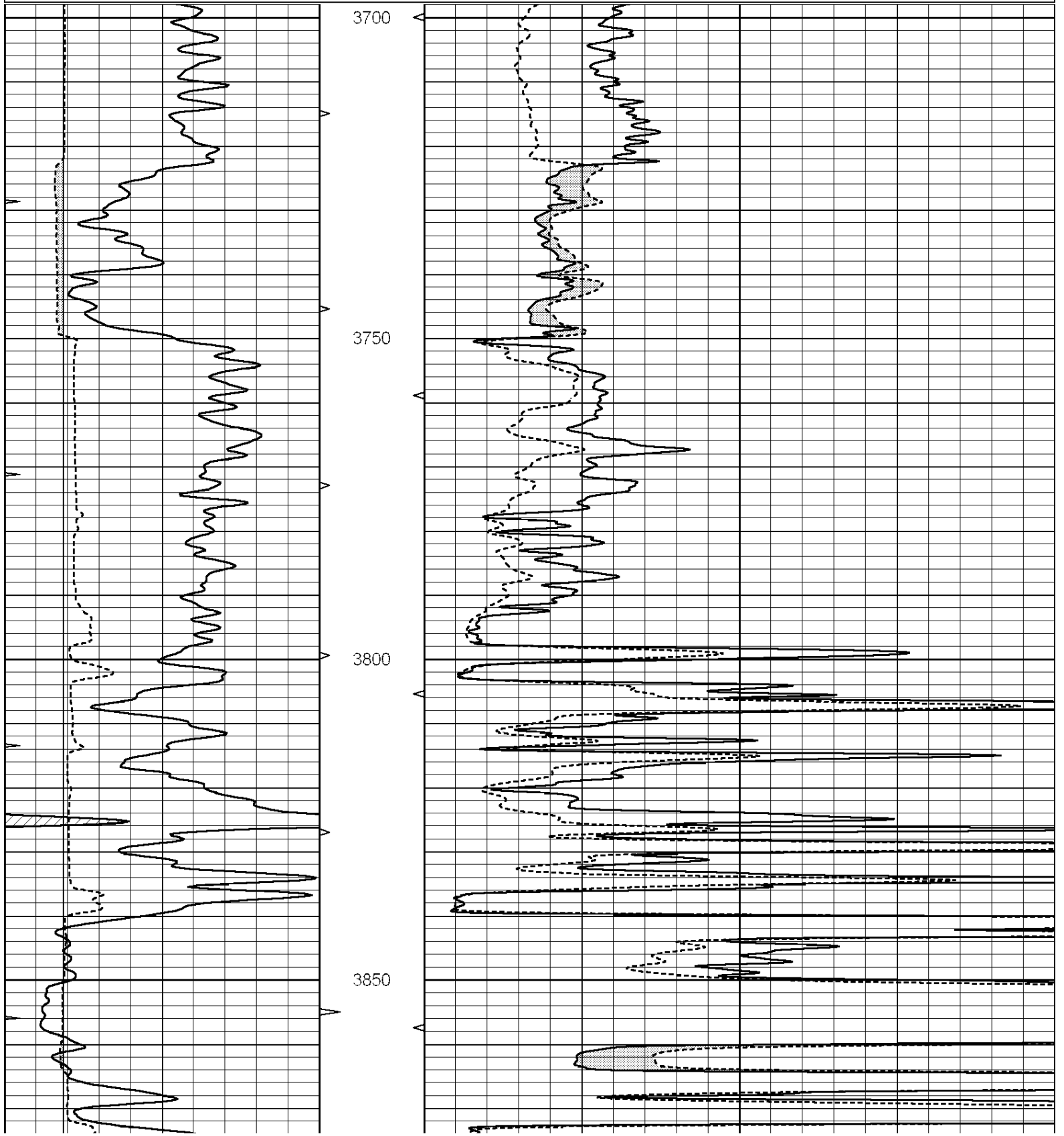


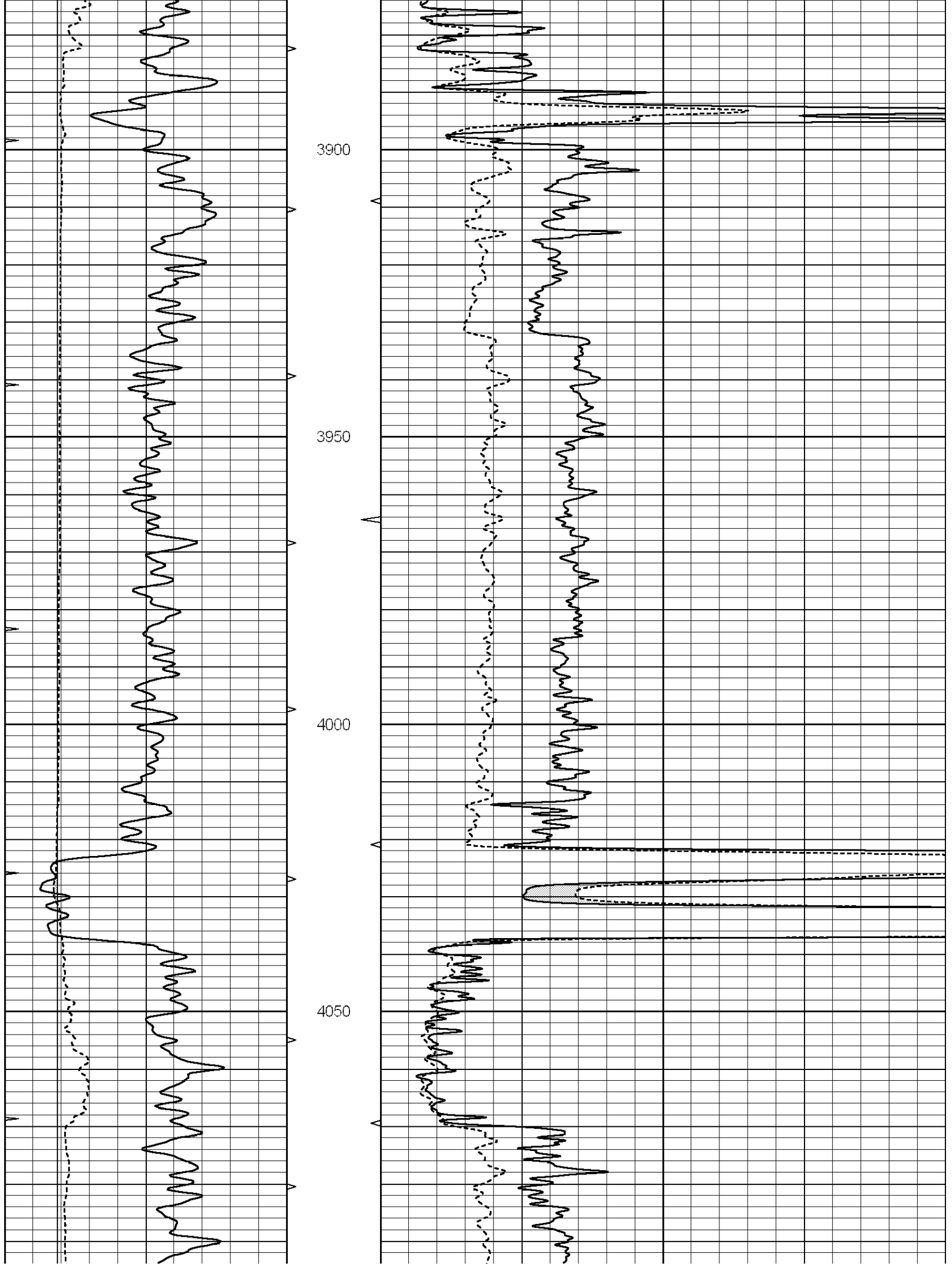
SUPERIOR
Hays,
Kansas

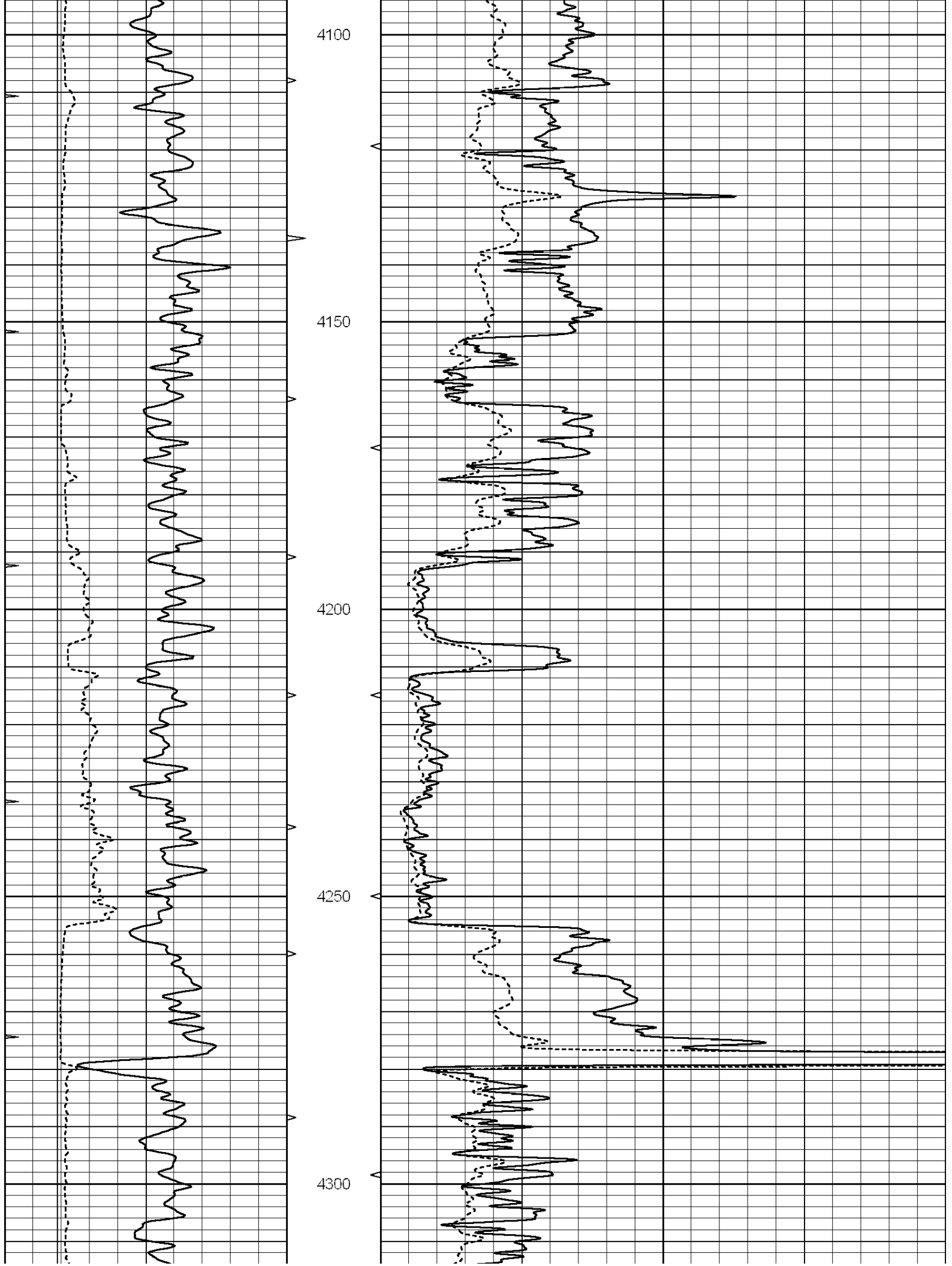
MAIN SECTION

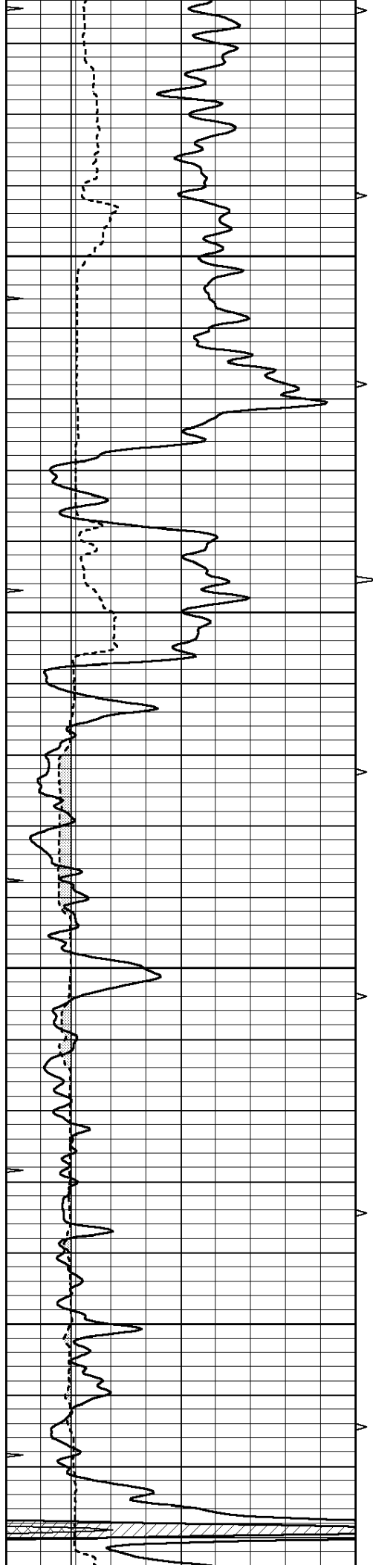
Database File: 006825pe.db
 Dataset Pathname: pass7.3
 Presentation Format: micro
 Dataset Creation: Wed May 11 13:24:14 2011 by Calc Open-Cased 090629
 Charted by: Depth in Feet scaled 1:240

0	GAMMA RAY (GAPI)	150	ABHV	0	MEL1.5 (Ohm-m)	40
6	CALIPER (in)	16	10 (ft3)	0	MEL2.0 (Ohm-m)	40
0	MINMK	20	TBHV			
			0 (ft3)	10		







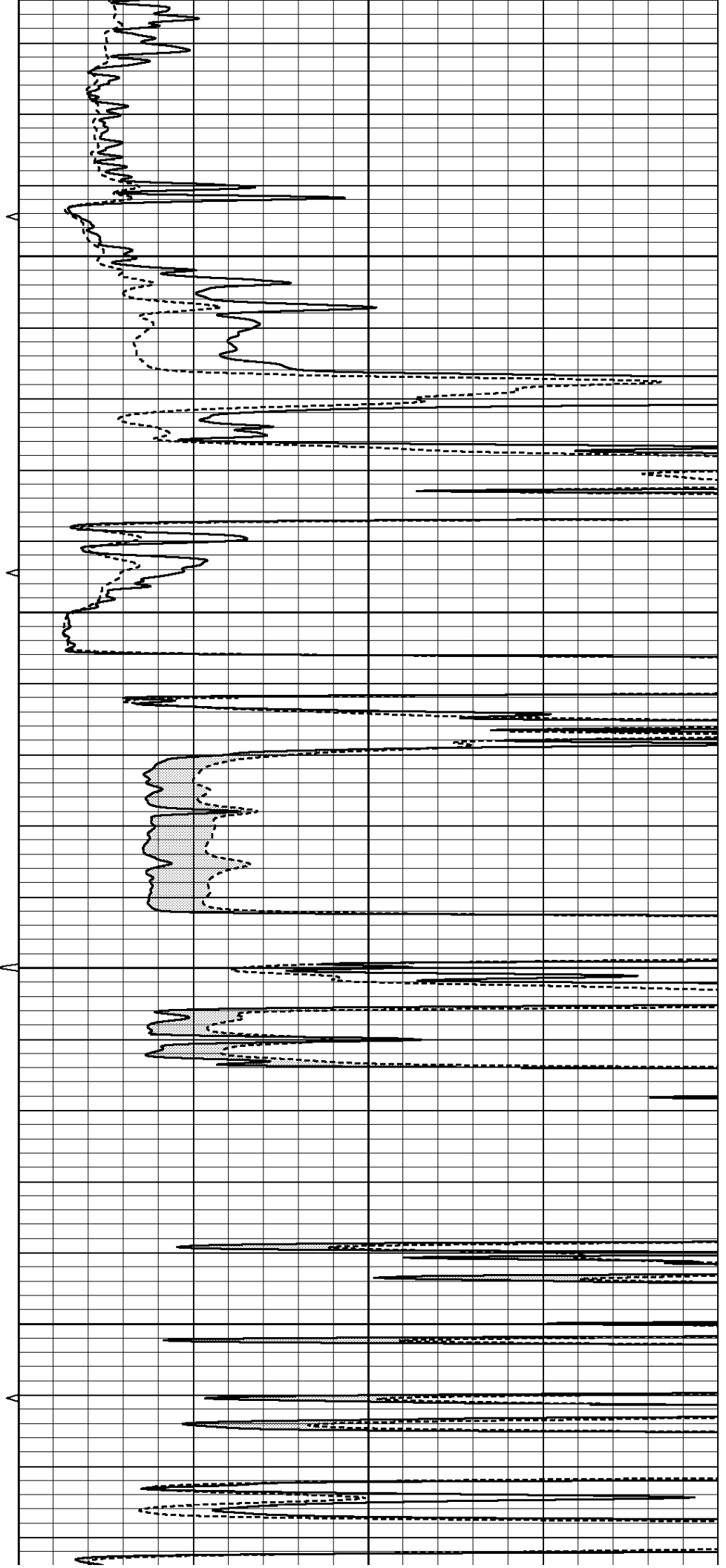


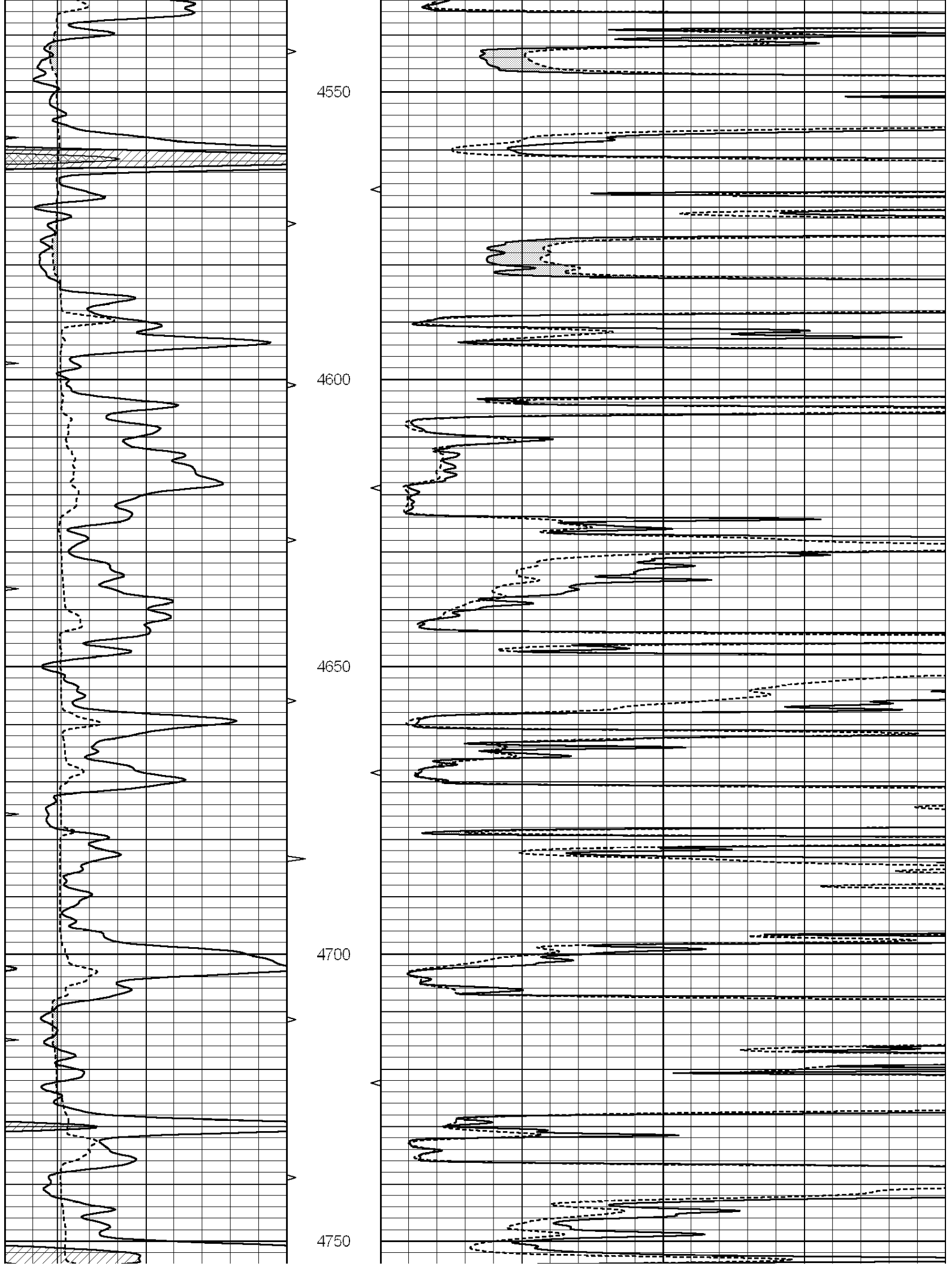
4350

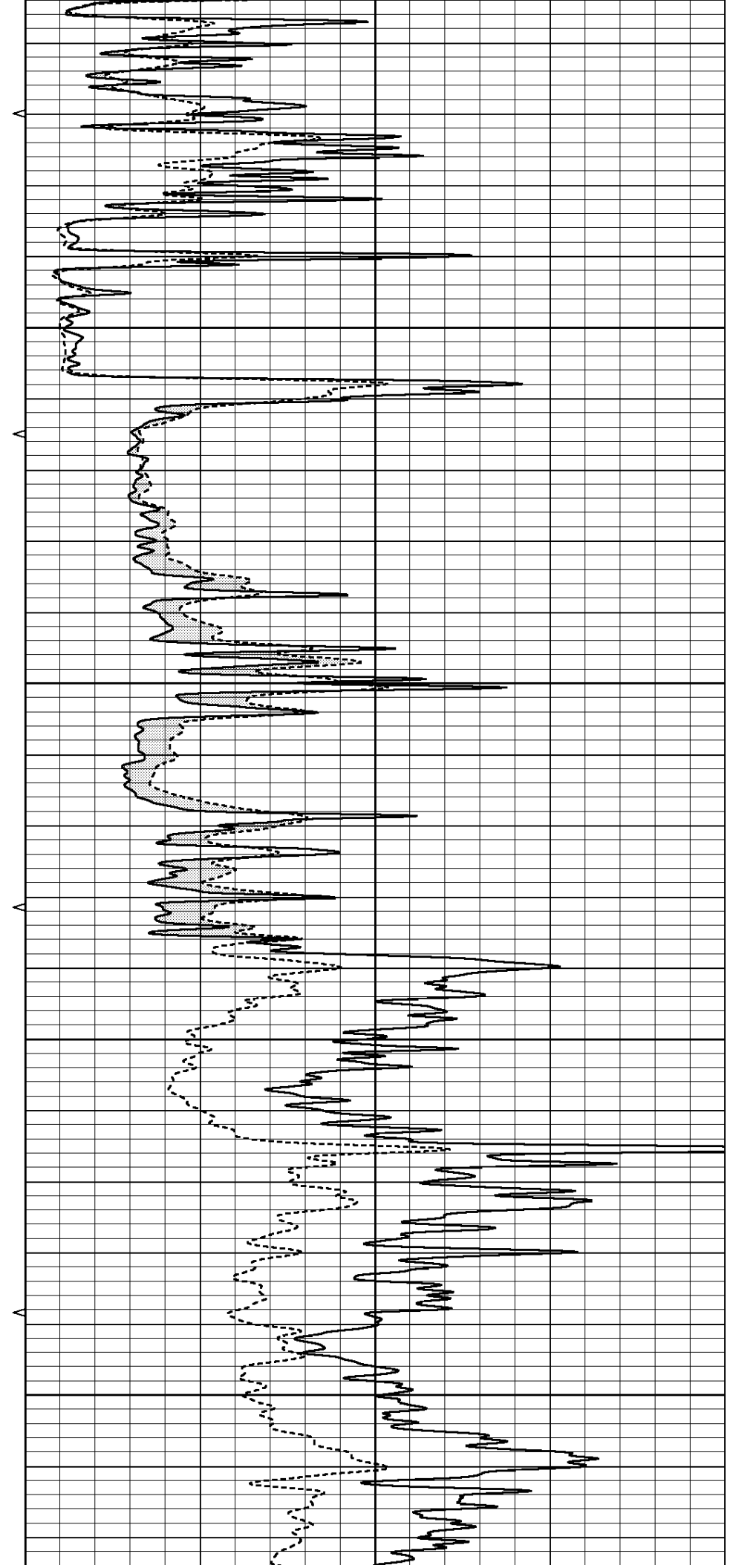
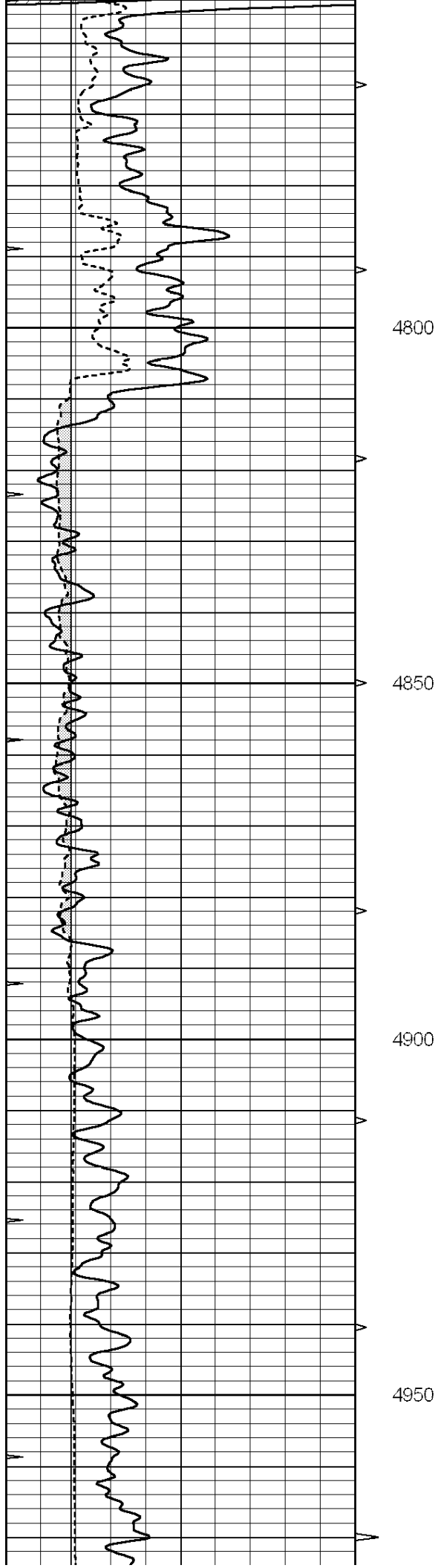
4400

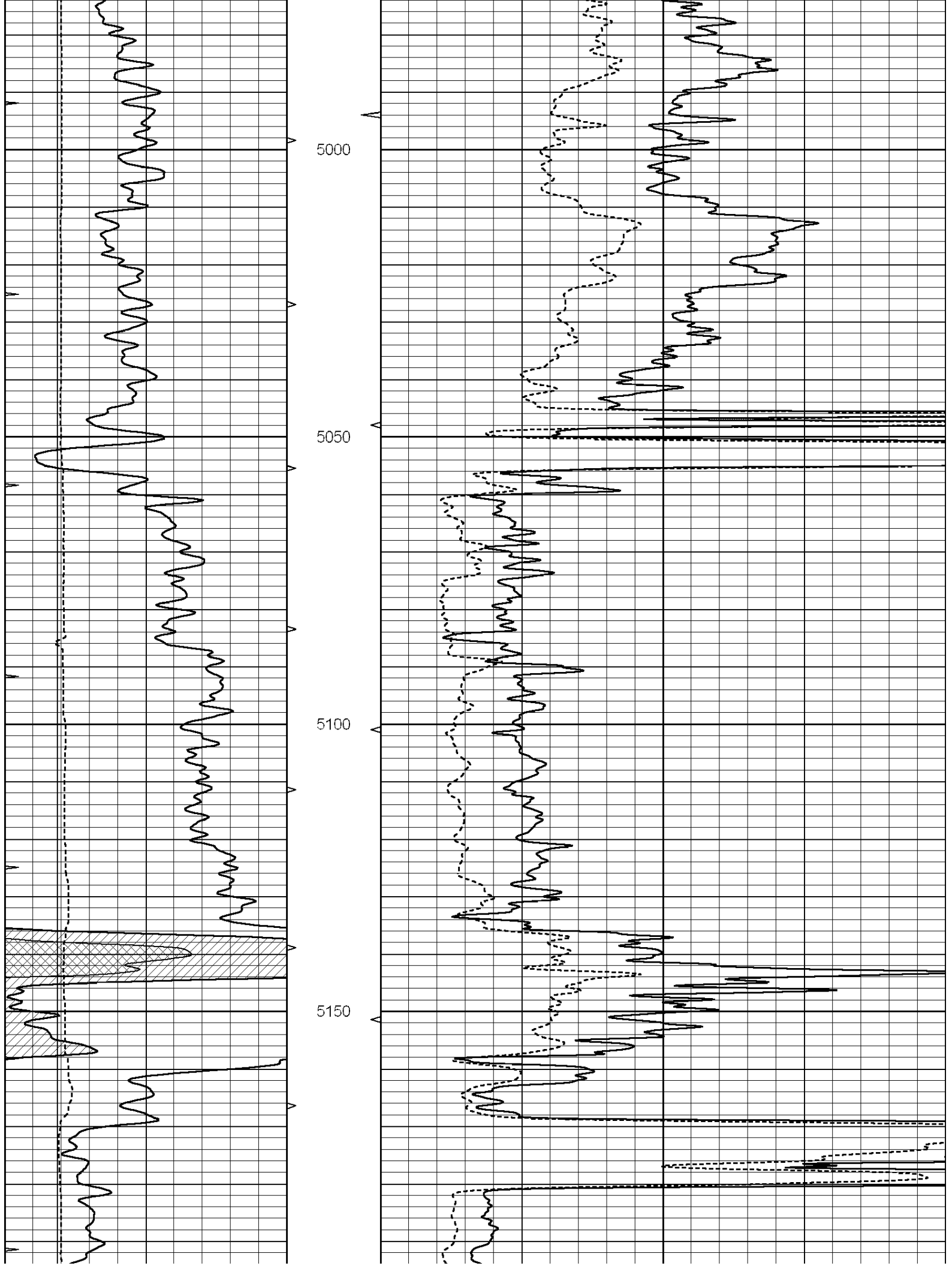
4450

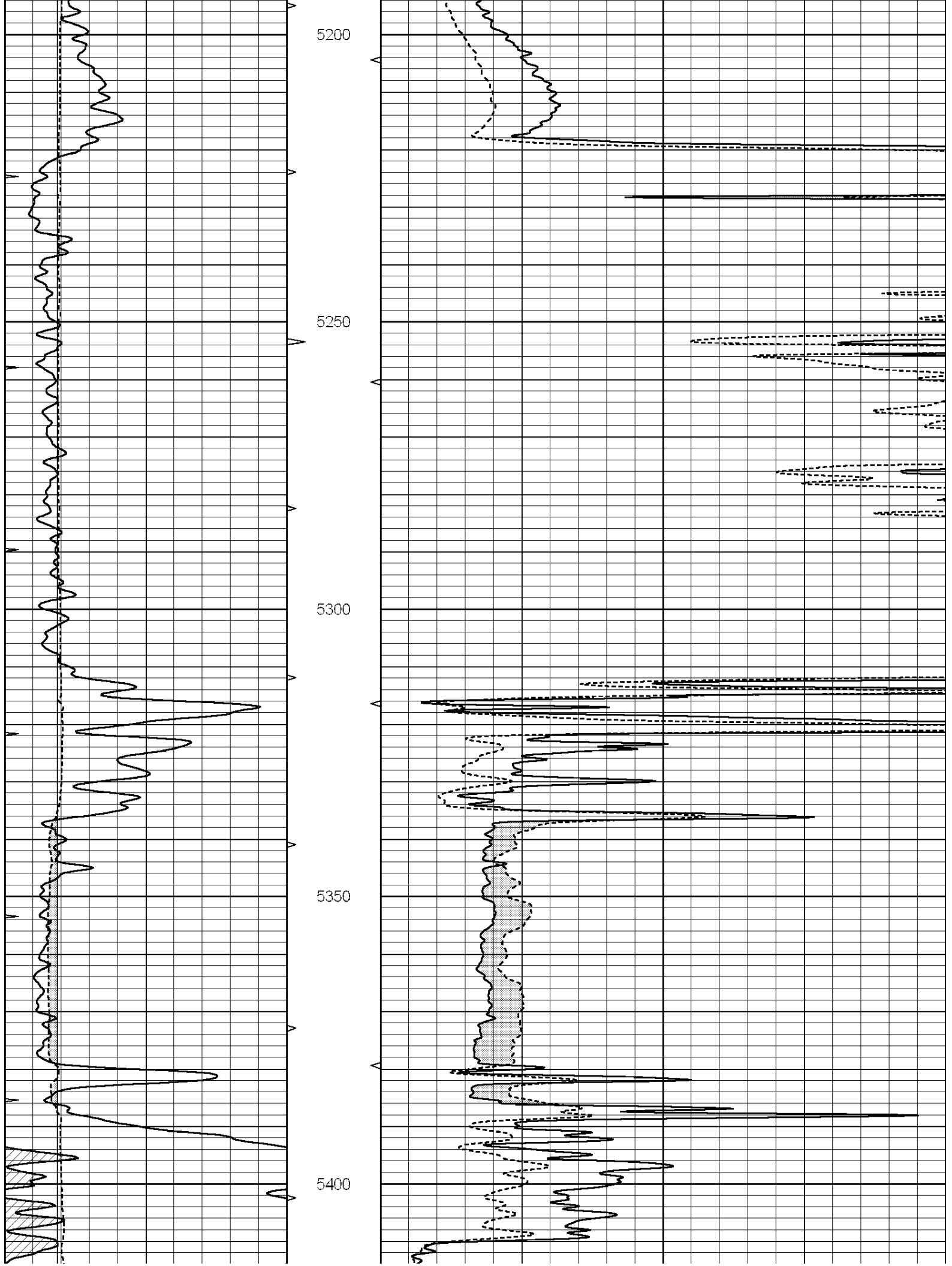
4500

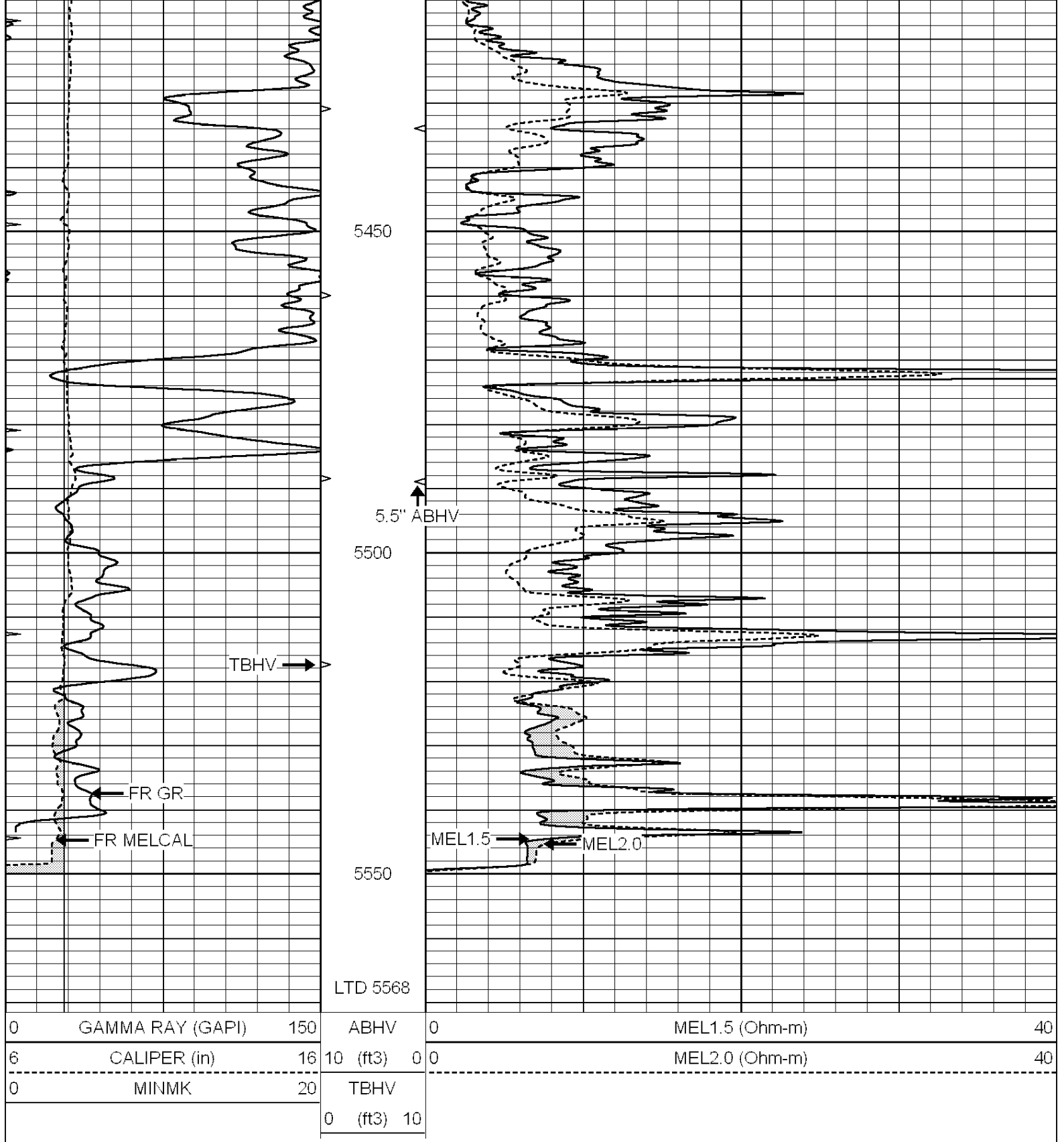












SUPERIOR
Hays,
Kansas

REPEAT SECTION

Database File: 006825pe.db
 Dataset Pathname: pass6.3
 Presentation Format: micro
 Dataset Creation: Wed May 11 12:24:19 2011 by Calc Open-Cased 090629
 Charted by: Depth in Feet scaled 1:240

0	GAMMA RAY (GAPI)	150	ABHV	0	MEL1.5 (Ohm-m)	40
6	CALIPER (in)	16	10 (ft3)	0 0	MEL2.0 (Ohm-m)	40
0	MINMK	20	TBHV			
			0 (ft3)	10		

