



SUPERIOR
Hays,
Kansas

**DUAL INDUCTION
LOG**

Company LOTUS OPERATING CO. LLC.
Well #2 MOLZ "L"
Field STANATHAN
County BARBER
State KANSAS

Company LOTUS OPERATING COMPANY, LLC.
Well #2 MOLZ "L"
Field STANATHAN
County BARBER State KANSAS

Location: API # : 15-007-23691-0000
660' FSL & 330' FEL
SEC 1 TWP 35S RGE 12W
Permanent Datum GROUND LEVEL Elevation 1399
Log Measured From KELLY BUSHING 13' A.G.L.
Drilling Measured From KELLY BUSHING
Other Services
CDL/CNL/PE
MEL/SONIC
Elevation
K.B. 1412
D.F. 1410
G.L. 1399

Date	5/11/11
Run Number	ONE
Depth Driller	5567
Depth Logger	5568
Bottom Logged Interval	5566
Top Log Interval	00
Casing Driller	10 3/4" @ 255'
Casing Logger	255
Bit Size	7 7/8"
Type Fluid in Hole	CHEMICAL MUD
Density / Viscosity	9.3/43
pH / Fluid Loss	9.0/10.0
Source of Sample	FLOWLINE
Rin @ Meas. Temp	.650 @ 75F
Rmf @ Meas. Temp	.488 @ 75F
Rmc @ Meas. Temp	.780 @ 75F
Source of Rmf / Rmc	MEASUREMENT
Rin @ BHT	.375 @ 130F
Time Circulation Stopped	3 HOURS
Time Logger on Bottom	9:15 A.M.
Maximum Recorded Temperature	130F
Equipment Number	0836
Location	HAYS, KANSAS
Recorded By	JEFF LUEBBERS
Witnessed By	TIM HELLMAN

<<< Fold Here >>>

All interpretations are opinions based on inferences from electrical or other measurements and we cannot and do not guarantee the accuracy or correctness of any interpretation, and we shall not, except in the case of gross or willful negligence on our part, be liable or responsible for any loss, costs, damages, or expenses incurred or sustained by anyone resulting from any interpretation made by any of our officers, agents or employees. These interpretations are also subject to our general terms and conditions set out in our current Price Schedule.

Comments

THANK YOU FOR USING SUPERIOR WELL SERVICE HAYS, KANSAS (785) 628-6395
DIRECTIONS
MEDICINE LODGE, KS. (JUNCTION OF HWY 160 & 281) 17 1/2 S. ON HWY 281 W. INTO BEFORE HWY 2



SUPERIOR
Hays,
Kansas

MAIN SECTION

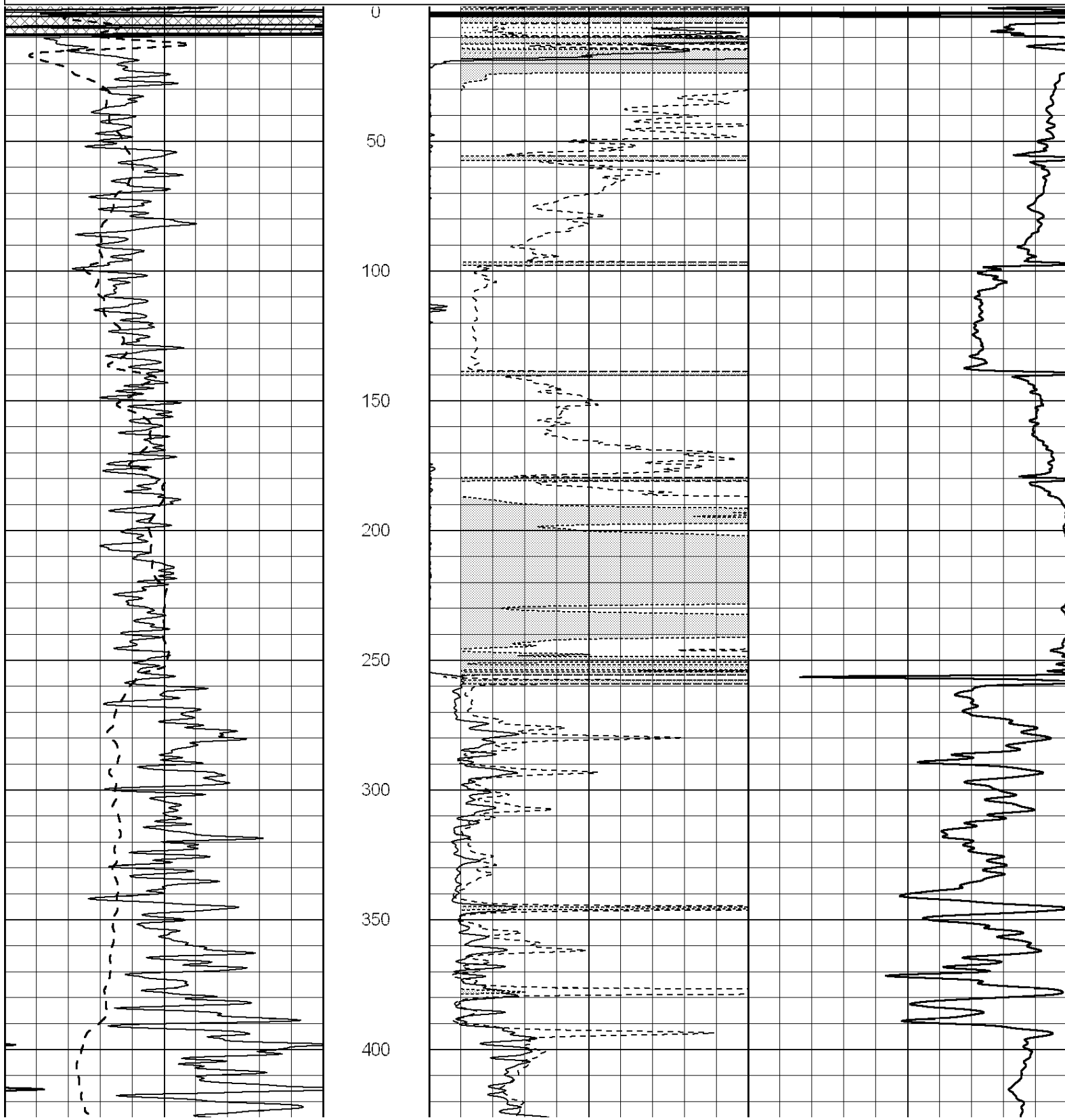
Database File: 006825pe.db
 Dataset Pathname: pass4.4
 Presentation Format: dil2
 Dataset Creation: Wed May 11 11:21:44 2011 by Calc Open-Cased 090629
 Charted by: Depth in Feet scaled 1:600

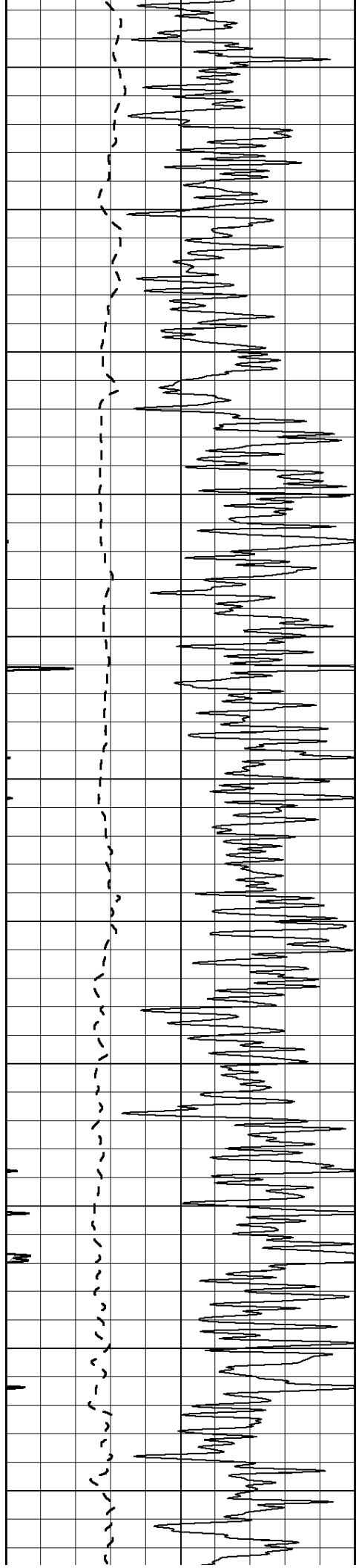
0 Gamma Ray (GAPI) 150
 -100 SP (mV) 100

0 RLL3 (Ohm-m) 50
 0 RILD (Ohm-m) 50

1000 CILD (mmho/m) 0

50 RILD X10 (Ohm-m) 500
 50 RLL3 X10 (Ohm-m) 500





450

500

550

600

650

700

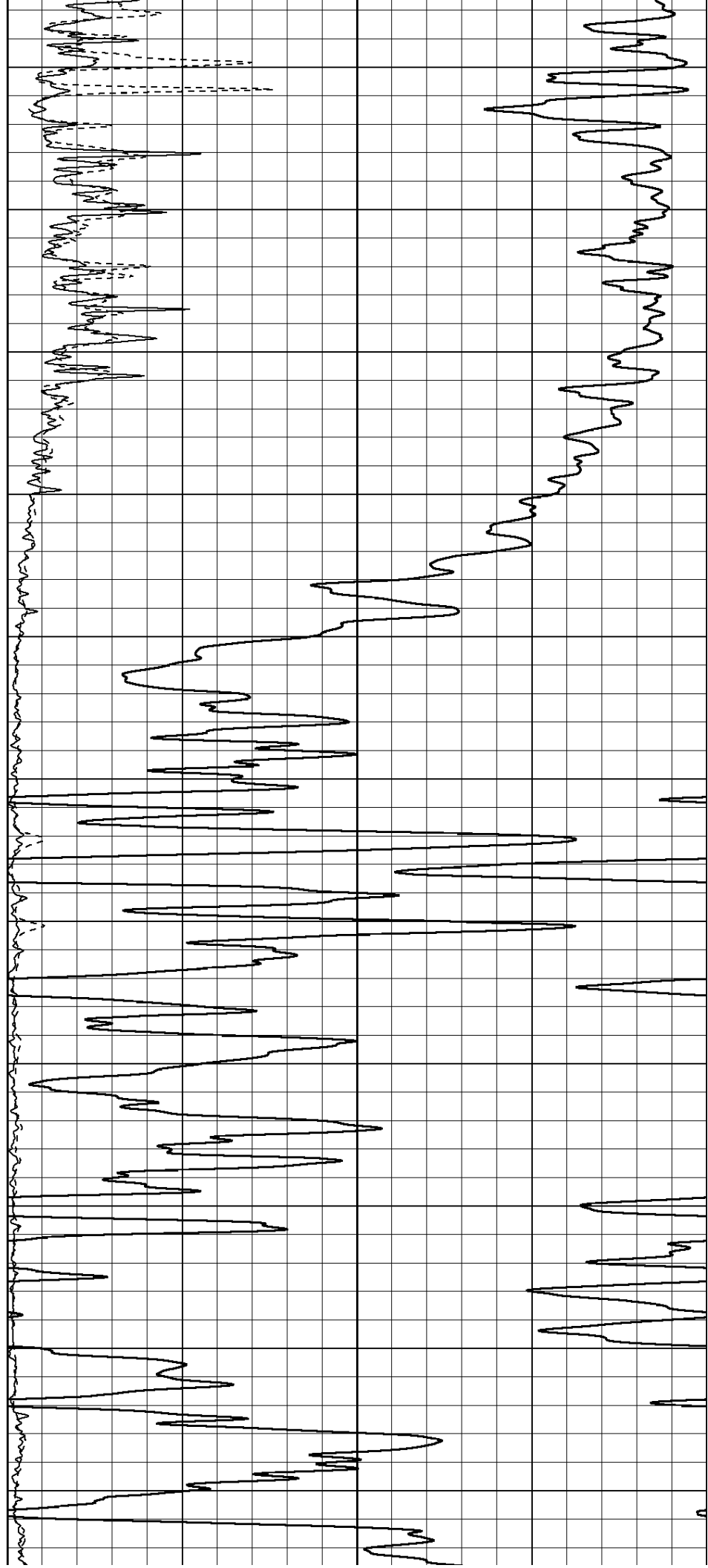
750

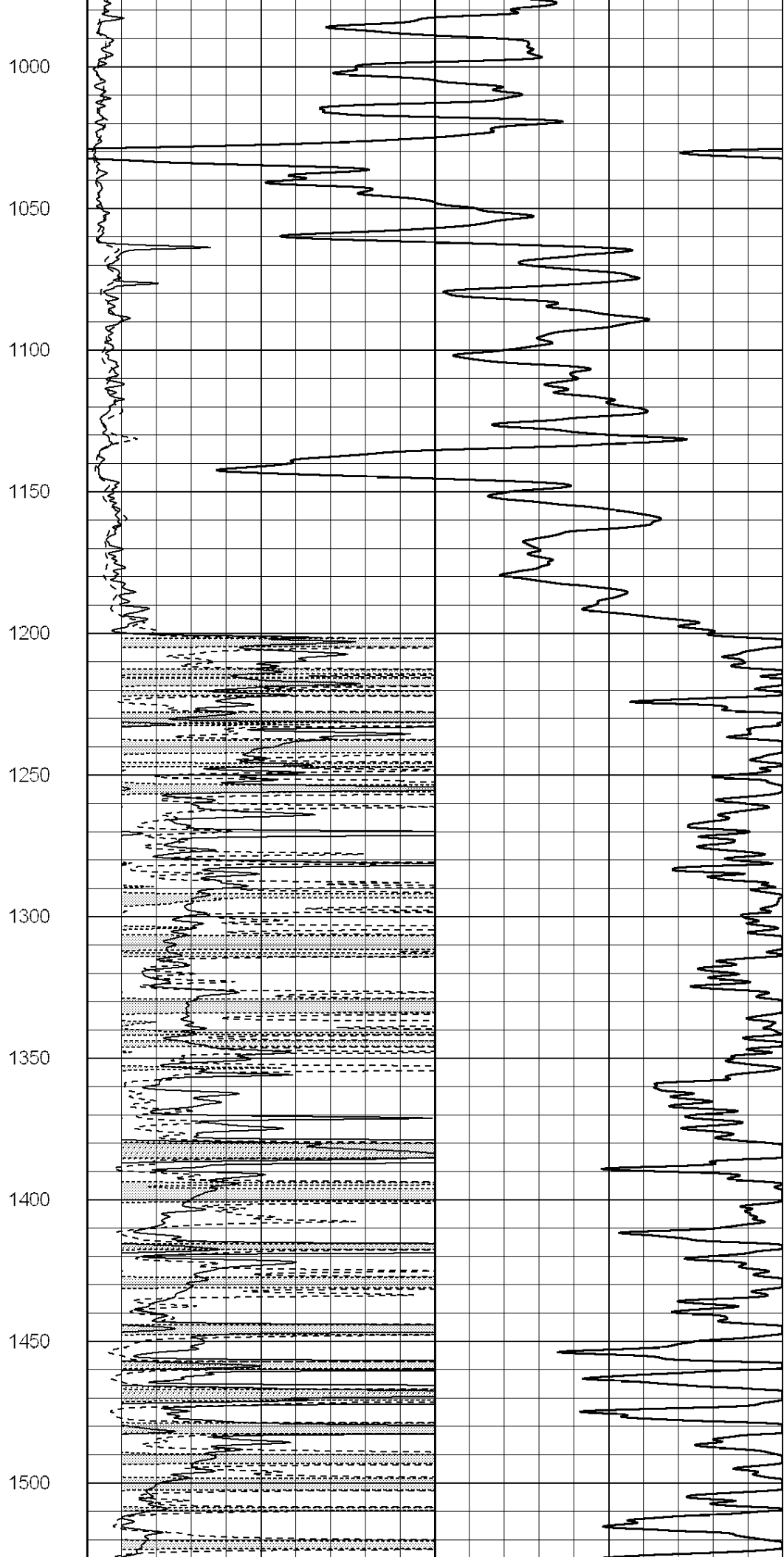
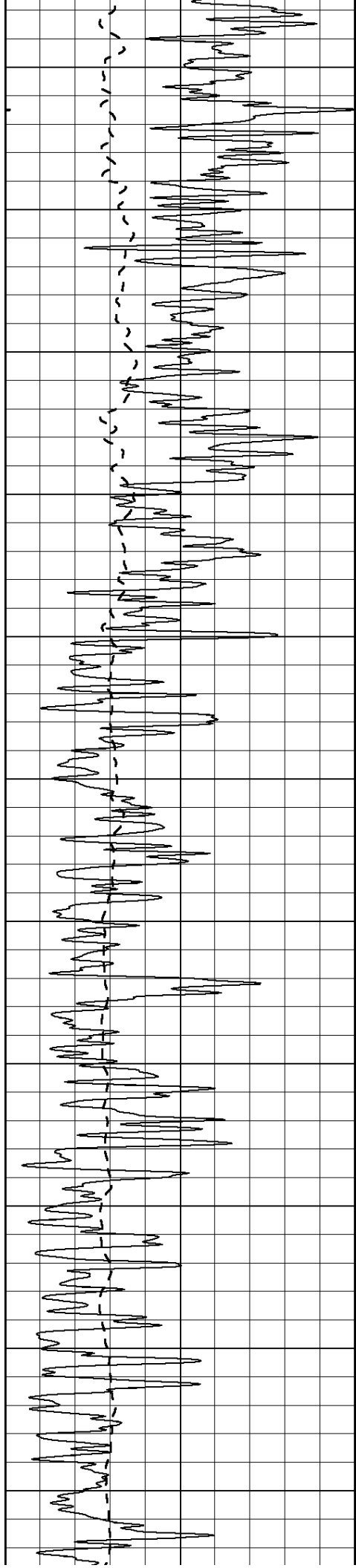
800

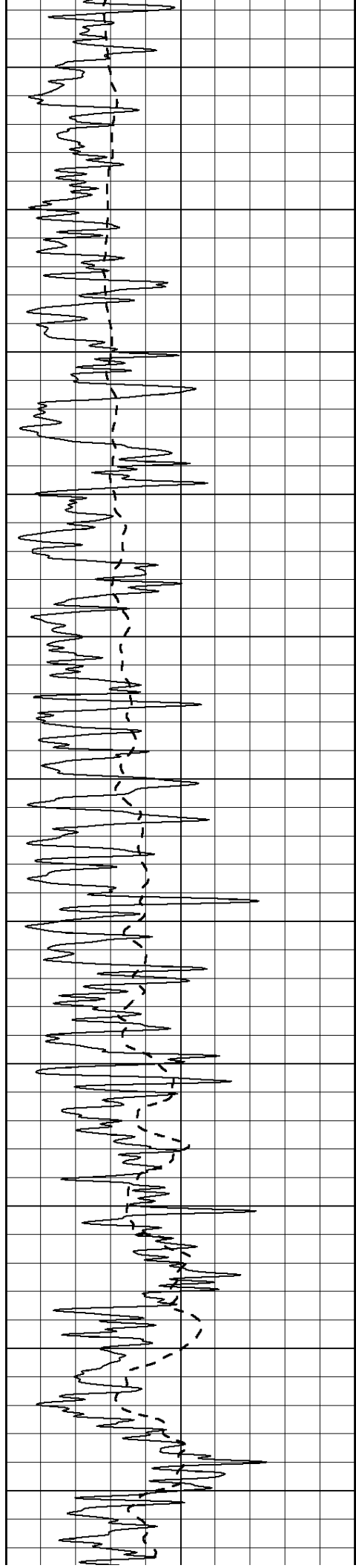
850

900

950







1550

1600

1650

1700

1750

1800

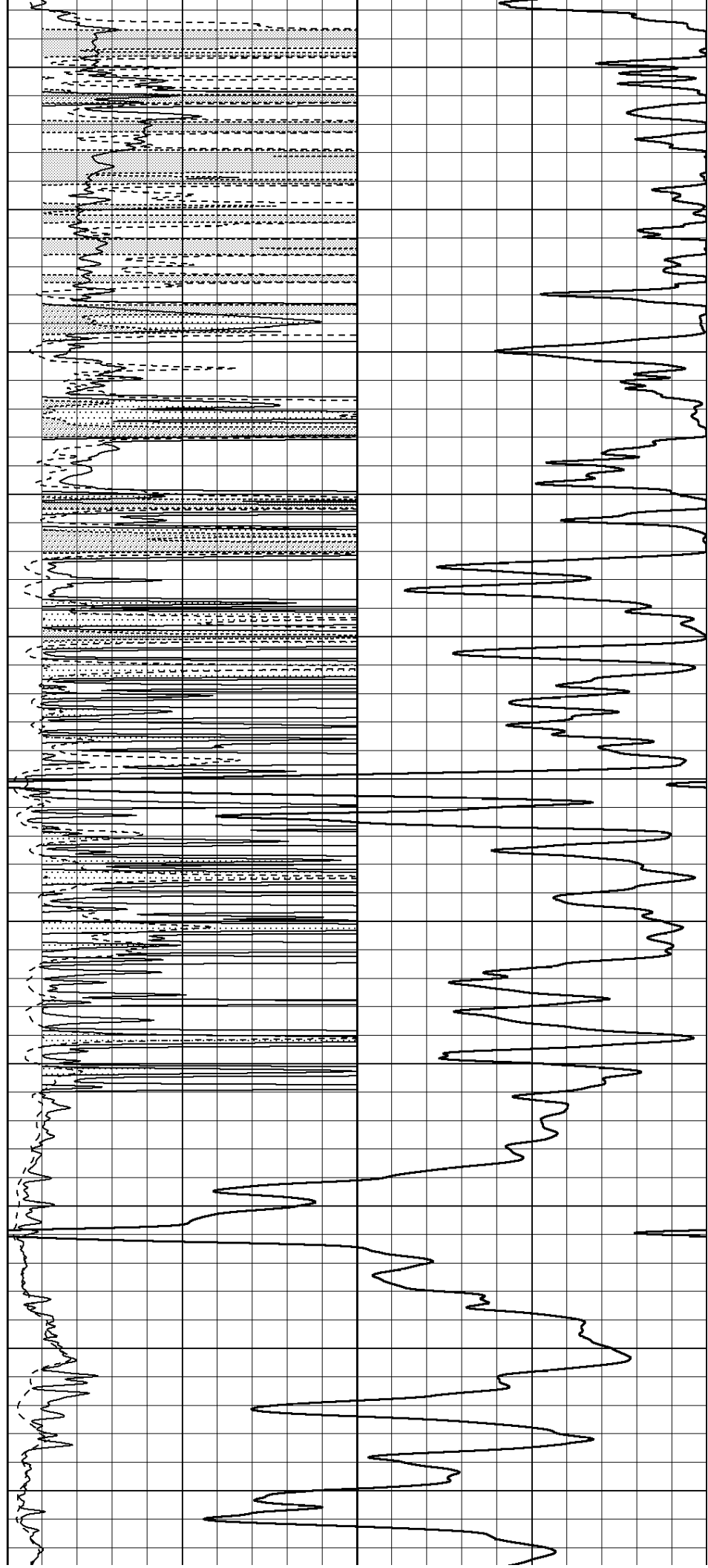
1850

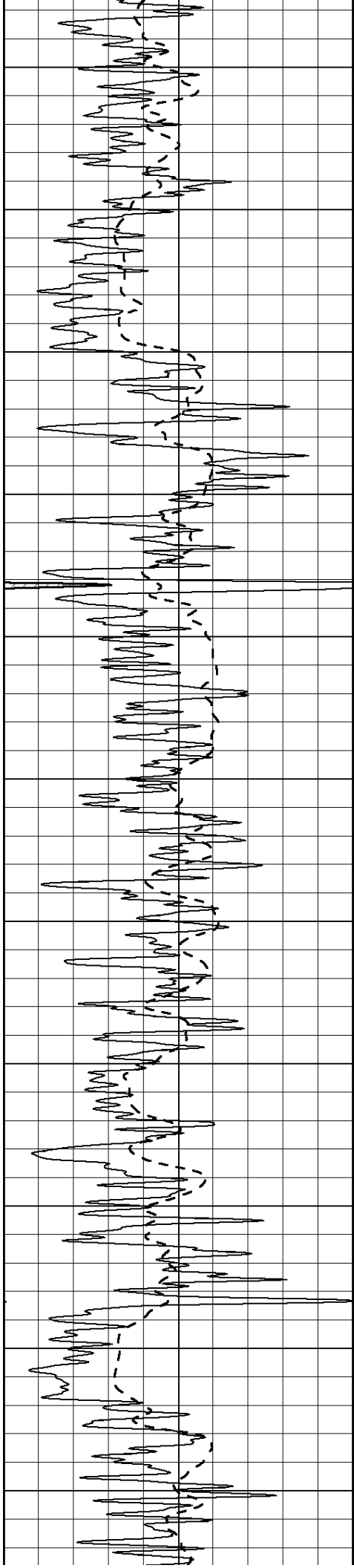
1900

1950

2000

2050





2100

2150

2200

2250

2300

2350

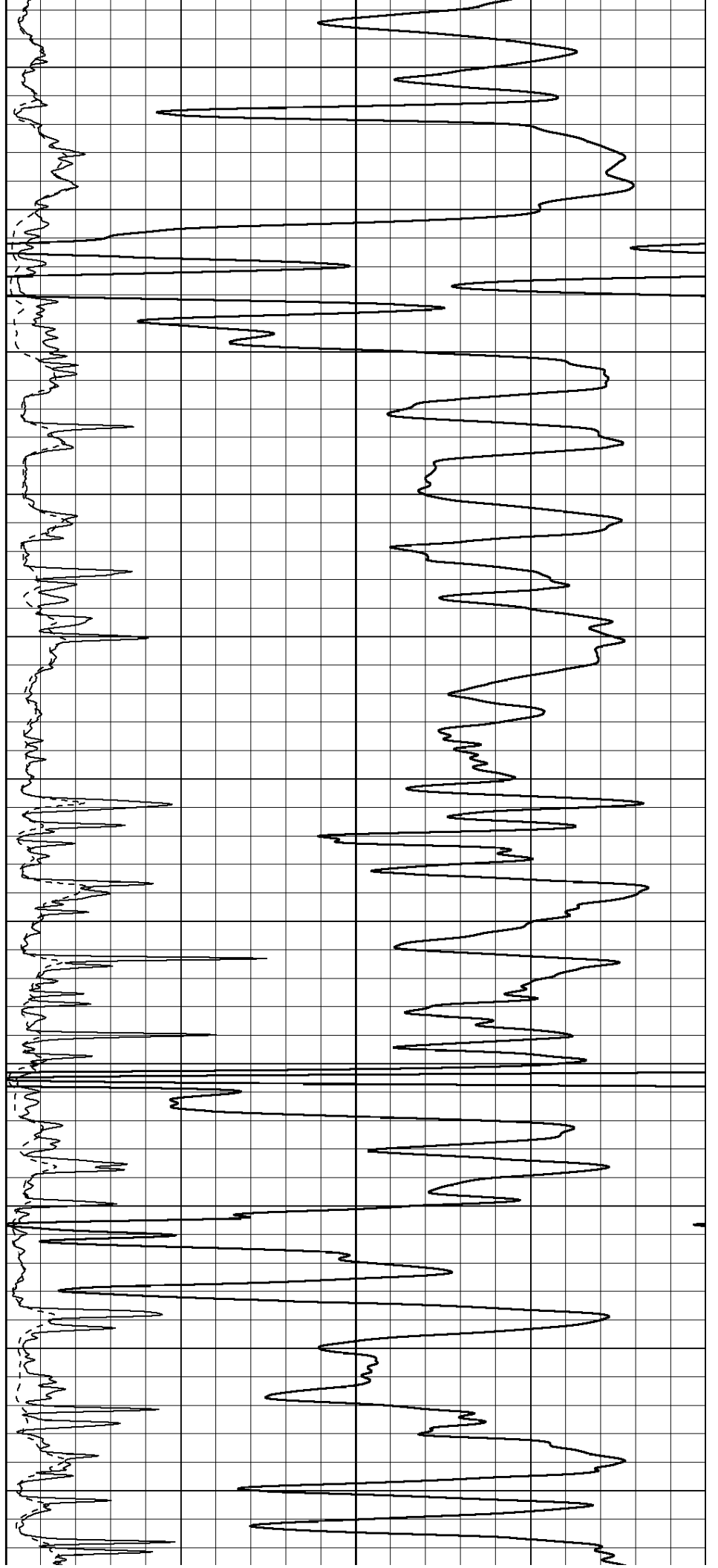
2400

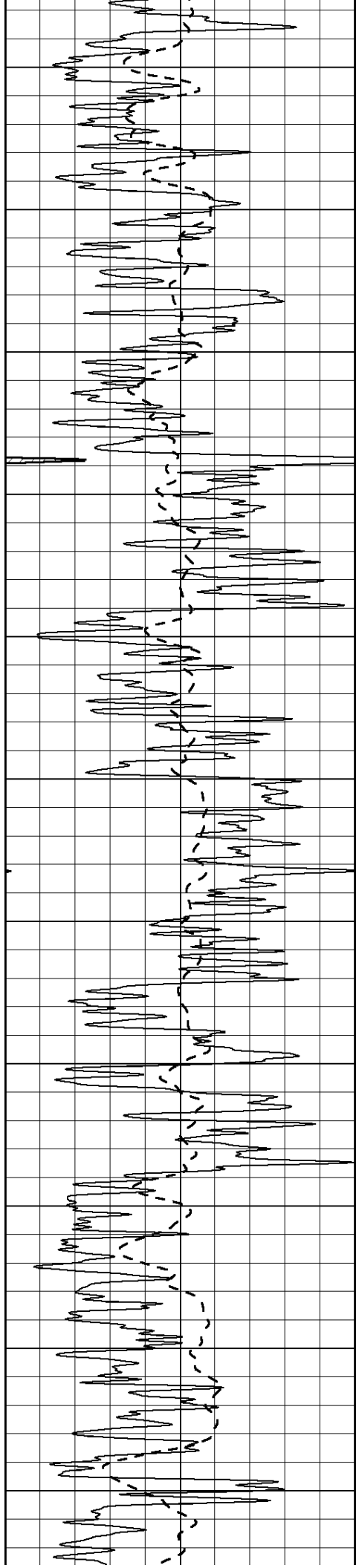
2450

2500

2550

2600





2650

2700

2750

2800

2850

2900

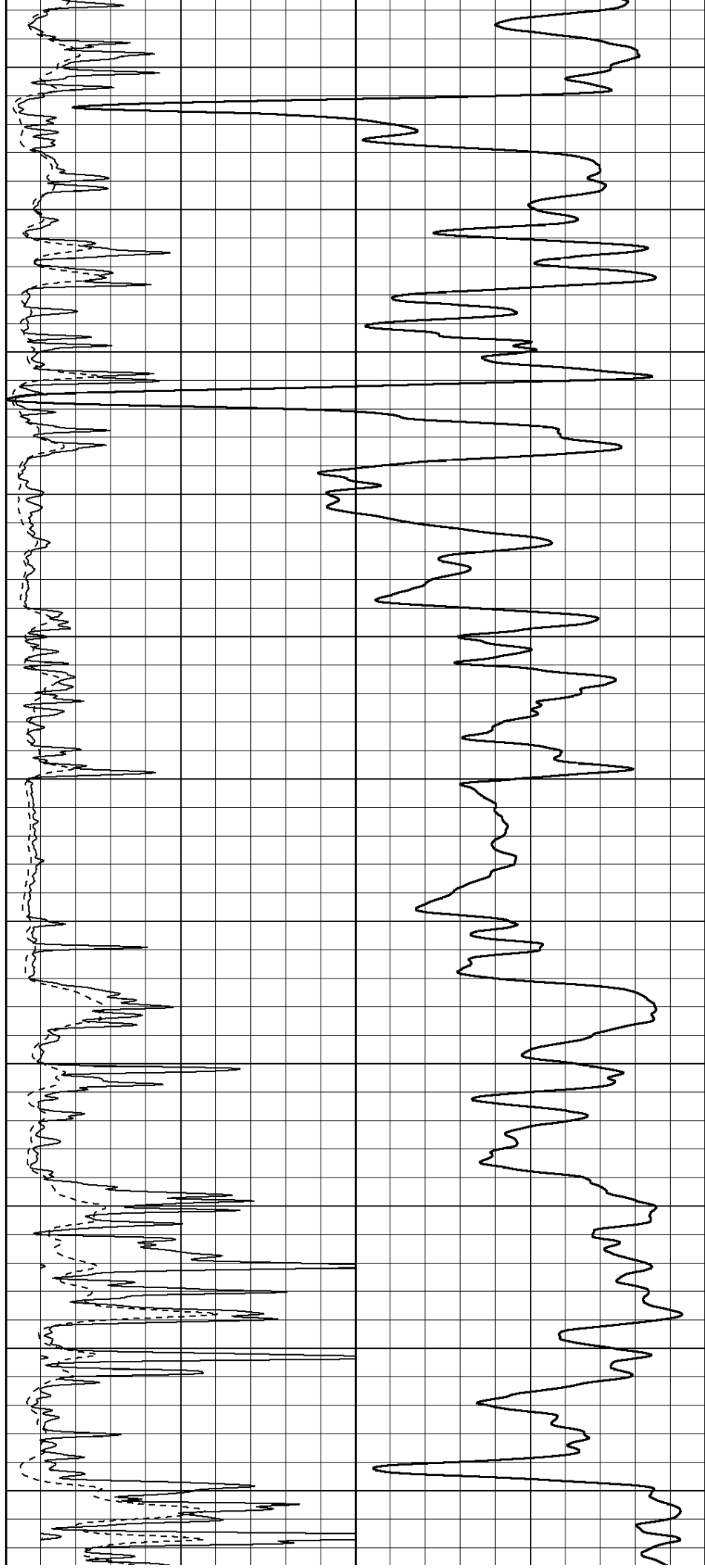
2950

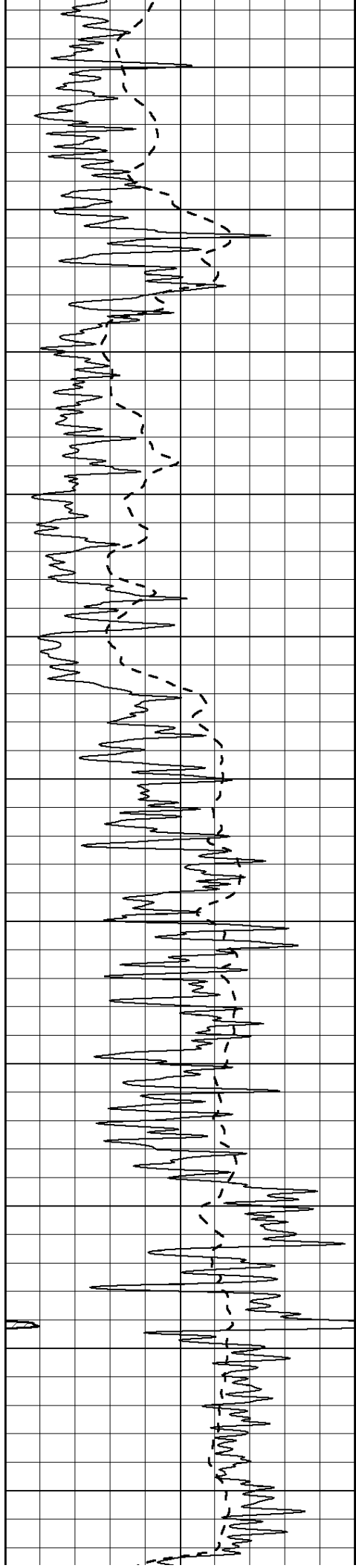
3000

3050

3100

3150





3200

3250

3300

3350

3400

3450

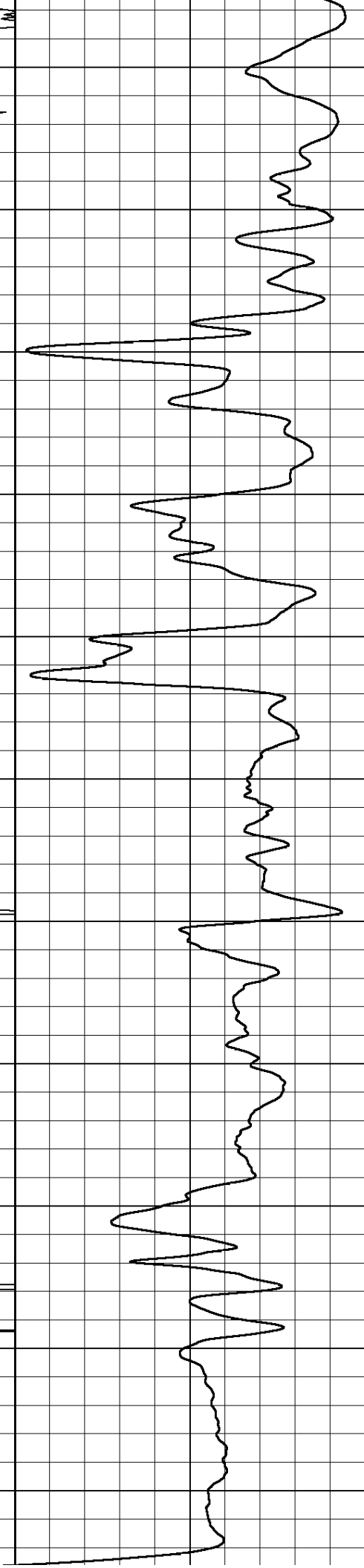
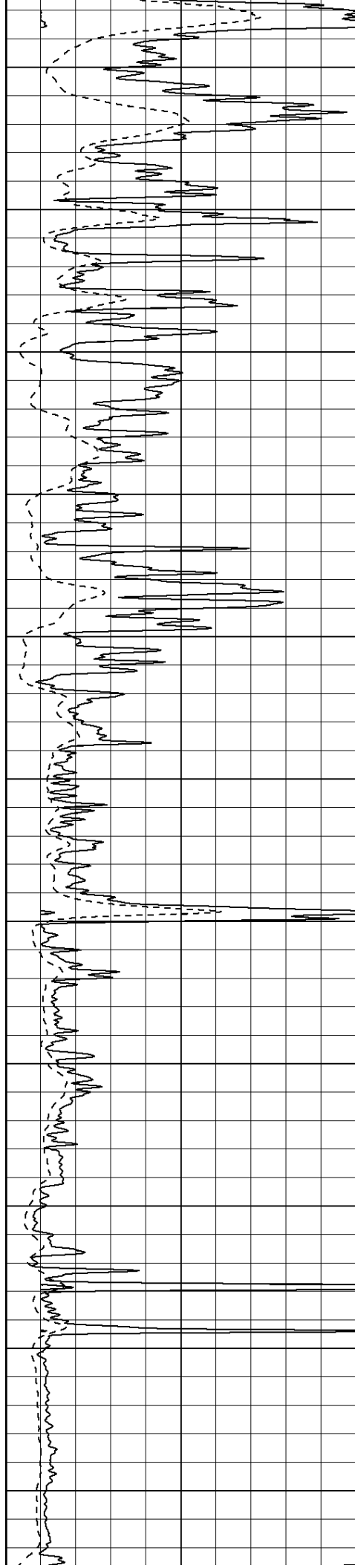
3500

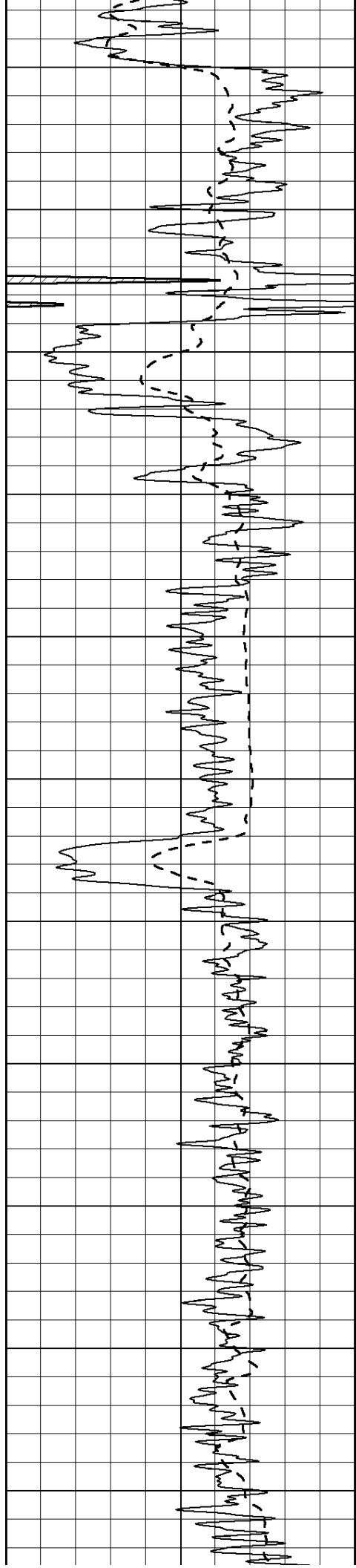
3550

3600

3650

3700





3750

3800

3850

3900

3950

4000

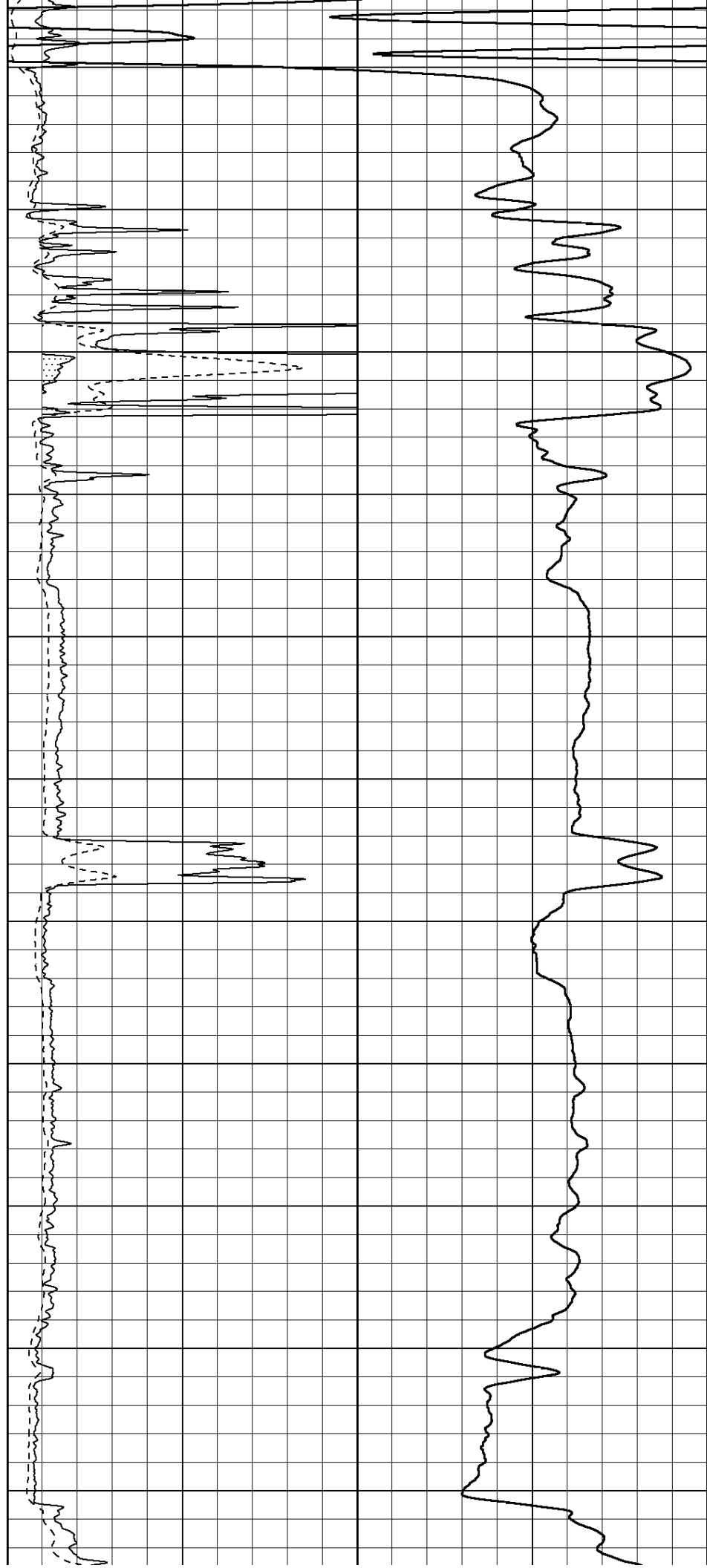
4050

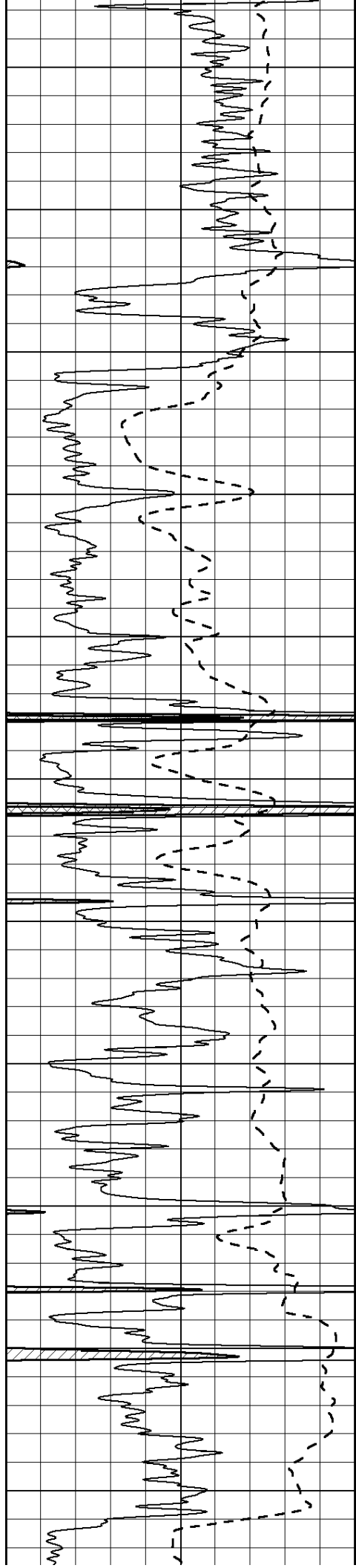
4100

4150

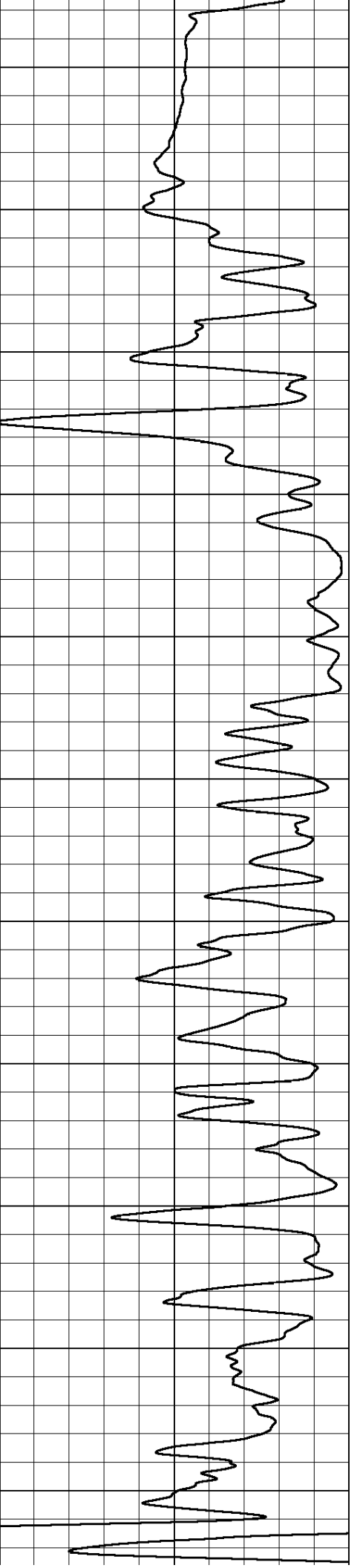
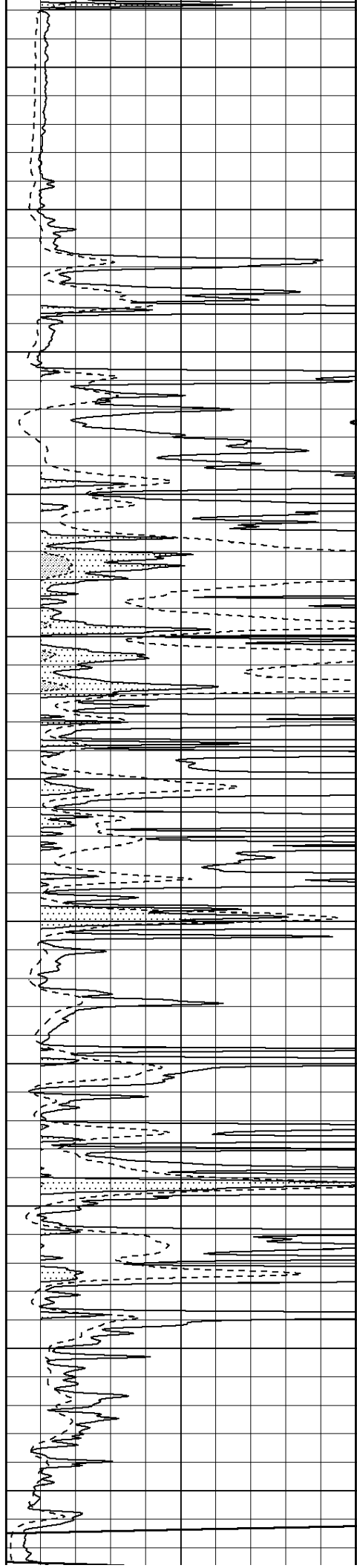
4200

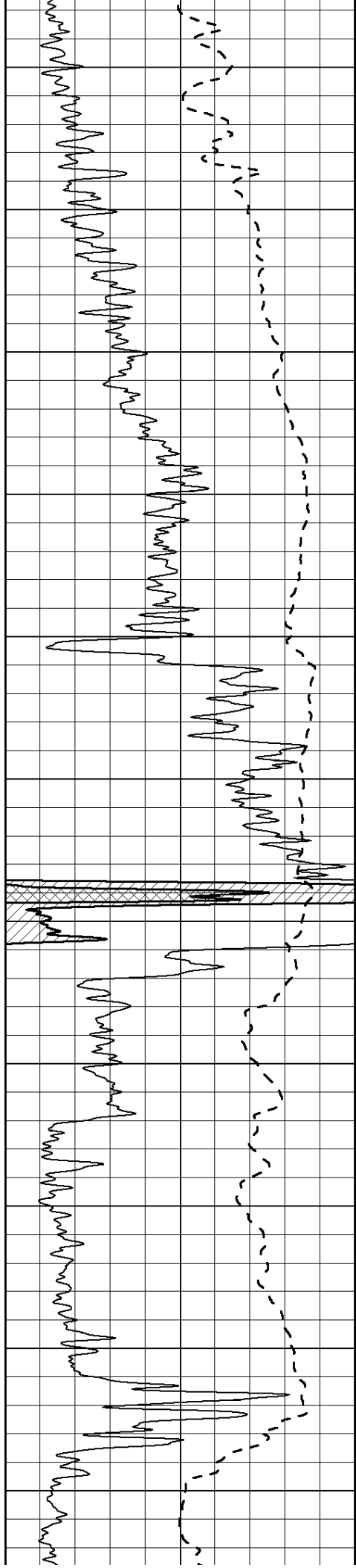
4250





4300
4350
4400
4450
4500
4550
4600
4650
4700
4750
4800





4850

4900

4950

5000

5050

5100

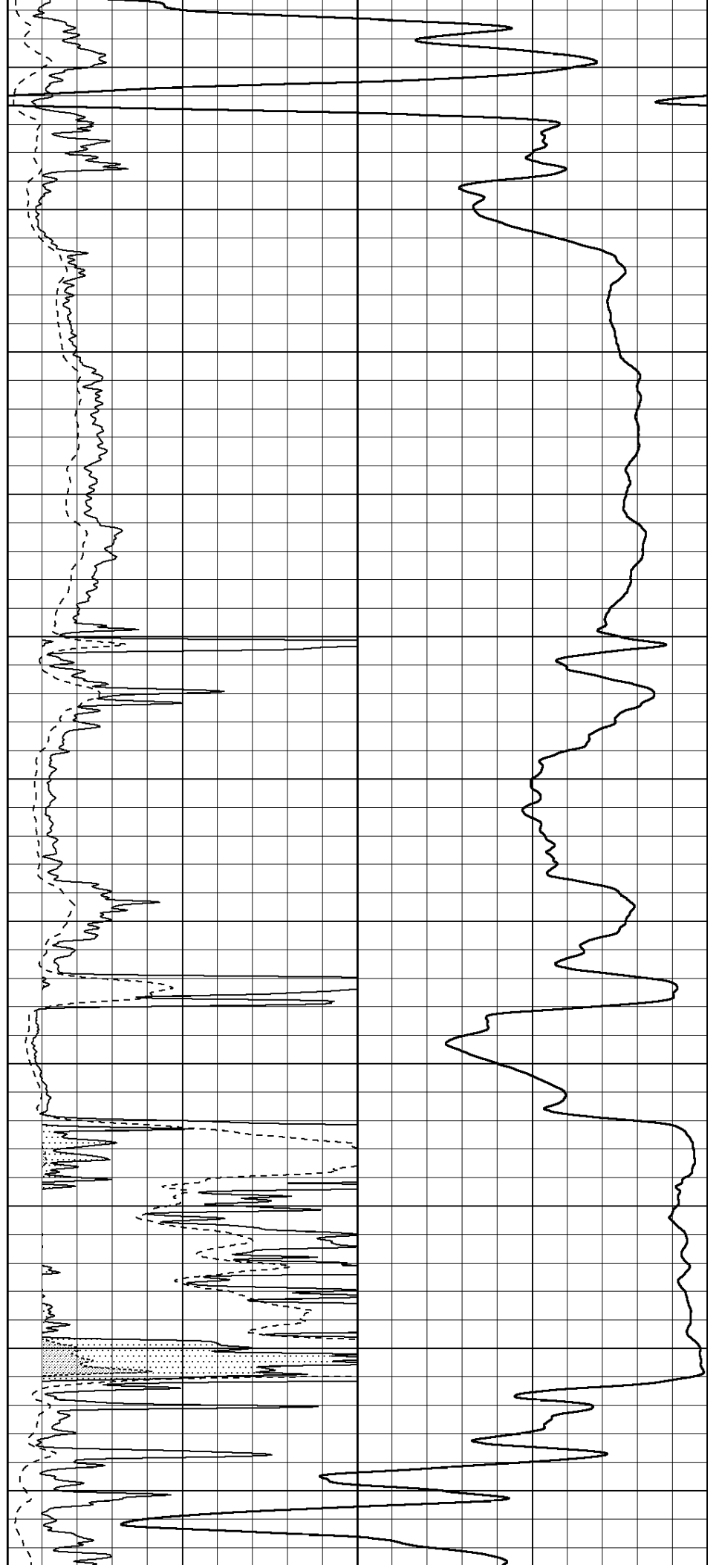
5150

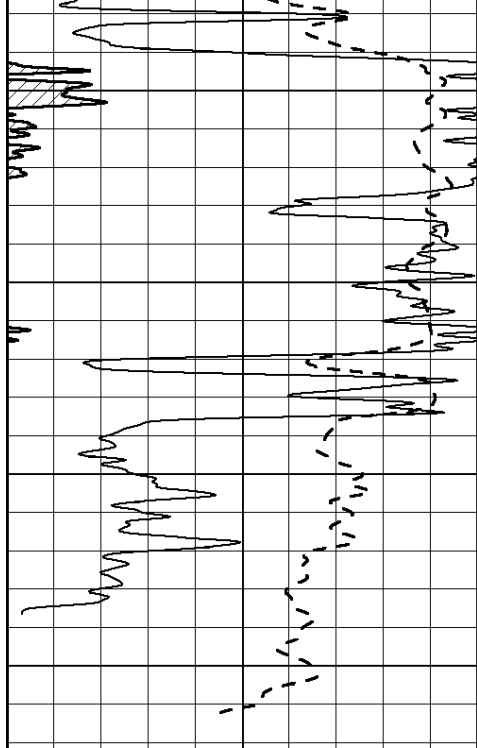
5200

5250

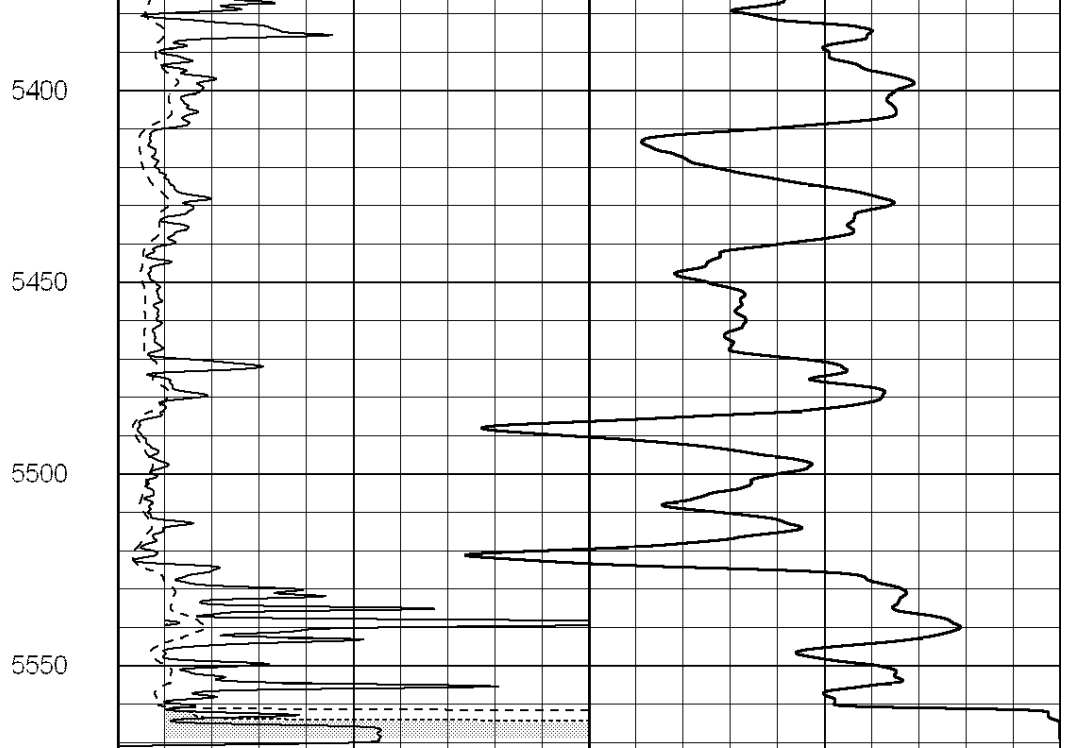
5300

5350





0 Gamma Ray (GAPI) 150
 -100 SP (mV) 100



0 RLL3 (Ohm-m) 50
 0 RILD (Ohm-m) 50
 1000 CILD (mmho/m) 0
 50 RILD X10 (Ohm-m) 500
 50 RLL3 X10 (Ohm-m) 500



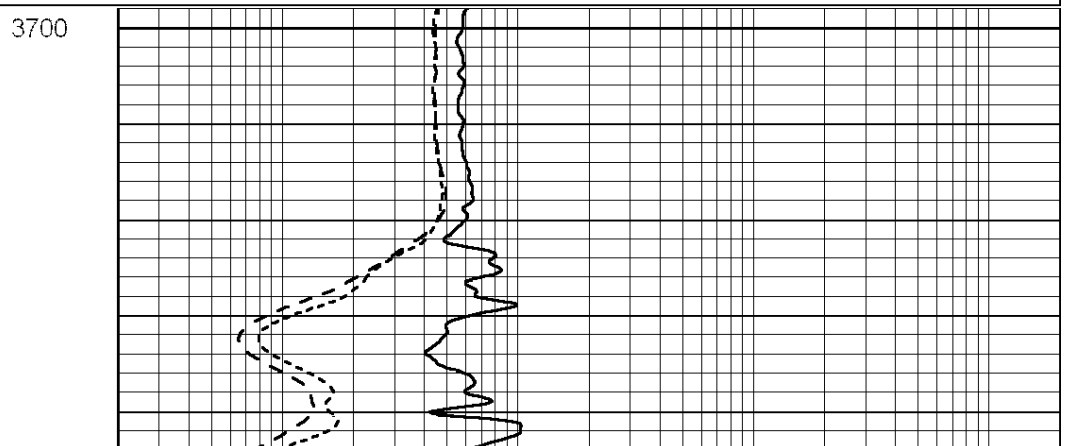
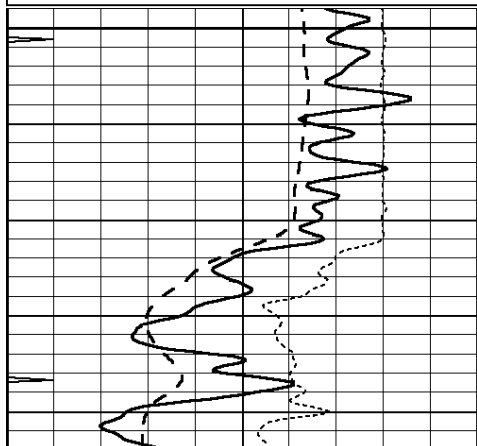
SUPERIOR
 Hays,
 Kansas

MAIN SECTION

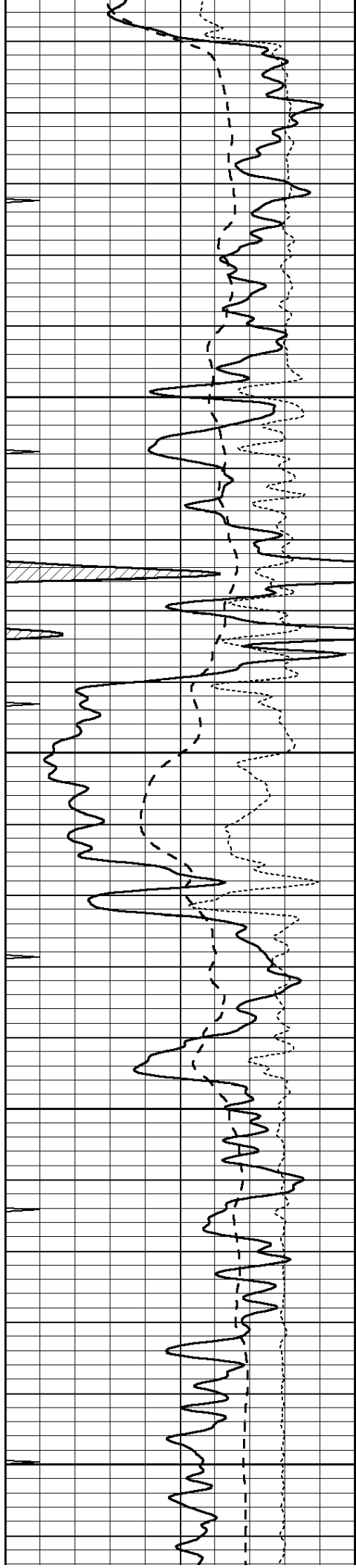
Database File: 006825pe.db
 Dataset Pathname: pass4.4
 Presentation Format: dil
 Dataset Creation: Wed May 11 11:21:44 2011 by Calc Open-Cased 090629
 Charted by: Depth in Feet scaled 1:240

0 GAMMA RAY (GAPI) 150
 -100 SP (mV) 100
 -250 Rxo/Rt 50
 0 MINMK 10

0.2 SHALLOW GUARD (Ohm-m) 2000
 0.2 DEEP INDUCTION (Ohm-m) 2000
 0.2 MEDIUM INDUCTION (Ohm-m) 2000



3700



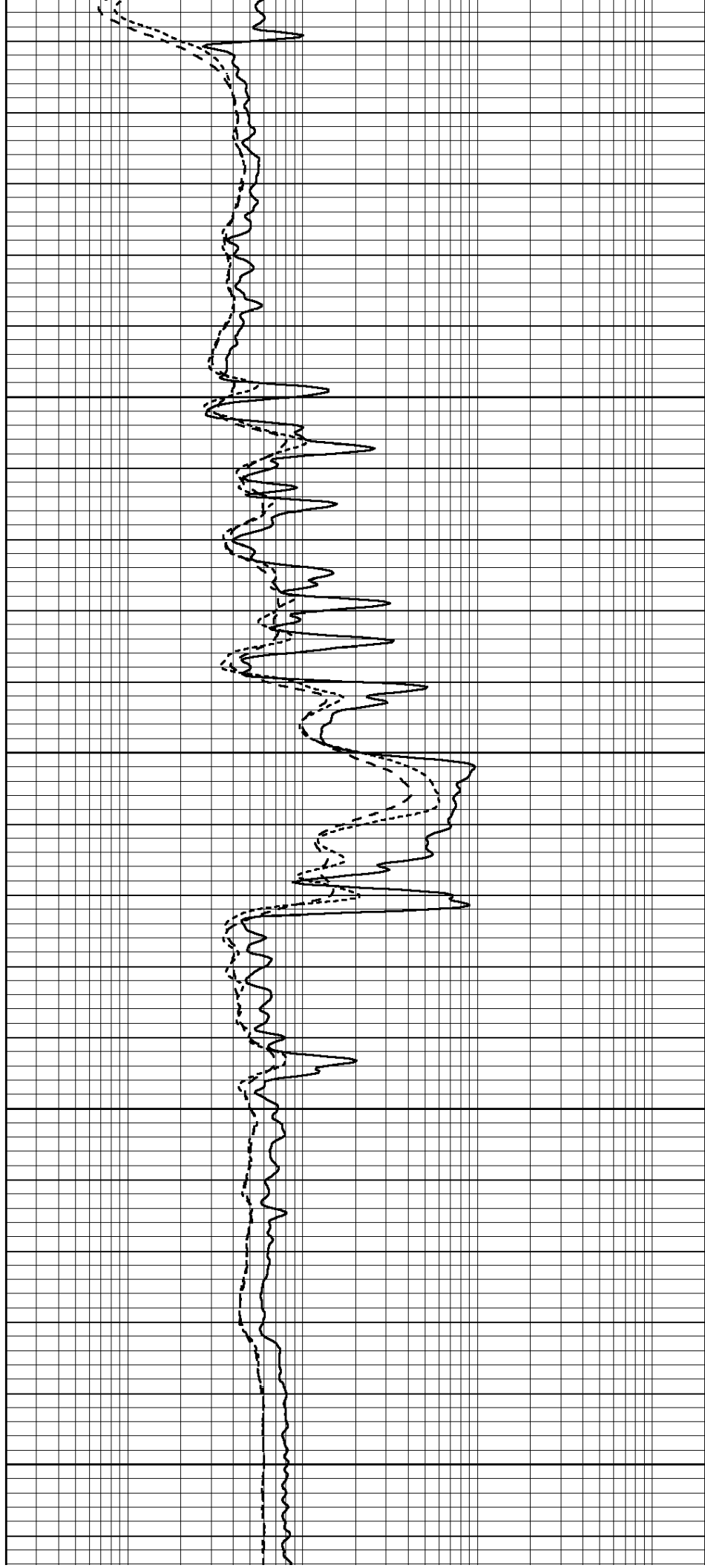
3750

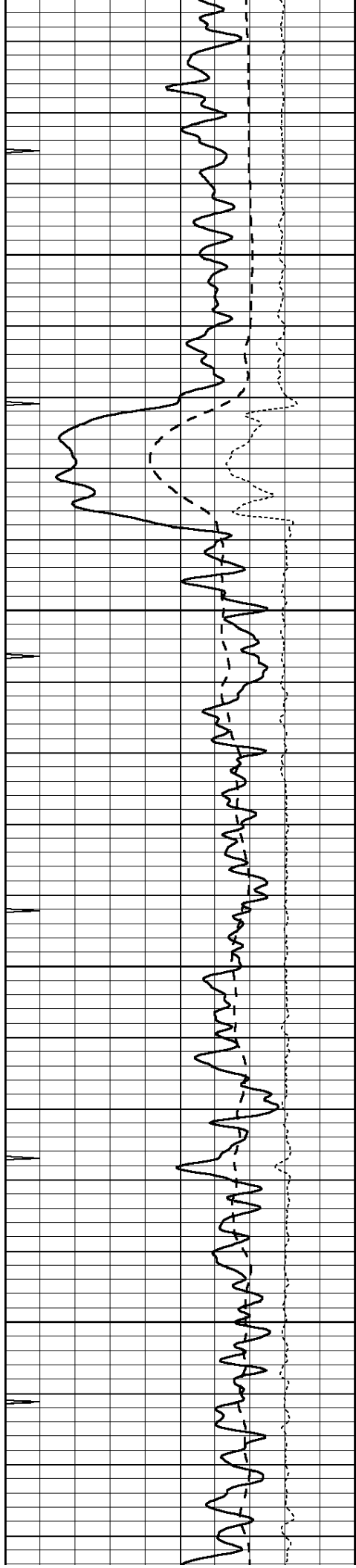
3800

3850

3900

3950



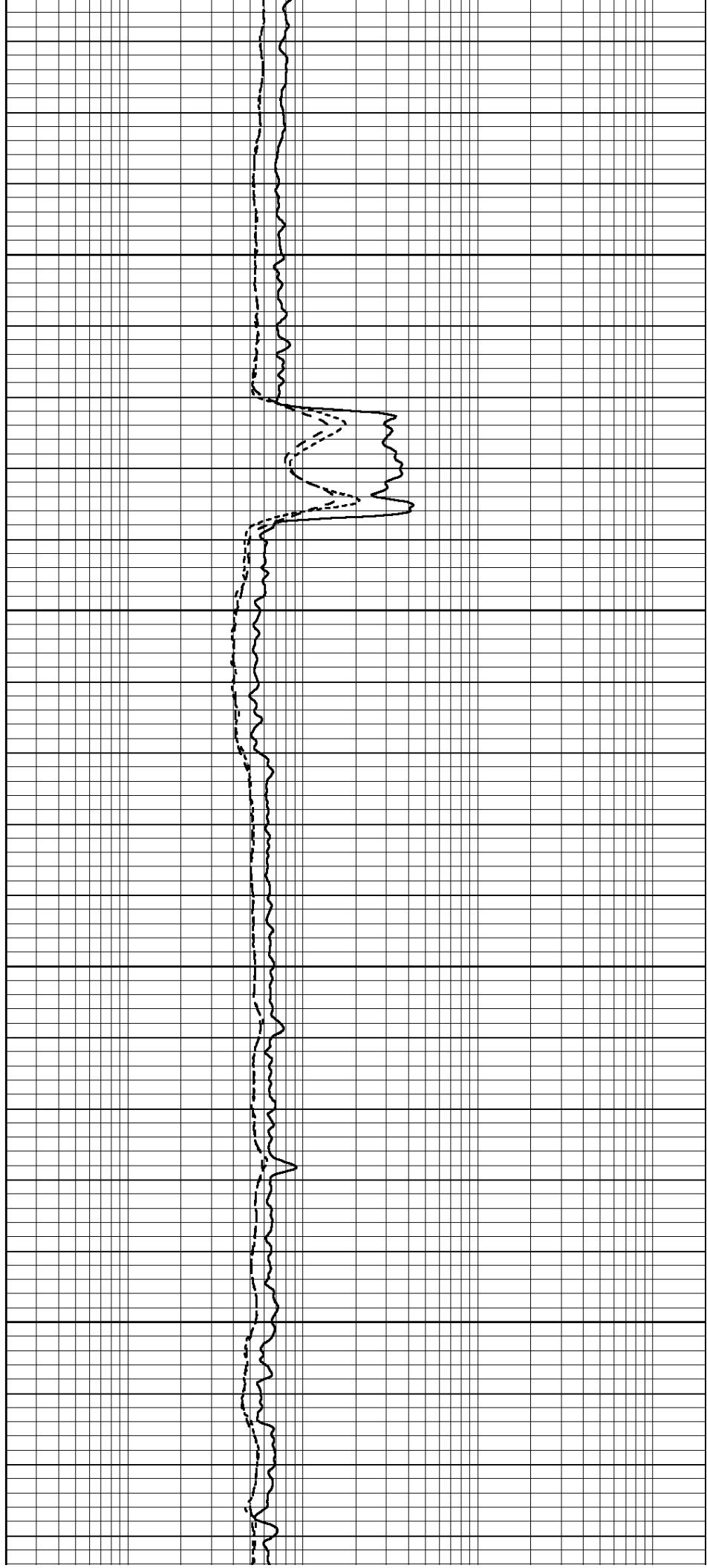


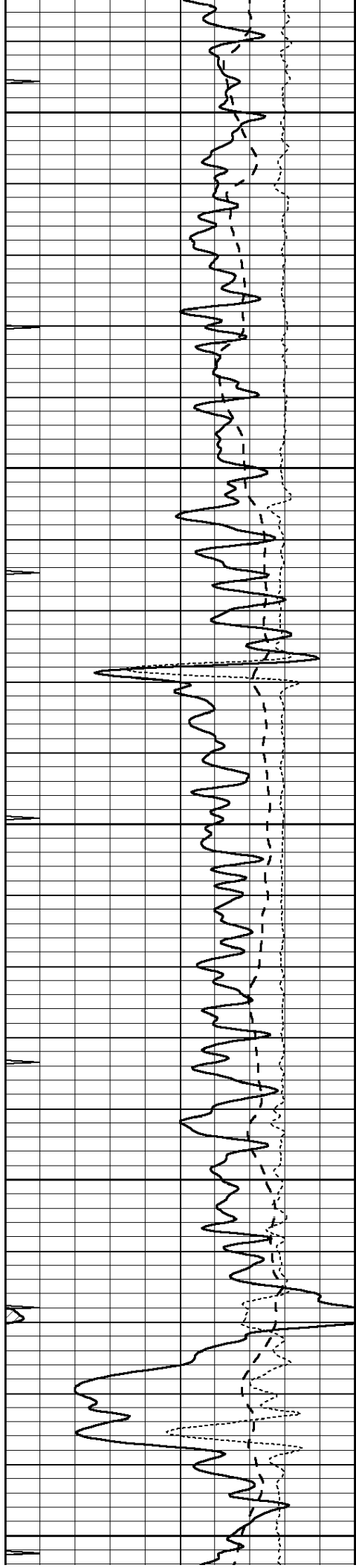
4000

4050

4100

4150





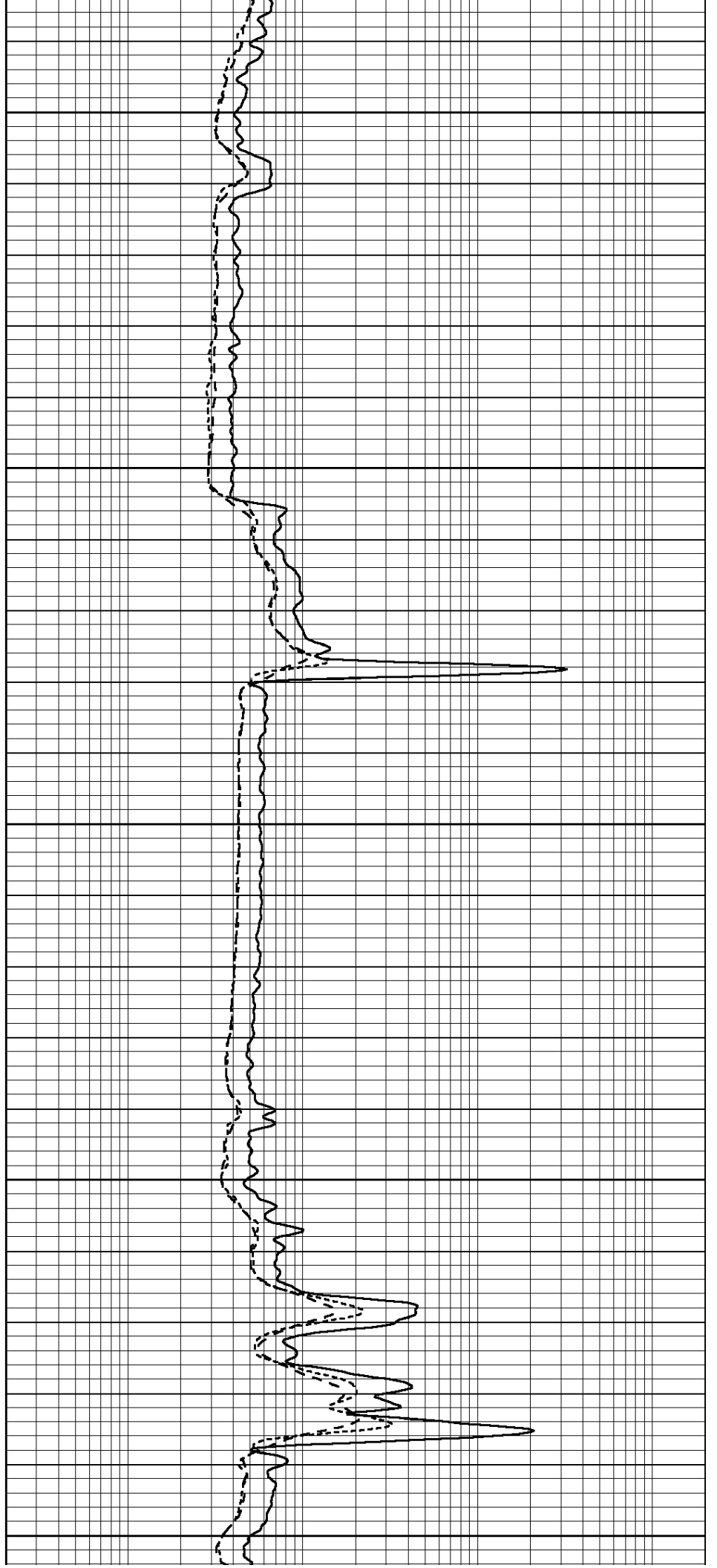
4200

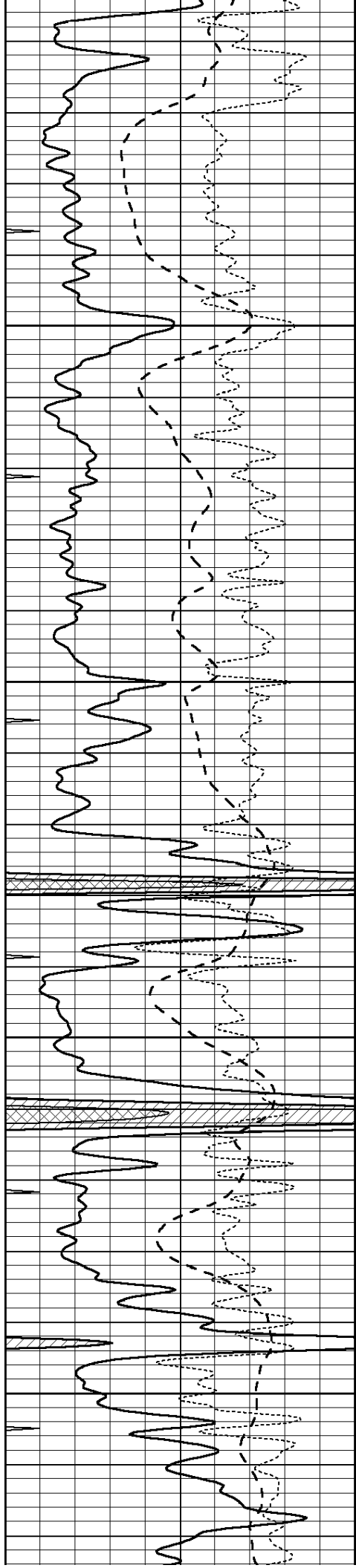
4250

4300

4350

4400



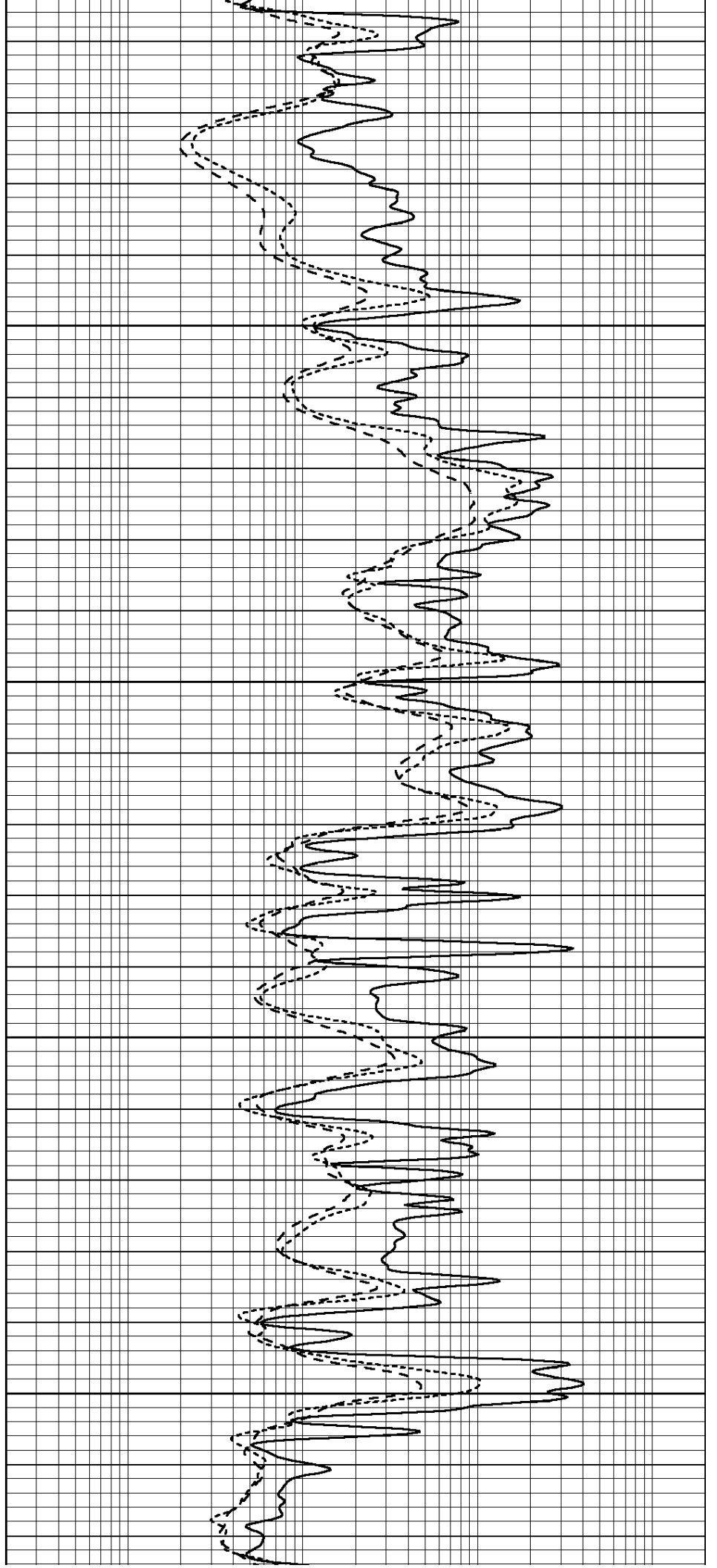


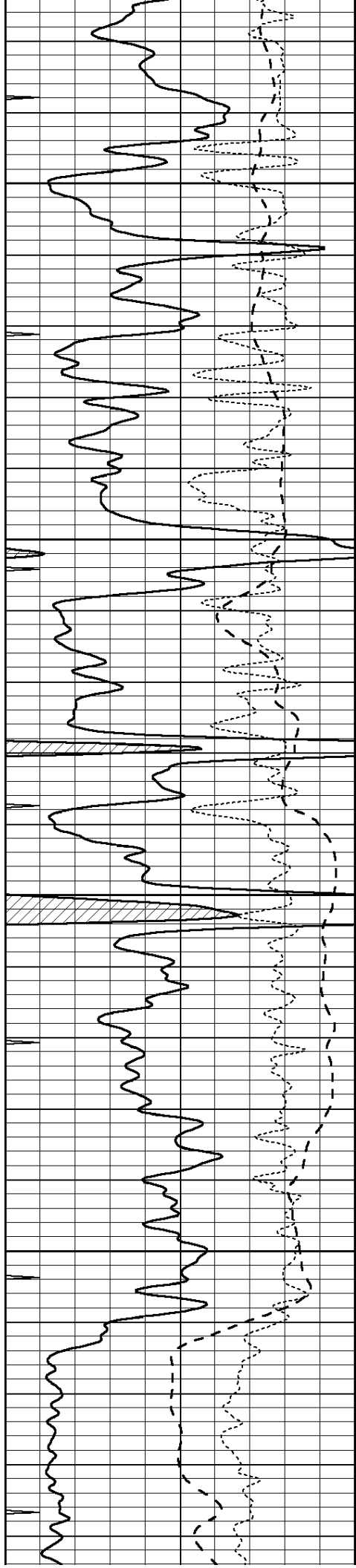
4450

4500

4550

4600



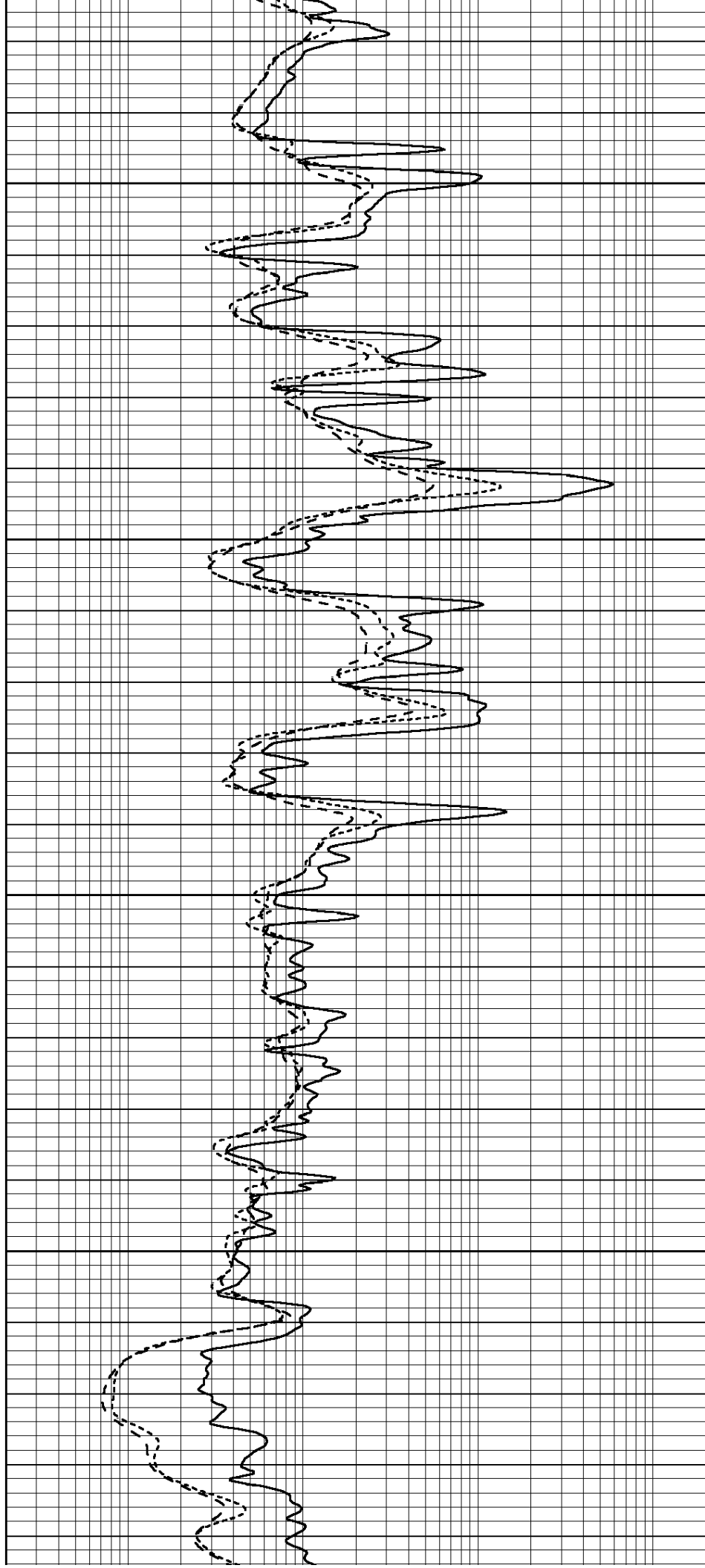


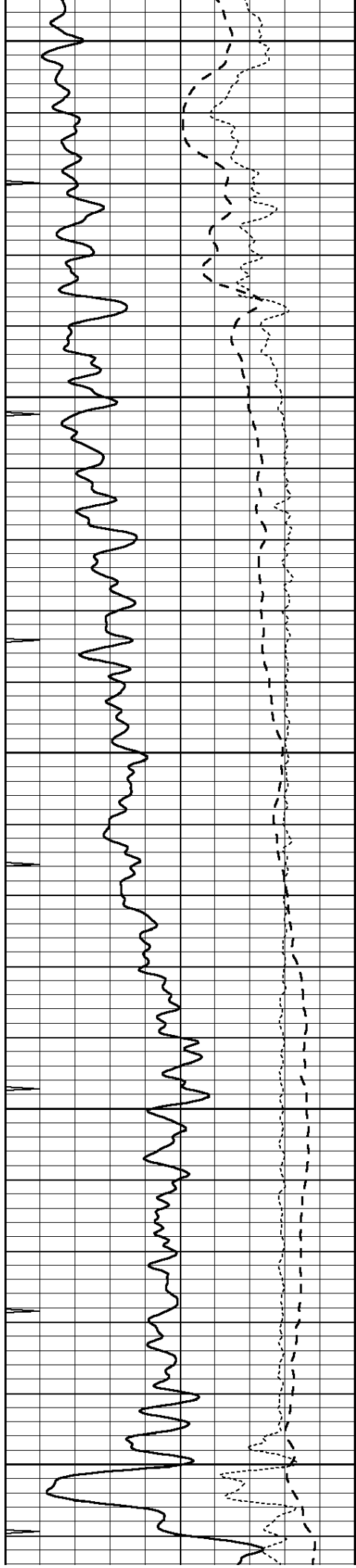
4650

4700

4750

4800





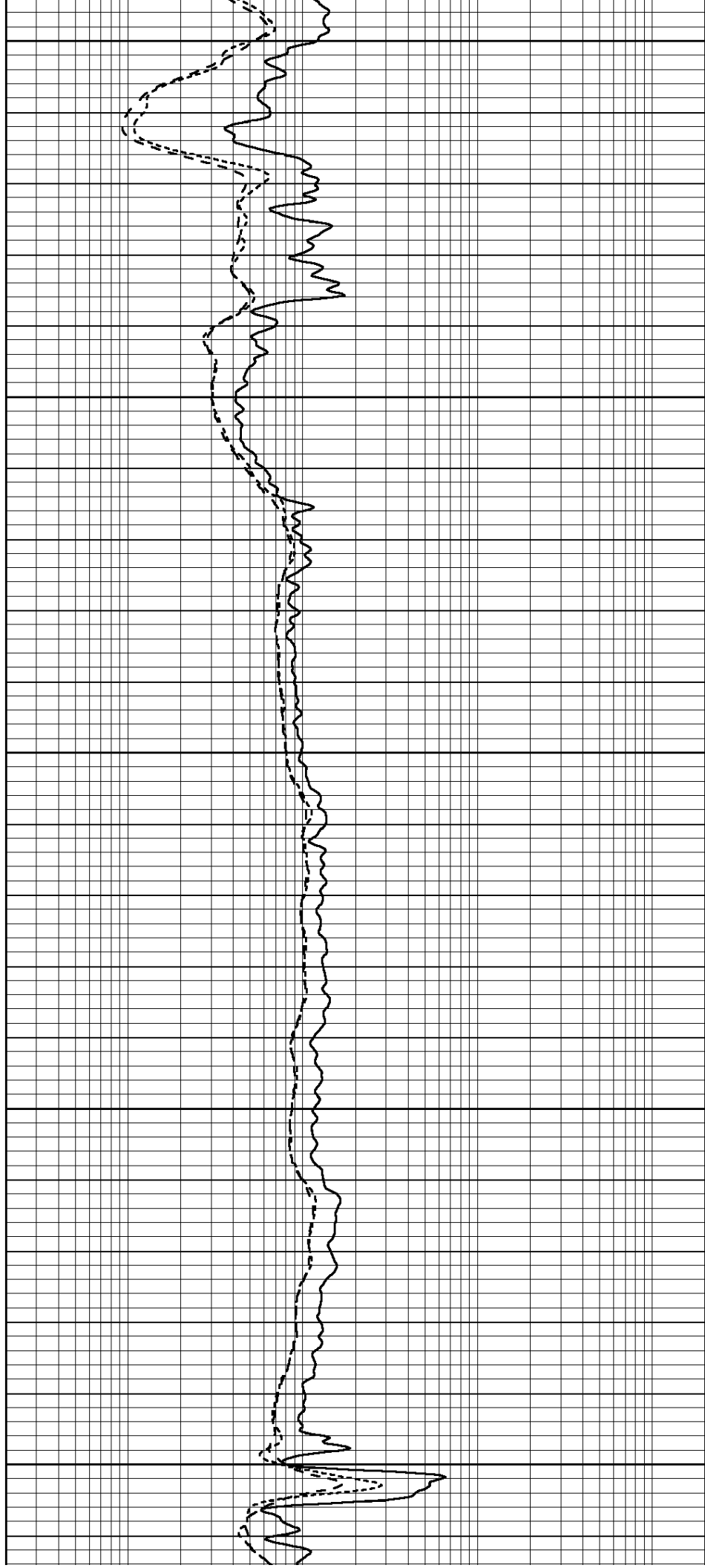
4850

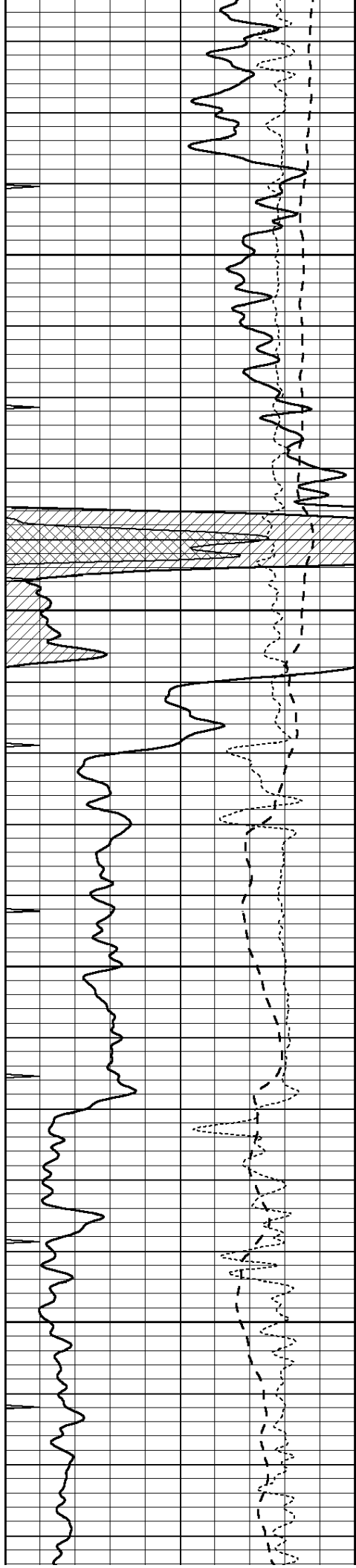
4900

4950

5000

5050



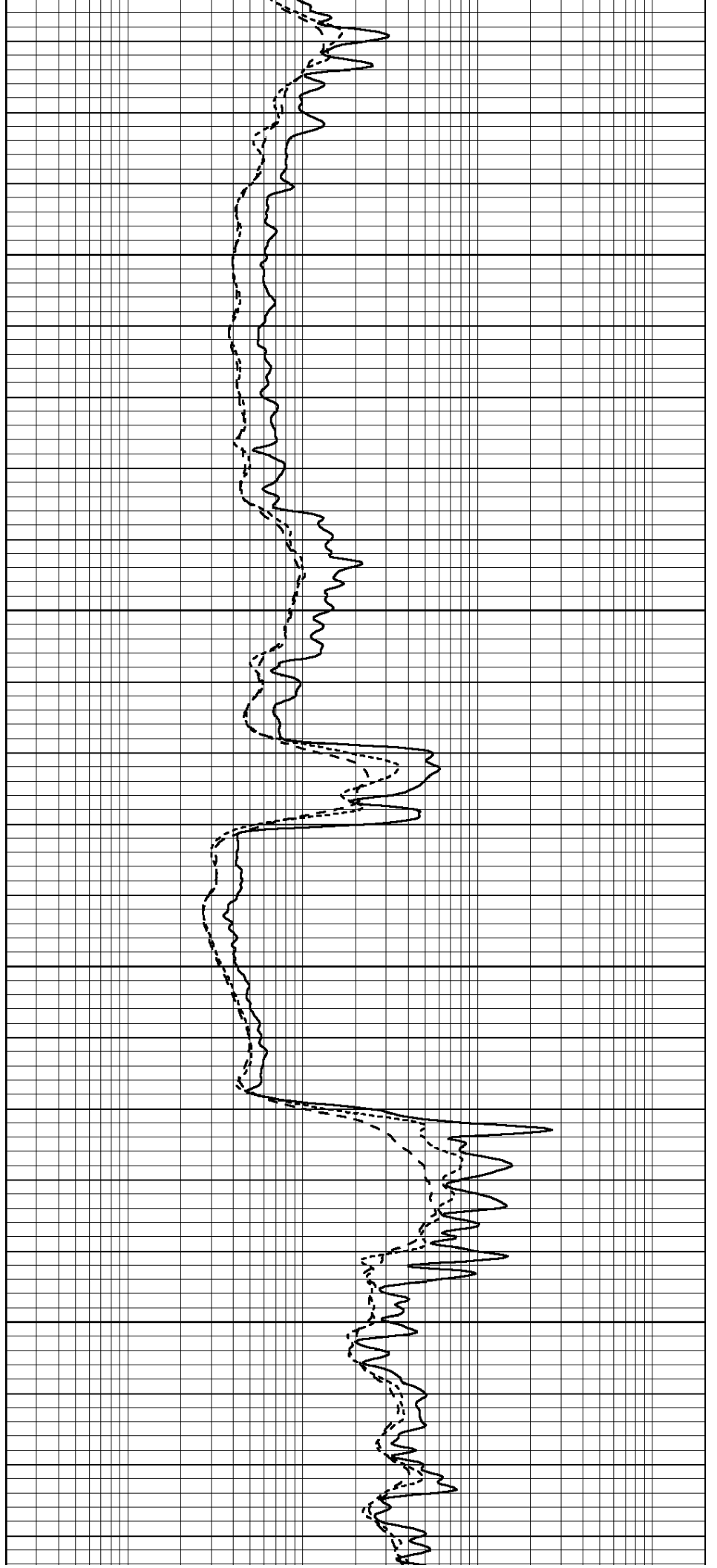


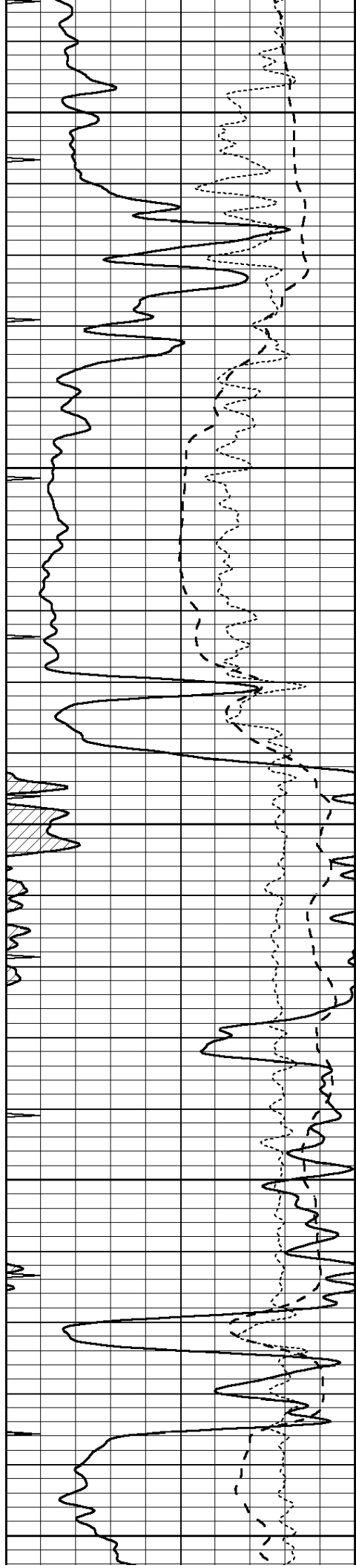
5100

5150

5200

5250





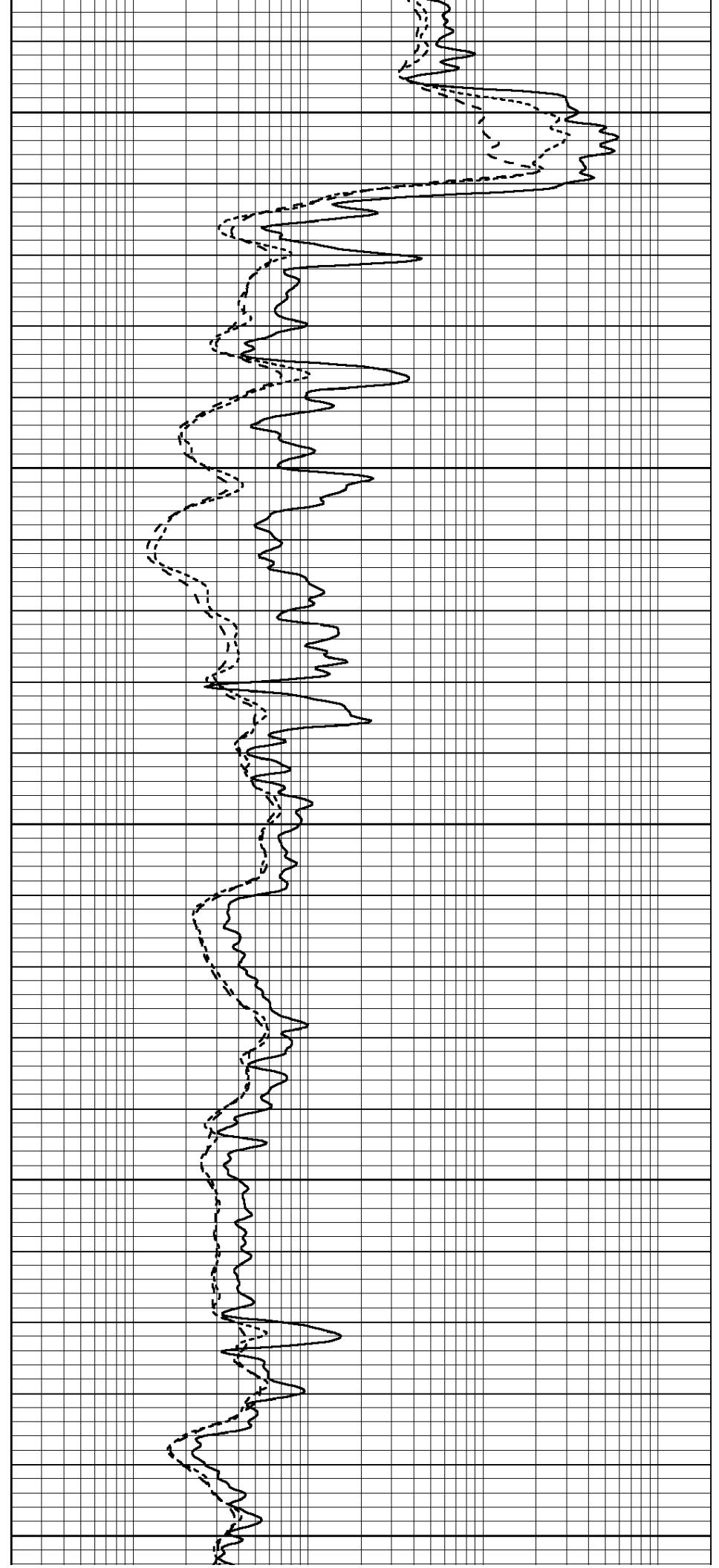
5300

5350

5400

5450

5500



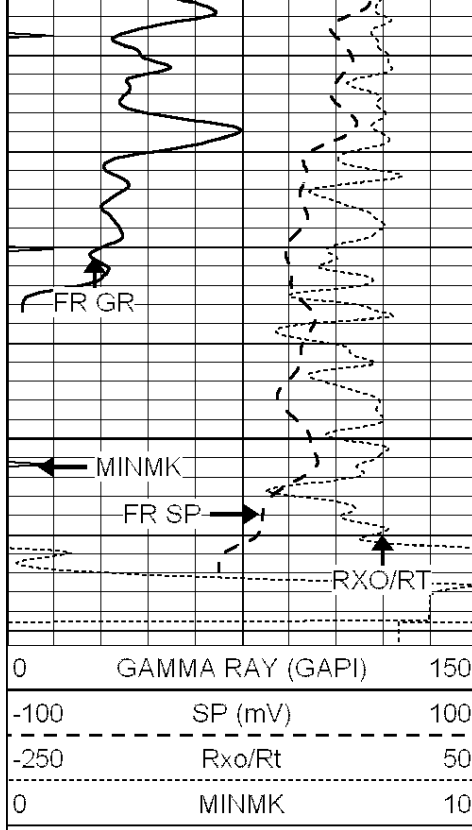
5300

5350

5400

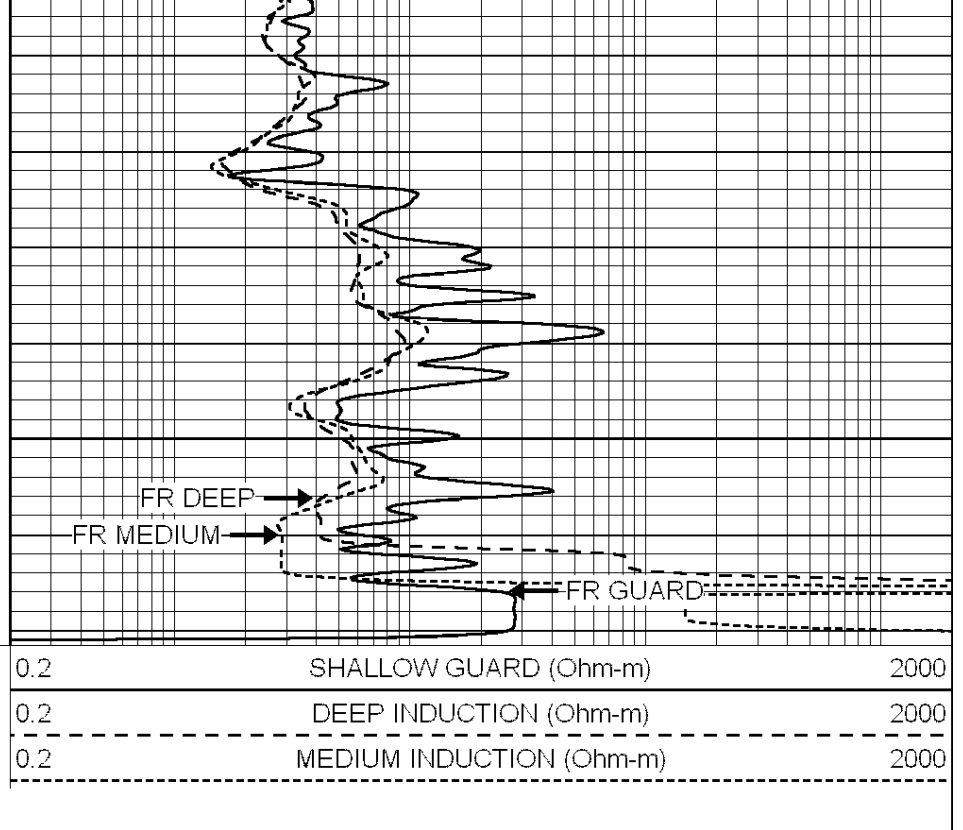
5450

5500



5550

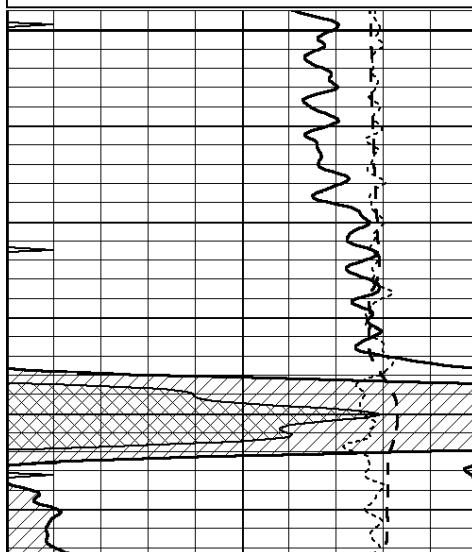
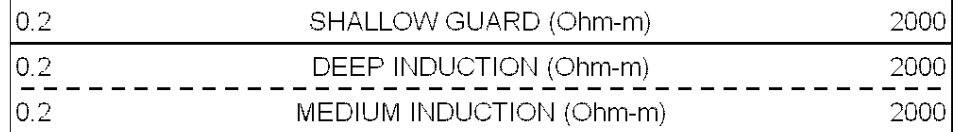
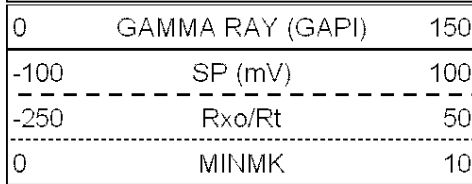
LTD 5568



SUPERIOR
Hays,
Kansas

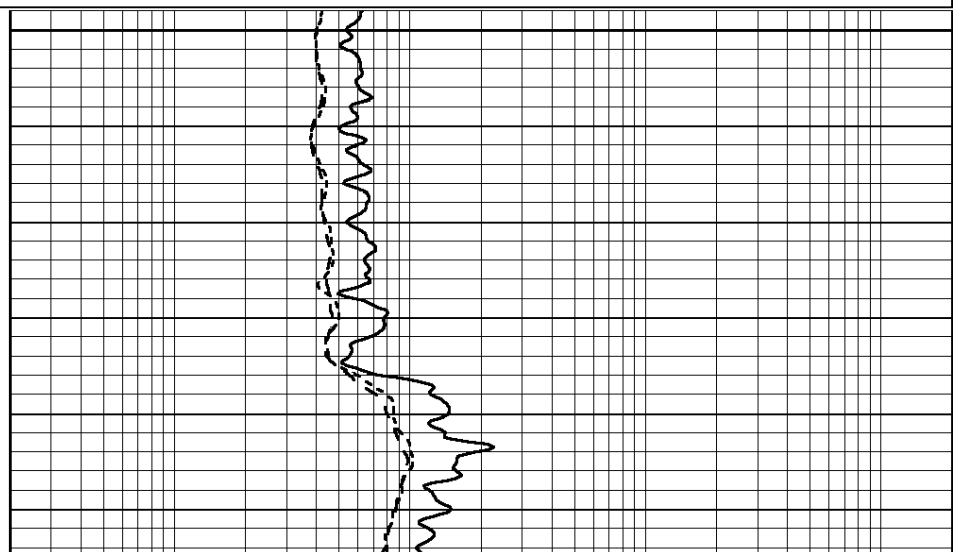
REPEAT SECTION

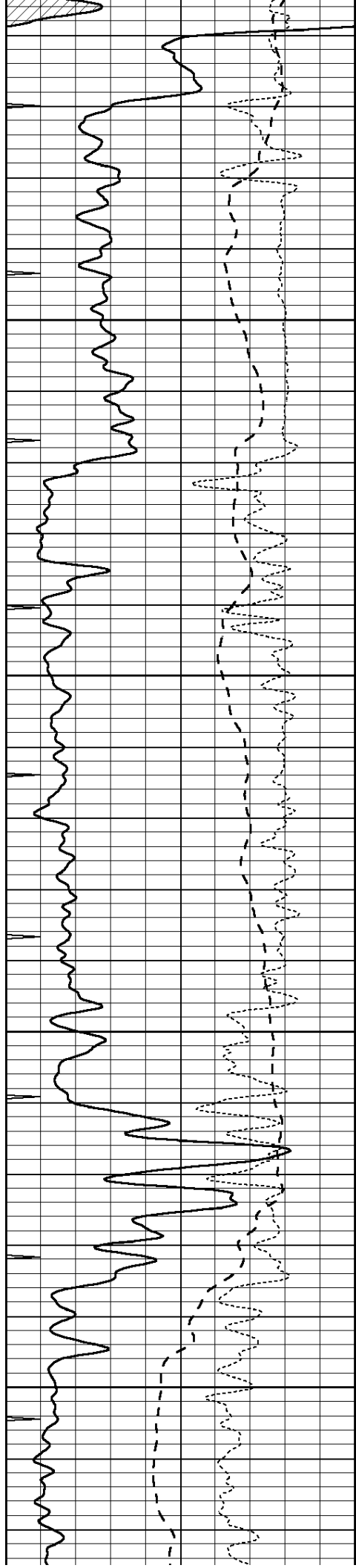
Database File: 006825pe.db
 Dataset Pathname: pass3.6
 Presentation Format: dil
 Dataset Creation: Wed May 11 10:52:59 2011 by Calc Open-Cased 090629
 Charted by: Depth in Feet scaled 1:240



5100

5150



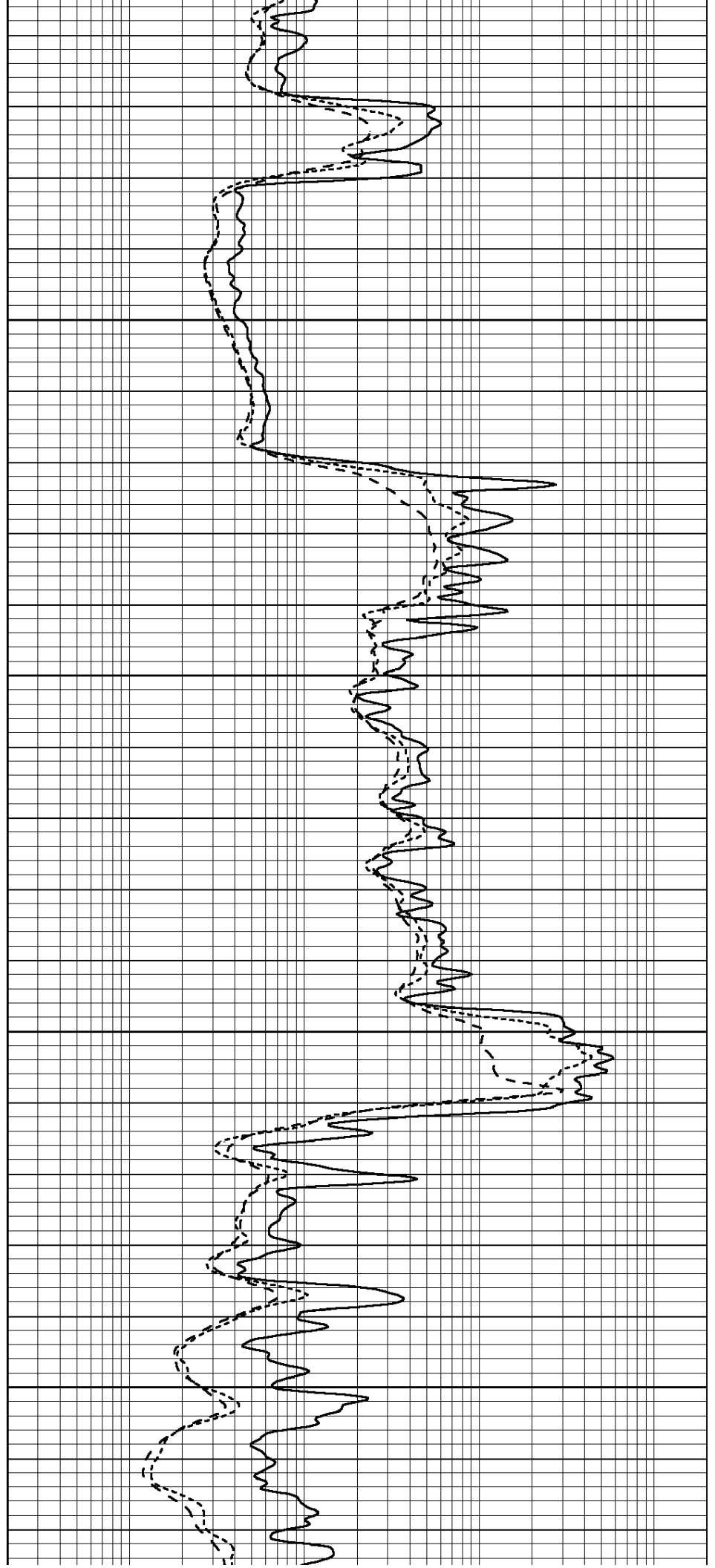


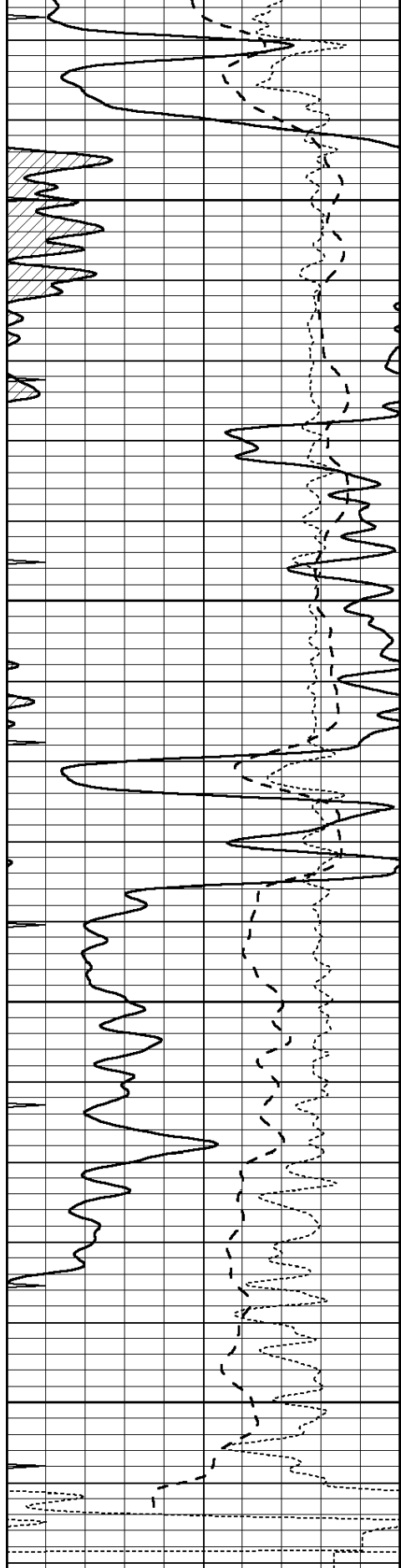
5200

5250

5300

5350





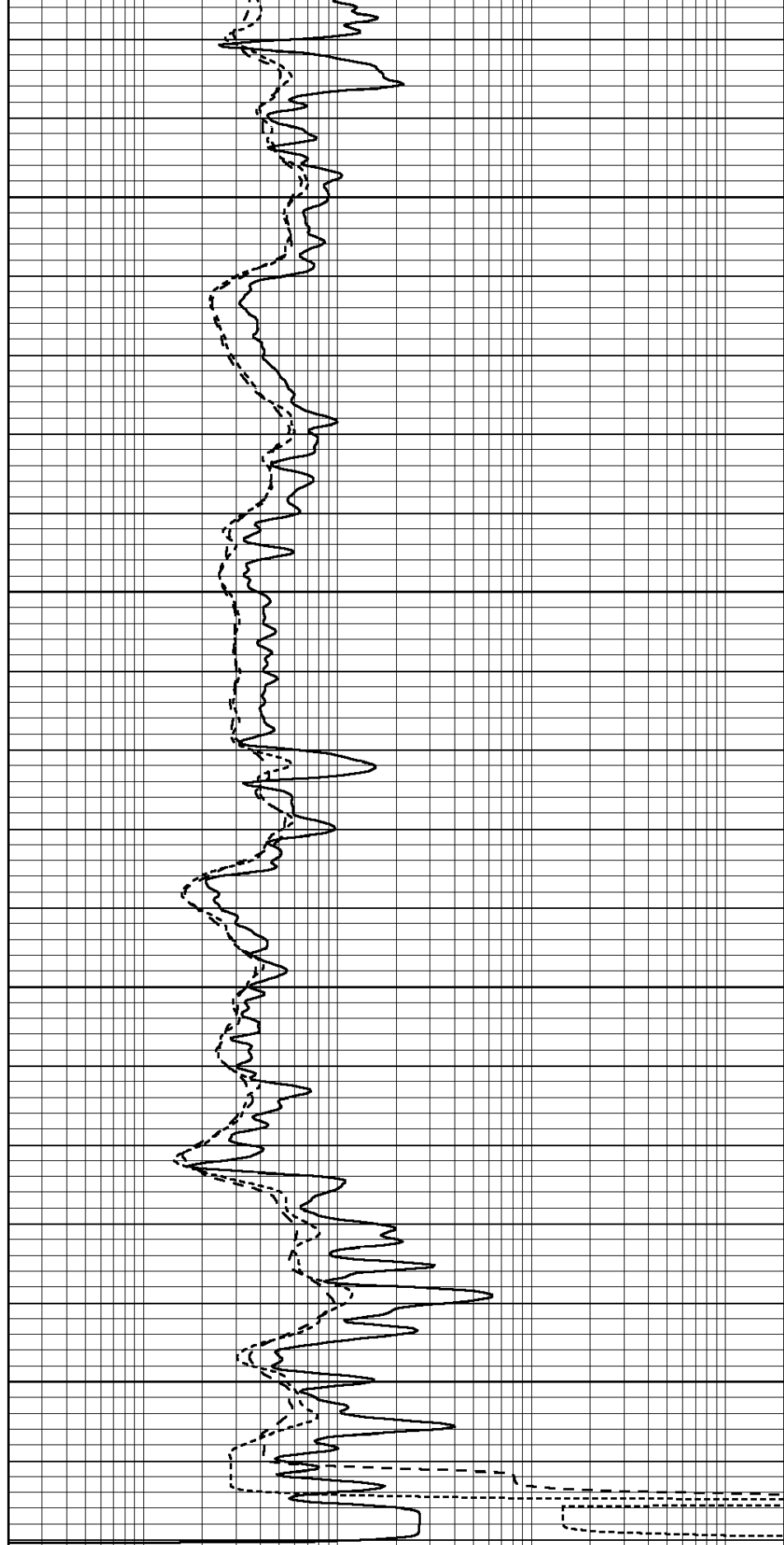
0	GAMMA RAY (GAPI)	150
-100	SP (mV)	100
-250	Rxo/Rt	50
0	MINMK	10

5400

5450

5500

5550



0.2	SHALLOW GUARD (Ohm-m)	2000
0.2	DEEP INDUCTION (Ohm-m)	2000
0.2	MEDIUM INDUCTION (Ohm-m)	2000

Calibration Report

Database File: 006825pe.db
 Dataset Pathname: pass4.4
 Dataset Creation: Wed May 11 11:21:44 2011 by Calc Open-Cased 090629

Dual Induction Calibration Report

Serial-Model: DIL3-GEAR
 Performed: Wed May 11 09:39:52 2011

Loop:	Readings			References			Results	
	Air	Loop		Air	Loop		m	b
Deep	0.011	0.656	V	0.000	400.000	mmho/m	640.000	0.000
Medium	0.013	0.740	V	0.000	462.500	mmho/m	700.000	-12.000
Internal:	Zero	Cal		Zero	Cal		m	b
Deep	0.002	0.645	V	0.000	400.000	mmho/m	622.059	-1.071
Medium	0.007	0.740	V	0.000	462.500	mmho/m	631.393	-4.555

Litho Density Calibration Report
 Serial: 003N Model: PRB
 Performed Tue Sep 08 14:14:44 2009

Litho Density Calibration

	Background	Magnesium	Aluminum	Sandstone	
Window 1	2042.6	12312.8	4225.8	13758.4	cps
Window 2	1855.8	10134.7	3624.2	11113.1	cps
Window 3	1639.4	6760.2	2716.3	7260.3	cps
Window 4	466.4	469.2	466.1	476.5	cps
Long Space	0.0	8278.9	1768.4	9257.4	cps
Short Space	2.2	2377.3	1544.1	2574.2	cps
Rho		1.7100	2.5900	1.3800	g/cc
Pe			2.5700	1.5500	
Rib Angle	: 44.4	Rib Slope	: 0.979	Density/Spine Ratio	: 0.549
Spine Angle	: 74.4	Spine Slope	: 3.577	Spine Intercept	: -18.8

Caliper

	Readings	Reference
Low Ref	2.1	6.9
High Ref	4.4	14.0
	Gain: 3.1	Offset: 0.5

Compensated Neutron Calibration Report

Serial Number: NEU_4I
 Tool Model: G

CALIBRATION

Detector	Readings	Target	Normalization
Short Space	996.00 cps	1000.00 cps	1.0000
Long Space	977.00 cps	1000.00 cps	1.0000

Gamma Ray Calibration Report

Serial Number: GR4
 Tool Model: OPEN
 Performed: Wed May 11 09:40:12 2011

Calibrator Value:	200.0	GAPI
Background Reading:	0.0	cps
Calibrator Reading:	189.0	cps
Sensitivity:	1.8000	GAPI/cps