



SUPERIOR
Hays,
Kansas

SONIC
LOG

Company LOTUS OPERATING CO. LLC.
Well #2 MOLZ "L"
Field STANATHAN
County BARBER
State KANSAS

Company LOTUS OPERATING COMPANY, LLC.
Well #2 MOLZ "L"
Field STANATHAN
County BARBER State KANSAS

Location: API # : 15-007-23691-0000
660' FSL & 330' FEL

SEC 1 TWP 35S RGE 12W

Permanent Datum GROUND LEVEL Elevation 1399
Log Measured From KELLY BUSHING 13' A.G.L.
Drilling Measured From KELLY BUSHING

Other Services
CDL/CNL/PE
DIL/MEL

Elevation
K.B. 1412
D.F. 1410
G.L. 1399

Date	5/11/11
Run Number	TWO
Depth Driller	5567
Depth Logger	5568
Bottom Logged Interval	5555
Top Log Interval	3700
Casing Driller	10 3/4" @ 255'
Casing Logger	255
Bit Size	7 7/8"
Type Fluid in Hole	CHEMICAL MUD
Density / Viscosity	9.3/43
pH / Fluid Loss	9.0/10.0
Source of Sample	FLOWLINE
Rim @ Meas. Temp	.650 @ 75F
Rmf @ Meas. Temp	.488 @ 75F
Rmc @ Meas. Temp	.780 @ 75F
Source of Rmf / Rmc	MEASUREMENT
Rim @ BHT	.375 @ 130F
Time Circulation Stopped	5.5 HOURS
Time Logger on Bottom	9:15 A.M.
Maximum Recorded Temperature	130F
Equipment Number	0836
Location	HAYS, KANSAS
Recorded By	JEFF LUEBBERS
Witnessed By	TIM HELLMAN

<<< Fold Here >>>

All interpretations are opinions based on inferences from electrical or other measurements and we cannot and do not guarantee the accuracy or correctness of any interpretation, and we shall not, except in the case of gross or willful negligence on our part, be liable or responsible for any loss, costs, damages, or expenses incurred or sustained by anyone resulting from any interpretation made by any of our officers, agents or employees. These interpretations are also subject to our general terms and conditions set out in our current Price Schedule.

Comments

THANK YOU FOR USING SUPERIOR WELL SERVICE HAYS, KANSAS (785) 628-6395
DIRECTIONS
MEDICINE LODGE, KS. (JUNCTION OF HWY 160 & 281) 17 1/2 S. ON HWY 281 W. INTO BEFORE HWY 2

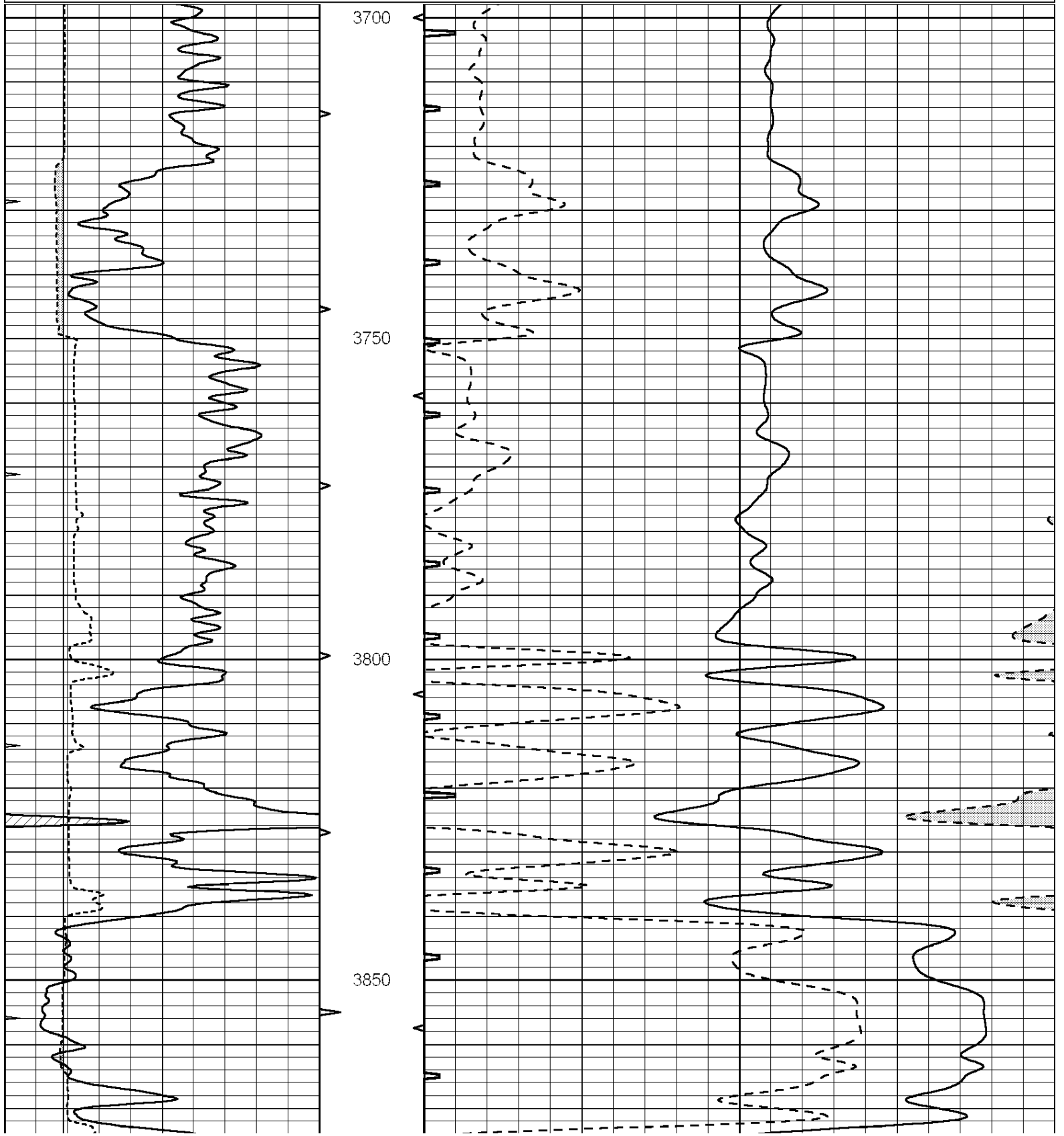


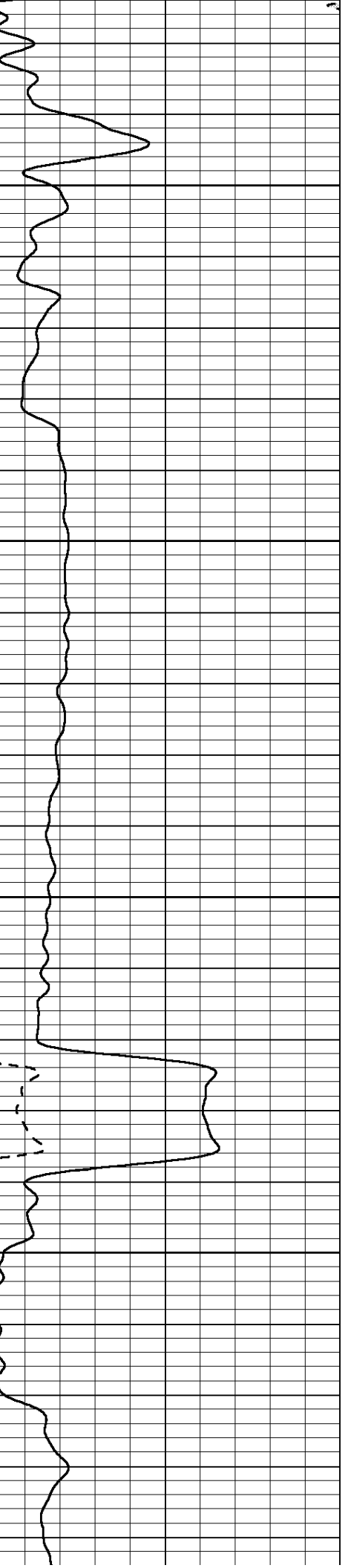
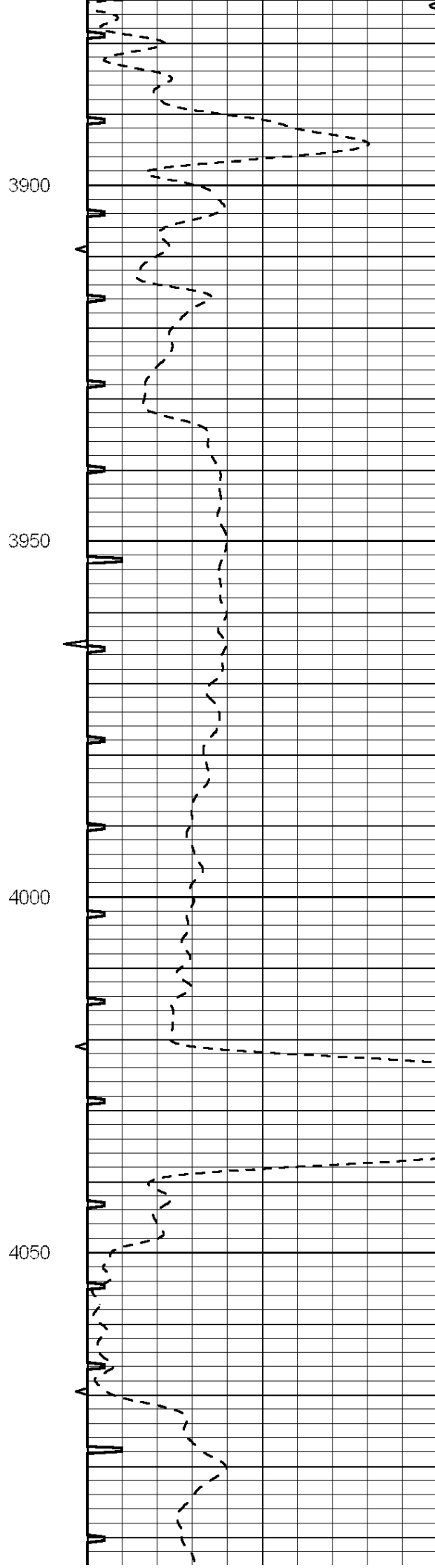
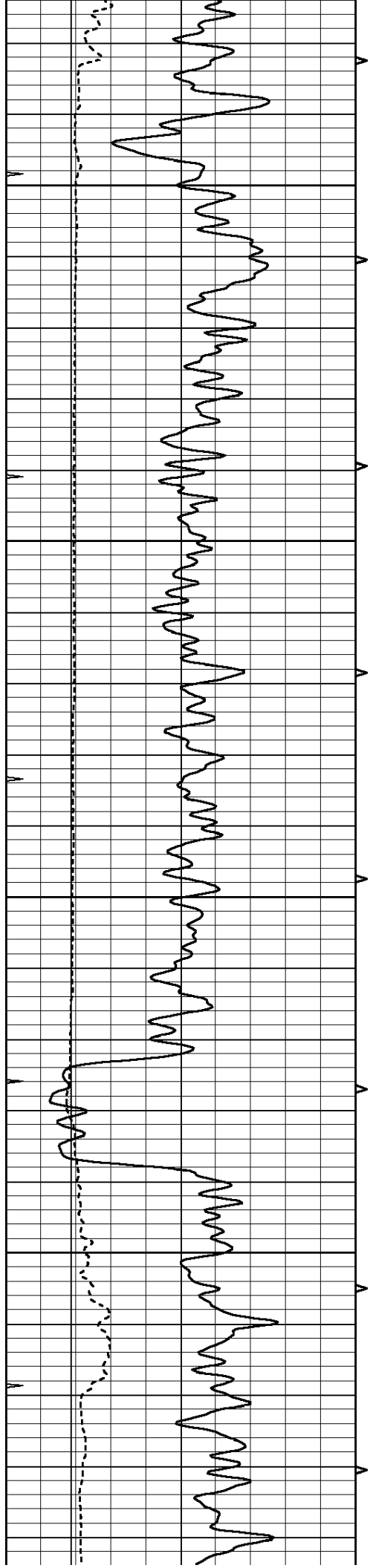
SUPERIOR
Hays,
Kansas

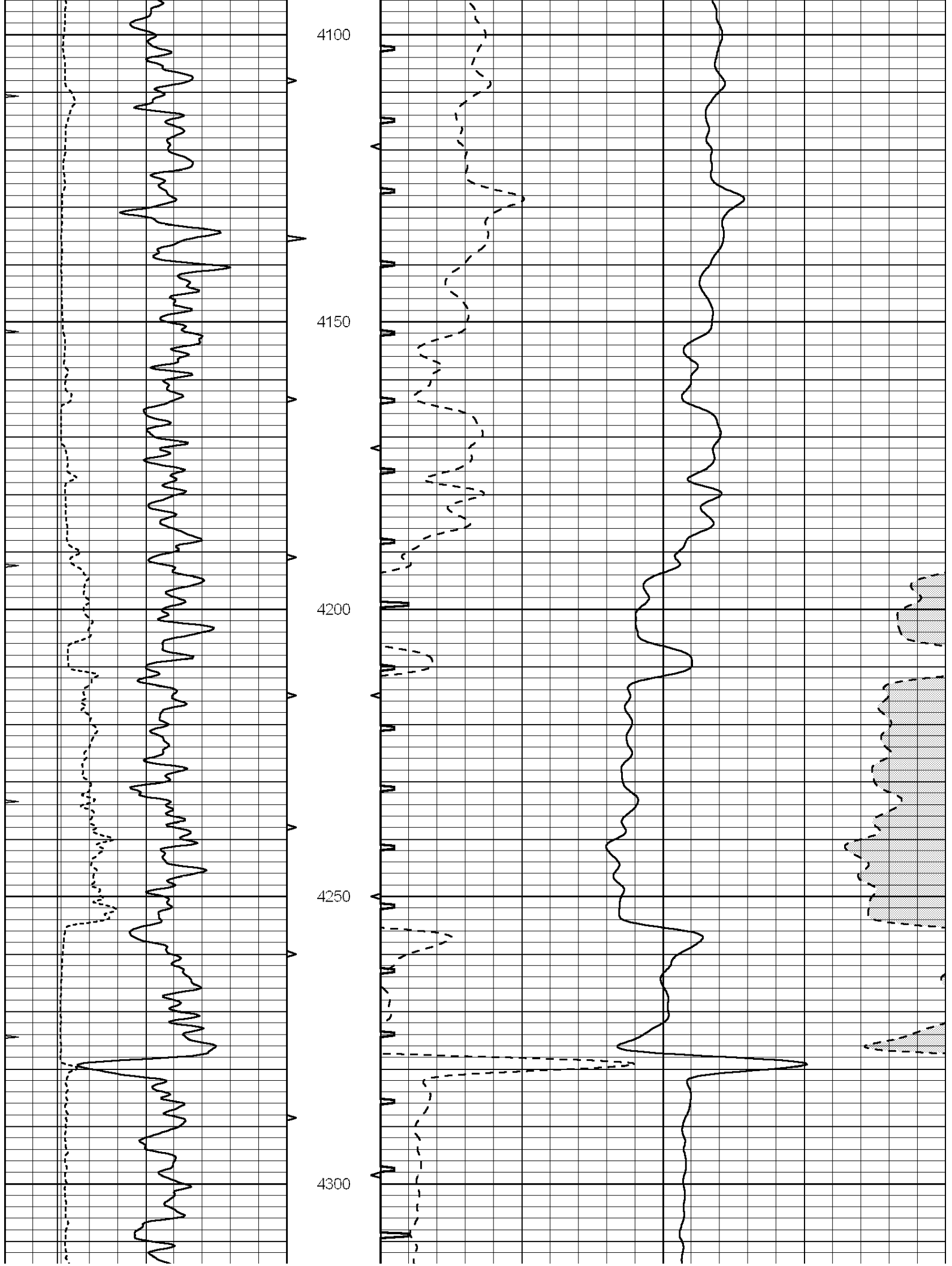
MAIN SECTION

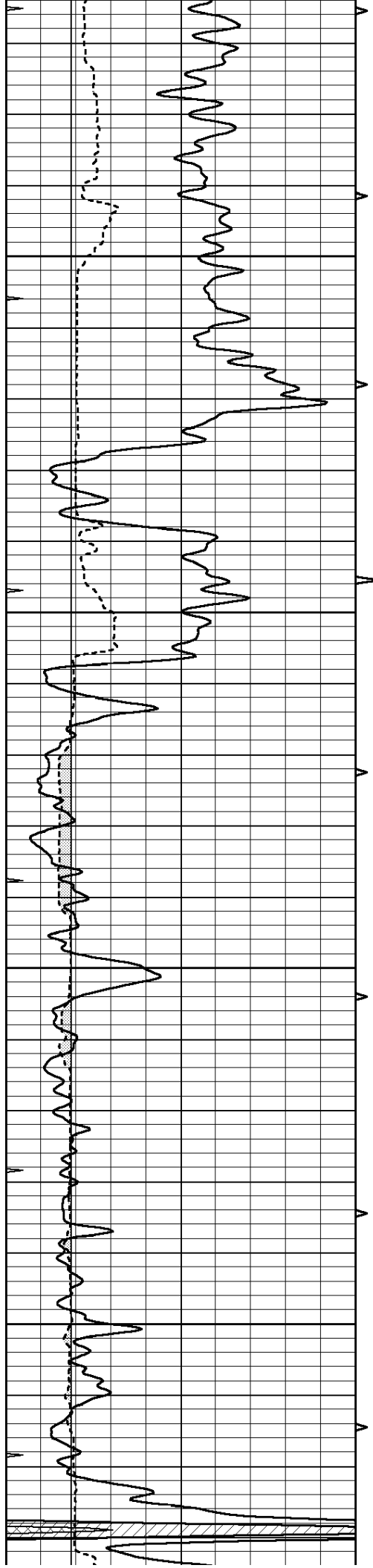
Database File: 006825pe.db
 Dataset Pathname: pass7.3
 Presentation Format: slt
 Dataset Creation: Wed May 11 13:24:14 2011 by Calc Open-Cased 090629
 Charted by: Depth in Feet scaled 1:240

0	GAMMA RAY (GAPI)	150	ABHV	140	DELTA TIME (usec/ft)	40	
6	CALIPER (in)	16	10 (ft3)	0	30	SONIC POROSITY (pu)	-10
0	MINMK	20	TBHV	0	ITT (msec)	20	
			0 (ft3)	10			







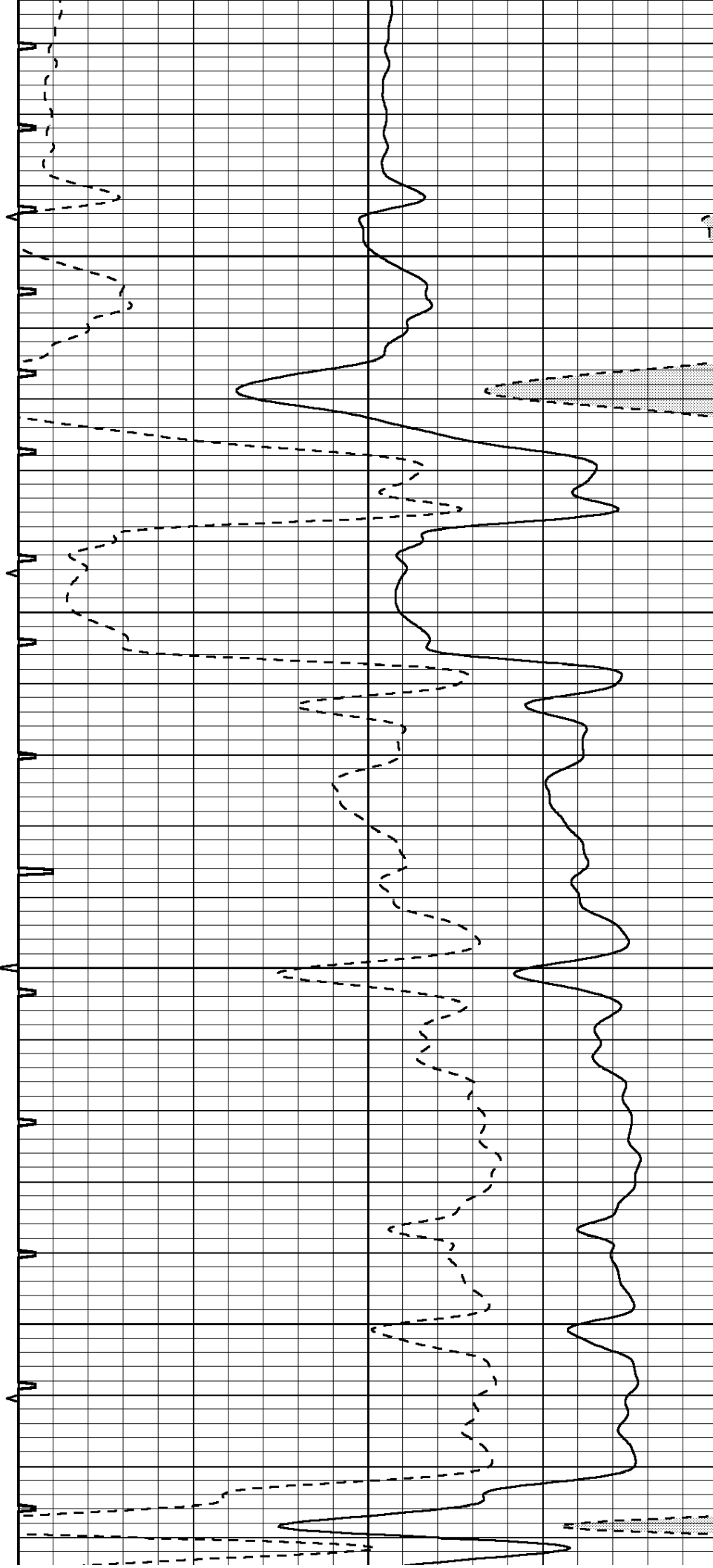


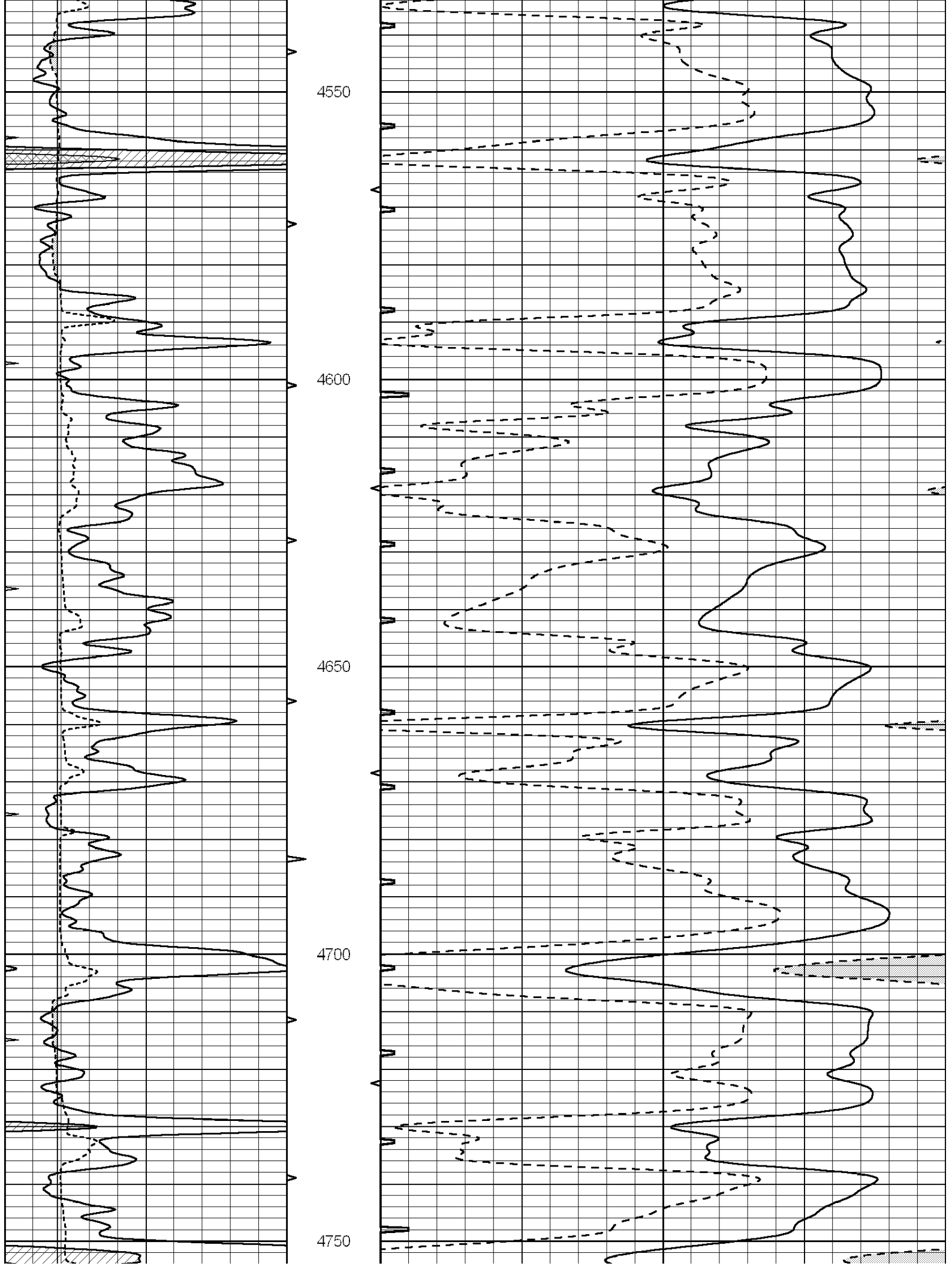
4350

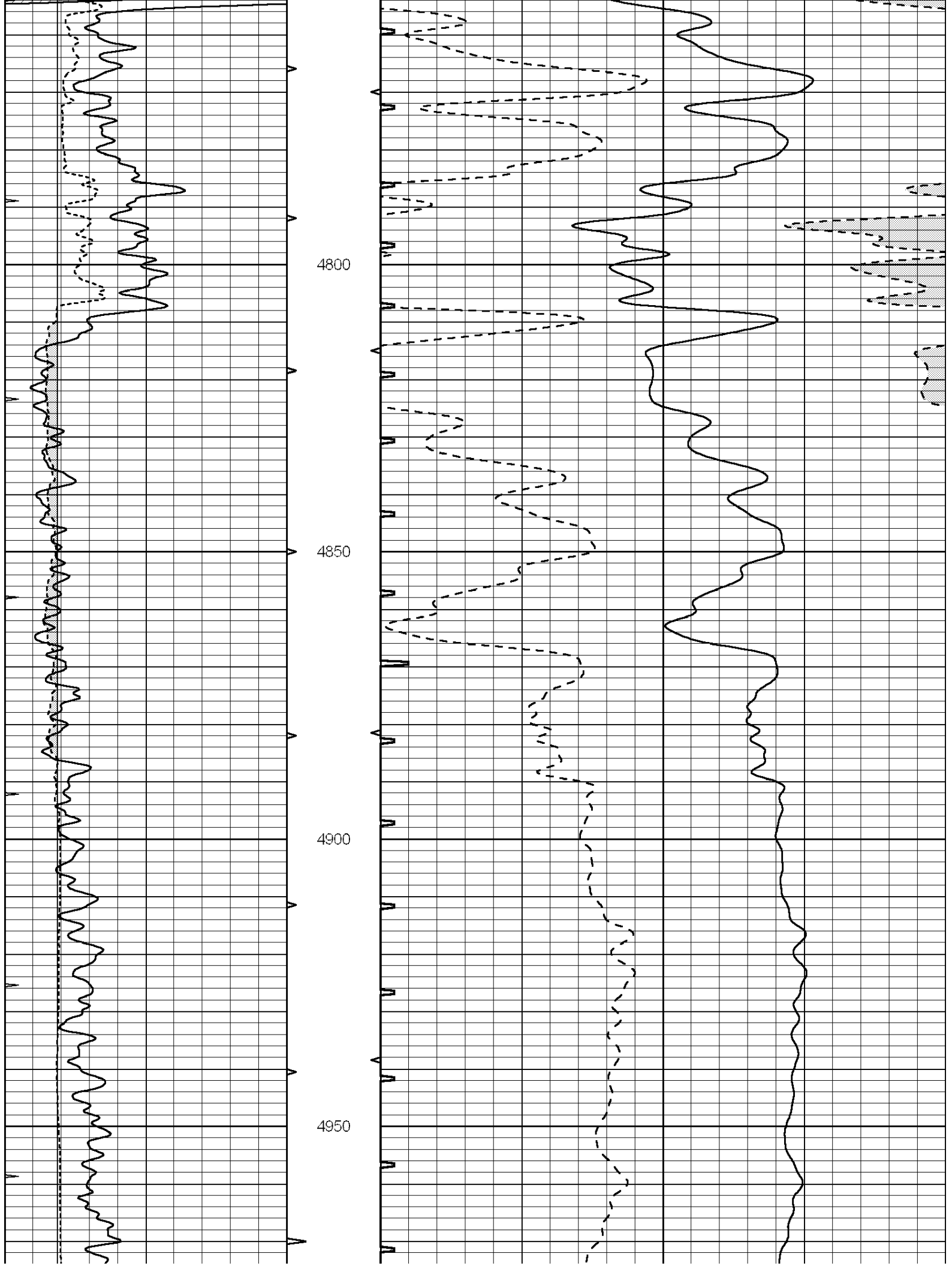
4400

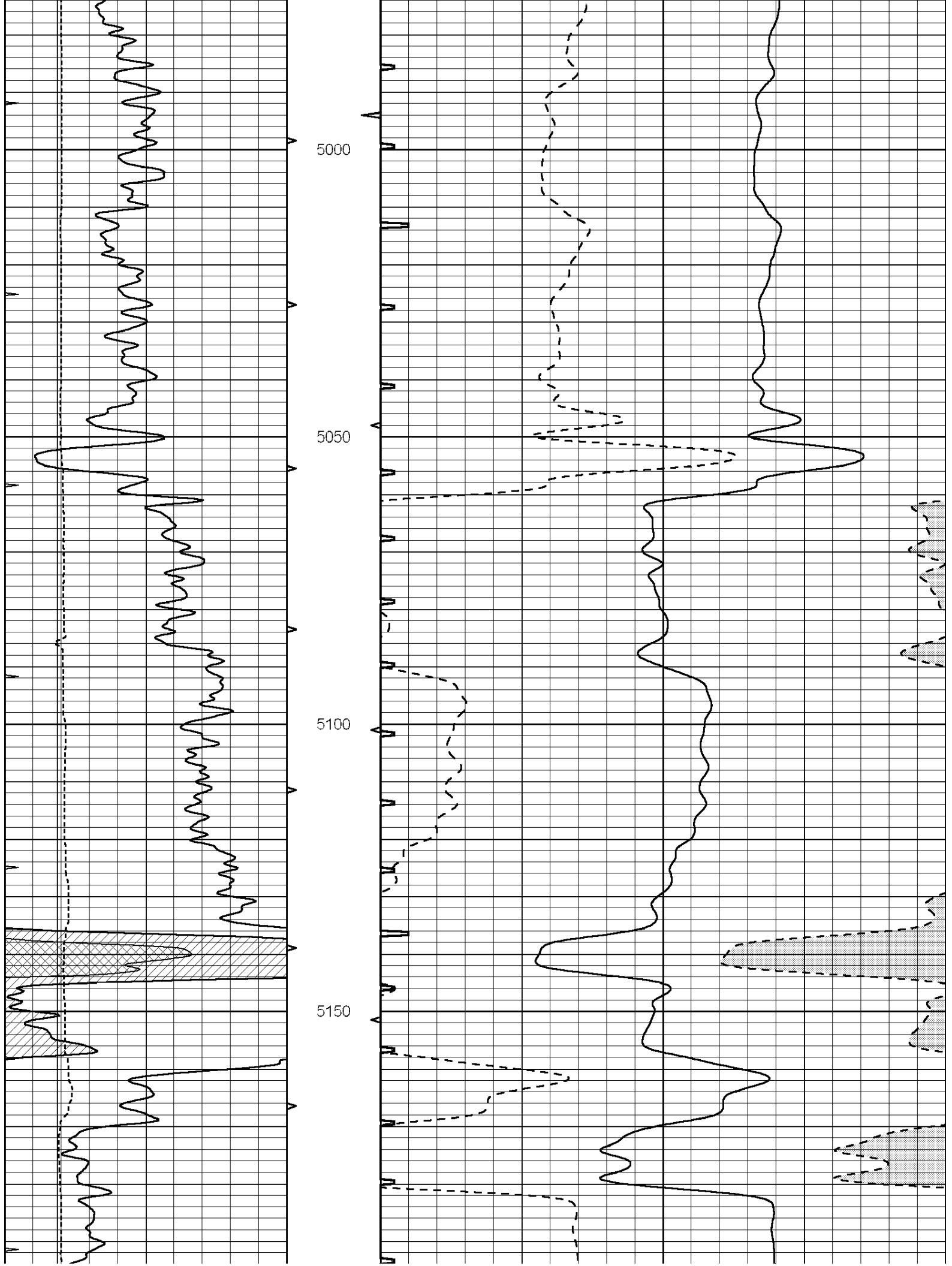
4450

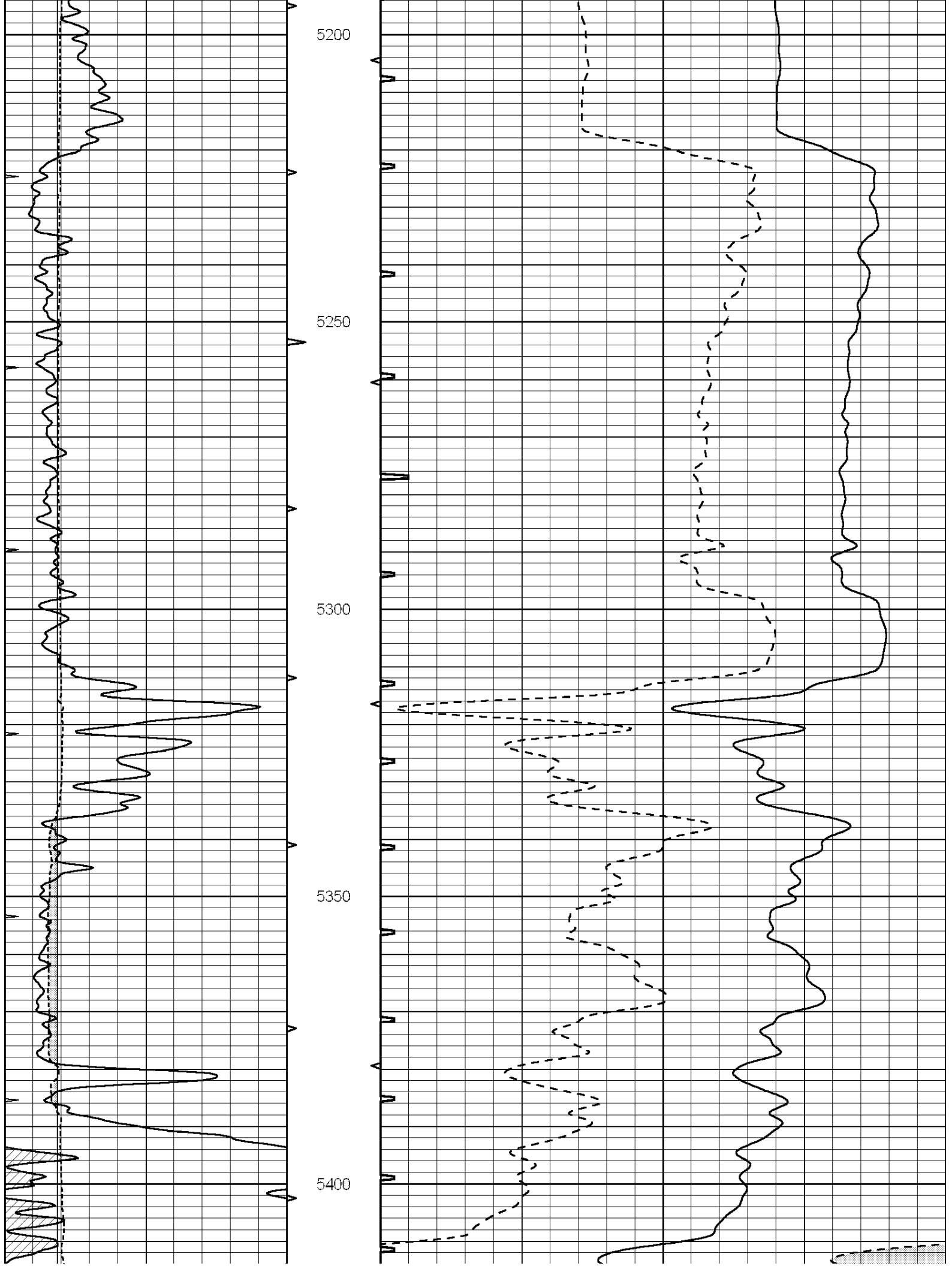
4500

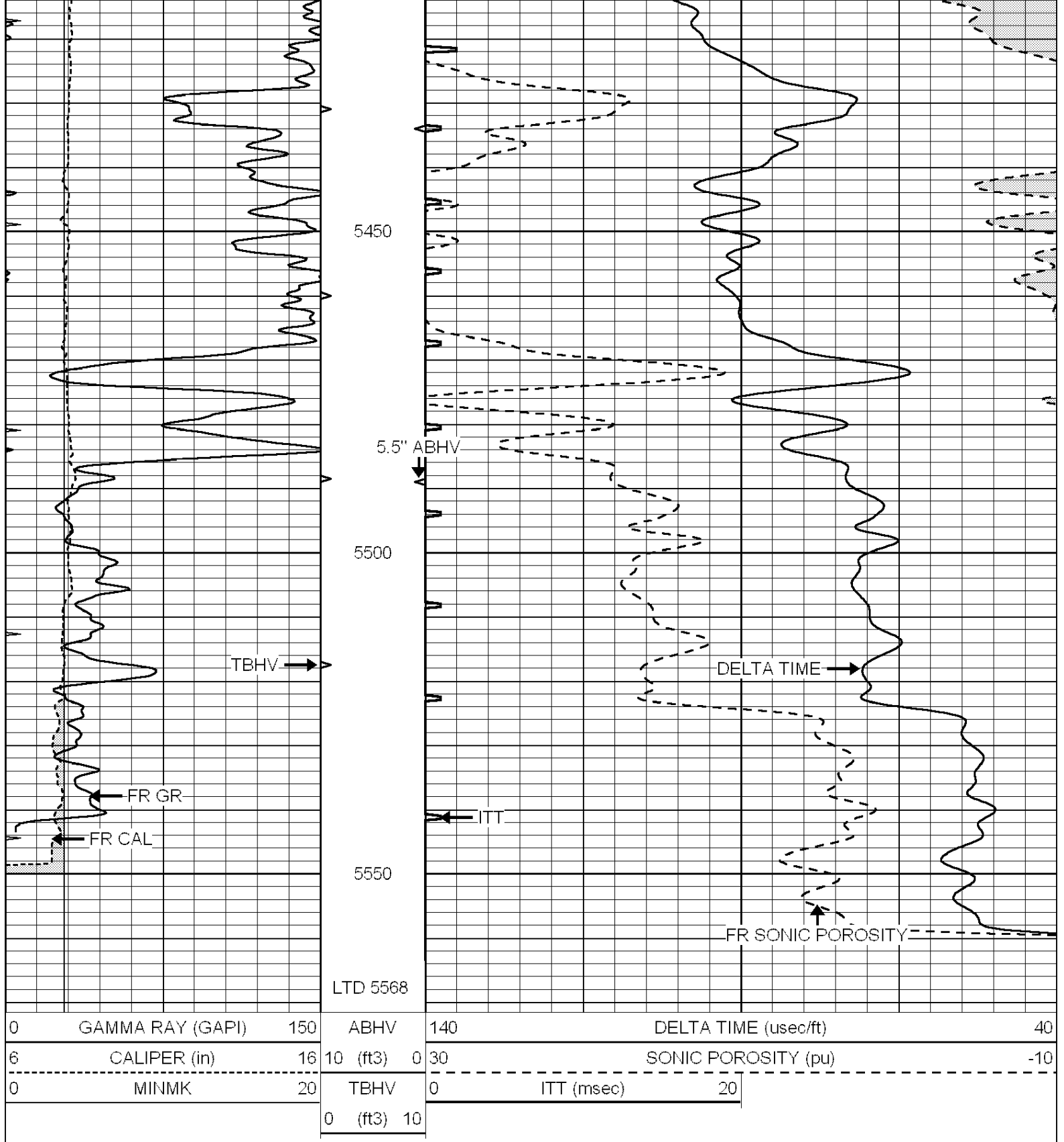










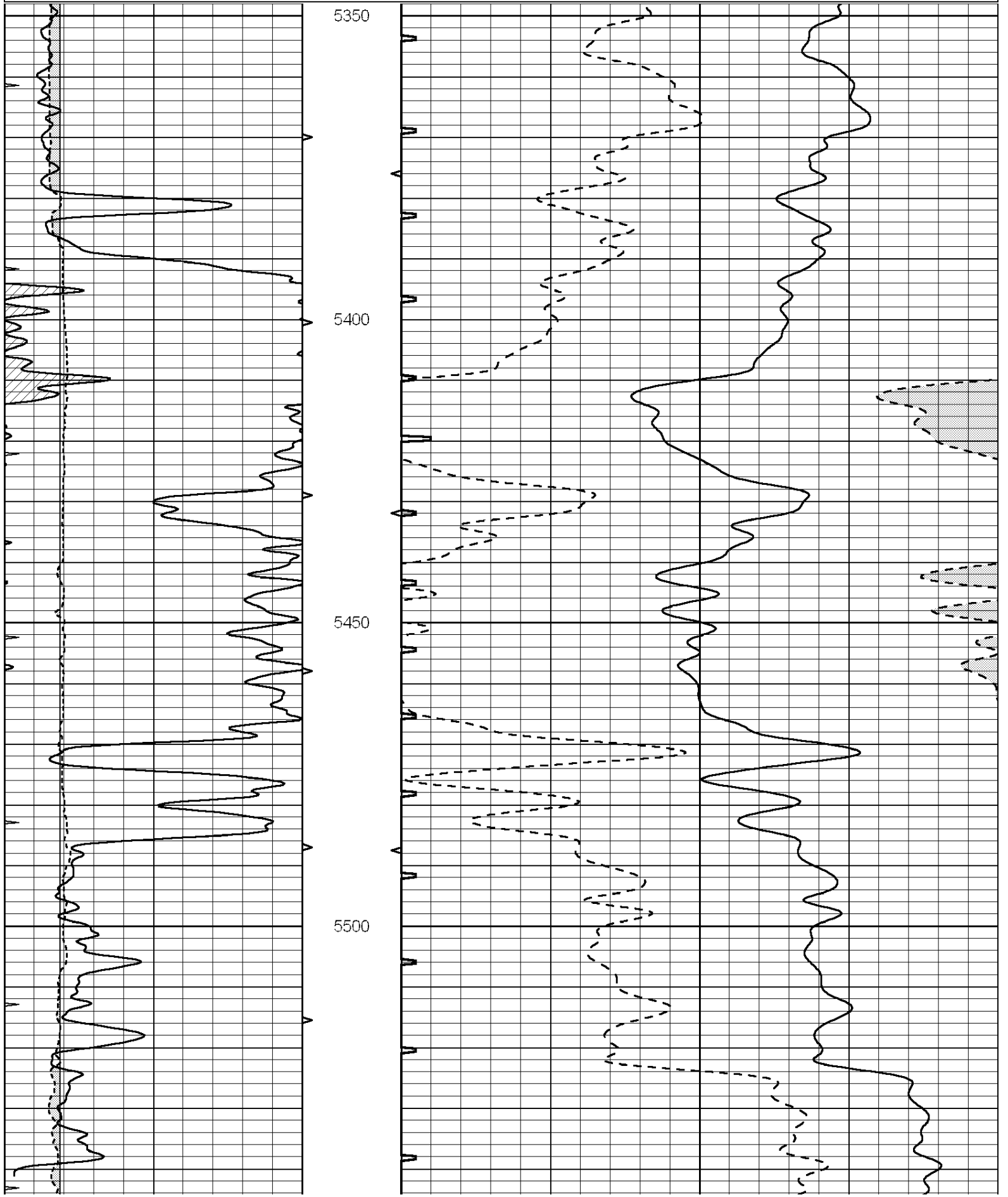


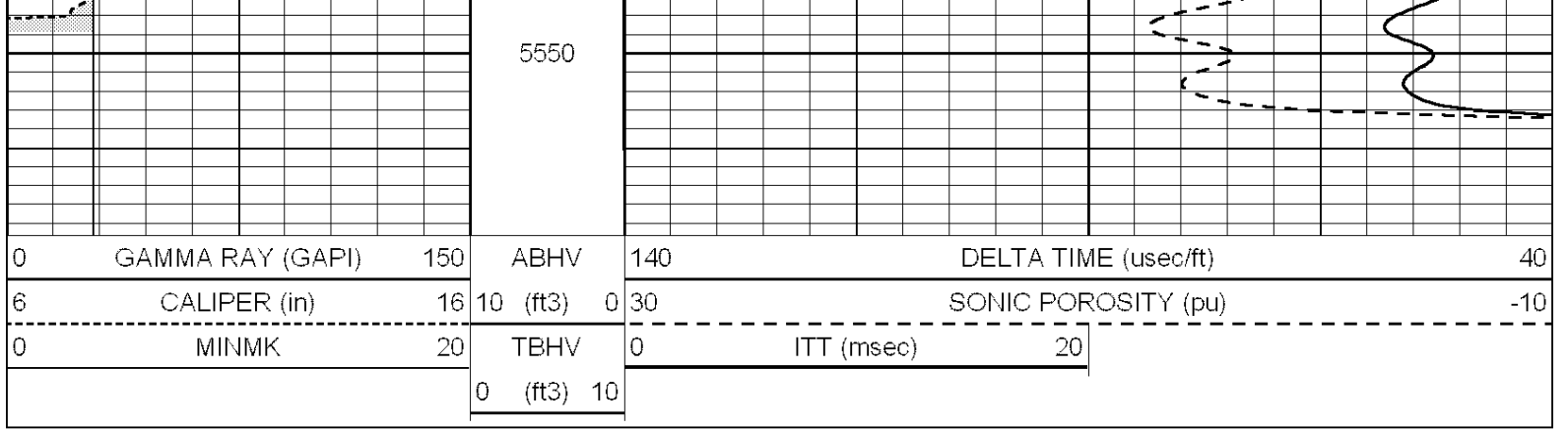
SUPERIOR
Hays,
Kansas

REPEAT SECTION

Database File: 006825pe.db
 Dataset Pathname: pass6.3
 Presentation Format: slt
 Dataset Creation: Wed May 11 12:24:19 2011 by Calc Open-Cased 090629
 Charted by: Depth in Feet scaled 1:240

0	GAMMA RAY (GAPI)	150	ABHV	140	DELTA TIME (usec/ft)	40	
6	CALIPER (in)	16	10 (ft3)	0	30	SONIC POROSITY (pu)	-10
0	MINMK	20	TBHV	0	ITT (msec)	20	
			0 (ft3)	10			





0	GAMMA RAY (GAPI)	150	ABHV	140	DELTA TIME (usec/ft)	40
6	CALIPER (in)	16	10 (ft3) 0	30	SONIC POROSITY (pu)	-10
0	MINMK	20	TBHV	0	ITT (msec)	20
			0 (ft3) 10			