



**MIDWEST SURVEYS**  
 LOGGING - PERFORATING - CONSULTING SERVICES  
 P.O. Box 68, Osawatomie, KS 66064  
 913 / 755 - 2128

**GAMMA RAY / NEUTRON / CCL**

File No. \_\_\_\_\_

Company **Sirius Energy Corporation**  
 Well **West VanWinkle No. P-20**

Field **Bush City Shoesting**

County **Anderson** State **Kansas**

Location  
 2469' FSL & 3541' FEL  
 NE-NW/NE-SW

Other Services  
 Perforate

Sec. 13 Typ. 21s Rge. 20e  
 Permanent Datum GL Elevation NA  
 Log Measured From GL  
 Drilling Measured From GL

Date 05-14-2011  
 Run Number One  
 Depth Driller 726.0  
 Depth Logger 719.3  
 Bottom Logged Interval 718.3  
 Top Log Interval 20.0  
 Fluid Level Full

Run	BIT	FROM	TO	SIZE	WGT.	FROM	TO
One	9.875"	0.0	21.0	7.00"		0.0	21.0
Two	5.625"	21.0	726.0	2.875"		0.0	720.0

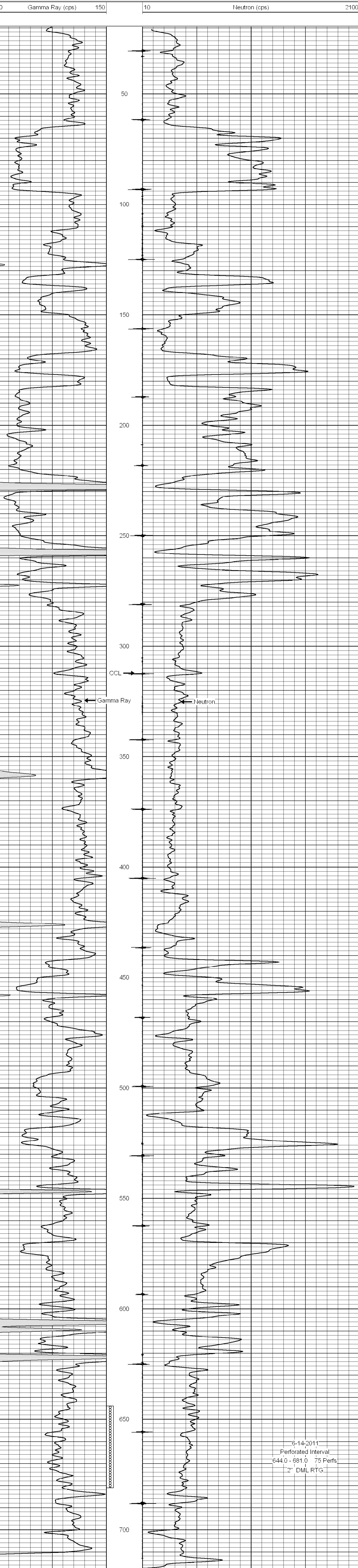
<<< Fold Here >>>

All interpretations are opinions based on inferences from electrical or other measurements and we cannot and do not guarantee the accuracy or correctness of any interpretation, and we shall not, except in the case of gross or willful negligence on our part, be liable or responsible for any loss, costs, damages, or expenses incurred or sustained by anyone resulting from any interpretation made by any of our officers, agents or employees. These interpretations are also subject to our general terms and conditions set out in our current Price Schedule.

**Comments**

Drilling Contractor :  
**John Leis Oilfield Services**

Database File: vwiki20p.db  
 Dataset Pathname: pass1  
 Presentation Format: gr-n-ccl  
 Dataset Creation: Tue Jun 14 15:29:44 2011 by Log Std Casedhole 07122  
 Charted by: Depth in Feet scaled 1:240



6-14-2011  
 Perforated Interval  
 644.0 - 681.0 75 Perfs  
 2" DML RTG