



**SUPERIOR**  
Hays,  
Kansas

**COMPENSATED**  
DENSITY / NEUTRON  
PE LOG

Company CORAL COAST PETROLEUM, LLC  
Well #1 "A" STEPHENS  
Field MORRISON NORTHEAST  
County CLARK  
State KANSAS

Company CORAL COAST PETROLEUM, LLC.  
Well #1 "A" STEPHENS  
Field MORRISON NORTHEAST  
County CLARK State KANSAS

Location: API # : 15-025-21522-0000  
1650' FSL & 2310' FWL  
SE - NE - SW  
SEC 10 TWP 32S RGE 21W  
Permanent Datum GROUND LEVEL Elevation 1988  
Log Measured From KELLY BUSHING 9' A.G.L.  
Drilling Measured From KELLY BUSHING  
Other Services  
DIL/MEL  
SONIC  
Elevation  
K.B. 1997  
D.F. 1995  
G.L. 1988

Date	1/23/11
Run Number	ONE
Depth Driller	5340
Depth Logger	5348
Bottom Logged Interval	5324
Top Log Interval	4000
Casing Driller	8 5/8 @ 639
Casing Logger	636
Bit Size	7 7/8
Type Fluid in Hole	CHEMICAL MUD
Density / Viscosity	9.157
pH / Fluid Loss	9.0/8.8
Source of Sample	FLOWLINE
Rim @ Meas. Temp	.75 @ 54F
Rmf @ Meas. Temp	.56 @ 54F
Rmc @ Meas. Temp	.90 @ 54F
Source of Rmf / Rmc	MEASURED
Rim @ BHT	.31 @ 128F
Time Circulation Stopped	3 HOURS
Time Logger on Bottom	
Maximum Recorded Temperature	128F
Equipment Number	680
Location	HAYS, KS.
Recorded By	JASON CAPPELLUCCI
Witnessed By	SEAN DEENIHAN

<<< Fold Here >>>

All interpretations are opinions based on inferences from electrical or other measurements and we cannot and do not guarantee the accuracy or correctness of any interpretation, and we shall not, except in the case of gross or willful negligence on our part, be liable or responsible for any loss, costs, damages, or expenses incurred or sustained by anyone resulting from any interpretation made by any of our officers, agents or employees. These interpretations are also subject to our general terms and conditions set out in our current Price Schedule.

**Comments**

THANK YOU FOR USING SUPERIOR WELL SERVICE (785) 628-6395  
DIRECTIONS  
PROTECTION, KS. - 6 E. - 4 MILES N. INTO

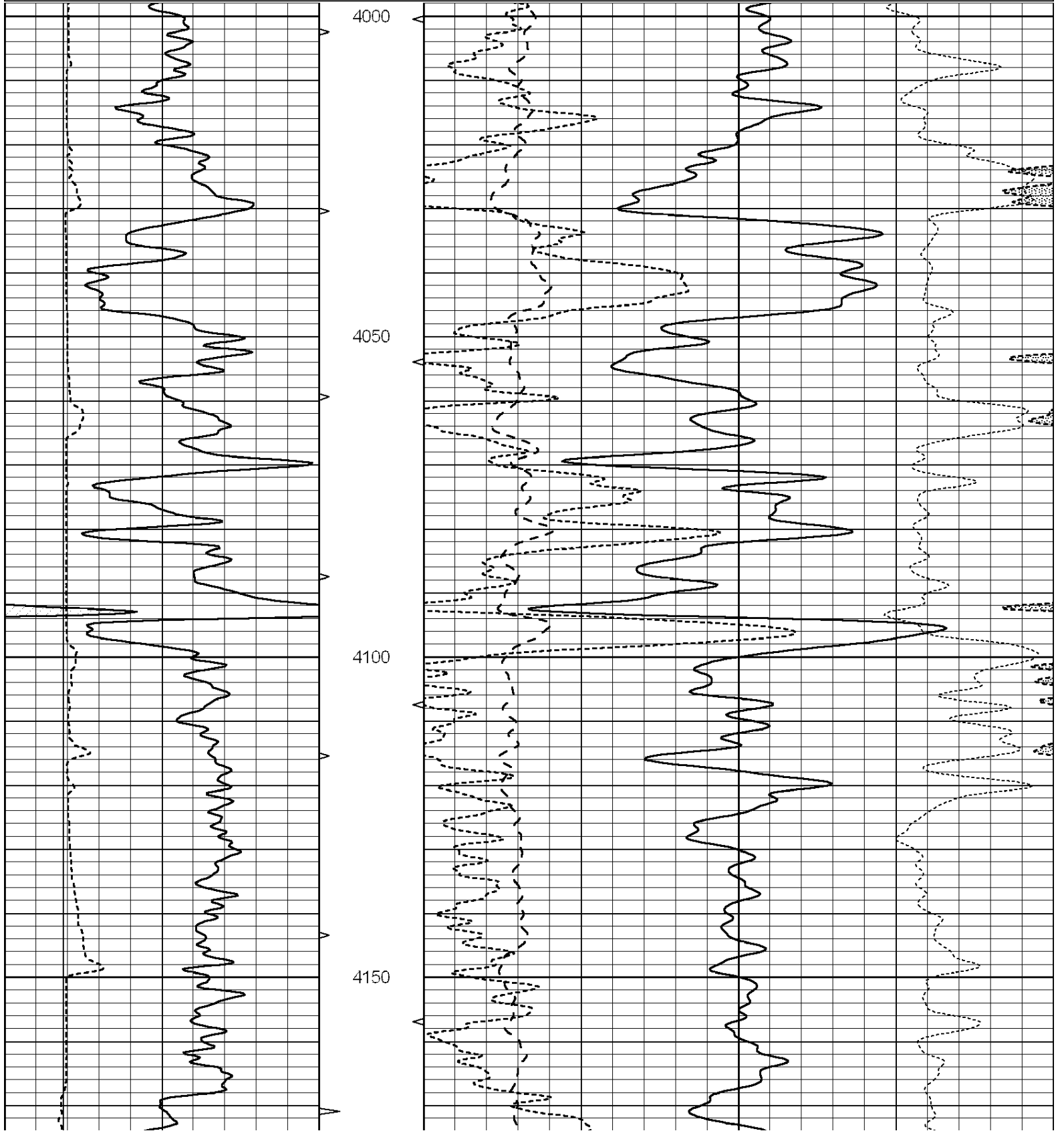


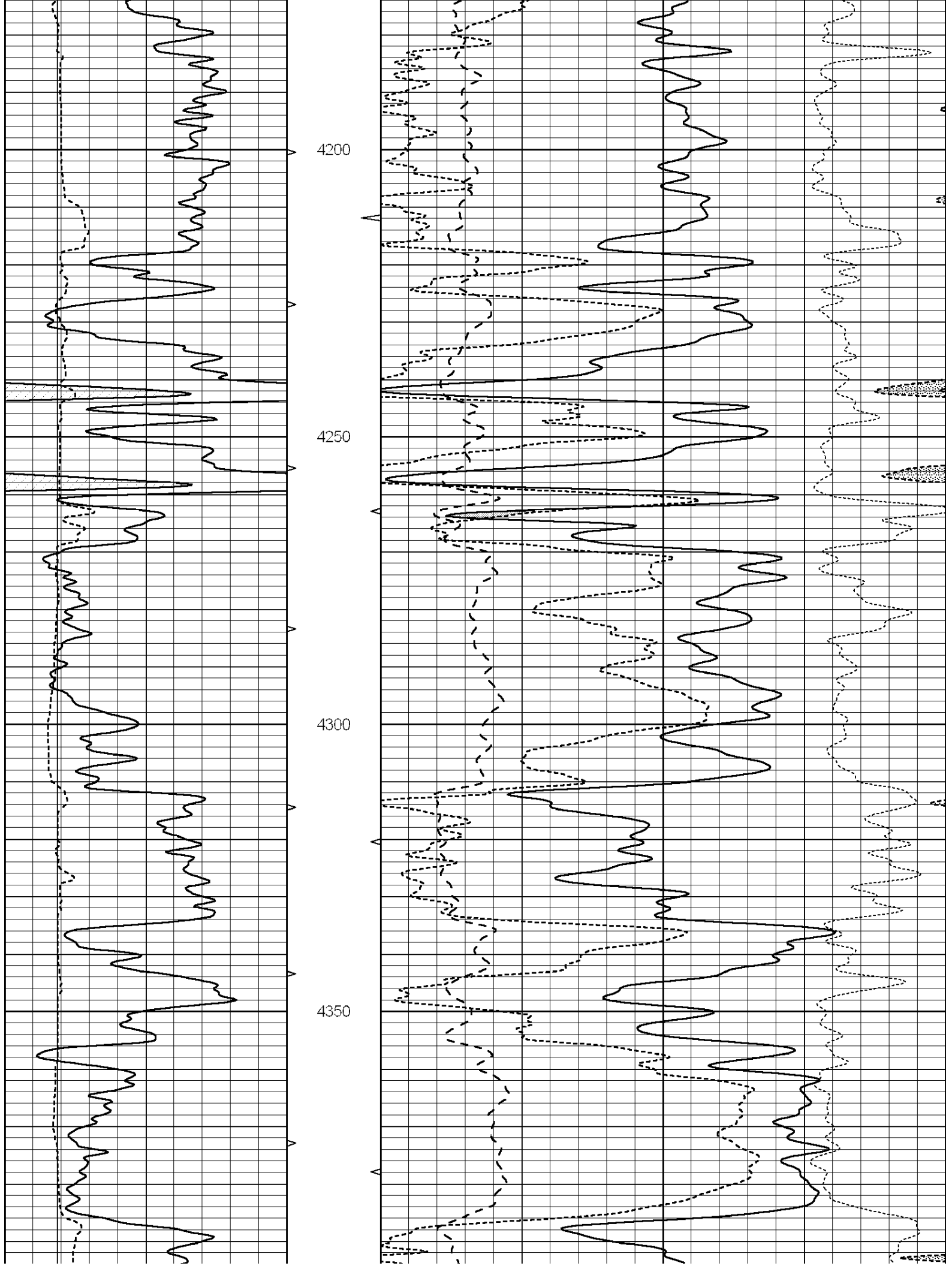
**SUPERIOR**  
Hays,  
Kansas

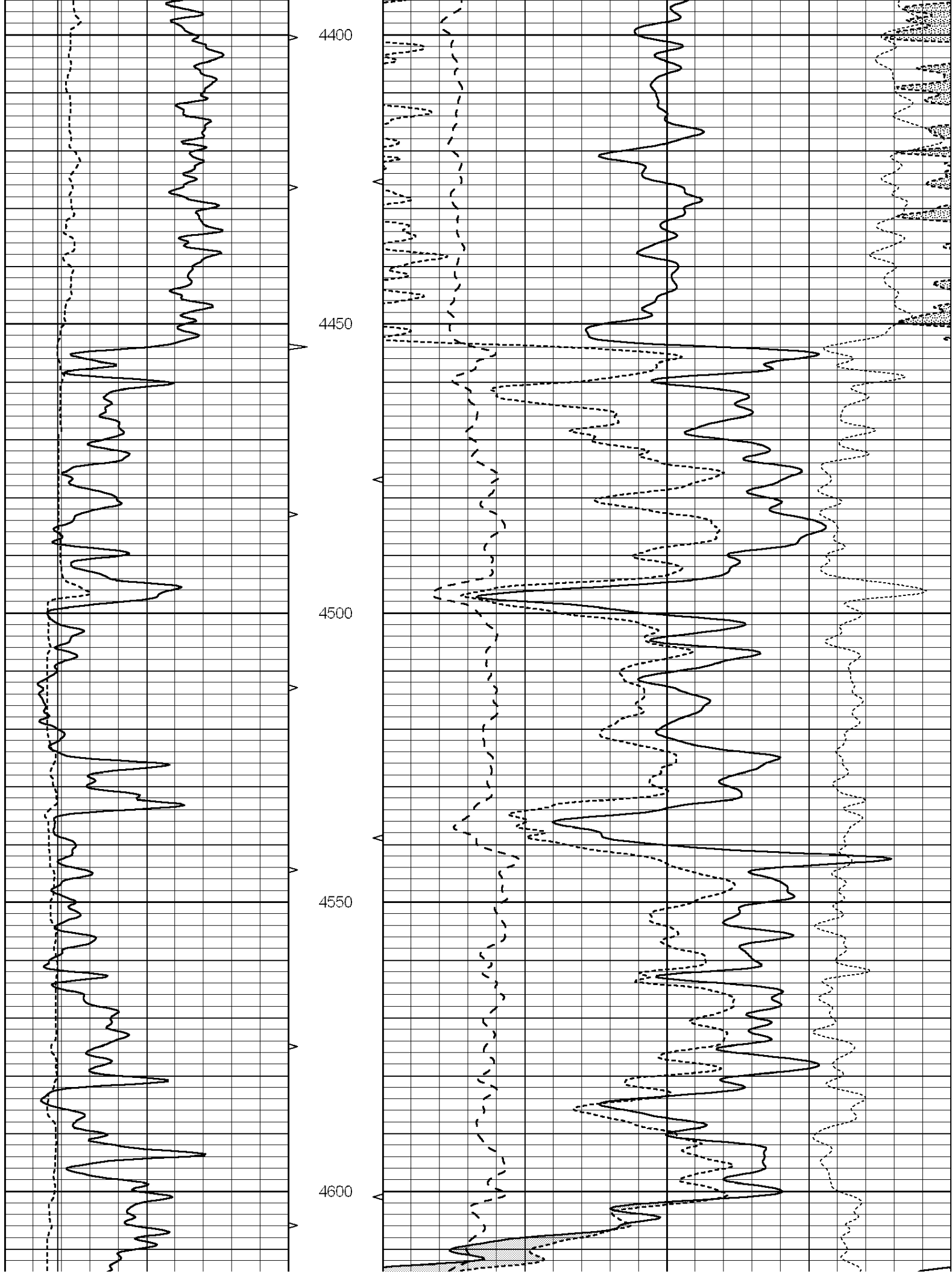
**MAIN SECTION**

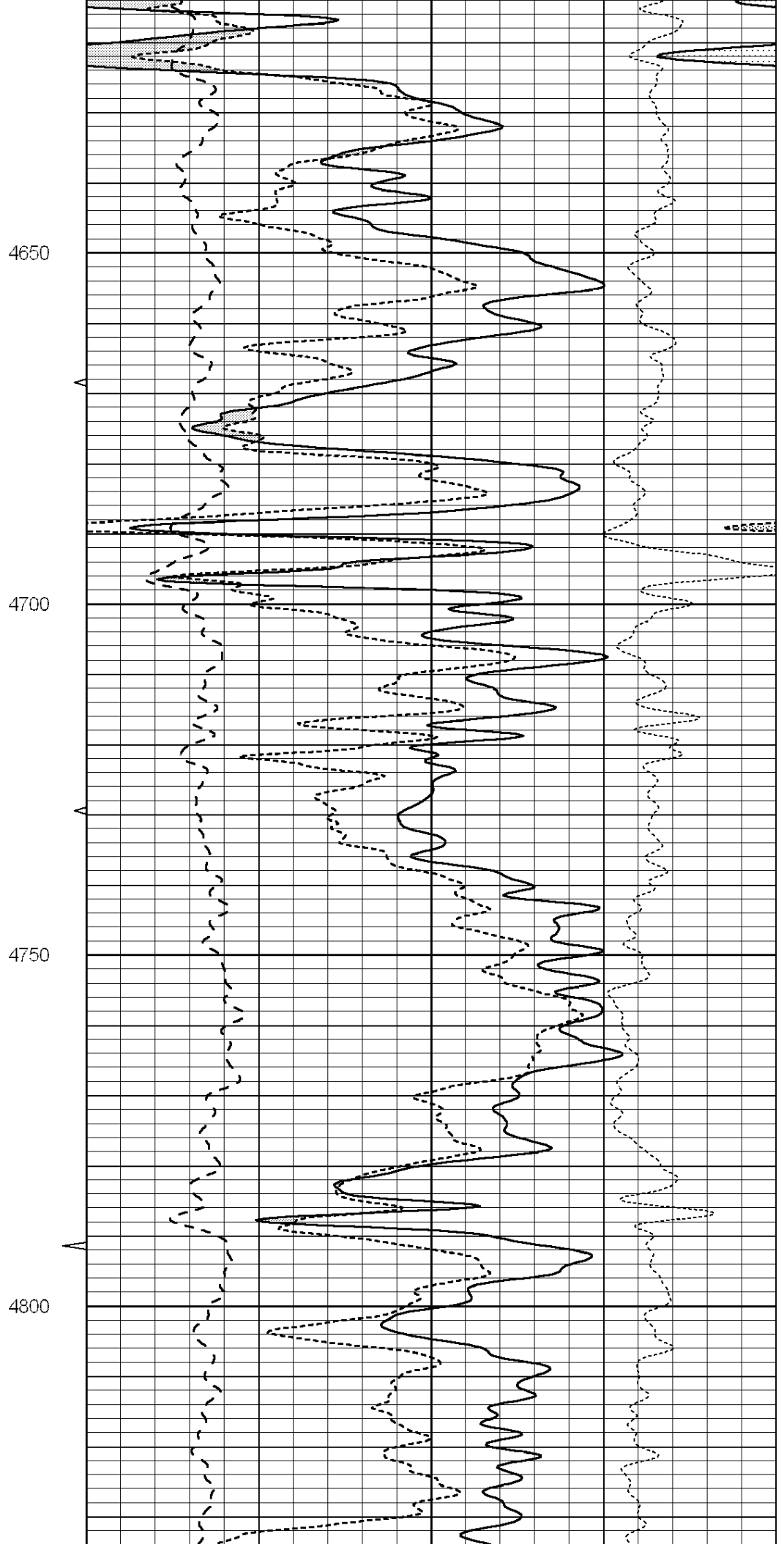
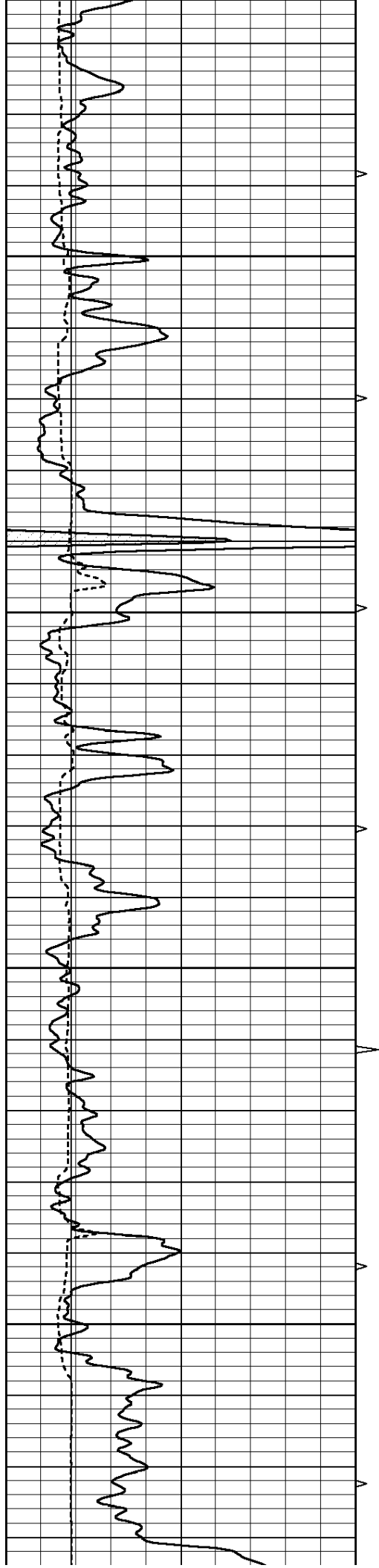
Database File: 006680pe.db  
 Dataset Pathname: pass3.1  
 Presentation Format: \_ldt\_neu  
 Dataset Creation: Fri Jan 28 04:30:56 2011 by Calc Open-Cased 090629  
 Charted by: Depth in Feet scaled 1:240

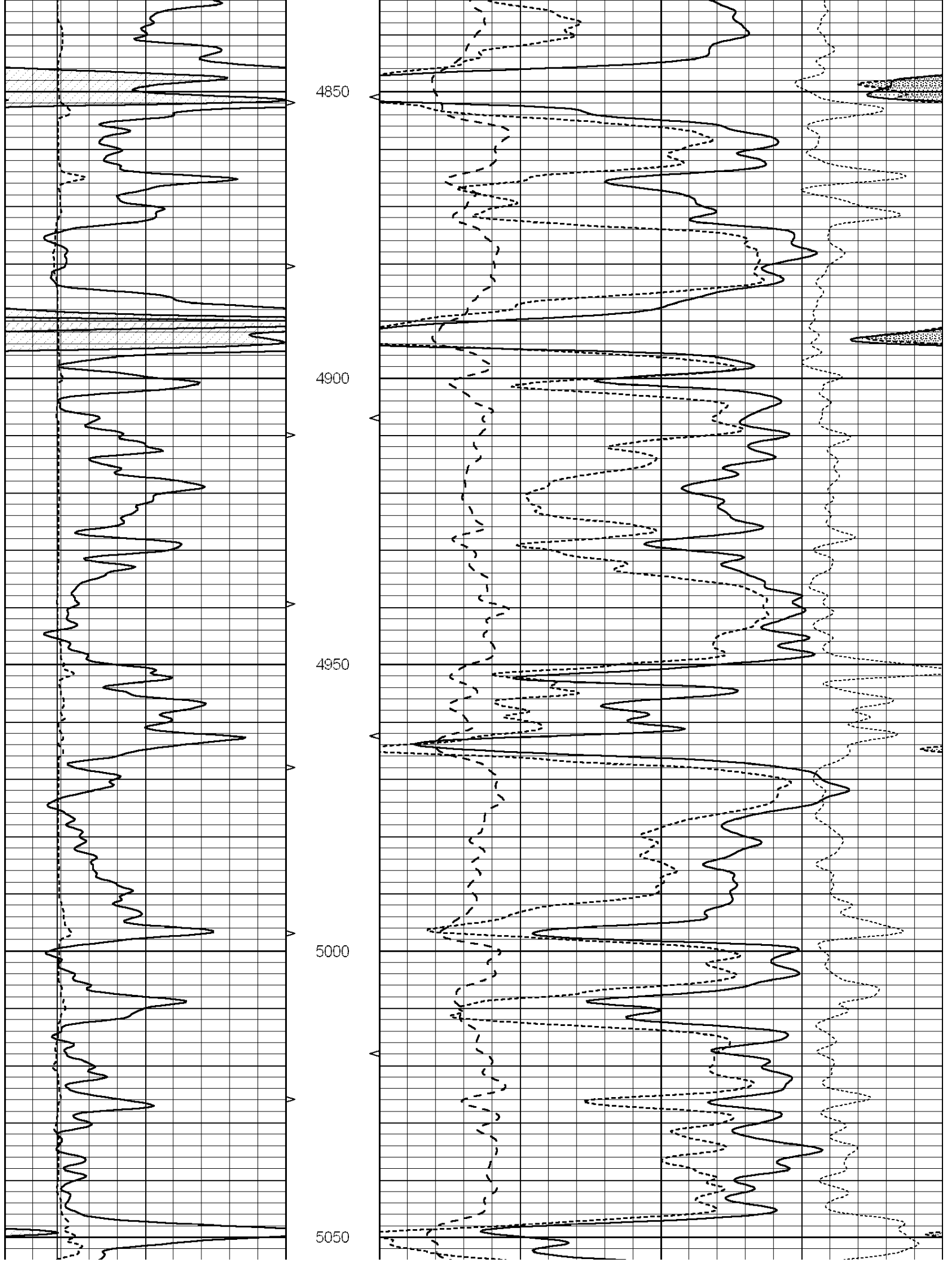
0	GAMMA RAY (GAPI)	150	ABHV	30	COMPENSATED DENSITY (pu)	-10
6	CALIPER (in)	16	10 (ft3)	0 30	COMPENSATED NEUTRON (pu)	-10
			TBHV	0	PE	10 -0.25
			0 (ft3)	10	CORRECTION (g/cc)	0.25

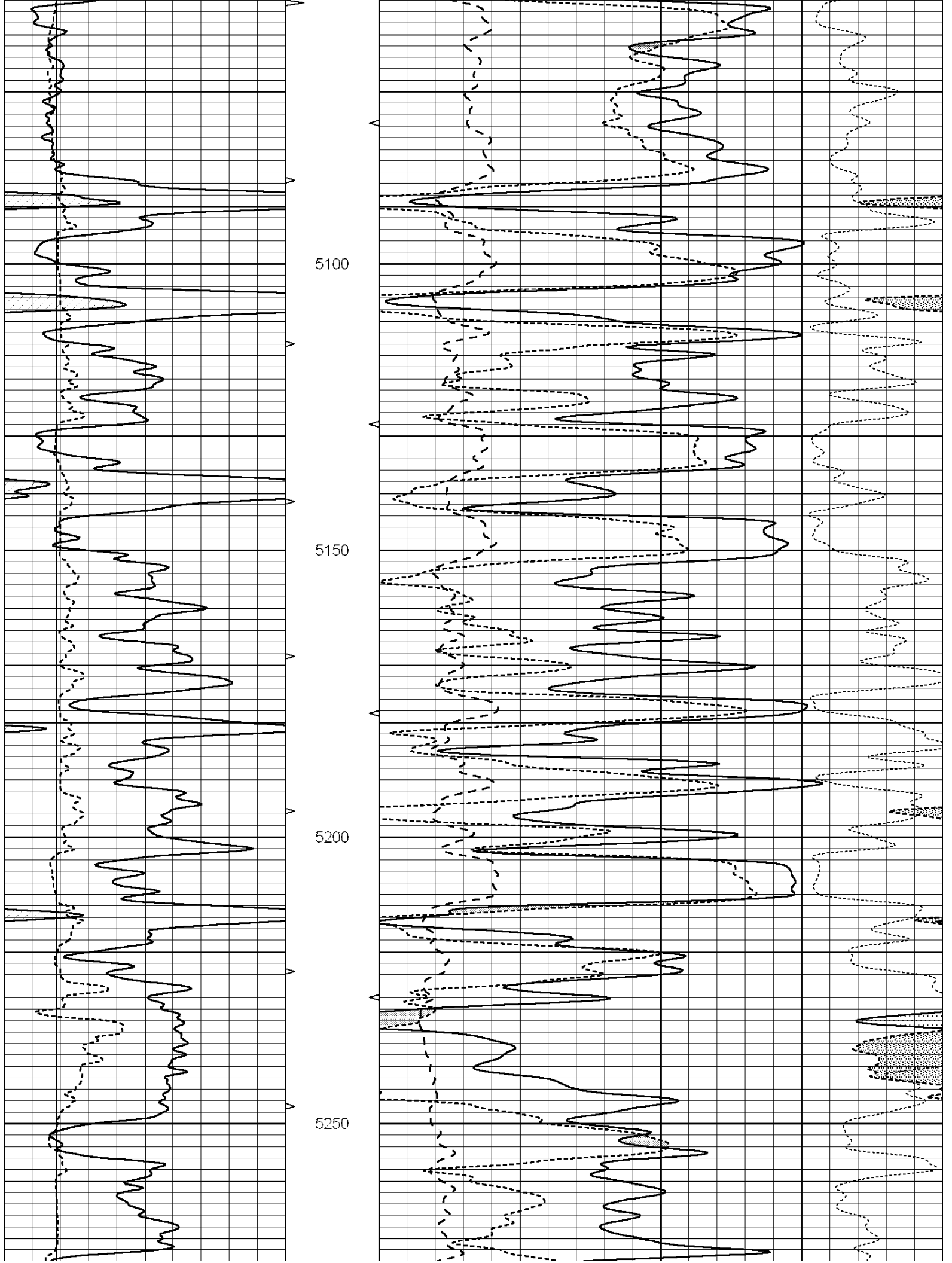


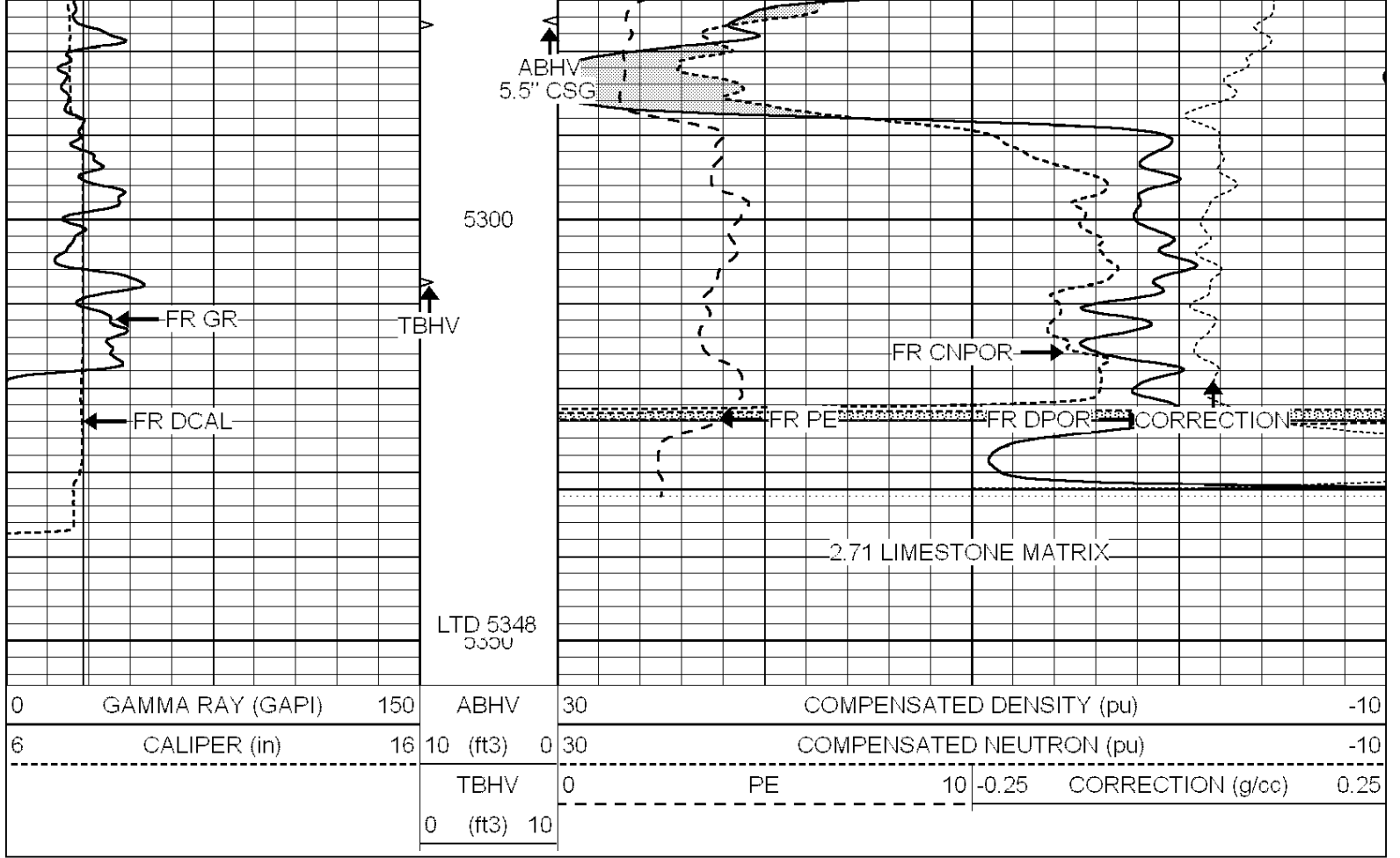










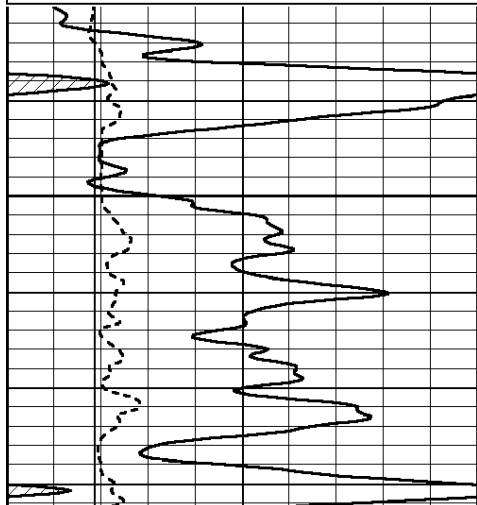


SUPERIOR  
Hays,  
Kansas

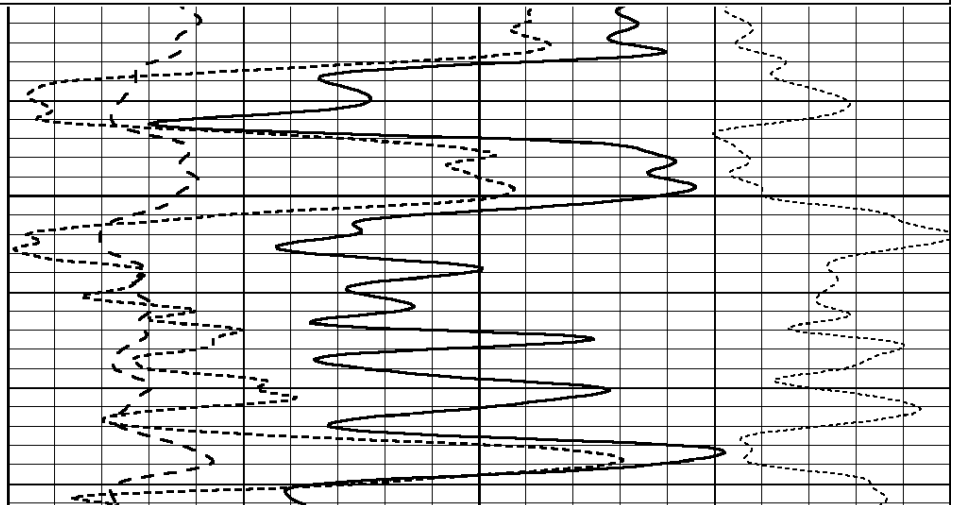
# REPEAT SECTION

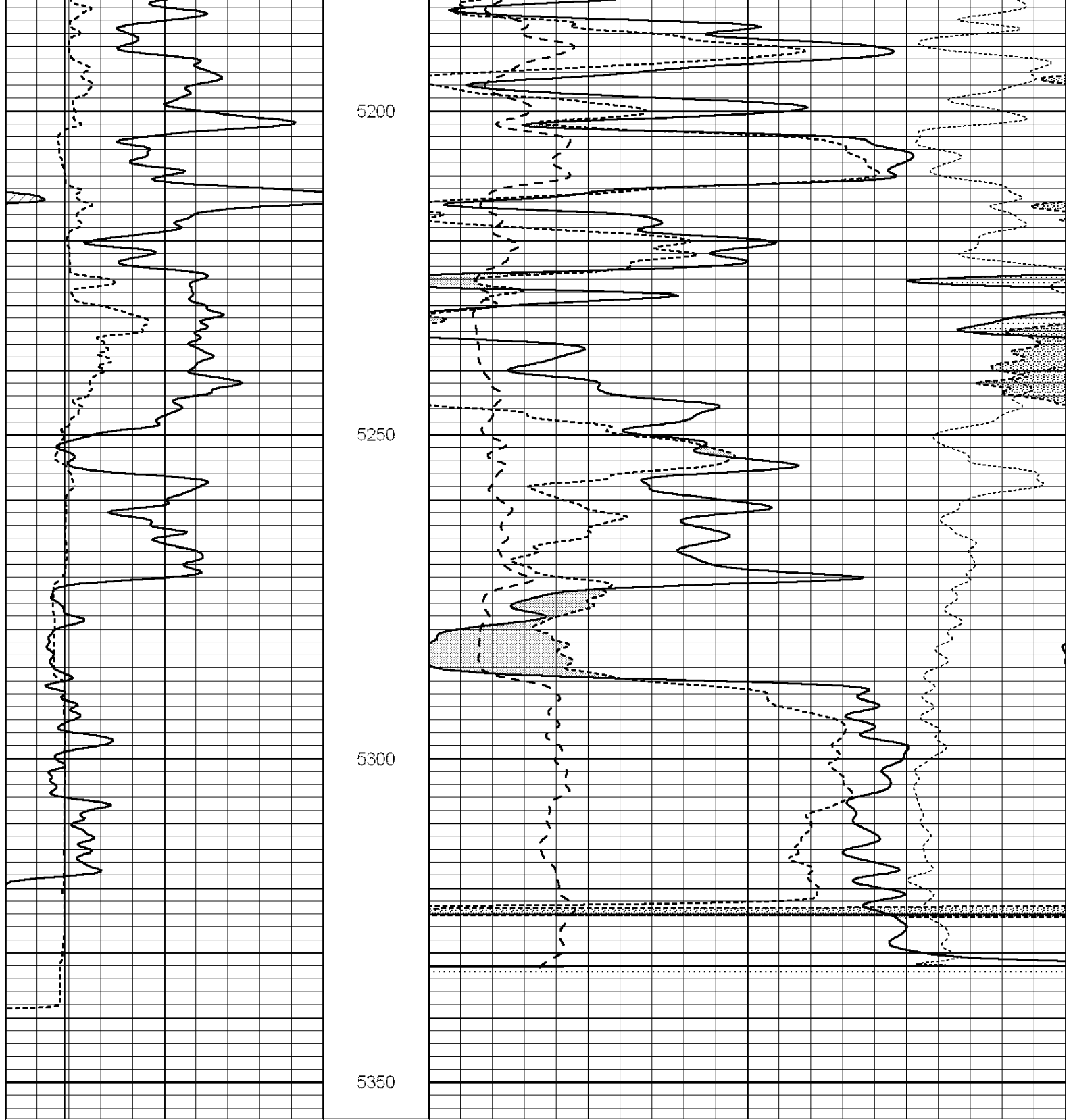
Database File: 006680pe.db  
 Dataset Pathname: pass2.1  
 Presentation Format: \_ldt\_neu  
 Dataset Creation: Fri Jan 28 04:21:42 2011 by Calc Open-Cased 090629  
 Charted by: Depth in Feet scaled 1:240

0	GAMMA RAY (GAPI)	150	ABHV	30	COMPENSATED DENSITY (pu)	-10			
6	CALIPER (in)	16	10 (ft3)	0	30	COMPENSATED NEUTRON (pu)	-10		
			TBHV	0	PE	10	-0.25	CORRECTION (g/cc)	0.25
			0 (ft3)	10					



5150





0	GAMMA RAY (GAPI)	150	ABHV	30	COMPENSATED DENSITY (pu)	-10
6	CALIPER (in)	16	10 (ft3)	0	COMPENSATED NEUTRON (pu)	-10
			TBHV	0	PE	10 -0.25
			0 (ft3)	10	CORRECTION (g/cc)	0.25

Calibration Report

Database File: 006680pe.db  
 Dataset Pathname: pass2.1  
 Dataset Creation: Fri Jan 28 04:21:42 2011 by Calc Open-Cased 090629

Serial-Model: PROBE7-DILG  
 Surface Cal Performed: Wed Jul 30 06:14:24 2008  
 Downhole Cal Performed: Mon Jul 28 12:02:56 2008  
 After Survey Verification Performed: Mon Jul 28 12:02:56 2008

Surface Calibration

Loop:	Readings			References			Results	
	Air	Loop		Air	Loop		m	b
Deep	-0.014	0.629	V	0.000	400.000	mmho/m	621.923	8.759
Medium	0.039	0.728	V	0.000	464.000	mmho/m	673.322	-26.058
Internal:	Zero	Cal		Zero	Cal		m	b
Deep	0.011	0.610	V	0.000	400.000	mmho/m	667.135	-7.256
Medium	0.005	0.712	V	0.000	464.000	mmho/m	655.677	-3.102

Downhole Calibration

	Readings			References			Results	
	Zero	Cal		Zero	Cal		m'	b'
Deep	0.000	0.000	mmho/m	14.508	388.384	mmho/m	1.000	0.000
Medium	0.000	0.000	mmho/m	166.367	504.400	mmho/m	1.000	0.000
LL3		7.500	V		1400.000	Ohm-m		
		0.000	V		20.000	Ohm-m		
		-7.200	V		4000.000	mmho-m		

After Survey Verification

	Readings			Targets			Results	
	Zero	Cal		Zero	Cal		m'	b'
Deep	0.000	0.000	mmho/m	0.000	0.000	mmho/m	0.000	0.000
Medium	0.000	0.000	mmho/m	0.000	0.000	mmho/m	0.000	0.000
LL3		1.000	Ohm-m		1.000	Ohm-m		
		0.000	Ohm-m		0.000	Ohm-m		
		1.000	mmho-m		1.000	mmho-m		

Litho Density Calibration Report  
 Serial: 002 Model: PRB  
 Performed Mon Oct 29 15:40:49 2007

Litho Density Calibration

	Background	Magnesium	Aluminum	Sandstone	
Window 1	1056.3	9118.0	2809.7	10378.4	cps
Window 2	969.9	7671.9	2431.6	8565.8	cps
Window 3	683.8	2939.8	1161.0	3161.8	cps
Window 4	231.4	231.6	226.7	230.8	cps
Long Space	0.0	6702.0	1461.7	7595.9	cps
Short Space	1.2	1433.6	959.4	1568.6	cps
Rho		1.7100	2.5900	1.3800	g/cc
Pe			2.5700	1.5500	
Rib Angle	: 45.2	Rib Slope	: 1.008	Density/Spine Ratio	: 0.559
Spine Angle	: 75.2	Spine Slope	: 3.791	Spine Intercept	: -18.7

Caliper

	Readings	Reference
Low Ref	2.7	8.0
High Ref	4.9	14.0
Gain: 2.8		Offset: 0.1

Serial Number: 51  
Tool Model: G

CALIBRATION

Detector	Readings	Target	Normalization
Short Space	1.00 cps	1.00 cps	1.0000
Long Space	1.00 cps	1.00 cps	1.0000

Gamma Ray Calibration Report

Serial Number: GR6  
Tool Model: OPEN  
Performed: Wed Jan 26 17:48:58 2011

Calibrator Value: 150.0 GAPI

Background Reading: 0.0 cps  
Calibrator Reading: 276.0 cps

Sensitivity: 0.9035 GAPI/cps