



**SUPERIOR**  
Hays,  
Kansas

**MICRO**  
LOG

Company CORAL COAST PETROLEUM, LLC  
Well #1 "A" STEPHENS  
Field MORRISON NORTHEAST  
County CLARK  
State KANSAS

Company CORAL COAST PETROLEUM, LLC.  
Well #1 "A" STEPHENS  
Field MORRISON NORTHEAST  
County CLARK State KANSAS

Location: API # : 15-025-21522-0000  
1650' FSL & 2310' FWL  
SE - NE - SW  
SEC 10 TWP 32S RGE 21W  
Permanent Datum GROUND LEVEL Elevation 1988  
Log Measured From KELLY BUSHING 9' A.G.L.  
Drilling Measured From KELLY BUSHING  
Other Services  
CDL/CNL/PE  
DIL/SON  
Elevation  
K.B. 1997  
D.F. 1995  
G.L. 1988

Date	1/28/11		
Run Number	TWO		
Depth Driller	5340		
Depth Logger	5348		
Bottom Logged Interval	5330		
Top Log Interval	4000		
Casing Driller	8 5/8 @ 639		
Casing Logger	636		
Bit Size	7 7/8		
Type Fluid in Hole	CHEMICAL MUD	CHLORIDES 6500 PPM	
Density / Viscosity	9.157		
pH / Fluid Loss	9.0/8.8		
Source of Sample	FLOWLINE		
Rim @ Meas. Temp	.75 @ 54F		
Rmf @ Meas. Temp	.56 @ 54F		
Rmc @ Meas. Temp	.90 @ 54F		
Source of Rmf / Rmc	MEASURED		
Rim @ BHT	.31 @ 128F		
Time Circulation Stopped	3 HOURS		
Time Logger on Bottom			
Maximum Recorded Temperature	128F		
Equipment Number	680		
Location	HAYS, KS.		
Recorded By	JASON CAPPELLUCCI		
Witnessed By	SEAN DEENIHAN		

<<< Fold Here >>>

All interpretations are opinions based on inferences from electrical or other measurements and we cannot and do not guarantee the accuracy or correctness of any interpretation, and we shall not, except in the case of gross or willful negligence on our part, be liable or responsible for any loss, costs, damages, or expenses incurred or sustained by anyone resulting from any interpretation made by any of our officers, agents or employees. These interpretations are also subject to our general terms and conditions set out in our current Price Schedule.

Comments

THANK YOU FOR USING SUPERIOR WELL SERVICE (785) 628-6395  
DIRECTIONS  
PROTECTION, KS. - 6 E. - 4 MILES N. INTO

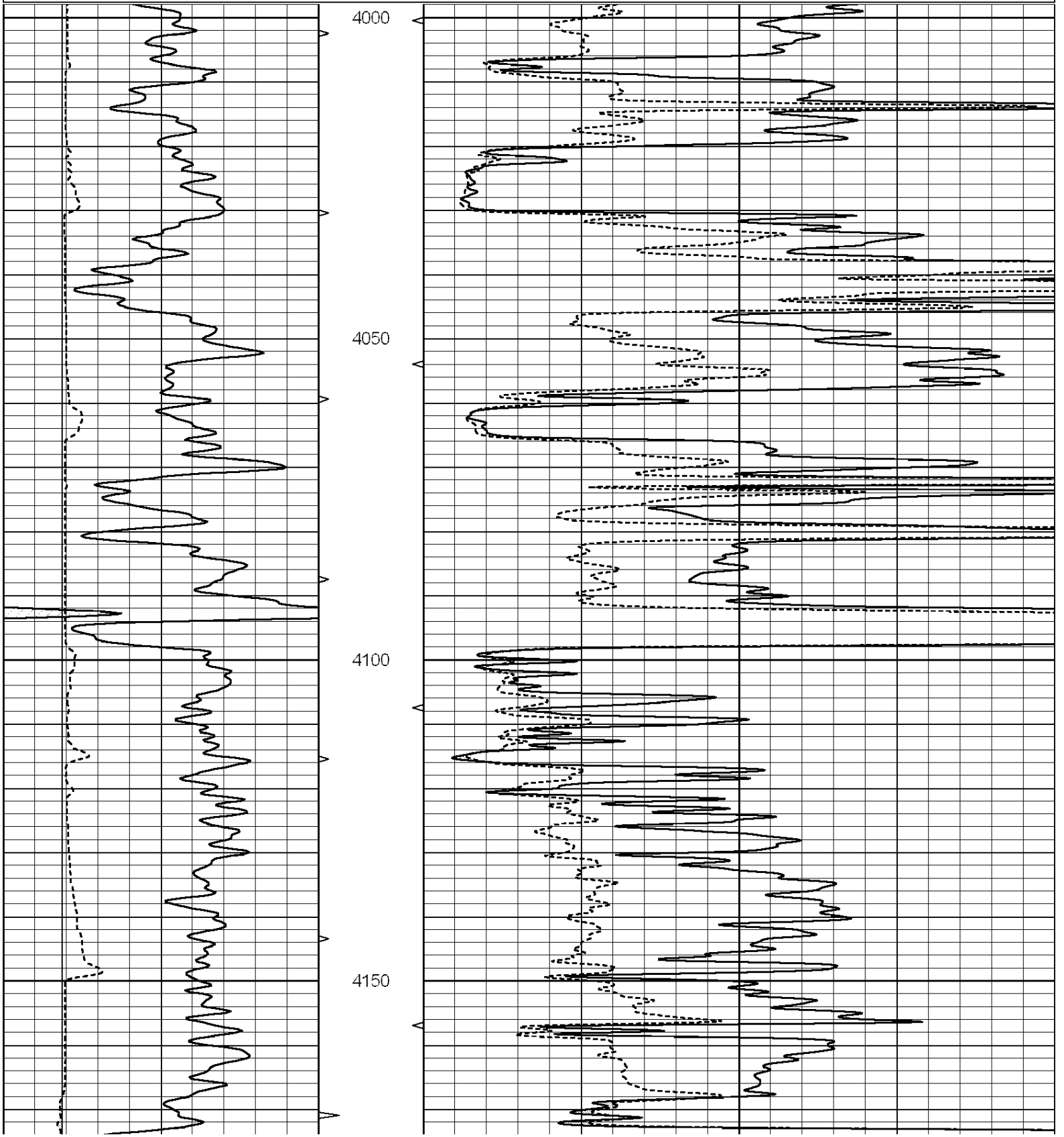


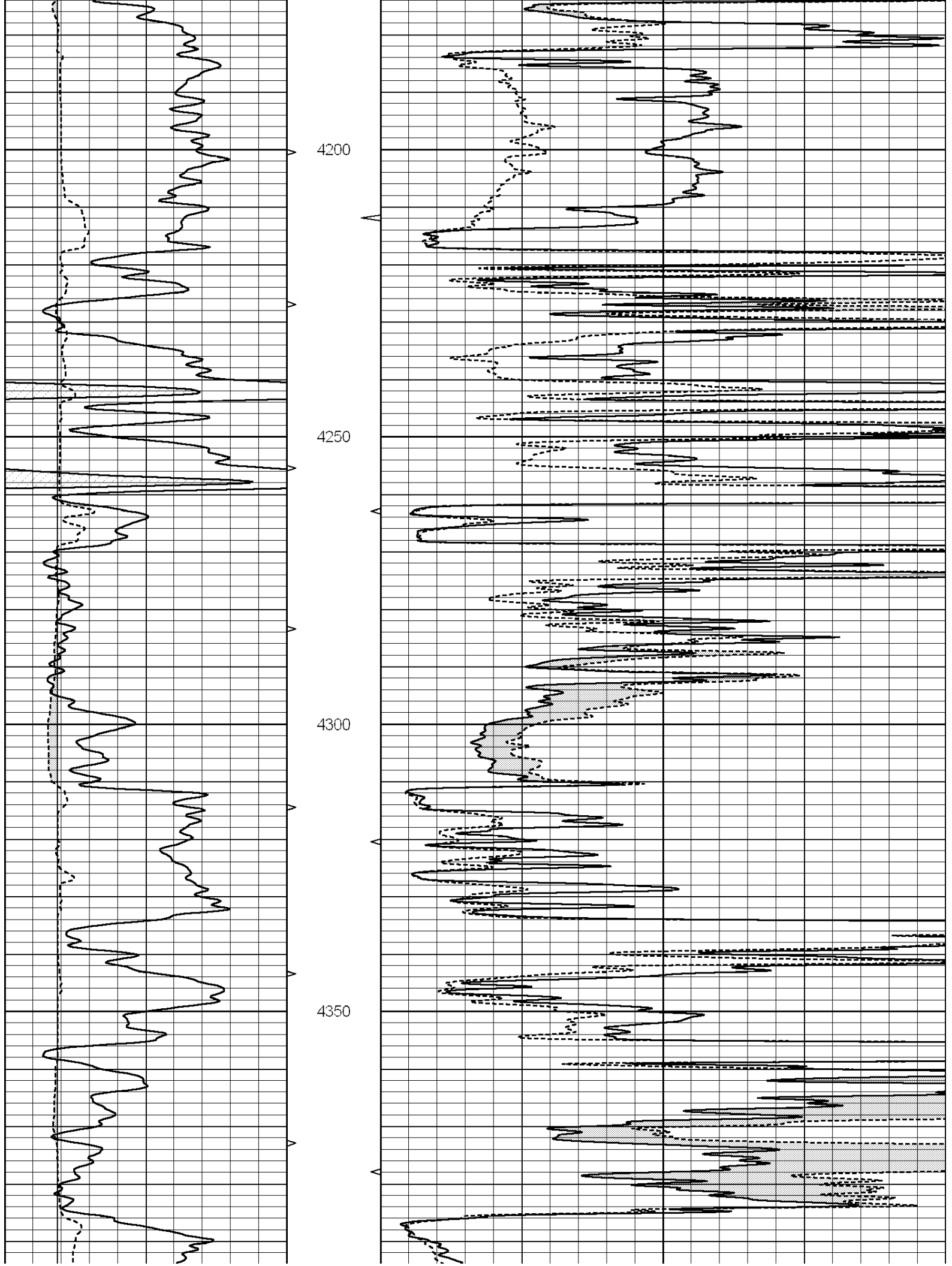
**SUPERIOR**  
Hays,  
Kansas

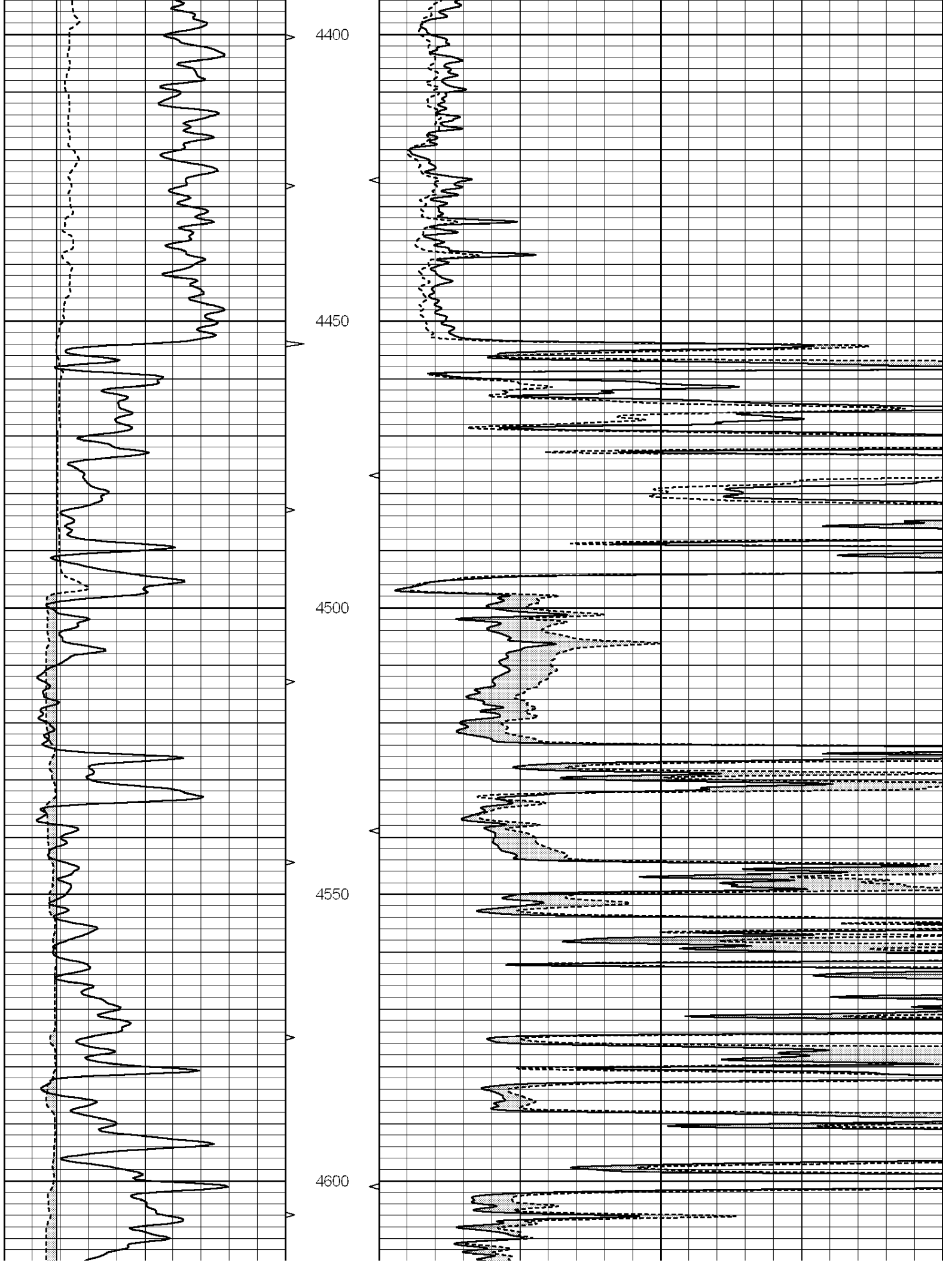
**MAIN SECTION**

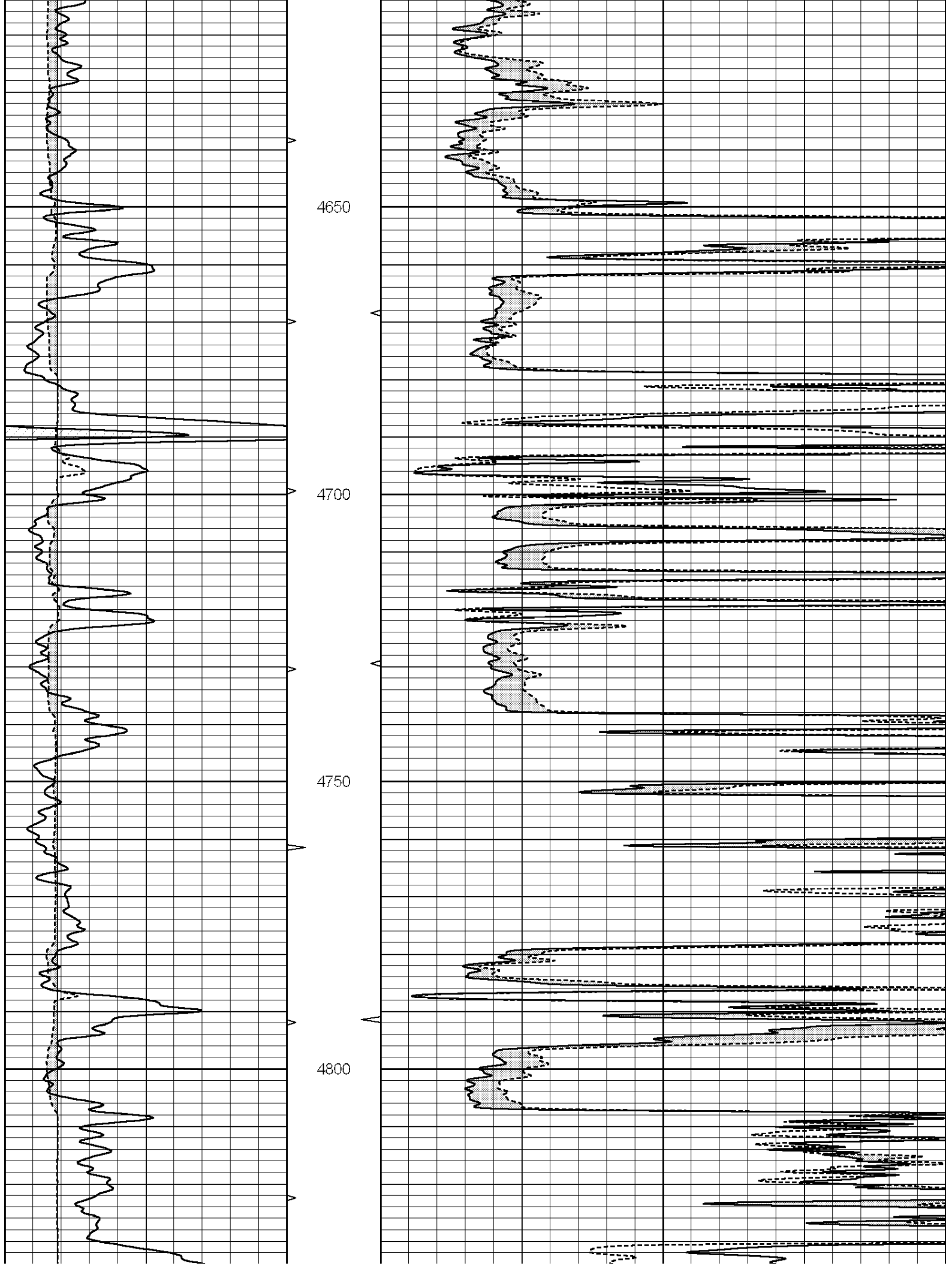
Database File: 006680pe.db  
 Dataset Pathname: pass6.1  
 Presentation Format: \_micro  
 Dataset Creation: Fri Jan 28 07:25:34 2011 by Calc Open-Cased 090629  
 Charted by: Depth in Feet scaled 1:240

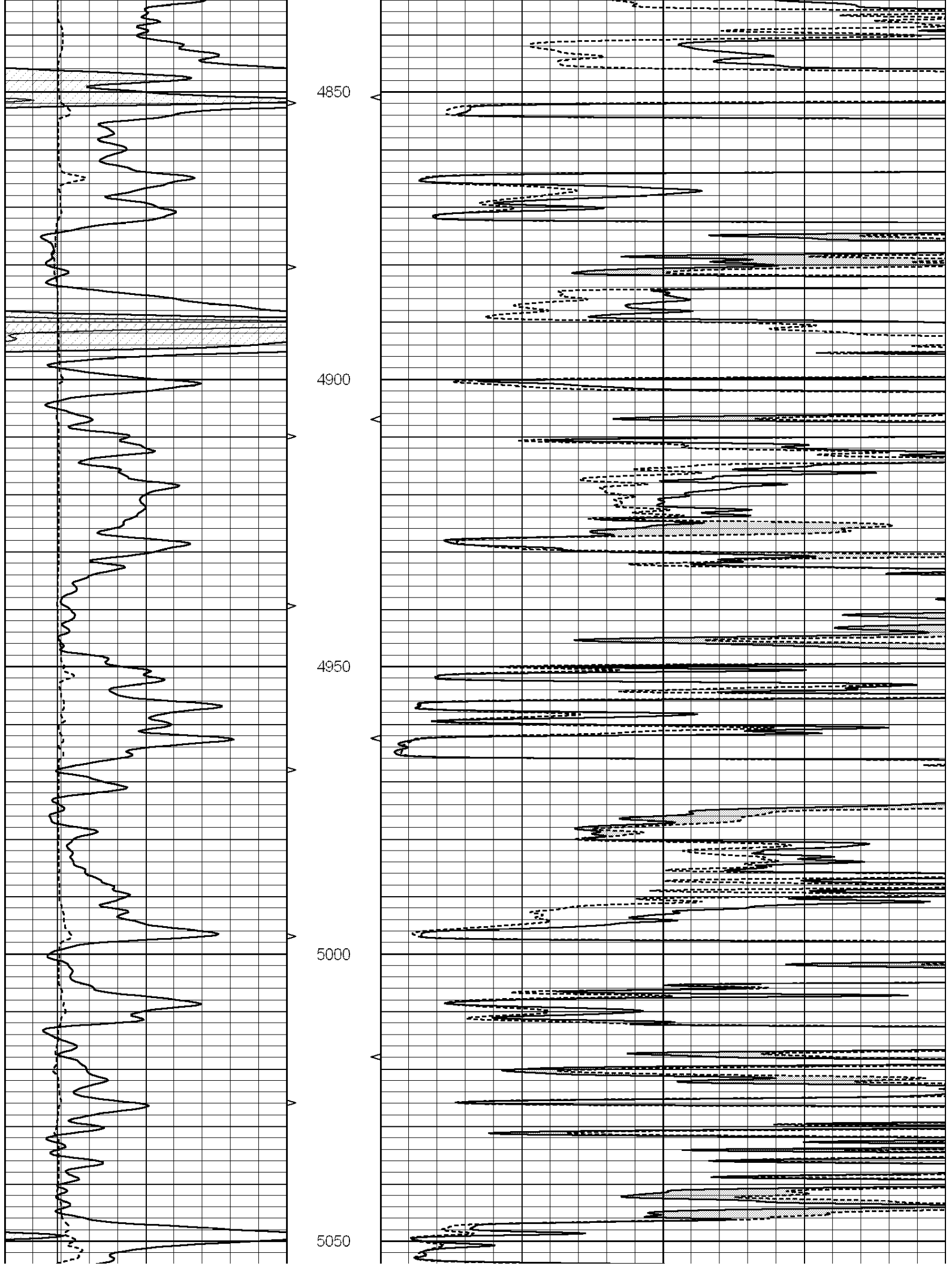
0	GAMMA RAY (GAPI)	150	ABHV	0	MEL1.5 (Ohm-m)	40
6	CALIPER (in)	16	10 (ft3)	0 0	MEL2.0 (Ohm-m)	40
			TBHV			
			0 (ft3)	10		

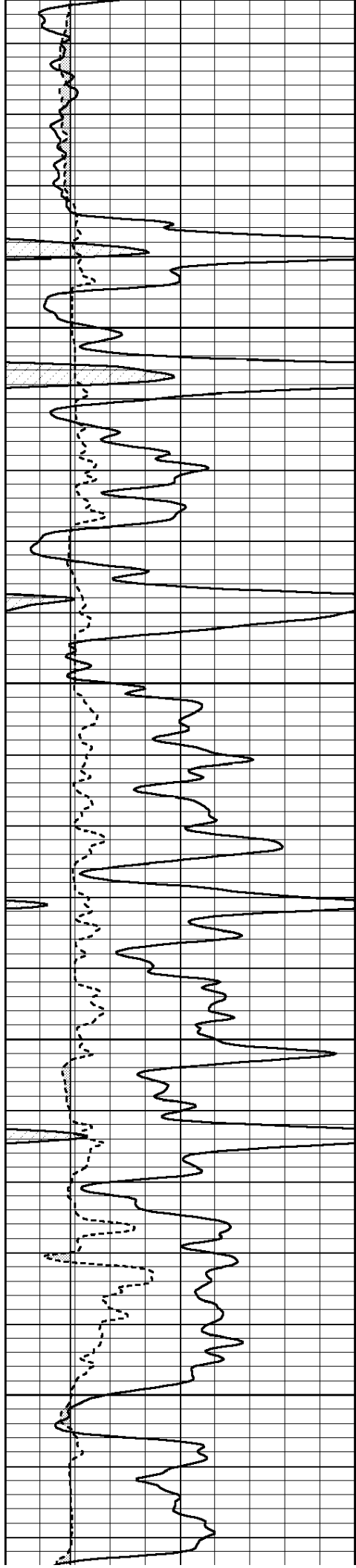










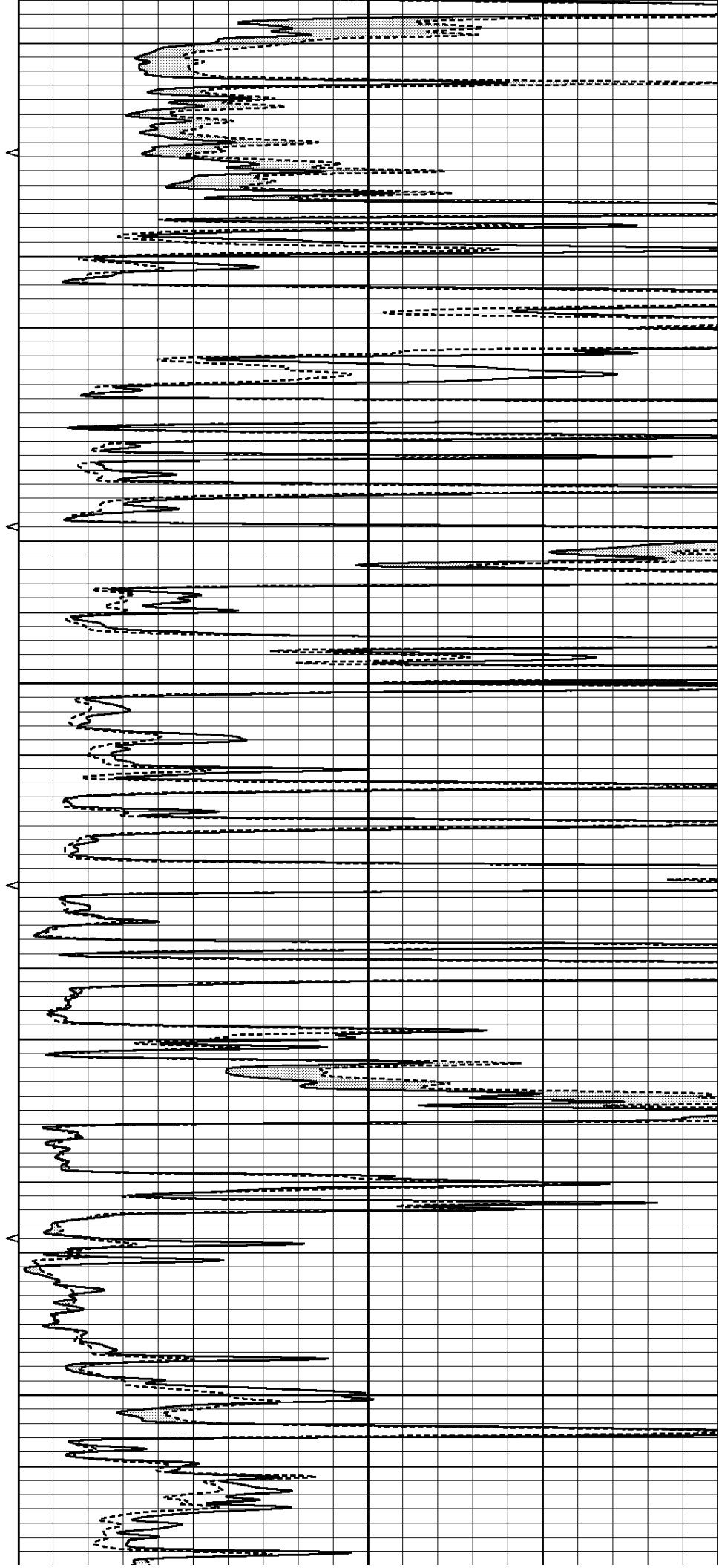


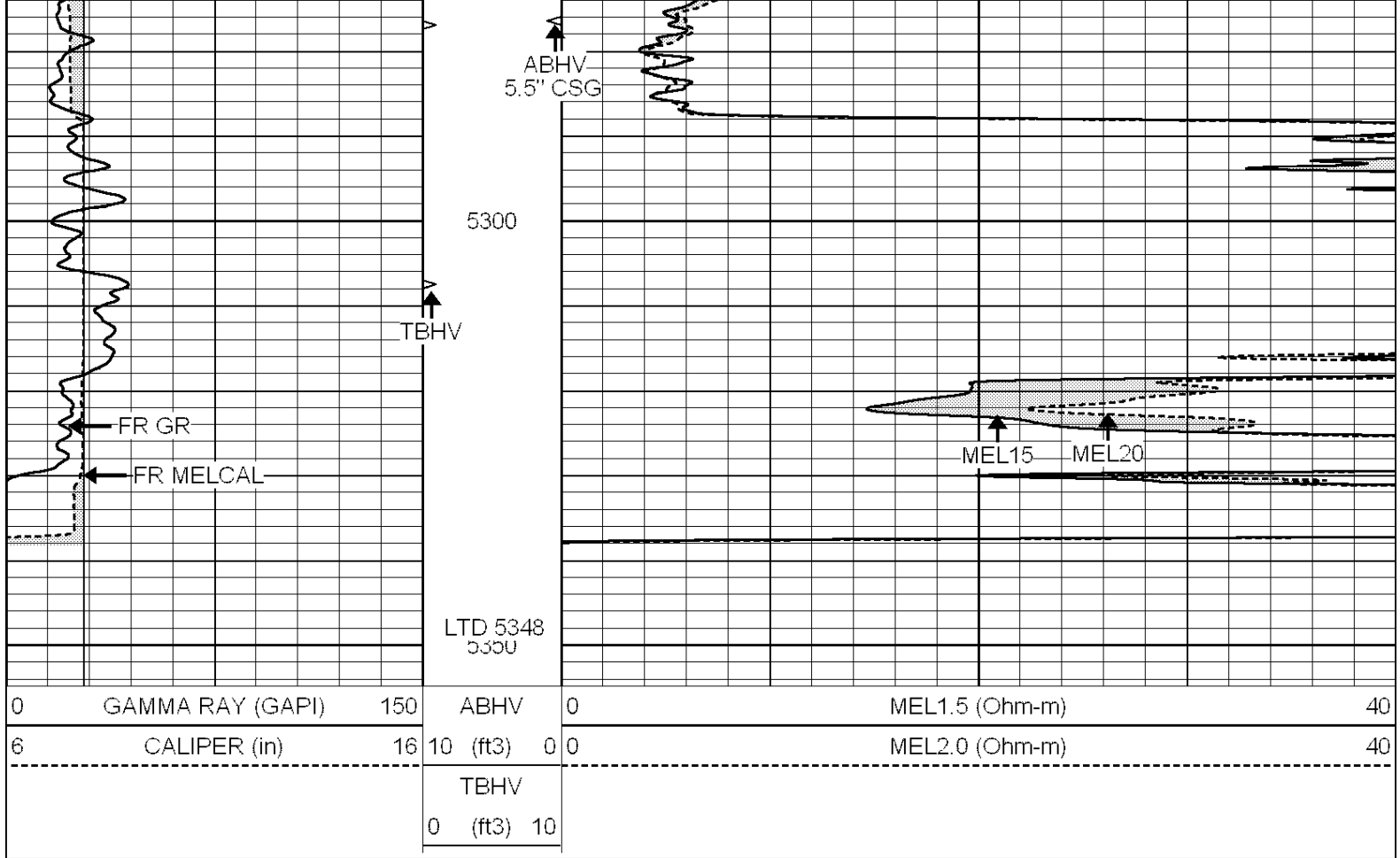
5100

5150

5200

5250



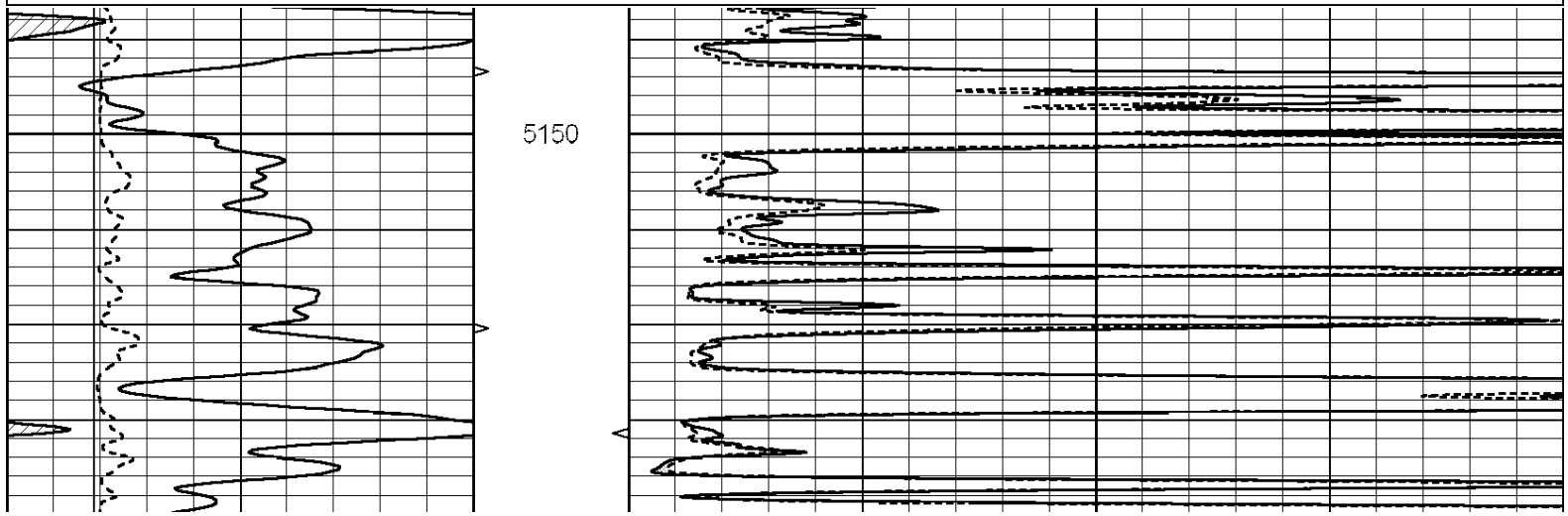


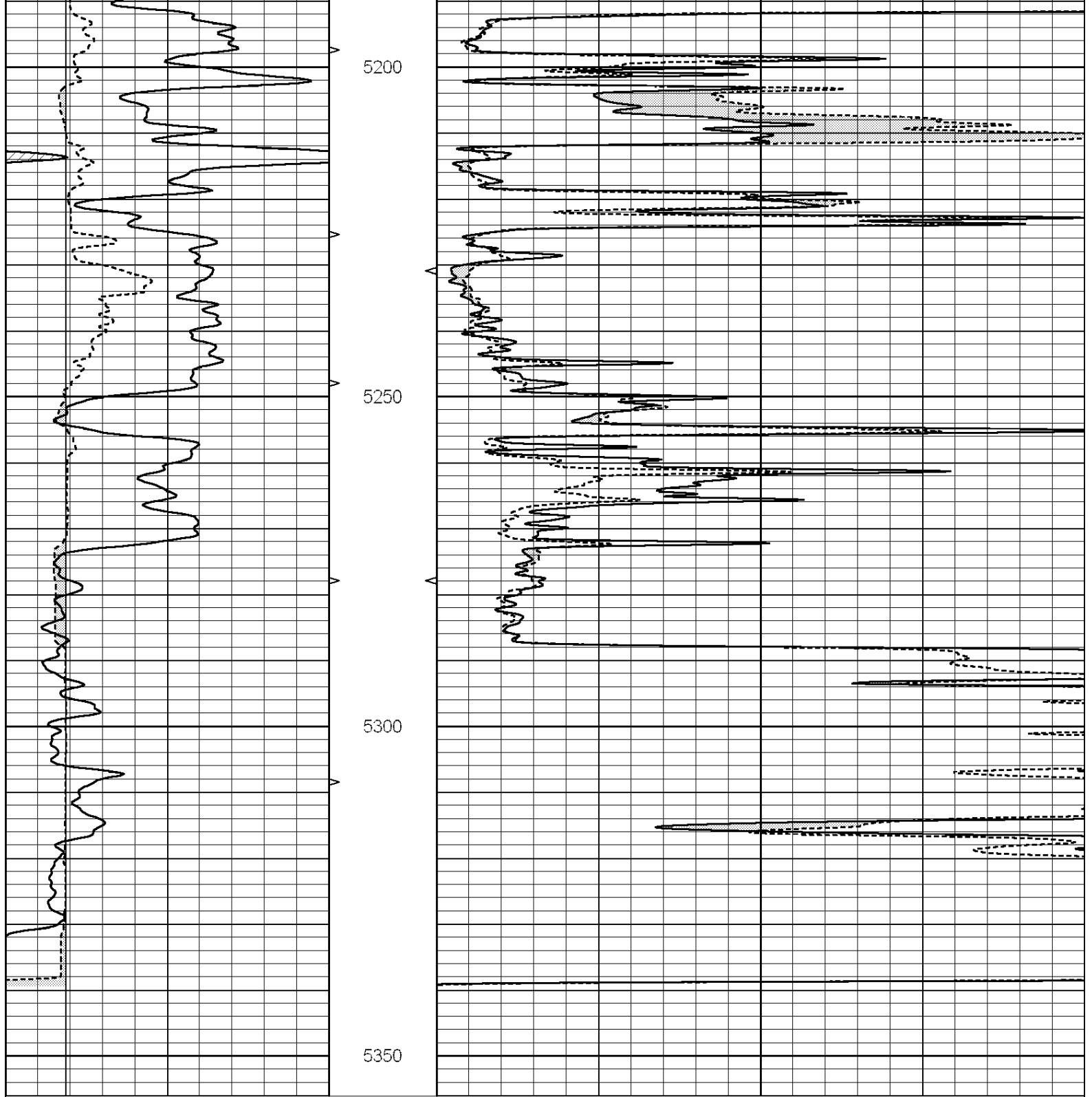
SUPERIOR  
 Hays,  
 Kansas

# REPEAT SECTION

Database File: 006680pe.db  
 Dataset Pathname: pass5.1  
 Presentation Format: \_micro  
 Dataset Creation: Fri Jan 28 07:24:59 2011 by Calc Open-Cased 090629  
 Charted by: Depth in Feet scaled 1:240

0	GAMMA RAY (GAPI)	150	ABHV	0	MEL1.5 (Ohm-m)	40
6	CALIPER (in)	16	10 (ft3)	0 0	MEL2.0 (Ohm-m)	40
			TBHV			
			0 (ft3)	10		





0	GAMMA RAY (GAPI)	150	ABHV	0	MEL1.5 (Ohm-m)	40
6	CALIPER (in)	16	10 (ft)	0	MEL2.0 (Ohm-m)	40
			TBHV			
			0 (ft)	10		

Calibration Report

Database File: 006680pe.db  
 Dataset Pathname: pass5.1  
 Dataset Creation: Fri Jan 28 07:24:59 2011 by Calc Open-Cased 090629

MICRO Calibration Report

Serial Number: MICRO6

Tool Model: PROBE  
Performed: Wed Jan 19 06:40:00 2011

Caliper Calibration:	Gain=5.211	Offset=1.360
References	Low Cal	High Cal
Readings	8.000	14.000
	1.178	2.330

1.5" Calibration:	Gain=75.000	Offset=-1.600
References	Low Cal	High Cal
Readings	0.000	20.000
	0.008	1.200

2" Calibration:	Gain=65.000	Offset=-0.700
References	Low Cal	High Cal
Readings	0.000	20.000
	0.008	0.888

#### Gamma Ray Calibration Report

Serial Number: GR6  
Tool Model: OPEN  
Performed: Wed Jan 26 17:48:58 2011

Calibrator Value:	150.0	GAPI
Background Reading:	0.0	cps
Calibrator Reading:	276.0	cps
Sensitivity:	0.9035	GAPI/cps