



SUPERIOR
Hays,
Kansas

SONIC
LOG

Company CORAL COAST PETROLEUM, LLC
Well #1 "A" STEPHENS
Field MORRISON NORTHEAST
County CLARK
State KANSAS

Company CORAL COAST PETROLEUM, LLC.
Well #1 "A" STEPHENS
Field MORRISON NORTHEAST
County CLARK State KANSAS

Location: API # : 15-025-21522-0000
1650' FSL & 2310' FWL
SE - NE - SW
SEC 10 TWP 32S RGE 21W
Permanent Datum GROUND LEVEL Elevation 1988
Log Measured From KELLY BUSHING 9' A.G.L.
Drilling Measured From KELLY BUSHING
Other Services
CDL/CNL/PE
DIL/MEL
Elevation
K.B. 1997
D.F. 1995
G.L. 1988

Date	1/28/11		
Run Number	TWO		
Depth Driller	5340		
Depth Logger	5348		
Bottom Logged Interval	5338		
Top Log Interval	620		
Casing Driller	8 5/8 @ 639		
Casing Logger	636		
Bit Size	7 7/8		
Type Fluid in Hole	CHEMICAL MUD	CHLORIDES 6500 PPM	
Density / Viscosity	9.157		
pH / Fluid Loss	9.0/8.8		
Source of Sample	FLOWLINE		
Rin @ Meas. Temp	.75 @ 54F		
Rmf @ Meas. Temp	.56 @ 54F		
Rmc @ Meas. Temp	.90 @ 54F		
Source of Rmf / Rmc	MEASURED		
Rin @ BHT	.31 @ 128F		
Time Circulation Stopped	3 HOURS		
Time Logger on Bottom			
Maximum Recorded Temperature	128F		
Equipment Number	680		
Location	HAYS, KS.		
Recorded By	JASON CAPPELLUCCI		
Witnessed By	SEAN DEENIHAN		

<<< Fold Here >>>

All interpretations are opinions based on inferences from electrical or other measurements and we cannot and do not guarantee the accuracy or correctness of any interpretation, and we shall not, except in the case of gross or willful negligence on our part, be liable or responsible for any loss, costs, damages, or expenses incurred or sustained by anyone resulting from any interpretation made by any of our officers, agents or employees. These interpretations are also subject to our general terms and conditions set out in our current Price Schedule.

Comments

THANK YOU FOR USING SUPERIOR WELL SERVICE (785) 628-6395
DIRECTIONS
PROTECTION, KS. - 6 E. - 4 MILES N. INTO

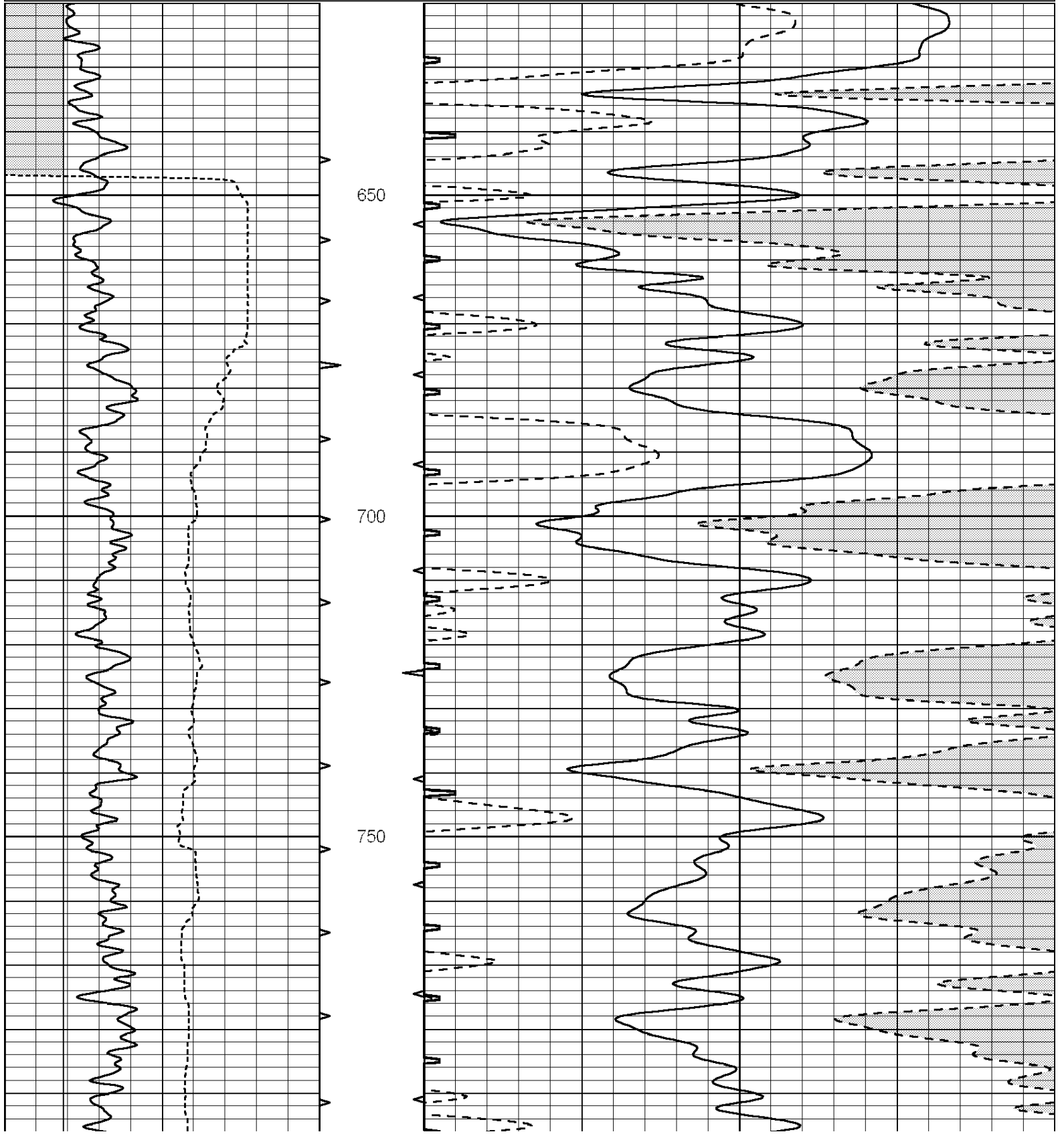


SUPERIOR
Hays,
Kansas

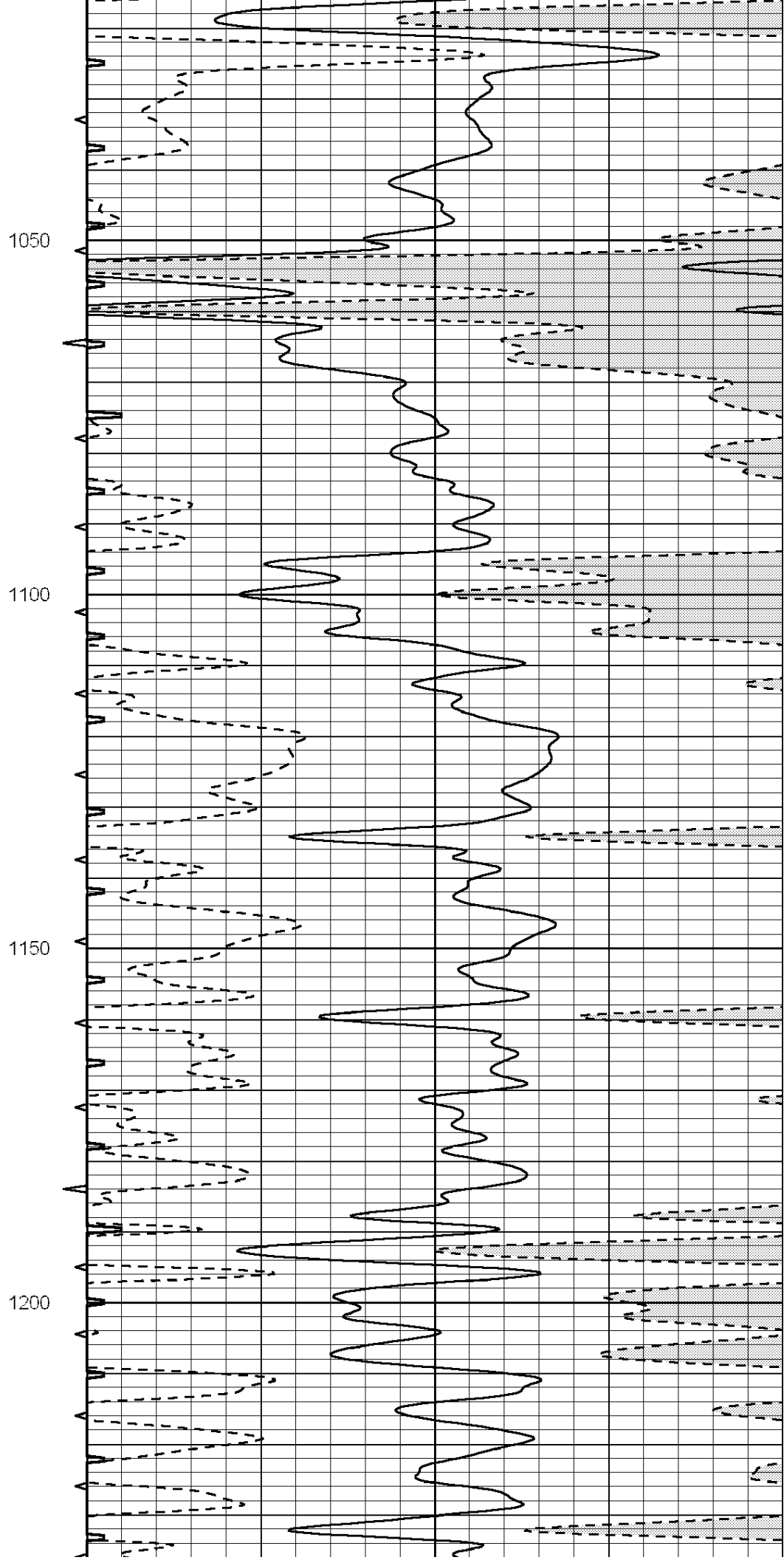
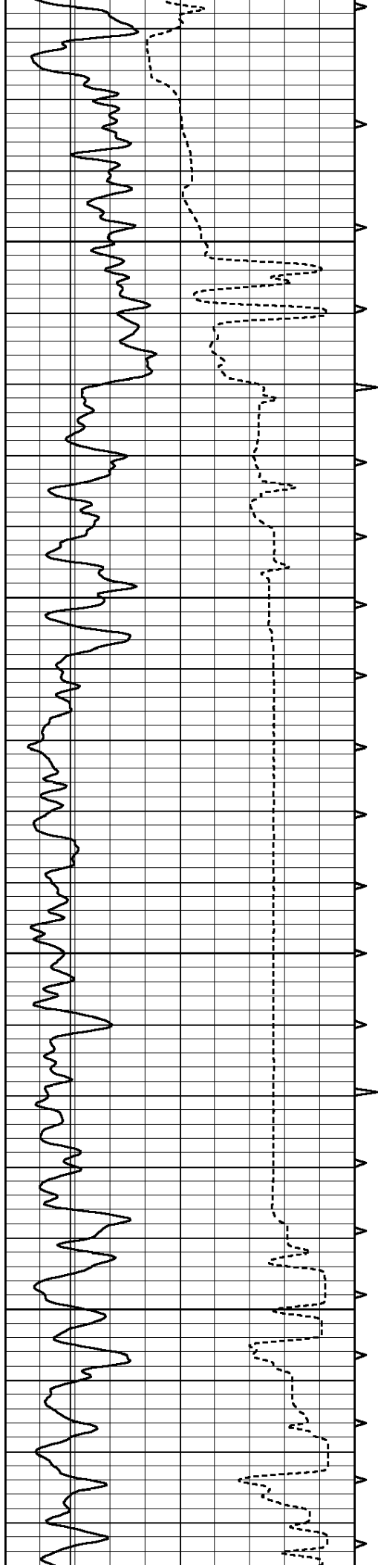
MAIN SECTION

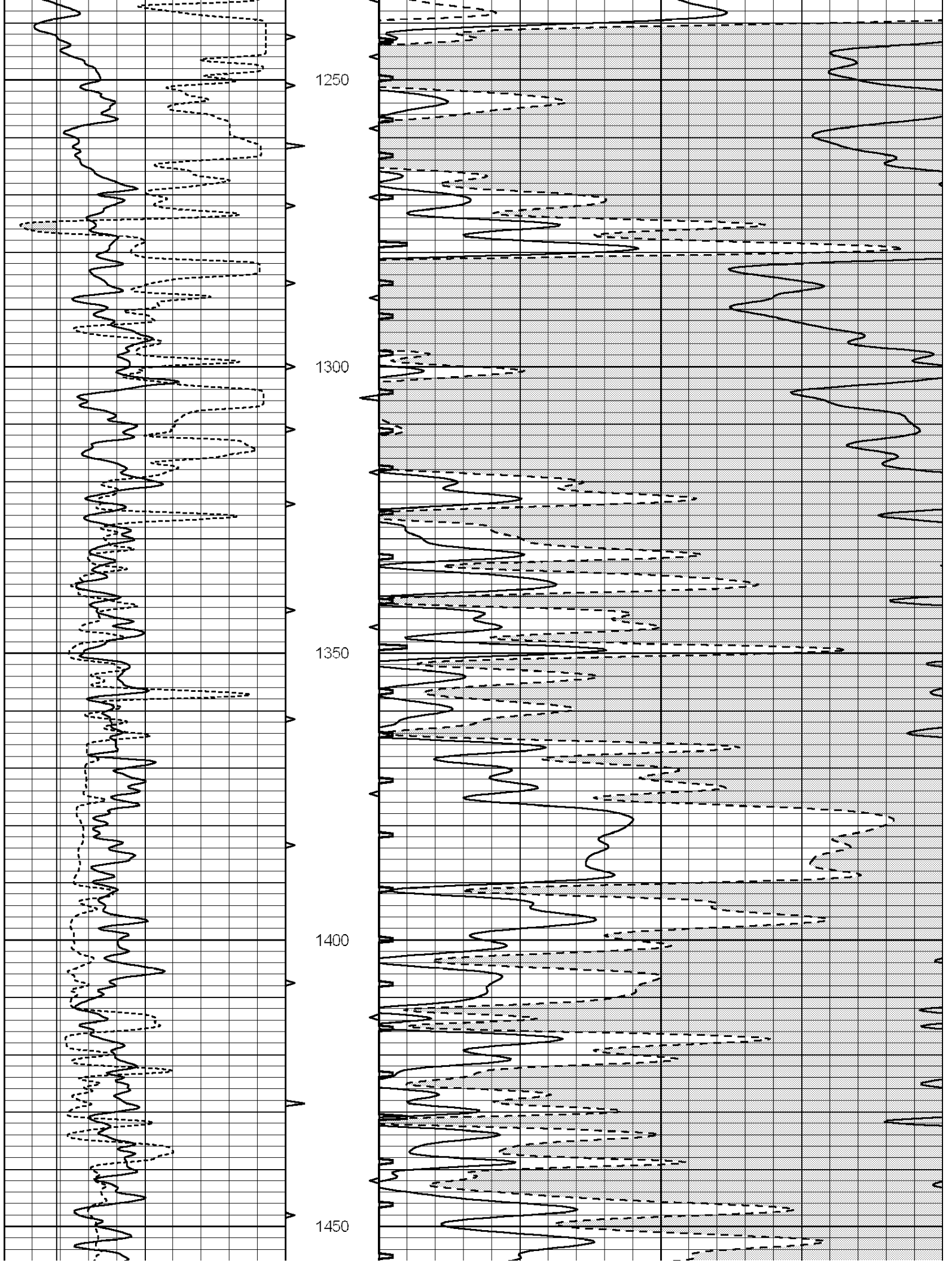
Database File: 006680pe.db
 Dataset Pathname: pass6.2
 Presentation Format: _slt
 Dataset Creation: Fri Jan 28 08:27:24 2011 by Calc Open-Cased 090629
 Charted by: Depth in Feet scaled 1:240

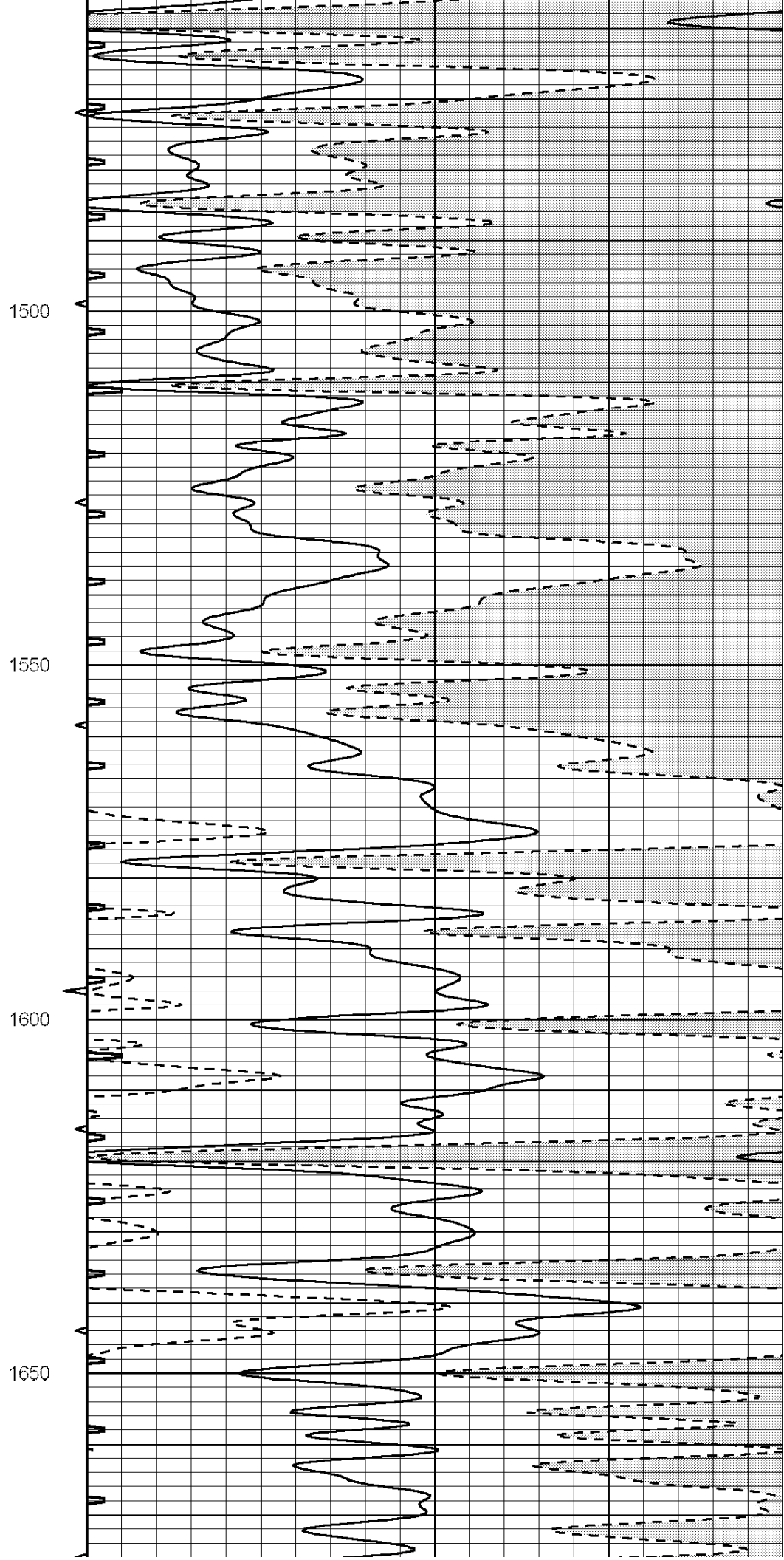
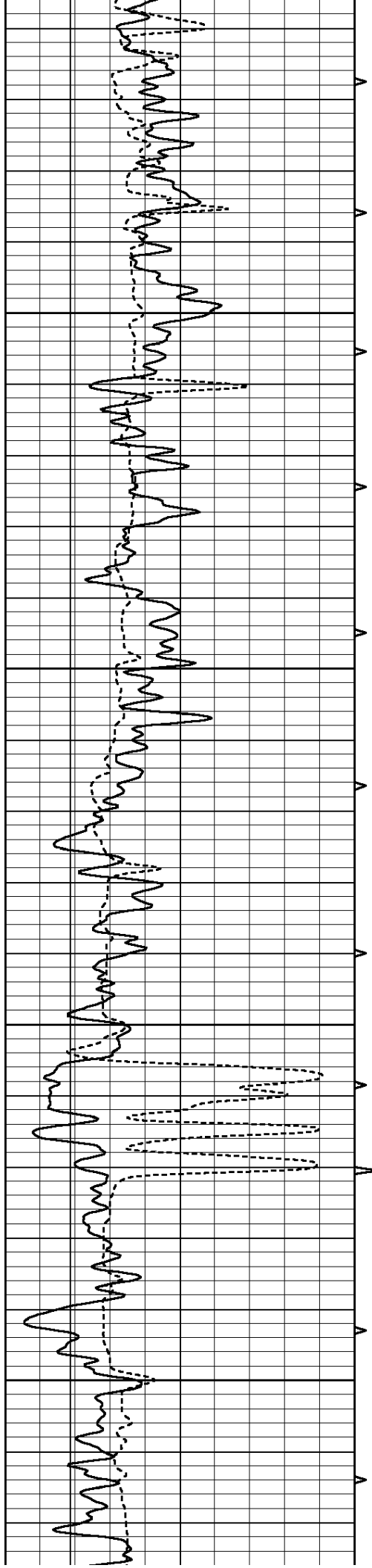
0	GAMMA RAY (GAPI)	150	ABHV	140	DELTA TIME (usec/ft)	40
6	CALIPER (in)	16	10 (ft3) 0	30	SONIC POROSITY (pu)	-10
-----			TBHV	0	ITT (msec)	20
-----			0 (ft3) 10			

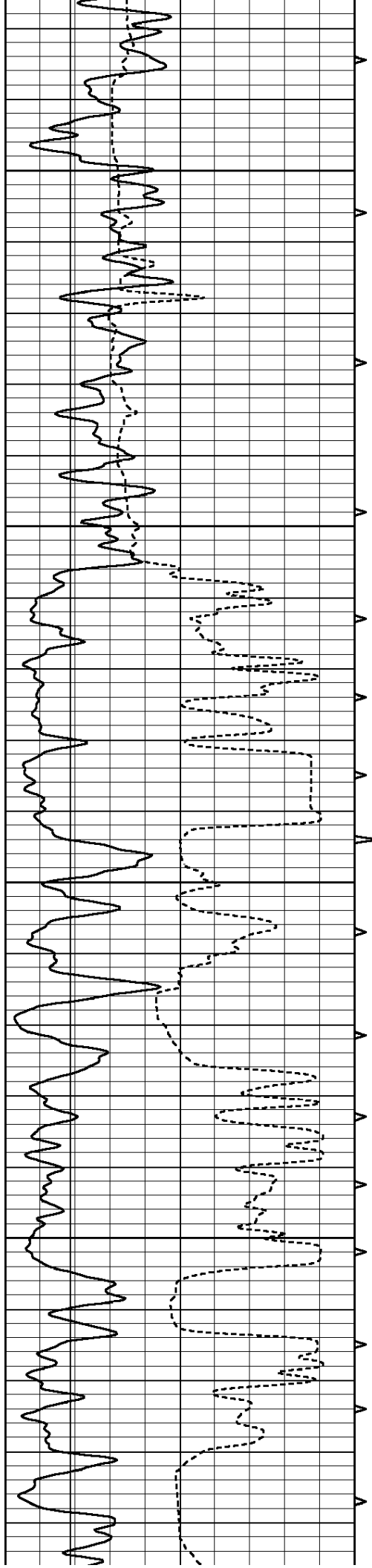










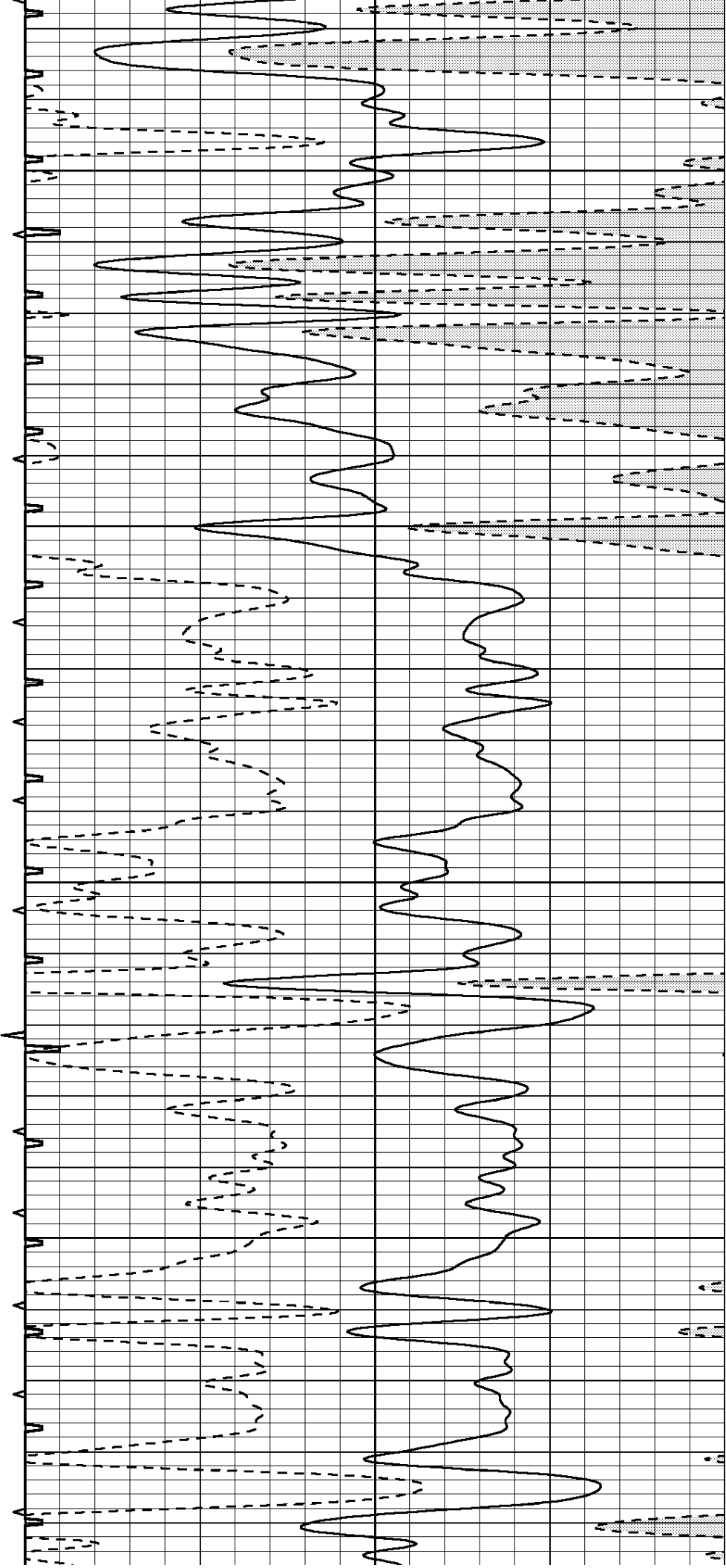


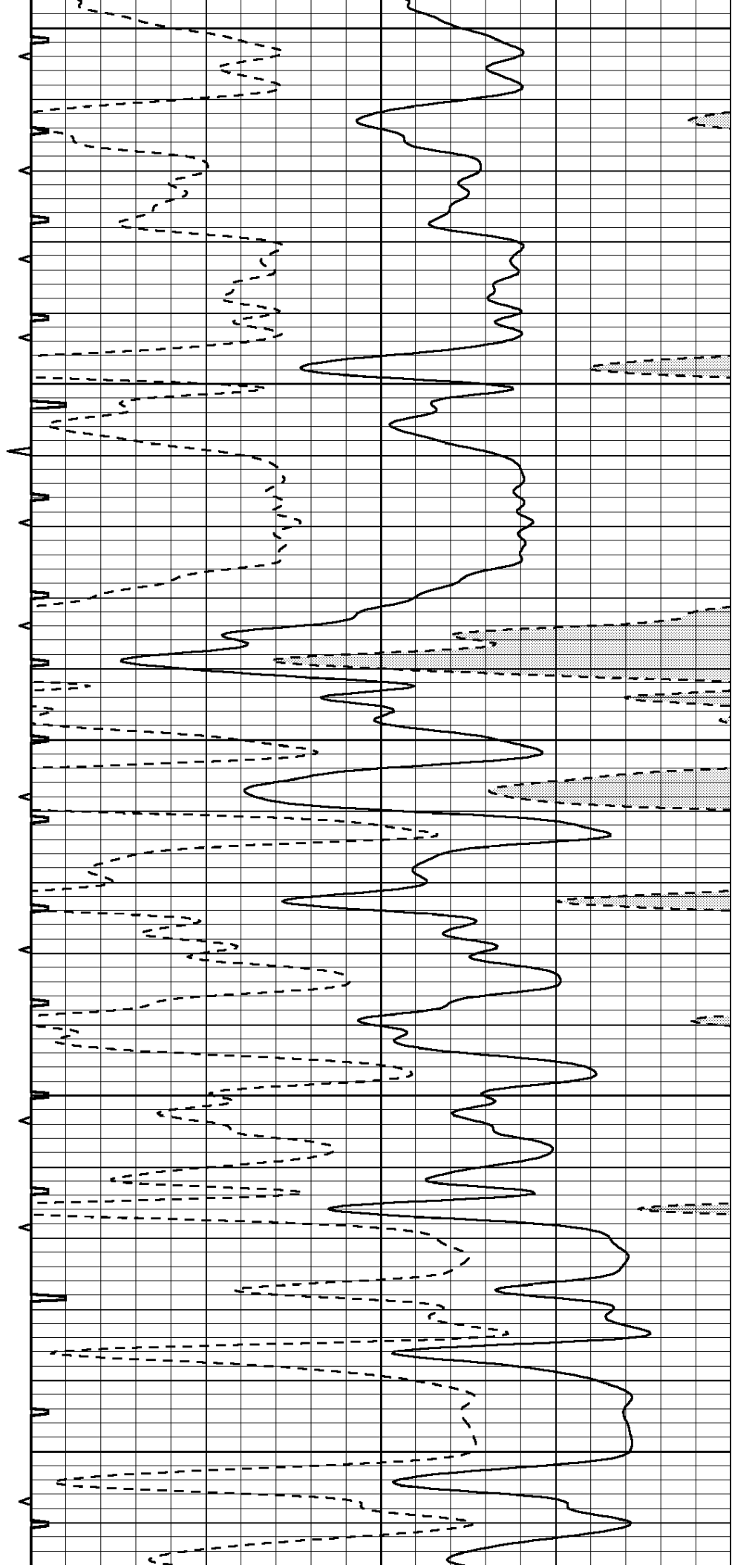
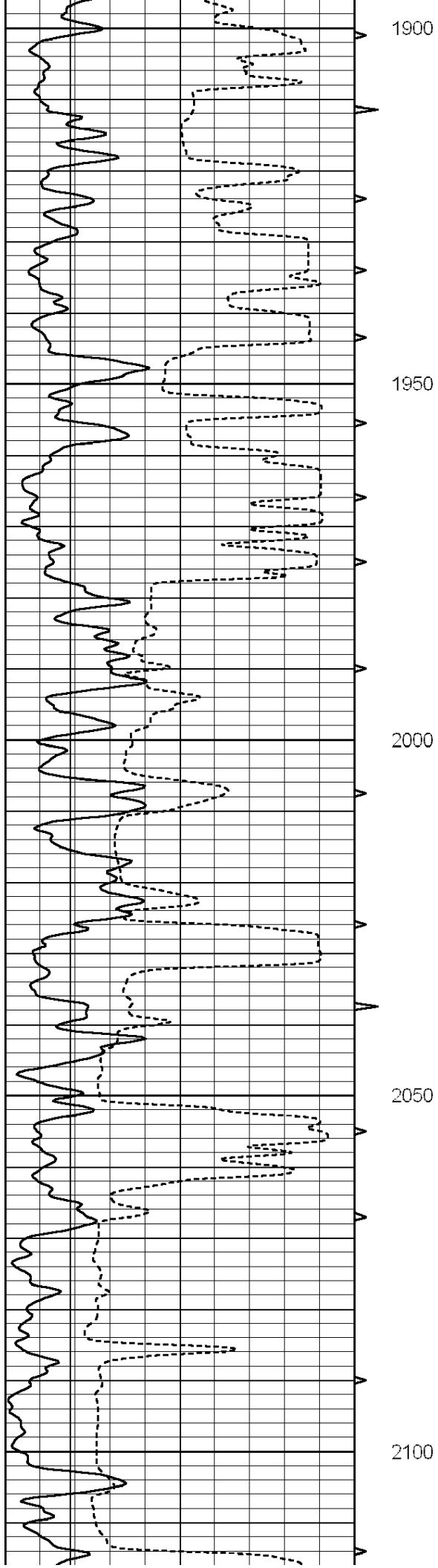
1700

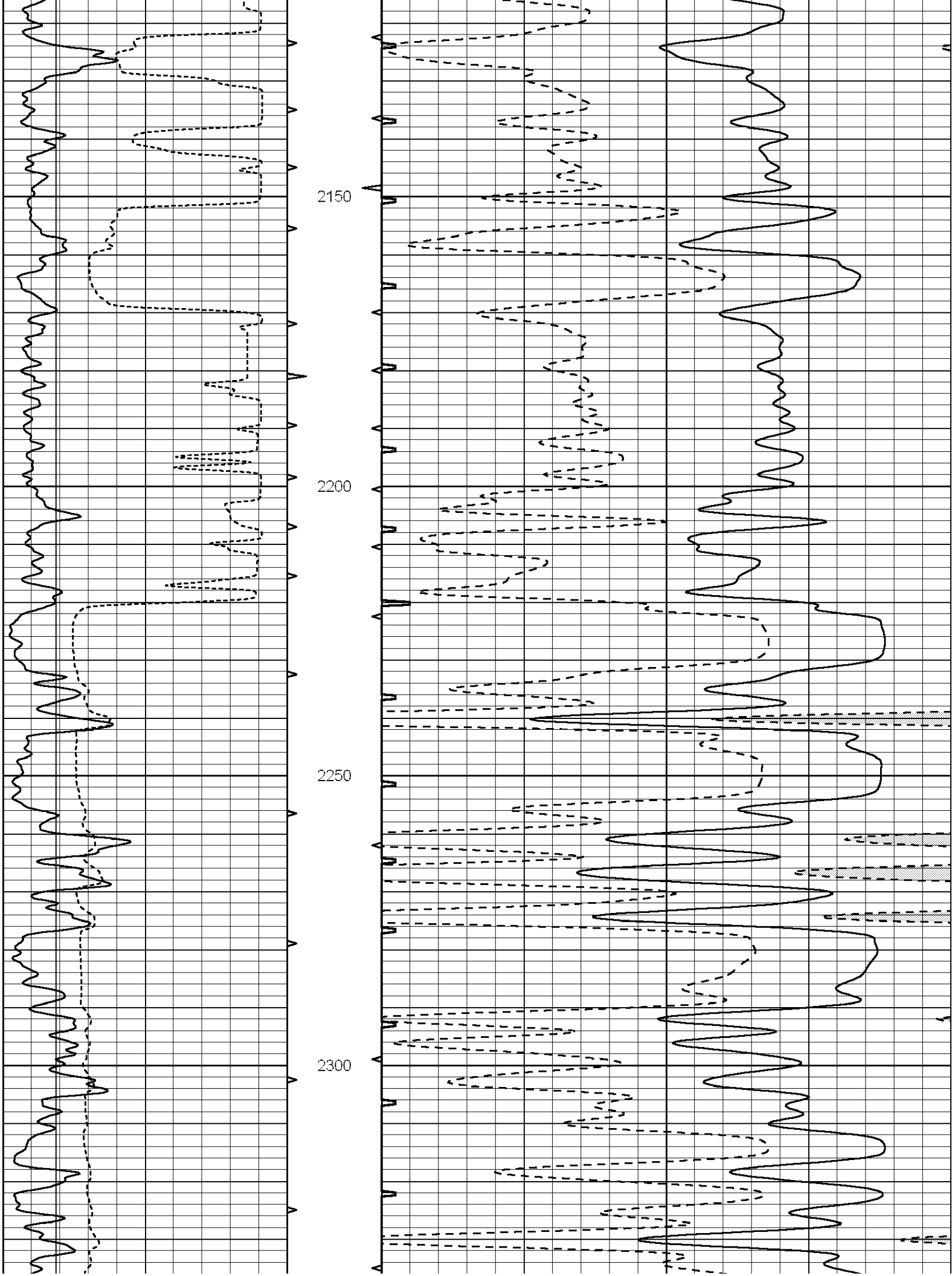
1750

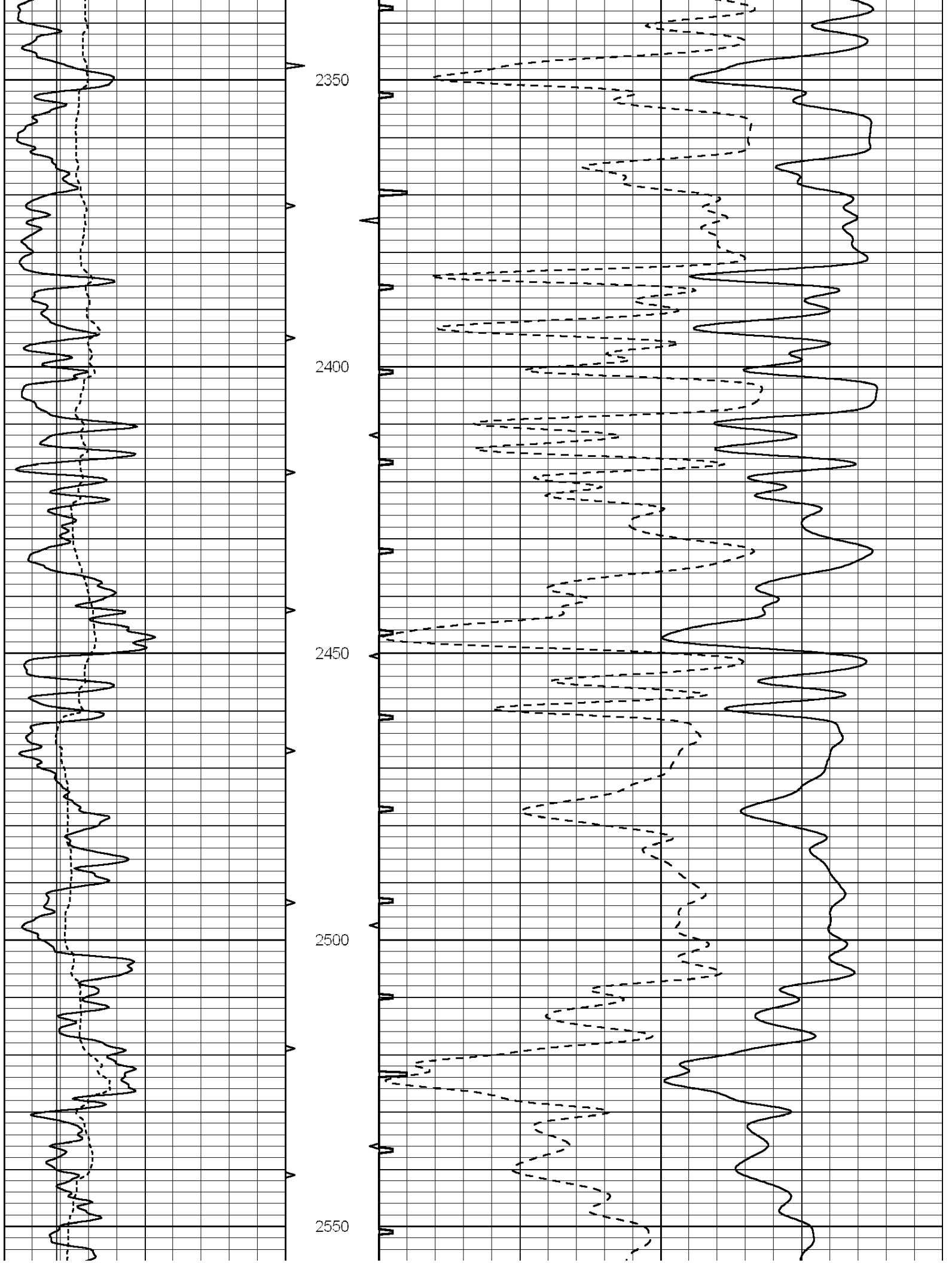
1800

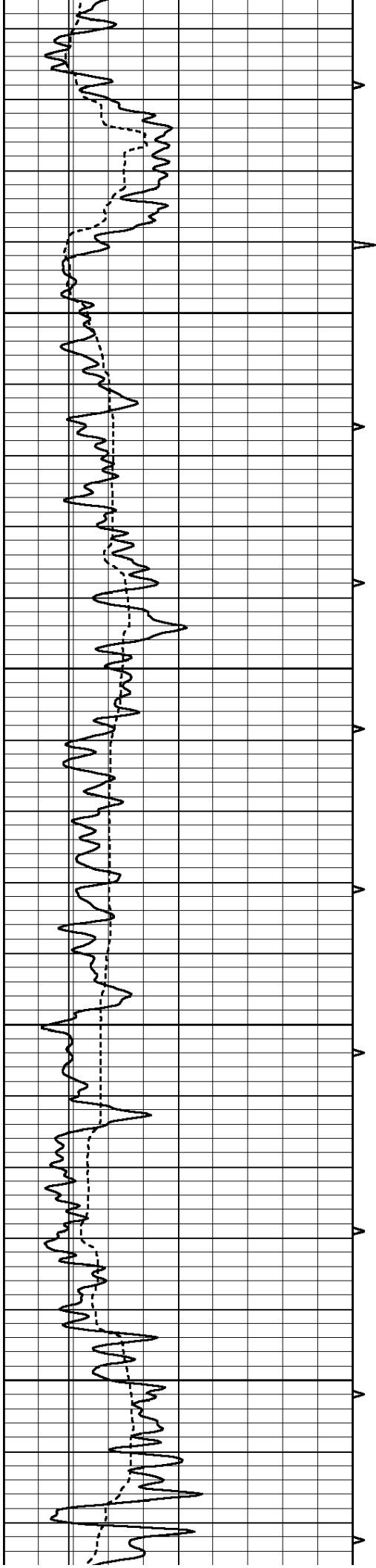
1850









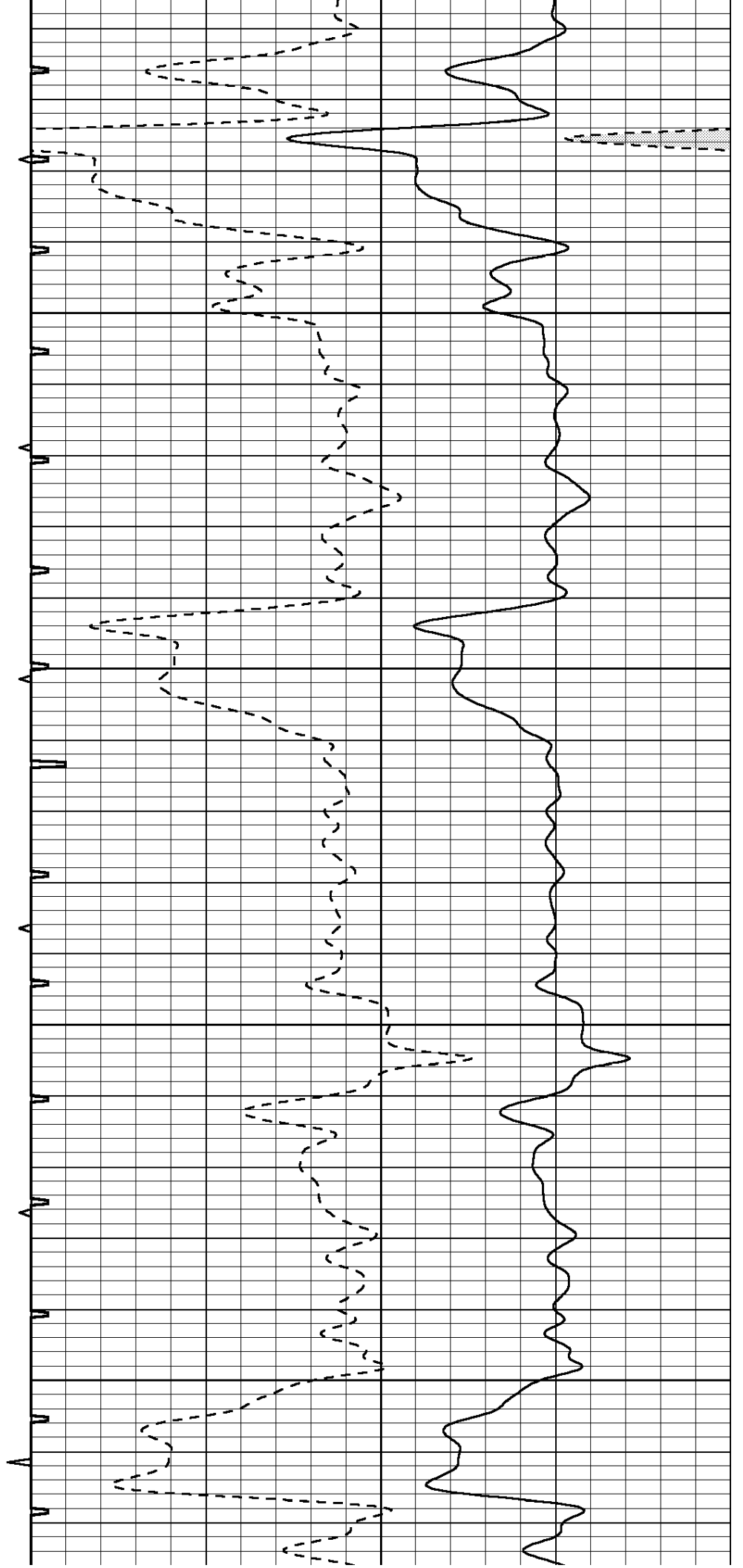


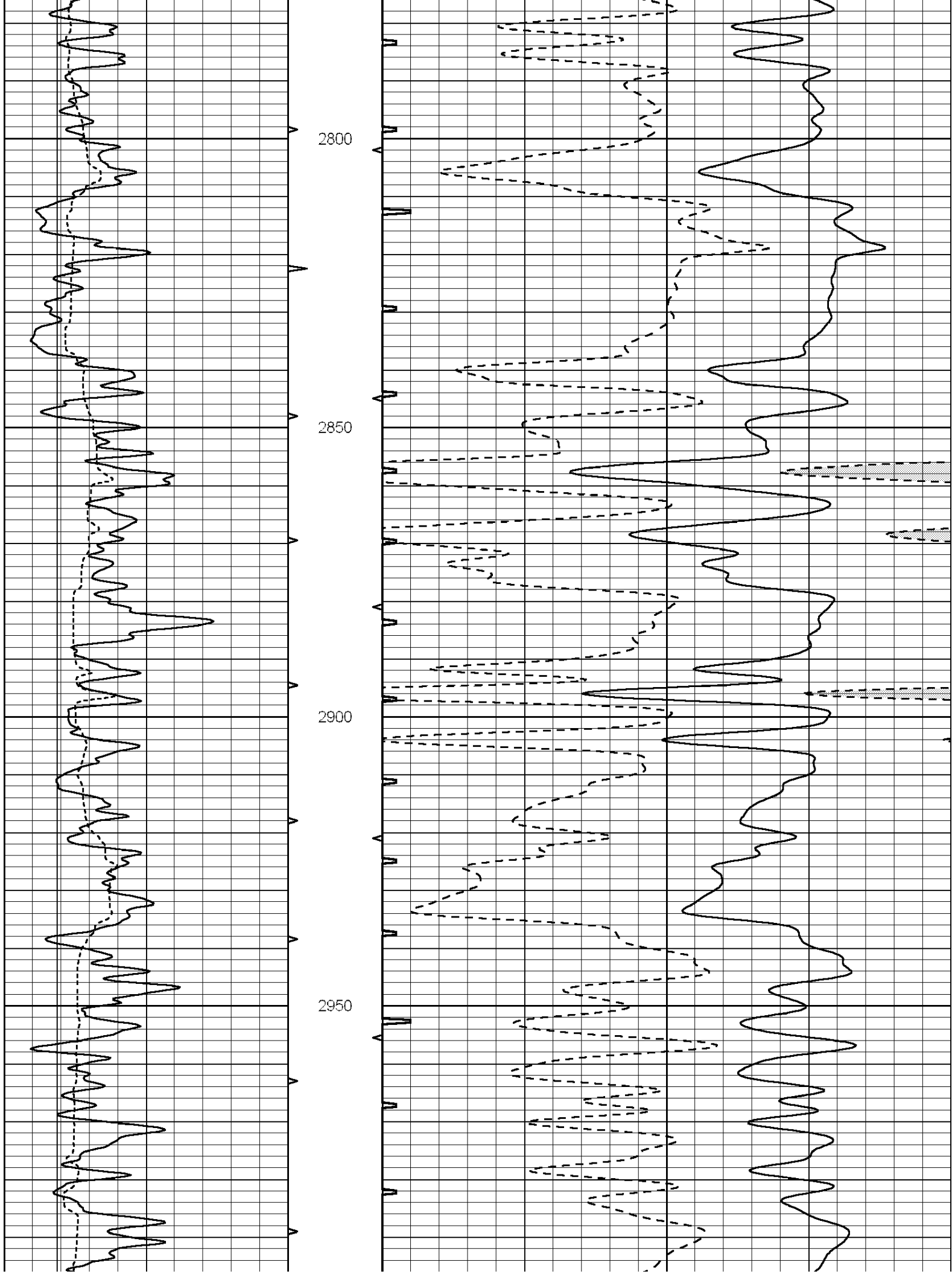
2600

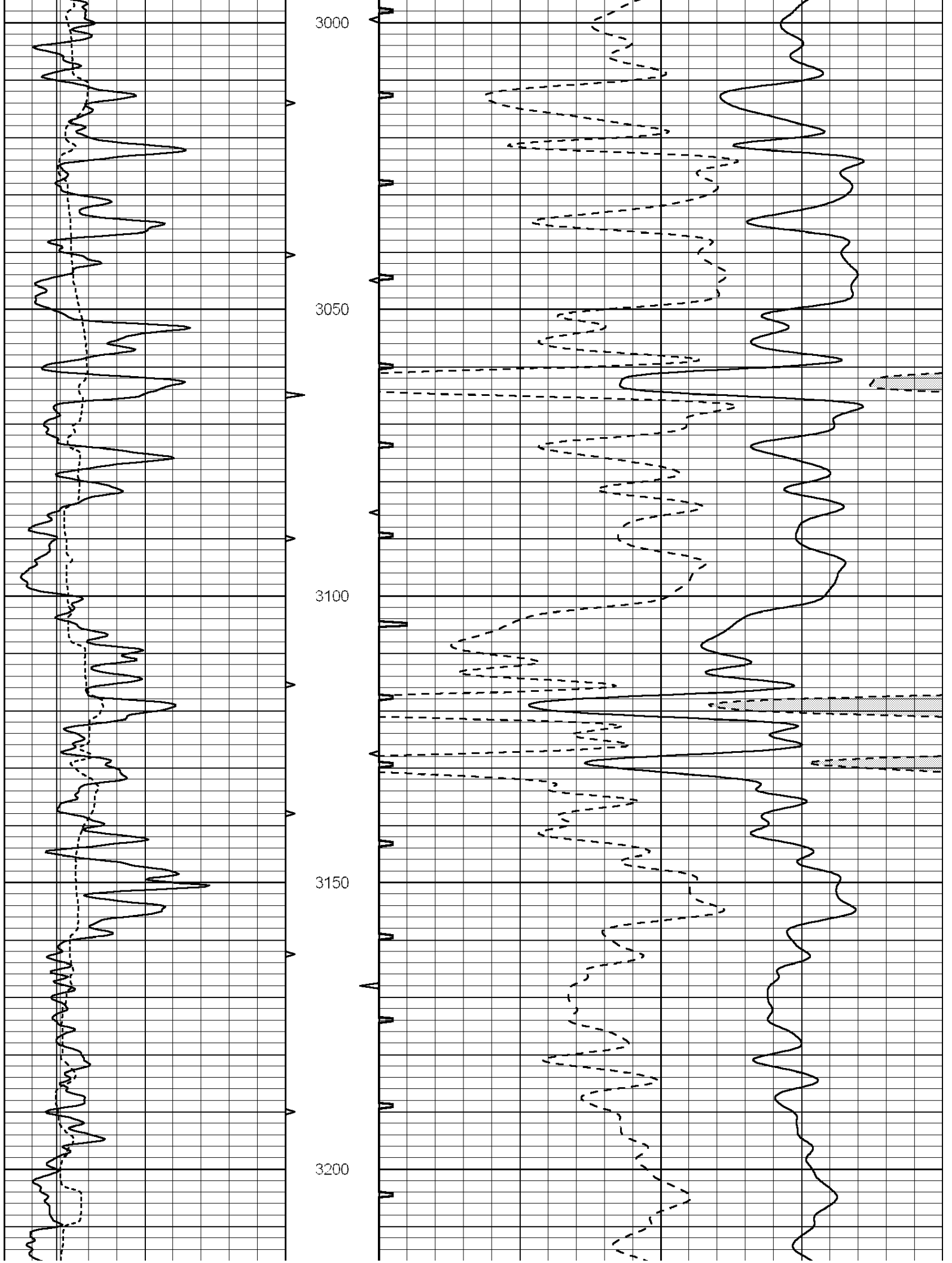
2650

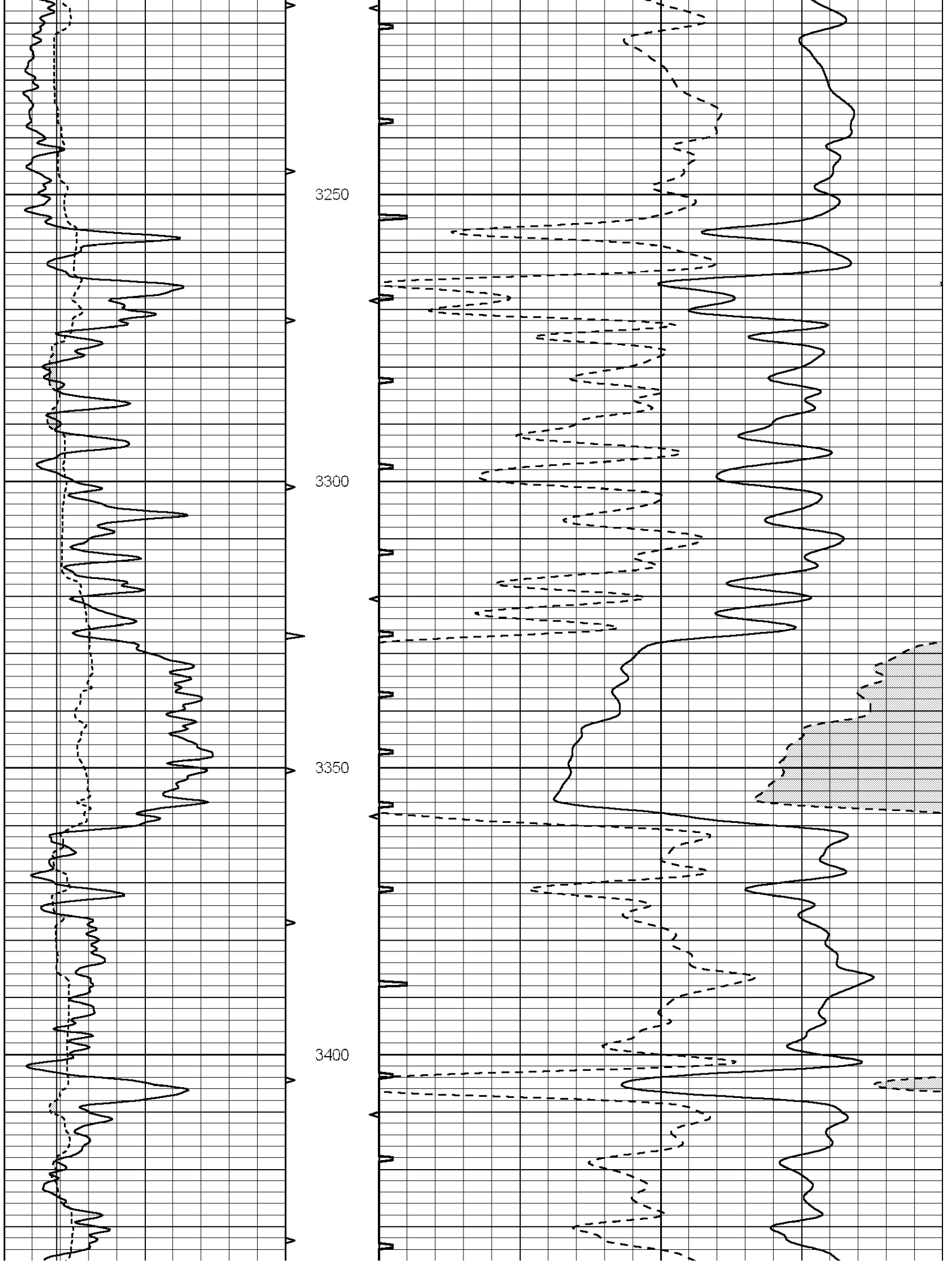
2700

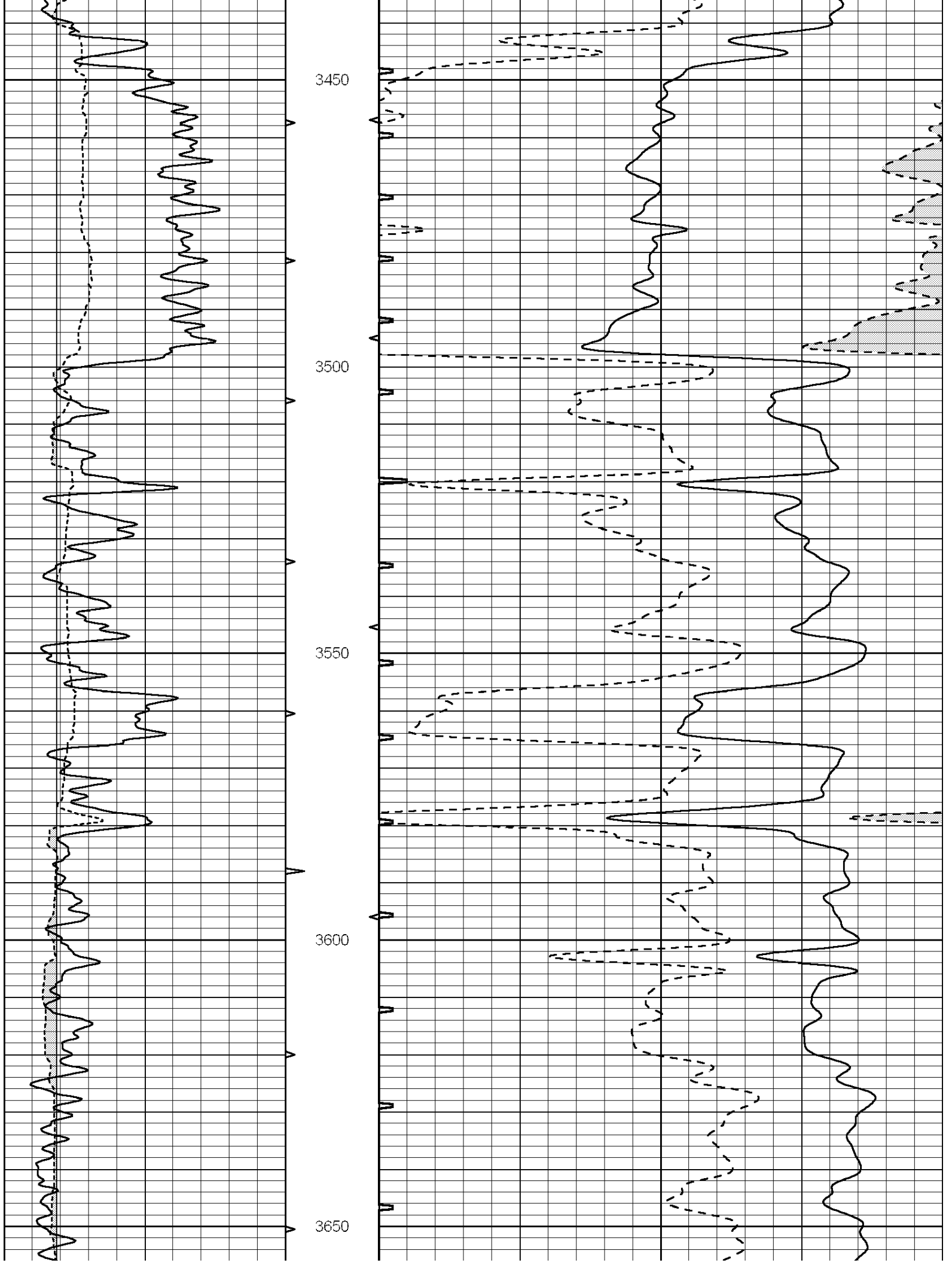
2750

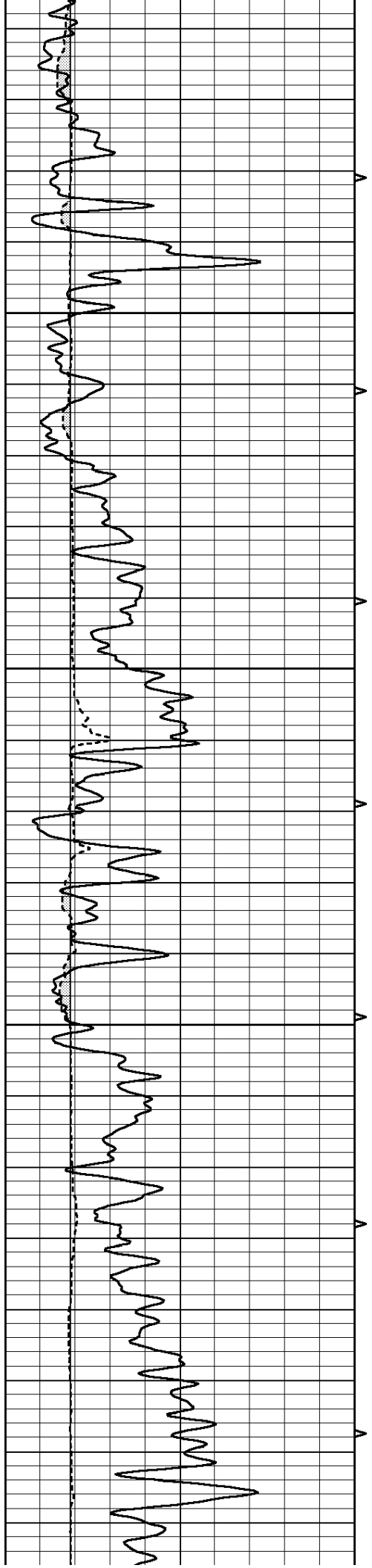










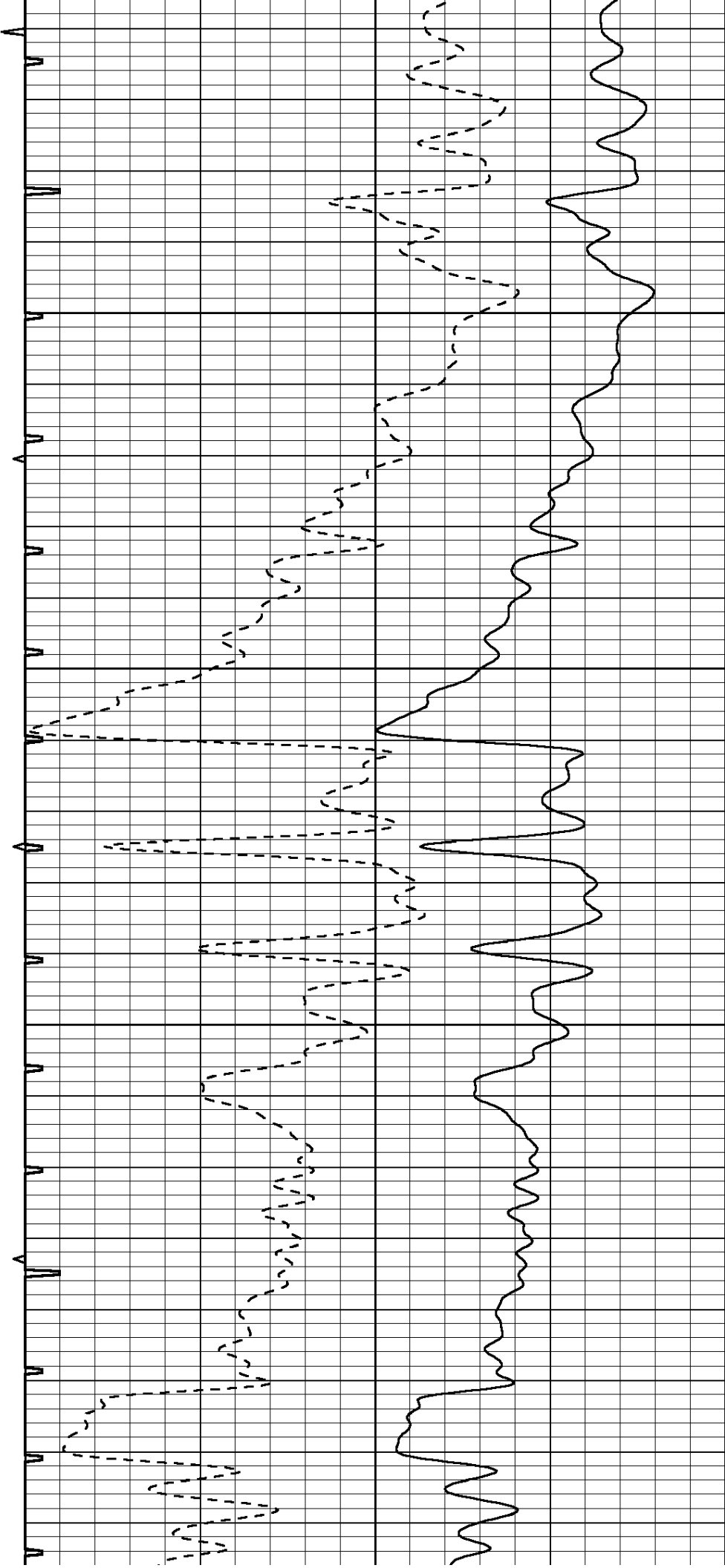


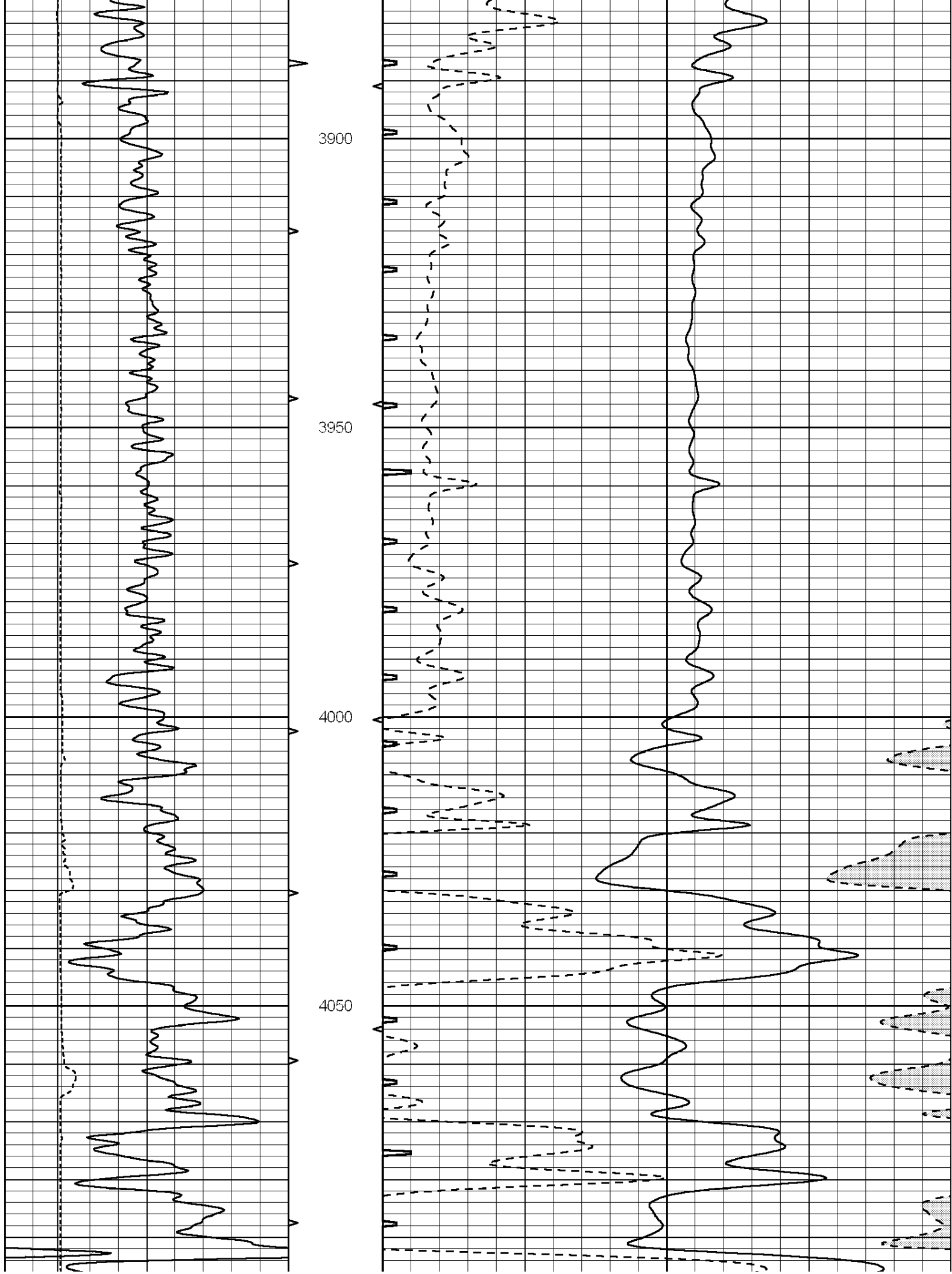
3700

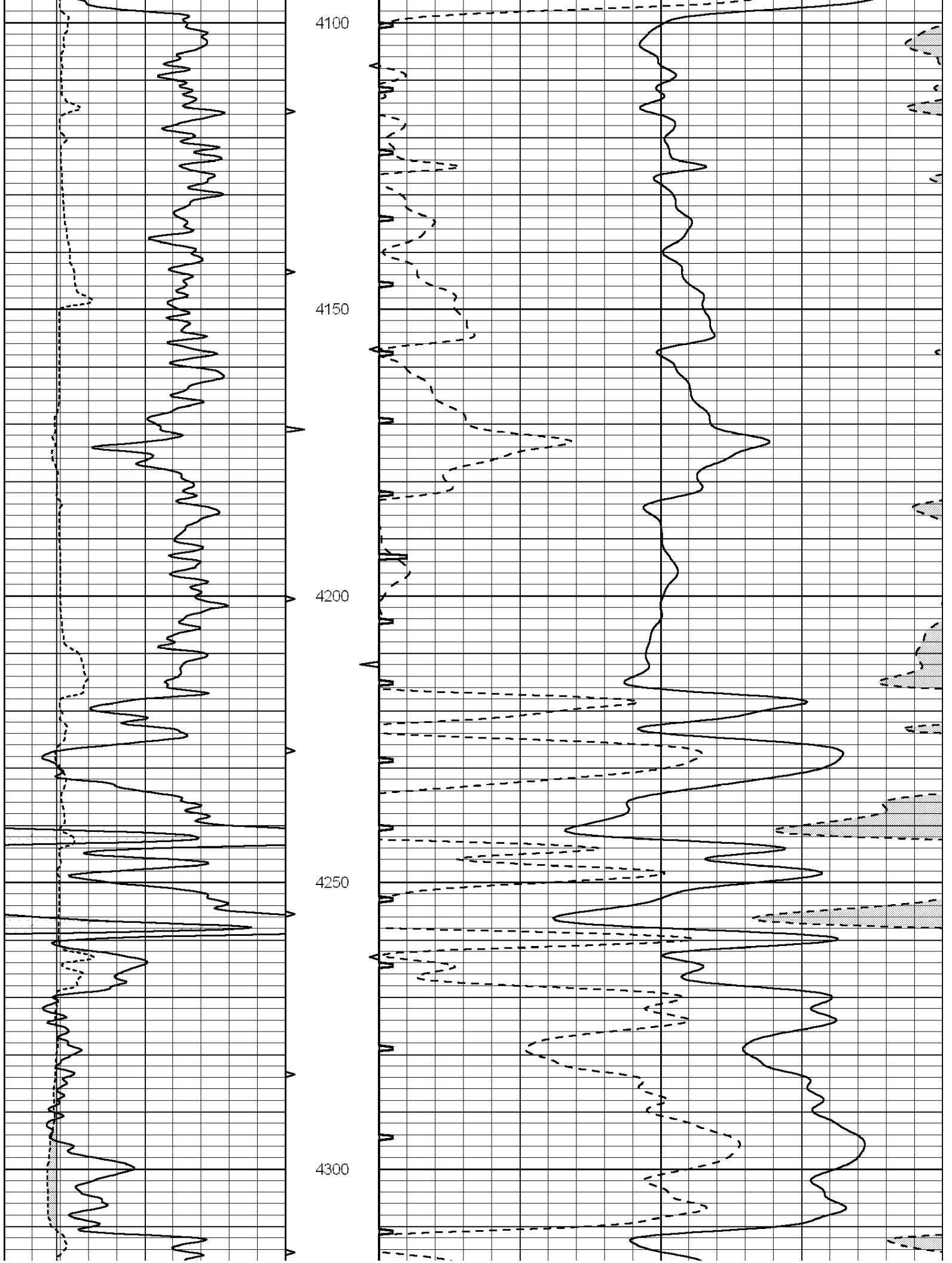
3750

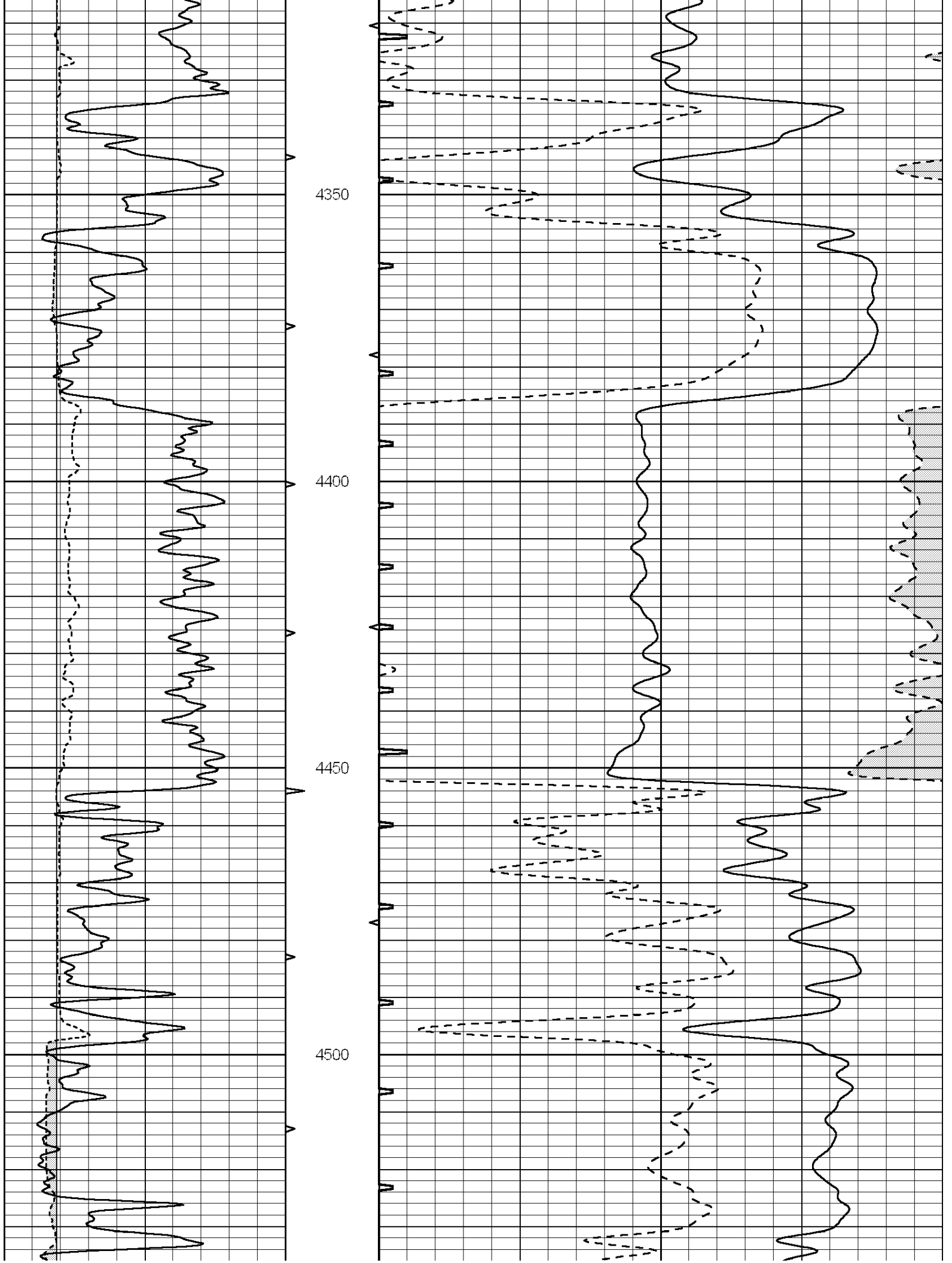
3800

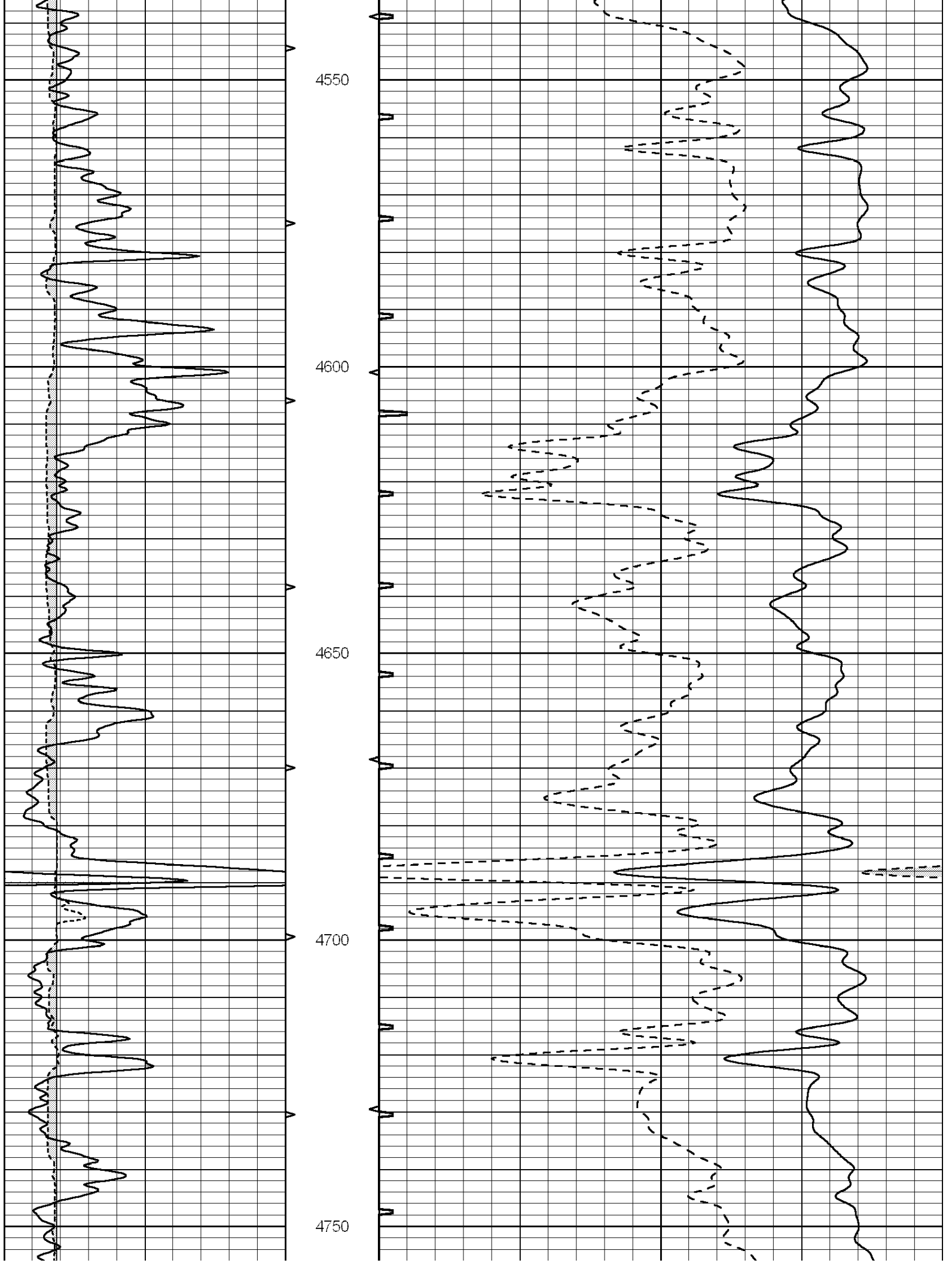
3850

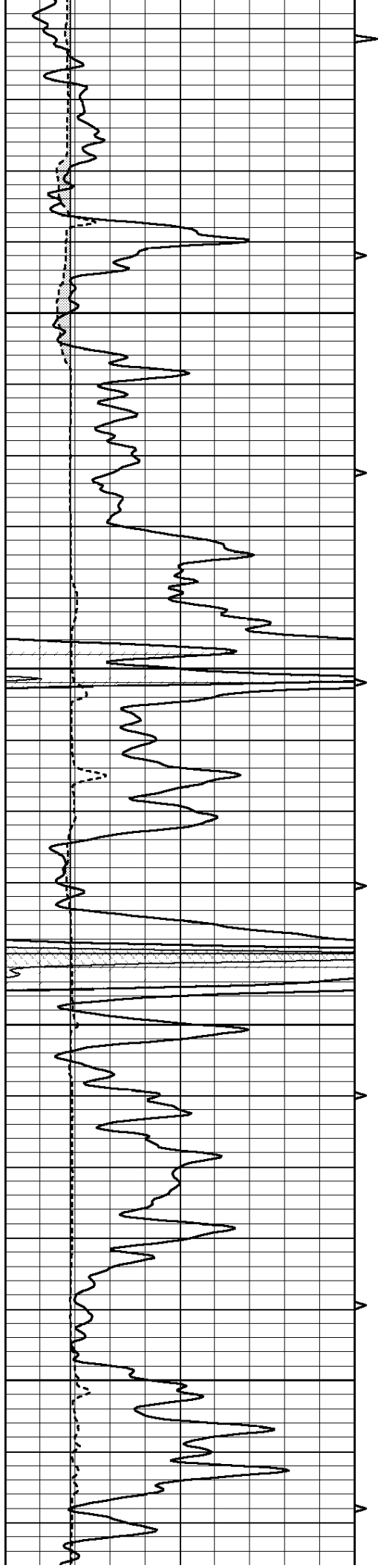










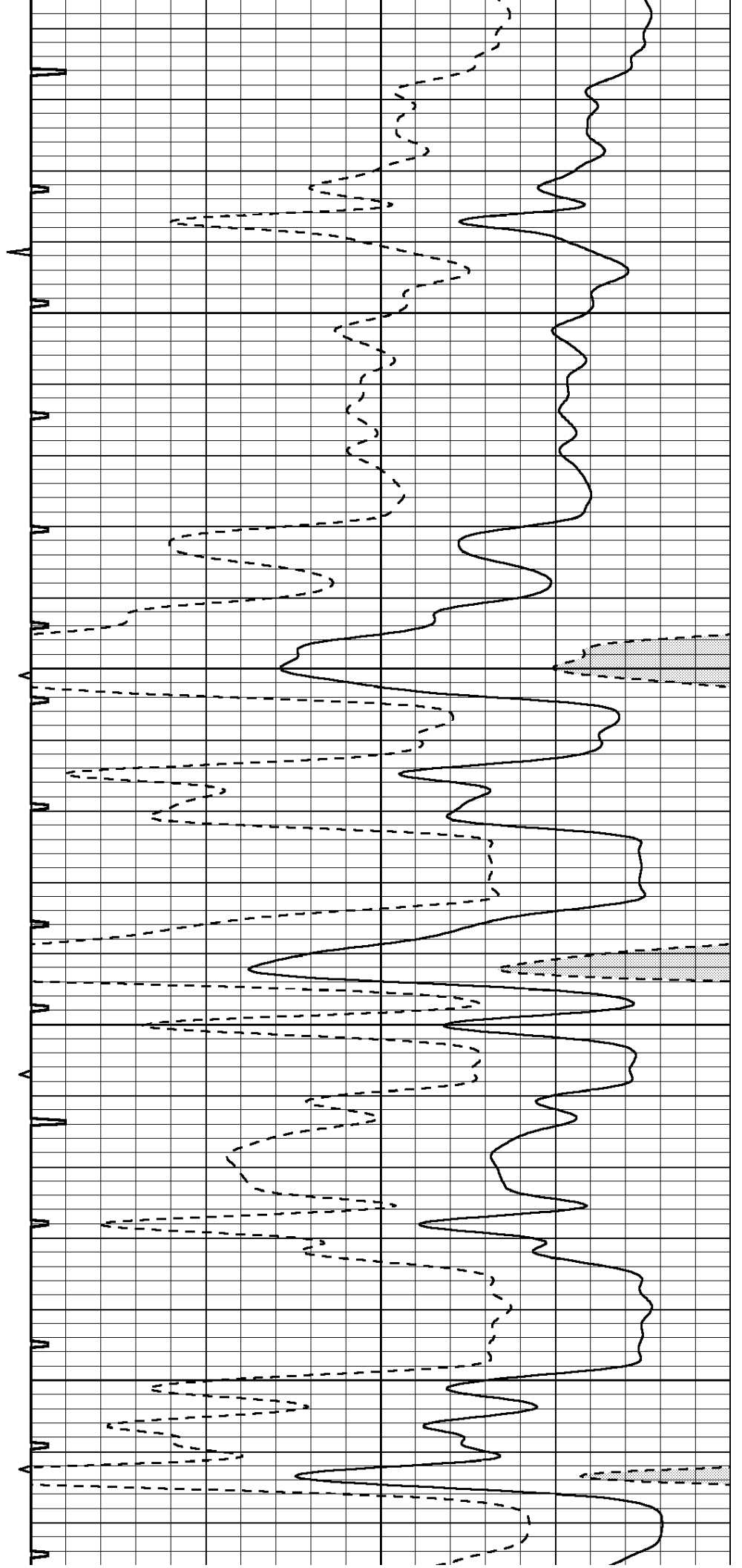


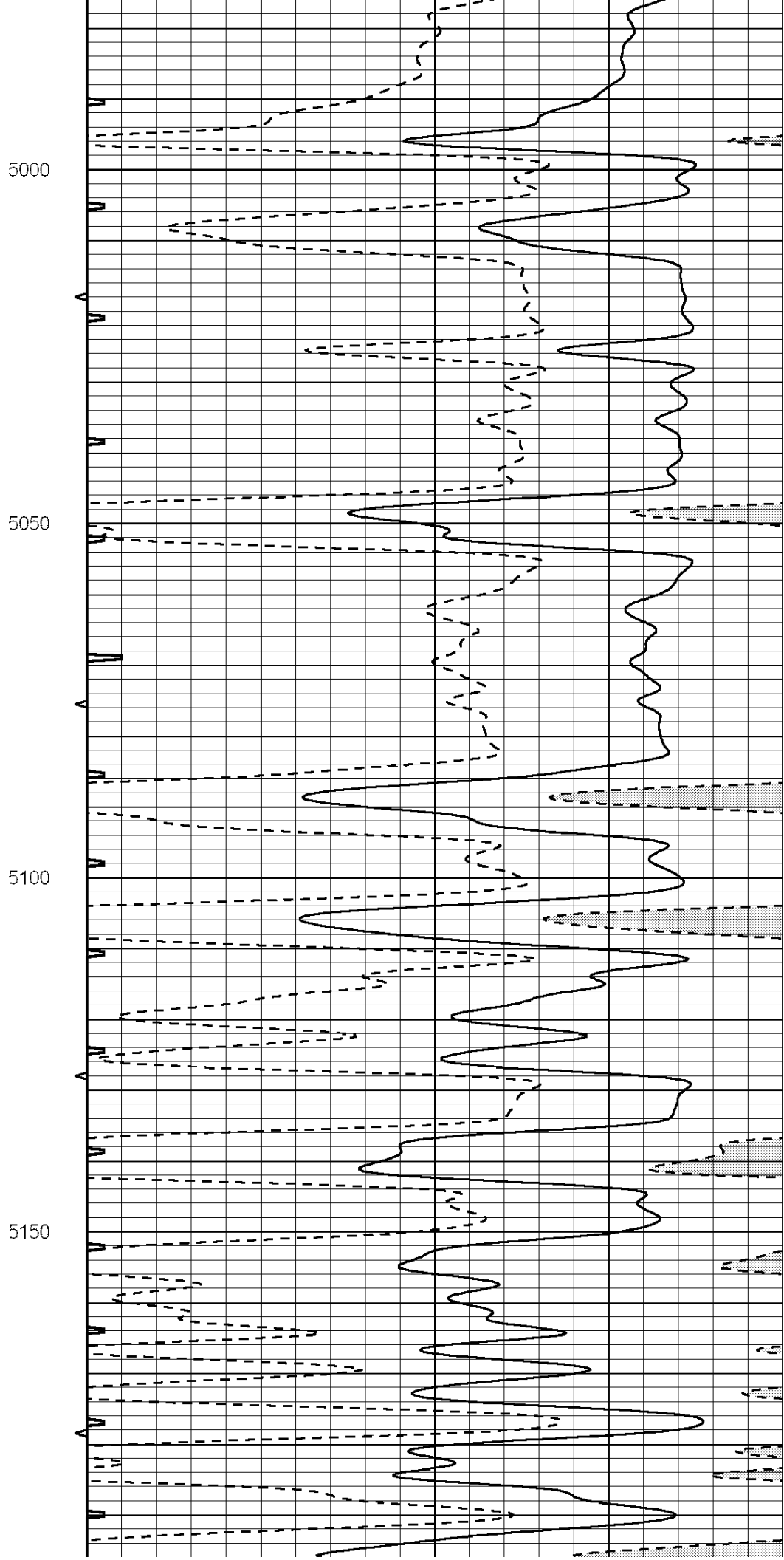
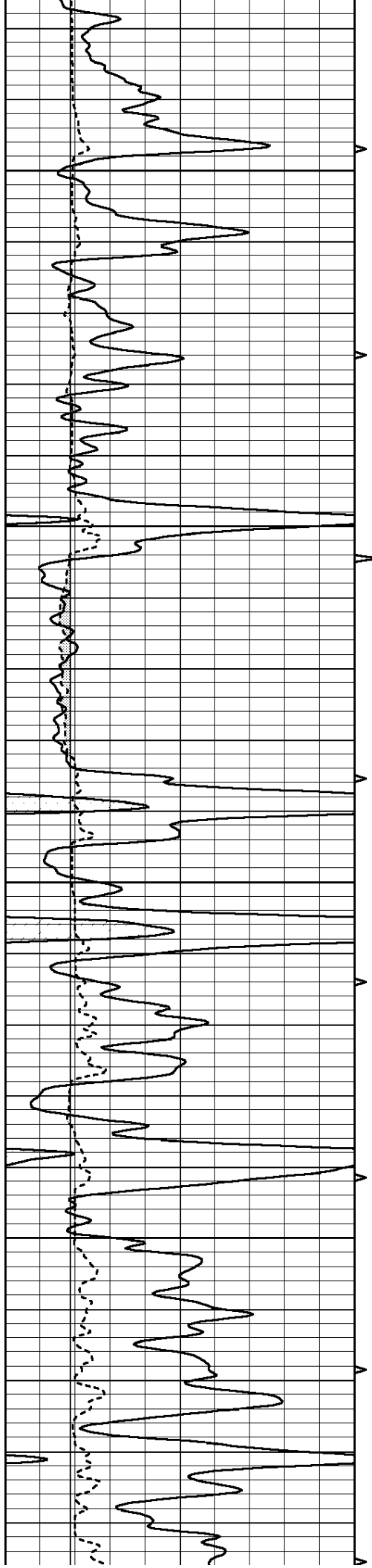
4800

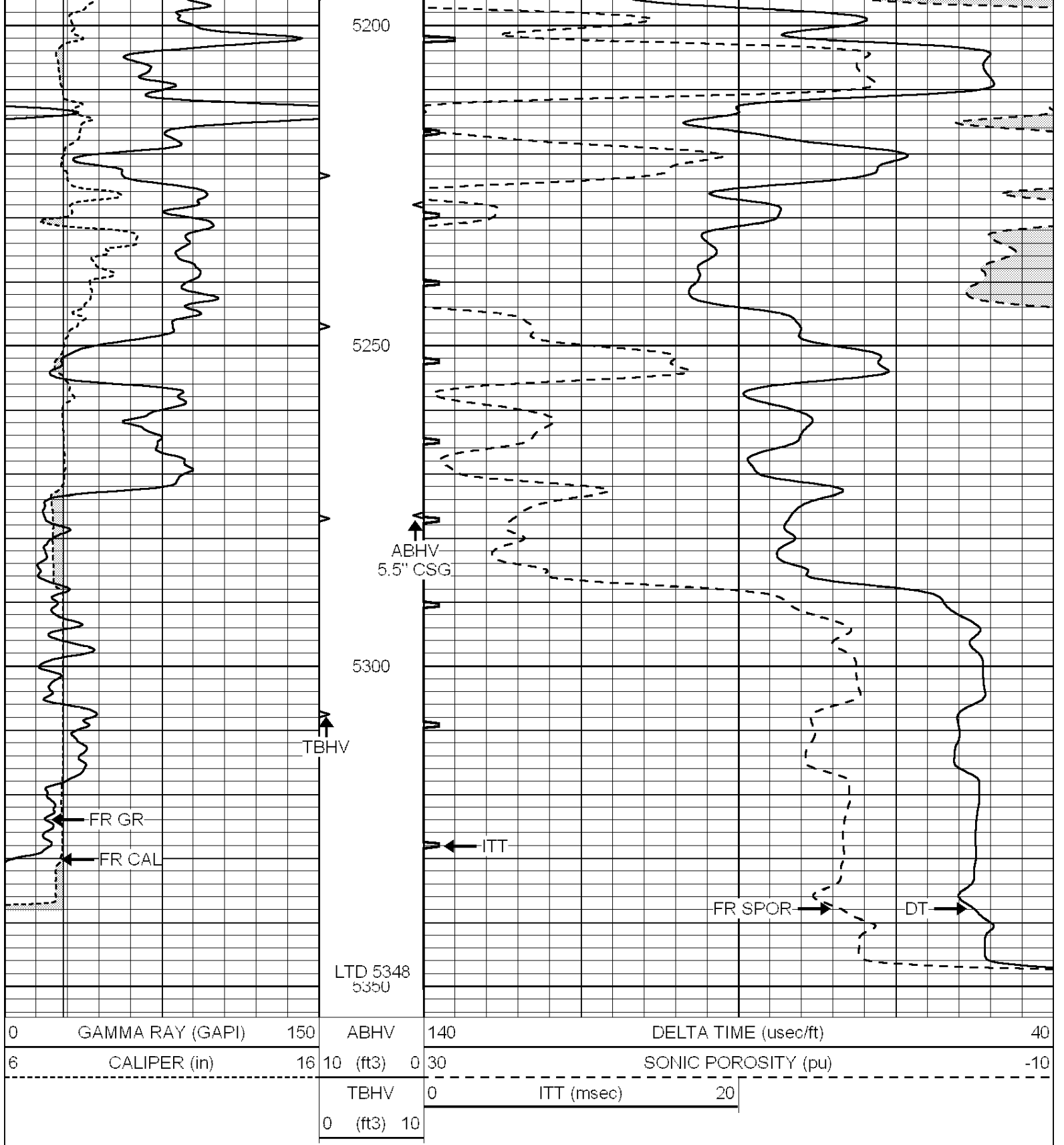
4850

4900

4950





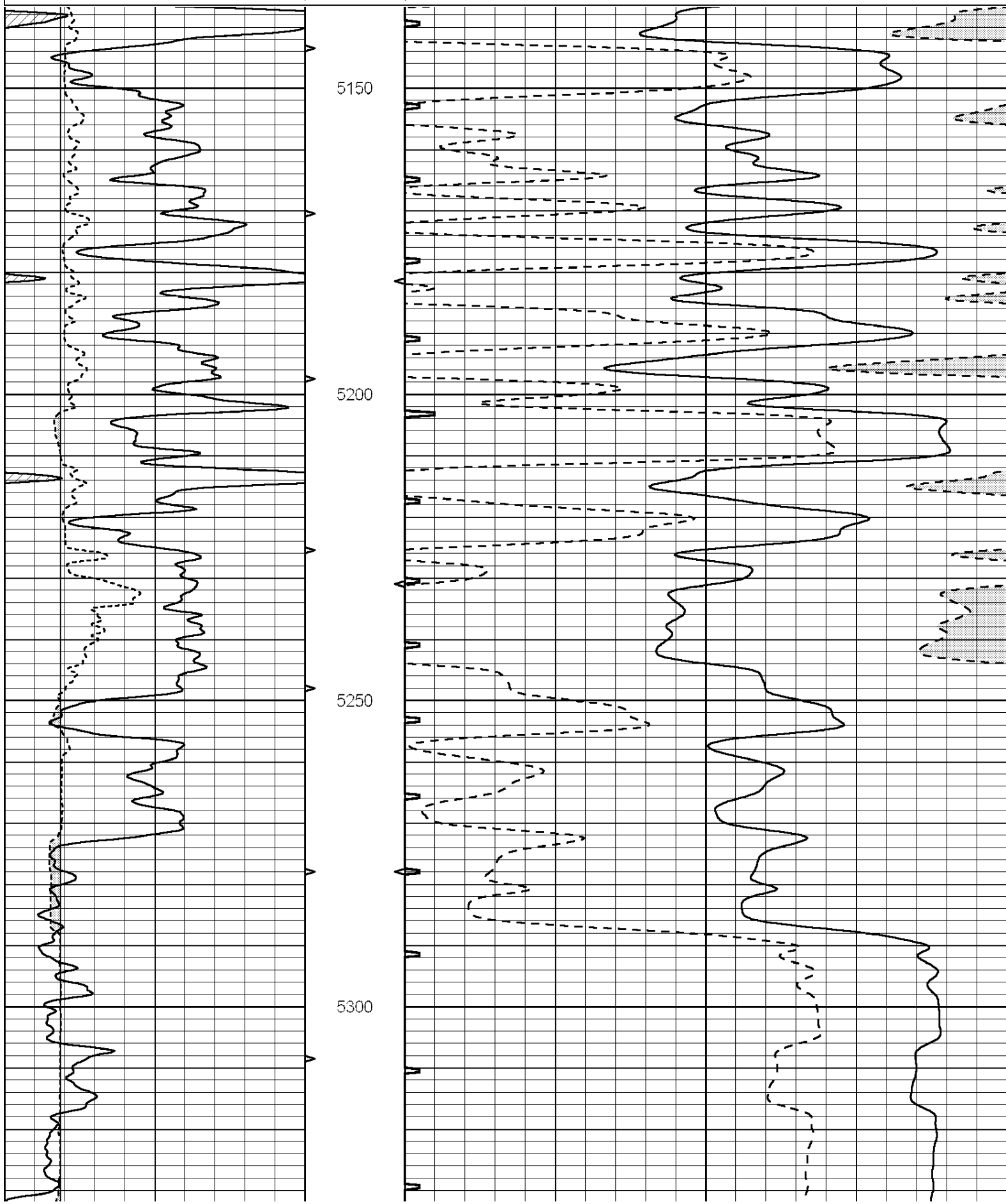


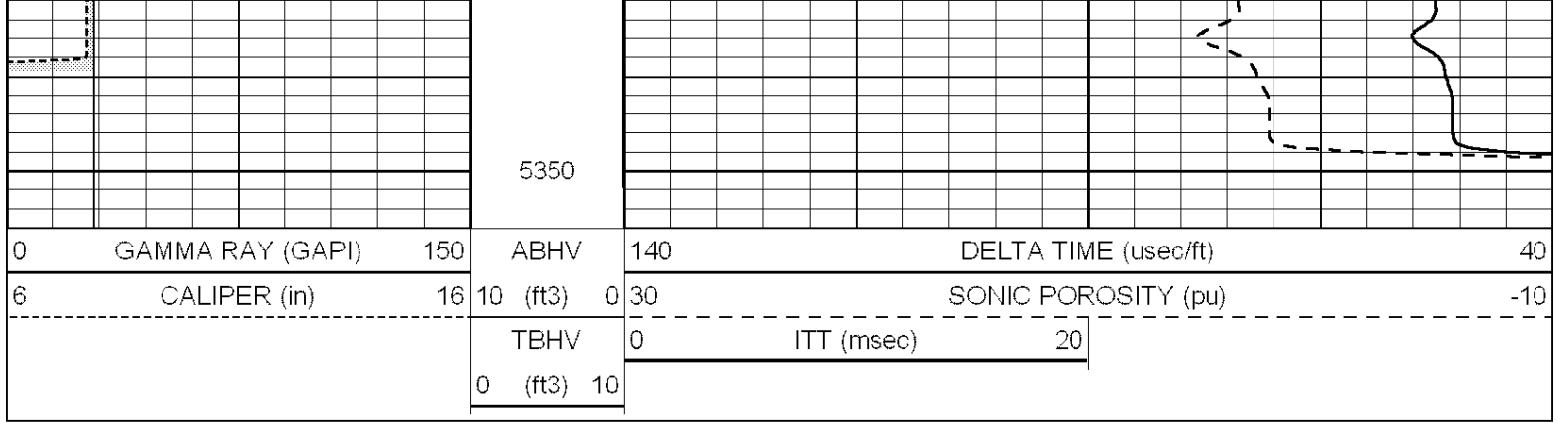
SUPERIOR
Hays,
Kansas

REPEAT SECTION

Database File: 006680pe.db
 Dataset Pathname: pass5.1
 Presentation Format: _slt
 Dataset Creation: Fri Jan 28 07:24:59 2011 by Calc Open-Cased 090629

0	GAMMA RAY (GAPI)	150	ABHV	140	DELTA TIME (usec/ft)	40
6	CALIPER (in)	16	10 (ft3) 0	30	SONIC POROSITY (pu)	-10
			TBHV	0	ITT (msec)	20
			0 (ft3) 10			





5350

0	GAMMA RAY (GAPI)	150	ABHV	140	DELTA TIME (usec/ft)	40
6	CALIPER (in)	16	10 (ft3) 0	30	SONIC POROSITY (pu)	-10
			TBHV	0	ITT (msec)	20
			0 (ft3) 10			