

Company Charles N. Griffin
Well Gates # 2
Field Wharton
County Harper
State Kansas

Company Charles N. Griffin
Well Gates # 2
Field Wharton
County Harper State Kansas

Location: API #: 15 077 21741

990' FSL & 1650' FWL

SEC 2 TWP 34S RGE 8W

Other Services
CDNL

Permanent Datum Ground Level Elevation 1387'
Log Measured From KB 10' AGL
Drilling Measured From KB

Elevation
K.B. 1397'
D.F. -----
G.L. 1387'

Date 5-8-11

Depth Driller 4750'

SW Curve Definitions

Rwa Water Saturation

VSH Apparent Water Resistivity

PHIE Effective Porosity

K Permeability

BVW Bulk Volume Water

Pay If: PHIE > 6%, VSH < 20%, SW < 50%, DCAL < 10"

Recorded By L. Smith

Witnessed By Mr. Bruce Reed

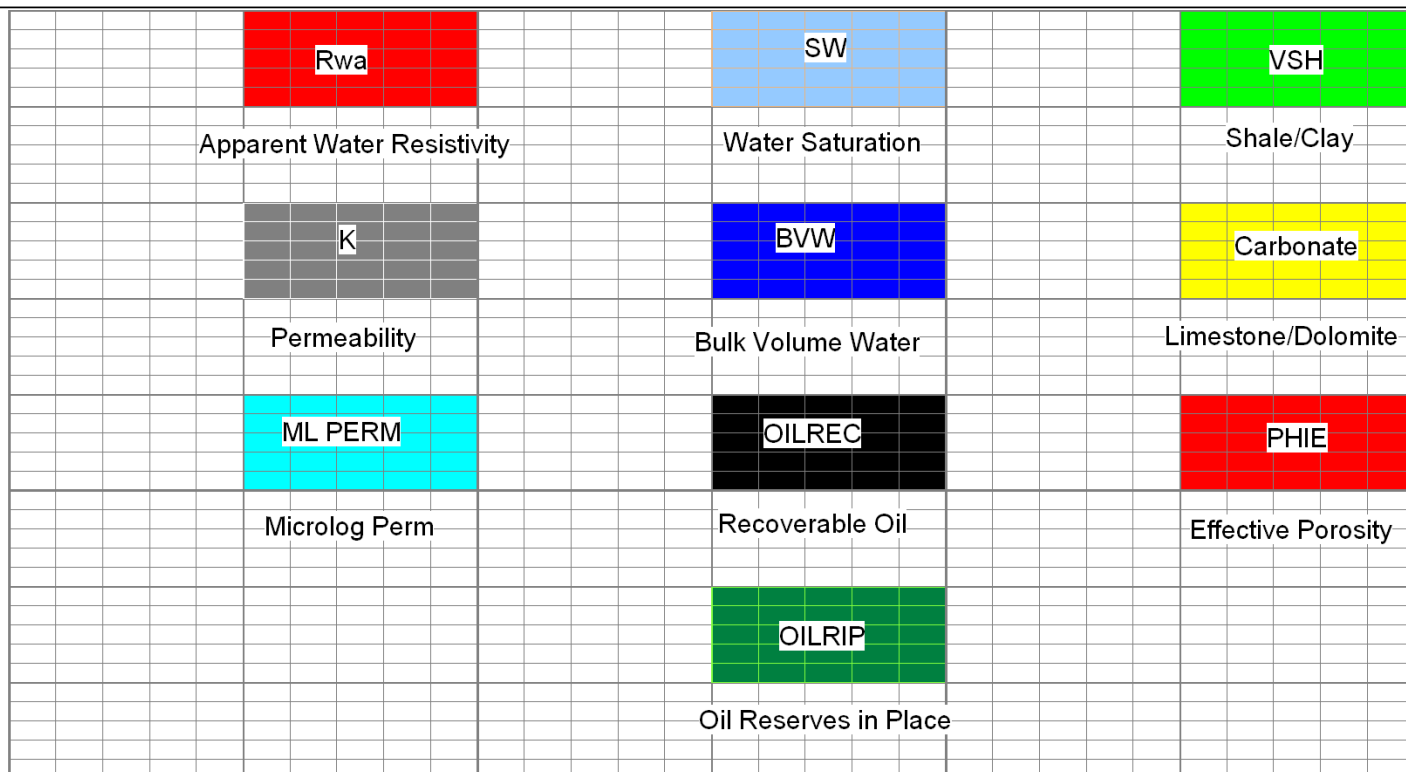
<<< Fold Here >>>

All interpretations are opinions based on inferences from electrical or other measurements and we cannot and do not guarantee the accuracy or correctness of any interpretation, and we shall not, except in the case of gross or willful negligence on our part, be liable or responsible for any loss, costs, damages, or expenses incurred or sustained by anyone resulting from any interpretation made by any of our officers, agents or employees. These interpretations are also subject to our general terms and conditions set out in our current Price Schedule.

Comments

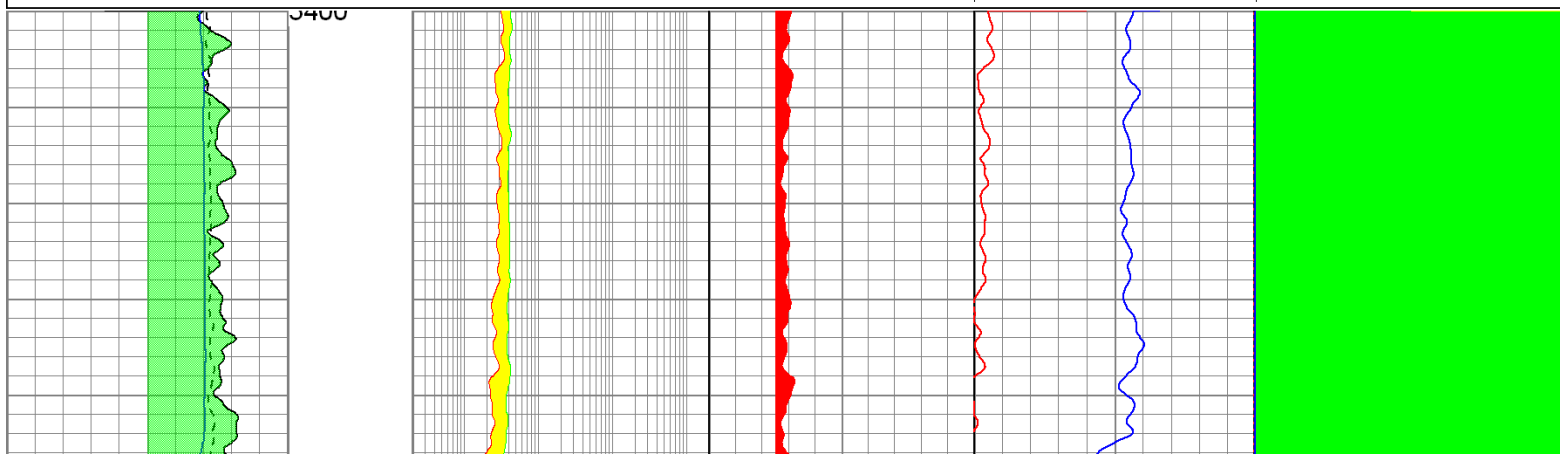
Thank you for using The Perforators LLC
785-621-4604

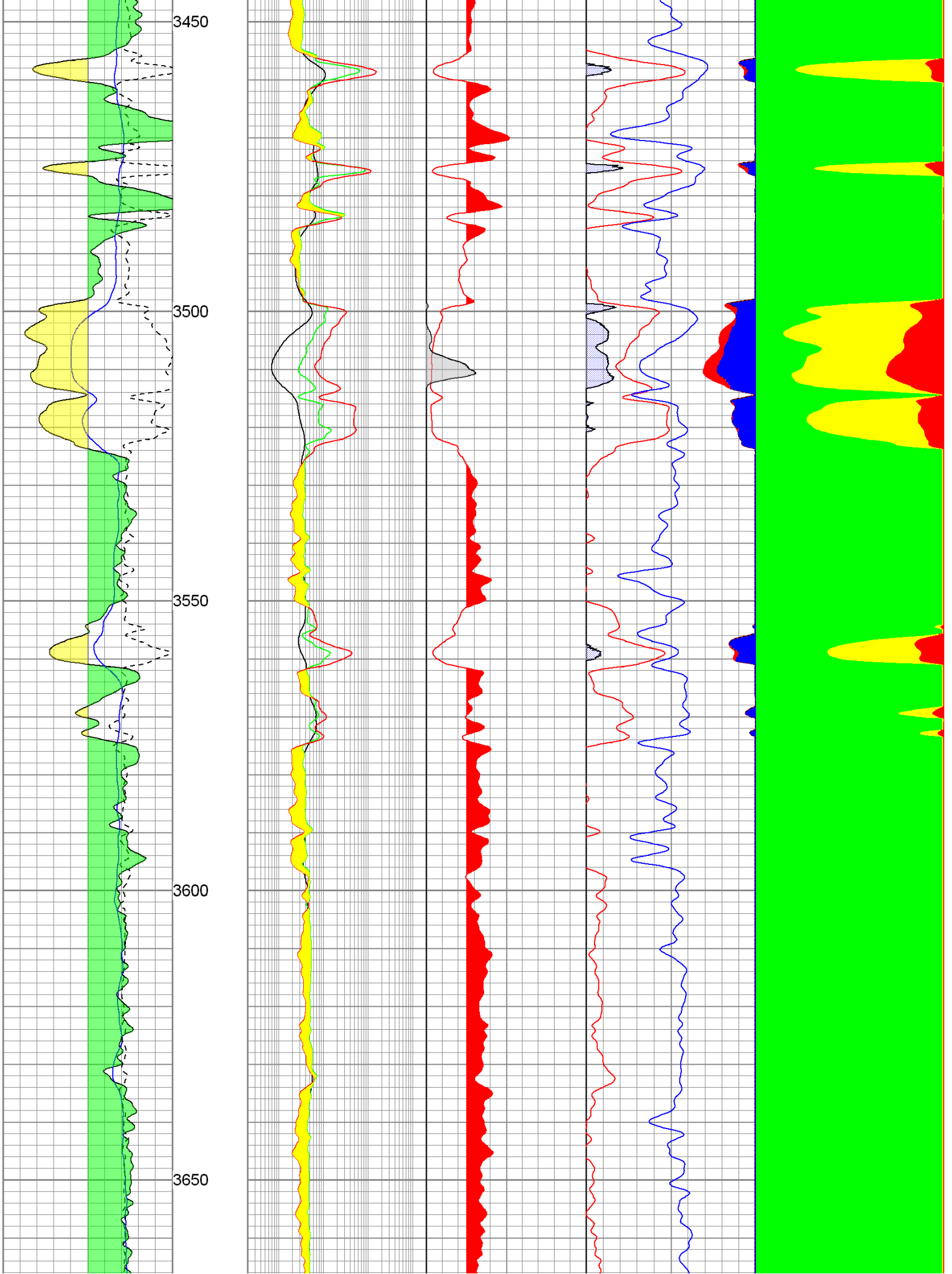
Database File: gcolorchart.db
 Dataset Pathname: pass3.1
 Presentation Format: color
 Dataset Creation: Wed Nov 17 10:09:46 2010
 Charted by: Depth in Feet scaled 1:240

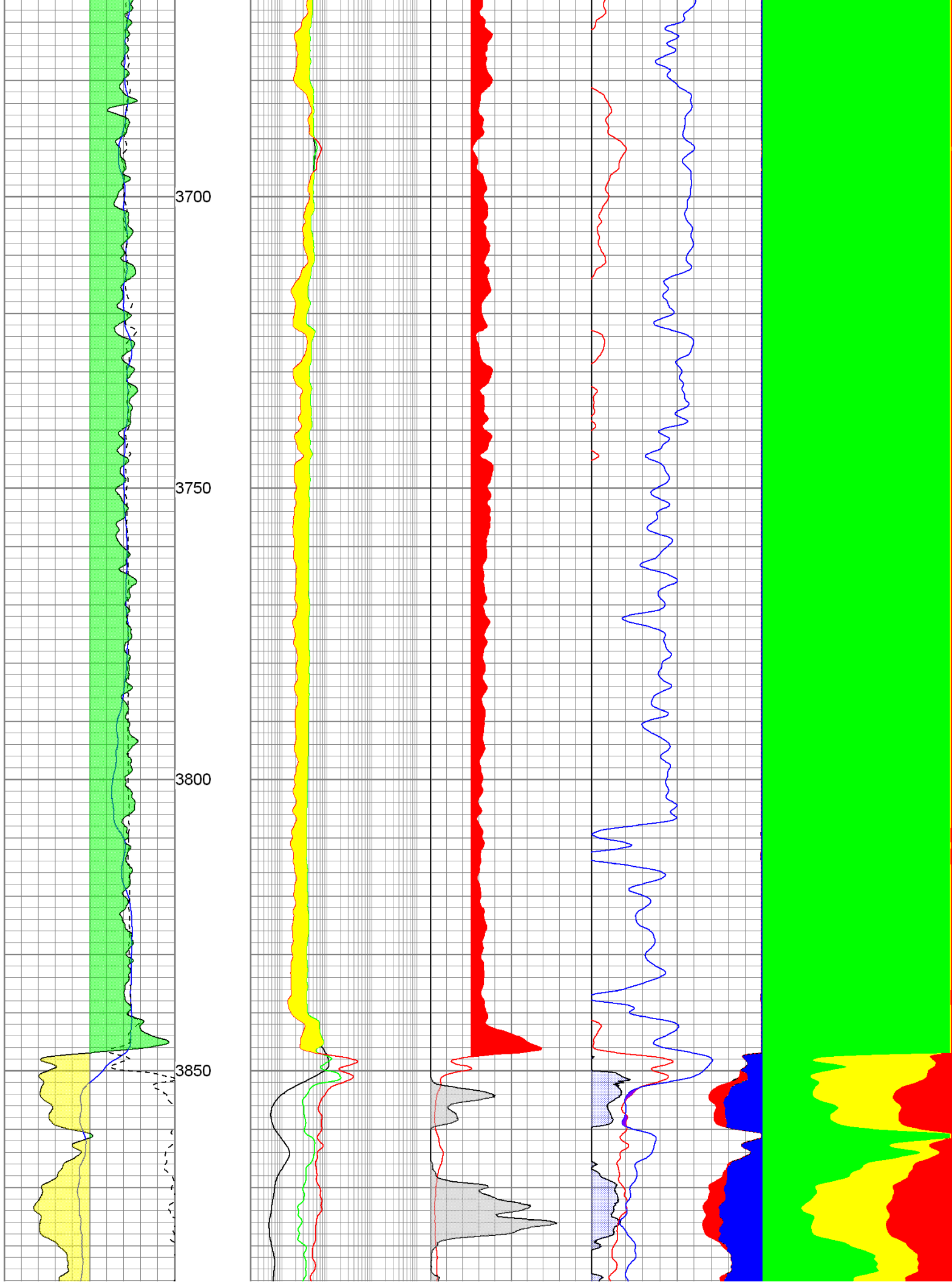


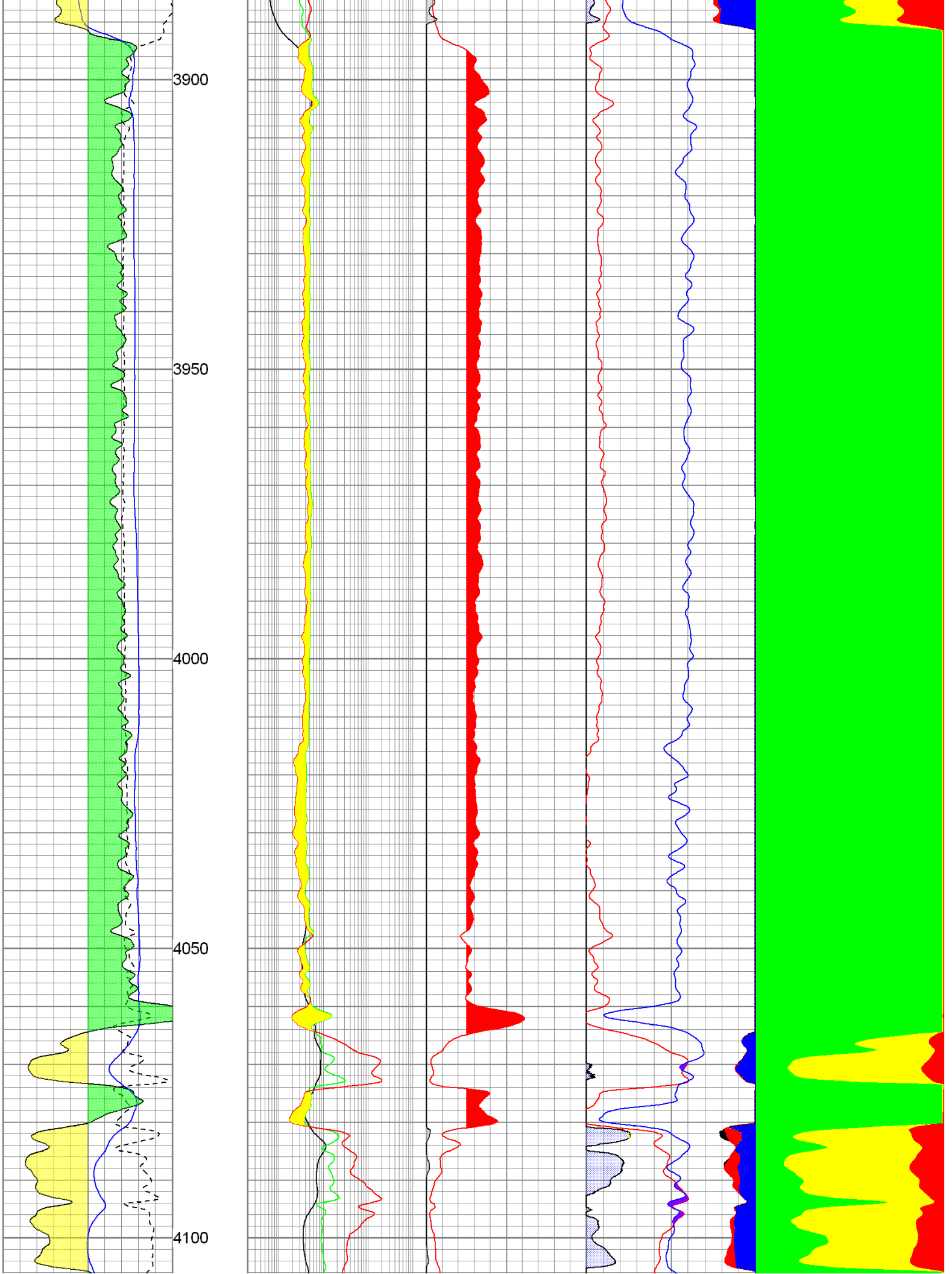
Database File: cggates#2.db
 Dataset Pathname: oh2
 Presentation Format: kohcgi
 Dataset Creation: Mon May 09 12:41:21 2011
 Charted by: Depth in Feet scaled 1:240

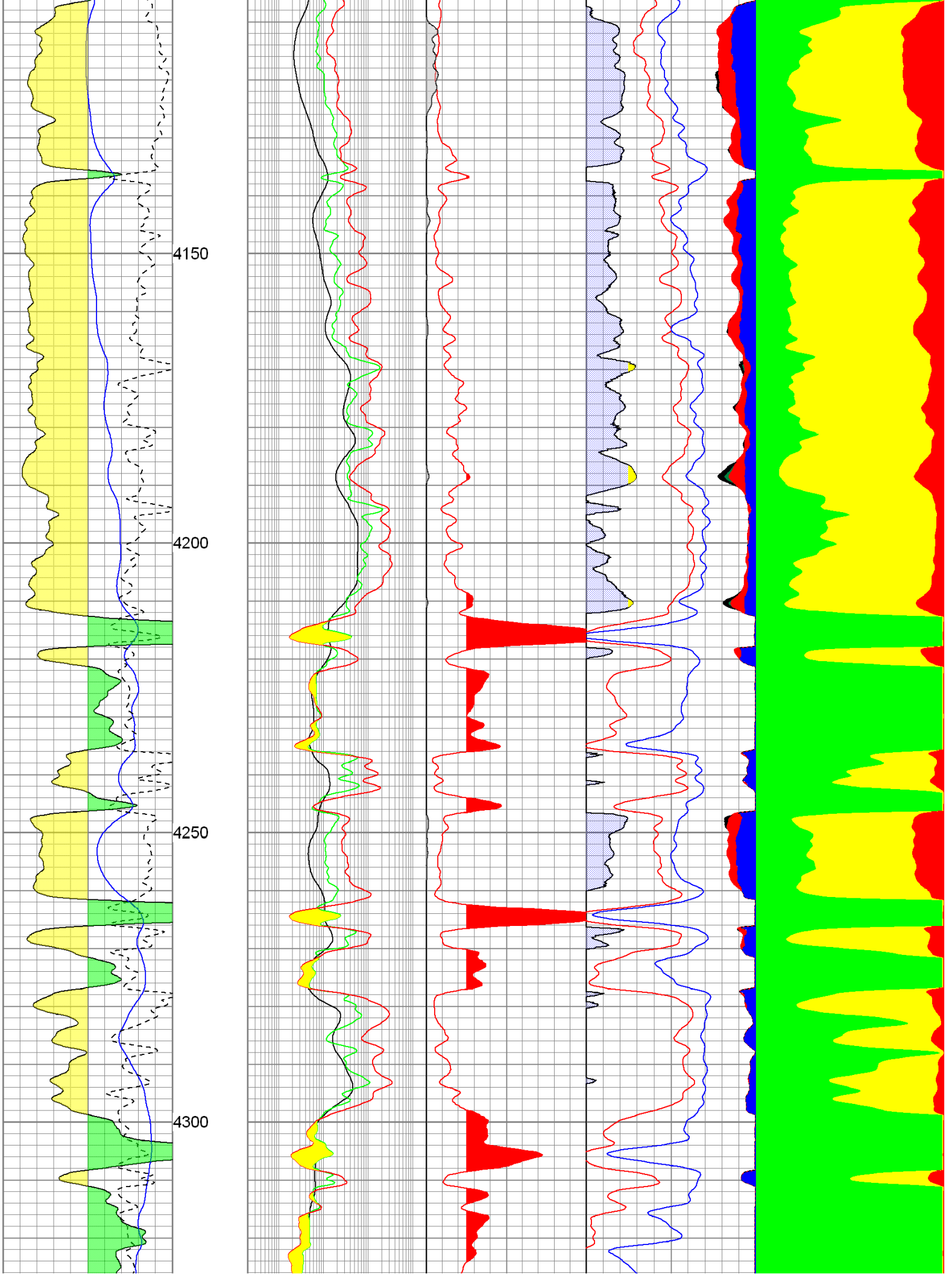
| | | | | |
|------------------|------------------|-----------------|--------------------|---------------|
| 0 GR (GAPI) 150 | RILD | 0 Rwa (Ohm-m) 1 | 100 SW (%) -100 | 0 VSH (%) 100 |
| -100 SP (mV) 100 | 0.2 (Ohm-m) 2000 | 0 K 5 | 50 PHIE (%) 0 | 50 PHIE (%) 0 |
| 140 Rxo\Rt -60 | RLL3 | | 50 BVW (%) 0 | |
| | 0.2 (Ohm-m) 2000 | | 30 NPOR (pu) -10 | |
| | 0 NEU (NAPI) 700 | | 30 DPOR (pu) -10 | |
| | | | 200COILREC (bbl) 0 | |
| | | | 8000OILRIP (bbl) 0 | |

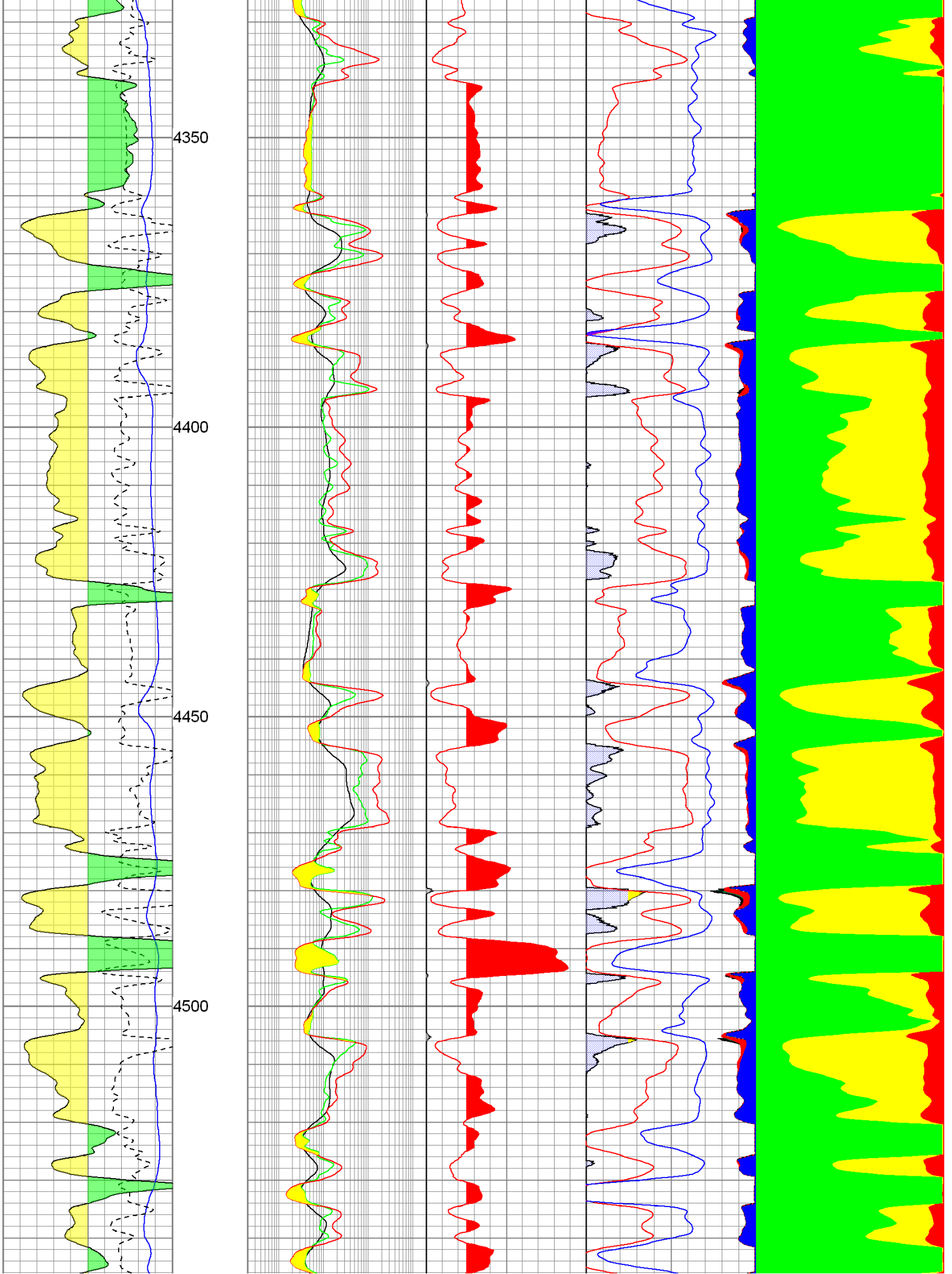


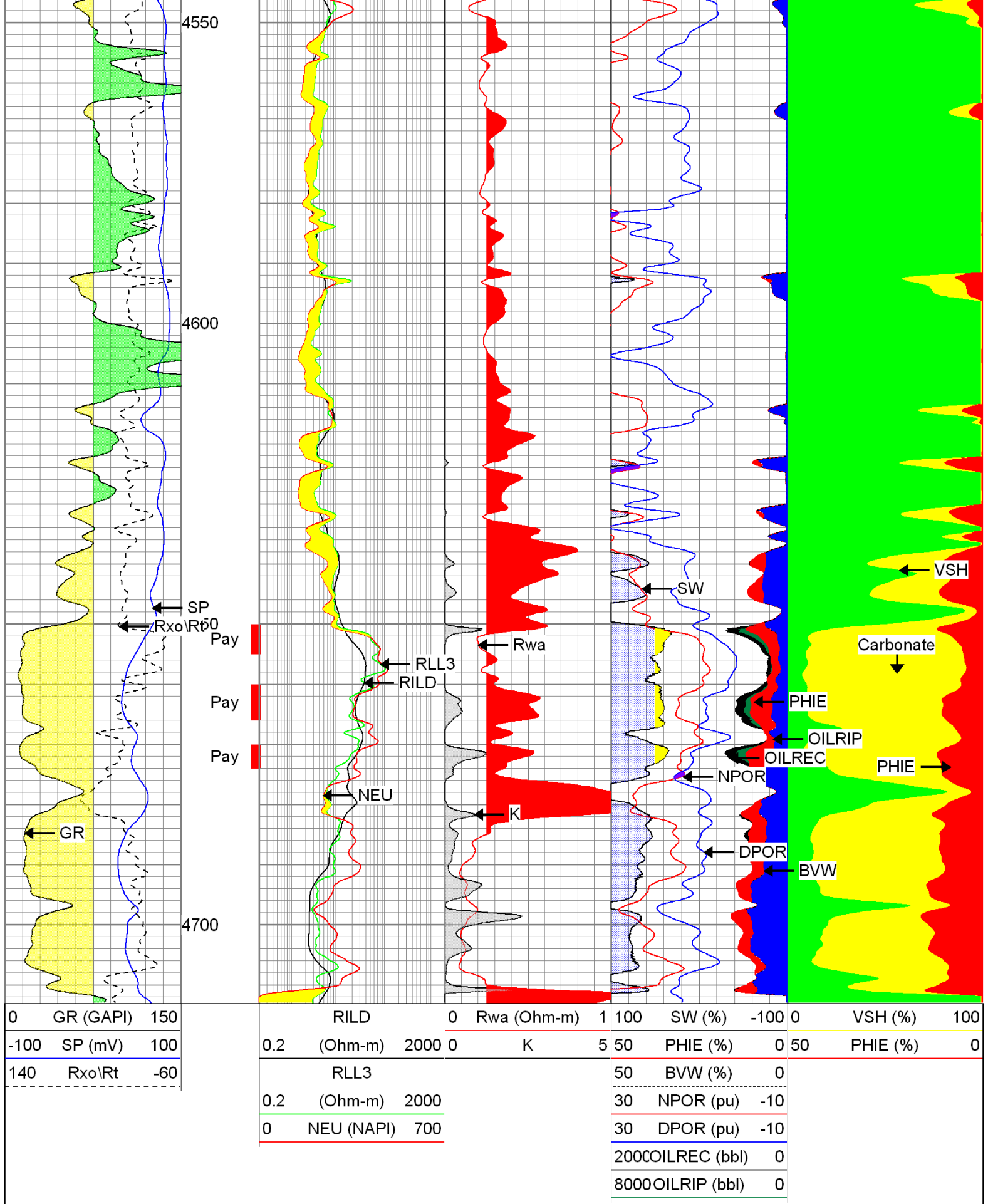












| | | |
|------|-----------|-----|
| 0 | GR (GAPI) | 150 |
| -100 | SP (mV) | 100 |
| 140 | Rxo/Rt | -60 |

| | | |
|-----|------------|------|
| 0.2 | RILD | 2000 |
| | (Ohm-m) | |
| 0.2 | RLL3 | 2000 |
| | (Ohm-m) | |
| 0 | NEU (NAPI) | 700 |

| | | |
|---|-------------|---|
| 0 | Rwa (Ohm-m) | 1 |
| 0 | K | 5 |

| | | |
|------|---------------|------|
| 100 | SW (%) | -100 |
| 50 | PHIE (%) | 0 |
| 50 | BVW (%) | 0 |
| 30 | NPOR (pu) | -10 |
| 30 | DPOR (pu) | -10 |
| 2000 | COILREC (bbl) | 0 |
| 8000 | OILRIP (bbl) | 0 |

| | | |
|----|----------|-----|
| 0 | VSH (%) | 100 |
| 50 | PHIE (%) | 0 |