



DIGITAL LOG (785) 625-3858

Dual Induction Log

API No.	15-101-22,287-00-00	
Company	Larson Engineering, Inc.	
Well	Cowdery No. 3-29	
Field	Cowdery	
County	Lane	State
Location	SW NW NE NE 588' FNL & 1,089' FEL	
Sec: 29	Twp: 18S	Rge: 30W
Other Services	CNL/CDL MEL	

Permanent Datum	Ground Level	Elevation
Log Measured From	Kelly Bushing	2889
Drilling Measured From	Kelly Bushing	7 Ft. Above Perm. Datum
		K.B. 2896
		D.F. 2889
		G.L. 2889

Date	4/8/2011
Run Number	One
Depth Driller	4620
Depth Logger	4614
Bottom Logged Interval	4613
Top Log Interval	250
Casing Driller	8.625 @ 256
Casing Logger	254
Bit Size	7.875
Type Fluid in Hole	Chemical
Salinity, ppm CL	3000
Density / Viscosity	9.1 67
pH / Fluid Loss	11.5 7.2
Source of Sample	Flowline
Rm @ Meas. Temp	.60 @ 66
Rmf @ Meas. Temp	.45 @ 66
Rmc @ Meas. Temp	.81 @ 66
Source of Rmf / Rmc	Charts
Rm @ BHT	.32 @ 122
Operating Rig Time	4 Hours
Max Rec. Temp. F	122
Equipment Number	10
Location	Hays
Recorded By	J. Long
Witnessed By	Vern Schrag

<<< Fold Here >>>

All interpretations are opinions based on inferences from electrical or other measurements and we cannot and do not guarantee the accuracy or correctness of any interpretation, and we shall not, except in the case of gross or willful negligence on our part, be liable or responsible for any loss, costs, damages, or expenses incurred or sustained by anyone resulting from any interpretation made by any of our officers, agents or employees. These interpretations are also subject to our general terms and conditions set out in our current Price Schedule.

Comments

Thank you for using Log-Tech, Inc.
(785) 625-3858

Dighton, 10 West to Bison Road, 1.2 Miles South, West Into (On Lease Road)

Database File: c:\warrior\data\larson_cowdery no. 3-29\larson_cowdery_3-29hd.db
 Dataset Pathname: dil\larsstck
 Presentation Format: dil2in
 Dataset Creation: Fri Apr 08 19:34:29 2011
 Charted by: Depth in Feet scaled 1:600

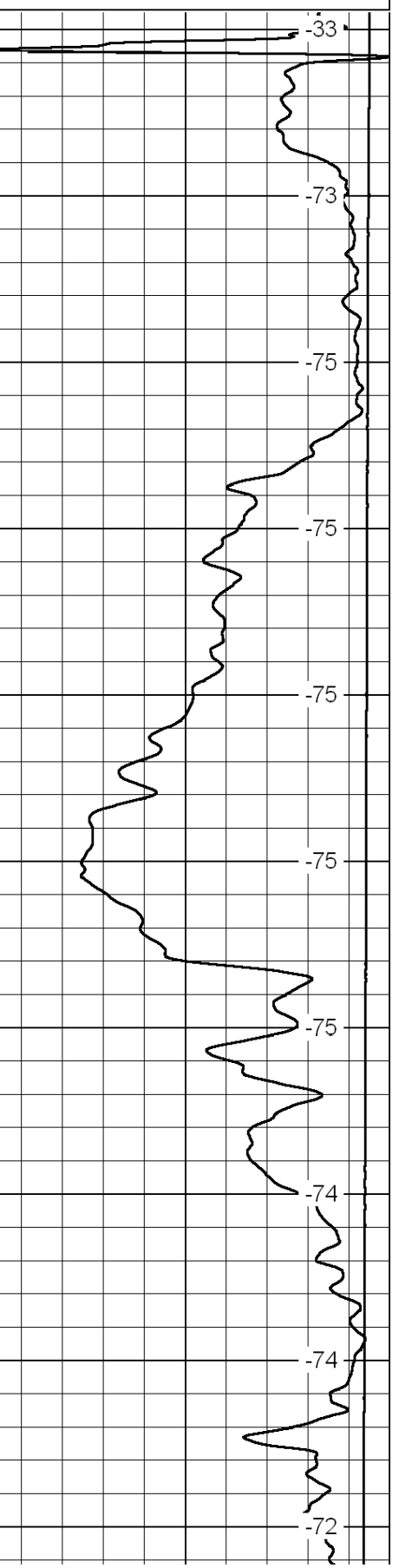
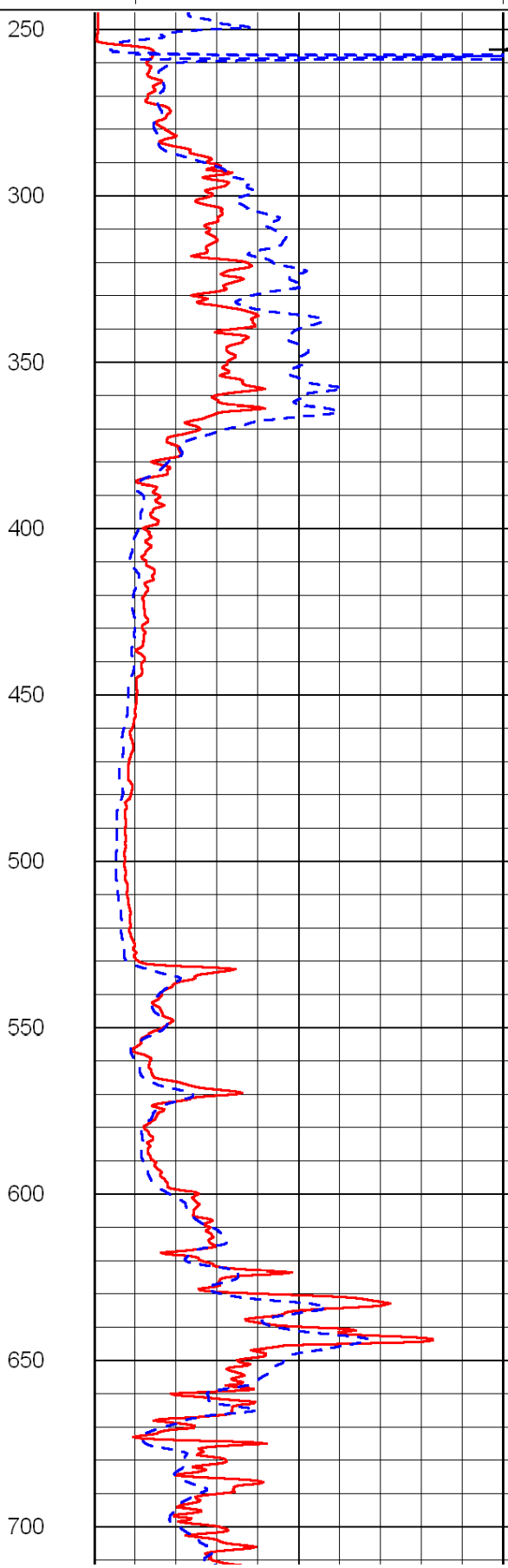
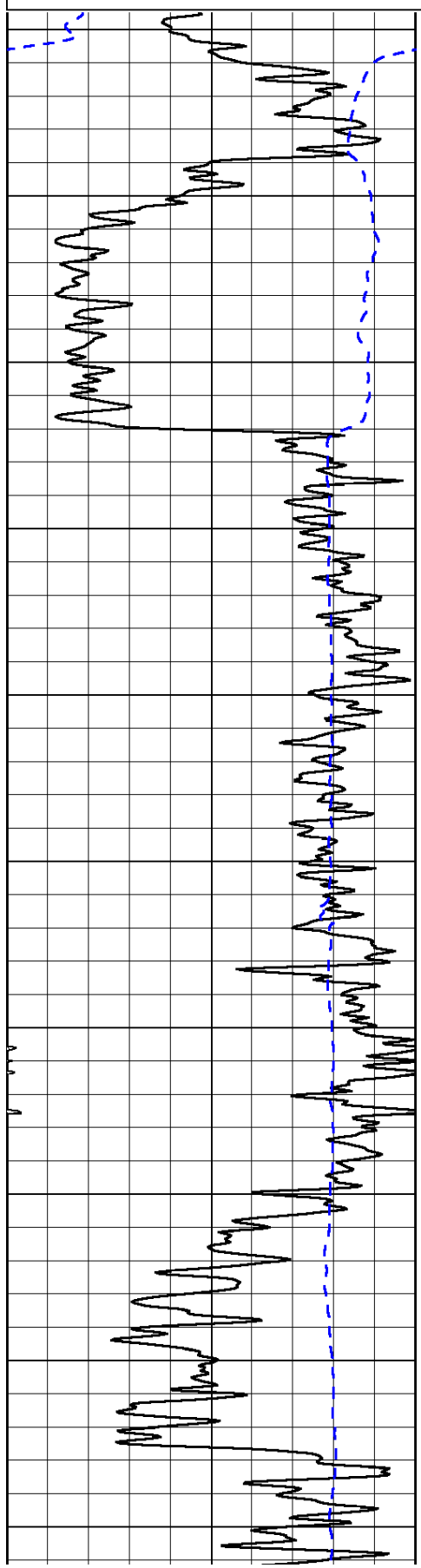
0	Gamma Ray	150
-200	SP (mV)	0

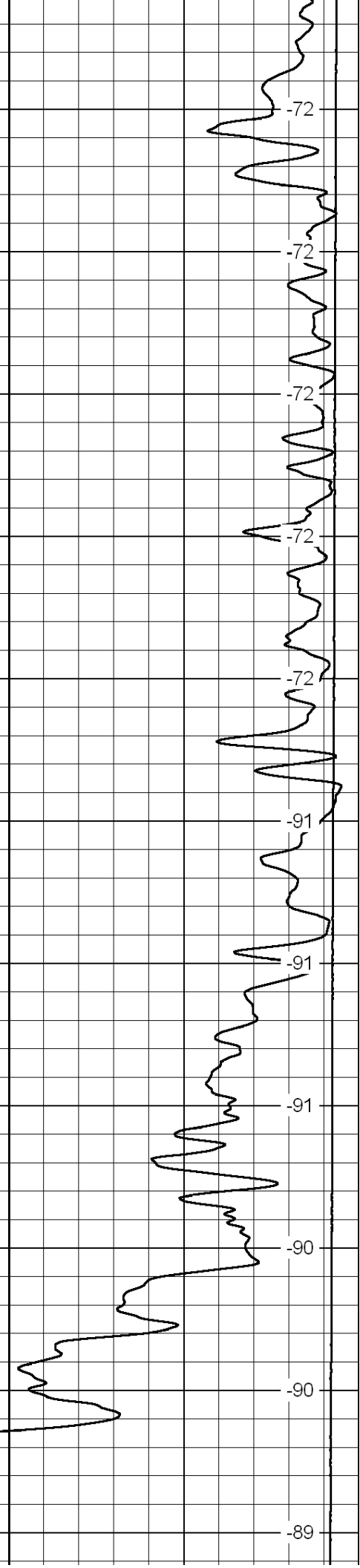
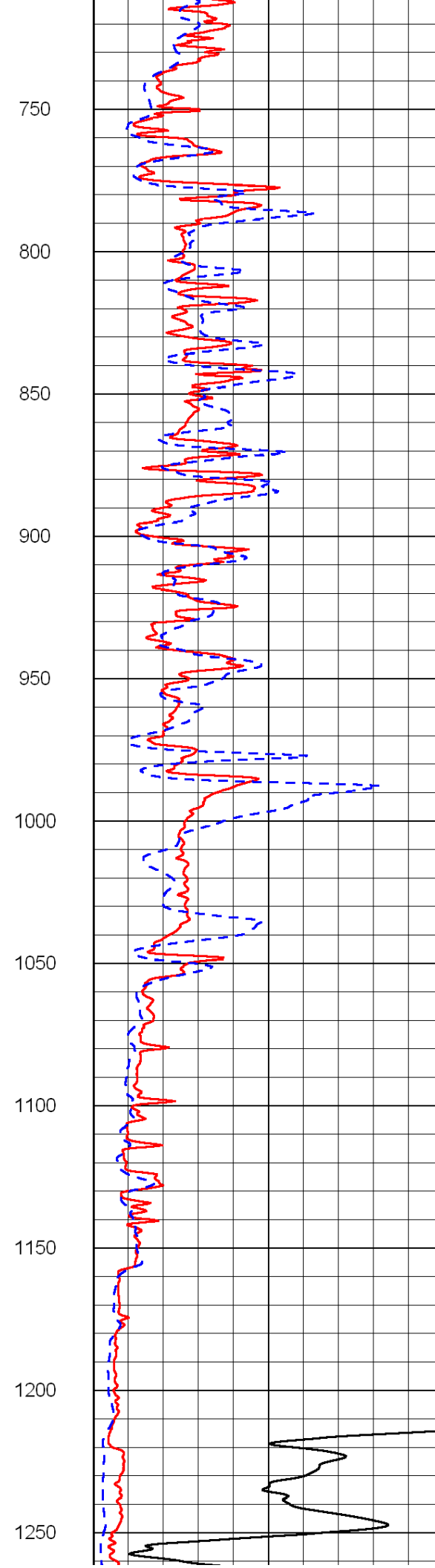
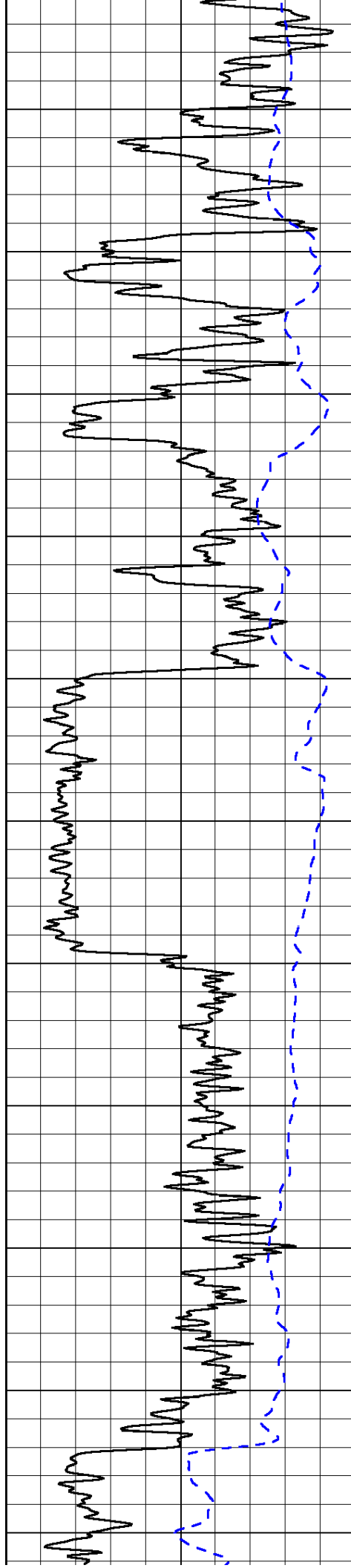
0	Shallow Resistivity	50
0	Deep Resistivity	50

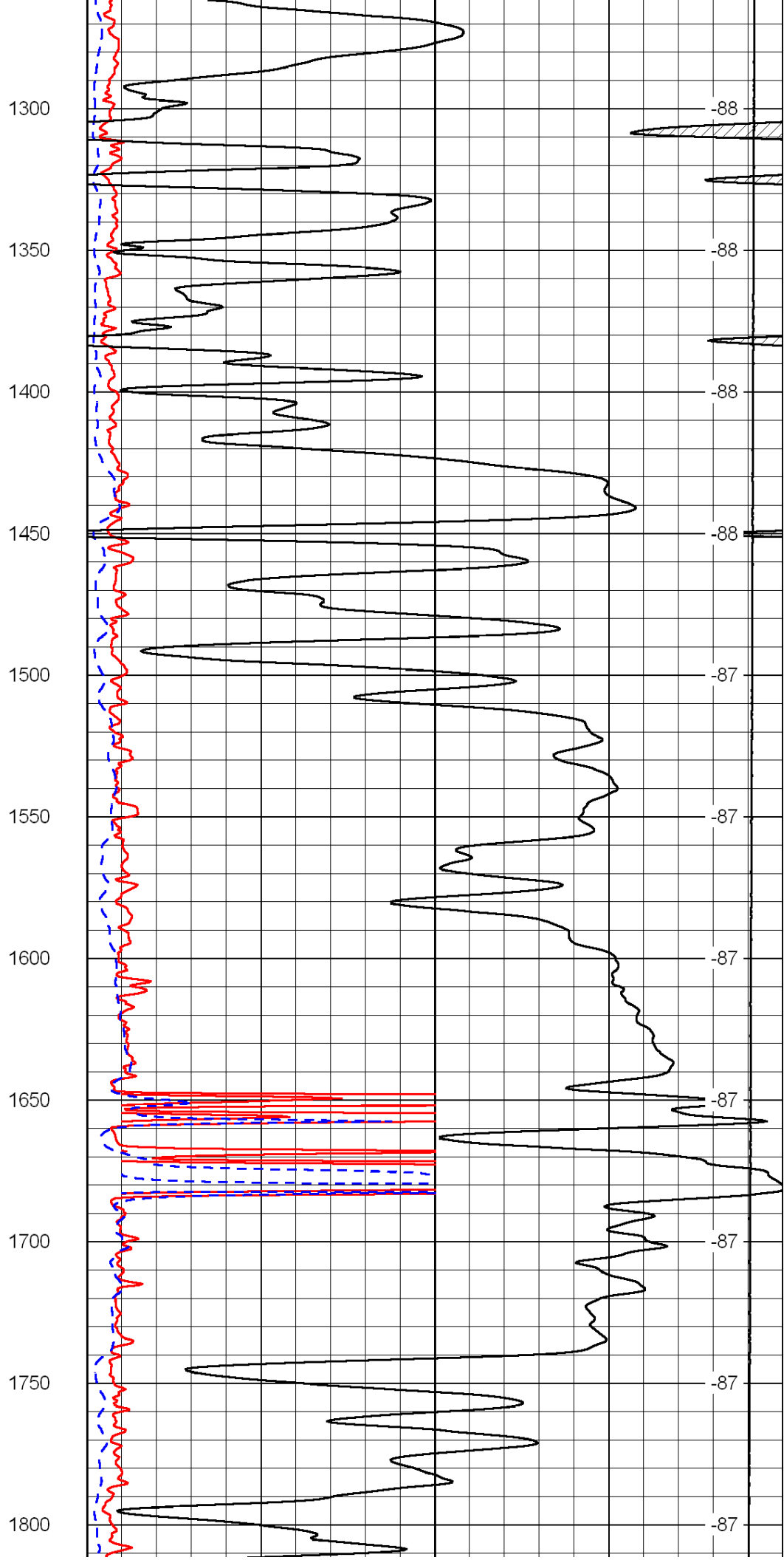
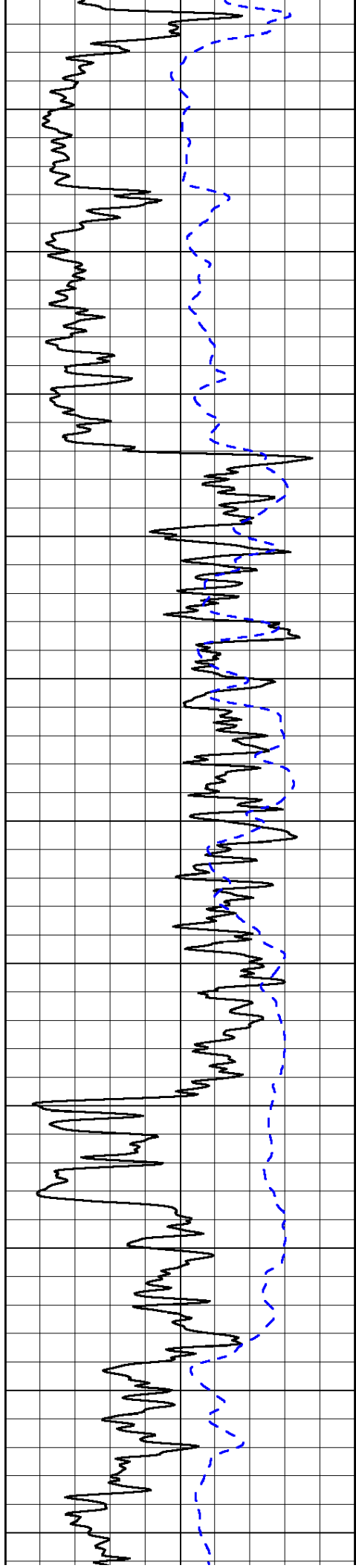
LSPD

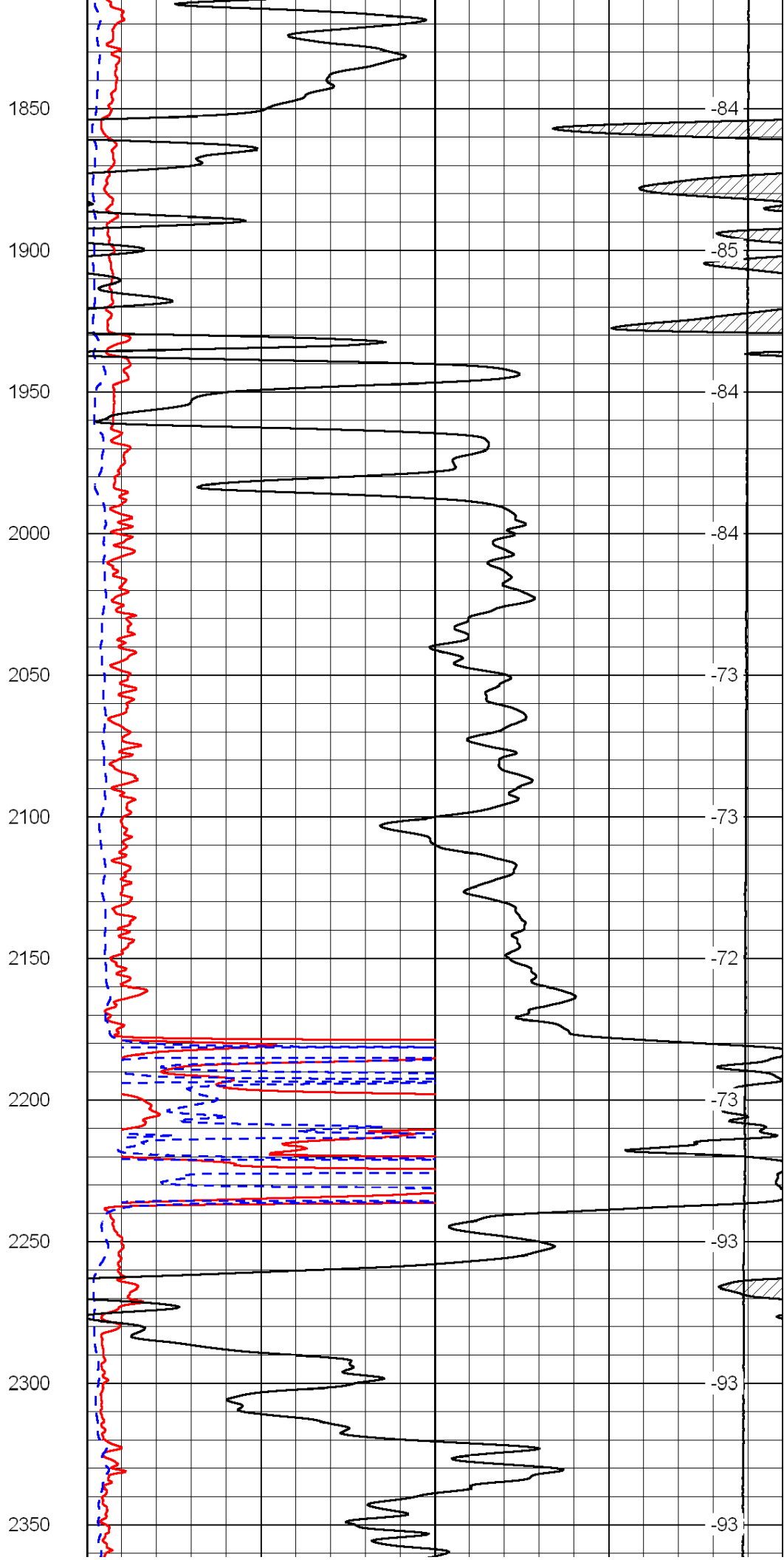
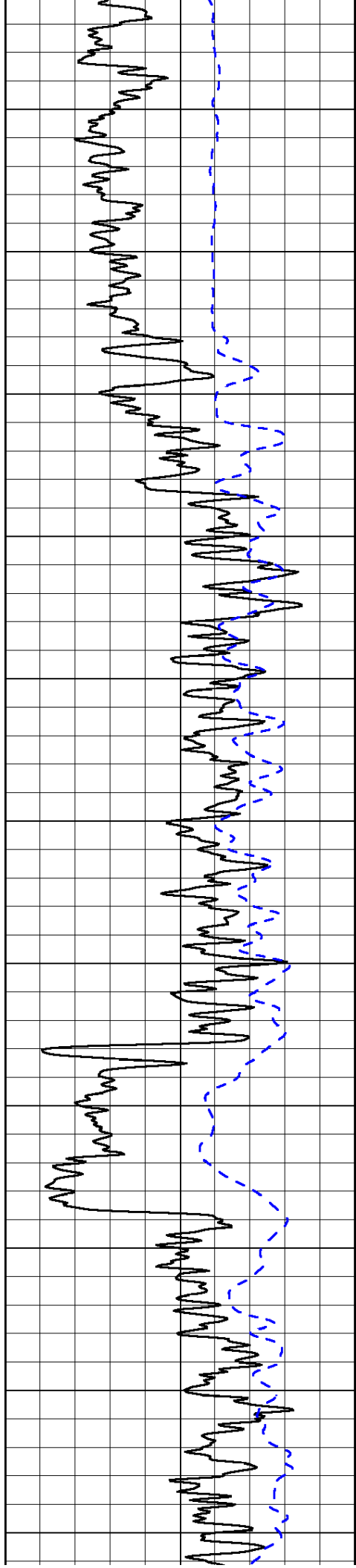
1000	Conductivity	0
15000	Line Tension	0

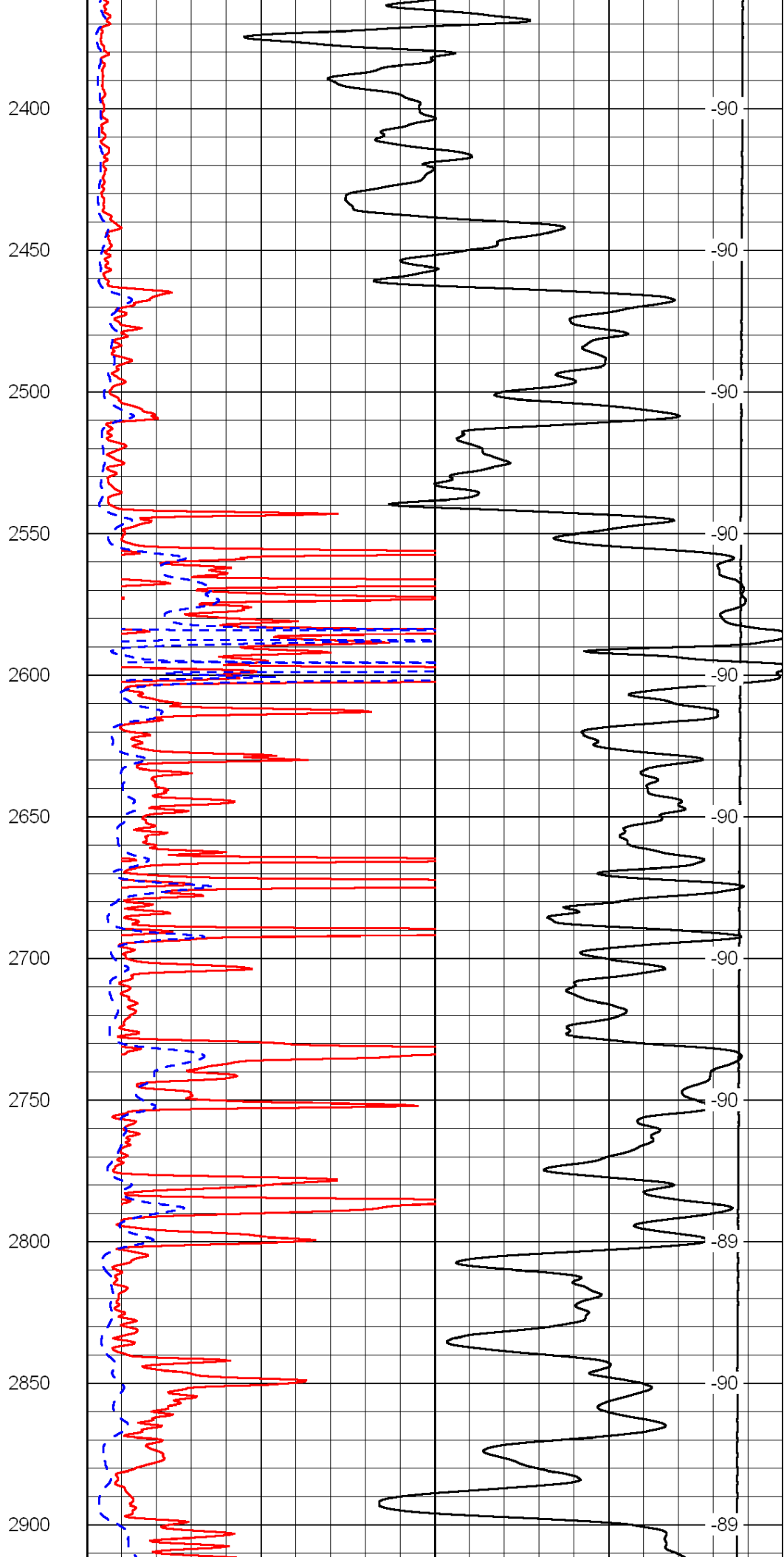
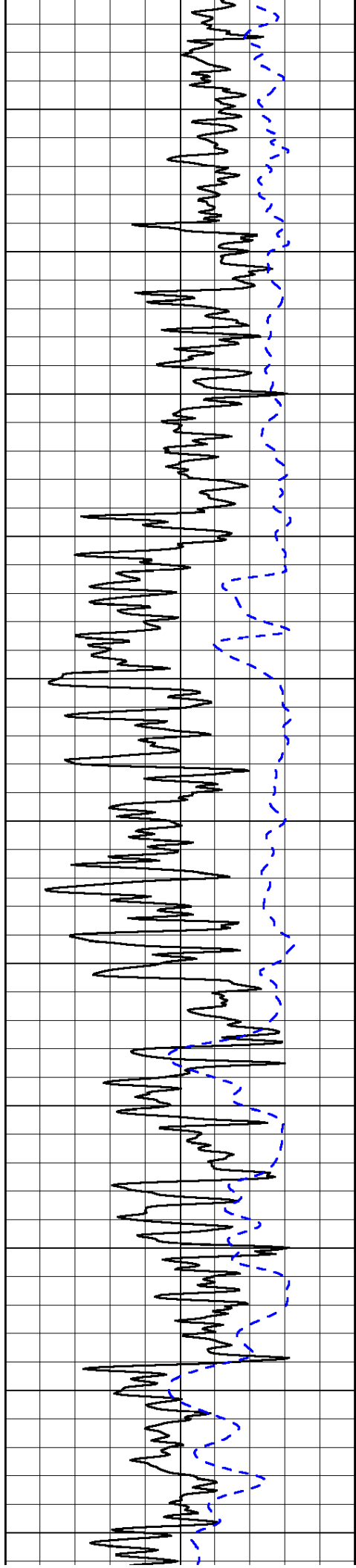
50	Shallow Resistivity	500
50	Deep Resistivity	500

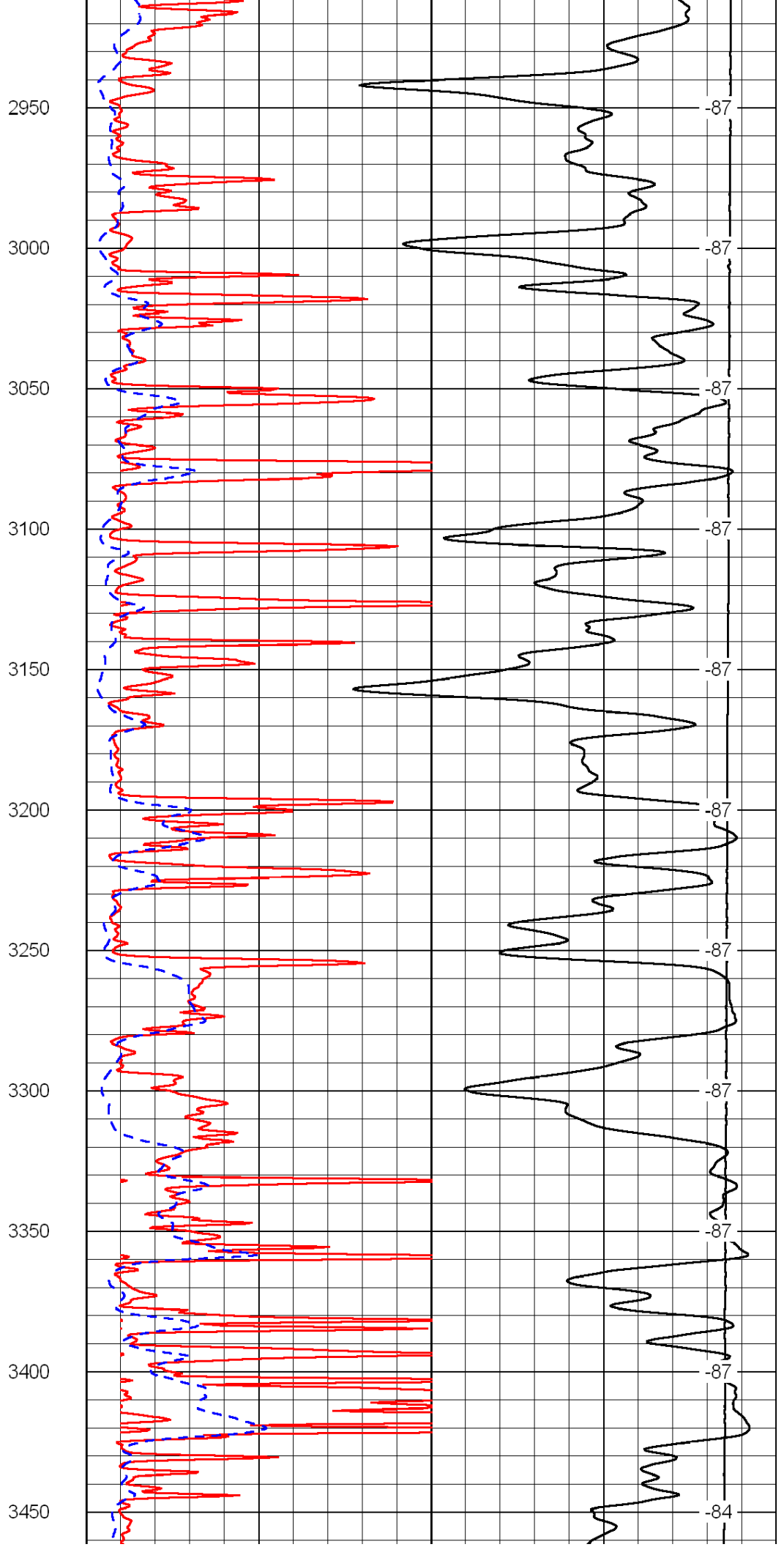
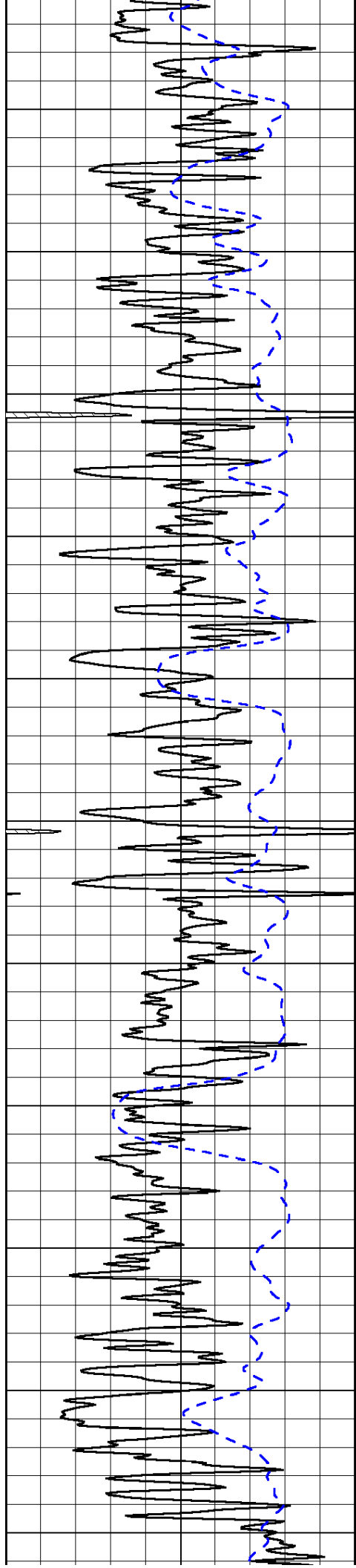


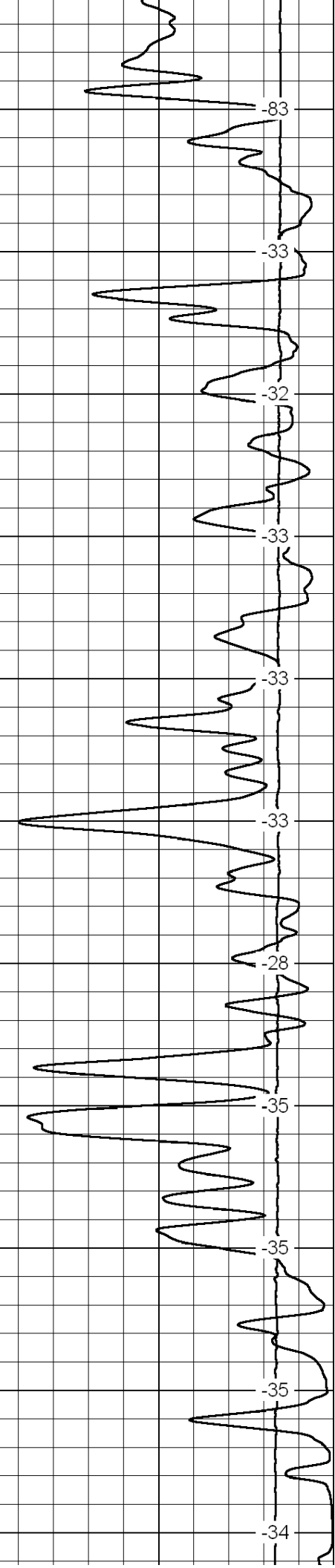
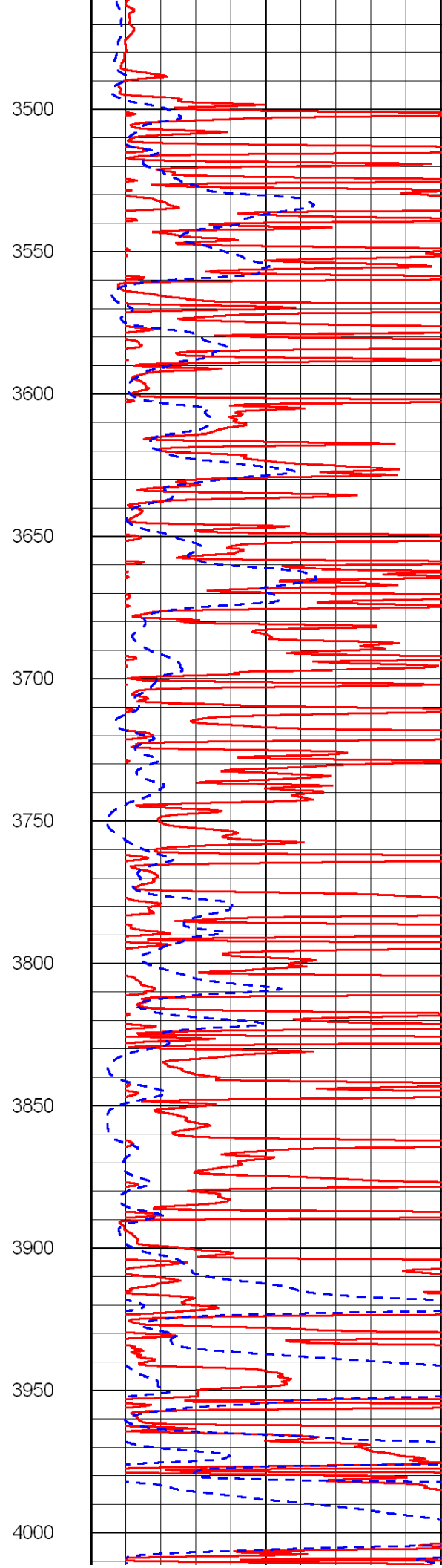
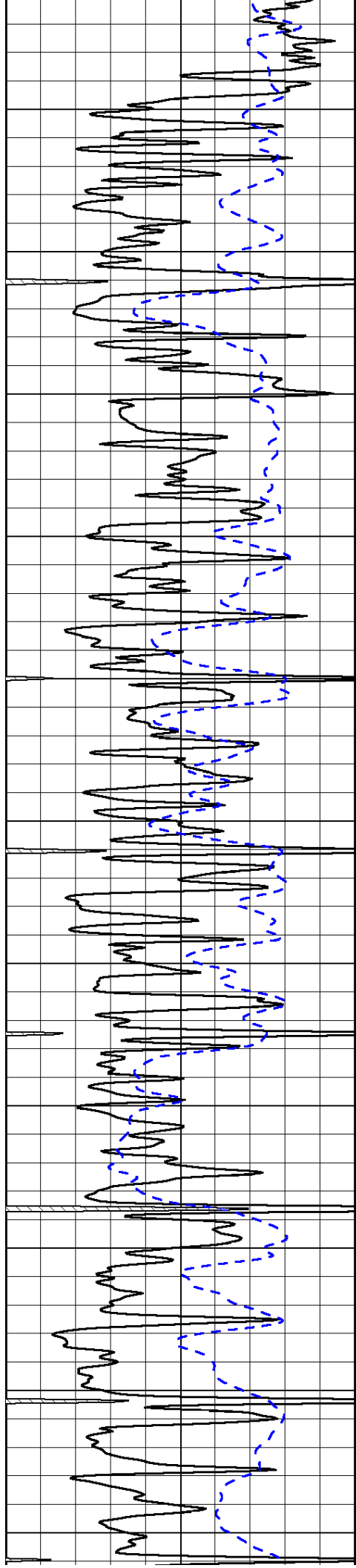


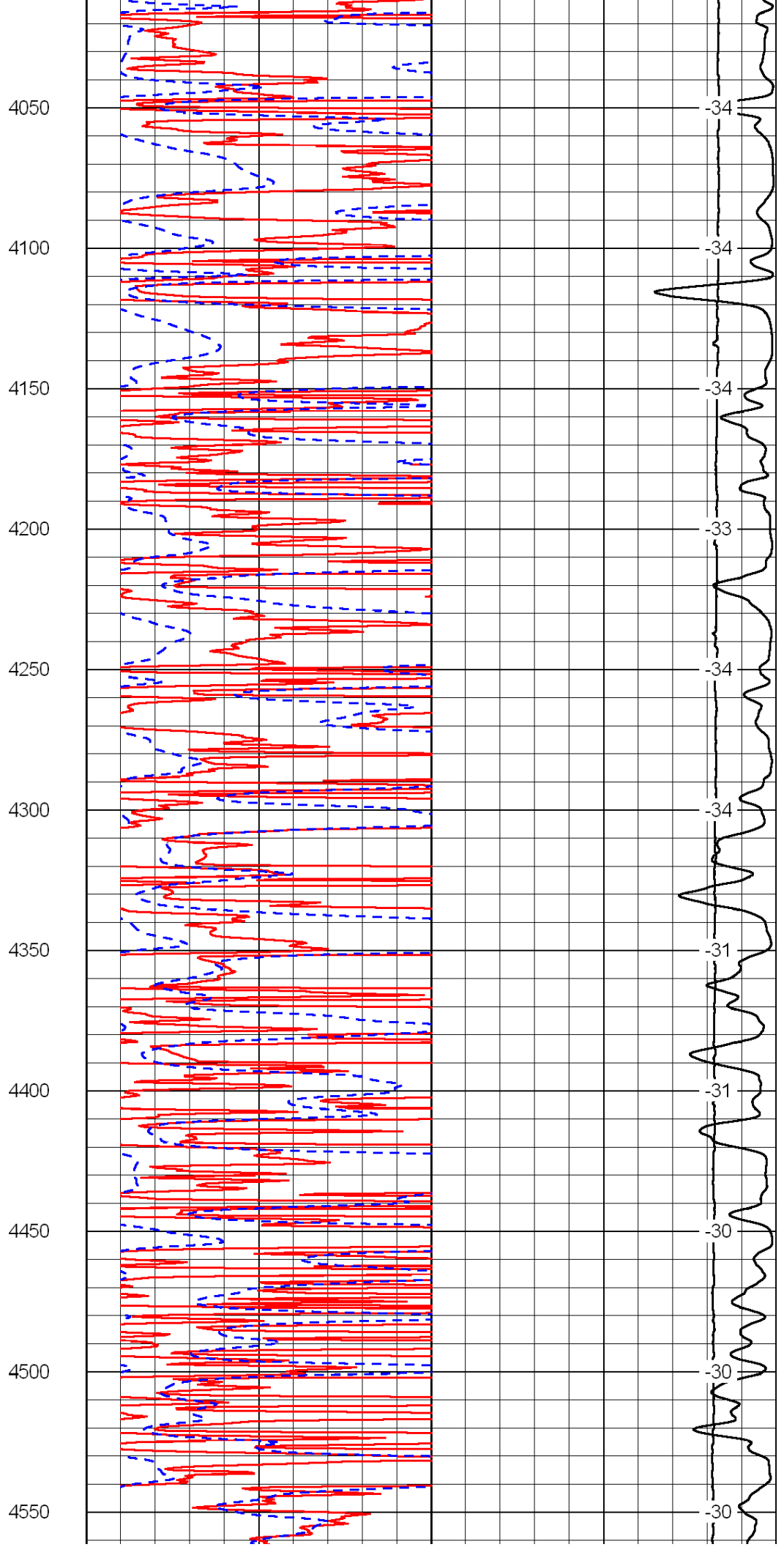
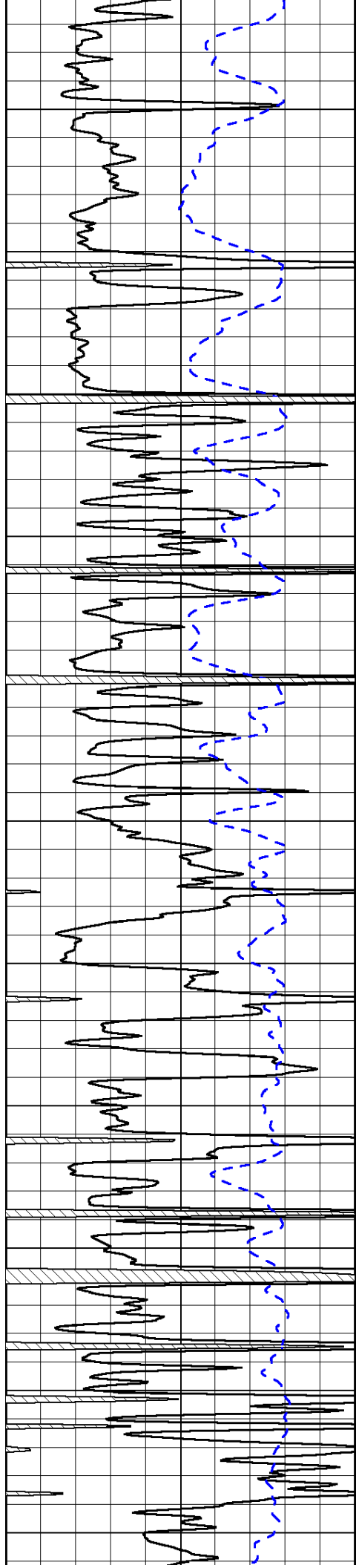


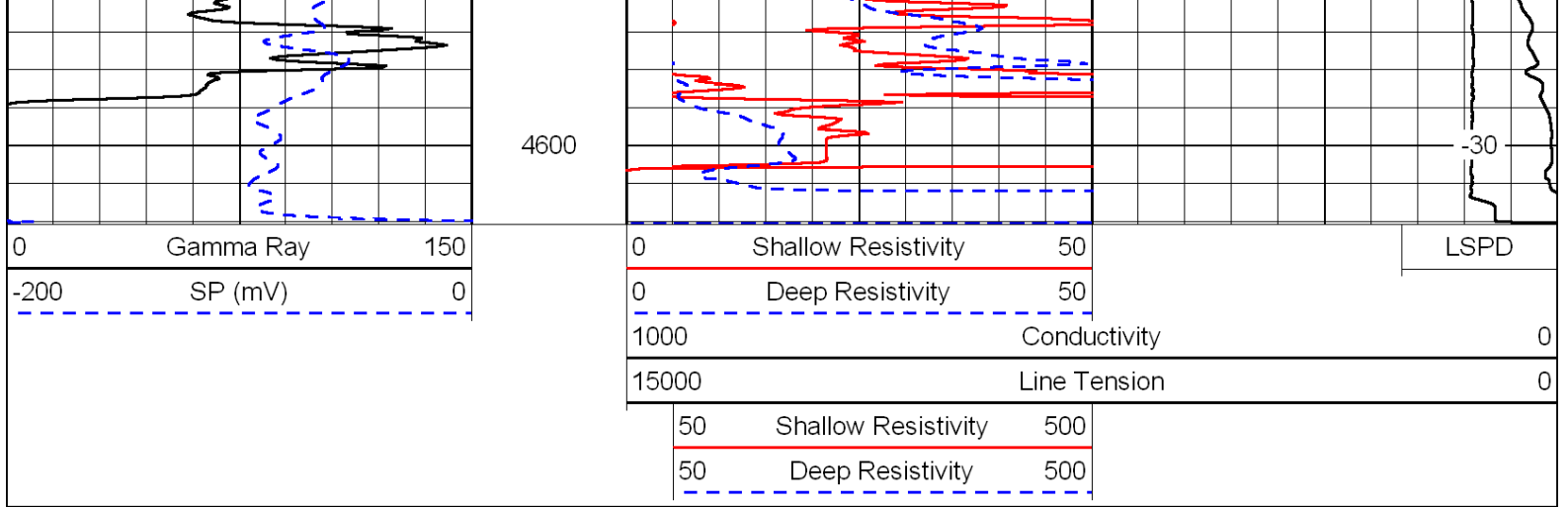




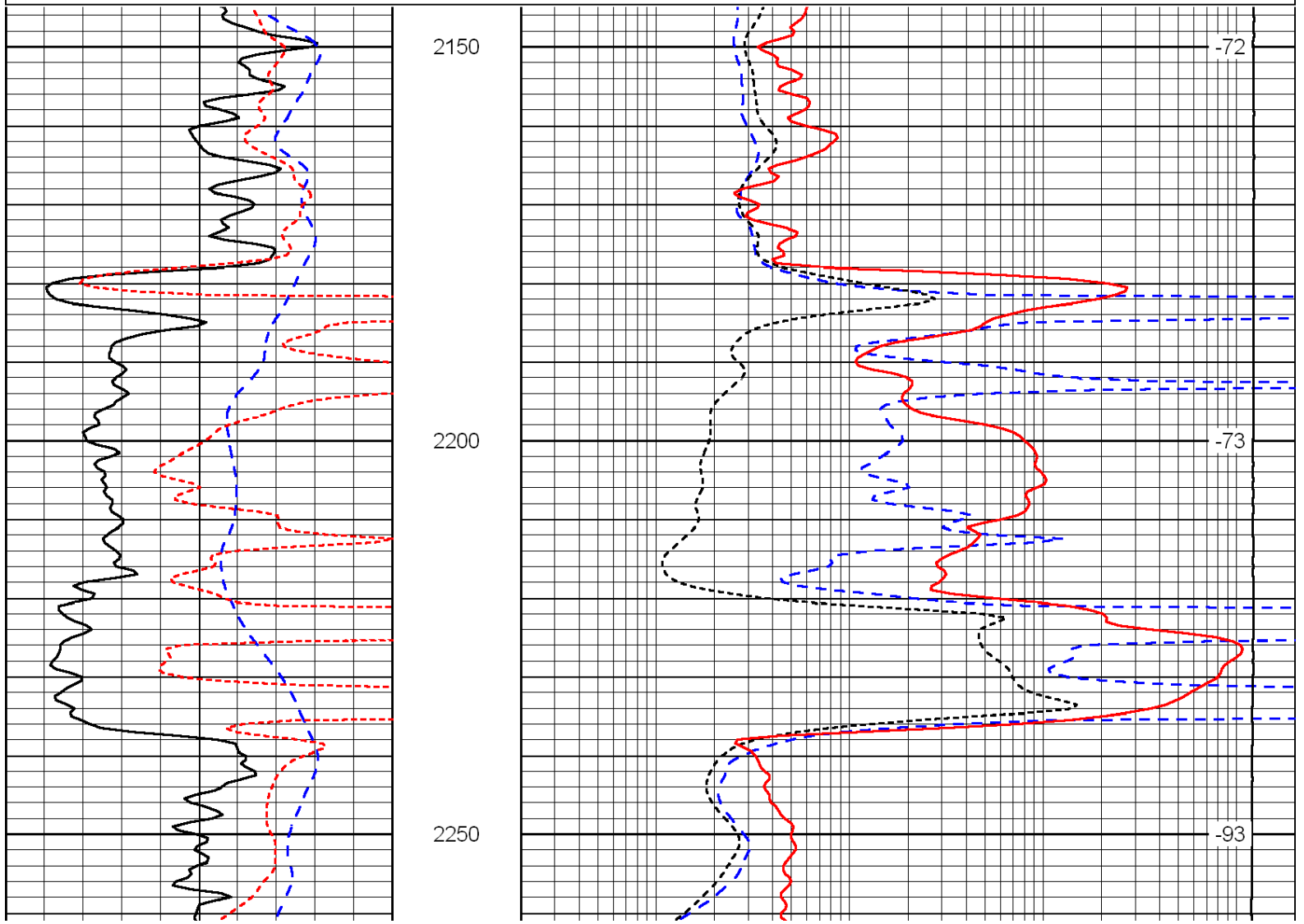
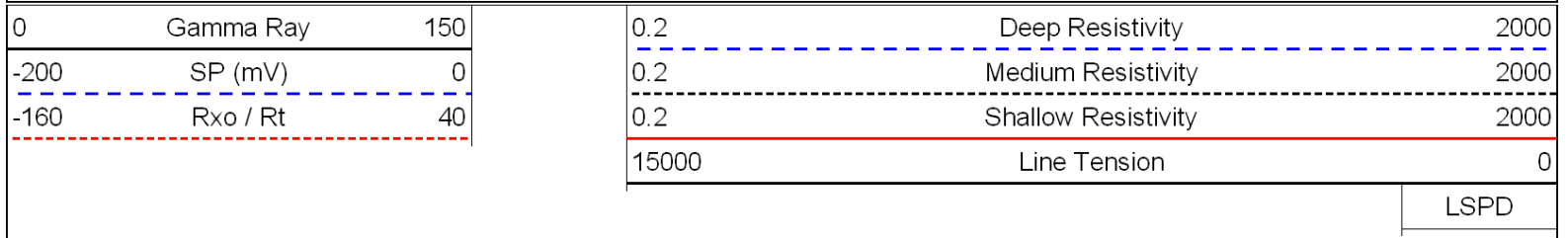


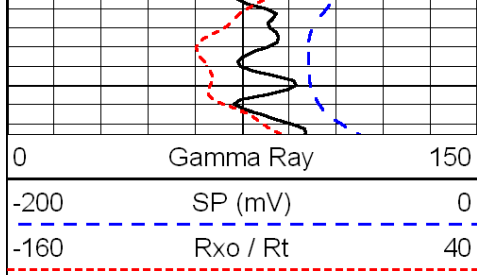




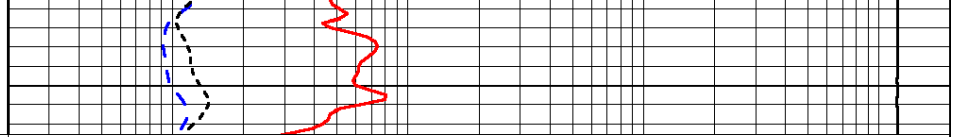


Database File: c:\warrior\data\larson_cowdery no. 3-29\larson_cowdery_3-29hd.db
 Dataset Pathname: dil\larsstck
 Presentation Format: dil
 Dataset Creation: Fri Apr 08 19:34:29 2011
 Charted by: Depth in Feet scaled 1:240





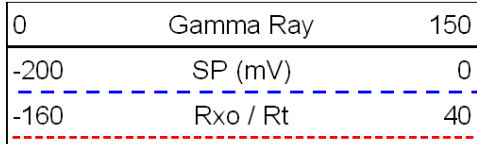
0	Gamma Ray	150
-200	SP (mV)	0
-160	Rxo / Rt	40



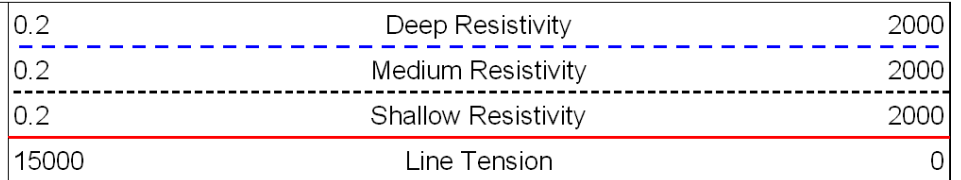
0.2	Deep Resistivity	2000
0.2	Medium Resistivity	2000
0.2	Shallow Resistivity	2000
15000	Line Tension	0

LSPD

Database File: c:\warrior\data\larson_cowdery no. 3-29\larson_cowdery_3-29hd.db
 Dataset Pathname: dil/larsstck
 Presentation Format: dil
 Dataset Creation: Fri Apr 08 19:34:29 2011
 Charted by: Depth in Feet scaled 1:240

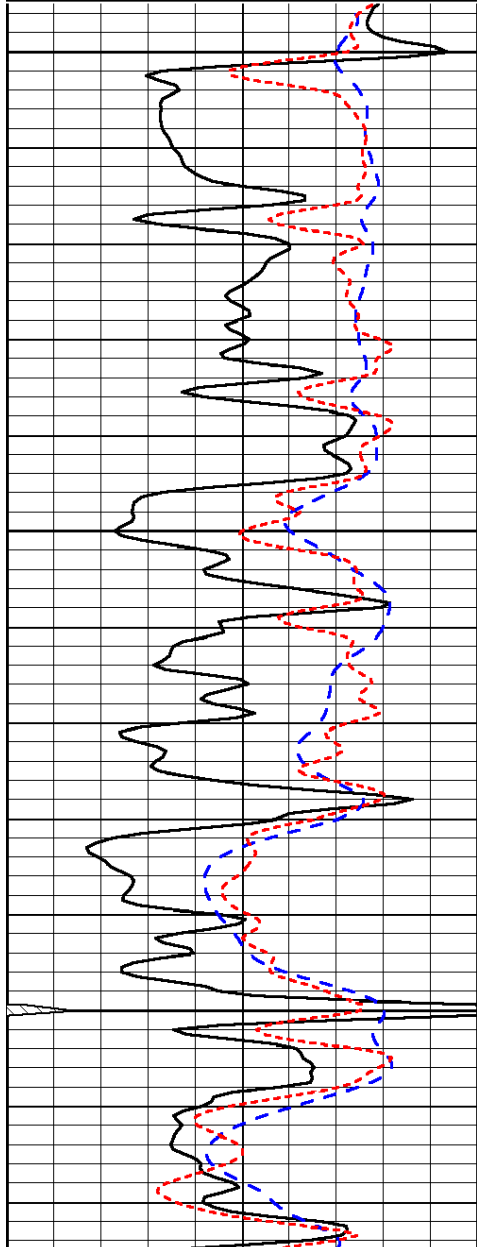


0	Gamma Ray	150
-200	SP (mV)	0
-160	Rxo / Rt	40



0.2	Deep Resistivity	2000
0.2	Medium Resistivity	2000
0.2	Shallow Resistivity	2000
15000	Line Tension	0

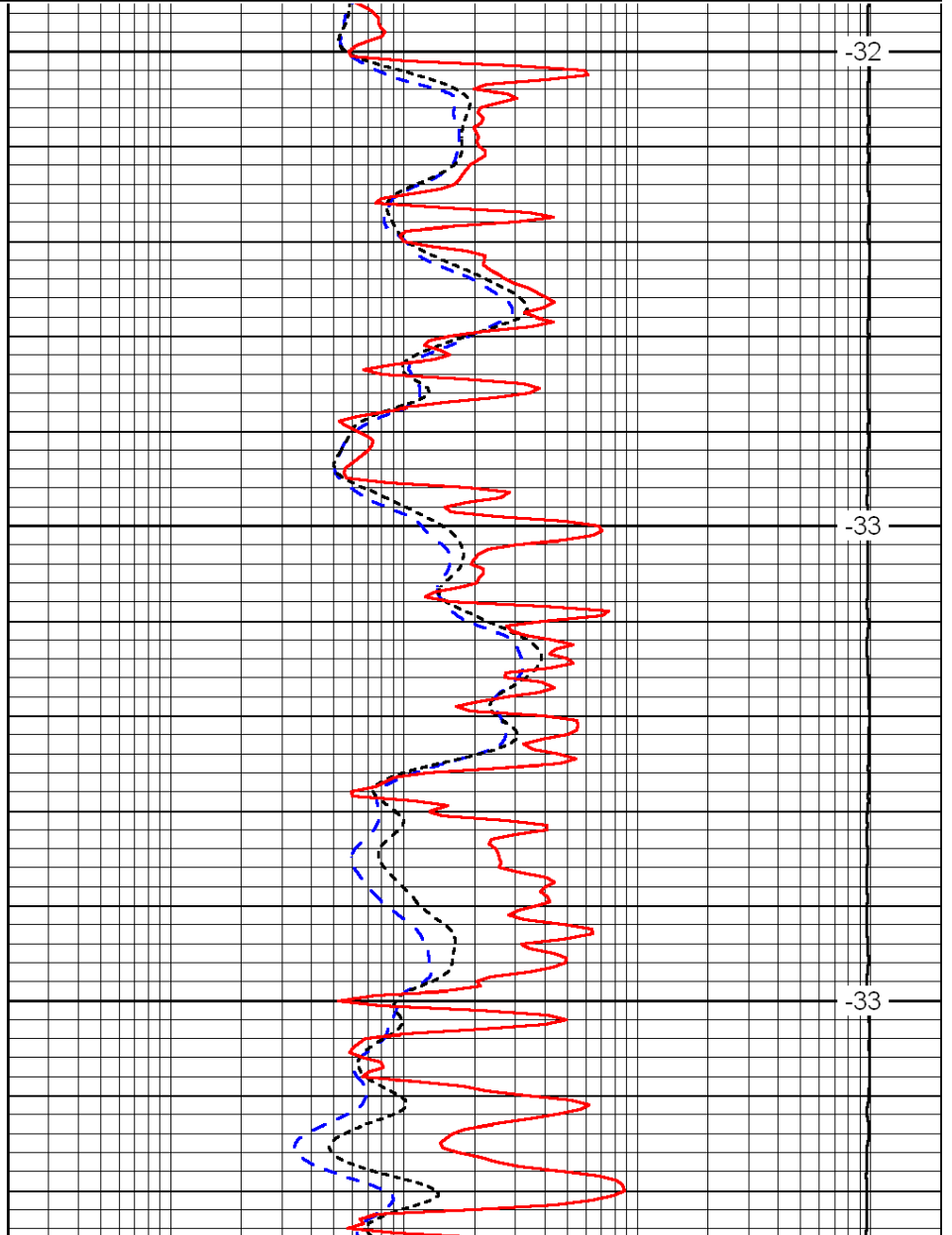
LSPD



3600

3650

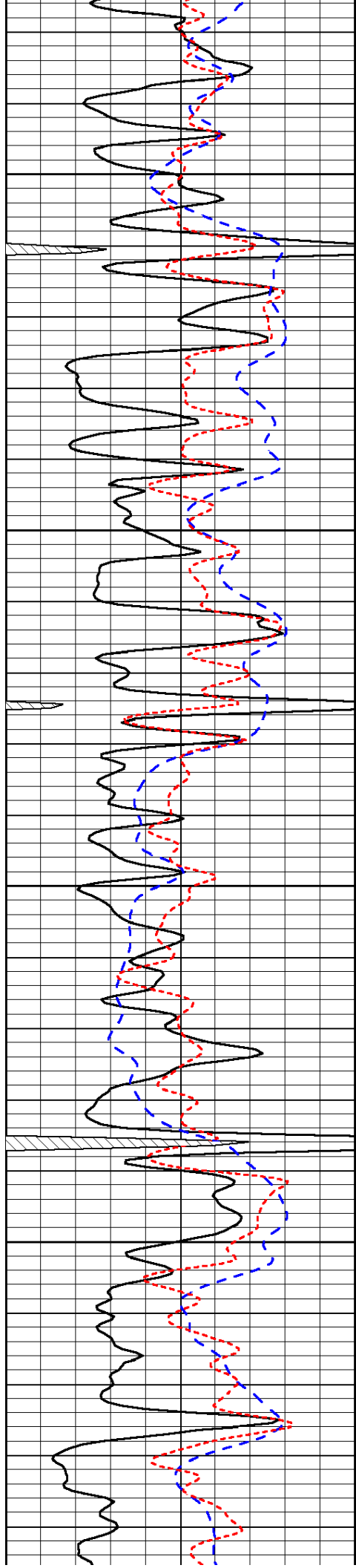
3700



-32

-33

-33

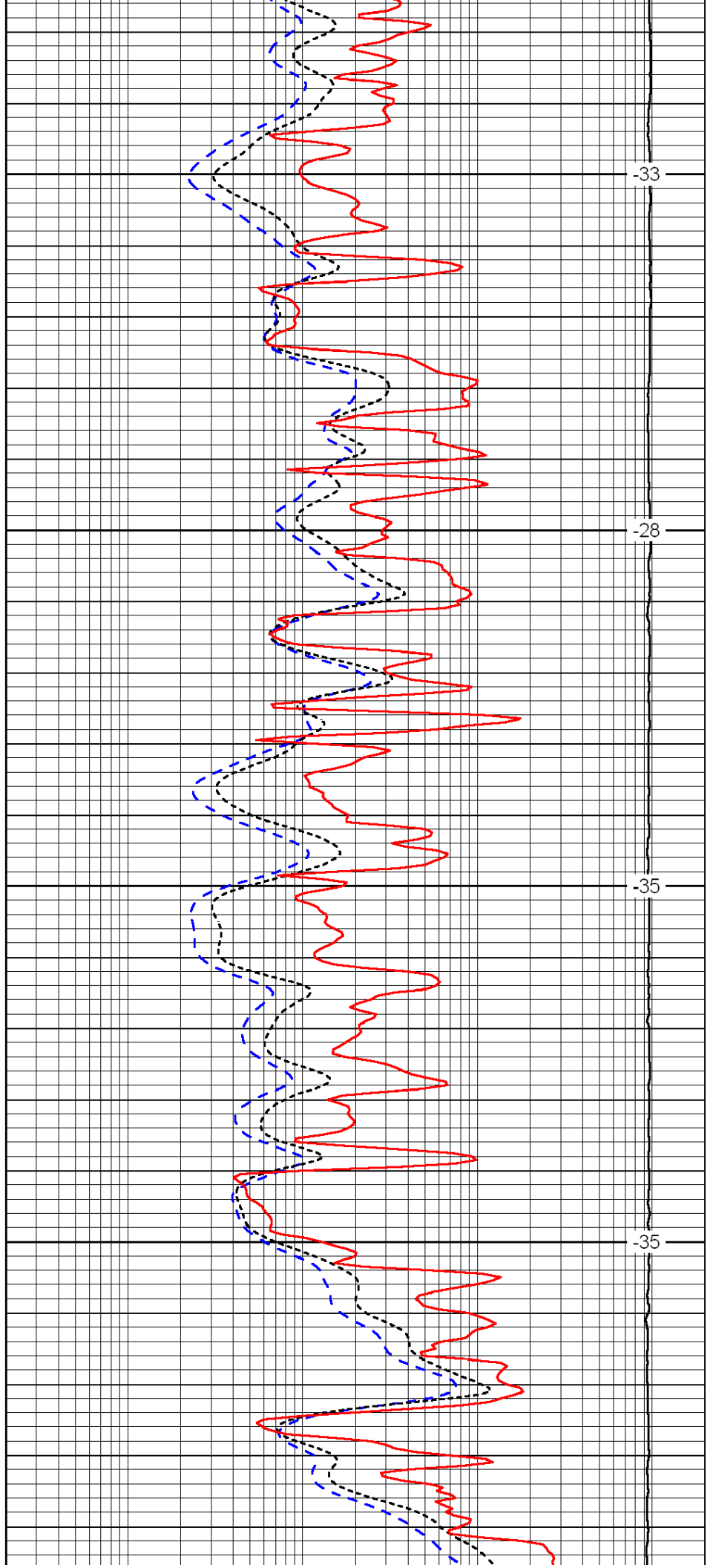


3750

3800

3850

3900

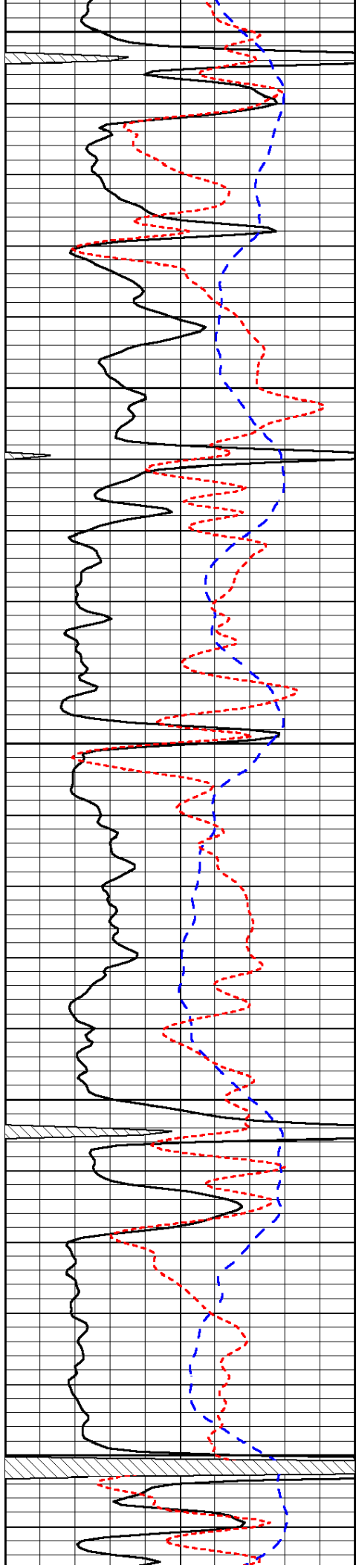


-33

-28

-35

-35



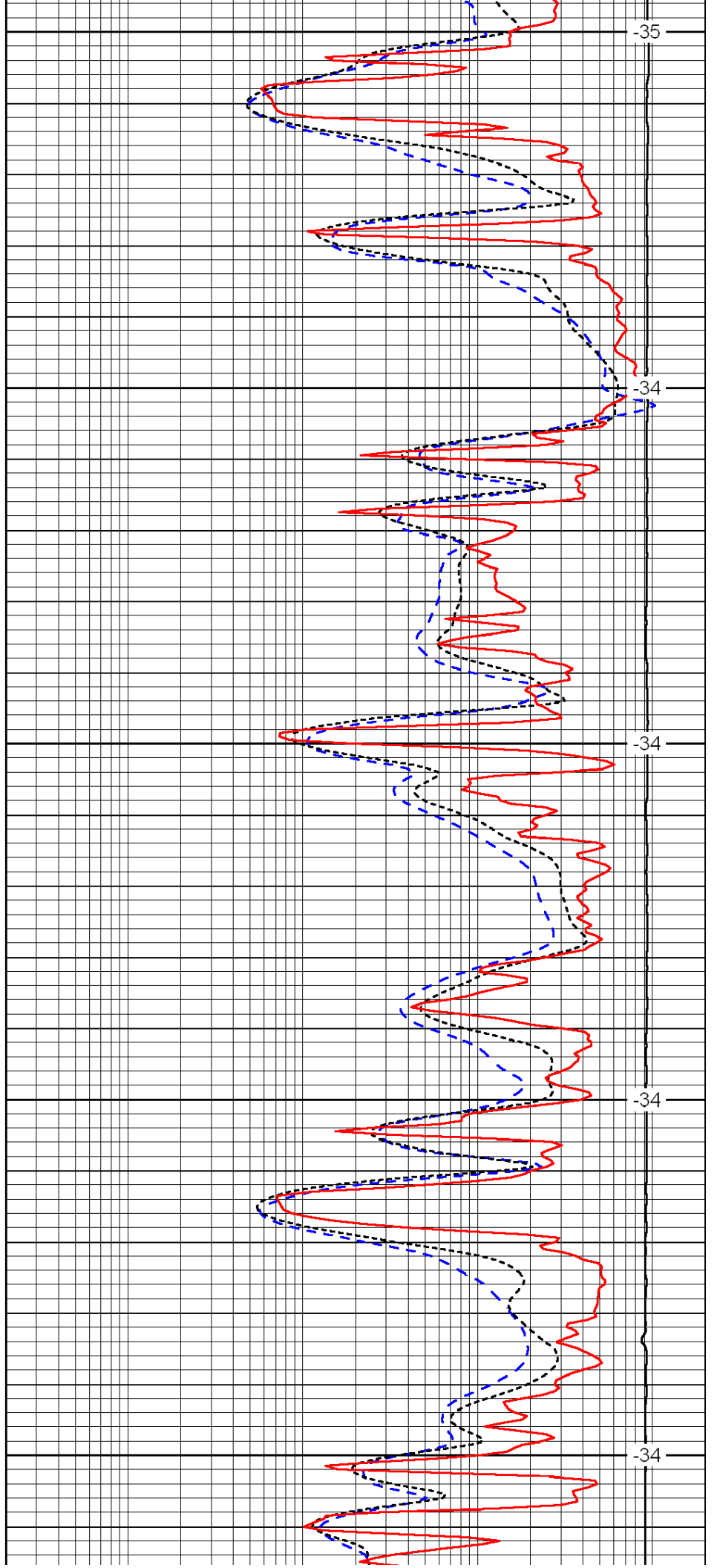
3950

4000

4050

4100

4150



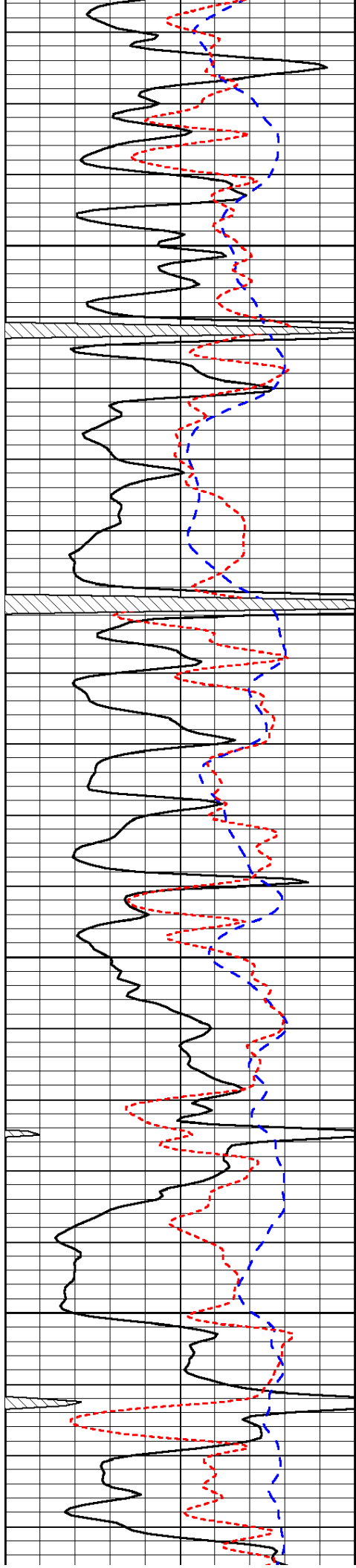
-35

-34

-34

-34

-34

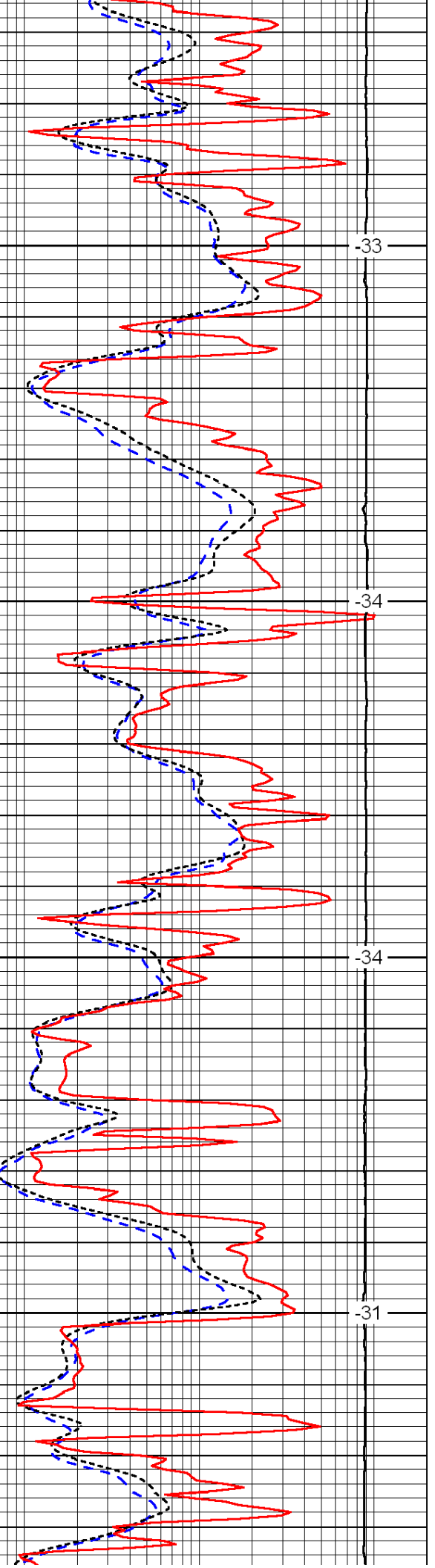


4200

4250

4300

4350

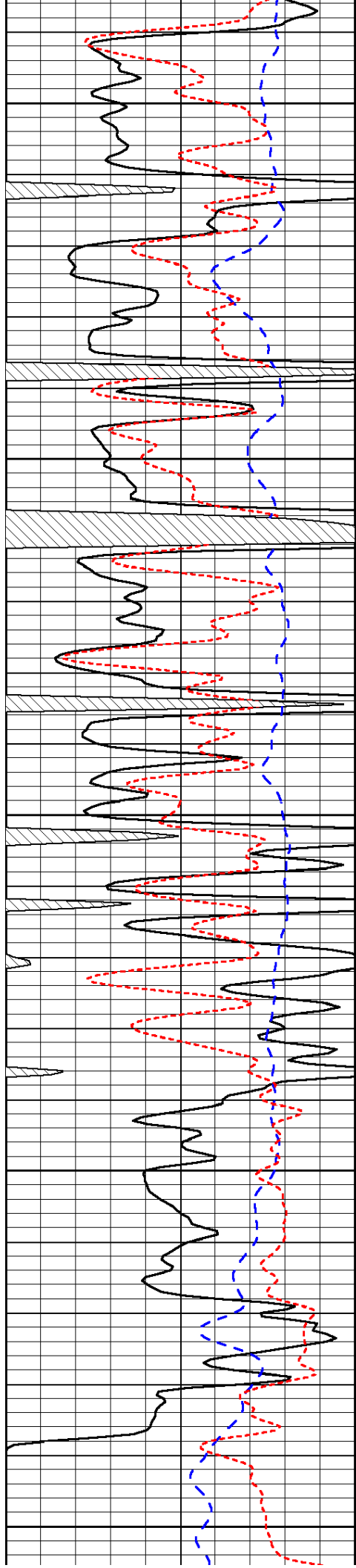


-33

-34

-34

-31



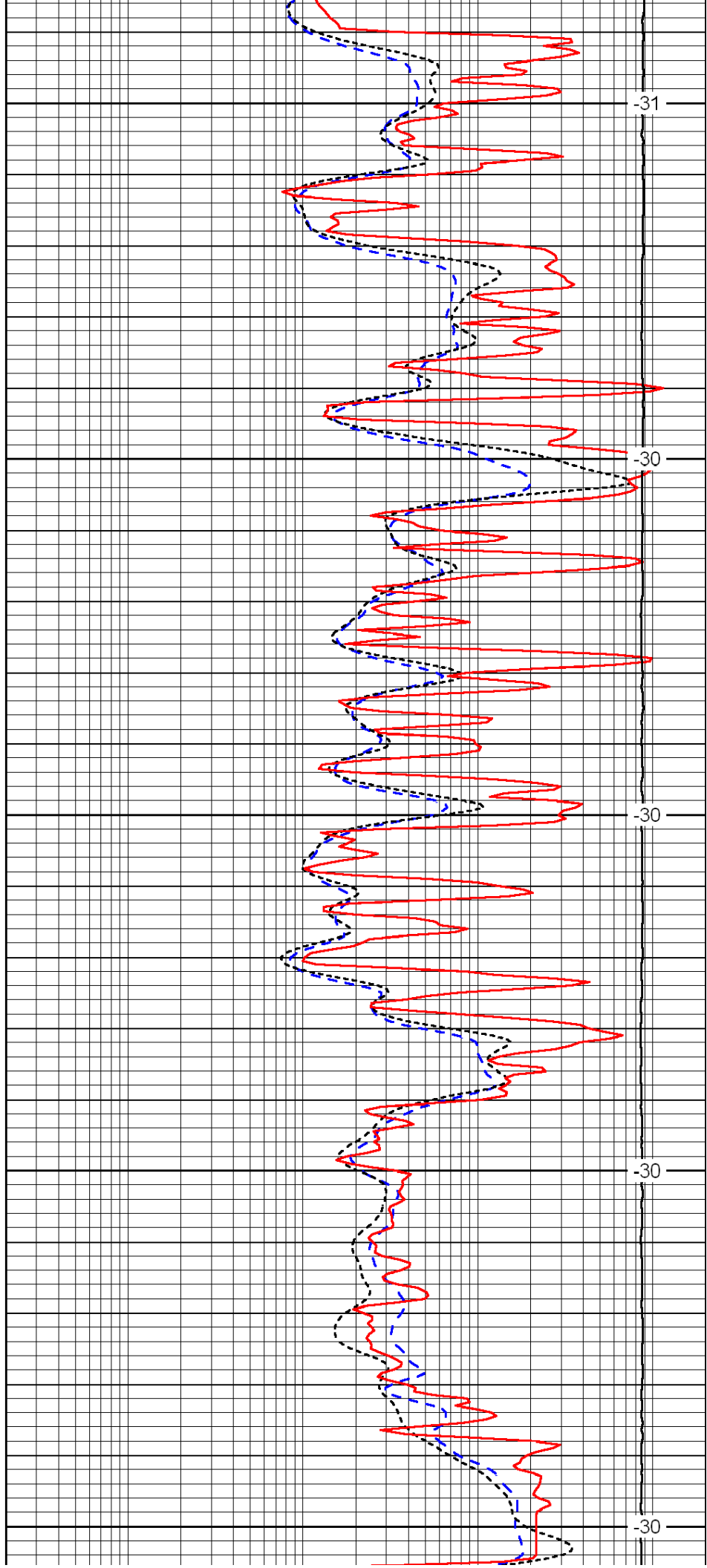
4400

4450

4500

4550

4600



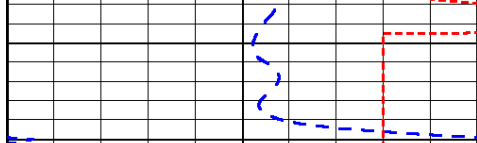
-31

-30

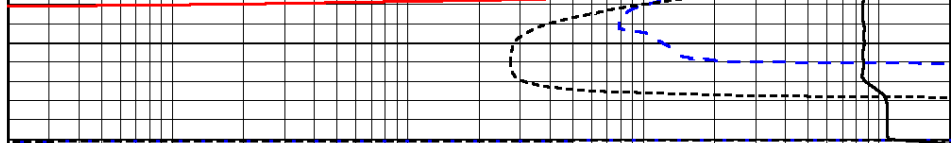
-30

-30

-30



0	Gamma Ray	150
-200	SP (mV)	0
-160	Rxo / Rt	40



0.2	Deep Resistivity	2000
0.2	Medium Resistivity	2000
0.2	Shallow Resistivity	2000
15000	Line Tension	0

LSPD