



# Microresistivity Log

**DIGITAL LOG** (785) 625-3858

API No.	15-101-22,287-00-00		
Company	Larson Engineering, Inc.		
Well	Cowdery No. 3-29		
Field	Cowdery		
County	Lane	State	Kansas
Location	SW NW NE NE 588' FNL & 1,089' FEL		
Sec: 29	Twp: 18S	Rge: 30W	
Permanent Datum	Ground Level	Elevation	2889
Log Measured From	Kelly Bushing	7 Ft. Above Perm. Datum	
Drilling Measured From	Kelly Bushing		
		Other Services	CNL/CDL DIL
		Elevation	K.B. 2896 D.F. 2889 G.L. 2889

Date	4/8/2011
Run Number	Two
Depth Driller	4620
Depth Logger	4614
Bottom Logged Interval	4613
Top Log Interval	3600
Casing Driller	8.625 @ 256
Casing Logger	254
Bit Size	7.875
Type Fluid in Hole	Chemical
Salinity, ppm CL	3000
Density / Viscosity	9.1   67
pH / Fluid Loss	11.5   7.2
Source of Sample	Flowline
Rm @ Meas. Temp	.60 @ 66
Rmf @ Meas. Temp	.45 @ 66
Rmc @ Meas. Temp	.81 @ 66
Source of Rmf / Rmc	Charts
Rm @ BHT	.32 @ 122
Operating Rig Time	4 Hours
Max Rec. Temp. F	122
Equipment Number	10
Location	Hays
Recorded By	J. Long
Witnessed By	Vern Schrag

<<< Fold Here >>>

All interpretations are opinions based on inferences from electrical or other measurements and we cannot and do not guarantee the accuracy or correctness of any interpretation, and we shall not, except in the case of gross or willful negligence on our part, be liable or responsible for any loss, costs, damages, or expenses incurred or sustained by anyone resulting from any interpretation made by any of our officers, agents or employees. These interpretations are also subject to our general terms and conditions set out in our current Price Schedule.

**Comments**

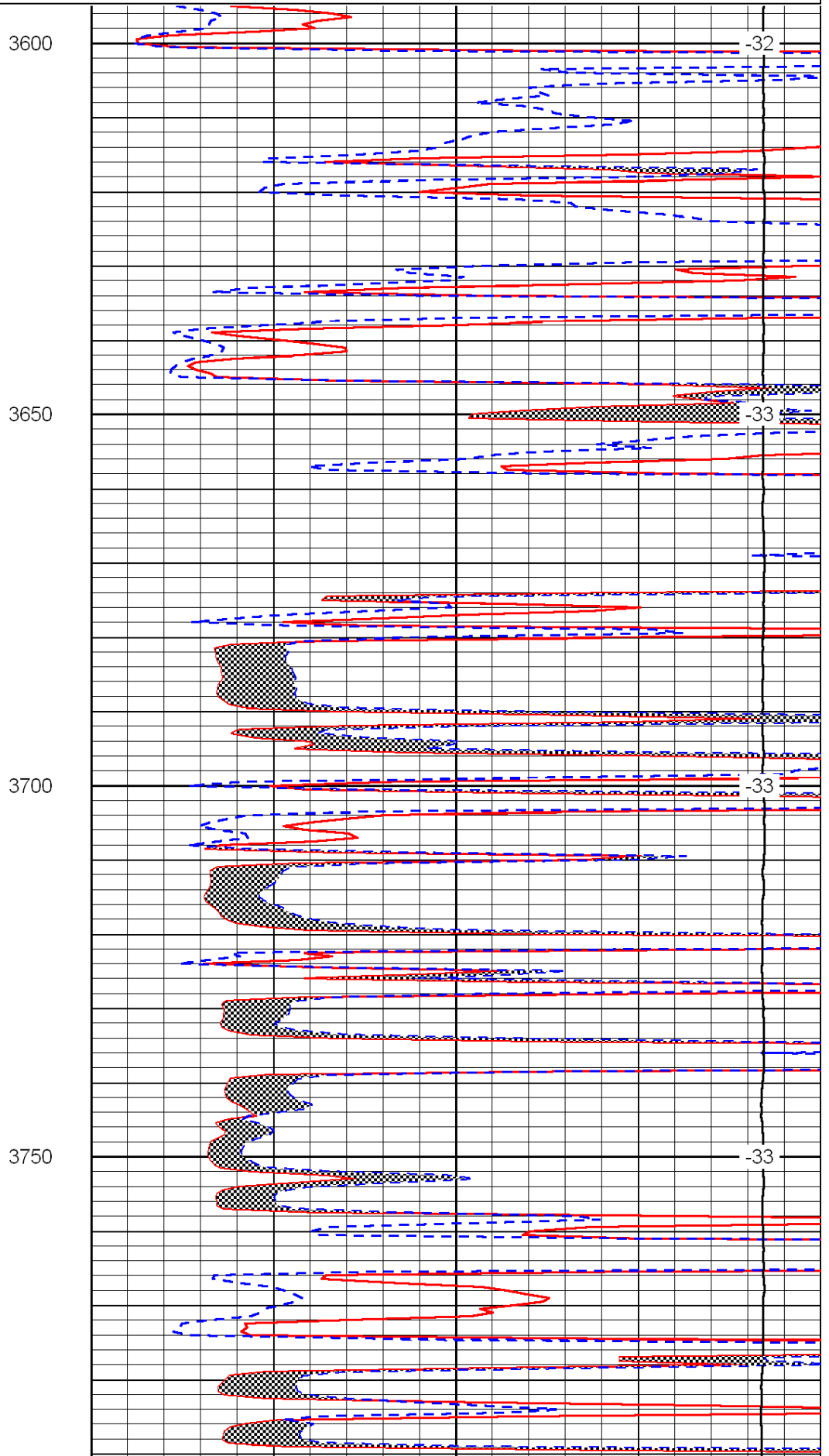
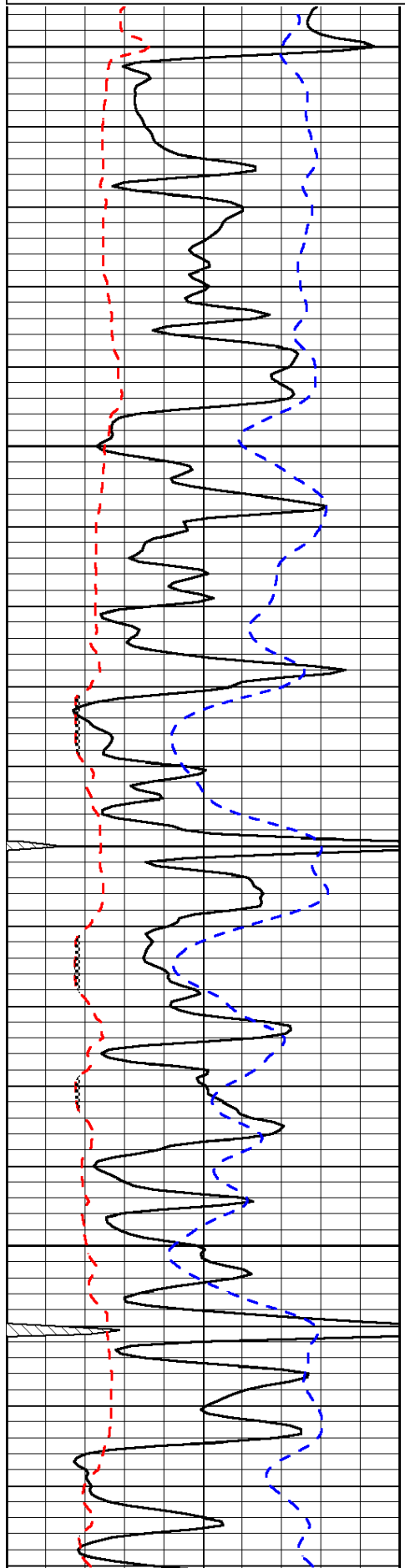
Thank you for using Log-Tech, Inc.  
(785) 625-3858

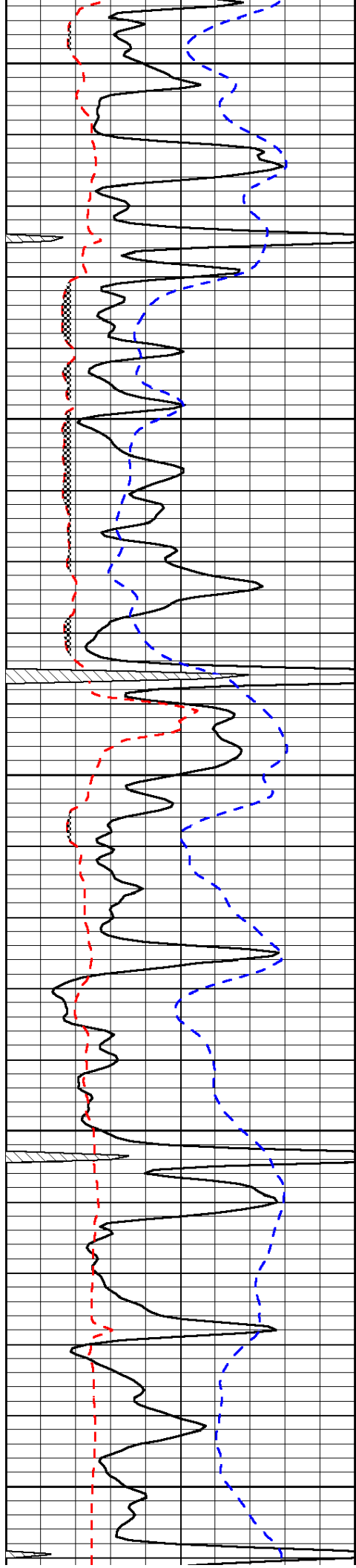
Dighton, 10 West to Bison Road, 1.2 Miles South, West Into (On Lease Road)

0	Gamma Ray	150
6	Micro Log Caliper (GAPI)	16
-200	SP (mV)	0

0	Micro Inverse 1 X 1	40
0	Micro Normal 2"	40
15000	Line Weight	0

LSPD





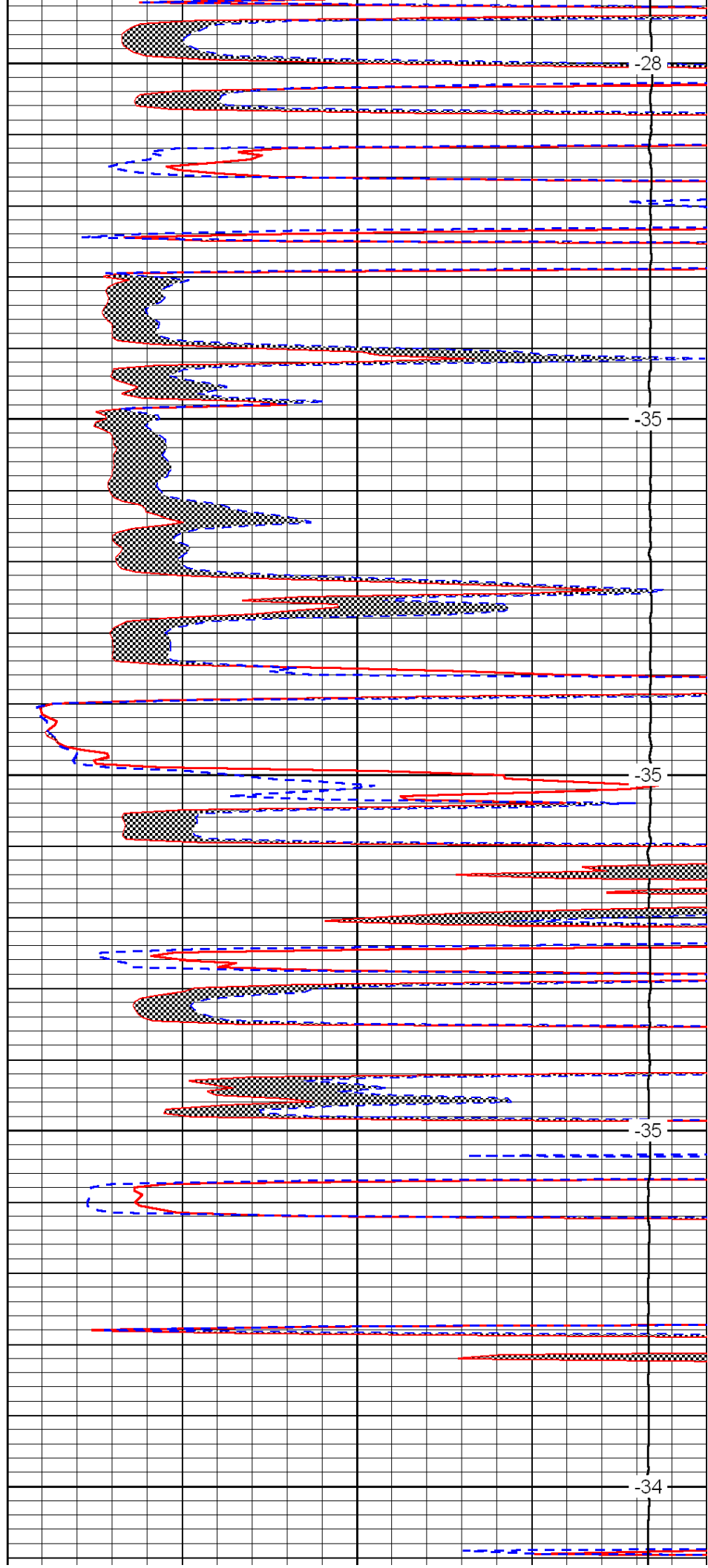
3800

3850

3900

3950

4000



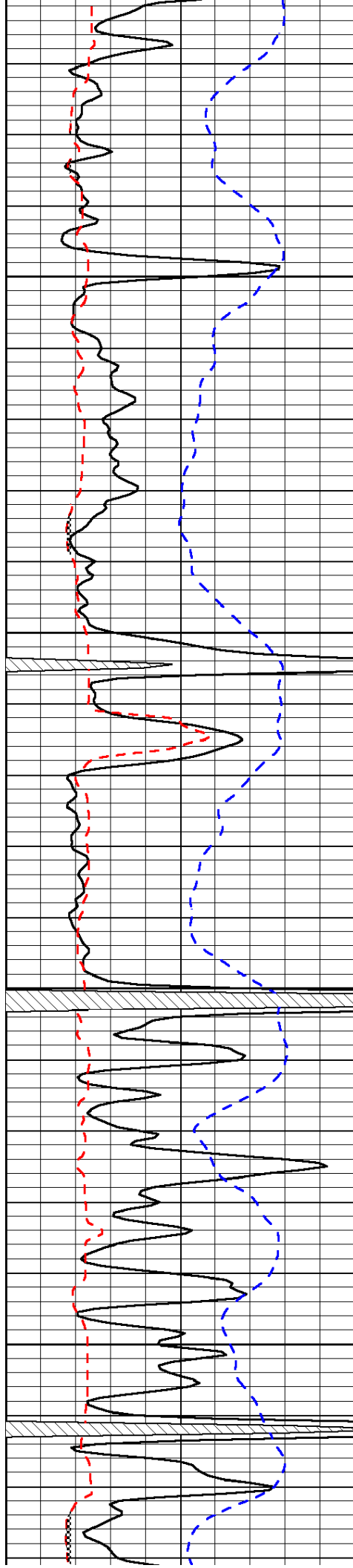
-28

-35

-35

-35

-34

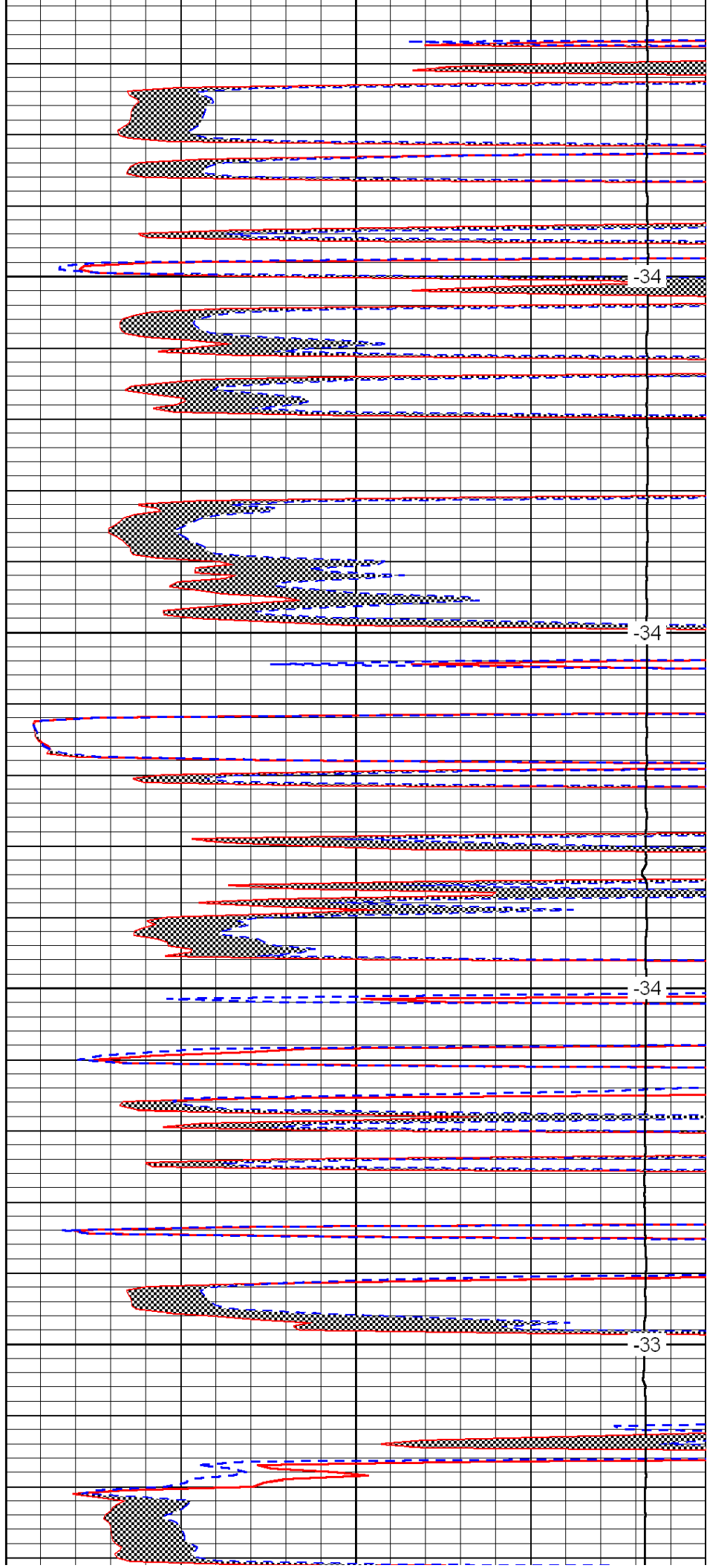


4050

4100

4150

4200

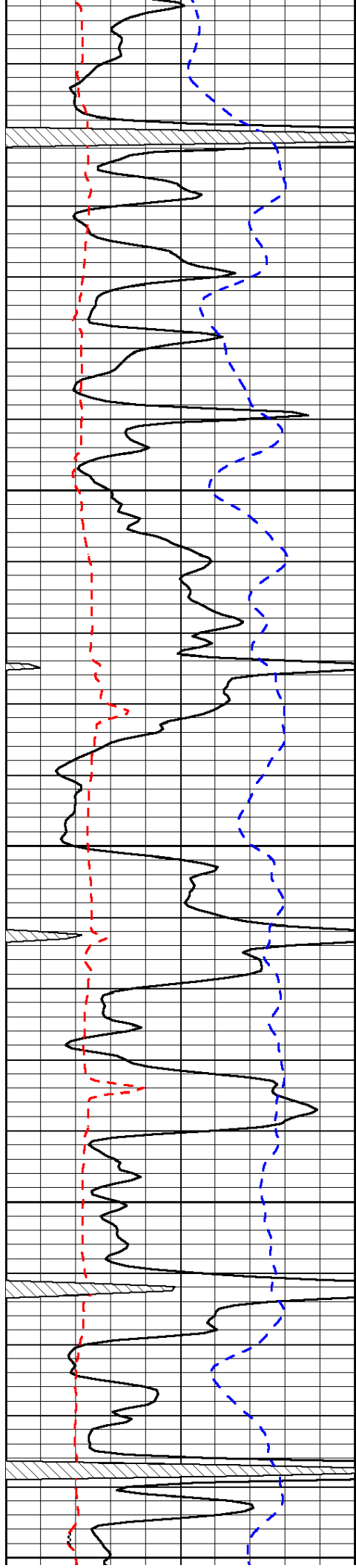


-34

-34

-34

-33



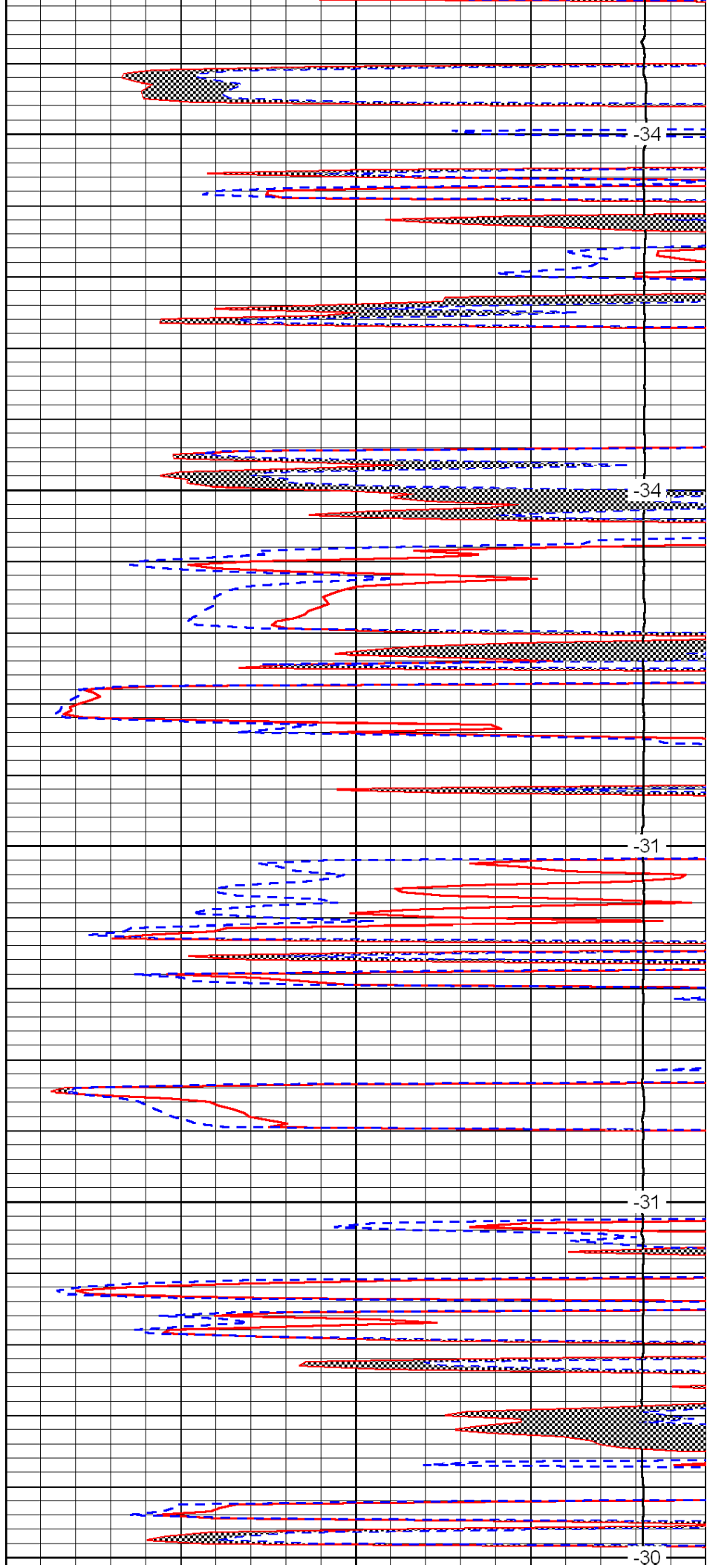
4250

4300

4350

4400

4450



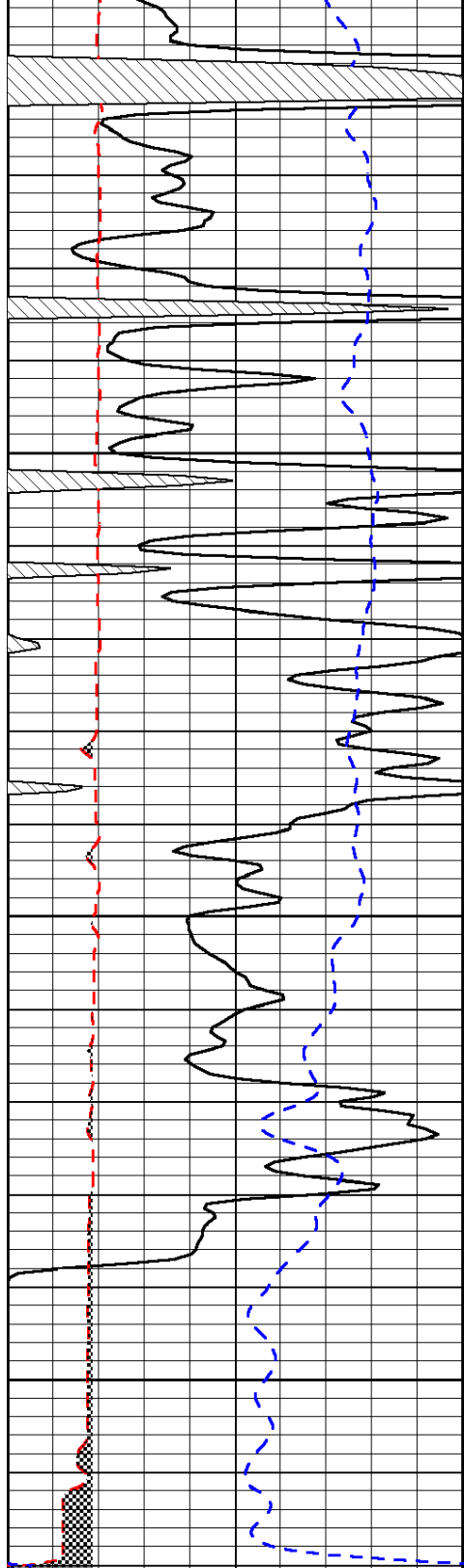
-34

-34

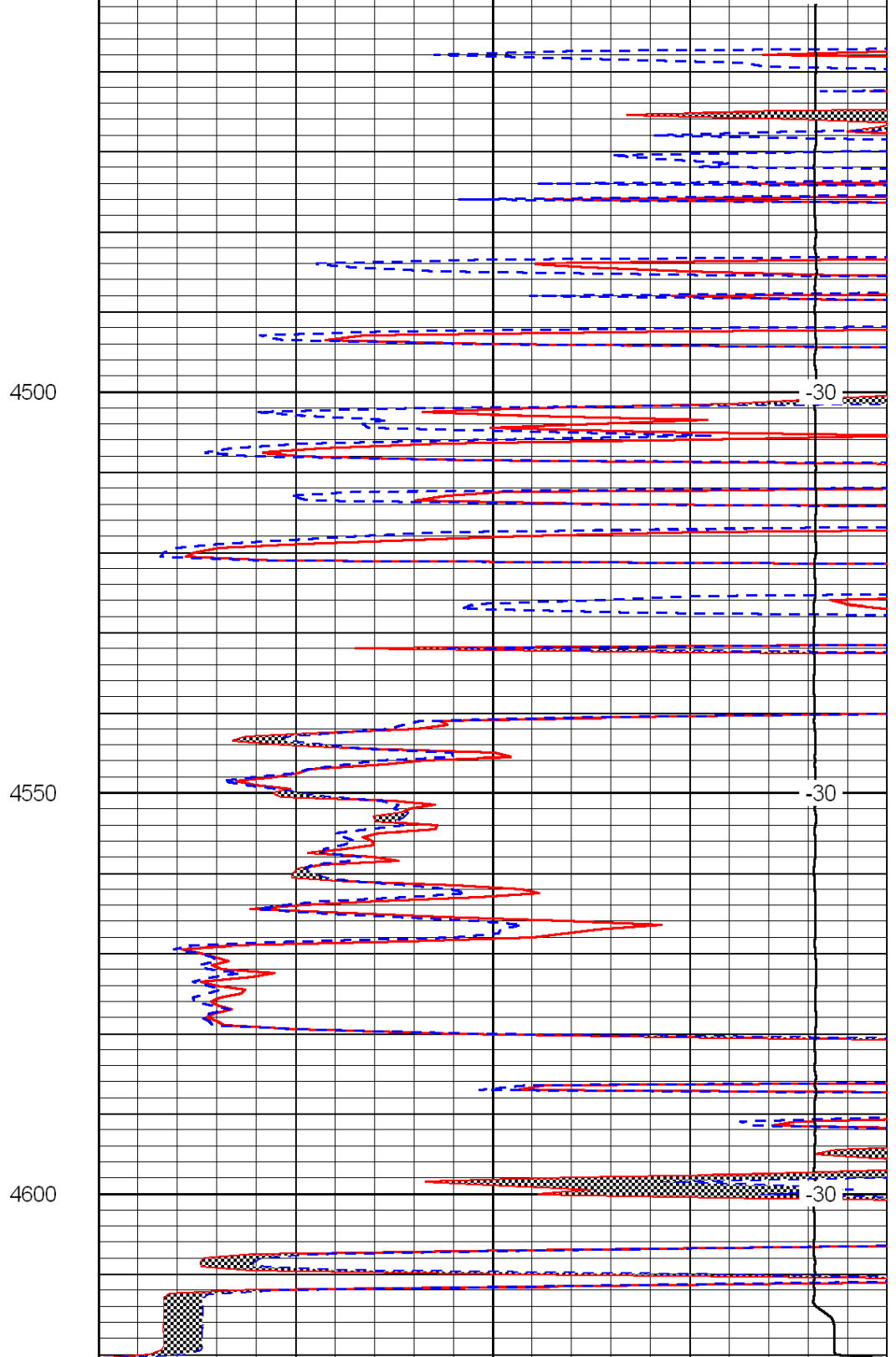
-31

-31

-30



0	Gamma Ray	150
6	Micro Log Caliper (GAPI)	16
-200	SP (mV)	0



0	Micro Inverse 1 X 1	40
0	Micro Normal 2''	40
15000	Line Weight	0

LSPD