

Tucker
WIRELINE SERVICES

BOREHOLE COMPENSATED

SONIC LOG

Company AMERICAN ENERGIES CORP
Well ADE #1-6
Field WILDCAT
County MARION
State KANSAS
Country USA
API No. 15-115-21422

File No : 55600
Company : AMERICAN ENERGIES CORPORATION
Well : ADE #1-6
Field : WILDCAT
County : MARION
State : KANSAS
Country : USA
API No : 15-115-21422

Location :
1650' FSL & 1650' FEL
SE NW SE

LSD : Sect : 6 Twp : 19S Rge : 1E

Permanent Datum: GL Elevations: KB 1560.00 Ft GRT MLT
Drilling Measured From: KB DF 1559.00 Ft CNT CST
Log Measured From: KB DF 1559.00 Ft LDT PIT
Above Permanent Datum: 9.00 Ft GL 1551.00

Date	May 20 2011	
Run Number	1	
Depth--Driller	2959.0	Ft
Depth--Logger	2961.0	Ft
First Reading	2937.0	Ft
Last Reading	222.0	Ft
Casing--Driller	222.0	Ft
Casing--Logger	222.0	Ft
Bit Size	7.875	In
Casing Size	8.625	In
Hole Fluid Type	WBM	
Density	8.5	LBS/GAL
Fluid Loss	0.0	CC
PH/Viscosity	0.0	50.0 SEC
Sample Source	MEASURED	
RMF@Measured Temp.	1.000	@ 45 F
RMF@Measured Temp	0.850	@ 45 F
RMC@Measured Temp.	1.150	@ 45 F
Source RMF/RMC	CALCULATED/CALCULATED	
RM@BHT	0.000	@ 80 F
Time Circulation Stopped		
Max Recorded Temp.	80	F
Equipment/Base	TRK123	TULSA
Recorded By	T. MONTGOMERY	
Witnessed By	D. BARKER	

The customer is hereby warned that by providing the log data herein, T. W. S. does not agree to provide any interpretation of log data, conversion of log data to physical rock parameters or recommendations. T. W. S. does not guarantee or warrant either expressly or impliedly, the accuracy of any interpretation of log data, conversion of log data to physical rock parameters or recommendations which may be given by T. W. S. personnel. Any interpretation, conversion or recommendation is not part of the consideration for the agreement between the parties and is not part of any part of the charge by T. W. S. for its services. Any user of the log data is warned that said user is not entitled to rely on interpretations, conversions or recommendations as aforesaid.

Bitsize Intervals		Casing Strings		
Size (In)	Bottom (Ft)	Size (In)	Weight (Lbs)	Bottom (Ft)
7.875	2959.00	8.625	24.00	222.00

Run Number	1	
Date	May 20 2011	
Date/Time On Bottom		
Depth to Fluid	0.0	Ft
Salinity	0.000	PPM
RMF@BHT	0.000	@ 80 F
RMC@BHT	0.000	@ 80 F

Comments

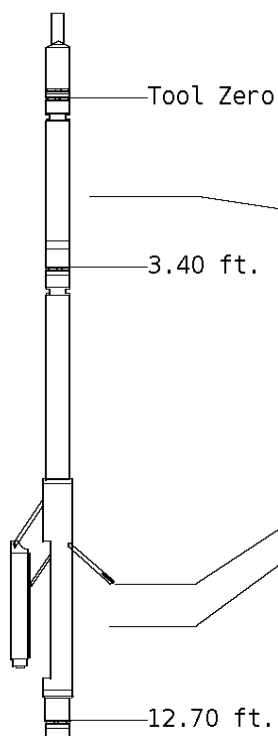
ALL PRESENTATIONS AS PER CUSTOMER REQUEST
 GRT, CNT, LDT, MLT, CST, AND PIT RUN IN COMBINATION.
 CALIPERS ORIENTED ON X-Y AXIS.
 2.71 G/CC USED TO CALCULATED POROSITY.
 ANNULAR HOLE VOLUME CALCULATED UISING 5.50" PRODUCTION CASING.
 DETAIL PRESENTED FROM TD 2700' AS PER CUSTOMER REQUEST.

GRT: GRP.
 CNT: PHIN, CLCNIN.
 LDT: PORL, LCORN, PECLN, LDENN, PORLLS, CLLDIN.
 MLT: NOR_R, INV_R, MSCLPIN.
 CST: PORS, ITT, CDTF, TT1, TT2, TT3, TT4.
 PIT: ILD, ILM, SPU, SFLAEC.

OPERATORS:
 M. GARNER
 S. DAVIS

Tool String Schematic

Total Tool Length - 66.95 ft.
 Maximum Outside diameter - 6.00 in.
 Net Weight in Air - 1171.00 lbs.



Tool: GRT-B **Length:** 3.40 ft. **O.D.** 3.60 in.

Gamma Ray Controller

Sonde ID :GRT-BA-15

Measure Point	Tool Offset	Stack Offset	Bottom Offset
GRP	2.00	2.00	64.95

Tool: CNT-AA **Length:** 9.30 ft. **O.D.** 4.36 in.

Compensated Neutron A Pad on NDT-A

Sonde ID :NDT-AC-027

Source ID :N-1046

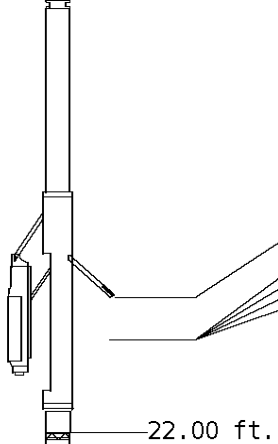
Pad ID :CNP-AA-112

Measure Point	Tool Offset	Stack Offset	Bottom Offset
CLCN	6.00	9.40	57.55
PHIN	6.80	10.20	56.75

Tool: LDT-DA **Length:** 9.30 ft. **O.D.** 4.80 in.

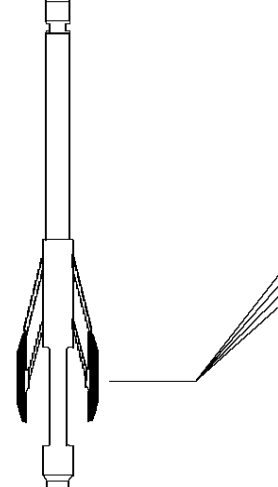
Litho Density D Pad on NDT-A
Sonde ID :PDT-GA-472
Source ID :2991GW
Pad ID :LDP-DA-067

Measure Point	Tool Offset	Stack Offset	Bottom Offset
CLLD	6.00	18.70	48.25
PEL	7.00	19.70	47.25
PES	7.40	20.10	46.85
LDEN	7.20	19.90	47.05
LCOR	7.20	19.90	47.05



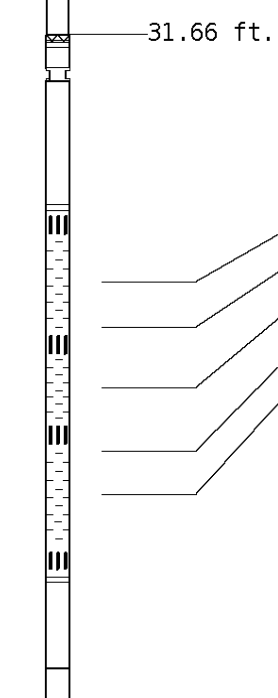
Tool: MST-DA **Length:** 9.66 ft. **O.D.** 6.00 in.
 Micro Spherically Focused (IC)
Sonde ID :MST-NG-26

Measure Point	Tool Offset	Stack Offset	Bottom Offset
MSFL	7.60	29.60	37.35
MSCLP	7.60	29.60	37.35
INV	7.60	29.60	37.35
NOR	7.60	29.60	37.35



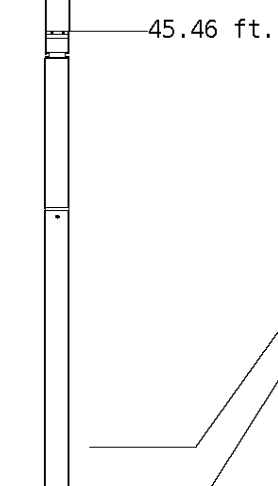
Tool: CST-AD **Length:** 13.80 ft. **O.D.** 3.60 in.
 Open Hole Sonic
Sonde ID :CST-AD-38

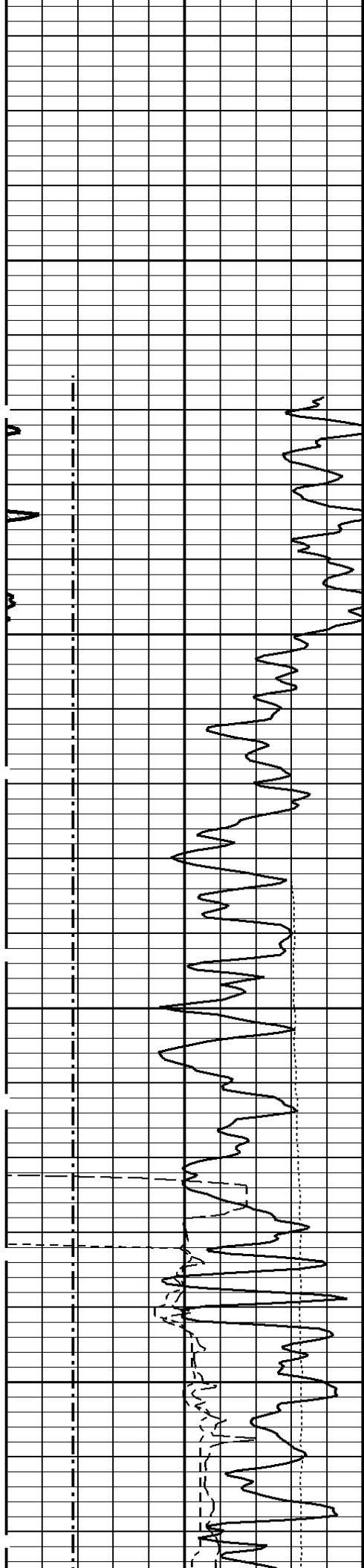
Measure Point	Tool Offset	Stack Offset	Bottom Offset
TT1	4.80	36.46	30.49
TT3	5.80	37.46	29.49
CDT	7.30	38.96	27.99
TT4	8.80	40.46	26.49
TT2	9.80	41.46	25.49



Tool: PIT-CA **Length:** 21.49 ft. **O.D.** 3.62 in.
 Phased Dual Induction w/ RM & D
Sonde ID :PIT-CA-069

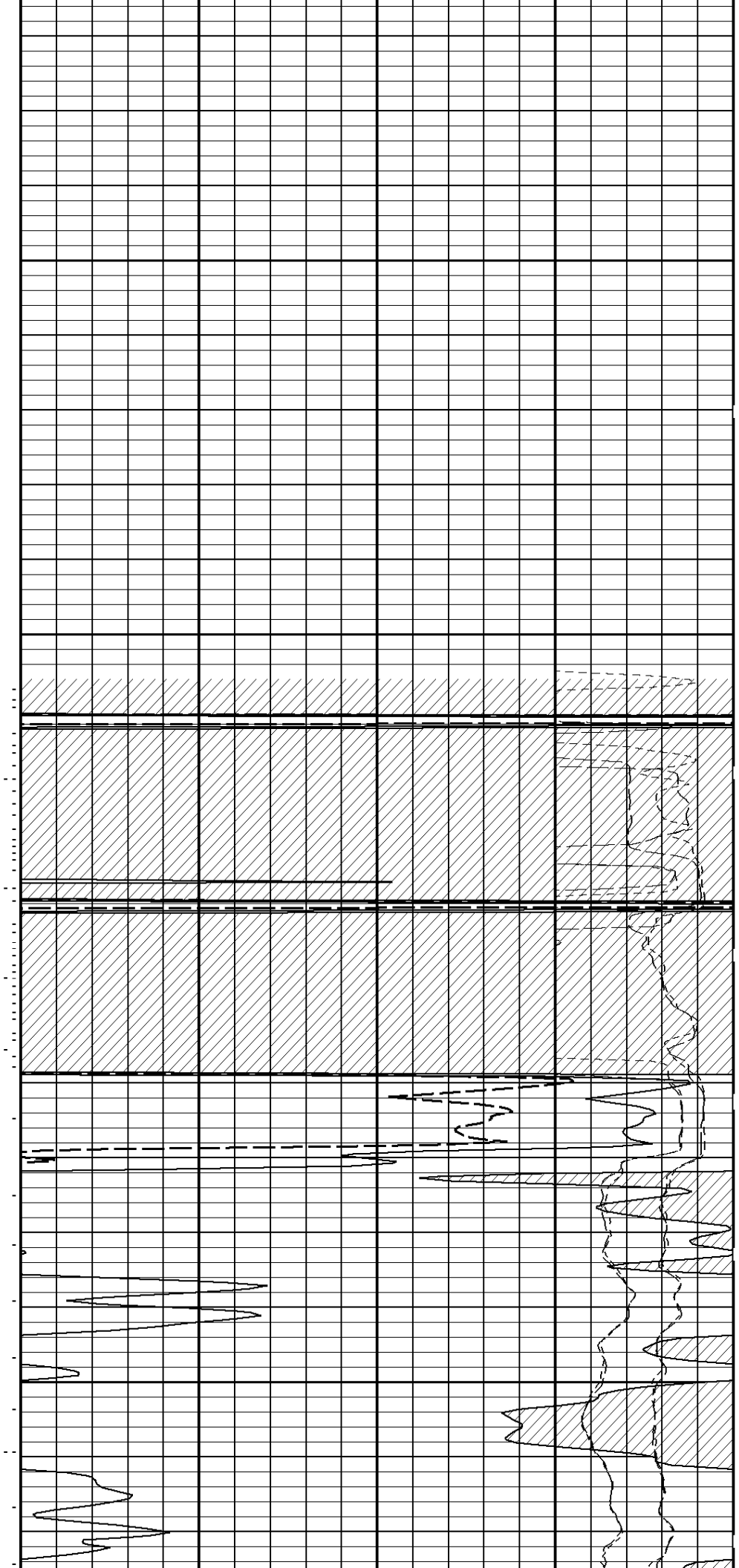
Measure Point	Tool Offset	Stack Offset	Bottom Offset
ILD	8.92	54.38	12.56
ILM	10.10	55.56	11.39
SFLU	17.49	62.95	4.00
SP	20.60	66.06	0.88

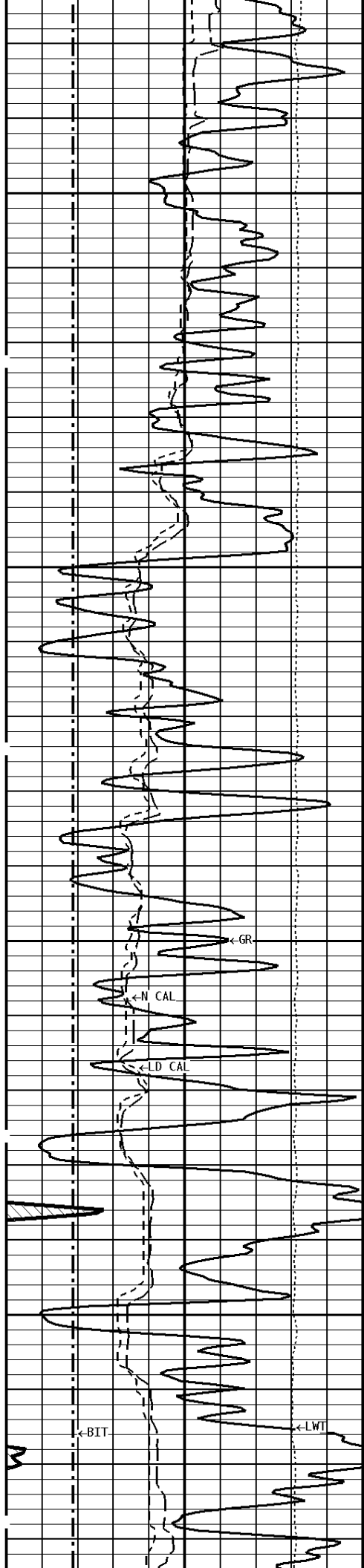




100

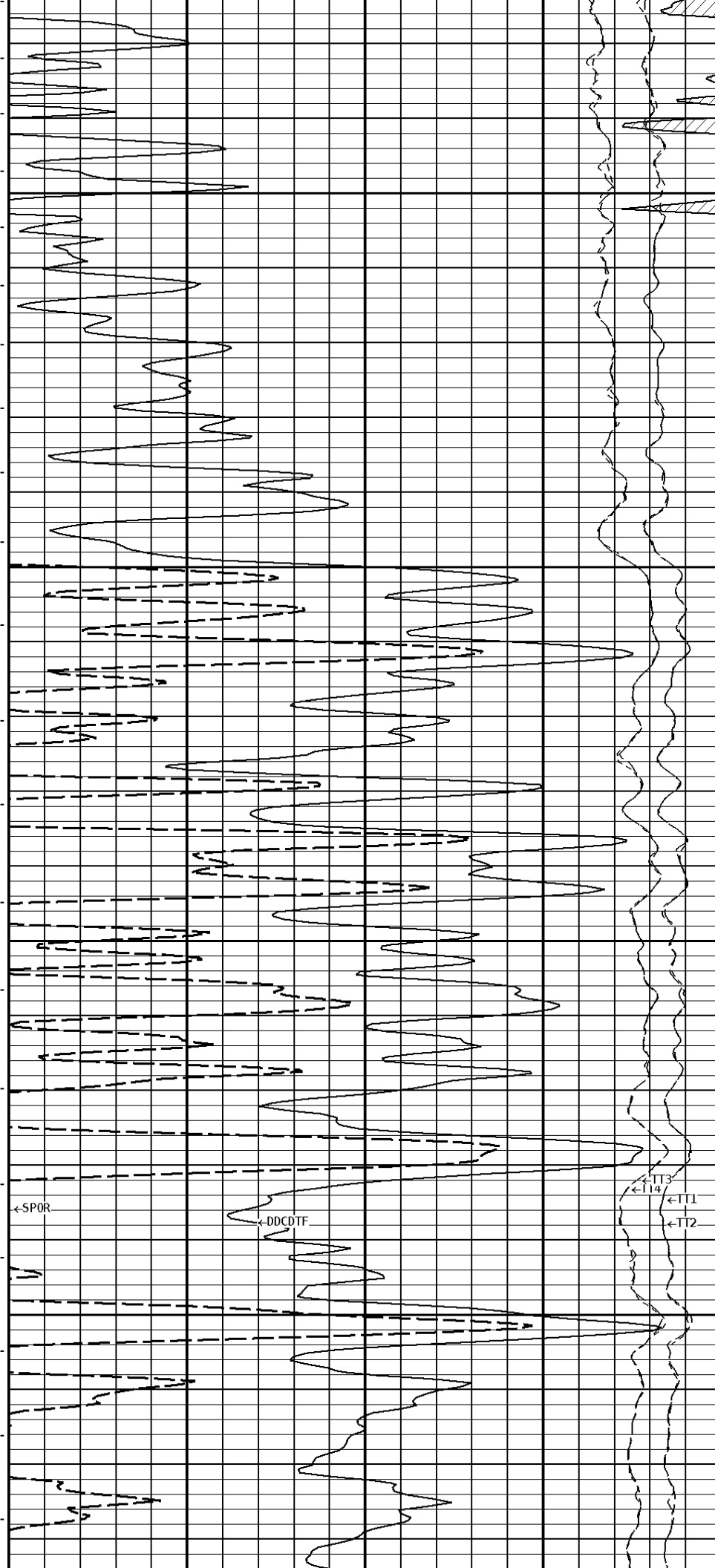
200

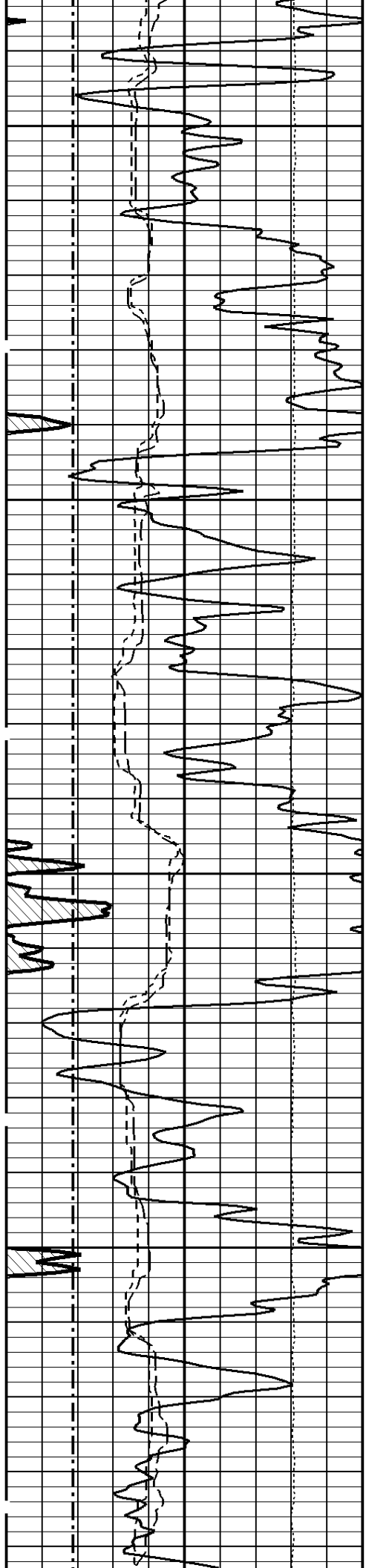




300

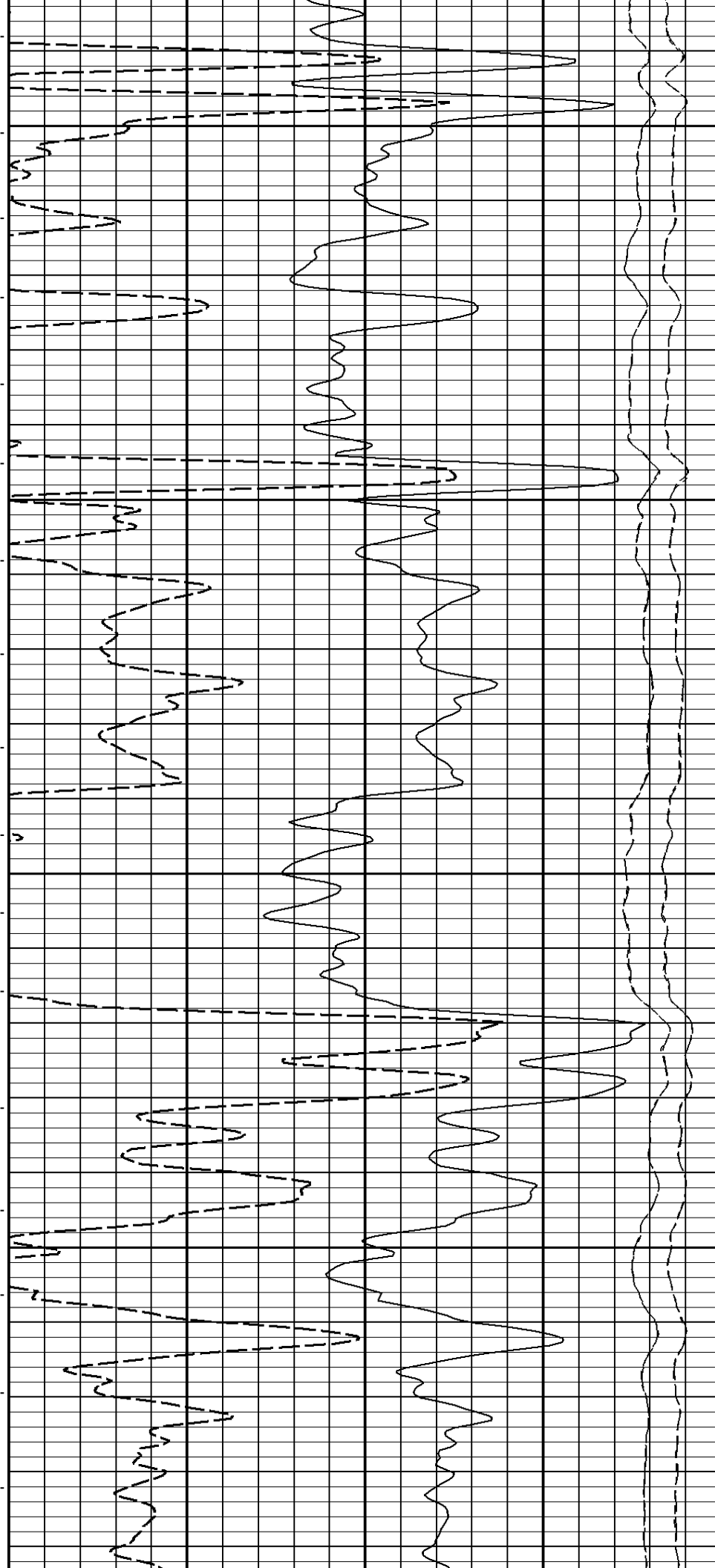
400

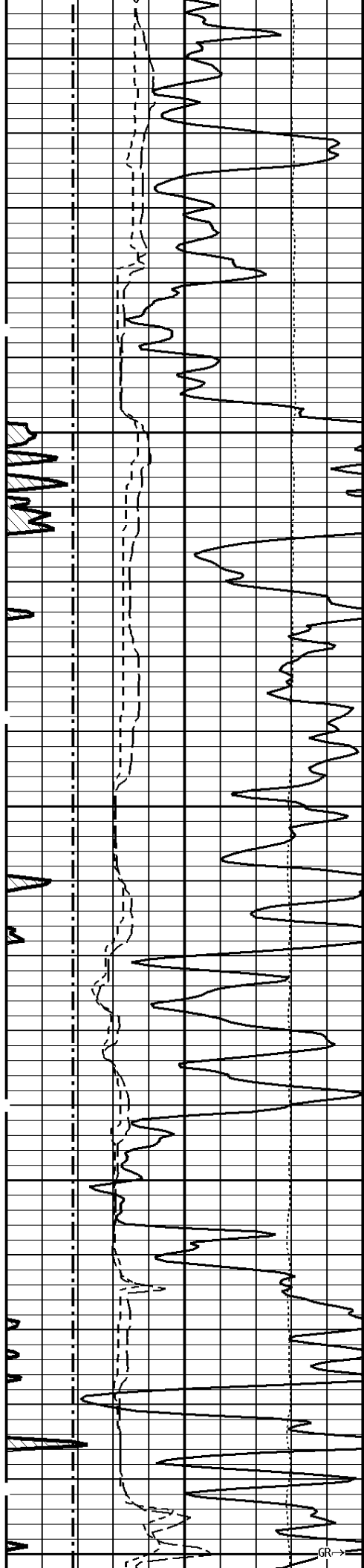




500

600



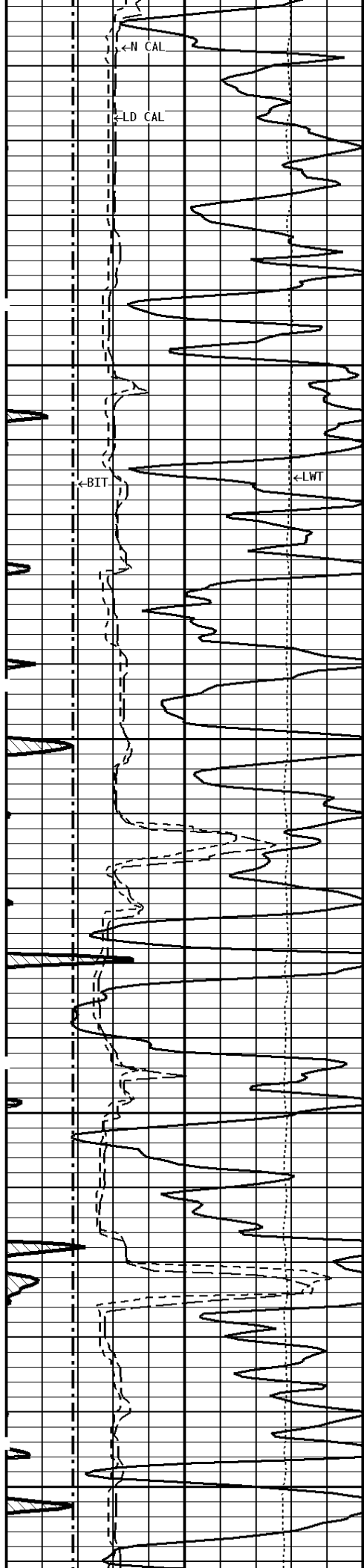


700

800

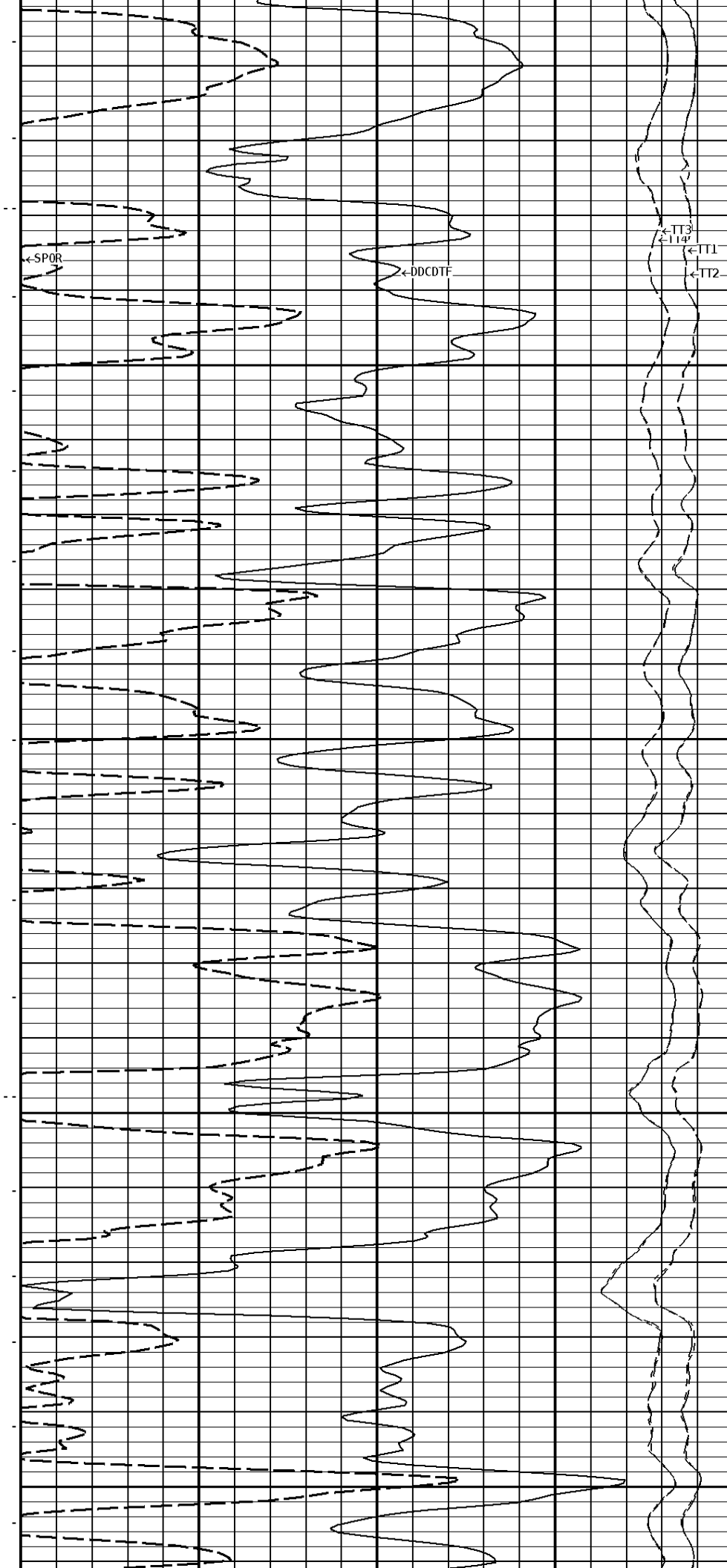
900

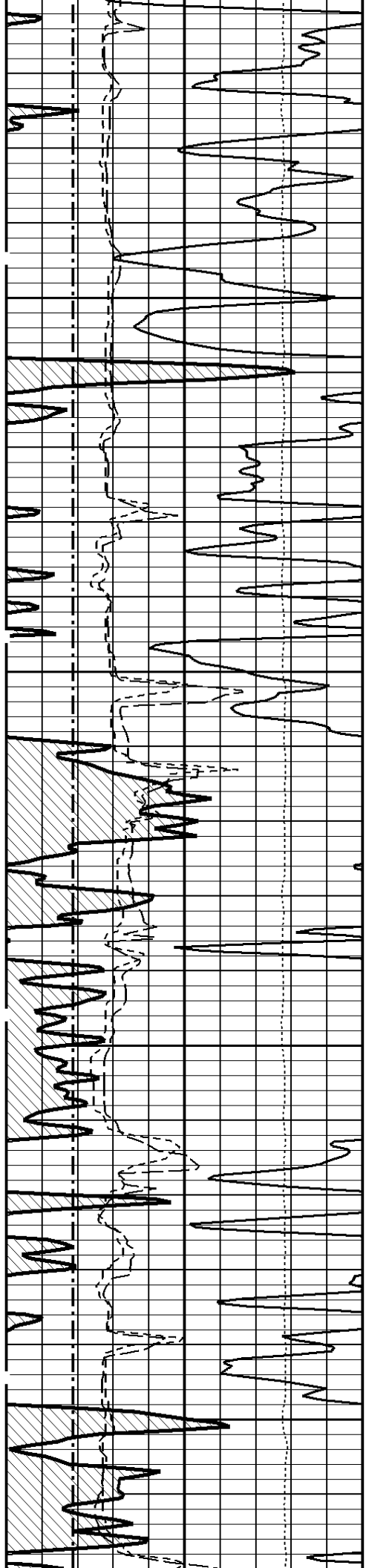




1000

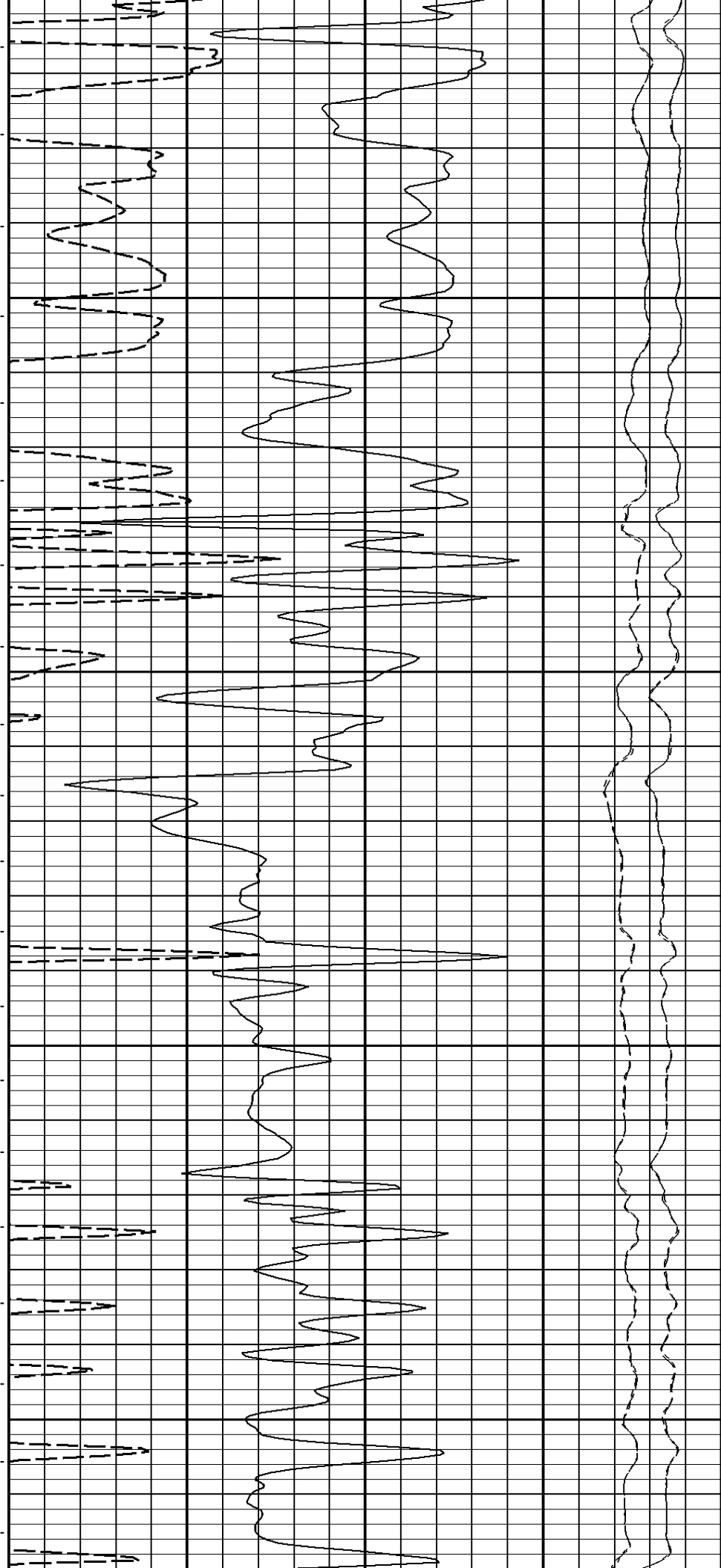
1100

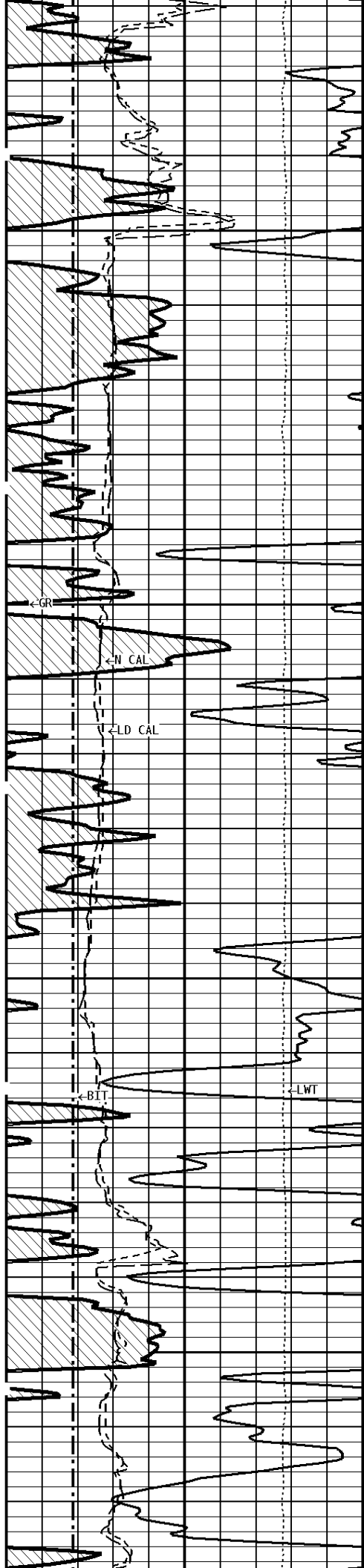




1200

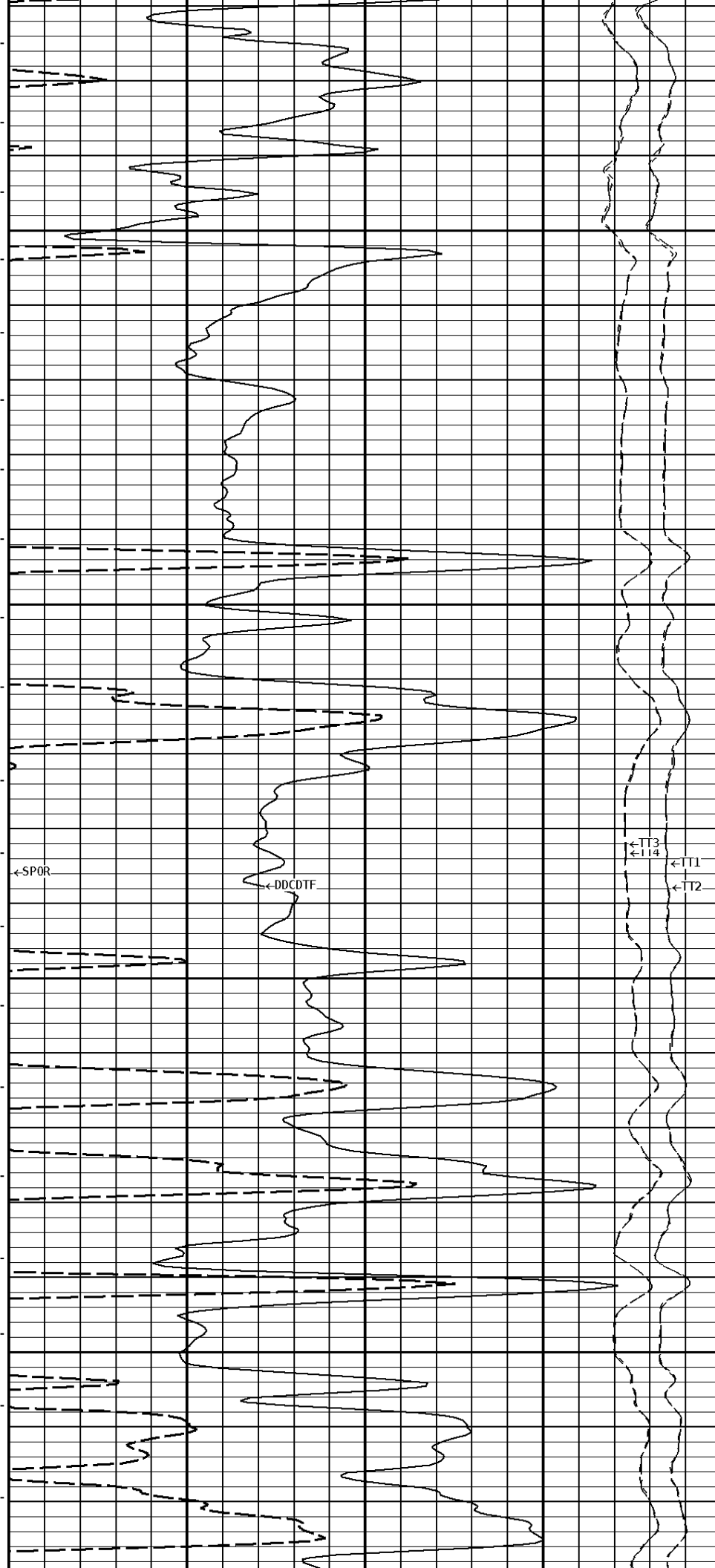
1300

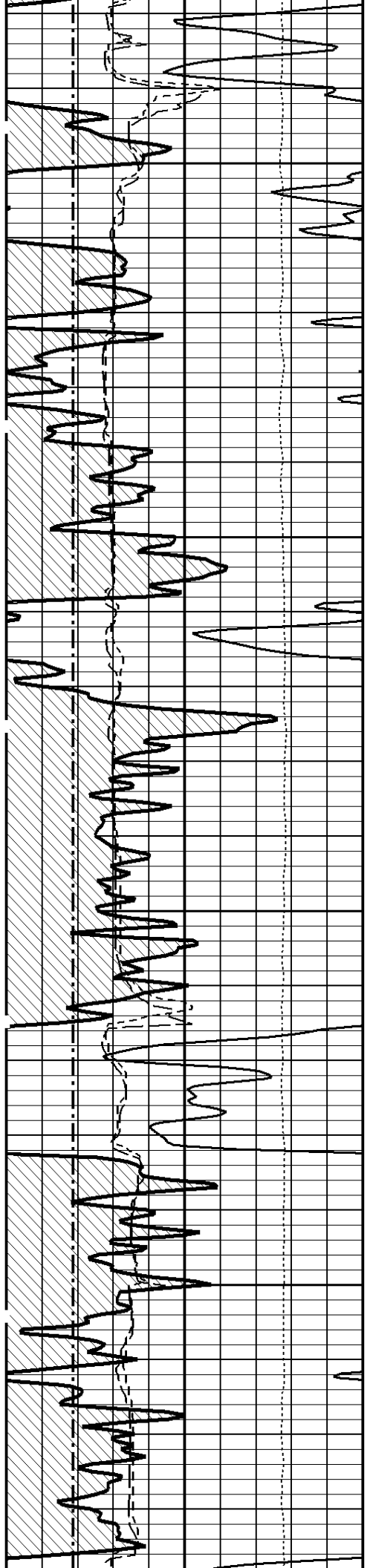




1400

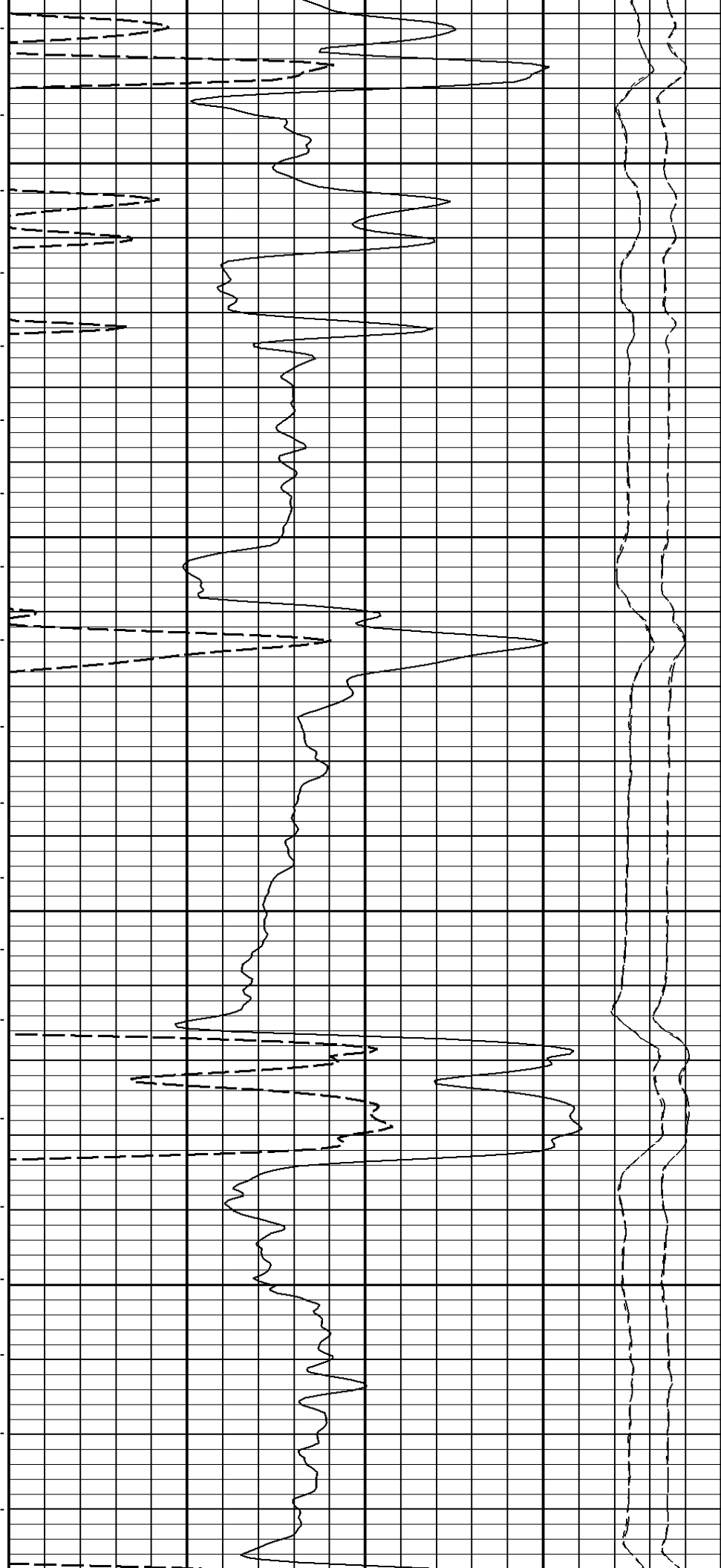
1500

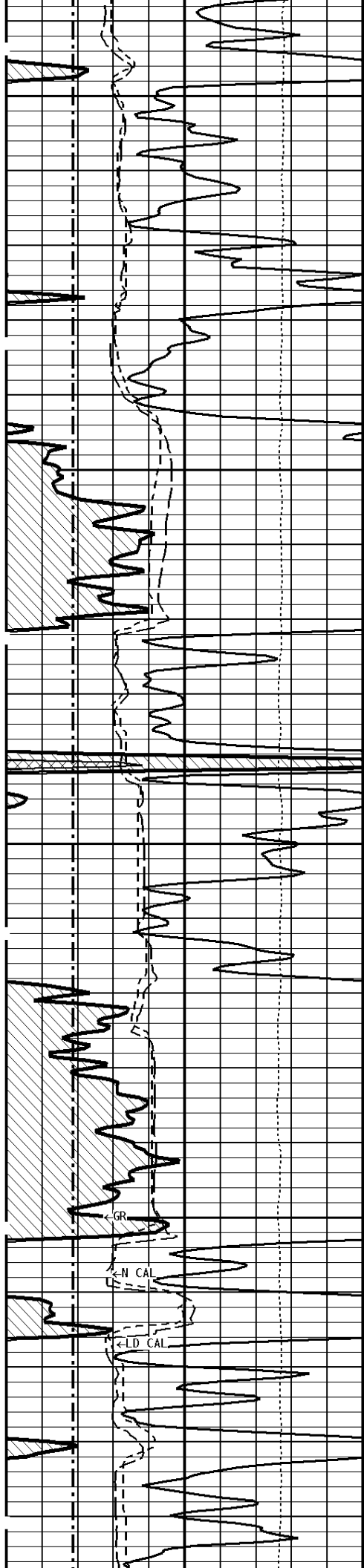




1600

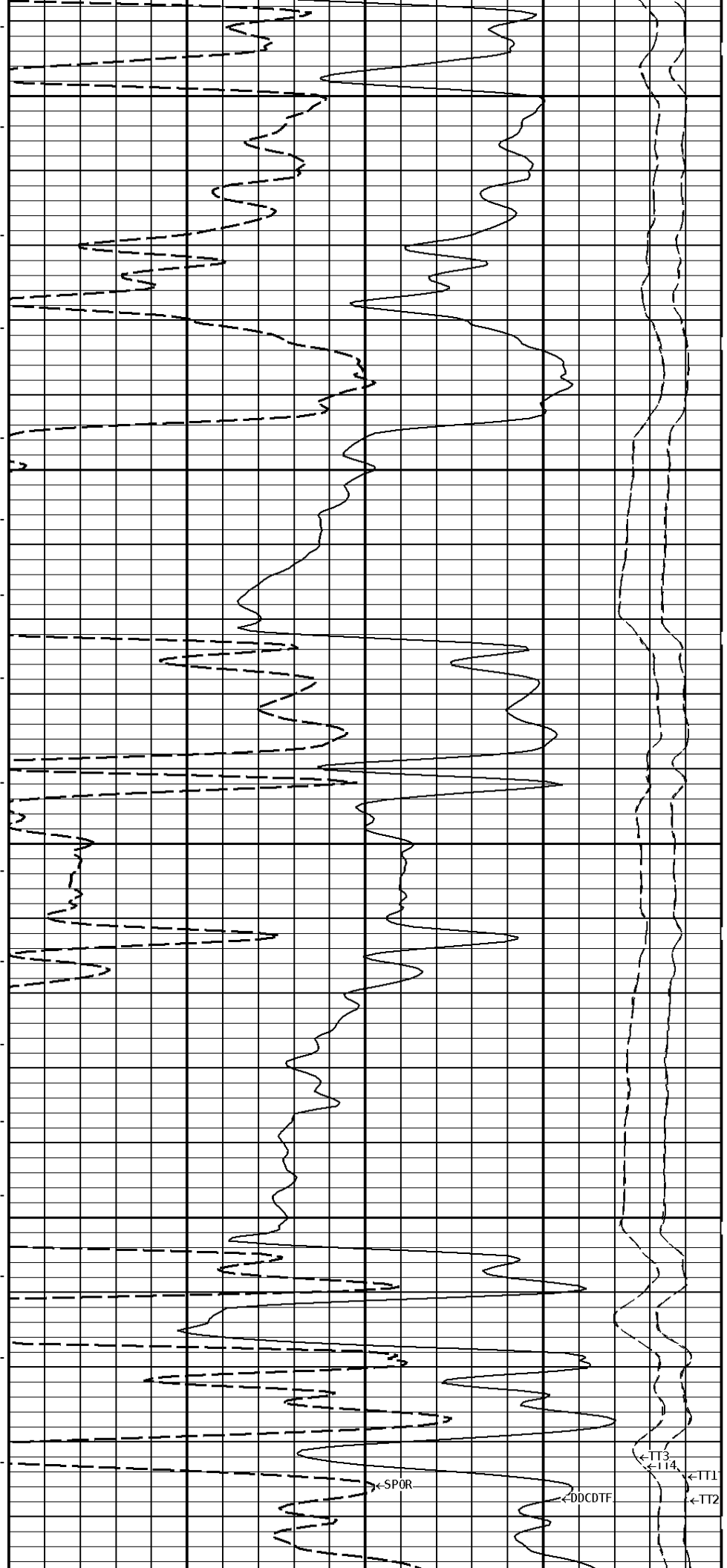
1700

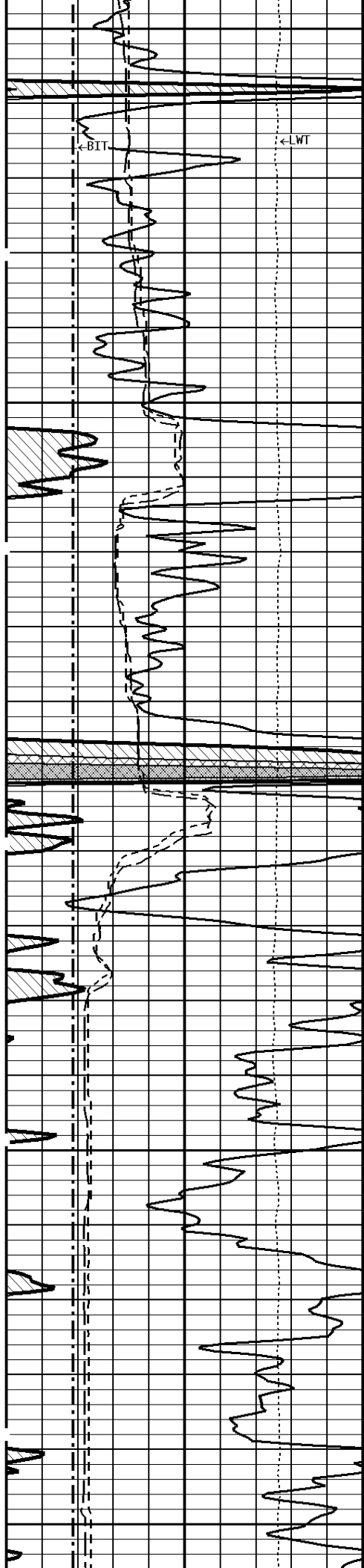




1800

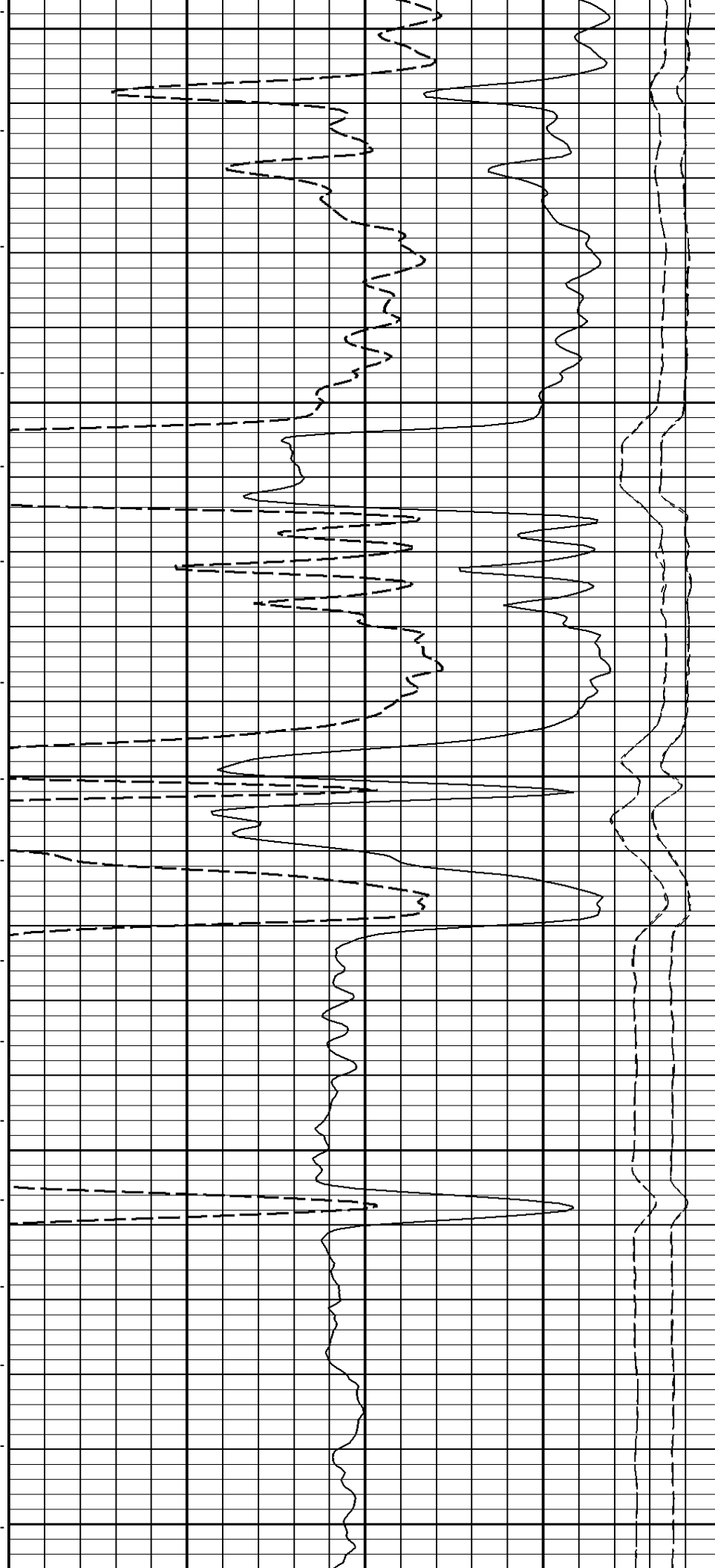
1900

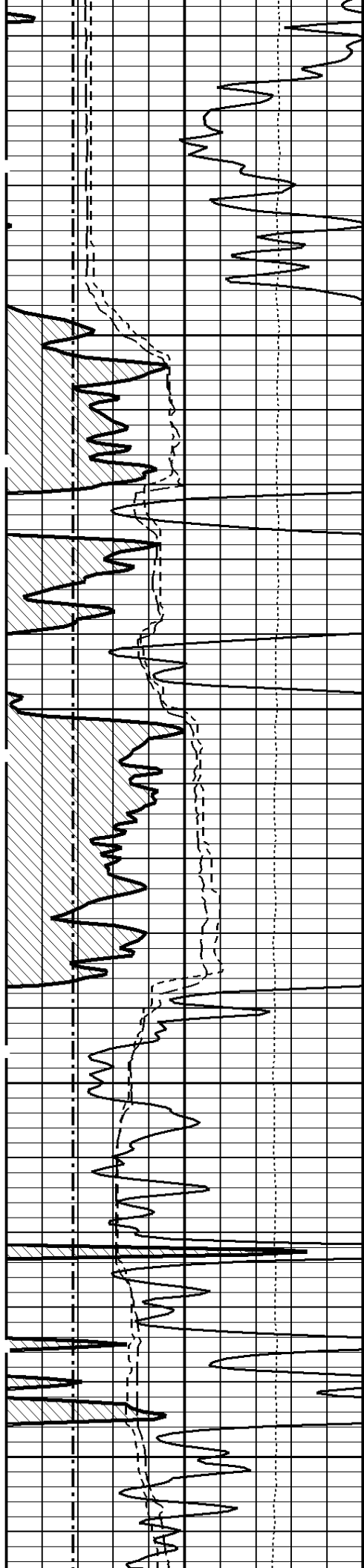




2000

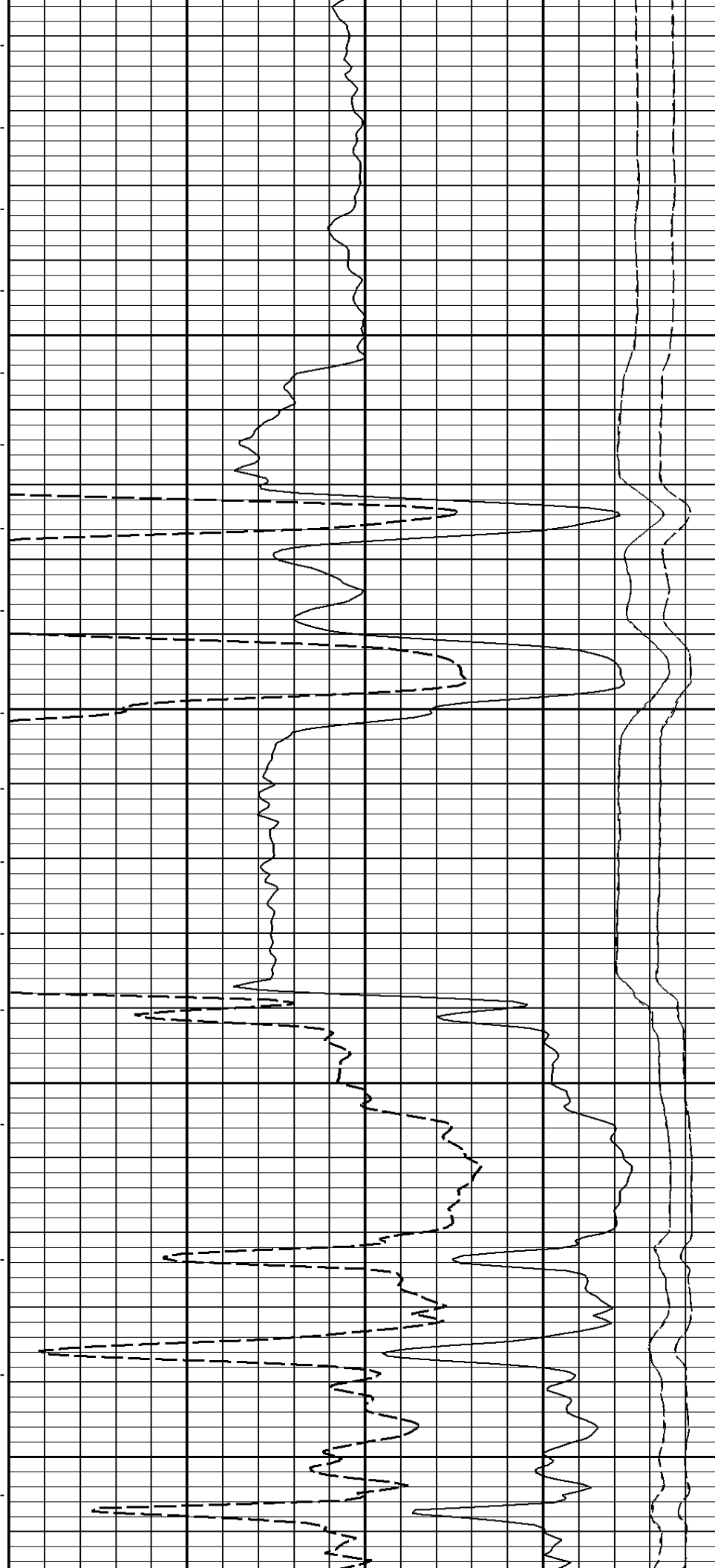
2100

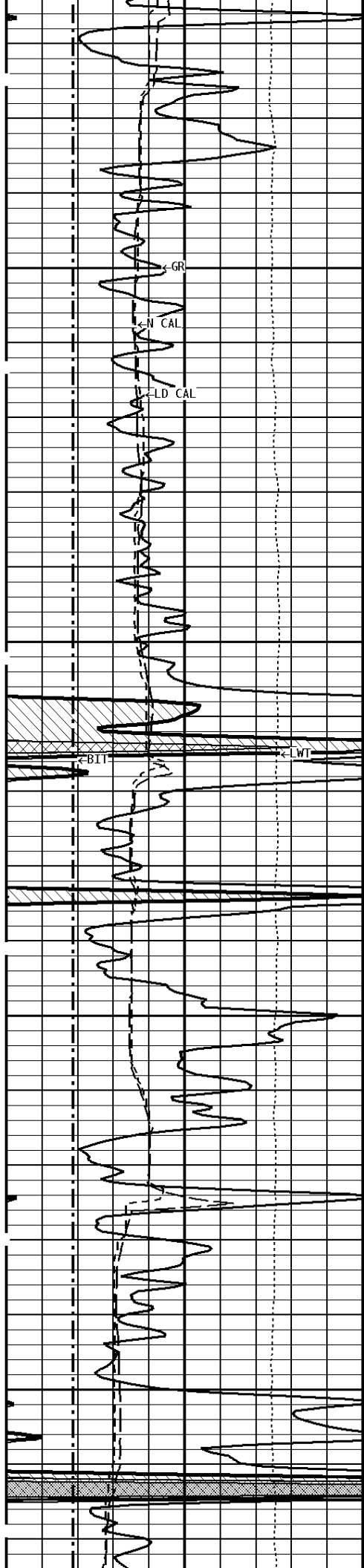




2200

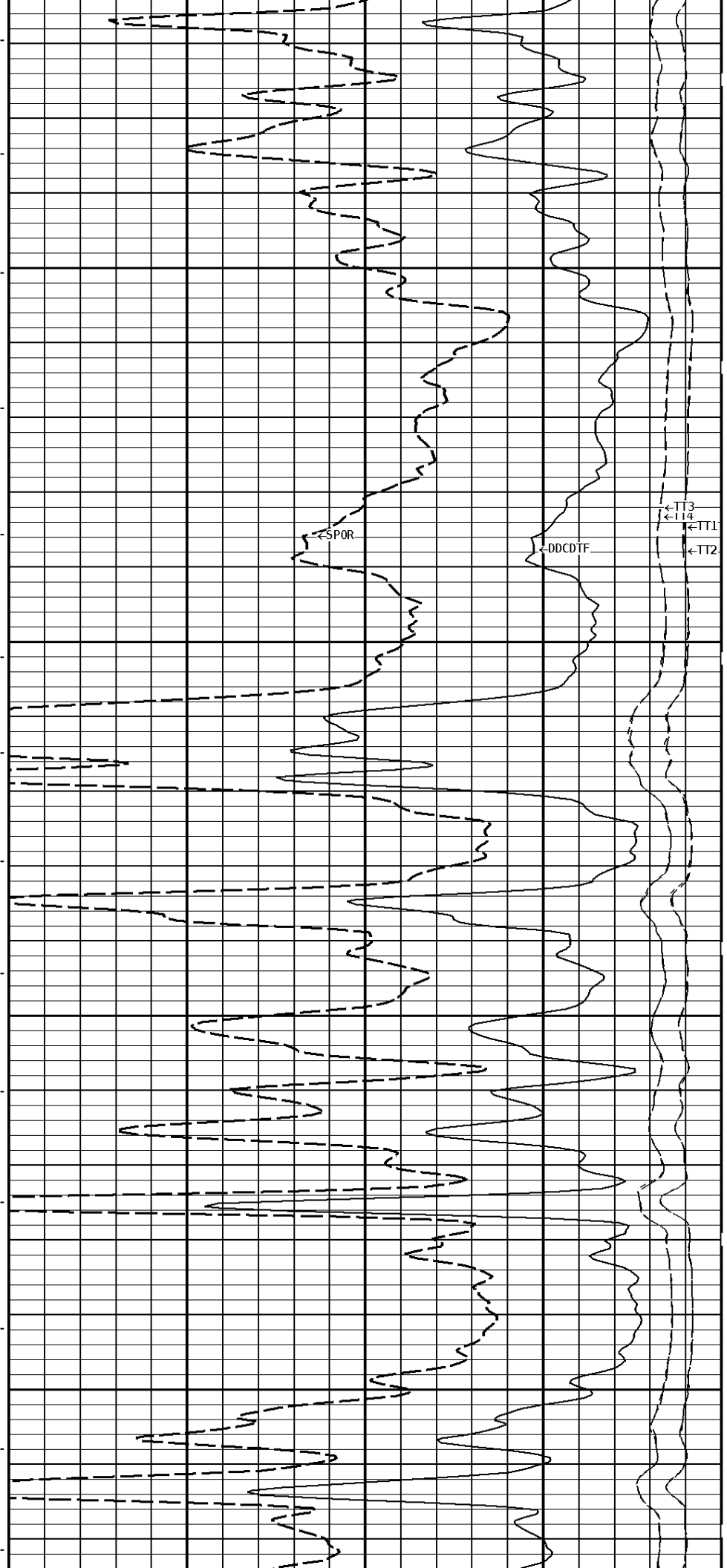
2300

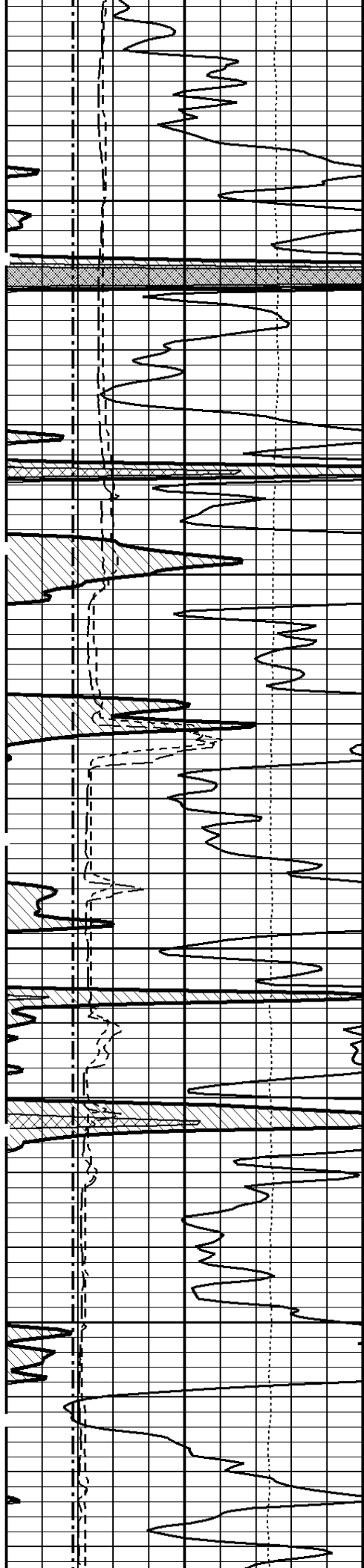




2400

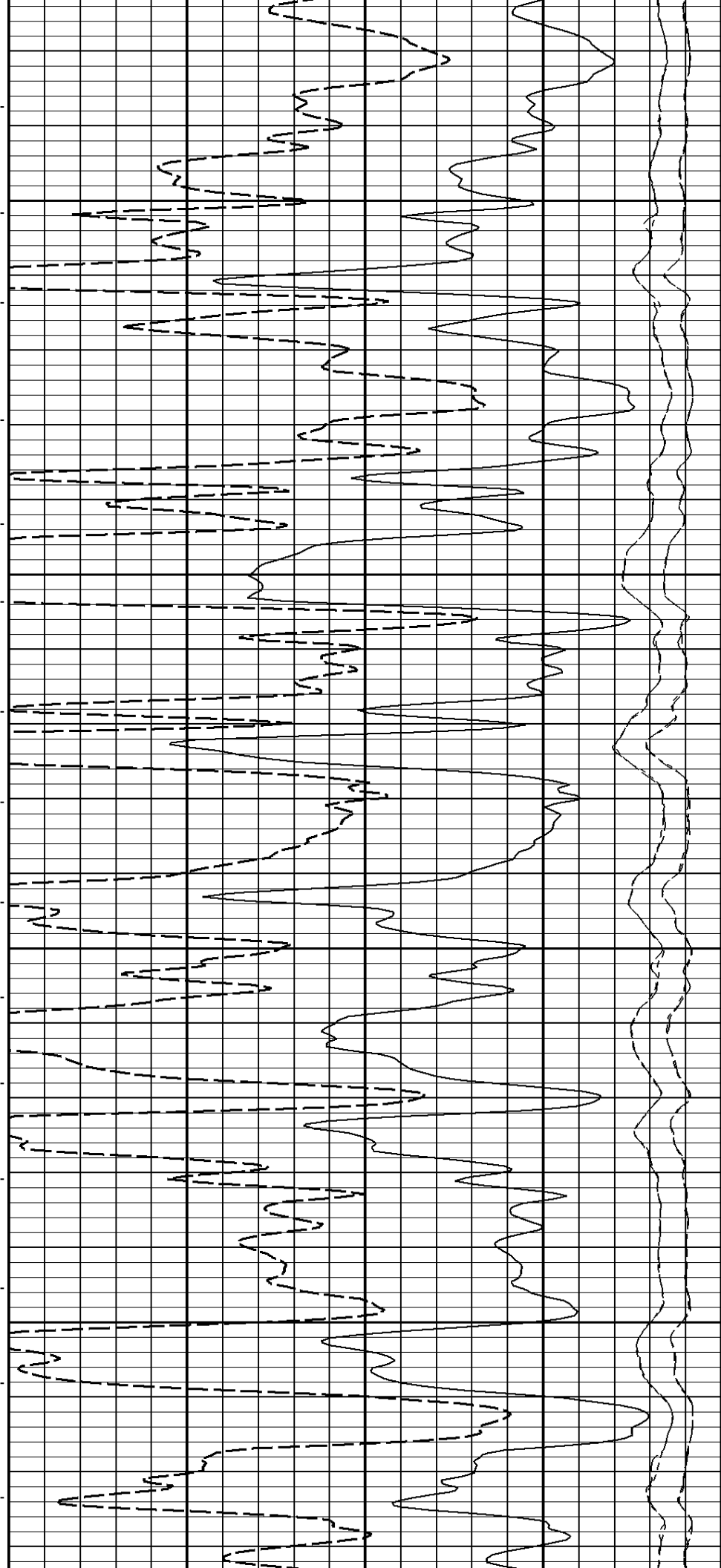
2500

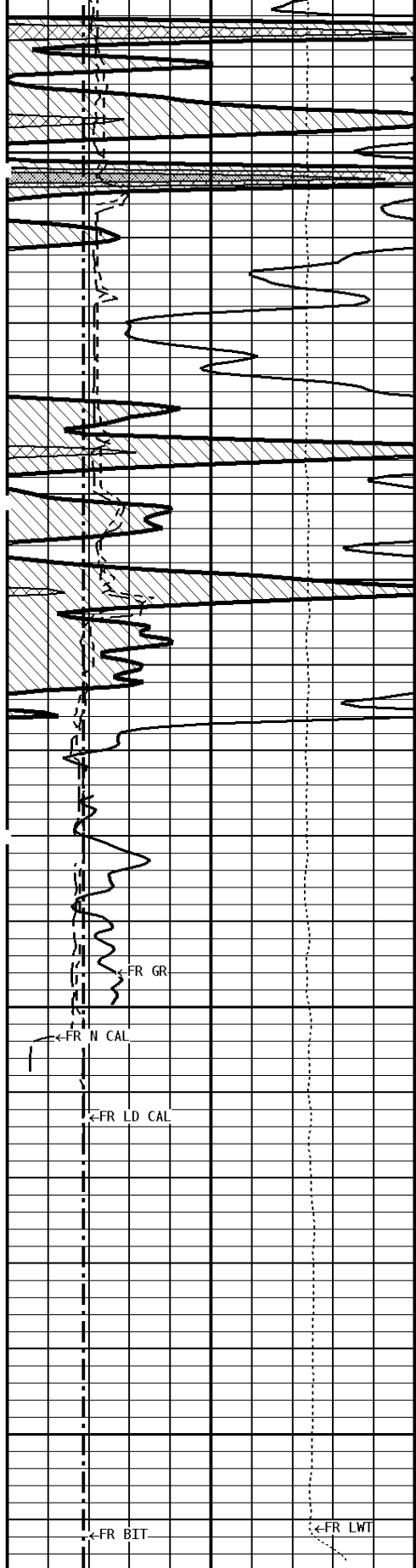




2600

2700

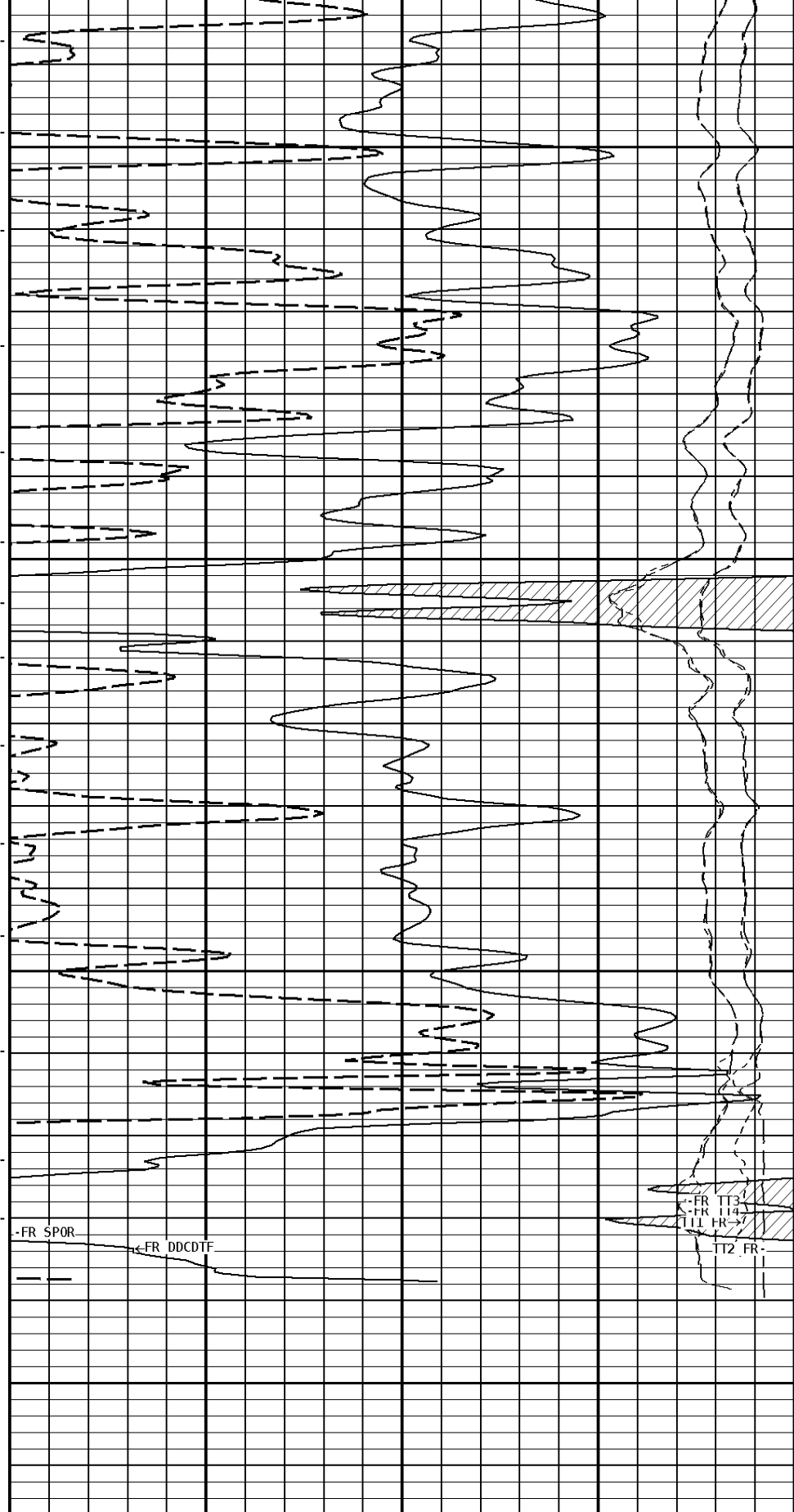




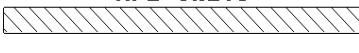
2800


2900

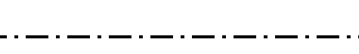
2962




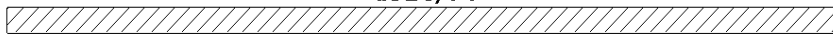
1:240 MAIN SECTION

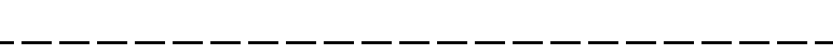
GAMMA RAY API UNITS	
16 6	26 16


DENSITY (X) CALIPER INCHES (IN)	
16 6	26 16


BIT SIZE INCHES (IN)	
6	16


TENSION LBS	
10000	0

COMPENSATED SONIC TRAVEL TIME uSEC/FT	
30	-10


SONIC POROSITY Percent	
950	50

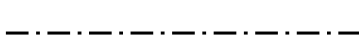
TT2 uSEC	
950	50

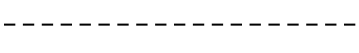
TT3 uSEC	
950	50

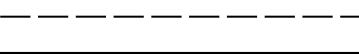
TT4 uSEC	
950	50

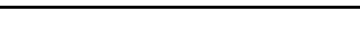
Well File: 123 AMER ADE 1-6 MAY 20 QUINT Segment: V1.D3.S3 RPT Reference: 0	Scale: 1:240 Acquired: 2011-05/20 03:09 3.2.0-9901 Processed: 2011-05/20 03:09 3.2.0-9901
--	--


TENSION LBS	
10000	0


BIT SIZE INCHES (IN)	
6	16

DENSITY (X) CALIPER INCHES (IN)	
16 6	26 16

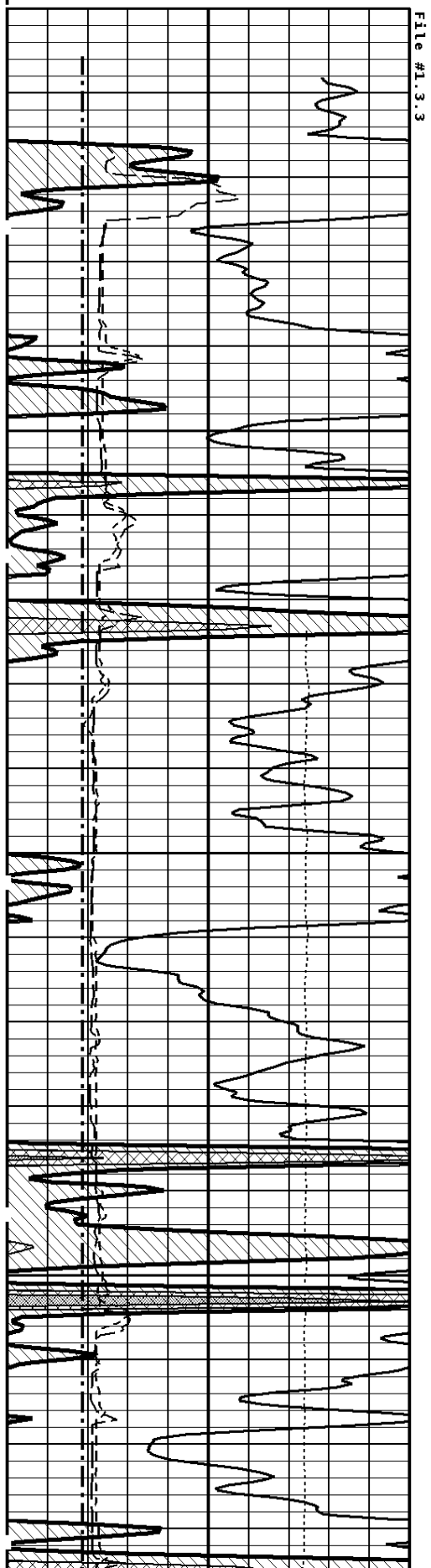
NEUTRON (Y) CALIPER INCHES (IN)	
16 6	26 16

GAMMA RAY API UNITS	
150 0	300 150

COMPENSATED SONIC TRAVEL TIME uSEC/FT	
30	-10

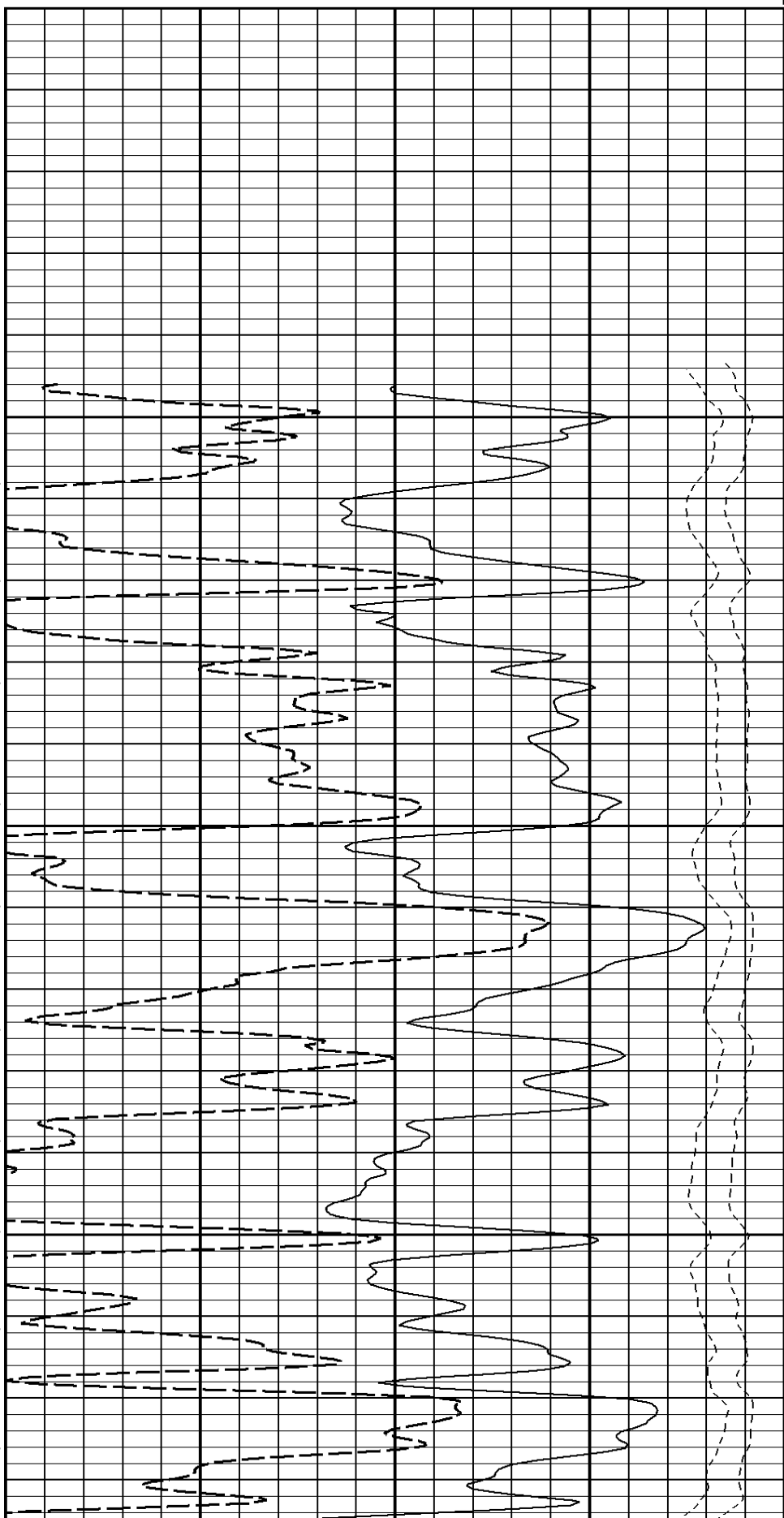
SONIC POROSITY Percent	

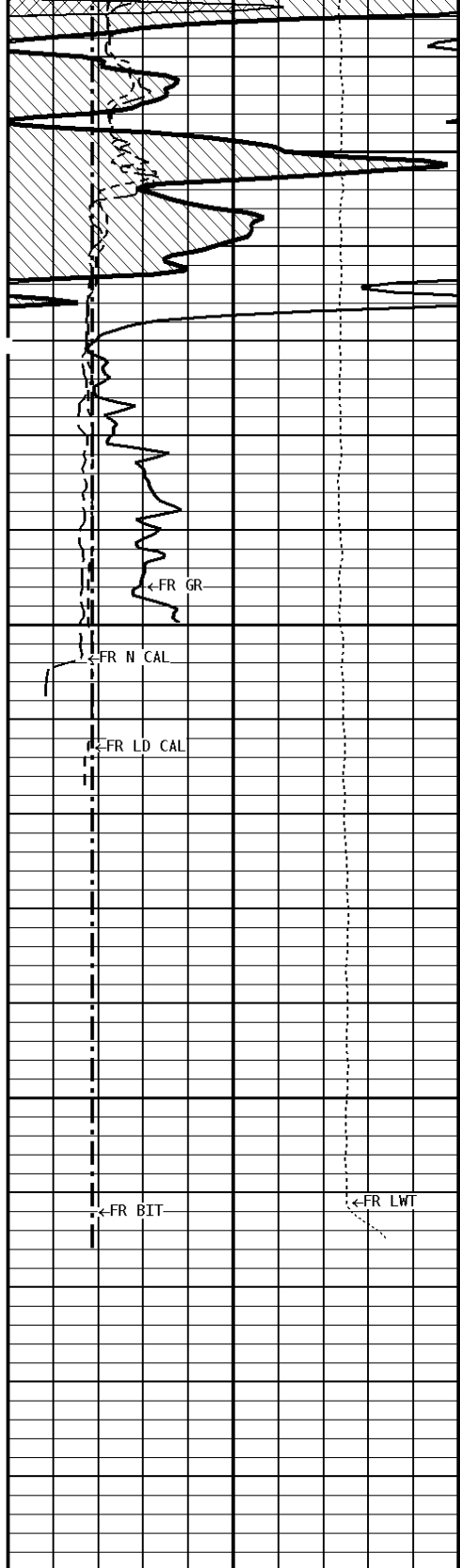
1:240 REPEAT SECTION



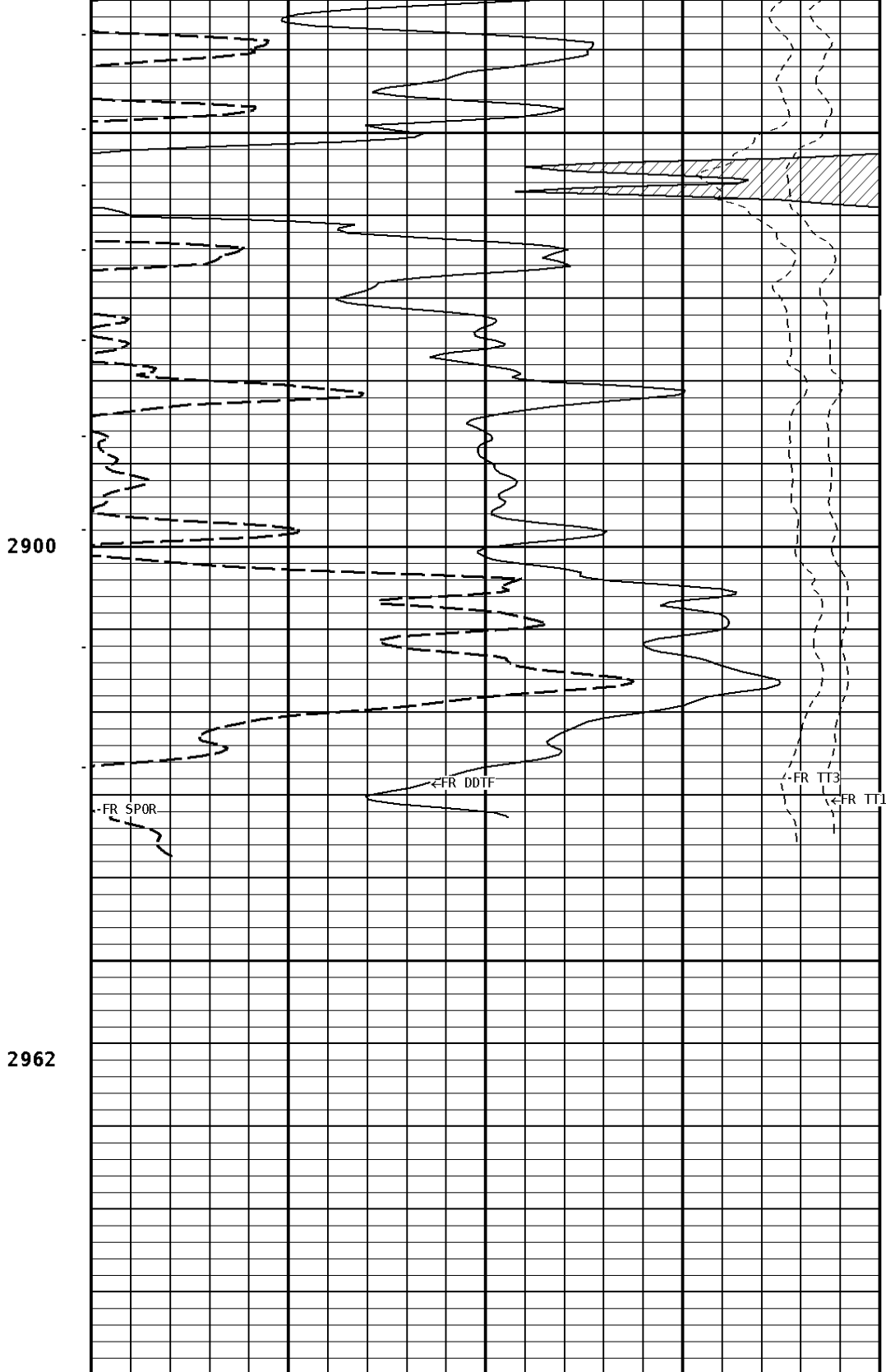
2700

2800

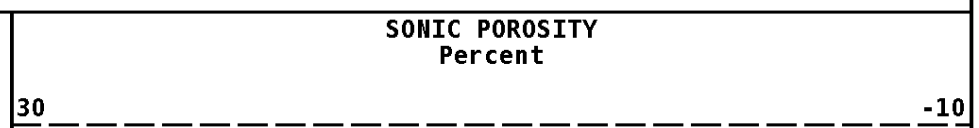
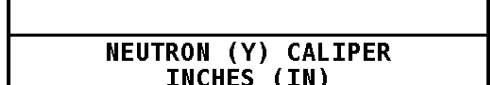
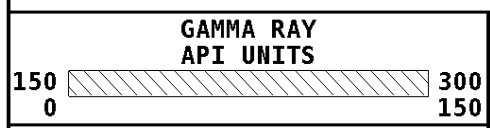




FILE #1.3.3



1:240 REPEAT SECTION



INCHES (IN)	
16 6	26 16
DENSITY (X) CALIPER INCHES (IN)	
16 6	26 16
BIT SIZE INCHES (IN)	
6	16
TENSION LBS	
10000	0

uSEC/FT	
240 140	140 40
TT1 uSEC	
950	50
TT3 uSEC	
950	50

*** Calibration Summary ***

Shop Calibration				
CNT-AA				
Performed : 26-Apr-2011		Time : 10:33		
Sensor Suite : BHC NEUT		ID : CNP-AE-42		
Source ID : N-1046				
	Tank		Verification	Units
	Measured	Calibrated	Jig	
N/F	3.6456	3.6893	3.6949	
Porosity	19.8	20.5	20.6	%
Shop Calibration				
LDT-DA				
Performed : 18-MAY-2011		Time : 17:34		
Sensor Suite : CALI-LTH		ID : PDT-GA-472		
	Jig - Measured		Jig - Calibrated	Units
	Ring#1	Ring#2	Ring#1 Ring#2	
CL # 1	5.9	9.6	6.0 12.0	IN.
Shop Calibration				
CST-AD				
Performed : 13-MAY-2010		Time : 12:13		
Sensor Suite : SON-ANA		ID : CST-AD-38		
	Transit Time		Calibrated	Units
T/R Pair	Measured			
T1R1	208.5		208.5	uS
T2R2	208.5		208.5	uS
T1R2	322.5		322.5	uS
T2R1	322.5		322.5	uS
	Amplitude		Calibrated	Units
T/R Pair	Measured			
T1R1	90.00		90.00	mV
T2R2	90.00		90.00	mV
T1R2	78.00		78.00	mV
T2R1	78.00		78.00	mV