



American Energies  
Corporation

*Perf the Swope 2555  
to 2563 before plugging*

Scale 1:240 (5"=100') Imperial  
Measured Depth Log

Well Name: #1-6 ADE  
Location: Section 6-T19S-R1E  
License Number: 15-115-21422  
Spud Date: May 16, 2011  
Surface Coordinates: SE-NW-SE/4

Region: Marion County, Kansas  
Drilling Completed: May 23, 2011

**Bottom Hole Coordinates:**

Ground Elevation (ft): 1551                      K.B. Elevation (ft): 1560  
Logged Interval (ft): surface      To: T.D.                      Total Depth (ft): 2958  
Formation:  
Type of Drilling Fluid:

Printed by WellSight Log Viewer from WellSight Systems 1-800-447-1534 [www.WellSight.com](http://www.WellSight.com)

**GEOLOGIST**

Name: David A. Barker  
Company:  
Address: 212 N. Market, Suite 320  
Wichita, Kansas 67202  
(316) 259-4294, 2 [Barker@sbcglobal.net](mailto:Barker@sbcglobal.net)

**OPERATOR**

Company: American Energies Corporation  
Address: 155 N. Market, Suite 710,  
Wichita, Kansas 67202

### Daily Status

5/16/11MIRU, will set surface casing today. Spud Set 8 5/8", 23# surface casing set at 210'. Cemented with 105 sx Class A Cement, 3% CC, 2% Gel, 1/4# Floseal. Cementing by Consolidated Cementing, ticket #30532. Cement did circulate. Plug down 6:00 p.m.

5/17/11At 406' and drilling ahead. Drilled out from surface casing at 7:20 a.m. 5/17/11.

5/18/11At 2470' and drilling ahead. Straight hole tests: 501 = 1/4 degree deviation, 1091 = 1/2 degree deviation, 1527 = 1/2 degree deviation, 1995' = 3/4 degree deviation. Mud Wt.: 9.4, Viscosity = 34, LCM = 1#.

5/19/11At 2998' and coming out for DST #1: 2848 - 2897'. Straight hole test: 2808 = 3/4 degree deviation.

5/20/11 DST #1: 2849-2897' Mississippian

Times 30-60-45-90

IF: Strong blow, GTS in 3 min.

1st Open: 13min.: 652mcf

23min.: 603mcf

30min.: 652mcf

2nd Open: 10min.: 817mcf

20min.: 756mcf

30min.: 687mcf

40min.: 652mcf

45min.: 652mcf

Rec 40' OCM & 870' SW

IFP: 364-454#

FFP: 343-498#

BHP: 616-616#

HP: 1377-1363#

Preparing to run production casing.

5/23/11Set production casing on 5/20/11 as follows:

4 1/2" 11.5# production casing set @ 2972'. Cemented with 150 sx Thickset, Class A cement with 8# Cal-Seal, 4% gel, 2% CaCl, 5# per sx Kolseal, Consolidated of Eureka, Ticket #3-582. Cement did circulate.

### DST results

DST #1: 2849-2897' Mississippian

Times 30-60-45-90

IF: Strong blow, GTS in 3 min.

1st Open: 13min.: 652mcf

23min.: 603mcf

30min.: 652mcf

2nd Open: 10min.: 817mcf

20min.: 756mcf

30min.: 687mcf

40min.: 652mcf

45min.: 652mcf

Rec 40' OCM, ( 3% oil and 97 mud) & 870' SW, 49,000 chlorides,

IFP: 364-454#

FFP: 343-498#

BHP: 616-616#

HP: 1377-1363#

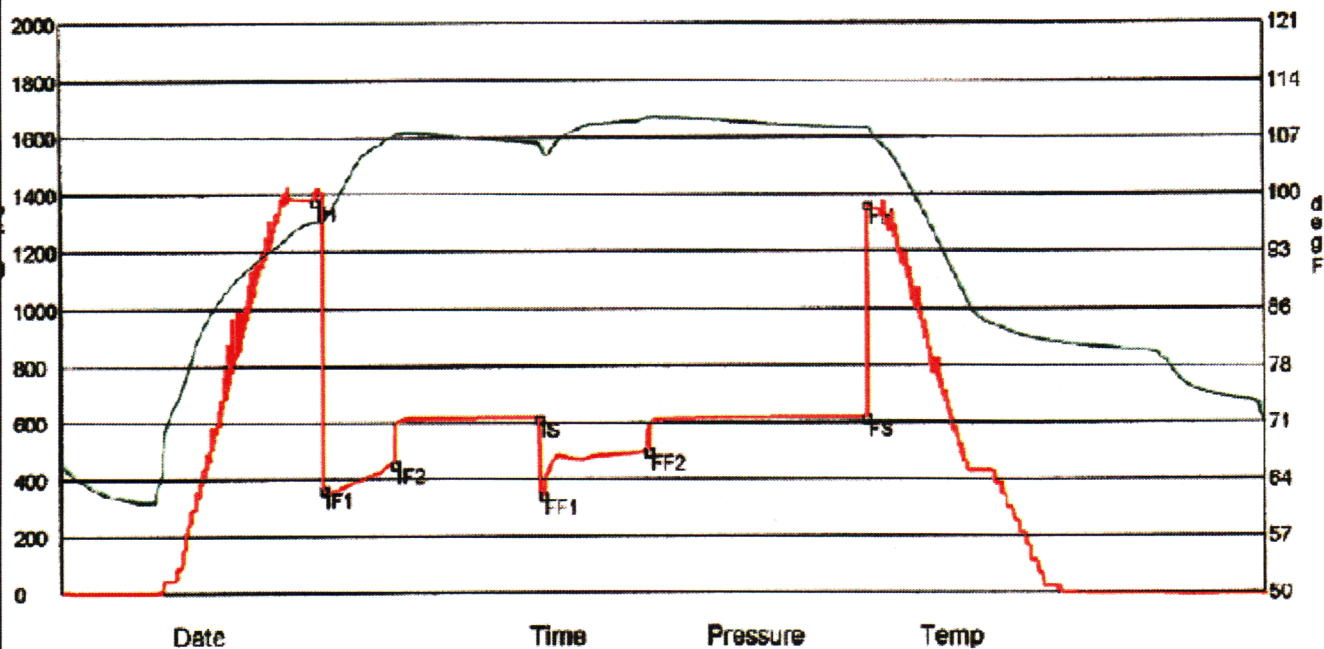
### remarks

After the positive results of DST #1, 4 1/2" production casing was cemented to a depth of 2972 to further test the Mississippian. David A. Barker

### Contractor

C & G Drilling

DST #1: 2849-2897', Mississippian, times 30-60-45-90, IF: strong blow, GTS in 3 min.: 1st open: 13 min.: 652 MCFG, 23 min.: 603 MCFG, 30 min.: 652 MCFG, 2nd Open: 10 min.: 817 MCFG, 20 min.: 756 MCFG, 30 min.: 687 MCFG, 40 min.: 652 MCFG, 45 min.: 652 MCFG, REC. 40' OCM (3% oil, 97% mud) & 870' SW (49,000ppm chlorides), IFP: 364-454#, FFP: 343-498#, BHP: 616-616#, HP: 1377-1363#,



**FOSSIL**  
 [Symbol] Algae  
 [Symbol] Amph  
 [Symbol] Belm  
 [Symbol] Bisclet

[Symbol] Pisolite  
 [Symbol] Plant  
 [Symbol] Strom  
 [Symbol] Fuss  
 [Symbol] Gemold

**ACCESSORIES**  
 [Symbol] Ferrpel  
 [Symbol] Ferr  
 [Symbol] Glau  
 [Symbol] Gyp  
 [Symbol] Hymin

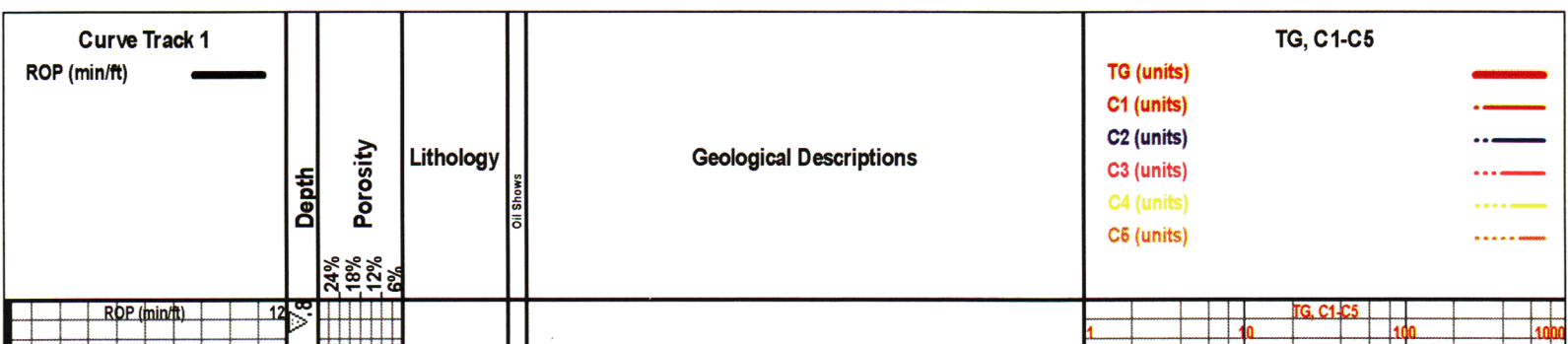
[Symbol] Sand  
 [Symbol] Sity  
**STRINGER**  
 [Symbol] Anbu

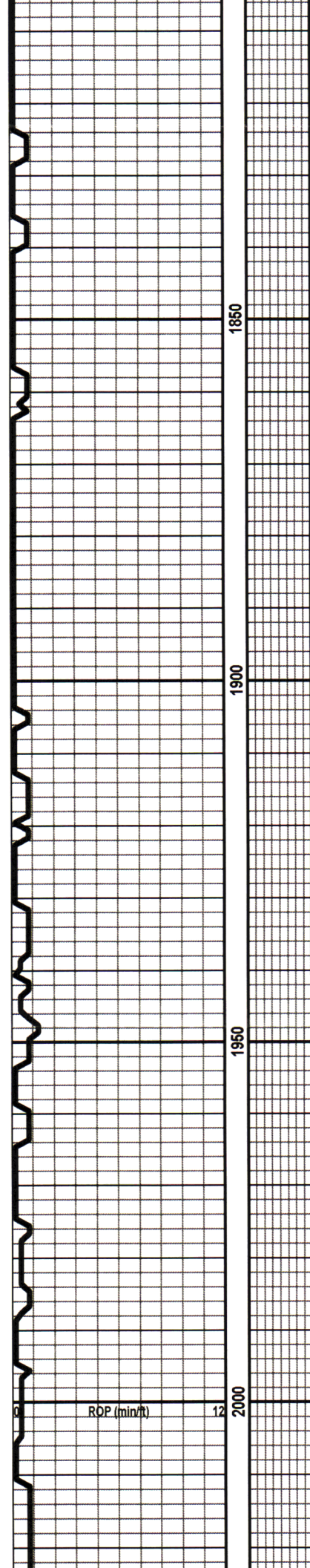
[Symbol] Lms  
 [Symbol] Sandylms  
 [Symbol] Sh  
 [Symbol] Sltstn

Biocist	Combol	Kaol	Hvymil	Arg	Anhy	<b>TEXTURE</b> BS Boundst
Brach	<b>MINERAL</b>	Marl	Minxl	Bent	Coal	C Chalky
Bryozoa	Anhy	Nodule	Phos	Dol	Gyp	CX Cryxln
Cephal	Arg	Pyr	Salt	Ls	Mrst	E Earthy
Coral	Bent	Sandy	Silt	Sltstrg	Ssstrg	FX Finexln
Crin	Bit	Sil	Sulphur	Carbsh	Clystn	GS Grainst
Echin	Brecfrag	Tuff	Chlorite	Dol	Grysh	L Lithogr
Fish	Calc	Dol	Dol	Gryslt	MX Microxln	MS Mudst
Foram	Carb	Dol			PS Packst	WS Wackest
Fossil	Chtdk					
Gastro	Chtlt					
Oolite	Dol					
Ostra	Feldspar					
Pelec						
Pellet						

<b>INTERVALS</b>		<b>OTHER SYMBOLS</b>		<b>ROUNDING</b>	
Core	Fracture	Carb sh	brown dolomite	Rounded	
Dst	Inter	Gry sh	brown cream	Subrnd	
Dst	Moldic	Sandylms	Lmst light cream	Subang	
	Organic	Shale	lms gray cream	Angular	
	Pinpoint	Sltstn	green dolomite		
	Vuggy	Shlyslts	gray dolomite		
<b>EVENTS</b>		Sitysh	Blank	<b>OIL SHOWS</b>	
Rft	<b>LITHOLOGY</b>	Lms		Even	
Sidewall	Cht	Lmst cream	<b>SORTING</b>	Spotted	
Conn	Congl	Shale red	Well	Ques	
	Shale	blue green siltstn	Moderate	Dead	
<b>POROSITY TYPE</b>	Shgy	green shale	Poor	Gas show	
Earthy	Ss	Lmst brown			
Fenest					

<b>ROCK TYPES</b>					
Cht	Carb sh	Shlyslts	blue green shale	Lmst light cream	
Congl	Gry sh	Sitysh	green shale	lms gray cream	
Shale	Sandylms	Lms	Lmst brown	green dolomite	
Shgy	Shale	Lmst cream	brown dolomite	gray dolomite	
Ss	Sltstn	Shale red	brown cream	Blank	





1850

1900

1950

2000

ROP (min/ft) 12

LS: cream, finexyln, fossiliferous, friable,  
Shale: gray

Shale: gray to gray/green, LS: cream,  
finexyln, friable

LS: cream, finexyln, friable.

1 10 100 1000  
TG, C1-C5

Heebner  
Shale @  
2040-480

2050

2100

2150

2200

RDP (min/ft)

12

Shale; gray, LS: buff, microxyln, very dense

LS: gray, microxyln, very dense, Shale: green to gray, Chert: gray, modeled

Shale: black, LS: cream/buff, finexyln, poor interxyln, porosity, Shale: green, LS: gray, microxyln, very dense.

Shale: gray, black and green soft, LS: brown, microxyln, very dense

Shale: green, soft, mushy, Shale: red, gray to yellow

SD. STN: gray/white, finegrain, no show, Shale: gray to green

Shale: gray to green, LS: buff, microxyln, dense, no visable porosity

Shale: gray with green & gray, argilaceous, lmy in part. LS: light brown, microxyn, very dense, no visable porosity,

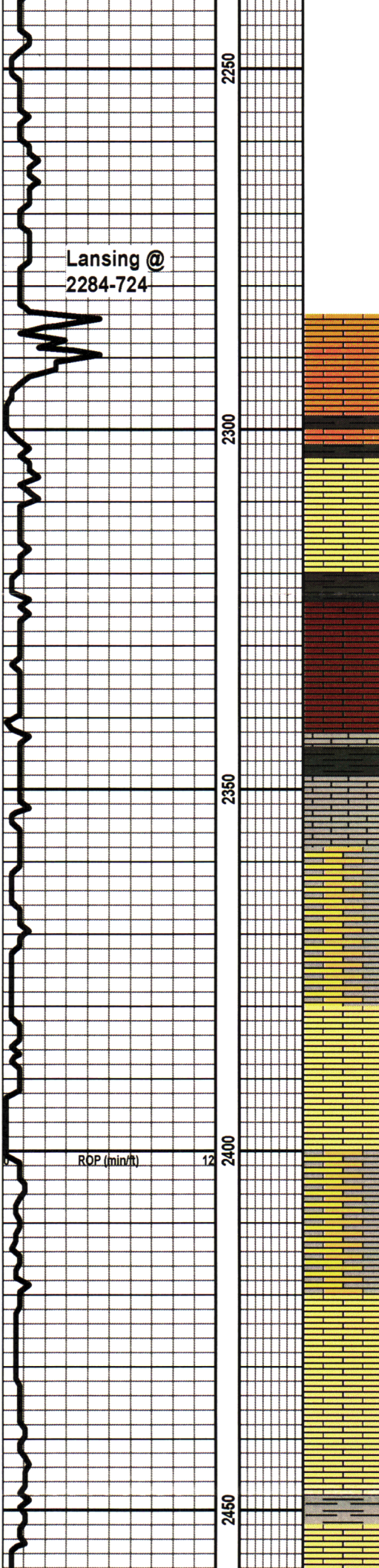
IG, C1-C5

1

10

100

1000



Lansing @  
2284-724

2250  
2300  
2350  
2400  
2450

LS: cream to buff, microxyn, very dense,  
Shale: green sample mostly shale

Shale: gray red and green. LS: cream to buff,  
microxyn poor interxyn porosity

Shale: gray massive

LS: cream, finexyn, friable, sample mostly  
gray shale

LS: brown, very dense, blocky, sample  
mostly gray shale.

LS: gray, finexyn, poor interxyn porosity,  
fossiliferous

LS: gray to cream, finexyn, poor interxyn  
porosity to chaulky, shale: gray

Shale: green, LS: cream, microxyn, no  
visable porosity, poor interxyn porosity

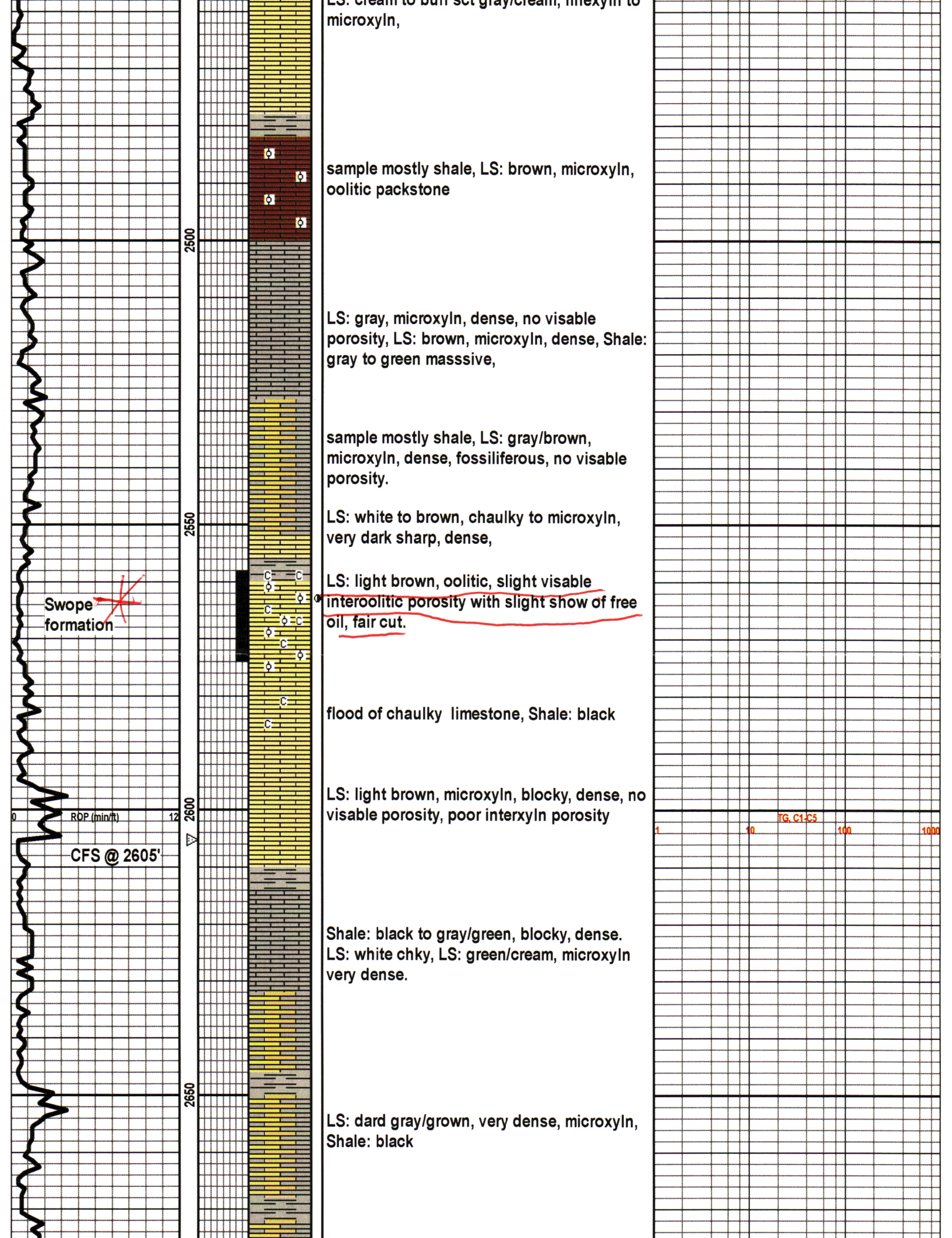
RDP (min/ft) 12

LS: cream to gray, microxyn, Shale: gray

LS: cream to buff, microxyn, dense, Shale:  
gray

LS: cream to buff set gray/cream finexyn to

TG, C1-C5  
1 10 100 1000



LS: cream to buff set gray/cream, microxyn, to microxyn,

sample mostly shale, LS: brown, microxyn, oolitic packstone

LS: gray, microxyn, dense, no visible porosity, LS: brown, microxyn, dense, Shale: gray to green massive,

sample mostly shale, LS: gray/brown, microxyn, dense, fossiliferous, no visible porosity.

LS: white to brown, chaulky to microxyn, very dark sharp, dense,

LS: light brown, oolitic, slight visible interoolitic porosity with slight show of free oil, fair cut.

flood of chaulky limestone, Shale: black

LS: light brown, microxyn, blocky, dense, no visible porosity, poor interxyn porosity

Shale: black to gray/green, blocky, dense. LS: white chky, LS: green/cream, microxyn very dense.

LS: dard gray/grown, very dense, microxyn, Shale: black

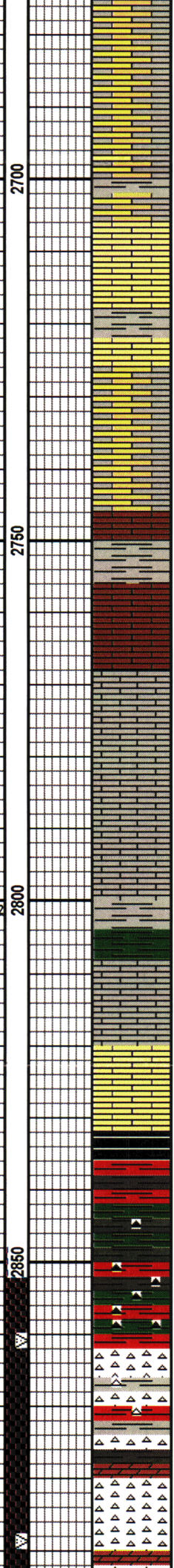
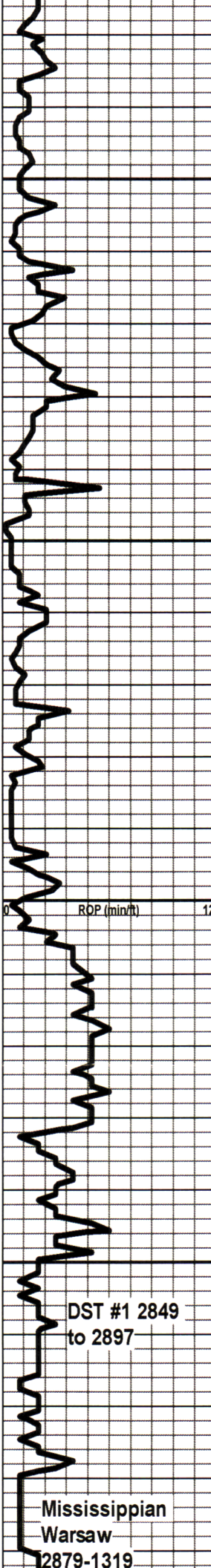
~~Swope formation~~

ROP (min)

CFS @ 2605'

TG. C1-C5

1 10 100 1000



LS: gray/brown, microxyln, very dense, mudstone  
Shale: gray

LS: tan, microxyln, very dense, blocky, waxy in part, mostly  
Shale: gray

LS: gray/brown, waxy with  
Shale: gray

LS: brown, microxyln, very dense, no visable porosity, LS: cream, finexyln, friable in part, Shale: gray, massive

LS: gray, microxyln, dense, LS: tan, microxyln, very dense.

LS: gray to dark gray, blocky, very dense, Shale: gray

Shale: green to gray, LS: gray, microxyln, very dense

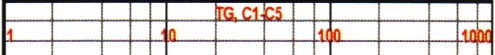
LS: cream to cream/brown, microxyln, very dense, LS: buff, microxyln, very dense.

Shale: varied colored

Shale: varied colored and small amount of varied colored Chert

no odor, varied colored, chert: white, sharp, no fluorescence, and yellow chert

no odor, Chert: white, fresh, sct fair tripolitic, fair visable porosity, no show, dull fluorescence, Dolomite: brown, fine granular, poor interxyln porosity, rainbow show when



DST #1 2849 to 2897

Mississippian Warsaw 2879-1319

DST #1: 2849-2897' Mississippian Times 30-60-45-90

IF: Strong blow, GTS in 3 min.

1st Open: 13min.: 652mcf

23min.: 603mcf

30min.: 652mcf

2nd Open: 10min.: 817mcf

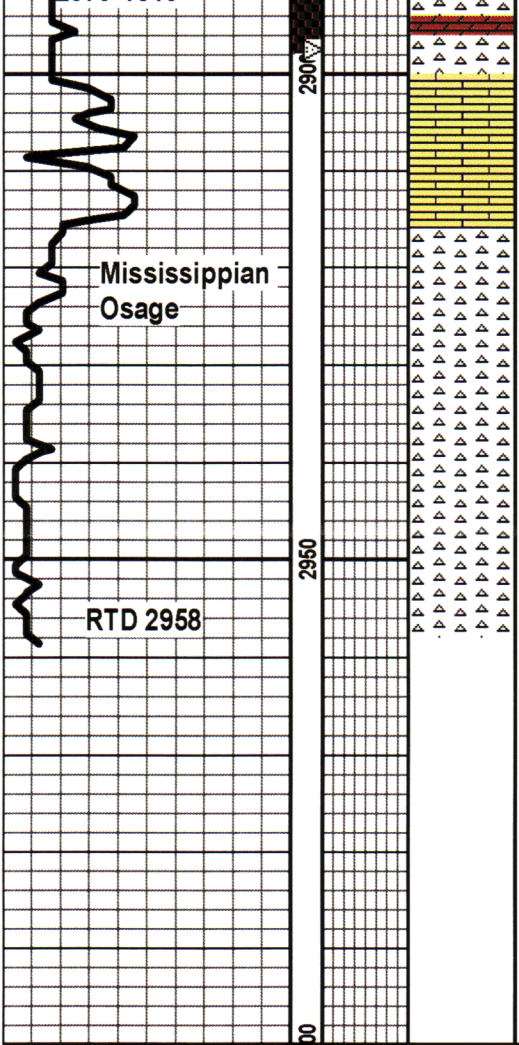
20min.: 756mcf

30min.: 687mcf

40min.: 652mcf

45min.: 652mcf

Flow 10' GCM 8 870' CW



chrused,  
Chert: white, fresh, sharp, no odor, fair fluorescence, sharp.  
no odor, LS: cream, fairxyn, poor interxyn, no show  
Chert: off white, slightly tripolitic, sharp  
Chert: white to off white, modeled, tripolitic, no fluorescence, fresh in part, chky in part

Rec 40 OCM & 870 SW  
IFP: 364-454#  
FFP: 343-498#  
BHP: 616-616#  
HP: 1377-1363#

