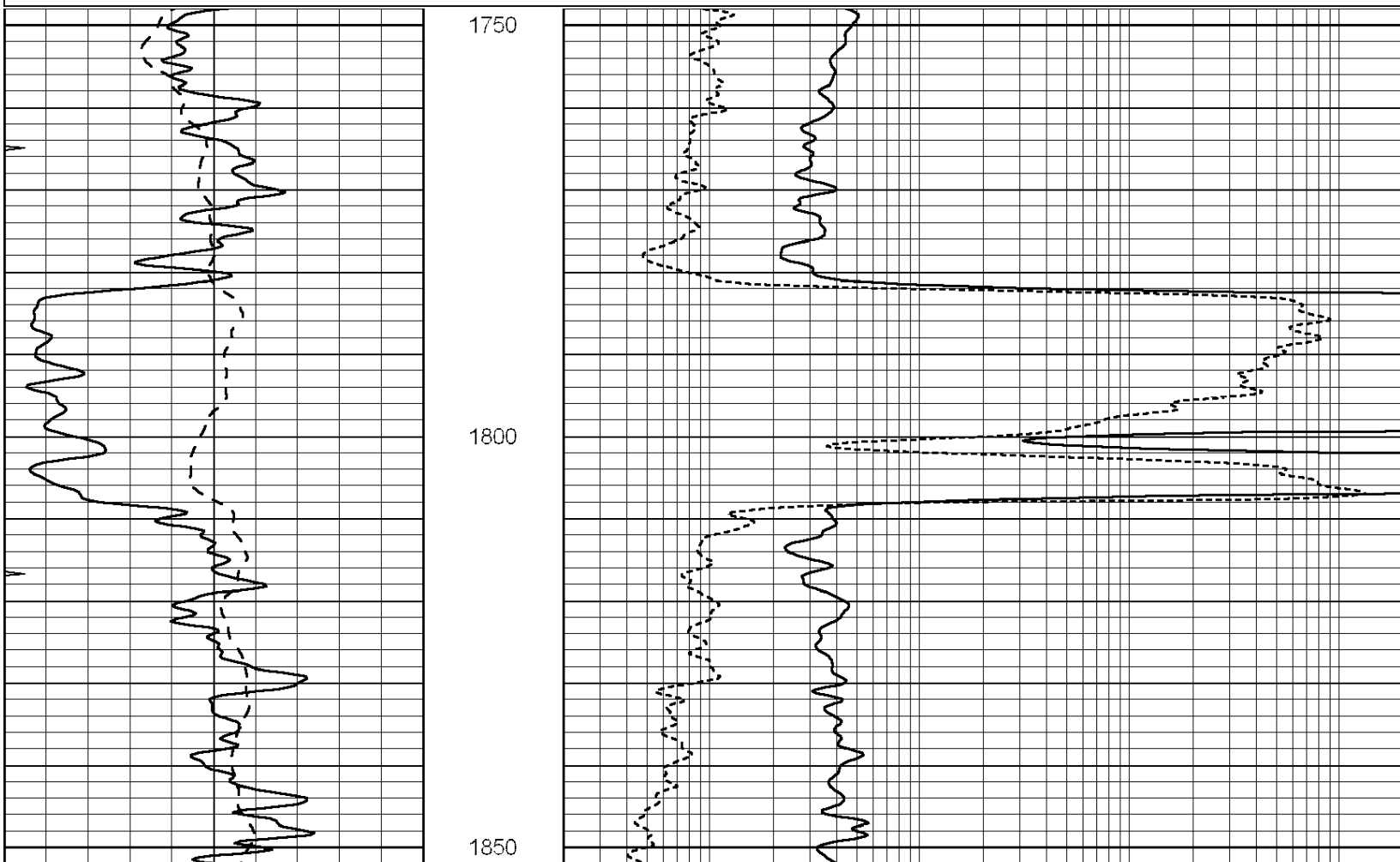




Database File: 006935rag.db  
 Dataset Pathname: pass5.A  
 Presentation Format: rag2  
 Dataset Creation: Mon Jun 13 08:08:12 2011  
 Charted by: Depth in Feet scaled 1:240

0	GAMMA RAY (GAPI)	150	ABHV (ft3)	0.2	GUARD (Ohm-m)	2000
-100	SP (mV)	100		0	NEUTRON (NAPI)	1000
-----			TBHV (ft3)	-----		



0	GAMMA RAY (GAPI)	150	ABHV (ft3)	0.2	GUARD (Ohm-m)	2000
-100	SP (mV)	100		0	NEUTRON (NAPI)	1000
-----			TBHV (ft3)	-----		



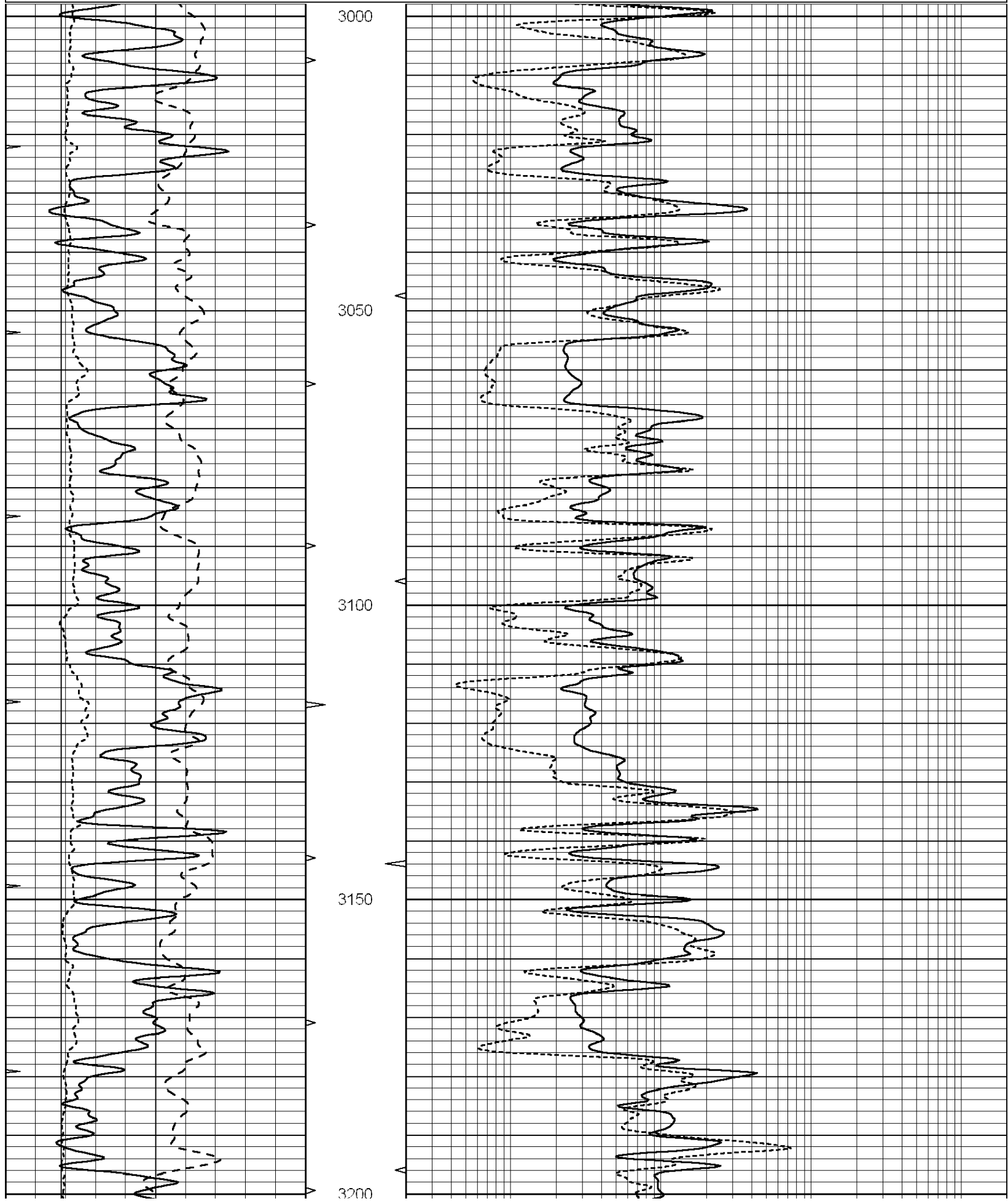
SUPERIOR  
 Hays,  
 Kansas

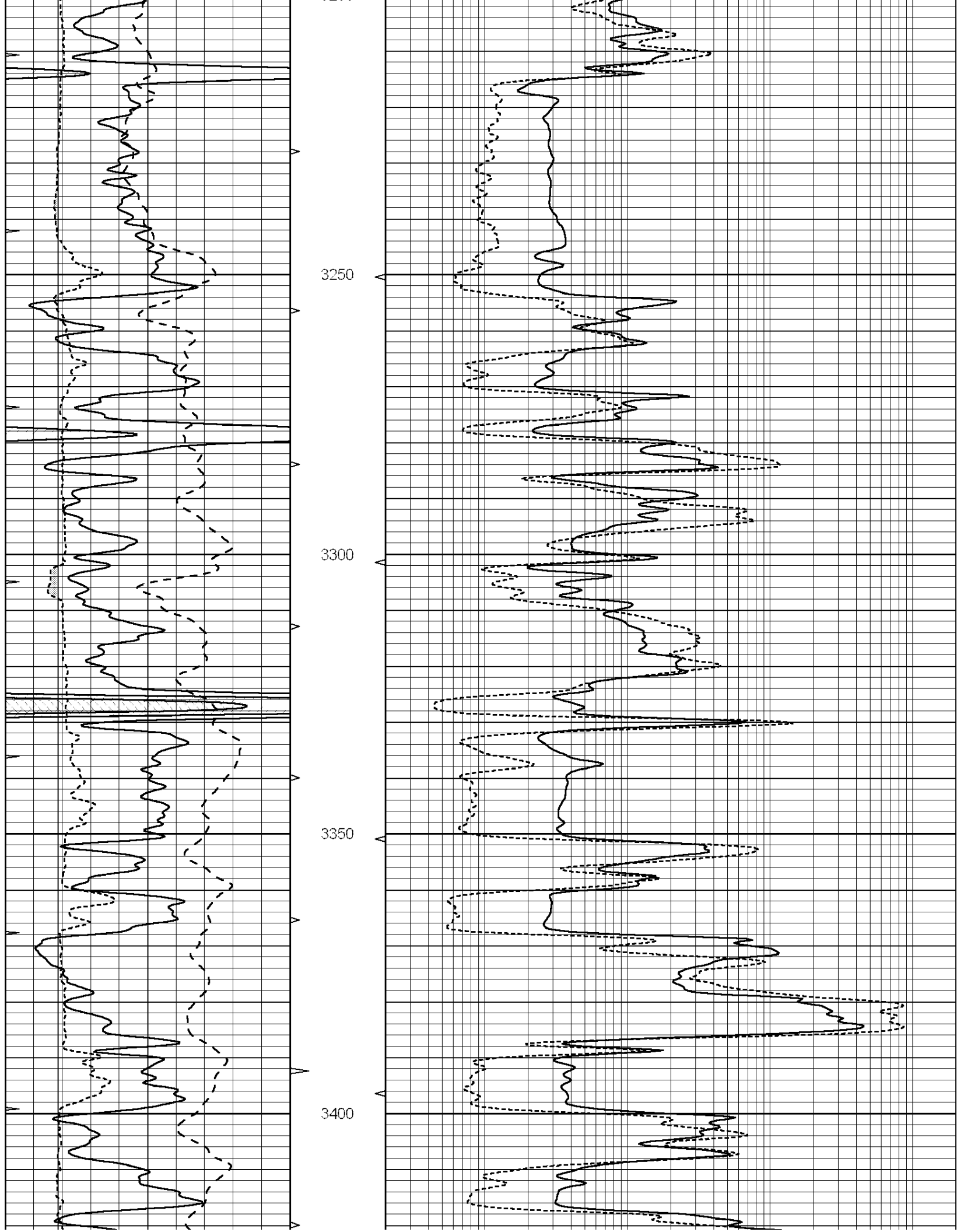
# MAIN SECTION

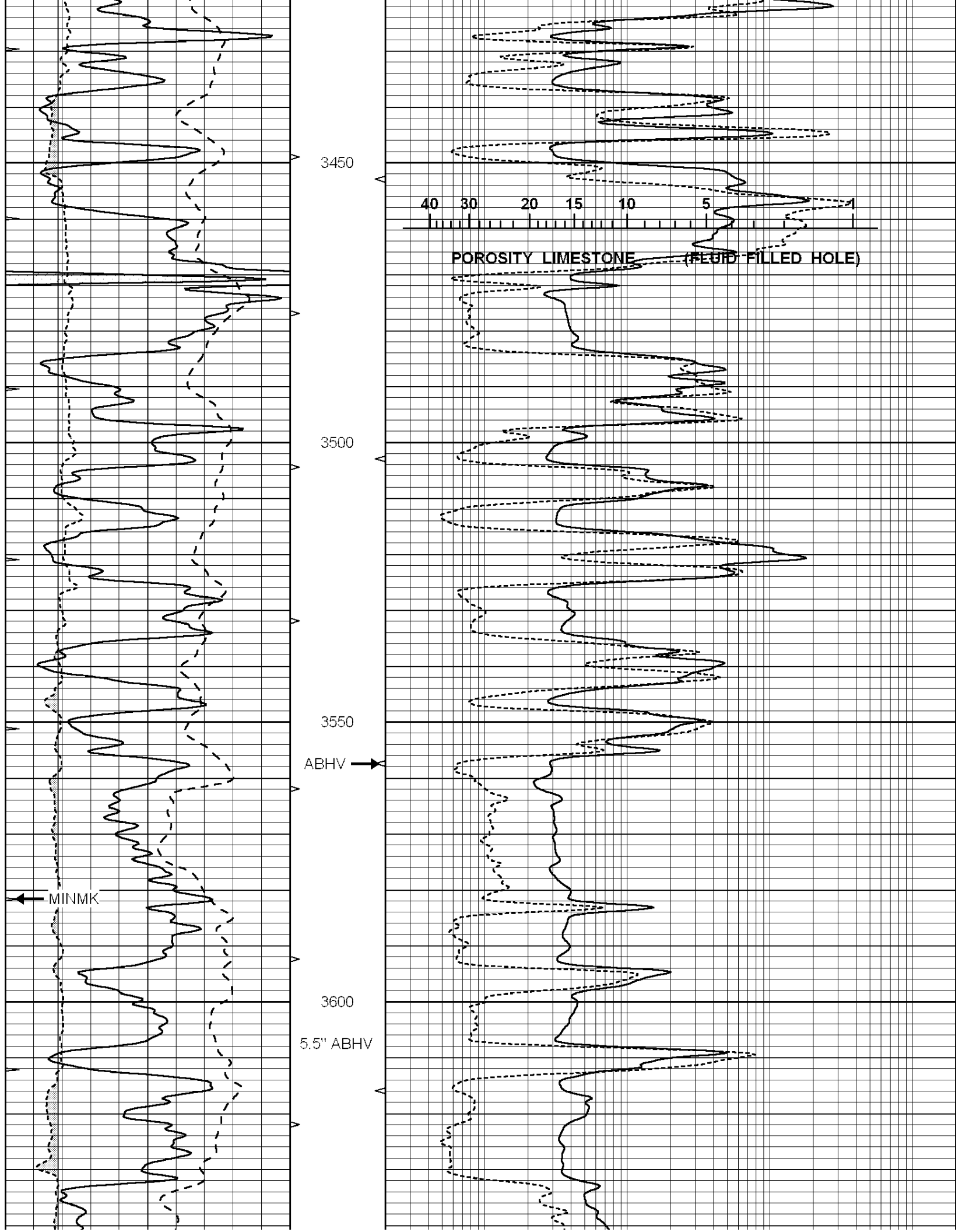
Database File: 006935rag.db  
 Dataset Pathname: pass5.A  
 Presentation Format: rag  
 Dataset Creation: Mon Jun 13 08:08:12 2011  
 Charted by: Depth in Feet scaled 1:240

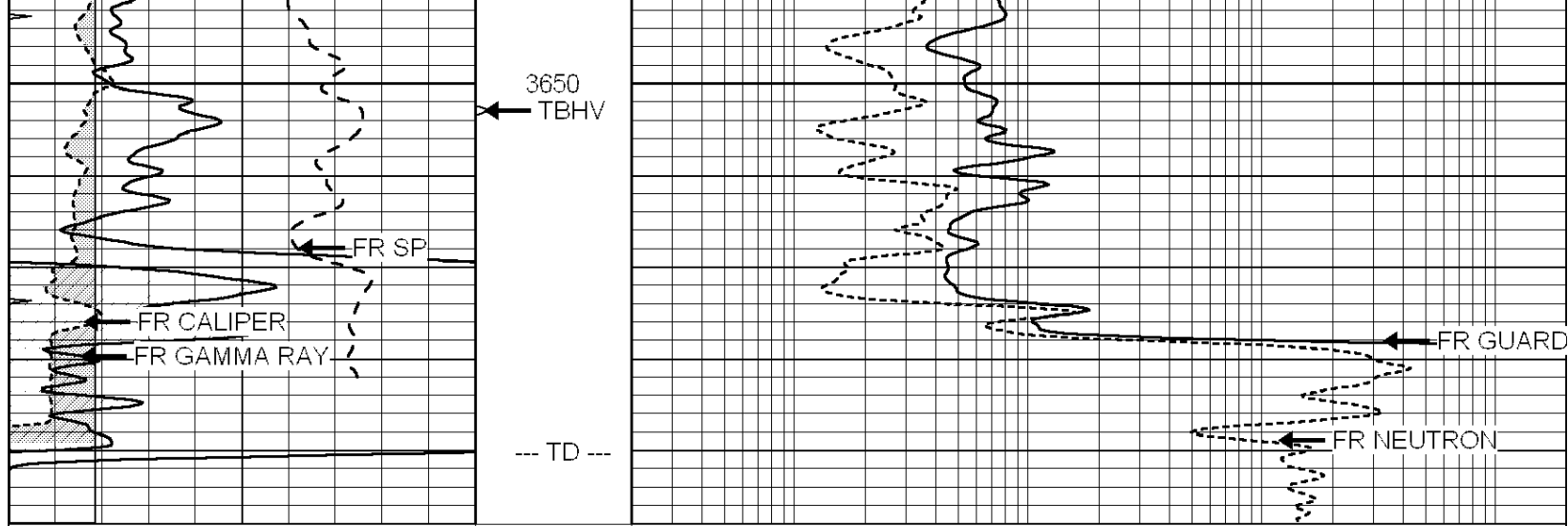
0	GAMMA RAY (GAPI)	150	ABHV	0.2	GUARD (Ohm-m)	2000
---	------------------	-----	------	-----	---------------	------

-100	SP (mV)	100	10 (ft3)	0	0	NEUTRON (NAPI)	1000
6	CALIPER (in)	16	TBHV				
			0 (ft3)	10			









0	GAMMA RAY (GAPI)	150	ABHV	0.2	GUARD (Ohm-m)	2000
-100	SP (mV)	100	10 (ft3) 0 0		NEUTRON (NAPI)	1000
6	CALIPER (in)	16	TBHV			
			0 (ft3) 10			

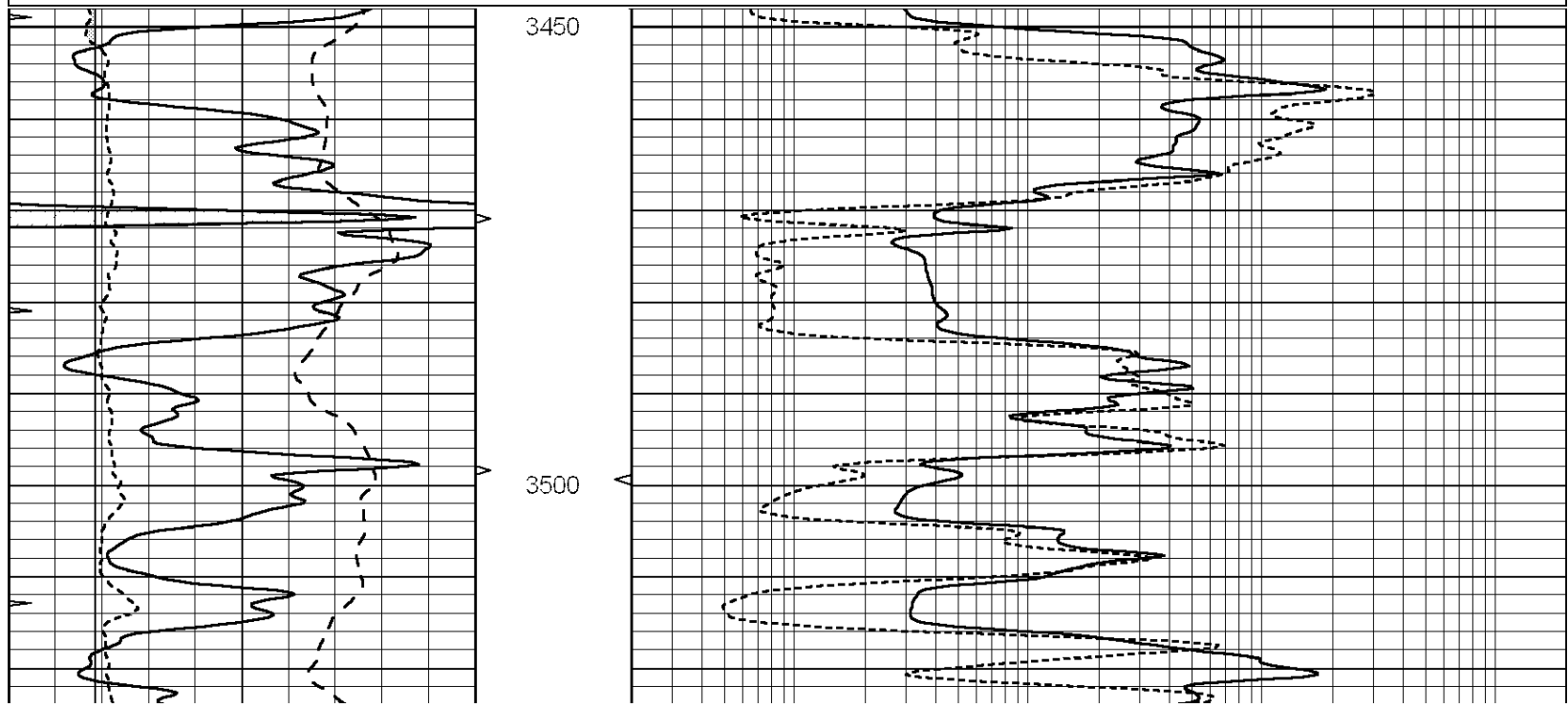


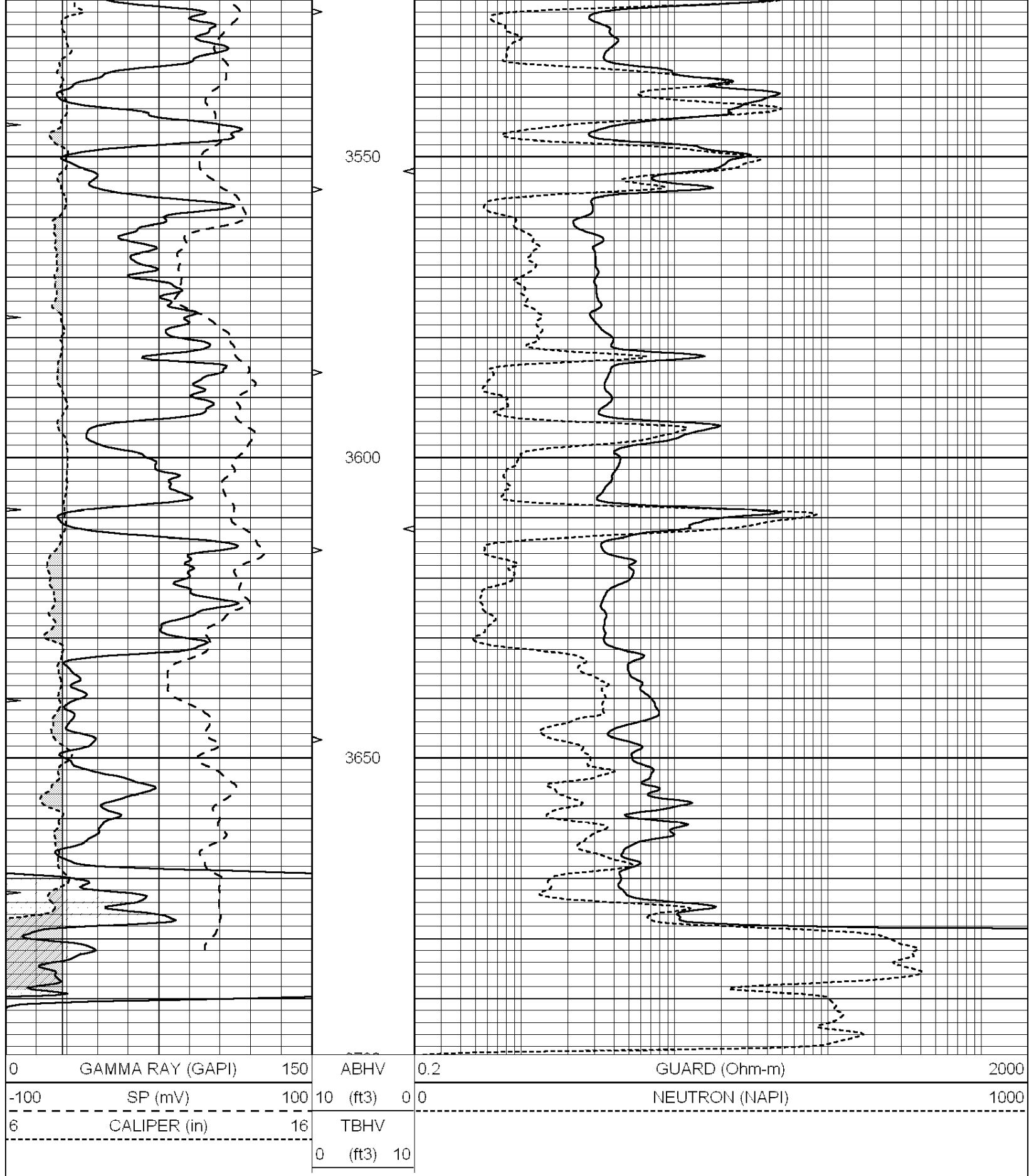
**SUPERIOR**  
**Hays,**  
**Kansas**

# REPEAT SECTION

Database File: 006935rag.db  
 Dataset Pathname: pass4.A  
 Presentation Format: rag  
 Dataset Creation: Mon Jun 13 07:41:53 2011 by Calc Open-Cased 090629  
 Charted by: Depth in Feet scaled 1:240

0	GAMMA RAY (GAPI)	150	ABHV	0.2	GUARD (Ohm-m)	2000
-100	SP (mV)	100	10 (ft3) 0 0		NEUTRON (NAPI)	1000
6	CALIPER (in)	16	TBHV			
			0 (ft3) 10			





Calibration Report

Database File: 006935rag.db  
 Dataset Pathname: pass5.A  
 Dataset Creation: Mon Jun 13 08:08:12 2011

Neutron Calibration Report

Serial Number: RAG1  
 Tool Model: RAG  
 Performed: Mon Jun 13 06:51:52 2011

Calibrator Values: 0 1 NAPI  
 Calibrator Readings: 0 1 cps  
 Sensitivity: 1.3 NAPI/cps

Micro Spherically Focused Log Calibration Report

Serial-Model: RAG1-A  
 Performed: Mon Jun 13 07:08:57 2011

	Readings			References			Results	
	Low	High		Low	High		m	b
Conductivity	0.0110	0.9000	V	10.0000	1000.0000	mmho	1600.0000	-7.5000
Caliper	0.1837	0.3151	V	7.8000	16.0000	in	62.4272	-3.6685

Gamma Ray Calibration Report

Serial Number: RAG1  
 Tool Model: RAG  
 Performed: Mon Jun 13 07:40:42 2011

Calibrator Value: 1.0 GAPI  
 Background Reading: 0.9 cps  
 Calibrator Reading: 1.0 cps  
 Sensitivity: 1.8000 GAPI/cps