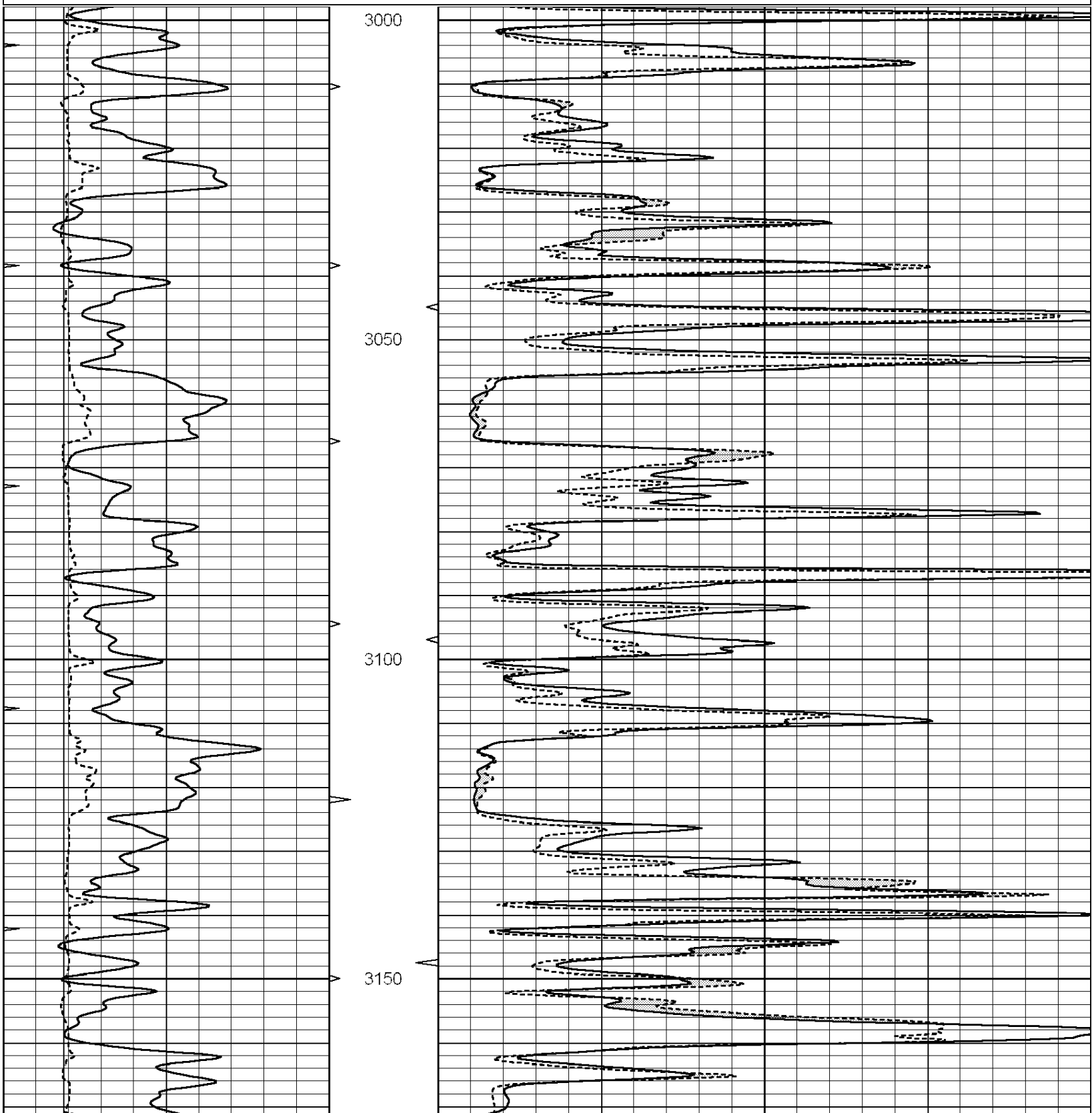
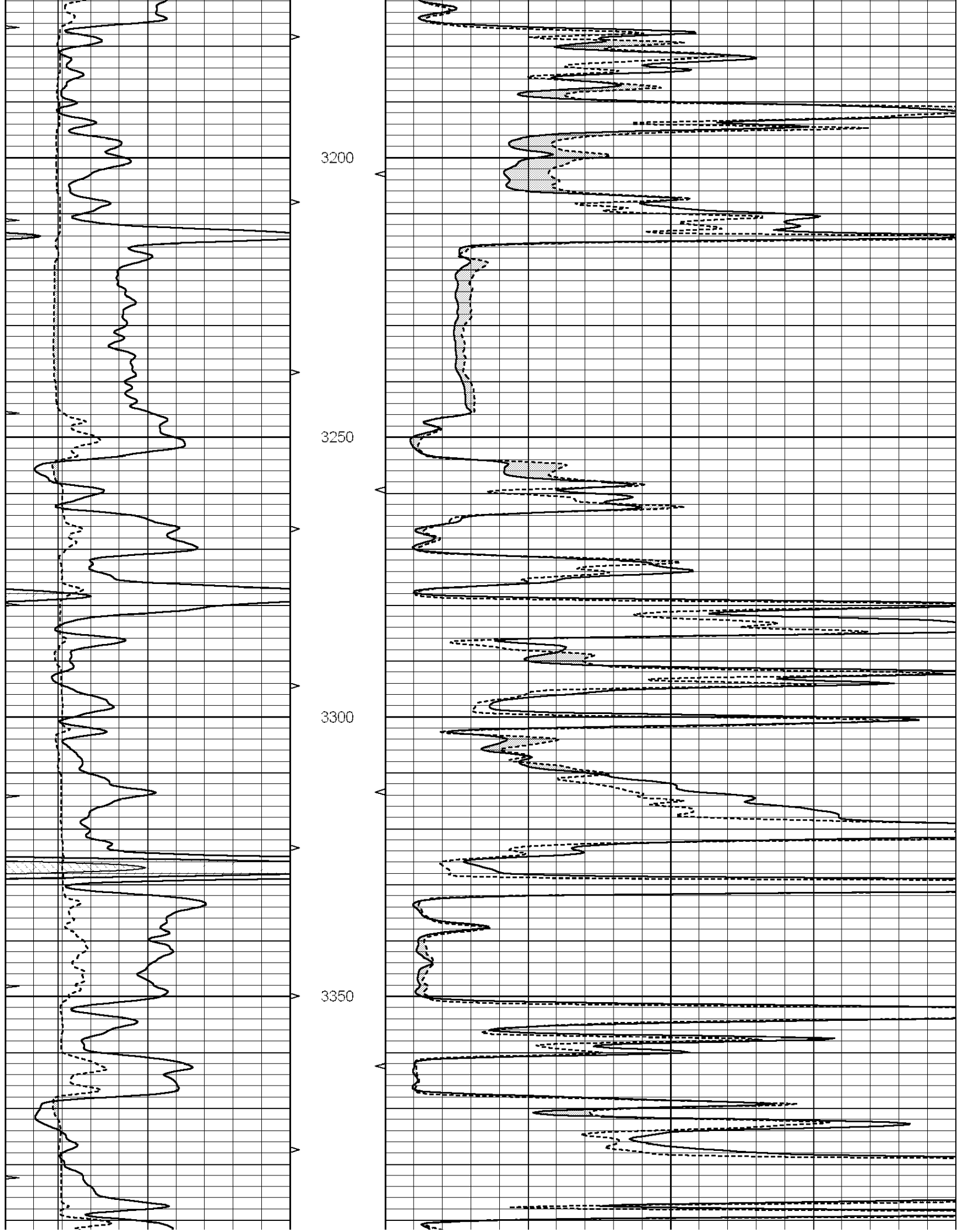


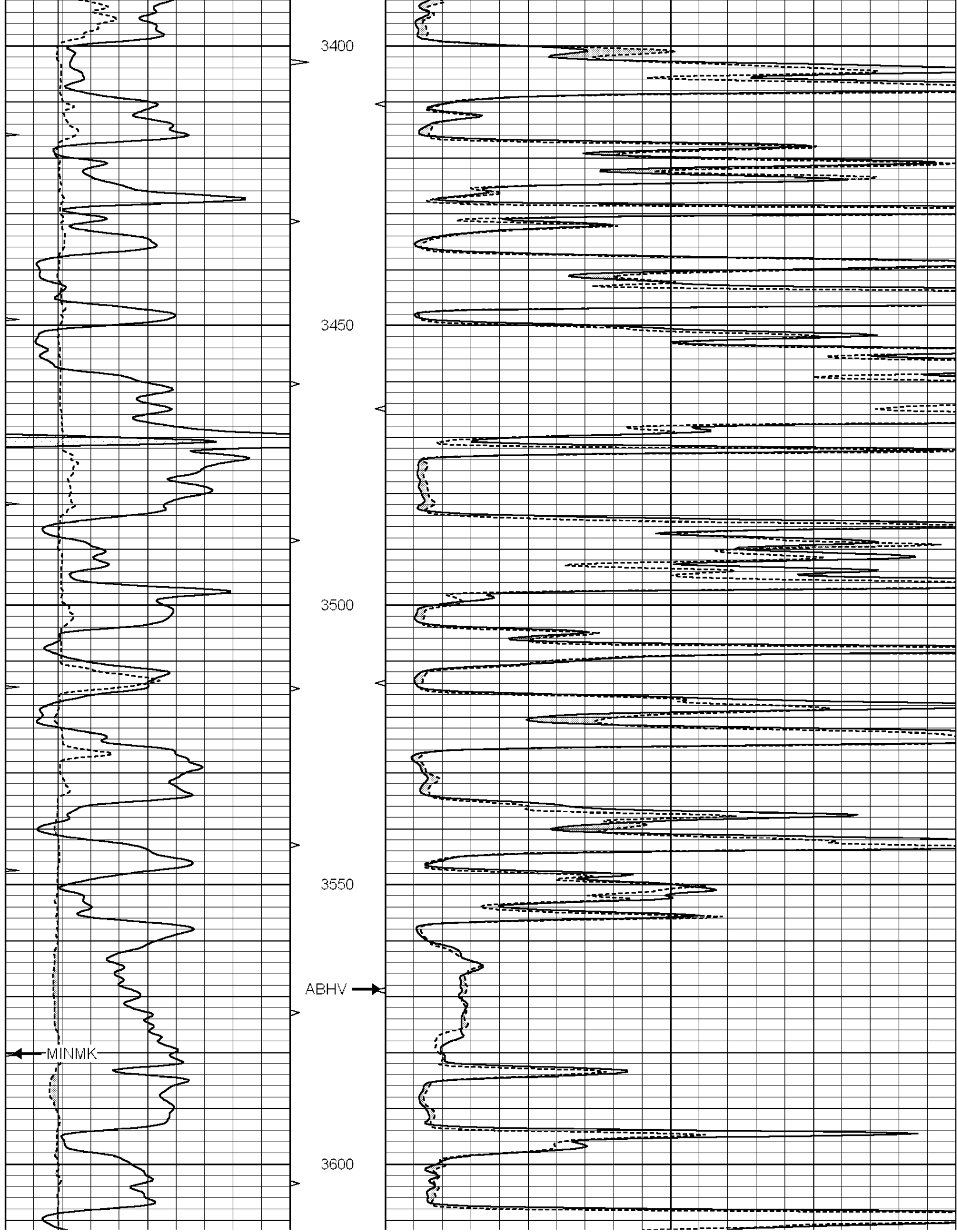
Database File: 006935rag.db
 Dataset Pathname: pass7.1
 Presentation Format: micro
 Dataset Creation: Mon Jun 13 09:04:08 2011 by Calc Open-Cased 090629
 Charted by: Depth in Feet scaled 1:240

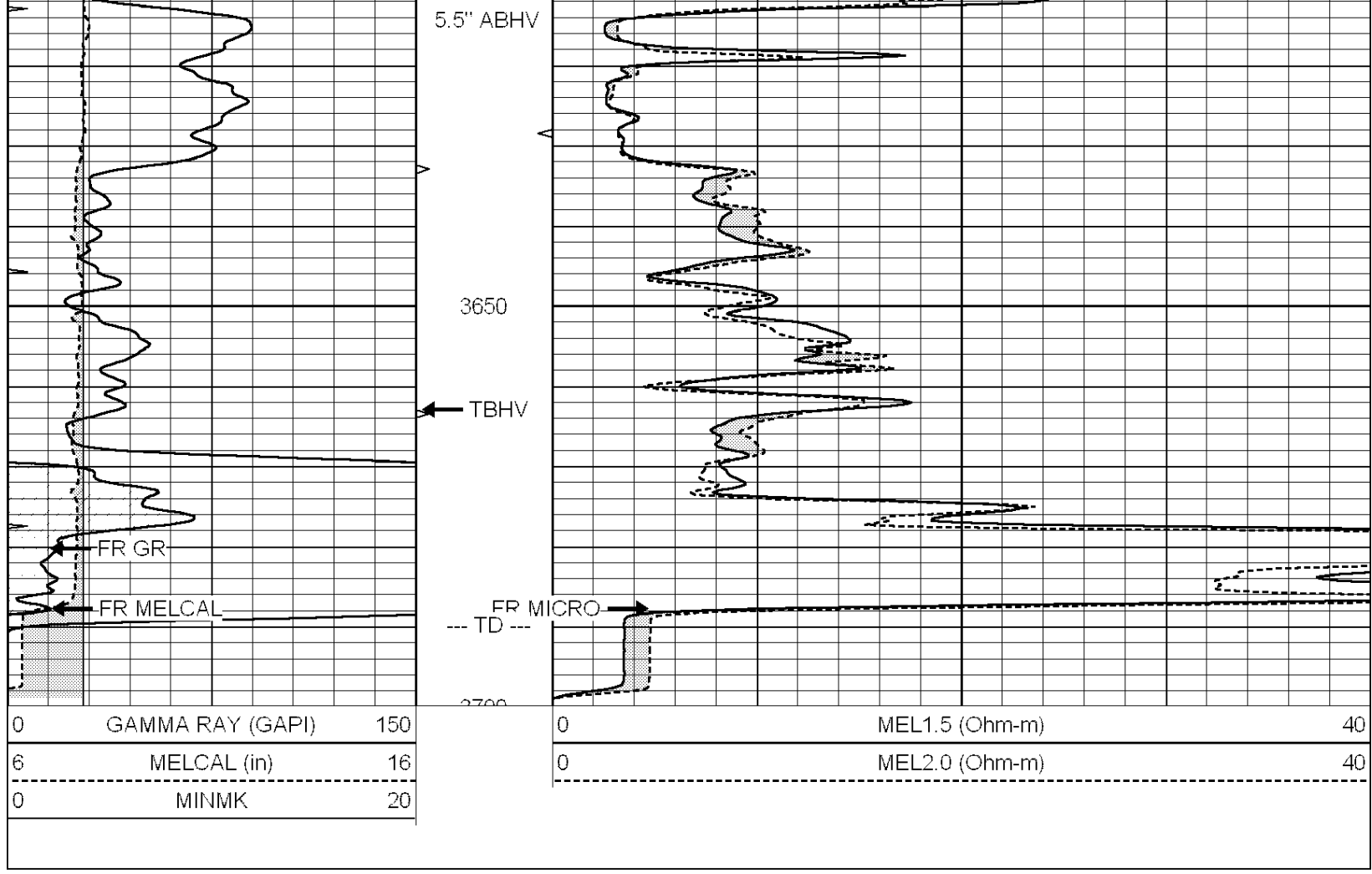
0	GAMMA RAY (GAPI)	150
6	MELCAL (in)	16
0	MINMK	20

0	MEL1.5 (Ohm-m)	40
0	MEL2.0 (Ohm-m)	40







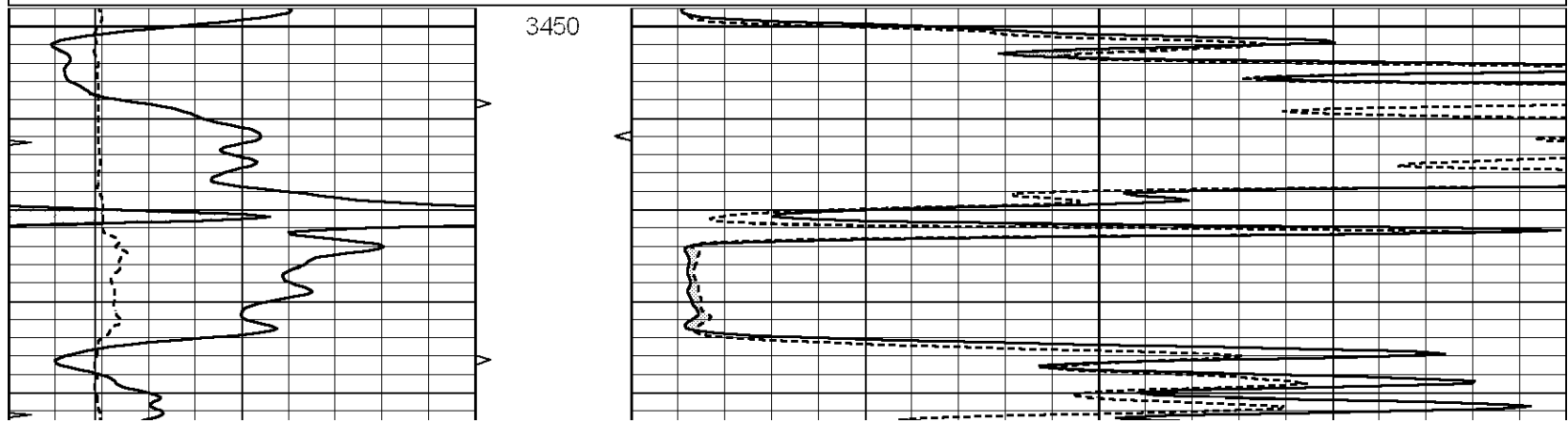


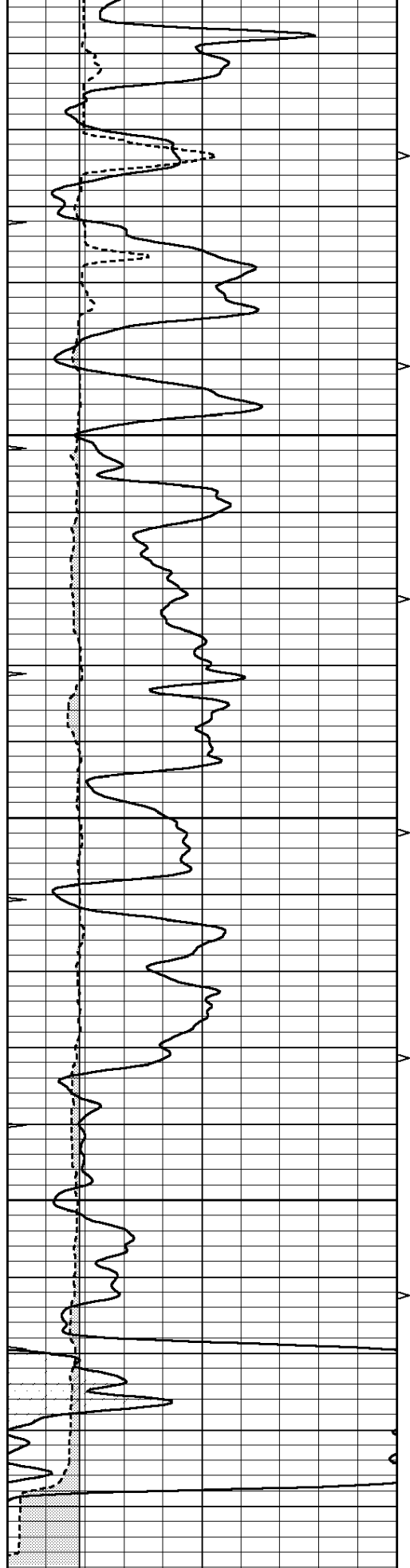
SUPERIOR
Hays,
Kansas

REPEAT SECTION

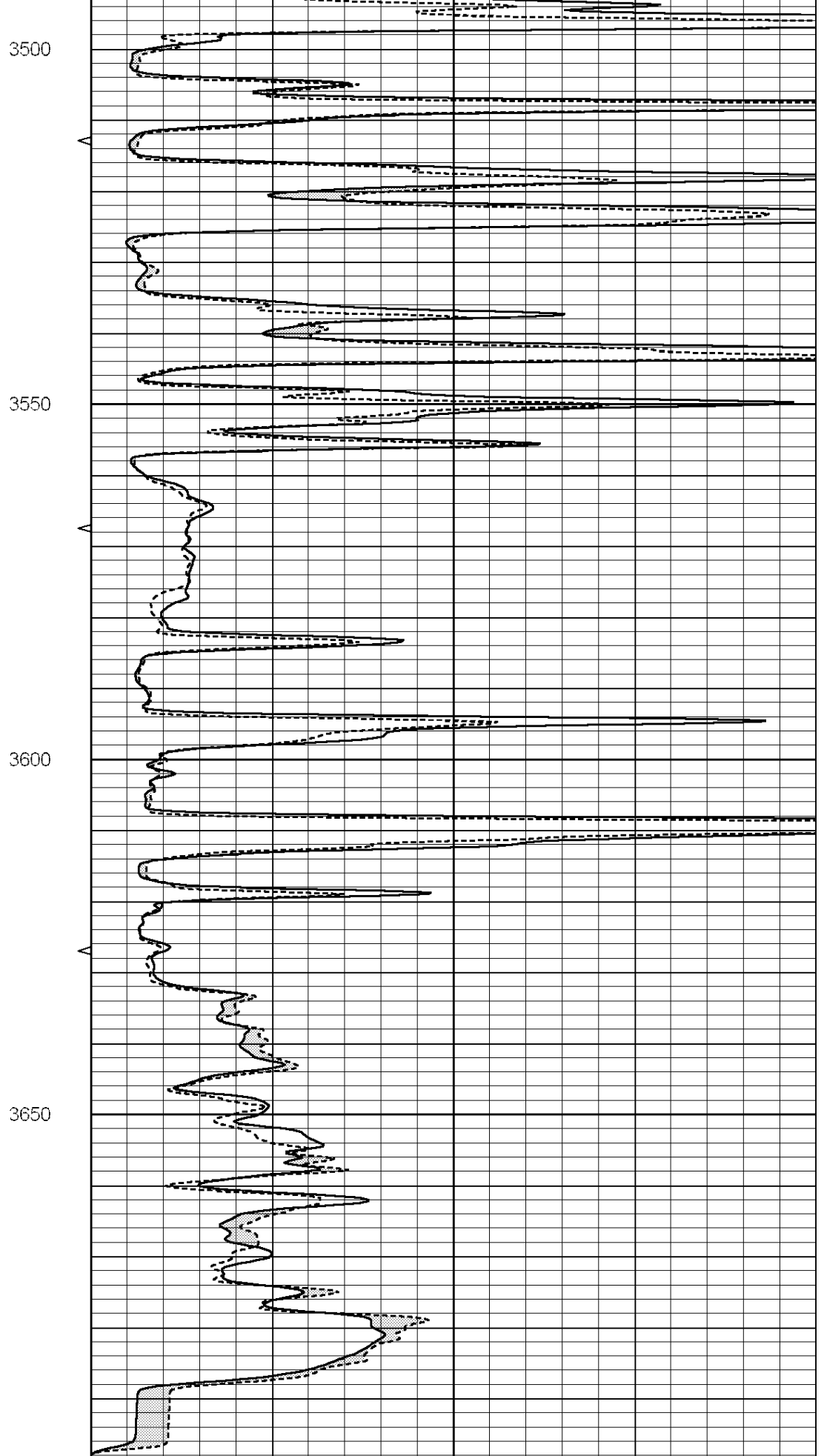
Database File: 006935rag.db
 Dataset Pathname: pass6.1
 Presentation Format: micro
 Dataset Creation: Mon Jun 13 08:32:27 2011 by Calc Open-Cased 090629
 Charted by: Depth in Feet scaled 1:240

0	GAMMA RAY (GAPI)	150	0	MEL1.5 (Ohm-m)	40
6	MELCAL (in)	16	0	MEL2.0 (Ohm-m)	40
0	MINMK	20			





0	GAMMA RAY (GAPI)	150
6	MELCAL (in)	16
0	MINMK	20



0	MEL1.5 (Ohm-m)	40
0	MEL2.0 (Ohm-m)	40

Calibration Report

Database File: 006935rag.db
 Dataset Pathname: pass7.1
 Dataset Creation: Mon Jun 13 09:04:08 2011 by Calc Open-Cased 090629

MICRO Calibration Report

Serial Number: Micro1
 Tool Model: ProbeL
 Performed: Mon Jun 13 08:39:03 2011

Caliper Calibration:	Gain=2.754	Offset=-1.205
References	Low Cal 7.700	High Cal 13.000
Readings	3.233	5.157

1.5" Calibration:	Gain=35.000	Offset=-0.100
References	Low Cal 0.000	High Cal 20.000
Readings	0.003	0.844

2" Calibration:	Gain=36.000	Offset=-0.300
References	Low Cal 0.000	High Cal 20.000
Readings	0.028	0.817

Gamma Ray Calibration Report

Serial Number: GR5
 Tool Model: OPEN
 Performed: Mon Jun 13 08:40:32 2011

Calibrator Value:	1.0	GAPI
Background Reading:	0.0	cps
Calibrator Reading:	1.0	cps
Sensitivity:	0.6900	GAPI/cps