



SUPERIOR
Hays,
Kansas

**DUAL INDUCTION
LOG**

Company VINCENT OIL CORPORATION
Well STIMPERT #1-7
Field KINGSDOWN NORTHWEST
County FORD
State KANSAS

Company VINCENT OIL CORPORATION
Well STIMPERT #1-7
Field KINGSDOWN NORTHWEST
County FORD State KANSAS

Location: API # : 15-057-20720-0000
285' FNL & 2105' FEL
NE - NW - NW - NE
SEC 7 TWP 29S RGE 22W
Permanent Datum GROUND LEVEL Elevation 2512
Log Measured From KELLY BUSHING 12' A.G.L.
Drilling Measured From KELLY BUSHING
Other Services
CDL/CNL/PE
MEL/SONIC
Elevation
K.B. 2524
D.F. 2522
G.L. 2512

| | |
|------------------------------|---------------|
| Date | 3/27/11 |
| Run Number | ONE |
| Depth Driller | 5301 |
| Depth Logger | 5306 |
| Bottom Logged Interval | 5304 |
| Top Log Interval | 00 |
| Casing Driller | 8 5/8" @ 696 |
| Casing Logger | 697 |
| Bit Size | 7 7/8" |
| Type Fluid in Hole | CHEMICAL MUD |
| Density / Viscosity | 9.4/53 |
| pH / Fluid Loss | 10.0/8.8 |
| Source of Sample | FLOWLINE |
| Rim @ Meas. Temp | .550 @ 70F |
| Rmf @ Meas. Temp | .413 @ 70F |
| Rmc @ Meas. Temp | .660 @ 70F |
| Source of Rmf / Rmc | MEASUREMENT |
| Rim @ BHT | .301 @ 128F |
| Time Circulation Stopped | 3 HOURS |
| Time Logger on Bottom | 8:00 P.M. |
| Maximum Recorded Temperature | 128F |
| Equipment Number | 0836 |
| Location | HAYS, KANSAS |
| Recorded By | JEFF LUEBBERS |
| Witnessed By | JIM HALL |

<<< Fold Here >>>

All interpretations are opinions based on inferences from electrical or other measurements and we cannot and do not guarantee the accuracy or correctness of any interpretation, and we shall not, except in the case of gross or willful negligence on our part, be liable or responsible for any loss, costs, damages, or expenses incurred or sustained by anyone resulting from any interpretation made by any of our officers, agents or employees. These interpretations are also subject to our general terms and conditions set out in our current Price Schedule.

Comments

THANK YOU FOR USING SUPERIOR WELL SERVICE HAYS, KANSAS (785) 628-6395
DIRECTIONS
KINGSDOWN, KS. & HWY 54, 1N. ON "RD. 125" TO "WILDFIRE RD.", 1/2W., S. INTO



SUPERIOR
Hays,
Kansas

MAIN SECTION

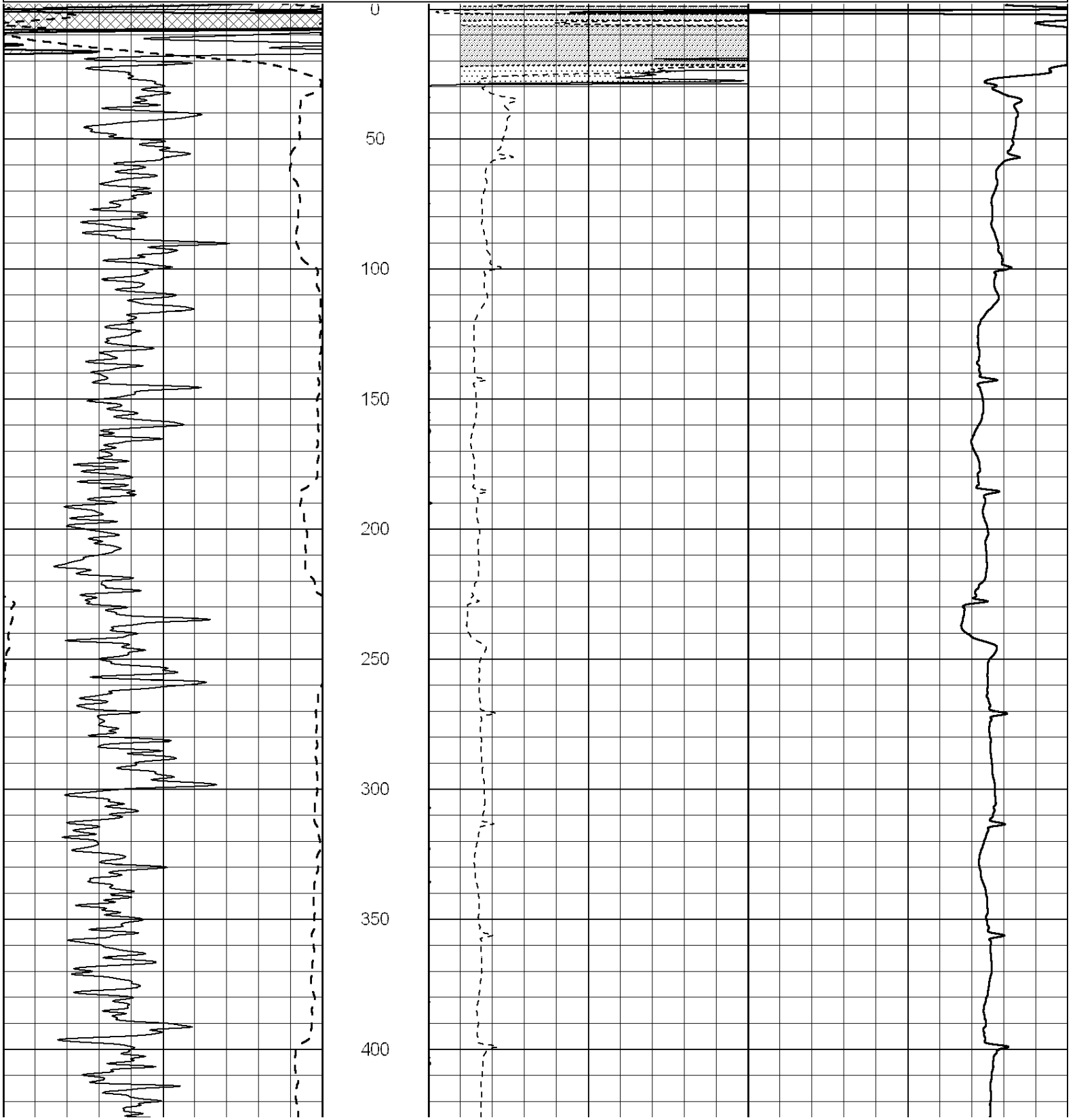
Database File: 006622pe.db
 Dataset Pathname: pass3.6
 Presentation Format: dil2
 Dataset Creation: Sun Mar 27 11:36:53 2011
 Charted by: Depth in Feet scaled 1:600

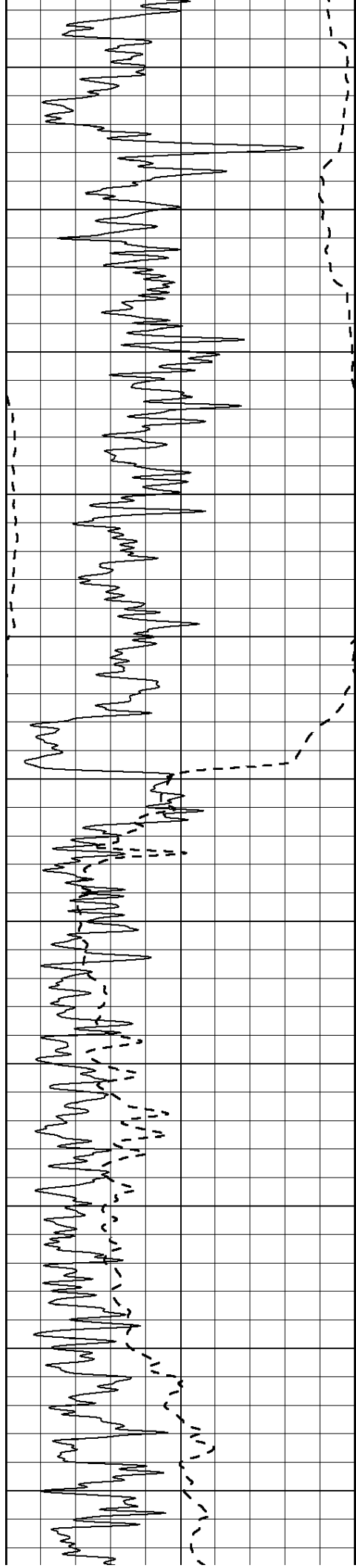
| | | |
|------|------------------|-----|
| 0 | Gamma Ray (GAPI) | 150 |
| -100 | SP (mV) | 100 |

| | | |
|---|--------------|----|
| 0 | RLL3 (Ohm-m) | 50 |
| 0 | RILD (Ohm-m) | 50 |

| | | |
|------|---------------|---|
| 1000 | CILD (mmho/m) | 0 |
|------|---------------|---|

| | | |
|----|------------------|-----|
| 50 | RILD X10 (Ohm-m) | 500 |
| 50 | RLL3 X10 (Ohm-m) | 500 |





450

500

550

600

650

700

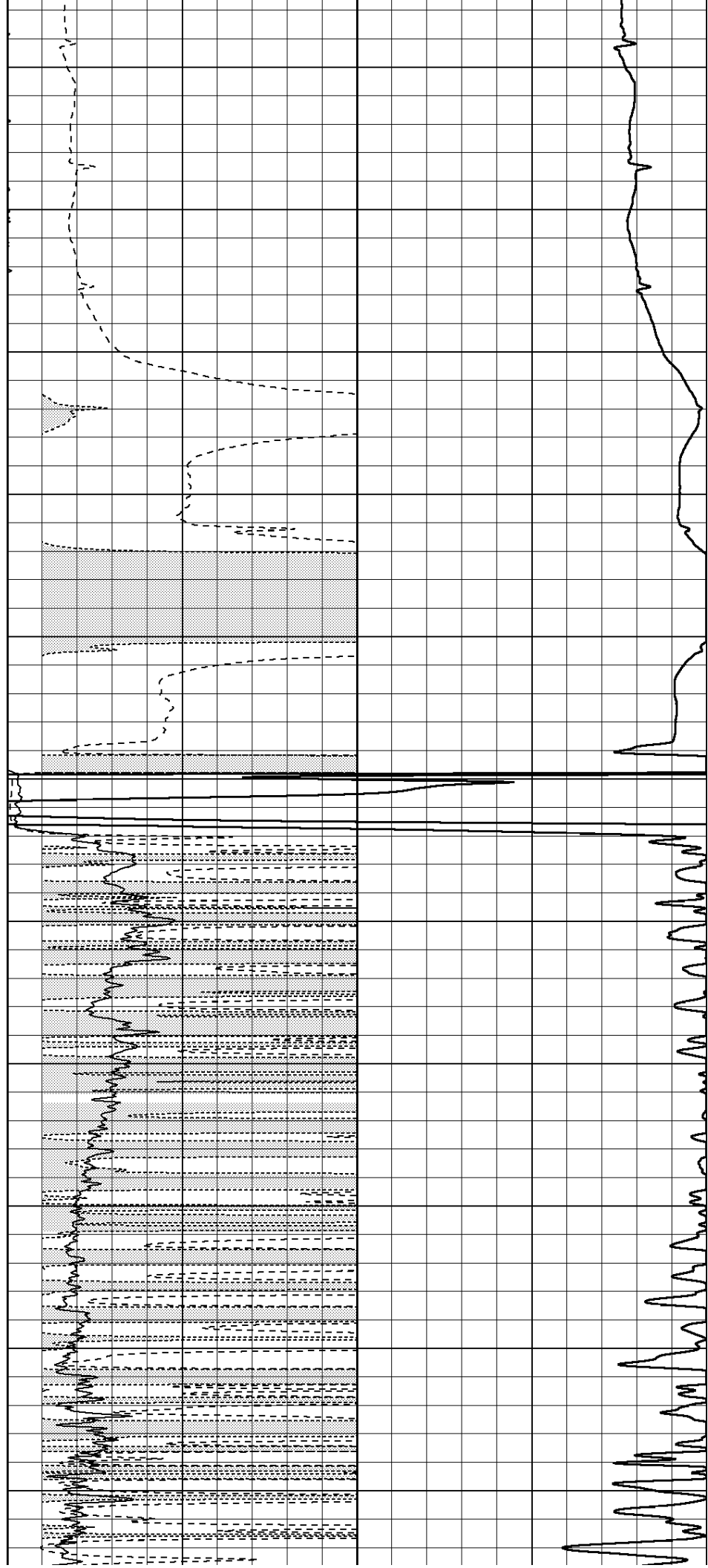
750

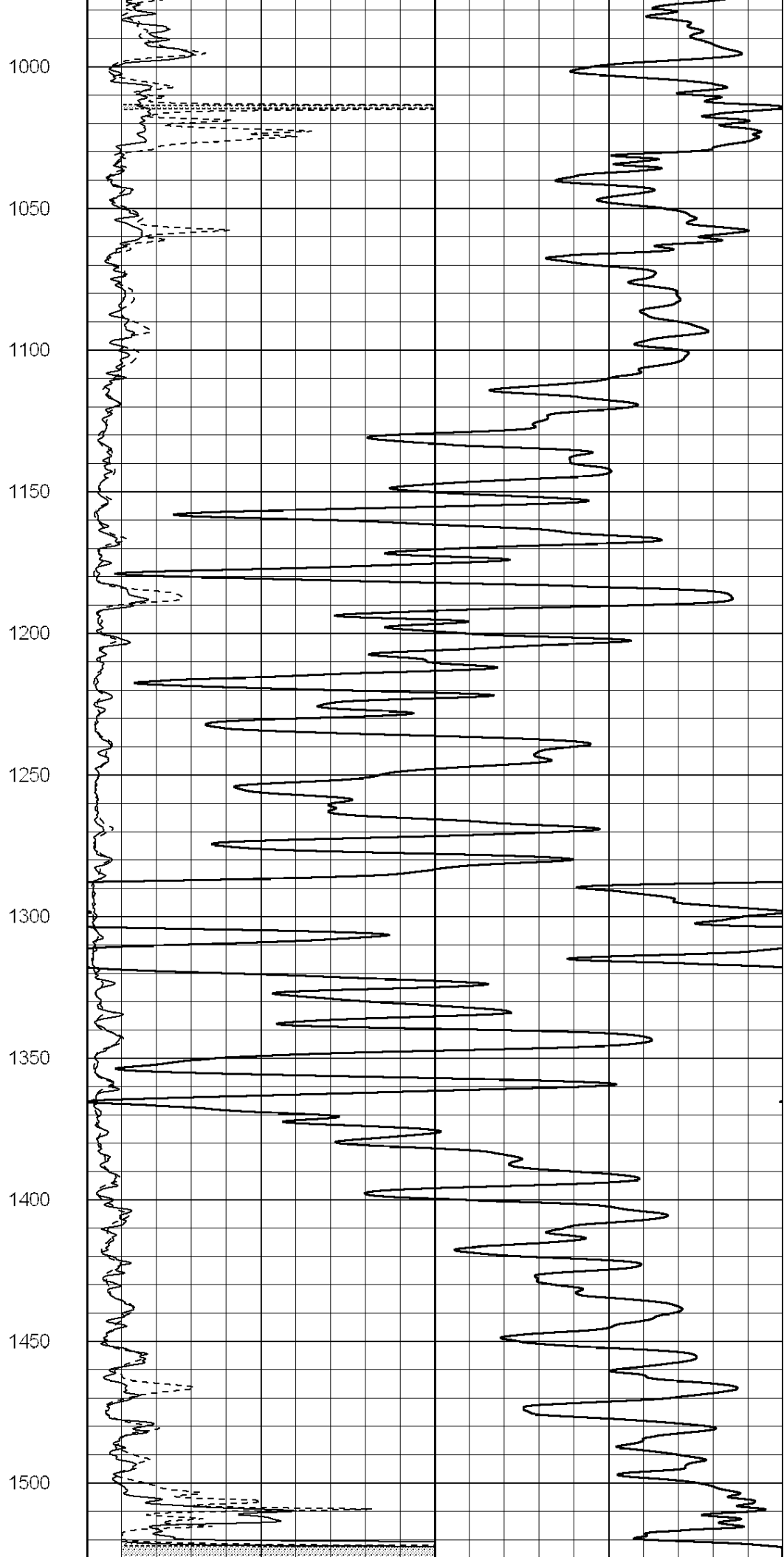
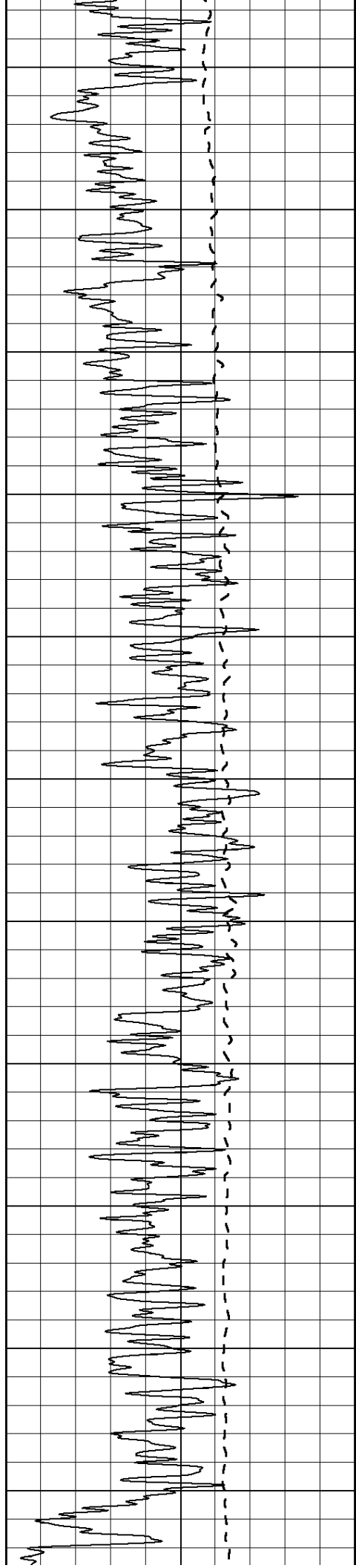
800

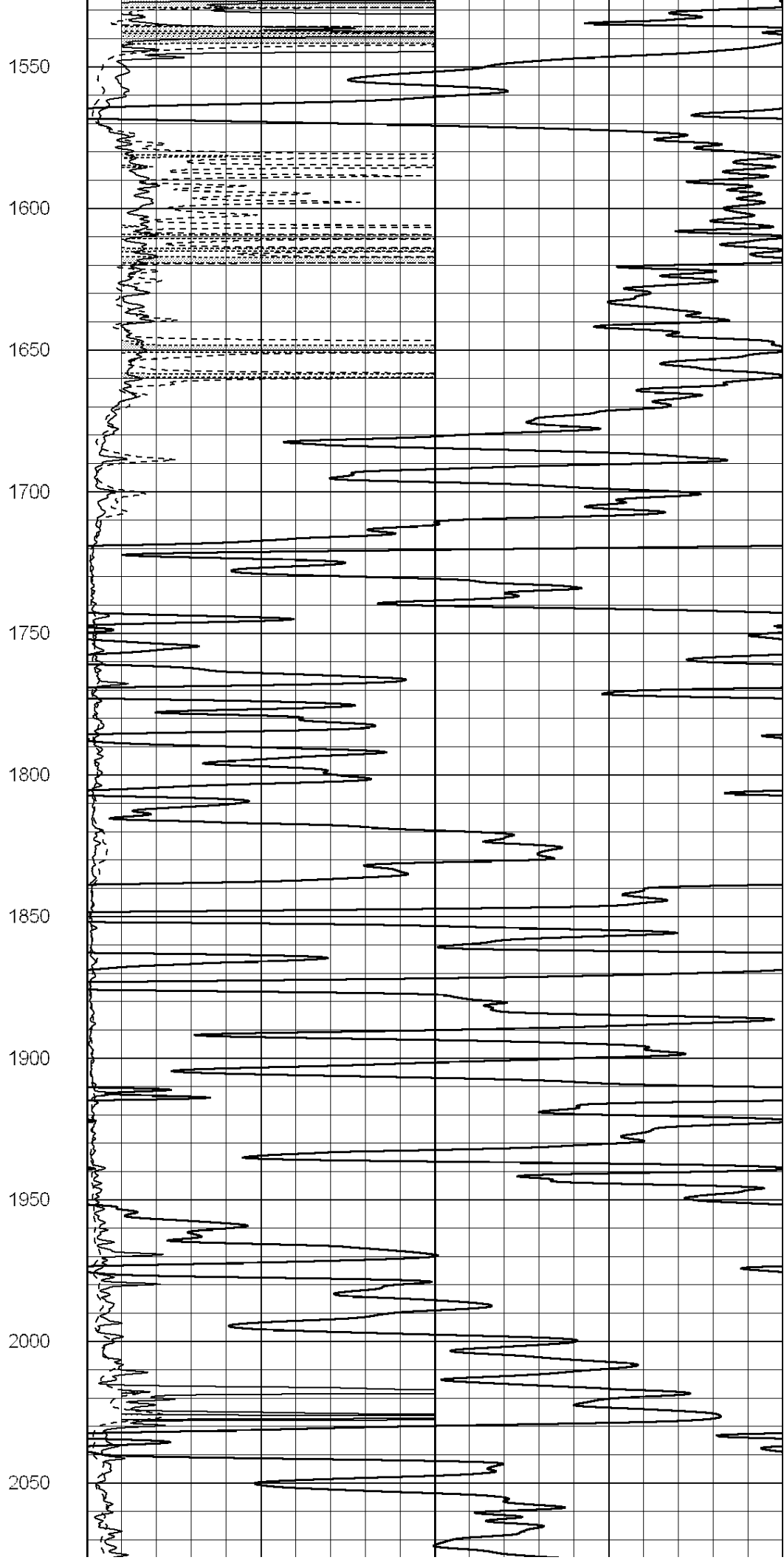
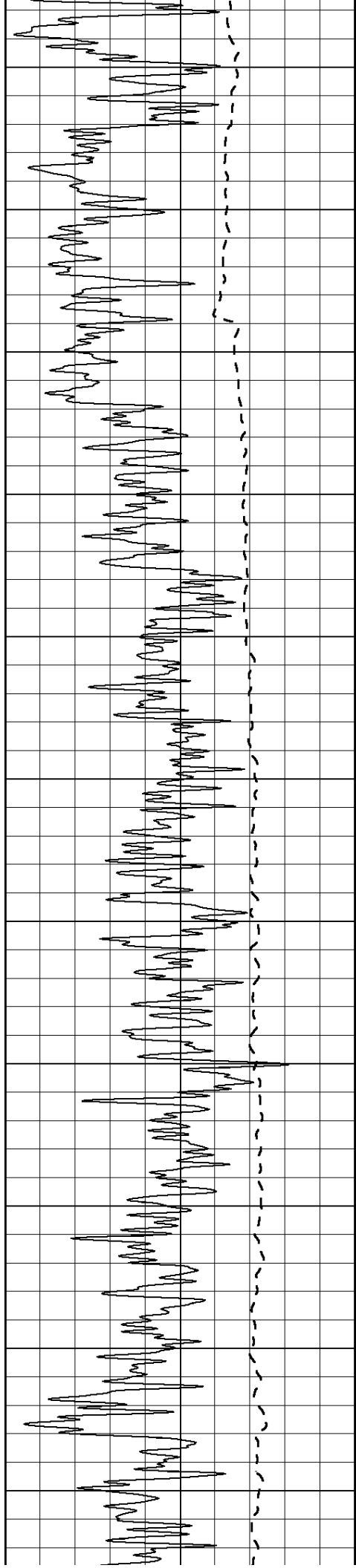
850

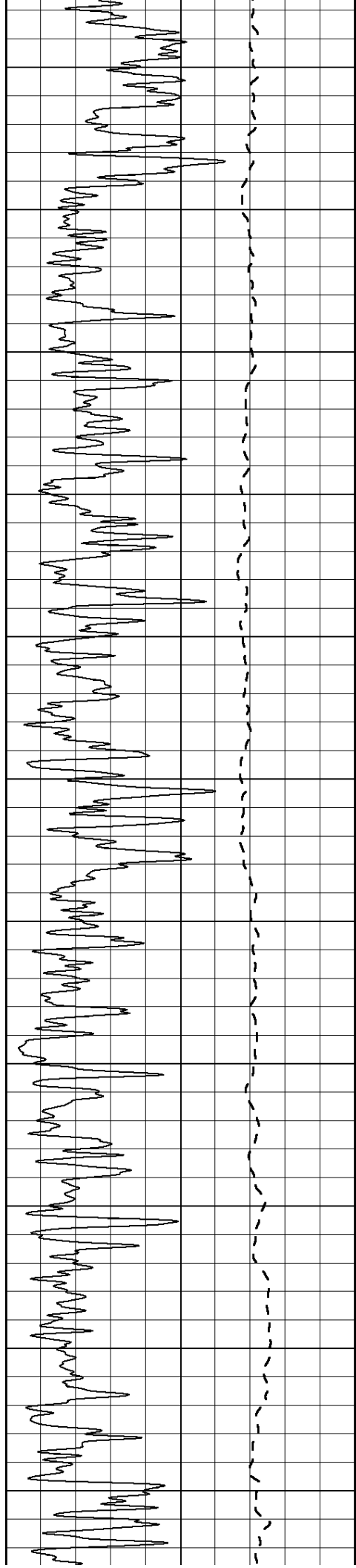
900

950









2100

2150

2200

2250

2300

2350

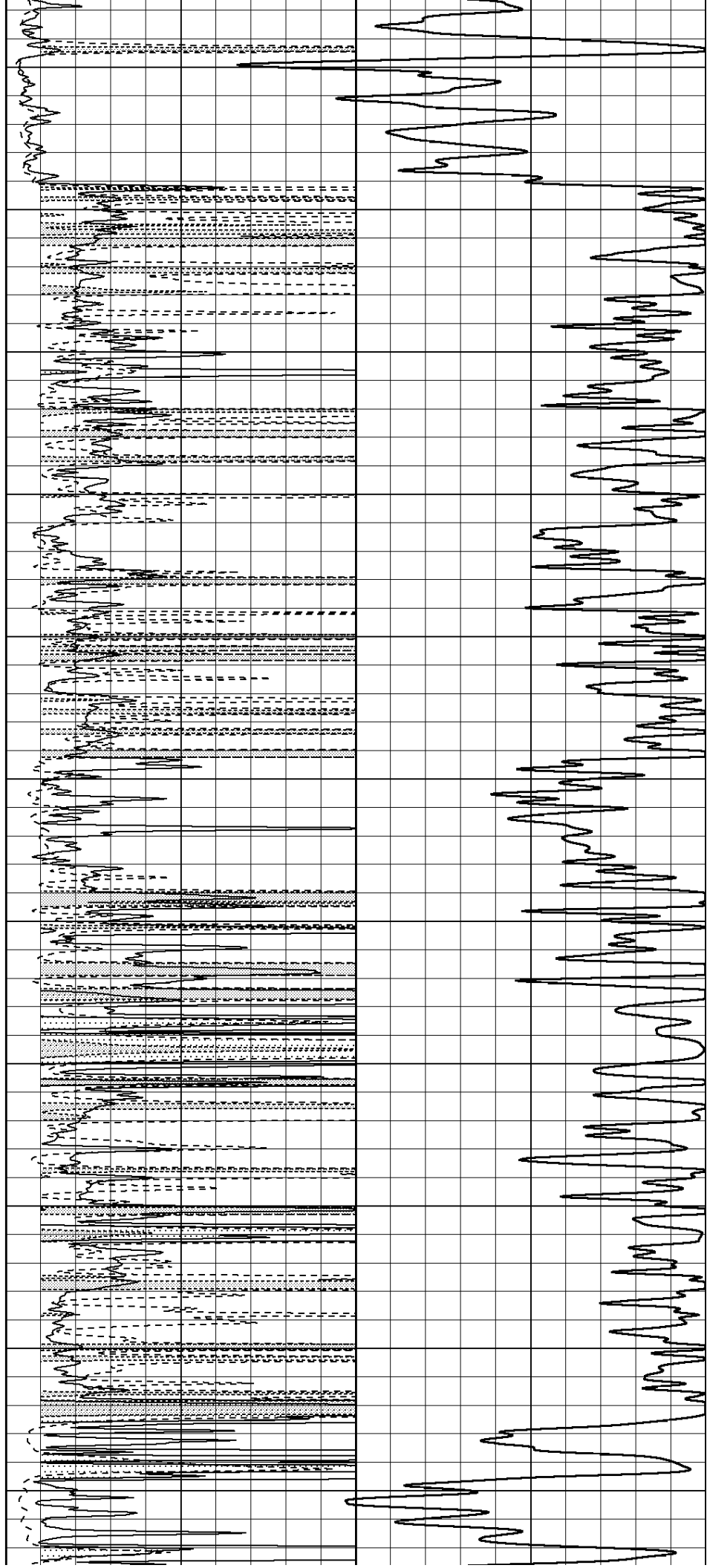
2400

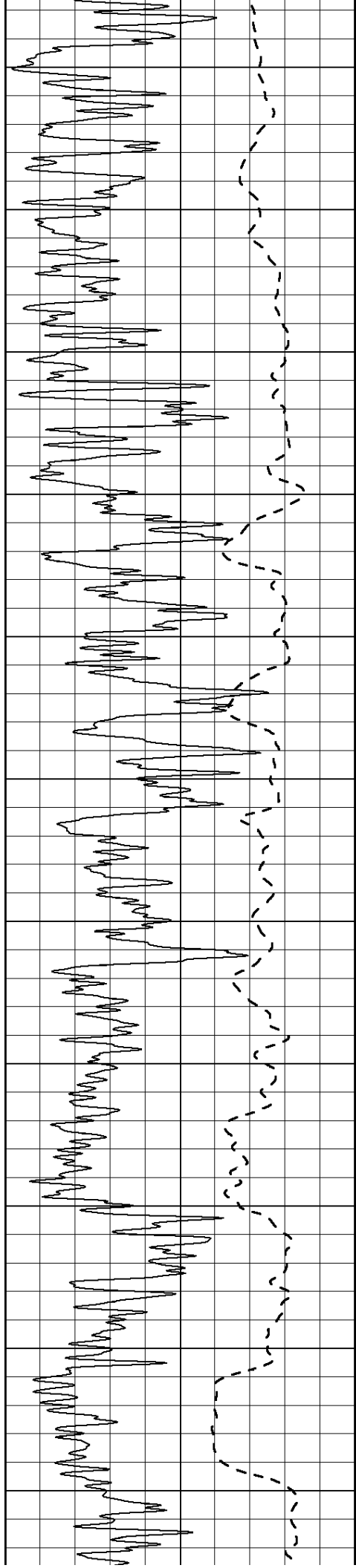
2450

2500

2550

2600





2650

2700

2750

2800

2850

2900

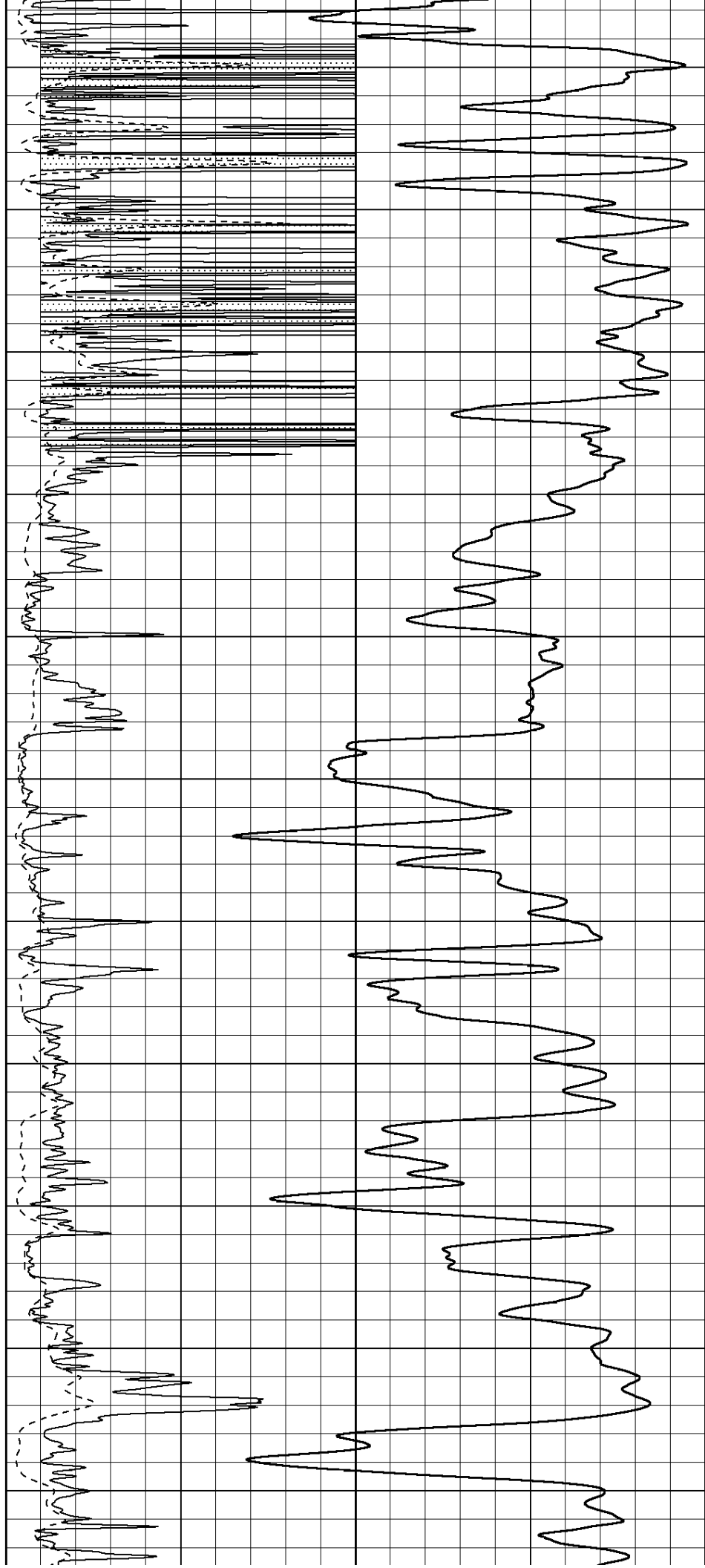
2950

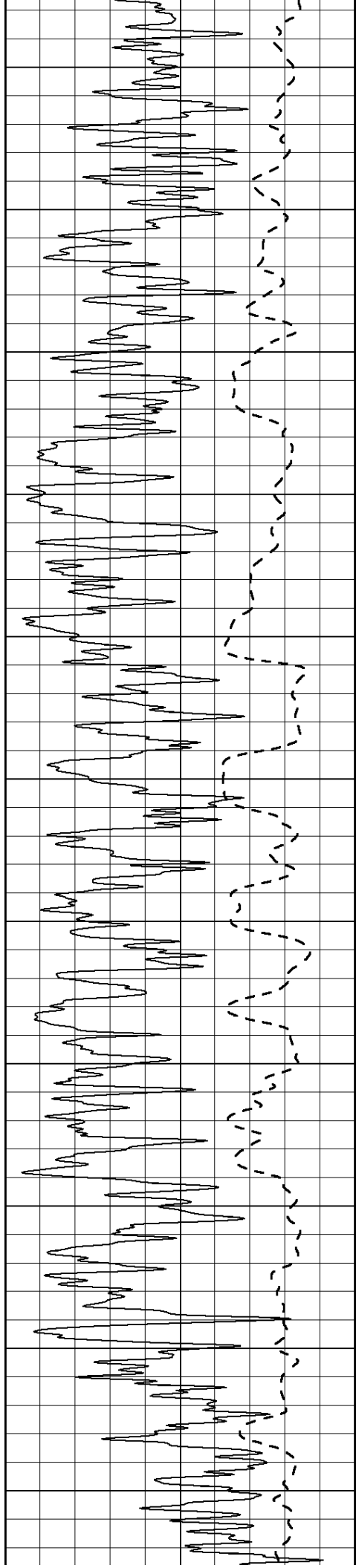
3000

3050

3100

3150





3200

3250

3300

3350

3400

3450

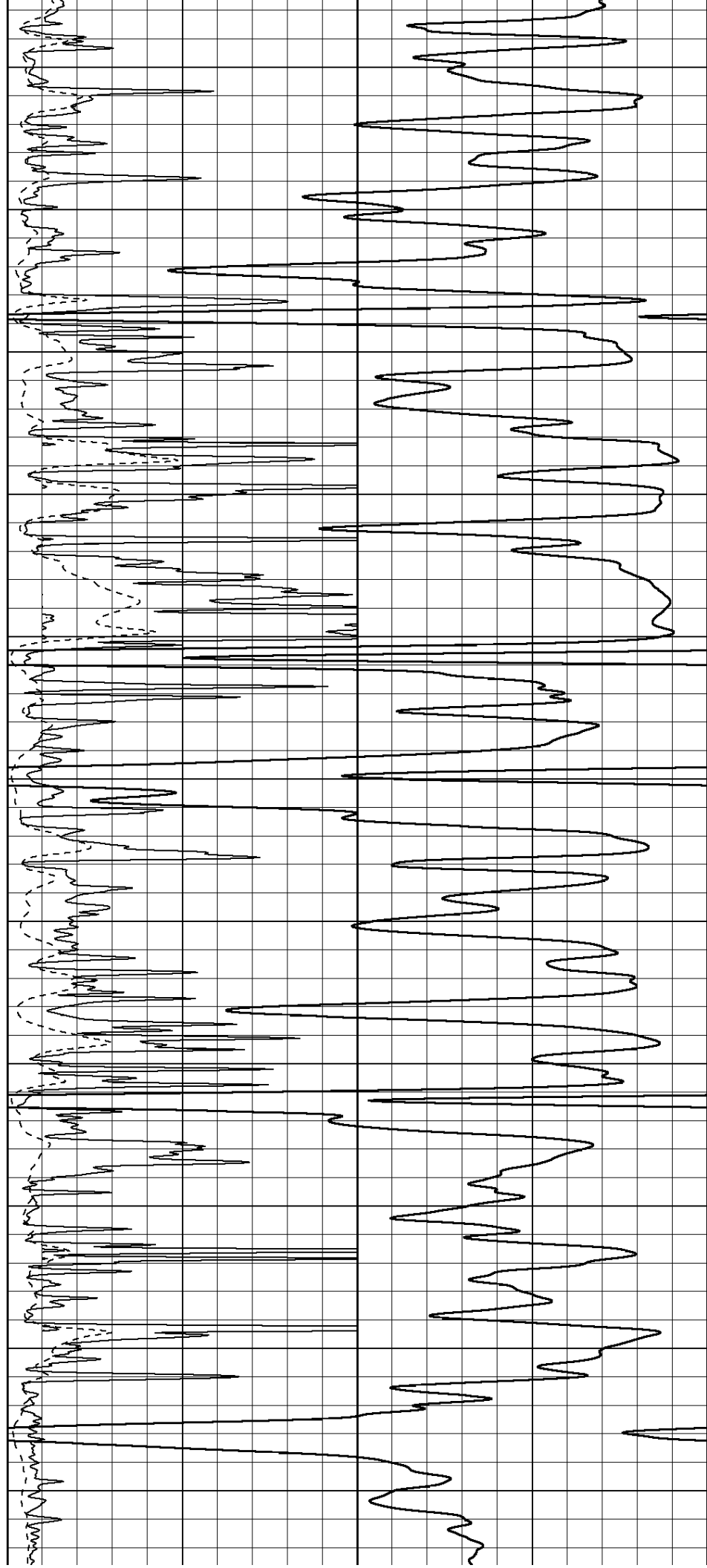
3500

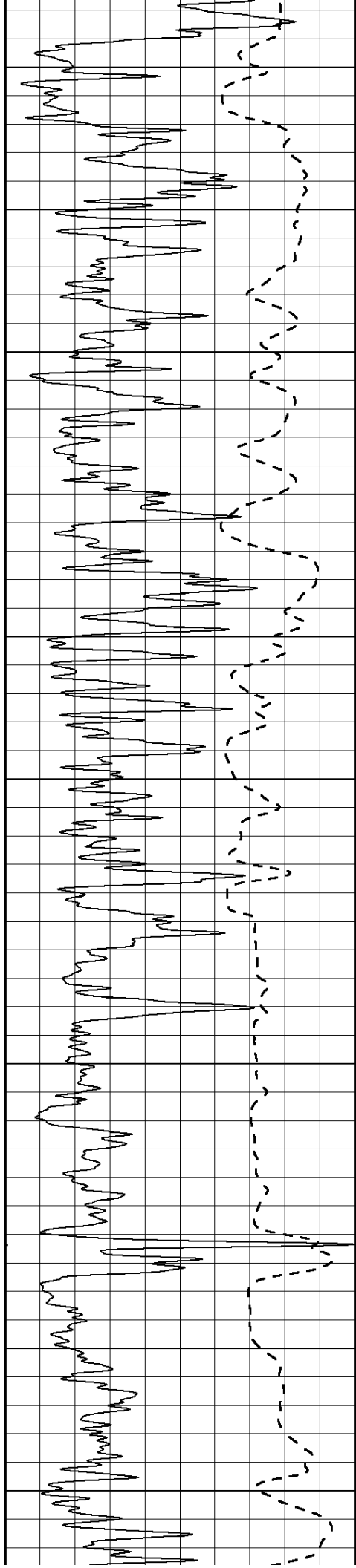
3550

3600

3650

3700





3750

3800

3850

3900

3950

4000

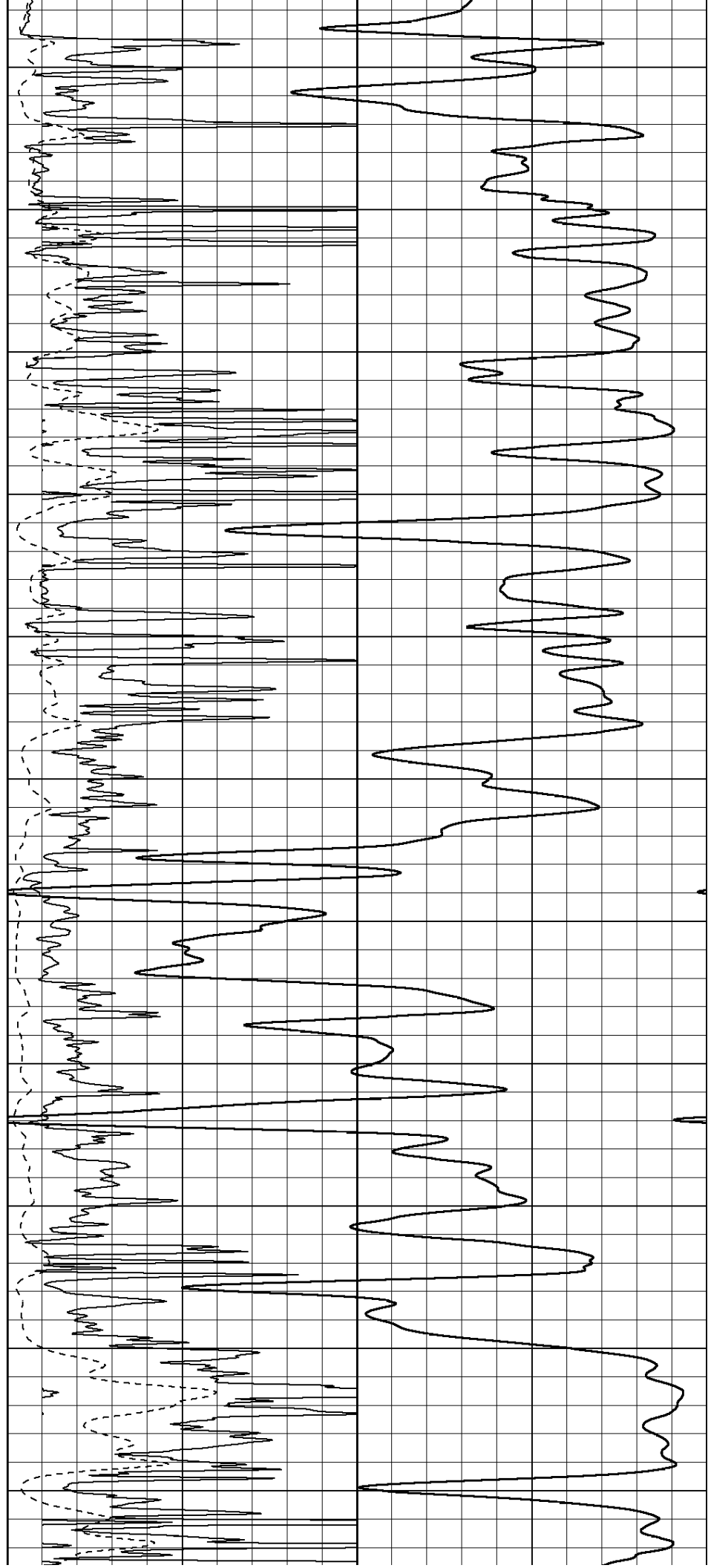
4050

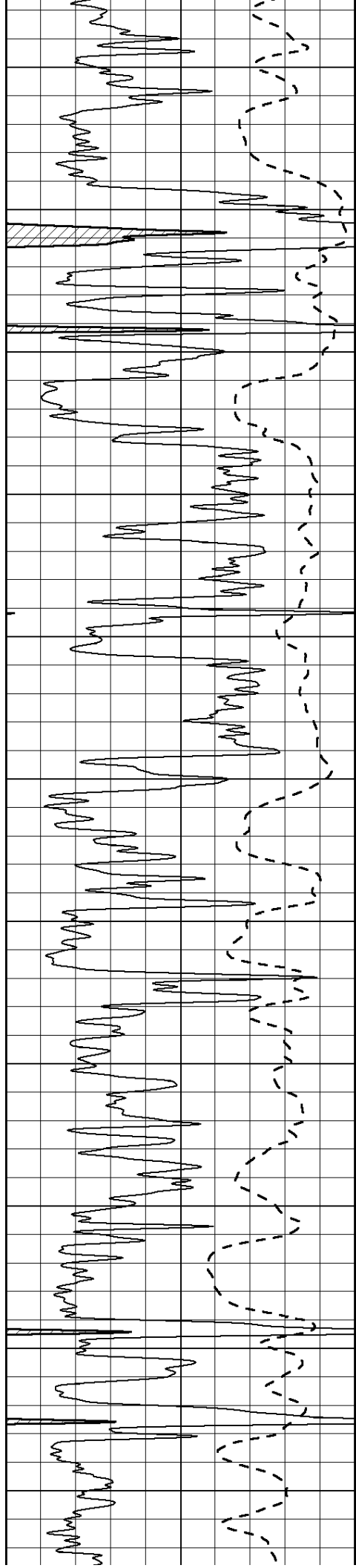
4100

4150

4200

4250





4300

4350

4400

4450

4500

4550

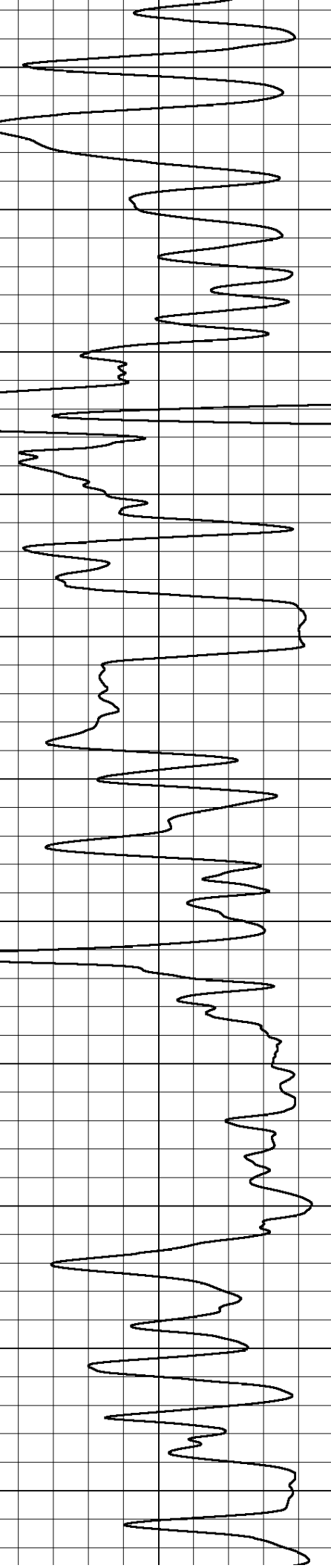
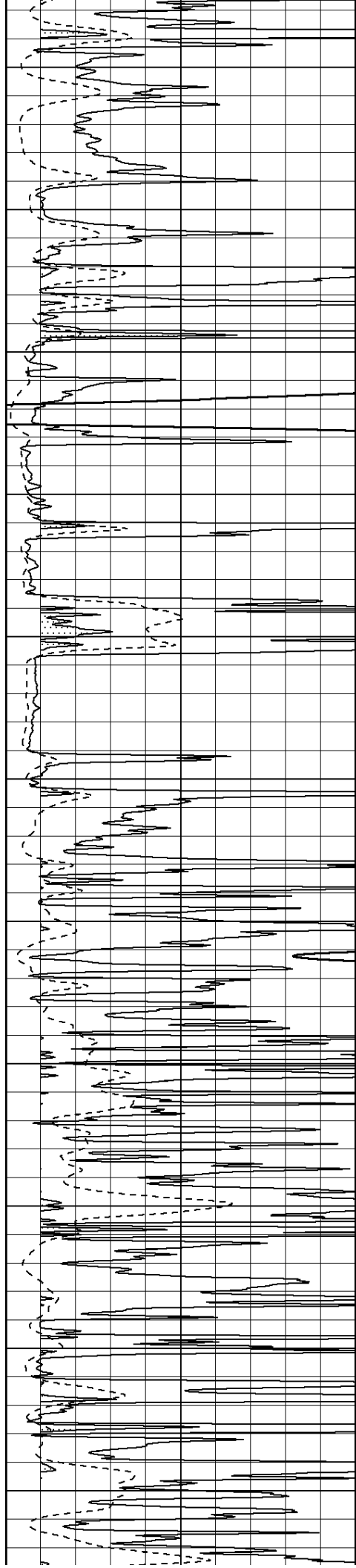
4600

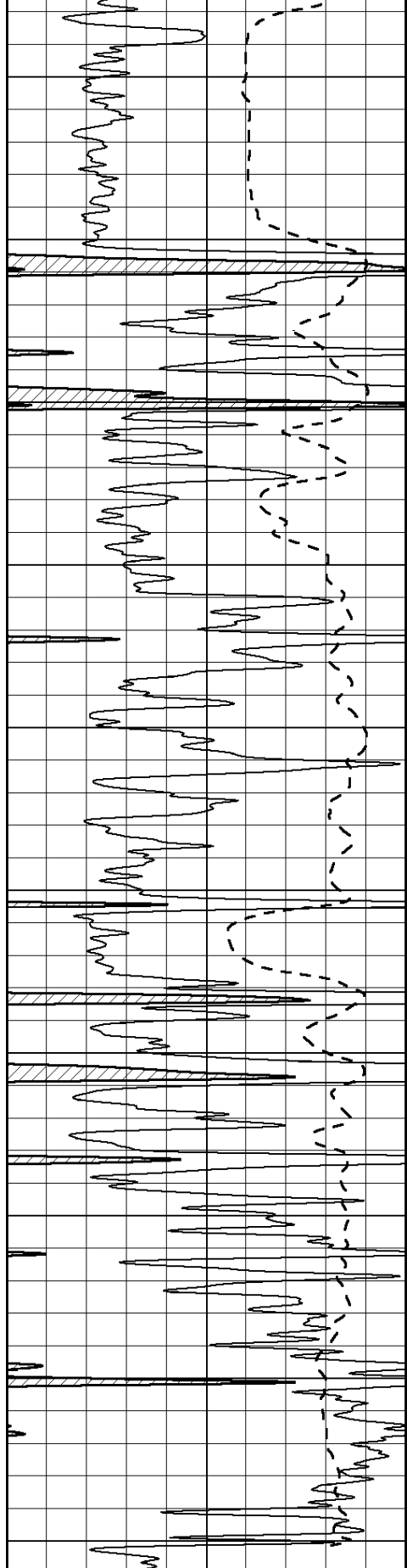
4650

4700

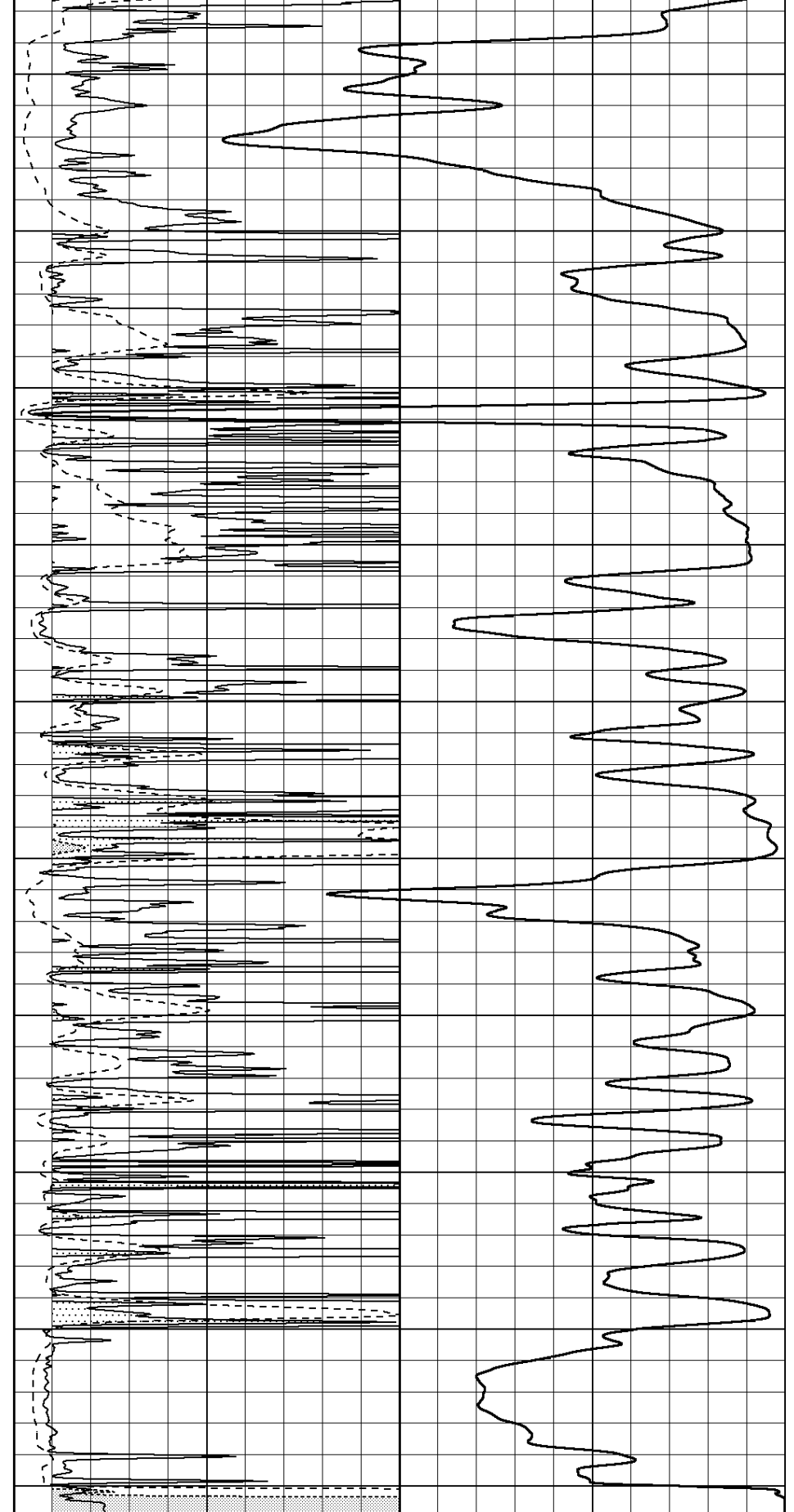
4750

4800





4850
4900
4950
5000
5050
5100
5150
5200
5250
5300



0 Gamma Ray (GAPI) 150
-100 SP (mV) 100

0 RLL3 (Ohm-m) 50
0 RILD (Ohm-m) 50
1000 CILD (mmho/m) 0

50 RILD X10 (Ohm-m) 500
50 RLL3 X10 (Ohm-m) 500



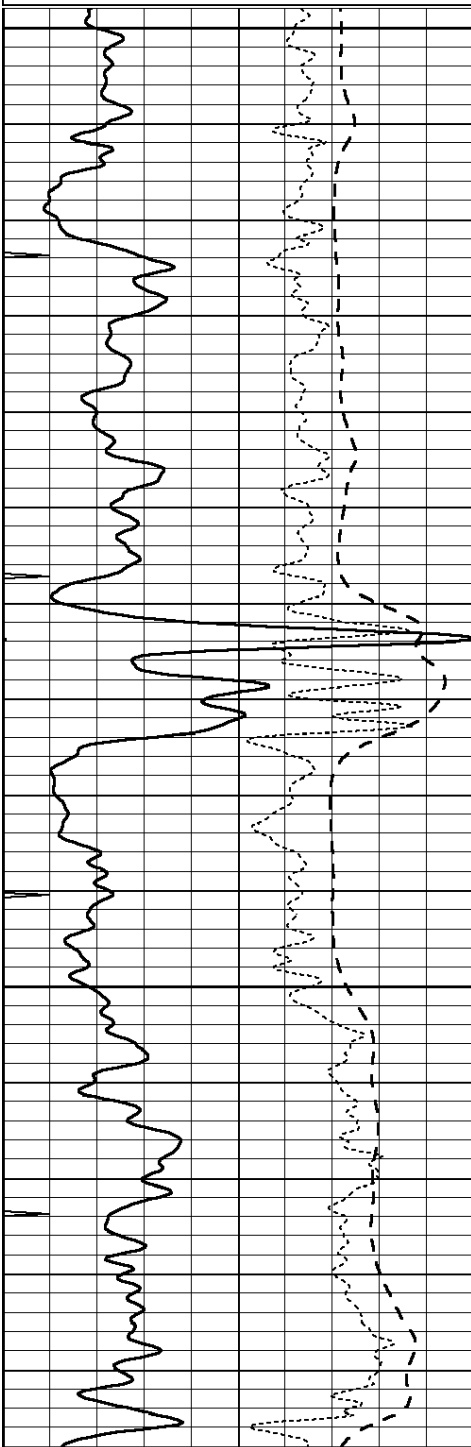
SUPERIOR
Hays,
Kansas

MAIN SECTION

Database File: 006622pe.db
Dataset Pathname: pass3.6
Presentation Format: dil
Dataset Creation: Sun Mar 27 11:36:53 2011
Charted by: Depth in Feet scaled 1:240

| | | |
|------|------------------|-----|
| 0 | GAMMA RAY (GAPI) | 150 |
| -100 | SP (mV) | 100 |
| -250 | Rxo/Rt | 50 |
| 0 | MINMK | 10 |

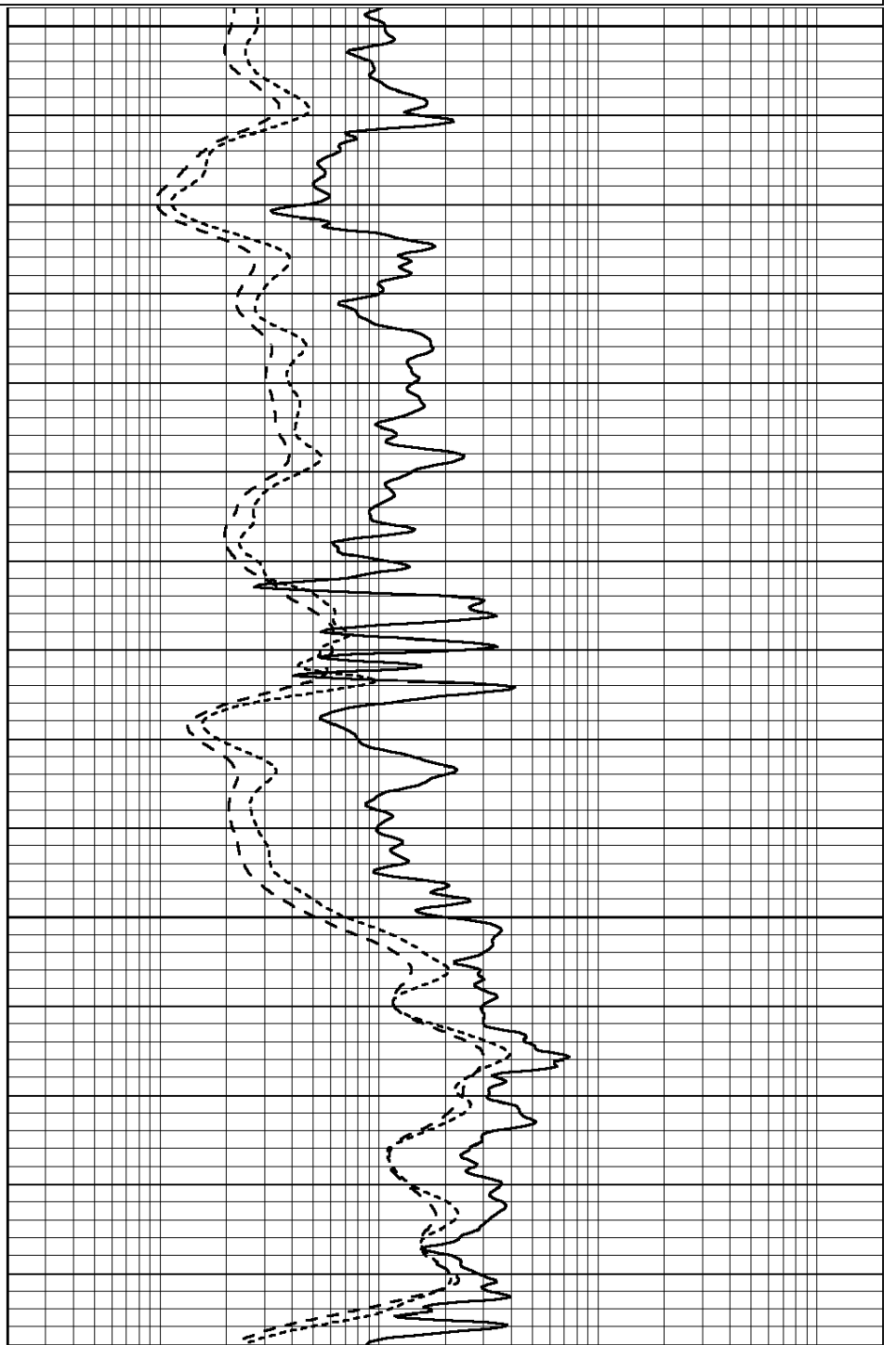
| | | |
|-----|--------------------------|------|
| 0.2 | SHALLOW GUARD (Ohm-m) | 2000 |
| 0.2 | DEEP INDUCTION (Ohm-m) | 2000 |
| 0.2 | MEDIUM INDUCTION (Ohm-m) | 2000 |

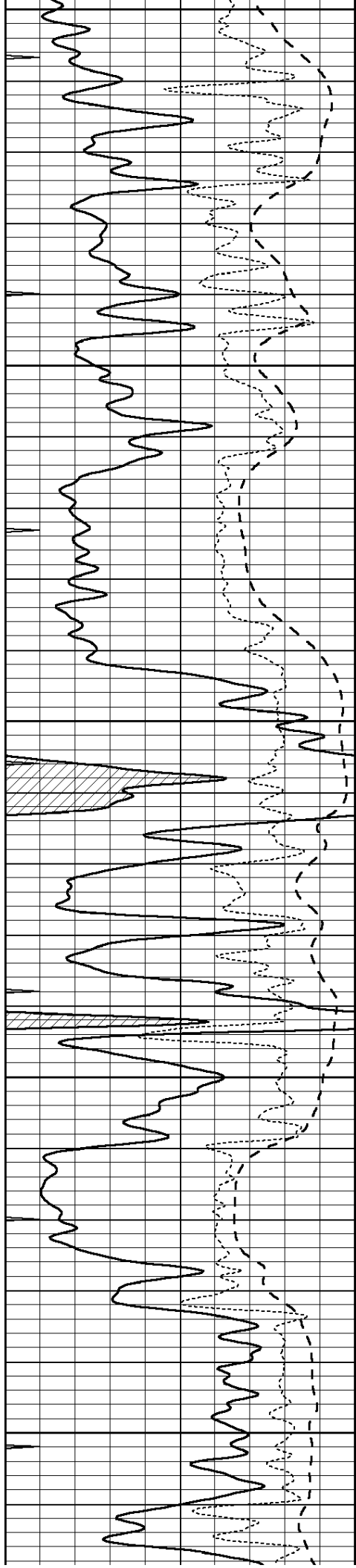


4100

4150

4200





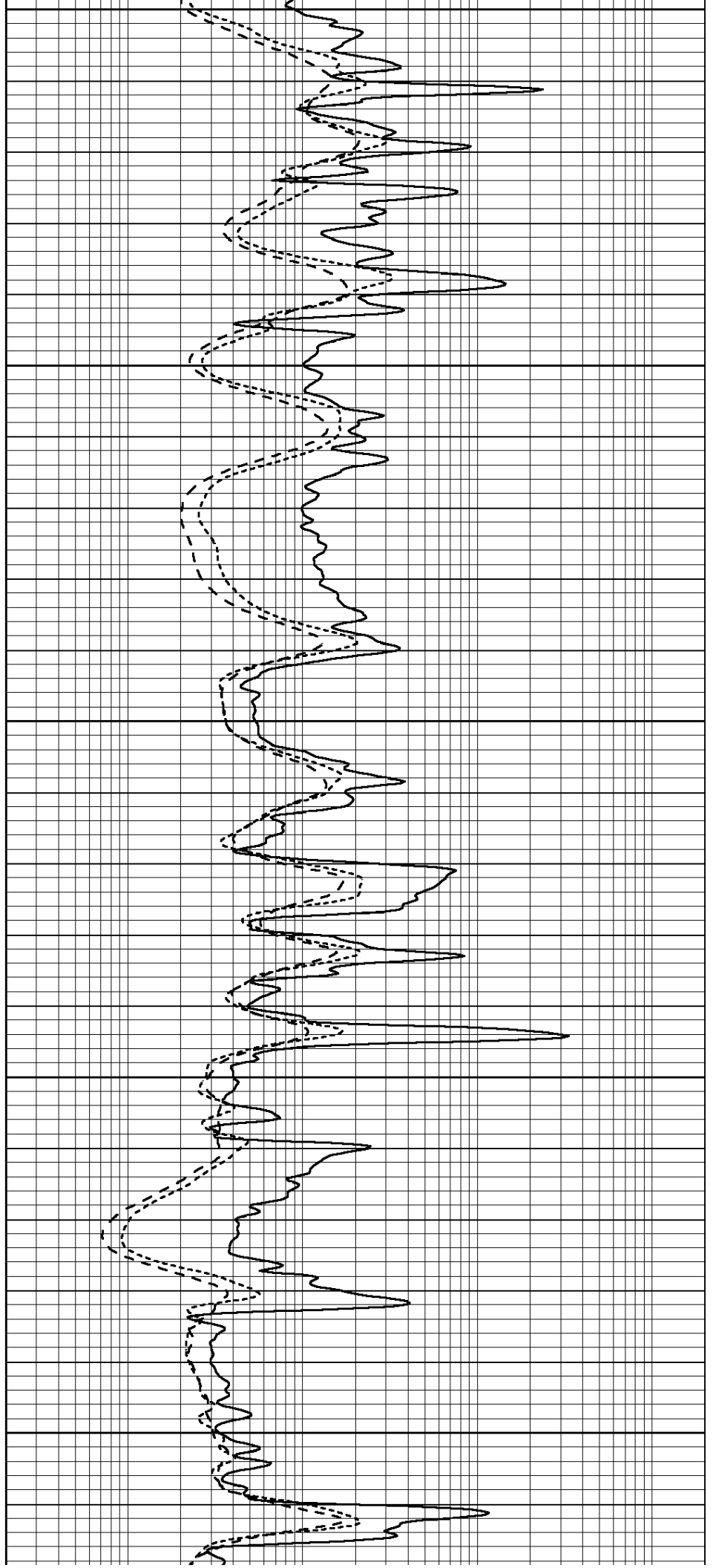
4250

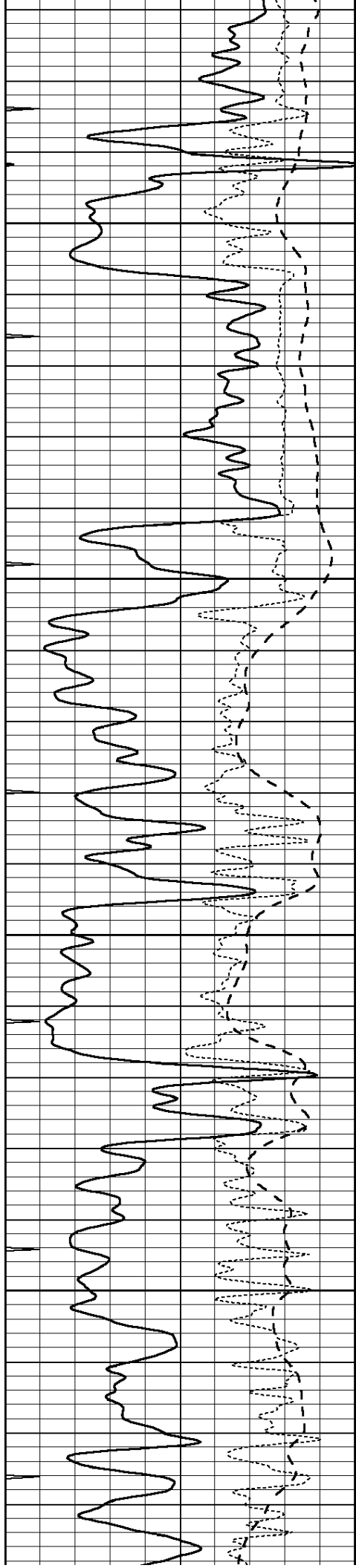
4300

4350

4400

4450



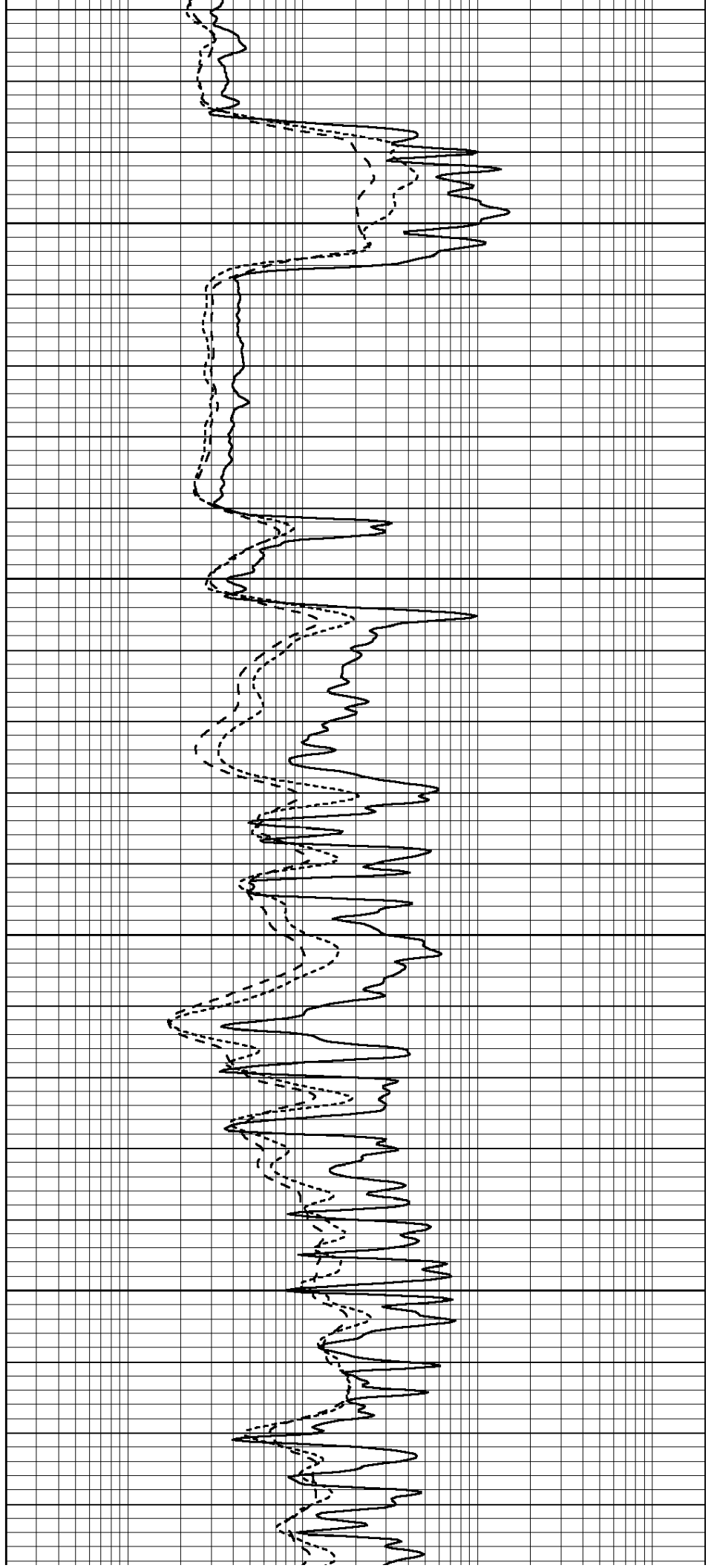


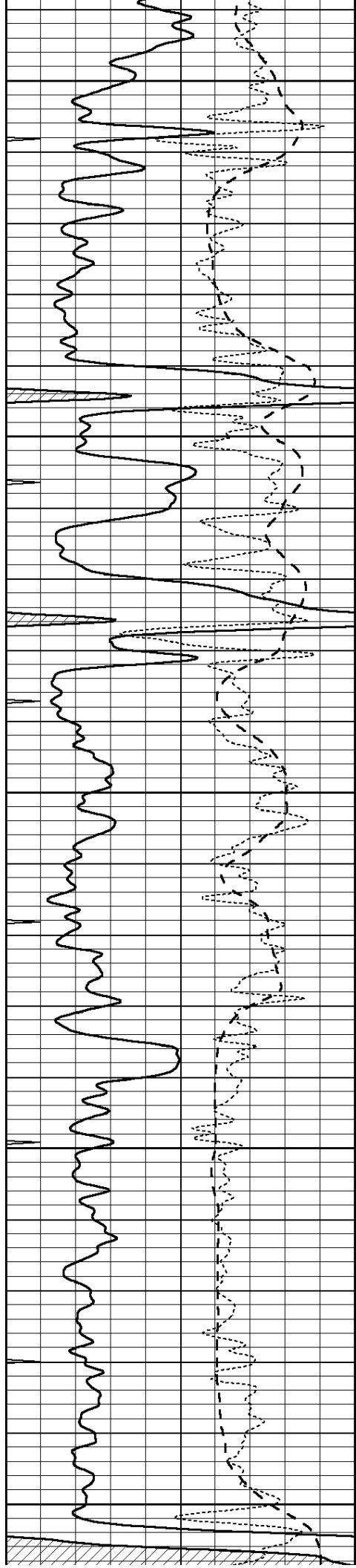
4500

4550

4600

4650





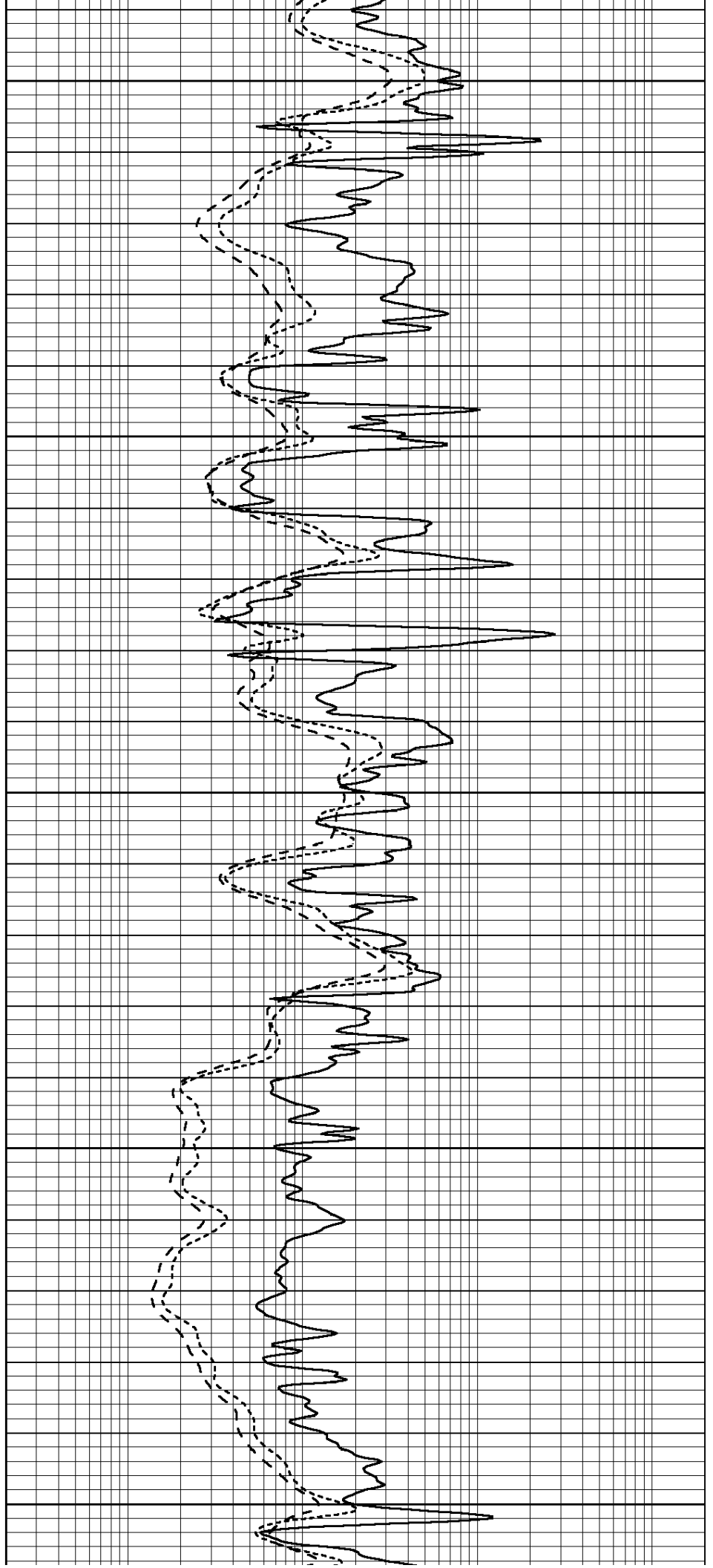
4700

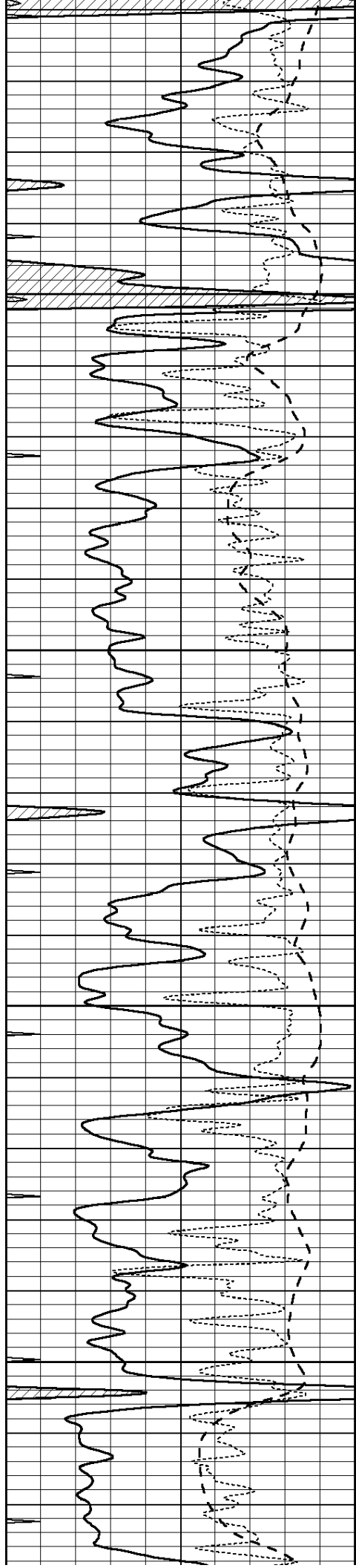
4750

4800

4850

4900



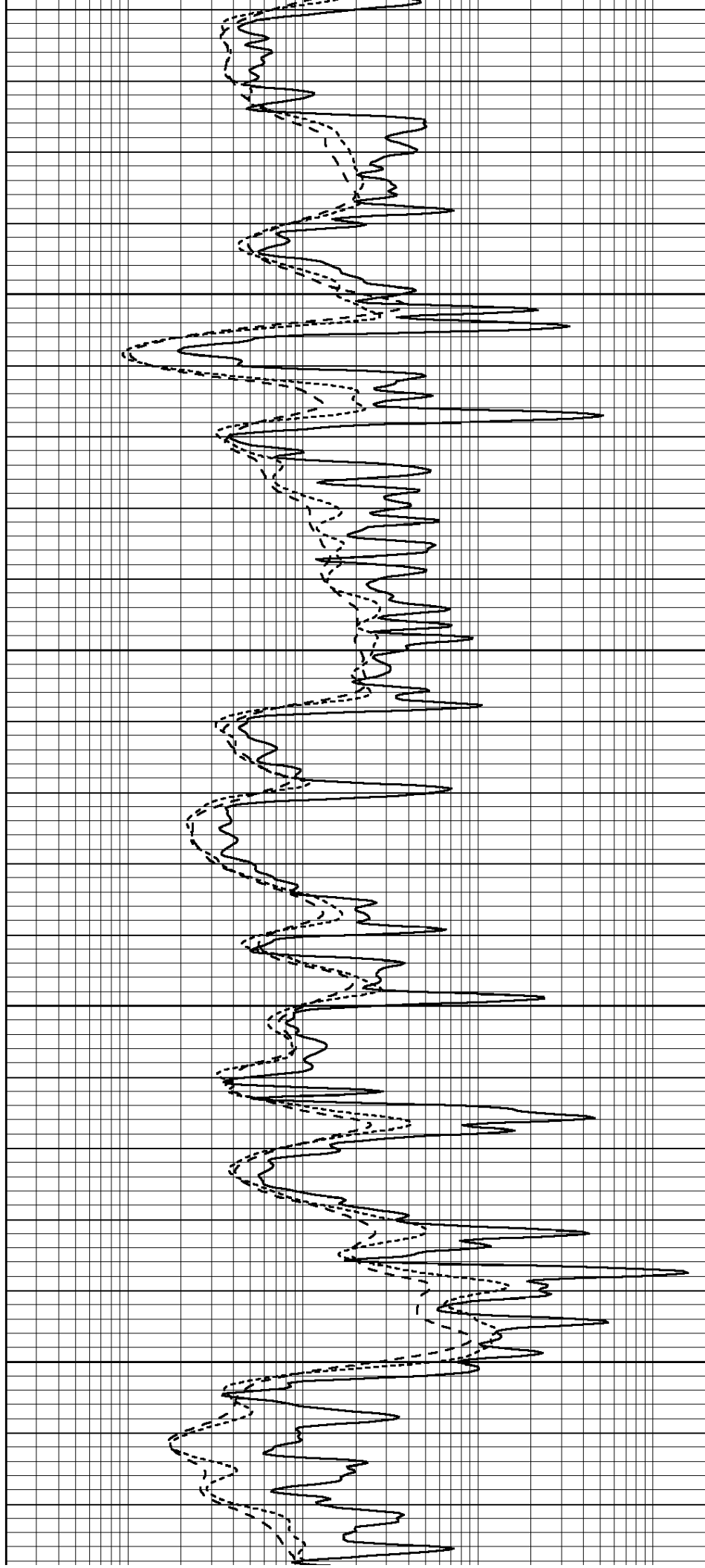


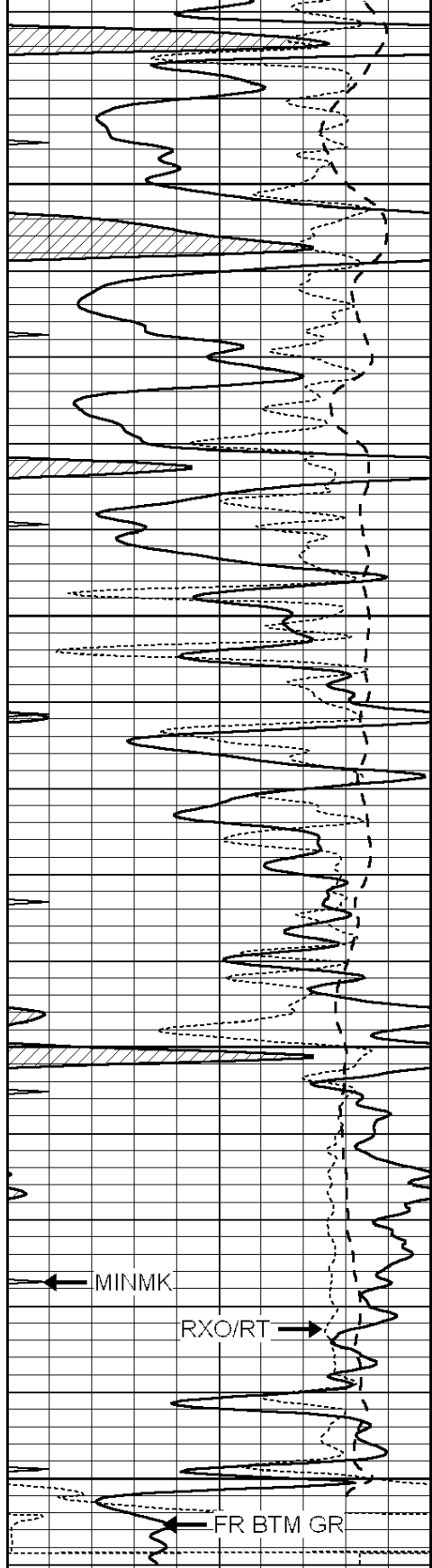
4950

5000

5050

5100





5150

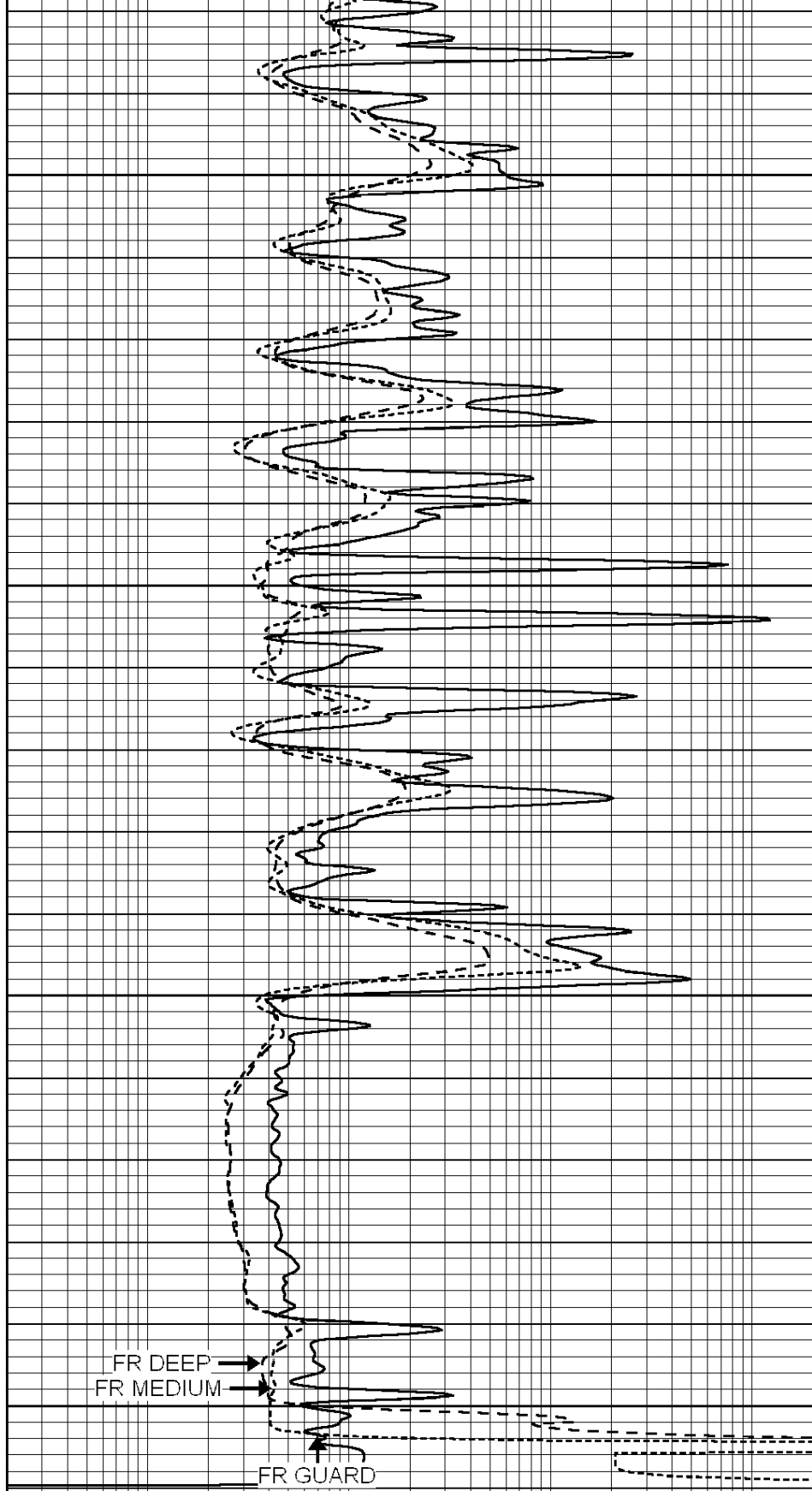
5200

5250

5300

LTD 5306

| | | |
|------|------------------|-----|
| 0 | GAMMA RAY (GAPI) | 150 |
| -100 | SP (mV) | 100 |
| -250 | Rxo/Rt | 50 |
| 0 | MINMK | 10 |



| | | |
|-----|--------------------------|------|
| 0.2 | SHALLOW GUARD (Ohm-m) | 2000 |
| 0.2 | DEEP INDUCTION (Ohm-m) | 2000 |
| 0.2 | MEDIUM INDUCTION (Ohm-m) | 2000 |



SUPERIOR

DEPTH SECTION



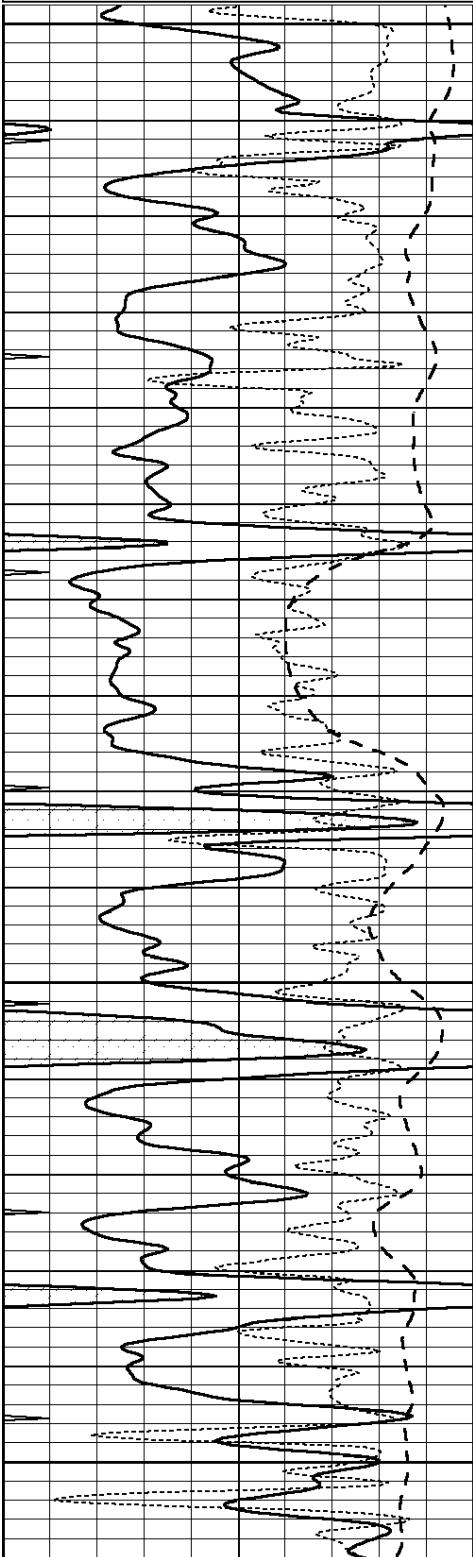
Hays,
Kansas

REPEAT SECTION

Database File: 006622pe.db
 Dataset Pathname: pass2.3
 Presentation Format: dil
 Dataset Creation: Sun Mar 27 08:57:19 2011 by Calc Open-Cased 090629
 Charted by: Depth in Feet scaled 1:240

| | | |
|------|------------------|-----|
| 0 | GAMMA RAY (GAPI) | 150 |
| -100 | SP (mV) | 100 |
| -250 | Rxo/Rt | 50 |
| 0 | MINMK | 10 |

| | | |
|-----|--------------------------|------|
| 0.2 | SHALLOW GUARD (Ohm-m) | 2000 |
| 0.2 | DEEP INDUCTION (Ohm-m) | 2000 |
| 0.2 | MEDIUM INDUCTION (Ohm-m) | 2000 |

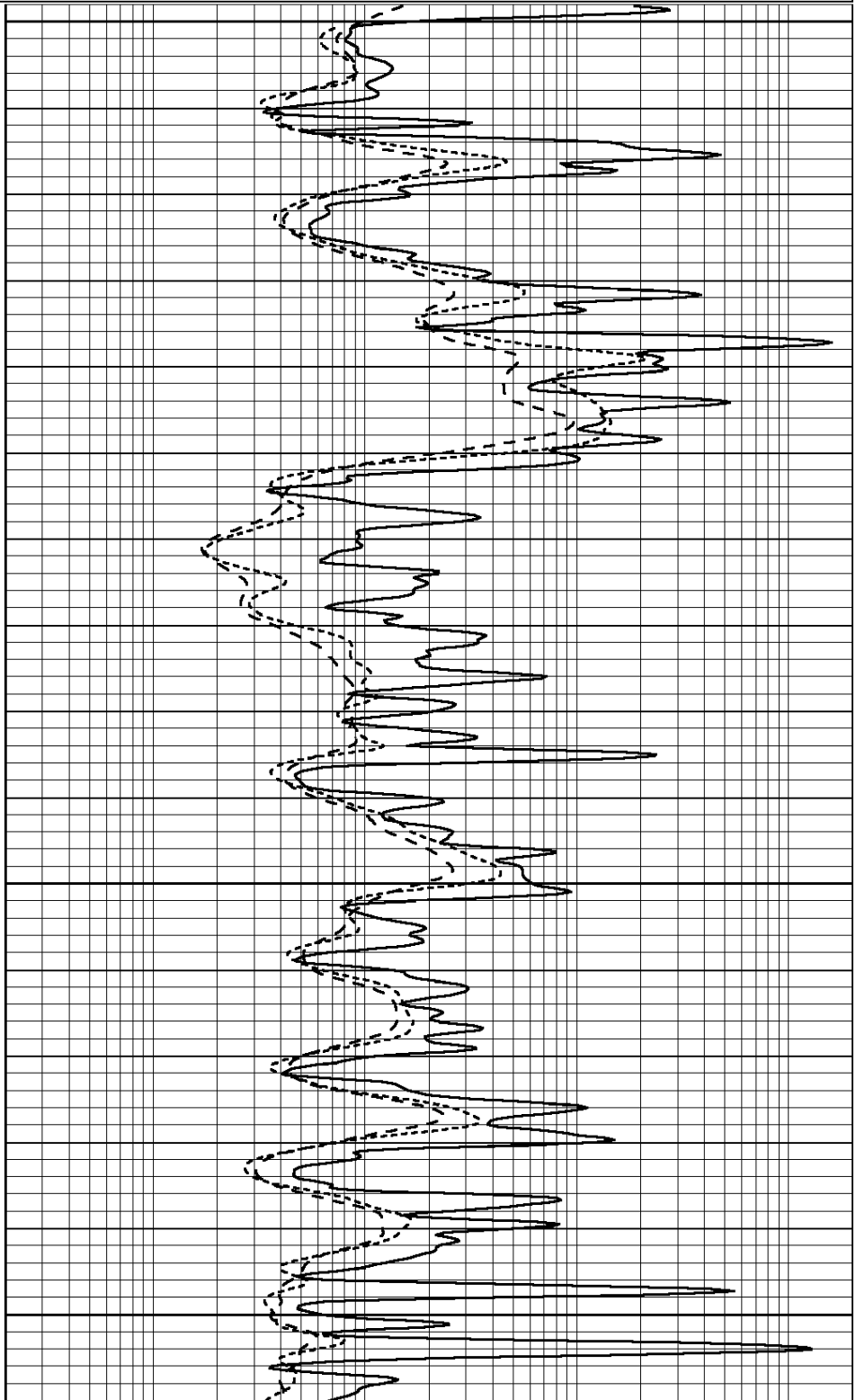


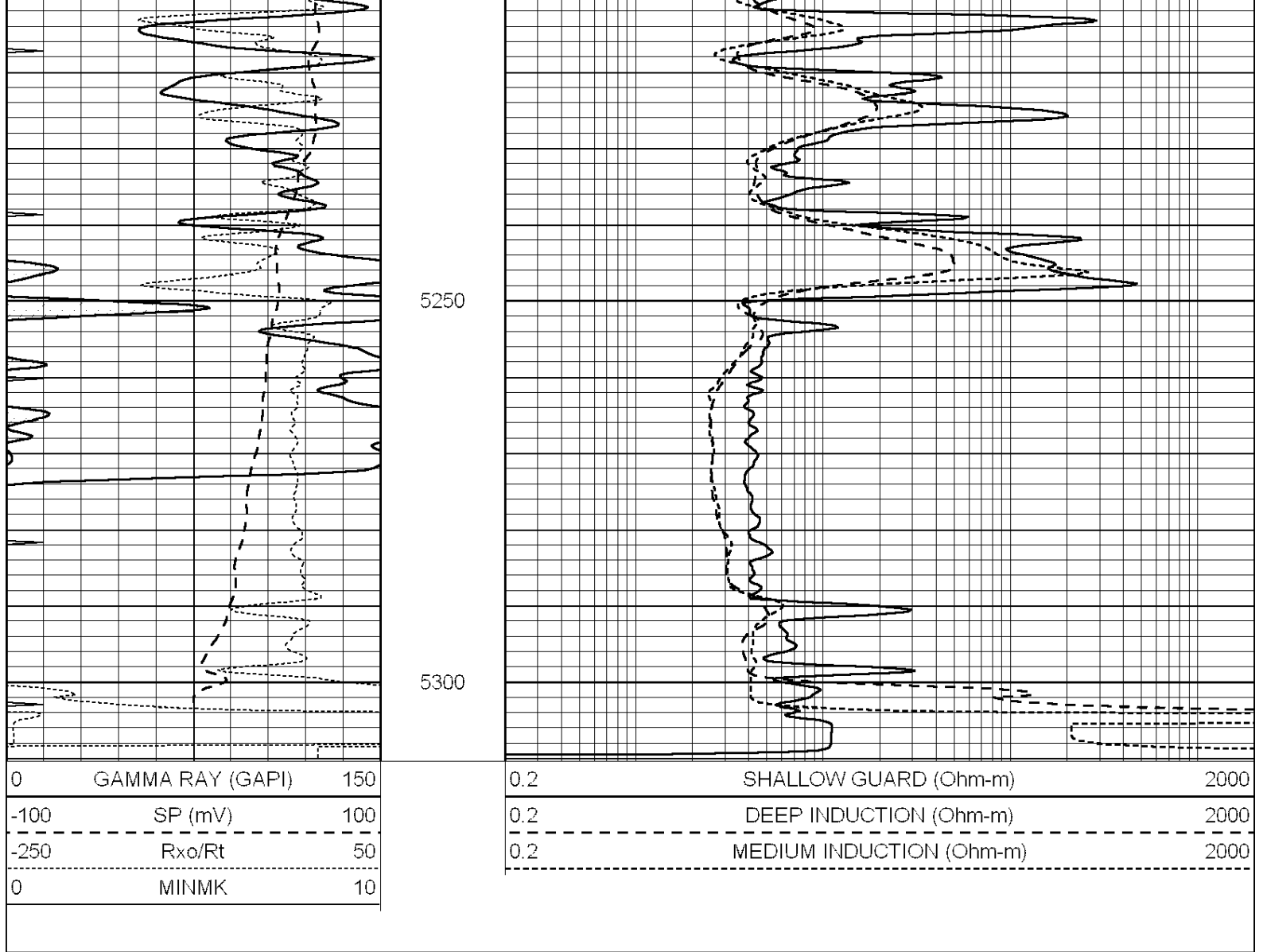
5050

5100

5150

5200





Calibration Report

Database File: 006622pe.db
 Dataset Pathname: pass3.6
 Dataset Creation: Sun Mar 27 11:36:53 2011

Dual Induction Calibration Report

Serial-Model: DIL6-GEAR
 Performed: Sat Mar 26 20:41:51 2011

| Loop: | Readings | | | References | | | Results | |
|-----------|----------|-------|---|------------|---------|--------|---------|---------|
| | Air | Loop | | Air | Loop | | m | b |
| Deep | 0.001 | 0.644 | V | 0.000 | 400.000 | mmho/m | 660.000 | -5.000 |
| Medium | 0.020 | 0.738 | V | 0.000 | 462.500 | mmho/m | 740.000 | -23.000 |
| Internal: | Zero | Cal | | Zero | Cal | | m | b |
| Deep | 0.000 | 1.000 | V | 0.000 | 1.000 | mmho/m | 1.000 | 0.000 |
| Medium | 0.000 | 1.000 | V | 0.000 | 1.000 | mmho/m | 1.000 | 0.000 |

Litho Density Calibration Report
 Serial: 006 Model: PRB
 Performed Sun Aug 15 09:48:41 2010

| | Background | Magnesium | Aluminum | Sandstone | |
|-------------|------------|-----------|----------|-----------|------|
| Window 1 | 1686.6 | 11612.8 | 3932.0 | 12718.8 | cps |
| Window 2 | 1531.4 | 9204.7 | 3267.8 | 9851.9 | cps |
| Window 3 | 1198.3 | 4733.6 | 1952.5 | 4920.6 | cps |
| Window 4 | 317.3 | 321.2 | 325.9 | 303.6 | cps |
| Long Space | 0.0 | 7673.3 | 1736.4 | 8320.4 | cps |
| Short Space | 1.7 | 2548.5 | 1657.2 | 2628.8 | cps |
| Rho | | 1.7100 | 2.5900 | 1.3800 | g/cc |
| Pe | | | 2.5700 | 1.5500 | |

| | | | | | |
|-------------|--------|-------------|---------|---------------------|---------|
| Rib Angle | : 43.8 | Rib Slope | : 0.961 | Density/Spine Ratio | : 0.569 |
| Spine Angle | : 73.8 | Spine Slope | : 3.453 | Spine Intercept | : -18.1 |

| | | | | |
|----------|-----------|-----------|--------------|--|
| Caliper | | | | |
| Low Ref | Readings | Reference | | |
| High Ref | 4.0 | 6.7 | | |
| | 6.2 | 14.0 | | |
| | Gain: 3.2 | | Offset: -6.2 | |

Compensated Neutron Calibration Report

| | |
|----------------|--------|
| Serial Number: | NEU_4I |
| Tool Model: | G |

CALIBRATION

| Detector | Readings | Target | Normalization |
|-------------|------------|-------------|---------------|
| Short Space | 996.00 cps | 1000.00 cps | 1.0000 |
| Long Space | 977.00 cps | 1000.00 cps | 1.0000 |

Gamma Ray Calibration Report

| | |
|---------------------|--------------------------|
| Serial Number: | GR4 |
| Tool Model: | OPEN |
| Performed: | Sun Mar 27 08:30:25 2011 |
| Calibrator Value: | 200.0 GAPI |
| Background Reading: | 0.0 cps |
| Calibrator Reading: | 189.0 cps |
| Sensitivity: | 1.4000 GAPI/cps |