



SUPERIOR
Hays,
Kansas

SONIC
LOG

Company VINCENT OIL CORPORATION
Well STIMPERT #1-7
Field KINGSDOWN NORTHWEST
County FORD
State KANSAS

Company VINCENT OIL CORPORATION
Well STIMPERT #1-7
Field KINGSDOWN NORTHWEST
County FORD State KANSAS

Location: API # : 15-057-20720-0000
285' FNL & 2105' FEL
NE - NW - NW - NE
SEC 7 TWP 29S RGE 22W
Permanent Datum GROUND LEVEL Elevation 2512
Log Measured From KELLY BUSHING 12' A.G.L.
Drilling Measured From KELLY BUSHING
Other Services
CDL/CNL/PE
DIL/MEL
Elevation
K.B. 2524
D.F. 2522
G.L. 2512

Date	3/27/11
Run Number	TWO
Depth Driller	5301
Depth Logger	5306
Bottom Logged Interval	5293
Top Log Interval	650
Casing Driller	8 5/8" @ 696
Casing Logger	697
Bit Size	7 7/8"
Type Fluid in Hole	CHEMICAL MUD
Density / Viscosity	9.4/53
pH / Fluid Loss	10.0/8.8
Source of Sample	FLOWLINE
Rin @ Meas. Temp	.550 @ 70F
Rmf @ Meas. Temp	.413 @ 70F
Rmc @ Meas. Temp	.660 @ 70F
Source of Rmf / Rmc	MEASUREMENT
Rin @ BHT	.301 @ 128F
Time Circulation Stopped	5.5 HOURS
Time Logger on Bottom	8:00 P.M.
Maximum Recorded Temperature	128F
Equipment Number	0836
Location	HAYS, KANSAS
Recorded By	JEFF LUEBBERS
Witnessed By	JIM HALL

<<< Fold Here >>>

All interpretations are opinions based on inferences from electrical or other measurements and we cannot and do not guarantee the accuracy or correctness of any interpretation, and we shall not, except in the case of gross or willful negligence on our part, be liable or responsible for any loss, costs, damages, or expenses incurred or sustained by anyone resulting from any interpretation made by any of our officers, agents or employees. These interpretations are also subject to our general terms and conditions set out in our current Price Schedule.

Comments

THANK YOU FOR USING SUPERIOR WELL SERVICE HAYS, KANSAS (785) 628-6395
DIRECTIONS
KINGSDOWN, KS. & HWY 54, 1N. ON "RD. 125" TO "WILDFIRE RD.", 1/2W., S. INTO

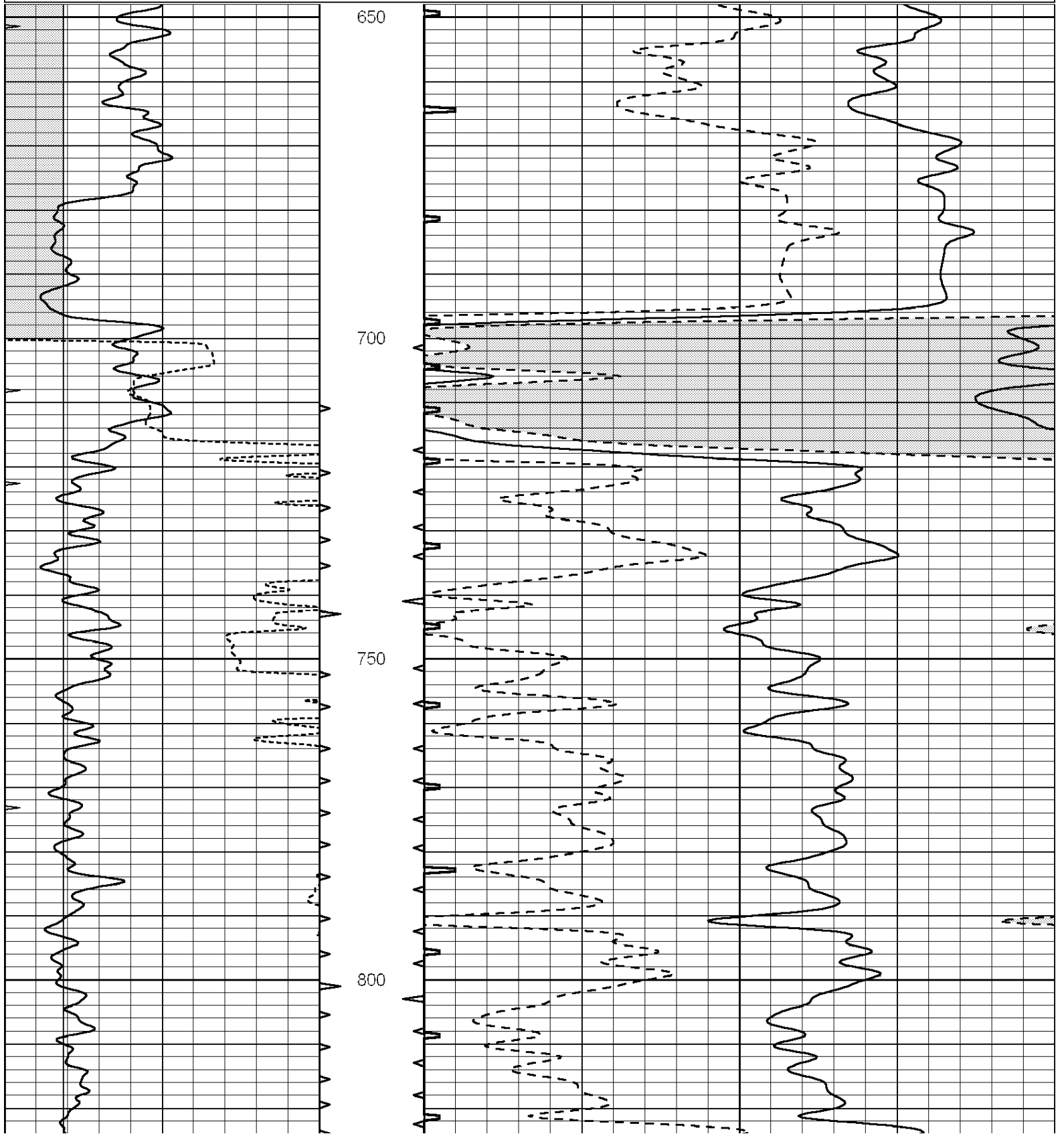


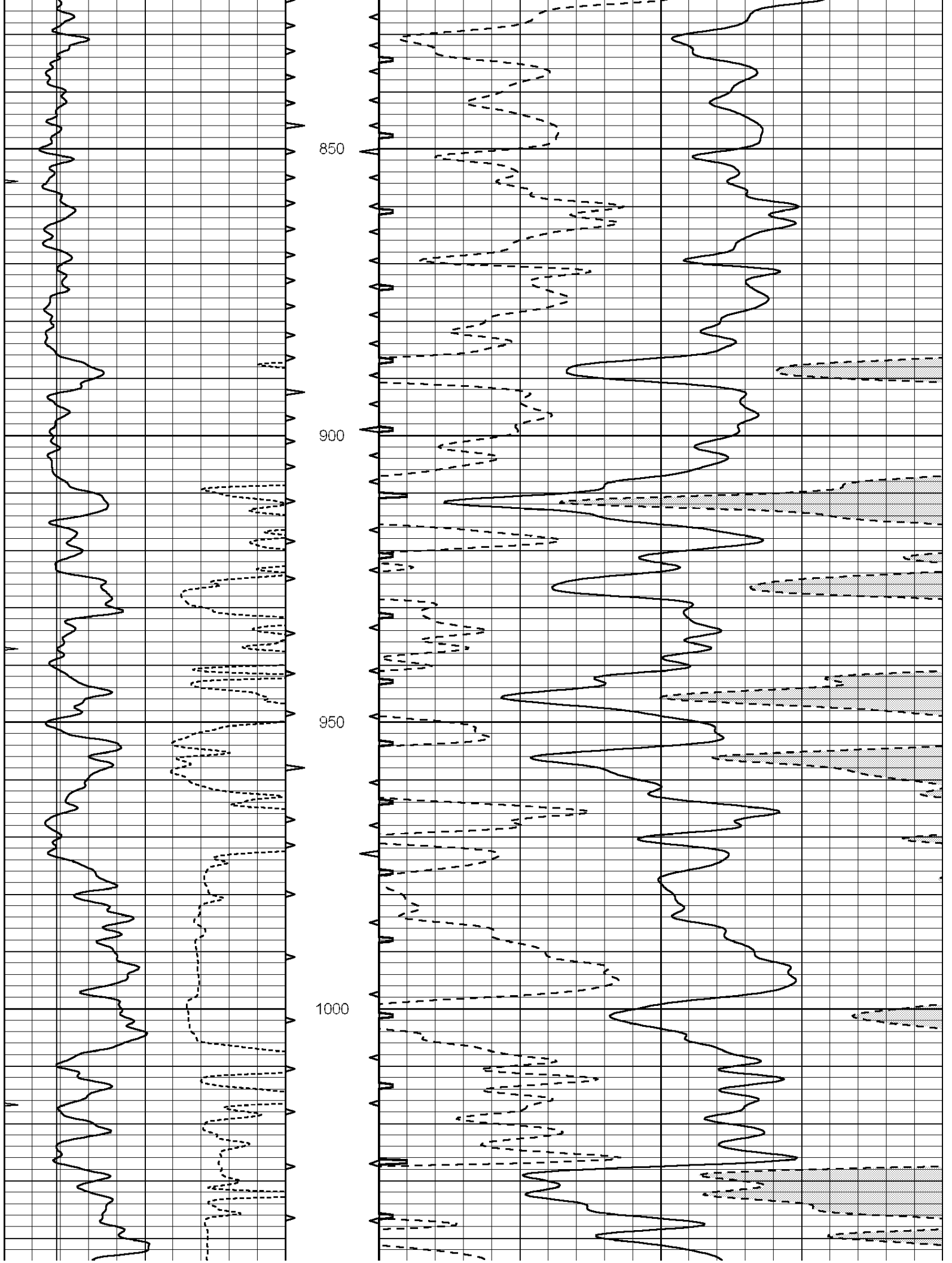
SUPERIOR
Hays,
Kansas

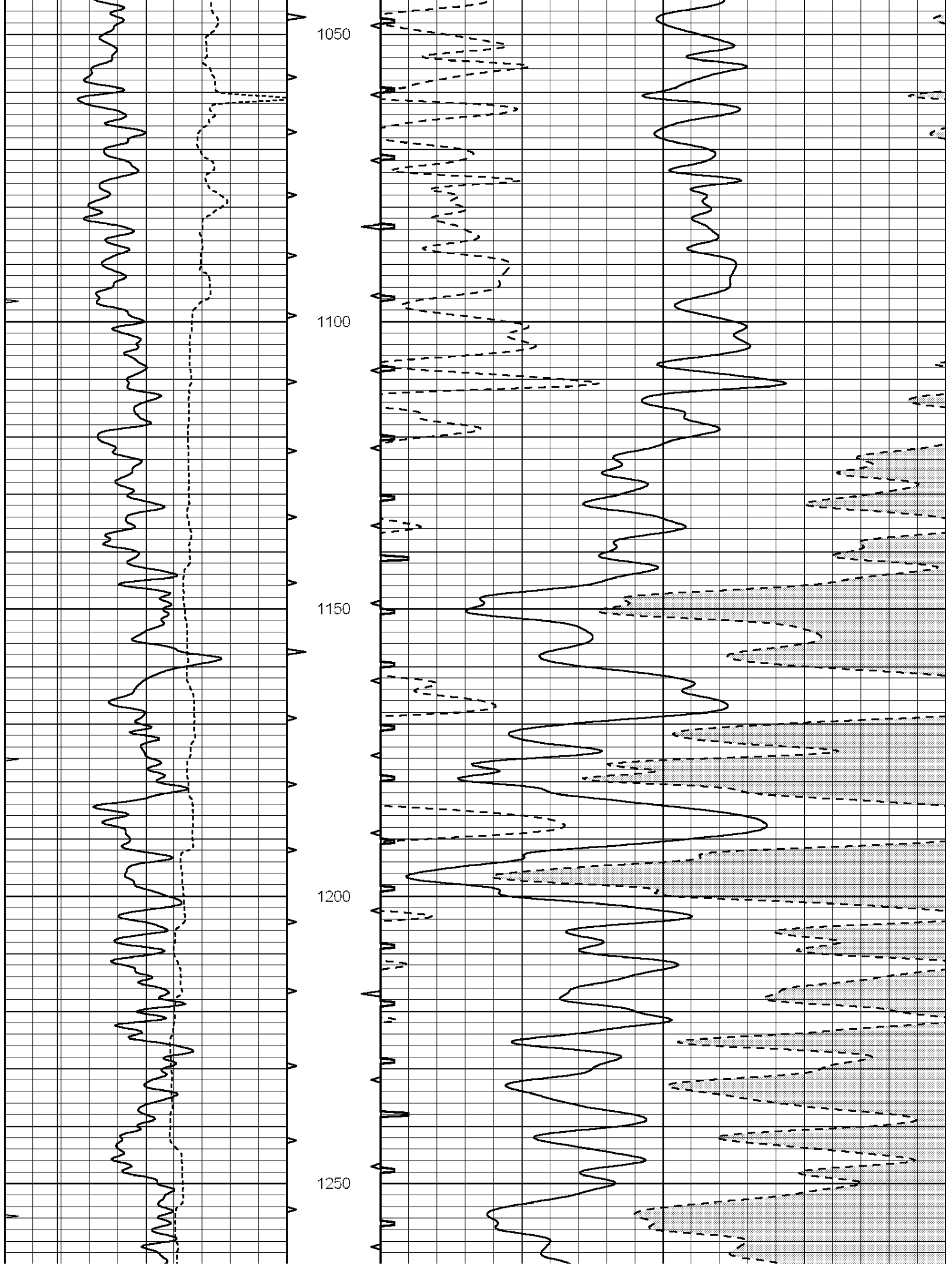
MAIN SECTION

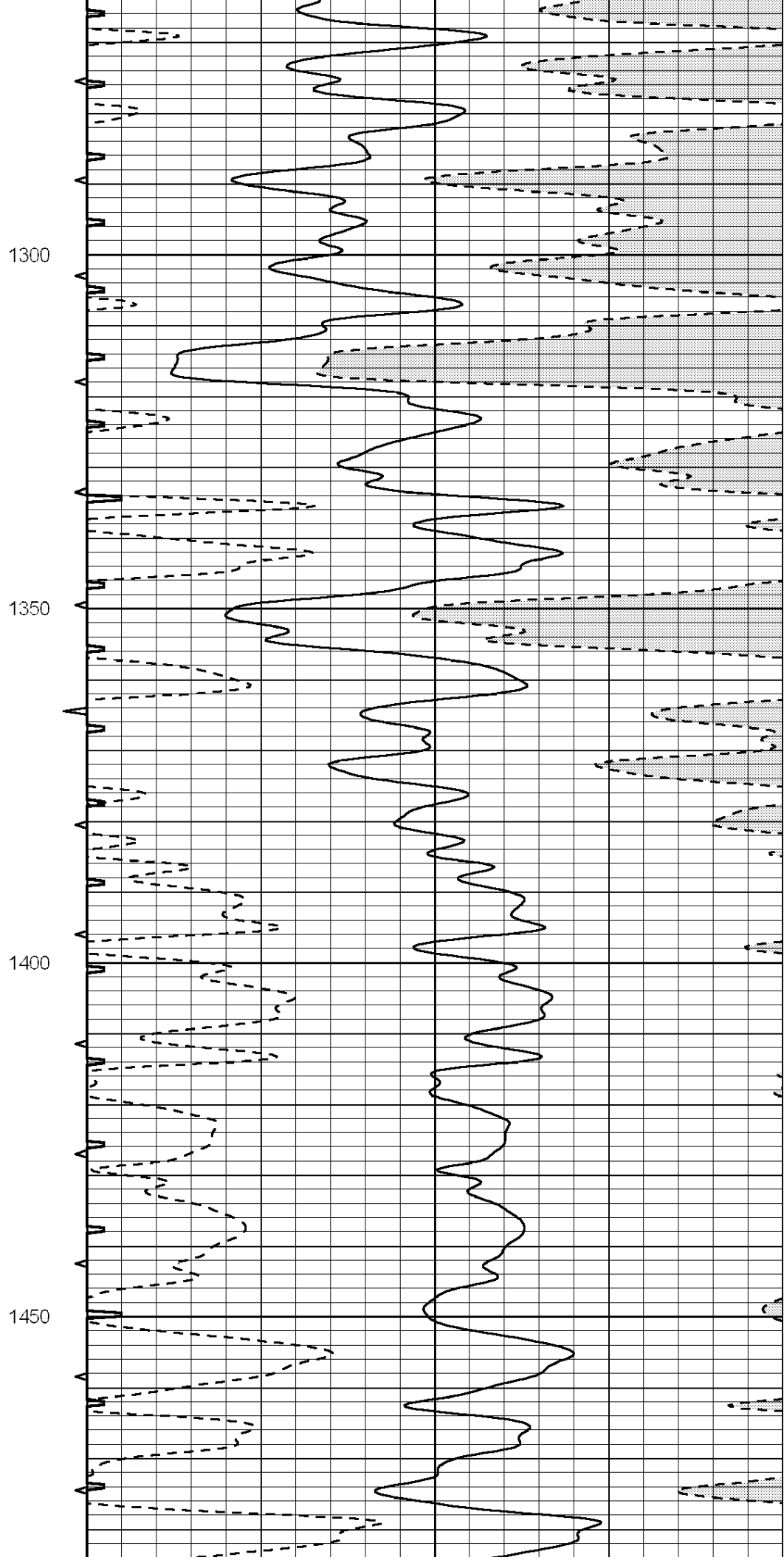
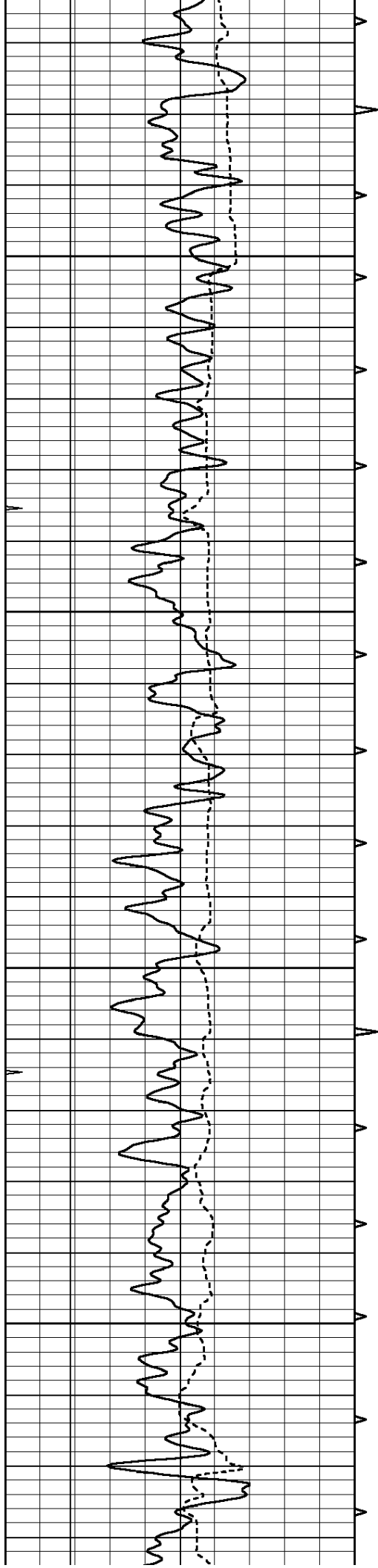
Database File: 006622pe.db
 Dataset Pathname: pass12.7
 Presentation Format: slt
 Dataset Creation: Sun Mar 27 16:47:50 2011
 Charted by: Depth in Feet scaled 1:240

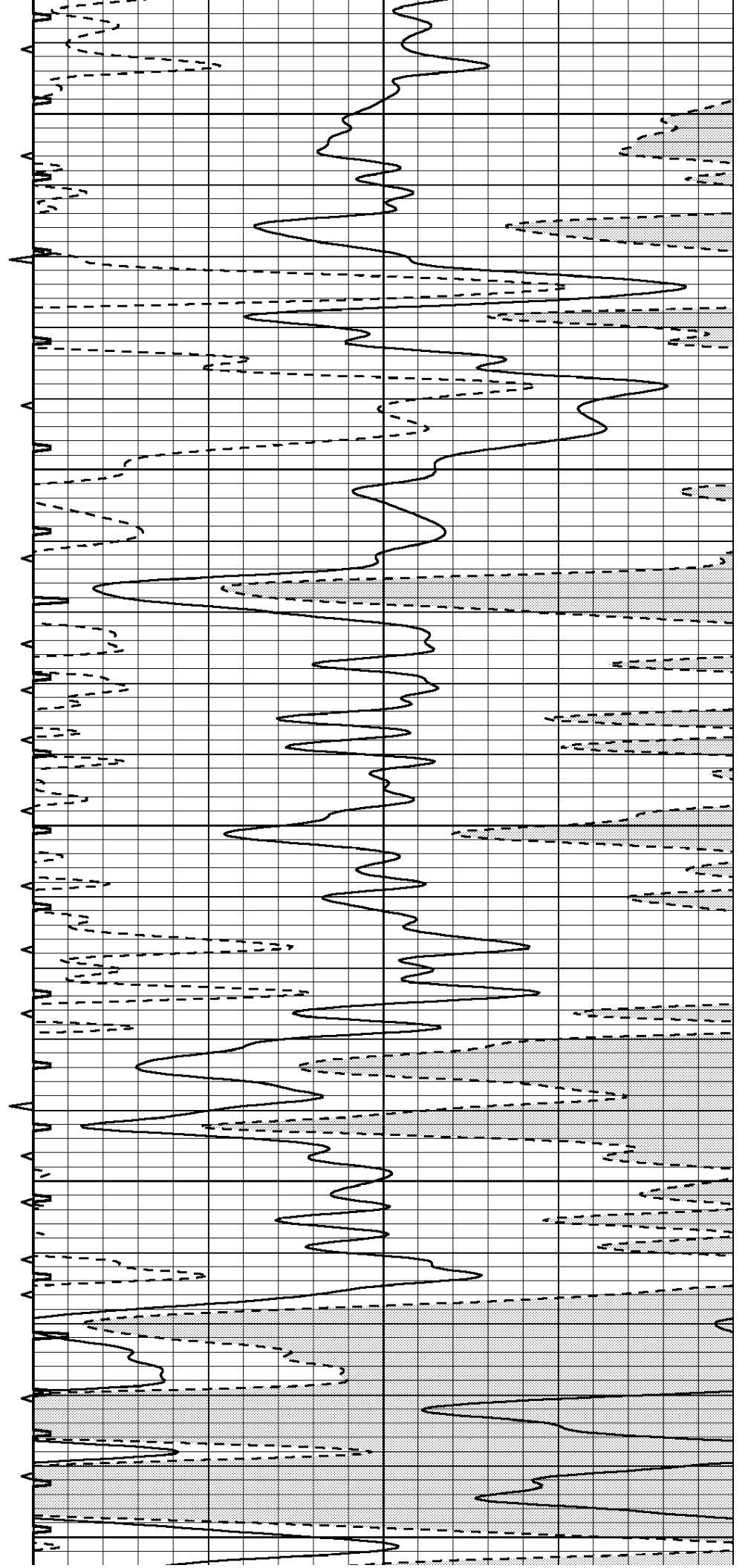
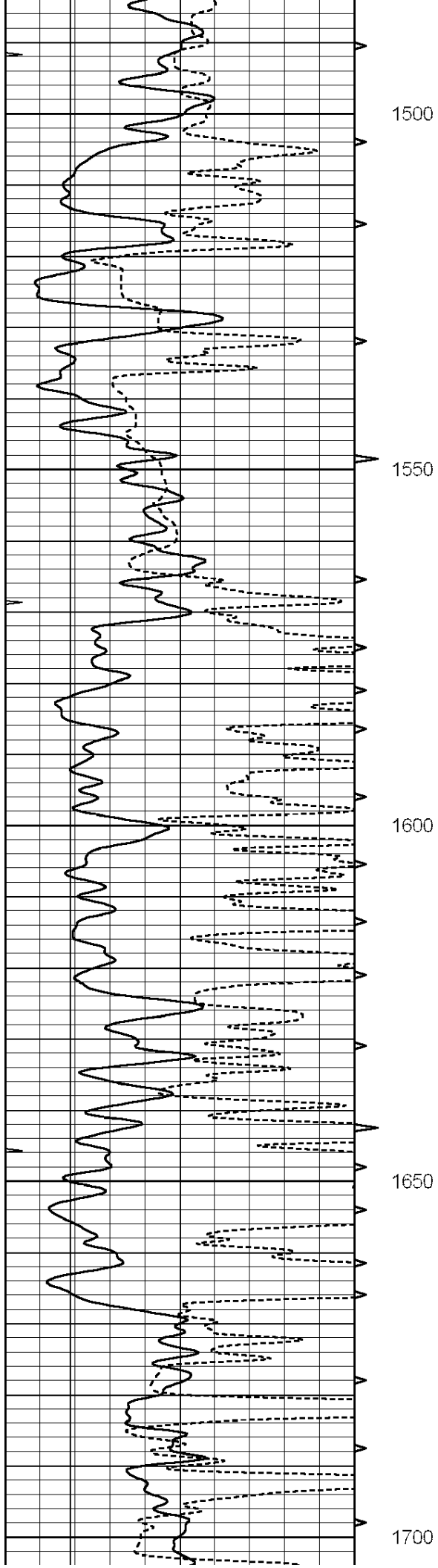
0	GAMMA RAY (GAPI)	150	ABHV	140	DELTA TIME (usec/ft)	40
6	CALIPER (in)	16	10 (ft3)	0	30	SONIC POROSITY (pu)
0	MINMK	20	TBHV	0	ITT (msec)	20
			0 (ft3)	10		

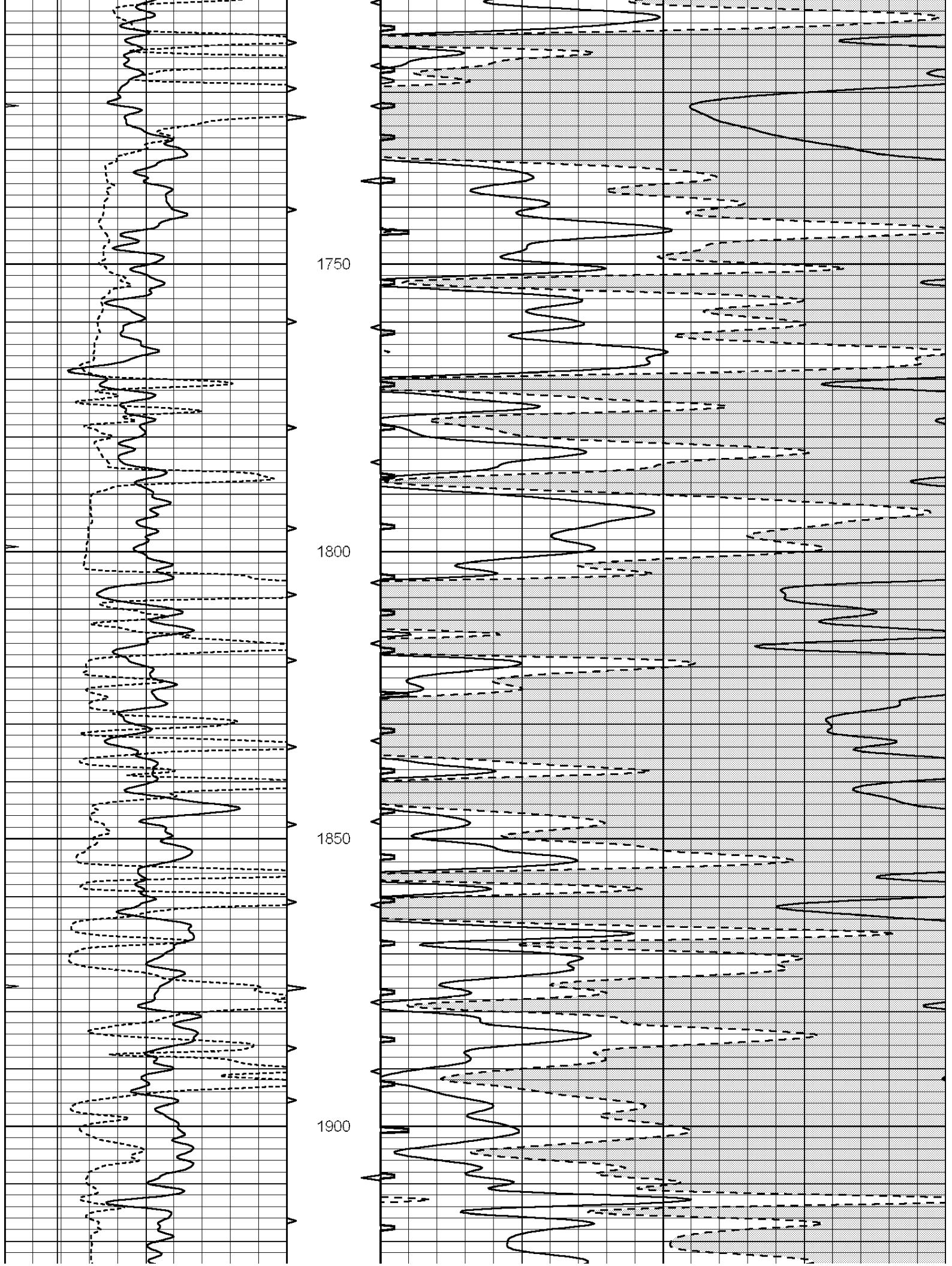


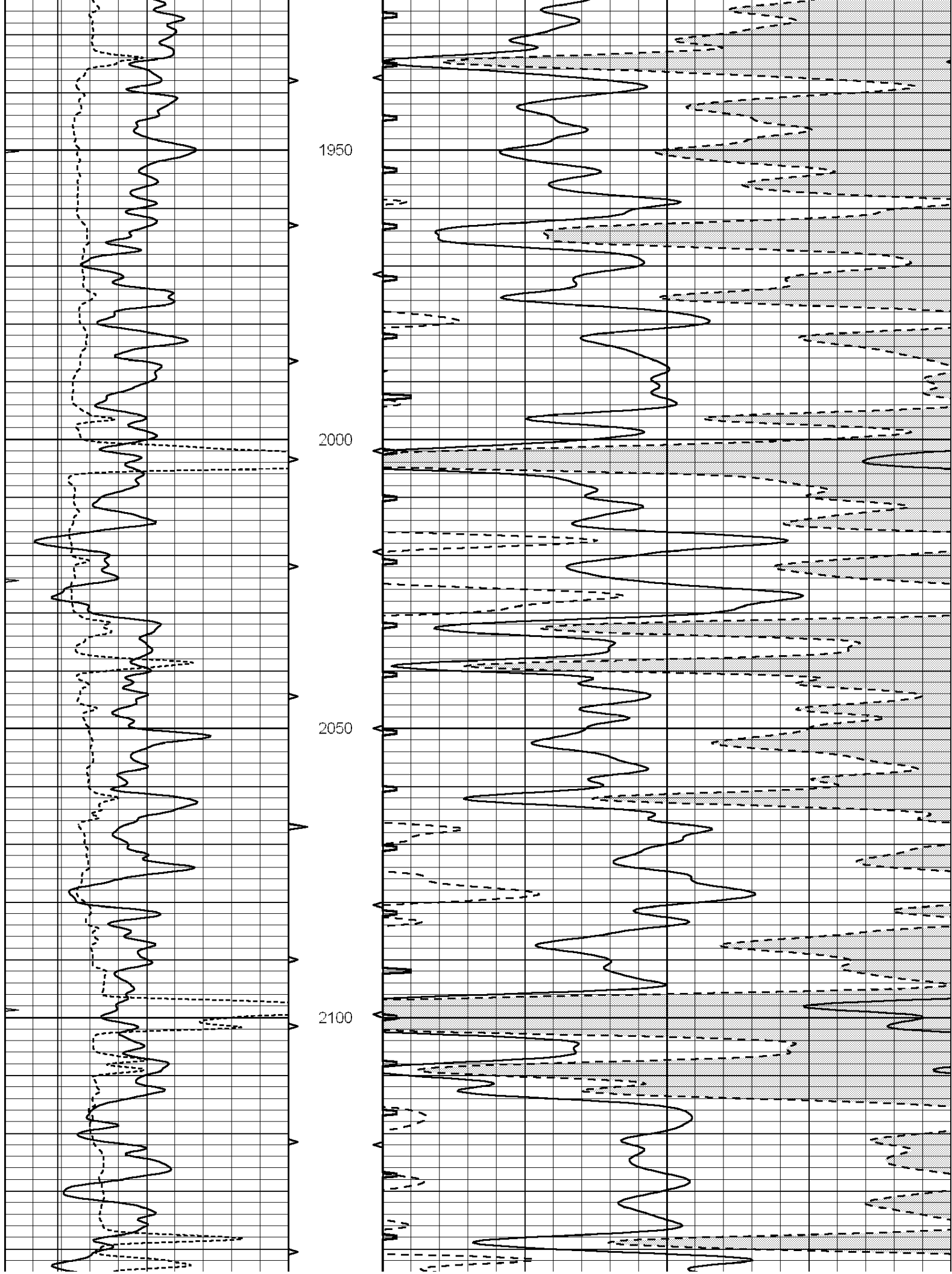


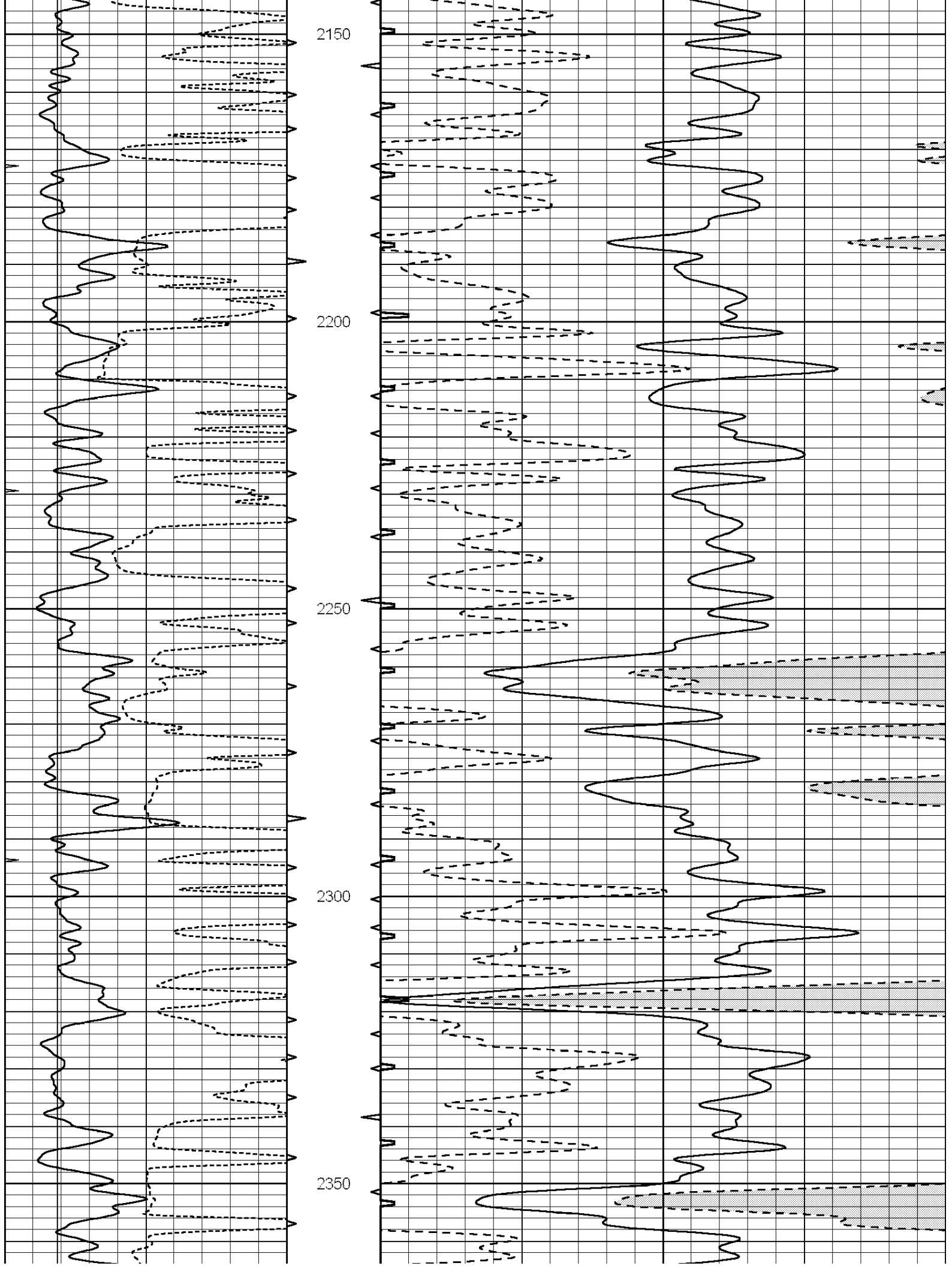


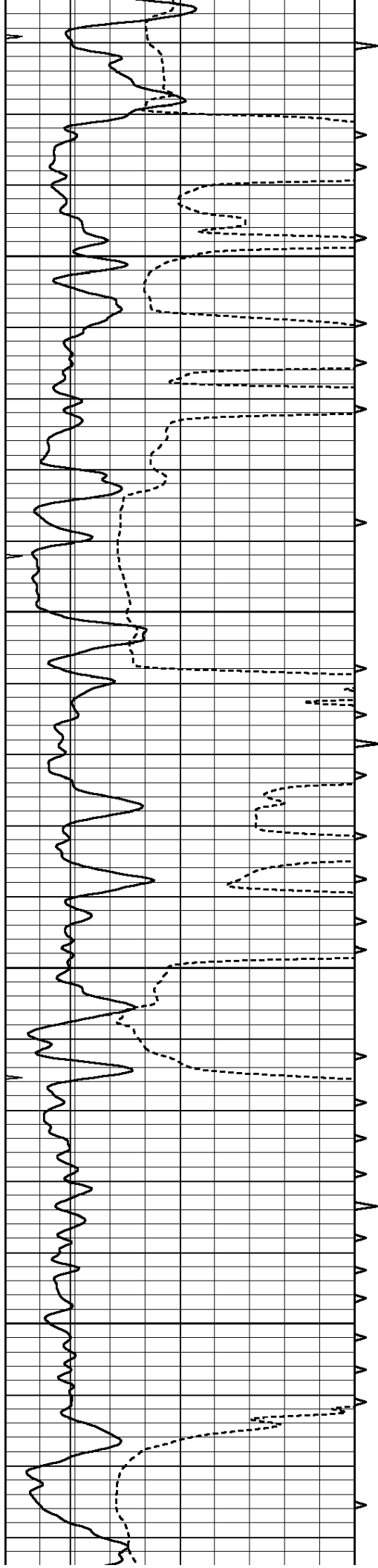










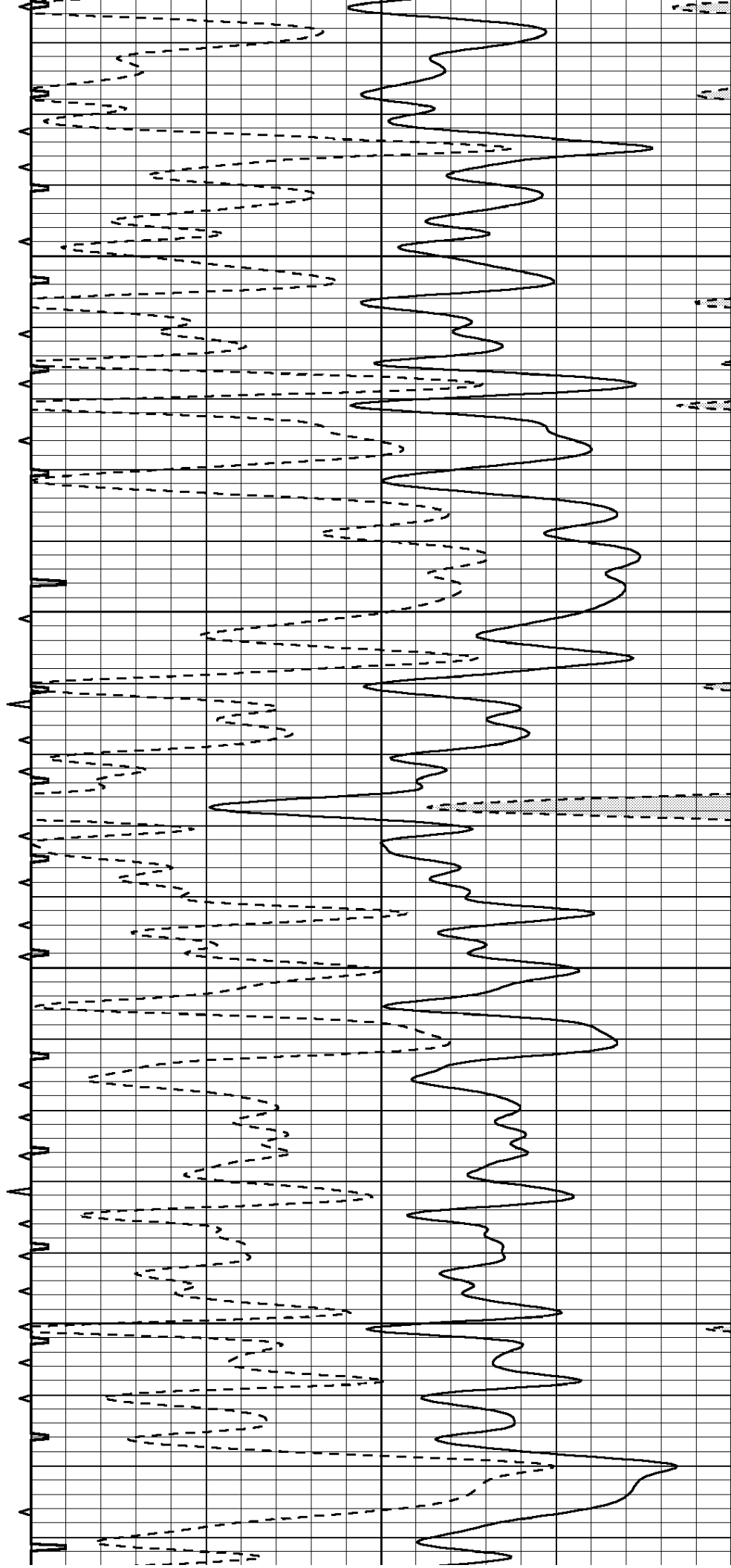


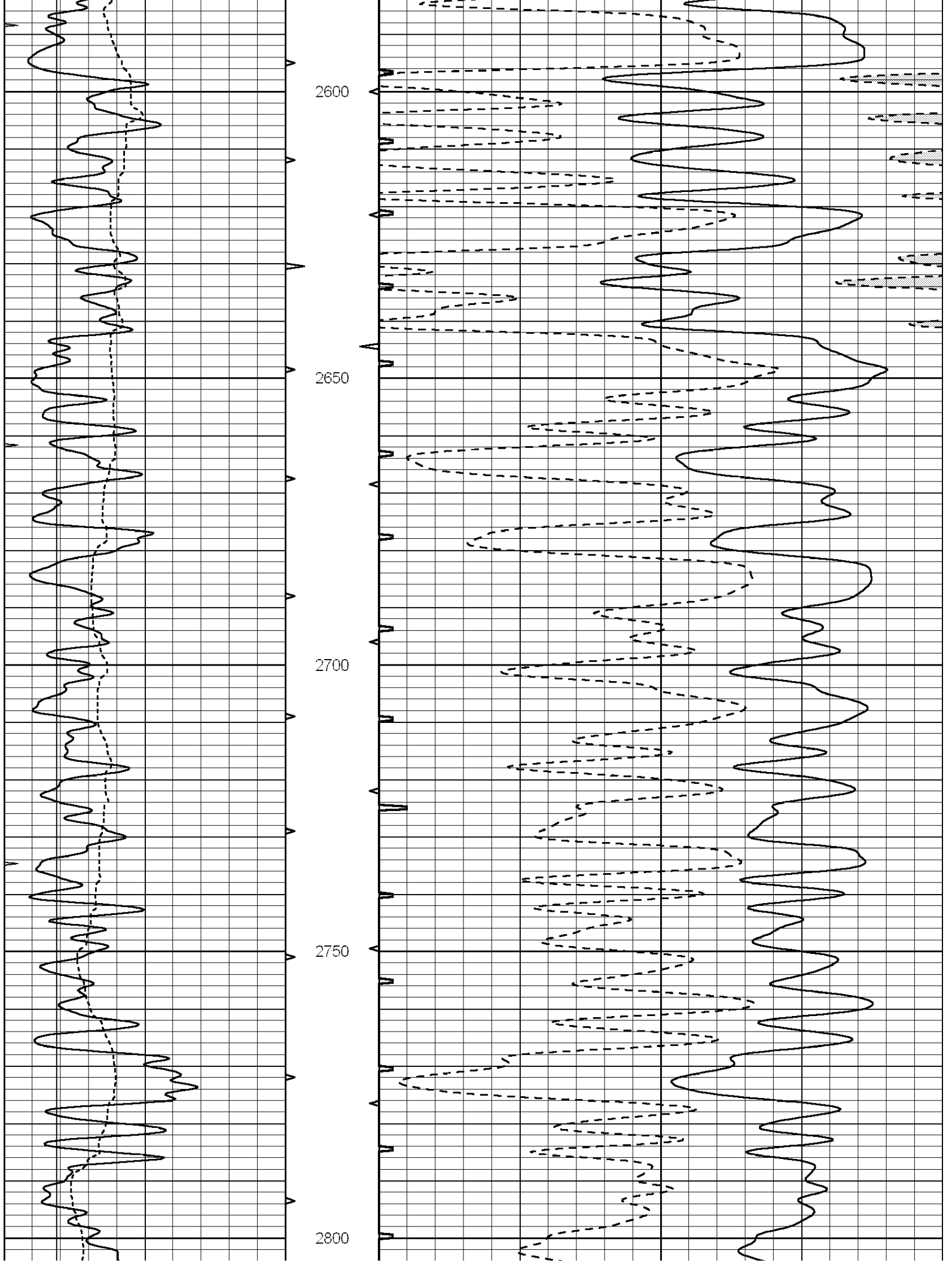
2400

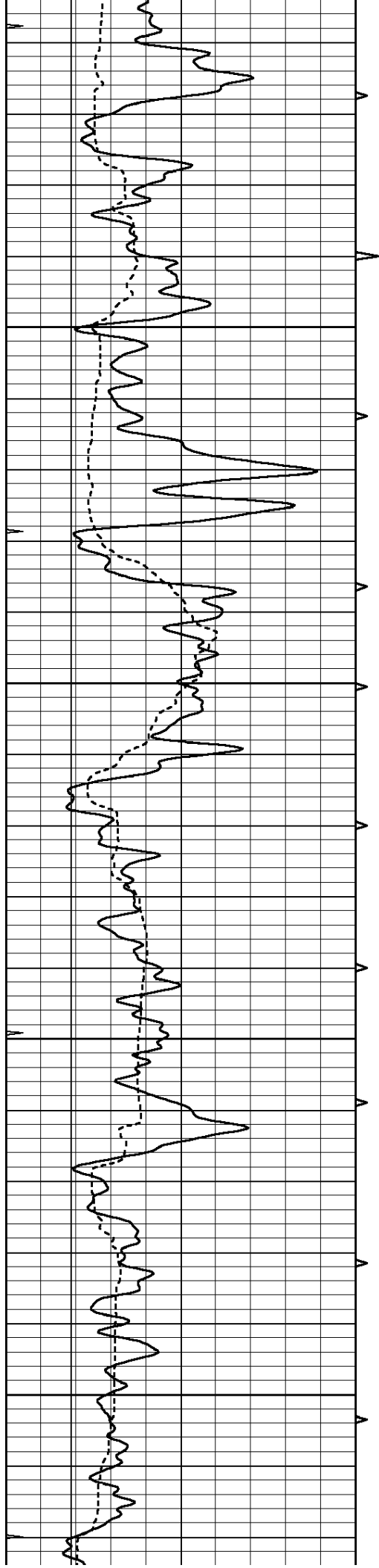
2450

2500

2550





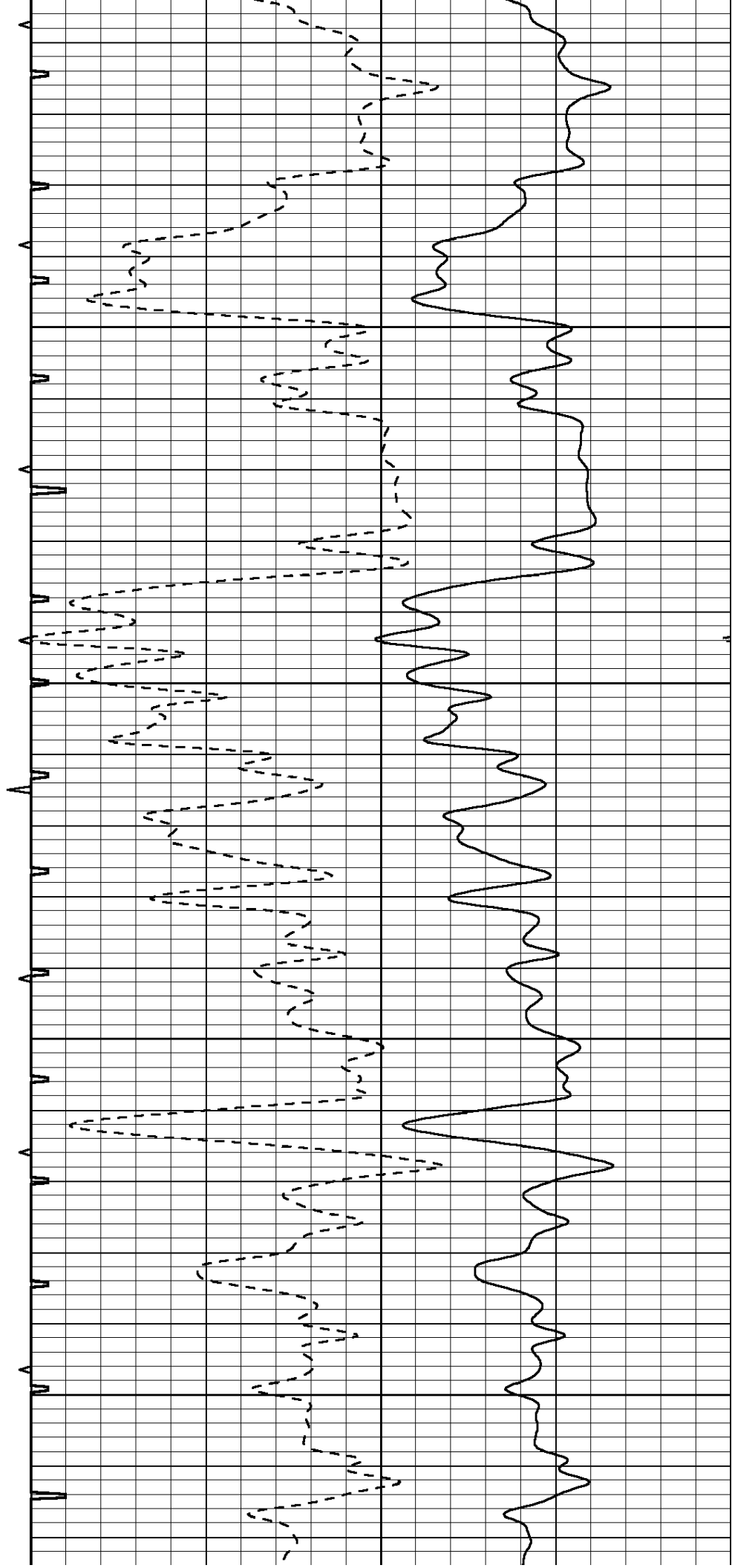


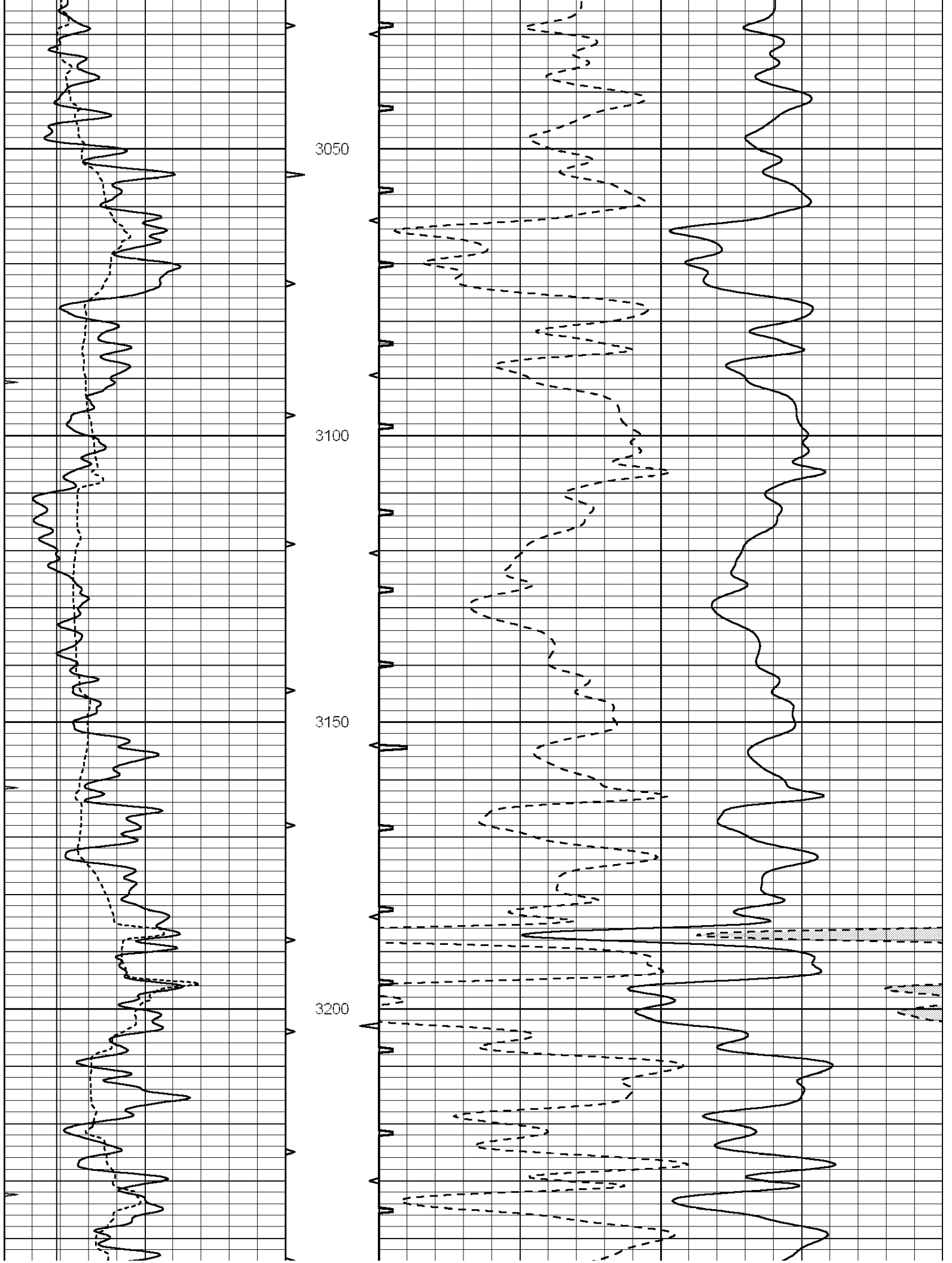
2850

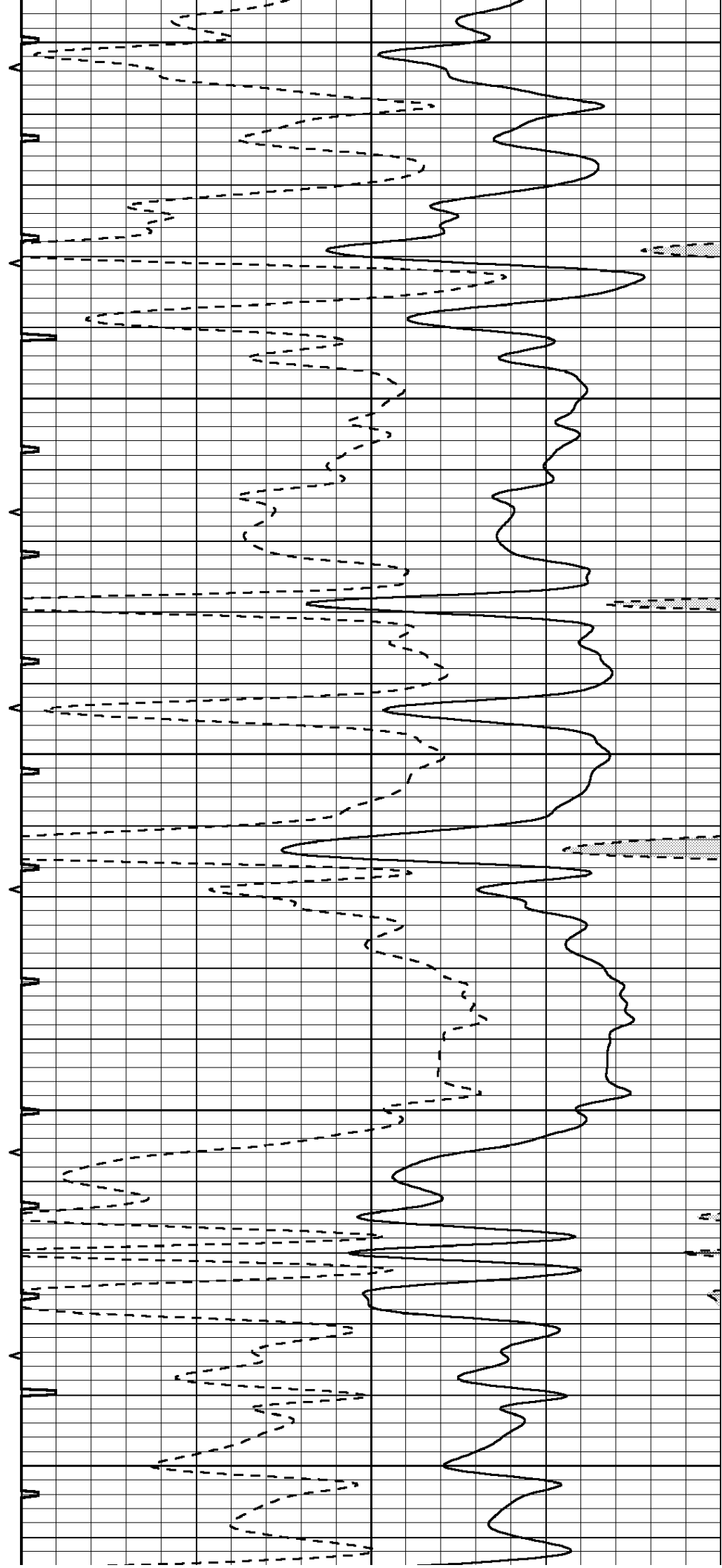
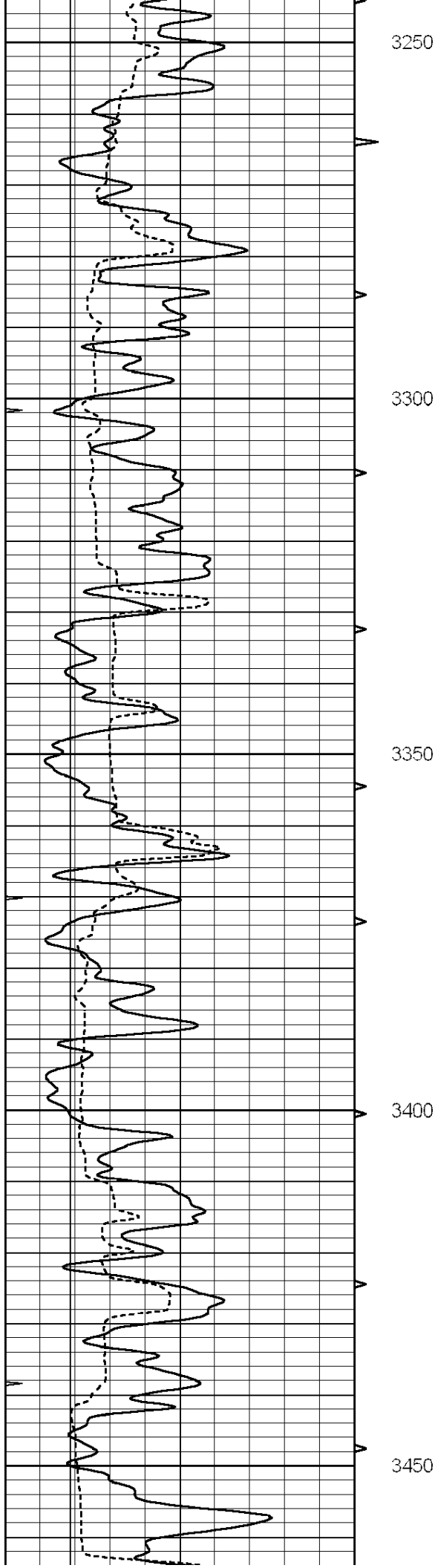
2900

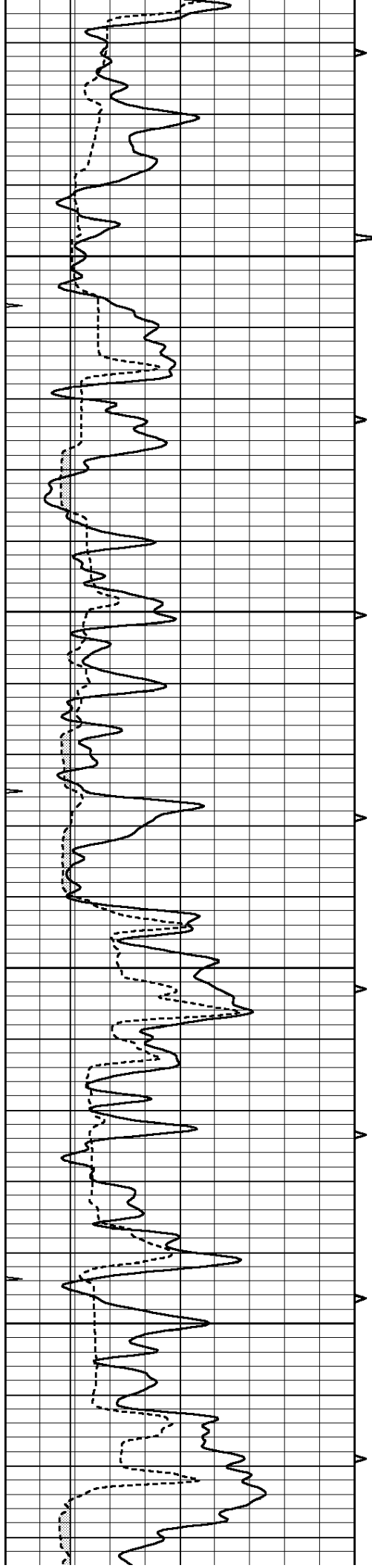
2950

3000







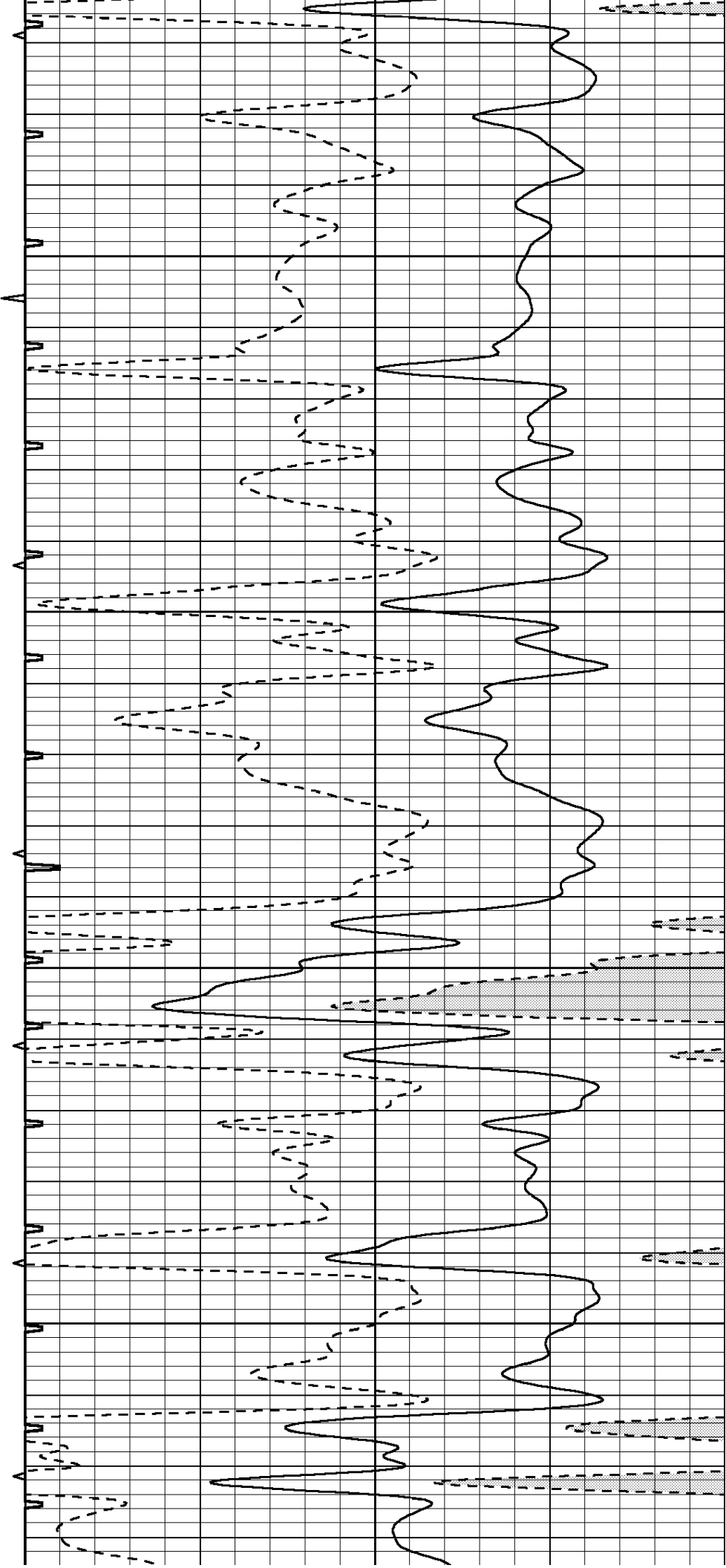


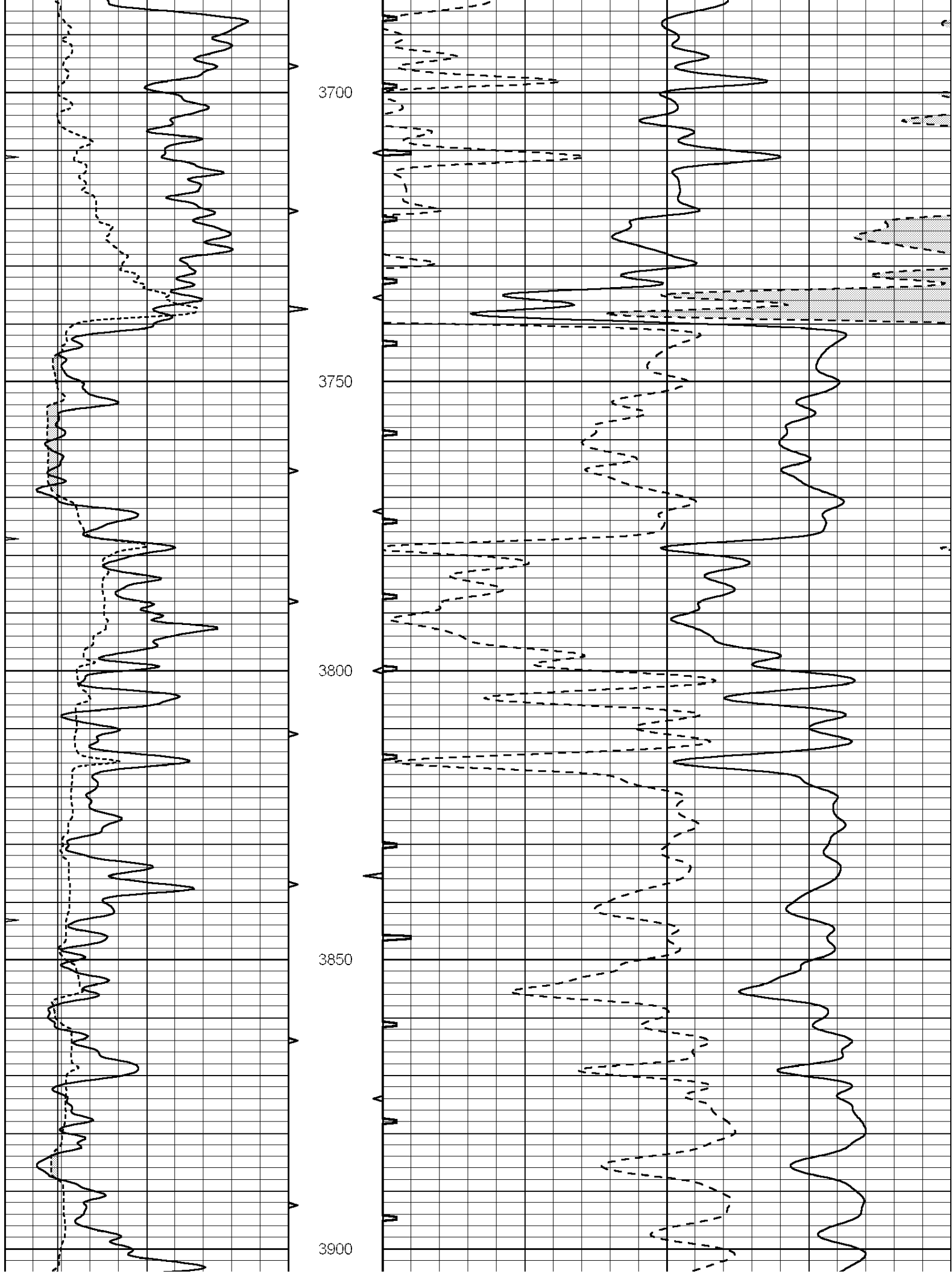
3500

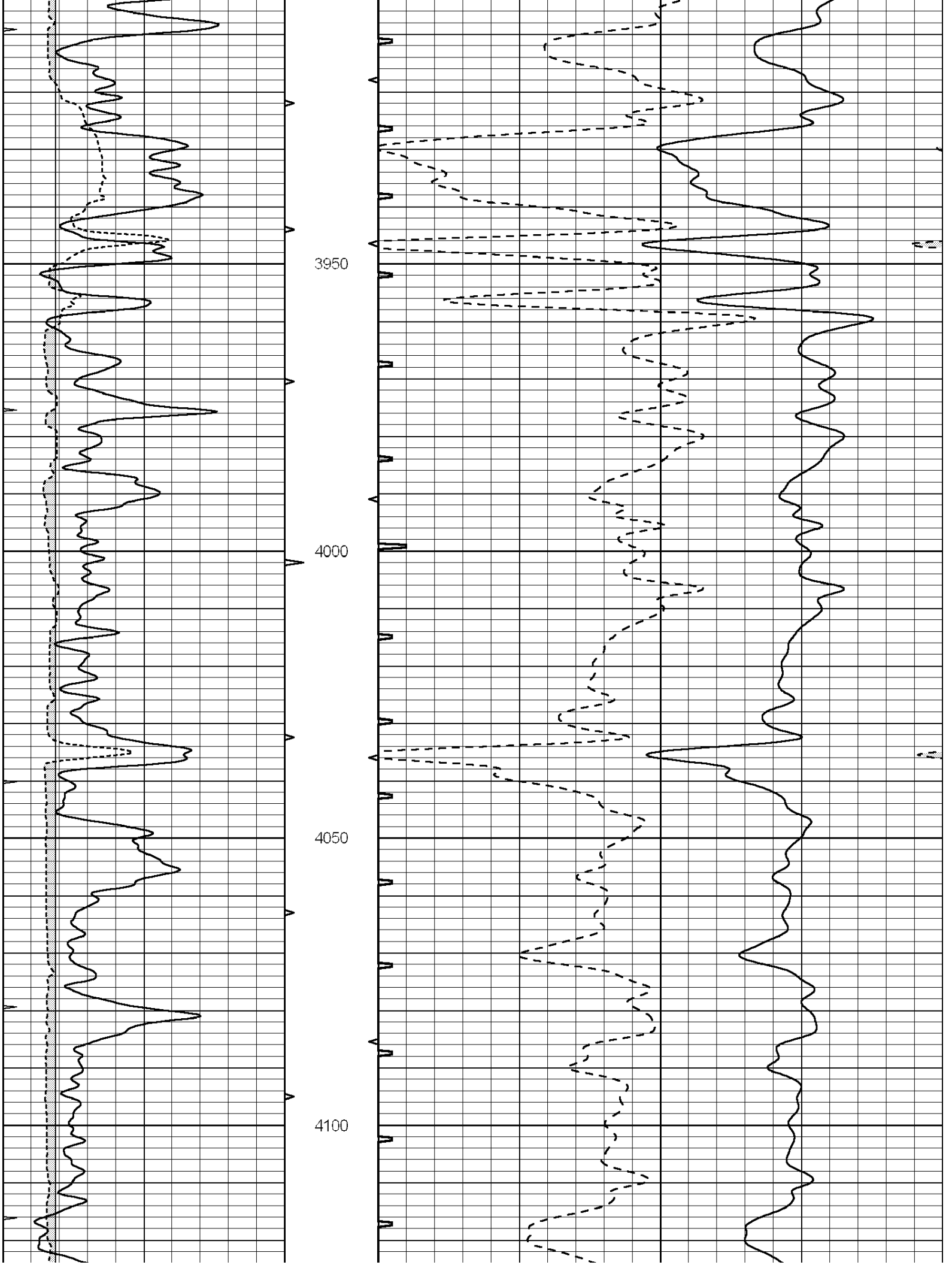
3550

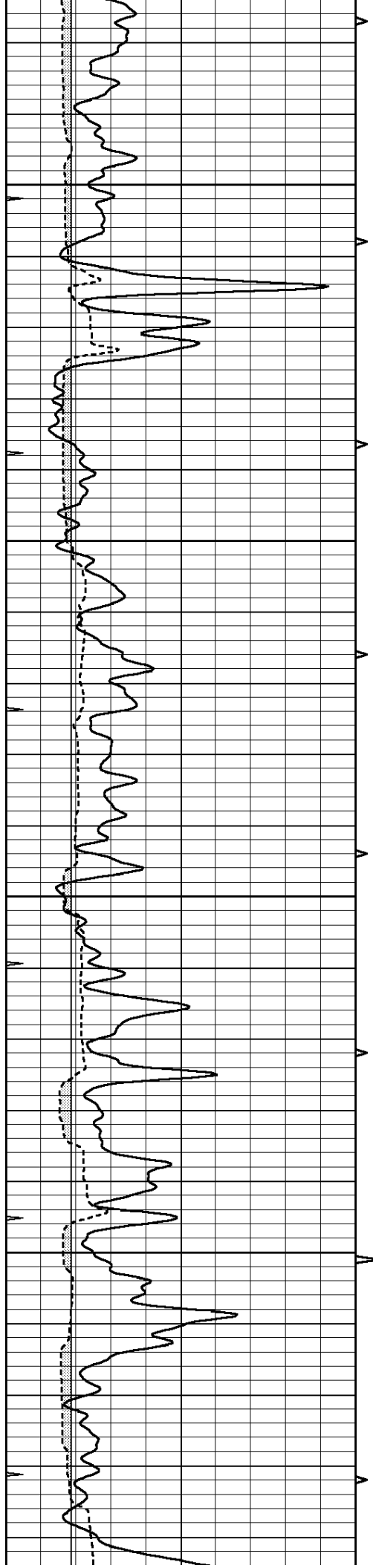
3600

3650







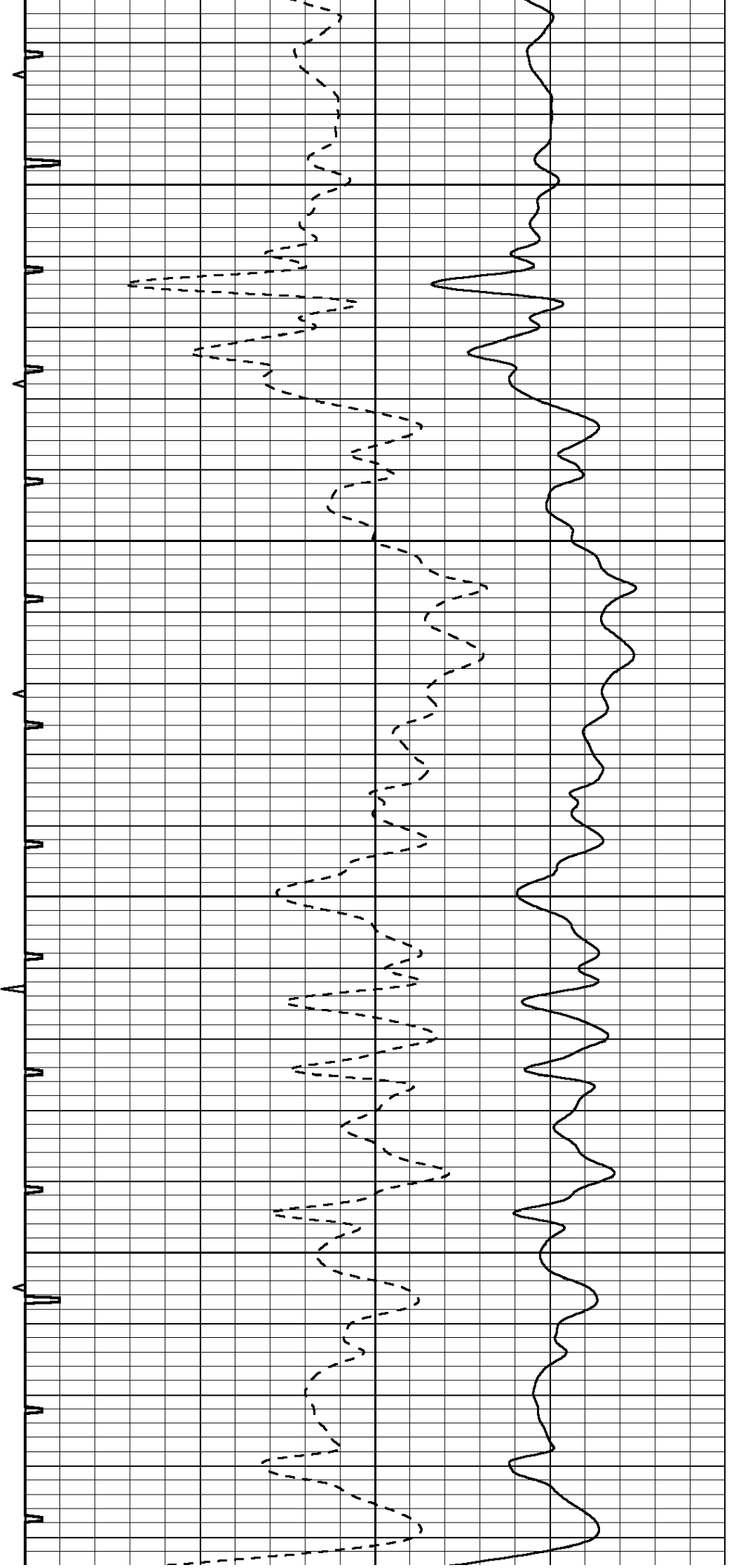


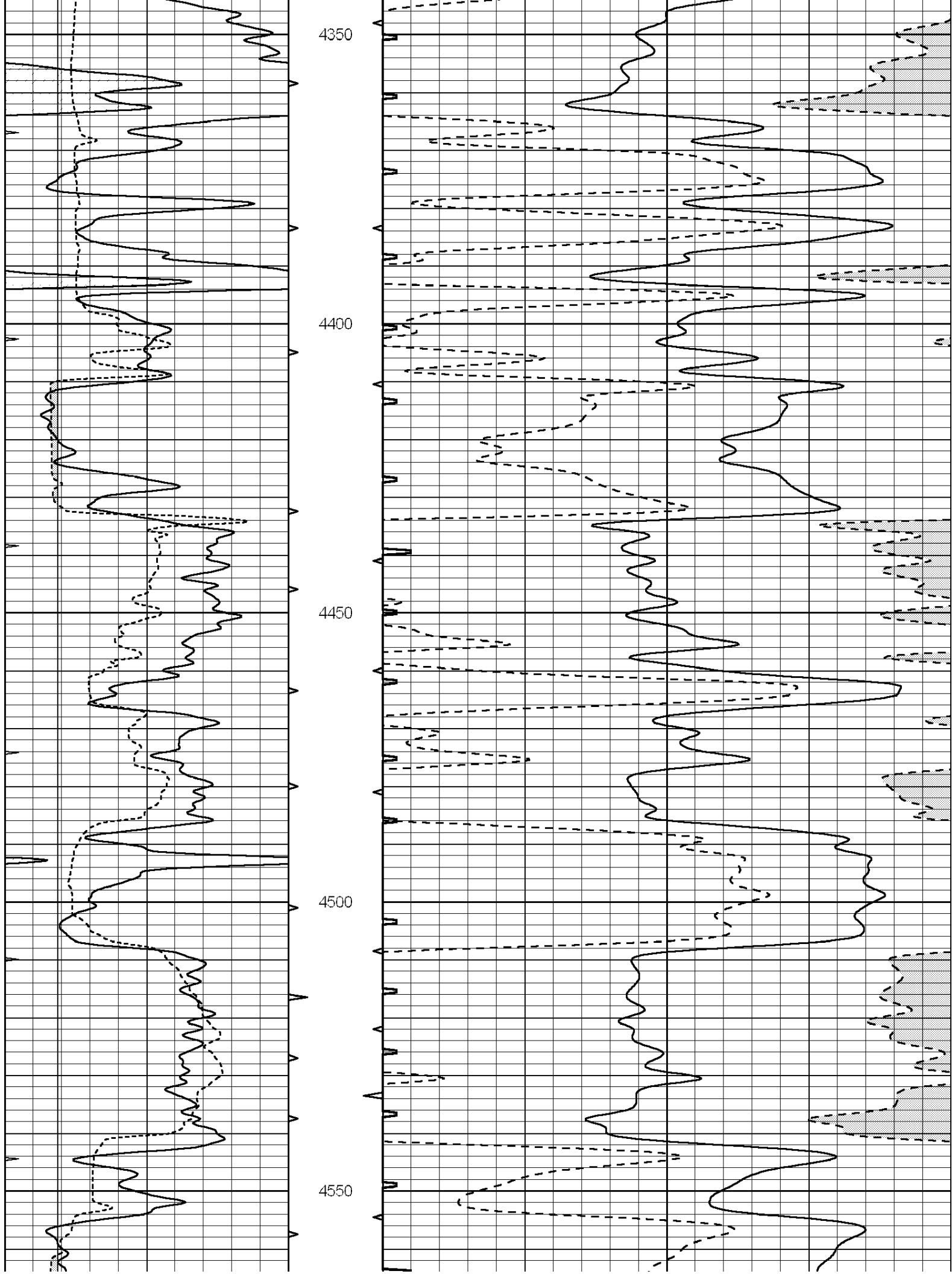
4150

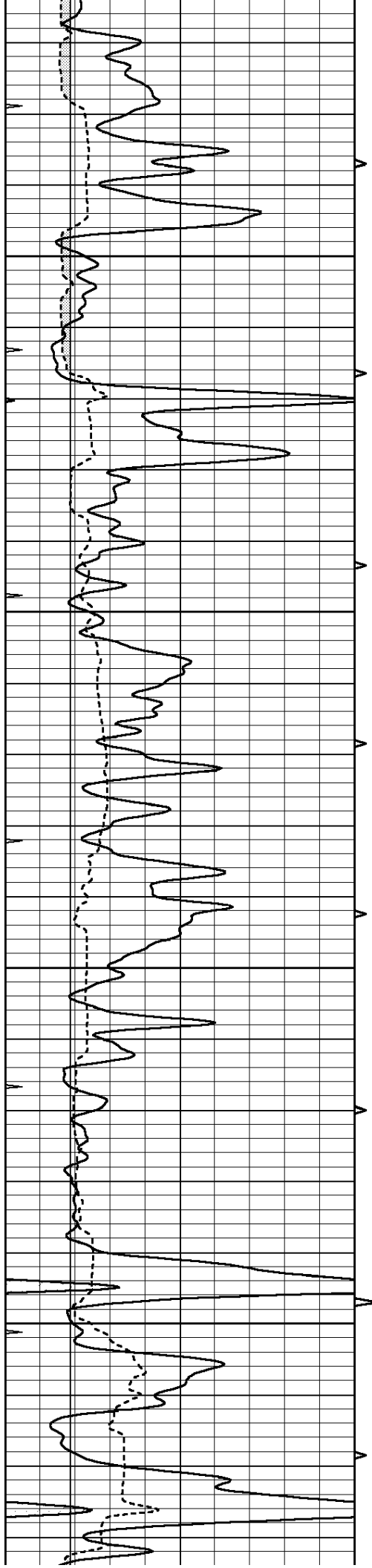
4200

4250

4300





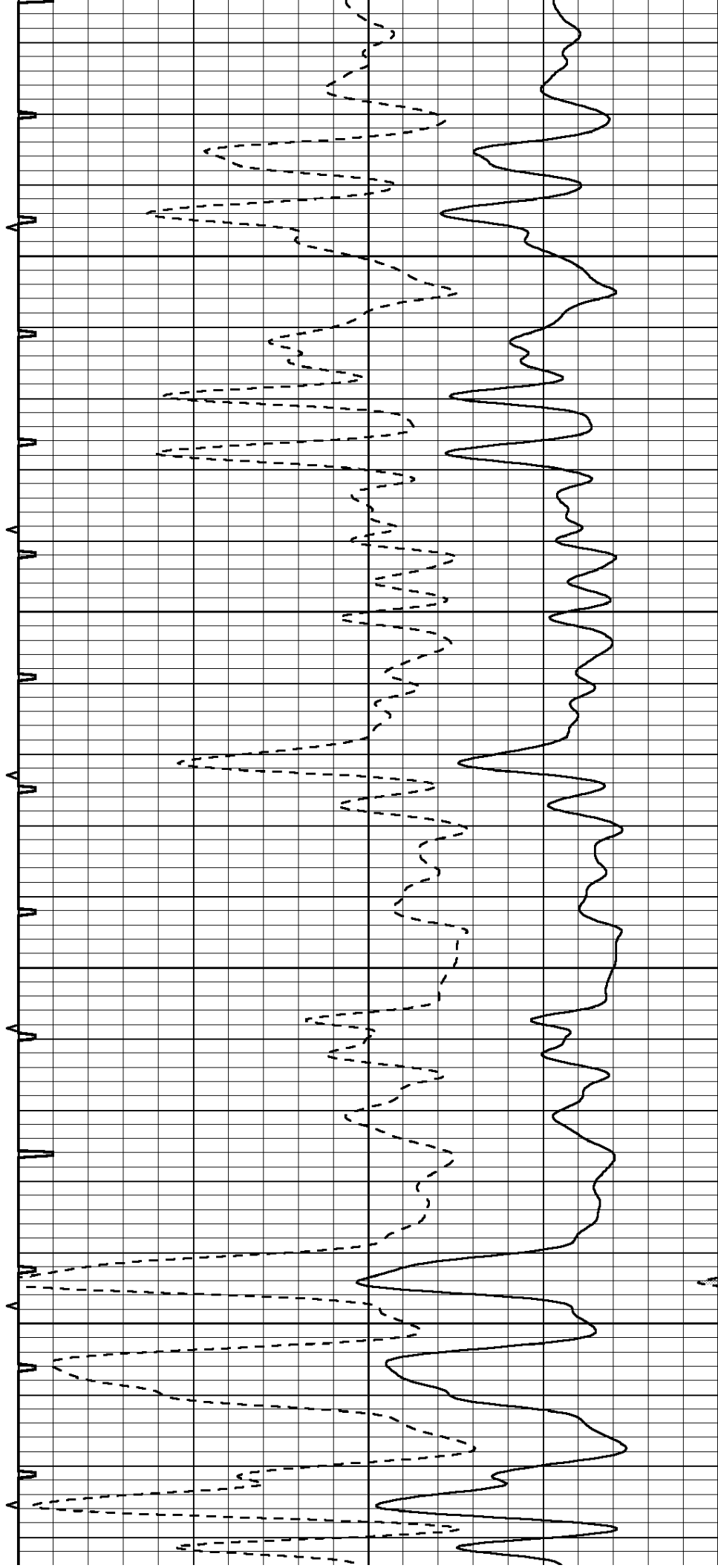


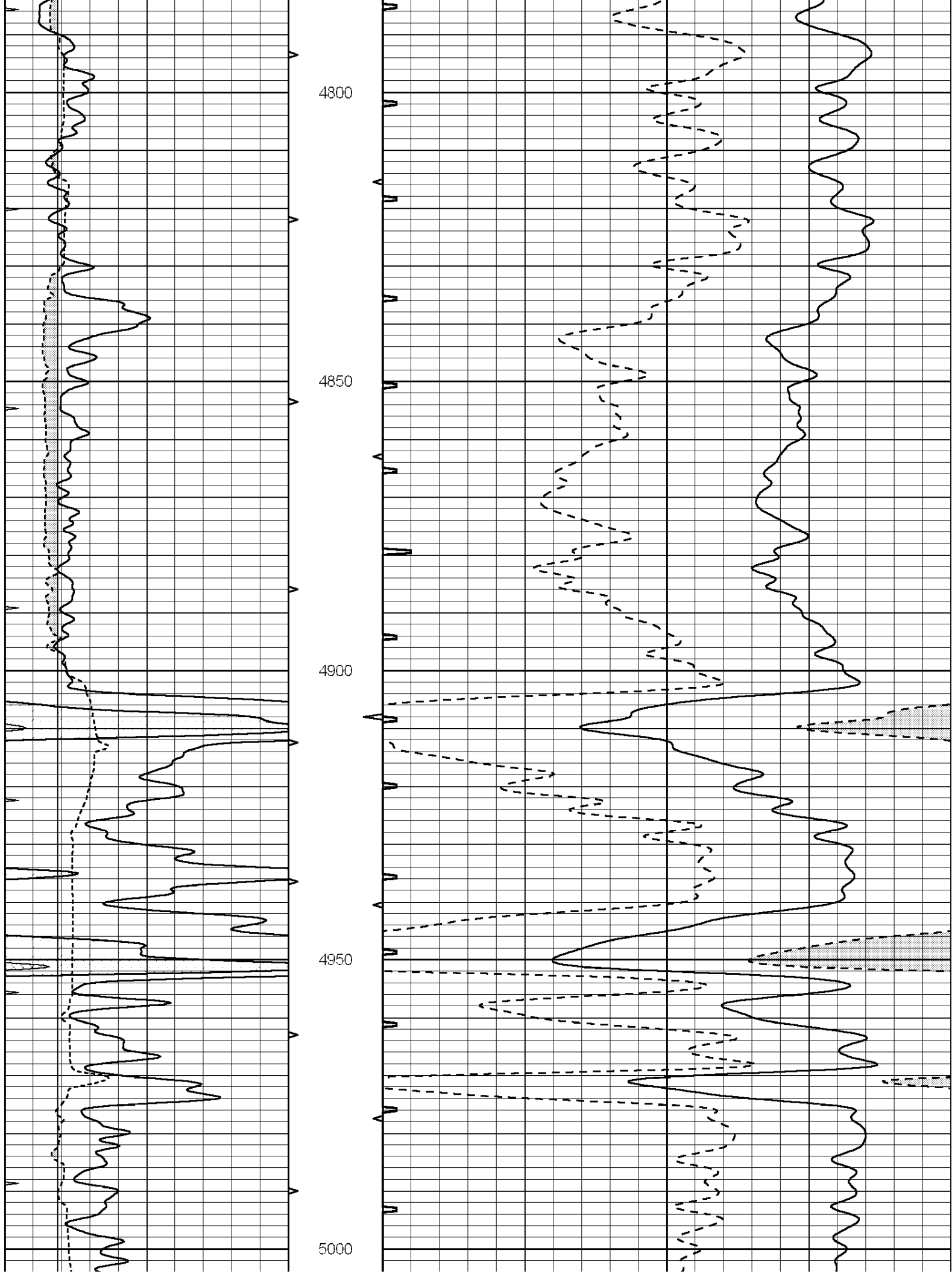
4600

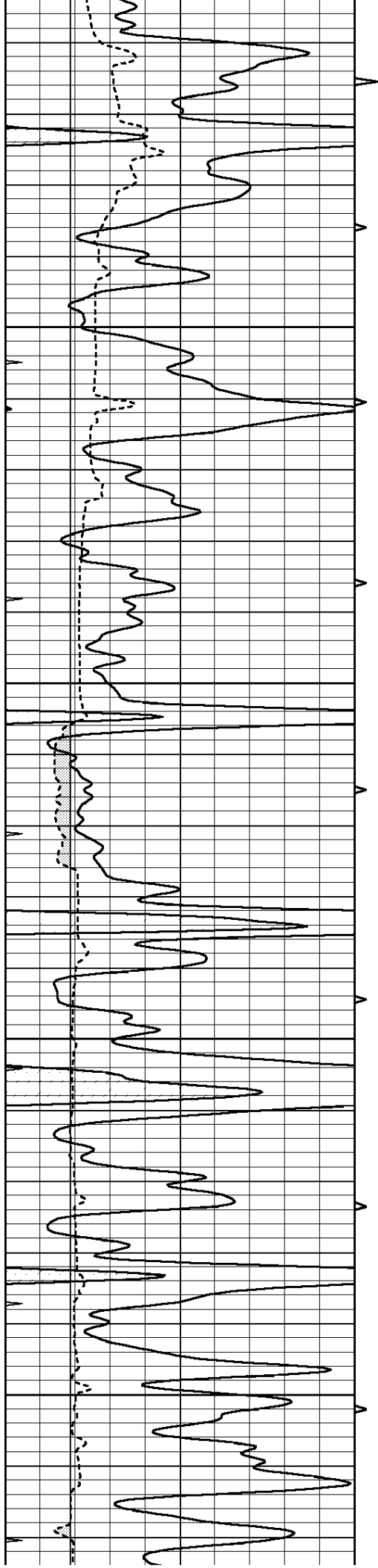
4650

4700

4750





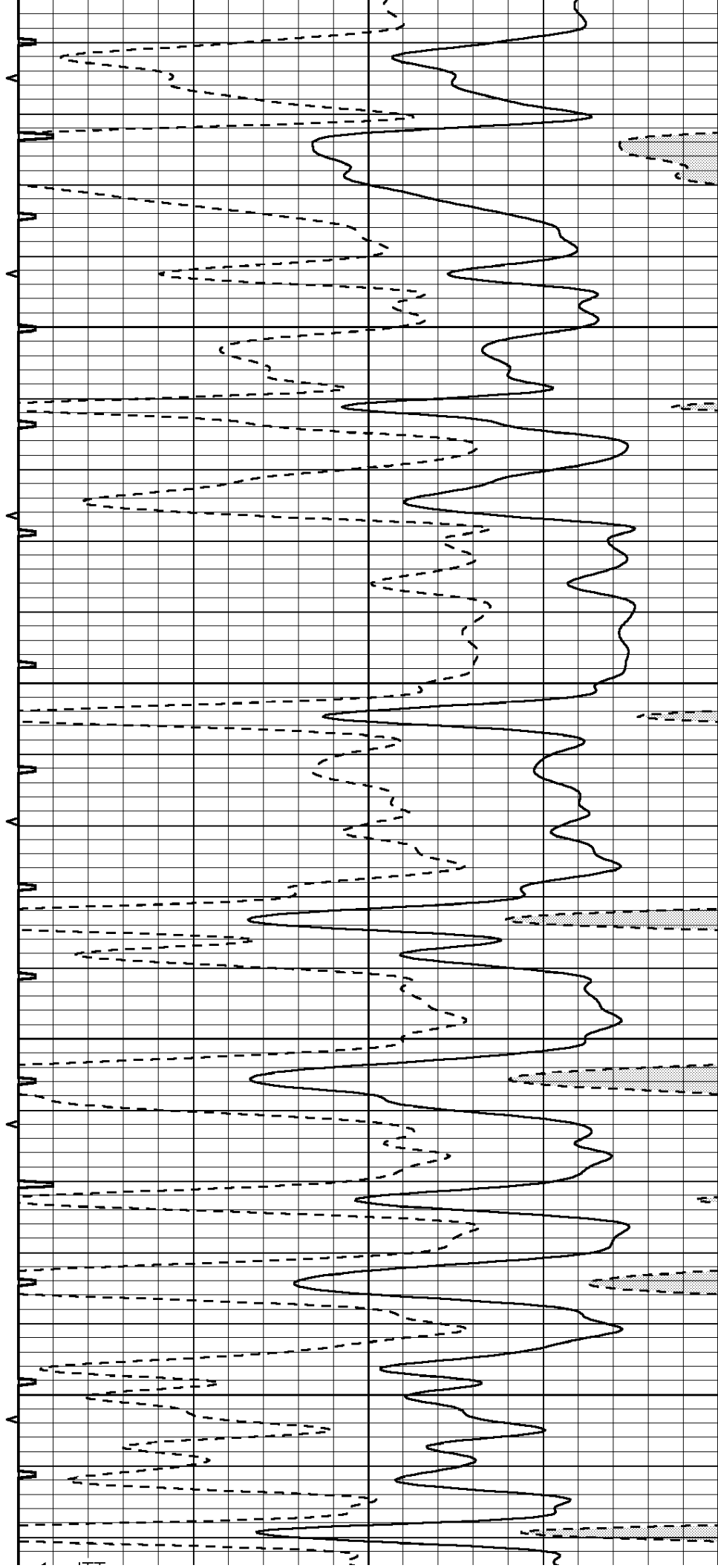


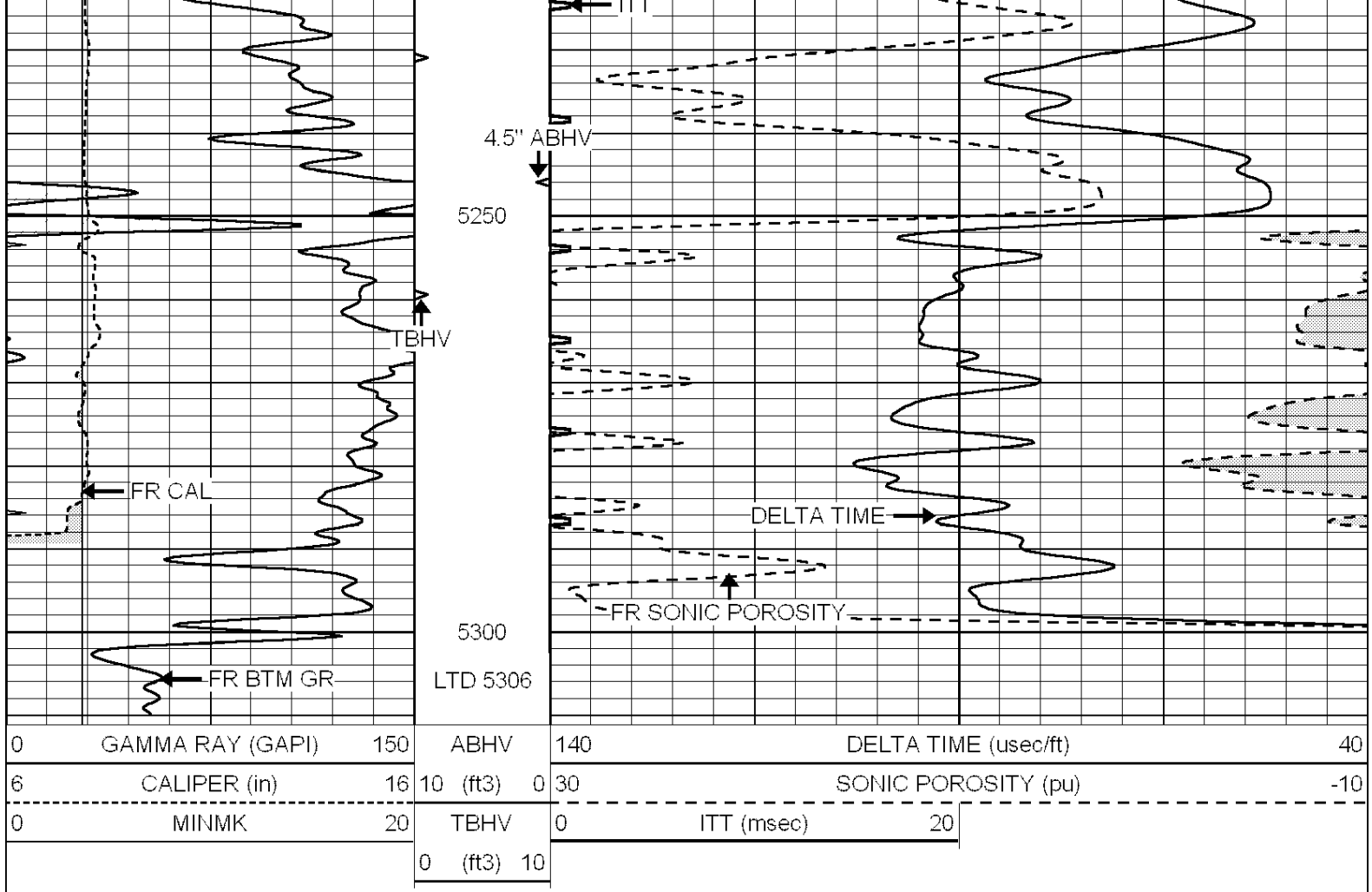
5050

5100

5150

5200



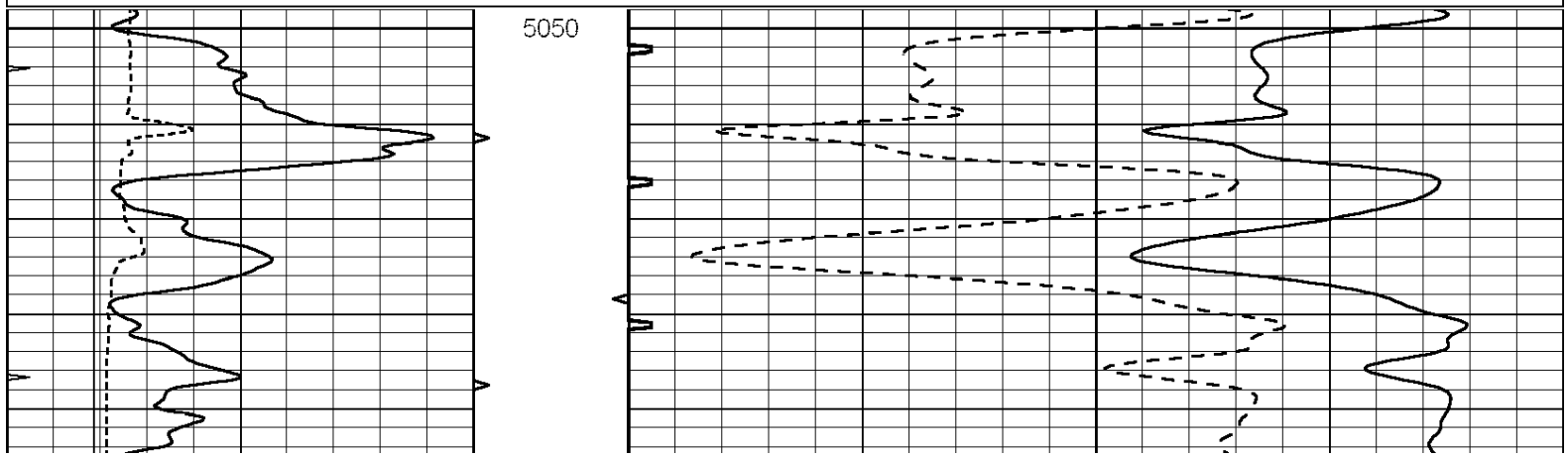


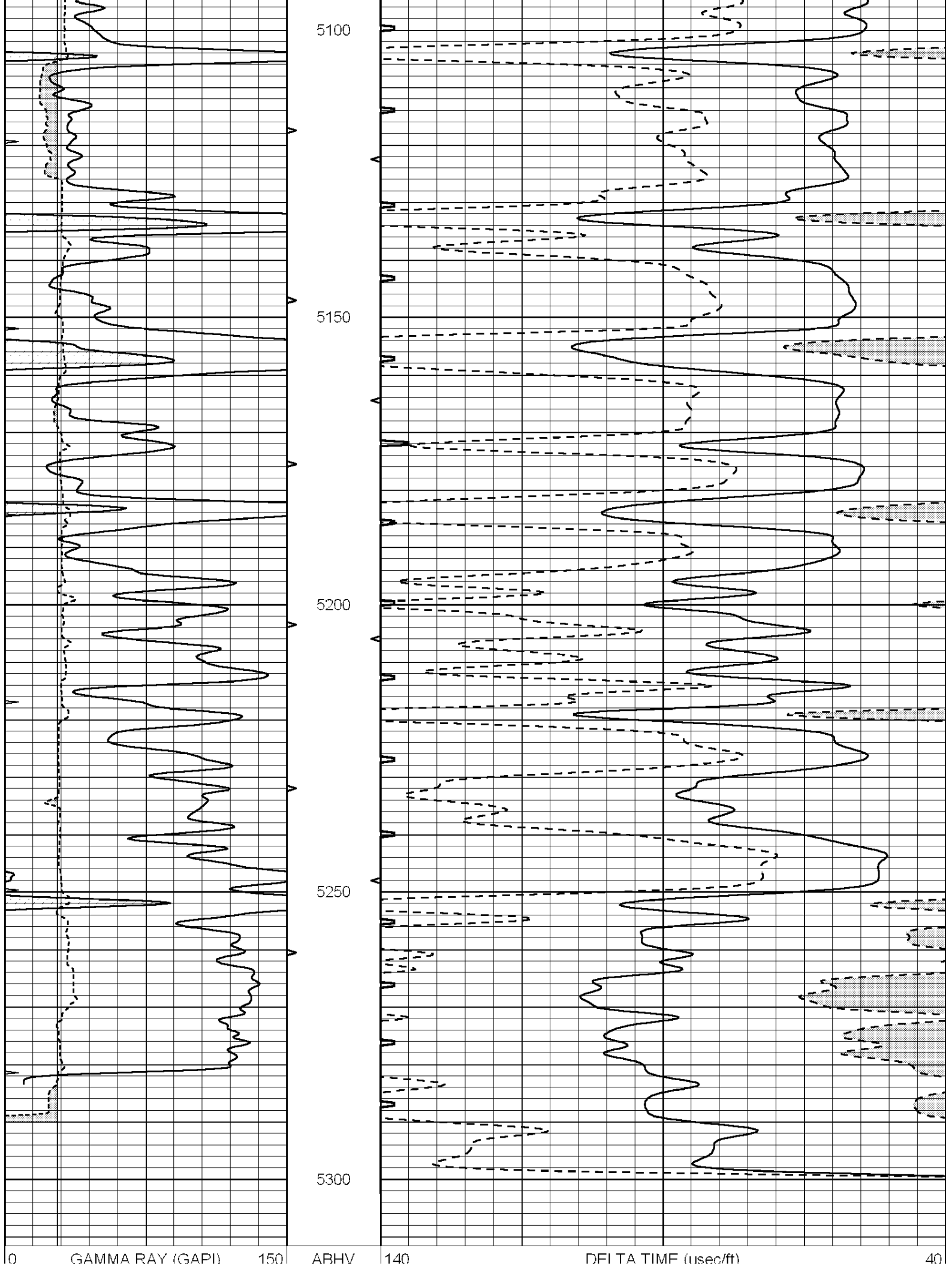
SUPERIOR
Hays,
Kansas

REPEAT SECTION

Database File: 006622pe.db
 Dataset Pathname: pass11.4
 Presentation Format: slt
 Dataset Creation: Sun Mar 27 15:26:05 2011 by Calc Open-Cased 090629
 Charted by: Depth in Feet scaled 1:240

0	GAMMA RAY (GAPI)	150	ABHV	140	DELTA TIME (usec/ft)	40	
6	CALIPER (in)	16	10 (ft3)	0	30	SONIC POROSITY (pu)	-10
0	MINMK	20	TBHV	0	ITT (msec)	20	
			0 (ft3)	10			





6	CALIPER (in)	16	10 (ft3)	0	30	SONIC POROSITY (pu)	-10
0	MINMK	20	TBHV	0	ITT (msec)	20	
			0 (ft3)	10			