



**SUPERIOR**  
Hays,  
Kansas

**COMPENSATED**  
DENSITY / NEUTRON  
PE LOG

Company VINCENT OIL CORPORATION  
Well STIMPERT #1-7  
Field KINGSDOWN NORTHWEST  
County FORD  
State KANSAS

Company VINCENT OIL CORPORATION  
Well STIMPERT #1-7  
Field KINGSDOWN NORTHWEST  
County FORD State KANSAS

Location: API # : 15-057-20720-0000  
285' FNL & 2105' FEL  
NE - NW - NW - NE  
SEC 7 TWP 29S RGE 22W  
Permanent Datum GROUND LEVEL Elevation 2512  
Log Measured From KELLY BUSHING 12' A.G.L.  
Drilling Measured From KELLY BUSHING  
Other Services  
DIL/MEL  
SONIC  
Elevation  
K.B. 2524  
D.F. 2522  
G.L. 2512

Date	3/27/11		
Run Number	ONE		
Depth Driller	5301		
Depth Logger	5306		
Bottom Logged Interval	5304		
Top Log Interval	4100		
Casing Driller	8 5/8" @ 696		
Casing Logger	697		
Bit Size	7 7/8"		
Type Fluid in Hole	CHEMICAL MUD	CHLORIDES 5,000 PPM	
Density / Viscosity	9.4/53		
pH / Fluid Loss	10.0/8.8		
Source of Sample	FLOWLINE		
Rim @ Meas. Temp	.550 @ 70F		
Rmf @ Meas. Temp	.413 @ 70F		
Rmc @ Meas. Temp	.660 @ 70F		
Source of Rmf / Rmc	MEASUREMENT		
Rim @ BHT	.301 @ 128F		
Time Circulation Stopped	3 HOURS		
Time Logger on Bottom	8:00 P.M.		
Maximum Recorded Temperature	128F		
Equipment Number	0836		
Location	HAYS, KANSAS		
Recorded By	JEFF LUEBBERS		
Witnessed By	JIM HALL		

<<< Fold Here >>>

All interpretations are opinions based on inferences from electrical or other measurements and we cannot and do not guarantee the accuracy or correctness of any interpretation, and we shall not, except in the case of gross or willful negligence on our part, be liable or responsible for any loss, costs, damages, or expenses incurred or sustained by anyone resulting from any interpretation made by any of our officers, agents or employees. These interpretations are also subject to our general terms and conditions set out in our current Price Schedule.

**Comments**

THANK YOU FOR USING SUPERIOR WELL SERVICE HAYS, KANSAS (785) 628-6395  
DIRECTIONS  
KINGSDOWN, KS. & HWY 54, 1N. ON "RD. 125" TO "WILDFIRE RD.", 1/2W., S. INTO

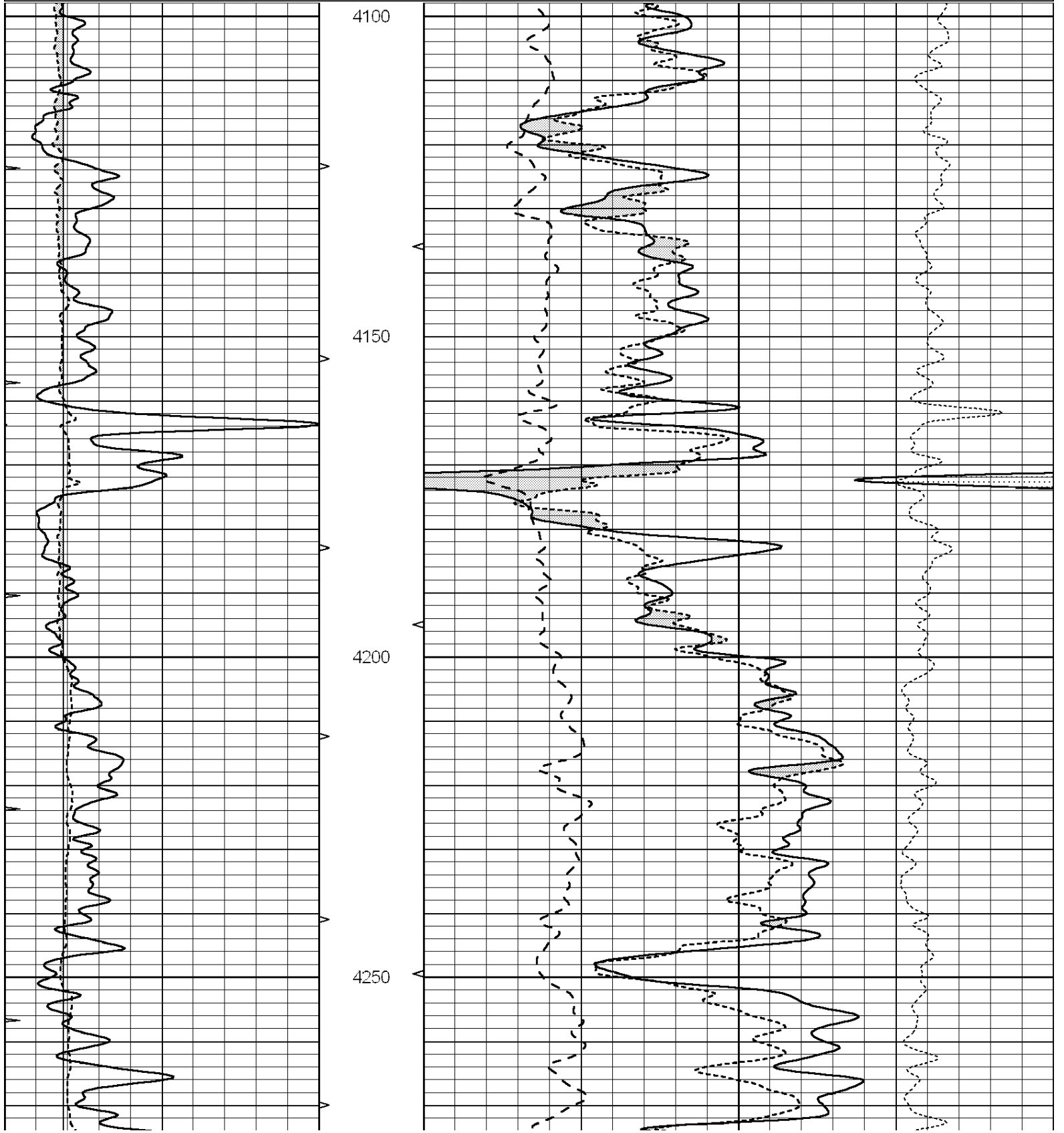


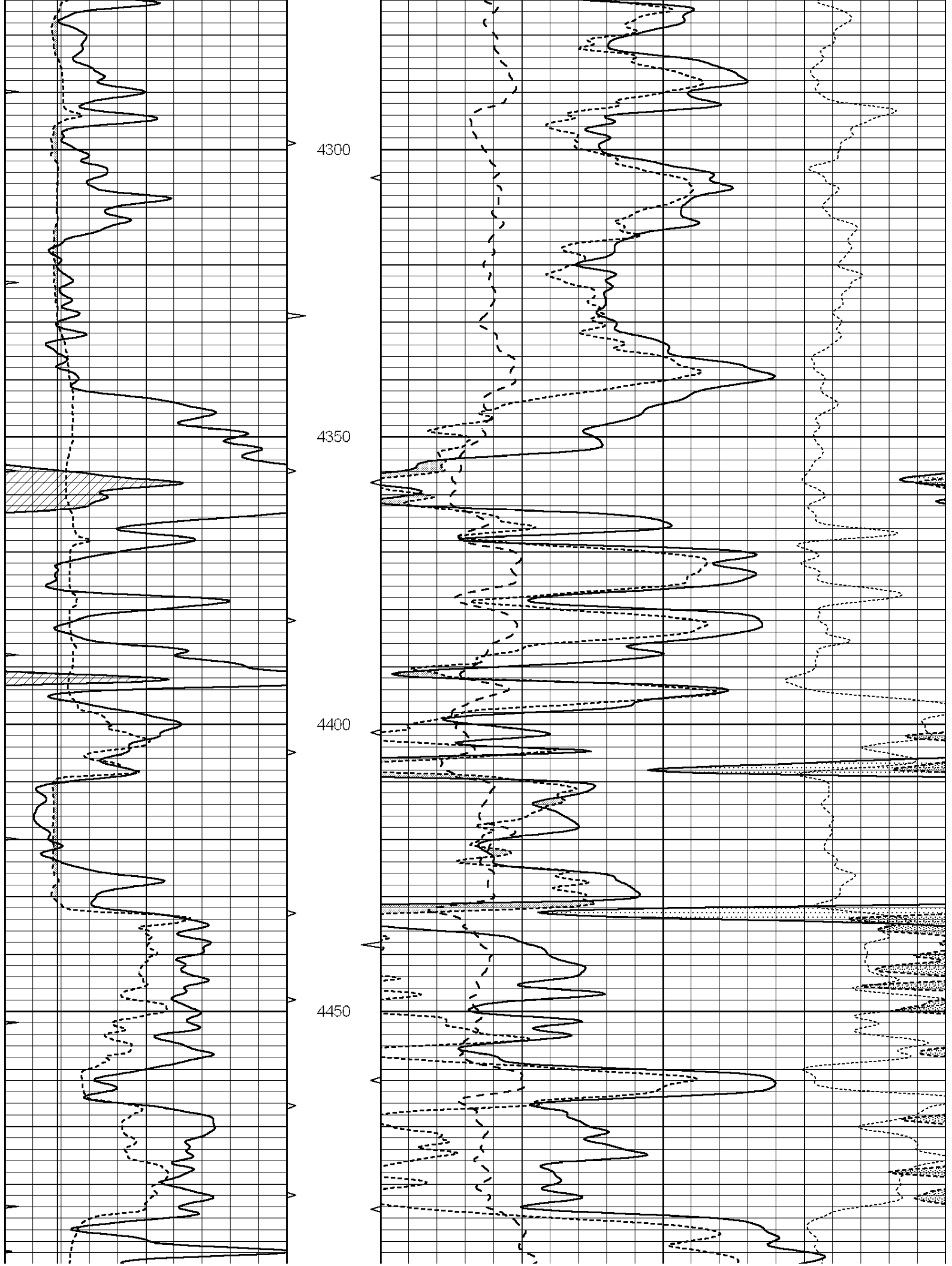
**SUPERIOR**  
Hays,  
Kansas

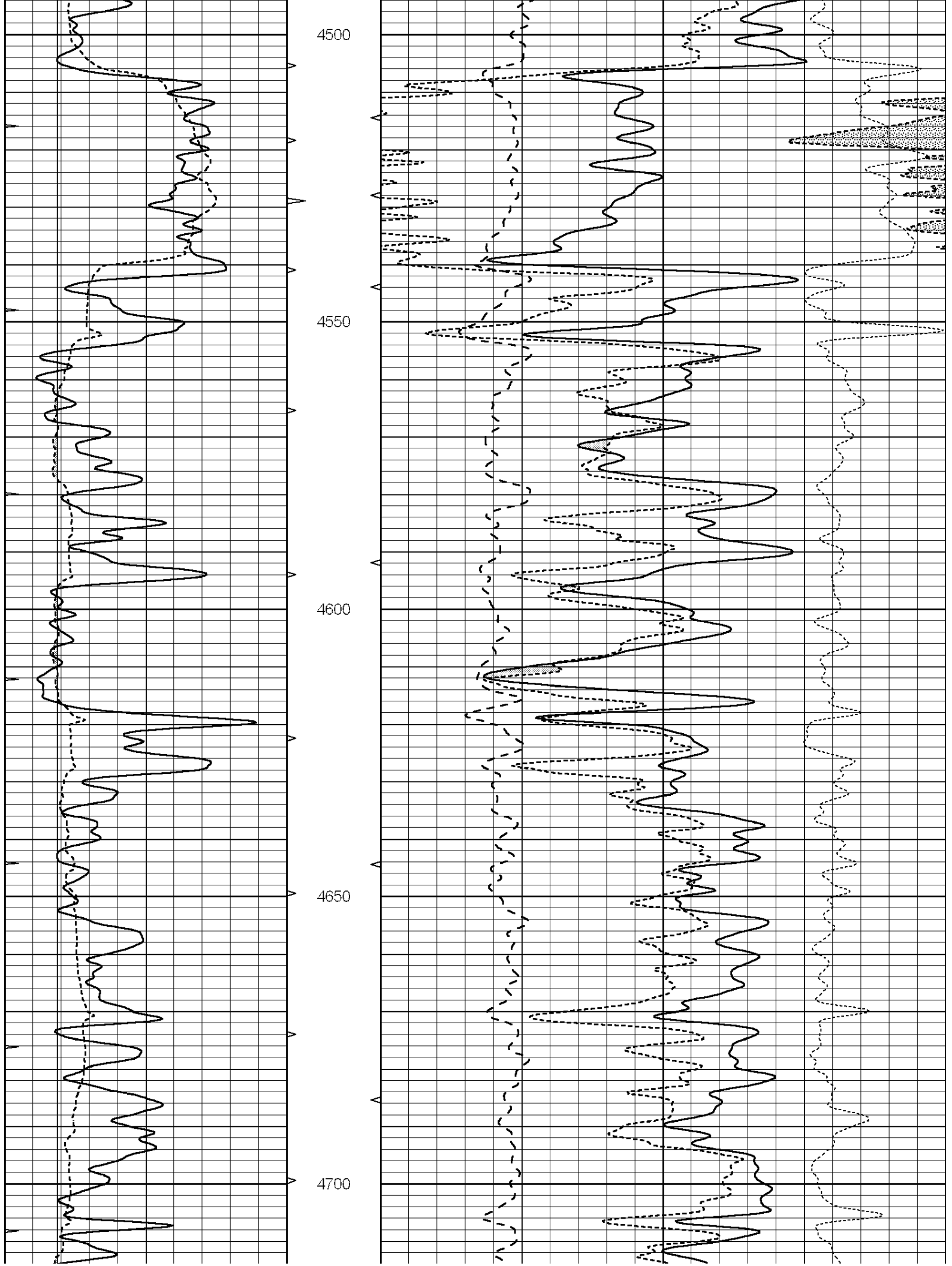
**MAIN SECTION**

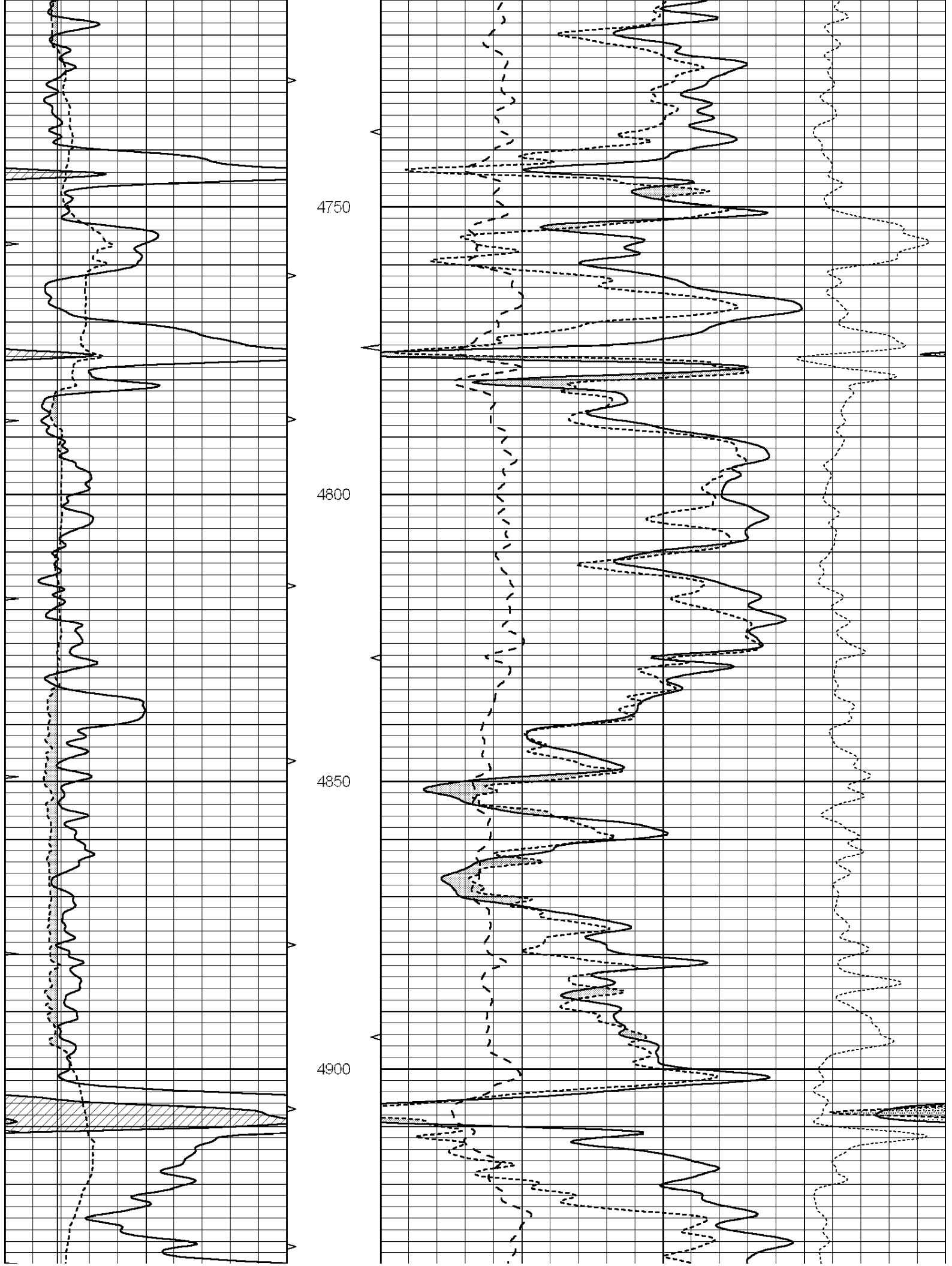
Database File: 006622pe.db  
 Dataset Pathname: pass3.6  
 Presentation Format: ldt\_neu  
 Dataset Creation: Sun Mar 27 11:36:53 2011  
 Charted by: Depth in Feet scaled 1:240

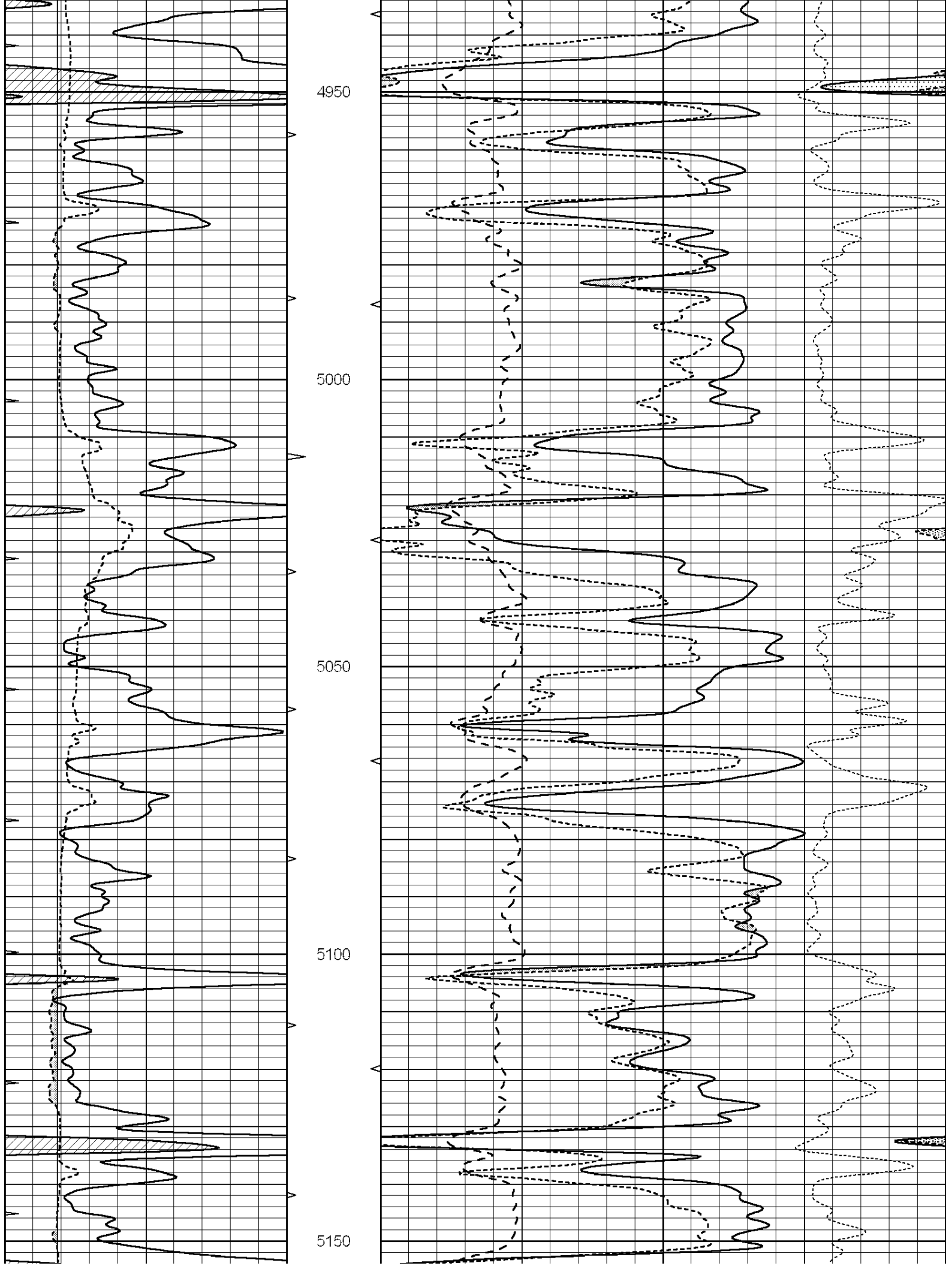
0	GAMMA RAY (GAPI)	150	ABHV	30	COMPENSATED DENSITY (pu)		-10
6	CALIPER (in)	16	10 (ft3)	0	COMPENSATED NEUTRON (pu)		-10
0	MINMK	20	TBHV	0	PE	10	-0.25 CORRECTION (g/cc) 0.25
			0 (ft3)	10			

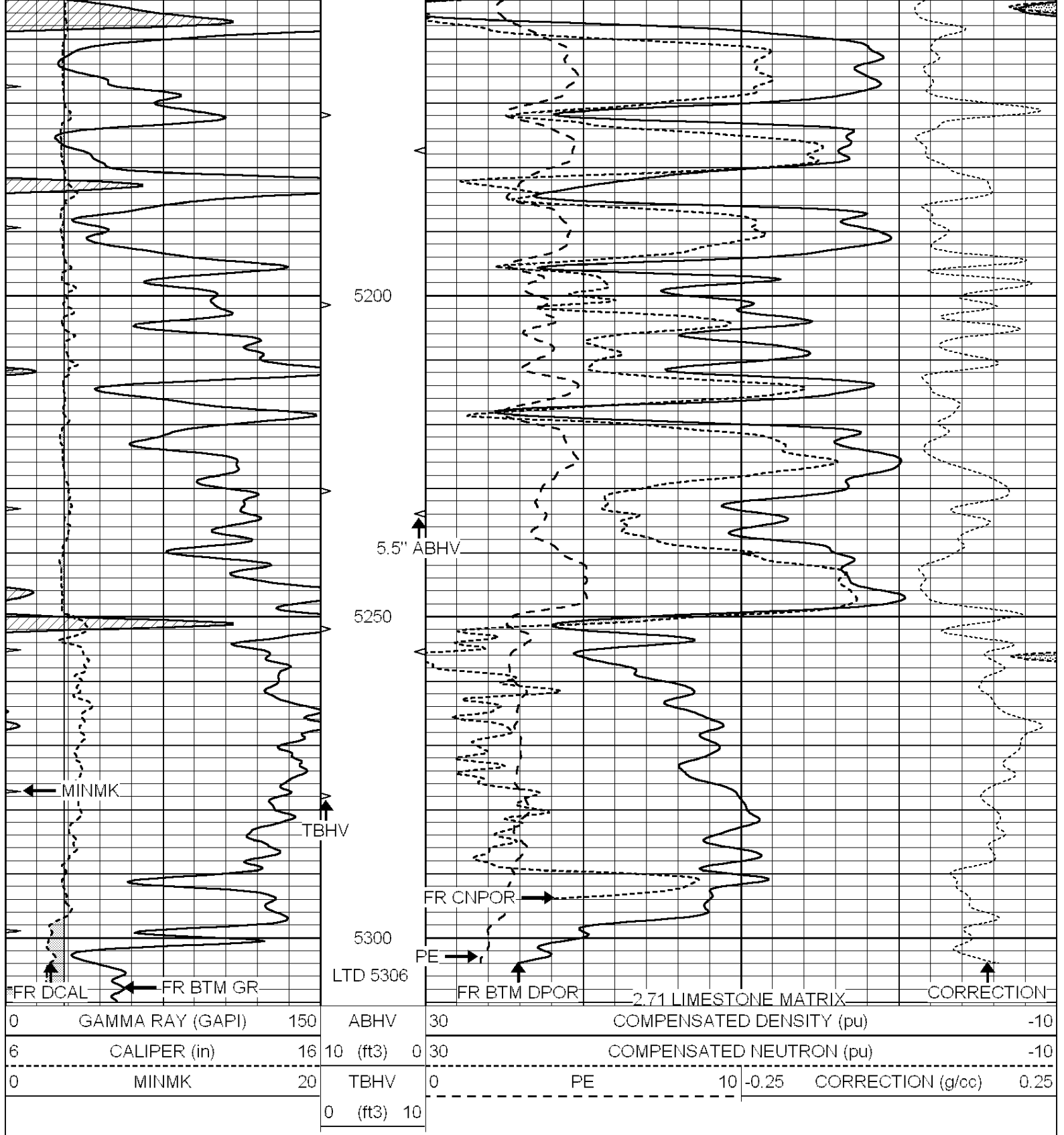










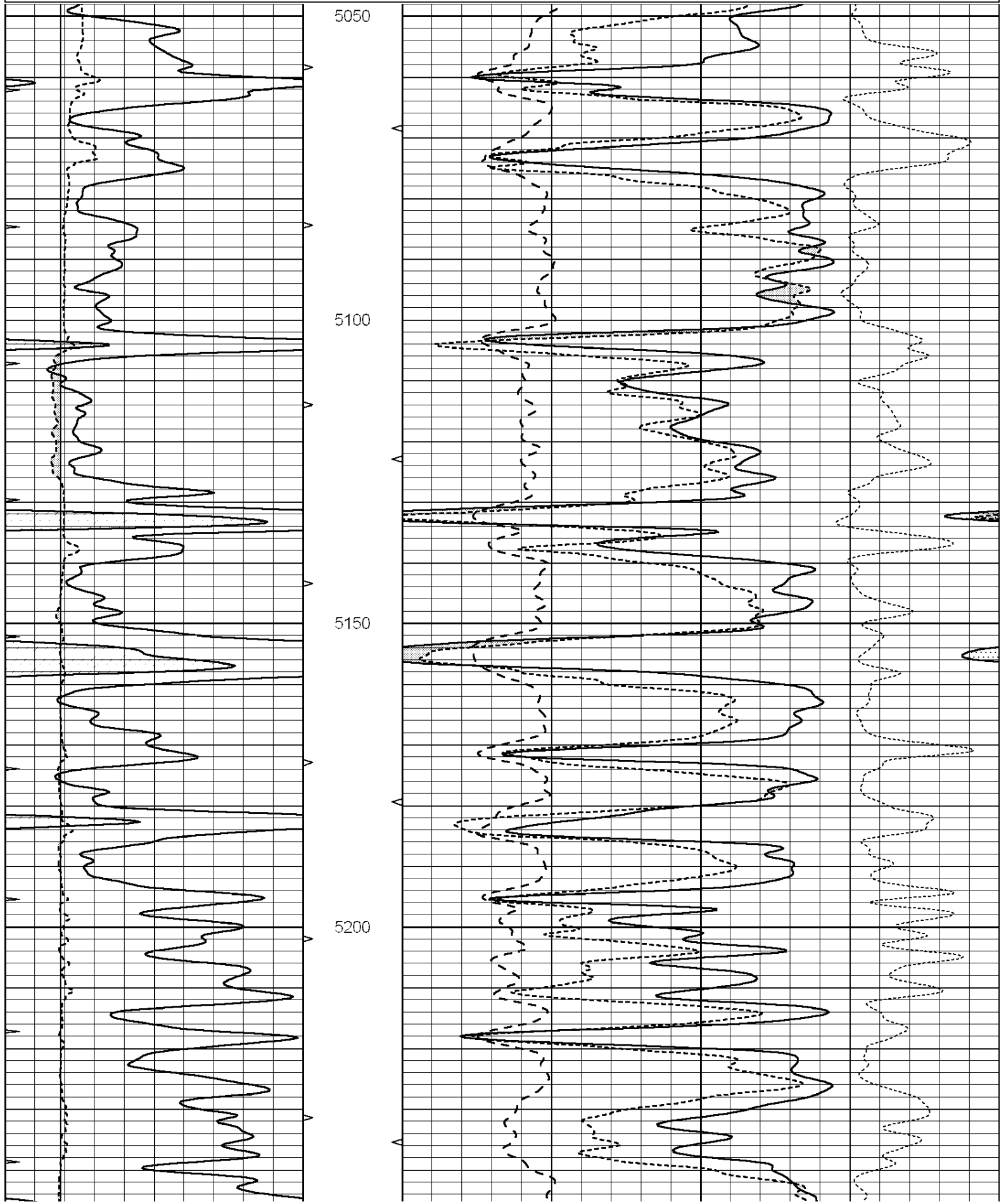


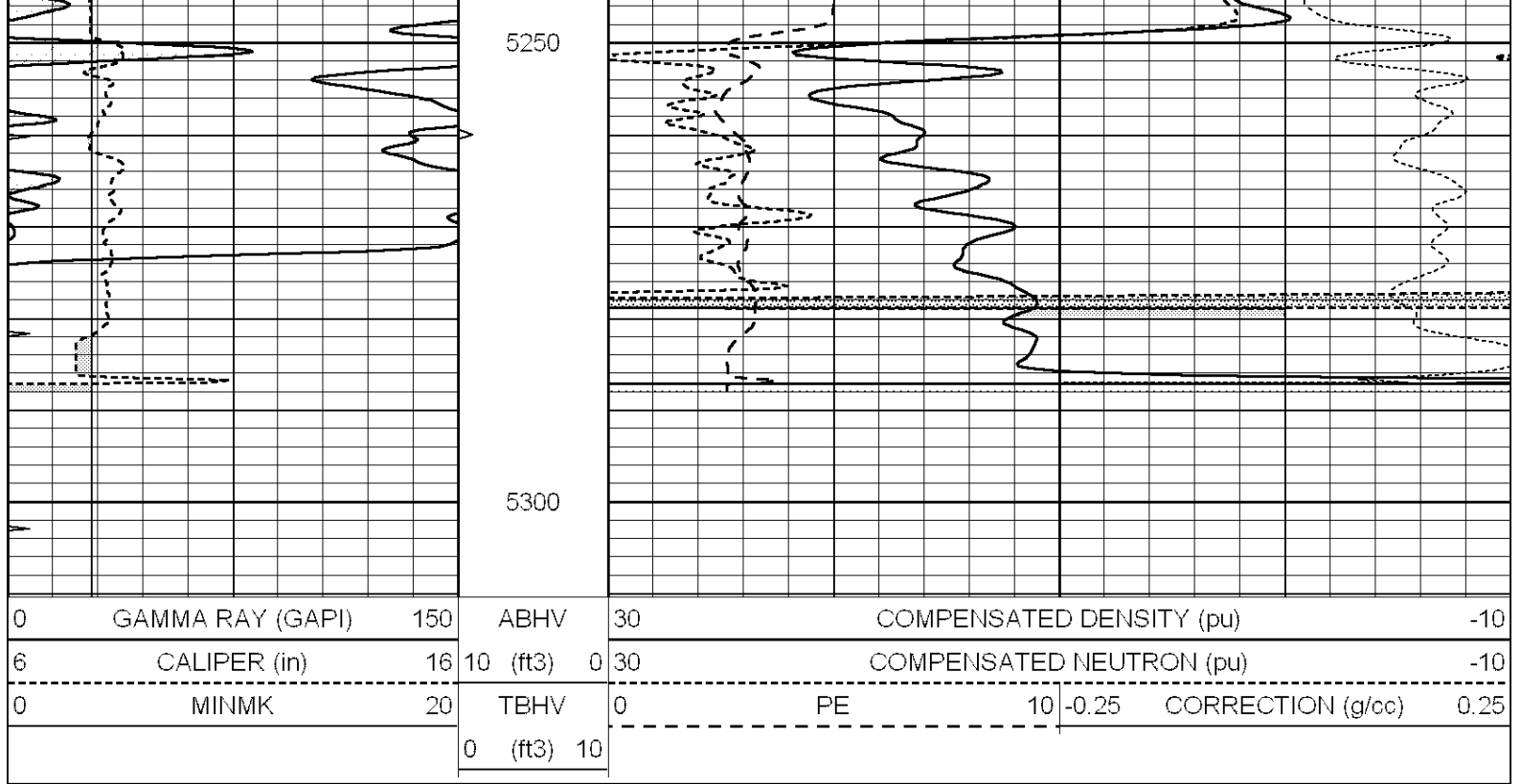
SUPERIOR  
Hays,  
Kansas

# REPEAT SECTION

Database File: 006622pe.db  
 Dataset Pathname: pass2.3  
 Presentation Format: ldt\_neu  
 Dataset Creation: Sun Mar 27 08:57:19 2011 by Calc Open-Cased 090629  
 Charted by: Depth in Feet scaled 1:240

0	GAMMA RAY (GAPI)	150	ABHV	30	COMPENSATED DENSITY (pu)		-10
6	CALIPER (in)	16	10 (ft3)	0	COMPENSATED NEUTRON (pu)		-10
0	MINMK	20	TBHV	0	PE	10	-0.25 CORRECTION (g/cc)
			0 (ft3)	10			0.25





### Calibration Report

Database File: 006622pe.db  
 Dataset Pathname: pass3.6  
 Dataset Creation: Sun Mar 27 11:36:53 2011

### Dual Induction Calibration Report

Serial-Model: DIL6-GEAR  
 Performed: Sat Mar 26 20:41:51 2011

Loop:	Readings				References		Results	
	Air	Loop			Air	Loop	m	b
Deep	0.001	0.644	V	0.000	400.000	mmho/m	660.000	-5.000
Medium	0.020	0.738	V	0.000	462.500	mmho/m	740.000	-23.000
Internal:	Zero	Cal		Zero	Cal		m	b
Deep	0.000	1.000	V	0.000	1.000	mmho/m	1.000	0.000
Medium	0.000	1.000	V	0.000	1.000	mmho/m	1.000	0.000

### Litho Density Calibration Report

Serial: 006 Model: PRB  
 Performed Sun Aug 15 09:48:41 2010

#### Litho Density Calibration

	Background	Magnesium	Aluminum	Sandstone	
Window 1	1686.6	11612.8	3932.0	12718.8	cps
Window 2	1531.4	9204.7	3267.8	9851.9	cps
Window 3	1198.3	4733.6	1952.5	4920.6	cps
Window 4	317.3	321.2	325.9	303.6	cps
Long Space	0.0	7673.3	1736.4	8320.4	cps
Short Space	1.7	2548.5	1657.2	2628.8	cps
Rho		1.7100	2.5900	1.3800	g/cc
Pe			2.5700	1.5500	

Rib Angle : 43.8 Rib Slope : 0.961 Density/Spine Ratio : 0.569

Spine Angle : 73.8 Spine Slope : 3.453 Spine Intercept : -18.1

Caliper

Low Ref	Readings	Reference	
High Ref	4.0	6.7	
	6.2	14.0	
	Gain: 3.2		Offset: -6.2

Compensated Neutron Calibration Report

Serial Number: NEU\_4I  
Tool Model: G

CALIBRATION

Detector	Readings	Target	Normalization
Short Space	996.00 cps	1000.00 cps	1.0000
Long Space	977.00 cps	1000.00 cps	1.0000

Gamma Ray Calibration Report

Serial Number:	GR4
Tool Model:	OPEN
Performed:	Sun Mar 27 08:30:25 2011
Calibrator Value:	200.0 GAPI
Background Reading:	0.0 cps
Calibrator Reading:	189.0 cps
Sensitivity:	1.4000 GAPI/cps