



SUPERIOR
Hays,
Kansas

**MICRO
LOG**

Company VINCENT OIL CORPORATION
Well STIMPERT #1-7
Field KINGSDOWN NORTHWEST
County FORD
State KANSAS

Company VINCENT OIL CORPORATION
Well STIMPERT #1-7
Field KINGSDOWN NORTHWEST
County FORD State KANSAS

Location: API # : 15-057-20720-0000
285' FNL & 2105' FEL
NE - NW - NW - NE
SEC 7 TWP 29S RGE 22W
Permanent Datum GROUND LEVEL Elevation 2512
Log Measured From KELLY BUSHING 12' A.G.L.
Drilling Measured From KELLY BUSHING
Other Services
CDL/CNL/PE
DIL/SONIC
Elevation
K.B. 2524
D.F. 2522
G.L. 2512

Date	3/27/11
Run Number	TWO
Depth Driller	5301
Depth Logger	5306
Bottom Logged Interval	5283
Top Log Interval	4100
Casing Driller	8 5/8" @ 696
Casing Logger	697
Bit Size	7 7/8"
Type Fluid in Hole	CHEMICAL MUD
Density / Viscosity	9.4/53
pH / Fluid Loss	10.0/8.8
Source of Sample	FLOWLINE
Rim @ Meas. Temp	.550 @ 70F
Rmf @ Meas. Temp	.413 @ 70F
Rmc @ Meas. Temp	.660 @ 70F
Source of Rmf / Rmc	MEASUREMENT
Rim @ BHT	.301 @ 128F
Time Circulation Stopped	5.5 HOURS
Time Logger on Bottom	8:00 P.M.
Maximum Recorded Temperature	128F
Equipment Number	0836
Location	HAYS, KANSAS
Recorded By	JEFF LUEBBERS
Witnessed By	JIM HALL

<<< Fold Here >>>

All interpretations are opinions based on inferences from electrical or other measurements and we cannot and do not guarantee the accuracy or correctness of any interpretation, and we shall not, except in the case of gross or willful negligence on our part, be liable or responsible for any loss, costs, damages, or expenses incurred or sustained by anyone resulting from any interpretation made by any of our officers, agents or employees. These interpretations are also subject to our general terms and conditions set out in our current Price Schedule.

Comments

THANK YOU FOR USING SUPERIOR WELL SERVICE HAYS, KANSAS (785) 628-6395
DIRECTIONS
KINGSDOWN, KS. & HWY 54, 1N. ON "RD. 125" TO "WILDFIRE RD.", 1/2W., S. INTO

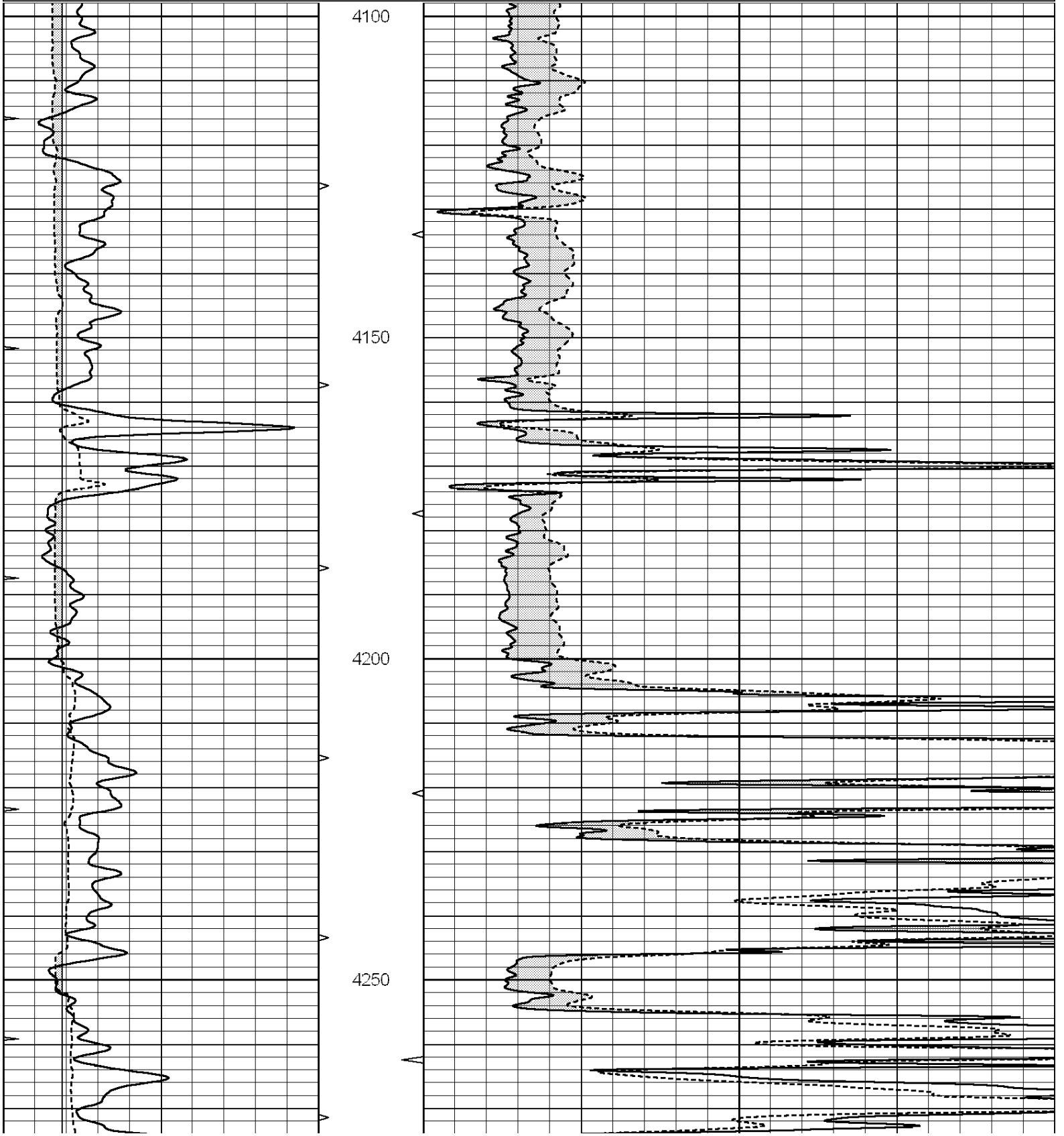


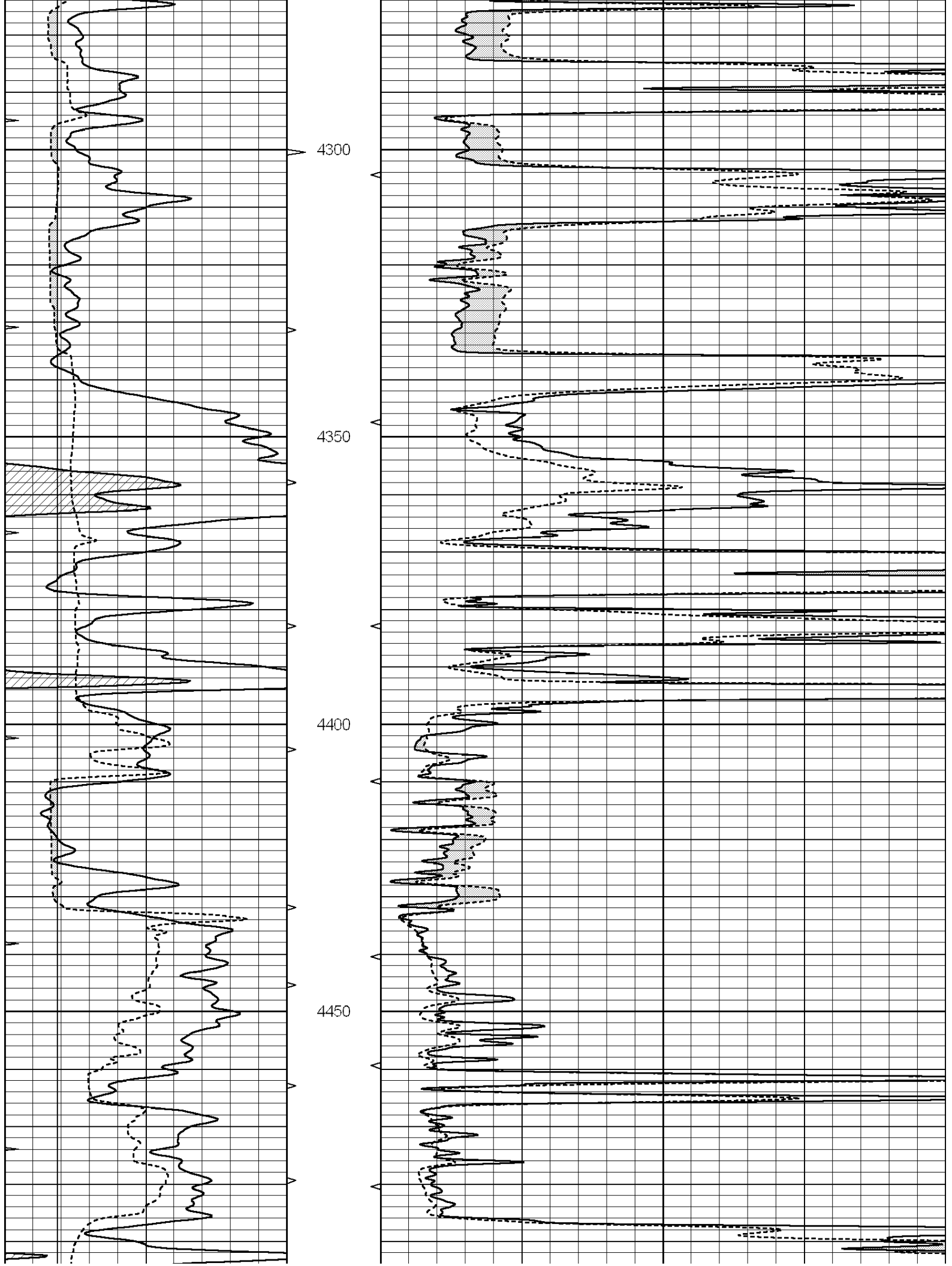
SUPERIOR
Hays,
Kansas

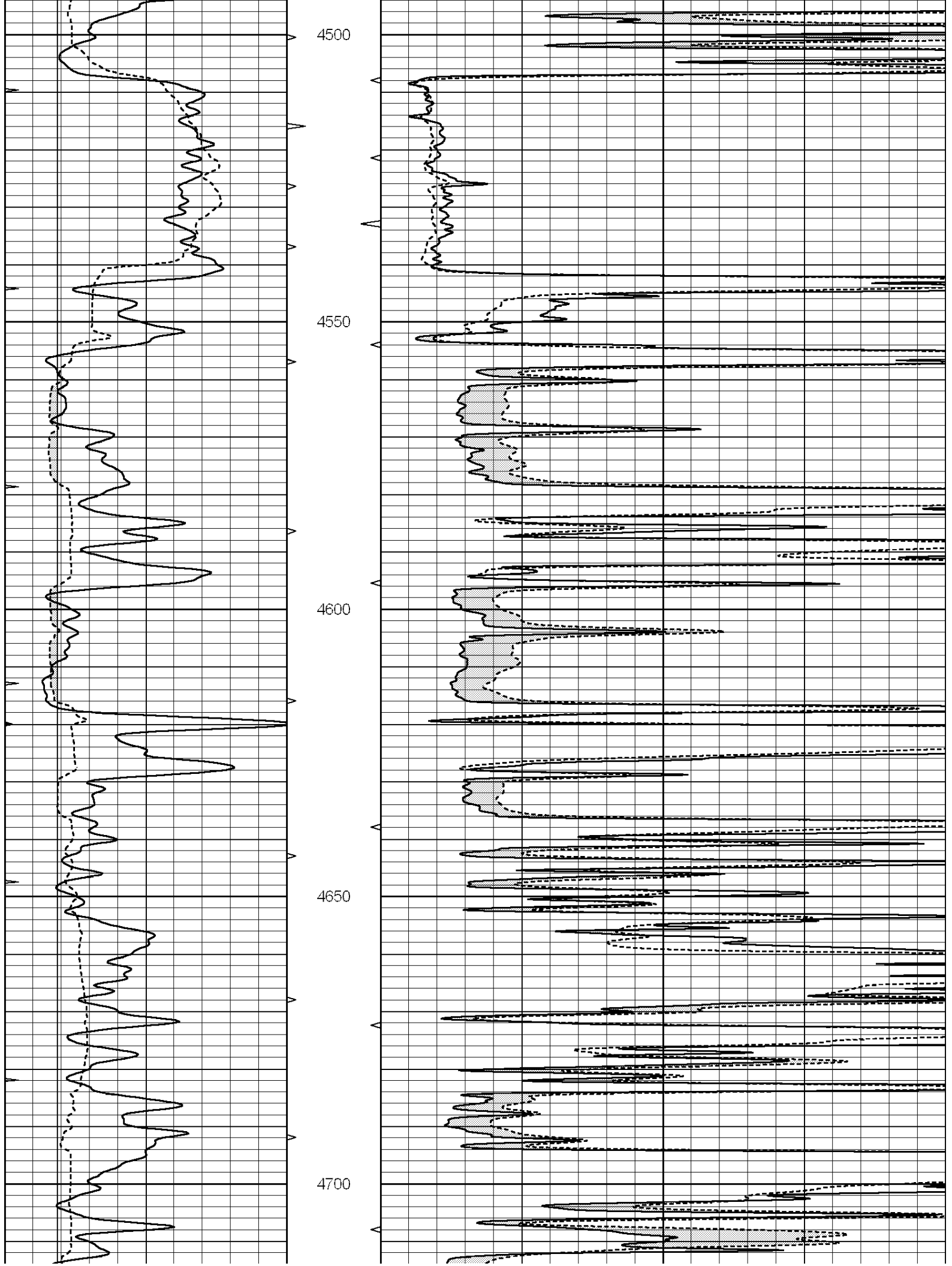
MAIN SECTION

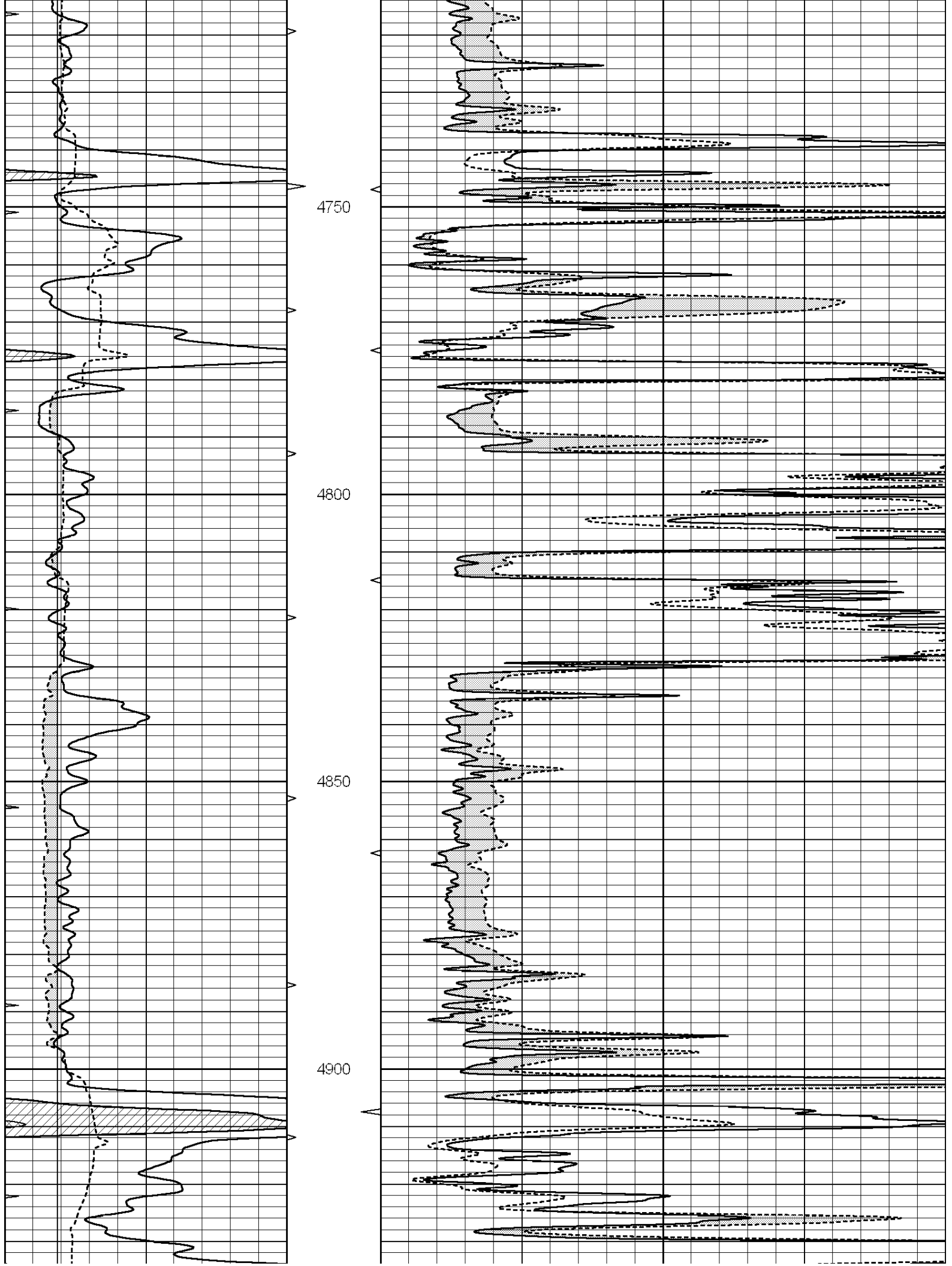
Database File: 006622pe.db
 Dataset Pathname: pass12.4
 Presentation Format: micro
 Dataset Creation: Sun Mar 27 16:03:44 2011
 Charted by: Depth in Feet scaled 1:240

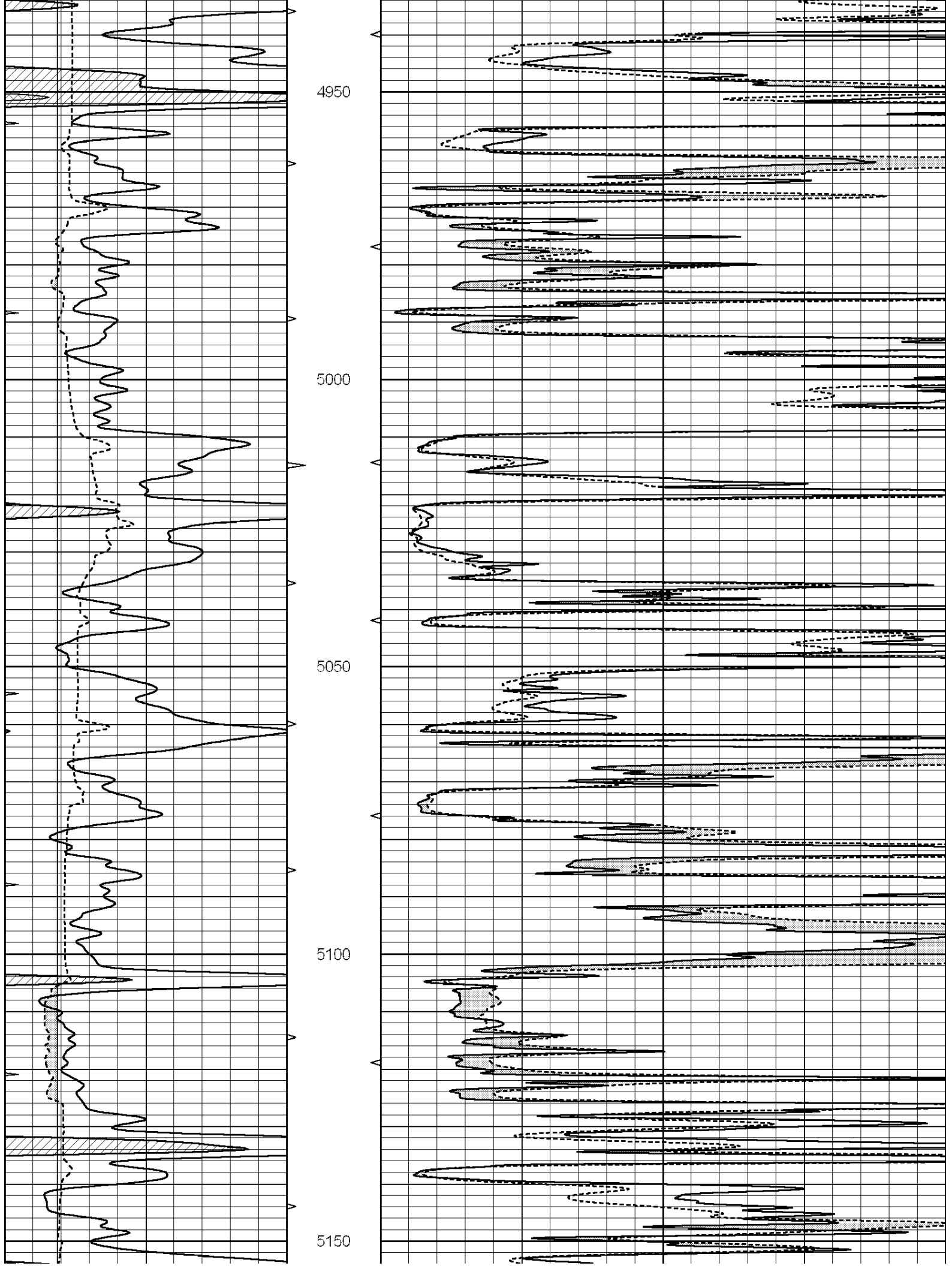
0	GAMMA RAY (GAPI)	150	ABHV	0	MEL1.5 (Ohm-m)	40
6	CALIPER (in)	16	10 (ft3)	0	MEL2.0 (Ohm-m)	40
0	MINMK	20	TBHV			
			0 (ft3)	10		

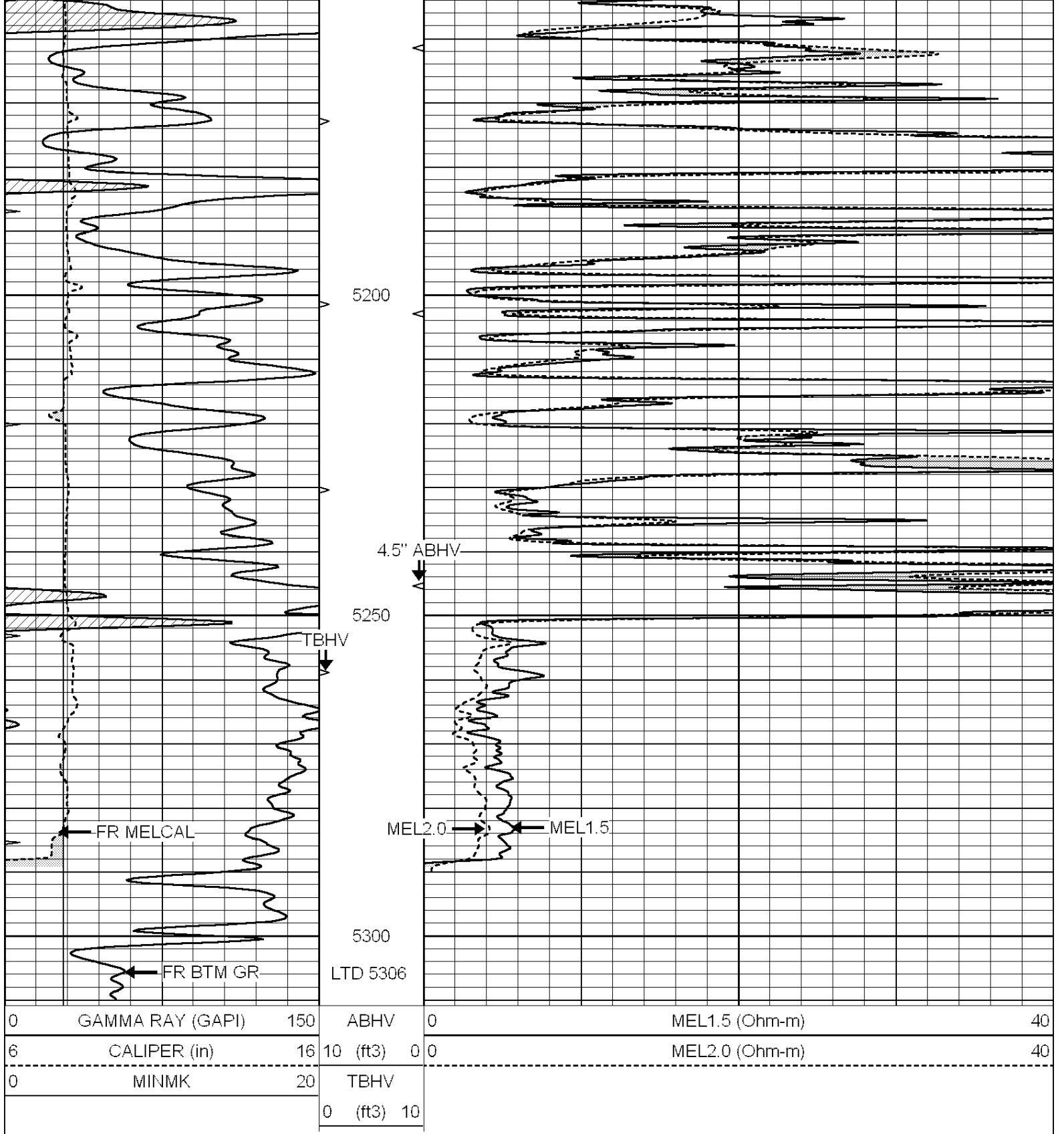










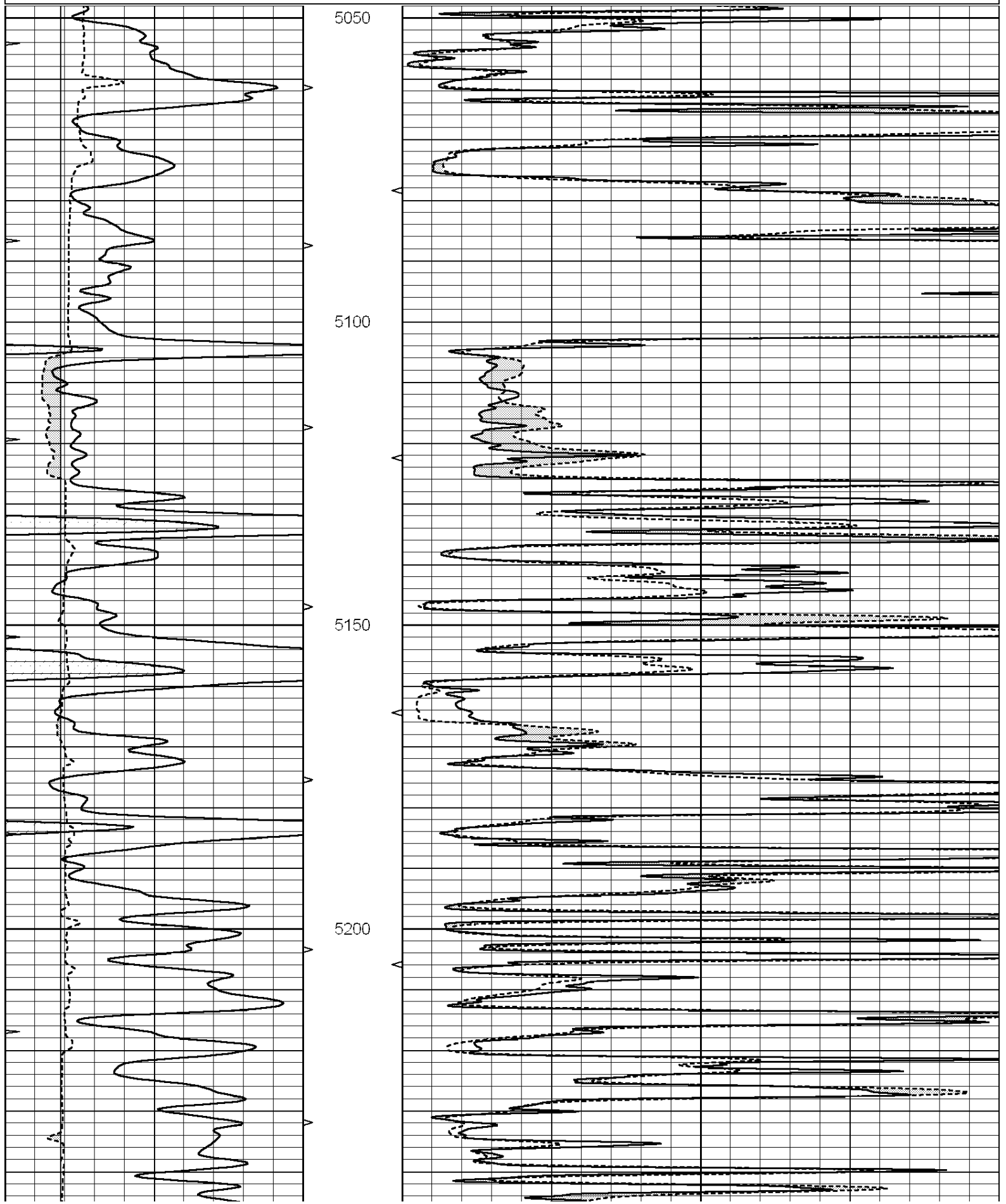


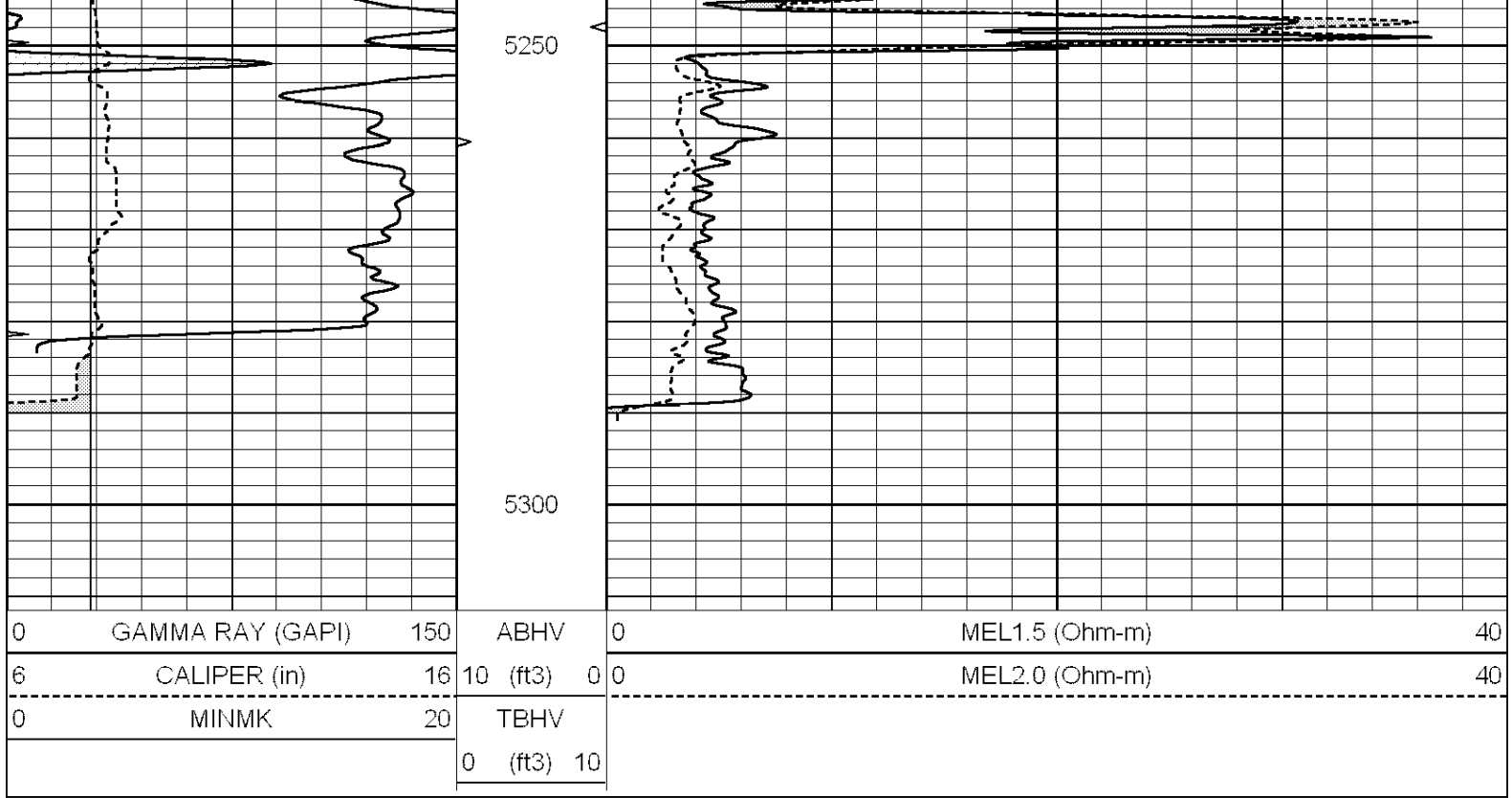
SUPERIOR
Hays,
Kansas

REPEAT SECTION

Database File: 006622pe.db
 Dataset Pathname: pass11.4
 Presentation Format: micro
 Dataset Creation: Sun Mar 27 15:26:05 2011 by Calc Open-Cased 090629
 Charted by: Depth in Feet scaled 1:240

0	GAMMA RAY (GAPI)	150	ABHV	0	MEL1.5 (Ohm-m)	40
6	CALIPER (in)	16	10 (ft3)	0	MEL2.0 (Ohm-m)	40
0	MINMK	20	TBHV			
			0 (ft3)	10		





Calibration Report

Database File: 006622pe.db
 Dataset Pathname: pass12.4
 Dataset Creation: Sun Mar 27 16:03:44 2011

MICRO Calibration Report

Serial Number:	2	
Tool Model:	PROBE	
Performed:	Sun Mar 27 15:18:06 2011	
Caliper Calibration:	Gain=4.684	Offset=2.454
References	Low Cal 6.000	High Cal 13.500
Readings	0.757	2.358
1.5" Calibration:	Gain=43.000	Offset=-0.500
References	Low Cal 0.000	High Cal 20.000
Readings	0.065	1.210
2" Calibration:	Gain=52.000	Offset=0.500
References	Low Cal 0.000	High Cal 20.000
Readings	0.012	1.043

Gamma Ray Calibration Report

Serial Number:	GR4	
Tool Model:	OPEN	
Performed:	Sun Mar 27 15:18:18 2011	
Calibrator Value:	200.0	GAPI
Background Reading:	0.0	cps
Calibrator Reading:	189.0	cps

Sensitivity:

1.1500

GAPI/cps