



**Borehole Compensated
Sonic Log**

DIGITAL LOG (785) 625-3858

API No.	15-039-21,134-00-00
Company	Murfin Drilling Company, Inc.
Well	Fox 'A' No. 2-34
Field	Altory
County	Decatur
State	Kansas
Location	NW - SE - NW - NW 900' FNL & 900' FWL
Sec: 34	Twp: 3 S Rge: 27 W
Permanent Datum	Ground Level
Log Measured From	Kelly Bushing
Drilling Measured From	Kelly Bushing
Elevation	2607
Other Services	CNL/CDL MEL/DIL
Elevation	K.B. 2612 D.F. 2607 G.L. 2607

Date	6/30/2011
Run Number	Two
Type Log	BHC Sonic
Depth Driller	3800
Depth Logger	3801
Bottom Logged Interval	3790
Top Logged Interval	200
Type Fluid In Hole	Chemical
Salinity, PPM CL	3000
Density	8.9
Level	Full
Max. Rec. Temp. F	114
Operating Rig Time	5 Hours
Equipment -- Location	15 Days
Recorded By	B. Becker
Witnessed By	Brad Rine

Borehole Record				Casing Record			
Run No.	Bit	From	To	Size	Wgt.	From	To
1	12.25	00	219	8.625	24#	00	219
2	7.875	219	3800				

<<< Fold Here >>>

All interpretations are opinions based on inferences from electrical or other measurements and we cannot and do not guarantee the accuracy or correctness of any interpretation, and we shall not, except in the case of gross or willful negligence on our part, be liable or responsible for any loss, costs, damages, or expenses incurred or sustained by anyone resulting from any interpretation made by any of our officers, agents or employees. These interpretations are also subject to our general terms and conditions set out in our current Price Schedule.

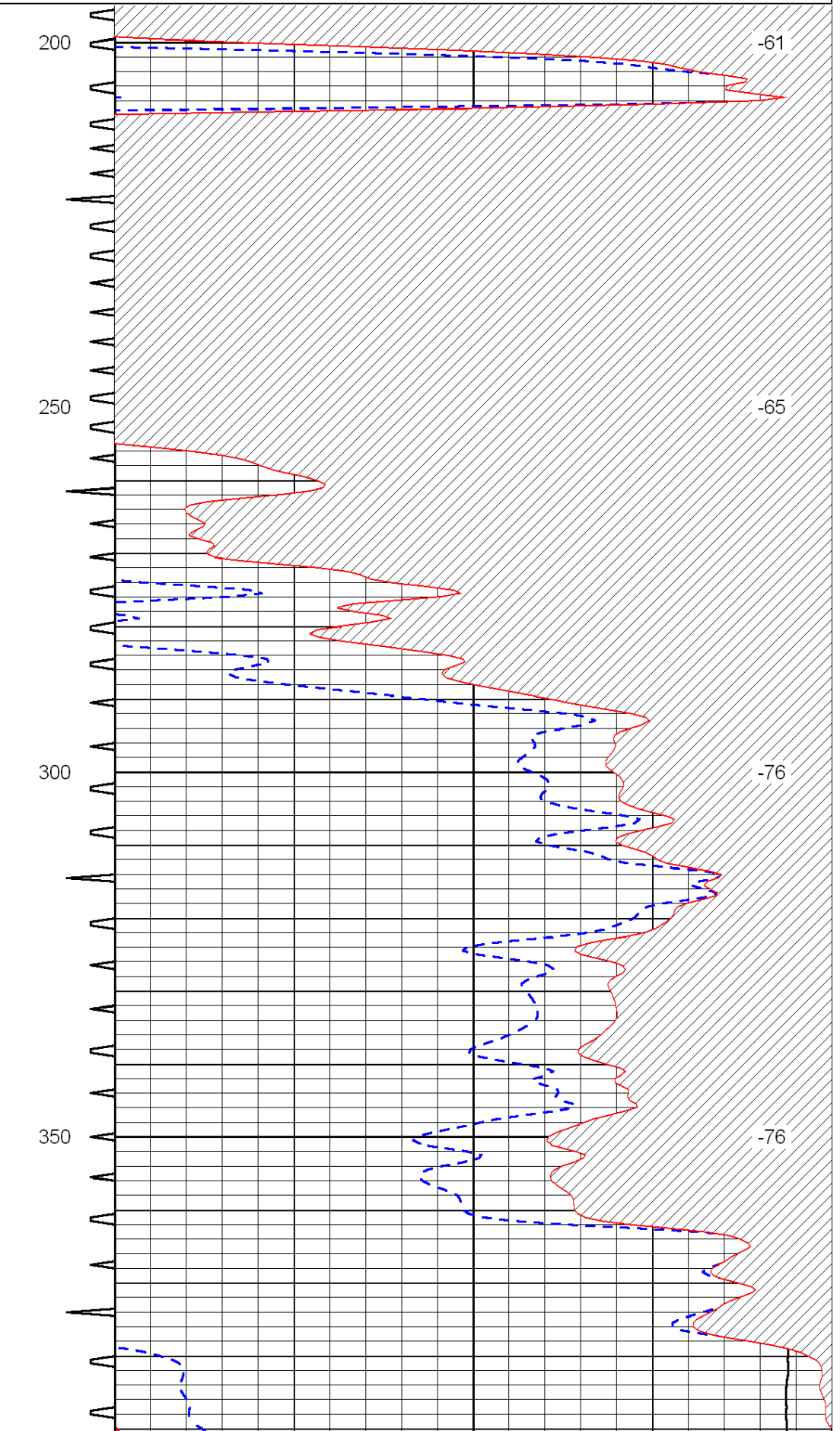
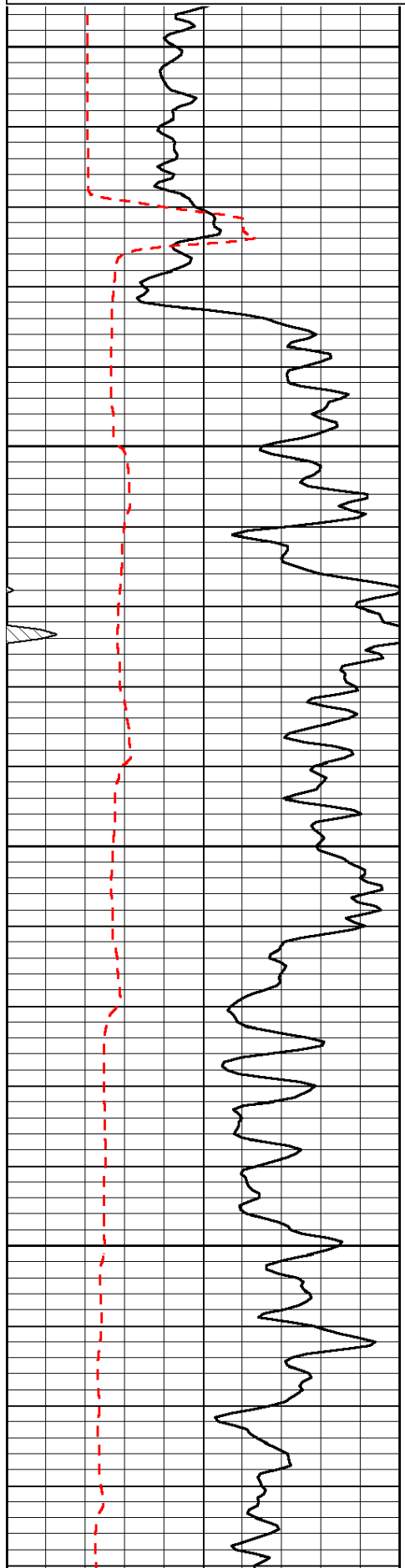
Comments

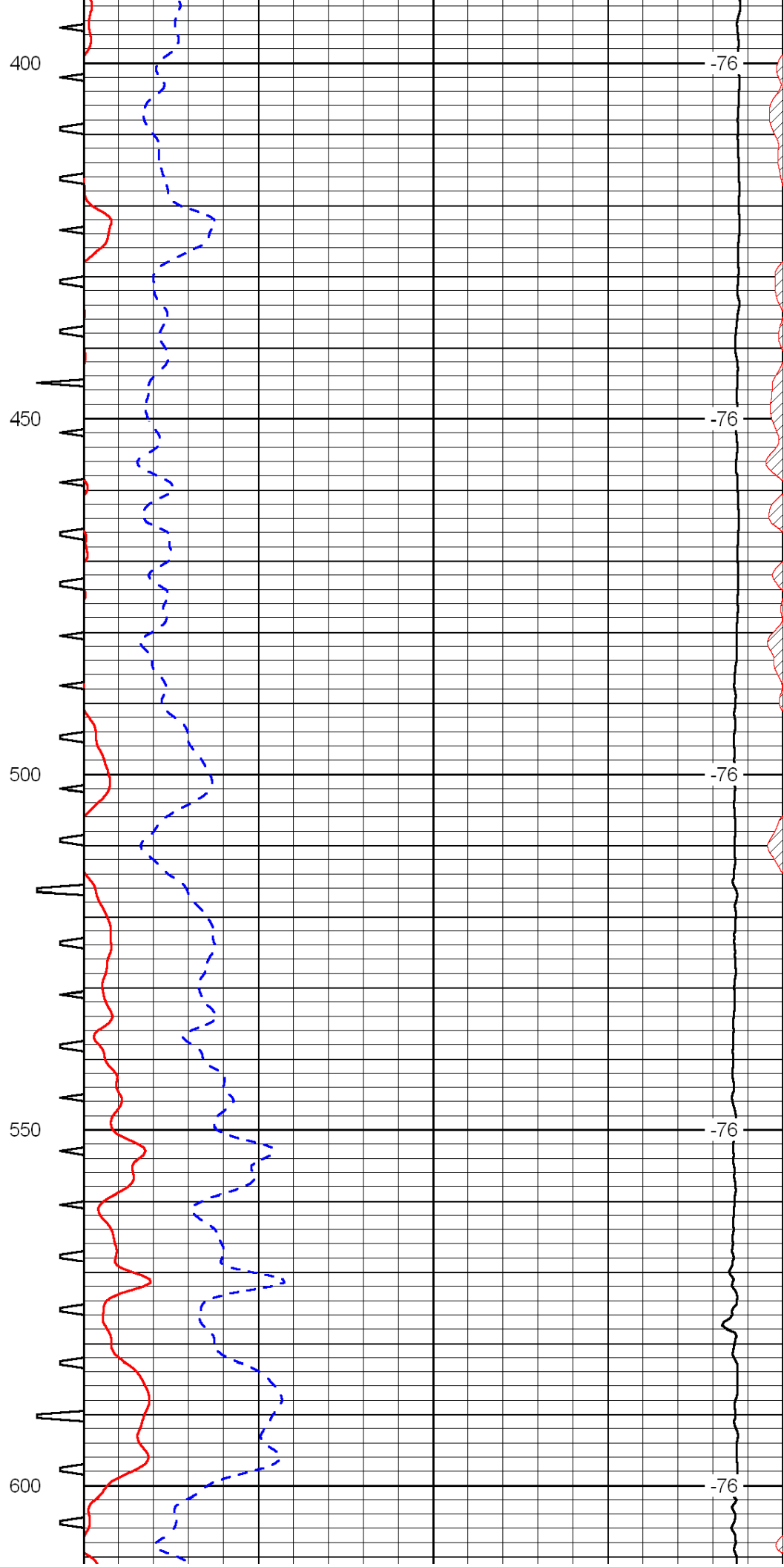
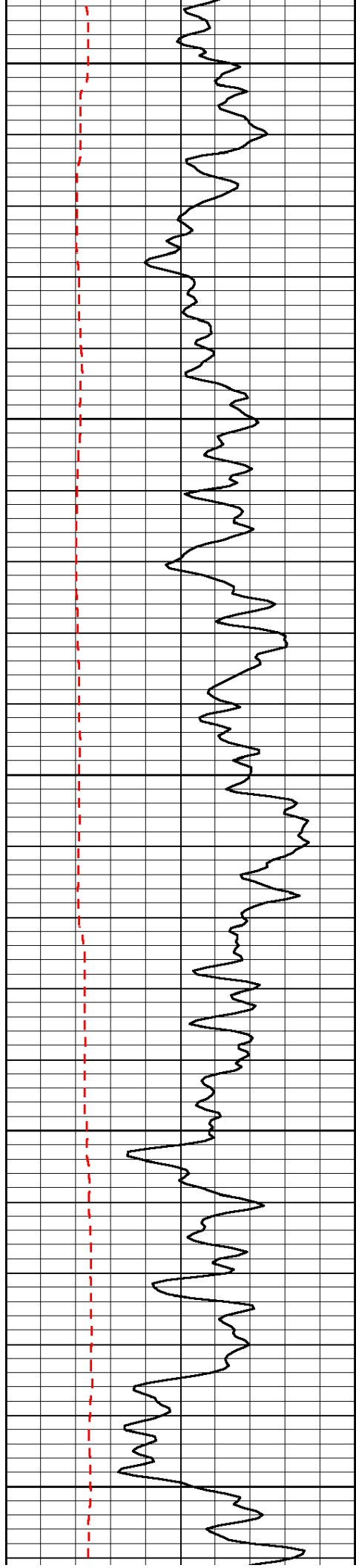
Thank you for using Log-Tech, Inc.
(785) 625-3858

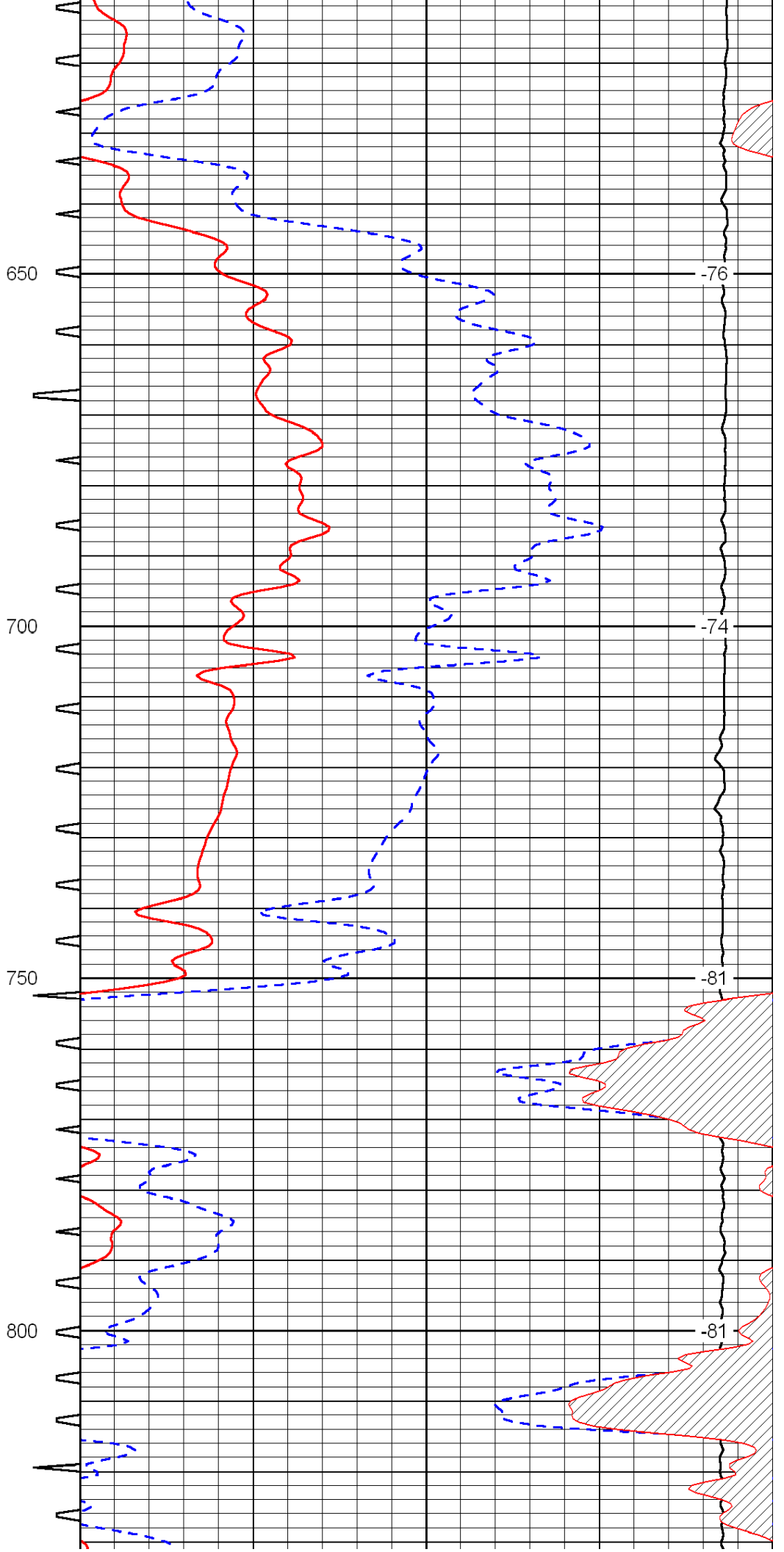
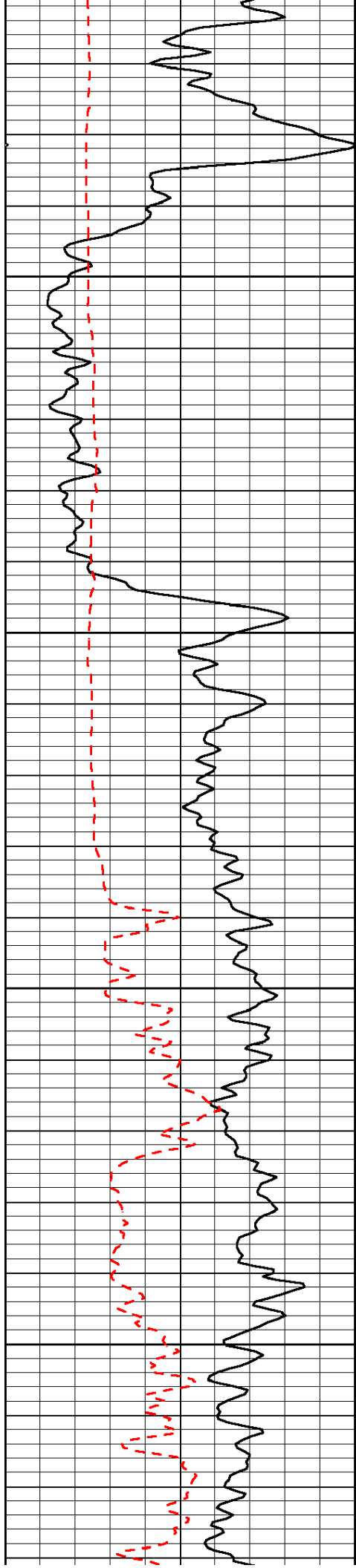
Dresden, Ks; 10-1/2 North; 4 East;
1/3 South; East Into

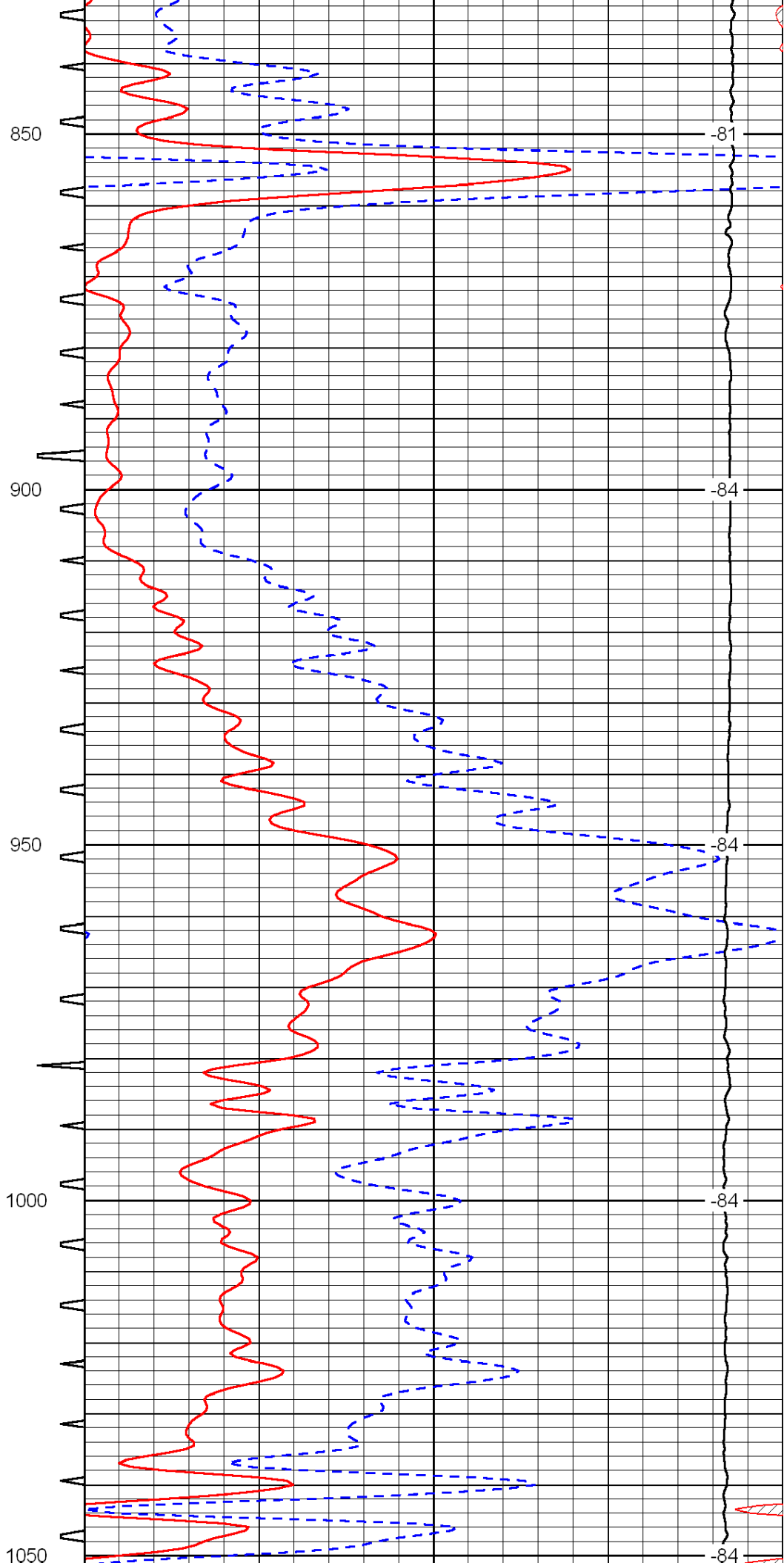
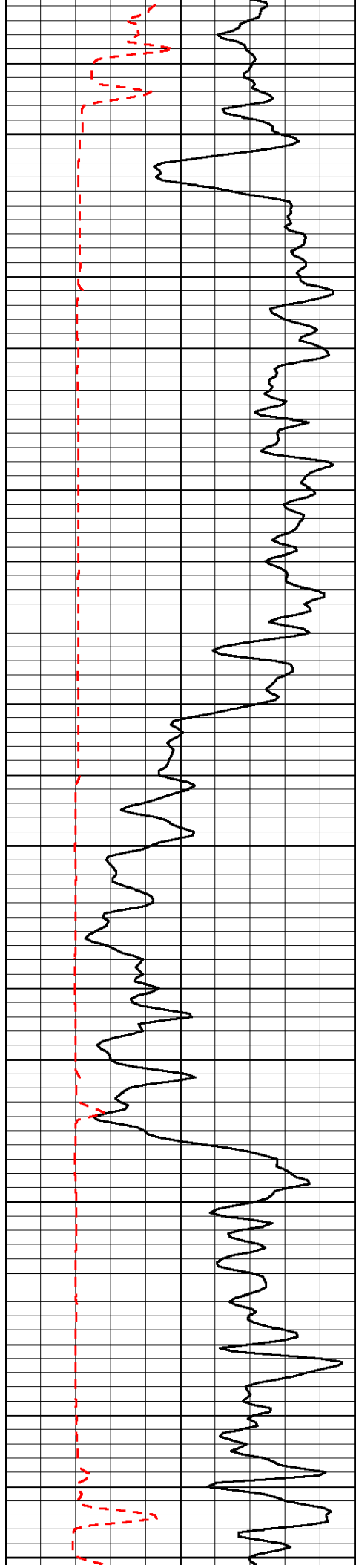
Database File: c:\warrior\data\murfin_fox 'a' no. 2-34\murfinhd.db
 Dataset Pathname: DIL\murfstk
 Presentation Format: sonic
 Dataset Creation: Thu Jun 30 13:06:53 2011
 Charted by: Depth in Feet scaled 1:240

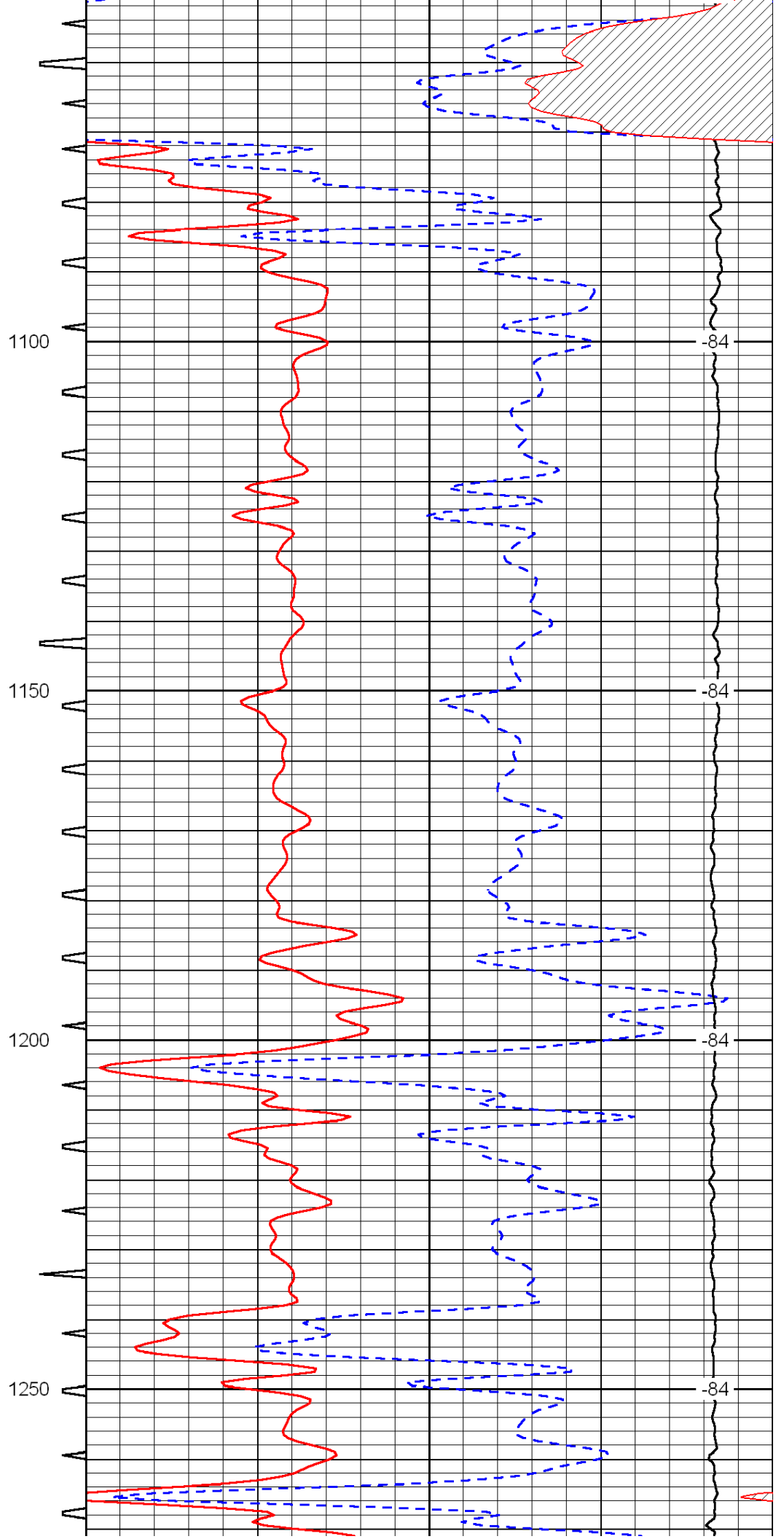
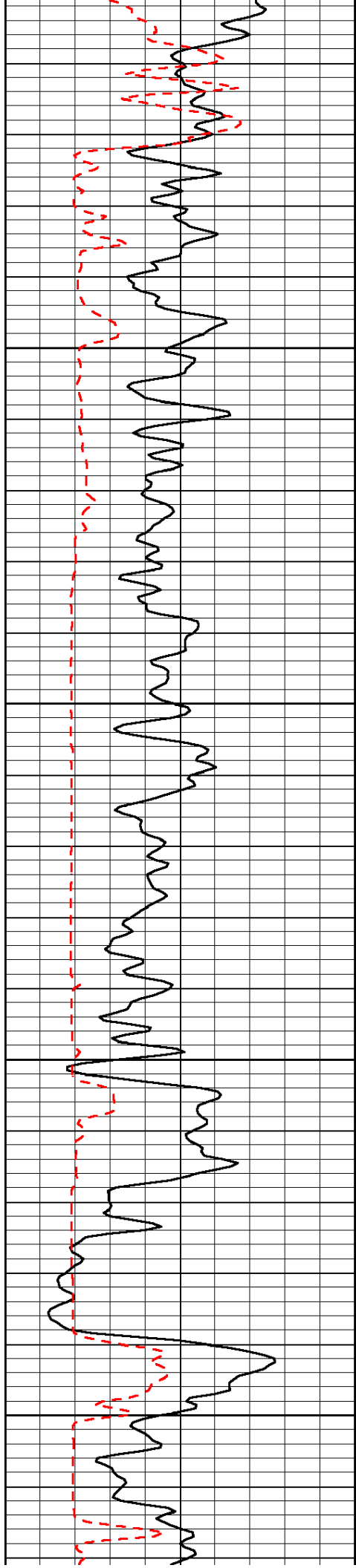
0	Gamma Ray	150	Sonic Int	140	Delta Time (usec/ft)	40
150	Gamma Ray	300	5	0	SPOR	-10
6	Caliper (GAPI)	16		15000	LTEN (lb)	0
						LSPD

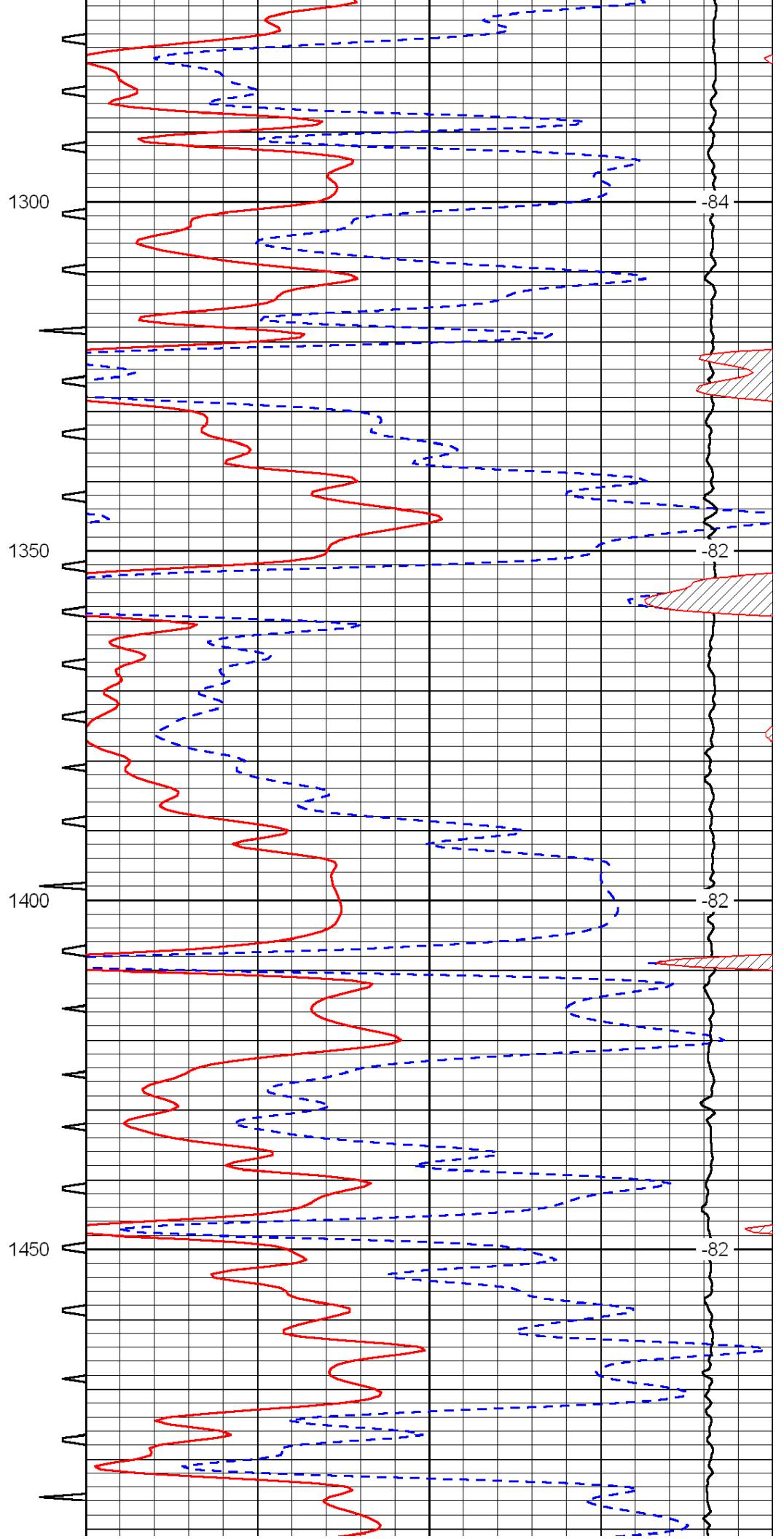
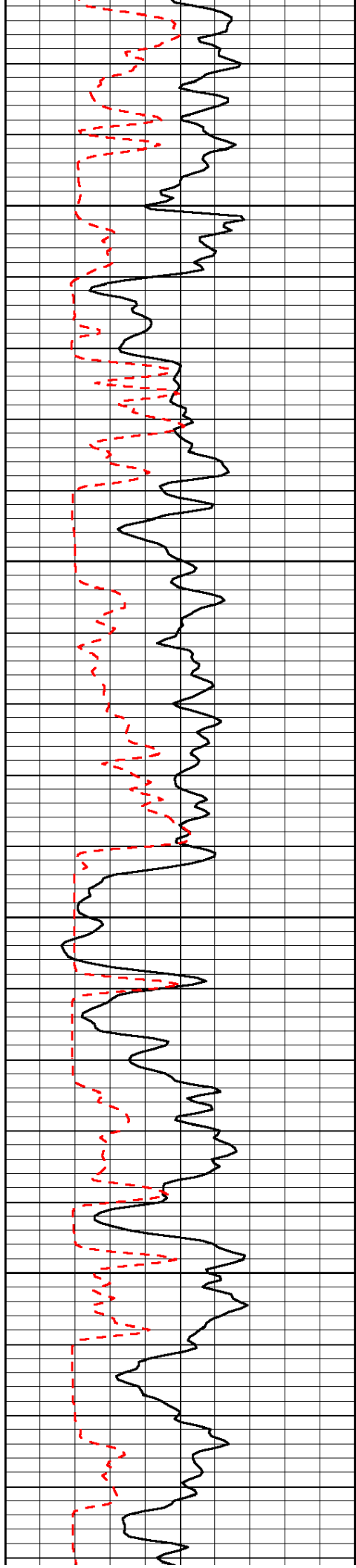


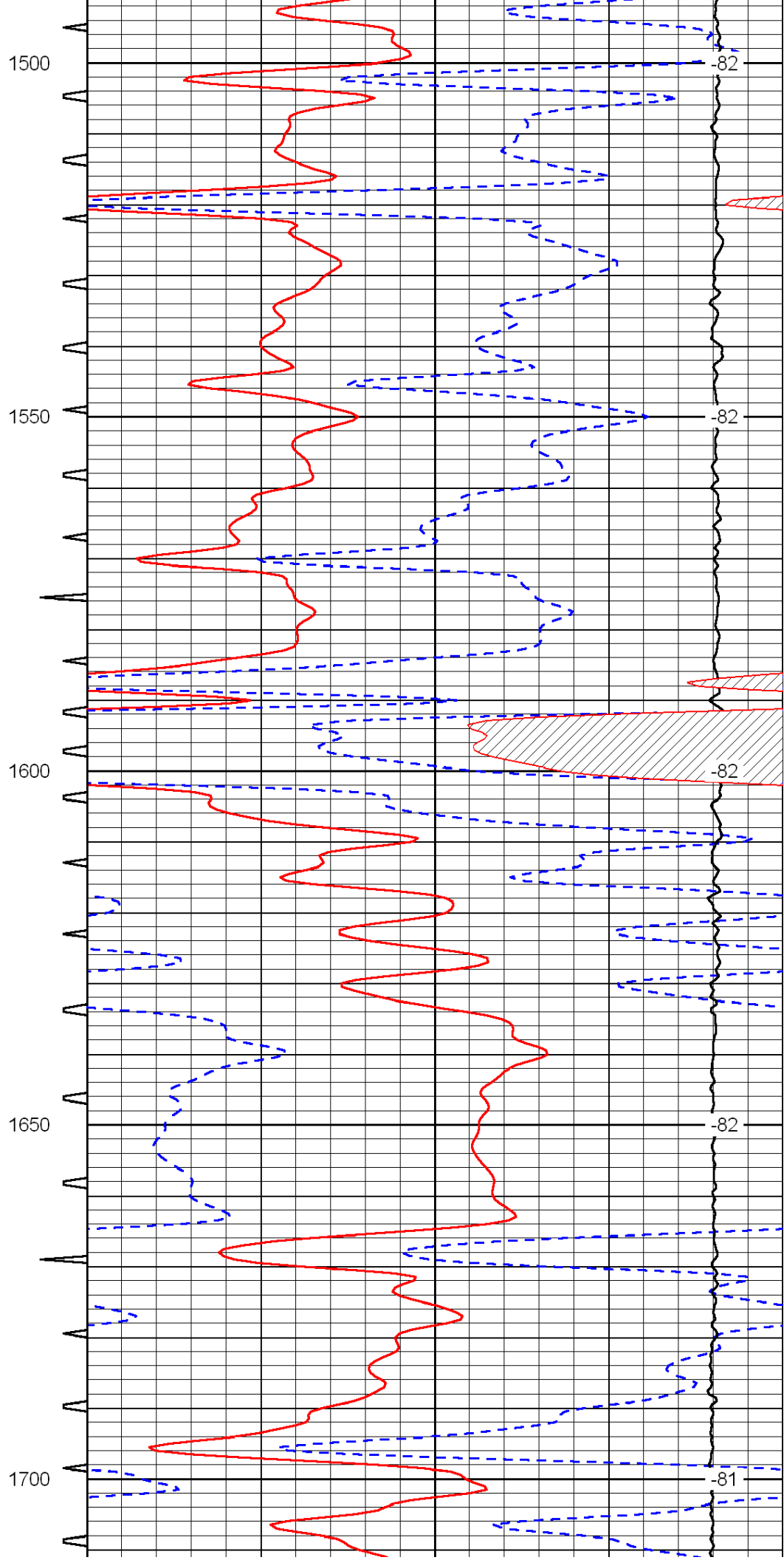
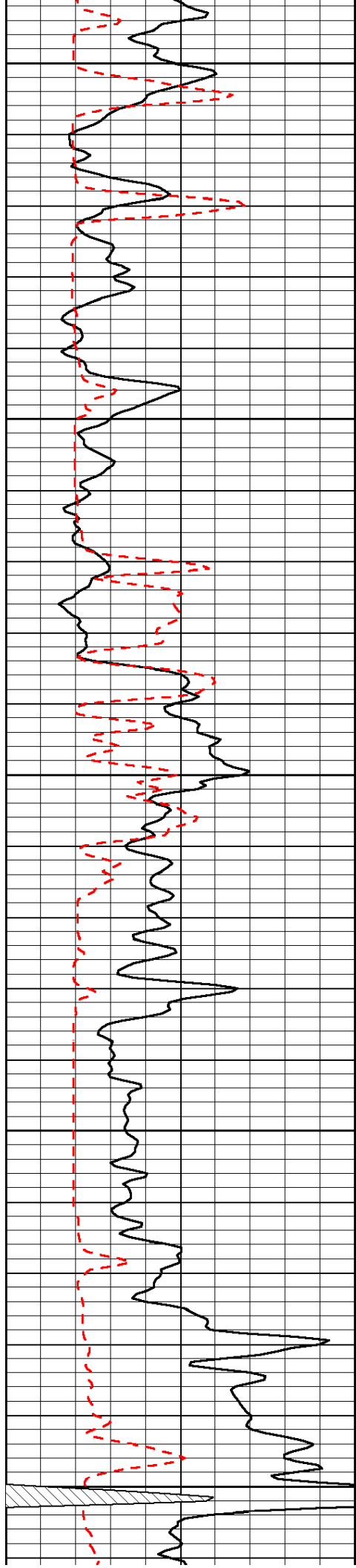


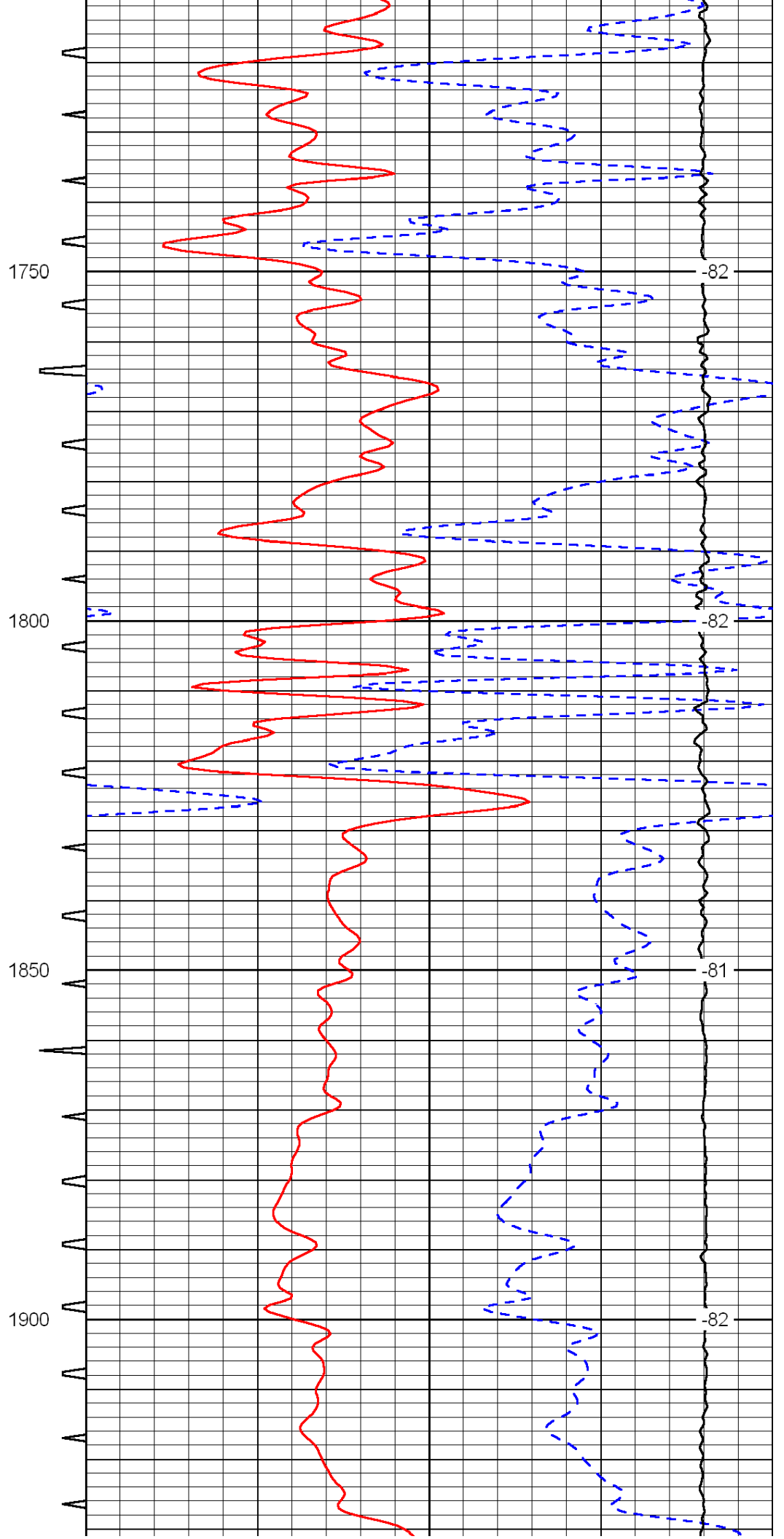
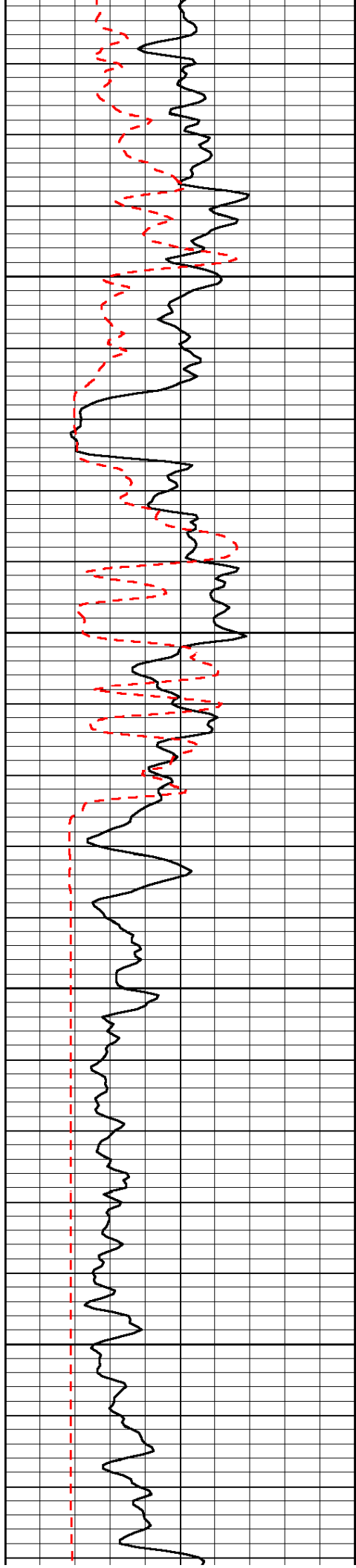


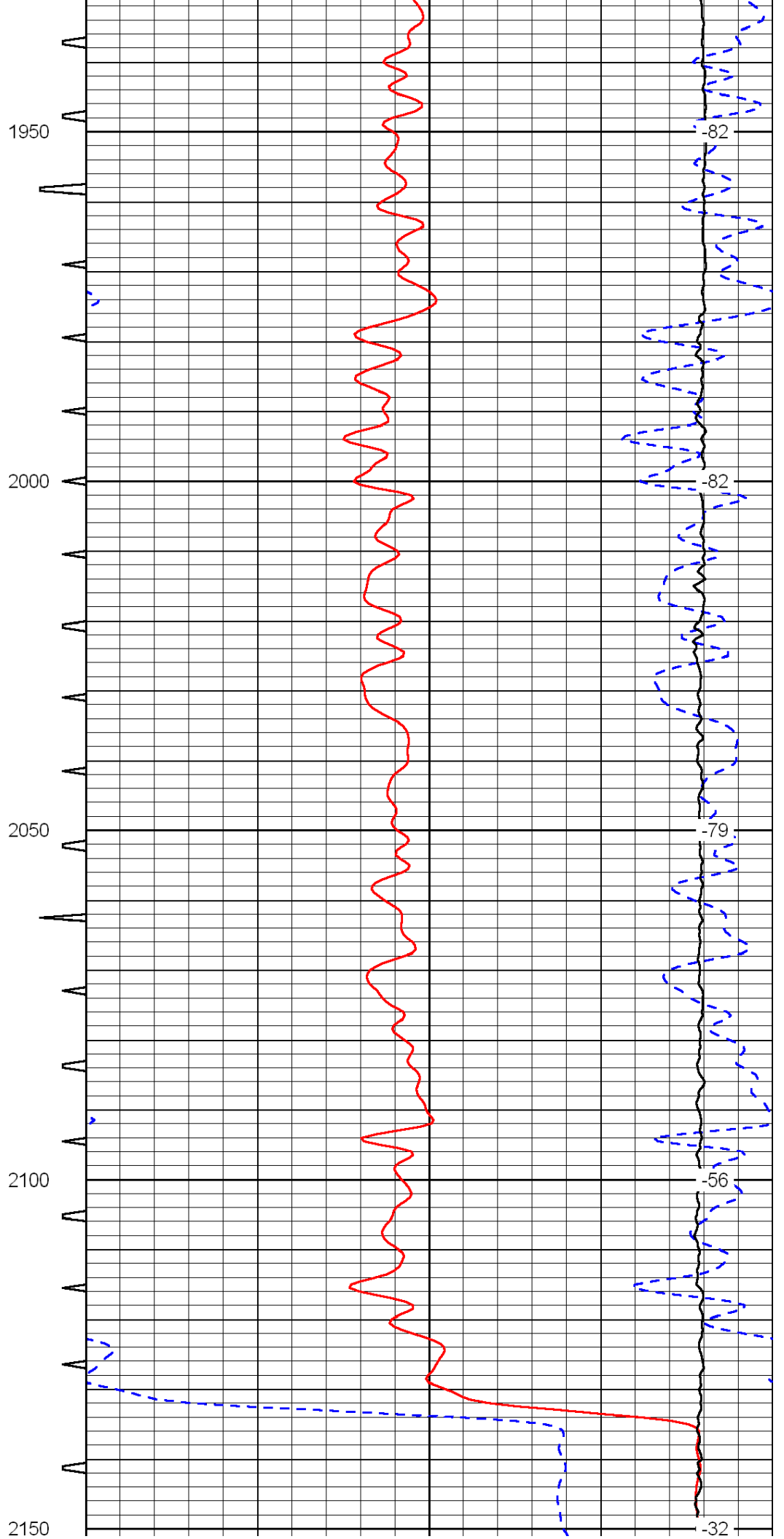
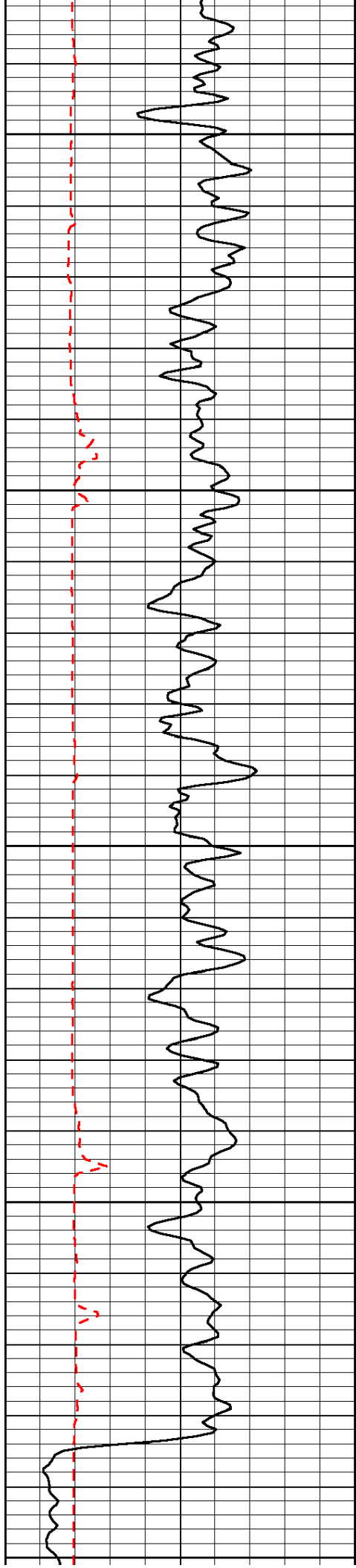


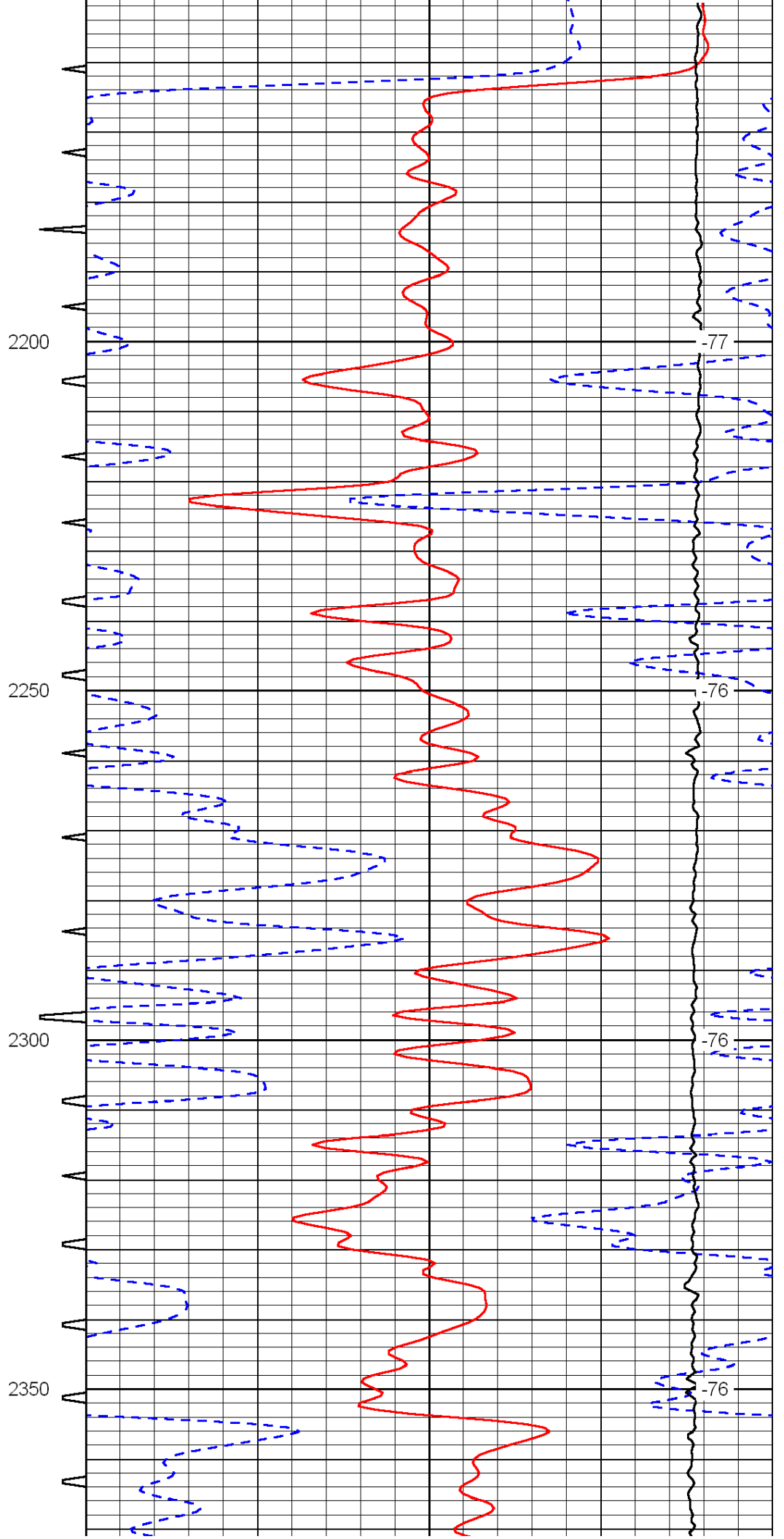
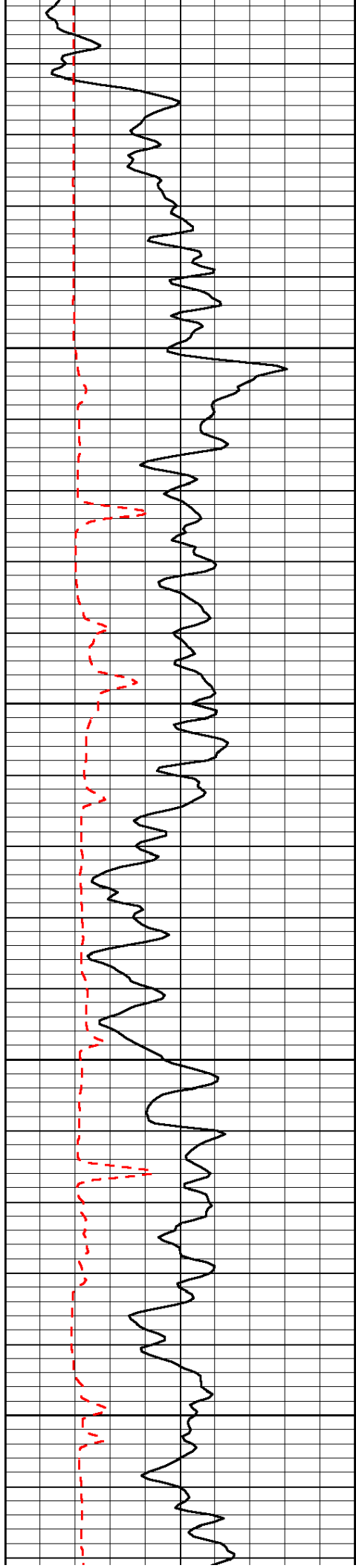


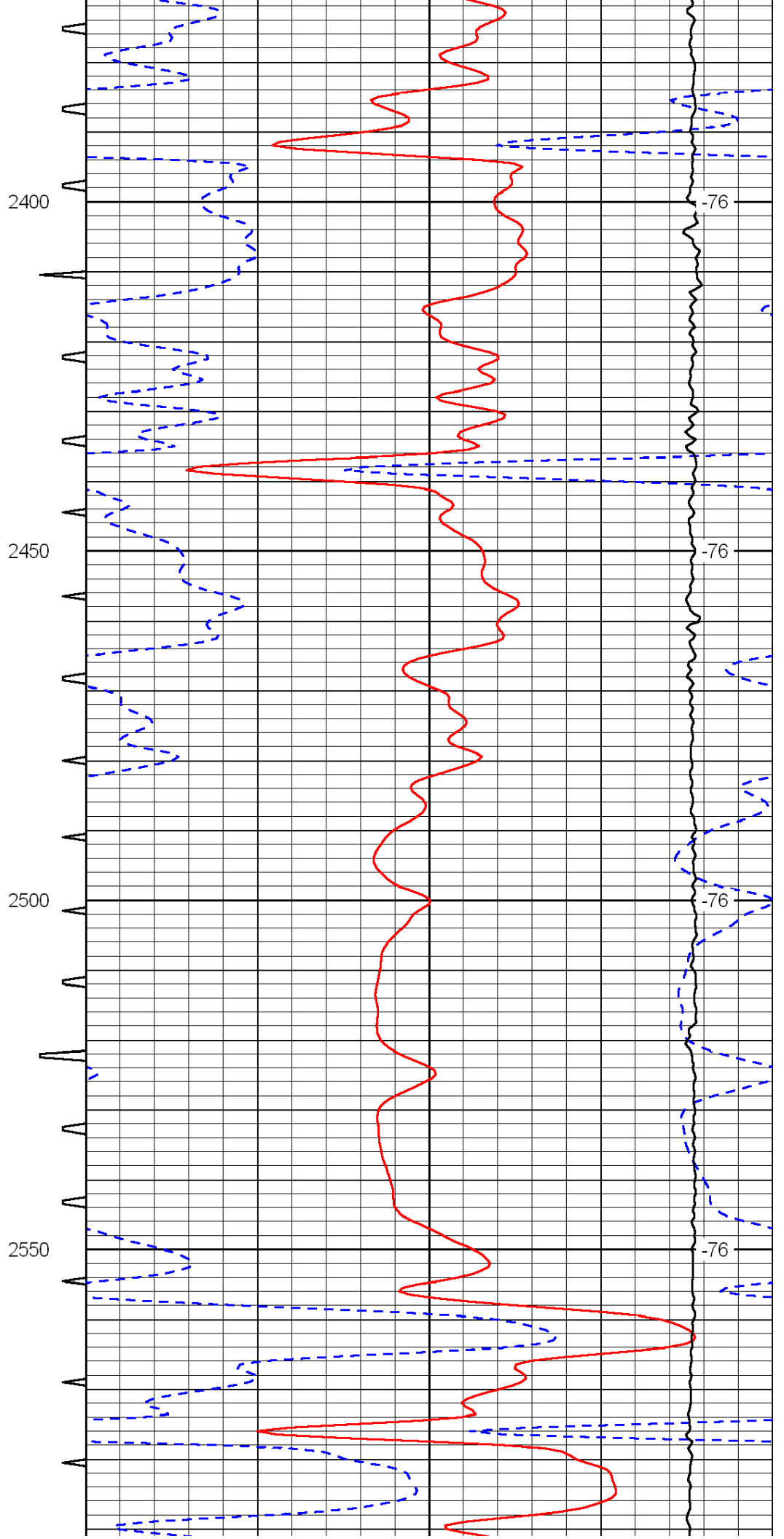
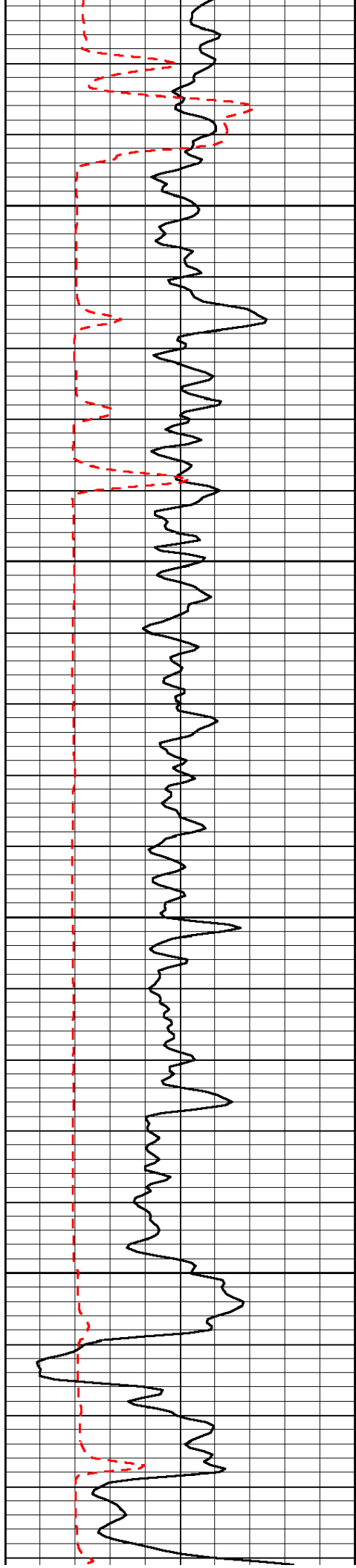


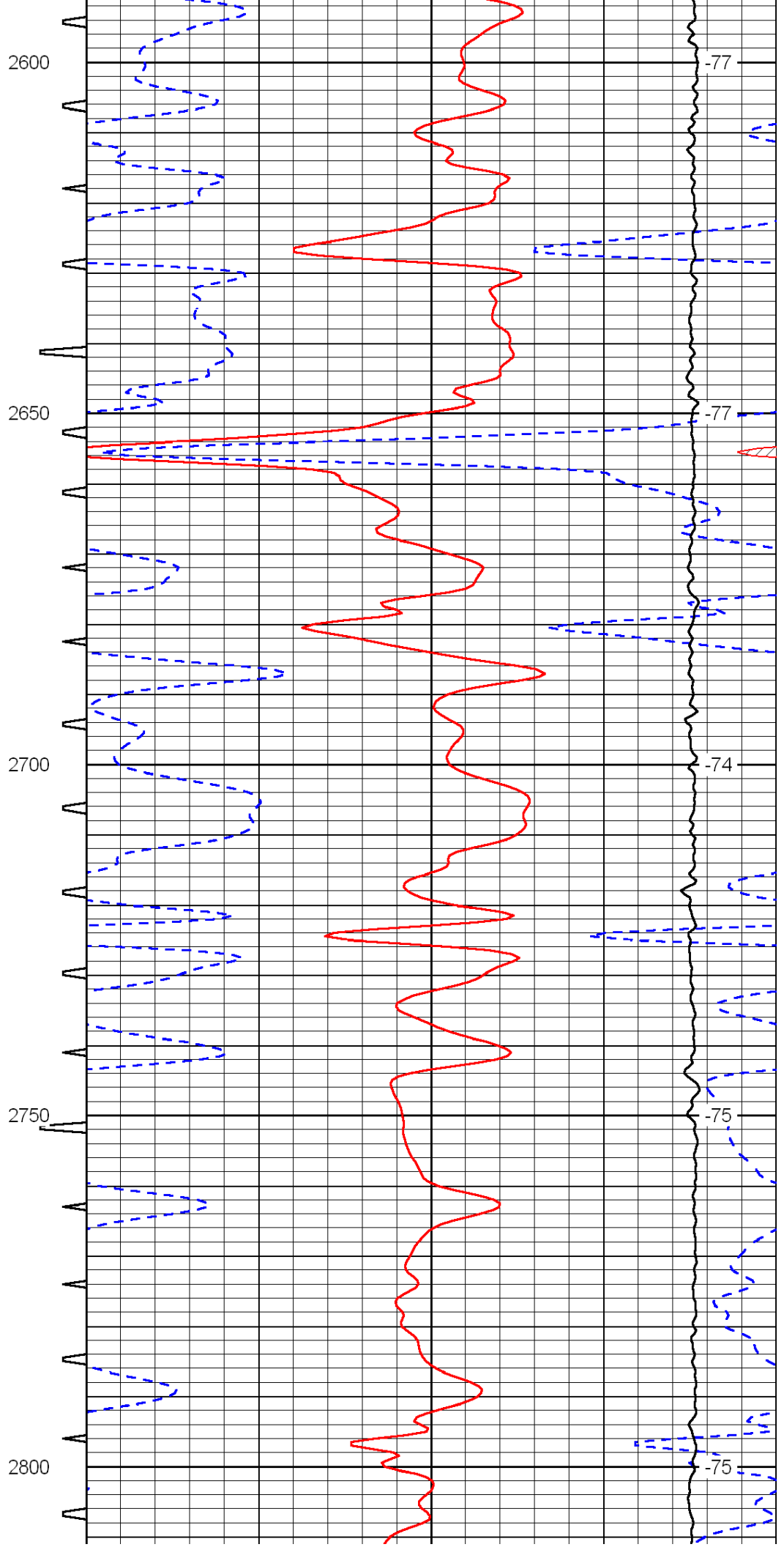
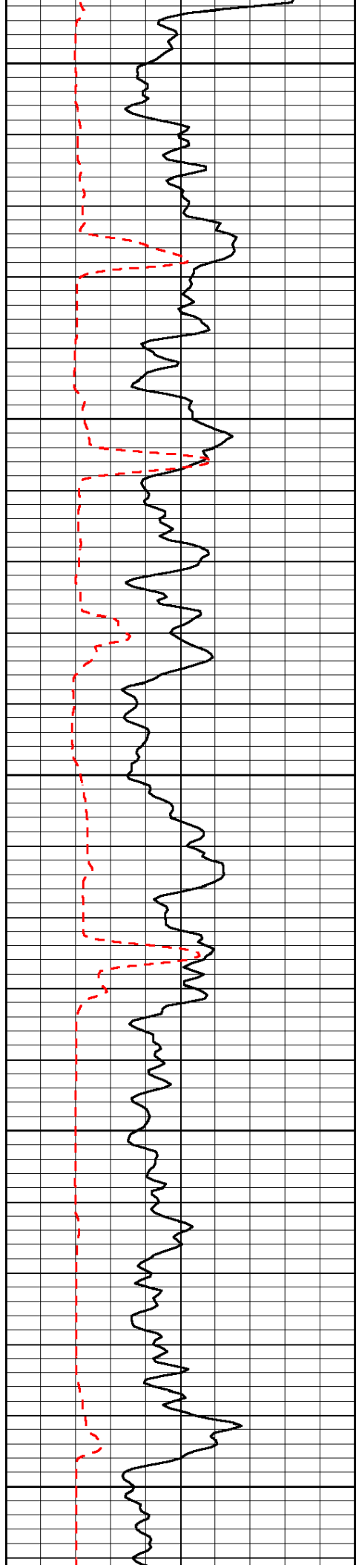


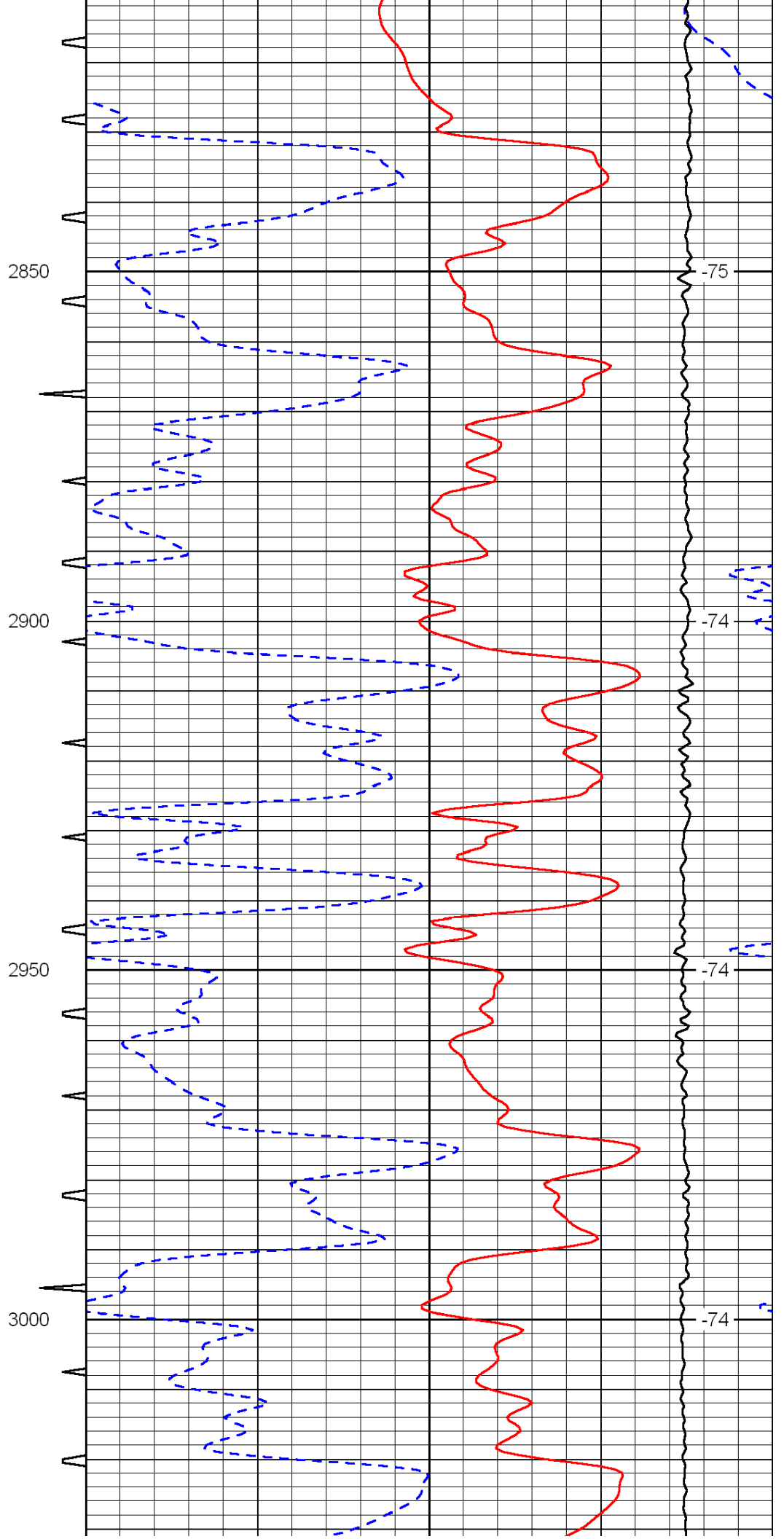
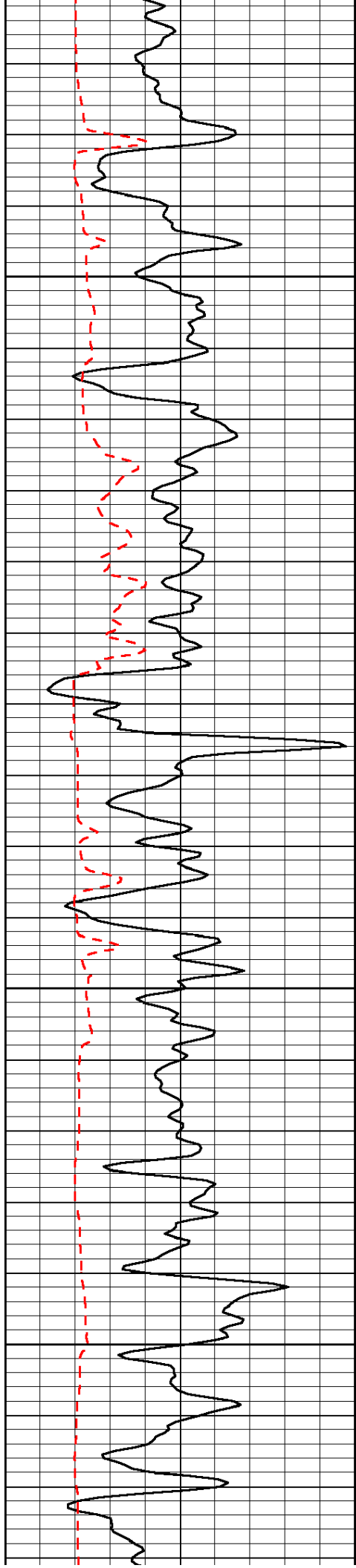


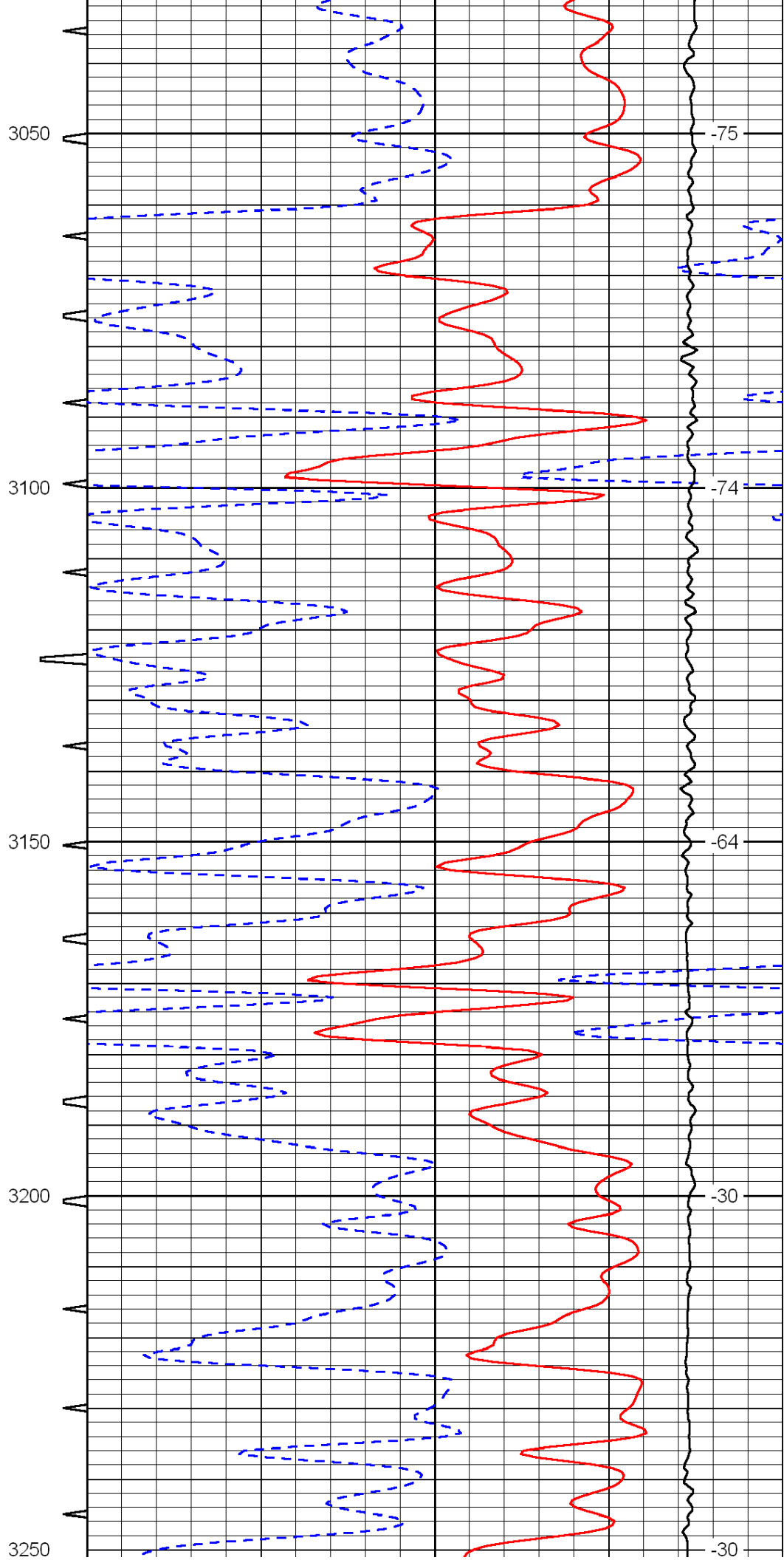
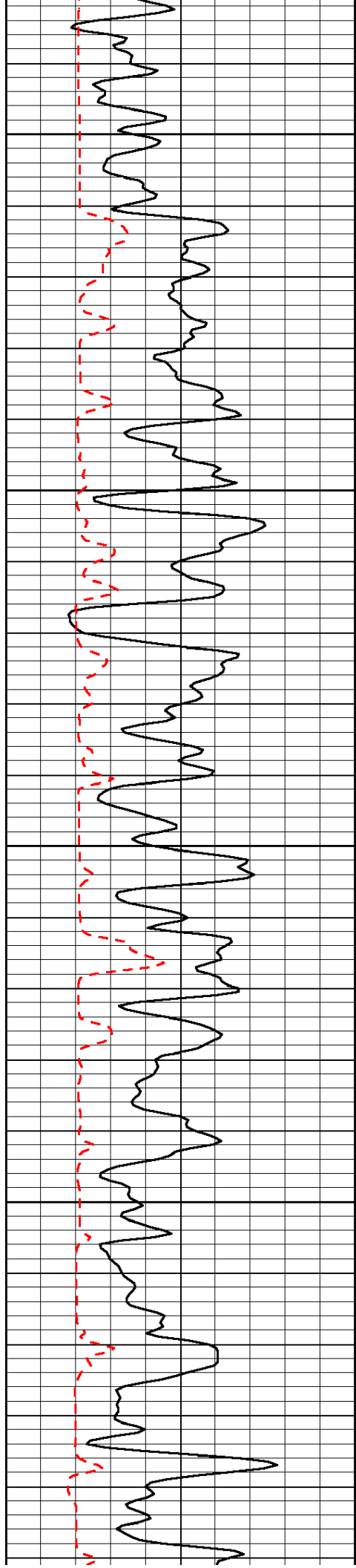


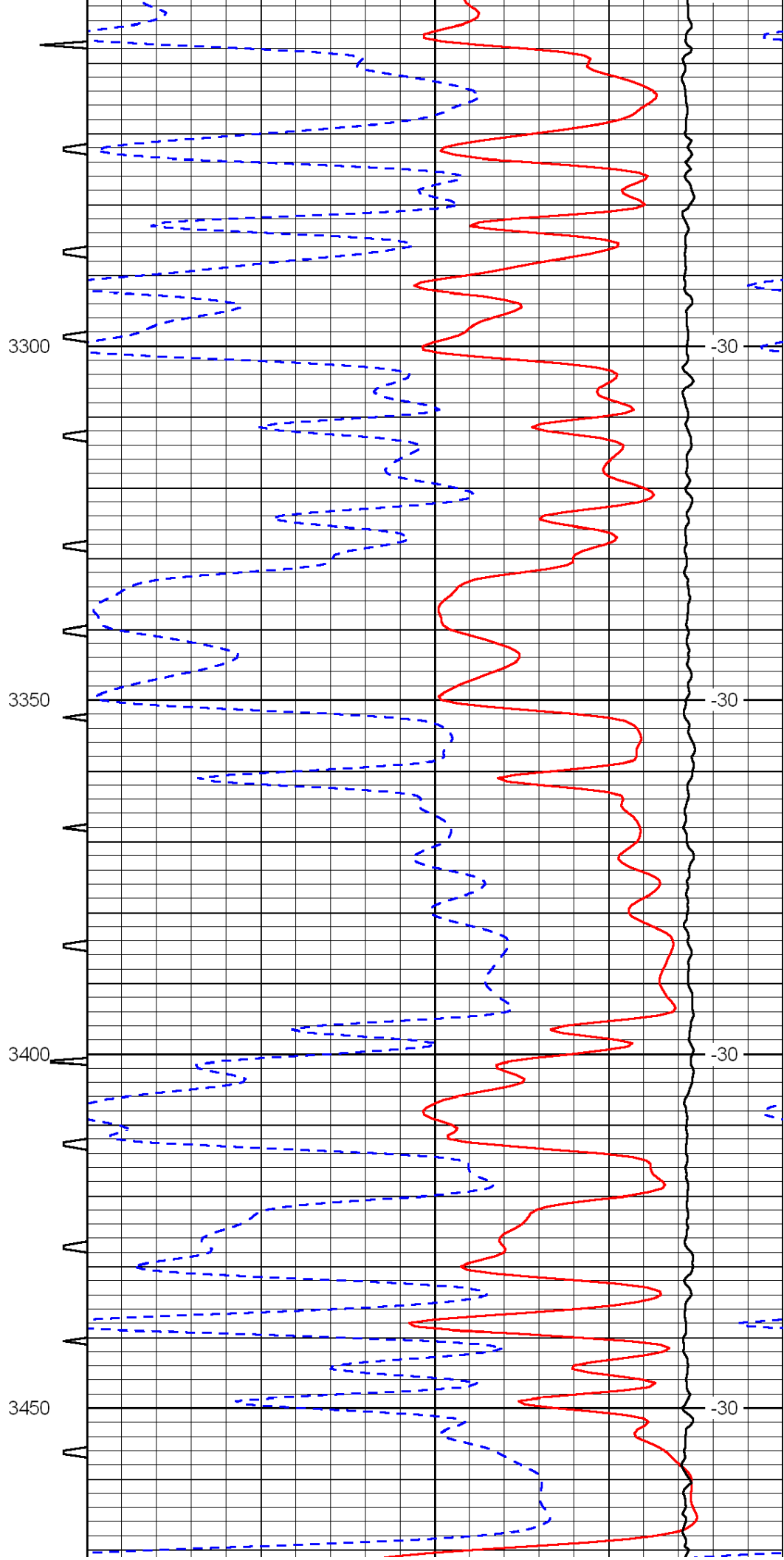
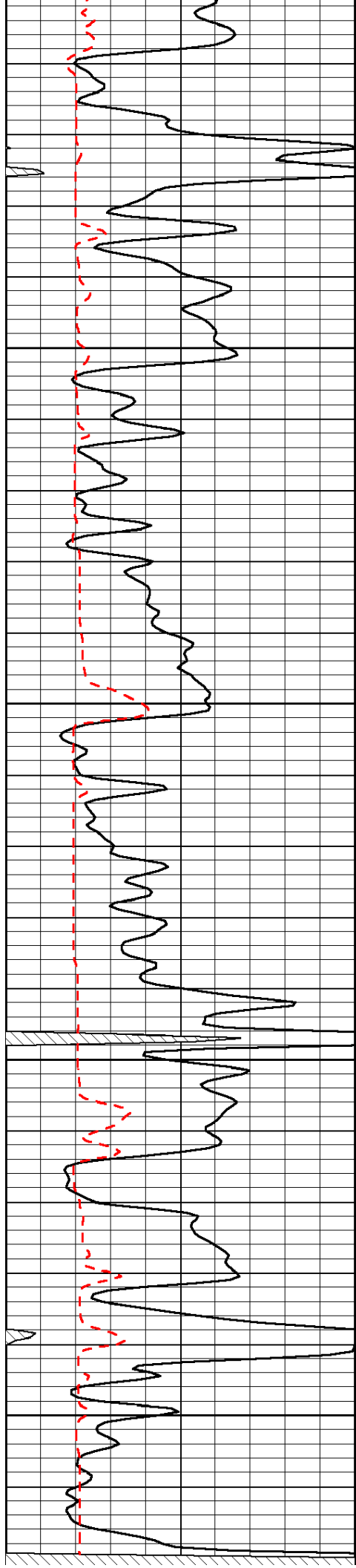


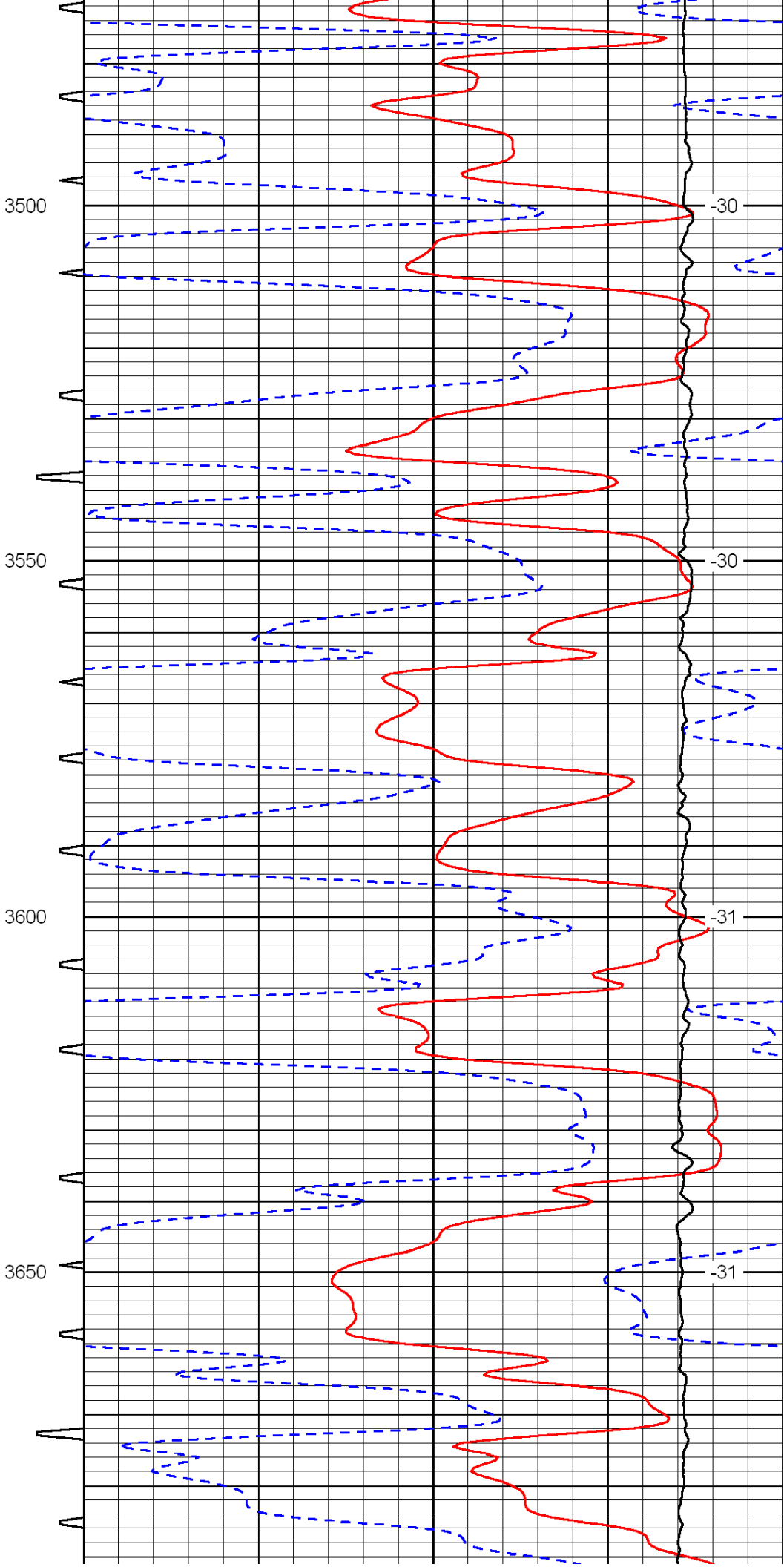
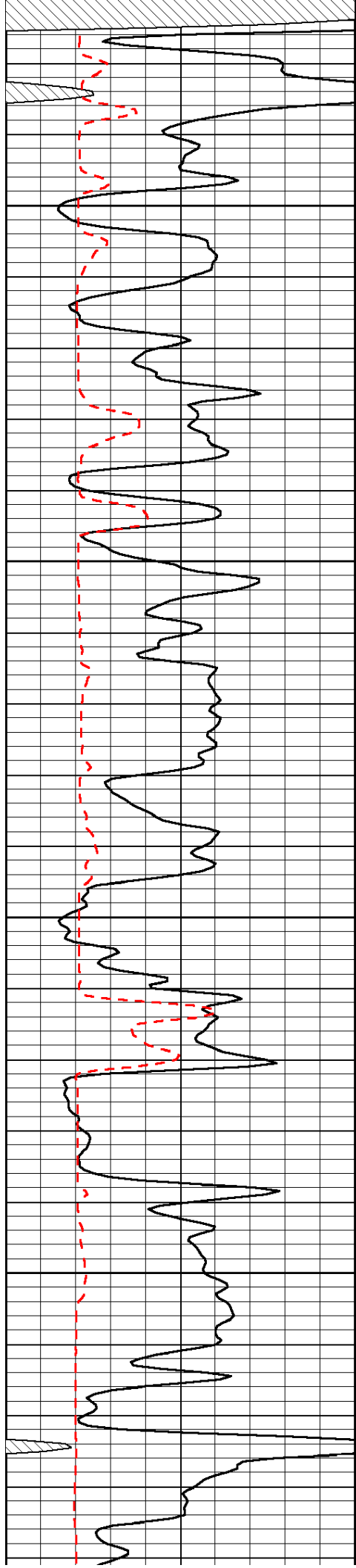


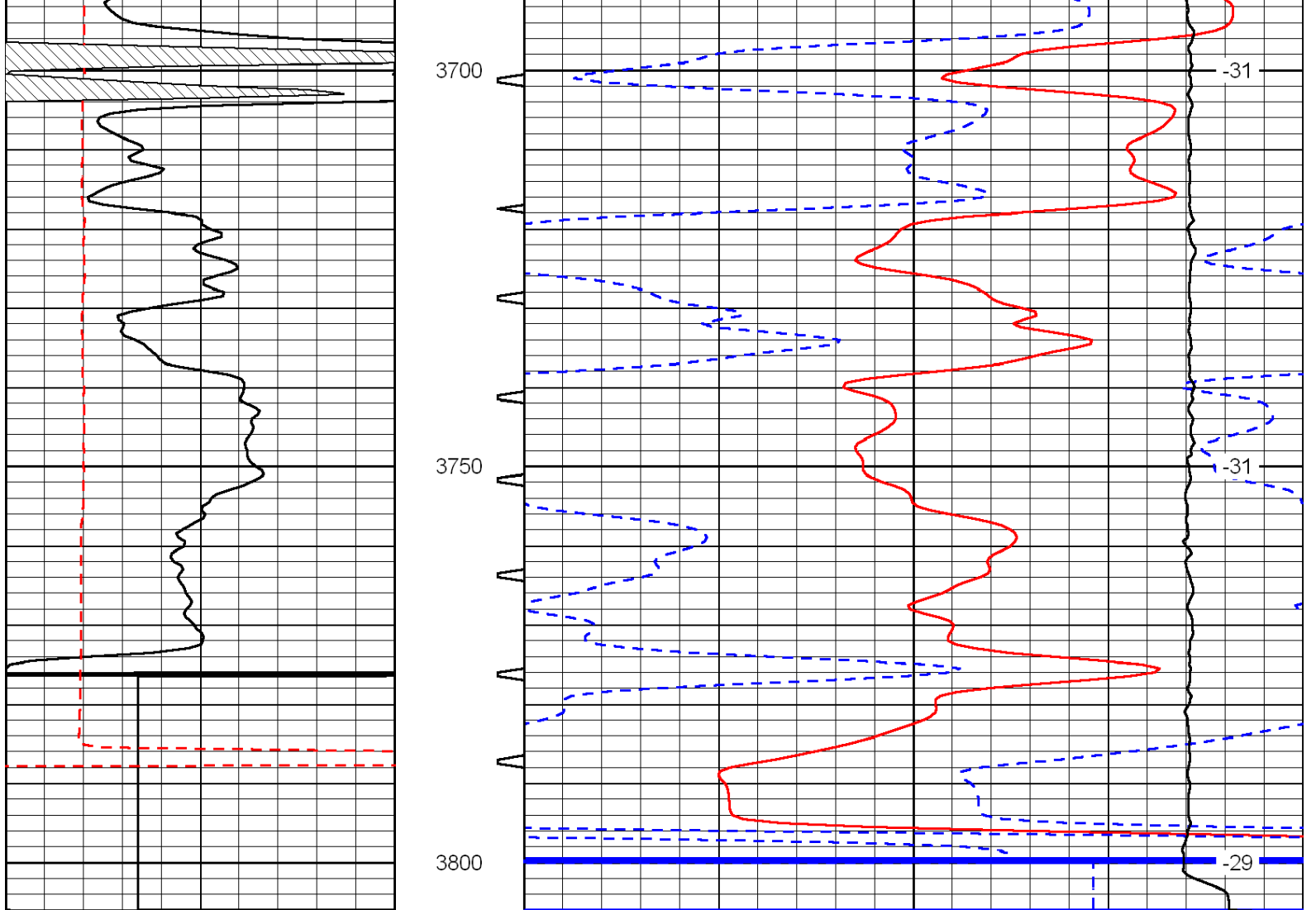












0	Gamma Ray	150	Sonic Int	140	Delta Time (usec/ft)	40
150	Gamma Ray	300	5	0	SPOR	-10
6	Caliper (GAPI)	16		15000	LTEN (lb)	0
LSPD						